

## **Appendix A – Solicitation of Proposals from Friant Division Contractors**



IN REPLY REFER TO:

# United States Department of the Interior

BUREAU OF RECLAMATION  
South-Central California Area Office  
1243 N Street  
Fresno, California 93721-1813



SCC-440  
WTR-4.00

JUN 04 2010

VIA ELECTRONIC MAIL AND U.S. POSTAL SERVICE

Board of Directors - Friant Division  
(See Enclosed List)

Subject: Request for Written Scenarios for the Recirculation of Friant Recaptured Water Stored in San Luis Reservoir – San Joaquin River Restoration Program – Central Valley Project – Friant Division

Dear Board Members:

The September 13, 2006, Stipulation of Settlement for the Natural Resources Defense Council et al, v. Rodgers, et al, CIV No. S-88-1658-LKK/GGH (Settlement) provides for the development of a plan as a part of the implementation of the Water Management Goal to reduce or avoid adverse water supply impacts to all of the Friant Division long-term contractors that may results from the Interim Flows and Restoration Flows provided for in the Settlement. Paragraph 16 (a) of the Settlement states, in part, *“a plan for recirculation, recapture, reuse, exchange or transfer of the Interim Flows and Restoration Flows for the purpose of reducing or avoiding impacts to water deliveries to all of the Friant Division long-term contractors caused by the Interim Flows and Restoration Flows...”*

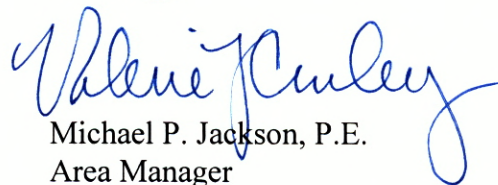
For 2010, Reclamation has determined up to 60,000 acre-feet (AF) of Interim Flows has been recaptured in San Luis reservoir for recirculation back to the Friant Division place of use. To prepare and implement a plan as authorized under P.L. 111-11, San Joaquin River Restoration Settlement Act, Reclamation is requesting written scenarios be submitted on how Friant Division contractors could facilitate the return of up to 60,000 AF. Scenarios selected will be used by Reclamation to develop the recirculation plan for 2010. To aid in the preparation of the scenarios, enclosed is the Criteria for the Evaluation of Scenarios Reclamation will use to rank options presented.

All scenarios can be either electronically mailed to [vcurley@usbr.gov](mailto:vcurley@usbr.gov) or mailed (postmarked) to the address above not later than Wednesday, June 9, 2010. Selections will be announced on Friday, June 11, 2010 via e-mail. Prior to the implementation of the plan, environmental analysis

will be completed on all the selected scenarios. If there are questions regarding the selection of the scenarios and/or the implementation of the plan, please contact Ms. Valerie Curley, Supervisory Repayment Specialist at 559-487-5041 or for the hearing impaired please call TTY 800-735-2929.

Sincerely,

For



Michael P. Jackson, P.E.  
Area Manager

Enclosure

cc: Mr. Ron Jacobsma  
Friant Water Authority  
854 North Harvard Avenue  
Lindsay, CA 93247-1715

Mr. Douglas Welch  
Madera Chowchilla Water & Power Authority  
P.O. Box 905  
Madera, CA 93610-0905

Mr. Stephen H. Ottemoeller  
Water Resources Manager  
Friant Water Authority  
1974 North Gateway Boulevard, Suite 104  
Fresno, CA 93727  
(all w/encl)

**Board of Directors**  
**Friant Division**  
(June 3, 2010)

**Friant-Kern Canal**

Arvin-Edison Water Storage District  
City of Fresno  
City of Lindsay  
City of Orange Cove  
Delano-Earlimart Irrigation District  
Exeter Irrigation District  
Fresno Irrigation District  
Garfield Water District  
International Water District  
Ivanhoe Irrigation District  
Kaweah-Delta Water Conservation District  
Lewis Creek Water District  
Lindmore Irrigation District  
Lindsay-Strathmore Irrigation District  
Lower Tule River Irrigation District  
Orange Cove Irrigation District  
Porterville Irrigation District  
Saucelito Irrigation District  
Shafter-Wasco Irrigation District  
Southern San Joaquin Municipal Utility District  
Stone Corral Irrigation District  
Tea Pot Dome Water District  
Terra Bella Irrigation District  
Tulare Irrigation District

**Madera Canal**

Chowchilla Water District  
Madera Irrigation District

**Millerton Lake**

County of Madera  
Fresno County Waterworks District #18  
Gravelly Ford Water District



**Bureau of Reclamation  
MP-Region  
South-Central California Area Office  
San Joaquin River Restoration Program (SJRRP)**

***Inquiry for Scenarios***

**Criteria for Evaluation of Scenarios for 2010 Friant Recirculation Water**

**Action** – To prepare and implement a plan as authorized under P.L. 111-11, San Joaquin River Restoration Settlement Act, Reclamation is requesting written scenarios be submitted on how Friant Division contractors could facilitate the return of up to 60,000 AF. Scenarios selected will be used by Reclamation to develop and implement the recirculation plan for 2010.

**Minimum Criteria for Scenarios**

**COSTS**

No cost to Reclamation or the CVP - Costs for Friant Recirculated water made available in Millerton Lake for distribution to Friant Division contractors will be a part of their Class 1 and/or Class 2 rates. If there are additional costs, scenarios should propose how the costs would be collected.

**Ranking Criteria for Scenarios**

**WATER**

- Amount of water required from San Luis reservoir: scenarios which meet San Luis operational goals would be prioritized
- Amount of water made available in Millerton reservoir: scenarios that offer 1:1 or more water for recirculation would be prioritized
- Amount of water returned to individual districts, but not made available in Millerton reservoir

**TIMING**

- Timing of delivery from San Luis reservoir
- Timing of water made available in Millerton reservoir
- Capability to move recaptured water out of San Luis reservoir by February 28, 2011
- Scenarios that don't require rescheduling into the next water year

**INSTITUTIONAL & REGULATORY (I&R)**

- Any new agreements and/or permits required by Reclamation
- Type of environmental analysis required

**Equitable Distribution**

If multiple scenarios are equally prioritized based on the ranking criteria and the proposed volume of water exceeds the available volume in San Luis, deliveries to Friant Division contractors would be prorated based upon total water supply impacts as determined by the Recovered Water Account.

**Assumptions/Known Conditions**

- An estimated amount of up to 60,000 AF Friant Recirculation Water is currently available in San Luis reservoir
- Reclamation will pursue a conveyance agreement with DWR to convey Friant Recirculation water in the California Aqueduct if the proponent does not have its own contract/capability to provide for such conveyance
- All Friant Recirculation water made available in Millerton Lake is to be added to the Class 1 and/or Class 2 overall volume available to all the Friant Division contractors
- Proponent is responsible for obtaining agreements with third party exchange partners as required to make water available in Millerton Lake

***Scenarios should be submitted not later than June 9, 2010, via e-mail to [vcurlley@usbr.gov](mailto:vcurlley@usbr.gov) or by regular mail to Bureau of Reclamation, 1243 "N" Street, Fresno, CA 93721, Attention: Valerie Curley. For questions, please contact Ms. Curley at 559-487-5041.***

## **Appendix B – Summation of Received Proposals**





IN REPLY REFER TO:

SCC-440  
WTR-4.00

# United States Department of the Interior

BUREAU OF RECLAMATION  
South-Central California Area Office  
1243 N Street  
Fresno, California 93721-1813



JUN 17 2010

VIA ELECTRONIC MAIL AND U.S. POSTAL SERVICE

Board of Directors - Friant Division  
(See Enclosed List)

Subject: Results of Scenario Review for the Recirculation of Friant Recaptured Water Stored in San Luis Reservoir (Recirculation) – San Joaquin River Restoration Program – Central Valley Project – Friant Division (Reference our e-mail and letter dated June 4, 2010)

Dear Board Members:

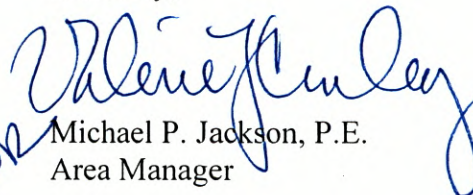
In response to our June 4, 2010 Board of Directors' letter, Reclamation received five scenarios for consideration. After review and evaluation of each scenario, Reclamation has made the decision to environmentally analyze four of the five concepts presented as a part of the process for developing a Recirculation Plan for implementation in 2010.

Enclosed is a first draft of a project description for the environmental analysis. During the environmental analysis process and prior to implementation, discussions will be held with each district representative(s) that submitted a scenario to refine and finalize the concepts presented in the draft documents provided.

Reclamation appreciates the responsiveness of all the contractors who participated and/or submitted proposals for consideration and look forward to working with each Friant Division contractor on our collective Recirculation effort.

If there are questions regarding the selection of the scenarios and/or the implementation of the plan, please contact Ms. Valerie Curley, Supervisory Repayment Specialist at 559-487-5041 or for the hearing impaired please call TTY 800-735-2929.

Sincerely,

  
for Michael P. Jackson, P.E.  
Area Manager

Enclosures – 1

cc: (continued on next page)

cc: (continued from previous page)

Mr. Ronald D. Jacobsma  
General Manager  
Friant Water Authority  
854 Harvard Avenue  
Lindsay, CA 93247-1715

Mr. Doug Welch  
Madera Chowchilla  
Water & Power Authority  
P.O. Box 905  
Madera, CA 93610-0905

Mr. Stephen H. Ottemoeller  
Water Resources Manager  
Friant Water Authority  
1974 North Gateway Blvd., Ste 104  
Fresno, CA 93727  
(all w/enclosure)



**Board of Directors**  
**Friant Division**  
(June 17, 2010)

**Friant-Kern Canal**

Arvin-Edison Water Storage District  
City of Fresno  
City of Lindsay  
City of Orange Cove  
Delano-Earlimart Irrigation District  
Exeter Irrigation District  
Fresno Irrigation District  
Garfield Water District  
International Water District  
Ivanhoe Irrigation District  
Kaweah-Delta Water Conservation District  
Lewis Creek Water District  
Lindmore Irrigation District  
Lindsay-Strathmore Irrigation District  
Lower Tule River Irrigation District  
Orange Cove Irrigation District  
Porterville Irrigation District  
Saucelito Irrigation District  
Shafter-Wasco Irrigation District  
Southern San Joaquin Municipal Utility District  
Stone Corral Irrigation District  
Tea Pot Dome Water District  
Terra Bella Irrigation District  
Tulare Irrigation District

**Madera Canal**

Chowchilla Water District  
Madera Irrigation District

**Millerton Lake**

County of Madera  
Fresno County Waterworks District #18  
Gravelly Ford Water District

June 15, 2010

*Draft prepare by DMooney and VCurley (mpj edits 6/16/10)*

**D-R-A-F-T**  
**PROJECT DESCRIPTION**  
**2010 FRIANT RECIRCULATION PLAN**

The September 13, 2006, Stipulation of Settlement for the Natural Resources Defense Council et al, v. Rodgers, et al, CIV No. S-88-1658-LKK/GGH (Settlement) provides for the development of a plan as a part of the implementation of the Water Management Goal to reduce or avoid adverse water supply impacts to all of the Friant Division long-term contractors that may results from the Interim Flows and Restoration Flows provided for in the Settlement. Paragraph 16 (a) of the Settlement states, in part, *“a plan for recirculation, recapture, reuse, exchange or transfer of the Interim Flows and Restoration Flows for the purpose of reducing or avoiding impacts to water deliveries to all of the Friant Division long-term contractors caused by the Interim Flows and Restoration Flows...”*

For 2010, Reclamation has determined up to 60,000 acre-feet (AF) of Interim Flows has been recaptured in San Luis Reservoir for recirculation back to the Friant Division place of use. However, the accounting has not been finalized and total amounts may change. The recaptured water, less losses, is intended to be recirculated back to the sixteen (16) Friant Division Class 2 contractors as Class 2 supplies in four phases.

For Phase 1, 25,000 AF of Friant Recirculation (FR) water will be made available in Millerton Lake as a result of a ‘East to West Transfer’ where Fresno ID will exchange 25,000 AF of their transferred CVP supplies for FR water in San Luis Reservoir for integration into Class 2 supplies as shown in Table 1, Phase 1 column. The Tulare Irrigation District and the Lower Tule River Irrigation District would not participate in Phase 1 and would receive supplies according to deliveries described in Phase 2.

For Phase 2, Tulare Irrigation District (TID) and the Lower Tule River Irrigation District (LTRID) are proposing an exchange with Tulare Lake (TL) interests (State Water Project (SWP) contractors) where TID and LTRID’s 16,226 AF of FR water available in San Luis Reservoir would be used by the SWP contractors in exchange for TID and LTRID to use the TL SWP contractors’ Kaweah and Tule River (non-project) water as their CVP water allocation. By completing this exchange, water would be returned to TID and LTRID as shown in Table 1, Phase 2 column.

For Phase 3, Tulare Lake Basin Water Storage District, a SWP contractor, would take delivery of 12,000 AF of FR water in San Luis Reservoir. In turn, FID would take delivery of 11,400 AF of Kings River (non-project) water and free up 11,400 AF of its Class 2 water in Millerton Lake for delivery to Class 2 contractors proportionally as shown in Table 1, Phase 3 column.

For Phase 4, Arvin-Edison Water Storage District would take delivery of the remaining 7,374 AF of FR Water off the California Aqueduct and in exchange Arvin would make an equivalent amount of their Class 1 supplies available in Millerton Lake for delivery to Class 2 contractors proportionally as shown in Table 1, Phase 4 column.



**- Proposed 2010 Friant Recirculation Plan - Bureau of Reclamation - MP-Region -**  
San Joaquin River Restoration Program & South-Central California Area Office  
*- draft prepared as of June 15, 2010 -*

Friant Division Class 2 Contractor	Class 2 Contract Amount (AF)	Class 2 Contract (%)	Maximum Friant Recirculation (FR) Water Available (AF)	Percent of Recirculation Amount Available from Millerton	"East to West" Transfer then Exchange SLR FR Water for Transfer Water in Millerton <b>Phase 1</b> <b>(25,000 AF)</b>	SWP Tulare Lake contractors exchange Tule/Kaweah River water for TID & LTRID FR Water <b>Phase 2</b> <b>(16,225 AF)</b>	SWP Tulare Lake Basin WSD exchange FR Water in SLR with Kings River with FID; FID CVP Water made available in Millerton <b>Phase 3</b> <b>(11,400 AF)</b>	AEWSD use FR Water in SLR and Exchange with their CVP Water in Millerton <b>Phase 4</b> <b>(7,374 AF)</b>
Arvin-Edison WSD	311,675	22.2%	13,343	32.90%	7,168	0	3,750	2,426
Chowchilla WD	160,000	11.4%	6,850	16.89%	3,680	0	1,925	1,245
Delano-Earlimart ID	74,500	5.3%	3,189	7.86%	1,713	0	896	580
Exeter ID	19,000	1.4%	813	2.01%	437	0	229	148
Fresno ID	75,000	5.4%	3,211	0	3,211	0	0	0
Gravelly Ford WD	14,000	1.0%	599	1.48%	322	0	168	109
Ivanhoe ID	500	0.0%	21	0.05%	11	0	6	4
Kaweah-Delta WCD	7,400	0.5%	317	0.78%	170	0	89	58
Lindmore ID	22,000	1.6%	942	2.32%	506	0	265	171
Lower Tule River ID	238,000	17.0%	10,189	0	0	10,189	0	0
Madera ID	186,000	13.3%	7,963	19.63%	4,277	0	2,238	1,448
Porterville ID	30,000	2.1%	1,284	3.17%	690	0	361	233
Saucelito ID	32,800	2.3%	1,404	3.46%	754	0	395	255
Shafter-Wasco ID	39,600	2.8%	1,695	4.18%	911	0	476	308
S. San Joaquin MUD	50,000	3.6%	2,141	5.28%	1,150	0	602	389
Tulare ID	141,000	10.1%	6,036	0	0	6,036	0	0



## **Appendix C – USFWS Species Listing**

**U.S. Fish & Wildlife Service**  
**Sacramento Fish & Wildlife Office**  
**Federal Endangered and Threatened Species that Occur in**  
**or may be Affected by Projects in the Counties and/or**  
**U.S.G.S. 7 1/2 Minute Quads you requested**

Document Number: 100621071228

Database Last Updated: April 29, 2010

---

No quad species lists requested.

---

### County Lists

#### Listed Species

##### Invertebrates

*Branchinecta conservatio*

Conservancy fairy shrimp (E)

*Branchinecta longiantenna*

Critical habitat, longhorn fairy shrimp (X)

longhorn fairy shrimp (E)

*Branchinecta lynchi*

Critical habitat, vernal pool fairy shrimp (X)

vernal pool fairy shrimp (T)

*Desmocerus californicus dimorphus*

valley elderberry longhorn beetle (T)

*Euproserpinus euterpe*

Kern primrose sphinx moth (T)

*Lepidurus packardii*

Critical habitat, vernal pool tadpole shrimp (X)

vernal pool tadpole shrimp (E)

##### Fish

*Oncorhynchus (=Salmo) aquabonita whitei*

Critical habitat, little Kern golden trout (X)

Little Kern golden trout (T)

*Oncorhynchus (=Salmo) clarki henshawi*

Lahontan cutthroat trout (T)

*Oncorhynchus (=Salmo) clarki seleniris*

Paiute cutthroat trout (T)

*Oncorhynchus mykiss*

Central Valley steelhead (T) (NMFS)

## Amphibians

*Ambystoma californiense*

California tiger salamander, central population (T)

Critical habitat, CA tiger salamander, central population (X)

*Rana draytonii*

California red-legged frog (T)

Critical habitat, California red-legged frog (X)

## Reptiles

*Gambelia (=Crotaphytus) sila*

blunt-nosed leopard lizard (E)

*Thamnophis gigas*

giant garter snake (T)

## Birds

*Charadrius alexandrinus nivosus*

western snowy plover (T)

*Empidonax traillii extimus*

Critical habitat, southwestern willow flycatcher (X)

southwestern willow flycatcher (E)

*Gymnogyps californianus*

California condor (E)

Critical habitat, California condor (X)

*Vireo bellii pusillus*

Least Bell's vireo (E)

## Mammals

*Dipodomys ingens*

giant kangaroo rat (E)

*Dipodomys nitratooides exilis*

Critical habitat, Fresno kangaroo rat (X)

Fresno kangaroo rat (E)

*Dipodomys nitratooides nitratooides*

Tipton kangaroo rat (E)



*Ovis canadensis californiana*

Sierra Nevada (=California) bighorn sheep (E)

*Sorex ornatus relictus*

Buena Vista Lake shrew (E)

Critical habitat, Buena Vista Lake shrew (X)

*Vulpes macrotis mutica*

San Joaquin kit fox (E)

## Plants

*Calyptridium pulchellum*

Mariposa pussy-paws (T)

*Camissonia benitensis*

San Benito evening-primrose (T)

*Castilleja campestris ssp. succulenta*

Critical habitat, succulent (=fleshy) owl's-clover (X)

succulent (=fleshy) owl's-clover (T)

*Caulanthus californicus*

California jewelflower (E)

*Chamaesyce hooveri*

Critical habitat, Hoover's spurge (X)

Hoover's spurge (T)

*Clarkia springvillensis*

Springville clarkia (T)

*Cordylanthus palmatus*

palmate-bracted bird's-beak (E)

*Eremalche kernensis*

Kern mallow (E)

*Monolopia congdonii* (=Lembertia congdonii)

San Joaquin woolly-threads (E)

*Opuntia treleasei*

Bakersfield cactus (E)

*Orcuttia inaequalis*

Critical habitat, San Joaquin Valley Orcutt grass (X)  
San Joaquin Valley Orcutt grass (T)

*Orcuttia pilosa*

Critical habitat, hairy Orcutt grass (X)

*Pseudobahia bahiifolia*

Hartweg's golden sunburst (E)

*Pseudobahia peirsonii*

San Joaquin adobe sunburst (T)

*Sidalcea keckii*

Critical habitat, Keck's checker-mallow (X)

Keck's checker-mallow (=checkerbloom) (E)

## Proposed Species

### Amphibians

*Rana draytonii*

Critical habitat, California red-legged frog (PX)

## Candidate Species

### Amphibians

*Bufo canorus*

Yosemite toad (C)

*Rana muscosa*

mountain yellow-legged frog (C)

### Birds

*Coccyzus americanus occidentalis*

Western yellow-billed cuckoo (C)

### Mammals

*Martes pennanti*

fisher (C)

### Plants

*Abronia alpina*

Ramshaw sand-verbena (C)

## Key:

(E) *Endangered* - Listed as being in danger of extinction.

(T) *Threatened* - Listed as likely to become endangered within the foreseeable future.

(P) *Proposed* - Officially proposed in the Federal Register for listing as endangered or threatened.

(NMFS) Species under the Jurisdiction of the [National Oceanic & Atmospheric Administration Fisheries Service](#). Consult with them directly about these species.

*Critical Habitat* - Area essential to the conservation of a species.

(PX) *Proposed Critical Habitat* - The species is already listed. Critical habitat is being proposed for it.

(C) *Candidate* - Candidate to become a proposed species.

(V) Vacated by a court order. Not currently in effect. Being reviewed by the Service.

(X) *Critical Habitat* designated for this species

## Important Information About Your Species List

### How We Make Species Lists

We store information about endangered and threatened species lists by U.S. Geological Survey 7½ minute quads. The United States is divided into these quads, which are about the size of San Francisco.

The animals on your species list are ones that occur within, **or may be affected by** projects within, the quads covered by the list.

- Fish and other aquatic species appear on your list if they are in the same watershed as your quad or if water use in your quad might affect them.
- Amphibians will be on the list for a quad or county if pesticides applied in that area may be carried to their habitat by air currents.
- Birds are shown regardless of whether they are resident or migratory. Relevant birds on the county list should be considered regardless of whether they appear on a quad list.

### Plants

Any plants on your list are ones that have actually been observed in the area covered by the list. Plants may exist in an area without ever having been detected there. You can find out what's in the surrounding quads through the California Native Plant Society's online [Inventory of Rare and Endangered Plants](#).

### Surveying

Some of the species on your list may not be affected by your project. A trained biologist and/or botanist, familiar with the habitat requirements of the species on your list, should determine whether they or habitats suitable for them may be affected by your project. We recommend that your surveys include any proposed and candidate species on your list. See our [Protocol](#) and [Recovery Permits](#) pages.

For plant surveys, we recommend using the [Guidelines for Conducting and Reporting Botanical Inventories](#). The results of your surveys should be published in any environmental documents prepared for your project.

### Your Responsibilities Under the Endangered Species Act

All animals identified as listed above are fully protected under the Endangered Species Act of 1973, as amended. Section 9 of the Act and its implementing regulations prohibit the take of a federally listed wildlife species. Take is defined by the Act as "to harass, harm, pursue, hunt, shoot, wound, kill, trap, capture, or collect" any such animal.

Take may include significant habitat modification or degradation where it actually kills or injures wildlife by significantly impairing essential behavioral patterns, including breeding,



feeding, or shelter (50 CFR §17.3).

Take incidental to an otherwise lawful activity may be authorized by one of two procedures:

- If a Federal agency is involved with the permitting, funding, or carrying out of a project that may result in take, then that agency must engage in a formal [consultation](#) with the Service.

During formal consultation, the Federal agency, the applicant and the Service work together to avoid or minimize the impact on listed species and their habitat. Such consultation would result in a biological opinion by the Service addressing the anticipated effect of the project on listed and proposed species. The opinion may authorize a limited level of incidental take.

- If no Federal agency is involved with the project, and federally listed species may be taken as part of the project, then you, the applicant, should apply for an incidental take permit. The Service may issue such a permit if you submit a satisfactory conservation plan for the species that would be affected by your project.

Should your survey determine that federally listed or proposed species occur in the area and are likely to be affected by the project, we recommend that you work with this office and the California Department of Fish and Game to develop a plan that minimizes the project's direct and indirect impacts to listed species and compensates for project-related loss of habitat. You should include the plan in any environmental documents you file.

## Critical Habitat

When a species is listed as endangered or threatened, areas of habitat considered essential to its conservation may be designated as critical habitat. These areas may require special management considerations or protection. They provide needed space for growth and normal behavior; food, water, air, light, other nutritional or physiological requirements; cover or shelter; and sites for breeding, reproduction, rearing of offspring, germination or seed dispersal.

Although critical habitat may be designated on private or State lands, activities on these lands are not restricted unless there is Federal involvement in the activities or direct harm to listed wildlife.

If any species has proposed or designated critical habitat within a quad, there will be a separate line for this on the species list. Boundary descriptions of the critical habitat may be found in the Federal Register. The information is also reprinted in the Code of Federal Regulations (50 CFR 17.95). See our [Map Room](#) page.

## Candidate Species

We recommend that you address impacts to candidate species. We put plants and animals on our candidate list when we have enough scientific information to eventually propose them for listing as threatened or endangered. By considering these species early in your planning process you may be able to avoid the problems that could develop if one of these candidates was listed before the end of your project.

## Species of Concern

The Sacramento Fish & Wildlife Office no longer maintains a list of species of concern. However, various other agencies and organizations maintain lists of at-risk species. These lists provide essential information for land management planning and conservation efforts. [More info](#)

## Wetlands

If your project will impact wetlands, riparian habitat, or other jurisdictional waters as defined

by section 404 of the Clean Water Act and/or section 10 of the Rivers and Harbors Act, you will need to obtain a permit from the U.S. Army Corps of Engineers. Impacts to wetland habitats require site specific mitigation and monitoring. For questions regarding wetlands, please contact Mark Littlefield of this office at (916) 414-6580.

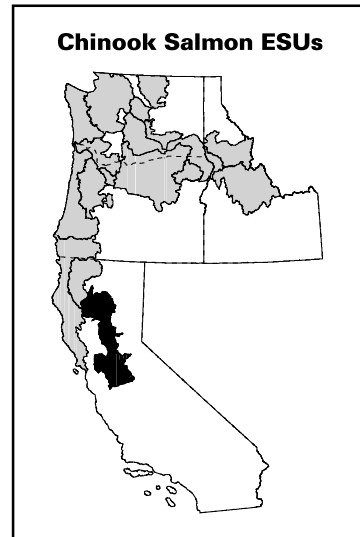
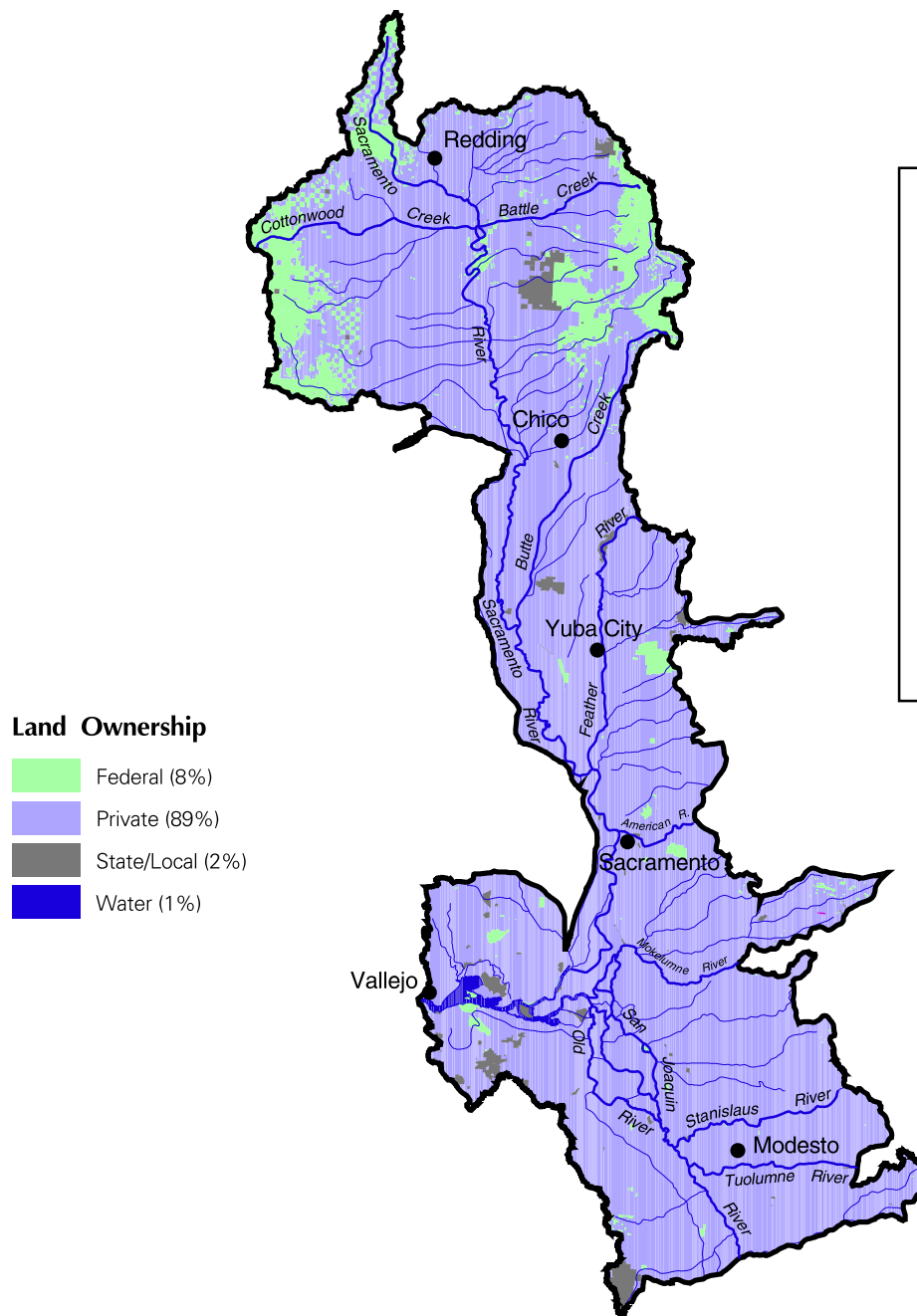
### Updates

Our database is constantly updated as species are proposed, listed and delisted. If you address proposed and candidate species in your planning, this should not be a problem. However, we recommend that you get an updated list every 90 days. That would be September 19, 2010.

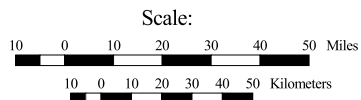
**Appendix D – Maps of Critical Habitat Designations in the Central Valley under  
NMFS Purview**



# CENTRAL VALLEY FALL AND LATE FALL-RUN CHINOOK SALMON ESU



United States Department of Commerce  
National Oceanic & Atmospheric Administration  
NATIONAL MARINE FISHERIES SERVICE  
HABITAT CONSERVATION DIVISION  
525 N.E. Oregon St., Suite 410  
Portland, OR 97232  
Tel (503) 231-2223

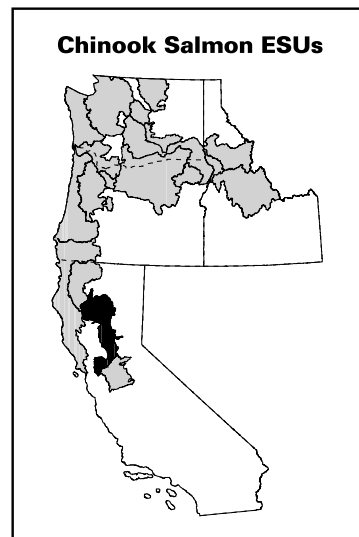
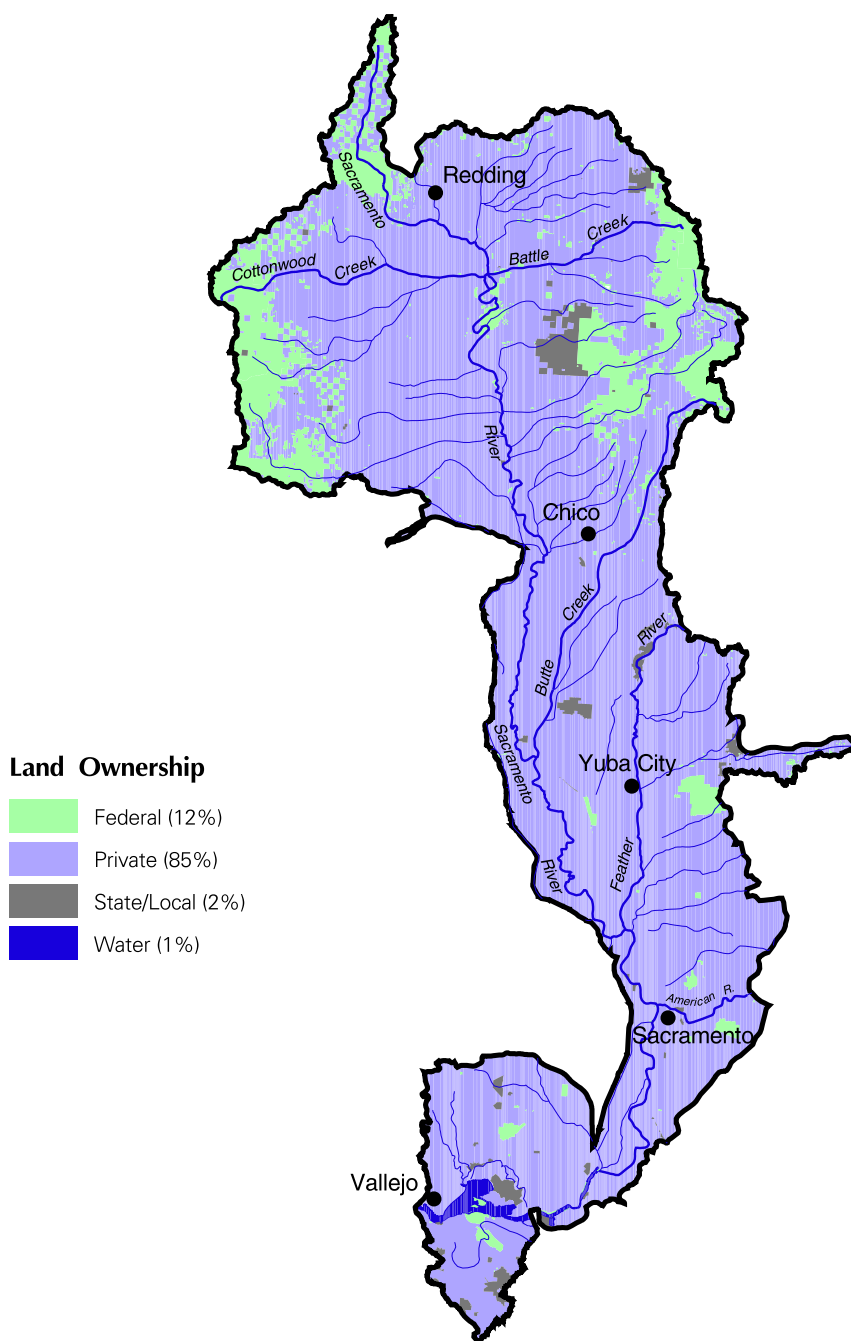


MAP DATE: 2/11/99  
CREATED BY: D.H.  
HCDGIS\RG\WIS\STONEICHIN

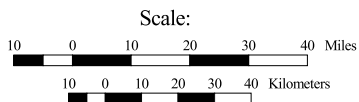
Note: This map is for general reference only.



# CENTRAL VALLEY SPRING-RUN CHINOOK SALMON ESU



United States Department of Commerce  
National Oceanic & Atmospheric Administration  
NATIONAL MARINE FISHERIES SERVICE  
HABITAT CONSERVATION DIVISION  
525 N.E. Oregon St., Suite 410  
Portland, OR 97232  
Tel (503) 231-2223



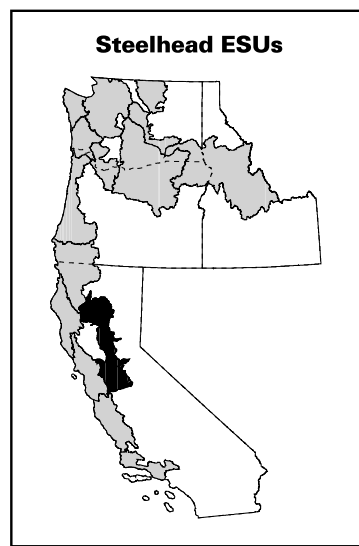
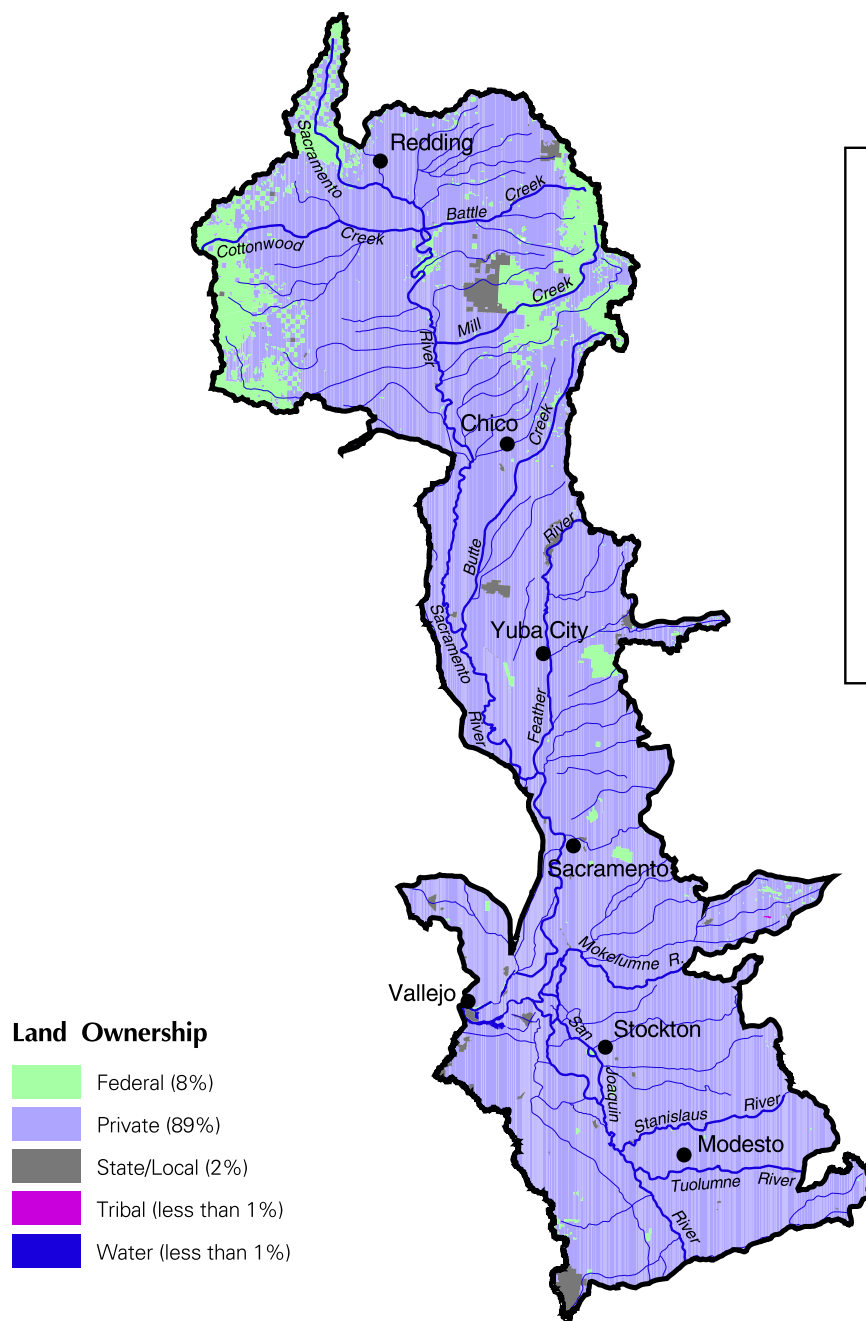
MAP DATE: 2/11/99  
CREATED BY: D.H.  
HCDGSRGNWISSTONEICHIN

Note: This map is for general reference only.

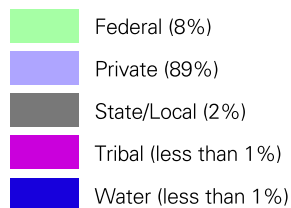




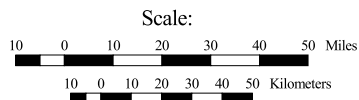
# CENTRAL VALLEY, CALIFORNIA STEELHEAD ESU



## Land Ownership



United States Department of Commerce  
National Oceanic & Atmospheric Administration  
NATIONAL MARINE FISHERIES SERVICE  
HABITAT CONSERVATION DIVISION  
525 N.E. Oregon St., Suite 410  
Portland, OR 97232  
Tel (503) 231-2223



MAP DATE: 2/11/99  
CREATED BY: D.H.  
HCDGIS\RG\WIS\STONEICHIN

Note: Map is for general reference only.

## Project Area in Relation to Mapped EFH, NOAA Fisheries

