

Notes: TUFLOW model results showing 2D inundation patterns (at specified time stamp) for existing and 4/30 gate closure (left panes), Yolo Bypass inflows (upper right panes), and wetted area for all five gate closures (lower right pane). The vertical bar in the right panes corresponds to the time stamp below the left panes, whereby the blue hatching represents 4/30 gate closure conditions as overlain by the grey hatching representing existing conditions.



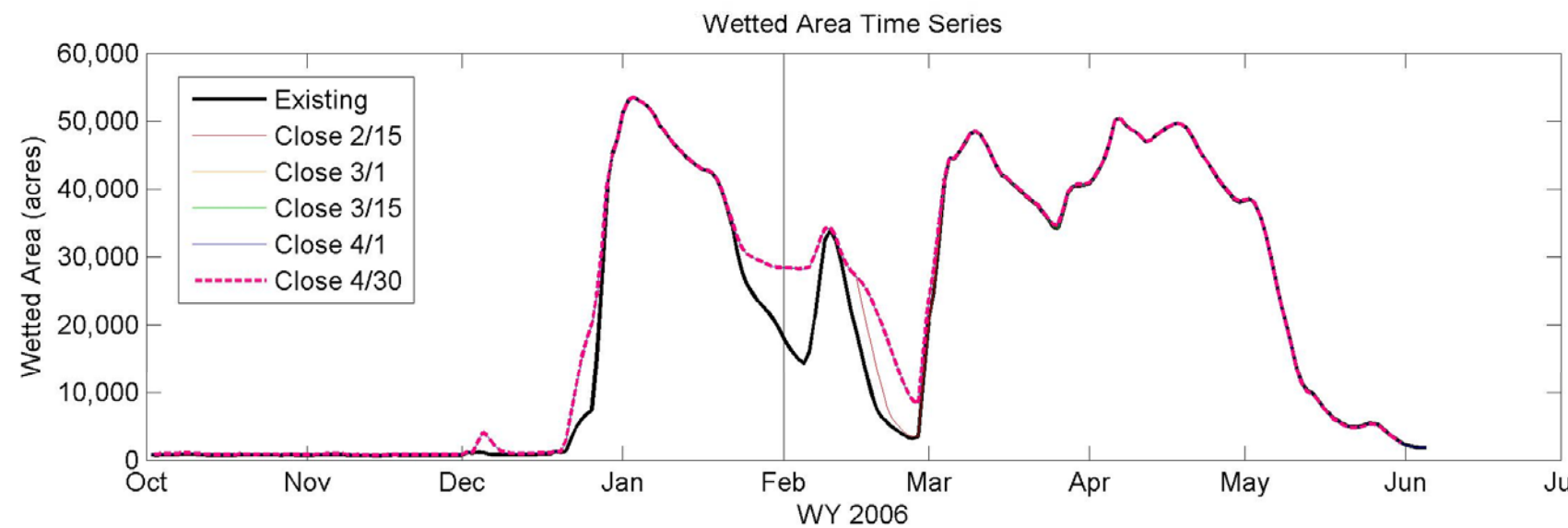
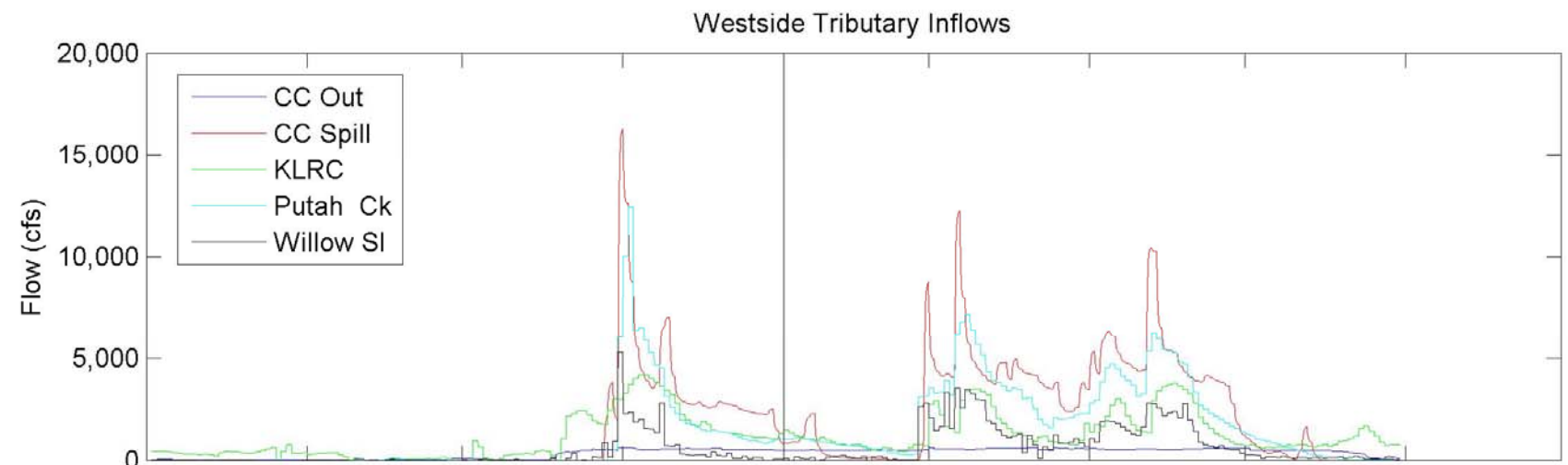
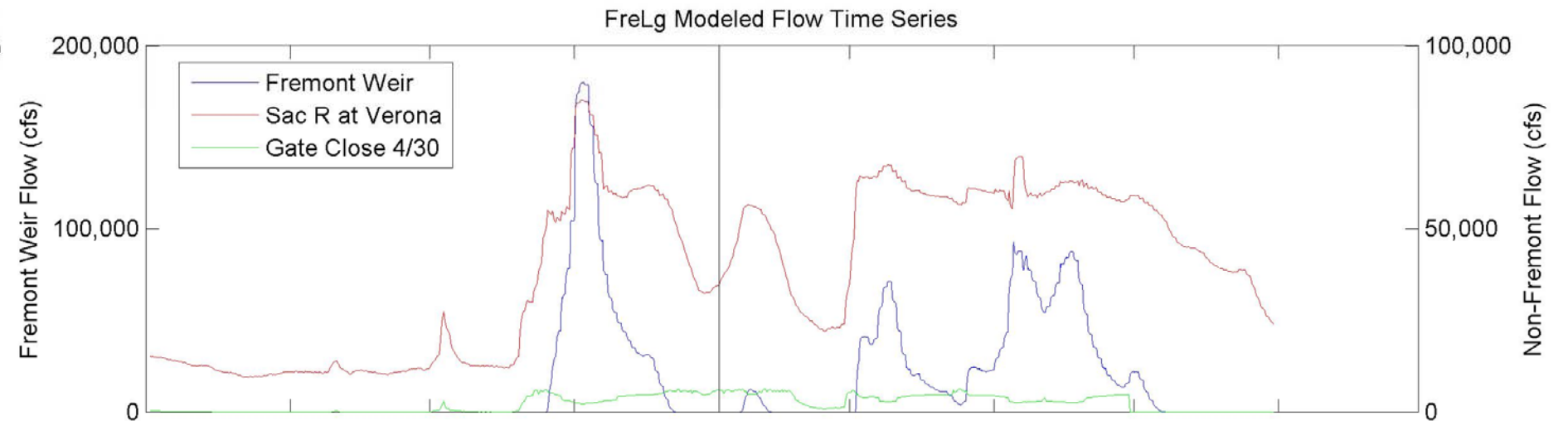
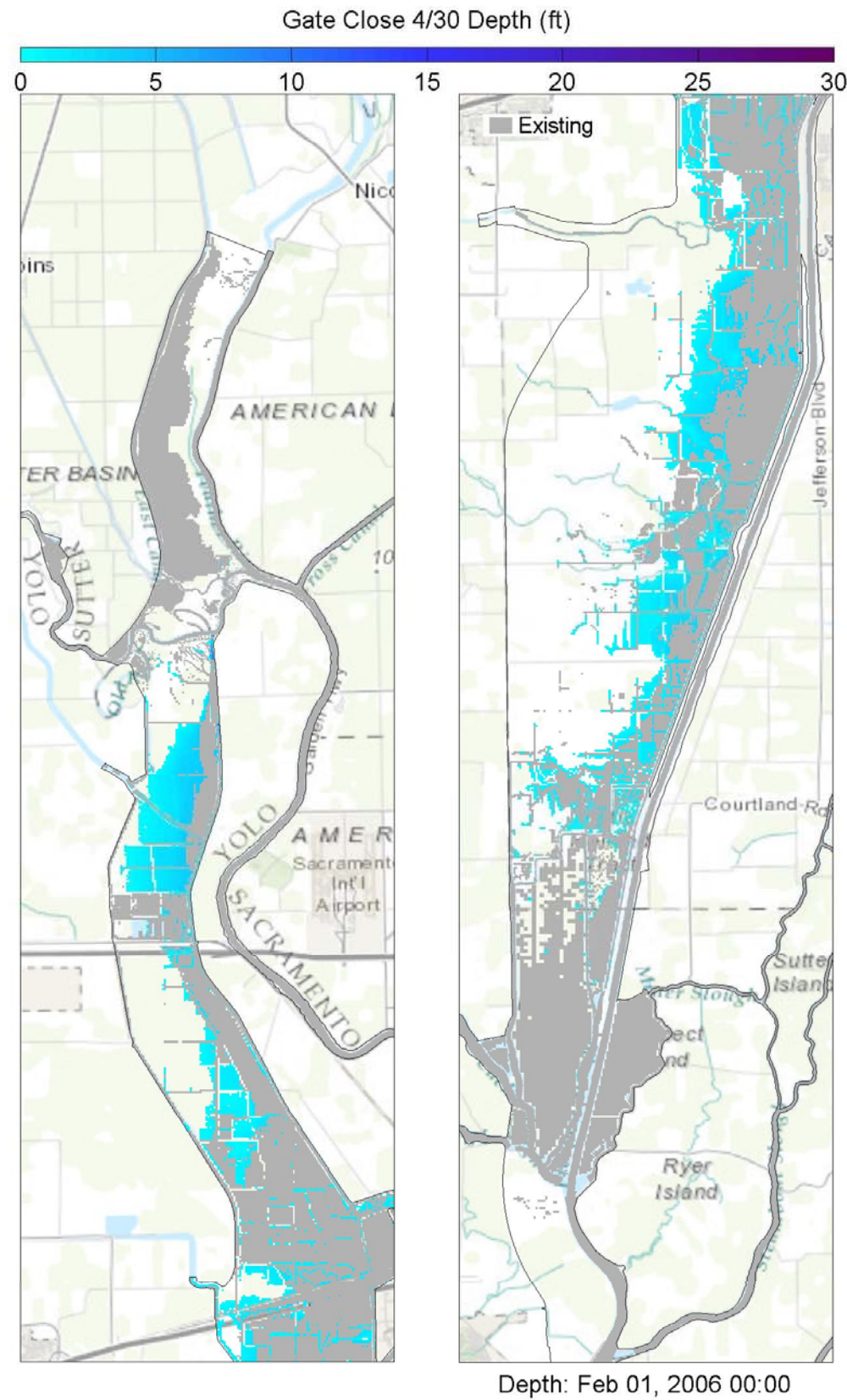
Yolo Bypass Salmonid Habitat Restoration and Fish Passage

Wetted Area Comparison for WY 2005 for FreLg

Prepared for DWR

Created By: SJB

Figure E9



Notes: TUFLOW model results showing 2D inundation patterns (at specified time stamp) for existing and 4/30 gate closure (left panes), Yolo Bypass inflows (upper right panes), and wetted area for all five gate closures (lower right pane). The vertical bar in the right panes corresponds to the time stamp below the left panes, whereby the blue hatching represents 4/30 gate closure conditions as overlain by the grey hatching representing existing conditions.



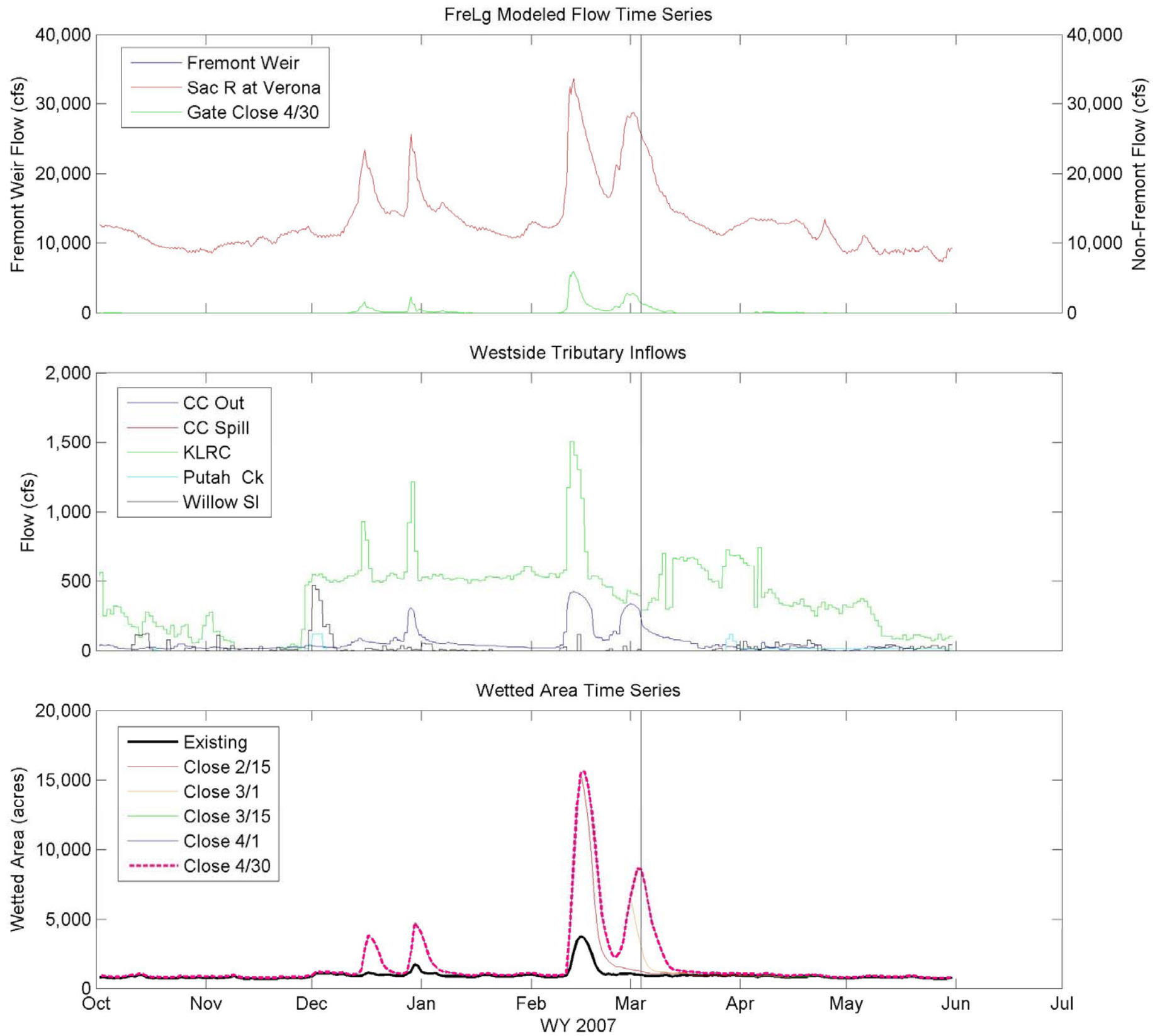
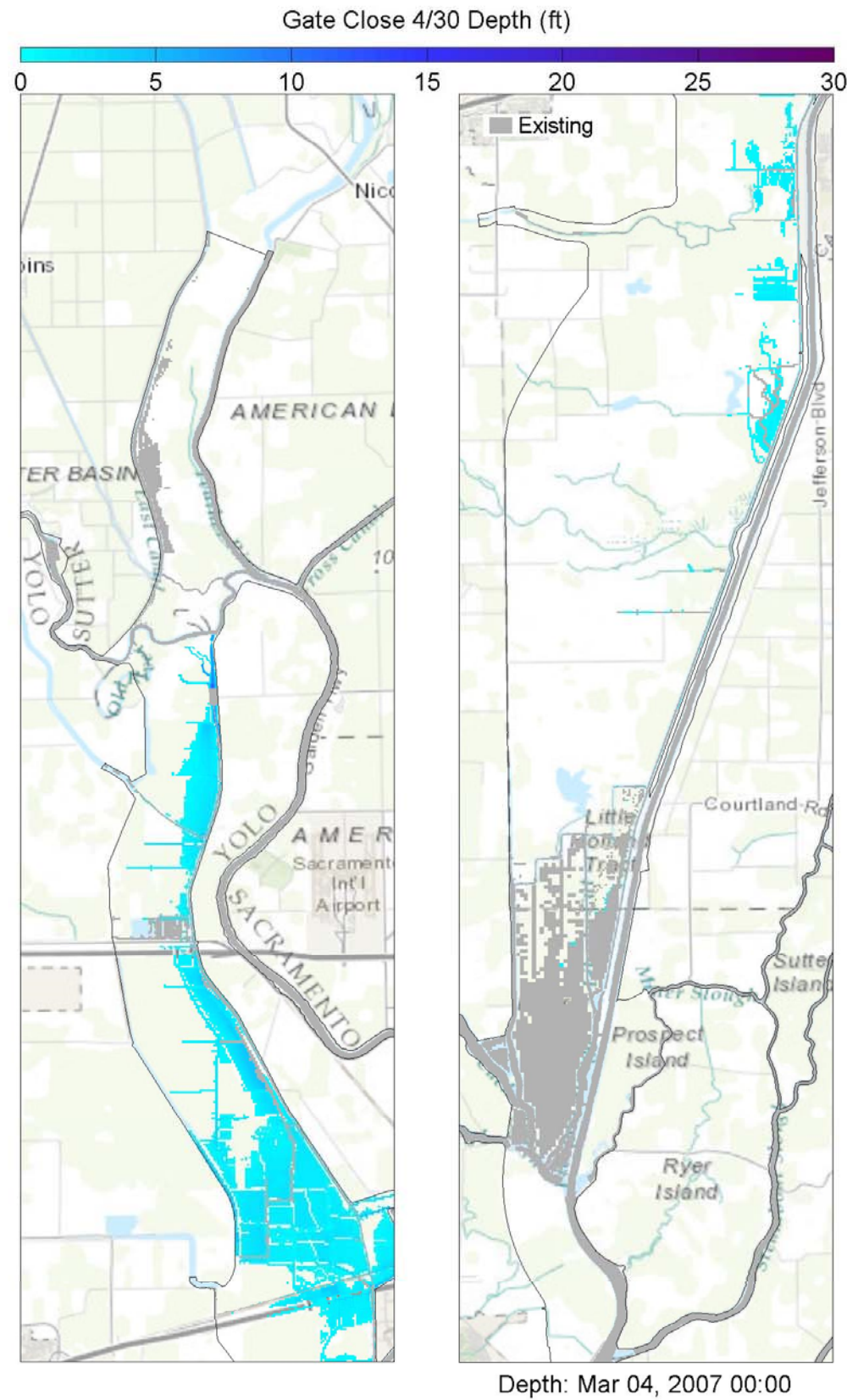
Yolo Bypass Salmonid Habitat Restoration and Fish Passage

Wetted Area Comparison for WY 2006 for FreLg

Prepared for DWR

Created By: SJB

Figure E10



Notes: TUFLOW model results showing 2D inundation patterns (at specified time stamp) for existing and 4/30 gate closure (left panes), Yolo Bypass inflows (upper right panes), and wetted area for all five gate closures (lower right pane). The vertical bar in the right panes corresponds to the time stamp below the left panes, whereby the blue hatching represents 4/30 gate closure conditions as overlain by the grey hatching representing existing conditions.



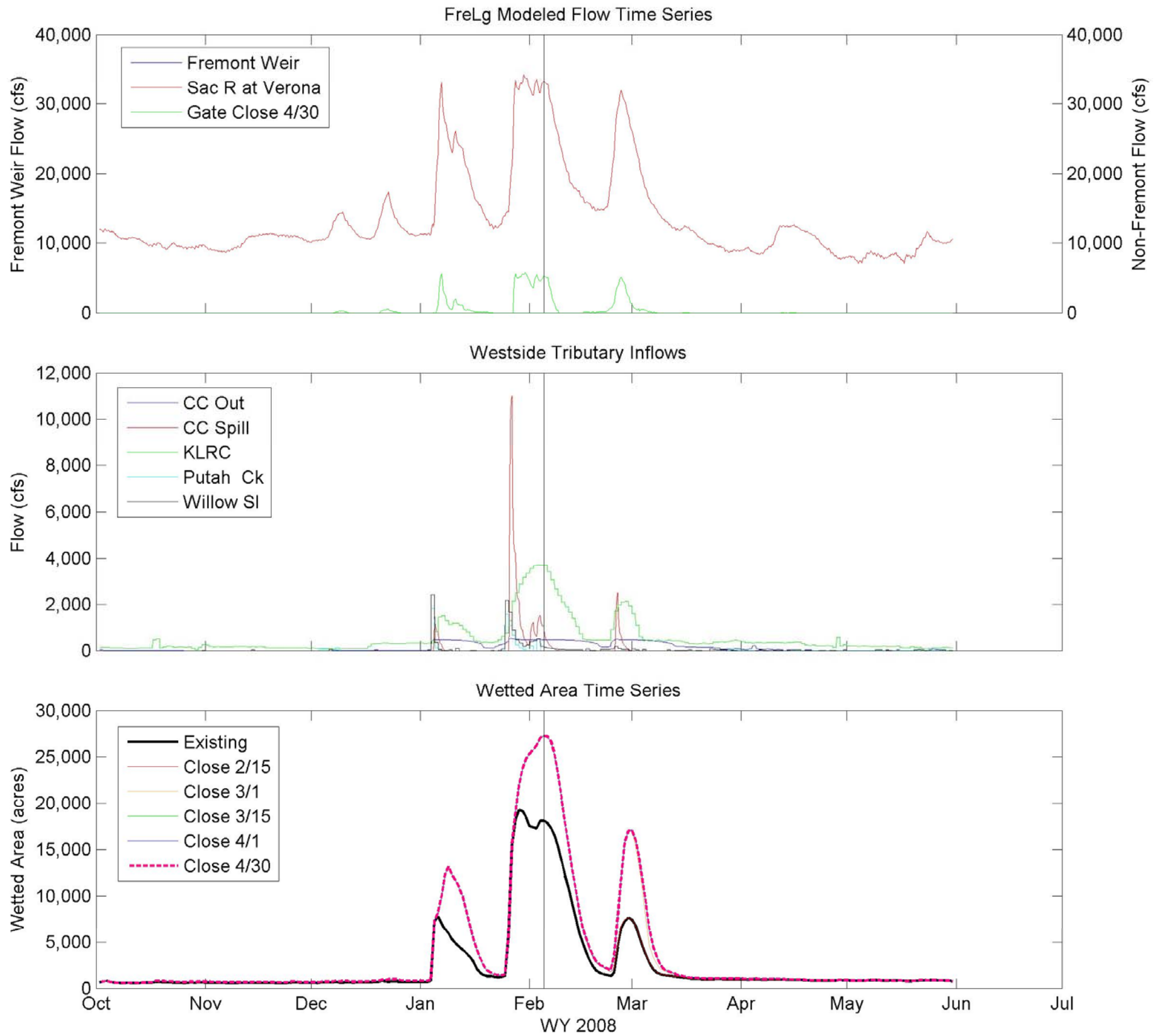
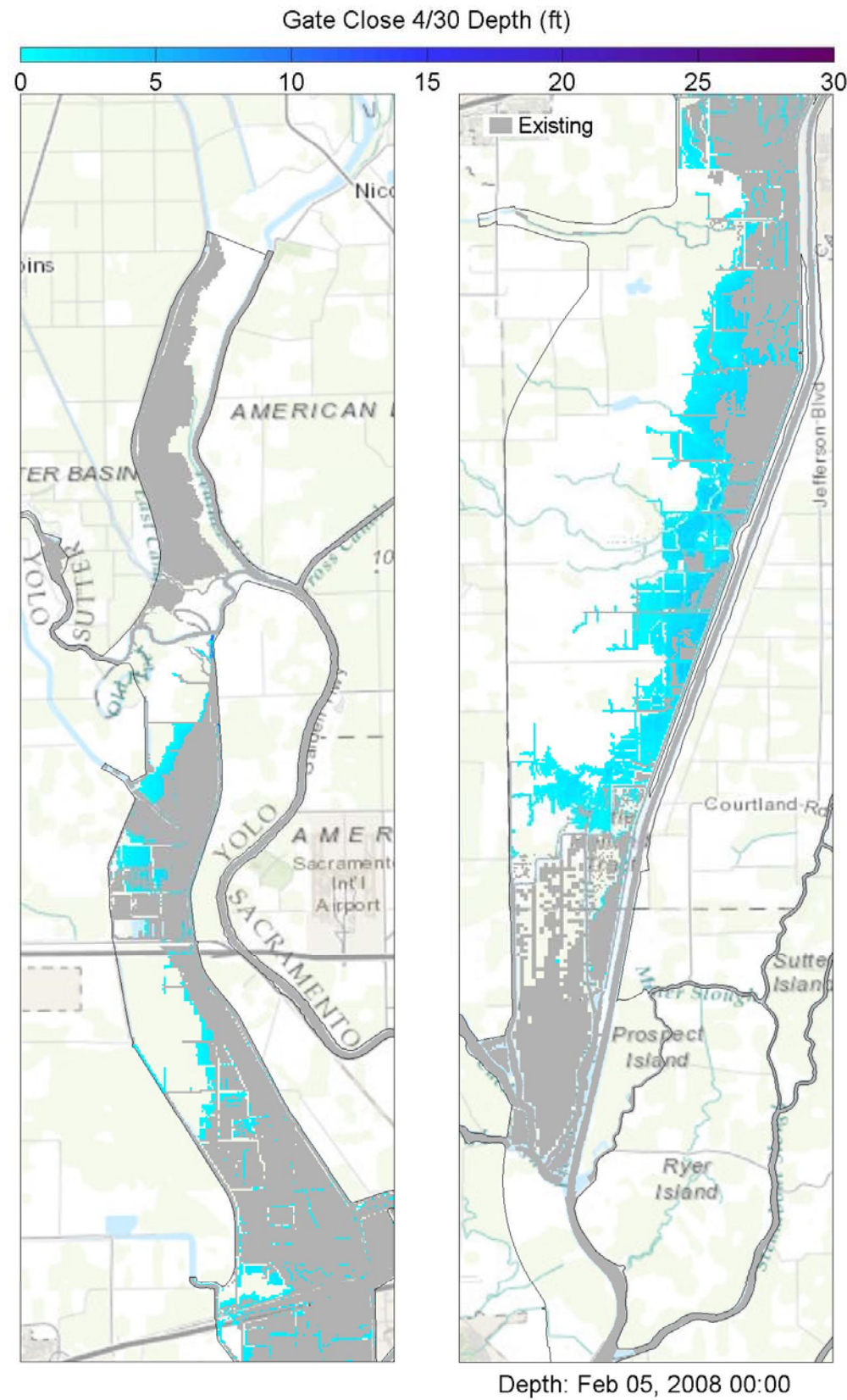
Yolo Bypass Salmonid Habitat Restoration and Fish Passage

Wetted Area Comparison for WY 2007 for FreLg

Prepared for DWR

Created By: SJB

Figure E11



Notes: TUFLOW model results showing 2D inundation patterns (at specified time stamp) for existing and 4/30 gate closure (left panes), Yolo Bypass inflows (upper right panes), and wetted area for all five gate closures (lower right pane). The vertical bar in the right panes corresponds to the time stamp below the left panes, whereby the blue hatching represents 4/30 gate closure conditions as overlain by the grey hatching representing existing conditions.



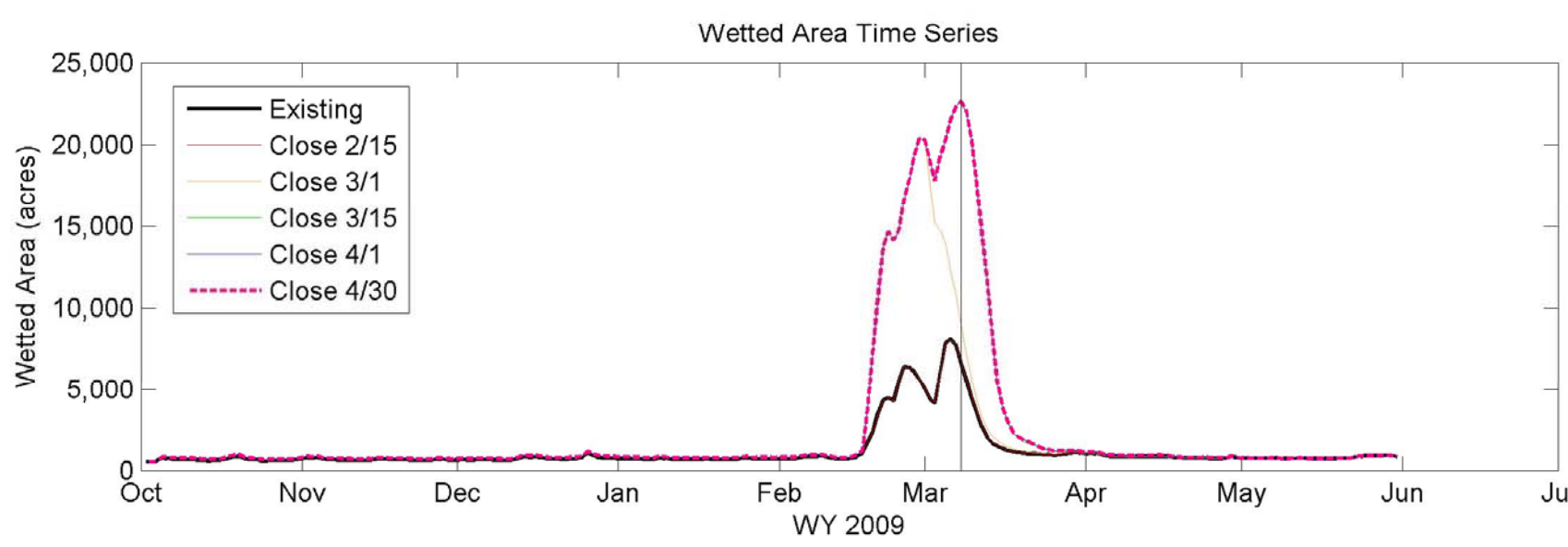
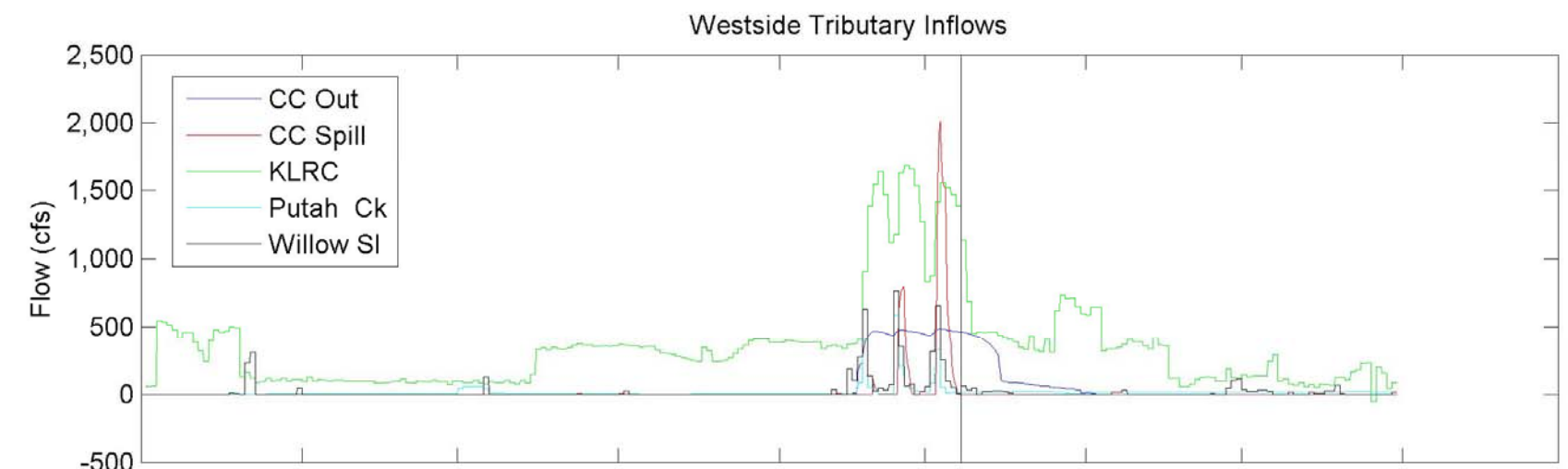
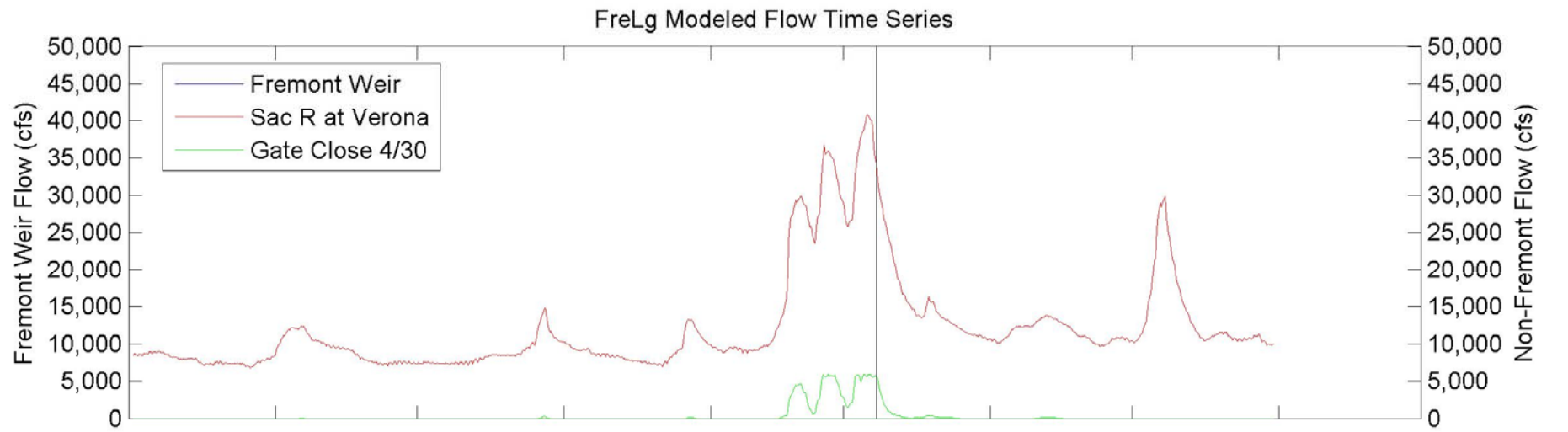
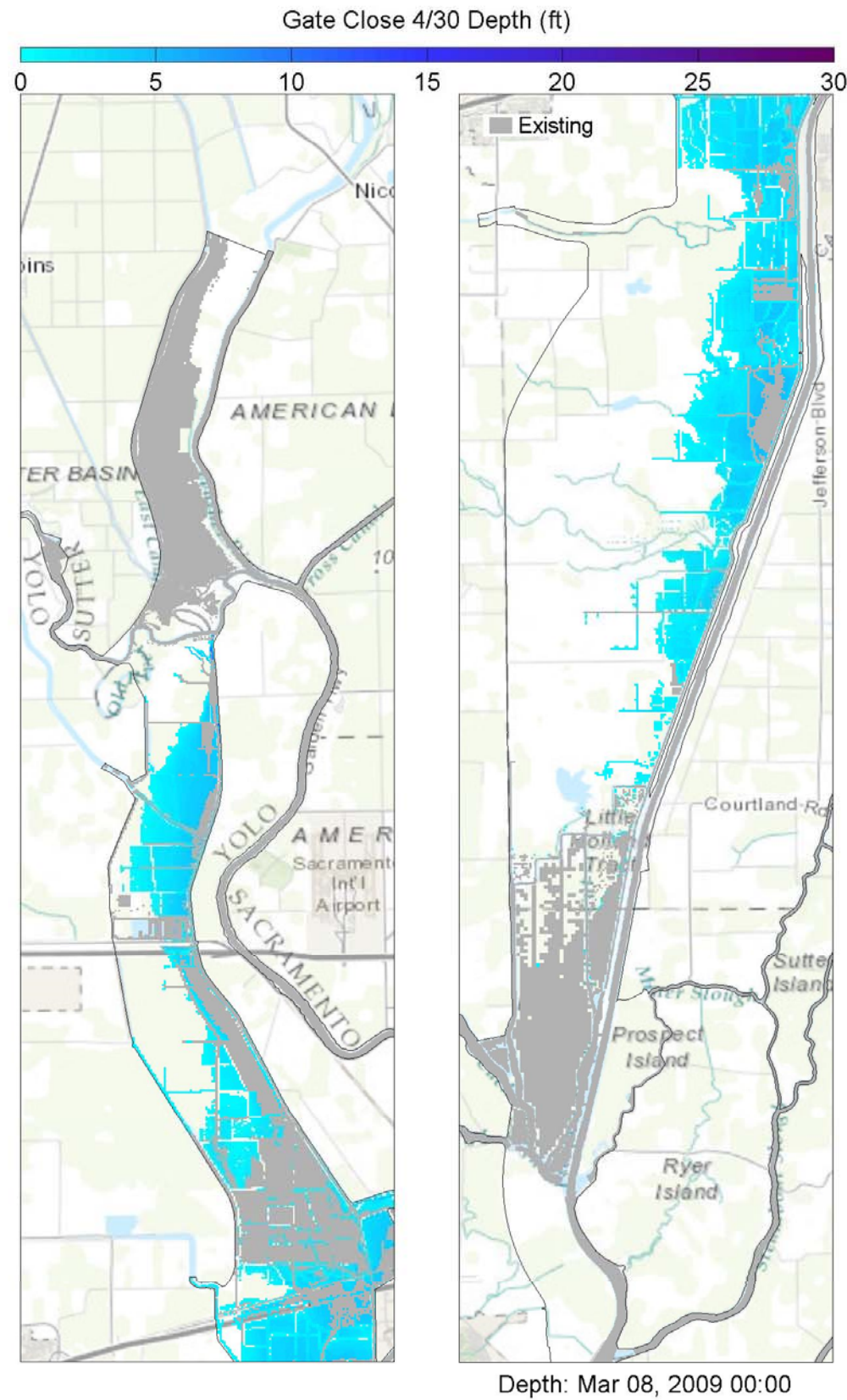
Yolo Bypass Salmonid Habitat Restoration and Fish Passage

Wetted Area Comparison for WY 2008 for FreLg

Prepared for DWR

Created By: SJB

Figure E12



Notes: TUFLOW model results showing 2D inundation patterns (at specified time stamp) for existing and 4/30 gate closure (left panes), Yolo Bypass inflows (upper right panes), and wetted area for all five gate closures (lower right pane). The vertical bar in the right panes corresponds to the time stamp below the left panes, whereby the blue hatching represents 4/30 gate closure conditions as overlain by the grey hatching representing existing conditions.



Yolo Bypass Salmonid Habitat Restoration and Fish Passage

Wetted Area Comparison for WY 2009 for FreLg

Prepared for DWR

Created By: SJB

Figure E13