

Notes:

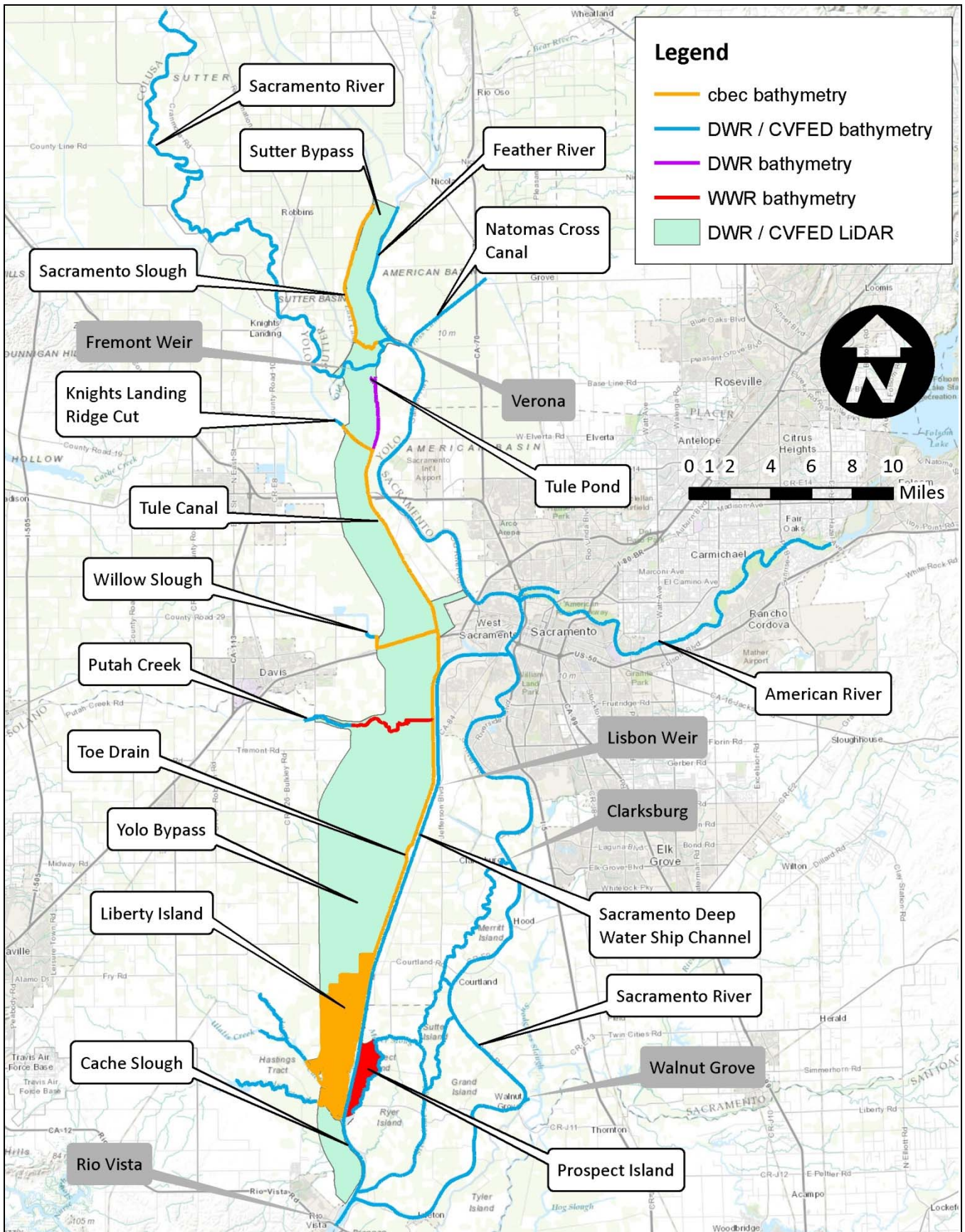


Yolo Bypass Salmonid Habitat Restoration and Fish Passage
Model Domain and Boundary Locations

Prepared for DWR

Created By: SP

Figure 4-1



Notes:

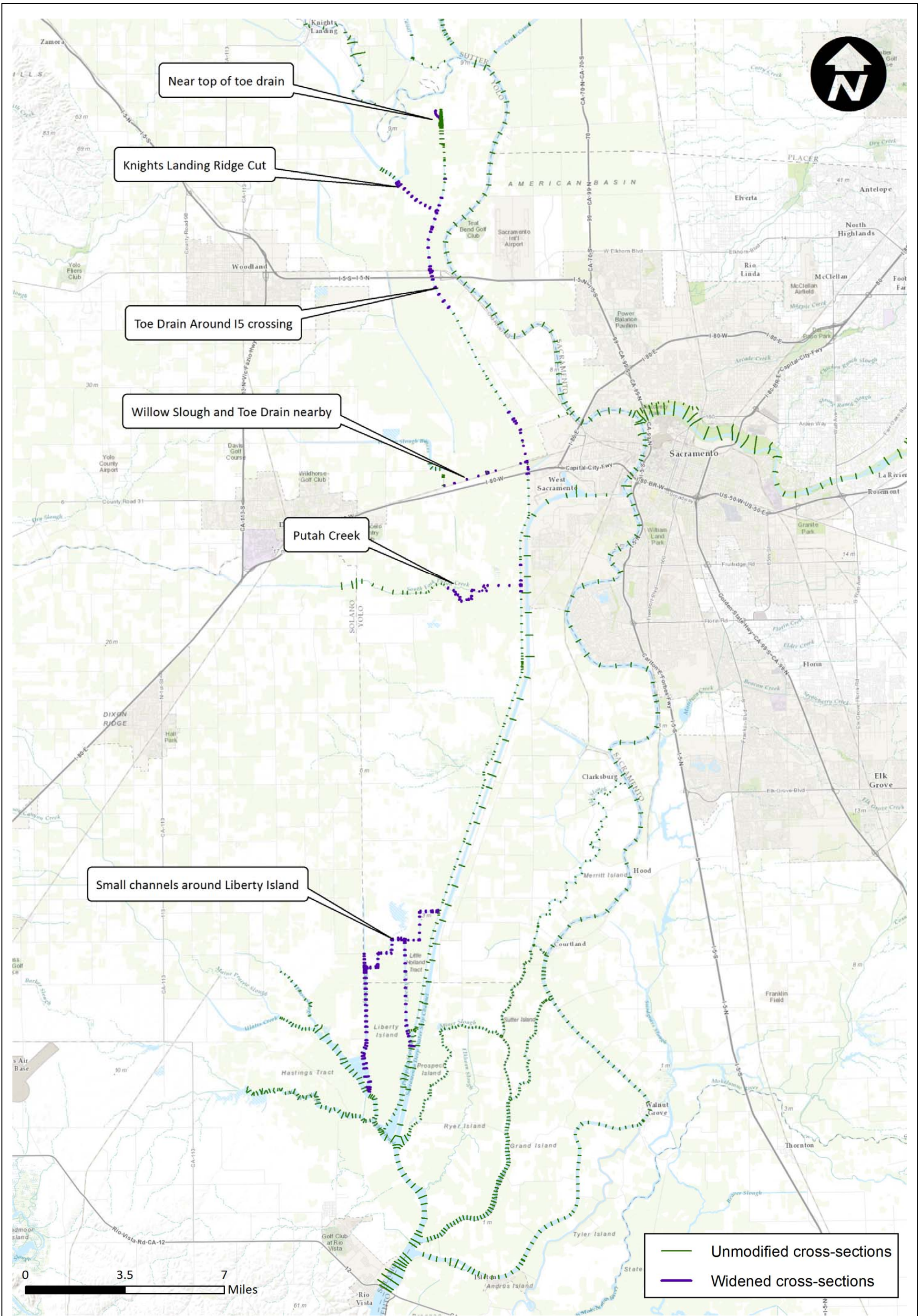


Yolo Bypass Salmonid Habitat Restoration and Fish Passage
Geometric Data Sources

Prepared for DWR

Created By: BT

Figure 4-2



Notes:

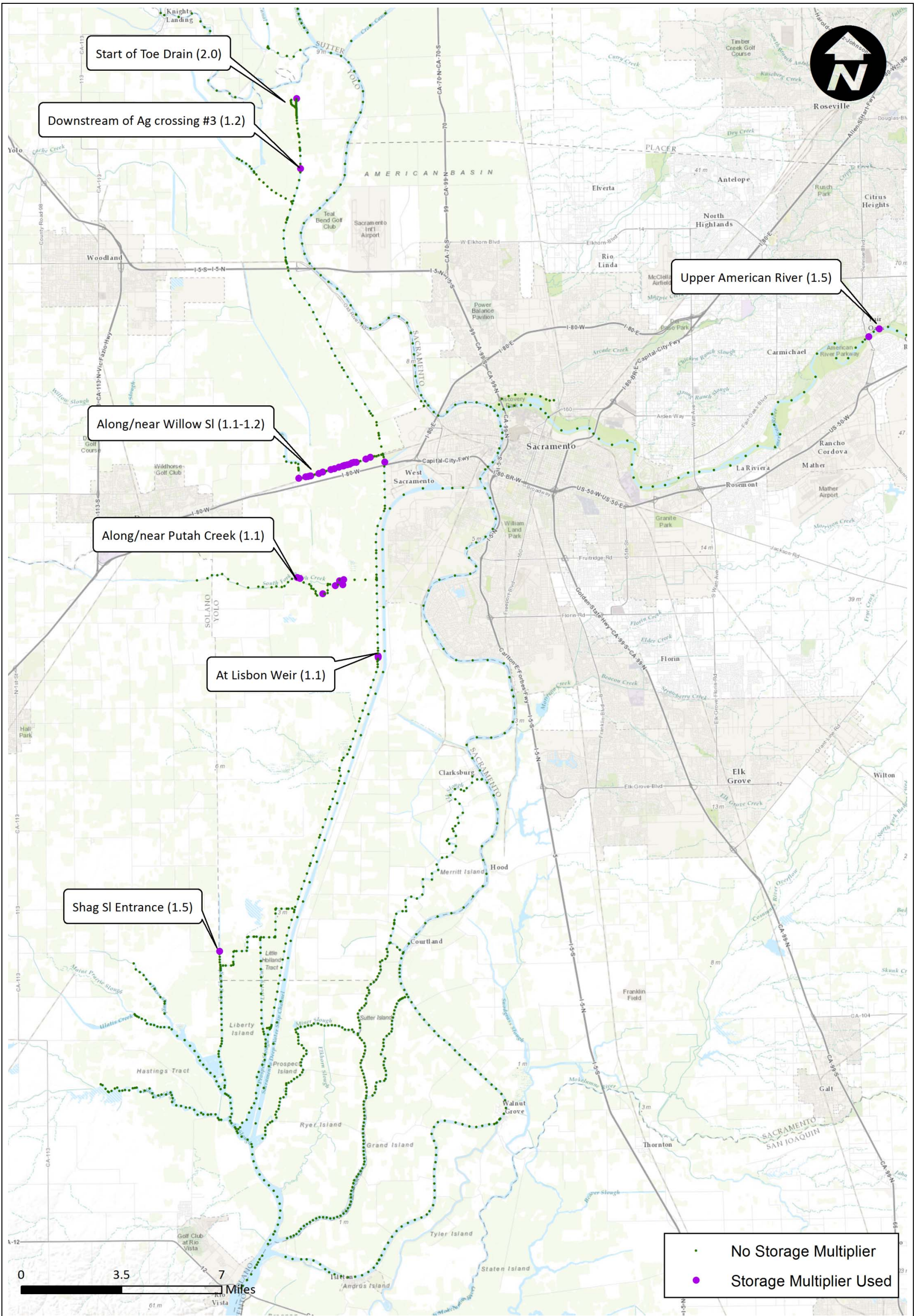


Yolo Bypass Salmonid Habitat Restoration and Fish Passage
Widened Cross-sections

Prepared for DWR

Created By: RDJ

Figure 4-3



Notes:

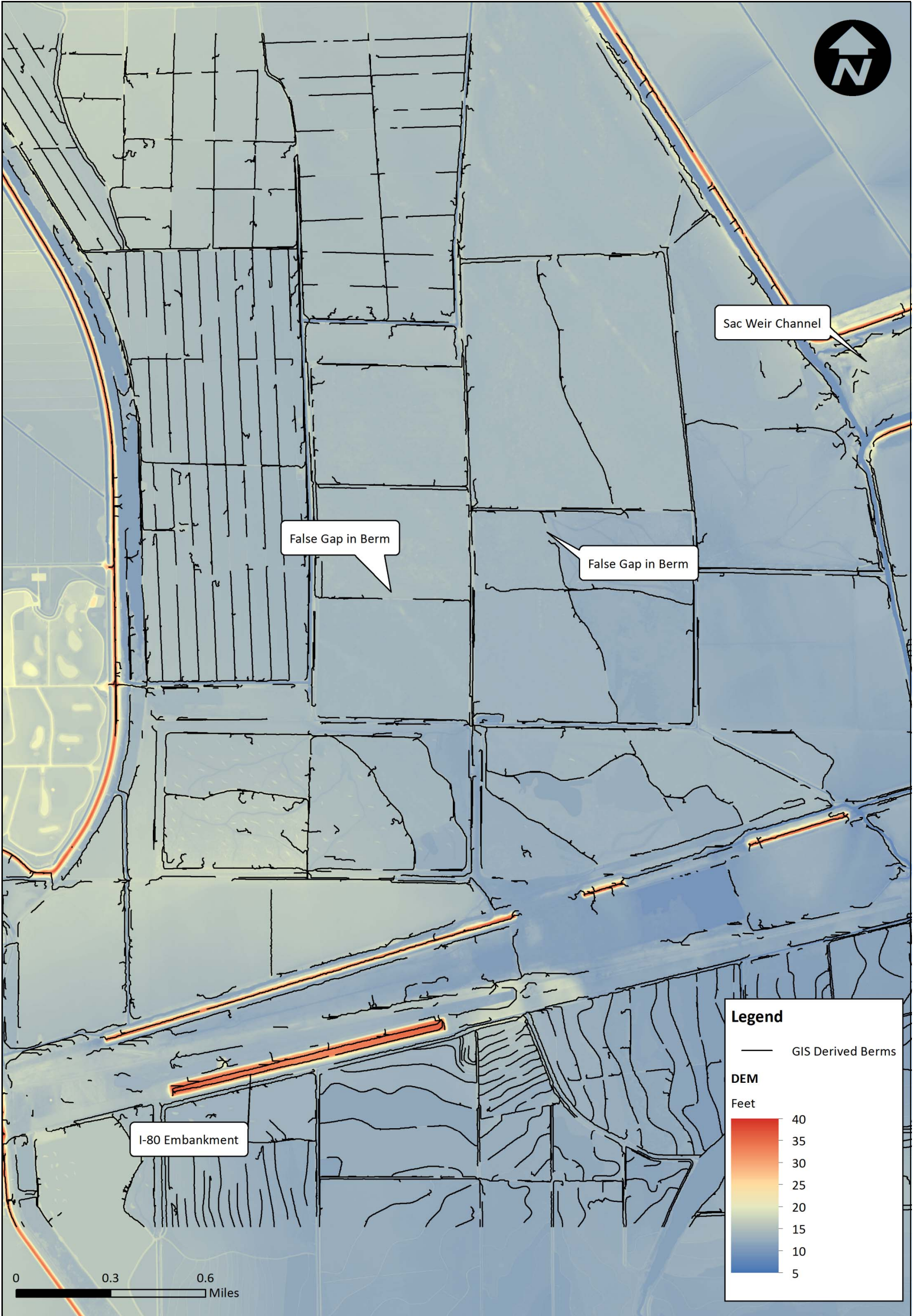


Yolo Bypass Salmonid Habitat Restoration and Fish Passage
Storage Multipliers at 1D Nodes

Prepared for DWR

Created By: RDJ

Figure 4-4



Notes: Showing one tile of several that were processed using GIS utilities

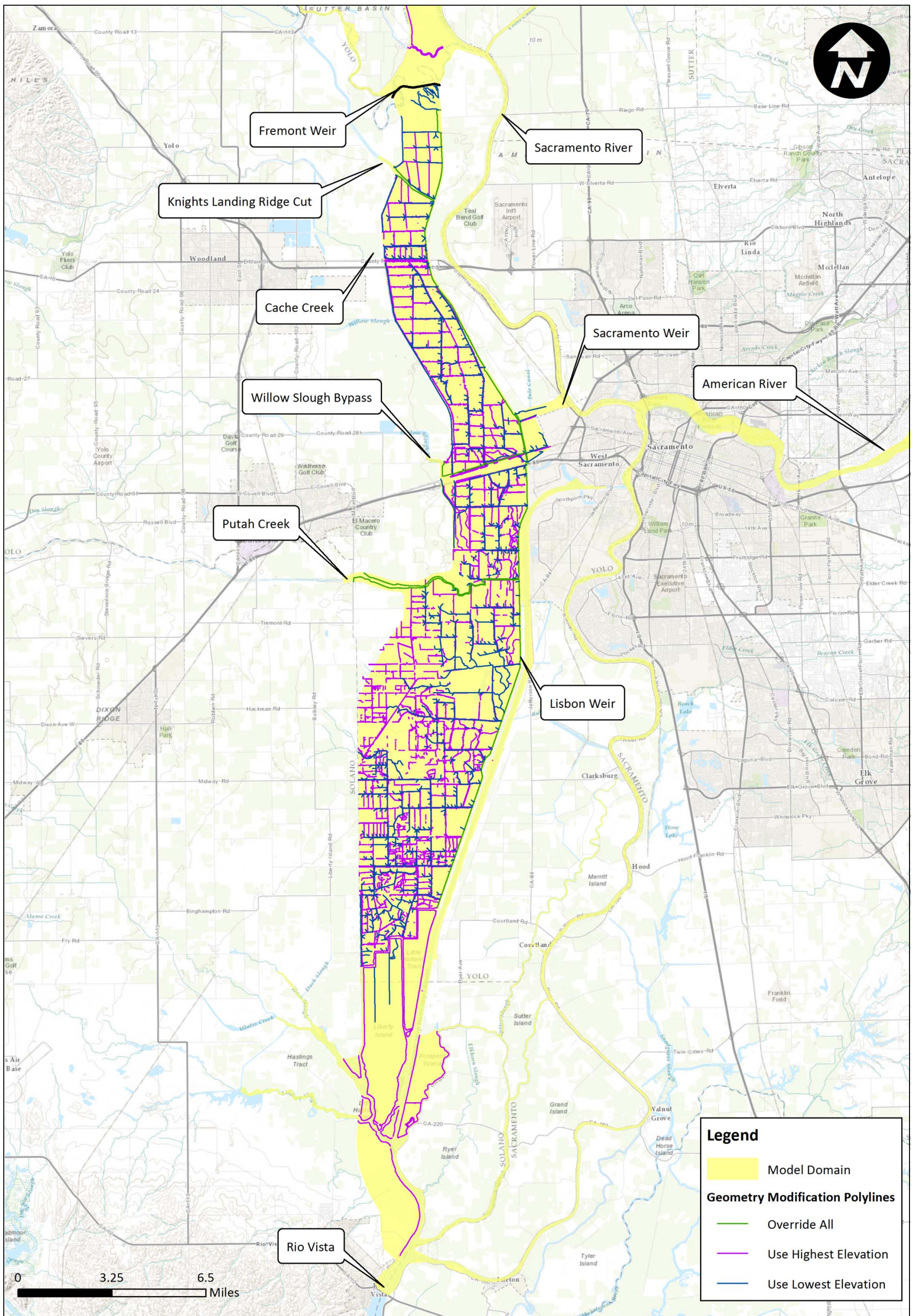


Yolo Bypass Salmonid Habitat Restoration and Fish Passage
Automatically Generated Berm Features

Prepared for DWR

Created By: RDJ

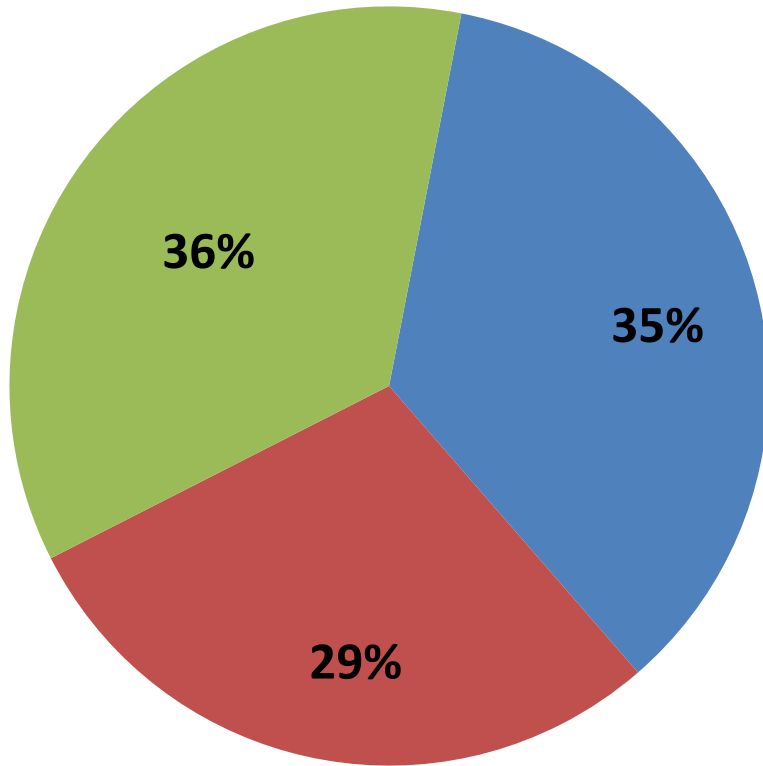
Figure 4-5



Notes:   *Yolo Bypass Salmonid Habitat Restoration and Fish Passage*
Primary Geometry Modification Polylines
 Prepared for DWR Created By: RDJ **Figure 4-6**

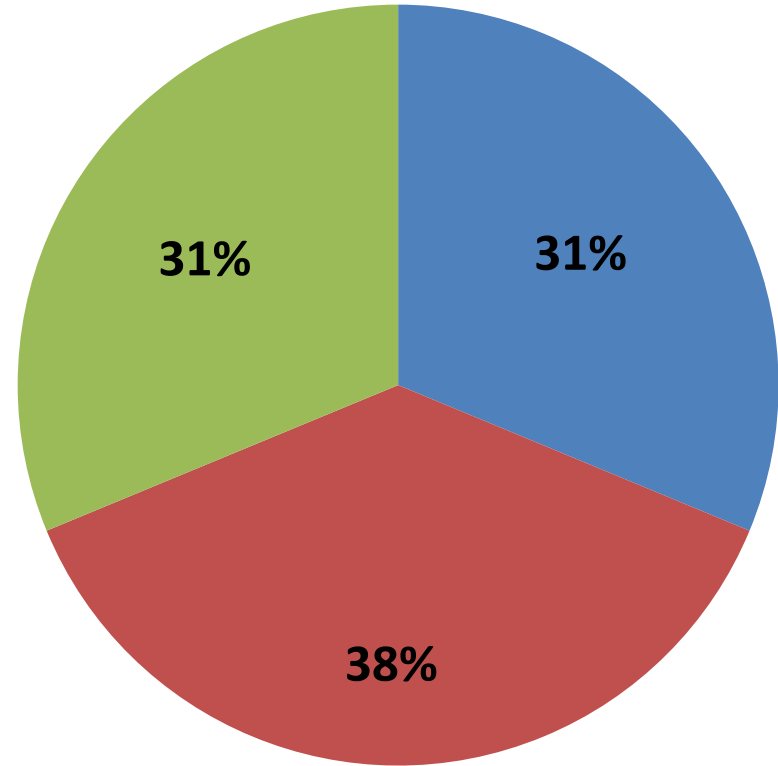
44 WY Range (1968-2012)

■ Critical & Dry ■ Above and Below Normal ■ Wet



16 WY Range (1997-2012)

■ Critical & Dry ■ Above and Below Normal ■ Wet



Notes:



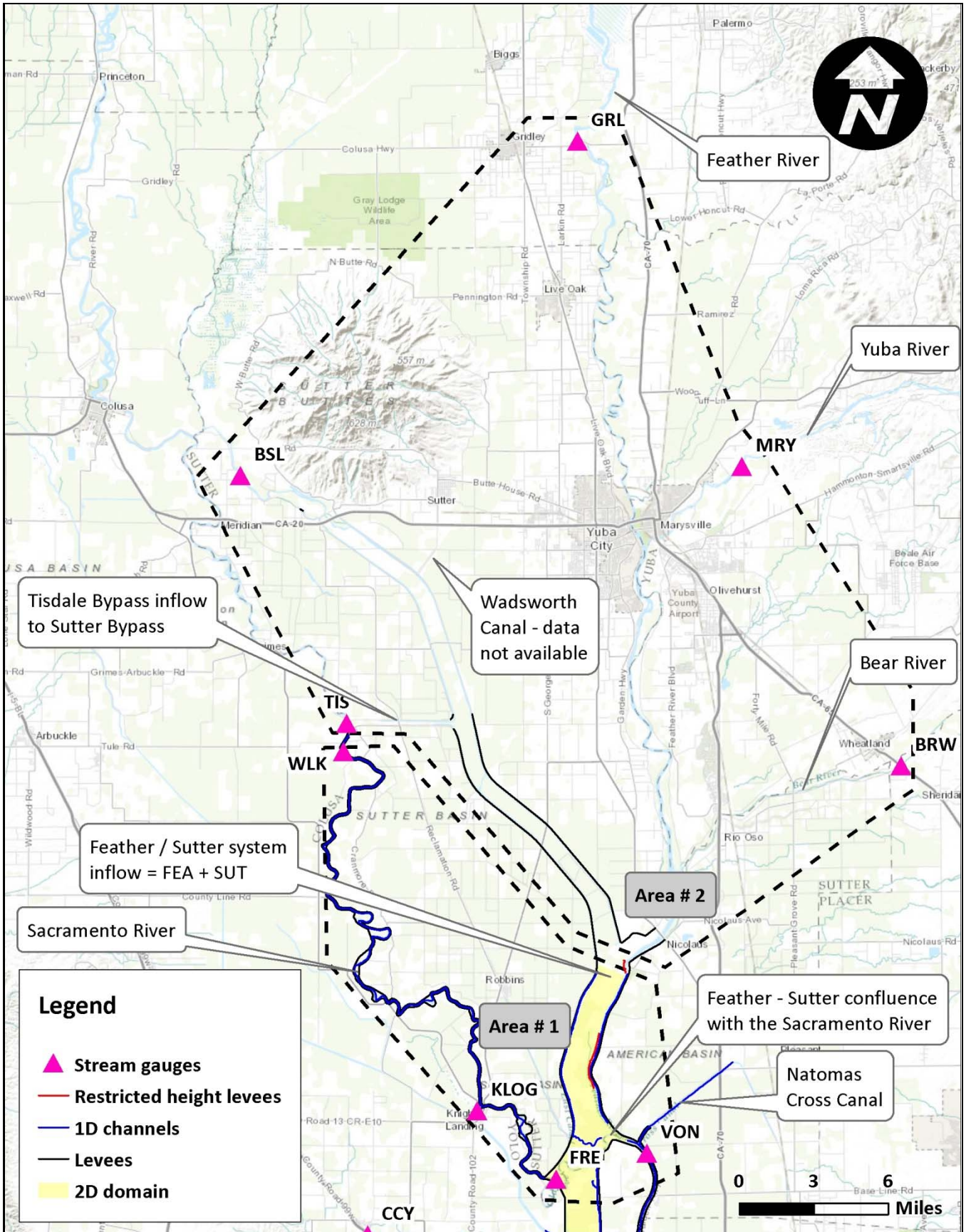
Yolo Bypass Salmonid Habitat Restoration and Fish Passage

Water Year Selection

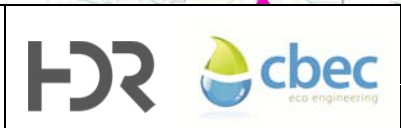
Prepared for DWR

Created By: SJB

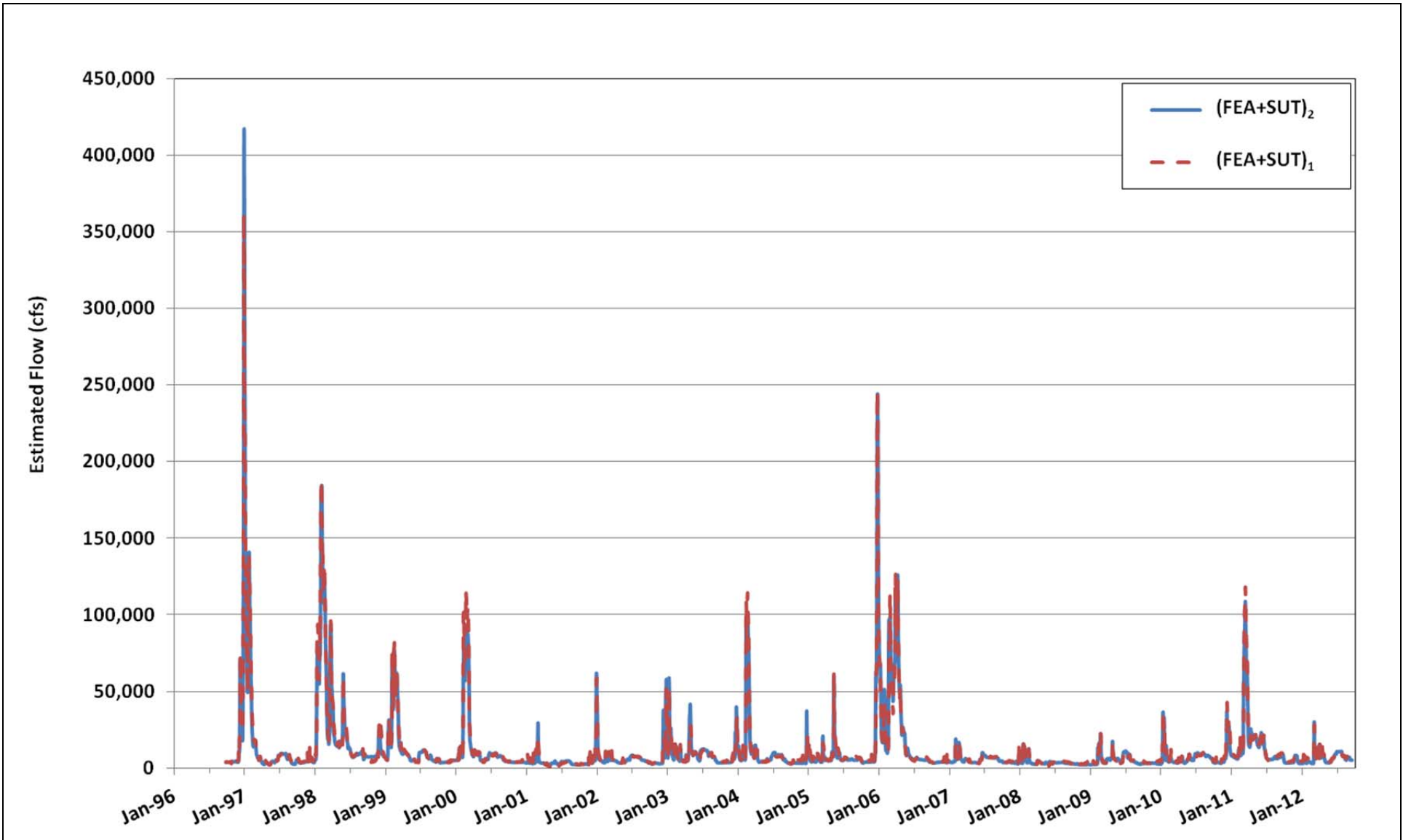
Figure 4-7



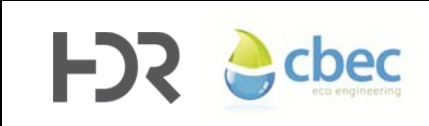
Notes:



Yolo Bypass Salmonid Habitat Restoration and Fish Passage
Feather – Sutter Gauges for Flow Split
 Prepared for DWR Created By: SP **Figure 4-8**

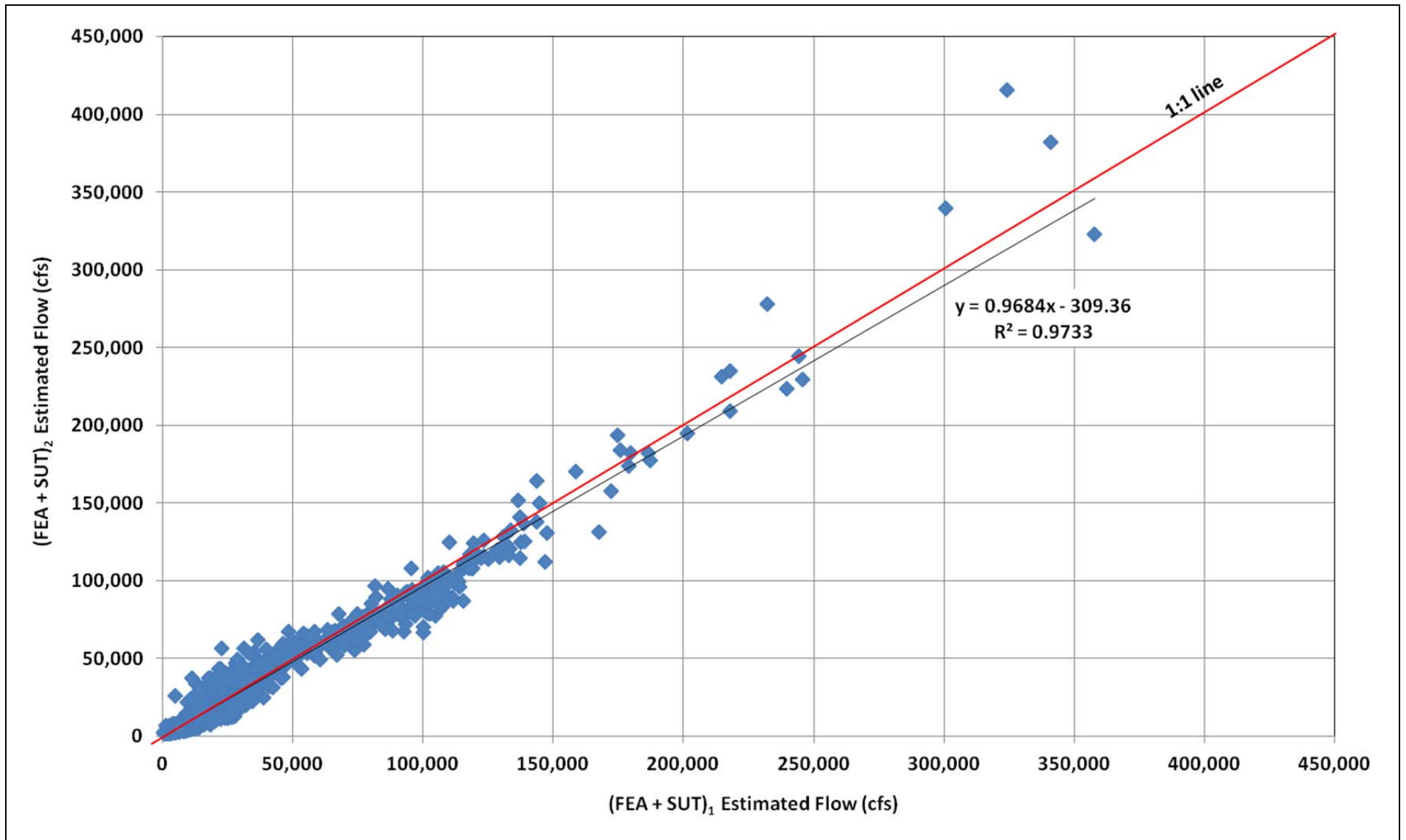


Notes:



Yolo Bypass Salmonid Habitat Restoration and Fish Passage
Feather – Sutter Flow Time Series

Prepared for DWR	Created By: SP	Figure 4-9
------------------	----------------	-------------------



Notes:



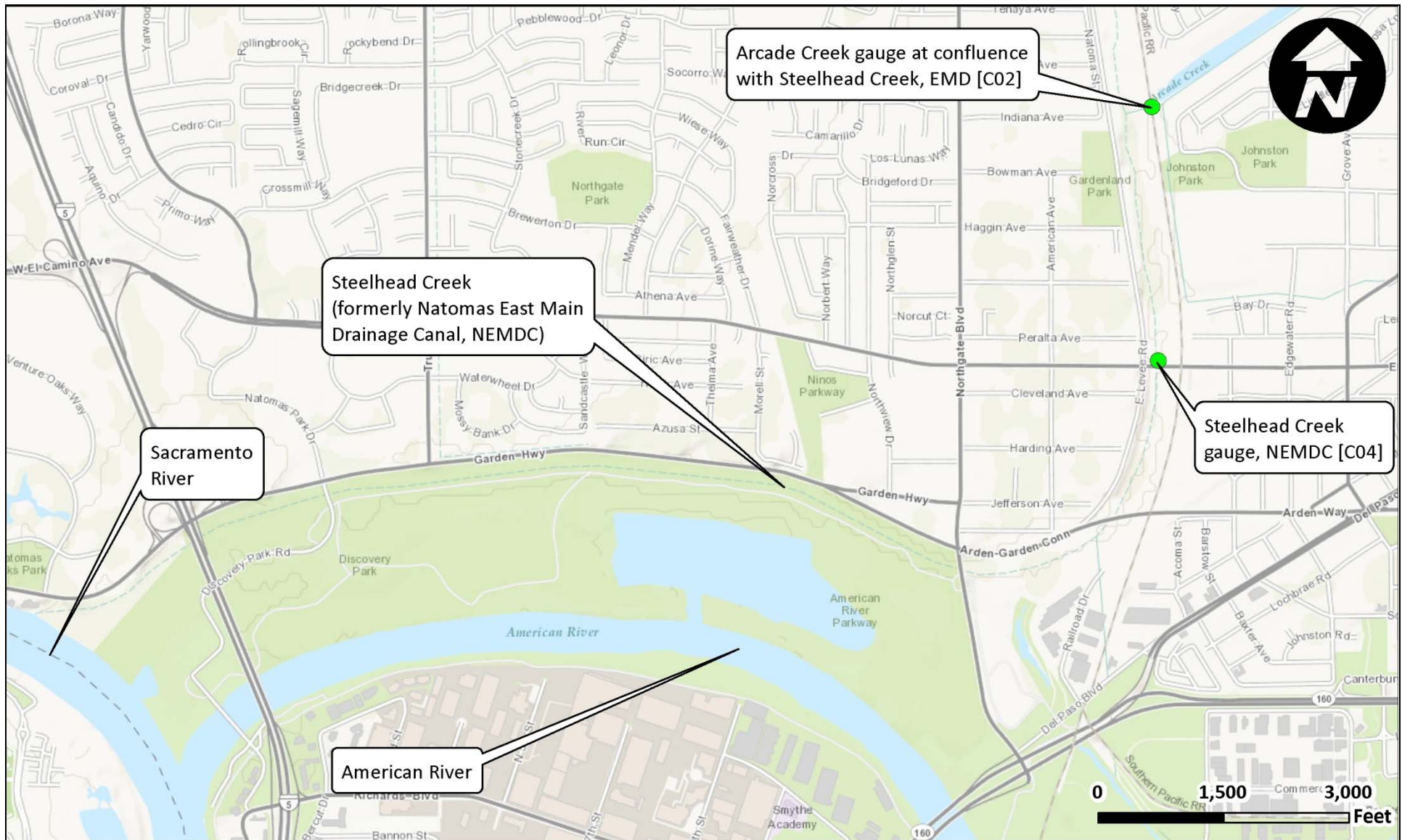
Yolo Bypass Salmonid Habitat Restoration and Fish Passage

Feather – Sutter flow Scatter Plot

Prepared for DWR

Created By: SP

Figure 4-10

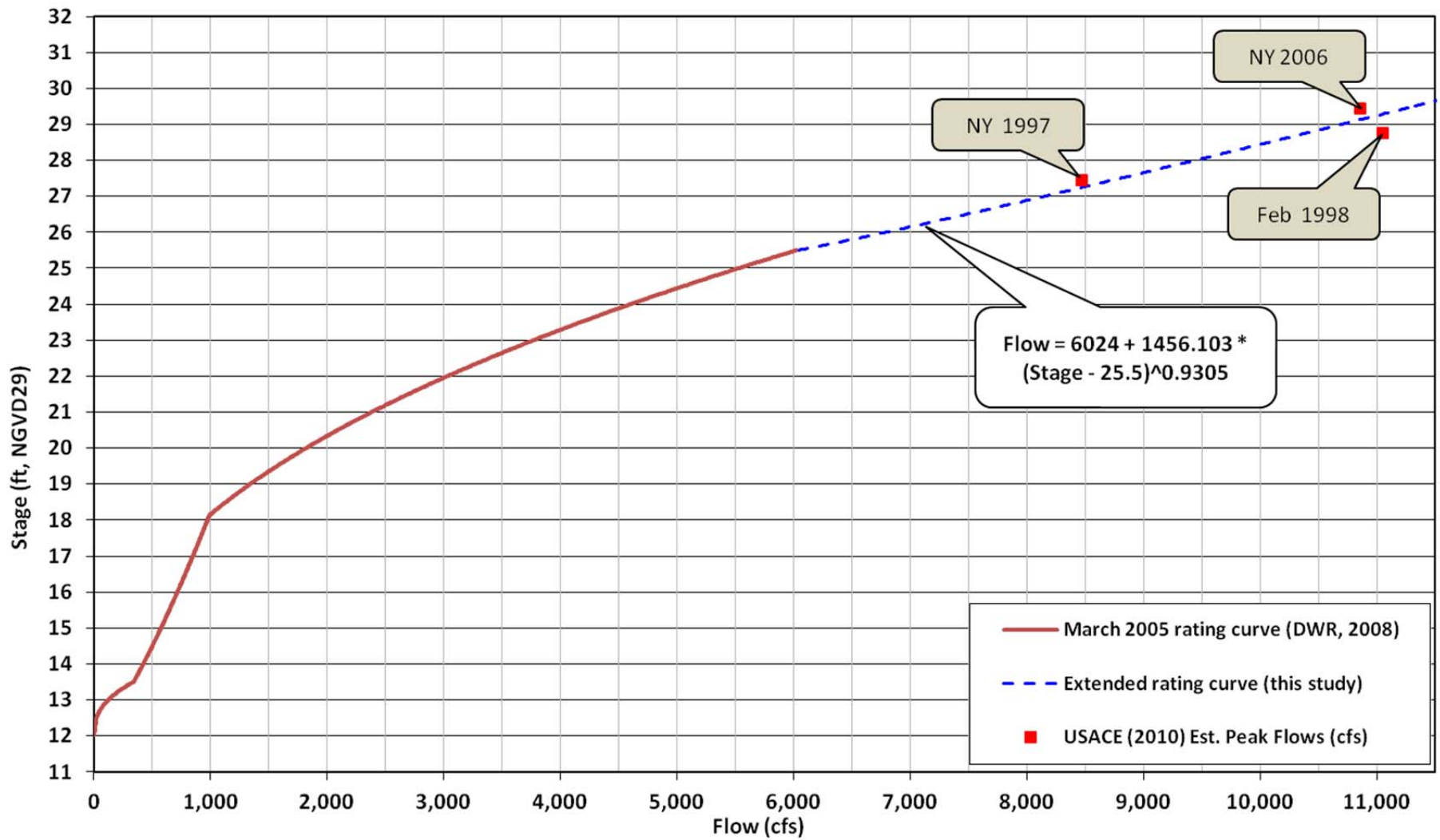


Notes:



Yolo Bypass Salmonid Habitat Restoration and Fish Passage
Steelhead Creek and Arcade Creek Gauges

Prepared for DWR	Created By: SP	Figure 4-11
------------------	----------------	--------------------



Notes:

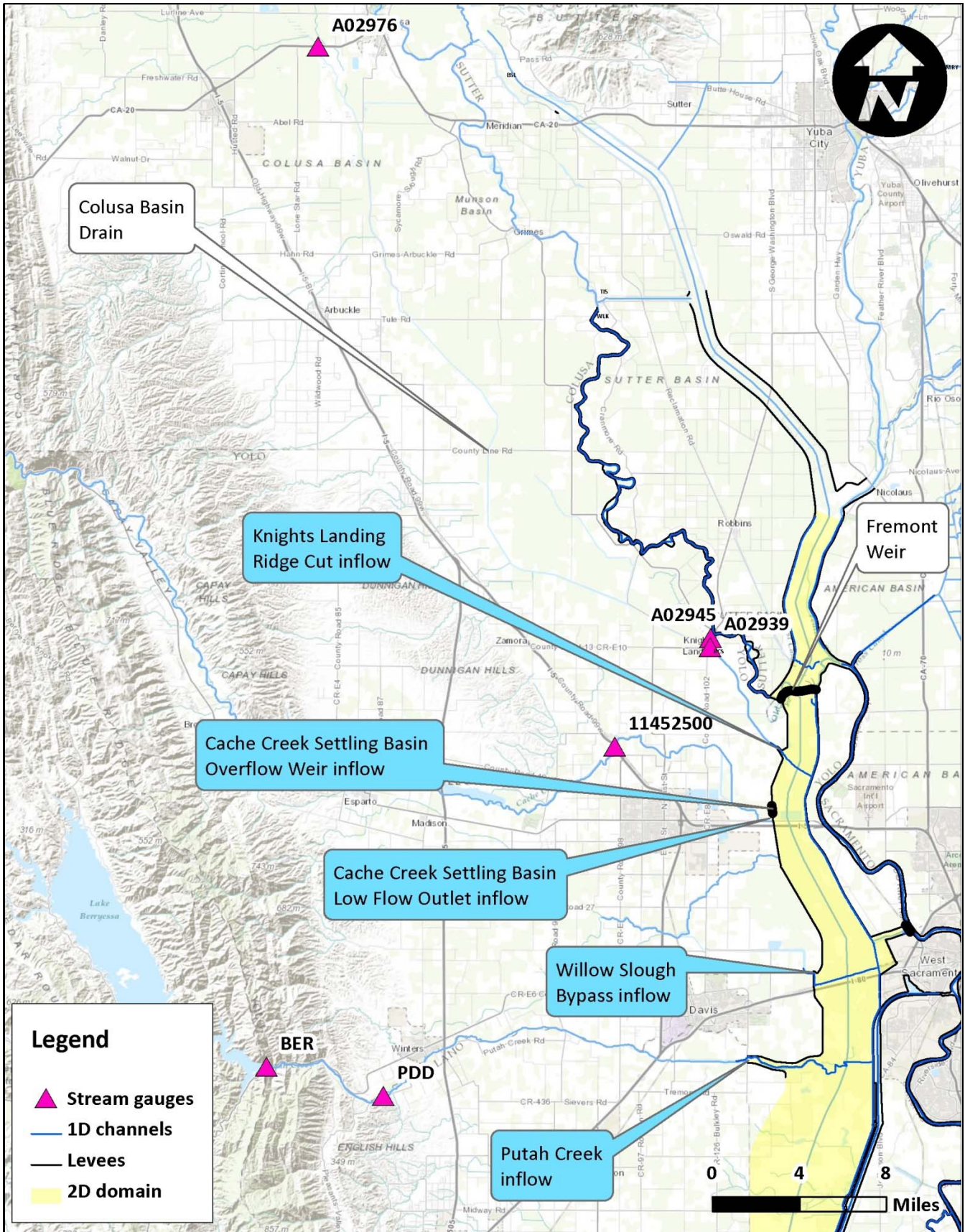


Yolo Bypass Salmonid Habitat Restoration and Fish Passage
Steelhead Creek Updated Rating Curve

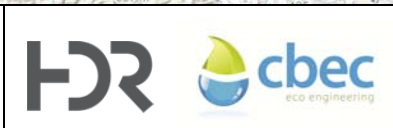
Prepared for DWR

Created By: SP

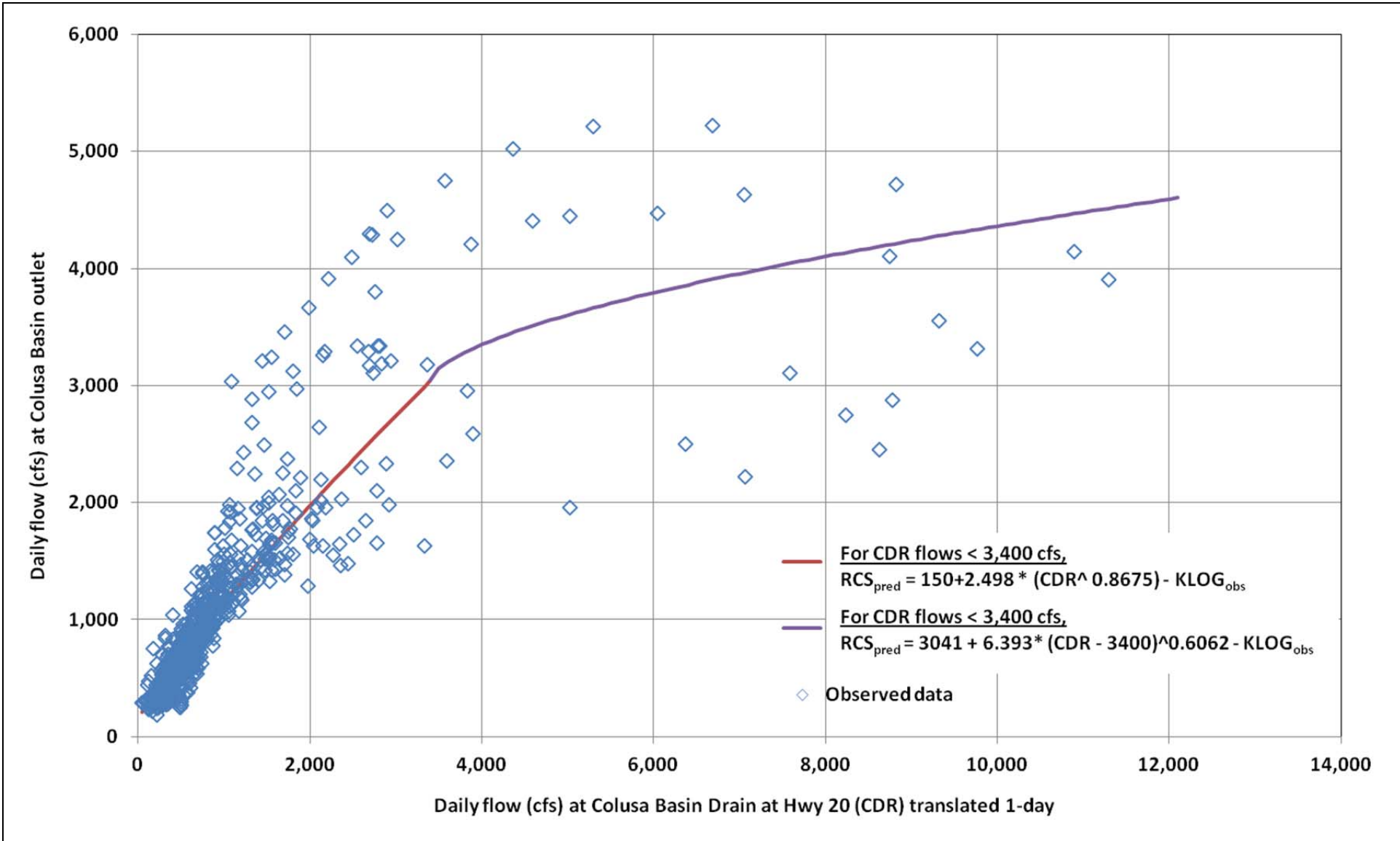
Figure 4-12



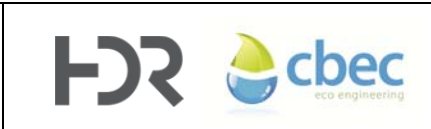
Notes:



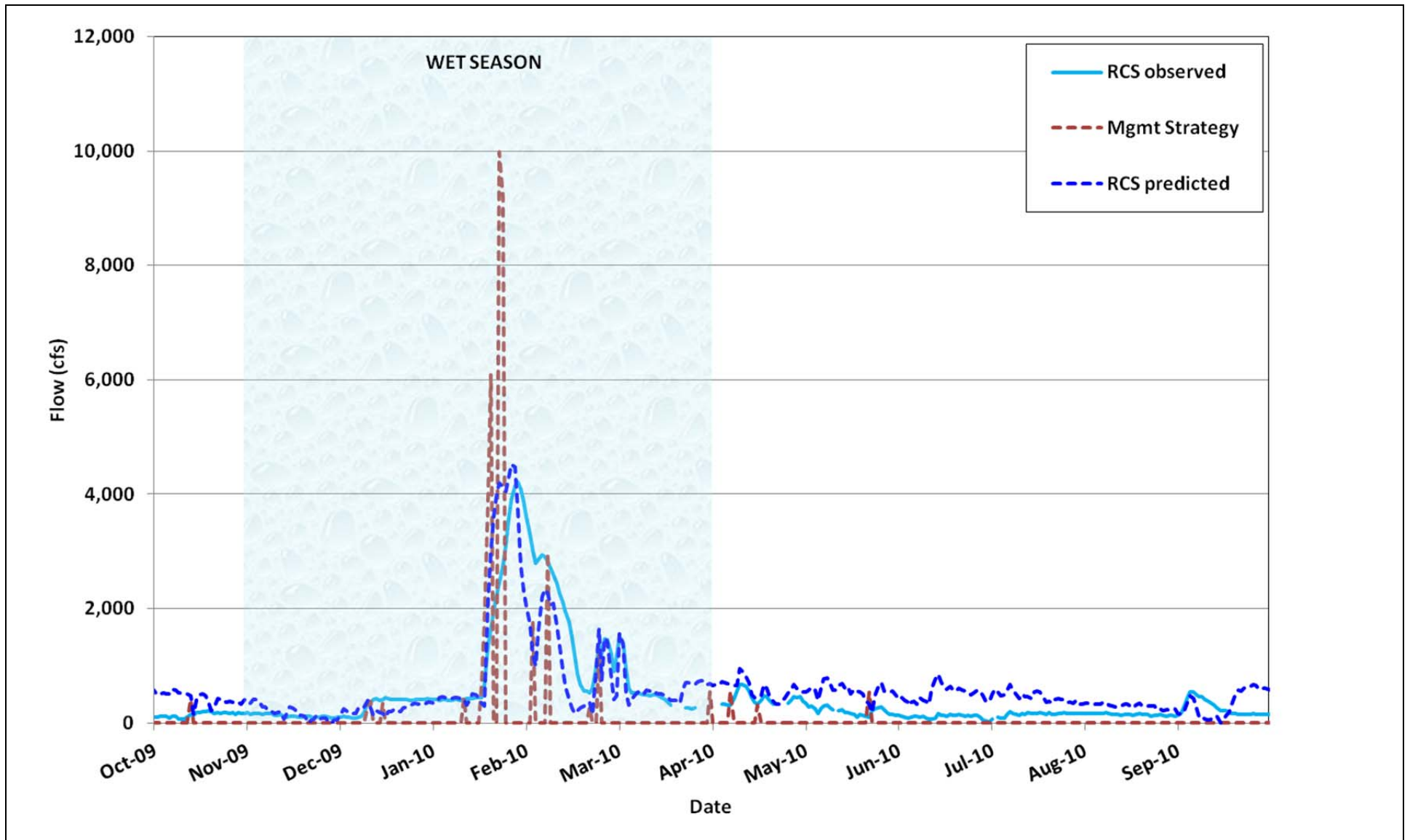
Yolo Bypass Salmonid Habitat Restoration and Fish Passage
Westside Tributaries and Gauges
 Prepared for DWR Created By: SP **Figure 4-13**



Notes:



Yolo Bypass Salmonid Habitat Restoration and Fish Passage
Knights Landing Ridge Cut Inflow
 Prepared for DWR Created By: SP **Figure 4-14**



Notes:



Yolo Bypass Salmonid Habitat Restoration and Fish Passage
KLRC Inflow Validation – WY 2010

Prepared for DWR

Created By: SP

Figure 4-15