

FINAL Environmental Assessment

**One-Year Recapture of San Joaquin River
Restoration Flows at Patterson Irrigation District
and/or Banta-Carbona Irrigation District**

Attachment B – US Fish and Wildlife Service Endangered Species List – October 13, 2015



Patterson Irrigation District

IPaC Trust Resource Report

Generated October 14, 2015 08:40 AM MDT

This report is for informational purposes only and should not be used for planning or analyzing project-level impacts. For projects that require FWS review, please return to this project on the IPaC website and request an official species list from the Regulatory Documents page.



US Fish & Wildlife Service

IPaC Trust Resource Report



Project Description

NAME

Patterson Irrigation District

PROJECT CODE

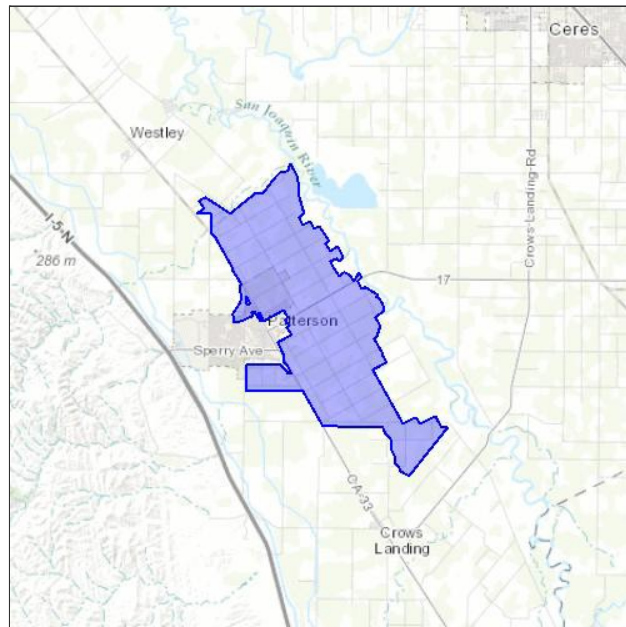
6KZZD-GJPWJ-DNNOV-7TJNG-KUVEGE

LOCATION

Stanislaus County, California

DESCRIPTION

No description provided



U.S. Fish & Wildlife Contact Information

Species in this report are managed by:

Sacramento Fish And Wildlife Office

Federal Building

2800 COTTAGE WAY, ROOM W-2605

Sacramento, CA 95825-1846

(916) 414-6600

Endangered Species

Proposed, candidate, threatened, and endangered species that are managed by the Endangered Species Program and should be considered as part of an effect analysis for this project.

This unofficial species list is for informational purposes only and does not fulfill the requirements under Section 7 of the Endangered Species Act, which states that Federal agencies are required to "request of the Secretary of Interior information whether any species which is listed or proposed to be listed may be present in the area of a proposed action." This requirement applies to projects which are conducted, permitted or licensed by any Federal agency.

A letter from the local office and a species list which fulfills this requirement can be obtained by returning to this project on the IPaC website and requesting an official species list on the Regulatory Documents page.

Amphibians

California Red-legged Frog *Rana draytonii*

Threatened

CRITICALHABITAT

There is **final** critical habitat designated for this species.

<https://ecos.fws.gov/speciesProfile/profile/speciesProfile.action?spcode=D02D>

California Tiger Salamander *Ambystoma californiense*

Threatened

CRITICALHABITAT

There is **final** critical habitat designated for this species.

<https://ecos.fws.gov/speciesProfile/profile/speciesProfile.action?spcode=D01T>

Birds

Least Bell's Vireo *Vireo bellii pusillus*

Endangered

CRITICALHABITAT

There is **final** critical habitat designated for this species.

<https://ecos.fws.gov/speciesProfile/profile/speciesProfile.action?spcode=B067>

Crustaceans

Conservancy Fairy Shrimp *Branchinecta conservatio* Endangered

CRITICALHABITAT

There is **final** critical habitat designated for this species.

<https://ecos.fws.gov/speciesProfile/profile/speciesProfile.action?spcode=K03D>

Vernal Pool Fairy Shrimp *Branchinecta lynchi* Threatened

CRITICALHABITAT

There is **final** critical habitat designated for this species.

<https://ecos.fws.gov/speciesProfile/profile/speciesProfile.action?spcode=K03G>

Vernal Pool Tadpole Shrimp *Lepidurus packardii* Endangered

CRITICALHABITAT

There is **final** critical habitat designated for this species.

<https://ecos.fws.gov/speciesProfile/profile/speciesProfile.action?spcode=K048>

Fishes

Delta Smelt *Hypomesus transpacificus* Threatened

CRITICALHABITAT

There is **final** critical habitat designated for this species.

<https://ecos.fws.gov/speciesProfile/profile/speciesProfile.action?spcode=E070>

Steelhead *Oncorhynchus (=Salmo) mykiss* Threatened

CRITICALHABITAT

There is **final** critical habitat designated for this species.

<https://ecos.fws.gov/speciesProfile/profile/speciesProfile.action?spcode=E08D>

Insects

Valley Elderberry Longhorn Beetle *Desmocerus californicus dimorphus* Threatened

CRITICALHABITAT

There is **final** critical habitat designated for this species.

<https://ecos.fws.gov/speciesProfile/profile/speciesProfile.action?spcode=I01L>

Mammals

Riparian Brush Rabbit *Sylvilagus bachmani riparius* Endangered

CRITICALHABITAT

No critical habitat has been designated for this species.

<https://ecos.fws.gov/speciesProfile/profile/speciesProfile.action?spcode=A0DN>

San Joaquin Kit Fox *Vulpes macrotis mutica* Endangered

CRITICALHABITAT

No critical habitat has been designated for this species.

<https://ecos.fws.gov/speciesProfile/profile/speciesProfile.action?spcode=A006>

Reptiles

Blunt-nosed Leopard Lizard *Gambelia silus*

Endangered

CRITICALHABITAT

No critical habitat has been designated for this species.<https://ecos.fws.gov/speciesProfile/profile/speciesProfile.action?sPCODE=C001>

Giant Garter Snake *Thamnophis gigas*

Threatened

CRITICALHABITAT

No critical habitat has been designated for this species.<https://ecos.fws.gov/speciesProfile/profile/speciesProfile.action?sPCODE=C057>

Critical Habitats

Potential effects to critical habitat(s) within the project area must be analyzed along with the endangered species themselves.

Steelhead Critical Habitat Final designated

<https://ecos.fws.gov/speciesProfile/profile/speciesProfile.action?sPCODE=E08D#crithab>

Migratory Birds

Birds are protected by the [Migratory Bird Treaty Act](#) and the Bald and Golden Eagle Protection Act.

Any activity which results in the take of migratory birds or eagles is prohibited unless authorized by the U.S. Fish and Wildlife Service ([1](#)). There are no provisions for allowing the take of migratory birds that are unintentionally killed or injured.

You are responsible for complying with the appropriate regulations for the protection of birds as part of this project. This involves analyzing potential impacts and implementing appropriate conservation measures for all project activities.

<p>Bald Eagle <i>Haliaeetus leucocephalus</i> Year-round https://ecos.fws.gov/speciesProfile/profile/speciesProfile.action?spcode=B008</p>	Bird of conservation concern
<p>Black Rail <i>Laterallus jamaicensis</i> Season: Breeding https://ecos.fws.gov/speciesProfile/profile/speciesProfile.action?spcode=B09A</p>	Bird of conservation concern
<p>Burrowing Owl <i>Athene cunicularia</i> Year-round</p>	Bird of conservation concern
<p>California Spotted Owl <i>Strix occidentalis occidentalis</i> Year-round https://ecos.fws.gov/speciesProfile/profile/speciesProfile.action?spcode=B08L</p>	Bird of conservation concern
<p>Costa's Hummingbird <i>Calypte costae</i> Season: Breeding</p>	Bird of conservation concern
<p>Fox Sparrow <i>Passerella iliaca</i> Season: Wintering</p>	Bird of conservation concern
<p>Lawrence's Goldfinch <i>Carduelis lawrencei</i> Season: Breeding https://ecos.fws.gov/speciesProfile/profile/speciesProfile.action?spcode=B0J8</p>	Bird of conservation concern
<p>Least Bittern <i>Ixobrychus exilis</i> Season: Breeding</p>	Bird of conservation concern
<p>Lesser Yellowlegs <i>Tringa flavipes</i> Season: Wintering</p>	Bird of conservation concern
<p>Lewis's Woodpecker <i>Melanerpes lewis</i> Season: Wintering</p>	Bird of conservation concern
<p>Loggerhead Shrike <i>Lanius ludovicianus</i> Year-round https://ecos.fws.gov/speciesProfile/profile/speciesProfile.action?spcode=B0FY</p>	Bird of conservation concern
<p>Long-billed Curlew <i>Numenius americanus</i> Season: Wintering https://ecos.fws.gov/speciesProfile/profile/speciesProfile.action?spcode=B06S</p>	Bird of conservation concern
<p>Marbled Godwit <i>Limosa fedoa</i> Season: Wintering https://ecos.fws.gov/speciesProfile/profile/speciesProfile.action?spcode=B0JL</p>	Bird of conservation concern

Mountain Plover <i>Charadrius montanus</i> Season: Wintering https://ecos.fws.gov/speciesProfile/profile/speciesProfile.action?spcode=B078	Bird of conservation concern
Nuttall's Woodpecker <i>Picoides nuttallii</i> Year-round	Bird of conservation concern
Peregrine Falcon <i>Falco peregrinus</i> Year-round https://ecos.fws.gov/speciesProfile/profile/speciesProfile.action?spcode=B0FU	Bird of conservation concern
Short-billed Dowitcher <i>Limnodromus griseus</i> Season: Wintering	Bird of conservation concern
Short-eared Owl <i>Asio flammeus</i> Season: Wintering https://ecos.fws.gov/speciesProfile/profile/speciesProfile.action?spcode=B0HD	Bird of conservation concern
Swainson's Hawk <i>Buteo swainsoni</i> Season: Breeding https://ecos.fws.gov/speciesProfile/profile/speciesProfile.action?spcode=B070	Bird of conservation concern
Tricolored Blackbird <i>Agelaius tricolor</i> Year-round https://ecos.fws.gov/speciesProfile/profile/speciesProfile.action?spcode=B06P	Bird of conservation concern
Yellow-billed Magpie <i>Pica nuttalli</i> Year-round https://ecos.fws.gov/speciesProfile/profile/speciesProfile.action?spcode=B0N8	Bird of conservation concern

Refuges

Any activity proposed on [National Wildlife Refuge](#) lands must undergo a 'Compatibility Determination' conducted by the Refuge. If your project overlaps or otherwise impacts a Refuge, please contact that Refuge to discuss the authorization process.

There are no refuges within this project area

Wetlands

Impacts to [NWI wetlands](#) and other aquatic habitats from your project may be subject to regulation under Section 404 of the Clean Water Act, or other State/Federal Statutes.

Project proponents should discuss the relationship of these requirements to their project with the Regulatory Program of the appropriate [U.S. Army Corps of Engineers District](#).

DATA LIMITATIONS

The Service's objective of mapping wetlands and deepwater habitats is to produce reconnaissance level information on the location, type and size of these resources. The maps are prepared from the analysis of high altitude imagery. Wetlands are identified based on vegetation, visible hydrology and geography. A margin of error is inherent in the use of imagery; thus, detailed on-the-ground inspection of any particular site may result in revision of the wetland boundaries or classification established through image analysis.

The accuracy of image interpretation depends on the quality of the imagery, the experience of the image analysts, the amount and quality of the collateral data and the amount of ground truth verification work conducted. Metadata should be consulted to determine the date of the source imagery used and any mapping problems.

Wetlands or other mapped features may have changed since the date of the imagery or field work. There may be occasional differences in polygon boundaries or classifications between the information depicted on the map and the actual conditions on site.

DATA EXCLUSIONS

Certain wetland habitats are excluded from the National mapping program because of the limitations of aerial imagery as the primary data source used to detect wetlands. These habitats include seagrasses or submerged aquatic vegetation that are found in the intertidal and subtidal zones of estuaries and nearshore coastal waters. Some deepwater reef communities (coral or tubercid worm reefs) have also been excluded from the inventory. These habitats, because of their depth, go undetected by aerial imagery.

DATA PRECAUTIONS

Federal, state, and local regulatory agencies with jurisdiction over wetlands may define and describe wetlands in a different manner than that used in this inventory. There is no attempt, in either the design or products of this inventory, to define the limits of proprietary jurisdiction of any Federal, state, or local government or to establish the geographical scope of the regulatory programs of government agencies. Persons intending to engage in activities involving modifications within or adjacent to wetland areas should seek the advice of appropriate federal, state, or local agencies concerning specified agency regulatory programs and proprietary jurisdictions that may affect such activities.

Freshwater Emergent Wetland

PEMKCx	21.0 acres
PEMKCh	12.2 acres

Freshwater Forested/shrub Wetland

PFOA	14.8 acres
PFOC	13.3 acres

Freshwater Pond

PUBKHx	2.01 acres
PUBFx	0.968 acre

Lake

L1UBKH

40.1 acres

L2USKCh

31.7 acres

Other

PUSC_x

0.965 acre

Riverine

R2UBH

1070.0 acres

Banta Carbona Irrigation District

IPaC Trust Resource Report

Generated October 14, 2015 08:36 AM MDT

This report is for informational purposes only and should not be used for planning or analyzing project-level impacts. For projects that require FWS review, please return to this project on the IPaC website and request an official species list from the Regulatory Documents page.



US Fish & Wildlife Service

IPaC Trust Resource Report



Project Description

NAME

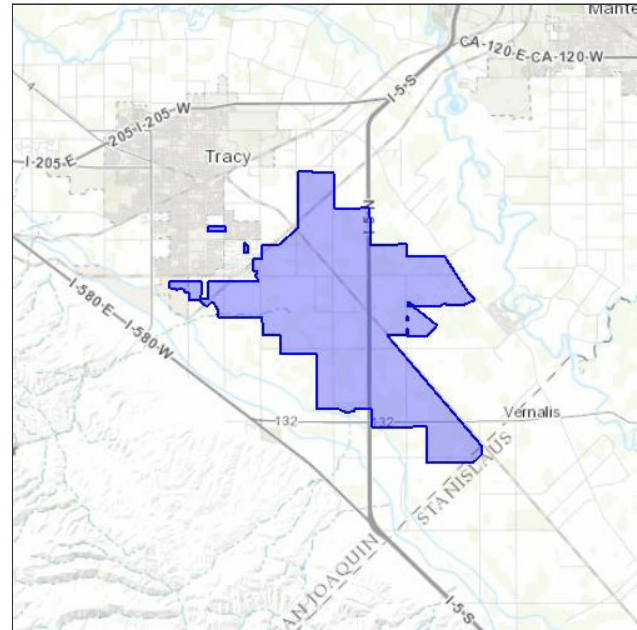
Banta Carbona Irrigation District

PROJECT CODE

ZQLWV-57JXZ-E4JEG-TZE5H-46TXFY

LOCATIONSan Joaquin and Stanislaus counties,
California**DESCRIPTION**

No description provided



U.S. Fish & Wildlife Contact Information

Species in this report are managed by:

San Francisco Bay-delta Fish And Wildlife

650 Capitol Mall

SUITE 8-300

Sacramento, CA 95814

(916) 930-5603

Sacramento Fish And Wildlife Office

Federal Building

2800 COTTAGE WAY, ROOM W-2605

Sacramento, CA 95825-1846

(916) 414-6600

Endangered Species

Proposed, candidate, threatened, and endangered species that are managed by the [Endangered Species Program](#) and should be considered as part of an effect analysis for this project.

This unofficial species list is for informational purposes only and does not fulfill the requirements under [Section 7](#) of the Endangered Species Act, which states that Federal agencies are required to "request of the Secretary of Interior information whether any species which is listed or proposed to be listed may be present in the area of a proposed action." This requirement applies to projects which are conducted, permitted or licensed by any Federal agency.

A letter from the local office and a species list which fulfills this requirement can be obtained by returning to this project on the IPaC website and requesting an official species list on the Regulatory Documents page.

Amphibians

California Red-legged Frog *Rana draytonii*

Threatened

MANAGED BY

Sacramento Fish And Wildlife Office

CRITICAL HABITAT

There is **final** critical habitat designated for this species.

<https://ecos.fws.gov/speciesProfile/profile/speciesProfile.action?sPCODE=D02D>

California Tiger Salamander *Ambystoma californiense*

Threatened

MANAGED BY

Sacramento Fish And Wildlife Office

CRITICAL HABITAT

There is **final** critical habitat designated for this species.

<https://ecos.fws.gov/speciesProfile/profile/speciesProfile.action?sPCODE=D01T>

Birds

Yellow-billed Cuckoo *Coccyzus americanus*

Threatened

MANAGED BY

Sacramento Fish And Wildlife Office

CRITICAL HABITAT

There is **proposed** critical habitat designated for this species.

<https://ecos.fws.gov/speciesProfile/profile/speciesProfile.action?sPCODE=B06R>

Crustaceans

Vernal Pool Fairy Shrimp *Branchinecta lynchi*

Threatened

MANAGED BY

Sacramento Fish And Wildlife Office

CRITICAL HABITAT

There is **final** critical habitat designated for this species.<https://ecos.fws.gov/speciesProfile/profile/speciesProfile.action?spcode=K03G>

Vernal Pool Tadpole Shrimp *Lepidurus packardii*

Endangered

MANAGED BY

Sacramento Fish And Wildlife Office

CRITICAL HABITAT

There is **final** critical habitat designated for this species.<https://ecos.fws.gov/speciesProfile/profile/speciesProfile.action?spcode=K048>

Fishes

Delta Smelt *Hypomesus transpacificus*

Threatened

MANAGED BY

Sacramento Fish And Wildlife Office

CRITICAL HABITAT

There is **final** critical habitat designated for this species.<https://ecos.fws.gov/speciesProfile/profile/speciesProfile.action?spcode=E070>

Steelhead *Oncorhynchus (=Salmo) mykiss*

Threatened

MANAGED BY

Sacramento Fish And Wildlife Office

CRITICAL HABITAT

There is **final** critical habitat designated for this species.<https://ecos.fws.gov/speciesProfile/profile/speciesProfile.action?spcode=E08D>

Flowering Plants

Large-flowered Fiddleneck *Amsinckia grandiflora*

Endangered

MANAGED BY

Sacramento Fish And Wildlife Office

CRITICAL HABITAT

There is **final** critical habitat designated for this species.<https://ecos.fws.gov/speciesProfile/profile/speciesProfile.action?spcode=Q1SU>

Insects

San Bruno Elfin Butterfly *Callophrys mossii bayensis*

Endangered

MANAGED BY

Sacramento Fish And Wildlife Office

CRITICAL HABITAT

No critical habitat has been designated for this species.

<https://ecos.fws.gov/speciesProfile/profile/speciesProfile.action?spcode=I00Q>

Valley Elderberry Longhorn Beetle *Desmocerus californicus dimorphus*

Threatened

MANAGED BY

Sacramento Fish And Wildlife Office

CRITICAL HABITAT

There is **final** critical habitat designated for this species.

<https://ecos.fws.gov/speciesProfile/profile/speciesProfile.action?spcode=I01L>

Mammals

Riparian Brush Rabbit *Sylvilagus bachmani riparius*

Endangered

MANAGED BY

Sacramento Fish And Wildlife Office

CRITICAL HABITAT

No critical habitat has been designated for this species.

<https://ecos.fws.gov/speciesProfile/profile/speciesProfile.action?spcode=A0DN>

Riparian Woodrat (=san Joaquin Valley) *Neotoma fuscipes riparia*

Endangered

MANAGED BY

Sacramento Fish And Wildlife Office

CRITICAL HABITAT

No critical habitat has been designated for this species.

<https://ecos.fws.gov/speciesProfile/profile/speciesProfile.action?spcode=A0FC>

San Joaquin Kit Fox *Vulpes macrotis mutica*

Endangered

MANAGED BY

Sacramento Fish And Wildlife Office

CRITICAL HABITAT

No critical habitat has been designated for this species.

<https://ecos.fws.gov/speciesProfile/profile/speciesProfile.action?spcode=A006>

Reptiles

Giant Garter Snake *Thamnophis gigas*

Threatened

MANAGED BY

Sacramento Fish And Wildlife Office

CRITICAL HABITAT

No critical habitat has been designated for this species.

<https://ecos.fws.gov/speciesProfile/profile/speciesProfile.action?spcode=C057>

Critical Habitats

Potential effects to critical habitat(s) within the project area must be analyzed along with the endangered species themselves.

Delta Smelt Critical Habitat Final designated

<https://ecos.fws.gov/speciesProfile/profile/speciesProfile.action?scode=E070#crithab>

Migratory Birds

Birds are protected by the [Migratory Bird Treaty Act](#) and the Bald and Golden Eagle Protection Act.

Any activity which results in the take of migratory birds or eagles is prohibited unless authorized by the U.S. Fish and Wildlife Service ([1](#)). There are no provisions for allowing the take of migratory birds that are unintentionally killed or injured.

You are responsible for complying with the appropriate regulations for the protection of birds as part of this project. This involves analyzing potential impacts and implementing appropriate conservation measures for all project activities.

<p>Bald Eagle <i>Haliaeetus leucocephalus</i> Year-round https://ecos.fws.gov/speciesProfile/profile/speciesProfile.action?spcode=B008</p>	Bird of conservation concern
<p>Black Rail <i>Laterallus jamaicensis</i> Season: Breeding https://ecos.fws.gov/speciesProfile/profile/speciesProfile.action?spcode=B09A</p>	Bird of conservation concern
<p>Burrowing Owl <i>Athene cunicularia</i> Year-round</p>	Bird of conservation concern
<p>California Spotted Owl <i>Strix occidentalis occidentalis</i> Year-round https://ecos.fws.gov/speciesProfile/profile/speciesProfile.action?spcode=B08L</p>	Bird of conservation concern
<p>Costa's Hummingbird <i>Calypte costae</i> Season: Breeding</p>	Bird of conservation concern
<p>Fox Sparrow <i>Passerella iliaca</i> Season: Wintering</p>	Bird of conservation concern
<p>Lawrence's Goldfinch <i>Carduelis lawrencei</i> Season: Breeding https://ecos.fws.gov/speciesProfile/profile/speciesProfile.action?spcode=B0J8</p>	Bird of conservation concern
<p>Least Bittern <i>Ixobrychus exilis</i> Season: Breeding</p>	Bird of conservation concern
<p>Lesser Yellowlegs <i>Tringa flavipes</i> Season: Wintering</p>	Bird of conservation concern
<p>Lewis's Woodpecker <i>Melanerpes lewis</i> Season: Wintering</p>	Bird of conservation concern
<p>Loggerhead Shrike <i>Lanius ludovicianus</i> Year-round https://ecos.fws.gov/speciesProfile/profile/speciesProfile.action?spcode=B0FY</p>	Bird of conservation concern
<p>Long-billed Curlew <i>Numenius americanus</i> Season: Wintering https://ecos.fws.gov/speciesProfile/profile/speciesProfile.action?spcode=B06S</p>	Bird of conservation concern
<p>Marbled Godwit <i>Limosa fedoa</i> Season: Wintering https://ecos.fws.gov/speciesProfile/profile/speciesProfile.action?spcode=B0JL</p>	Bird of conservation concern

Mountain Plover <i>Charadrius montanus</i> Season: Wintering https://ecos.fws.gov/speciesProfile/profile/speciesProfile.action?spcode=B078	Bird of conservation concern
Nuttall's Woodpecker <i>Picoides nuttallii</i> Year-round	Bird of conservation concern
Oak Titmouse <i>Baeolophus inornatus</i> Year-round	Bird of conservation concern
Peregrine Falcon <i>Falco peregrinus</i> Year-round https://ecos.fws.gov/speciesProfile/profile/speciesProfile.action?spcode=B0FU	Bird of conservation concern
Short-billed Dowitcher <i>Limnodromus griseus</i> Season: Wintering	Bird of conservation concern
Short-eared Owl <i>Asio flammeus</i> Season: Wintering https://ecos.fws.gov/speciesProfile/profile/speciesProfile.action?spcode=B0HD	Bird of conservation concern
Swainson's Hawk <i>Buteo swainsoni</i> Seasons: Wintering, Breeding https://ecos.fws.gov/speciesProfile/profile/speciesProfile.action?spcode=B070	Bird of conservation concern
Tricolored Blackbird <i>Agelaius tricolor</i> Year-round https://ecos.fws.gov/speciesProfile/profile/speciesProfile.action?spcode=B06P	Bird of conservation concern
Yellow-billed Magpie <i>Pica nuttalli</i> Year-round https://ecos.fws.gov/speciesProfile/profile/speciesProfile.action?spcode=B0N8	Bird of conservation concern

Refuges

Any activity proposed on [National Wildlife Refuge](#) lands must undergo a 'Compatibility Determination' conducted by the Refuge. If your project overlaps or otherwise impacts a Refuge, please contact that Refuge to discuss the authorization process.

There are no refuges within this project area

Wetlands

Impacts to [NWI wetlands](#) and other aquatic habitats from your project may be subject to regulation under Section 404 of the Clean Water Act, or other State/Federal Statutes.

Project proponents should discuss the relationship of these requirements to their project with the Regulatory Program of the appropriate [U.S. Army Corps of Engineers District](#).

DATA LIMITATIONS

The Service's objective of mapping wetlands and deepwater habitats is to produce reconnaissance level information on the location, type and size of these resources. The maps are prepared from the analysis of high altitude imagery. Wetlands are identified based on vegetation, visible hydrology and geography. A margin of error is inherent in the use of imagery; thus, detailed on-the-ground inspection of any particular site may result in revision of the wetland boundaries or classification established through image analysis.

The accuracy of image interpretation depends on the quality of the imagery, the experience of the image analysts, the amount and quality of the collateral data and the amount of ground truth verification work conducted. Metadata should be consulted to determine the date of the source imagery used and any mapping problems.

Wetlands or other mapped features may have changed since the date of the imagery or field work. There may be occasional differences in polygon boundaries or classifications between the information depicted on the map and the actual conditions on site.

DATA EXCLUSIONS

Certain wetland habitats are excluded from the National mapping program because of the limitations of aerial imagery as the primary data source used to detect wetlands. These habitats include seagrasses or submerged aquatic vegetation that are found in the intertidal and subtidal zones of estuaries and nearshore coastal waters. Some deepwater reef communities (coral or tubercid worm reefs) have also been excluded from the inventory. These habitats, because of their depth, go undetected by aerial imagery.

DATA PRECAUTIONS

Federal, state, and local regulatory agencies with jurisdiction over wetlands may define and describe wetlands in a different manner than that used in this inventory. There is no attempt, in either the design or products of this inventory, to define the limits of proprietary jurisdiction of any Federal, state, or local government or to establish the geographical scope of the regulatory programs of government agencies. Persons intending to engage in activities involving modifications within or adjacent to wetland areas should seek the advice of appropriate federal, state, or local agencies concerning specified agency regulatory programs and proprietary jurisdictions that may affect such activities.

Freshwater Emergent Wetland

PEMFx	13.4 acres
PEMCh	3.02 acres
PEMAx	0.781 acre
PEMCx	0.585 acre

Freshwater Forested/shrub Wetland

PFOCh	4.96 acres
PFO/EMCh	3.45 acres

Freshwater Pond

PUBFx	21.8 acres
PUBHx	1.1 acres

PABFx

0.276 acre

Other

PUSC_x

4.9 acres

PUSCh

1.53 acres

