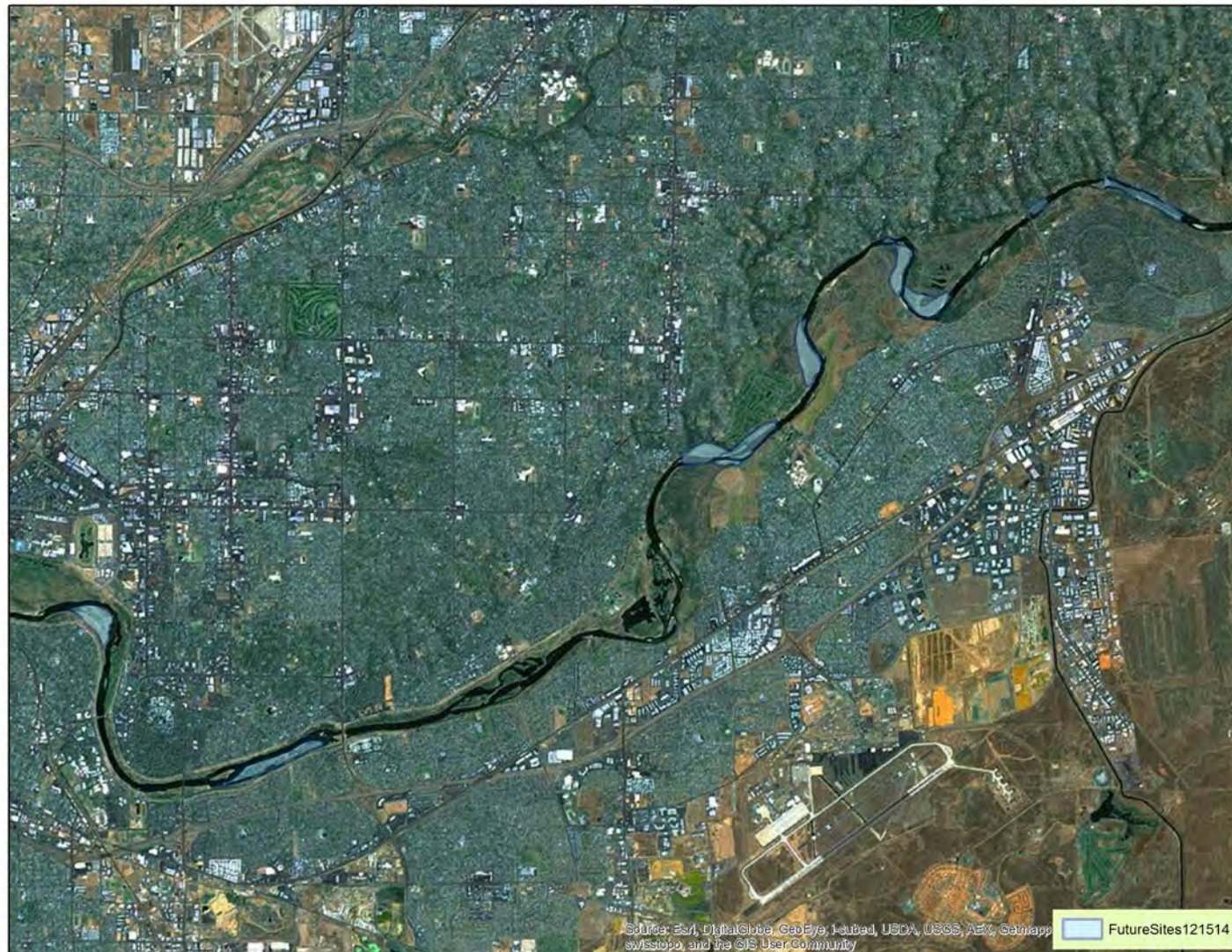


## **Appendix A Site Figures**

## Overview





## Lower Sailor Bar (RM 21.5)



## Site 1 – Lower Sailor Bar (RM 21.5)

Jan 5, 2015; 940 cfs



Looking downstream along river's edge



Example of vegetation on interior portion of Site 1



## Sunrise (RM 20.4)





## Site 2 – Sunrise (RM 20.4)

March 2015 (photos 1-3); Jan 5, 2015; 940 cfs (photo 4)



Looking downstream towards Sunrise Blvd



Looking downstream



Looking upstream on river left in a juvenile stranding area



Looking upstream towards Fair Oaks bridge from likely entrance of side channel

## Sacramento Bar (RM 18.6)





## **Site 3 – Sacramento Bar (RM 18.6)**

March 2015



Sacramento Bar, looking downstream



Sacramento Bar, looking upstream



## El Manto (RM 17.9)





**Site 4 – El Manto (RM 17.9): Jan 8, 2015, 940 cfs.**



Looking northeast across upstream end of Site 4 towards river



Looking southwest across Site 4



## Ancil Hoffman (RM 15.8)



## Site 5 – Ancil Hoffman (RM 15.8)

Jan 8, 2015, 940 cfs



Site 5 on right, looking downstream



Site 5 on left, looking upstream



## Upper River Bend (RM 14.5)





## Site 6 – River Bend (RM 14.5)

Ground photos: Jan 8, 2015, 940 cfs



Site 6 on left, looking upstream



Site 6 on right, looking downstream

Aerial Photos: March 2015



Looking upstream at existing side channel



Looking upstream from bottom of study site



Looking downstream at bottom of study site



Looking upstream towards top of study site



## Howe to Watt (RM 8.5)





## Site 7 – Howe to Watt (RM 8.5): March 2015



Eastern end of study site on left, looking downstream



Middle of study site on left, looking downstream



Western end of study site on left, looking downstream



## Paradise Beach (RM 5)





## Site 8 – Paradise Beach (RM 5): March 2015



Aerial Overview of Site 8, looking south across river towards site



Looking downstream across bar



Eastern end, looking downstream



Western end, looking downstream



Western end, looking upstream