

Appendix A

Groundwater Existing Conditions

This page left blank intentionally.

Appendix A

Groundwater Existing Conditions

This appendix includes the following figures:

1. Spring 2004 to Spring 2014 change in groundwater elevation in shallow (<200 feet bgs), intermediate (200-600 feet bgs), and deep (>600 feet bgs) wells. These figures were retrieved from DWR's Groundwater Information Center
(http://www.water.ca.gov/groundwater/maps_and_reports/northern_region/GroundwaterLevel/gw_level_monitoring.cfm)
2. Spring 2010 to Spring 2011 change in groundwater elevation in shallow (<200 feet bgs), intermediate (200-600 feet bgs), and deep (>600 feet bgs) wells. These figures were retrieved from DWR's Groundwater Information Center
(http://www.water.ca.gov/groundwater/maps_and_reports/northern_region/GroundwaterLevel/gw_level_monitoring.cfm)
3. Groundwater monitoring data for wells within the seller districts. Two sources (1) CASGEM and (2) DWR's Water Data Library were used to obtain the monitoring data. The process to query out the groundwater level data is explained below.

Direction to manually lookup groundwater level data from DWR's CASGEM website:

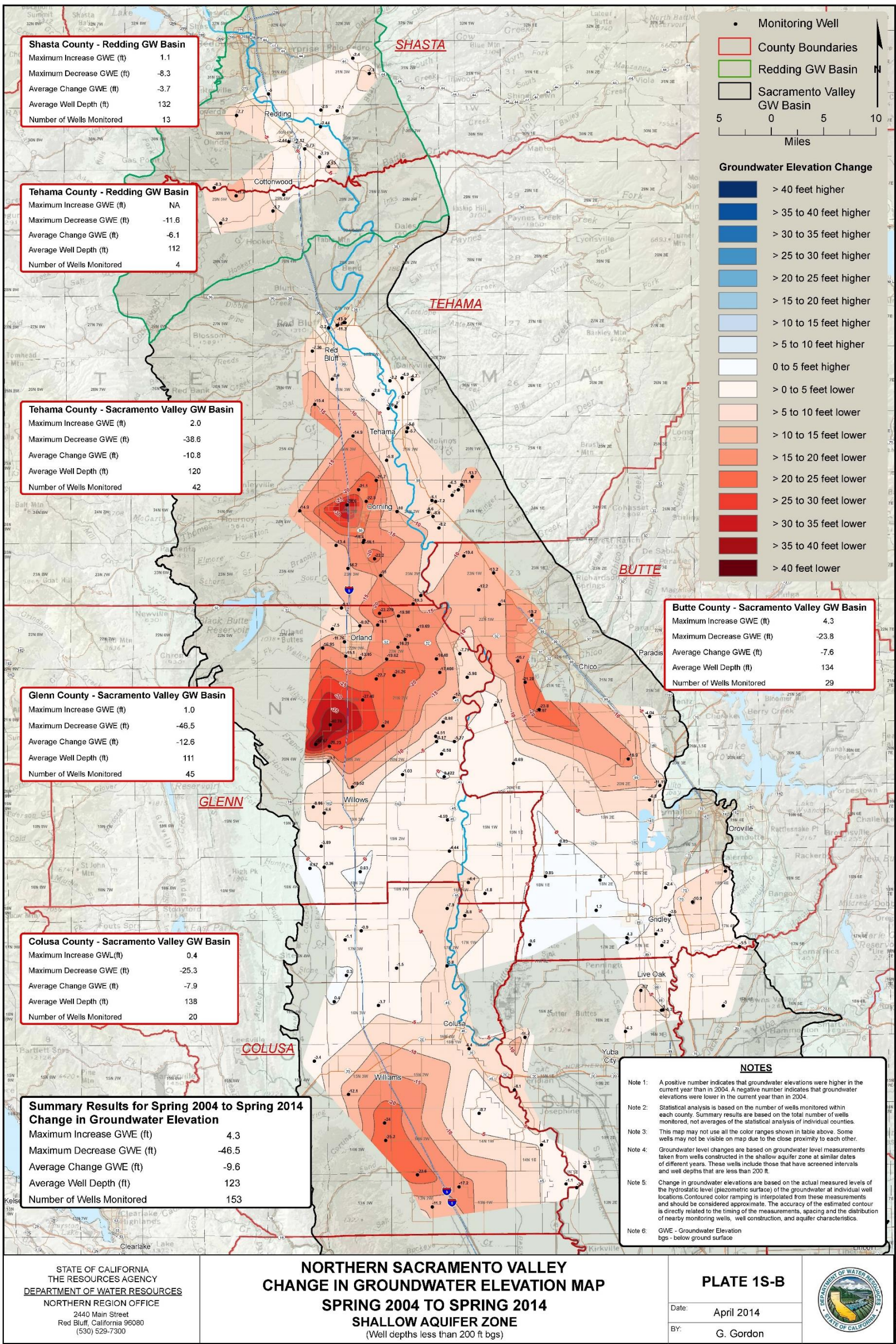
Example Well 29N04W15E002M

1. Go to CASGEM Public Login website:
http://www.water.ca.gov/groundwater/casgem/online_system.cfm (setup login if not previously done)
2. Select Well Information> State Well Number. Input well number (29N04W15E002M for this example)
3. Go to Well Details: View> View Hydrograph

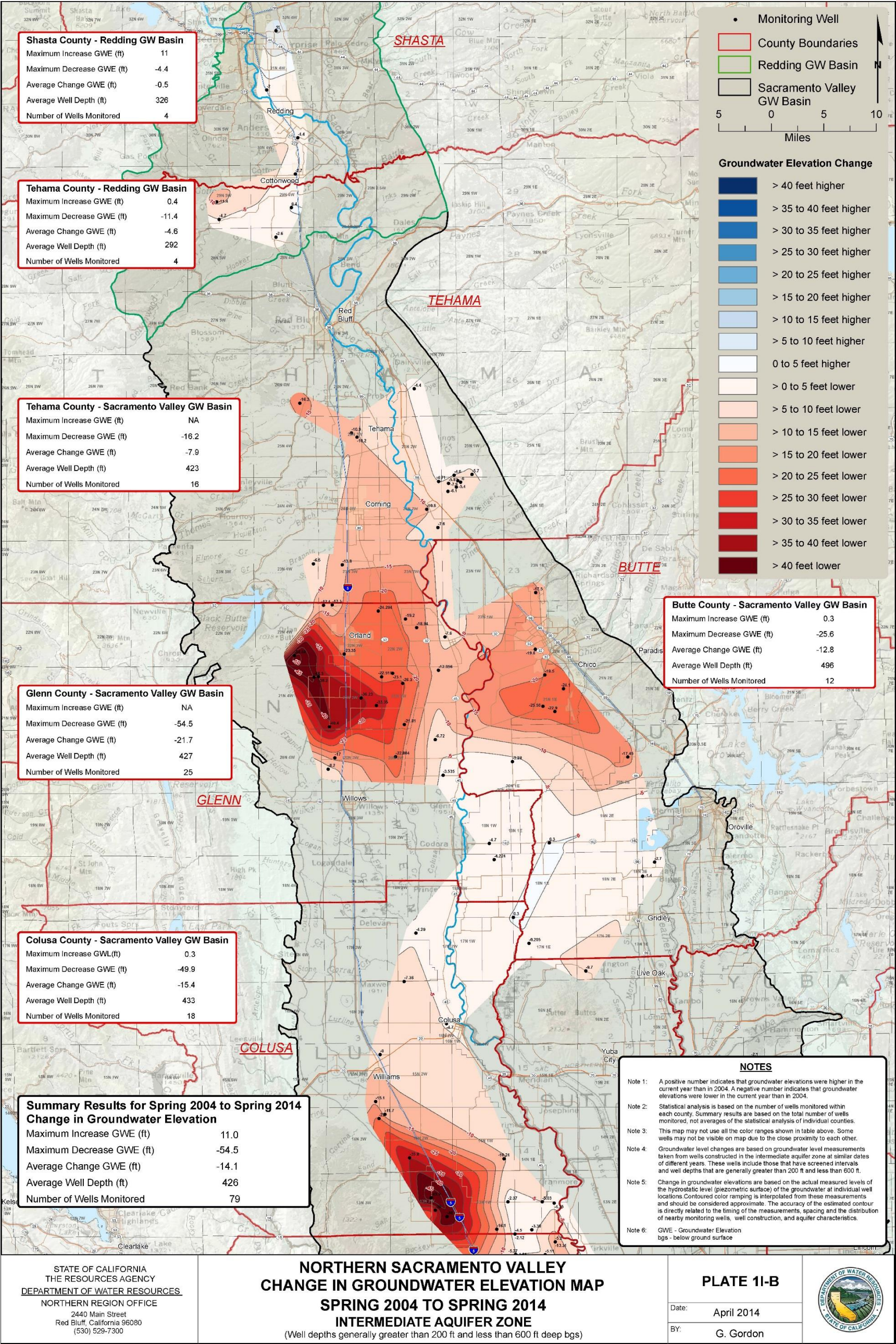
Direction to manually lookup groundwater level data from DWR's water data library:

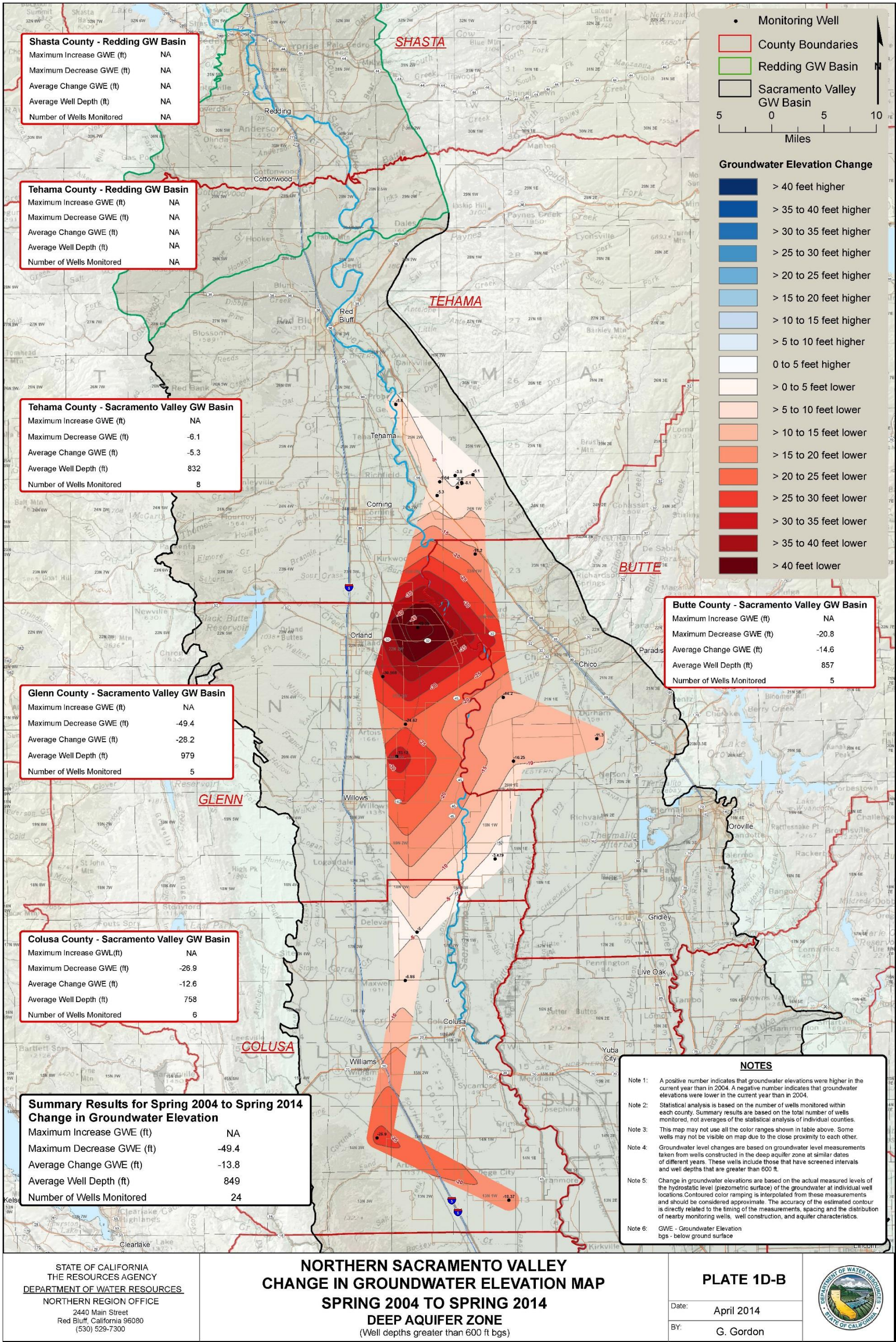
Example Well 29N04W15E002M

1. Go to DWR Water Data Library website:
<http://www.water.ca.gov/waterdatalibrary/>
2. Select Groundwater Level Data> Data by Township
3. Input Township, Range, Baseline and Sections information (For example well **29N04W15E002M** Township= 24 North; Range=04 West; Baseline= Mt. Diablo; and Sections= 15)

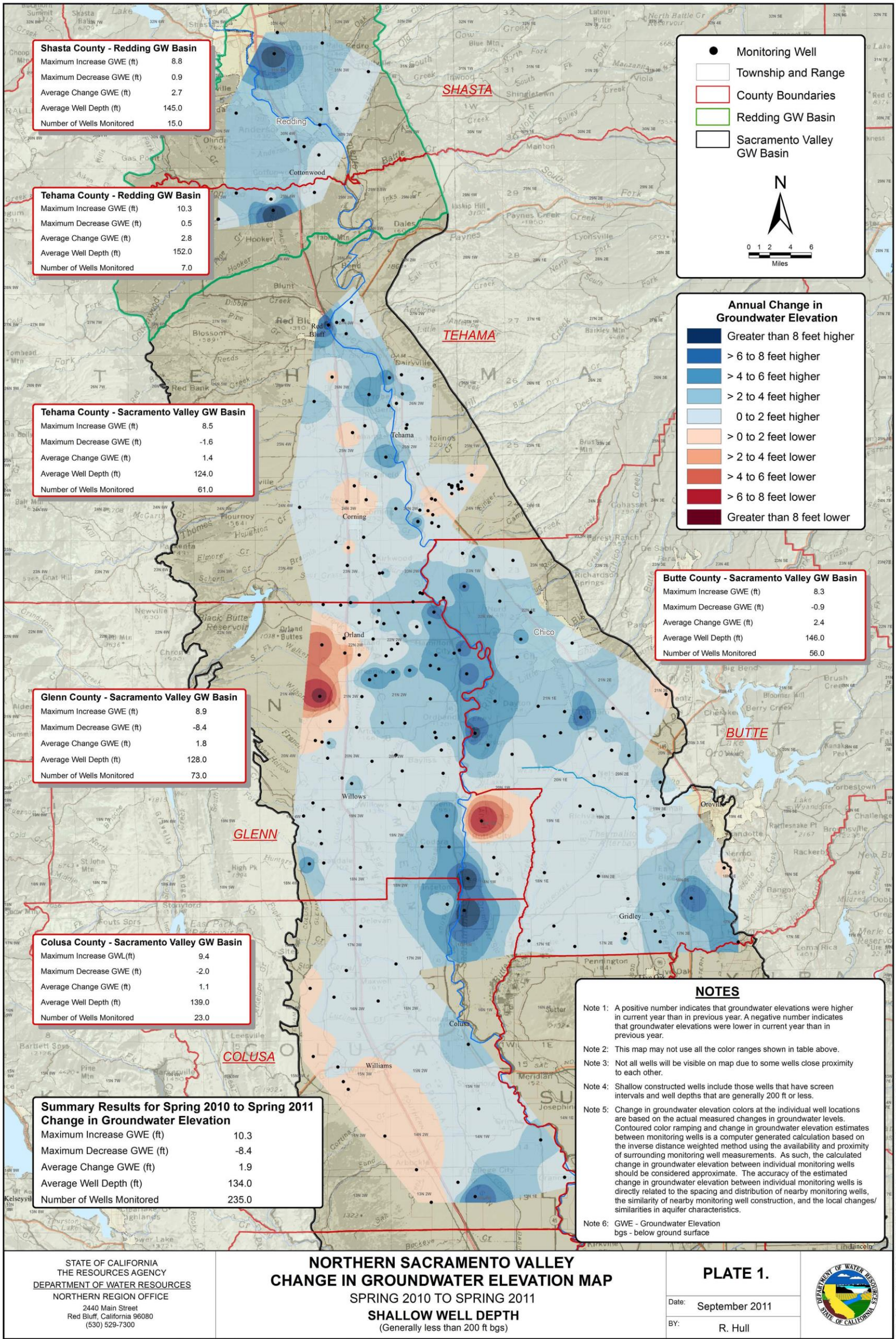


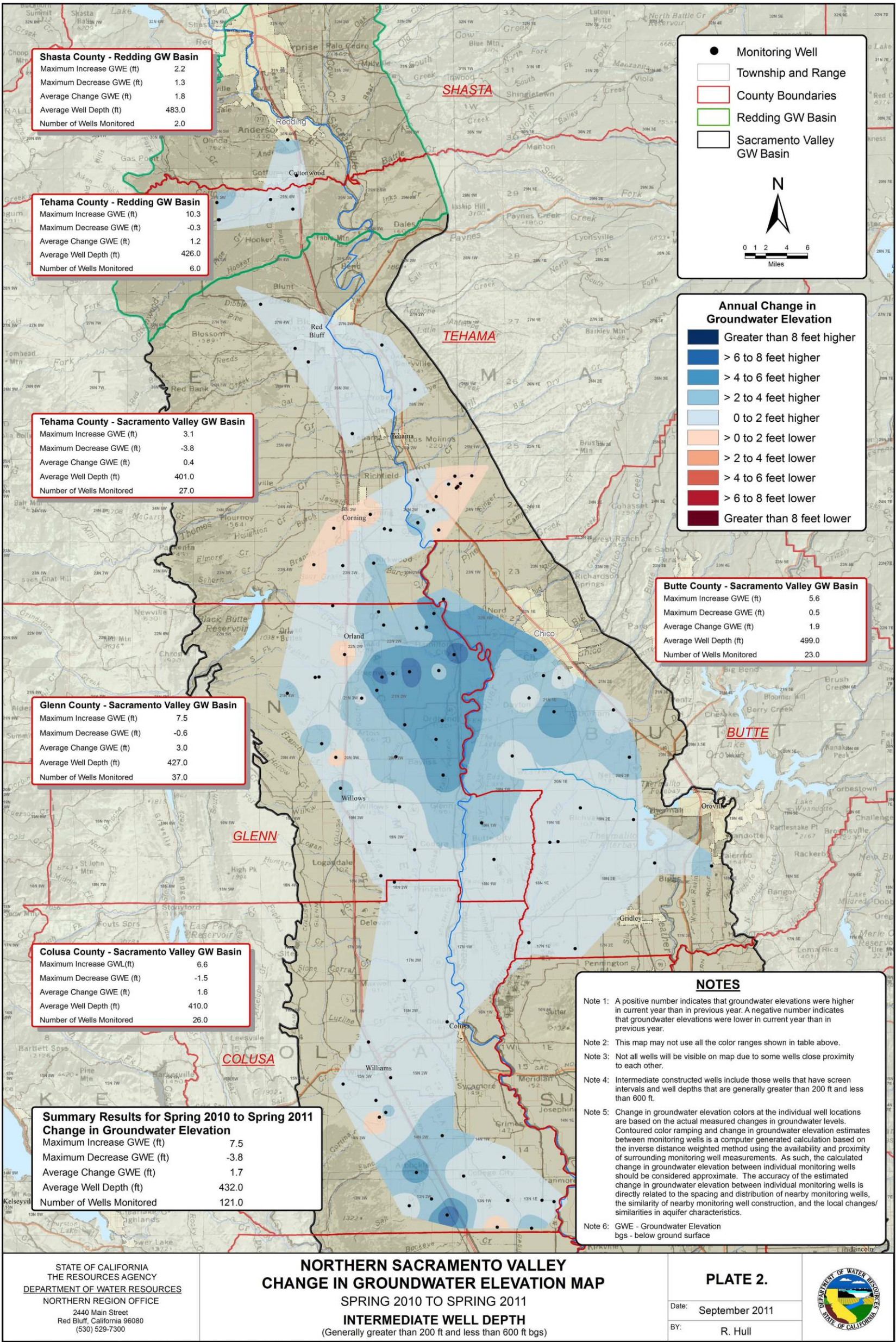
http://www.water.ca.gov/groundwater/data_and_monitoring/northern_region/GroundwaterLevel/gw_level_monitoring.cfm

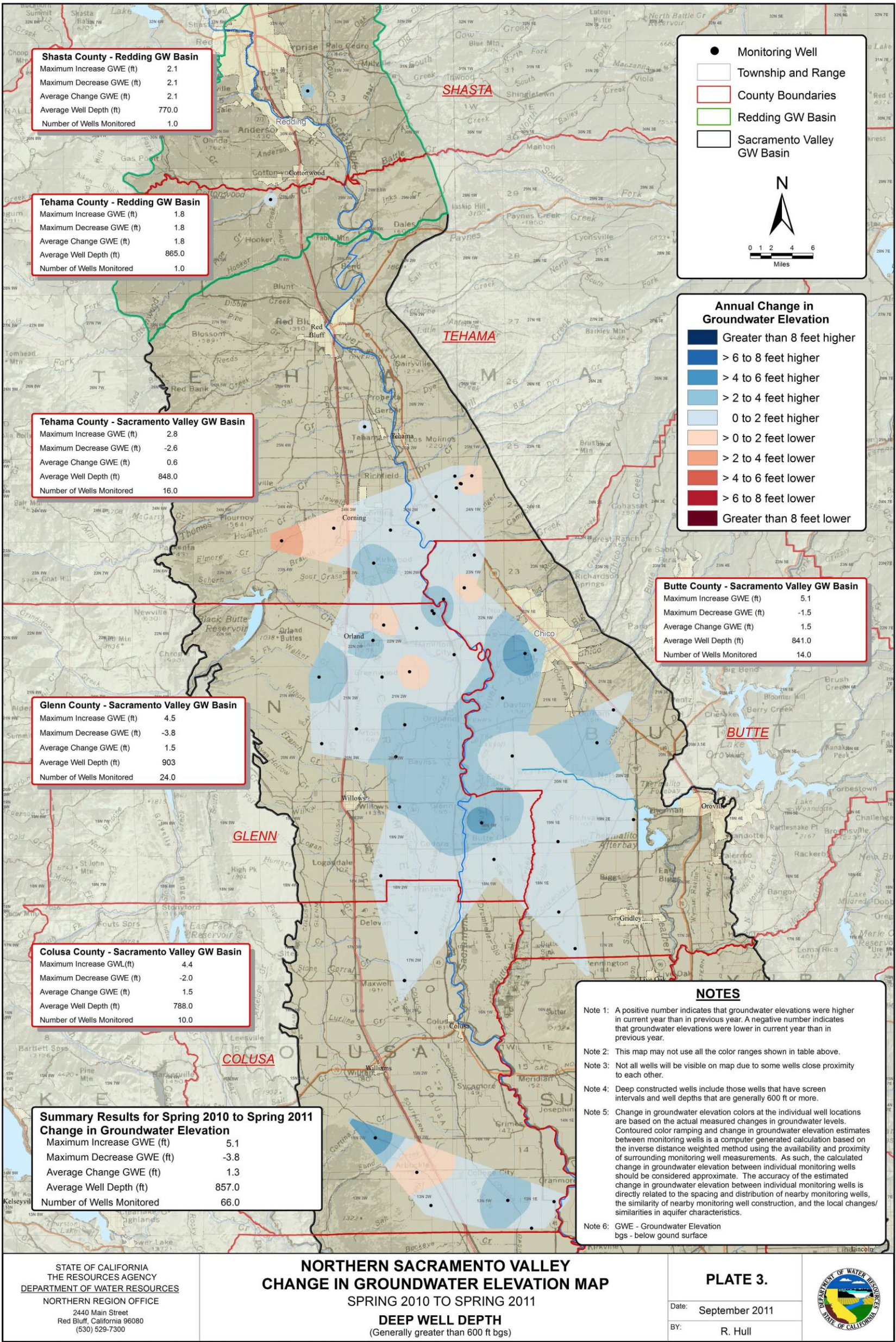




http://www.water.ca.gov/groundwater/data_and_monitoring/northern_region/GroundwaterLevel/gw_level_monitoring.cfm







This page left blank intentionally.