

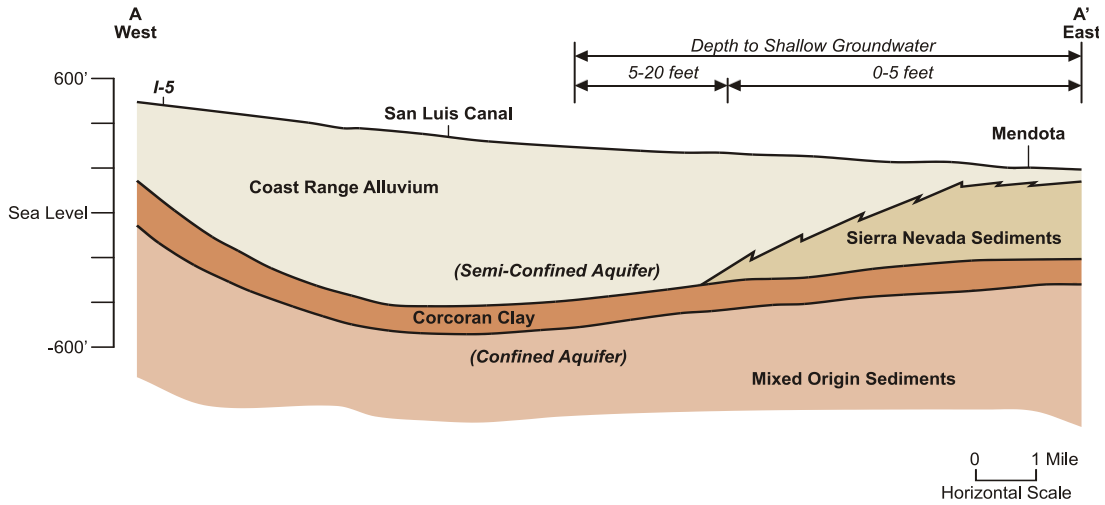
The aquifer system in the northern portion of the San Joaquin Valley Groundwater Basin is comprised of continental and marine deposits up to six miles thick, of which the upper 2,000 feet generally contain freshwater (Page 1986). A significant hydrogeologic feature in the basin is the Corcoran Clay. This clay layer divides the aquifer system into two distinct zones, an upper unconfined to semi-confined aquifer and a lower confined aquifer. Both aquifers are composed of formations derived from the deposition of Sierra Nevada sediment in the eastern portions of the basin, and from deposition of Coast Range sediments in the western portions of the basin. Overlying these formations are flood-plain deposits. The formations in the eastern portions of the basin are derived from the granitic Sierra Nevada and are generally more permeable than the sediments derived from the western marine formations. Sediments derived from marine rocks generally contain more silt and clay and also contain higher concentrations of salts. The lower confined aquifer system contains sediments of mixed origin.

Historically, these aquifers were two separate systems; however, wells in the western side of the basin have penetrated both aquifers and are commonly perforated directly above and below the Corcoran Clay. This has allowed “almost free flow [of groundwater] through the well casings and gravel packs” (Williamson 1989) and has resulted in groundwater interaction between the upper and lower aquifer in some localized areas (Reclamation 1990).

In the southern portion of the basin, the central axis of the basin contains Tulare Lake sediments. These Tulare Lake sediments are estimated to be more than 3,600 feet thick, with a lateral extent of more than 1,000 square miles (Page 1986).

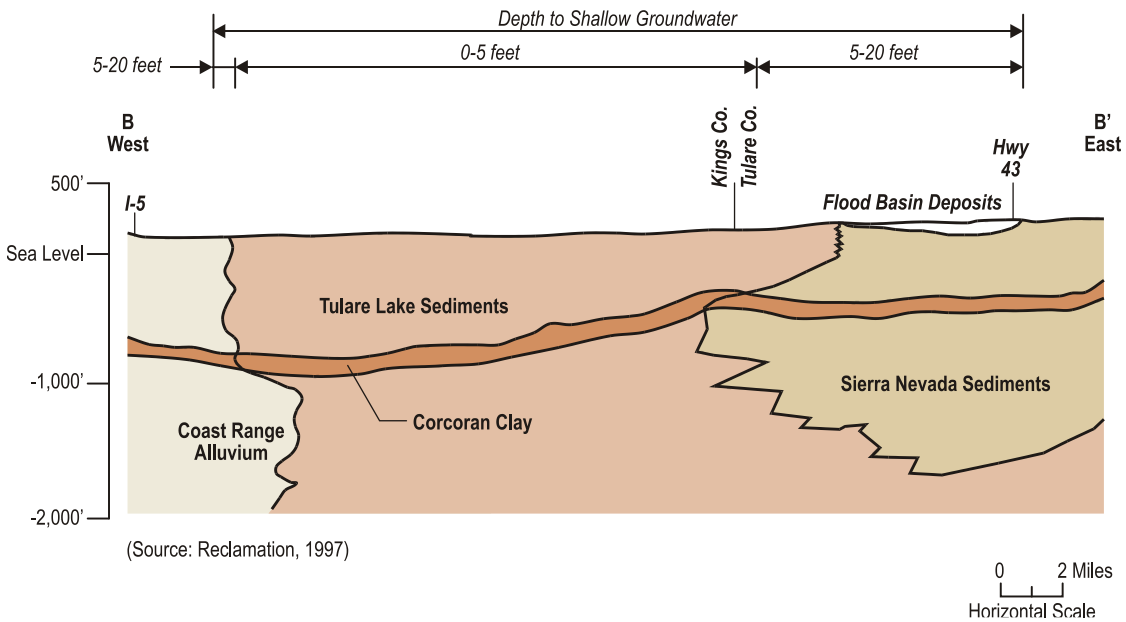
Figure 3.3-13 shows a generalized geologic cross section of the northern portion of the San Joaquin Valley Groundwater Basin and Figure 3.3-14 shows a generalized geologic cross section for the southern portion of the basin. Figure 3.3-15 shows the location of these cross sections.

The Corcoran Clay, the most extensive of several clay layers, was formed by the periodic filling and draining of ancient lakes in the San Joaquin Valley. Six laterally extensive clays, designated Clays A through F, have been mapped (Page 1986). The Modified E-Clay includes the Corcoran Clay, which is between 0 and 160 feet thick at depths between 100 and 400 feet bgs.



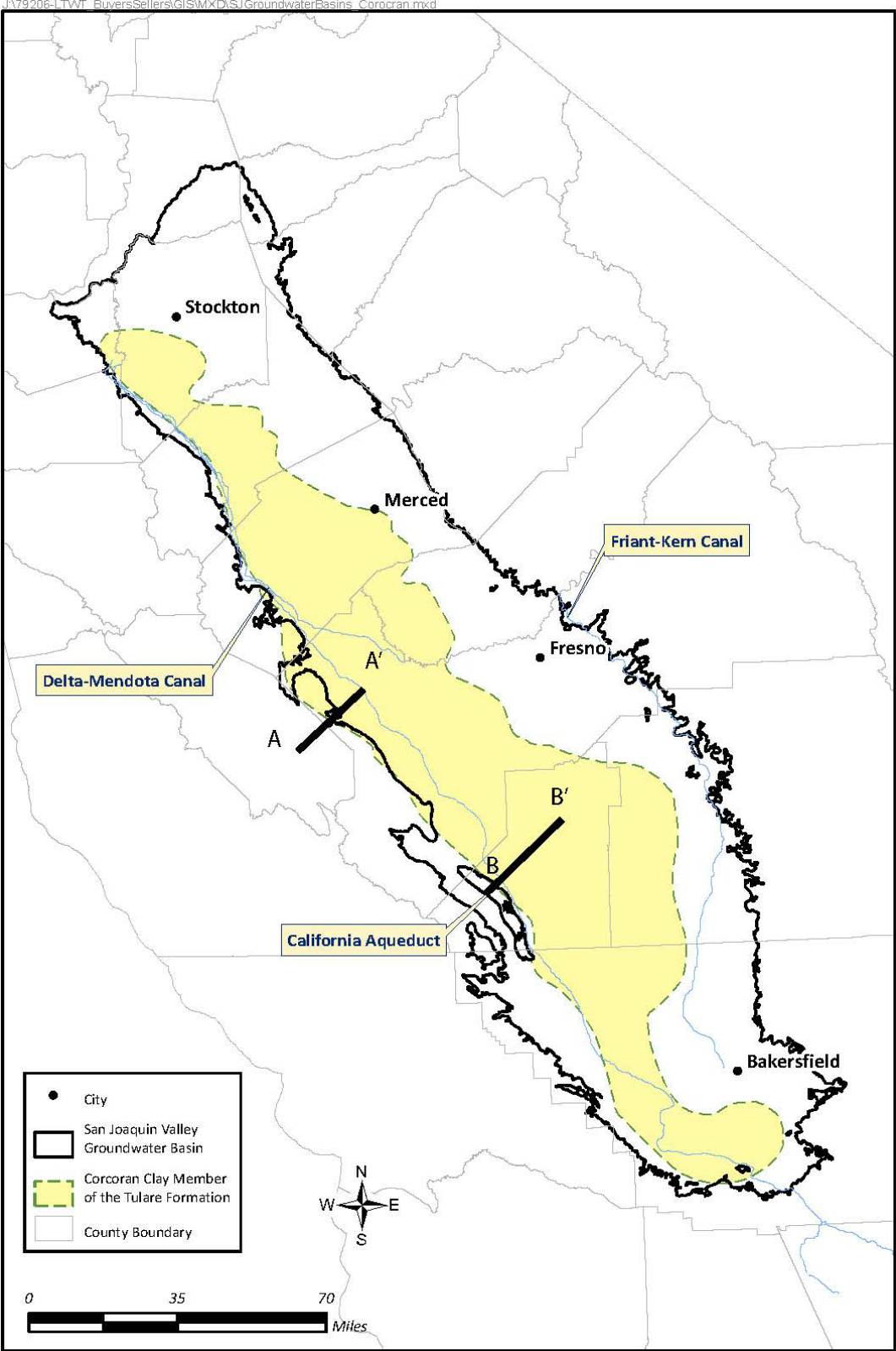
Source: Reclamation 1997

**Figure 3-3.13. Geologic Cross Section of the Northern Portion of the San Joaquin Valley Groundwater Basin**



(Source: Reclamation, 1997)

**Figure 3.3-14. Geologic Cross Section of the Southern Portion of the San Joaquin Valley Groundwater Basin**



**Figure 3.3-15. Lateral Extent of the Corcoran Clay in the San Joaquin Valley Groundwater Basin**

Historically, groundwater in the unconfined to semi-confined upper aquifer system was recharged by streambed infiltration, rainfall infiltration, and lateral inflow along the basin boundaries. Average annual precipitation in the area is significantly less than in the Sacramento Valley Groundwater Basin and ranges from five to 18 inches (Faunt 2009). The percolation of applied agricultural surface water supplements natural groundwater replenishment. The lower confined aquifer is recharged primarily from lateral inflow from the eastern portions of the basin, beyond the eastern extent of the Corcoran Clay. Precipitation in the Sierra Nevada to the east of the basin can be as high as 65 to 75 inches, although much of it is in the form of snow. Peak runoff in the basin generally lags precipitation by five to six months (Bertoldi 1991).

The main surface water feature in the northern portion of the San Joaquin Valley Groundwater Basin is the San Joaquin River, which has several major tributaries draining the Sierra Nevada, including the Fresno, Chowchilla, Merced, Tuolumne, and Stanislaus rivers. Historically, these streams were “gaining” streams (i.e., they had a net gain of water from groundwater discharge into the river). With the decline of groundwater levels in the basin, areas of substantial pumping have reversed the local groundwater flow, and reaches of streams now lose water to the aquifer system (losing streams). The main surface water features in the southern portion of the San Joaquin Valley Groundwater Basin (Tulare Lake Hydrologic Region) are the Kern, Kaweah, and Kings Rivers. Agricultural development and groundwater pumping in the area, with the resultant decline in groundwater levels, has caused the majority of the rivers and streams to lose water to the aquifer system (losing streams).

### **Groundwater Production, Levels, and Storage**

Prior to the large-scale development of irrigated agriculture, groundwater in the basin generally flowed from areas of higher elevation (i.e., the edges of the basin) toward the San Joaquin River and ultimately to the Delta. Most of the water in the San Joaquin Valley moved laterally, but a small amount leaked upward through the intervening confining unit (Planert and Williams 1995). Upward vertical flow to discharge areas from the deep confined part of the aquifer system was impeded partially by the confining clay beds, particularly the Corcoran Clay. Extensive groundwater pumping and irrigation (with imported surface water) have modified local groundwater flow patterns and in some areas, groundwater depressions are evident. Groundwater flow has become more rapid and complex. Groundwater pumping and percolation of excess irrigation water has resulted in steeper hydraulic gradients as well as shortened flow paths between sources and sinks (Faunt 2009).

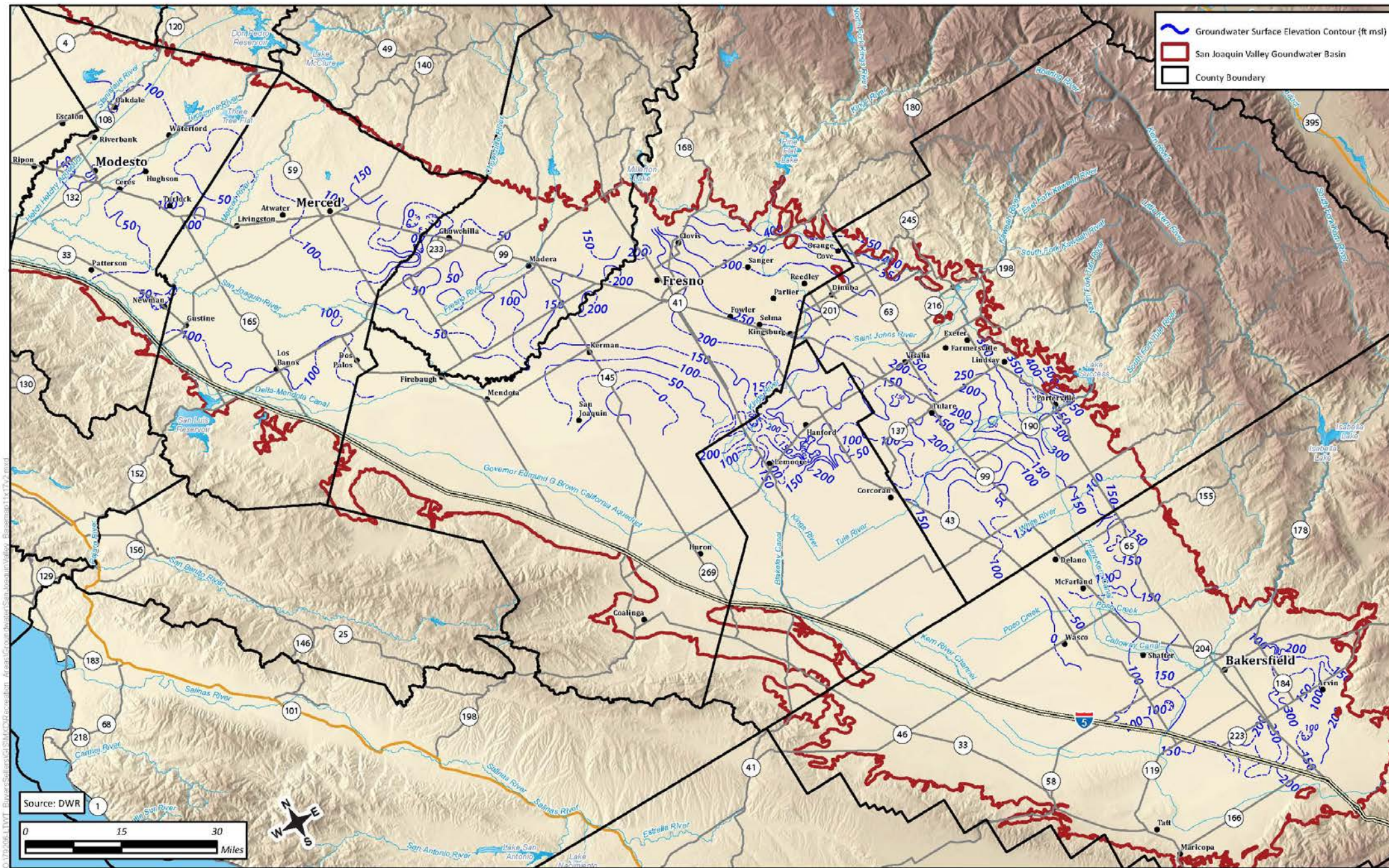
Irrigated agriculture in the northern portion of the San Joaquin Valley Groundwater Basin increased from about one million acres in the 1920s to more than 2.2 million acres by the early 1980s (Reclamation 1997). Two water balance subregions (12 and 13) in the USGS's Central Valley Hydrologic Model (CVHM), show average groundwater pumping to be 799,000 AF per year from 1962 through 2003 (Faunt 2009).

Figure 3.3-16 shows Spring 2010 groundwater elevation contours for the San Joaquin Valley Groundwater Basin. The cumulative change in groundwater storage for the entire San Joaquin Valley Groundwater Basin was relatively constant from 1962 through 2003 according to the CVHM (Figure 3.3-10). Similar to the Sacramento Valley Groundwater Basin, storage tends to drop during dry periods and increase during wetter years. Annual average groundwater production in the basin was estimated to be 0.9 million AF in the CVHM model (Faunt 2009).

#### **Groundwater-Related Land Subsidence**

From the 1920s until the mid-1960s, the use of groundwater for irrigation of crops in the San Joaquin Valley increased rapidly, causing land subsidence throughout the west and southern portions of the valley. From 1920 to 1970, almost 5,200 square miles of irrigated land in the San Joaquin River Watershed showed at least one foot and as much as 28 feet of land subsidence in northwest Fresno County (CALFED 2000). Land subsidence is concentrated in areas underlain by the Corcoran Clay. Figure 3.3-17 shows areas of subsidence in the San Joaquin Valley as of 2000.

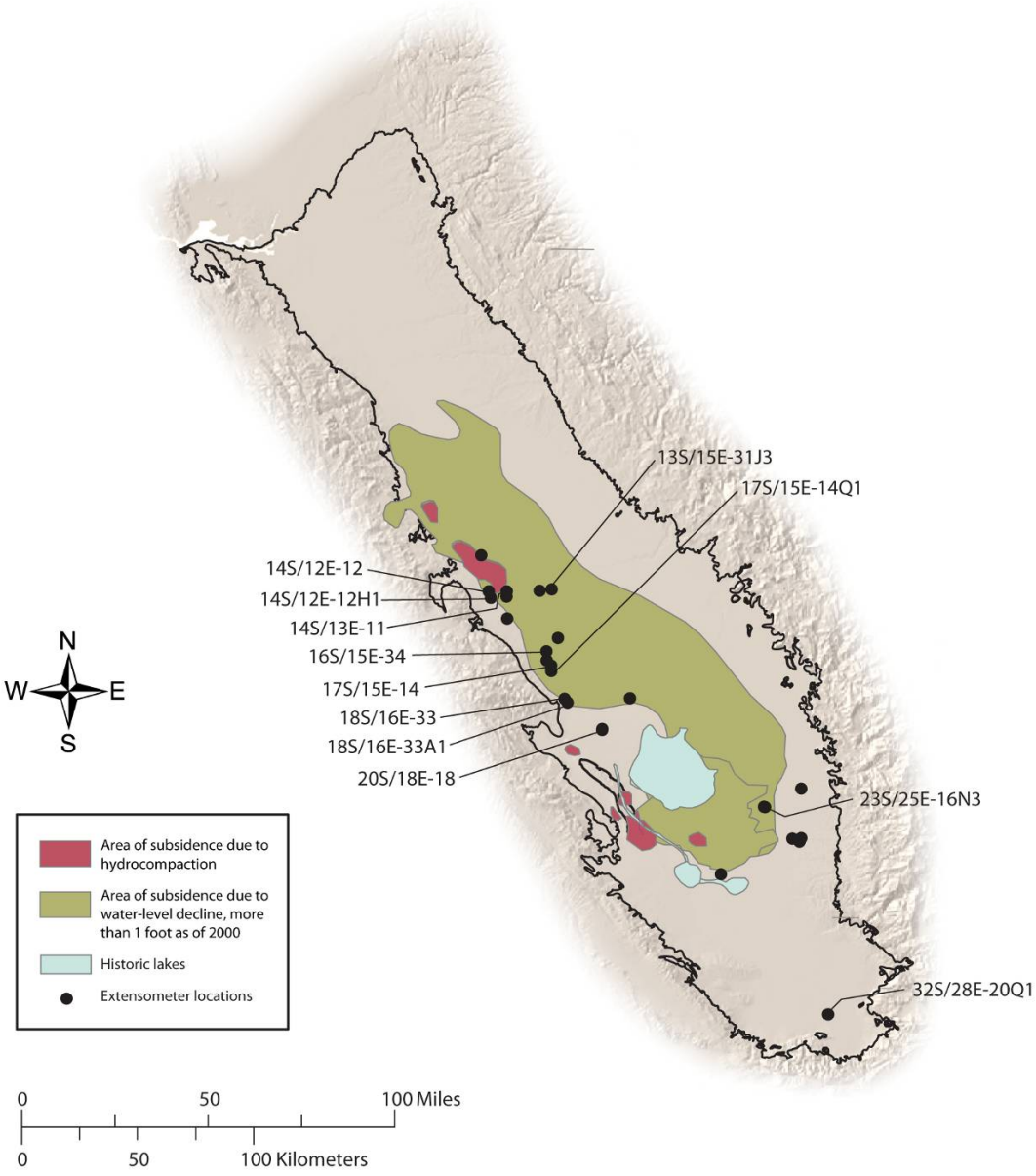
*This page intentionally left blank.*



Source: DWR 2011  
**Figure 3.3-16. San Joaquin Valley Spring 2010 Groundwater Elevation Contours**

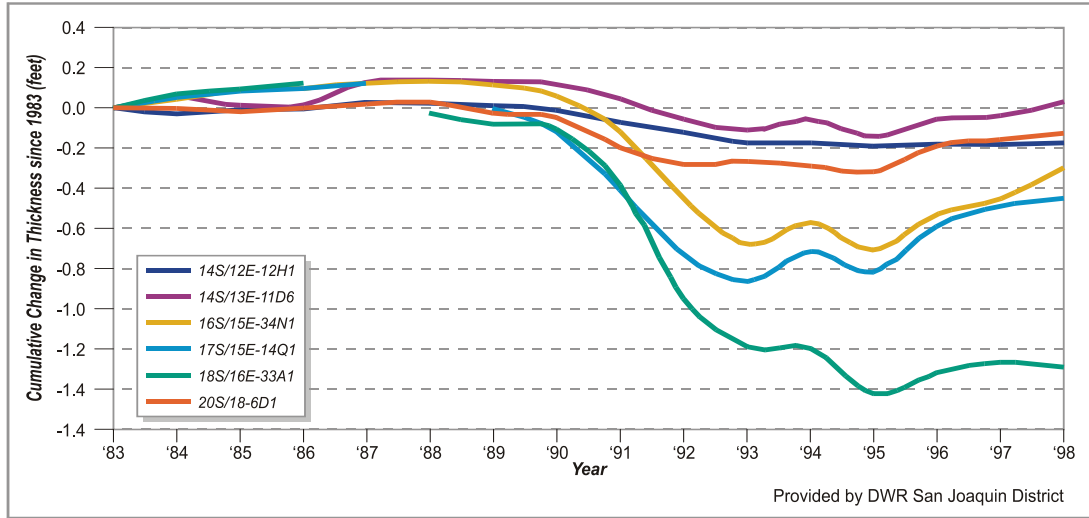
*This page intentionally left blank.*





Source: Faunt 2009

**Figure 3.3-17. Areas of Subsidence in the San Joaquin Valley, as of 2000**



**Figure 3.3-18. Measured Land Subsidence in the San Joaquin Valley, 1983 through 1998**

Land subsidence studies conducted during the 1950s and 1970s focused on the vicinity of the California Aqueduct. During this period, the State was considering construction of the California Aqueduct, and subsidence due to the large amount of groundwater extraction in the area was a major concern. Following construction, delivery of surface water conveyed by the aqueduct reduced the irrigators' need to extract groundwater, thus reducing the rate of subsidence. Interferometric Synthetic Aperture Radar (InSAR) analyses conducted over the San Joaquin Valley in 2013 indicates substantial subsidence at (1) approximately 7,000 square kilometers of area west of Tulare and east of Kettleman City; and (2) 3,100 square kilometers of area near El Nido (South of Merced and west of Madera). Land elevation benchmark surveys conducted by Caltrans along Highway 198 corroborate the InSAR analyses and indicate 9.37 feet of subsidence occurring in this area between 1960 and 2004.

Land subsidence measurements have shown that an increase in groundwater pumping during 1984-1996 resulted in land subsidence of up to two feet along the Delta-Mendota Canal (CALFED 2000). Similarly, increased pumping caused Westlands WD to experience up to two feet of subsidence between 1983 and 2001, with most of the subsidence occurring after 1989 (Westlands WD 2000). Six extensometers near the California Aqueduct measure subsidence, as shown in Figure 3.3-17. Figure 3.3-18 shows the extent of subsidence from 1983 to 1998. Data beyond 1998 was not available from DWR for these locations.

A 2013 USGS study found that the northern portion of the Delta-Mendota Canal was stable or experienced little subsidence from 2003-2010. The southern portion of the Delta-Mendota Canal subsided as part of a large area of subsidence centered near the town of El Nido. Subsidence measurements indicated more than 20 millimeters of subsidence from 2008 to 2010 (Sneed et al 2013). Land subsidence will continue if overdraft of the underlying aquifers continues.

### **Groundwater Quality**

Groundwater quality varies throughout the San Joaquin Valley Groundwater Basin. The GAMA Program's Priority Basin Project evaluates statewide groundwater quality and sampled 67 wells in the northern San Joaquin Valley region; 79 wells in the central region (includes Modesto, Turlock, Merced, and Uplands subbasins) and 126 wells in the southern region (Kings, Kaweah, Tule, and Tulare basins) between 2004 and 2006. Water quality data was analyzed for inorganic constituents (e.g., nutrients, radioactive constituents, TDS, and iron/manganese); special interest constituents (e.g., perchlorate) and organic constituents (e.g., solvents, gasoline additives, and pesticides).

#### *Inorganic Constituents:*

Arsenic, vanadium and boron were the trace elements that were most frequently detected at concentrations greater than the MCL within the basin. Aluminum, barium, lead, antimony, mercury, vanadium, and fluoride were also detected at concentrations above the MCL in less than two percent of the primary aquifers (Belitz 2010, Bennett 2010, Burton 2012).

Nutrients such as nitrate and nitrite are naturally present at low concentrations in groundwater. High and moderate concentrations generally occur as a result of human activities, such as applying fertilizer to crops. Livestock, when in concentrated numbers, and septic systems also produce nitrogenous waste that can leach into groundwater. Nitrate was present at concentrations greater than the MCL in two percent of the primary aquifers in the northern and central portion of the basin and six percent of the primary aquifers in the southern region of the basin (Belitz 2010, Bennett 2010, Burton 2012).

CDPH and USEPA's secondary drinking water standard for TDS is 500 mg/L, and the agricultural water quality goal for TDS is 450 mg/L. TDS concentrations were greater than the upper limit in about two percent of the primary aquifers in the central portion of the valley and in about six percent of the primary aquifers in the northern portions of the basin (Belitz 2010, Bennett 2010, Burton 2012). TDS concentrations in the northern portion of the San Joaquin Valley Groundwater Basin are generally higher than in the Sacramento Valley Groundwater Basin. Concentrations of TDS along the east side of the Basin are generally

lower than along the west side, as a result of higher quality water recharging the aquifer and soil types.

*Organic Constituents:*

Solvents were detected at concentrations greater than the MCL in less than one percent of the primary aquifers within the basin. Other VOCs (e.g., trihalomethanes and organic synthesis reagents) were not detected at concentrations above MCLs in the primary aquifers (Belitz 2010, Bennett 2010, Burton 2012).

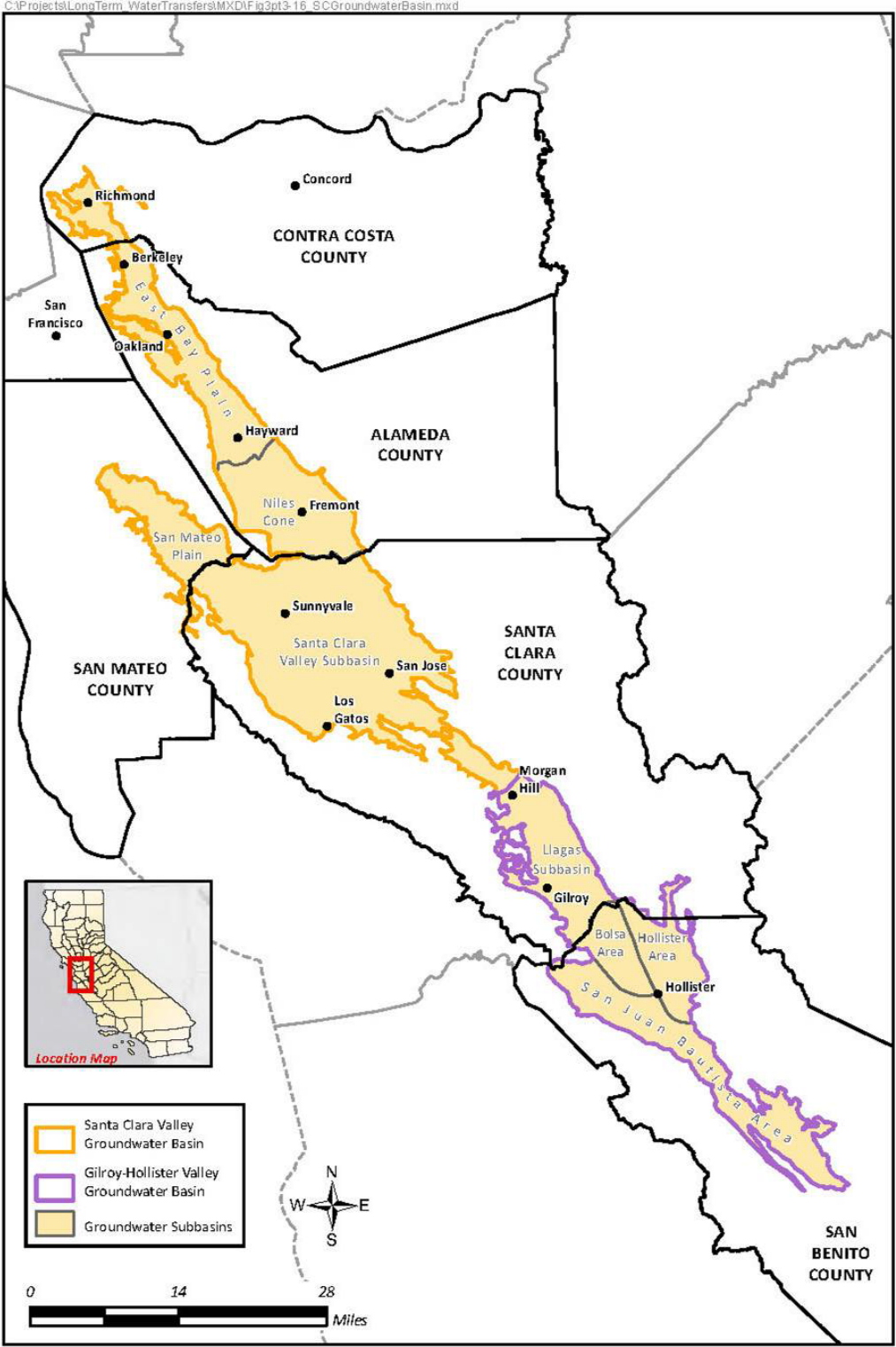
**3.3.1.3.4 Santa Clara Valley Groundwater Basin (Santa Clara Valley Subbasin)**

Buyers in the San Francisco Bay area include Santa Clara WD, Contra Costa WD, and East Bay MUD.

Santa Clara WD is the only buyer within the San Francisco Bay area that relies on groundwater resources to meet their existing water supply demands. Santa Clara WD underlies the Santa Clara Valley Groundwater Basin and the Gilroy-Hollister Valley Groundwater Basin. The Santa Clara Valley Groundwater Basin contains the Santa Clara Valley, San Mateo Plain and East Plain subbasins. The Santa Clara subbasin occupies a structural trough parallel to the northwest trending Coast Range. The Diablo Range bounds it on the west and the Santa Cruz Mountains form the basin boundary on the east. It extends from the northern border of Santa Clara County to the groundwater divide near the town of Morgan Hill. Figure 3.3-19 shows the Santa Clara Valley Groundwater Basin and subbasins within the area of analysis.

Contra Costa WD does not rely on groundwater resources as a significant part of its water supply (Contra Costa WD 2011). The water transfers alternatives discussed in this document are not anticipated to change the use of groundwater resources within the Contra Costa WD area; therefore, details of groundwater conditions in this area are not discussed here.

East Bay MUD also does not rely on groundwater resources but provides surface water supplies from the Mokelumne River and local runoff (East Bay MUD 2012). Thus, similar to the Contra Costa WD, the alternatives discussed in this document are not anticipated to change the use of groundwater resources within the East Bay MUD service area.



**Figure 3.3-19. Santa Clara Valley and Gilroy-Hollister Valley Groundwater Basins**

### **Geology, Hydrogeology, and Hydrology**

The Santa Clara Valley Subbasin includes continental deposits of unconsolidated to semi-consolidated gravel, sand, silt, and clay. Two members form this group, the Santa Clara Formation of Plio-Pleistocene age and the younger alluvium of Pleistocene to Holocene age (DWR 1975). The combined thickness of these two units likely exceeds 1,500 feet (DWR 1967).

The Santa Clara Formation rests unconformably on impermeable rocks that mark the bottom of the groundwater subbasin (DWR 1975). The Santa Clara Formation is exposed only on the west and east sides of the Santa Clara Valley. The exposed portions are composed of poorly sorted deposits ranging in grain size from boulders to silt (DWR 1975). Well logs indicate that permeability increases from west to east and that in the central part of the valley permeability and grain size decrease with depth (DWR 1975).

In the Santa Clara Valley, groundwater occurs in Pleistocene to Holocene alluvium deposits. The permeability of the valley alluvium is generally high and all large production wells derive their water from it (DWR 1975). Valley alluvium is deposited as a series of convergent alluvial fans generally comprised of unconsolidated gravel, sand, silt, and clay. It becomes progressively finer grained in the central portion of the valley. A confined aquifer zone is present in the northern portion of the subbasin where it is overlain by a low-permeability clay layer (Santa Clara Valley WD 2001). The southern portion of the subbasin is generally unconfined and contains no thick clay layers (Santa Clara Valley WD 2001).

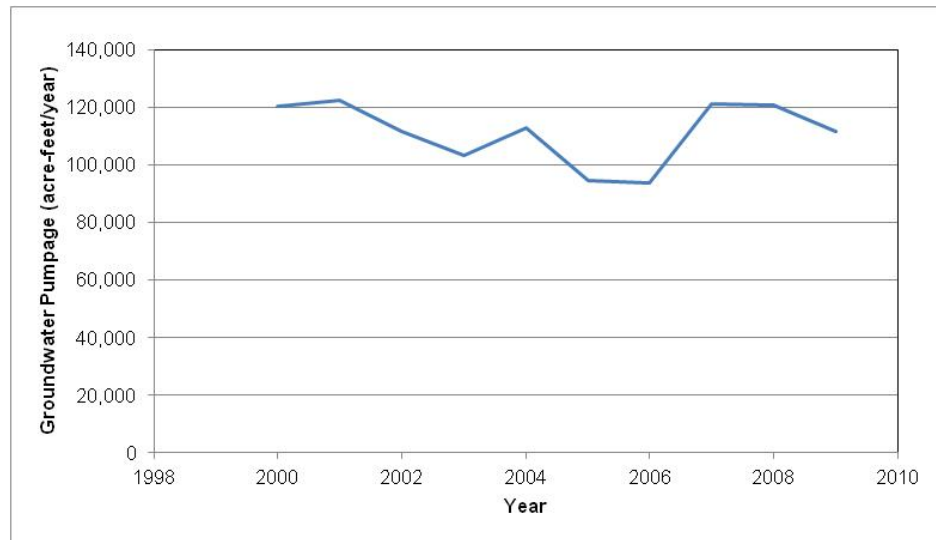
Natural recharge occurs principally as infiltration from streambeds that exit the upland areas within the drainage basin and from direct percolation of precipitation that falls on the basin floor. Annual precipitation for the Santa Clara Valley Groundwater basin ranges from less than 16 inches in the valley to more than 28 inches in the upland areas (DWR 2003).

The main surface water features in the Santa Clara Valley Groundwater Basin are the tributaries to San Francisco Bay including Coyote Creek, Guadalupe River, and Los Gatos Creek. The Santa Clara Valley WD conducts an artificial recharge program by releasing locally conserved or imported water to in-stream and off-stream facilities (Santa Clara Valley WD 2001). District-wide controlled in-stream recharge accounts for about 45 percent of groundwater recharge in district facilities (Santa Clara Valley WD 2001). In-stream recharge occurs along stream channels in the alluvial apron upstream from the confined zone. Spreader dams (creating temporary or permanent impoundments in the stream channel) are a key component of the in-stream recharge program,

increasing recharge capacity by approximately ten percent (Santa Clara Valley WD 2001).

### **Groundwater Production, Levels and Storage**

Santa Clara Valley WD manages the Santa Clara Valley Subbasin. Groundwater is pumped within the district by major water retailers, well owners, and agricultural users. Annual average groundwater pumping within the Santa Clara Valley Subbasin has remained relatively constant over time. Figure 3.3-20 shows historic groundwater pumping from 2000 to 2009 within the subbasin.



**Figure 3.3-20. Historic Groundwater Pumping in the Santa Clara Valley Subbasin**

Historically, since the early 1900s through the mid-1960s groundwater level declines from groundwater pumping have induced subsidence in the Santa Clara Valley Subbasin and caused degradation of the aquifer adjacent to the bay from saltwater intrusion. Prior to surface water import via the Hetch Hetchy and South Bay Aqueducts and the introduction of an artificial recharge program, water levels declined more than 200 feet in the Santa Clara Valley (Santa Clara Valley WD 2000). Santa Clara Valley WD has also implemented various recharge programs that use local runoff and imported water deliveries to recharge groundwater through approximately 390 acres of recharge ponds and 90 miles of local creeks to stop groundwater overdraft and land subsidence (Santa Clara Valley WD 2001). Groundwater levels have generally increased since 1965 as a result of increased in-stream and off-stream recharge programs and decreased pumping due to increase in availability of imported surface water (Santa Clara Valley WD 2001). Figure 3.3-21 shows the location of selected monitoring wells within the Santa Clara Valley Subbasin and the groundwater elevation at the wells.

*This page left blank intentionally.*



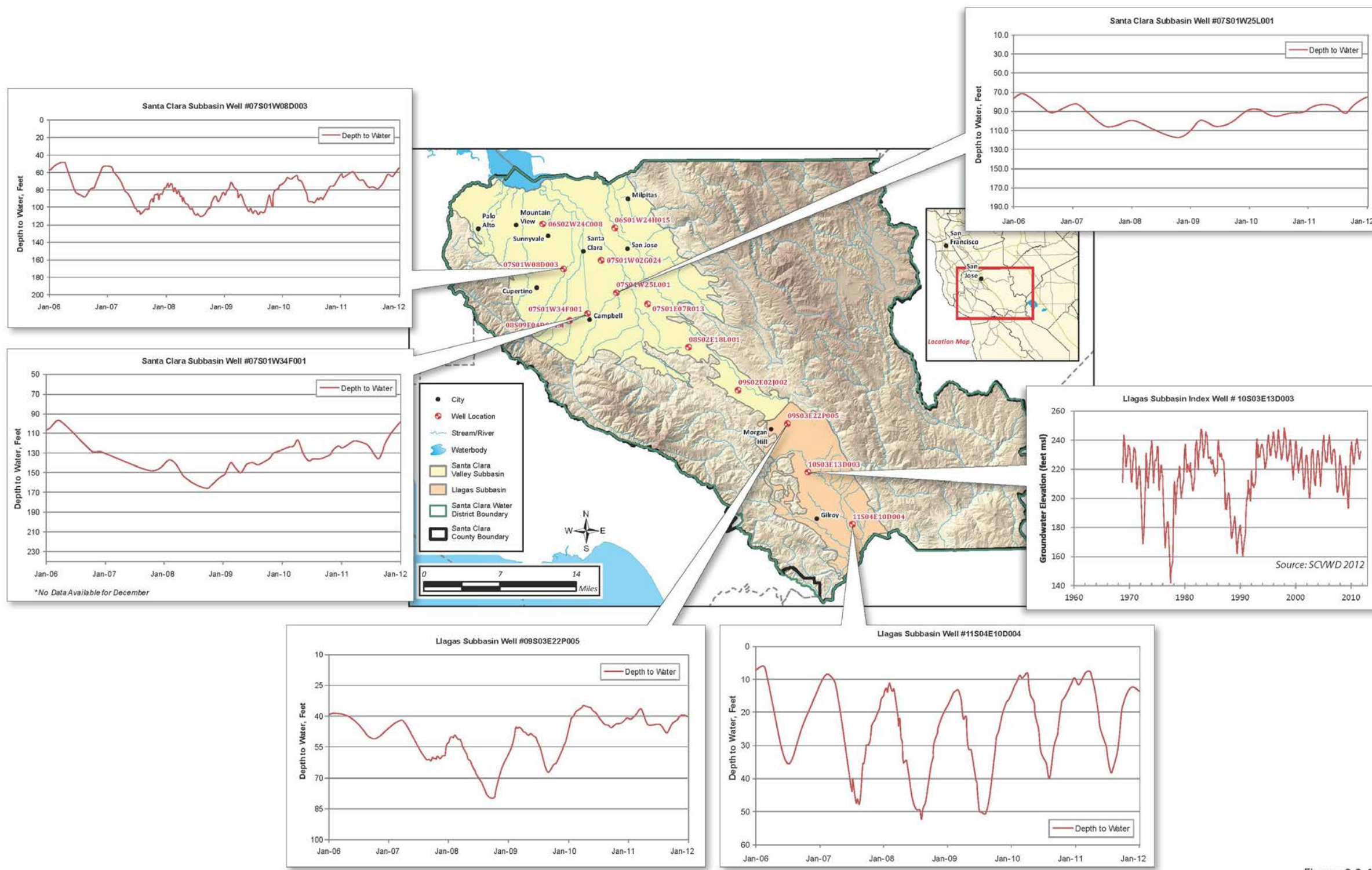


Figure 3.3-17

Figure 3.3-21. Historic Groundwater Elevations at Selected Wells in the Santa Clara Valley Subbasin

*This page intentionally left blank.*

The operational storage capacity of the Santa Clara Valley Subbasin is estimated to be 350,000 AF (Santa Clara Valley WD 2001). The operation storage capacity is less than the total storage capacity of the basin and accounts for available pumping capacity, avoidance of land subsidence, and problems associated with high groundwater levels. This estimate of operation storage capacity is based on an area defined by Santa Clara Valley WD that is approximately 15 square miles smaller than the Santa Clara Valley Subbasin boundaries as defined in DWR's Bulletin 118 (DWR 2003).

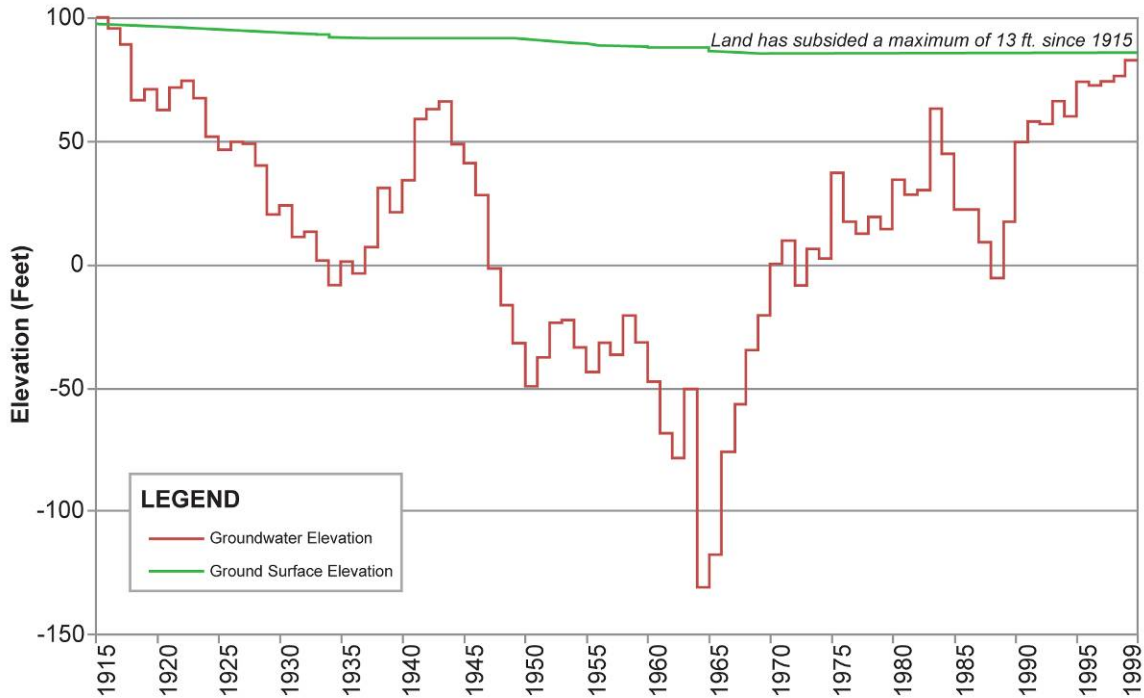
#### **Groundwater-Related Land Subsidence**

Historically, Santa Clara County has experienced as much as 13 feet of subsidence caused by excessive pumping of groundwater. One serious consequence of subsidence in Santa Clara County was that lands near the San Francisco Bay sank below sea level between 1940 and 1970, enabling salt water to intrude upstream through the mouths of rivers dramatically affecting the riparian habitat of the rivers. Figure 3.3-22 reflects the elevation of groundwater at the downtown San Jose index well (7S01E07R013) and the land surface elevation measured at First and St. James Streets in San Jose. The figure illustrates the increase in groundwater levels since 1965 through the implementation of Santa Clara Valley WD's groundwater recharge, treated water ground reinjection and water use efficiency programs. The figure also illustrated the substantial reduction in land subsidence due to groundwater level recovery. Santa Clara Valley WD conducts routine groundwater elevation, quality and land subsidence monitoring within the valley. Land Subsidence monitoring in the valley show the reduction in subsidence to an average of 0.01 feet per (Santa Clara Valley WD 2001).

#### **Groundwater Quality**

Though groundwater in the Santa Clara Valley Groundwater Basin is hard, it is suitable for most uses and drinking water standards are met at public supply wells without the use of treatment methods (Santa Clara Valley WD 2001). Groundwater alkalinity in the Santa Clara Valley Groundwater Basin is generally a bicarbonate type with sodium and calcium being the principal cations (DWR 1975).

Groundwater in the region has elevated mineral levels which could be associated with historical saltwater intrusion observed in the northern basin due to land subsidence (Santa Clara Valley WD 2001). Some wells with elevated nitrate concentration have been identified in the southern portion of the basin (Santa Clara Valley WD 2001).



Source: Santa Clara Valley WD 2000

**Figure 3.3-22. Land Subsidence at the San Jose Index Well**

### **3.3.1.3.5 Gilroy-Hollister Valley Groundwater Basin (Llagas Subbasin)**

The Llagas subbasin is part of the Gilroy-Hollister Valley Groundwater Basin. The Llagas subbasin occupies a northwest trending structural depression. The Diablo Range bounds it on the east and the Santa Cruz Mountains form the subbasin boundary on the west. The subbasin extends from the groundwater divide at Cochran Road near the town of Morgan Hill in the north to the Pájaro River in the south (Santa Clara Valley WD 2001).

#### **Geology, Hydrogeology, and Hydrology**

The Llagas subbasin is similar to the Santa Clara Valley subbasin and was formed by continental deposits of unconsolidated to semi-consolidated gravel, sand, silt and clay (DWR 1981). The water bearing formation of the subbasin includes the Santa Clara Formation and the valley fill material (alluvial and alluvial fan deposits) (DWR 1981).

The Santa Clara Formation is of Plio-Pleistocene age. This formation underlies much of the valley and unconformably overlies older non-water bearing sediments (DWR 1981). It consists of fairly well consolidated clay, silt, and sand with lenses of gravel. These sediments are generally of fluvial origin with an estimated maximum thickness of 1,800 feet (DWR 1981). The lower portions of deeper wells within the

subbasin likely intersect the Santa Clara Formation. Alluvial fan deposits of Holocene age occur at the margin of the valley basin. They are composed of a heterogeneous mixture of unconsolidated to semi-consolidated clay, silt, sand, and gravel that are partially confined locally (DWR 1981). The alluvial fan deposits range in thickness from three to 125 feet and overlie the Santa Clara Formation and other older non-water-bearing deposits (DWR 1981). A number of wells supply groundwater of excellent quality for irrigation and municipal purposes (DWR 1981).

Older Alluvium of Plio-Pleistocene age is distributed in the central portion of the valley from the northern boundary of the subbasin to Gilroy. Older Alluvium consists of unconsolidated clay, silt, and sand formed by floodplain processes. It characteristically is identified by a dense clayey subsoil that acts as an aquitard to vertical movement of water and limits recharge potential (DWR 1981). It provides adequate yields to wells up to 100 feet in depth and water obtained from this formation is generally suitable for most uses (DWR 1981). Younger alluvium of Holocene age occurs in the flat lying areas from Gilroy south to the subbasin's southern boundary. Similar to the Older Alluvium, the Younger Alluvium has been formed principally as a floodplain deposit but it does not have a well-defined clay subsoil. The Younger Alluvium has a maximum thickness of about 100 feet and generally overlies the Older Alluvium and alluvial fan deposits (DWR 1981). Groundwater in the Younger Alluvium is generally unconfined and the quality of water is acceptable for domestic purposes (DWR 1981).

The dominant geohydrologic feature in the subbasin is an inland valley that is drained to the south by tributaries of the Pájaro River, including Uvas and Llagas creeks. Annual precipitation for the Llagas subbasin ranges from less than 16 inches in the south to more than 24 inches in the north (DWR 2003).

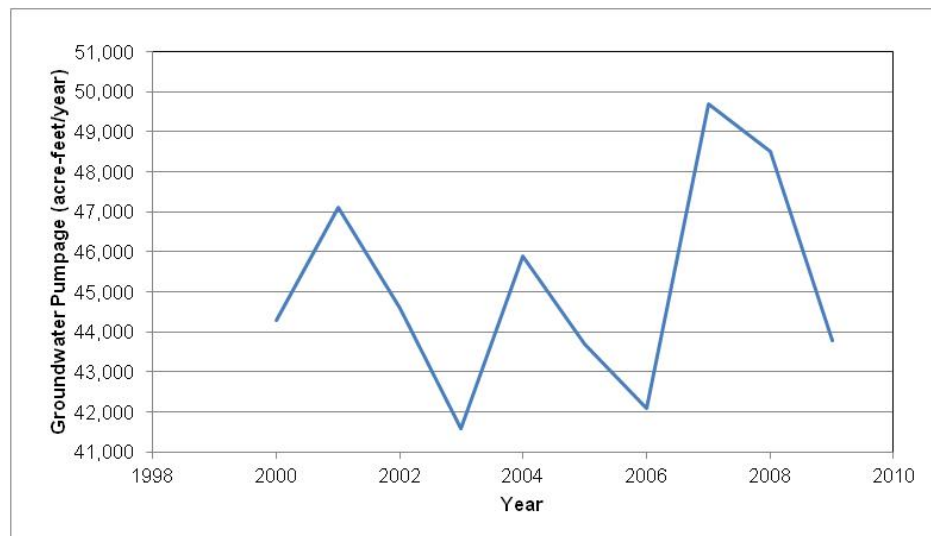
### **Groundwater Production, Levels and Storage**

Santa Clara Valley WD manages the Llagas subbasin and groundwater is pumped within the district by major water retailers, well owners and agricultural users. Figure 3.3-23 shows historic groundwater pumping from 2000 to 2009 within the basin.

Figure 3.3-21 shows the groundwater elevation in the Llagas subbasin index well (10S03E13D003). Groundwater levels remained relatively stable over the period of record with the exception of water level declines and subsequent recovery associated with the 1976-1977 and 1987-1992 drought periods. While groundwater elevations in the index well are not indicative of elevations in all wells within the subbasin, it is

representative of relative changes in groundwater levels within the subbasin (Santa Clara Valley WD 2001).

Natural groundwater recharge based on the long-term average for the Llagas subbasin is estimated to be 44,300 AF per year (Santa Clara Valley WD 2001). Total facility recharge (Artificial Recharge) countywide is estimated to be 157,200 AF (Santa Clara Valley WD 2001). The operational storage capacity of the Llagas subbasin is estimated to be between 150,000 and 165,000 AF (Santa Clara Valley WD 2010). The operation storage capacity is less than the total storage capacity of the subbasin and accounts for available pumping capacity, avoidance of land subsidence, and problems associated with high groundwater levels.



**Figure 3.3-23. Historic Groundwater Pumping Within the Llagas Subbasin**

#### **Groundwater-Related Land Subsidence**

Historically, Santa Clara County has experienced as much as 13 feet of subsidence caused by excessive pumping of groundwater. Most of the subsidence occurred in the Santa Clara Valley subbasin (Santa Clara Valley WD 2000).

#### **Groundwater Quality**

Groundwater alkalinity in the Llagas subbasin is generally high, similar to the Santa Clara Valley subbasin. Though the water is hard, it is suitable for most uses and drinking water standards are met at public supply wells without the use of treatment methods (Santa Clara Valley WD 2001).

The Santa Clara Valley WD created a Nitrate Management Program in October 1991 to investigate and remediate increasing nitrate concentrations in the Llagas subbasin (Santa Clara Valley WD 2001). Nitrate concentrations appear to be increasing over time and elevated concentrations of nitrate still exist in the Llagas subbasin (Santa Clara Valley WD 2001). Since 1997, more than 600 wells in south Santa Clara County including the Llagas and Coyote subbasins have been tested for nitrate. The 2009 median nitrate concentration for the principal aquifer zone of the Llagas Subbasin was 30 mg/L, with a maximum value of 155 mg/L (Santa Clara Valley WD 2010).

### **3.3.2 Environmental Consequences/Environmental Impacts**

This section describes assessment methods and presents effects of the proposed alternatives on groundwater resources in the area of analysis. Groundwater substitution and cropland idling transfers could alter the existing subsurface hydrology and thus result in a variety of effects to groundwater levels, land subsidence, or groundwater quality, which are further described below.

*Groundwater Levels:* Changes in groundwater levels could cause multiple secondary effects. Declining groundwater levels could result in: (1) increased groundwater pumping costs due to increased pumping depth; (2) decreased yield from groundwater wells due to reduction in the saturated thickness of the aquifer; or (3) lowered groundwater table elevation to a level below the vegetative root zone, which could result in environmental effects. This groundwater analysis examines effects associated with item (2); pumping costs are considered in Section 3.10, Regional Economics, and effects to vegetation are considered in Section 3.8, Vegetation and Wildlife.

*Land Subsidence:* Excessive groundwater extraction from confined and unconfined aquifers could lower groundwater levels and decrease pore-water pressure. The reduction in pore-water pressure could result in a loss of structural support for clay and silt beds, which could lower the ground surface elevation (land subsidence). The compression of fine-grained deposits, such as clay and silt, is largely permanent. Infrastructure damage to buildings, conveyance and drainage facilities, and wells and alteration of drainage patterns are possible consequences of land subsidence.

*Groundwater Quality:* Changes in groundwater levels and the potential change in groundwater flow directions could cause a change in groundwater quality through a number of mechanisms. One mechanism is the potential mobilization of areas of poorer quality water, drawn down from shallow zones, or drawn up into previously unaffected areas.

Changes in groundwater gradients and flow directions could also cause (and speed) the lateral migration of poorer quality water.

### **3.3.2.1 Assessment Methods**

#### ***3.3.2.1.1 Numerical Modeling of Regional Groundwater Level Declines***

Numerical groundwater modeling analysis was performed using the Sacramento Valley Finite Element Groundwater Model (SACFEM2013) developed to simulate groundwater conditions in the Sacramento Valley. SACFEM2013 was selected as the numerical modeling tool for this analysis based on the state of the model and its capabilities to simulate groundwater conditions at a greater level of detail than other potential modeling tools within the Seller Service Area. Reclamation commissioned a peer review of the SACFEM2013 model in 2010 (WRIME 2011). Revisions were made to the model and the revised model was used for the impacts analysis described here.

SACFEM2013 uses the MicroFEM finite-element numerical modeling code. MicroFEM is capable of simulating multiple aquifer systems in both steady state and transient conditions. The model is capable of simulating groundwater conditions and groundwater/surface water interactions in the valley. SACFEM2013 was also used to estimate how groundwater pumping and recharge affects surface water; these impacts are assessed in Section 3.1, Water Supply.

SACFEM2013 covers the entire Sacramento Valley Groundwater Basin from just north of Red Bluff to the Cosumnes River in the south (see Figure 3.3-24). The model was calibrated to historic conditions from Water Years (WY) 1970 through WY 2009. This SACFEM2013 model simulation, which includes highly variable hydrology (from very wet periods to very dry periods), was used as a basis for simulating groundwater substitution pumping.

Groundwater substitution pumping was simulated as an additional pumping stress on the system, above the baseline pumping volume. The annual volume of transfers was determined by comparing the supply in the seller service area to the demand in the buyer service area. The availability of supplies in the seller service area was determined based on data provided by the potential sellers. The demand was estimated using demand data provided by East Bay MUD and Contra Costa WD as well as the available capacity at the Delta export pumps to convey transfers. The available export capacity was determined from CalSim II model results. The CalSim II model currently only simulates conditions through WY 2003. The available capacity for south of delta exports was typically more limiting than the south of delta water supply demand. Because CalSim II results are only available through 2003, the SACFEM2013 model simulation was truncated at the end of WY 2003.



The analysis of supply and demand resulted in the potential to export groundwater substitution pumping transfers through the Delta during 12 of the years from WY 1970 through WY 2003 (33 years, SACFEM2013 simulation period). Each of the 12 annual transfer volumes was included in a single model simulation. Including each of the 12 years of transfer pumping in one simulation rather than 12 individual simulations allows for the potential compounding effects from pumping from prior years. Appendix D, Groundwater Model Documentation, includes more information about the use of SACFEM2013 in this analysis.

#### **3.3.2.1.2 Qualitative Assessments**

The groundwater model area includes most, but not all, of the potential sellers. Anderson-Cottonwood ID is not in the Sacramento Valley and is located outside of the area that is covered by the groundwater model. Therefore, changes to groundwater conditions in the Anderson-Cottonwood ID were assessed qualitatively. The buyers are also not included in the groundwater model, so the potential effects are analyzed qualitatively.

Potential land subsidence and changes in groundwater quality were also assessed qualitatively because these processes are not part of the numerical groundwater model. For land subsidence, the modeled groundwater drawdown was compared to areas with existing subsidence to identify areas that may be susceptible to impacts. Additionally simulated groundwater drawdown was compared to estimates of preconsolidated heads/historic low heads. Groundwater quality impacts were assessed by considering areas of known water quality concerns and determining whether modeled groundwater drawdown could cause those areas to migrate.

#### **3.3.2.2 Significance Criteria**

An impact would be potentially significant if implementation of groundwater substitution transfers or cropland idling would result in:

- A net reduction in groundwater levels that would result in adverse environmental effects or effects to non-transferring parties;
- Permanent land subsidence caused by significant groundwater level declines.
- Degradation in groundwater quality such that it would exceed regulatory standards or would substantially impair reasonably anticipated beneficial uses of groundwater; or

### **3.3.2.3 Alternative 1: No Action/No Project**

#### **3.3.2.3.1 Seller Service Area**

*Groundwater pumping would not affect groundwater levels, land subsidence, or groundwater quality.* There would be no groundwater substitution pumping transfers in the Seller Service Area under the No Action/No Project Alternative. Groundwater pumping would be expected to continue on the same pattern as currently observed. Therefore, the potential for groundwater level declines, increased land subsidence, or groundwater quality degradation in the Seller Service Area would be the same as existing conditions.

#### **3.3.2.3.2 Buyer Service Area**

*Increased groundwater pumping would not result in temporary groundwater level declines.* Under the No Action/No Project Alternative, water users in the Buyer Service Area may use groundwater pumping to meet shortages, which could result in temporary groundwater level declines. Potential buyers have already taken steps to address shortages that have occurred in recent years, and several potential buyers rely heavily on groundwater to meet their water supply demands (see Table 3.3-2 for details). Groundwater pumping in these areas has the potential to lower groundwater levels and affect the performance of wells nearby the pumping wells. However, existing pumping activities in the Buyer Service Area already include groundwater pumping to cover existing shortages, and future shortages are anticipated to follow current annual/seasonal and long-term trends. Therefore, the potential for groundwater level declines in the Buyer Service Area would be the same as existing conditions.

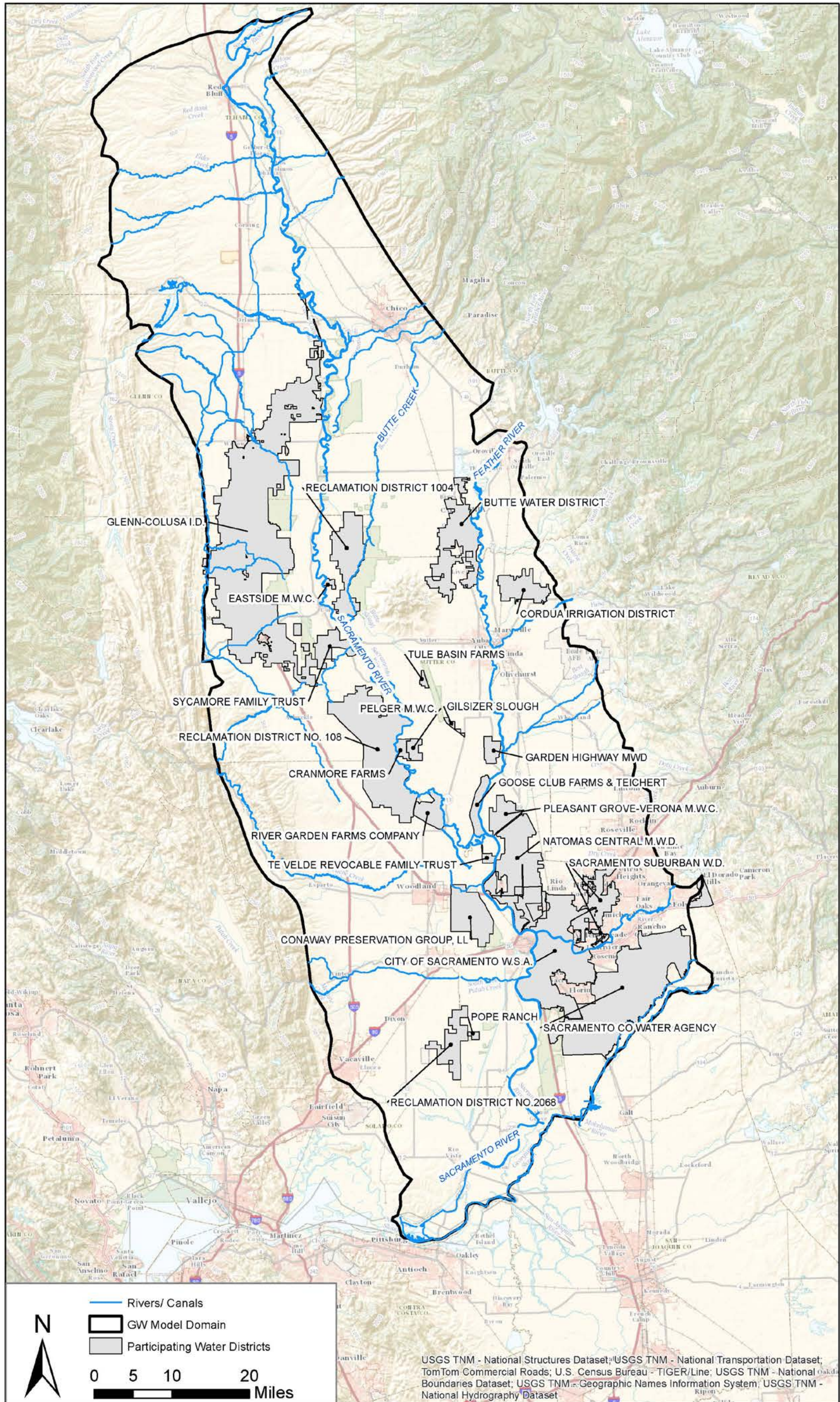


Figure 3.3-24. The SACFEM2013 Domain

*This page intentionally left blank.*

**Table 3.3-2. Historic Groundwater Pumping and Groundwater Basin Safe Yields for Potential Buyers**

Potential Buyer Agency	Underlying Groundwater Basin	Safe Yield of Groundwater Basin (AF)	Groundwater Pumping (AF/year)
Westlands WD <sup>1</sup>	Westside Subbasin	200,000	15,000 – 600,000 <sup>2</sup>
Santa Clara Valley WD <sup>3</sup>	Santa Clara Plain Subbasin	373,000 – 383,000	93,500 - 122,300 <sup>4</sup>
	Llagas Subbasin	150,000 – 165,000	41,600 - 49,700 <sup>4</sup>
Contra Costa WD <sup>5</sup>	-	-	3,000

<sup>1</sup> Source: Westlands WD 1996 1 Based on data from 1988 to 2011.

<sup>2</sup> Average pumping is approximately 218,600 AF/yr

<sup>3</sup> Source: Santa Clara Valley WD 2012

<sup>4</sup> Based on data from 2000 to 2009. Average pumping is approximately 156,330 AF/yr

<sup>5</sup> Source: Contra Costa WD 2011

*Groundwater pumping would not cause groundwater level declines that would lead to permanent land subsidence or migration of poor quality groundwater. In the Buyer Service Area, additional groundwater pumping may be expected during shortage periods. However, pumping activities in the Buyer Service Area already include groundwater pumping to cover shortages. Therefore, the potential for groundwater level declines that would cause permanent land subsidence or migration of poor quality groundwater in the Buyer Service Area would be the same as existing conditions.*

*Idling cropland would not decrease applied water recharge to the local groundwater system underlying the barren (idled) fields that would result in a decline in groundwater levels. Under the No Action/No Project Alternative, agricultural water users in the Buyer Service Area may increase the amount of cropland idling to meet shortages and reduce the amount of groundwater recharge. However, cropland idling activities in the Buyer Service Area already include actions to cover shortages. Therefore, the potential for changes in groundwater levels due to cropland idling in the Buyer Service Area would be the same as existing conditions.*

### 3.3.2.4 Alternative 2: Full Range of Transfers (Proposed Action)

#### **3.3.2.4.1 Seller Service Area: Redding Area Groundwater Basin**

*Increased groundwater substitution pumping could affect groundwater levels and may result in temporary declines of groundwater levels.* The proposed Anderson-Cottonwood ID transfer would extract up to 5,130 AF/year of groundwater from production wells (see Table 3.3-3 for details on number of wells and pumping capacity).

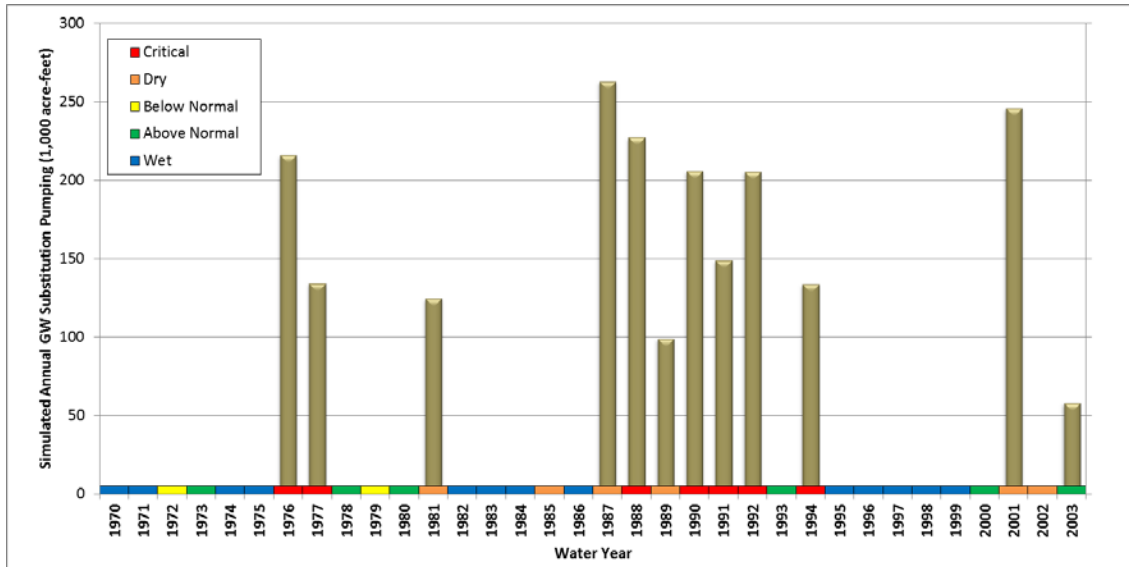
Unlike other groundwater substitution transfers, Anderson-Cottonwood ID's proposed transfer was not simulated in the SACFEM2013 because the model area does not include the Redding Area Basin. However, Anderson-Cottonwood ID has tested operation of these wells in the past at similar production rates and has observed no substantial impacts on groundwater levels or groundwater supplies (Anderson-Cottonwood ID 2013). Based on the results of the aquifer tests, effects from groundwater substitution transfers are likely to be less than significant. However, because of the uncertainty surrounding groundwater levels changes, especially during a very dry year, Anderson-Cottonwood ID would implement the Monitoring and Mitigation Plans described in GW-1 (see Section 3.3.4.1 for details).

*Increased groundwater pumping may lead to permanent land subsidence caused by water level declines.* Land subsidence has not been monitored in the Redding Area Groundwater Basin. However, there would be potential for subsidence in some areas of the basin if groundwater levels were substantially lowered. The groundwater basin west of the Sacramento River is composed of the Tehama Formation; this formation has exhibited subsidence in Yolo County and the similar hydrogeologic characteristics in the Redding Area Groundwater Basin could allow subsidence. Therefore, the effect of potential land subsidence in the Redding Area Groundwater Basin could be significant. To reduce these effects, the Mitigation Measure GW-1 (Section 3.3.4.1) specifies that transferring agencies establish monitoring and mitigation programs for groundwater substitution transfers. These programs will include periodic determination of land surface elevation in strategic locations throughout the transfer area. Mitigation Measure GW-1 would reduce the impacts to less than significant.

*Changes in groundwater levels, or in the prevailing groundwater flow regime, could cause a change in groundwater quality.* Additional pumping is not expected to be in locations or at rates that would cause substantial long-term changes in groundwater levels that would cause changes to groundwater quality. Consequently, changes to groundwater quality due to increased pumping would be less than significant in the Redding Area Groundwater Basin.

**3.3.2.4.2 Seller Service Area: Sacramento Valley Groundwater Basin**

Water Transfers via groundwater substitution could affect groundwater levels, land subsidence, and groundwater quality. Figure 3.3-25 shows the potential water transferred through groundwater substitution through the period of analysis under the Proposed Action in the SACFEM2013 Model.



**Figure 3.3-25. Simulated Groundwater Substitution Transfers under the Proposed Action in the SACFEM2013 Model**

*Increased groundwater substitution pumping may result in temporary declines of groundwater levels. Groundwater substitution pumping would occur when the buyers have capacity to divert the water from the Sacramento River or the Delta.*

The effects of the potential groundwater substitution shown in Figure 3.3-25 from pumping 327 wells simultaneously based on data collected from potential sellers (listed in Table 3.3-3) within the Sacramento Valley have been modeled in SACFEM2013 to estimate effects to groundwater resources. Additional information about the assignment of groundwater pumping in SACFEM2013 can be found in Appendix D, Groundwater Model Documentation. Figures 3.3-26 through 3.3-28 show the simulated drawdown of groundwater elevations under September 1976 hydrologic conditions (WY 1976 was historically a critical dry year). This time period represents the peak drawdown resulting from the first year of transfers in the groundwater model simulation period (WY 1970 through WY 2003). These figures show simulated drawdown at the water table (Figure 3.3-26); at approximately 200-300 feet bgs (Figure 3.3-27) and at approximately 700-900 feet bgs

(Figure 3.3-28). Drawdown at the water table (Figure 3.3-26) represents the estimated decline in the water surface within the shallow, unconfined portion of the aquifer (i.e., the height of water within a shallow groundwater well). The changes in the deeper portion of the aquifer (Figure 3.3-27 and Figure 3.3-28) represent a change in piezometric head in a well that is screened in this lower portion of the aquifer. A decrease in the head in the deeper aquifer would increase the work (and energy) required to withdraw the same amount of water from the deeper aquifer. The amount of drawdown in a deep well would vary depending on the aquifer characteristics, depth and screened interval of the well.

Similarly, Figures 3.3-29 through 3.3-31 show the simulated drawdown of groundwater elevations under September 1990 hydrologic conditions. This period represents the fourth year of a multi-year drought with transfers occurring in each year of the drought. Similar to the September 1976 figures, drawdown in 1990 is shown for the water table (Figure 3.3-29); at approximately 200-300 feet bgs (Figure 3.3-30) and at approximately 700-900 feet bgs (Figure 3.3-31). Each of these figures show the cumulative effects of multi-year transfers as groundwater substitution pumping was simulated in 1987, 1988, 1989, and 1990. Because groundwater substitution transfers were simulated during each year of this drought period, the groundwater table does not completely recover to pre-substitution conditions during this period. Groundwater level drawdown and subsequent recovery are can also be viewed at a specific location through the entire 33 year simulation period. Representative hydrographs were extracted from the model results at the 42 locations shown with pink triangles in Figures 3.3-26 through 3.3-31. Appendix E, Groundwater Modeling Results, includes hydrographs for all 42 locations and seven simulated model layers (varying depths throughout the model).

Three of the 42 locations are presented here to illustrate the simulated groundwater drawdown and recovery process within the Sacramento Valley. These three locations were selected as they are spread out over the Sacramento Valley and are shows the largest drawdowns within the 42 representative hydrograph locations.



**Table 3.3-3. Water Transfer through Groundwater Substitution under the Proposed Action**

Groundwater Basin	Potential Seller	Number of Wells	Pumping Rate per well (gpm)	Well Depth (ft)
Redding Area Valley	Anderson-Cottonwood ID	2	1,000-5,500	150-455
Sacramento Valley	Butte WD	2	4,000-4,200	263-580
	City of Sacramento	32	373-1,400	80-171
	Conaway Preservation Group	37	1,400-3,500	70-150
	Cordua ID	23	900-2,400	200-400
	Cranmore Farms	6	3,000-3,000	150-275
	Eastside MWC	1	3,800-3,800	150-240
	Garden Highway MWC	7	2,200-3,200	90-235
	Glenn-Colusa ID	11	2,389-3,305	500-1200
	Gilsizer Slough Ranch	3	2,016-2,016	150-275
	Goose Club Farms and Teichert Aggregates	13	3,000-3,000	150-275
	Natomas Central MWC	13	5,500-5,500	150-350
	Pelger MWC	3	4,700-4,700	101-230
	Pleasant Grove-Verona MWC	32	1,500-5,000	99-159
	Pope Ranch	2	2,117-2,117	150-275
	RD 1004	20	1,000-5,800	56-107
	RD 108	5	1,700-5,900	250-350
	RD 2068	4	1,500-1,500	209-438
	River Garden Farms	7	1,700-2,990	170-262
	Sacramento County Water Agency	39	455-3,000	170-225
	Sacramento Suburban WD	47	180-3,500	131-147
Sycamore MWC	12	2,500-3,500	256-862	
Te Velde	5	2,200-4,656	115-300	
Tule Basin Farms	3	3,050-4,850	150-275	

Key:

ft = feet

gpm = gallons per minute

ID = Irrigation District

MWC = Mutual Water Company

RD = Reclamation District

WD = Water District

Location 21 is near Sycamore Mutual Water Company and is in the northwestern portion of the Sacramento Valley approximately four miles from the Sacramento River and Butte Creek intersection and two miles from the Sacramento River and Sycamore Creek intersection. Figures 3.3-32 and 3.3-33 show the simulated groundwater level over time (i.e., hydrographs) at Location 21. Groundwater levels at this location return to near-baseline conditions approximately three to four years after the single year groundwater substitution transfer event in WY 1981. Recovery occurs after approximately six years following the multi-year transfer event from WY 1986 to WY 1994. These drawdown and recovery periods are shown in Figure 3.3-34. Most of the recovery near the pumping zone occurs in the year following the transfer event.

Recovery at the water table was more gradual. Groundwater recovery is highly dependent on (1) hydrology of following year, (2) proximity to surface water and (3) pumping in following year (i.e., if the subsequent year also includes groundwater substitution transfer pumping); and (4) aquifer properties.

Location 14 is near Cordua ID in the northeastern portion of the valley and approximately three miles from the Yuba River. Figures 3.3-35 and 3.3-36 show the simulated groundwater level over time at Location 14. Groundwater recovery at this location takes longer than at Location 21 (see Figure 3.3-37). It should be noted that Location 14 is located near the boundary of the model where the aquifer is thinner.

Location 31 is near the Sacramento County Water Agency in the southeastern portion of the Valley and approximately six miles from the American River. Figures 3.3-38 and 3.3-39 show the simulated groundwater level over time at Location 31. Figure 3.3-40 shows the change in groundwater heads at Location 31. Groundwater recovery at Location 31 is slower than at Location 21. Similar to Location 21 most of the recovery near the pumping zone occurs in the year after the transfer event. Groundwater levels return to approximately 75 percent of the baseline level five years after the single year transfer event in WY 1981 and between 50-75 percent six years after the multi-year transfer event from WY 1986 to WY1994 (see Figure 3.3-40).

Most areas in the model exhibit smaller drawdown changes than those shown in Figure 3.3-32 through Figure 3.3-40. Appendix E, Groundwater Modeling Results, includes hydrographs for all 42 representative hydrograph locations.

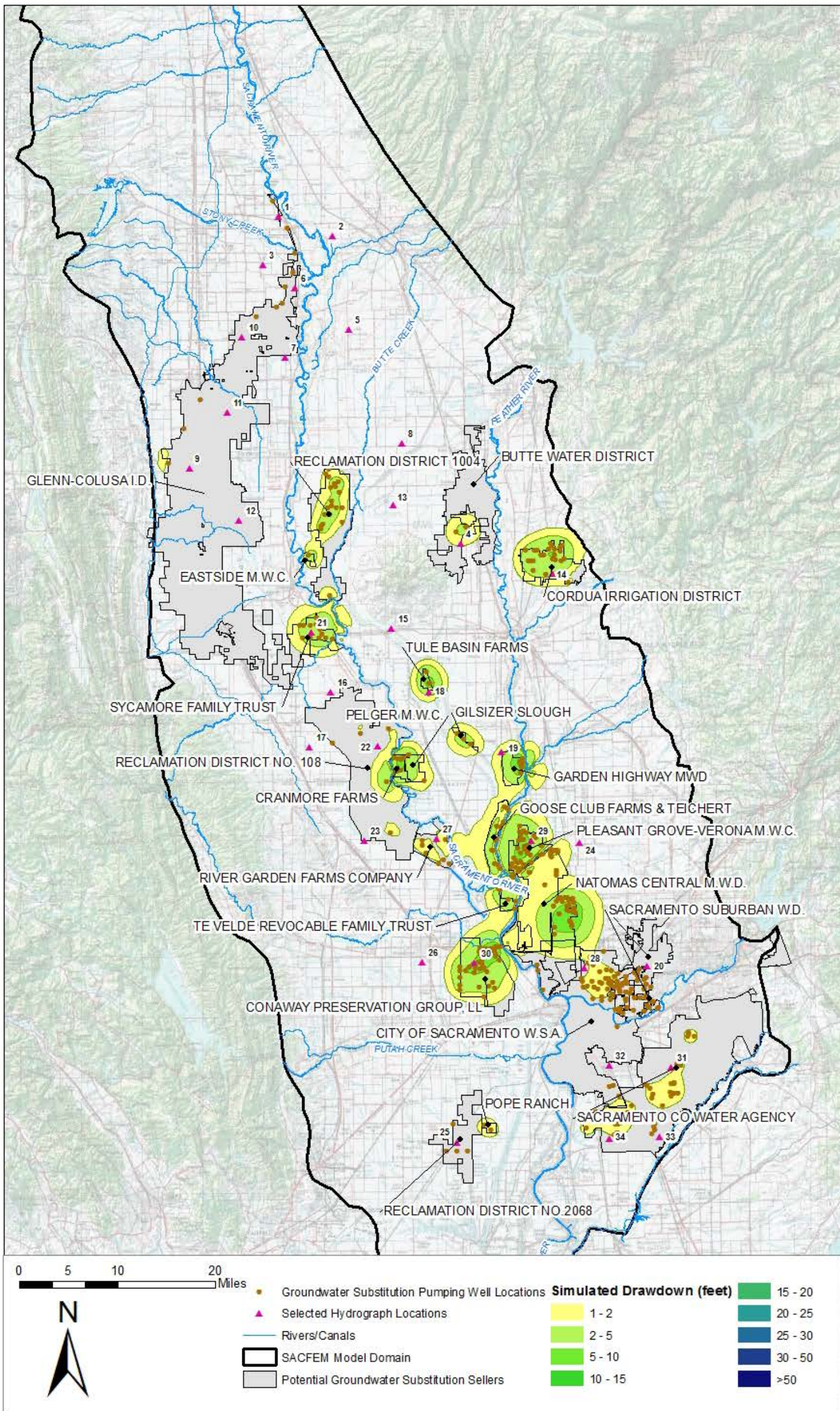


Figure 3.3-26. Simulated Change in Water Table Elevations (Aquifer Depth up to Approximately 35 feet), Based on September 1976 Hydrologic Conditions

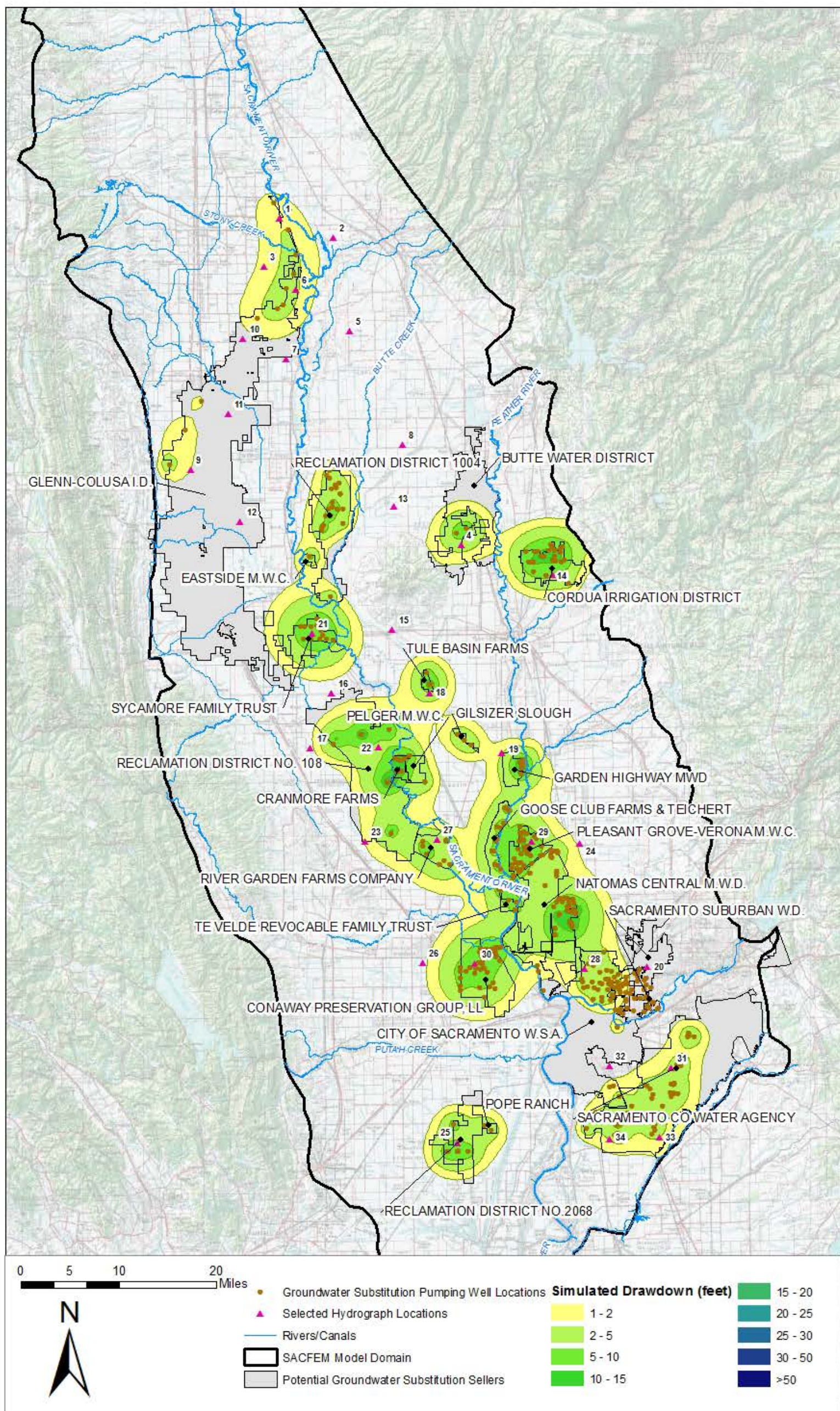


Figure 3.3-27. Simulated Change in Groundwater Head (Aquifer Depth of Approximately 200 to 300 feet), Based on September 1976 Hydrologic Conditions

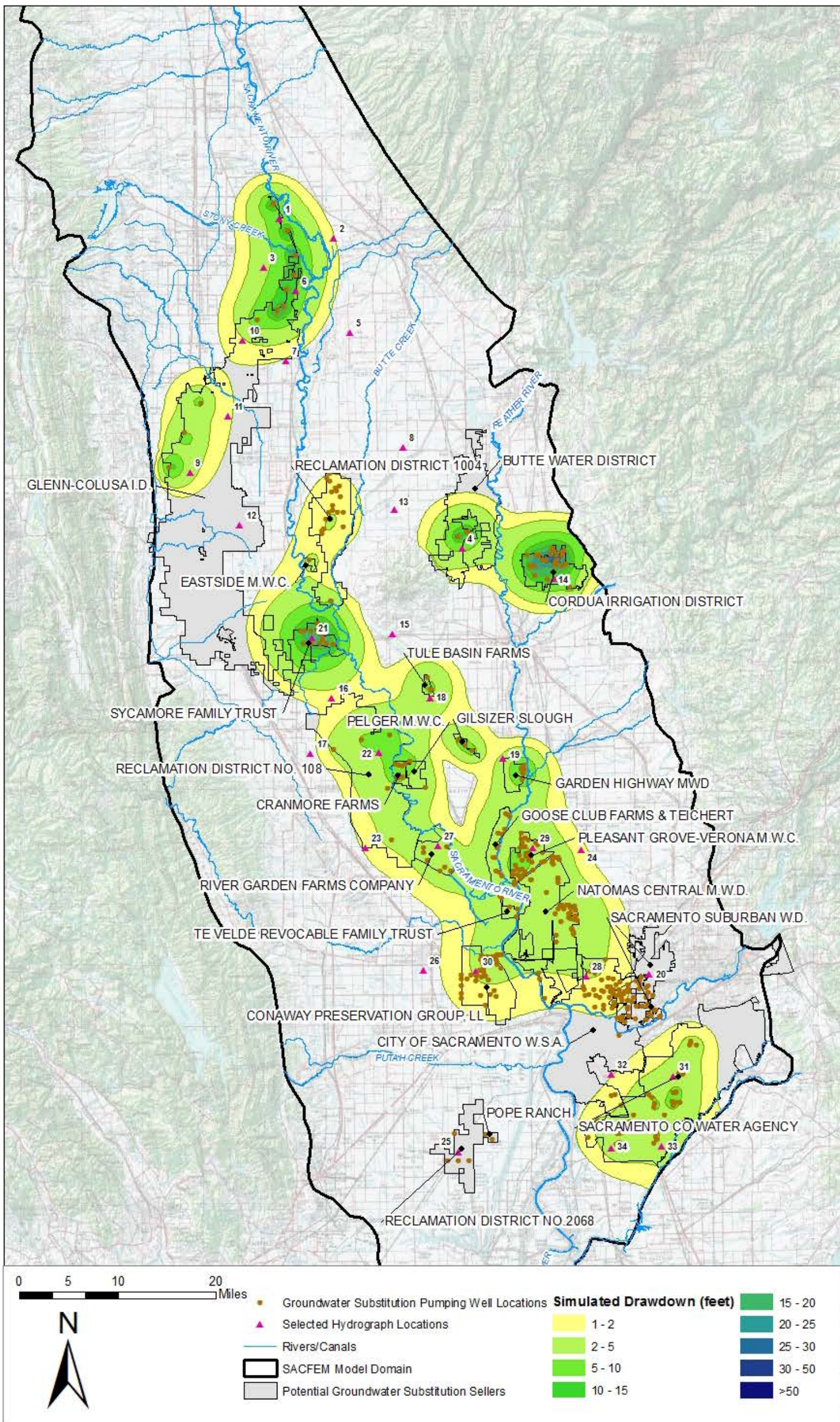


Figure 3.3-28. Simulated Change in Groundwater Head (Aquifer Depth of Approximately 700 to 900 feet), Based on September 1976 Hydrologic Conditions

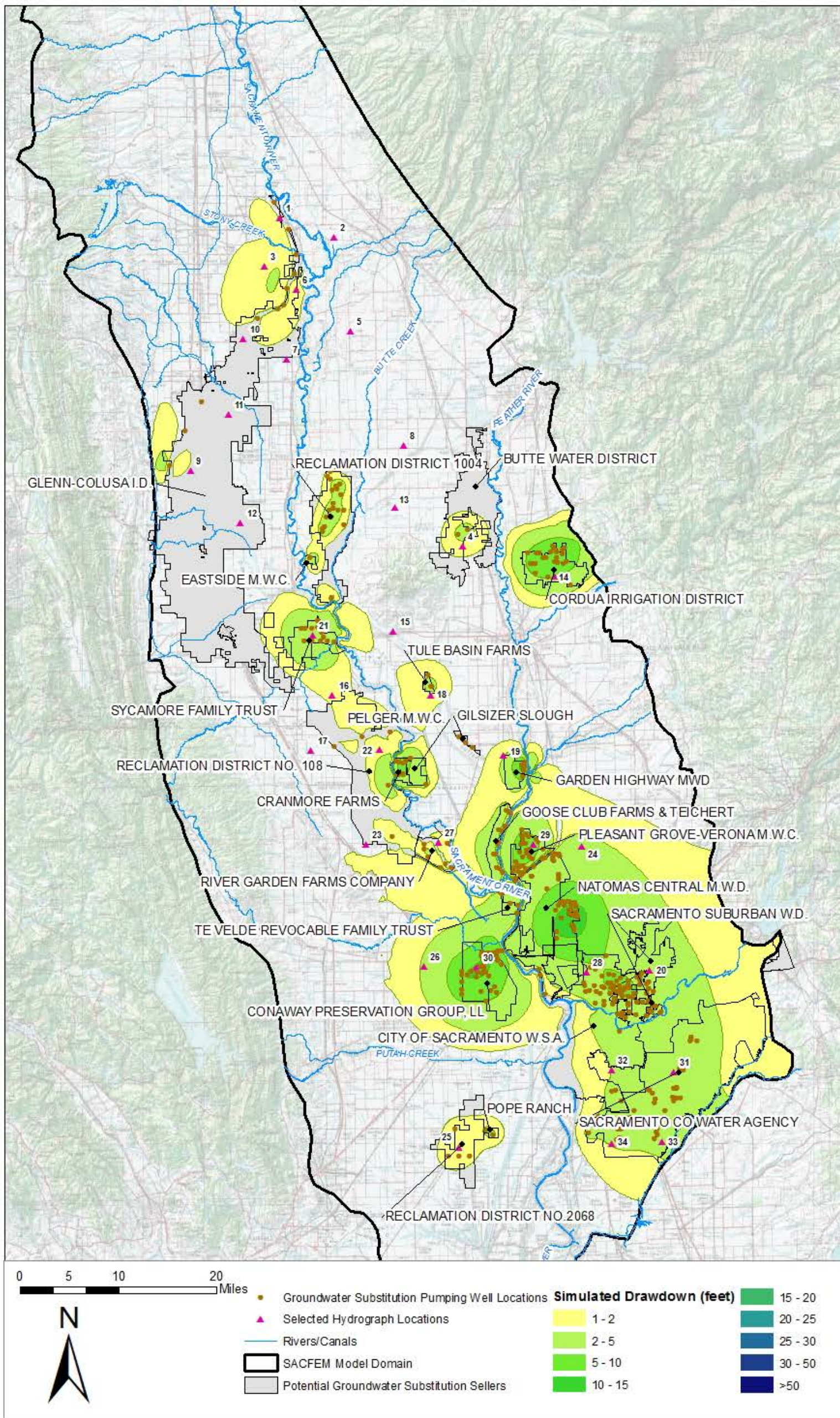


Figure 3.3-29. Simulated Change in Water Table Elevations (Aquifer Depth up to Approximately 35 feet), Based on September 1990 Hydrologic Conditions

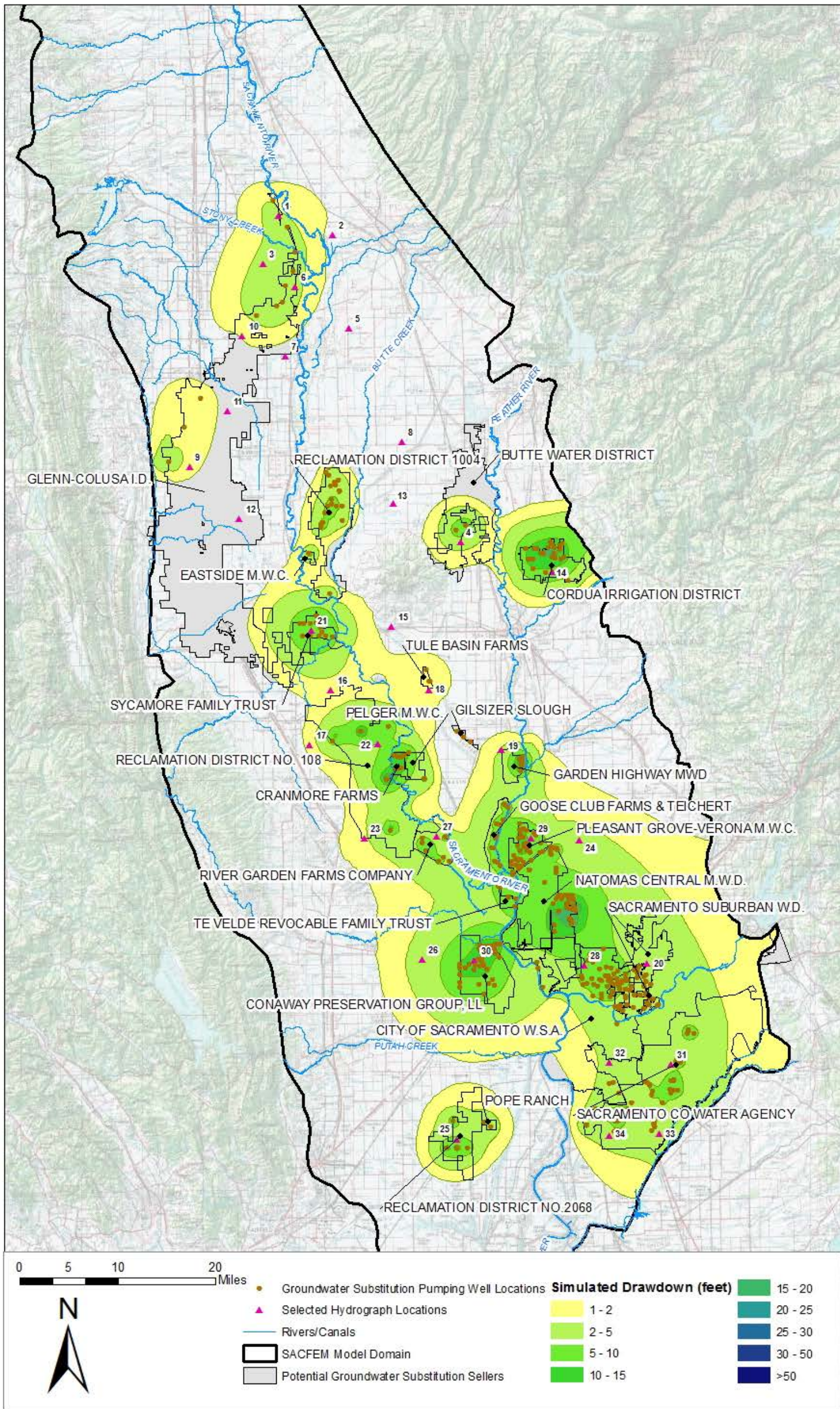


Figure 3.3-30. Simulated Change in Groundwater Head (Aquifer depth Approximately 200-300 feet), Based on September 1990 Hydrologic Conditions

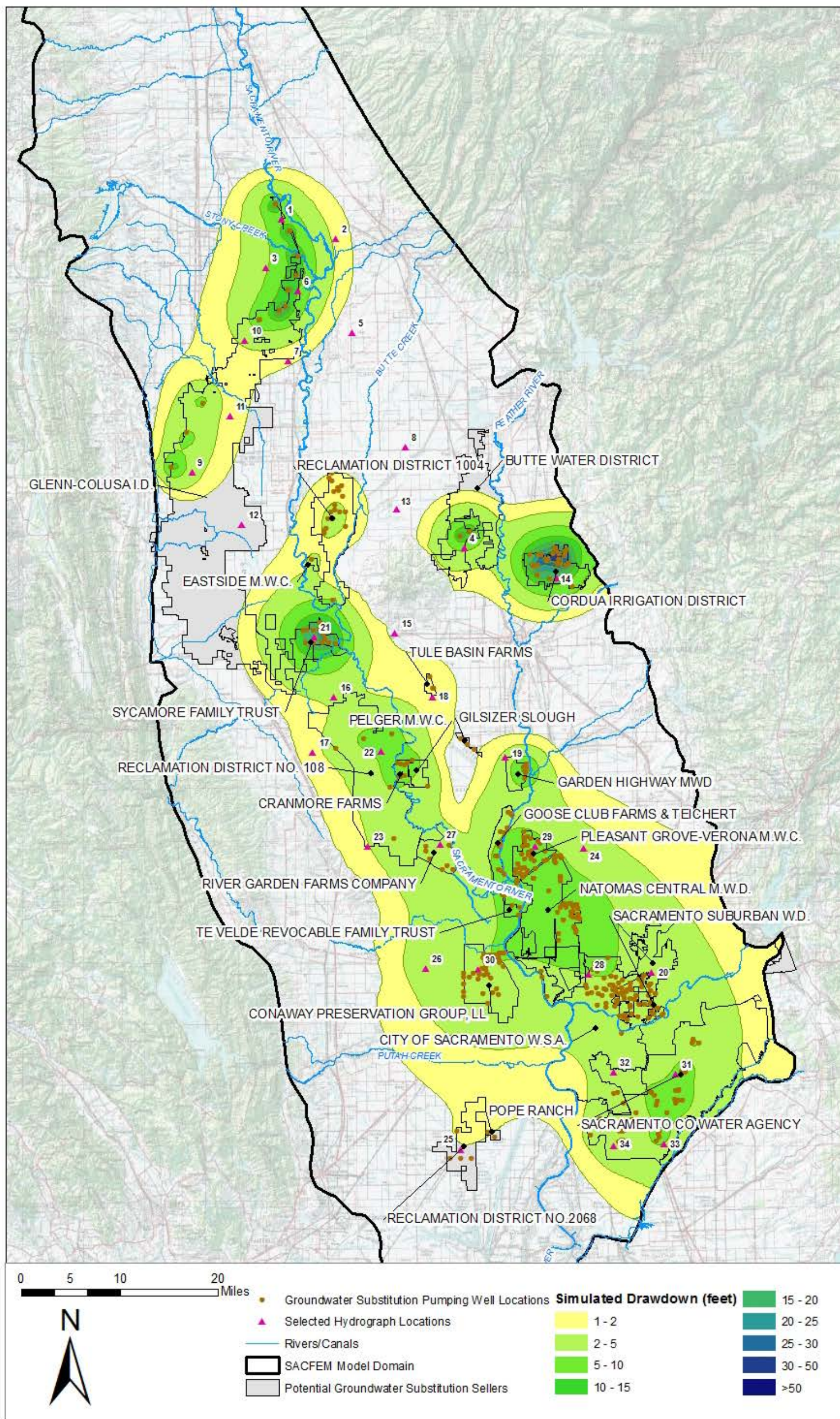
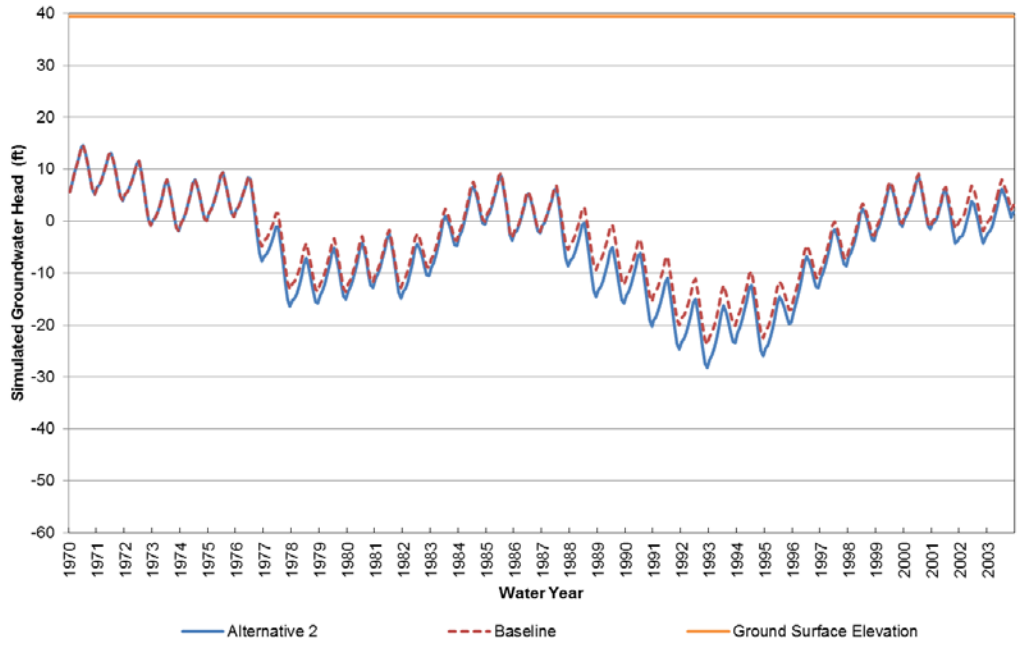
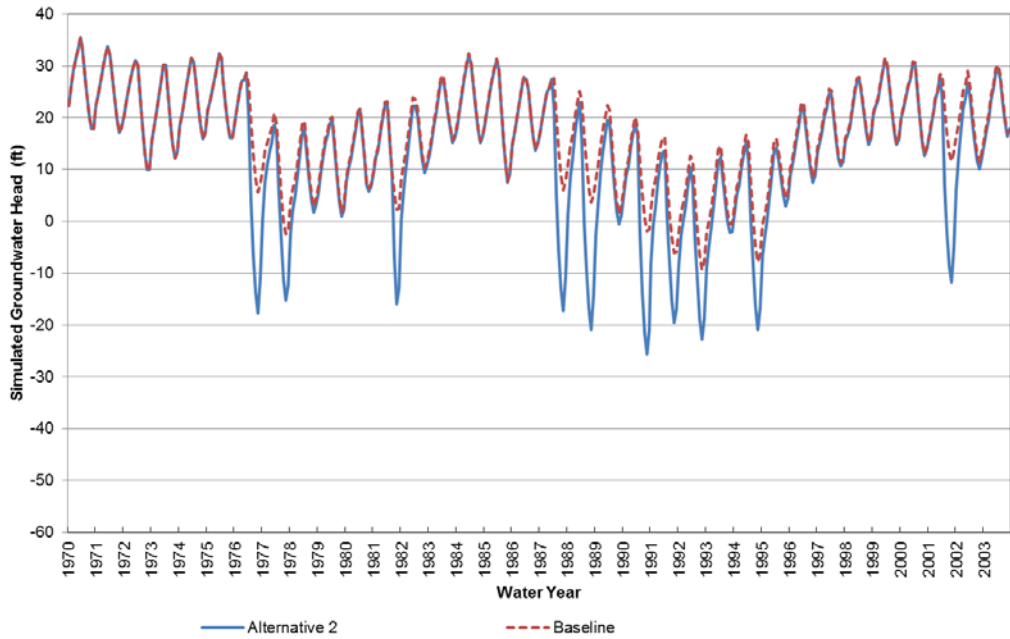


Figure 3.3-31. Simulated Change in Groundwater Head (Aquifer depth Approximately 700-900 feet), Based on September 1990 Hydrologic Conditions



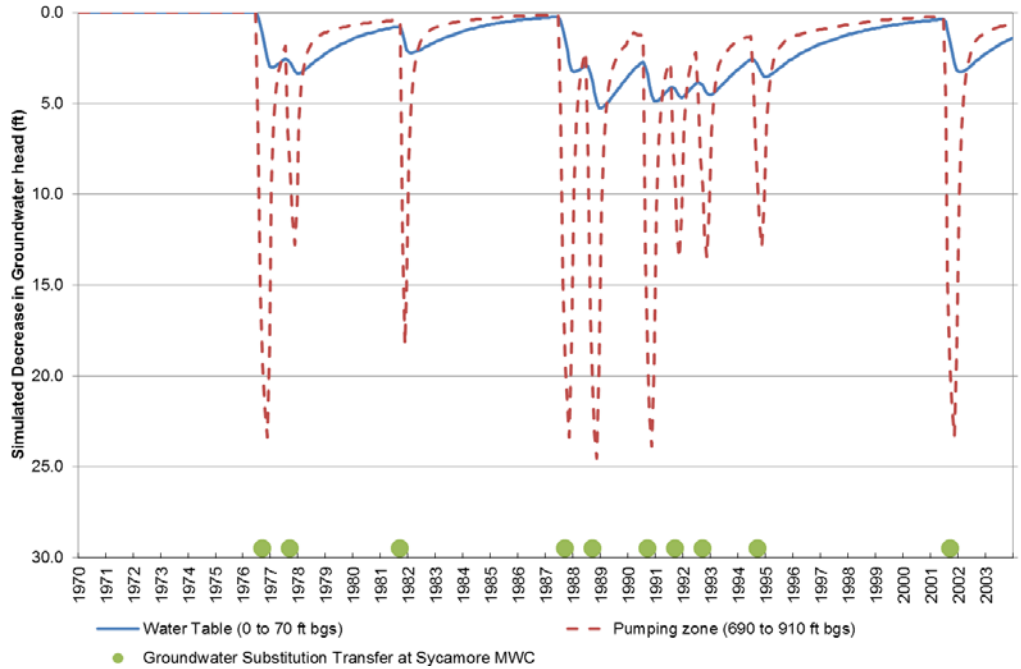


**Figure 3.3-32. Simulated Groundwater Table Elevation (Approximately 70 feet bgs) at Location 21**

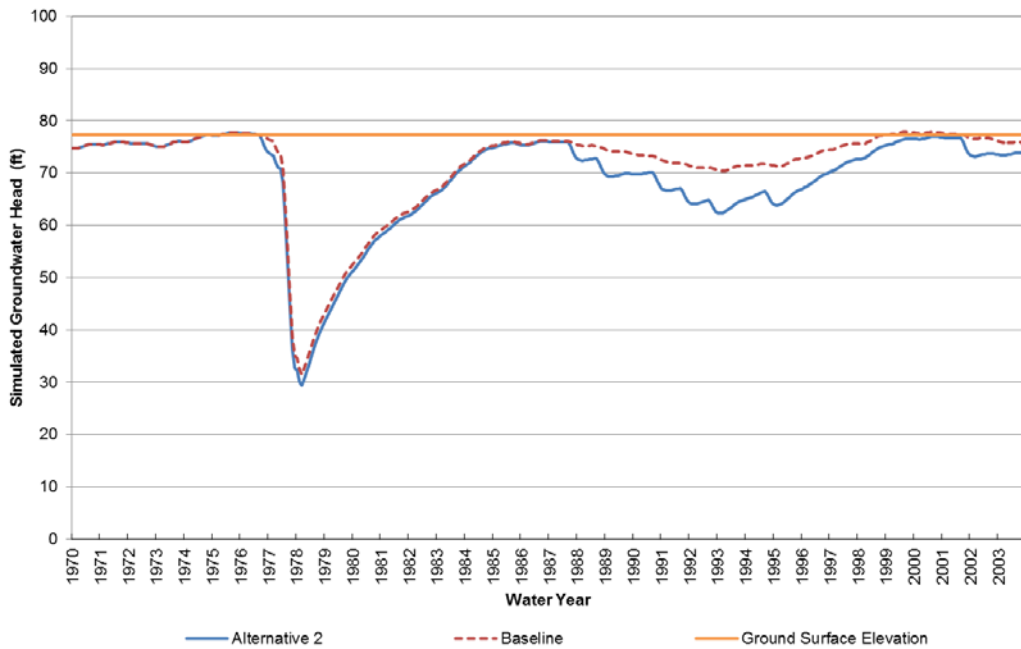


**Figure 3.3-33. Simulated Groundwater Head (Approximately 690-910 feet bgs) at Location 21**

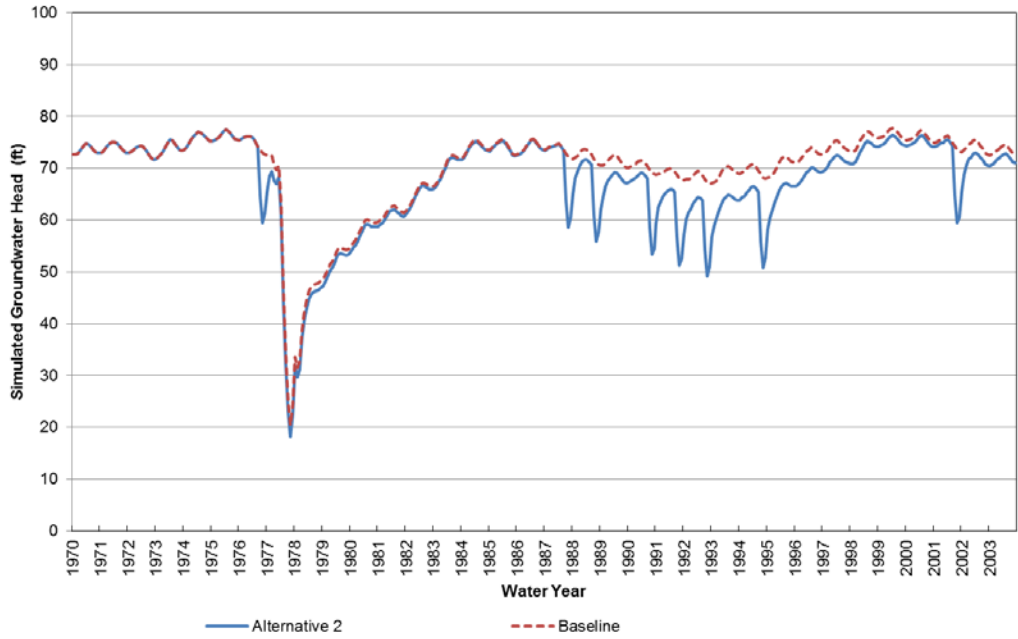
Long-Term Water Transfers  
Public Draft EIS/EIR



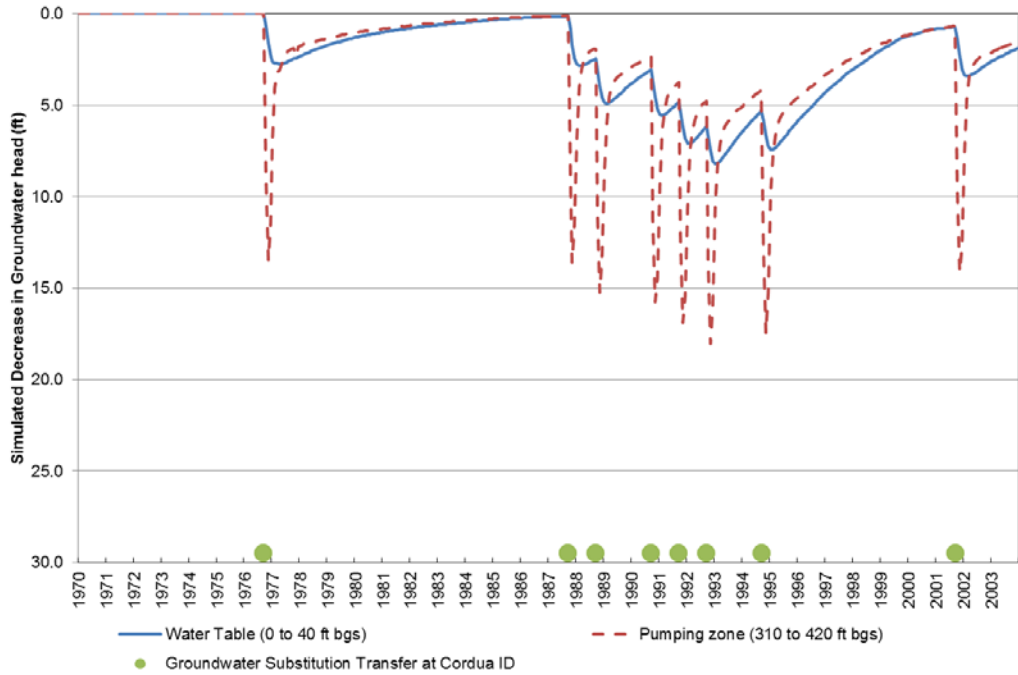
**Figure 3.3-34. Simulated Change in Groundwater Head at Location 21**



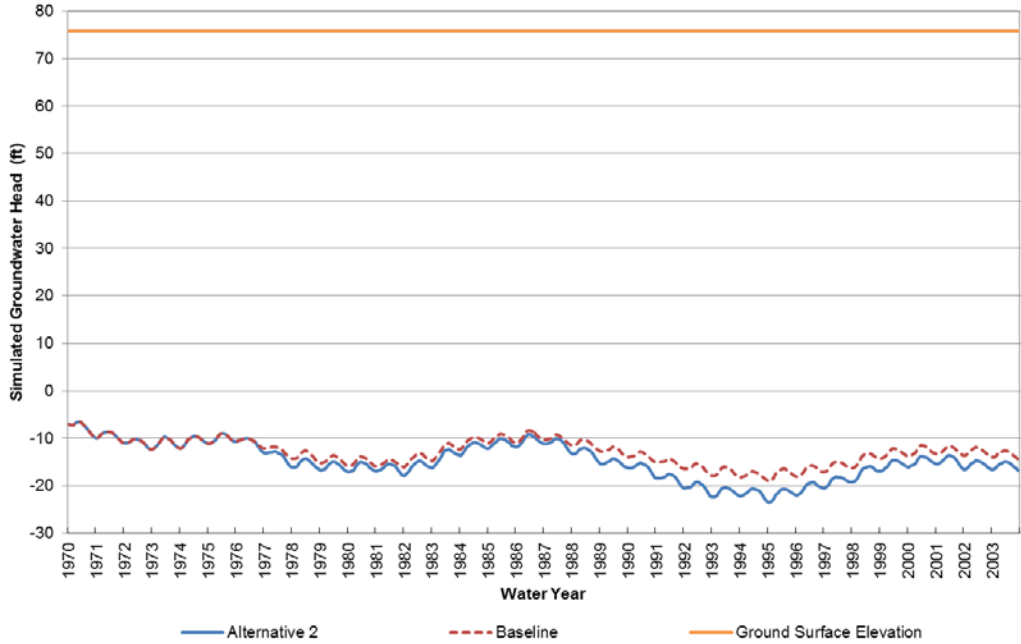
**Figure 3.3-35. Simulated Groundwater Table Elevation (Approximately 0 to 40 feet bgs) at Location 14**



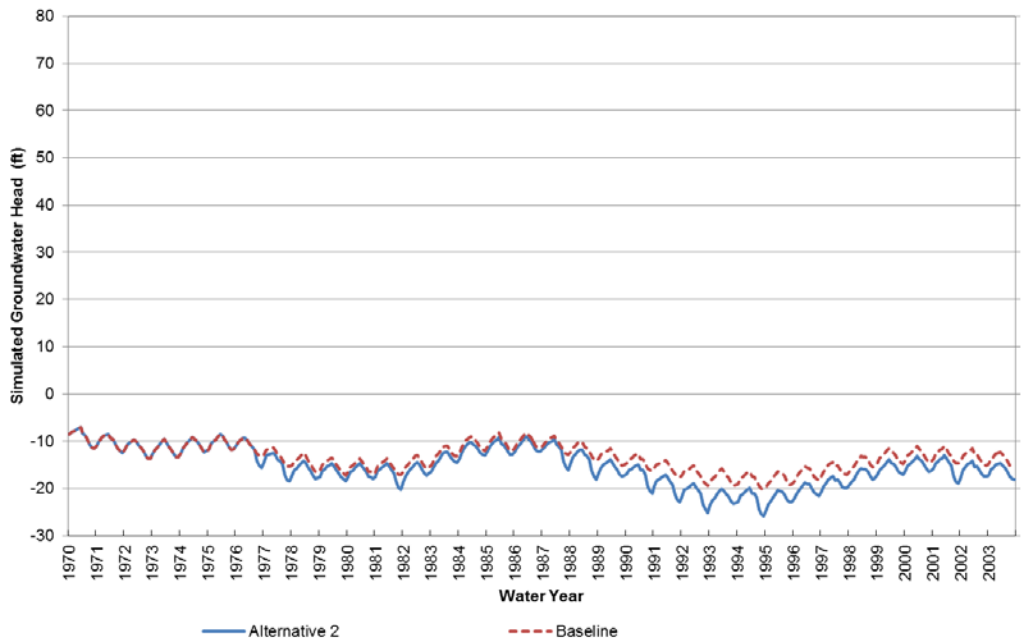
**Figure 3.3-36. Simulated Groundwater Head (Approximately 310 to 420 feet bgs) at Location 14**



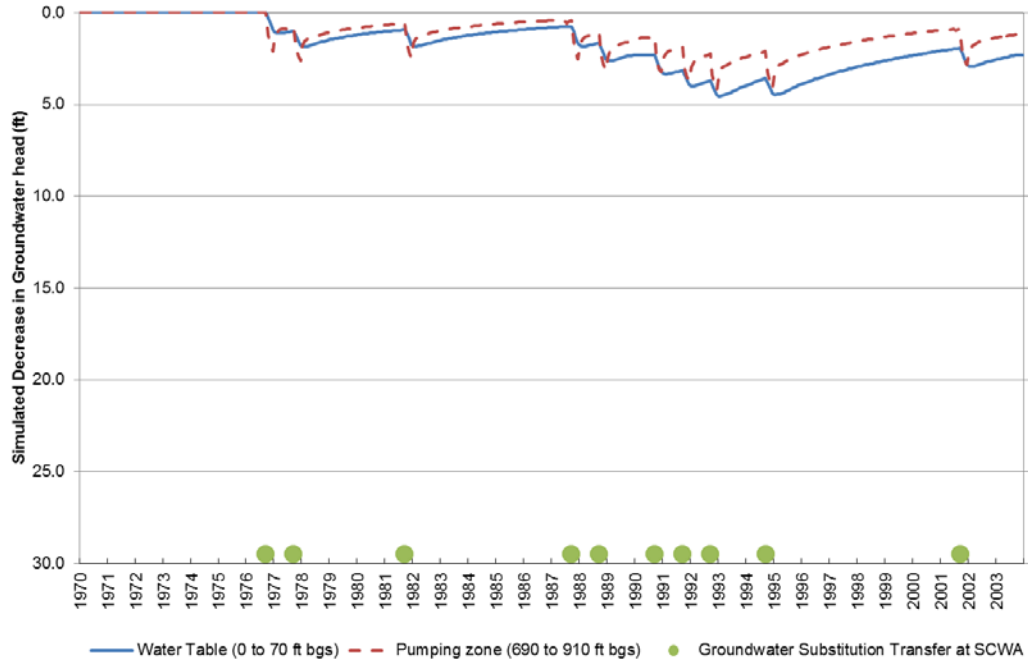
**Figure 3.3-37. Simulated change in Groundwater Head at Location 14**



**Figure 3.3-38. Simulated Groundwater Table Elevation (Approximately 0 to 70 feet bgs) at Location 31**



**Figure 3.3-39. Simulated Groundwater Head (Approximately 200 to 330 feet bgs) at Location 31**



**Figure 3.3-40. Simulated change in Groundwater Head at Location 31**

As shown in Figure 3.3-26 through Figure 3.3-31, the maximum groundwater level declines resulting from substitution transfers within the Sacramento Valley Groundwater Basin range widely depending on the distance from the transfer groundwater pumping. The maximum groundwater level declines tend to be focused in the areas immediately surrounding the proposed groundwater substitution production wells. Seasonal groundwater level declines would be greater than the typical fluctuation when substitution pumping is included, indicating the potential for adverse effects. The potential for adverse drawdown effects would increase as the amount of extracted water increased. The potential for adverse effects would be higher during dry years, when baseline fluctuations would already be large and groundwater levels would likely be lower than normal.

Table 3.3-4 shows the number and average depth of domestic and irrigation wells within the areas of potential transferring agencies in the Sacramento Valley Groundwater Basin. On average, most wells in these areas are deeper than the levels that would result after potential drawdowns caused by groundwater substitution pumping; therefore, groundwater pumping would not cause them to go dry. However, groundwater level declines at the shallow wells could reduce the yield of these wells.

Groundwater substitution transfers could result in groundwater declines in excess of seasonal variation and these effects on non-transferring wells could be significant. To reduce these effects, the Mitigation Measure GW-1 (Section 3.3.4.1) specifies that transferring agencies establish monitoring and mitigation

programs for groundwater substitution transfers. The programs would monitor groundwater level fluctuations within the local pumping area and if effects were reported or occurred, the participating seller agencies in the Sacramento basin would compensate for effects or reduce pumping until the groundwater basin recharges. Mitigation Measure GW-1 would reduce the impacts to less than significant.

**Table 3.3-4. Well Depths in the Sacramento Valley Groundwater Basin**

Groundwater Subbasin	Domestic Wells Depth Range (ft bgs)	Domestic Wells Average Depth (ft bgs)	Municipal/Irrigation Wells Depth Range (ft bgs)	Municipal/Irrigation Wells Average Depth (ft bgs)
Colusa	11 – 870	155	20 – 1,340	368
East Butte	25 – 639	101	35 - 983	285
North American	50 – 1,750	190	77 – 1,025	396
Solano	38 – 1,070	239	62 – 2,275	510
South American	87 – 575	247	41 – 1,000	372
Sutter	35 – 320	121	60 - 672	205
West Butte	15 – 680	136	40 - 920	321
Yolo	40 – 600	230	50 – 1,500	400

Source- DWR 2003

Key:

bgs = below ground surface

ft = feet

*Groundwater extraction for groundwater substitution transfers would decrease groundwater levels, increasing the potential for subsidence.* Most areas of the Sacramento Valley Groundwater Basin have not experienced land subsidence that has caused impacts to the overlying land. As shown in Figure 3.3-11, portions of Colusa and Yolo counties have experienced subsidence and subsidence has also been measured at Conaway Ranch (Yolo County). Table 3.3-5 provides the simulated change in groundwater level due to transfer pumping at eight monitoring well locations shown in Figure 3.3-8 and Figure 3.3-9. The historic low groundwater level elevations were determined based on the monitored groundwater level data shown in Figure 3.3-8 and Figure 3.3-9. Based on the calculated historic low, groundwater levels since 2008 and the simulated change in groundwater level due to transfer pumping, there is potential for land subsidence at two of the eight monitoring wells (22N01E28J003M and 19N02W13J001M) presented in Table 3.3-5. Additionally, the change in groundwater elevation at Conaway Ranch would be between the Proposed Action and the No Action Alternative ranges between 2.5-12 feet (Appendix E, Location 30 hydrograph). Therefore, the effect of potential land subsidence in the Seller Service Area could be significant. To reduce these effects, the Mitigation Measure GW-1 (Section 3.3.4.1) specifies that transferring agencies establish monitoring and mitigation programs for

groundwater substitution transfers. This program will include periodic determination of land surface elevation in strategic locations throughout the transfer area. Mitigation Measure GW-1 would reduce the impacts to less than significant.

**Table 3.3-5. Simulated Change in Groundwater Level at Monitoring Well Locations**

Monitoring Well	Historic Low (preconsolidated heads) <sup>1</sup>	GWL in the last 7 years (2008 to Present) <sup>1</sup>	Maximum change in GWL under Proposed Action <sup>2</sup>	Average change in GWL under Proposed Action <sup>2</sup>
20N02E28N001M	110.5	116.8 - 112.1	-0.08	-0.03
22N01E28J003M*	119.8	145.2 - 119.8	-0.20	-0.07
19N04W12E001M	61.0	161.1 - 129.3	-0.90	-0.22
19N02W13J001M*	71.2	81.4 - 71.2	-0.34	-0.09
16N02W25B002M	25.7	45 - 32.4	-1.08	-0.39
11N02E20K004M	-22.6	33.2 - 20	-2.49	-0.69
12N05E12Q001M	20.5	NA	-1.56	-0.66
11N05E32R001M	-70.8	NA	-5.65	-2.03

Source: DWR 2010b

Note: NA= Data not available for period of record

\* Wells with potential for land subsidence based on data presented in table

<sup>1</sup> Based on data presented in **Figure 3.3-8** and

Figure 3.3-9

<sup>2</sup> Based on SACFEM2013 modeling results

*Groundwater extraction for groundwater substitution transfers could cause migration of reduced quality water, agricultural use of reduced quality water, or the distribution of reduced quality water.*

### **Migration of Reduced Quality Groundwater**

Inducing the movement or migration of reduced quality water into previously unaffected areas through groundwater pumping is not likely to be a concern unless groundwater levels and/or flow patterns are substantially altered for a long period of time. Groundwater extraction under the Proposed Action would be limited to short-term withdrawals during the irrigation season. Consequently, effects from the migration of reduced groundwater quality would be less than significant.

### **On-Farm Use of Reduced Quality Groundwater**

Potential sellers that may participate in groundwater substitution transfers could experience changes in water quality as they switch from surface water to groundwater. Groundwater quality is good for most agricultural and municipal uses throughout the Sacramento Valley Groundwater Basin; therefore, potential regional impacts would be minimal and this impact would be less than significant.

### **Distribution of Reduced Quality Groundwater**

Groundwater extracted could be of reduced quality relative to the surface water supply deliveries the seller districts normally receive; however, groundwater quality in the area is normally adequate for agricultural purposes. Distribution of groundwater for municipal supply is subject to groundwater quality monitoring and quality limits prior to distribution to customers. Therefore, potential impacts to the distribution of groundwater would be minimal and this impact would be less than significant.

*Water transfers via cropland idling could decrease applied water recharge to the local groundwater system underlying the barren (idled) fields that could result in decline in groundwater levels.* Table 3.3-6 shows potential maximum water transferred via cropland idling.

**Table 3.3-6. Maximum Annual Water Transfer from Cropland Idling under the Proposed Action**

<b>County</b>	<b>Rice (AF)</b>	<b>Alfalfa (AF)</b>	<b>Corn (AF)</b>	<b>Tomatoes (AF)</b>	<b>Total (AF)</b>
Colusa, Glenn, Yolo	40,700	1,400	400	400	42,900
Butte, Sutter	10,770	600	800	400	12,570
Solano	-	3,000	1,500	-	4,500
Total	51,470	5,000	2,700	800	59,970

Cropland idling would eliminate the applied water on participating fields within the Seller Service Area. A portion of that applied water percolates into the groundwater aquifer; therefore, reducing applied water would result in a loss of recharge to the Sacramento Valley Groundwater Basin. Because only a small portion of the applied (i.e., transferred) water would have percolated to the groundwater table, the reduction in recharge is expected to be well below the 59,970 AF listed in Table 3.3-6. This reduction in recharge would also be relatively small when compared to the total of amount of water that recharges the Sacramento Valley Groundwater Basin. A large portion of the total recharge to the basin occurs through precipitation and runoff over the spring and winter months.

Of the participating crops listed in Table 3.3-6, rice represents the greatest amount of land idled for transfers. Rice farming practices include a constant supply of irrigation water that remains on rice fields during the growing season. The land used for rice production, however, is typically underlain by soils with low permeability (such as clay). A substantial portion of the water applied to rice fields does not percolate to the underlying aquifer because of the underlying soils, but rather discharges to the farmer's surface drainage system.

A reduction in applied water recharge because of cropland idling could have effects on groundwater recharge and levels; however, this action would not be likely to substantially reduce the amount of recharge for the basin.



Consequently, the potential lowering of groundwater levels due to a reduction in groundwater recharge as a result of cropland idling would be less than significant.

*Water Transfers via cropland idling may cause groundwater level declines that lead to permanent land subsidence or changes in groundwater quality. As discussed earlier in the section, cropland idling would not be likely to substantially lower groundwater levels in the basin causing land subsidence or changing groundwater quality. Consequently, subsidence and groundwater quality changes because of a reduction in groundwater recharge as a result of cropland idling would be less than significant.*

#### **3.3.2.4.3 Buyer Service Area**

*Decreased groundwater pumping in the Buyer Service Area may result in temporary rise in groundwater levels in the Buyer Service Area. The Proposed Action would result in a reduced use of groundwater resources during periods of shortage by supplementing water supply with transferred water. Therefore, the impact of the Proposed Action on groundwater levels in the Buyer Service Area would be beneficial.*

*Decreased groundwater pumping in the Buyer Service Area would cause a decrease in water level declines thus, decreasing permanent land subsidence. The Proposed Action would result in a reduced use of groundwater resources during periods of shortage by supplementing water supply with transferred water. Therefore, the impact of the Proposed Action on potential land subsidence in the Buyer Service Area would be beneficial.*

*Changes in groundwater levels, or in the prevailing groundwater flow regime, could cause a change in groundwater quality. The Proposed Action would result in a reduced use of groundwater resources during periods of shortage by supplementing water supply with transferred water. Therefore, the impact of the Proposed Action on potential land subsidence in the Buyer Service Area would be beneficial.*

#### **3.3.2.5 Alternative 3: No Cropland Modifications**

Alternative 3 involves transfers through groundwater substitution and no cropland idling. The impacts associated with the groundwater substitution transfers would be the same as the Proposed Action.

#### **3.3.2.6 Alternative 4: No Groundwater Substitution**

Alternative 4 involves transfers through cropland idling and no groundwater substitution. The impacts associated with the cropland idling transfers would be the same as the Proposed Action.

### 3.3.3 Comparative Analysis of Alternatives

Table 3.3-7 summarizes the effects of each of the action alternatives. The following text supplements the table by describing the magnitude of the effects under the action alternatives and No Action/No Project Alternative.

**Table 3.3-7. Comparison of Alternatives**

Potential Impact	Alternative(s)	Significance	Proposed Mitigation	Significance after Mitigation
Groundwater pumping within the Buyer Service Area in response to shortages could cause reduction in groundwater levels.	1	NCFEC	None	NCFEC
Groundwater pumping within the Buyer Service Area in response to shortages could cause subsidence.	1	NCFEC	None	NCFEC
Groundwater pumping within the Buyer Service Area in response to shortages could cause changes to groundwater quality.	1	NCFEC	None	NCFEC
Land idling that temporarily converts cropland to bare fields in response to shortages in the Buyer Service Area could cause reduction in groundwater levels due to decreased applied water recharge.	1	NCFEC	None	NCFEC
Groundwater substitution transfers could cause a reduction in groundwater levels in the Seller Service Area.	2, 3	S	GW-1	LTS
Groundwater substitution transfers could cause subsidence in the Seller Service Area.	2, 3	S	GW-1	LTS
Groundwater substitution transfers could cause changes to groundwater quality in the Seller Service Area.	2, 3	LTS	None	LTS
Cropland idling transfers could cause reduction in groundwater levels in the Seller Service Area due to decreased applied water recharge.	2, 4	LTS	None	LTS
Water transfers could reduce groundwater pumping during shortages in the Buyer Service Area, which could increase groundwater levels, decrease current rate of subsidence, and improve groundwater quality.	2, 3, 4	Beneficial	None	Beneficial

Key:

NCFEC: No change from existing conditions

S: Significant

LTS: Less than Significant

### **3.3.3.1 No Action/No Project Alternative**

There would be no changes to groundwater levels, quality, or land subsidence in the Seller Service Area relative to existing conditions. In the Buyer Service Area, increased land idling and groundwater substitution transfers could occur in response to CVP shortages, which could cause a reduction in groundwater levels, a change in groundwater quality or subsidence. However, these actions to address shortages are already underway, and the No Action/No Project Alternative would not represent a change from existing conditions.

### **3.3.3.2 Alternative 2: Full Range of Transfers (Proposed Action)**

Groundwater substitution transfers under the Proposed Action could decrease groundwater levels, potentially affecting non-transferring wells near participating substitution wells. Declining groundwater levels could also affect land subsidence and groundwater quality; however, these effects would be less than significant. Cropland idling transfers under the Proposed Action could reduce percolation to groundwater, but the reduction would be small because rice (the main crop proposed for idling) is typically grown on soils with low permeability. Potential effects on groundwater resources in the Seller Service Area under Proposed Action would be greater than the No Action/No Project Alternative. These effects could be reduced by Mitigation Measure GW-1 (Section 3.3.4.1).

In the Buyer Service Area, transfers would reduce the need to pump groundwater during shortages and could result in beneficial effects to groundwater levels, land subsidence, and groundwater quality.

### **3.3.3.3 Alternative 3: No Cropland Modification**

The No Cropland Modification Alternative does not include cropland idling but would include groundwater substitution transfers. The effects in the Seller Service Area from Alternative 3 would be the same as those associated with groundwater substitution in the Proposed Action. These effects could be reduced by Mitigation Measure GW-1. Similar to the Proposed Action, transfers could improve groundwater levels, land subsidence, and groundwater quality in the Buyer Service Area by reducing groundwater pumping during shortages.

### **3.3.3.4 Alternative 4: No Groundwater Substitution**

The No Groundwater Substitution does not include groundwater substitution transfers, but cropland idling transfers have the potential to reduce recharge to the groundwater basin. However, the reduction in percolation would be less than significant because rice is the primary crop and grown on soils with low permeability. Similar to the Proposed Action, transfers could increase groundwater levels, eliminate or minimize land subsidence, and improve groundwater quality in the Buyer Service Area by reducing groundwater pumping during shortages.

### 3.3.4 Environmental Commitments/Mitigation Measures

#### 3.3.4.1 Mitigation Measure GW-1: Monitoring Program and Mitigation Plans

The *DRAFT Technical Information for Preparing Water Transfer Proposals* (Reclamation and DWR 2013) and Addendum (Reclamation and DWR 2014) provide guidance for the development of proposals for groundwater substitution water transfers. The technical information and addendum inform the development of the monitoring and mitigation program for this project, which will be updated as appropriate based on the most current version of the technical paper each year of this long-term project.

The objectives of the monitoring and mitigation plan are: to mitigate adverse environmental effects that occur; to minimize potential effects to other legal users of water; to provide a process for review and response to reported effects to non-transferring parties; and to assure that a local mitigation strategy is in place prior to the groundwater transfer.

Each entity participating in a groundwater substitution transfer will be required to confirm that the proposed groundwater pumping will be compatible with state and local regulations and GMPs. Reclamation's transfer approval process and groundwater mitigation measures set forth a framework that is designed to avoid and minimize adverse groundwater effects. Reclamation will verify that sellers adopt and implement these mitigation measures to minimize the potential for adverse effects related to groundwater extraction.

##### 3.3.4.1.1 Well Review Process

Potential sellers will be required to submit well data for Reclamation and, where appropriate, DWR review, as part of the transfer approval process. Required information will be detailed in the most current version of the *DRAFT Technical Information for Preparing Water Transfer Proposals*.

##### 3.3.4.1.2 Monitoring Program

Potential sellers will be required to complete and implement a monitoring program subject to Reclamation's approval that must, at a minimum, include the following components:

- *Monitoring Well Network.* The monitoring program will incorporate a sufficient number of monitoring wells to accurately characterize groundwater levels and response in the area before, during, and after transfer pumping takes place.
- *Groundwater Pumping Measurements.* All wells pumping to replace surface water designated for transfer shall be configured with a permanent instantaneous and totalizing flow meter capable of accurately measuring well discharge rates and volumes. Flow meter readings will be recorded just prior to initiation of pumping and at

designated times, but no less than monthly and as close as practical to the last day of the month, throughout the duration of the transfer.

- *Groundwater Levels.* Sellers will collect measurements of groundwater levels in both participating transfer wells and monitoring wells. Groundwater level monitoring will include measurements before, during and after transfer-related pumping. The water transfer proponent will measure groundwater levels as follows:
  - Prior to transfer: Groundwater levels will be measured monthly from March in the year of the proposed transfer until the start of the transfer (where possible).
  - Start of transfer: Groundwater levels will be measured on the same day that the transfer begins, prior to the pump being turned on.
  - During transfer: Groundwater levels will be measured weekly throughout the transfer period.
  - Post-transfer: Groundwater levels will be measured weekly for one month after the end of transfer pumping, after which groundwater levels will be measured monthly through March of the year following the transfer.
- *Groundwater Quality.* For municipal sellers, the comprehensive water quality testing requirements of Title 22 should be sufficient for the water transfer monitoring program. Agricultural sellers shall measure specific conductance in samples from each participating production well. Samples shall be collected when the seller first initiates pumping, monthly during the transfer period, and at the termination of transfer pumping.
- *Land Subsidence.* Subsidence monitoring will include determination of land surface elevation in strategic (determined by Reclamation) locations throughout the transfer area at the beginning and end of each transfer year. If the land surface elevation survey indicates an elevation decrease, then the area will require more extensive monitoring which could include (1) extensometer monitoring (2) continuous GPS monitoring (3) extensive land-elevation benchmark surveys conducted by a licensed surveyor. Areas with documented historic land subsidence and higher susceptibility to land subsidence will also require more extensive monitoring.
- *Coordination Plan.* The monitoring program will include a plan to coordinate the collection and organization of monitoring data, and communication with the well operators and other decision makers.

- *Evaluation and Reporting.* The proposed monitoring program will describe the method of reporting monitoring data. At a minimum, sellers will provide data summary tables to Reclamation, both during and after transfer-related groundwater pumping. Post-program reporting will continue through March of the year following the transfer. Water transfer proponents will provide a final summary report to Reclamation evaluating the effects of the water transfer. The final report will identify transfer-related impacts on groundwater and surface water (both during and after pumping), and the extent and significance, if any, of impacts on local groundwater users. It should include groundwater elevation contour maps for the area in which transfer operations are located, showing pre-transfer groundwater elevations, groundwater elevations at the end of the transfer, and recovered groundwater elevations in March of the year following the transfer.

#### **3.3.4.1.3 Mitigation Plan**

Potential sellers will also be required to complete and implement a mitigation plan. If the seller's monitoring efforts indicate that the operation of wells for groundwater substitution pumping are causing substantial adverse impacts, the seller will be responsible for mitigating any significant environmental impacts that occur. Mitigation actions must be implemented to reduce impacts to a less than significant level and could include:

- Curtailment of pumping until natural recharge corrects the issue.
- Lowering of pumping bowls in non-transferring wells affected by transfer pumping.
- Reimbursement for significant increases in pumping costs due to the additional groundwater pumping to support the transfer.
- Curtailment of pumping until water levels raise above historic lows if non-reversible subsidence is detected (based on local data to identify elastic versus inelastic subsidence).
- Reimbursement for modifications to infrastructure that may be affected by non-reversible subsidence.
- Other actions as appropriate.

To ensure that mitigation plans will be feasible, effective, and tailored to local conditions, the plan must include the following elements:

- A procedure for the seller to receive reports of purported environmental or effects to non-transferring parties;
- A procedure for investigating any reported effect;

- Development of mitigation options, in cooperation with the affected parties, for legitimate significant effects; and
- Assurances that adequate financial resources are available to cover reasonably anticipated mitigation needs.

The purpose of Mitigation Measure GW-1 is to monitor groundwater levels during transfers to avoid potential effects. If any effects occur despite the monitoring efforts, the mitigation plan will describe how to address those effects. The objectives of this process are to: (1) mitigate adverse environmental effects that occur; (2) minimize potential effects to other legal users of water; (3) provide a process for review and response to reported effects; and (4) assure that a local mitigation strategy is in place prior to the groundwater transfer.

Each potential seller will be required to confirm that the proposed groundwater pumping will be compatible with state and local regulations and GMPs. Reclamation's transfer approval process and groundwater mitigation measures set forth a framework that is designed to avoid and minimize adverse groundwater effects. Reclamation will verify that sellers adopt and implement these measures to minimize the potential for adverse effects related to groundwater extraction.

### **3.3.5 Potentially Significant Unavoidable Impacts**

None of the alternatives would result in potentially significant unavoidable impacts after mitigation.

### **3.3.6 Cumulative Effects**

The timeframe for the groundwater resources cumulative effects analysis extends from 2015 through 2024, a ten year period. The cumulative effects area of analysis for groundwater resources is the same as shown in Figure 3.3-1 above.

The projects considered for the groundwater resources cumulative condition are the SWP water transfers, Northern Sacramento Valley Integrated Regional Water Management Plan (NSV IRWMP), Tuscan Aquifer Investigation, and CVP M&I Water Shortage Policy (WSP), described in more detail in Section 4.3 in Chapter 4. SWP transfers could involve groundwater substitution transfers in the Seller Service Area and, therefore, could affect groundwater resources. The NSV IRWMP may also involve groundwater substitution transfers in the Seller Service Area. The WSP could reduce agricultural water deliveries and increase land idling in the Buyer Service Area. Effects of the

WSP in the Seller Service Area would be minor as agricultural water supplies would not substantially change relative to existing conditions.

The following sections describe potential groundwater resources cumulative effects for each of the proposed alternatives.

### **3.3.6.1 Alternative 2: Full Range of Transfers (Proposed Action)**

#### **3.3.6.1.1 Seller Service Area**

*Groundwater substitution pumping and cropland idling transfers in the Seller Service Area under the Proposed Action in combination with other cumulative projects would contribute to groundwater level declines in the region.* SWP transfers would include groundwater substitution, but the quantities of groundwater substitution transfers are very small (approximately 6,800 AF) in relation to overall transfers from the Seller Service Area. Some SWP groundwater substitution transfers could occur in Sutter County, which is included in the area of analysis for the Proposed Action. It is possible that the SWP transfers would compound the declines in groundwater levels in Sutter County.

The NSV IRWMP is a project that aims to provide a regional perspective to planning for water use in the northern Sacramento Valley, including Butte, Colusa, Glenn, Shasta, Sutter, and Tehama Counties. The plan is still under development; however, it is expected that the plan will help to provide management objectives that would be protective of the groundwater resources in the northern Sacramento Valley.

The Tuscan Aquifer Investigation project, conducted by the Butte County Department of Water and Resource Conservation, included numerous field data collection activities to allow for a more complete understanding of the Tuscan Aquifer. This project included the drilling of groundwater monitoring wells and the gaging of several streams in the Sierra Nevada foothills. Aquifer performance testing (i.e., pumping tests) was also performed at three existing production wells. The pumping associated with this project has been completed and would not contribute to cumulative effects. Information collection was primarily within Butte County, but the information about the Tuscan Aquifer could provide useful information about aquifer properties that would be useful in the other counties that are over the same aquifer (Glenn, Colusa, and Tehama Counties).

The Proposed Action and these other projects in the basin could have significant cumulative effects on groundwater resources. The groundwater substitution pumping in the Proposed Action could result in significant effects to groundwater resources; however, implementation of Mitigation Measure GW-1 will reduce impacts from long-term transfers to less than significant. Therefore, with implementation of Mitigation Measure GW-1, the Proposed Action's



incremental contribution to groundwater resources impacts would not be cumulatively considerable.

*The increased pumping under the Proposed Action in combination with other cumulative projects could cause land subsidence.* The groundwater substitution pumping associated with the SWP transfers would occur in an area that is historically not subject to significant land subsidence. In the overall area of analysis, land subsidence is occurring in several areas, as described in Section 3.3.1.3.2. This subsidence may be part of normal cropping cycles, when the soils below agricultural lands undergo shrinking and swelling. This subsidence would not likely result in substantial risk to life or property; however, the existing subsidence along with future increases in groundwater pumping in the cumulative condition could cause potentially significant cumulative effects. The impacts of the Proposed Action would be reduced through Mitigation Measure GW-1 (Section 3.3.4.1) to less than significant. Therefore, with implementation of Mitigation Measure GW-1, the Proposed Action's incremental contribution to subsidence impacts would not be cumulatively considerable.

*Groundwater levels in the Seller Service Area may change under the Proposed Action in combination with other cumulative projects and cause the movement or mobilization of poorer quality groundwater into existing wells.* SWP transfers and the Tuscan Aquifer Investigation Project would increase pumping within (or near) the Seller Service Area. However, as discussed in the Proposed Action, most of the Seller Service Area has high quality groundwater and changes in groundwater flow patterns should not cause migration of poor quality groundwater. Therefore, the Proposed Action in combination with other cumulative actions would not result in a cumulative significant impact related to groundwater quality.

#### **3.3.6.1.2 Buyer Service Area**

*The Proposed Action in combination with other cumulative past, present, and future projects could affect groundwater levels, land subsidence, and groundwater quality in the Buyer Service Area.* As described in Section 3.3.1.3.2, groundwater pumping in the San Joaquin Valley has created some groundwater depressions over time. Additionally, some areas of the region have poor quality groundwater and have experienced land subsidence. The long-term historic pumping in the basin has contributed to locally significant cumulative impacts. The Proposed Action, however, would partially offset this cumulative impact by offsetting groundwater pumping during shortages. Therefore, the Proposed Action's incremental contribution to potentially significant cumulative groundwater impacts would not be cumulatively considerable.

#### **3.3.6.2 Alternative 3: No Cropland Modification**

The cumulative impacts of Alternative 3 would be the same as described for groundwater substitution in the Proposed Action in the Seller Service Area.

Additionally, the cumulative effects of Alternative 3 in the Buyer Service Area would be the same as the Proposed Action.

### 3.3.6.3 Alternative 4: No Groundwater Substitution

Alternative 4 would not include groundwater substitution transfers; therefore, the contribution of this alternative to the groundwater cumulative condition would not be cumulatively considerable. The cumulative effects of Alternative 4 in the Buyer Service Area would be the same as the Proposed Action.

## 3.3.7 References

- Anderson-Cottonwood Irrigation District. 2013. Initial Study and Proposed Negative Declaration for Anderson-Cottonwood Irrigation District's 2013 Water Transfer Program. Available at: <http://www.andersoncottonwoodirrigationdistrict.org/library.html> or at: [http://www.usbr.gov/mp/nepa/nepa\\_projdetails.cfm?Project\\_ID=13310](http://www.usbr.gov/mp/nepa/nepa_projdetails.cfm?Project_ID=13310)
- Belitz, K., and Landon, M.K. 2010. Groundwater Quality in the Central Eastside San Joaquin Valley, California: U.S. Geological Survey Fact Sheet 2010-3001, 4 p. Available at: <http://pubs.usgs.gov/fs/2010/3001/>
- Bennett, G.L., V, Fram, M.S., and Belitz, Kenneth. 2011a. Groundwater quality in the Middle Sacramento Valley, California: U.S. Geological Survey Fact Sheet 2011-3005, 4 p. Available at: <http://pubs.usgs.gov/fs/2011/3005/>
- \_\_\_\_\_. 2011b. Groundwater quality in the Southern Sacramento Valley, California: U.S. Geological Survey Fact Sheet 2011-3006, 4 p. Available at: <http://pubs.usgs.gov/fs/2011/3006/pdf/fs20113006.pdf>
- Bennett V, G.L., and Belitz, K. 2010. Groundwater quality in the Northern San Joaquin Valley, California: U.S. Geological Survey Fact Sheet 2010-3079, 4 p. Available at: <http://pubs.usgs.gov/fs/2010/3079/>
- Bertoldi, G. L. 1991. Groundwater in the Central Valley, California – A Summary Report, Regional Aquifer-System Analysis-Central Valley, California: U.S. Geological Survey, Professional Paper 1401-A. Available at: <http://pubs.usgs.gov/pp/1401a/report.pdf>
- Burton, C.A., and Belitz, Kenneth. 2012. Groundwater Quality in the Southeast San Joaquin Valley, California: U.S. Geological Survey Fact Sheet 2011-3151, 4 p. Available at: <http://pubs.usgs.gov/fs/2011/3151/>
- CALFED. 2000. Final Programmatic Environmental Impact Statement/Environmental Impact Report. pp. 5.4-1 to 5.4-14. Available at: [http://calwater.ca.gov/calfed/library/Archive\\_EIS.html](http://calwater.ca.gov/calfed/library/Archive_EIS.html)

- CH2M Hill. 1997. Final Report Shasta County Water Resources Management Plan Phase 1 Report Current and Future Water Needs. Prepared for Redding Area Water Council and Other Shasta County Water Users. October. *as cited in* CH2M Hill. 2003. Final Report Redding Basin Water Resources Management Plan Phase 2C Report. Prepared for Redding Area Water Council. August. Available at:  
[http://www.co.shasta.ca.us/docs/Public\\_Works/docs/wag-Enc2.pdf?sfvrsn=0](http://www.co.shasta.ca.us/docs/Public_Works/docs/wag-Enc2.pdf?sfvrsn=0)
- \_\_\_\_\_. 2003. Final Report Redding Basin Water Resources Management Plan Phase 2C Report. Prepared for Redding Area Water Council. August. Available at: [http://www.co.shasta.ca.us/docs/Public\\_Works/docs/wag-Enc2.pdf?sfvrsn=0](http://www.co.shasta.ca.us/docs/Public_Works/docs/wag-Enc2.pdf?sfvrsn=0)
- City of Chico. 2006. City of Chico Municipal Service Review, August. Available at:  
[http://www.chico.ca.us/document\\_library/departments/planning\\_department/Municipal\\_Service\\_Review\\_\(Final\)\\_October\\_2006/Sec\\_41\\_Water.pdf](http://www.chico.ca.us/document_library/departments/planning_department/Municipal_Service_Review_(Final)_October_2006/Sec_41_Water.pdf)
- Colusa County. 1999. Chapter 43 Groundwater Management . Colusa County. Sec 43-1 –43-17. Available at:  
<http://www.codepublishing.com/ca/colusacounty/html/ColusaCounty43.html>
- Contra Costa WD. 2011. Urban Water Management Plan. June. Available at:  
[http://www.water.ca.gov/urbanwatermanagement/2010uwmps/Contra%20Costa%20Water%20District/CCWD\\_FINAL%202010%20UWMP.pdf](http://www.water.ca.gov/urbanwatermanagement/2010uwmps/Contra%20Costa%20Water%20District/CCWD_FINAL%202010%20UWMP.pdf)
- DWR. 1967. Evaluation of groundwater Resources South Bay Appendix A: Geology Bulletin 118-1, August. Available at:  
<http://www.water.ca.gov/publications/browse.cfm?display=topic&pub=120,125,226,9829>
- \_\_\_\_\_. 1975. Evaluation of groundwater Resources South San Francisco Bay Volume III Northern Santa Clara County Area: Bulletin 118-1, December. Available at:  
<http://www.water.ca.gov/publications/browse.cfm?display=topic&pub=120,125,226,9829>
- \_\_\_\_\_. 1978. Evaluation of groundwater Resources: Sacramento Valley: Bulletin 118-6, August.  
<http://www.water.ca.gov/groundwater/bulletin118/series.cfm>
- \_\_\_\_\_. 1981. Evaluation of groundwater Resources South San Francisco Bay Volume IV South Santa Clara County Area: Bulletin 118-1, May.

Available at:

<http://www.water.ca.gov/publications/browse.cfm?display=topic&pub=120,125,226,9829>

\_\_\_\_\_. 2003. California's Groundwater: Bulletin 118, Update 2003. October.

Available at:

[http://www.water.ca.gov/pubs/groundwater/bulletin\\_118/california's\\_groundwater\\_bulletin\\_118\\_update\\_2003/bulletin118\\_entire.pdf](http://www.water.ca.gov/pubs/groundwater/bulletin_118/california's_groundwater_bulletin_118_update_2003/bulletin118_entire.pdf)

\_\_\_\_\_. 2008.

<http://www.water.ca.gov/groundwater/docs/WhatIsLandSubsidence.pdf>.

Accessed July 7, 2014.

\_\_\_\_\_. 2010a. Integrated Water Resources Information System (IWRIS).

Available at: <http://www.water.ca.gov/iwrisc/> Accessed July, 2014.

\_\_\_\_\_. 2010b. Water Data Library. Available at:

<http://www.water.ca.gov/waterdatalibrary/index.cfm> Accessed July, 2014.

\_\_\_\_\_. 2011.

[http://www.water.ca.gov/groundwater/data\\_and\\_monitoring/south\\_central\\_region/images/groundwater/sjv2010spr\\_unc\\_elev.pdf](http://www.water.ca.gov/groundwater/data_and_monitoring/south_central_region/images/groundwater/sjv2010spr_unc_elev.pdf)

\_\_\_\_\_. 2013.

[http://www.water.ca.gov/groundwater/data\\_and\\_monitoring/northern\\_region/GroundwaterLevel/SacValGWContours/100t400\\_Wells\\_Spring-2013.pdf](http://www.water.ca.gov/groundwater/data_and_monitoring/northern_region/GroundwaterLevel/SacValGWContours/100t400_Wells_Spring-2013.pdf)

\_\_\_\_\_. 2014a. Public Update for Drought Response Groundwater Basins with Potential Water Shortages and Gaps in Groundwater Monitoring, April.

Available at:

[http://www.water.ca.gov/waterconditions/docs/Drought\\_Response-Groundwater\\_Basins\\_April30\\_Final\\_BC.pdf](http://www.water.ca.gov/waterconditions/docs/Drought_Response-Groundwater_Basins_April30_Final_BC.pdf)

\_\_\_\_\_. 2014b.

[http://www.water.ca.gov/waterdatalibrary/docs/Hydstra/docs/09N03E08C004M/POR/GROUND\\_SURFACE\\_DISPLACEMENT\\_POINT\\_PLOT.PNG](http://www.water.ca.gov/waterdatalibrary/docs/Hydstra/docs/09N03E08C004M/POR/GROUND_SURFACE_DISPLACEMENT_POINT_PLOT.PNG) Accessed August 28, 2014.

DWR Northern District. 2002. Sacramento River Basinwide Water Management Plan. Available at:

[http://www.water.ca.gov/pubs/groundwater/sacramento\\_river\\_basinwide\\_water\\_management\\_plan/sacbasmgmtplan.pdf](http://www.water.ca.gov/pubs/groundwater/sacramento_river_basinwide_water_management_plan/sacbasmgmtplan.pdf)

EBMUD. 2012. Water Supply Management Program 2040 Plan. April.

Available at: <https://ebmud.com/sites/default/files/pdfs/wsmp-2040-revised-final-plan.pdf>

- Faunt, C.C., ed. 2009. Groundwater Availability of the Central Valley Aquifer, California: U.S. Geological Survey Professional Paper 1766, 225 p. Available at: [http://pubs.usgs.gov/pp/1766/PP\\_1766.pdf](http://pubs.usgs.gov/pp/1766/PP_1766.pdf)
- Page, R. W (U.S. Geological Survey). 1986. Geology of the Fresh Ground-Water Basin of the Central Valley, California, with Texture Maps and Sections. Regional Aquifer-System Analysis. U.S. Geological Survey, Professional Paper 1401-C. Available at: <http://pubs.er.usgs.gov/publication/pp1401C>
- Planert, Michael, and Williams, J.S. 1995. Ground water atlas of the United States: Segment 1, California, Nevada: U.S. Geological Survey Hydrologic Atlas. Available at: <http://pubs.er.usgs.gov/publication/ha730B>
- RWA. 2012. <http://www.rwah2o.org/rwa/programs/arbcup/>. Accessed June 29.
- Reclamation. 1990. A Management Plan for Agricultural Subsurface Drainage and Related Problems on the Westside San Joaquin Valley. Available at: <http://esrp.csustan.edu/projects/lrdp/documents/rainbowreport.pdf>
- \_\_\_\_\_. 1997. Central Valley Project Improvement Act Draft Programmatic Environmental Impact Statement.
- Reclamation and DWR. 2013. DRAFT Technical Information for Preparing Water Transfer Proposals . October. Available at: [http://water.ca.gov/watertransfers/docs/DTIWT\\_2014\\_Final\\_Draft.pdf](http://water.ca.gov/watertransfers/docs/DTIWT_2014_Final_Draft.pdf)
- \_\_\_\_\_. 2014. Addendum to DRAFT Technical Information for Preparing Water Transfer Proposal, January. Available at: [http://water.ca.gov/watertransfers/docs/2014/2014\\_Water\\_Transfer\\_Guidelines\\_Addendum.pdf](http://water.ca.gov/watertransfers/docs/2014/2014_Water_Transfer_Guidelines_Addendum.pdf)
- Santa Clara Valley WD. 2000. Relationship between groundwater elevations and land subsidence in Santa Clara County, May. Available at: <http://www.valleywater.org/WorkArea/DownloadAsset.aspx?id=430>
- \_\_\_\_\_. 2001. Santa Clara Valley Water District Groundwater Management Plan, July. Available at: <http://www.water.ca.gov/urbanwatermanagement/2010uwmps/Morgan%20Hill,%20City%20of/ELECTRONIC.Groundwater%20Management%20Plan.pdf>
- \_\_\_\_\_. 2010. Santa Clara Valley Water District Urban Water Management Plan . Available at: <http://www.valleywater.org/services/uwmp2010.aspx>

- \_\_\_\_\_. 2012. Santa Clara Valley Water District Groundwater Management Plan. Available at:  
<http://www.valleywater.org/Services/Groundwater.aspx>
- Shasta County Water Agency. 2007. Coordinated AB 3030 GMP for the Redding Groundwater Basin (Prepared November 1998), Updated May 2007.
- Sneed, Michelle, Brandt, Justin, and Solt, Mike. 2013. Land subsidence along the Delta-Mendota Canal in the northern part of the San Joaquin Valley, California, 2003–10: U.S. Geological Survey Scientific Investigations Report 2013–5142, 87 p . Available at:  
<http://pubs.usgs.gov/sir/2013/5142/> Accessed February 3, 2014.
- State Water Resources Control Board, Division of Water Rights, California Environmental Protection Agency. 1999. A Guide to Water Transfers. Available at: <http://www.waterrights.ca.gov/watertransferguide.pdf>
- Water Forum. 1999. Water Forum Agreement. Available at:  
<http://www.waterforum.org/agreement.cfm> Accessed May 21, 2002.
- West Yost Associates. 2012. Stony Creek Fan Final Investigative Report, December. Available at: <http://www.gcid.net/StonyCreek.html>
- Westlands WD. 1996. Westlands Water District GMP. Available at:  
[http://www.westlandswater.org/long/200207/gwmp2.pdf?title=Groundwater%20Management%20Plan%20\(AB3030\)&cwide=1440](http://www.westlandswater.org/long/200207/gwmp2.pdf?title=Groundwater%20Management%20Plan%20(AB3030)&cwide=1440)
- \_\_\_\_\_.2000. Land Retirement Demonstration Project 1999 Annual Report. pp. 60-68. Available at:  
<http://esrp.csustan.edu/publications/pdf/lrdp/1999ar/LRDPanrep1999.pdf>
- Williamson, A. K. 1989 Ground-Water Flow in the Central Valley, California, Regional Aquifer-System Analysis U.S. Geological Survey, Professional Paper 1401-D. Available at: <http://pubs.usgs.gov/pp/1401d/report.pdf>
- WRIME. 2011. Peer review of Sacramento valley Finite Element Groundwater Model (SACFEM2013), October.
- Yolo County. 1996. Yolo County Ordinance No. 1195, an Ordinance Adding Chapter 7 to Title 10 of the Yolo County Code Regarding the Extraction and Exportation of Groundwater from Yolo County. Available at:  
<http://www.yolocounty.org/home/showdocument?id=1899>
- \_\_\_\_\_. 2009: Yolo County, 2009. 2030 Countywide General Plan Yolo County. Available at: <http://www.yolocounty.org/general->

[government/general-government-departments/county-administrator/general-plan-update/draft-2030-countywide-general-plan](#)

*This page left blank intentionally.*