

Appendix M

Waters of the United States Documented at Battle Creek Project Sites

Appendix M

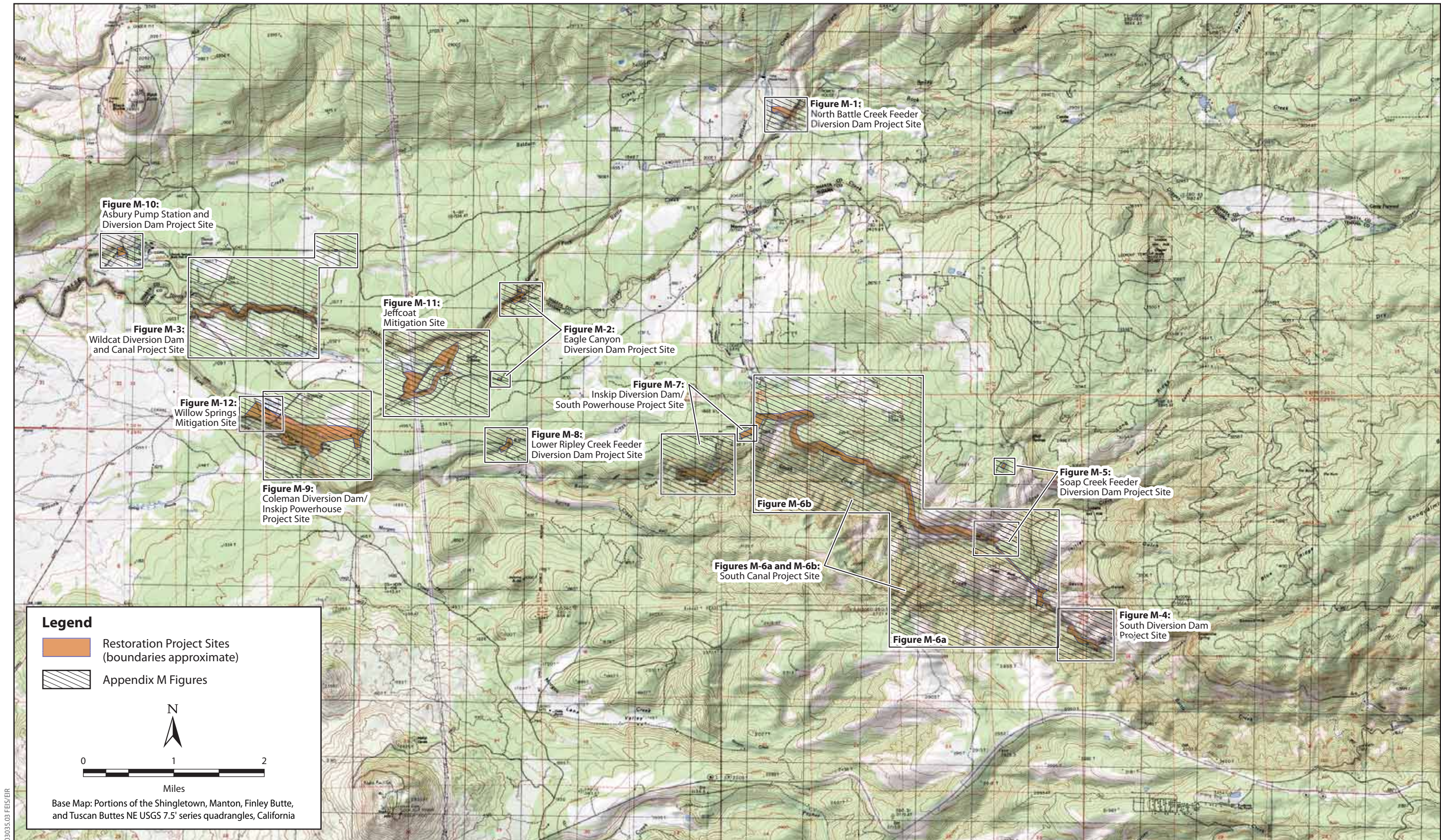
Table of Contents

Figures

- Figure M-1. Waters of the United States
North Battle Creek Feeder Diversion Dam
- Figure M-2. Waters of the United States
Eagle Canyon Diversion Dam Project Site
- Figure M-3. Waters of the United States
Wildcat Diversion Dam and Canal Project Site
- Figure M-4. Waters of the United States
South Diversion Dam Project Site
- Figure M-5. Waters of the United States
Soap Creek Feeder Diversion Dam Project Site
- Figure M-6a. Waters of the United States
South Canal Project Site
- Figure M-6b. Waters of the United States
South Canal Project Site
- Figure M-7. Waters of the United States
Inskip Diversion Dam/South Powerhouse Project Site
- Figure M-8. Waters of the United States
Lower Ripley Creek Feeder Project Site
- Figure M-9. Waters of the United States
Coleman Diversion Dam/Inskip Powerhouse Project Site
- Figure M-10. Waters of the United States
Asbury Pump Station and Diversion Dam Project Site

Figure M-11. Waters of the United States
Jeffcoat Mitigation Site

Figure M-12. Waters of the United States
Willow Springs Mitigation Site
Option A – Disinfection Facility



03035.03 FES/EIR

H:\GIS\Projects\batlle_creek\03035.03\arcmap\FEIS_maps\Fig_M1_NBCF.mxd LD 06.16.05

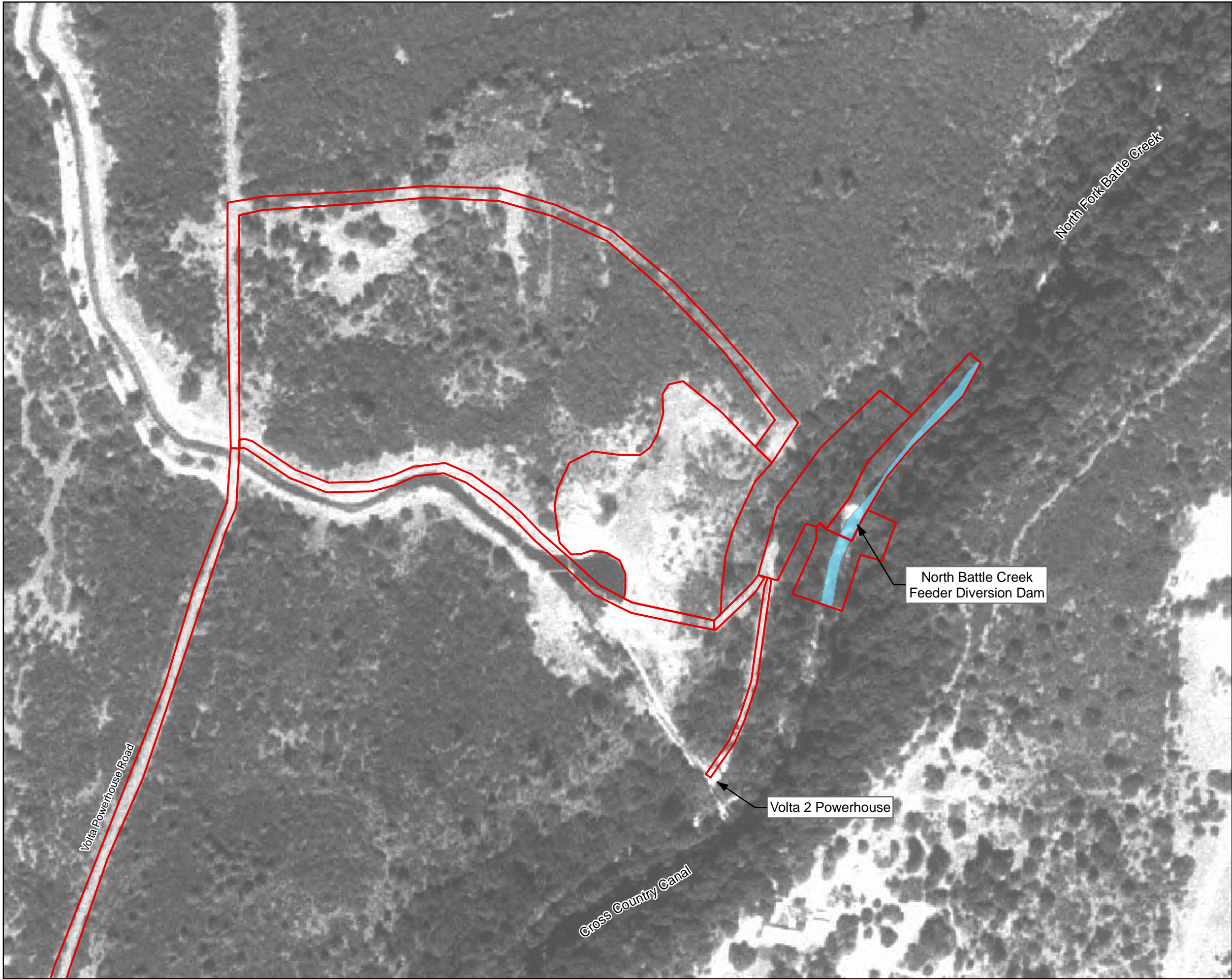
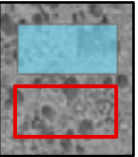


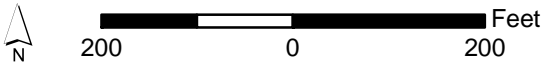
FIGURE M-1
WATERS OF THE UNITED STATES
NORTH BATTLE CREEK FEEDER
DIVERSION DAM PROJECT SITE



PERENNIAL DRAINAGE
CONSTRUCTION BOUNDARY

TYPE	AREA (ACRES)		
	TEMPORARY	PERMANENT	BANK STABILIZATION
PERENNIAL DRAINAGE	0.222	0.049	0.060
TOTAL	0.222	0.049	0.060

THE AFFECTED ACREAGES OF WETLANDS AND OTHER WATERS OF THE U.S. WERE CALCULATED USING CONSTRUCTION DESIGN DRAWINGS PROVIDED BY RECLAMATION TO SATISFY THE REQUIREMENTS OF SECTION 404 OF THE CLEAN WATER ACT.



SOURCE: U.S. Geological Survey Digital Orthophoto Quarter Quadrangles 1998

Prepared for the U.S. Department of Interior,
Bureau of Reclamation, and the
State Water Resources Control Board
by Jones & Stokes
July 2005

H:\GIS\Projects\battle_creek\03\035.03\arcmap\FEIS_maps\Fig_M2_ECDD.mxd LD 06/20/05

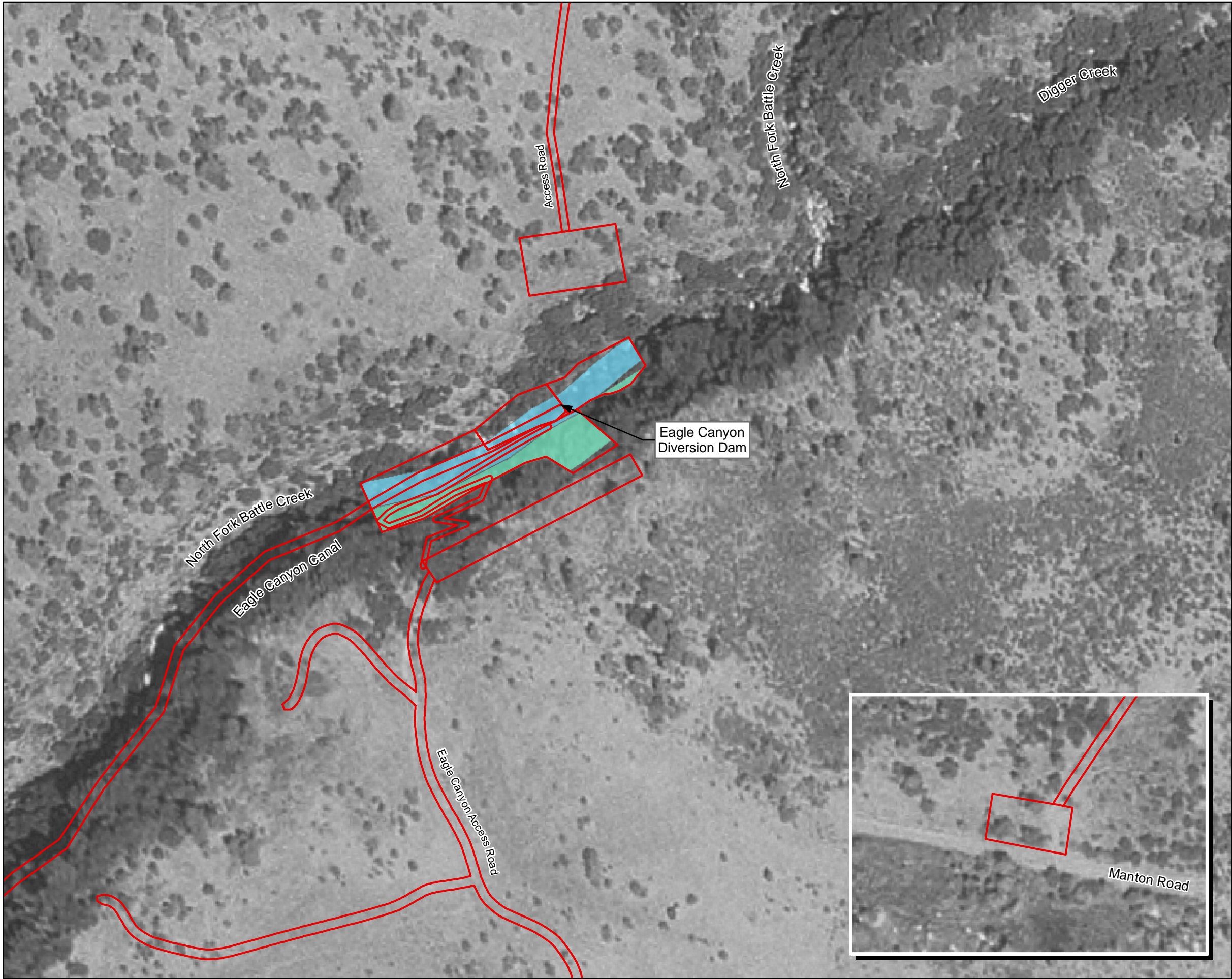
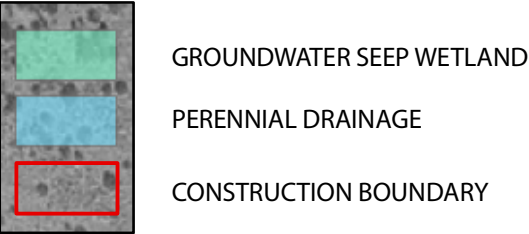


FIGURE M-2

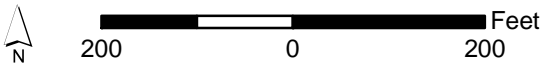
WATERS OF THE UNITED STATES
EAGLE CANYON DIVERSION DAM
PROJECT SITE



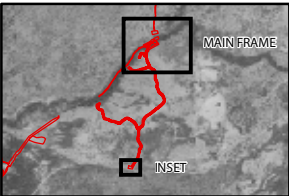
TYPE	AREA (ACRES)	
	TEMPORARY	PERMANENT
GROUNDWATER SEEP	0.004	0.107
PERENNIAL DRAINAGE	0.351	0.061
TOTAL	0.355	0.168

THE AFFECTED ACREAGES OF WETLANDS AND OTHER WATERS OF THE U.S. WERE CALCULATED USING CONSTRUCTION DESIGN DRAWINGS PROVIDED BY RECLAMATION TO SATISFY THE REQUIREMENTS OF SECTION 404 OF THE CLEAN WATER ACT.

UNDER THE SIX DAM AND THREE DAM REMOVAL ALTERNATIVES, APPROXIMATELY 3,230 LINEAR FEET OF EAGLE CANYON CANAL WOULD BE AFFECTED BETWEEN MANTON ROAD AND THE PENSTOCK AT INSKIP POWERHOUSE.



SOURCE: U.S. Geological Survey Digital Orthophoto Quarter Quadrangles 1998



Prepared for the U.S. Department of Interior,
Bureau of Reclamation, and the
State Water Resources Control Board
by Jones & Stokes
July 2005

H:\GIS\Projects\battle_creek\03035.03\arcmap\FEIS_maps\Fig_M3_WDD.mxd LD 06.16.05

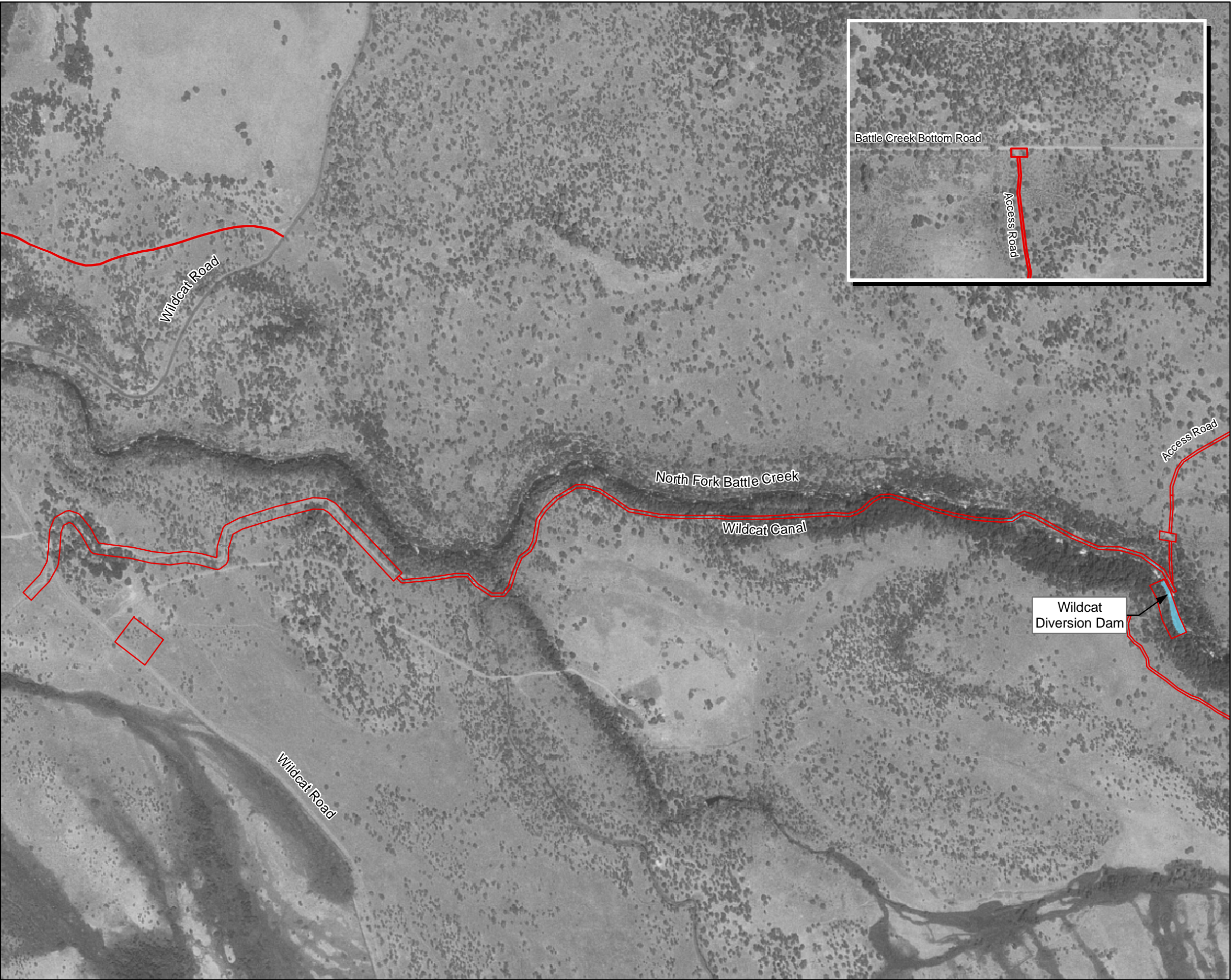
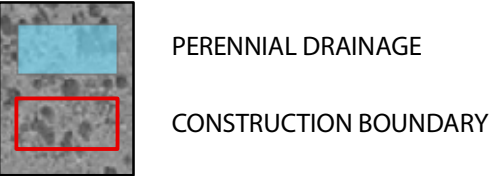


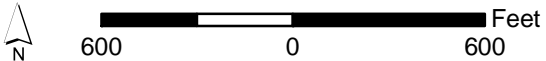
FIGURE M-3
WATERS OF THE UNITED STATES
WILDCAT DIVERSION DAM AND CANAL
PROJECT SITE



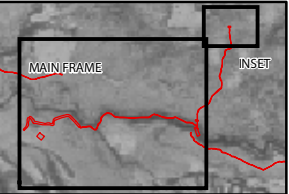
TYPE	AREA (ACRES)	
	TEMPORARY	RESTORATION
PERENNIAL DRAINAGE	0.251	0.006
TOTAL	0.251	0.006

NOTE: NO IMPACTS TO WATERS OF THE UNITED STATES
ARE ASSOCIATED WITH THE DECOMMISSIONING OF
WILDCAT CANAL.

THE AFFECTED ACREAGES OF WETLANDS AND OTHER WATERS OF THE
U.S. WERE CALCULATED USING CONSTRUCTION DESIGN DRAWINGS
PROVIDED BY RECLAMATION TO SATISFY THE REQUIREMENTS OF
SECTION 404 OF THE CLEAN WATER ACT.



SOURCE: U.S. Geological Survey Digital Orthophoto Quarter Quadrangles 1998



Prepared for the U.S. Department of Interior,
Bureau of Reclamation, and the
State Water Resources Control Board
by Jones & Stokes
July 2005

H:\GIS\Projects\battle_creek\03035.03\arcmap\FEIS_maps\Fig_M4_SDD.mxd LD 06/16/05

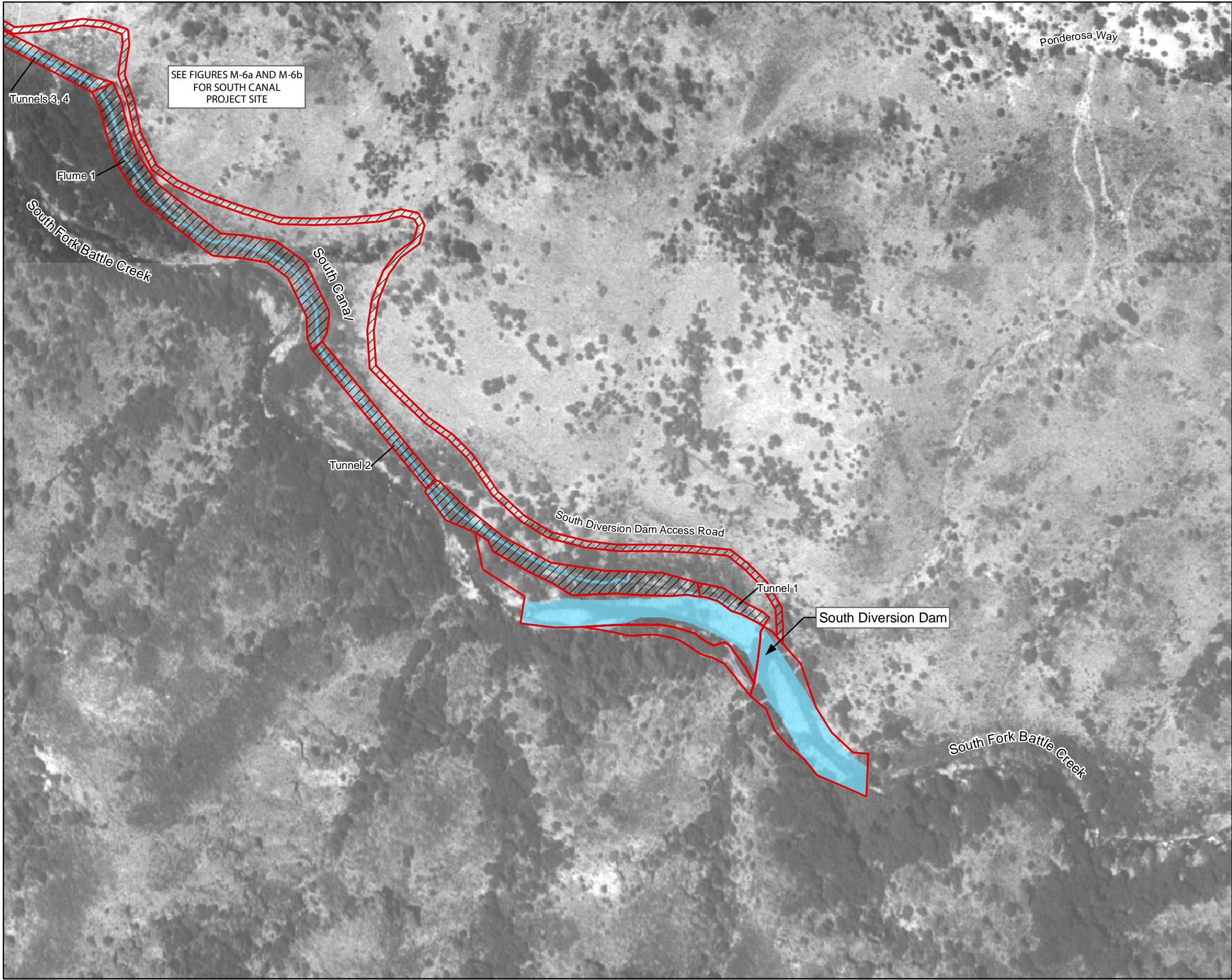
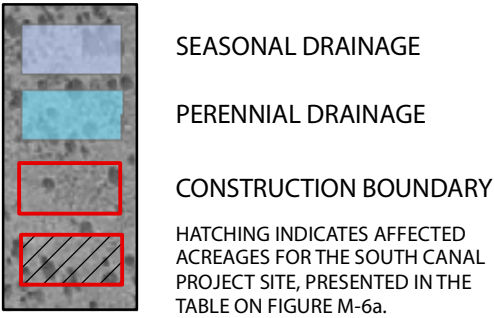
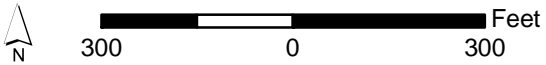


FIGURE M-4
WATERS OF THE UNITED STATES
SOUTH DIVERSION DAM PROJECT SITE



TYPE	AREA (ACRES)	
	TEMPORARY	RESTORATION
PERENNIAL DRAINAGE	2.615	0.057
TOTAL	2.615	0.057

THE AFFECTED ACREAGES OF WETLANDS AND OTHER WATERS OF THE U.S. WERE CALCULATED USING CONSTRUCTION DESIGN DRAWINGS PROVIDED BY RECLAMATION TO SATISFY THE REQUIREMENTS OF SECTION 404 OF THE CLEAN WATER ACT.



SOURCE: U.S. Geological Survey Digital Orthophoto Quarter Quadrangles 1998

Prepared for the U.S. Department of Interior,
Bureau of Reclamation, and the
State Water Resources Control Board
by Jones & Stokes
July 2005

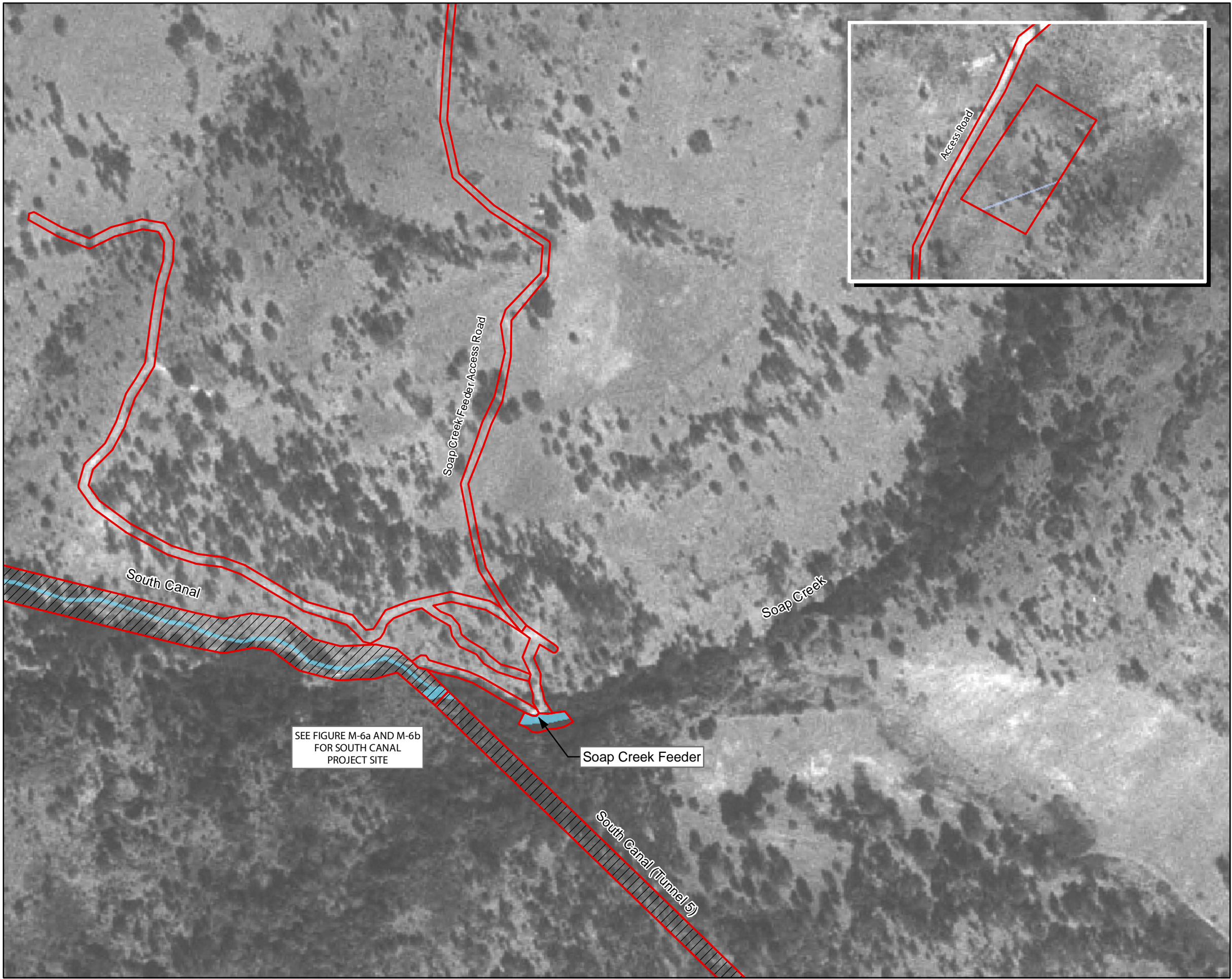
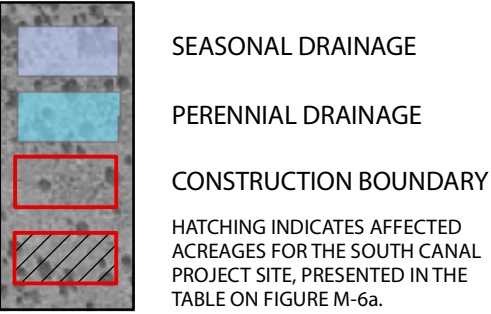
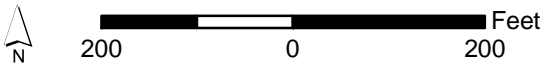


FIGURE M-5
WATERS OF THE UNITED STATES
SOAP CREEK FEEDER DIVERSION
DAM PROJECT SITE

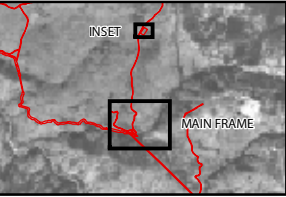


TYPE	AREA (ACRES)	
	TEMPORARY	RESTORATION
PERENNIAL DRAINAGE	0.027	0.001
TOTAL	0.027	0.001

THE AFFECTED ACREAGES OF WETLANDS AND OTHER WATERS OF THE U.S. WERE CALCULATED USING CONSTRUCTION DESIGN DRAWINGS PROVIDED BY RECLAMATION TO SATISFY THE REQUIREMENTS OF SECTION 404 OF THE CLEAN WATER ACT.



SOURCE: U.S. Geological Survey Digital Orthophoto Quarter Quadrangles 1998



Prepared for the U.S. Department of Interior,
Bureau of Reclamation, and the
State Water Resources Control Board
by Jones & Stokes
July 2005

H:\GIS\Projects\batlle_creek\03\035.03\arcmap\FEIS_maps\Fig_M6a_SC.mxd LD 06/20/05

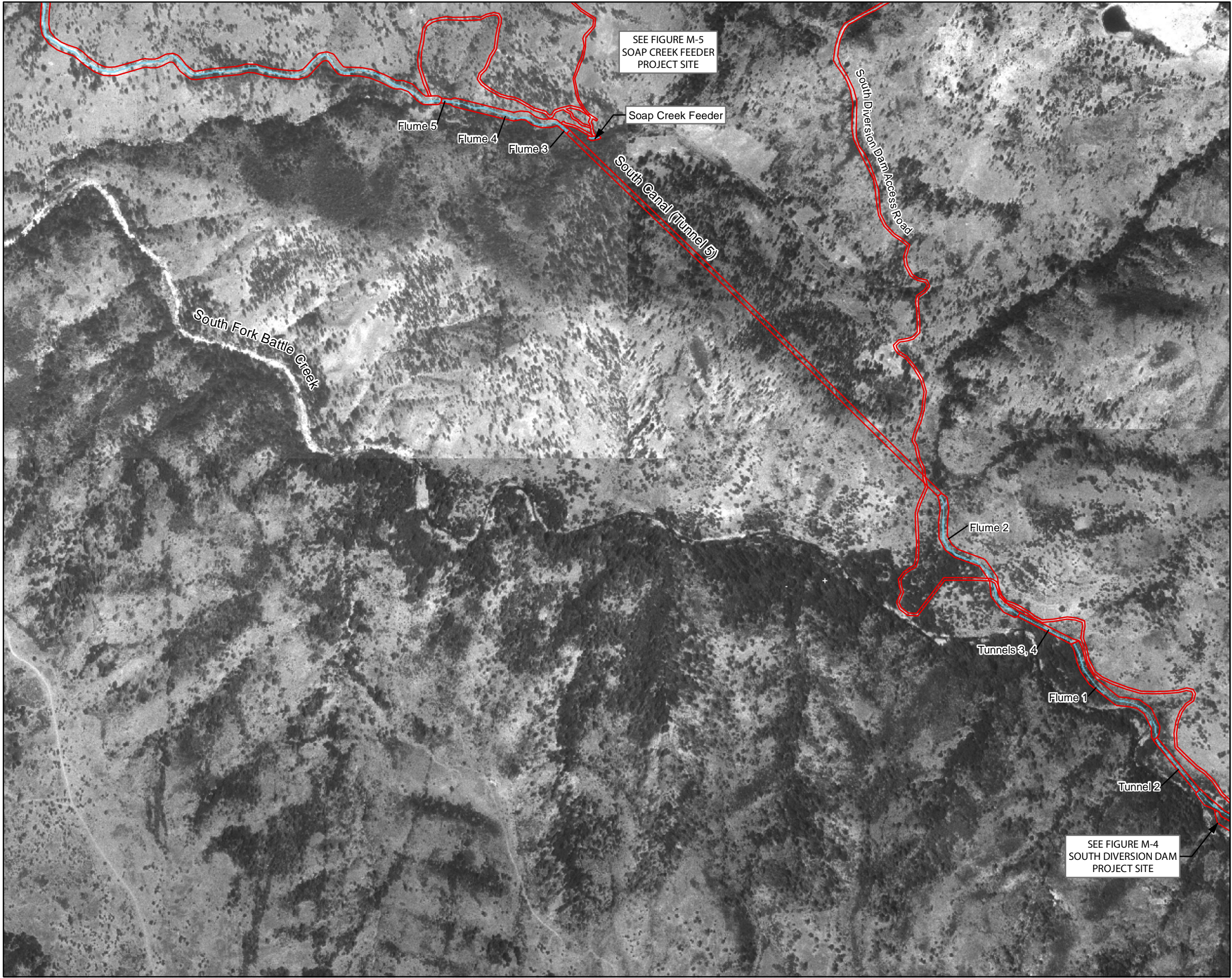
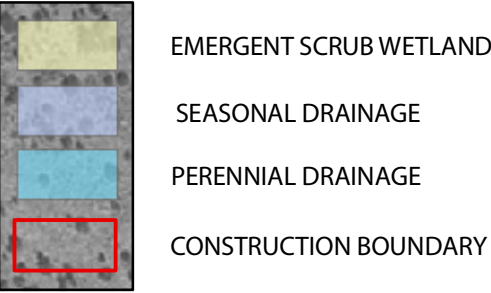


FIGURE M-6a
WATERS OF THE UNITED STATES
SOUTH CANAL PROJECT SITE



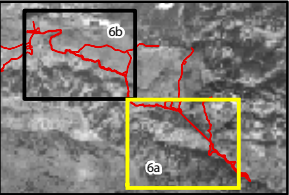
TYPE	AREA (ACRES)	
	PERMANENT	RESTORATION
PERENNIAL DRAINAGE	4.300	0.014
TOTAL	4.300	0.014

THE AFFECTED ACREAGES OF WETLANDS AND OTHER WATERS OF THE U.S. WERE CALCULATED USING CONSTRUCTION DESIGN DRAWINGS PROVIDED BY RECLAMATION TO SATISFY THE REQUIREMENTS OF SECTION 404 OF THE CLEAN WATER ACT.

FOR THE AFFECTED ACREAGE AT THE SOAP CREEK FEEDER DIVERSION DAM SITE, SEE THE TABLE ON FIGURE L-5.
FOR THE AFFECTED ACREAGE AT THE SOUTH DIVERSION DAM SITE, SEE THE TABLE ON FIGURE L-4.



SOURCE: U.S. Geological Survey Digital Orthophoto Quarter Quadrangles 1998



Prepared for the U.S. Department of Interior,
Bureau of Reclamation, and the
State Water Resources Control Board
by Jones & Stokes
July 2005

H:\GIS\Projects\battle_creek\03035.03\arcmap\FEIS_maps\Fig_M6b_SC.mxd LD 06/13/05

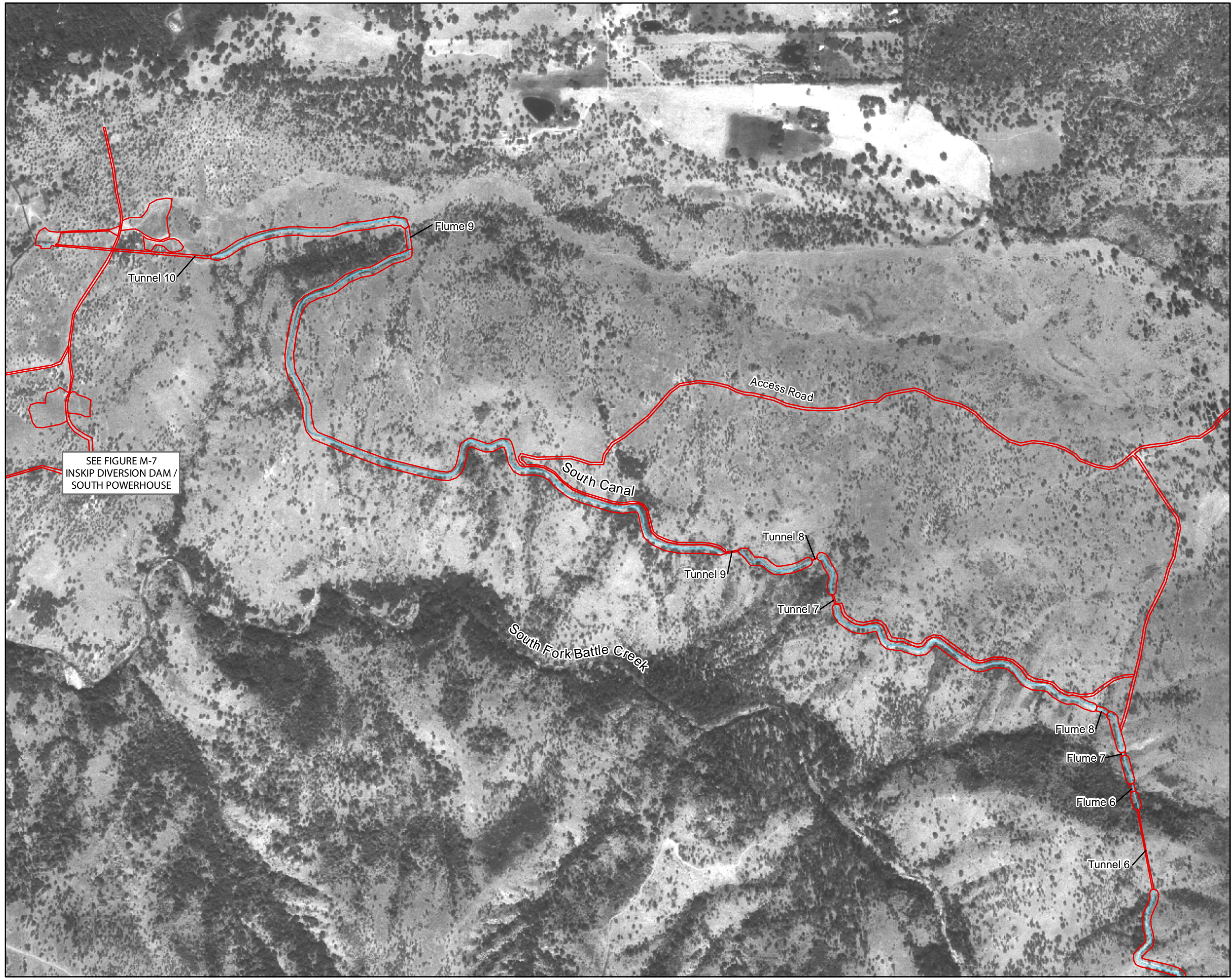
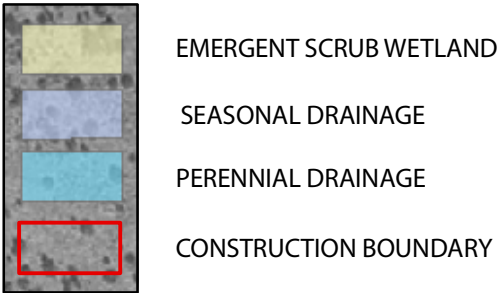
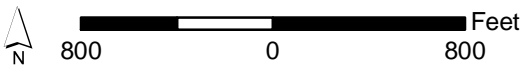


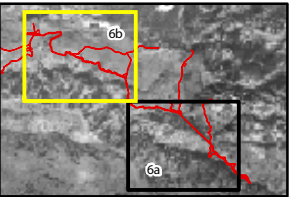
FIGURE M-6b
WATERS OF THE UNITED STATES
SOUTH CANAL PROJECT SITE



FOR ACREAGE IMPACTS, SEE FIGURE M-6a



SOURCE: U.S. Geological Survey Digital Orthophoto Quarter Quadrangles 1998



Prepared for the U.S. Department of Interior,
Bureau of Reclamation, and the
State Water Resources Control Board
by Jones & Stokes
July 2005