

Scoping Meeting On-Project Plan

Environmental Impact Statement/ Environmental Impact Report

June 24, 2014
Klamath Falls, OR
U.S. Bureau of Reclamation
Klamath Water and Power Agency

June 25, 2014
Tulelake, CA
U.S. Bureau of Reclamation
Klamath Water and Power Agency



Agenda/Overview

- Welcome/Introductions
- Purpose of scoping and today's meeting
- Environmental process
- KBRA and On-Project Plan background
- Preliminary alternatives
- Schedule and next steps
- Public input

Lead Agencies

- **National Environmental Policy Act (NEPA)**

- *U.S. Bureau of Reclamation (Reclamation)*

- Christine Karas (Klamath Basin Area Office, Area Manager Representative)

- **California Environmental Quality Act (CEQA)**

- *Klamath Water and Power Agency (KWAPA)*

- Hollie Cannon (KWAPA Executive Director)

Purpose of Scoping and Scoping Meeting

- Solicit and gather public input to assist in framing analyses/focus of Draft Environmental Impact Statement/Report (EIS/EIR)
- Describe the On-Project Plan Proposed Action and alternatives
- Accept public comments on the scope of Draft EIS/EIR
- Will be other opportunities to comment

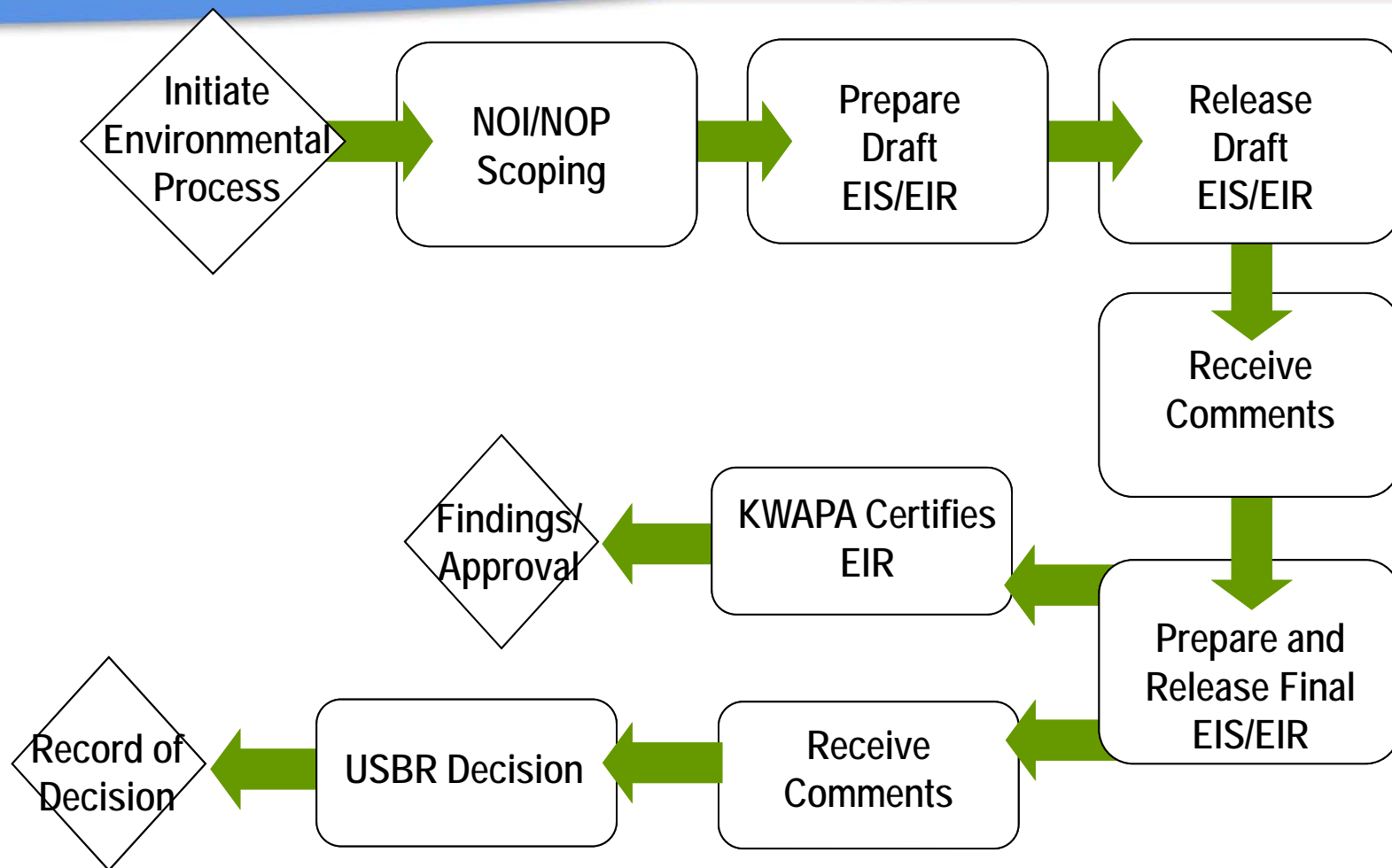
Environmental Review



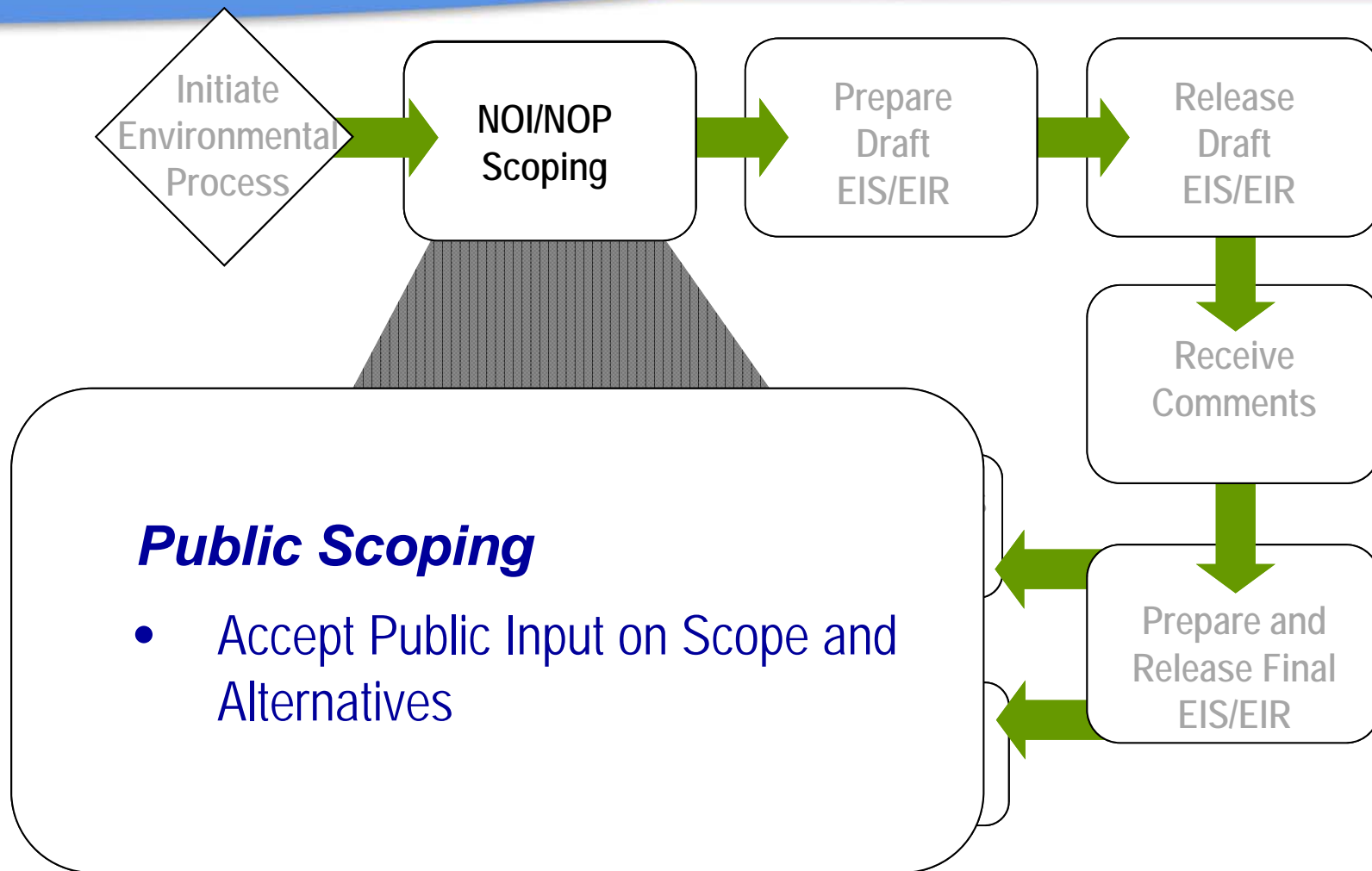
Environmental Compliance Process

- Actions require environmental review
 - *National Environmental Policy Act (NEPA) (Reclamation)*
 - *California Environmental Quality Act (CEQA)*
(KWAPA)
- Must evaluate and disclose the potential impacts of those actions in an EIS and/or EIR
- For environmental compliance there is a need for a range of Alternatives

Where We Are in the Environmental Review Process...



Where We Are in the Environmental Review Process...



Environmental Review - Resource Topics

- Hydrology/Water Resources
- Water Quality
- Groundwater Resources/Groundwater Quality
- Socioeconomics
- Land Use/Agricultural Resources
- Biological Resources
- Cultural and Historic Resources
- Indian Trust Resources/Tribal Trust
- Climate Change/GHG
- Environmental Justice
- Geology and Soils
- Utilities and Service Systems
- Noise and Vibration
- Additional resources to be considered

Need to Consider Alternatives

*Under NEPA,
Reclamation must
determine what other
alternatives should be
considered and
whether these
alternatives are
“reasonable”*

*Under CEQA, KWAPA
must identify/consider
alternatives that
would avoid
significant
environmental
impacts*

Klamath Basin Restoration Agreement and On-Project Plan Background



How did we get here?

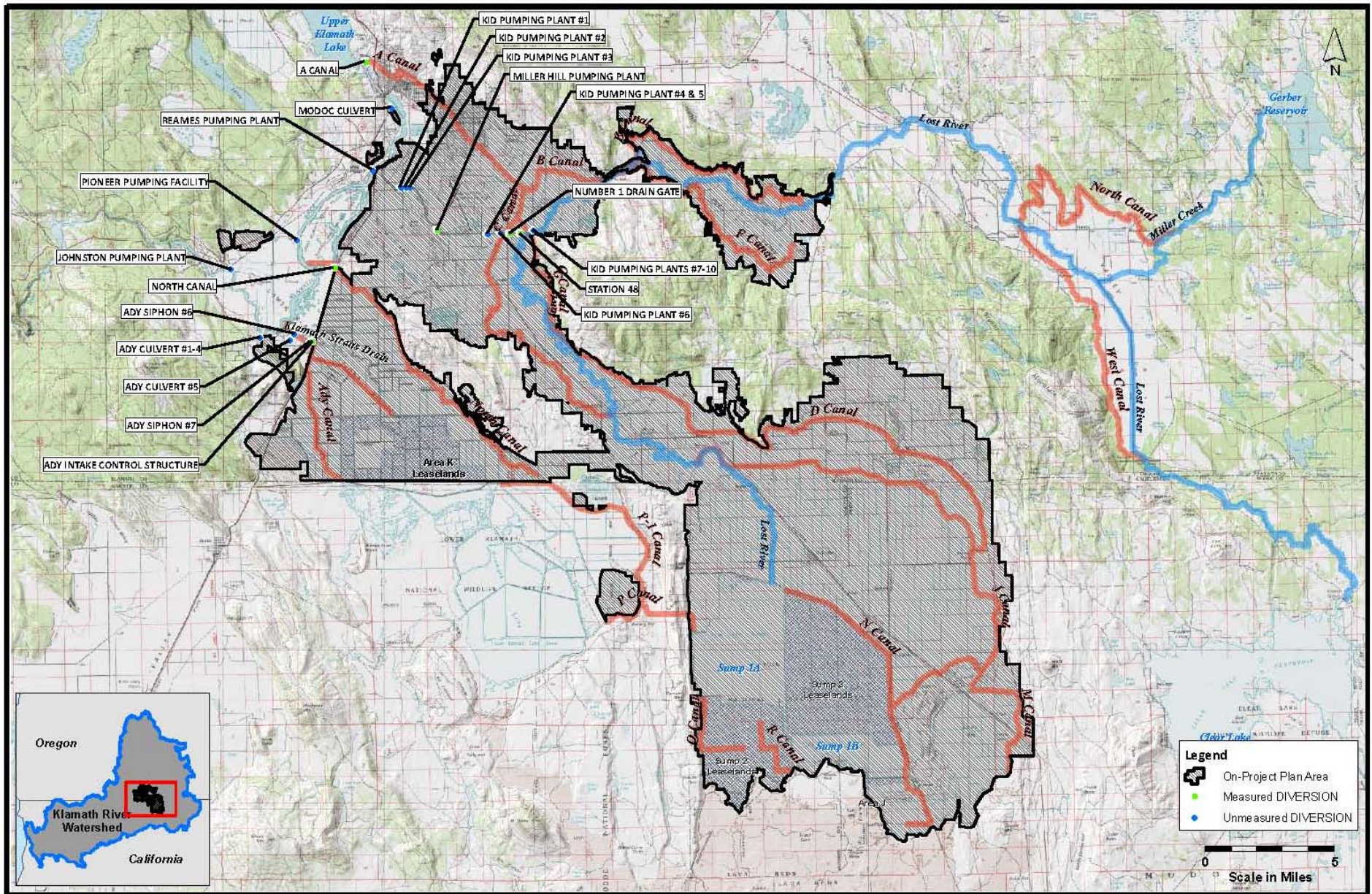
Background: Klamath Basin Restoration Agreement (KBRA)

- Water Settlement Agreement to:
 - *Restore and sustain fisheries*
 - *Establish reliable water and power supplies*
 - *Contribute to the public welfare and sustainability of Klamath Basin communities*
- More than 40 stakeholders, interest groups, Tribes, etc.
- Signed on February 18, 2010 by non federal parties
- Established a Limitation on DIVERSION and requires an On-Project Plan
 - *KWAPA is to prepare the Plan, Reclamation is to approve the plan*
 - *Full authorization and funding requires federal legislation*
 - *Planning efforts for the OPP are conducted under existing Reclamation authority and funding (Enhancement Act 2000).*

KBRA requirements for the OPP

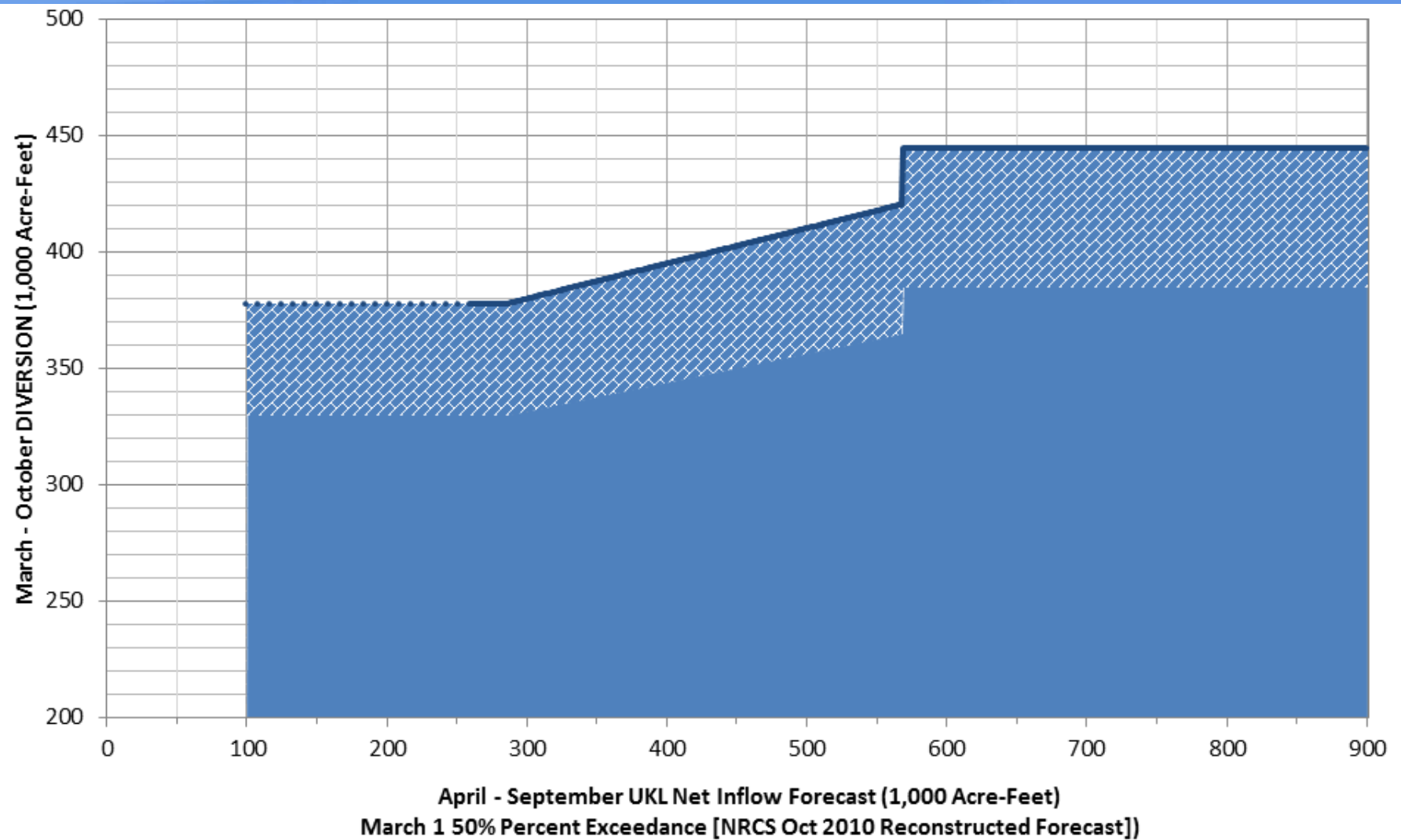
- Align water supply and demand for a portion of the Klamath Reclamation Project (the On-Project Plan Area, or OPPA)
- KWAPA shall consider and evaluate short-term, intermittent, long-term, and permanent measures including:
 - Water conservation and efficiency
 - Storage
 - Groundwater
 - Demand Management
 - Other
- Utilization of groundwater pursuant to the OPP shall not have an Adverse Impact on specified springs throughout the Klamath River Basin

Description of the OPPA



Source: MBK Engineers

KBRA Limitation on DIVERSION



Refuge Allocation

Limitation on DIVERSION Including Refuge Allocation

Further Limitation on DIVERSION possible (Extreme Drought)

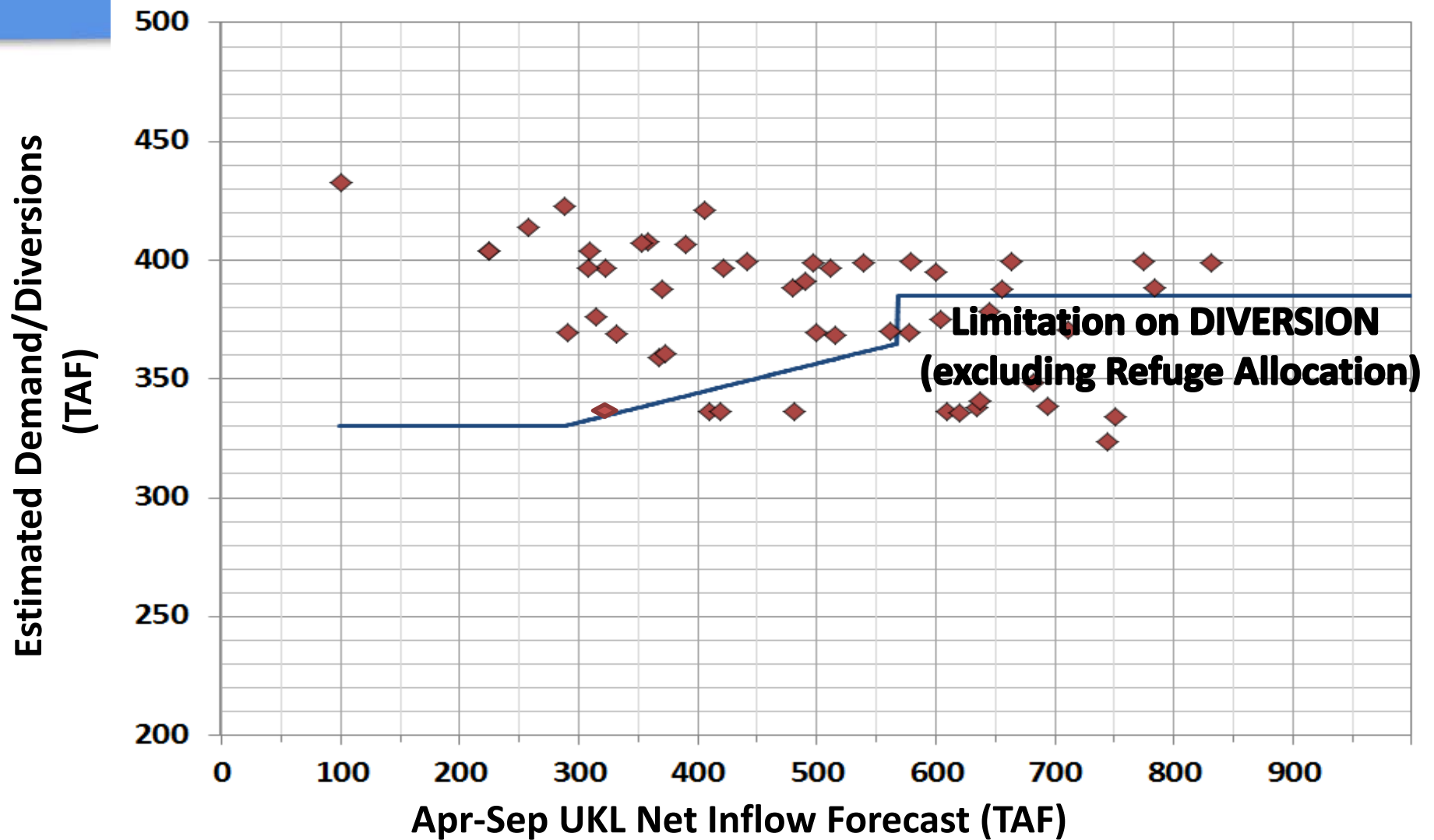
KBRA and Environmental Compliance

- KBRA requires KWAPA to develop, and KWAPA and Reclamation to approve, an On-Project Plan
- These actions trigger environmental compliance review

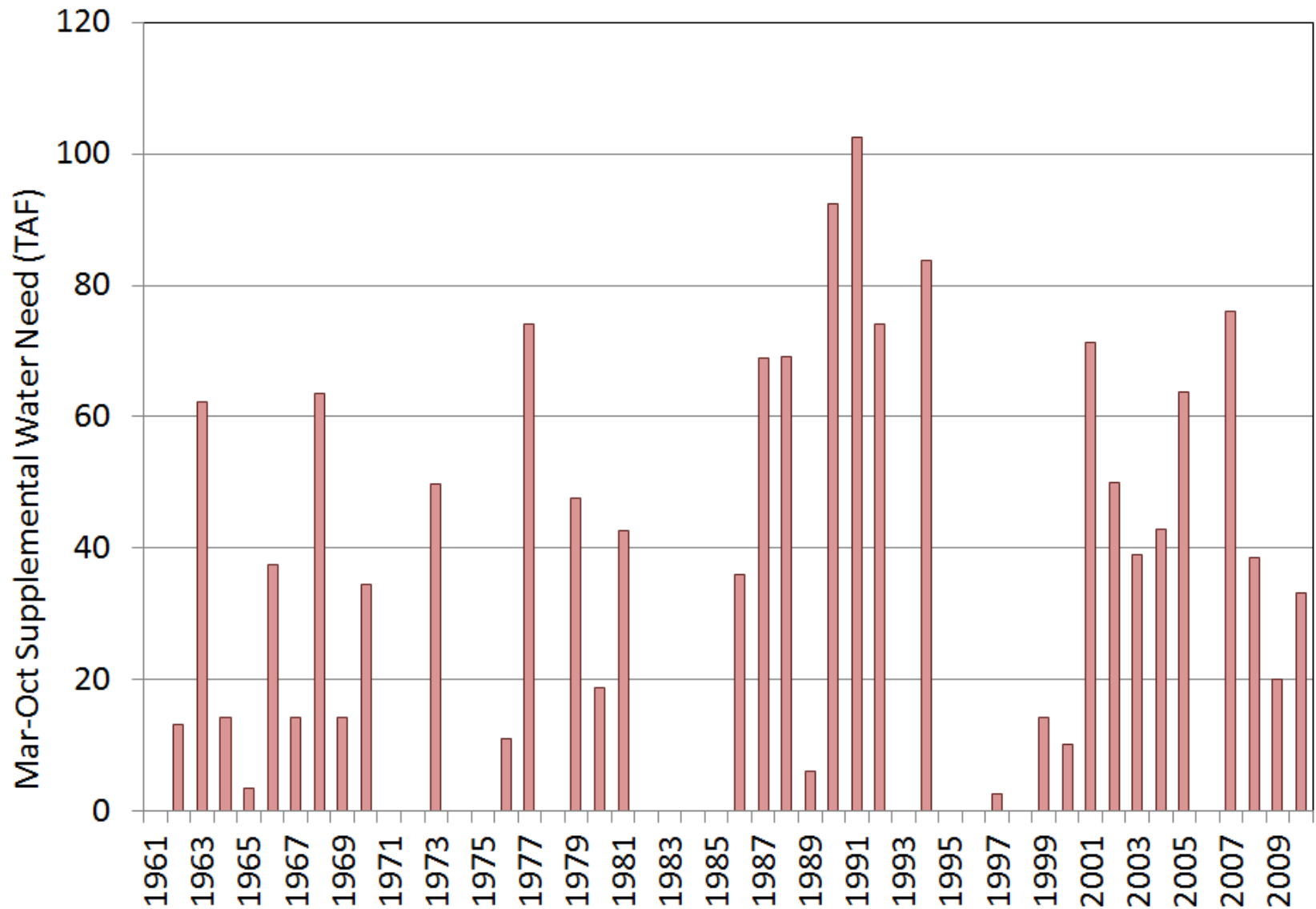
KWAPA's Efforts to Develop the OPP

- Three years (August 2011 to March 2014) coordinated public outreach
- Seven Technical Memorandums (September 2011 to February 2014)
- Six public meetings
- Twelve On-Project Plan Advisory Committee (OPPAC) meetings

Estimated On-Project Plan Activities (1961-2000)



Historic Supplemental Water Need



Proposed OPP Formulation

- Identification of Options
- Screening of Options
- Feasible Options
 - *Water conservation and efficiency*
 - Recirculation projects; TID/Sump 1A and LKNWR/KSD
 - *Groundwater*
 - Utilize USGS model to ensure long-term sustainability
 - *Other*
 - Facilitate existing activities that reduce DIVERSION
 - *Demand management*
 - Permanent arrangement, infrequently implemented
- Unfeasible Options
 - *Storage*
 - *Land Retirement*

Description of Alternatives

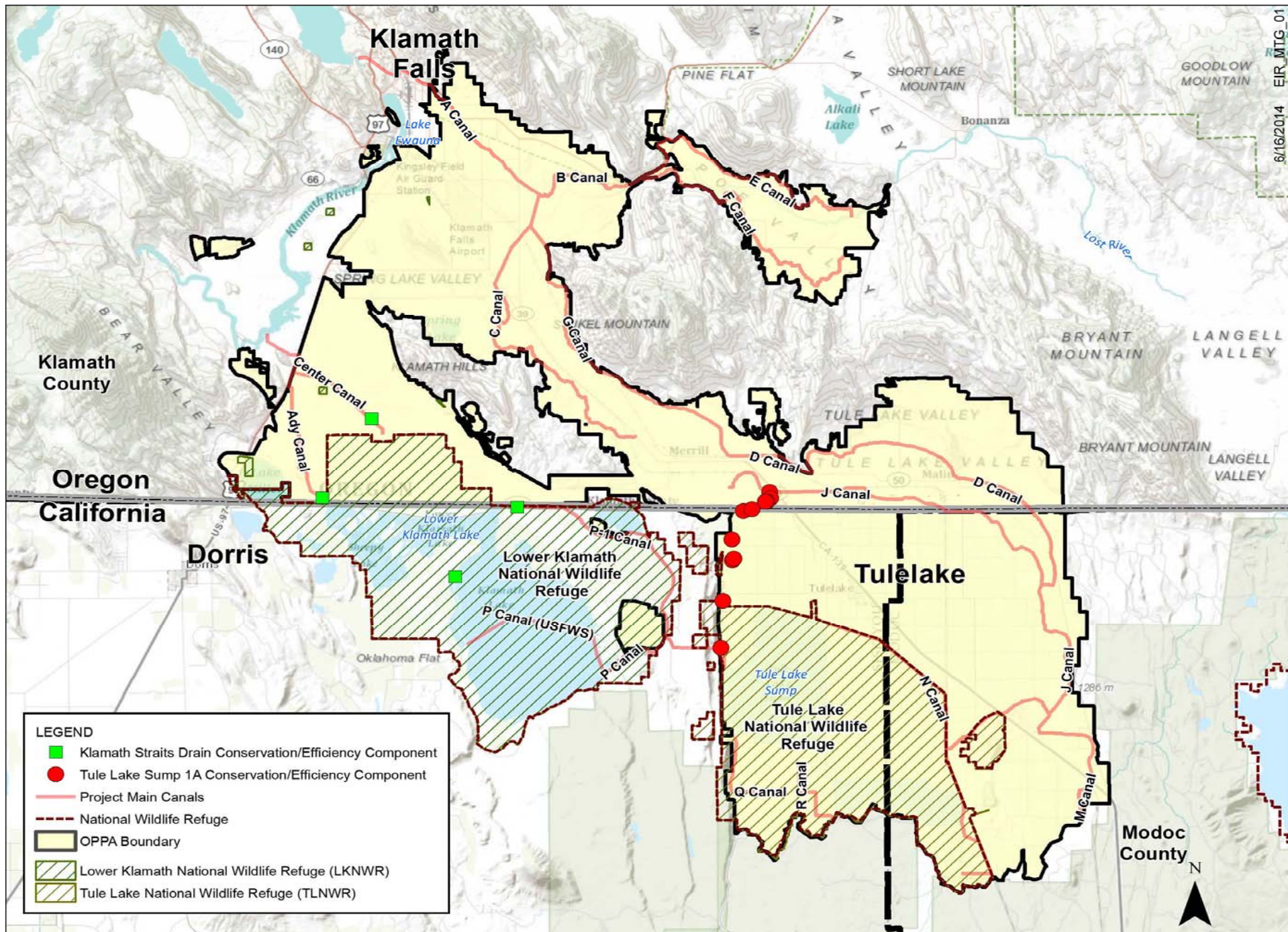


Alternative 1 – No Action/No Project

- No Action (NEPA)
- No Project (CEQA)
- Future foreseeable conditions in the absence of the Project

Alternative 2 – Proposed OPP

- Water conservation and other selected measures
 - *Potential yield as a result of recirculation projects*
 - *Additional efforts (permanent switch to groundwater)*
 - *20 TAF*
- Long term contracts to not surface irrigate with willing participants in certain years
 - *Can use groundwater*
 - Drawdown limitations pursuant to OWRD requirements
 - Regional distribution
 - Up to 75 TAF
 - *Temporary land Idling*
 - Sustainable distribution
 - Up to 30 TAF



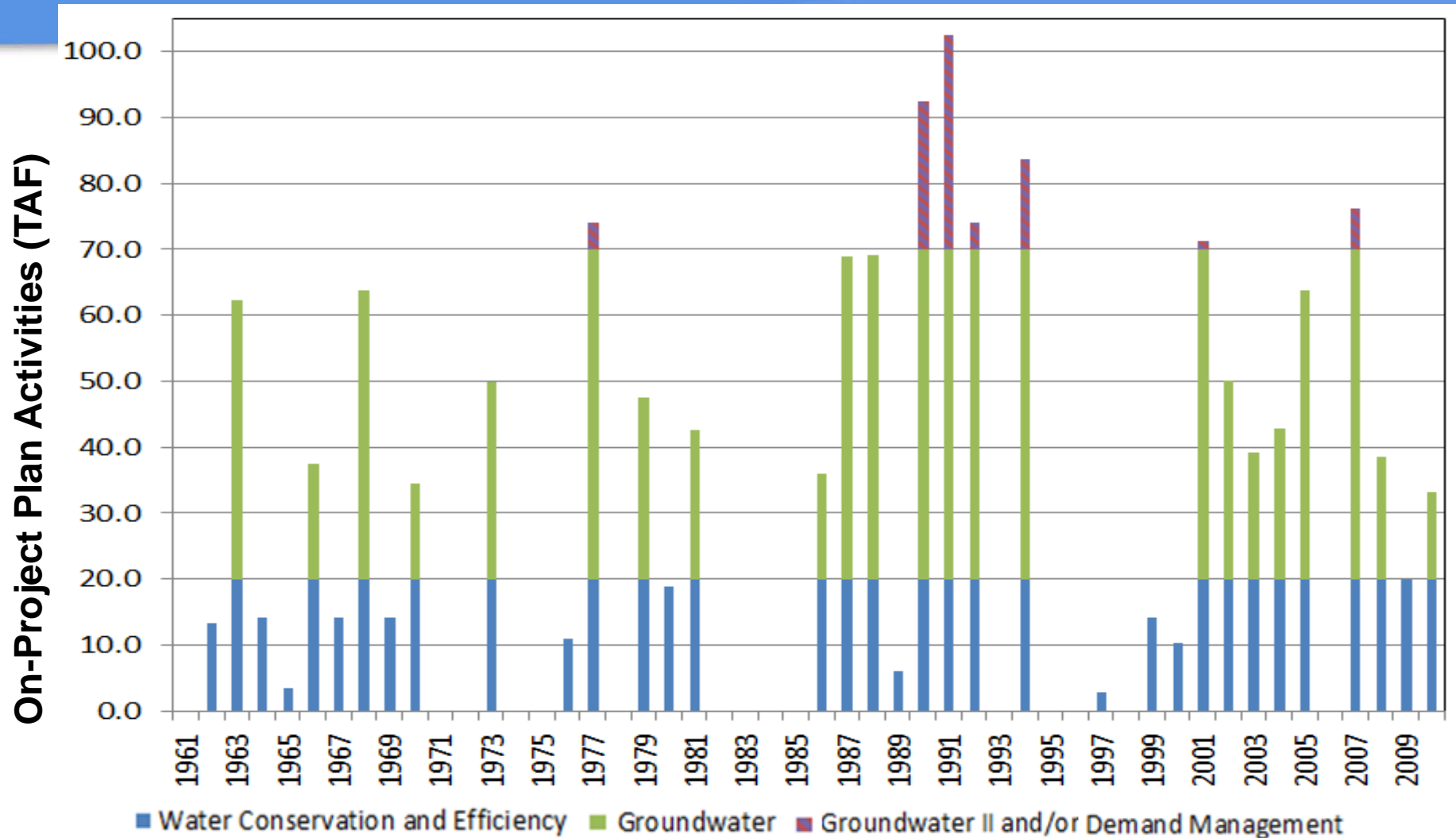
Water Conservation/Efficiency Components

- Klamath Straits Drain Conservation/Efficiency Component
 - *Install pipelines to bypass Pumps E and EE*
 - *Replace control gate/install new weir at the end of Ady Canal*
 - *Install new flowmeter and weir at P1 Canal*
 - *Install new pump station/trash rack at KSD to Canal 6a*
- Tulelake Sump 1A Conservation/Efficiency Component
 - *Improve entire length of J-1 Canal (vegetation removal, deepen canal, install 1 ½ mile pipeline)—6 ½ miles.*
 - *Replace five check structures, add five new lift pumps*
 - *Replace four existing headworks structures, add four new weirs*
 - *Replace Pump 26 at the end of J-1 canal*

Contractual Agreements

- Enter perpetual contractual agreements to ensure flexibility
 - *Willing participants*
 - *Bid/offer process*
 - *Key contract terms*
 - *Upfront payment*
- Equitable participation by refuge lands within OPPA (lease lands)
 - *Subject to refuge approval*

Anticipated Ability of Proposed OPP to Meet Estimated March through October Supplemental Water Need



Proposed OPP Implementation and Administration

● Implementation

- *Construction of water conservation/efficiency components*
- *Agreements with willing participants*
- *Measurement/monitoring*

● Administration

- *Annual determination of/meeting supplemental water need*
- *Measurement/monitoring*
- *Adaptive management*

Alternative 3 – Maximize Groundwater Usage

- Facilitate use of groundwater
 - *Contractual agreements with willing land owners*
 - *Drawdown limitations pursuant to OWRD requirements*
 - *Regional distribution*
 - *Up to 100 TAF*

Alternative 4 – Maximize Demand Management

- Water conservation and other selected measures
 - *Potential yield as a result of recirculation projects*
 - *Additional efforts (permanent switch to groundwater)*
 - *20 TAF*
- Temporary land Idling
 - *Contractual agreements with willing land owners*
 - *Up to 80 TAF*

Schedule and Next Steps



Environmental Review - Schedule

- Scoping meeting (Today)
- Release public Draft EIS/EIR (Fall 2014)
- Public meeting (early 2015)
- Final EIS/EIR (Fall 2015)
- USBR Record of Decision (late 2015)
- KWAPA Certification of EIR/Project Approval (late 2015/early 2016)



Public Input



Public Input

- Ground rules
- Accepting comments on Scope of the EIS/EIR and Alternatives
 - *Speaker sign-in*
 - *Oral comments*
 - 3-minute time limit, please
 - *Written comments*
 - Received by July 15th to:

Tara Jane Campbell Miranda
US Bureau of Reclamation
6600 Washburn Way
Klamath Falls, Oregon 97603
541-880-2583
Sha-kfo-oppcmts@usbr.gov

Hollie Cannon
Klamath Water and Power Agency
735 Commercial Street, #4000
Klamath Falls, Oregon 97601
hollie.cannon@kwapa.org

Public Input

- Ground rules
 - *3-minute time limit*
 - *One person speaks at a time*
 - *Be respectful of those speaking*
 - *No profanity*
 - *Silence cell phones*
 - *Remember court reporter*

Tara Jane Campbell Miranda
US Bureau of Reclamation
6600 Washburn Way
Klamath Falls, Oregon 97603
541-880-2583
Sha-kfo-oppcmts@usbr.gov

Hollie Cannon
Klamath Water and Power Agency
735 Commercial Street, #4000
Klamath Falls, Oregon 97601
hollie.cannon@kwapa.org

For more information, please go to:

<http://kwapa.org/>

http://www.usbr.gov/mp/nepa/nepa_proj_details.cfm?Project_ID=17801