

Appendix F

Groundwater Monitoring Data

This appendix contains groundwater monitoring data for wells within the seller districts. Two sources (1) CASGEM and (2) DWR's Water Data Library were used to obtain the monitoring data. The process to query out the groundwater level data is explained below.

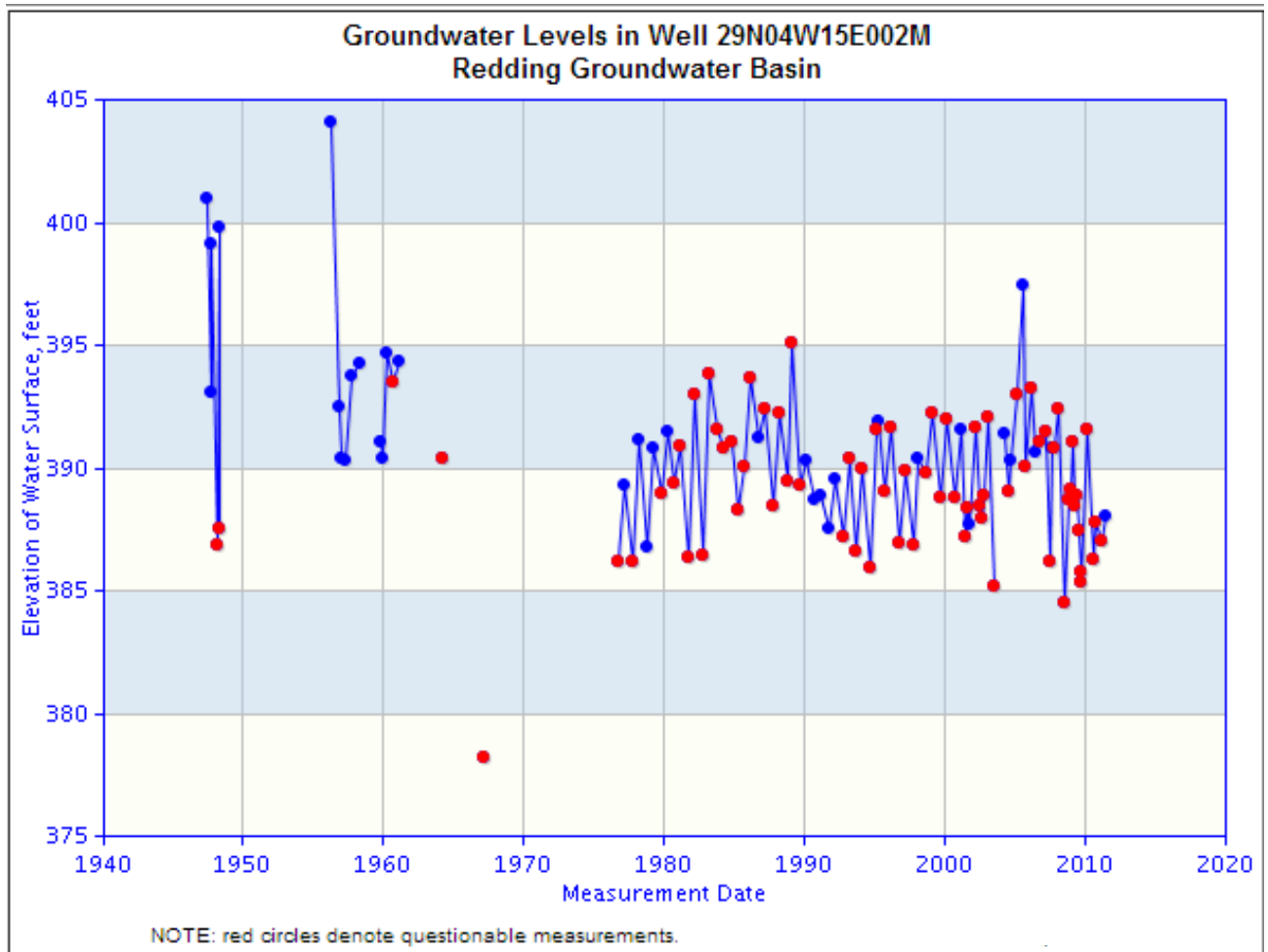
Direction to manually lookup groundwater level data from DWR's CASGEM website:
Example Well 29N04W15E002M

1. Go to CASGEM Public Login website:
http://www.water.ca.gov/groundwater/casgem/online_system.cfm (setup login if not previously done)
2. Select Well Information> State Well Number. Input well number (29N04W15E002M for this example)
3. Go to Well Details: View> View Hydrograph

Direction to manually lookup groundwater level data from DWR's water data library:
Example Well 29N04W15E002M

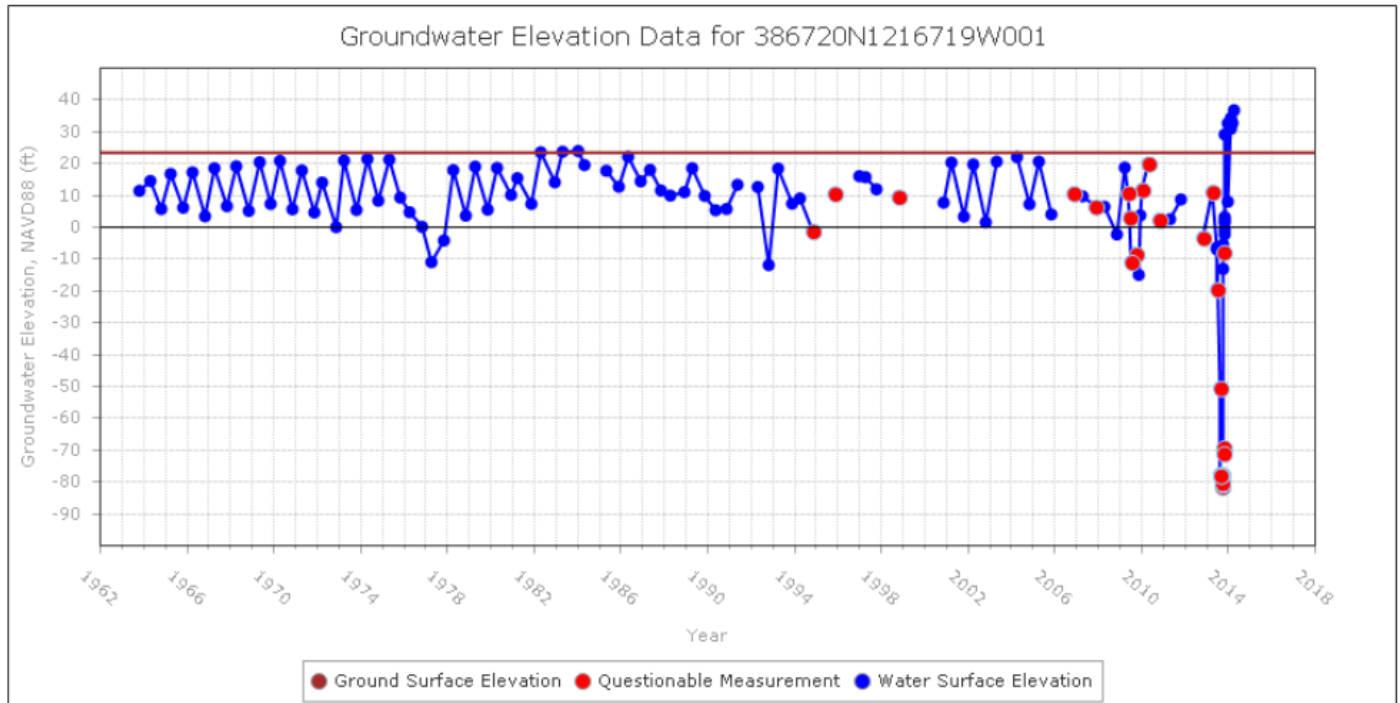
1. Go to DWR Water Data Library website: <http://www.water.ca.gov/waterdatalibrary/>
2. Select Groundwater Level Data> Data by Township
3. Input Township, Range, Baseline and Sections information (For example well **29N04W15E002M** Township= 24 North; Range=04 West; Baseline= Mt. Diablo; and Sections= 15)

Anderson-Cottonwood Irrigation District
State Well ID 29N04W15E002M



Source: DWR's Water Data Library

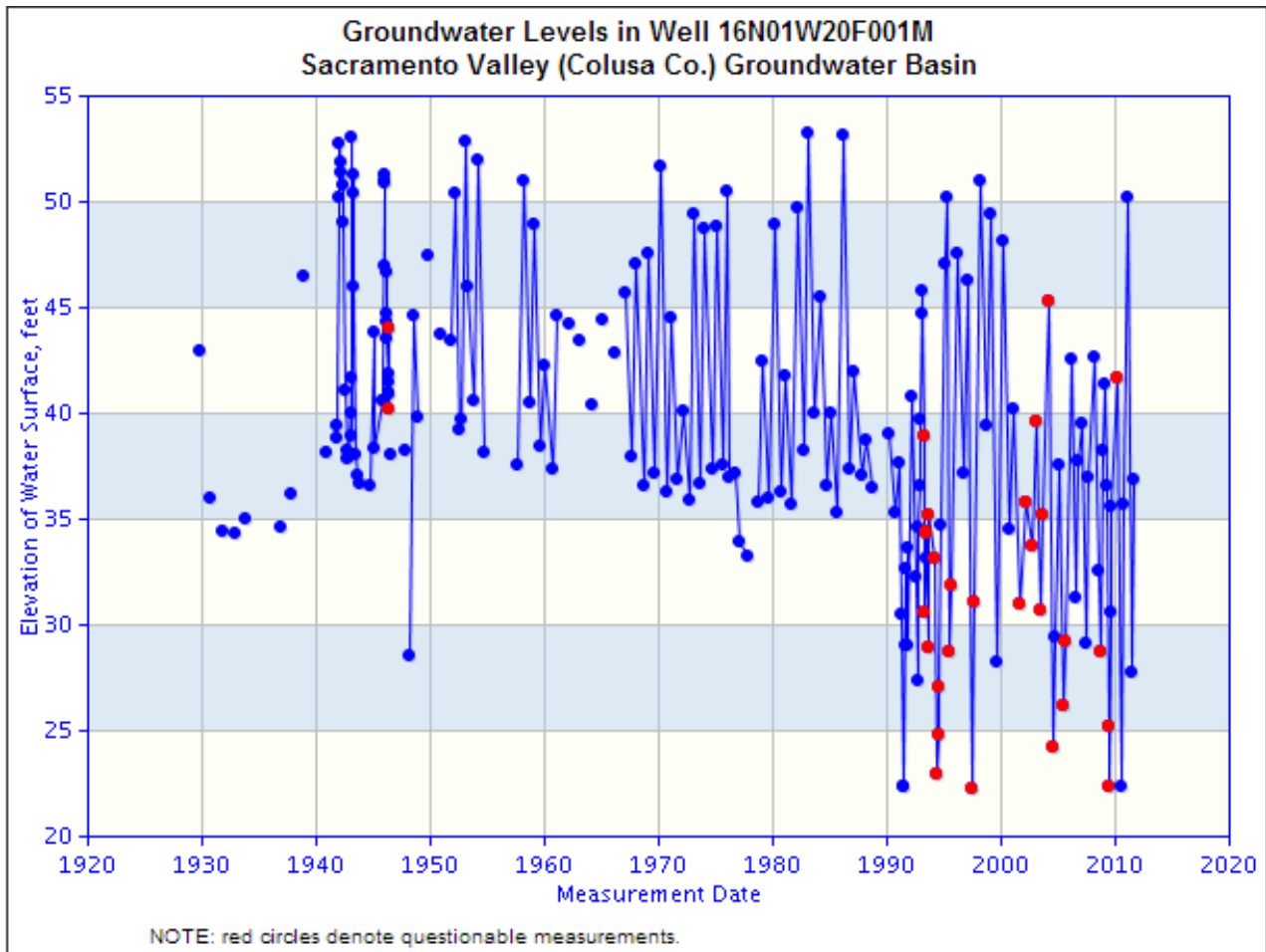
Conaway Preservation Group
State Well ID 10N03E32E001M



Source: DWR's CASGEM website.

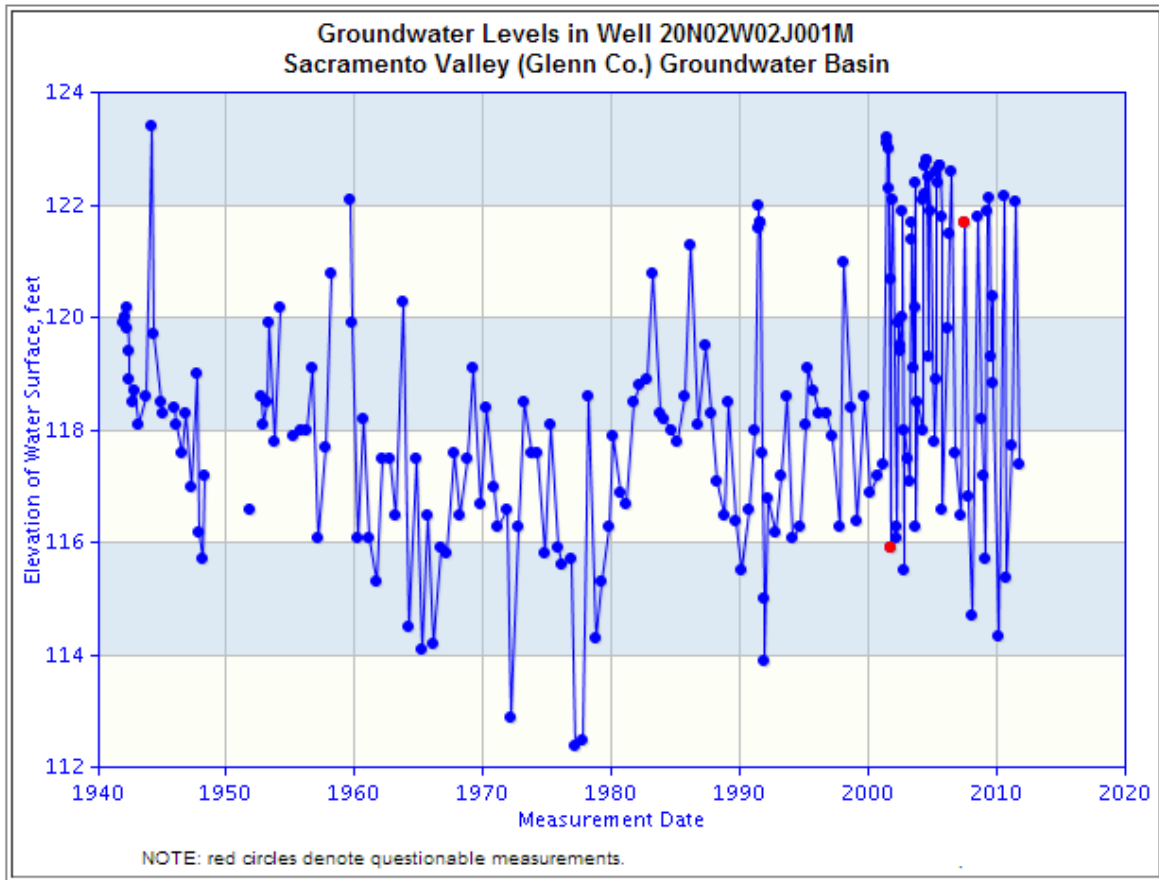
Note: Well number in the title of the figure is the CASGEM Well Number.

Eastside Mutual Water Company
State Well ID 16N01W20F001M



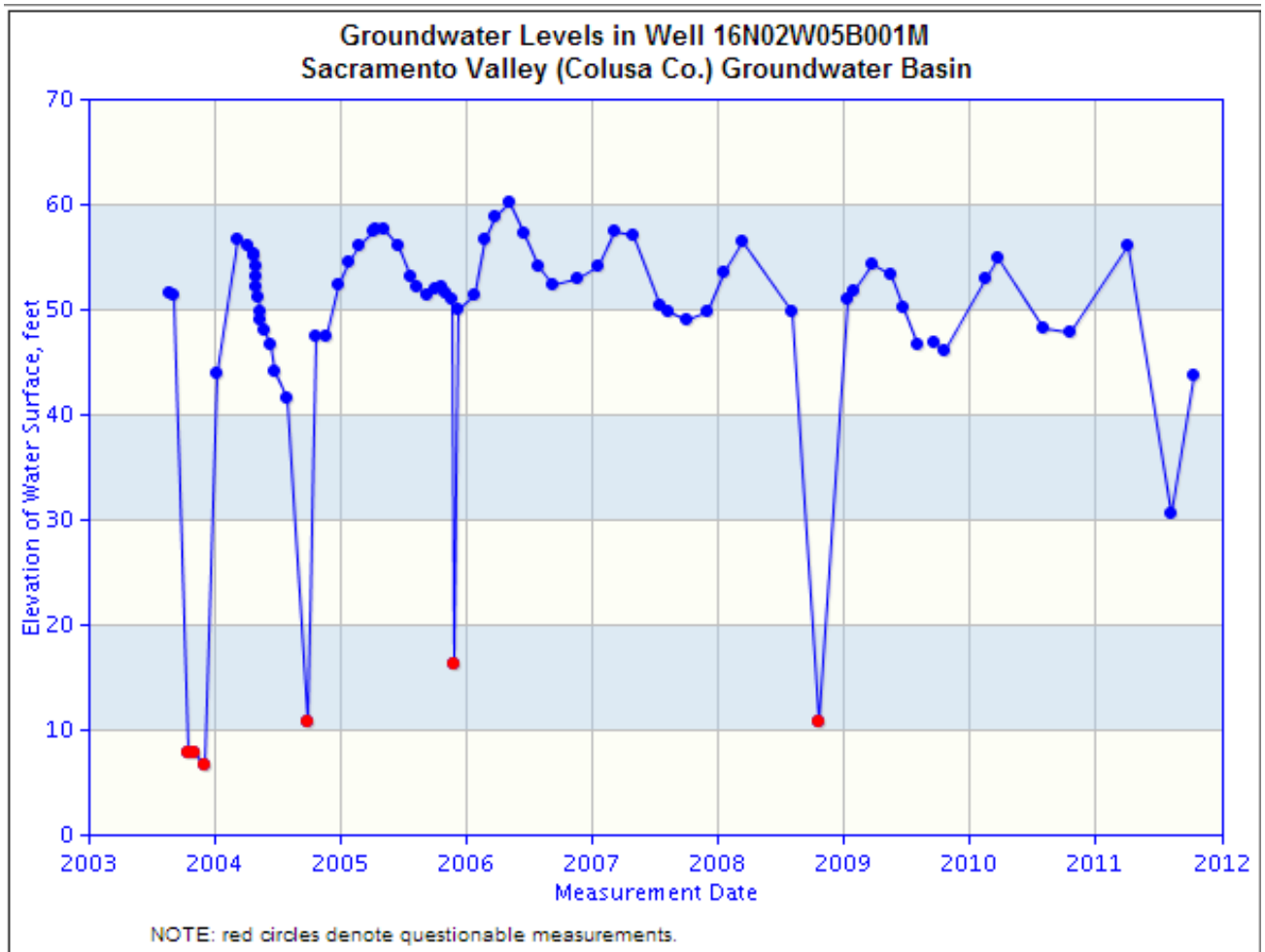
Source: DWR's Water Data Library

Glenn-Colusa Irrigation District
State Well ID 20N02W02J001M



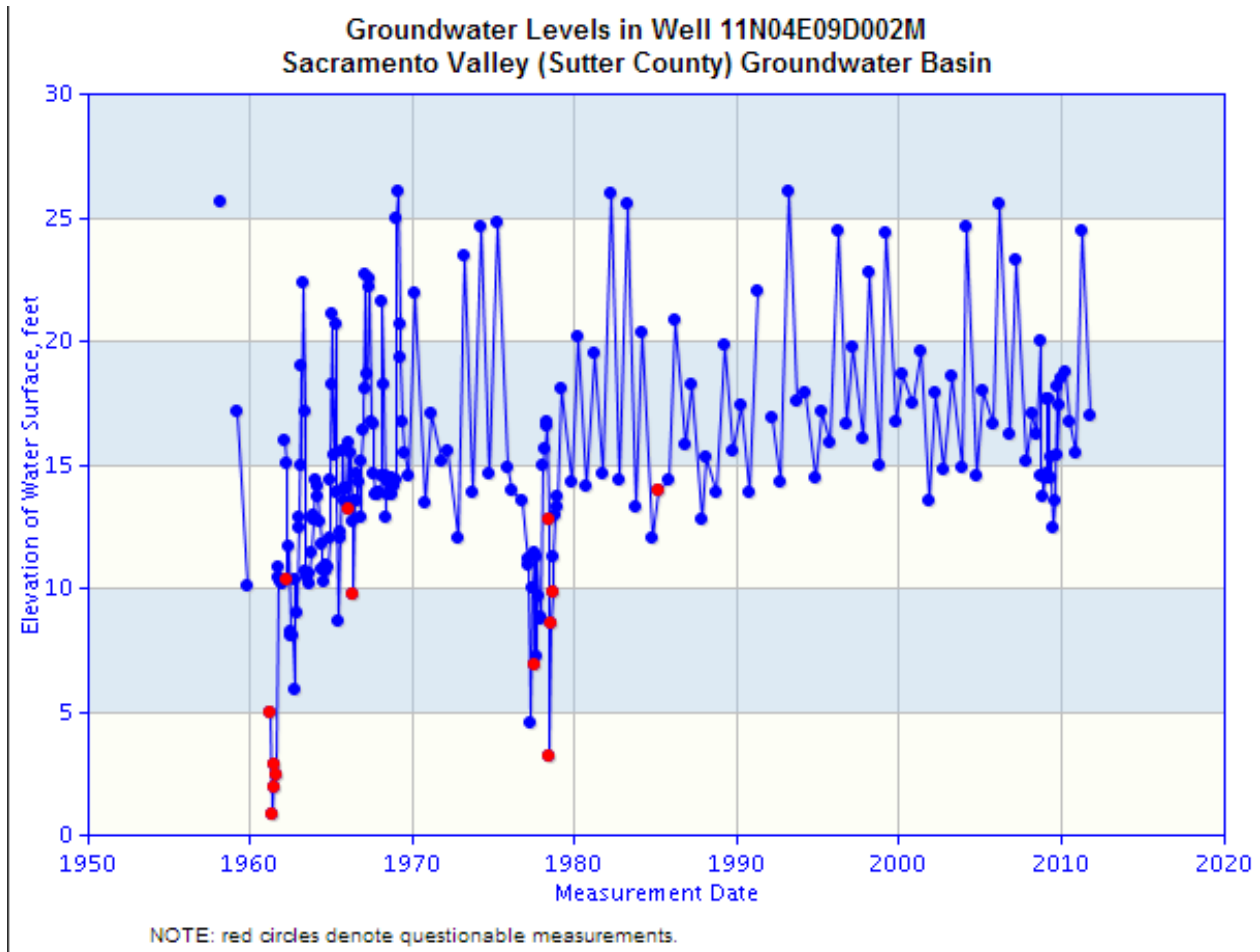
Source: DWR's Water Data Library

Maxwell Irrigation District
State Well ID 16N02W05B001M



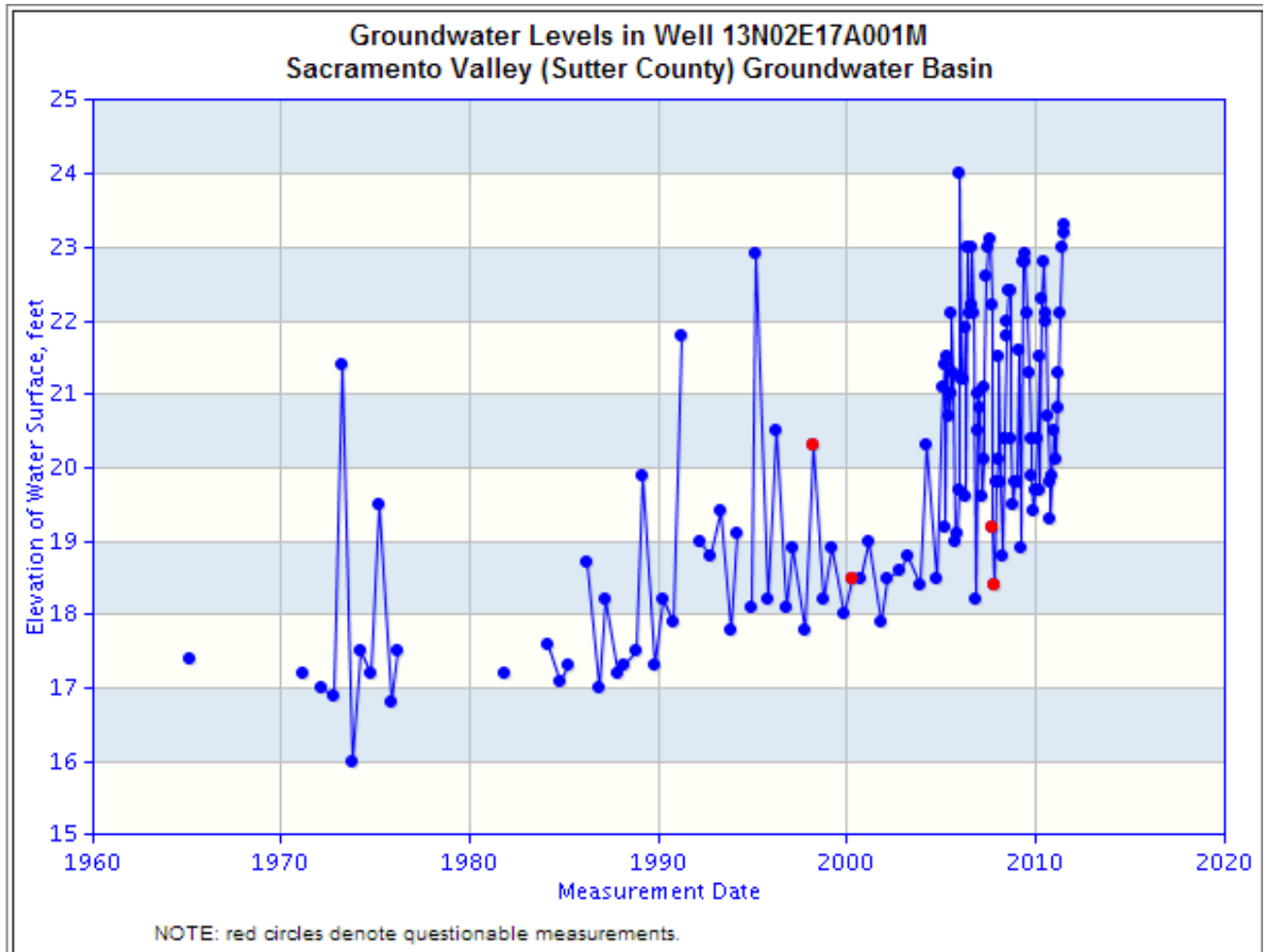
Source: DWR's Water Data Library

Natomas Central Mutual Water Company
State Well ID 11N04E09D002M



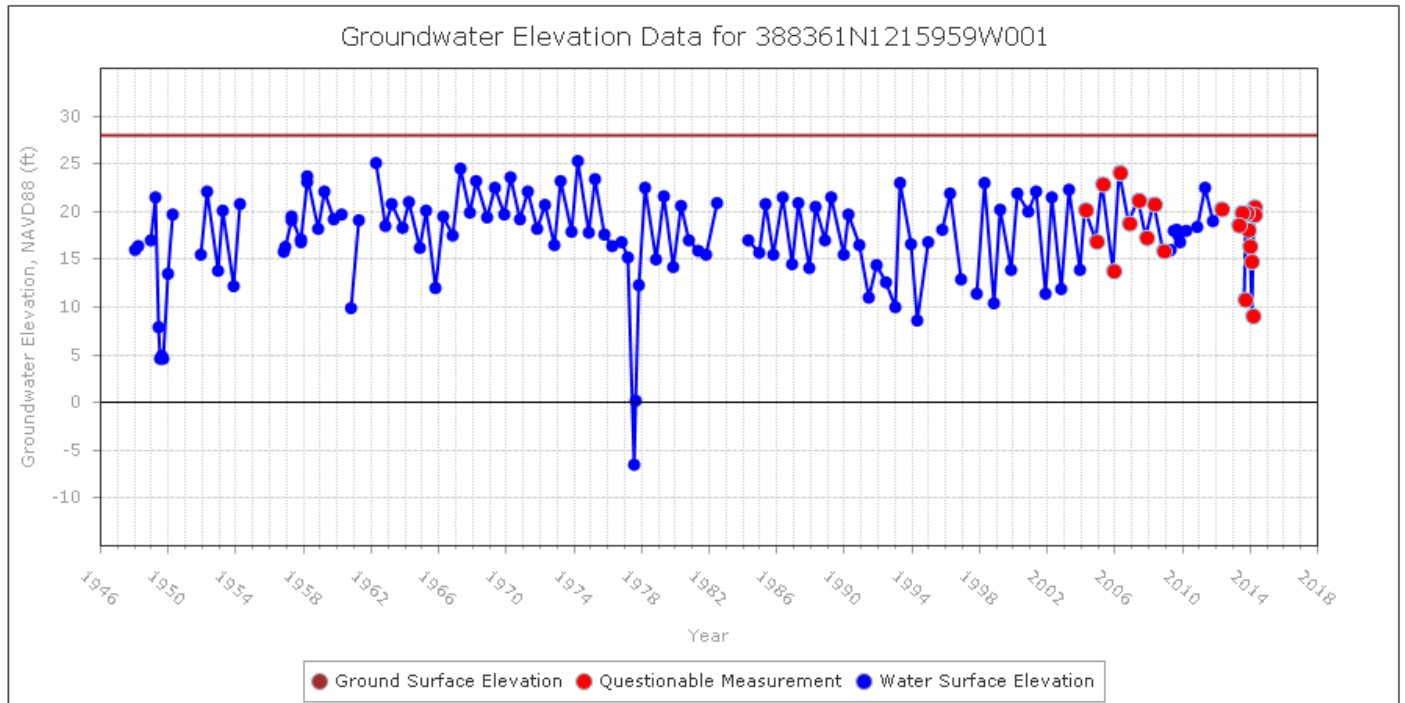
Source: DWR's Water Data Library

Pelger Mutual Water Company
State Well ID 13N02E17A001M



Source: DWR's Water Data Library

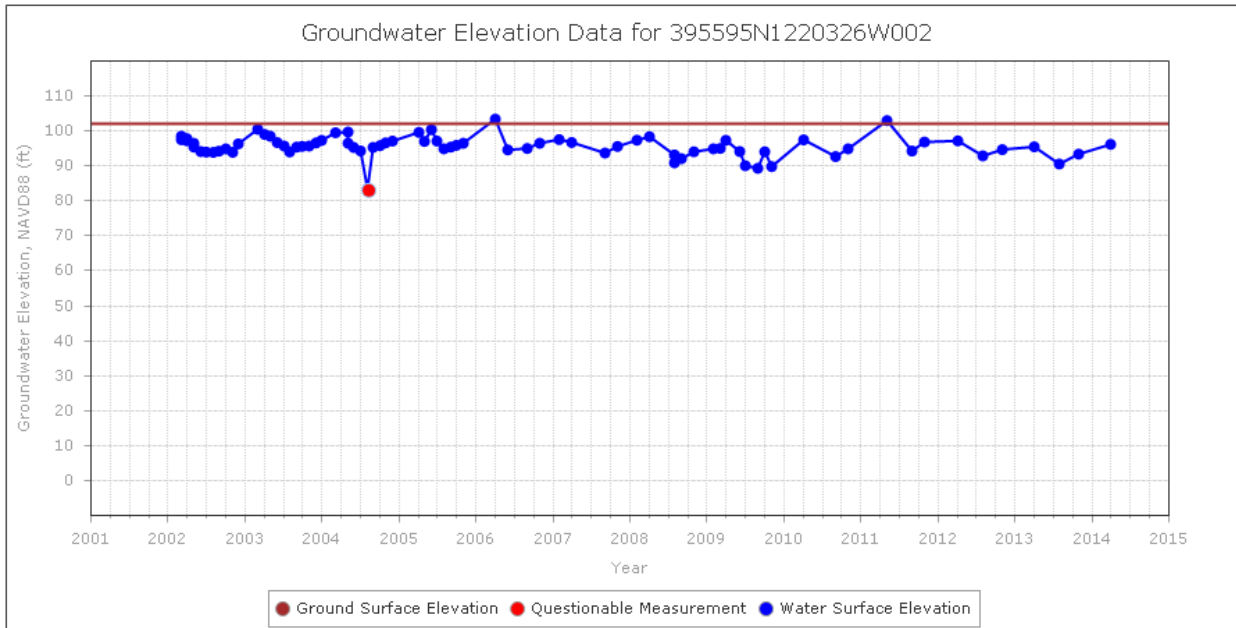
Pleasant Grove-Verona Mutual Water Company
State Well ID 11N03E01D001M



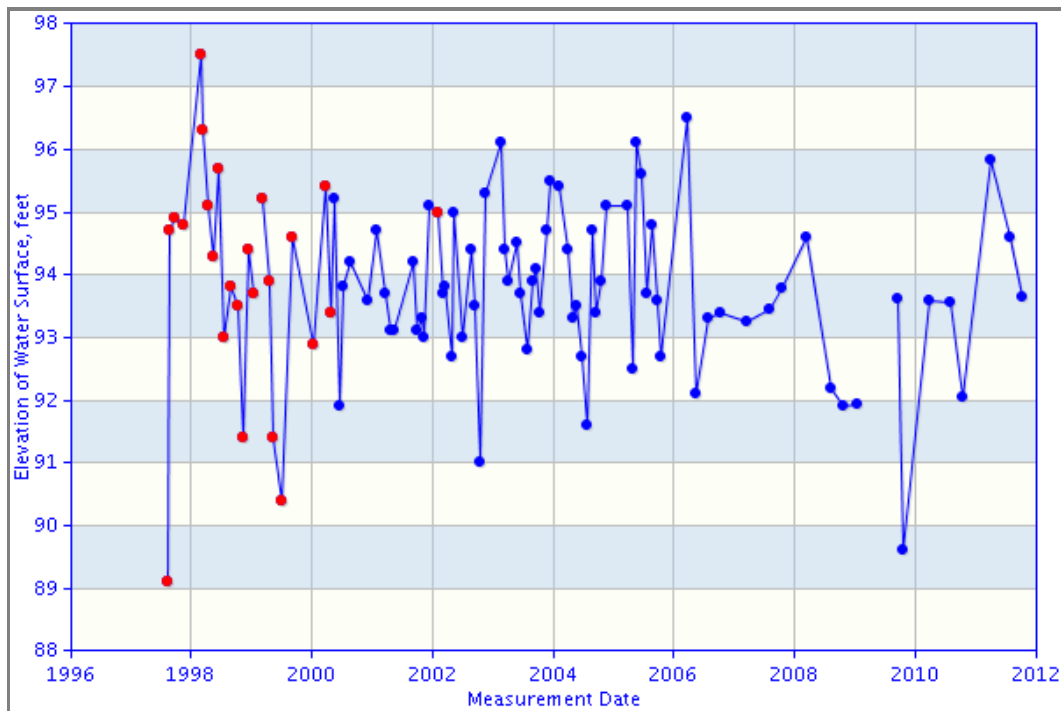
Source: DWR's CASGEM website.

Note: Well number in the title of the figure is the CASGEM Well Number.

Princeton-Codora-Glenn Irrigation District and Provident Irrigation District State Well ID 20N02W25F002M

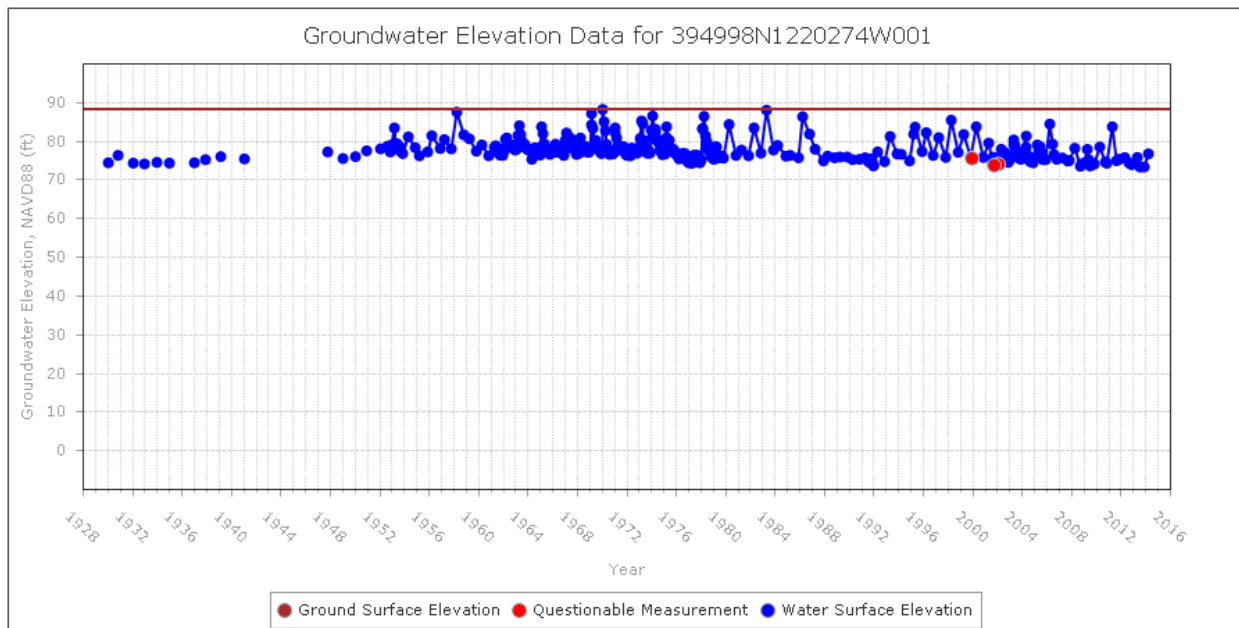


State Well ID 20N02W34J001M



Source: DWR's Water Data Library

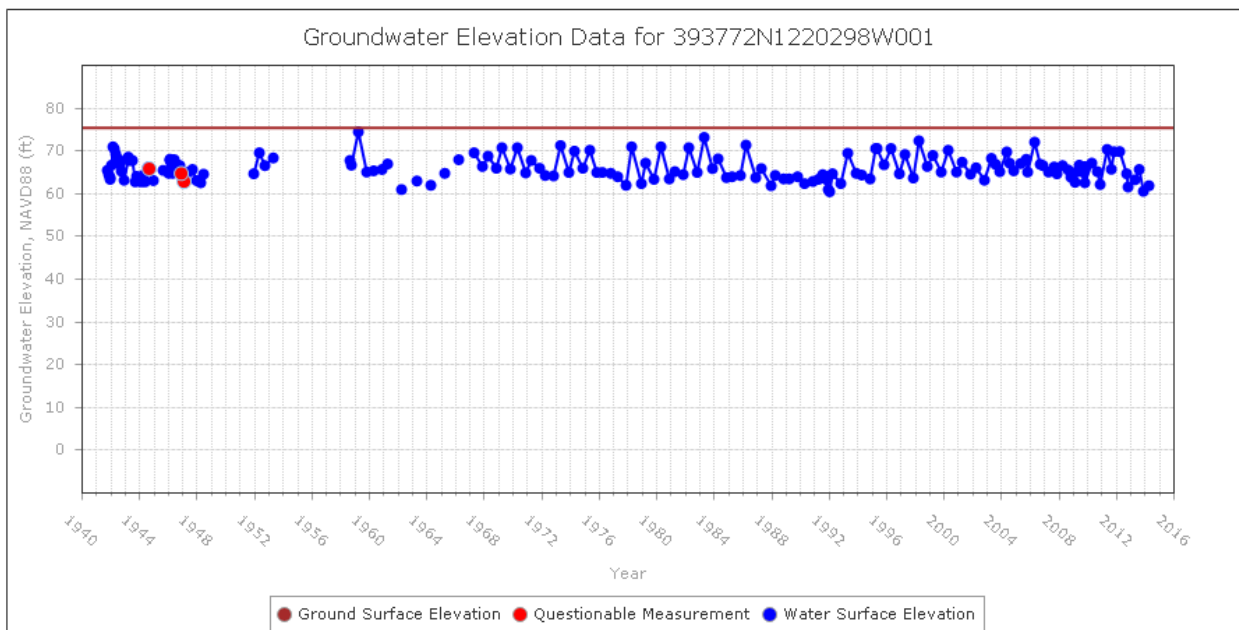
State Well ID 19N02W13J001M



Source: DWR's CASGEM website.

Note: Well number in the title of the figure is the CASGEM Well Number.

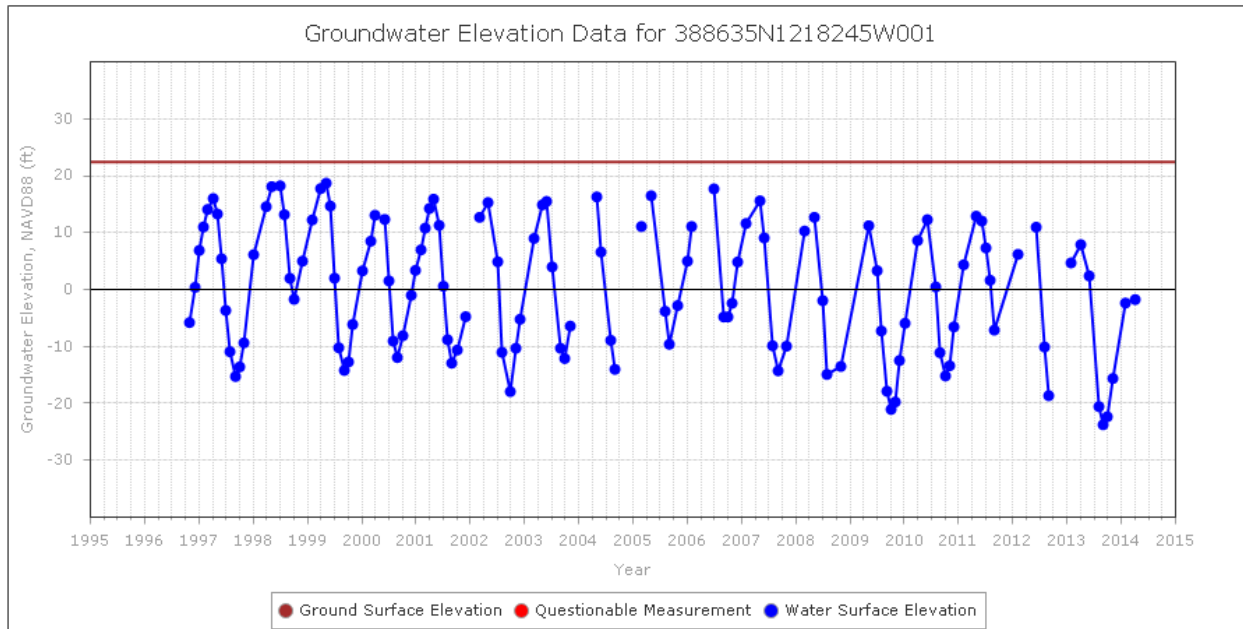
State Well ID 19N02W13J001M



Source: DWR's CASGEM website.

Note: Well number in the title of the figure is the CASGEM Well Number.

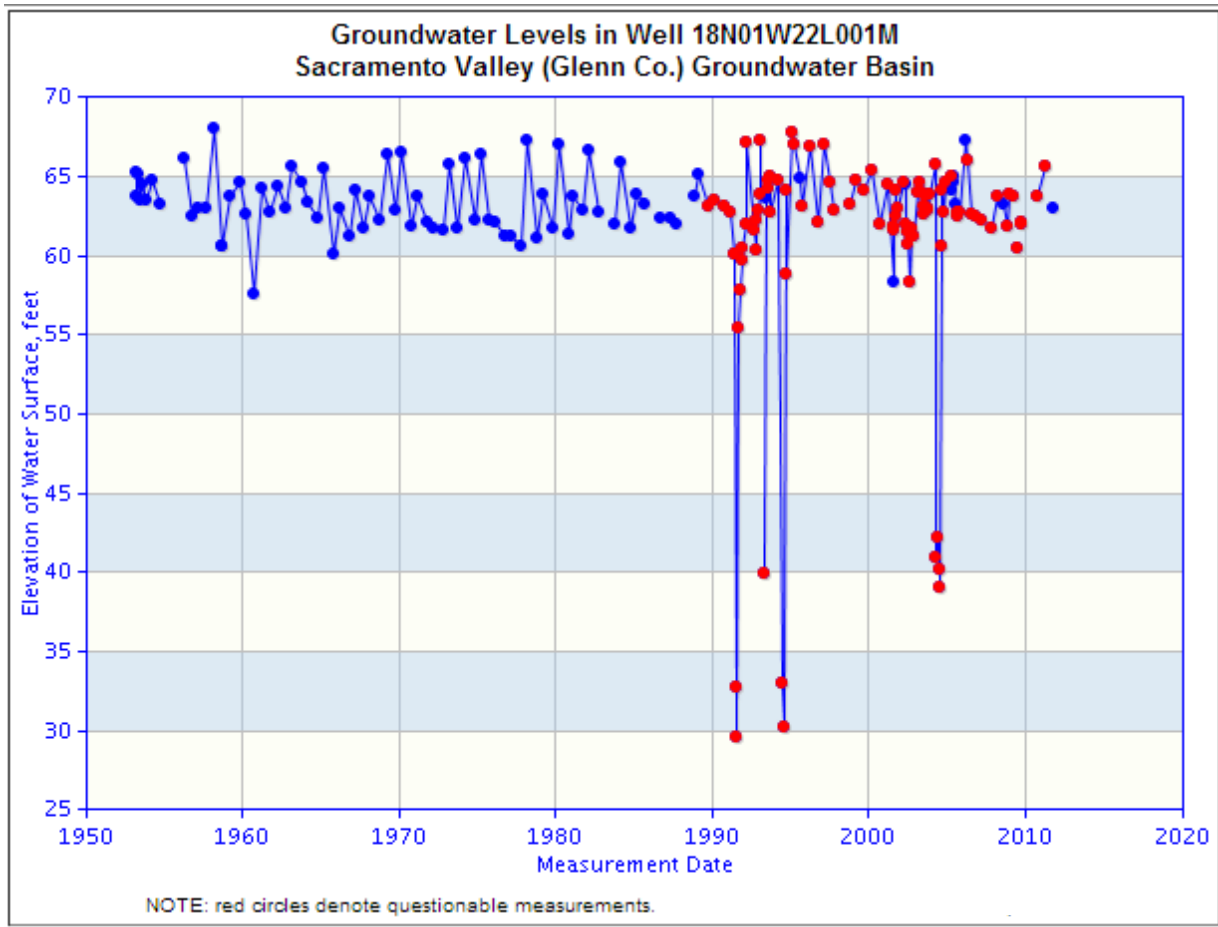
Reclamation District 108
State Well ID 12N01E26A001M



Source: DWR's CASGEM website.

Note: Well number in the title of the figure is the CASGEM Well Number.

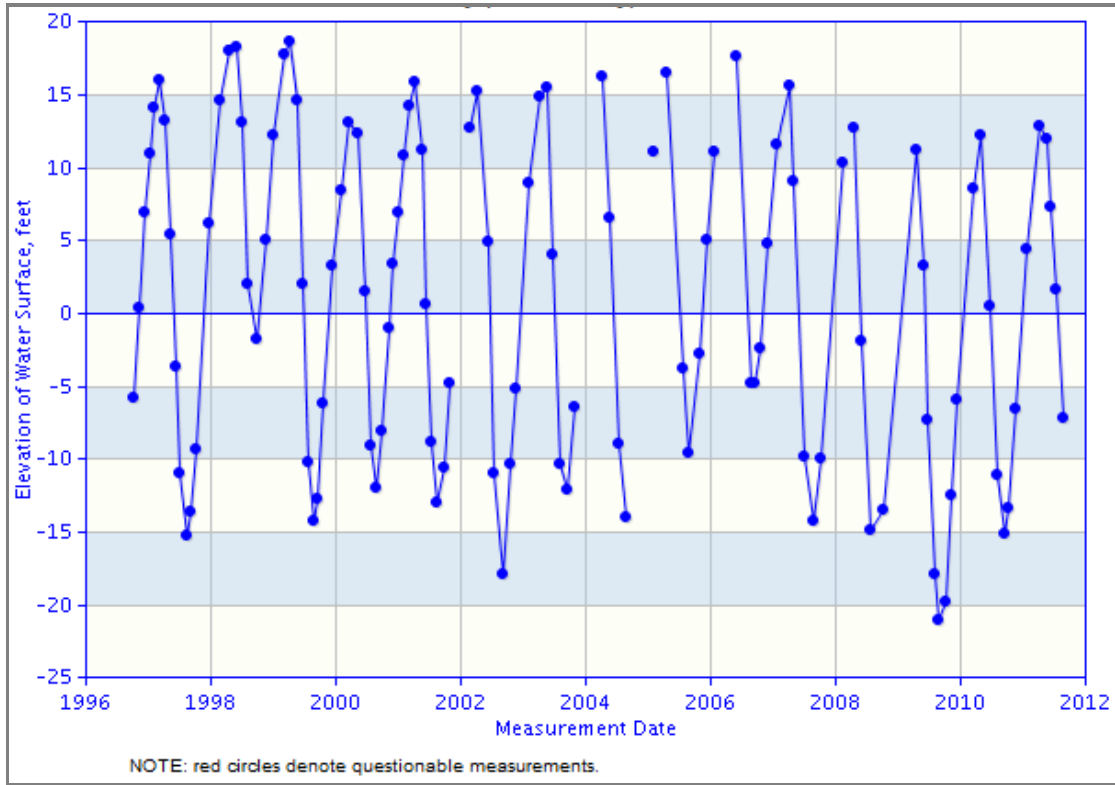
Reclamation District 1004
State Well ID 18N01W22L001M



Source: DWR's Water Data Library

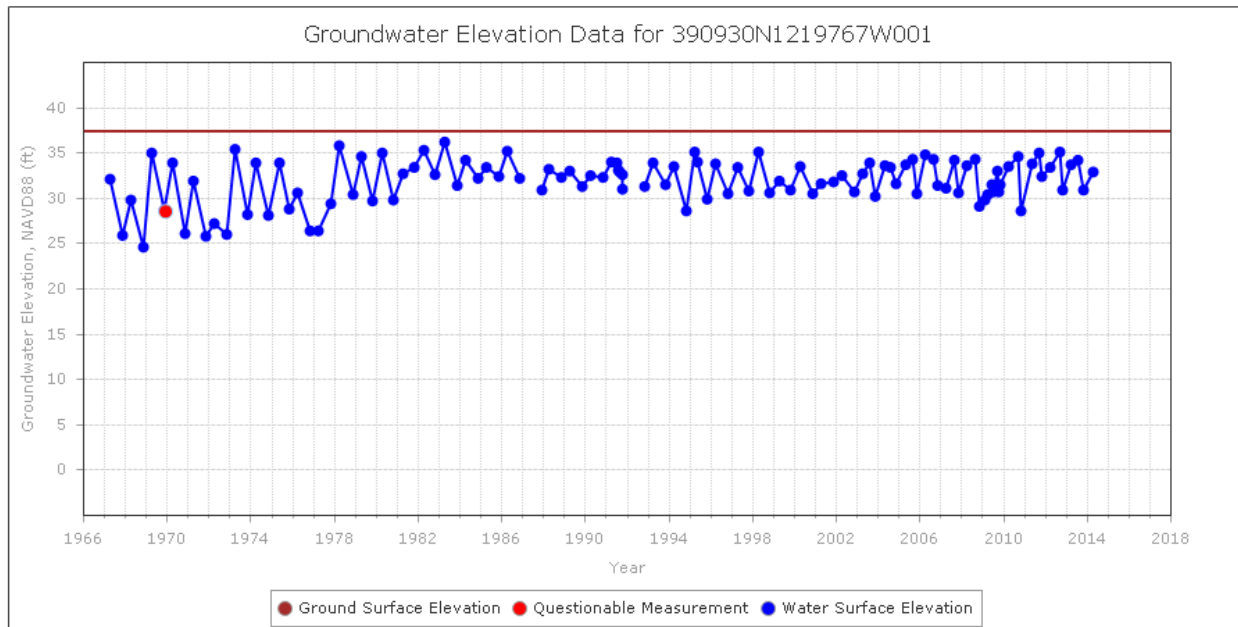
River Garden Farms

State Well ID 12N01E26A001M



Source: DWR's Water Data Library

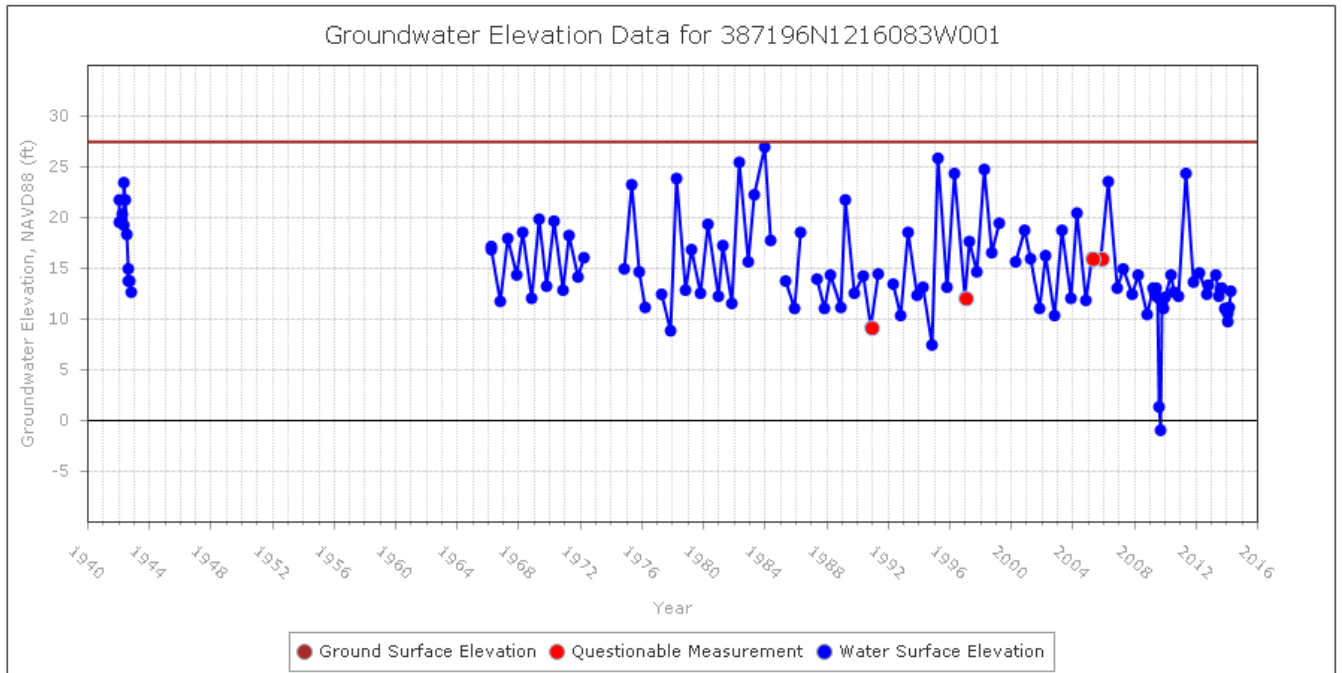
Sycamore Mutual Water Company
State Well ID 14N01W04K003M



Source: DWR's CASGEM website.

Note: Well number in the title of the figure is the CASGEM Well Number.

Te Velde Revocable Family Trust
State Well ID 10N03E14C001M



Source: DWR's CASGEM website.

Note: Well number in the title of the figure is the CASGEM Well Number.