

Appendix M

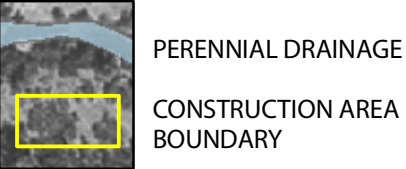
Waters of the United States Documented at Battle Creek Project Sites

This new appendix presents waters of the United States that were documented at two new sites (Jeffcoat and Willow Springs mitigation sites), as well as waters of the United States information documented at the Asbury Diversion Dam project site. The new information presented in this appendix does not necessarily require recirculation for public comment. However, Reclamation and the State Water Board have deemed that the new information presented in this appendix supports significant new information presented in this Draft SEIS/REIR (see Impact 4.1-8 in Section 4.1, Fish, of this document). As a result, the lead agencies have included this appendix here for public comment. The complete new appendix will be presented in the Final EIS/EIR.

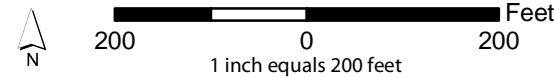
H:\GIS\Projects\battle_creek\03035.03\arcmap\SEIS_maps_11_04\appendix_M_ADD.mxd 02.15.05



FIGURE M-10
WATERS OF THE UNITED STATES
BATTLE CREEK SALMON AND
STEELHEAD RESTORATION PROJECT
ASBURY PUMP HOUSE AND DIVERSION DAM



TYPE	AREA (ACRES)
PERENNIAL DRAINAGE	1.28
TOTAL AREA AFFECTED	
1.28	



SOURCE: USGS DOQQ 1998

Prepared for the U.S. Department of Interior,
Bureau of Reclamation and the
State Water Resources Control Board
by Jones & Stokes
February 2005

H:\GIS\Projects\battle_creek\0303503\arcmap\SEIS_maps_11_04\appendix_M_JEW.mxd 02.15.05

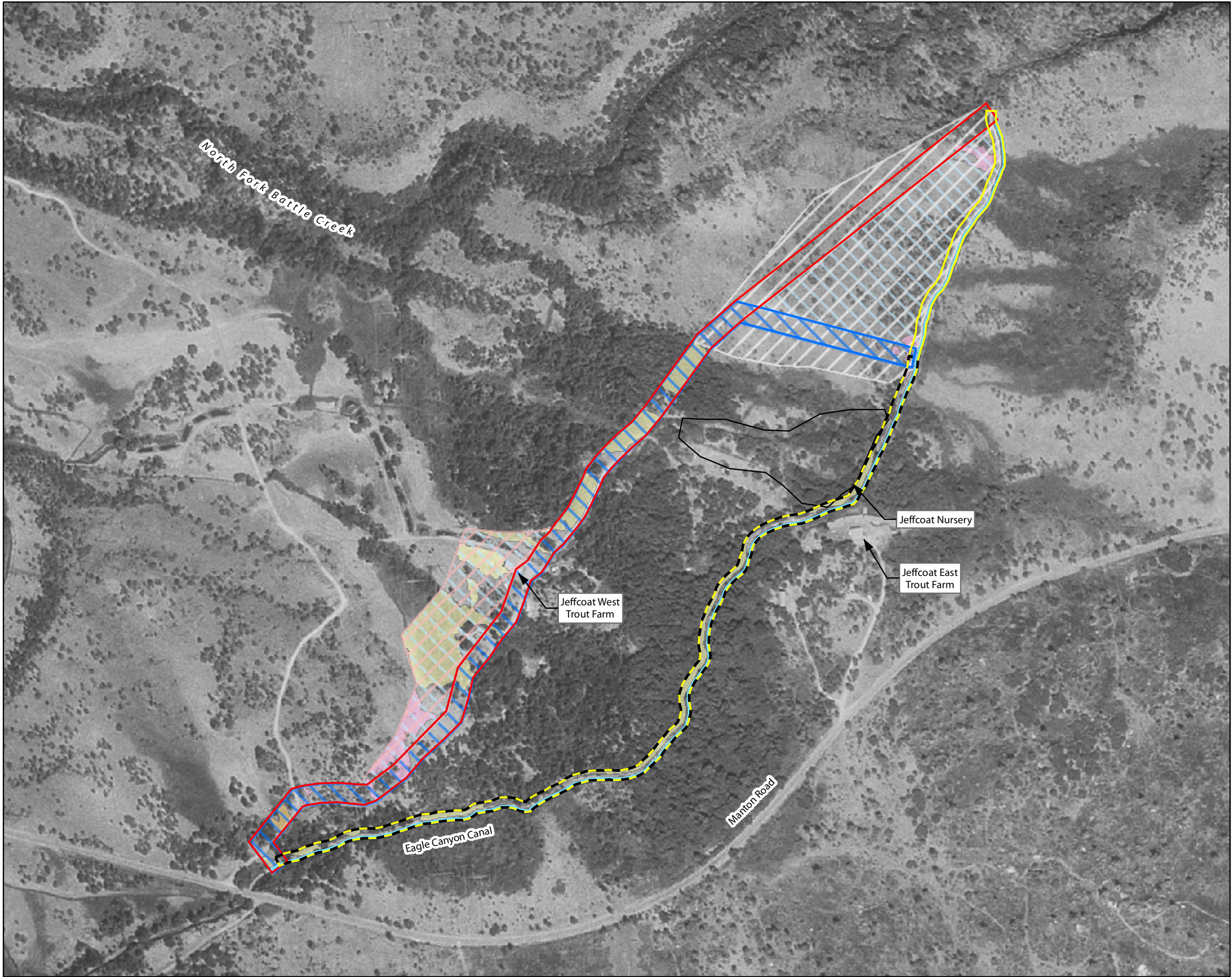


FIGURE M-11

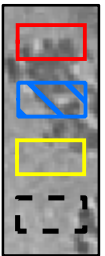
WATERS OF THE UNITED STATES
BATTLE CREEK SALMON AND
STEELHEAD RESTORATION PROJECT
JEFFCOAT MITIGATION SITE

WETLANDS AND OTHER WATERS

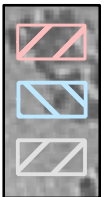


- EMERGENT WETLANDS
- EMERGENT SCRUB WETLANDS
- SEASONAL WETLANDS
- PERENNIAL DRAINAGE

CONSTRUCTION BOUNDARIES



- PROPOSED
ALTERNATIVE A
- PROPOSED
ALTERNATIVE B
- ALTERNATIVE C
- ALTERNATIVE D



- POTENTIALLY AFFECTED
BY ALTERNATIVE A
- POTENTIALLY AFFECTED
BY ALTERNATIVE B
- POTENTIAL
STAGING AREA

HABITAT TYPE	AREA (ACRES) ¹	
	ALT. A ²	ALT. B ²
EMERGENT WETLANDS	0.13	0.13
EMERGENT SCRUB WETLANDS	1.40	1.40
SEASONAL WETLANDS	0.63	0.63
PERENNIAL DRAINAGE	0.01	0.01
TOTAL AREA AFFECTED	2.17	2.17
HABITAT TYPE		
	ALT. C	ALT. D
EMERGENT WETLANDS	0	0
EMERGENT SCRUB WETLANDS	0.97	0.97
SEASONAL WETLANDS	0.44	0.44
PERENNIAL DRAINAGE	0.67	0.52
TOTAL AREA AFFECTED	2.08	1.93



400 0 400 Feet
1 inch equals 400 feet

SOURCE: USGS DOQQ 1998

NOTES: ¹ ACREAGE CALCULATIONS FOR EACH ALTERNATIVE INCLUDE THE ENTIRE POTENTIAL STAGING AREA; HOWEVER, THE FINAL STAGING AREA IS EXPECTED TO COVER ONLY 3 ACRES OF THE CROSS-HATCHED AREA

² ACREAGES WERE BASED ON THE PROPOSED ALIGNMENTS FOR ALTERNATIVES A AND B; HOWEVER, THE ACTUAL ALIGNMENT(S) COULD POTENTIALLY OCCUR IN AND AFFECT HABITAT ANYWHERE WITHIN THE CROSS-HATCHED AREA IDENTIFIED AS "POTENTIALLY AFFECTED BY ALTERNATIVE A/B"

Prepared for the U.S. Department of Interior,
Bureau of Reclamation and the
State Water Resources Control Board
by Jones & Stokes
February 2005

F:\GIS\Projects\battle_creek\03035\03\arcmap\SEIS_maps_11_04\appendx_M_W5.mxd 02.15.05

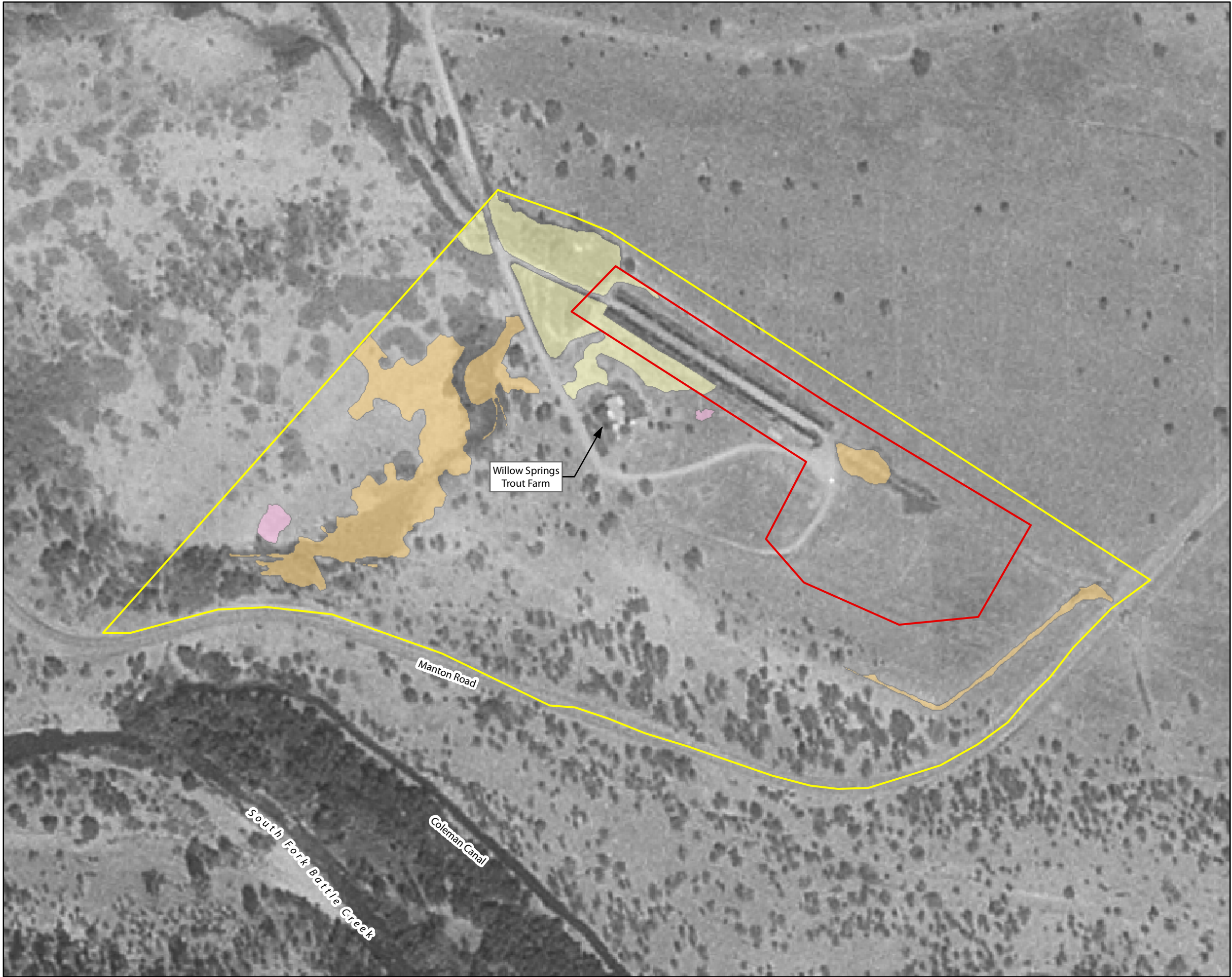
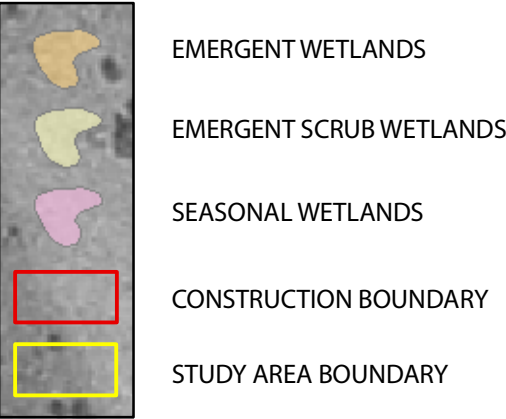
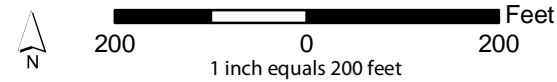


FIGURE M-12

WATERS OF THE UNITED STATES
BATTLE CREEK SALMON AND
STEELHEAD RESTORATION PROJECT
WILLOW SPRINGS MITIGATION SITE
OPTION A—WATER TREATMENT FACILITY



TYPE	AREA (ACRES) ¹
EMERGENT WETLANDS	0.14
EMERGENT SCRUB WETLANDS	0.31
TOTAL AREA AFFECTED	0.45



SOURCE: USGS DOQQ 1998

NOTES: ¹ AREA AFFECTED WITHIN THE CONSTRUCTION BOUNDARY

Prepared for the U.S. Department of Interior,
Bureau of Reclamation and the
State Water Resources Control Board
by Jones & Stokes
February 2005