

to such a district. Therefore, evaluation for National Register and California Register eligibility was assessed by the sub-consultant on an individual basis.

DETERMINATION OF EFFECT

For purposes of the National Historic Preservation Act, Section 106 consultation, “effect” is defined as “alteration to the characteristics of a historic property qualifying it for inclusion in or eligibility for the National Register [36 CFR Part 800.16(I)].

While alteration of the setting of an archaeological site eligible for the National Register only for its information potential may not affect the site’s significant characteristics, alteration of a property’s location (*e.g.*, removing or damaging all or part of the site) may have a significant adverse effect. Adverse effects may include reasonably foreseeable effects caused by an undertaking that may occur later in time or removed by distance or cumulative. Adverse effects are found when an undertaking “. . . may alter, directly or indirectly, any of the characteristics of a historic property that qualify the property for inclusion in the National Register in a manner that would diminish the integrity of the property’s location, design, setting, materials, workmanship, feeling, or association” (36 CFR Part 800.5(a)(1).

Under current CEQA regulations, “A project with an effect that may cause a substantial adverse change in the significance of a historical resource is a project that may have a significant effect on the environment [Public Resources Code §15064.5(b)]. The significance of a historical resource is materially impaired when a project demolishes or materially alters in an adverse manner those physical characteristics of a resource that convey its historical significance, unless the evidence demonstrates that the resource is not historically or culturally significant [Public Resources Code §15064.5(b)(2)(A-C)].

No historic properties, historical resources or “unique archaeological resources” were identified during the present study. As such, the sub-consultant recommends a determination of no historic properties affected (36 CFR Part 800.4(d)(1). As it is possible for a cultural resource to be eligible for the California Register of Historical Resources and not eligible for the National Register, the sub-consultant also evaluated cultural resources for the California Register. In addition, archaeological resources were considered for their eligibility as “unique archaeological resources.” However, no historical resources were identified by the sub-consultant. Under CEQA’s Appendix G, “cultural resources” include unique paleontological resources and unique geological features. It is the sub-consultant’s opinion that no unique paleontological or geological resources will be affected. No historical resources or “unique archaeological resources” were identified within the APE.

RECOMMENDATIONS

Although no Native American artifacts or cultural deposits were found during the field inspection, there are verbal and archival reports of isolated Native American artifacts found in the vicinity of Potential Staging Area 3 (PSA-3), which lies adjacent to the Colusa Highway and Traynor lateral crossing, and in the general vicinity of proposed new canal construction for Alternative-2 and Alternative 3, the Cassady lateral alternative. The sub-consultant recommends that an archaeologist who meets the Secretary of the Interior's Professional Qualifications Standards in prehistoric archaeology monitor any ground disturbing activities in both areas, as the probability of discovering sub-surface cultural deposits may be greater in these two areas than in the remainder of the APE.

It is the sub-consultant's opinion that there is a low probability for encountering buried archaeological resources across the APE once ground disturbance is underway—with the possible exception of the above two examples. However, in the unlikely event that buried archaeological resources are encountered during such activities, the sub-consultant recommends that an archaeologist meeting the Secretary of the Interior's professional qualifications standards in prehistoric or historical archaeology, as appropriate, should assess the importance of any find and recommend a course of action that would mitigate any adverse effects, if appropriate.

Under §7050.5 of California's Health and Safety Code, if human remains are encountered, all work must cease in the immediate vicinity of the find and the County Coroner must be notified. No further disturbance of the find shall occur until the coroner has made the necessary findings as to origin and disposition of the remains and any grave goods pursuant to Public Resources Code §5097.98. If the coroner determines that no investigation of the cause of death is required and if the remains are of Native American origin, the coroner will notify the Native American Heritage Commission, which in turn will inform a most likely descendant. The descendant will then recommend to the landowner appropriate disposition of the remains and any grave goods.

If the project area is expanded, the consultant recommends that a cultural resources inventory and evaluation shall be conducted for the expanded area(s) not encompassed by the present study.

REFERENCES CITED

Bennyhoff, J.A.

- 1994 Variation within the Meganos Culture. In *Toward a New Taxonomic Framework for Central California Archaeology*, edited by R.E. Hughes, pp. 81-92. Contributions of the University of California Archaeological Research Facility 52. Berkeley.

Biggs-West Gridley Water District Board

- 1983 *Report 1943-1983*. Special Collections, California State University Library, California State University, Chico.

Burnett, J. L. and C. W. Jennings

- 1962 *Geologic Map of California: Chico Sheet*. California Division of Mines and Geology, Sacramento.

California Department of Transportation

- 1990 *Historic Highway Bridges of California*. California Department of Transportation, Sacramento.

California Office of Historic Preservation

- 1995 *Instructions for Recording Historical Resources*. Office of Historic Preservation, Sacramento.

CH2MHill

- 2009 *Design Data Report for Conveyance of Refuge Water Supply to Gray Lodge Wildlife Area*. Submitted to the Mid-Pacific Region, Bureau of Reclamation. Copies available from the U.S. Department of the Interior, Bureau of Reclamation, Mid-Pacific Region, Sacramento.

Fredrickson, D. A.

- 1994 *Archaeological Taxonomy in Central California Reconsidered*. In *Toward a New Taxonomic Framework for Central California Archaeology*, edited by R. E. Hughes, pp. 90-103. Contributions of the University of California Archaeological Research Facility 52. Berkeley.

Golden Hills Consulting

- 2008 *Cultural Resources Reconnaissance Survey, Gray Lodge Wildlife Area Field 93, Gridley, Butte County, California*. Submitted to Ducks Unlimited, Inc. Copies available from the Northeast Information Center, California State University, Chico.

Heizer, R. F.

- 1949 *The Archaeology of Central California 1: The Early Horizon*. Anthropological Records 12:1. University of California Press, Berkeley.

Hinds, N.E.A.

- 1952 *Evolution of the California Landscape*. Department of Natural Resources, Division of Mines Bulletin 158. San Francisco.

Johnson, P.

- 1978 *Patwin*. In *California*, edited by R.F. Heizer, pp. 350-360. Handbook of North American Indians, vol. 8, W.C. Sturtevant, general editor, Smithsonian Institution, Washington, D.C.

- JRP Historical Consulting Services and California Department of Transportation
2000 Water Conveyance Systems in California: Historic Context Development and Evaluation Procedures. Manuscript on file, Cultural Studies Office, California Department of Transportation, Sacramento.
- Kowta, M.
1988 The Archaeology and Prehistory of Plumas and Butte Counties, California: An Introduction and Interpretive Model. Manuscript on file, Northeast Information Center, California State University, Chico.
- Kroeber, A. L.
1925 *Handbook of the Indians of California*. Bureau of American Ethnology Bulletin 78. Smithsonian Institution, Washington DC.
- Mansfield, G.
1918 *History of Butte County California with Biographical Sketches*. Historic Records Company, Los Angeles.
- McGie, J. F.
1982 *History of Butte County*. California Board of Education, Oroville.

1986 *A History of Irrigation in Butte, Sutter, Glenn and Colusa Counties: Butte County*. Butte County Joint Water District Board, Oroville.
- Moratto, M. J.
1984 *California Archaeology*. Academic Press, New York.
- National Park Service
1991a How to Apply the National Register Criteria for Evaluation. National Register Bulletin 15. United States Department of the Interior, National Park Service, Washington, D.C.

1991b Guidelines for Completing National Register of Historic Places Forms, Part A. *National Register Bulletin* 16. United States Department of the Interior, National Park Service, Washington, D.C.
- Polk, M. C. And B. L. McCoy
1920 Official Map of Butte County, California. County of Butte, Oroville.
- Riddell, F. A.
1978 Maidu and Konkow. In *California*, edited by R.F. Heizer, pp. 370-386. *Handbook of North American Indians*, vol. 8, W.C. Sturtevant, general editor, Smithsonian Institution, Washington, D.C.

Ritter, E. W., B. W. Hatoff and L. A. Payen

1976 Chronology of the Farmington Complex. *American Antiquity* 41(3):334-341.

Townsend, J., J. H. Sprinkle, Jr. and J. Knoerl

1993 *Guidelines for Evaluating and Registering Historical Archaeological Sites and Districts*. National Register Bulletin 36. National Park Service, Washington, D.C.

Wagner, D. L., C. W. Jennings, T. L. Bedrosian and E. L. Bortugno

1981 *Geologic Map of the Sacramento Sheet, California*. California Division of Mines and Geology, Sacramento.

APPENDIX A: STATEMENT OF QUALIFICATIONS

INTRODUCTION

Ric Windmiller, Consulting Archaeologist, provides both public and private sector clients with services in archaeology, paleontology and cultural resources management.

The business' principal, Ric Windmiller, is experienced in meeting the cultural resources requirements of the National Environmental Policy Act (NEPA), Section 106 of the National Historic Preservation Act, California Environmental Quality Act (CEQA) and other environmental laws and regulations. Since 1970, Ric Windmiller has directed both small and large-scale archaeological research projects in California, Nevada, Arizona, Colorado, New Mexico, Canada and Mexico. Ric Windmiller's years of experience exceed many times over the Secretary of Interior's standards that define the minimum professional qualifications for experts in prehistoric and historical archaeology.

Prior to opening his own consulting business, Ric Windmiller was a staff archaeologist with the Arizona State Museum, University of Arizona and later, the University of Colorado. Ric Windmiller was also served as staff archeologist with the National Park Service, Western and Southwest regions. Ric Windmiller is a Registered Professional Archaeologist. Windmiller holds Cultural Resource Use Permit CA-05-10 for Bureau of Land Management lands in California and Nevada, and Nevada Antiquities Permit No. 381 to conduct preliminary and/or extensive survey and excavations of archaeological, paleontological, speleological or historic sites in the State of Nevada.

The consultancy of Ric Windmiller, Consulting Archaeologist, provides expert services in the fields of archaeology, history, architectural history and paleontology to meet planning, monitoring and mitigation requirements.

SERVICES

- **Records Search:** To identify any cultural resources known to occur on and near the client's project, and background research needed to assess the importance of those resources. Cultural resources commonly include prehistoric Indian sites, historic buildings and ruins, and places of ethnic importance such as Native American religious sites.
- **Field Survey:** On-the-ground, systematic examination of the client's project area to discover unrecorded cultural and paleontological resources. Survey is also essential to verify the location and condition of sites, objects, buildings, structures and districts previously recorded and to update other information about them.
- **Test Excavations:** Limited scientific excavation is sometimes necessary to determine the boundaries, depth and importance of an archaeological site or to retrieve paleontological (fossil) finds..
- **Analysis and Report Preparation:** Using high professional standards, analysis and report preparation are undertaken as integral parts of archival research and field work.

REPRESENTATIVE PROJECTS

Mixed Use Suburban Development/Placer Vineyards Specific Plan. Archaeological resources inventory and evaluation for federal wetlands permitting and EIR. Project site of 5,000 acres, Placer County, California

General Plan and General Plan Update/City of Elk Grove; City of Manteca. Overview of cultural resources (archaeology and architectural history) and historic preservation issues—Sacramento and San Joaquin counties, California.

Specific Plan EIRs/City of Hanford, City of Manteca and City of Turlock. Cultural resources overview and analysis of archaeological and historic architectural preservation issues for two specific plans in Manteca, San Joaquin County, an industrial specific plan in Turlock, Stanislaus County and a downtown east precise plan in Hanford, Kings County, California.

Cultural Resources and Wireless Telecommunications Projects/GeoTrans, Inc. Historic building evaluations, archaeological surveys, construction monitoring for archaeological resources and records searches for wireless telecommunications projects in northern California focusing on the Bay Area (San Francisco and surrounding cities).

Residential Developments/Discovery Builders. Archaeological inventories, evaluations; historic buildings documentation and evaluations on various sites, Contra Costa County, California.

Commercial Development/City of Folsom . Archaeological test excavations, analysis, recovery and reburial of human remains with cooperation of the Sacramento County Coroner, Native American Heritage Commission and the commission's appointed "most likely descendant." Folsom, Sacramento County, California.

Pipeline Construction Monitoring/City of Stockton and Foothill Associates. On-site archaeological monitoring of large scale water and sewer pipeline construction in north Stockton, San Joaquin County, California.

Cultural Resource Section, EIRs/Pacific Municipal Consultants. Oak Canyon Ranch EIR, Calaveras County; Northstar Retreat Subdivision EIR, Placer County; Siller Ranch EIR archaeological and paleontological peer review, Placer County, California.

PARTIAL LIST OF RECENT REPORTS

- 2011 City of Hanford Downtown East Precise Plan: Background Report on Cultural Resources (in preparation).
- 2011 Archaeological Survey Report, Downtown Specific Plan Area Reitalization Project, CML 5383 (010), City of Cotati, Sonoma County, California (69pp). Submitted to Foothill Associates. Report on file, Northwest Information Center, Sonoma State University, Rohnert Park.
- 2011 Peer Review: Origer & Associates' report, "A Cultural Resources survey for the Newman Ridge Project, Amador County, California" by Eric Strother and Lauren Del Bondio (4 pp). Submitted to Raney Planning & Management, Inc. Copies available from Raney Planning & Management, Inc., Sacramento.
- 2011 Golden State Corridor Project Cultural Resources Assessment, Fresno County, California (170pp). Submitted to Quad Knopf. Report on file, Southern San Joaquin Valley

Information Center, California State University, Bakersfield.

- 2011 Historic Property Survey Report/Archaeological Survey Report, Sunrise Boulevard Complete Streets—Phase 1, City of Citrus Heights, Sacramento County, California (63pp). Submitted to Foothill Associates. Report on file, North Central Information Center, California State University, Sacramento.
- 2011 Historic Property Survey Report/Archaeological Survey Report, City of Roseville Fiber Optic Project, Roseville, Placer County, California (70pp). Submitted to City of Roseville. Report on file, North Central Information Center, California State University, Sacramento.
- 2011 Rancho del Oro: Cultural Resources Inventory and Evaluation, Granite Bay, Placer County, California (165pp). Submitted to Tsakopoulos Investments. Report on file, North Central Information Center, California State University, Sacramento.
- 2011 Silva Valley Parkway Interchange: Cultural Resources Inventory and Evaluation, El Dorado Hills, El Dorado County, California (273pp). Submitted to Mark Thomas Company. Report on file, North Central Information Center, California State University, Sacramento.
- 2011 Historic Property Survey Report/Archaeological Survey Report, Loomis Downtown Park, City of Loomis, Placer County, California. (92pp plus attachments). Submitted to 4LEAF, Inc. Report on file, North Central Information Center, California State University, Sacramento.

ASSOCIATES

Ken Finger, Ph.D., Paleontologist, U.C. Museum of Paleontology

Dan Osanna, M.A., Registered Professional Historian #572

TESTIMONIALS

"Let me begin by thanking you for the tremendous effort you put into the cultural resources background report for our city's general plan! Your work has come in quite handy as we develop our community's historic preservation plan."

—John Smoley
Planning Department
City of Elk Grove, CA

"Your firm and Mr. Windmiller are to be commended on the production of a thorough and well executed report."

—T.M. Bethea, Contracting Officer
U.S. Army Corps of Engineers, Sacramento CA

"Largely through the efforts of Ric Windmiller, (his client) the Archaeological Conservancy acquired the famous Borax Lake site in Lake County, California."

—William Wallace, Ph.D.
Editor, *TULARG REPORT*

"Your National Register nomination of the Borax Lake site was accepted. A lot of people made very nice comments about your work; it was well written and received high marks from the state review board."

—Mark Barnes, Ph.D., Archeologist
National Park Service, Atlanta, GA

"Please accept my thanks for your assistance in making the Sacramento District Corps of Engineers' *Earth Day Celebration* a success."

—Lee Foster, Archeologist
U.S. Army Corps of Engineers, Sacramento CA

"The Archaeological Survey Report is fine. Good detective work finding the site" (an archaeological site presumed destroyed and whose location was lost to archaeologists for more than 40 years).

—Daryl Noble, Associate Environmental Planner
Caltrans, District 3, Marysville, CA

APPENDIX B: RECORDS SEARCH RESULTS

This appendix may contain information on the specific locations of archaeological resources. This information is not for publication or release to the general public. It is for planning, management and research purposes only. Information on the locations of prehistoric and historic sites are exempted from the California Freedom of Information Act, as specified in Government Code §6254.10.

Northeast Center of the
California Historical Resources
Information System

BUTTE
GLENN
LASSEN
MODOC
PLUMAS
SHASTA

SIERRA
SISKIYOU
SUTTER
TEHAMA
TRINITY

123 West 6th Street, Suite 100
Chico CA 95928
Phone (530) 898-6256
neinfocntr@csuchico.edu

September 12, 2011

Mr. Ric Windmiller
2280 Grass Valley Highway # 205
Auburn CA 95603

**I.C. File # D11-68
Records Search**

RE: Gray Lodge Water Supply Project
T17N, R1E, Section 1; T17N, R2E, Sections, 3, 7, 8, 9, 10, 17, 18;
T18N, R1E, Sections 25, 36; T18N, R3E, Sections 5, 6
T18N, R2E, Sections 1, 2, 11, 14, 15, 22, 23, 25, 27, 28, 29, 30, 31, 34, 36;
USGS Biggs, West of Biggs, Penning ton, and Gridley 7.5' and Butte City and
Gridley 15' quads
Approximately 19 linear miles, estimated from project map (Butte County)

Dear Mr. Windmille,

In response to your request, a records search for the project cited above was conducted by examining the official maps and records for archaeological sites and surveys in Butte County. Please note that this record search includes the requested 50 meter radius surrounding the project area.

RESULTS:

Prehistoric Resources: According to our records, one prehistoric site has been recorded within the 50 meter project vicinity, consisting of net sinkers, charmstones and a bowl mortar (CA-BUT-326). The location of the site is plotted on the enclosed NEIC-generated maps and a copy of the site record is included with this letter. The project is located in a region utilized by Konkow Maidu populations. Unrecorded prehistoric cultural resources may be located in the project area.

Historic Resources: According to our records, one historic site has been recorded within the 50 meter project vicinity, consisting of Biggs Extension Canal (CA-BUT-3117H). The location of this site is plotted on the enclosed NEIC-generated map and a copy of the site record is included with this letter. Unrecorded historic cultural resources may be located in the project area.

The USGS Butte City (1954) and Gridley (1952) 15' quad maps indicate that Belding Lateral and Traynor Lateral are located in the project area, while Sutter Butte Canal, Hamilton Slough, Biggs, Southern Pacific Railroad, Main Drainage Canal, levees, roads, and structures are located in the project vicinity.

Previous Archaeological Investigations: According to our records, portions of the project area and its 50 meter vicinity have been previously surveyed for cultural resources. The survey locations are plotted on the enclosed NEIC-generated map and copies of the NEIC report database detail records for the survey reports, listed below, are included with this letter.

Arrington, Cindy, and Bryon Bass (SWCA)

2006 *Cultural Resources Final Report of Monitoring and Findings for the Qwest Network Construction Project, State of California.*
IC Report 7362

Bailey, Mary (Golden Hills Consulting)

2008 *Cultural Resources Reconnaissance Survey Gray Lodge Wildlife Area Field 93 Gridley, Butte County, California.*
IC Report 9748

Leach-Palm, Laura, Pat Mikkelsen, Paul Brandy, Jay King, and Lindsay Hartman (Far Western Anthropological Research Group)

2008 *Cultural Resources Inventory of Caltrans District 3 Rural Conventional Highways in Butte, Colusa, El Dorado, Glenn, Nevada, Placer, Sacramento, Sierra, Sutter, Yolo and Yuba Counties.*
IC Report 9539

Minor, Woodruff C. (Basin Research Associates, Inc.)

1996 *Cultural Resources Inventory: Wild Goose Gas Storage Project, Butte County, California.*
IC Report 2416

Nelson, Wendy J., Maureen Carpenter, and Kimberley L. Holanda (Far Western Anthropological Research Group)

2000 *Cultural Resources Survey for the Level (3) Communications Long Haul Fiber Optics Project. Segment WPO4: Sacramento to Redding.*
IC Report 4658

Neuenschwander, Neal (Peak & Associates)

2002 *Cultural Resources Assessment of the Marysville Sentry Project Yuba and Butte Counties, California.*

IC Report 5246

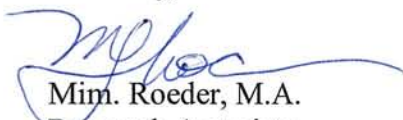
Literature Search: The official records and maps for archaeological sites and surveys in Butte County were reviewed. Also reviewed: **National Register of Historic Places - Listed properties and Determined Eligible Properties** (1988, Computer Listings 1966 through 7-00 by National Park Service); **California Register of Historical Resources** (2011); **California Points of Historical Interest** (1992); **California Inventory of Historic Resources** (1976); **California Historical Landmarks** (1996); **Directory of Properties in the Historic Property Data Files for Butte County** (2011); **Handbook of North American Indians, Vol. 8, California** (1970); **Historic Spots in California** (1966).

RECOMMENDATIONS:

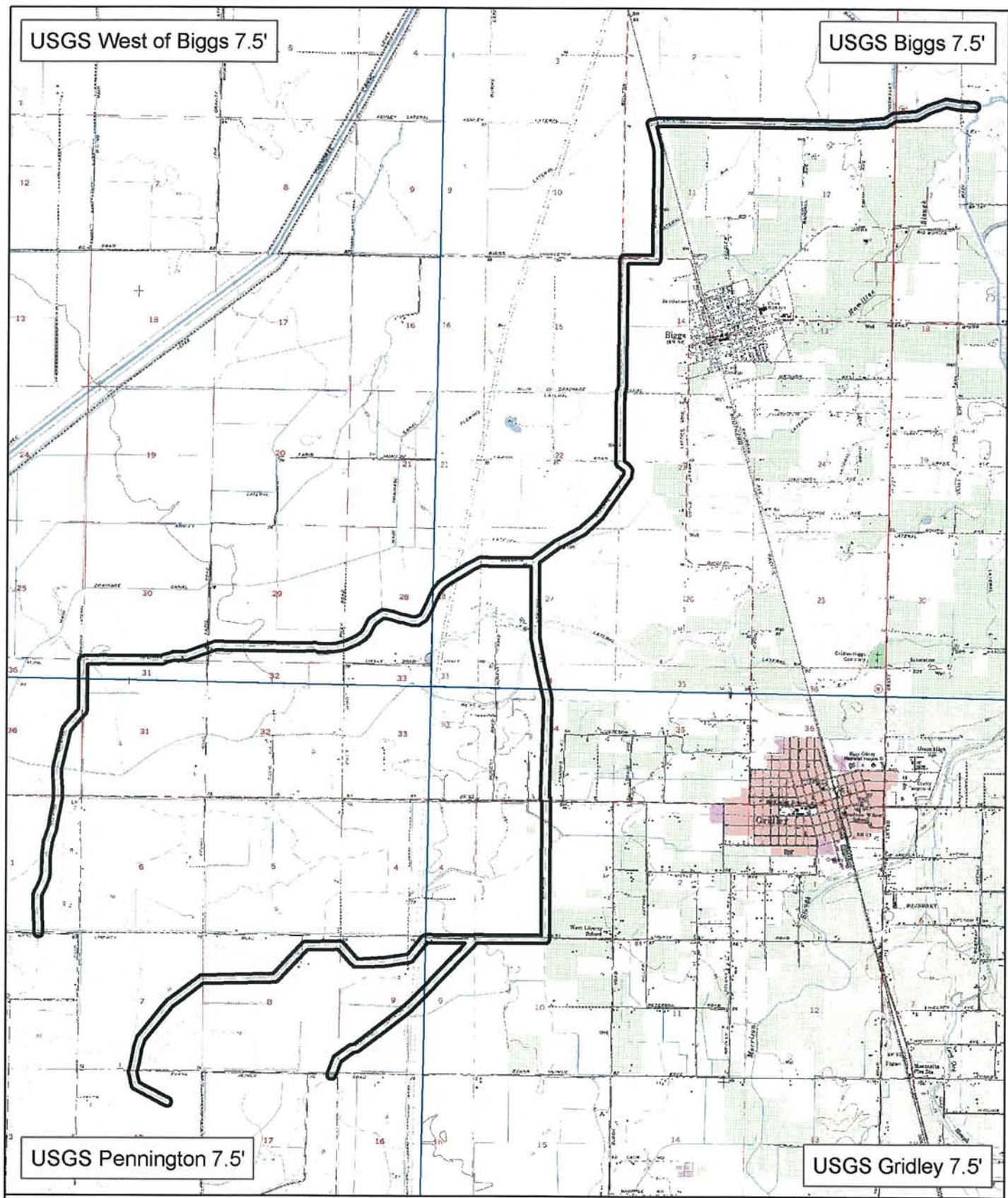
We recommend that you contact the appropriate local Native American representatives for information regarding traditional cultural properties that may be located within project boundaries for which we have no records. Additionally, you may want to consult historic GLO plat maps in order to aid in the identification of unrecorded historic sites, which may be located within project boundaries.

The charge for this record search is **\$303.30** (please refer to the following page for more information). An invoice will follow from the CSUC Research Foundation for billing purposes. Thank you for your concern in preserving California's cultural heritage, and please feel free to contact us if you have any questions or need any further information or assistance.

Sincerely,


Mim. Roeder, M.A.
Research Associate

Northeast Information Center - Records Search Results

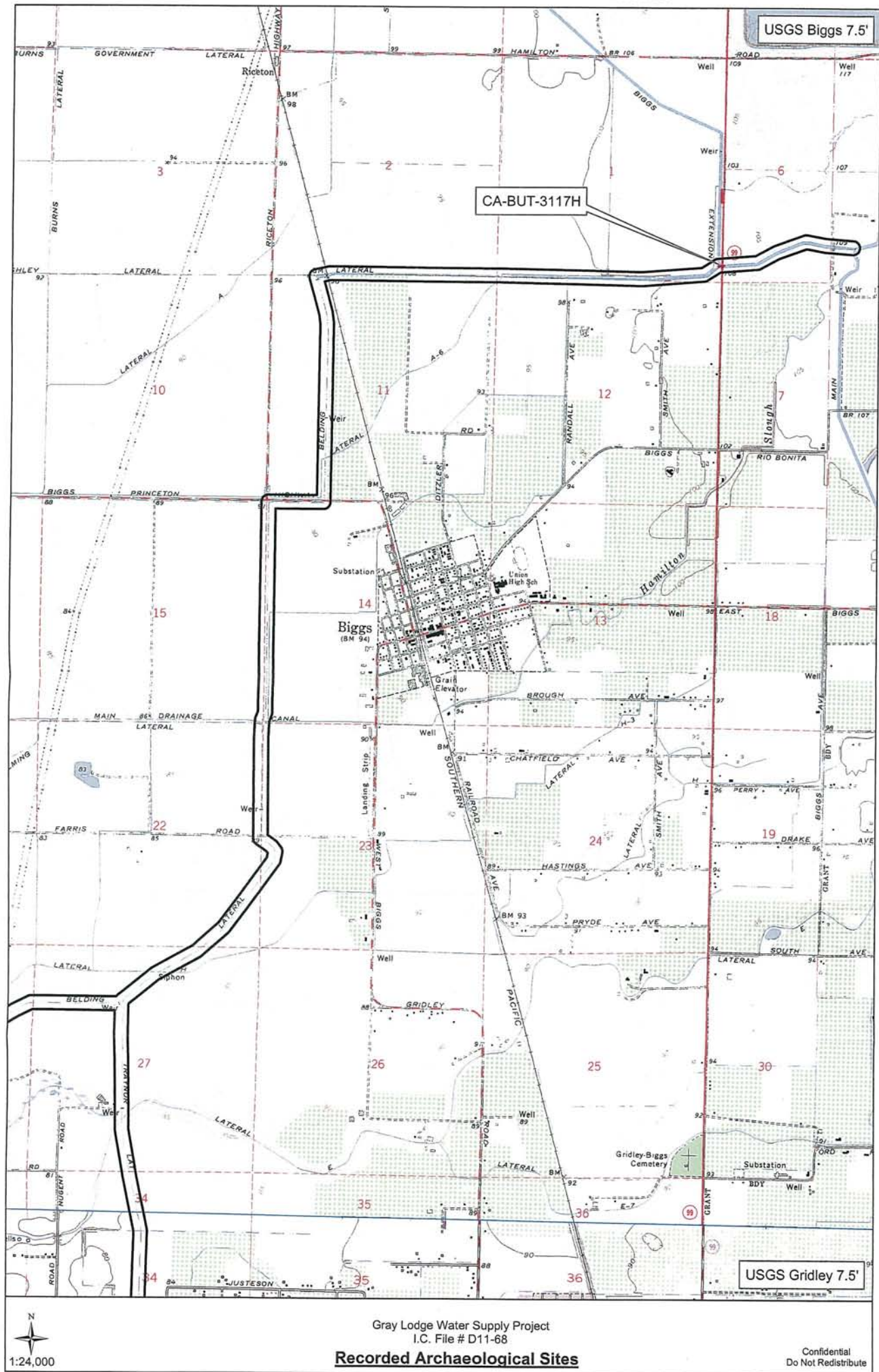


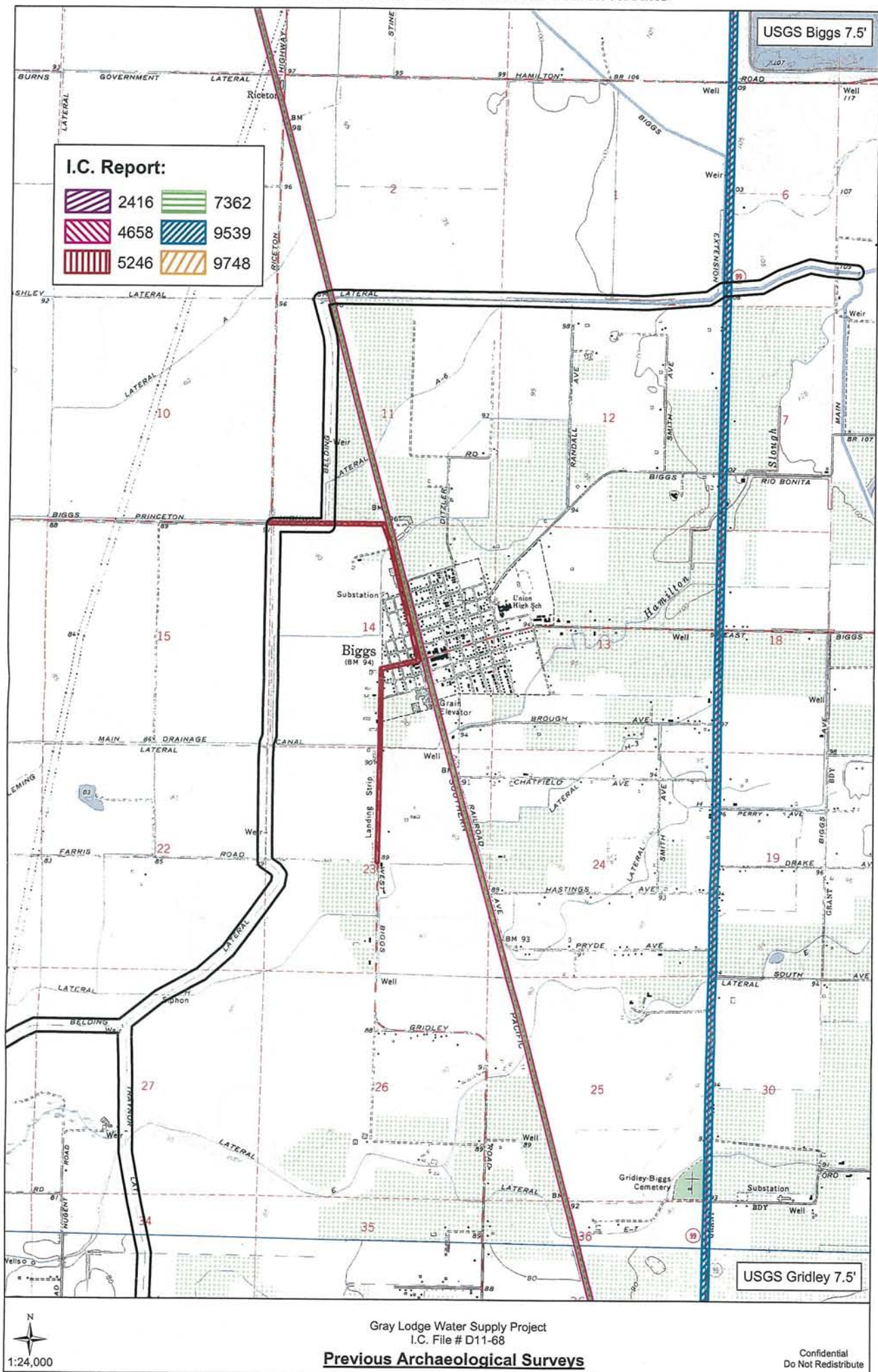
Gray Lodge Water Supply Project
I.C. File # D11-68

Project Map

Confidential
Do Not Redistribute

Northeast Information Center - Records Search Results





I.C. Report:

2416	7362
4658	9539
5246	9748

USGS Pennington 7.5'

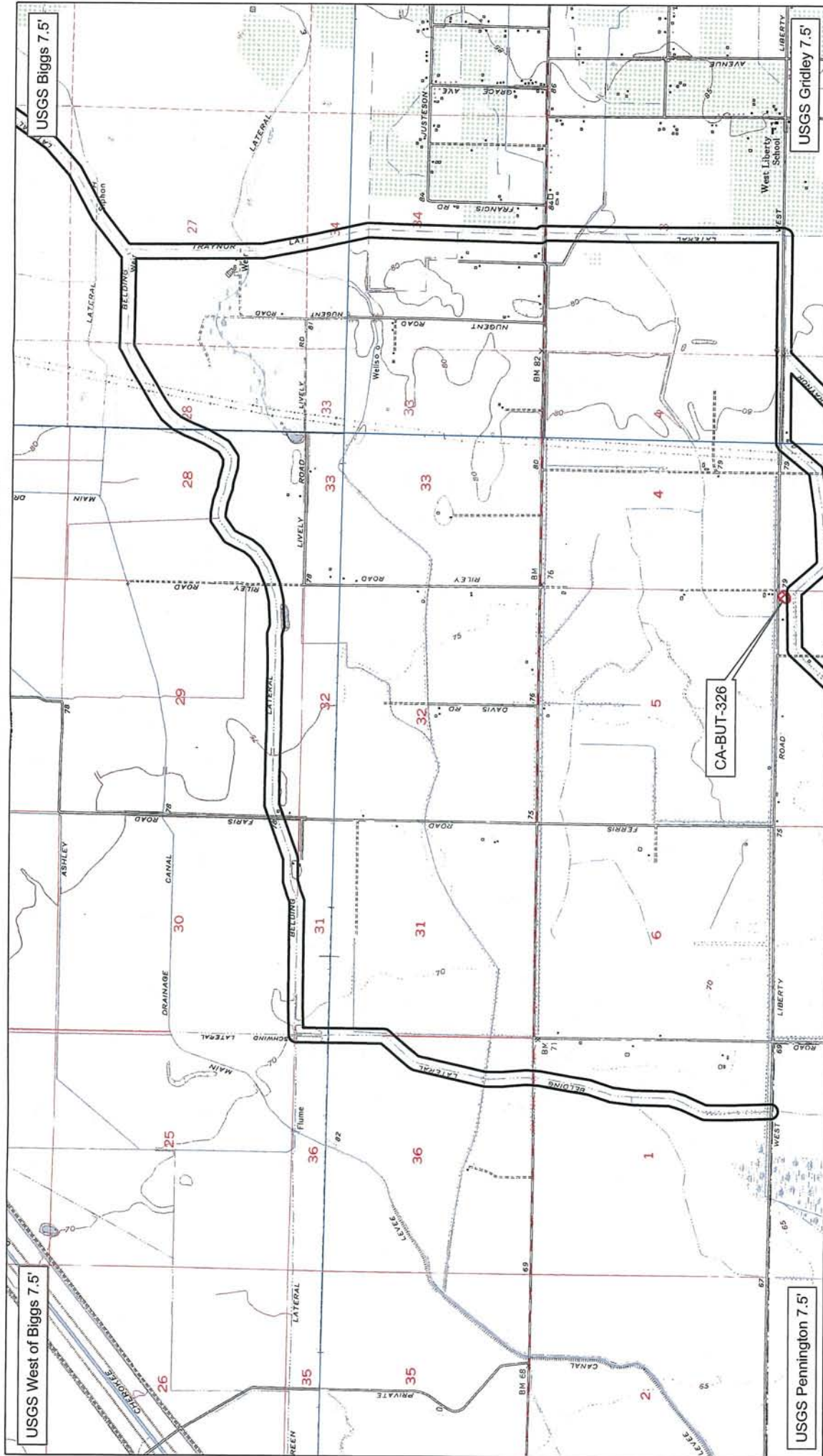
USGS Gridley 7.5'

Previous Archaeological Surveys

Confidential
Do Not Redistribute

1:24,000

Northeast Information Center - Records Search Results

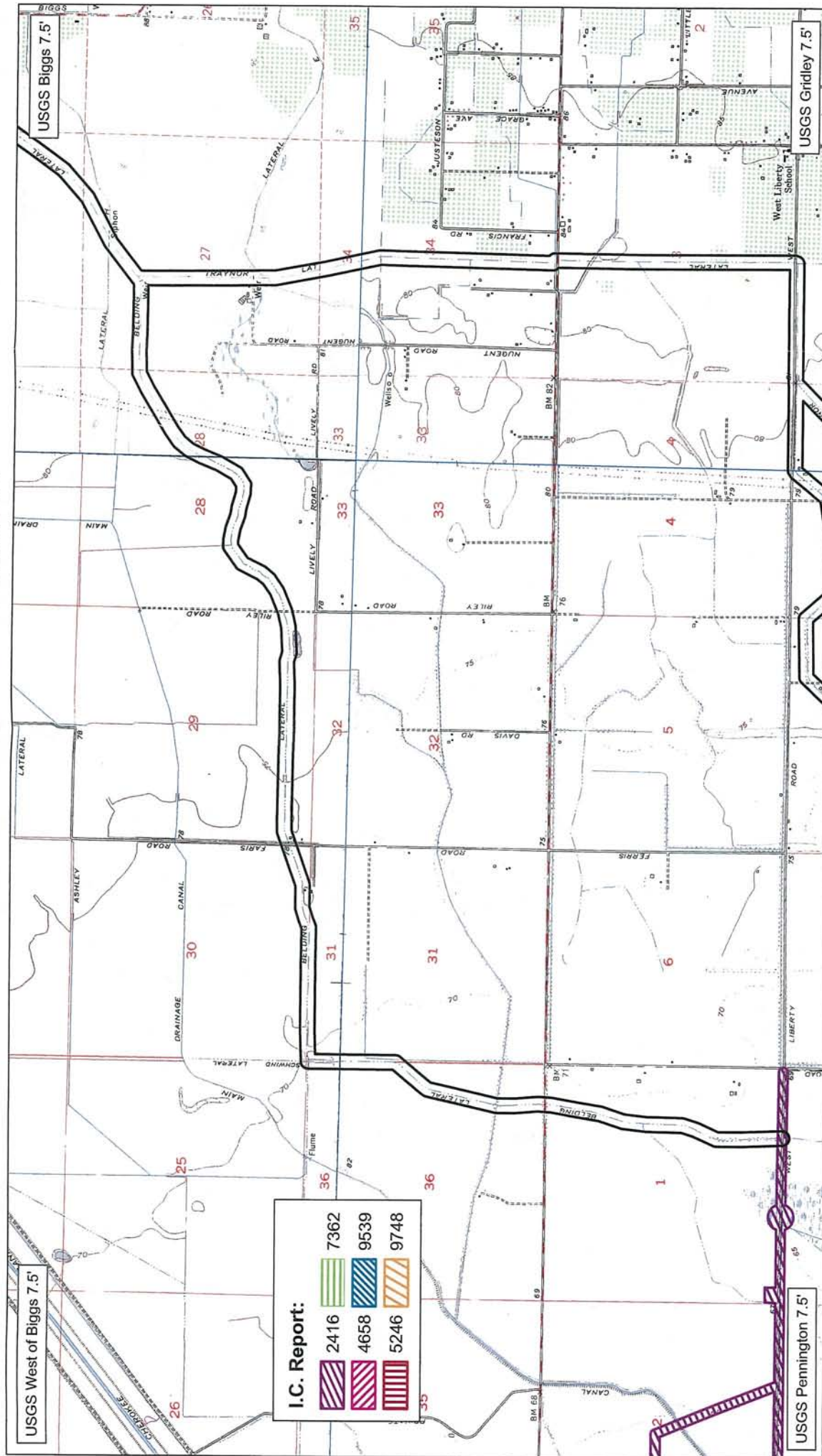


Gray Lodge Water Supply Project
I.C. File # D11-68

Recorded Archaeological Sites

Confidential
Do Not Redistribute

Northeast Information Center - Records Search Results



Northeast Information Center Report Detail Record: 9539

Old IC no(s):

Records search:

Citation Information

Authors: Leach-Palm, Laura
Pat Mikkelsen
Paul Brandy
Jay King
Lindsay Hartman

Year: 2008

Title: Cultural Resources Inventory of Caltrans District 3 Rural Conventional Highways in Butte, Colusa, El Dorado, Glenn, Nevada, Placer, Sacramento, Sierra, Sutter, Yolo and Yuba Counties

Affiliation: Far Western Anthropological Research Group

Lead Agency: California Department of Transportation

Lead Agency ID:

Report Type(s): Archaeological survey

Inventory Size: 710 miles

Survey < project: Yes

No. Pages: 544

Collections: Unknown

Disclosure: Not for publication

Associated Resources

Primary No.	HRI No.	Trinomial	Name
P-04-000002		CA-BUT-2	
P-04-000421		CA-BUT-421	
P-04-000958		CA-BUT-958/H	
P-04-000970		CA-BUT-970	
P-04-001254		CA-BUT-1254H	Dogtown/Oroville Road
P-04-001315		CA-BUT-1315	
P-04-001340			SUTTER-BUTTE CANAL
P-04-001628		CA-BUT-1628H	
P-04-001695		CA-BUT-1695/H	Old Pheobe Hearst Property
P-04-002771			OROVILLE WYE
P-04-002925			
P-04-003114			
P-04-003115			
P-04-003116		CA-BUT-3116H	Main Chandon Lateral
P-04-003117		CA-BUT-3117H	Biggs Extention Canal
P-04-003118		CA-BUT-3118H	Tule Ditch/Main Ditch A
P-04-003119		CA-BUT-3119H	Union Pacific/Southern Pacific Railroad
P-04-003120		CA-BUT-3120H	Rice Canal/Main Ditch B
P-04-003121		CA-BUT-3121H	Cherokee Canal
P-04-003122		CA-BUT-3122H	Main Drain
P-04-003123			
P-04-003125			PG&E Poe Power Dam
P-04-003126			Cresta Powerhouse and Penstock
P-11-000217		CA-GLE-217	Way-toy-Sawal; Waitusawel
P-11-000218		CA-GLE-218	
P-11-000219		CA-GLE-219	
P-11-000220		CA-GLE-220	
P-11-000244		CA-GLE-244H	Bridgeport; Winslow
P-11-000246		CA-GLE-246/H	Kah'-choo-pah'-kah
P-11-000578		CA-GLE-578H	River Branch Canal
P-11-000581		CA-GLE-581/H	
P-11-000603		CA-GLE-603H	PROVIDENT MAIN CANAL; Brush Canal
P-11-000604		CA-GLE-604H	COLUSA DRAIN-PROVIDENT IRRIGATIO
P-11-000605		CA-GLE-605H	GLENN COLUSA CANAL
P-11-000606		CA-GLE-606H	COLUSA & HAMILTON RAILWAY
P-11-000630			

Northeast Information Center Report Detail Record: 9539

P-11-000631		
P-11-000680		
P-11-000681		
P-11-000682		
P-11-000683		
P-11-000684		
P-11-000685		
P-11-000686	CA-GLE-686H	Sacramento River East Levee
P-11-000687	CA-GLE-687H	Quint Canal
P-11-000688		Old Stony Creek Bridge
P-11-000689	CA-GLE-689H	Sacramento River Levee
P-11-000690		Shadds Ranch Pumphouse
P-32-000970	CA-PLU-970H	Feather River Highway
P-46-000004	CA-SIE-4	
P-46-000009	CA-SIE-9/H	
P-46-000042	CA-SIE-42	
P-46-000043	CA-SIE-43/H	
P-46-000045	CA-SIE-45	
P-46-000057	CA-SIE-57	
P-46-000063	CA-SIE-63	SWIMMING HOLE SITE
P-46-000083	CA-SIE-83H	DEPOT HILL MINE / JOUBERT DIGGINGS
P-46-000344	CA-SIE-344	Watkins Generating Station - Flake Scatte
P-46-000692	CA-SIE-692	
P-46-000985	CA-SIE-985H	BOCA AND LOYALTON RAILROAD
P-46-001019	CA-SIE-1019H	Gillespie Ditch
P-46-001026		
P-46-001028	CA-SIE-1028H	
P-46-001215	CA-SIE-1215	
P-46-001350	CA-SIE-1350H	
P-46-001437		FREEMAN DITCH
P-46-001543	CA-SIE-1543H	McNair Sawmill
P-46-001544	CA-SIE-1544H	Truckee-Jamieson Road
P-46-001545	CA-SIE-1545/H	The Yarrington Place
P-46-001546		
P-46-001547		
P-46-001548		
P-46-001549		
P-46-001550	CA-SIE-1550H	Yuba Gap Wagon Road
P-46-001551	CA-SIE-1551H	
P-46-001552	CA-SIE-1552H	Mohawk and Sierra Valley Road
P-46-001553	CA-SIE-1553H	Old Sierra Valley Road
P-46-001554		
P-46-001555		
P-46-001556		
P-46-001557		
P-46-001558		
P-46-001559		
P-46-001560		
P-46-001561		
P-46-001562		
P-46-001563		
P-46-001564		
P-46-001565		
P-46-001566		
P-46-001567		
P-46-001568		
P-46-001569		
P-46-001570		
P-46-001571		
P-46-001572		

Northeast Information Center Report Detail Record: 9539

P-46-001573		
P-46-001574		
P-46-001575		
P-46-001576		
P-51-000087	CA-SUT-87H	NORTHERN ELECTRIC RAILROAD (1905)
P-51-000101		
P-51-000102		6198 LIVE OAK HIGHWAY
P-51-000103		6644 SAWTELLE RD, YUBA CITY
P-51-000104		6469 SAWTELLE RD, YUBA CITY
P-51-000105		5847 SAWTELLE RD, YUBA CITY
P-51-000106		5880 SAWTELLE RD, YUBA CITY
P-51-000107		5582 SAWTELLE RD, YUBA CITY
P-51-000108		5383 SAWTELLE RD, YUBA CITY
P-51-000123		LIVE OAK HISTORIC COMMERCIAL DIST
P-51-000143		
P-51-000144	CA-SUT-144H	Reclamation District 1500 Levee
P-51-000145	CA-SUT-145H	West Side Canal
P-51-000146	CA-SUT-146H	Robbins Canal
P-51-000147	CA-SUT-147H	Sutter Bypass Levee
P-51-000148	CA-SUT-148H	East Side Canal
P-51-000149		
P-51-000150	CA-SUT-150H	Feather River Levee
P-51-000151		

No. Sites: 119

No. Informal: 0

Notes

Location Info

County(ies): Butte
Glenn
Sierra
Sutter

USGS 7.5' Quads: MERIDIAN
ANTELOPE VALLEY
BERRY CREEK
BIGGS
BUTTE CITY
CALPINE
CAMPTONVILLE
CHEROKEE
CHROME
CLIO
DOWNIEVILLE
ELK CREEK
FRUTO
GILSIZER SLOUGH
GLENN
GOODYEARS BAR
GRIDLEY
HAMILTON CITY
HAMLIN CANYON
HAYPRESS VALLEY
HONCUT
KNIGHTS LANDING
LOYALTON
NICOLAUS
NORD
ORD FERRY
ORLAND

Northeast Information Center Report Detail Record: 9539

OROVILLE
OROVILLE DAM
PALERMO
PRINCETON
PULGA
RICHARDSON SPRINGS NW
SATTLEY
SHIPPEE
SIERRA CITY
SIERRAVILLE
STONE VALLEY
STRAWBERRY VALLEY
SUTTER
SUTTER BUTTES
SUTTER CAUSEWAY
WEST OF BIGGS
WILLOWS

PLSS:

Address:

Database Record Metadata

	<i>Date</i>	<i>User</i>	
<i>Entered:</i>	7/23/2008	joann	
<i>Last Modified:</i>	6/16/2010	Sally	
<i>IC Actions:</i>	<i>Date</i>	<i>User</i>	<i>Action take</i>
	2/3/2010	sally	corrected quad location.

Northeast Information Center Report Detail Record: 9748

Old IC no(s):

Records search: d-07-110

Citation Information

Authors: Bailey, Mary

Year: 2008

Title: Cultural Resources Reconnaissance Survey Gray Lodge Wildlife Area Field 93 Gridley, Butte County, California

Affiliation: Golden Hills Consulting

Lead Agency: Ducks Unlimited

Lead Agency ID:

Report Type(s): Archaeological survey

Inventory Size: 100 acres

Survey < project: No

No. Pages: 12

Collections: No

Disclosure: Not for publication

Associated Resources

Primary No. HRI No.

P-04-000325

Trinomial

CA-BUT-325

Name

No. Sites: 1

No. Informal: 0

Notes

Location Info

County(ies): Butte

USGS 7.5' Quads: PENNINGTON

PLSS: Township/range Sections

T 17N R 2E 7

BL/M or Land Grant

MDBM

Address:

Database Record Metadata

Date User

Entered: 11/14/2008 matt

Last Modified: 11/14/2008 matt

IC Actions:

Northeast Information Center Report Detail Record: 7362

Old IC no(s):

Records search:

Citation Information

Authors: Arrington, Cindy,
Bryon Bass

Year: 2006

Title: Cultural Resources Final Report of Monitoring and Findings for the Qwest Network Construction Project, State of California

Affiliation: SWCA

Lead Agency: California Public Utilities Commission

Lead Agency ID:

Report Type(s): Archaeological survey

Inventory Size: ~250 miles

Survey < project: Yes

No. Pages: 465

Collections: No

Disclosure: Not for publication

Associated Resources

Primary No.	HRI No.	Trinomial	Name
P-04-000001		CA-BUT-1/H	Patrick Rancherio
P-04-000010		CA-BUT-10	
P-04-000011		CA-BUT-11/H	
P-04-000049		CA-BUT-49	
P-04-000295		CA-BUT-295/H	
P-04-000459		CA-BUT-459	michupda
P-04-000564		CA-BUT-564	
P-04-000573		CA-BUT-573/H	SHUTE MT. 1
P-04-000574		CA-BUT-574	MECHOOPDA IND. RANCHERIA, CHICO
P-04-000712		CA-BUT-712H	
P-04-000713		CA-BUT-713H	
P-04-001184		CA-BUT-1184	
P-04-001410			
P-45-000208		CA-SHA-208	
P-45-000220		CA-SHA-220/H	
P-45-000226		CA-SHA-226	
P-45-000511		CA-SHA-511	MOSQUITO 1
P-45-000787		CA-SHA-787	
P-45-001961		CA-SHA-1961	
P-45-002830			
P-47-000012		CA-SIS-12	
P-47-000155		CA-SIS-155/H	MERRIAMS ERAS
P-47-000493		CA-SIS-493H	HUDSON BAY POUT
P-47-000536		CA-SIS-536H	KLAMATHON
P-47-001283		CA-SIS-1283	
P-47-001513		CA-SIS-1513	
P-47-002099			
P-52-000028		CA-TEH-28	
P-52-000029		CA-TEH-29	
P-52-000031		CA-TEH-31	
P-52-000055		CA-TEH-55	ONE OF WERLHOFS RED BLUFF SITES
P-52-000071		CA-TEH-71	
P-52-000117		CA-TEH-117	
P-52-000118		CA-TEH-118	
P-52-000245		CA-TEH-245	
P-52-000677		CA-TEH-677	
P-52-000750		CA-TEH-750	
P-52-000787		CA-TEH-787	
P-52-000789		CA-TEH-789	

Northeast Information Center Report Detail Record: 7362

P-52-001775

Reeds Creek Bridge

P-52-001776

Brickyard Creek Bridge

P-52-001777

P-52-001778

P-52-001977

CA-TEH-1977H

JELLYS FERRY ROAD

No. Sites: 45

No. Informal: 0

Notes

45 sites. Linear survey along Southern Pacific Railway LINEAR WIDTH = 50'

Location Info

County(ies): Butte

Shasta

Siskiyou

Sutter

Tehama

USGS 7.5' Quads: BALLS FERRY

BIGGS

CHICO

CHINA MOUNTAIN

COTTONWOOD

ENTERPRISE

FOSTER ISLAND

GAZELLE

GERBER

GRIDLEY

HAWKINSVILLE

HOOKE

LOS MOLINOS

MONTAGUE

NELSON

NORD

ORD FERRY

PROJECT CITY

RED BLUFF EAST

RED BLUFF WEST

REDDING

SHASTA DAM

SHIPPEE

SUTTER

VINA

YUBA CITY

LAMOINE

OBRIEN

BOHEMOTASH MOUNTAIN

HANLAND PEAK

CHICKEN HAWK HILL

TOMBSTONE MOUNTAIN

DUNSMUIR

CITY OF MOUNT SHASTA

MOUNT EDDY

WEED

HOTLUM

BOGUS MOUNTAIN

IRON GATE RESERVOIR

HORNBROOK

COTTONWOOD PEAK

MOUNT ASHLAND

Northeast Information Center Report Detail Record: 7362

PLSS:

Address:

Database Record Metadata

	<i>Date</i>	<i>User</i>
<i>Entered:</i>	3/26/2007	rob
<i>Last Modified:</i>	2/17/2010	sally
<i>IC Actions:</i>		