



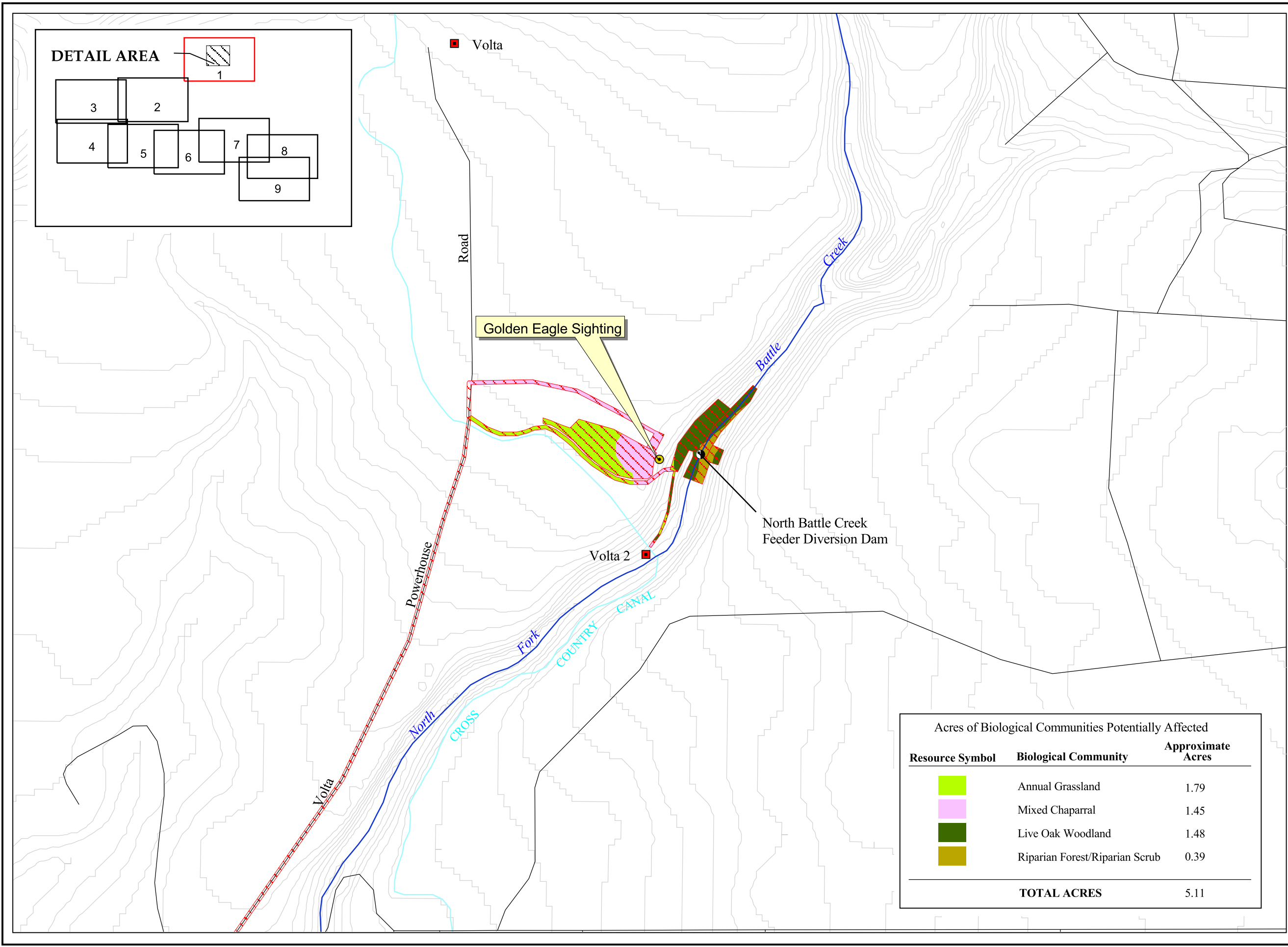
**Index of Biological
Survey Boundaries
and Construction Activity
Sites**

Figure 4.2-1

LEGEND

-  Biological Survey Boundary
-  Detail Areas for Construction Activity Impacts





Biological Resources Documented at North Battle Creek Feeder Diversion Dam

Figure 4.2-2

LEGEND

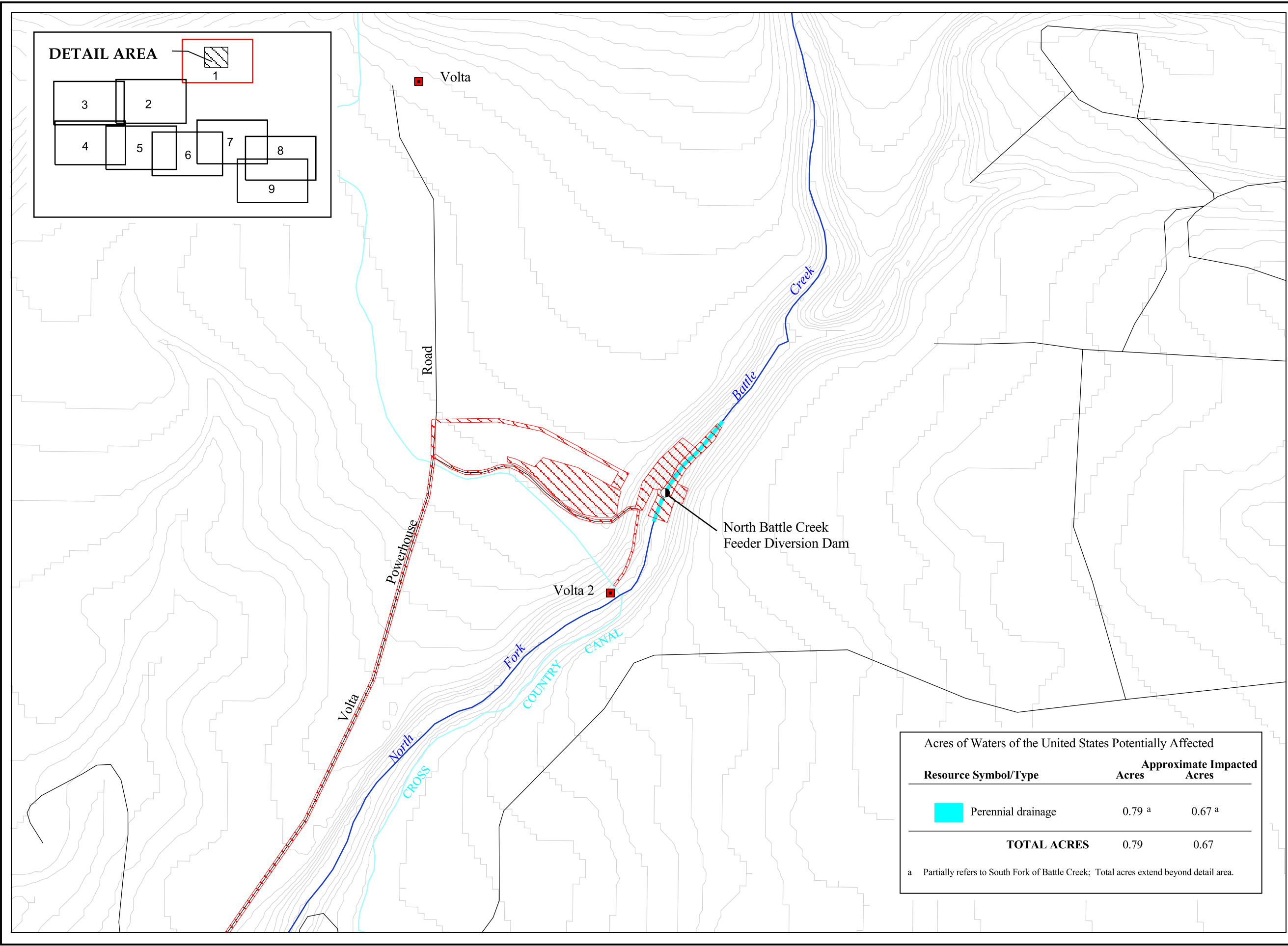
- Powerhouse
- Dam
- Road
- Proposed Construction Area/Physical Disturbance
- Canal or Tunnel
- Contour Interval 5 Meters
- Golden Eagle Sighting

NOTE: Affected area represents the Five Dam Removal Alternative (Proposed Action). Other alternatives may have greater or lesser areas affected by the project.

N

0 100 200

METERS




**Waters of the
United States
Documented at
North Battle Creek
Feeder Diversion Dam**

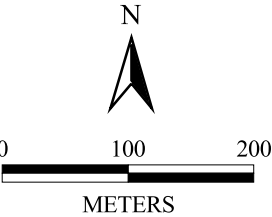
Figure 4.2-3

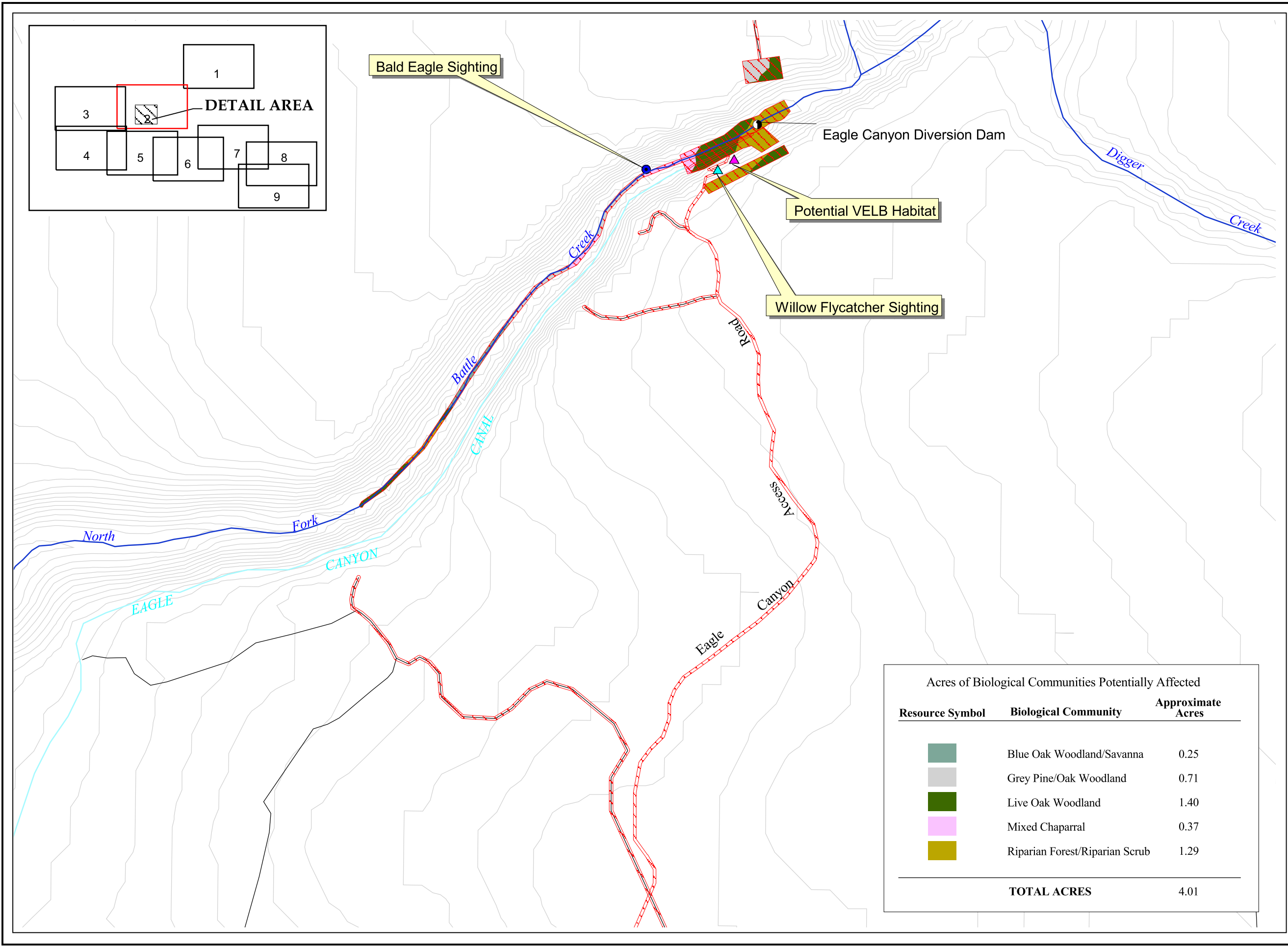
LEGEND

- Powerhouse
- Dam
- Road
- Construction Activity
Physical Disturbance
- Canal or Tunnel
- Contour Interval 5 Meters

NOTE: Affected area represents the Five Dam Removal Alternative (Proposed Action). Other alternatives may have greater or lesser areas affected by the project.

Acres of Waters of the United States Potentially Affected			
Resource Symbol/Type	Approximate Impacted		
	Acres	Acres	
 Perennial drainage	0.79 ^a	0.67 ^a	
TOTAL ACRES	0.79	0.67	
^a Partially refers to South Fork of Battle Creek; Total acres extend beyond detail area.			





**Biological Resources
Documented at
Eagle Canyon
Diversion Dam**

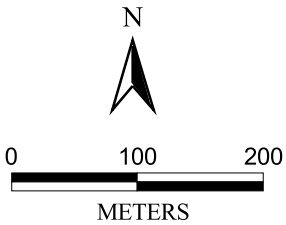
Figure 4.2-4

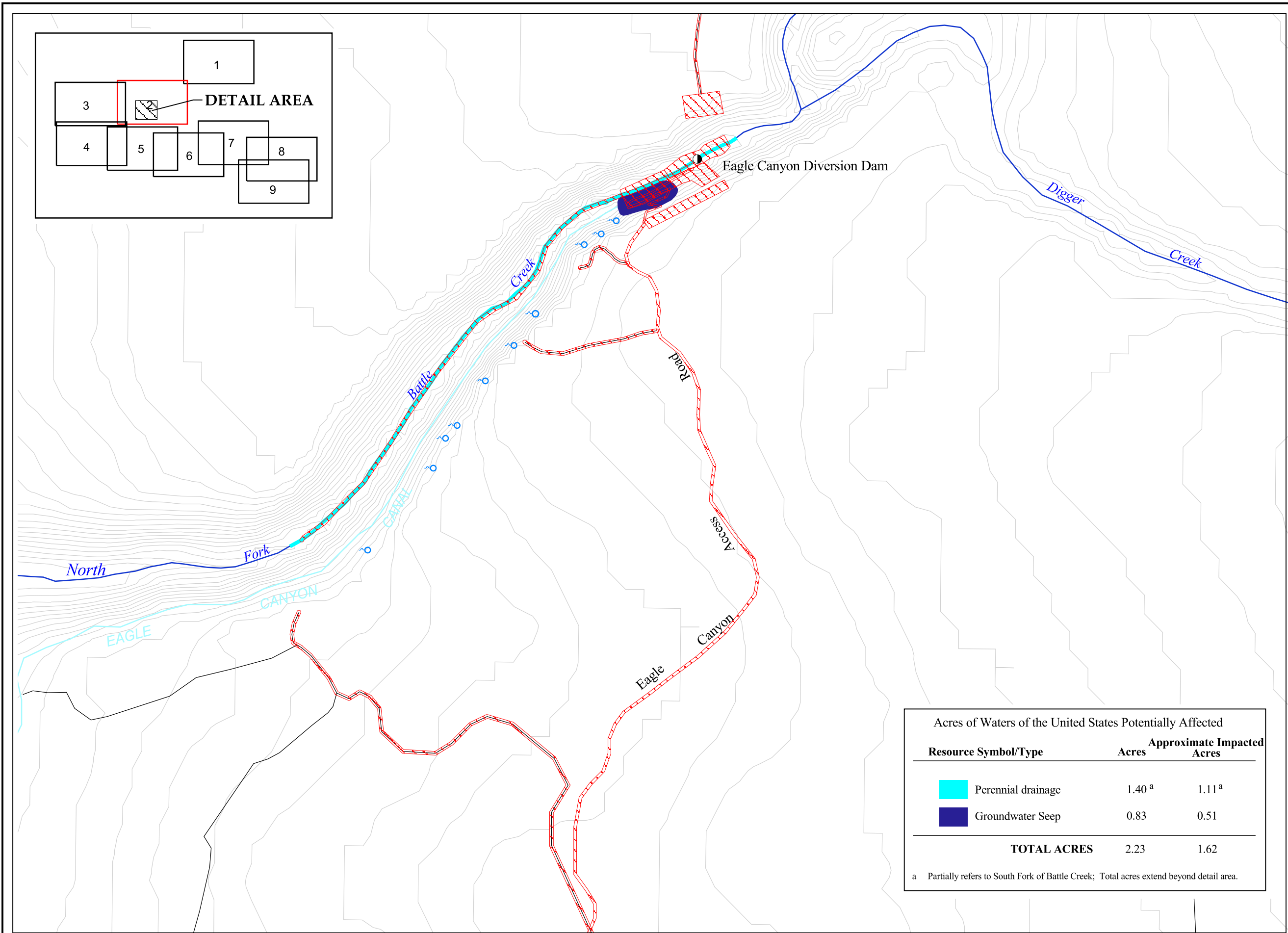
LEGEND

- Dam
- Road
- Proposed Construction Area/
Physical Disturbance
- Canal or Tunnel
- Contour Interval 5 Meters
- Bald Eagle Sighting
- Potential VELB Habitat
- Willow Flycatcher Sighting

NOTE: Affected area represents the Five Dam Removal Alternative (Proposed Action). Other alternatives may have greater or lesser areas affected by the project.

Acres of Biological Communities Potentially Affected		
Resource Symbol	Biological Community	Approximate Acres
	Blue Oak Woodland/Savanna	0.25
	Grey Pine/Oak Woodland	0.71
	Live Oak Woodland	1.40
	Mixed Chaparral	0.37
	Riparian Forest/Riparian Scrub	1.29
TOTAL ACRES		4.01







**Waters of the
United States
Documented at
Eagle Canyon
Diversion Dam**

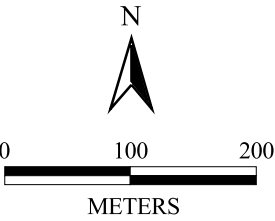
Figure 4.2-5

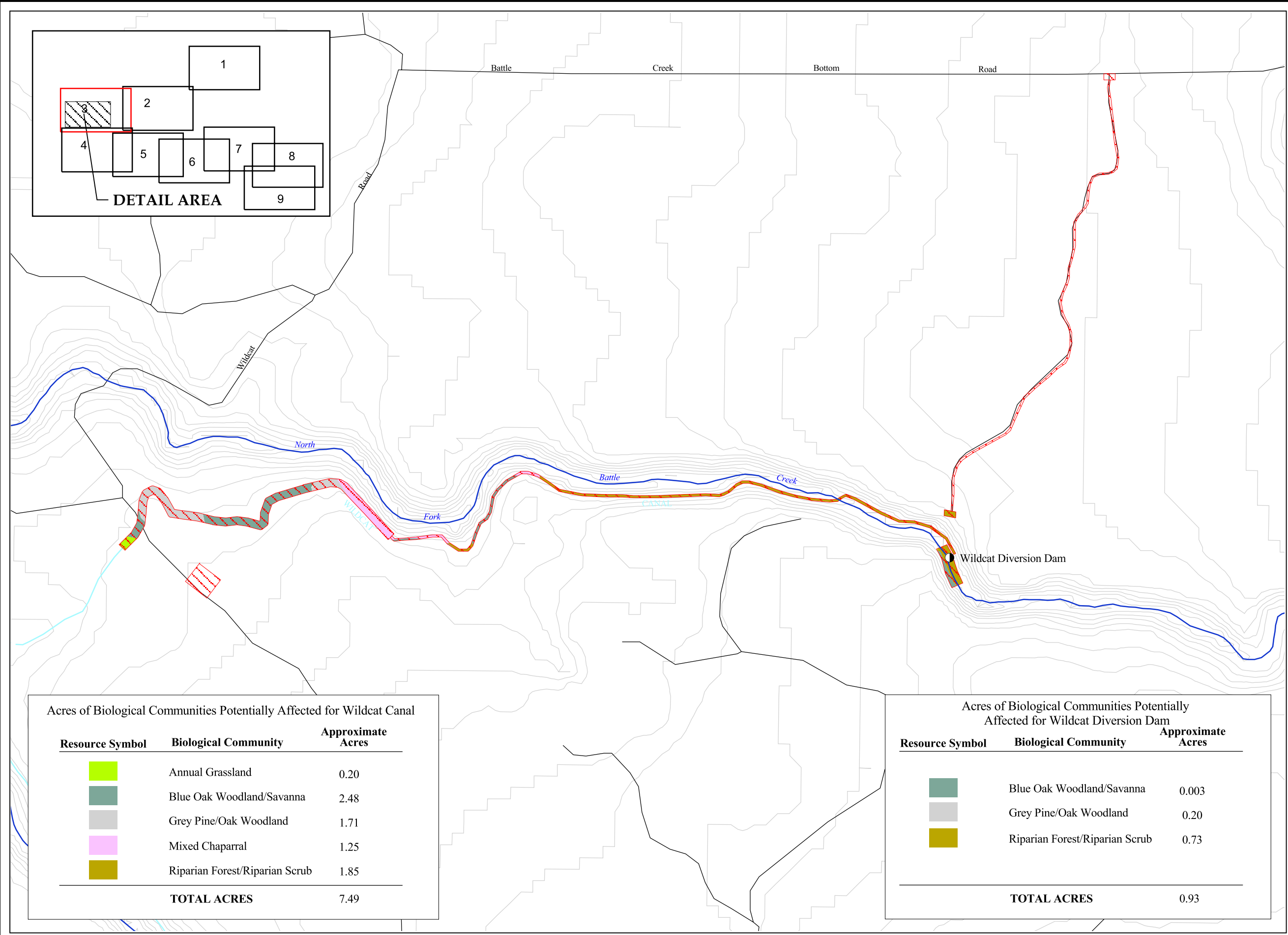
LEGEND

- Spring
- Dam
- Road
- Construction Activity
Physical Disturbance
- Canal or Tunnel
- Contour Interval 5 Meters

NOTE: Affected area represents the Five Dam Removal Alternative (Proposed Action). Other alternatives may have greater or lesser areas affected by the project.

Acres of Waters of the United States Potentially Affected			
Resource Symbol/Type	Acres	Approximate Impacted Acres	
 Perennial drainage	1.40 ^a	1.11 ^a	
 Groundwater Seep	0.83	0.51	
TOTAL ACRES	2.23	1.62	
^a Partially refers to South Fork of Battle Creek; Total acres extend beyond detail area.			





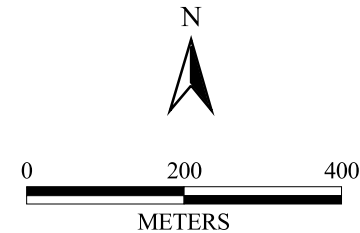
Biological Resources Documented at Wildcat Diversion Dam

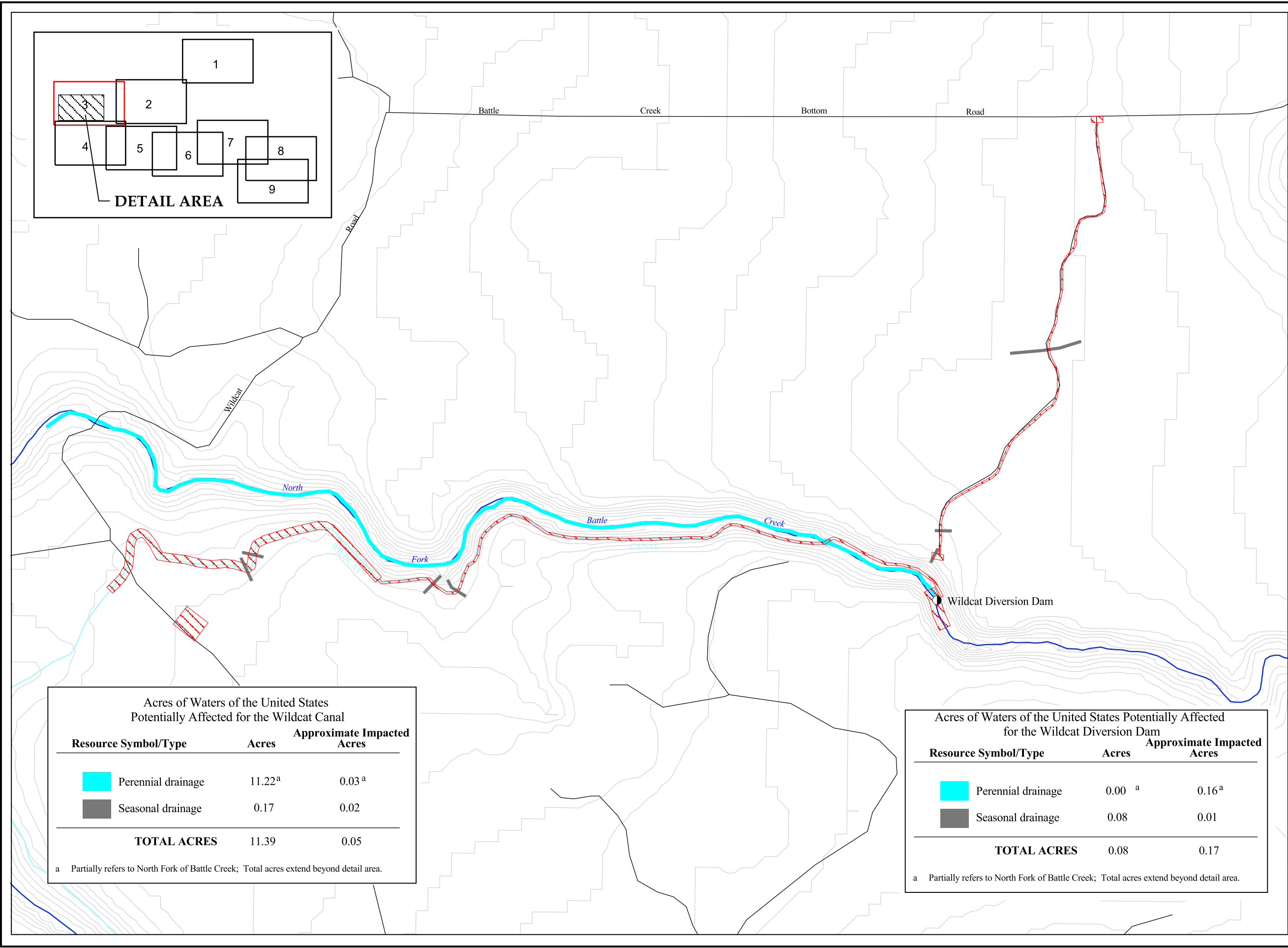
Figure 4.2-6

LEGEND

- Dam
- Road
- [Red Hatched] Proposed Construction Area/Physical Disturbance
- Canal or Tunnel
- Contour Interval 5 Meters

NOTE: Affected area represents the Five Dam Removal Alternative (Proposed Action). Other alternatives may have greater or lesser areas affected by the project.





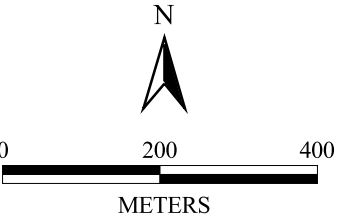
Waters of the United States Documented at Wildcat Diversion Dam

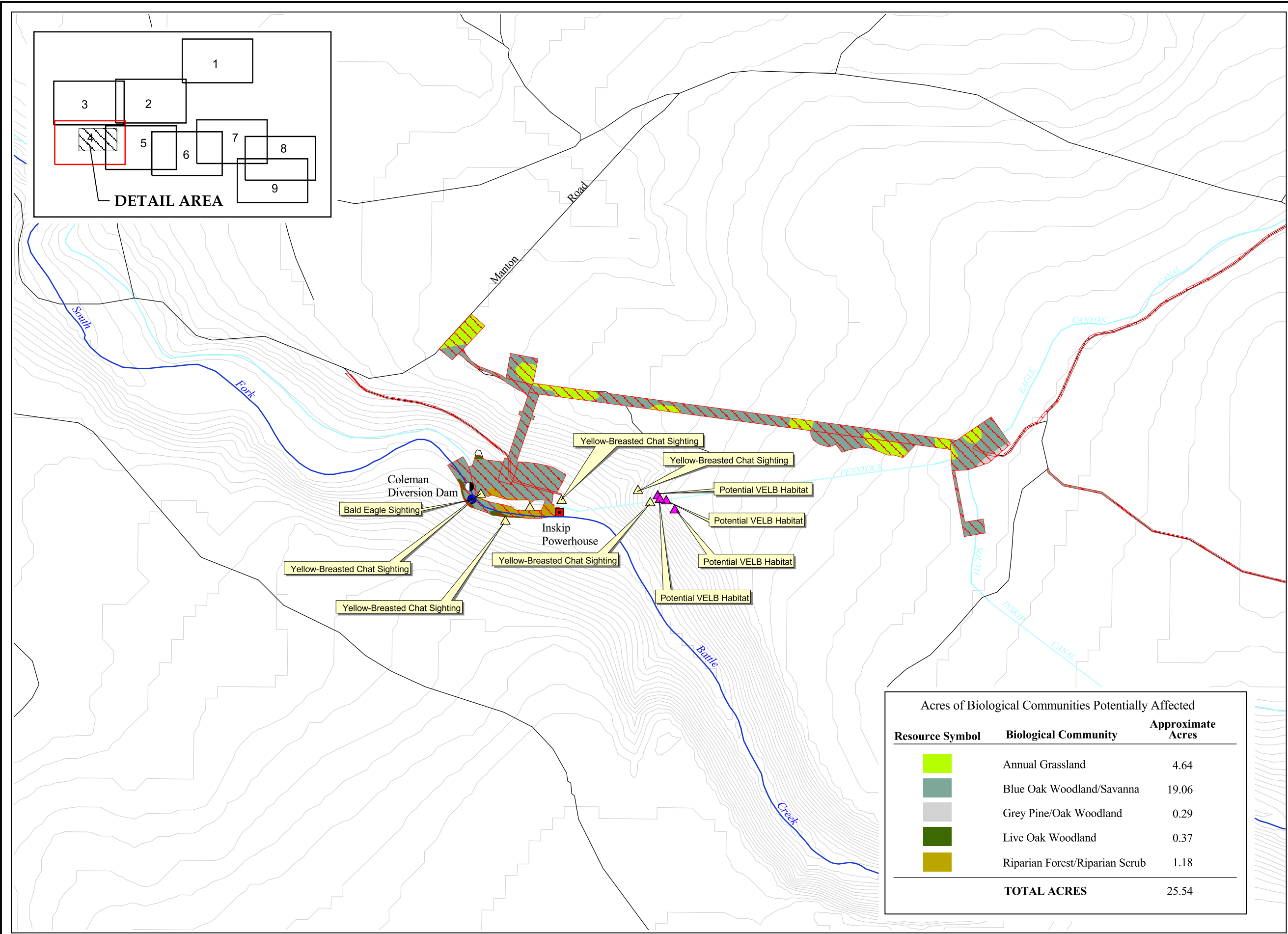
Figure 4.2-7

LEGEND

- Powerhouse
- Dam
- Road
- Construction Activity Physical Disturbance
- Canal or Tunnel
- Contour Interval 5 Meters

NOTE: Affected area represents the Five Dam Removal Alternative (Proposed Action). Other alternatives may have greater or lesser areas affected by the project.





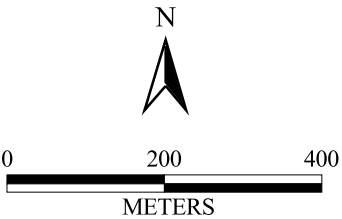
**Biological Resources
Documented at
Coleman Diversion Dam/
Inskip Powerhouse**

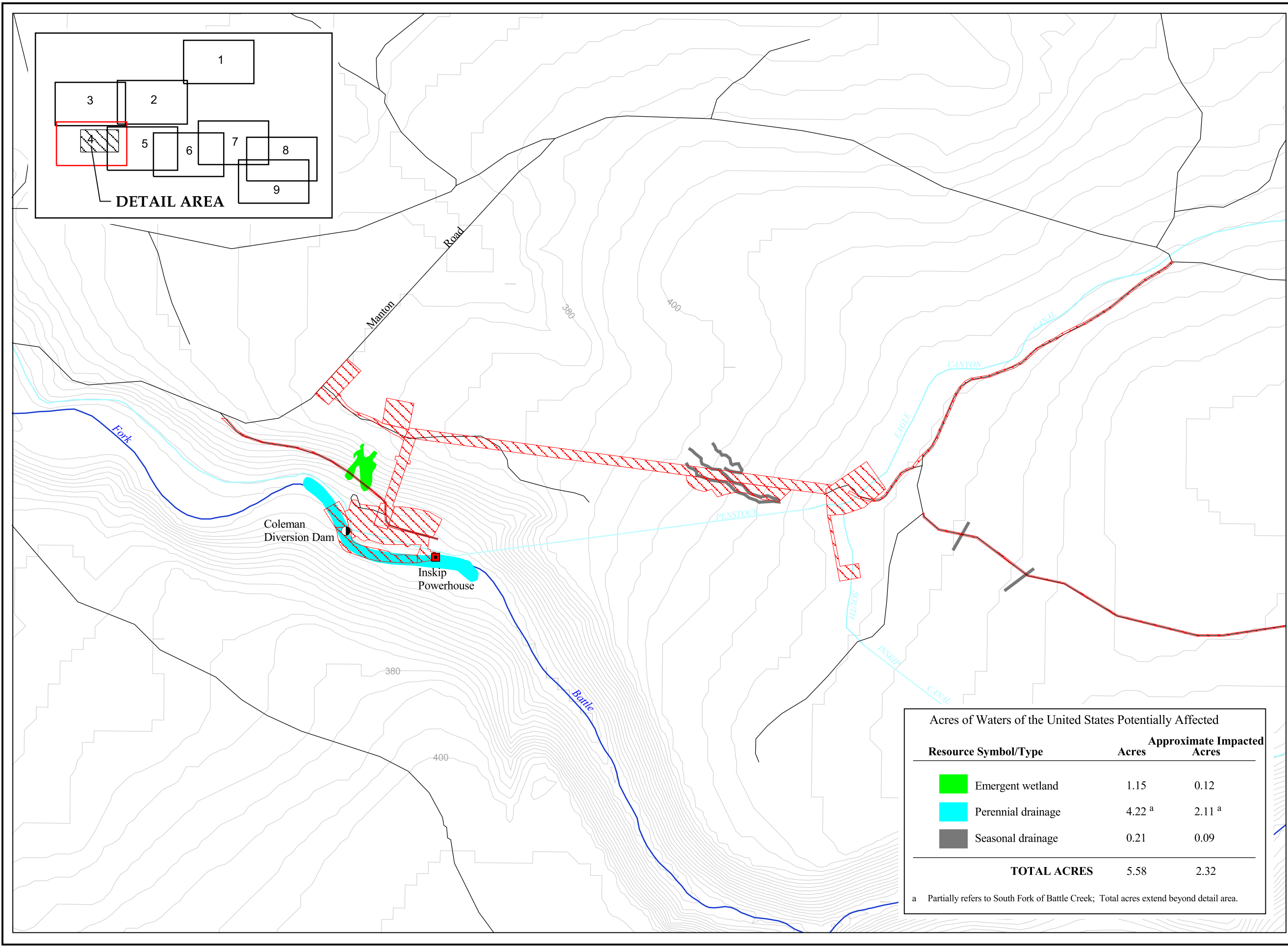
Figure 4.2-8

LEGEND

- Powerhouse
- Dam
- Road
- Proposed Construction Area/
Physical Disturbance
- Canal or Tunnel
- Contour Interval 5 Meters
- Bald Eagle Sighting
- Potential VELB Habitat
- Yellow-Breasted Chat
Sighting

NOTE: Affected area represents the Five Dam Removal Alternative (Proposed Action). Other alternatives may have greater or lesser areas affected by the project.





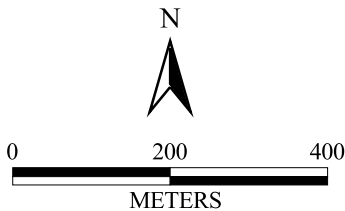
**Waters of the
United States
Documented at
Coleman Diversion Dam/
Inskip Powerhouse**

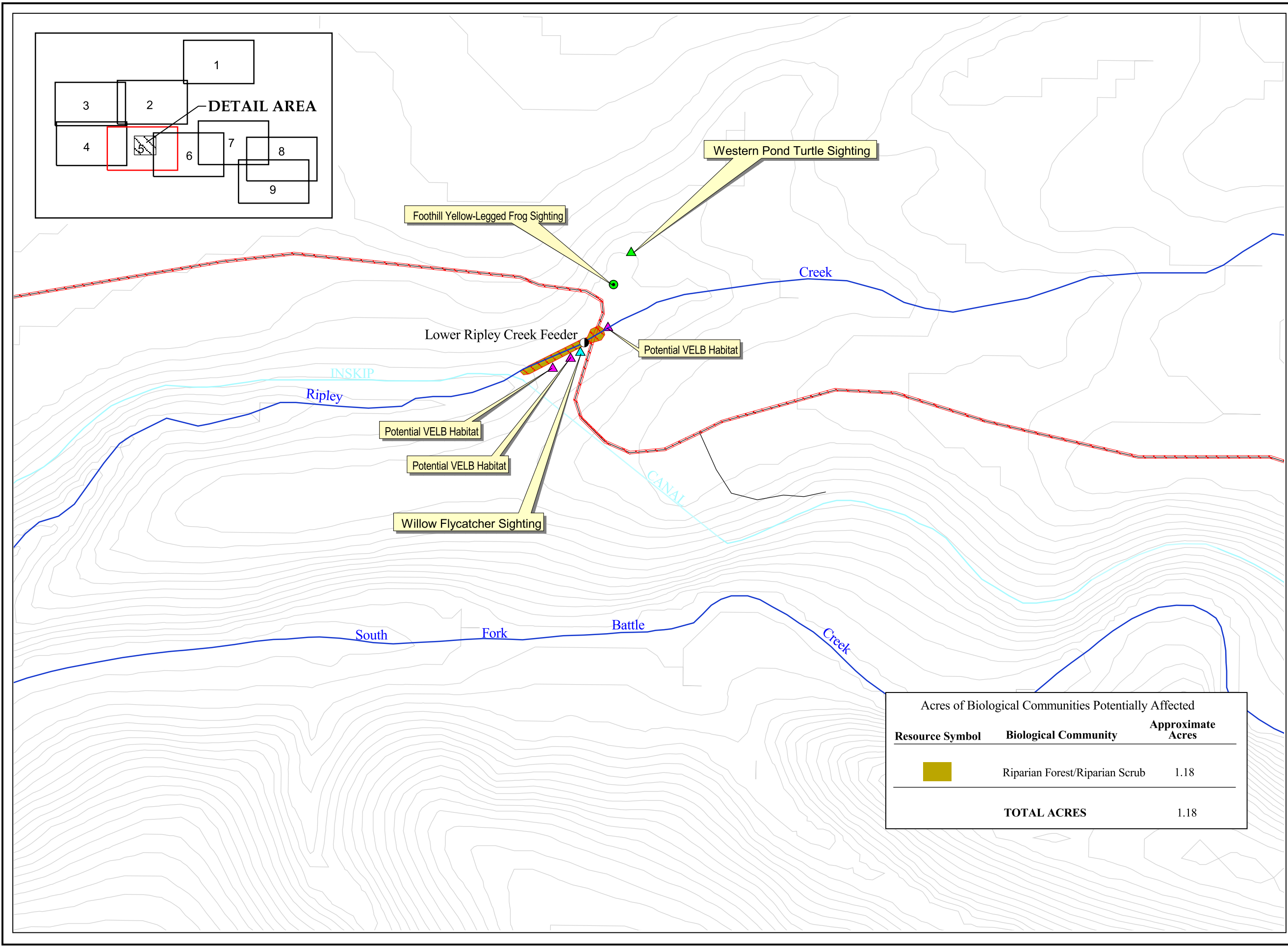
Figure 4.2-9

LEGEND

- Powerhouse
- Dam
- Road
- Construction Activity
Physical Disturbance
- Canal or Tunnel
- Contour Interval 5 Meters

NOTE: Affected area represents the Five Dam Removal Alternative (Proposed Action). Other alternatives may have greater or lesser areas affected by the project.





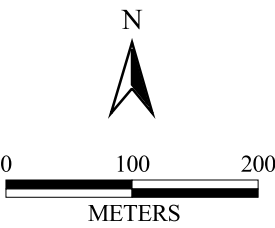
**Biological Communitess
Documented at
Lower Ripley Creek
Feeder**

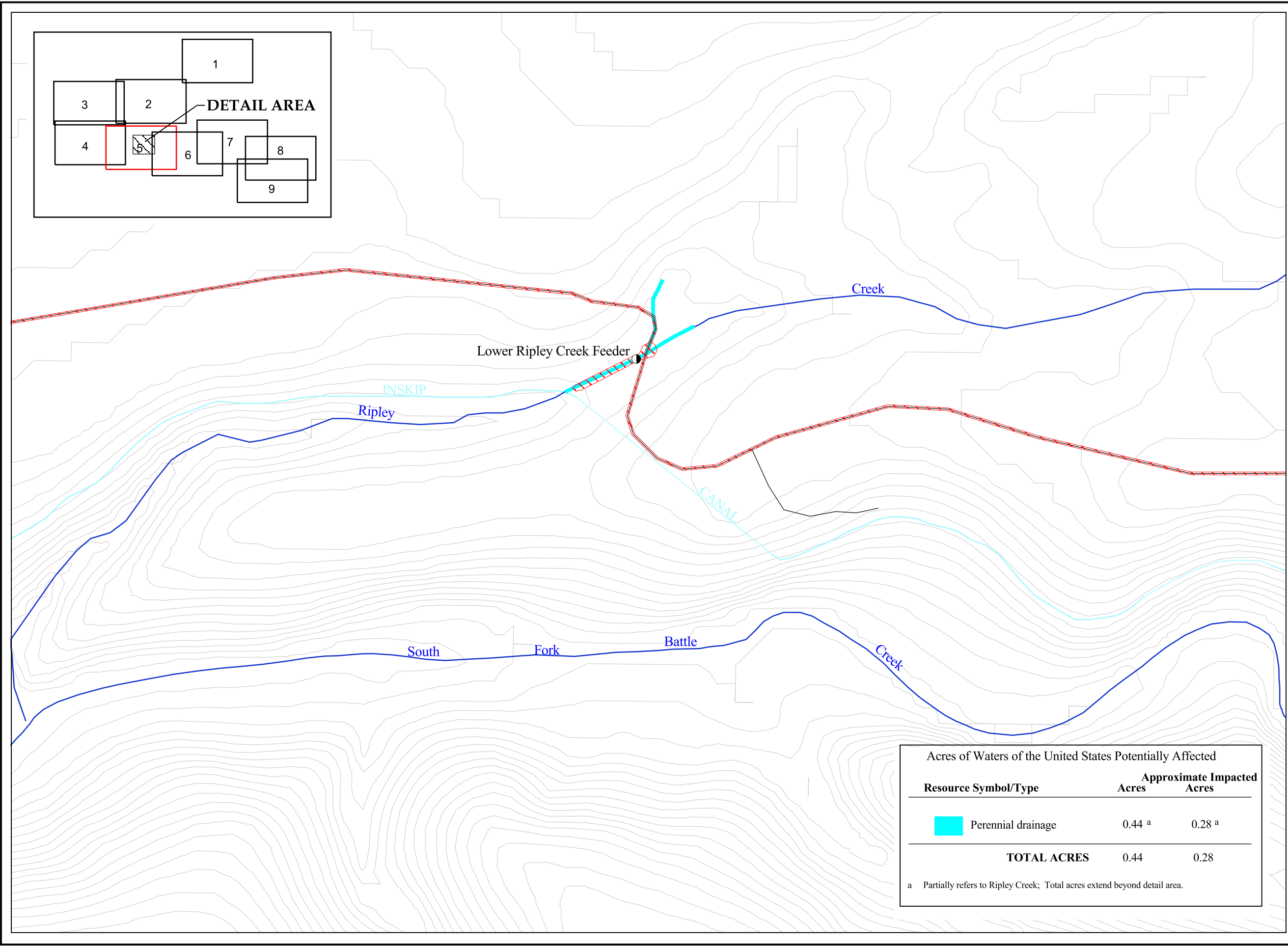
Figure 4.2-10

LEGEND

- Dam
- Road
- Construction Activity Physical Disturbance
- Canal or Tunnel
- Contour Interval 5 Meters
- Foothill Yellow-Legged Frog Sighting
- Potential VELB Habitat
- Western Pond Turtle Sighting
- Willow Flycatcher Sighting

NOTE: Affected area represents the Five Dam Removal Alternative (Proposed Action). Other alternatives may have greater or lesser areas affected by the project.






Waters of the United States Documented at Lower Ripley Creek Feeder

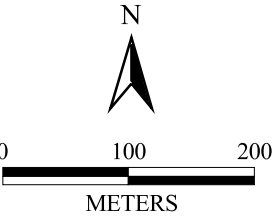
Figure 4.2-11

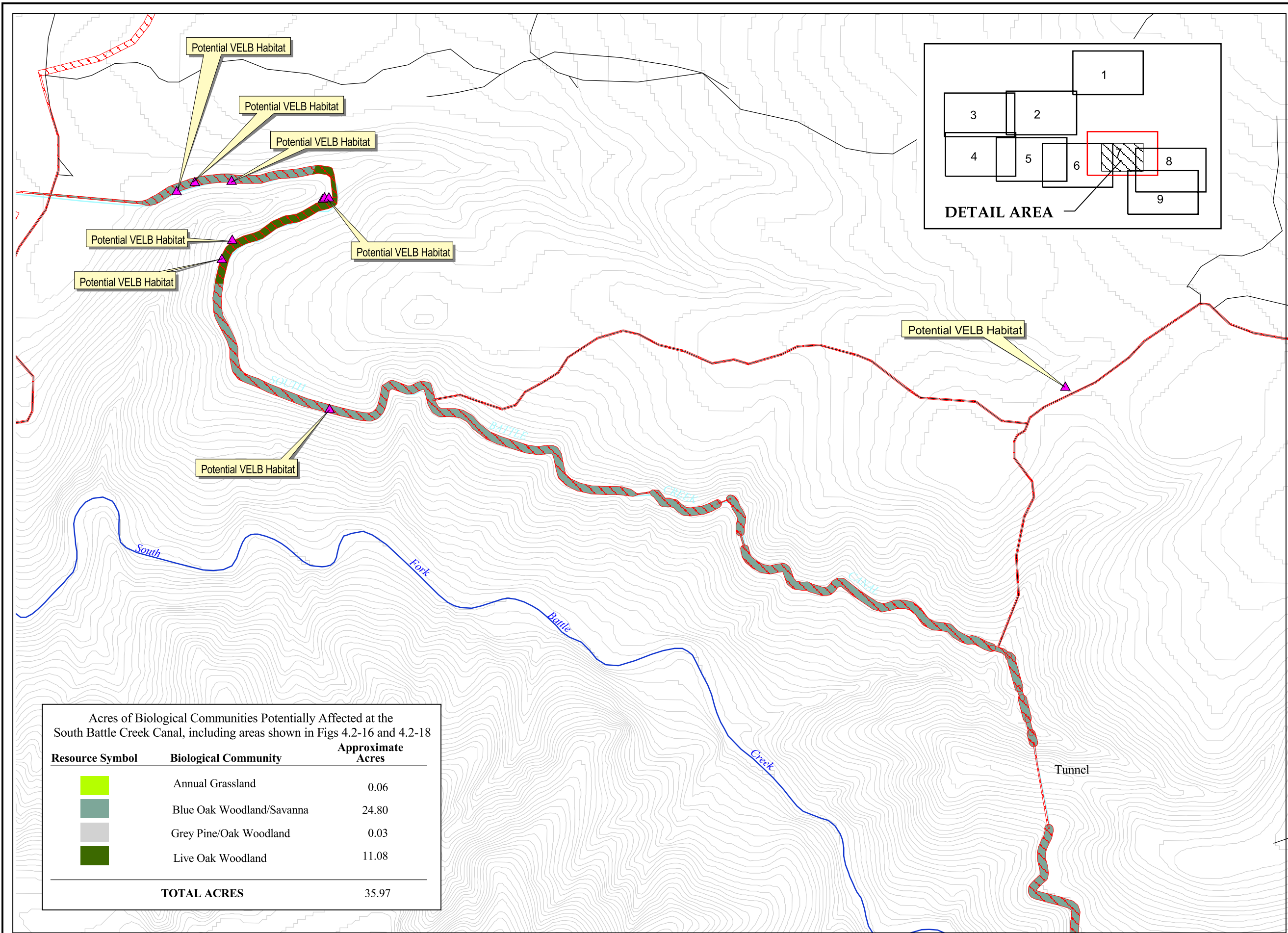
LEGEND

- Dam
- Road
- Construction Activity Physical Disturbance
- Canal or Tunnel
- Contour Interval 5 Meters

NOTE: Affected area represents the Five Dam Removal Alternative (Proposed Action). Other alternatives may have greater or lesser areas affected by the project.

Acres of Waters of the United States Potentially Affected			
Resource Symbol/Type	Acres	Approximate Impacted Acres	
 Perennial drainage	0.44 ^a		0.28 ^a
TOTAL ACRES	0.44		0.28
^a Partially refers to Ripley Creek; Total acres extend beyond detail area.			





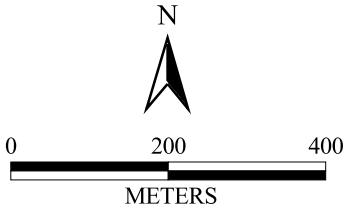
Biological Communities Documented at South Battle Creek Canal

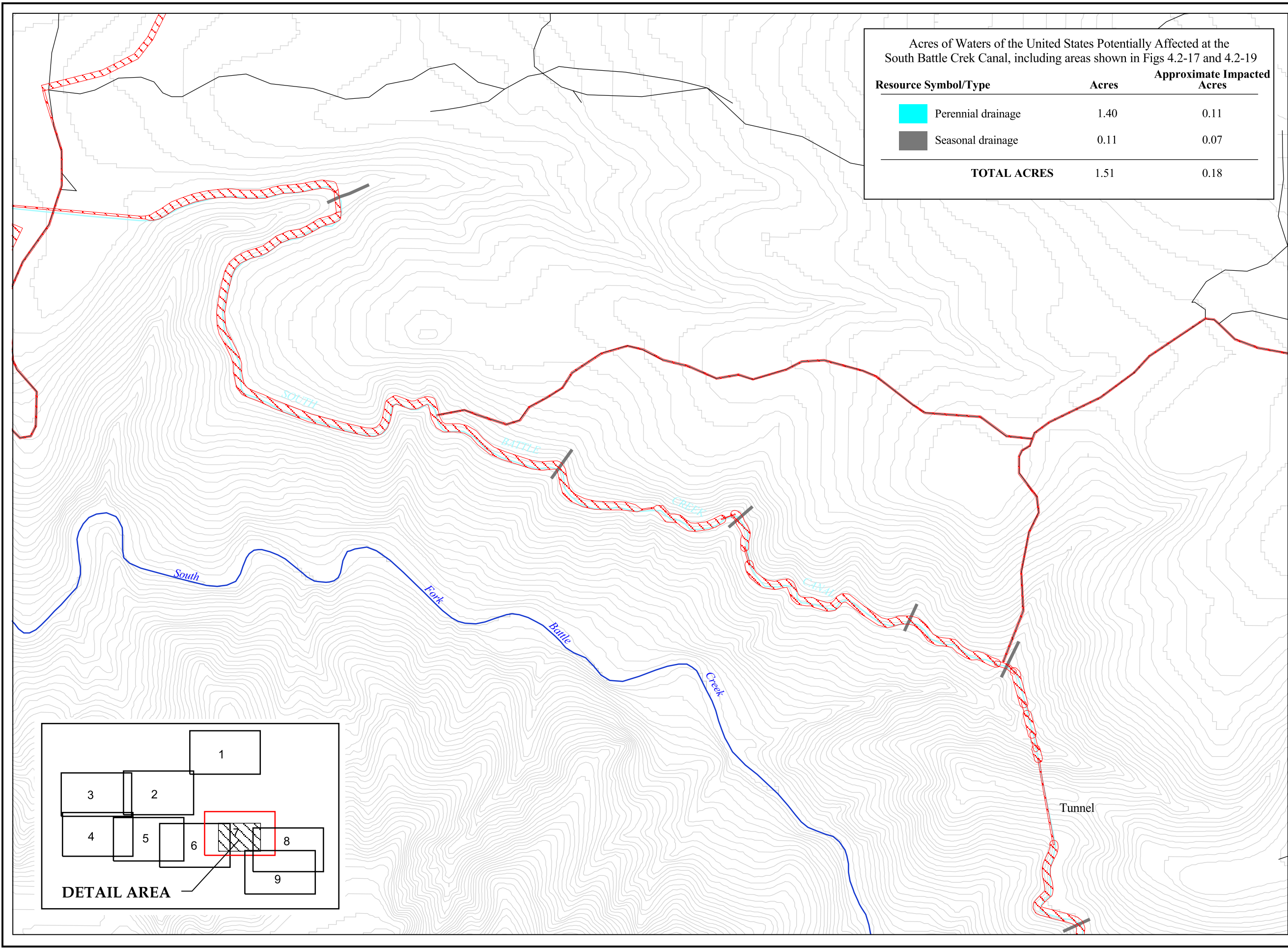
Figure 4.2-14



LEGEND

- Road
- [Red Hatched Box] Construction Activity Physical Disturbance
- Canal or Tunnel
- Contour Interval 5 Meters
- [Purple Triangle] Potential VELB Habitat

NOTE: Affected area represents the Five Dam Removal Alternative (Proposed Action). Other alternatives may have greater or lesser areas affected by the project.









Acres of Waters of the United States Potentially Affected at the South Battle Creek Canal, including areas shown in Figs 4.2-17 and 4.2-19		
Resource Symbol/Type	Acres	Approximate Impacted Acres
 Perennial drainage	1.40	0.11
 Seasonal drainage	0.11	0.07
TOTAL ACRES	1.51	0.18

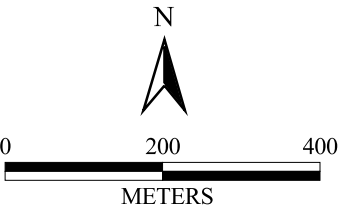
Waters of the United States Documented at South Battle Creek Canal

Figure 4.2-15

LEGEND

-  Road
-  Construction Activity Physical Disturbance
-  Canal or Tunnel
-  Contour Interval 5 Meters







NOTE: Affected area represents the Five Dam Removal Alternative (Proposed Action). Other alternatives may have greater or lesser areas affected by the project.



**Biological Communities
Documented at
South Battle Creek Canal/
Soap Creek Feeder**

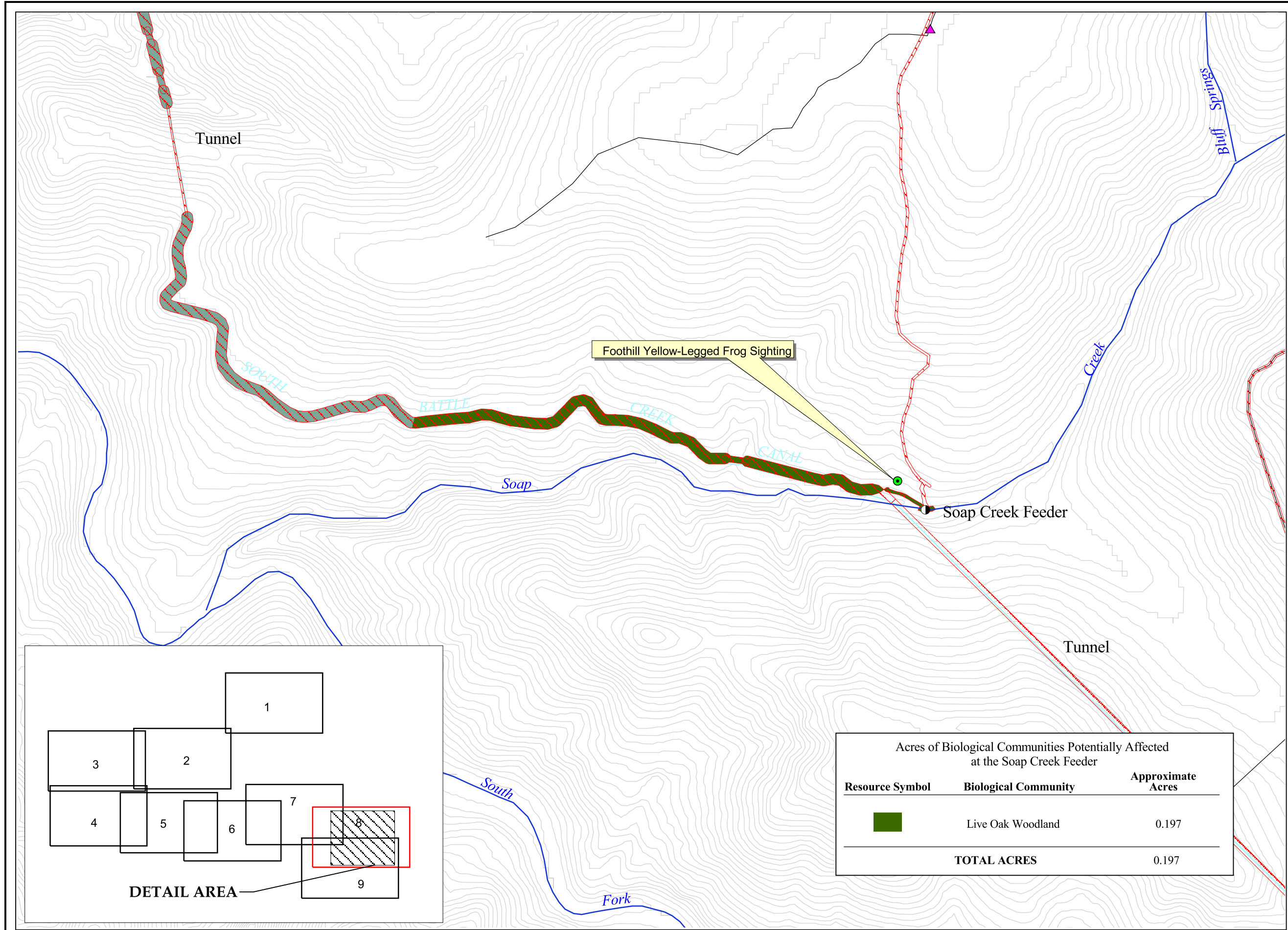
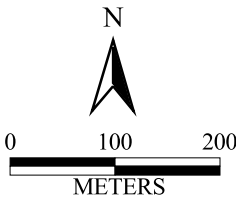
Figure 4.2-16


LEGEND

-  Dam
-  Road
-  Proposed Construction Area/
Physical Disturbance
-  Canal or Tunnel
-  Contour Interval 5 Meters
-  Foothill Yellow-Legged
Frog Sighting

NOTE: Acreage values for South Battle Creek Canal are shown in the table on Figure 4.2-14.

NOTE: Affected area represents the Five Dam Removal Alternative (Proposed Action). Other alternatives may have greater or lesser areas affected by the project.








Acres of Waters of the United States Potentially Affected at the South Battle Creek Canal, including areas shown in Figs 4.2-17 and 4.2-19		
Resource Symbol/Type	Acres	Approximate Impacted Acres
 Perennial drainage	0.112	0.022
TOTAL ACRES	0.112	0.022

Waters of the United States Documented at South Battle Creek Canal/ Soap Creek Feeder

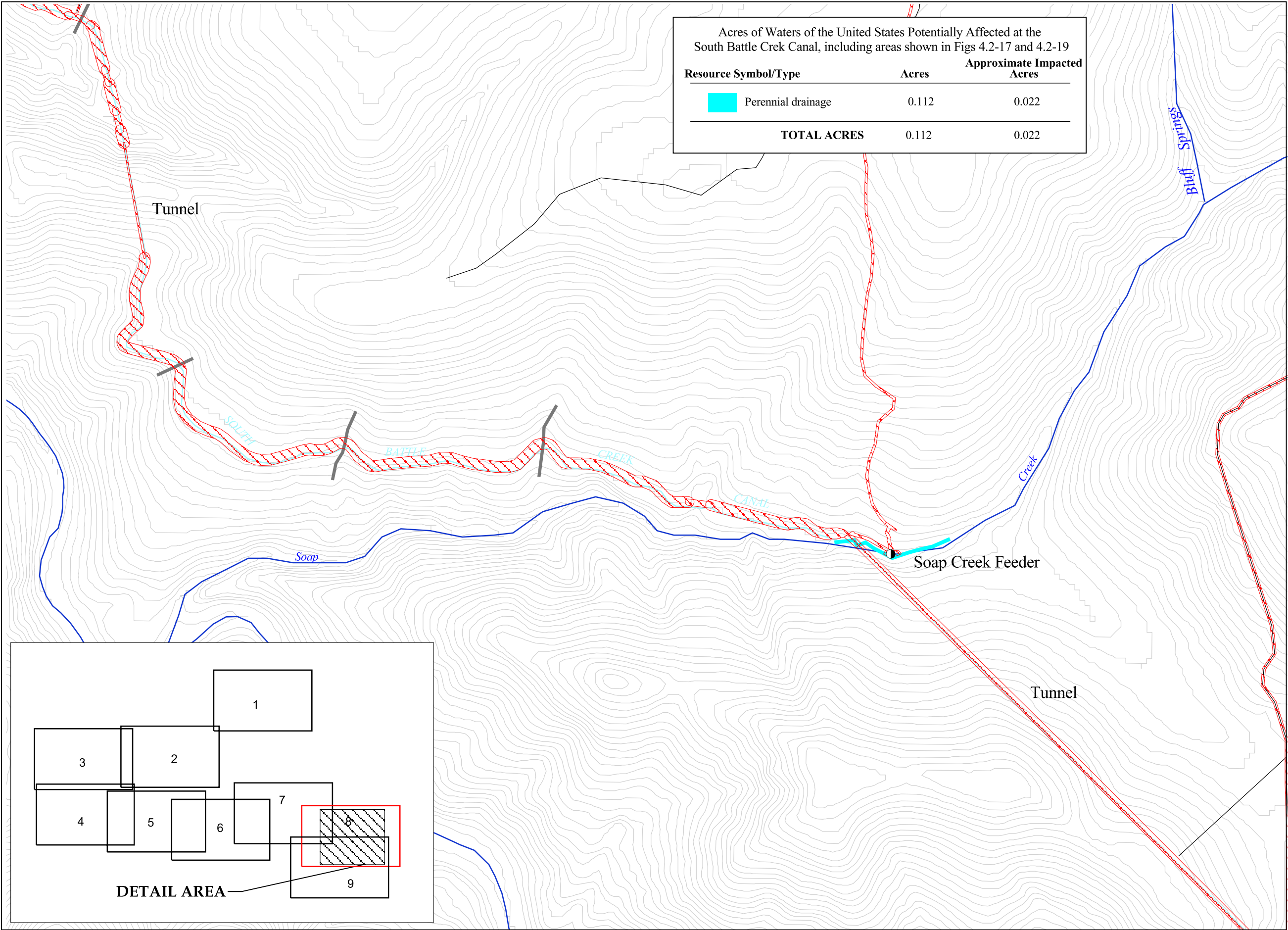
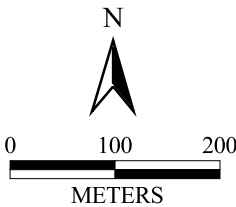
Figure 4.2-17

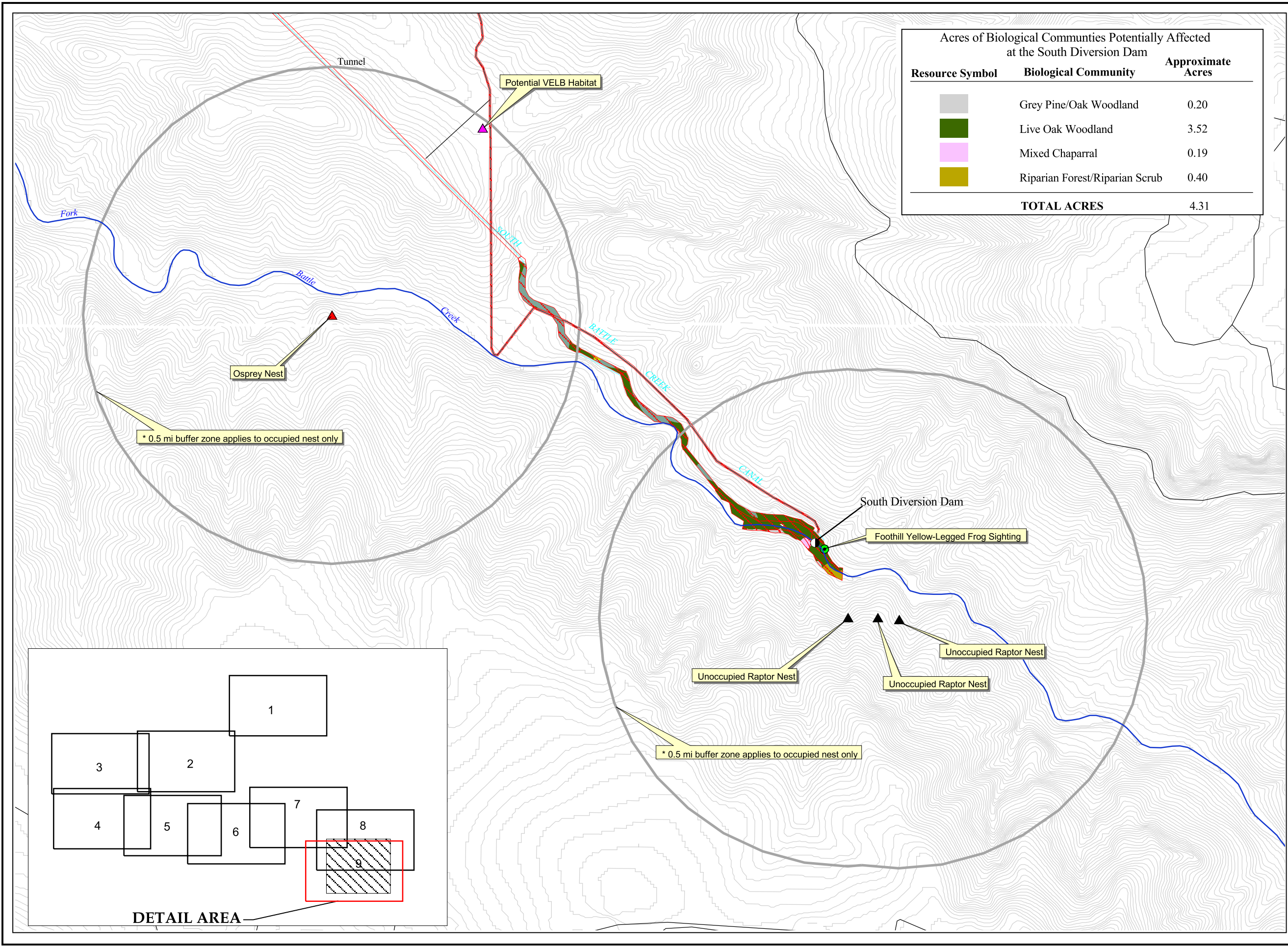
LEGEND

-  Dam
-  Road
-  Proposed Construction Area/ Physical Disturbance
-  Canal or Tunnel
-  Contour Interval 5 Meters

NOTE: Acreage values for South Battle Creek Canal are shown in the table on Figure 4.2-15.

NOTE: Affected area represents the Five Dam Removal Alternative (Proposed Action). Other alternatives may have greater or lesser areas affected by the project.





Biological Communities Documented at South Battle Creek/ South Diversion Dam

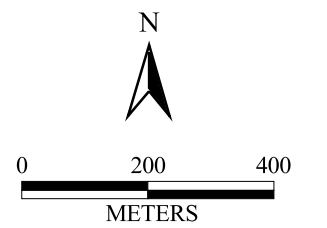
Figure 4.2-18

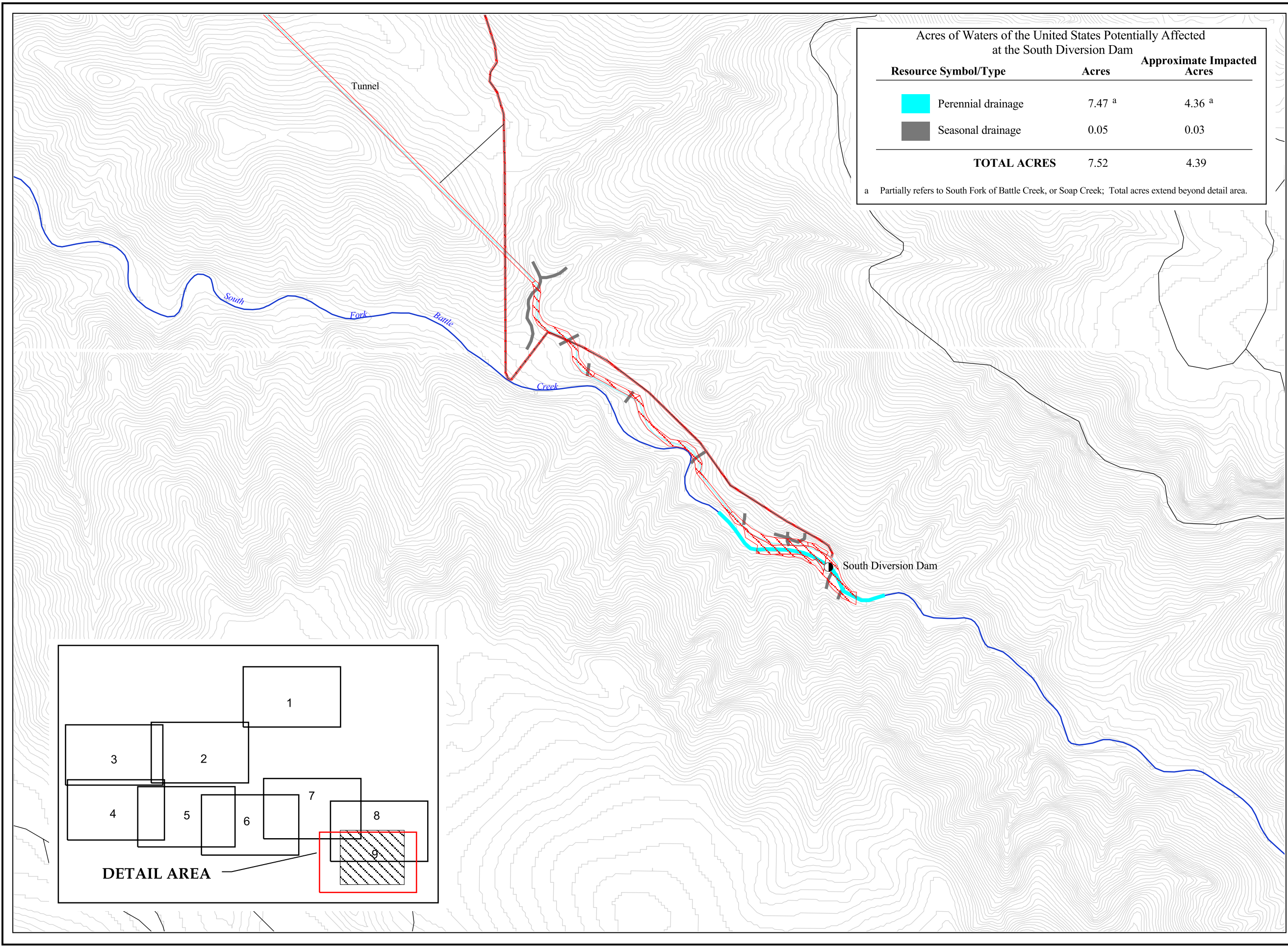
LEGEND

- Dam
- Road
- Proposed Construction Area/Physical Disturbance
- Canal or Tunnel
- Contour Interval 5 Meters
- 0.5 Mile Buffer for Old Raptor Nest*
- Foothill Yellow-Legged Frog Sighting
- Osprey Nest
- Potential VELB Habitat
- Unoccupied Raptor Nest

NOTE: Acreage values on this sheet are for the South Diversion Dam only; other acreage values are shown in the table on Fig. 4.2-14.

NOTE: Affected area represents the Five Dam Removal Alternative (Proposed Action). Other alternatives may have greater or lesser areas affected by the project.





Waters of the United States Documented at South Battle Creek/ South Diversion Dam

Figure 4.2-19