

RECLAMATION

Managing Water in the West

MID-PACIFIC CONSTRUCTION OFFICE
Willows, California

Construction Progress Report L-29



U.S. Department of the Interior
Bureau of Reclamation
Mid-Pacific Region
Mid-Pacific Construction Office

January 2018

(This Page Intentionally Left Blank)

CONSTRUCTION PROGRESS REPORT (L-29)
MID-PACIFIC CONSTRUCTION OFFICE
MID-PACIFIC REGION
January 2018

TABLE OF CONTENTS

TITLE	PAGE	
LOCATION MAP.....	i	
STAFFING.....	ii	
GLOSSARY OF TERMS.....	iii	
CONTRACT/SPECS OR P.O. NO., CONTRACTOR, AND CONTRACT NAME	PAGE NO.	MAP NO.
Central California Area Office	1	
R10PC20019.....20-C0689.....Andritz Hydro.....	3	1
Folsom Power Plant Generators U1, U2, and U3 Rewind and Excitation System Replacement – Folsom Unit, American River Division, Central Valley Project, California		
R14PC00096.....20-C0816.....Alltech Engineering Corporation.....	4	1
Nimbus Dam Radial Gate Repairs, Phase III - Nimbus Dam, American River Division, Central Valley Project, California		
Klamath Basin Area Office	7	
R17PC00083.....None.....Coleman Environmental Engineering, Inc.....	9	2
Tule Lake Road Improvement Phase 2- Klamath Project, Oregon - California		
Lahontan Basin Area Office	13	
R16PC00062.....20-C0850.....NW Constructors, Inc.....	15	3
Stampede Dam, Dam Safety Modifications - Stampede Division, Washoe Project, Nevada-California		
R17PC00063.....20-C0860.....Diana Prince Construction, Inc.....	16	4
Marble Bluff Dam and Fish Passage Facility Radial Gate Rehabilitation – Washoe Project, Nevada-California		

(This Page Intentionally Left Blank)

Northern California Area Office	19
R16PC00006.....20-C0841.....Voith Hydro, Inc.....	21.....6
Trinity Powerplant Generator Rewinds - Trinity River Division, Central Valley Project, California	
R17PC00029.....20-C0847.....Gardner Zemke.....	23.....6
Trinity River Division Powerplants Replacement of Station Service Transformers and Low Voltage Bus System – Trinity River Division, Central Valley Project, California	
R16PC00134.....20-C0852.....BCI Construction USA, Inc.....	24.....8
Whiskeytown Lake, Spring Creek Temperature Control Curtain - Trinity River Division, Central Valley Project, California	
140R2018C0001 20-C0863.....Eaton Corporation.....	25.....8
Shasta and Keswick, Powerplant Excitation System Replacements (RAX 609 and 546) – Central Valley Project California	
R17PC00103.....20-C0866.....Air-O-Service.....	26.....6
Keswick & Shasta Powerplant Weldshop Ventilation System Procurement & Installation – Shasta and Keswick Powerplant - Central Valley Project, California	
R17PC00091.....20-C0869.....Tompco-Triton.....	28.....7
Intake 3 Trash Rake, Coleman National Fish Hatchery, Shasta Division, Central Valley Project, California	
R17PC00092.....None.....Purgatory Fence Company, Inc.....	29.....6
Install K12 Rated Vehicle Barriers at Keswick, Shasta and Trinity Power Plants Shasta and Trinity Division, Central Valley Project, California	
South-Central California Area Office	33
San Joaquin River Restoration Program	37
R16PC00110 20-C0853.....BCI Construction USA, Inc.....	39
Madera Canal Headworks Low-Flow Valve – San Joaquin River Restoration Program, Friant Division, Central Valley Project, California	
Mid-Pacific Regional Office	41
R16PC00091.....20-C0843.....TNT Industrial Contractors, Inc.....	43.....9
North Fork Screens and Ladders Completion Contract - Battle Creek Salmon and Steelhead Restoration Project, California	

(This Page Intentionally Left Blank)

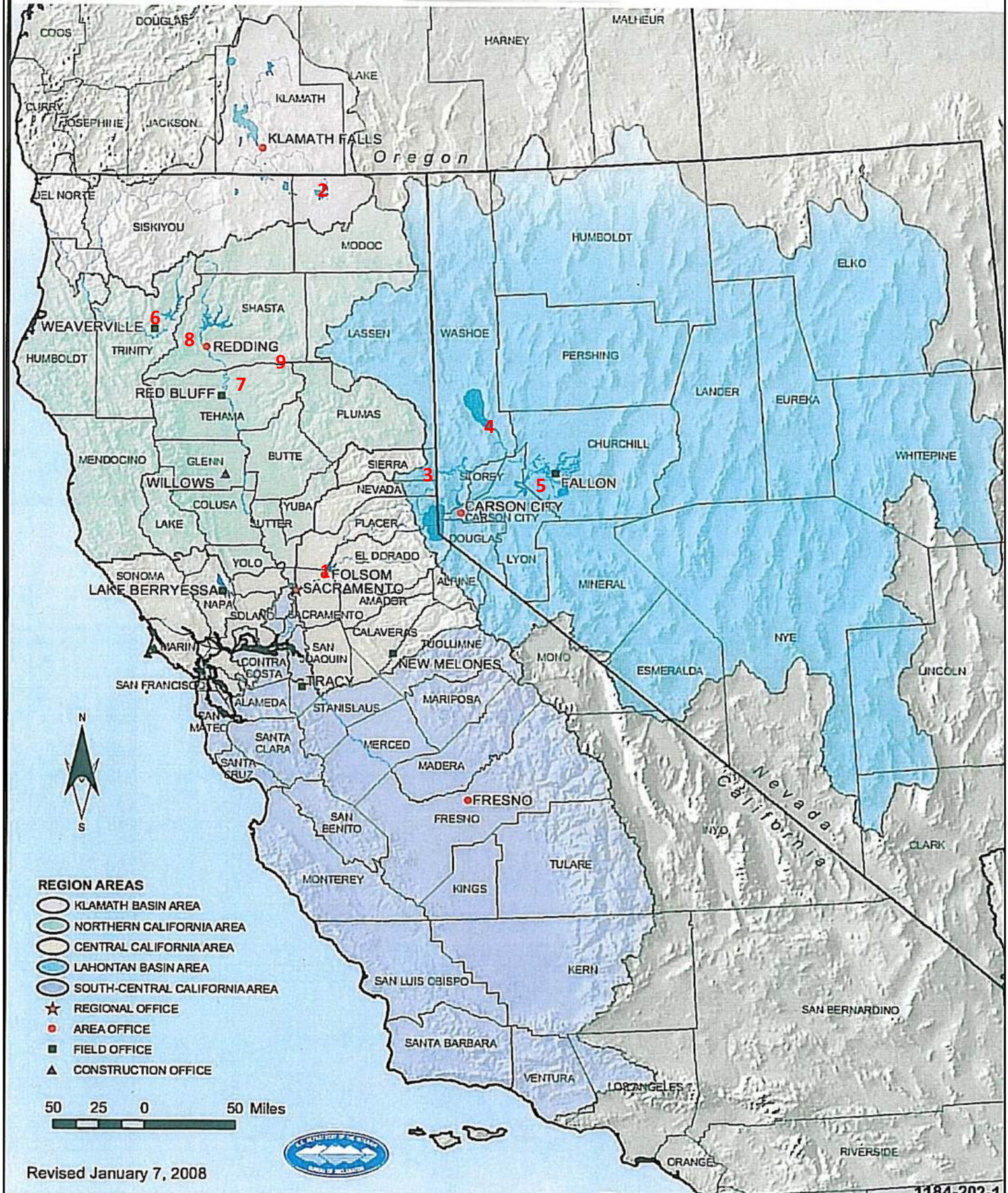
Contracts in Warranty Status	47
R11PC20185.....20-C0778.....	49
Tracy 13.8kV Switchgear/Breaker Replacement – Tracy Pumping Plant and Substation, Delta Division, Central Valley Project, California	
R13PC20159.....20-C0819.....GD Nielson Construction, Inc.....	49
Lake Berryessa Concessions Areas Improvements – Lake Berryessa, Solano Project, California	
R16PC00079.....20-C0851.....E.C. Smith, Inc.....	49
Red Bluff Flap Gate Retrofit - Sacramento Canals Unit, Sacramento River Division, Central Valley Project, California	
R17PC00022.....20-C0857.....Salter and Sons Construction.....	49
Western Tracy Switchyard, Chain Link Fence Project - Tracy Pumping Plant and Substation, Delta Division, Central Valley Project, California	
R16PC00099.....None.....Chigosi Company.....	49
Folsom Resource Building – Folsom Unit, American River Division, Central Valley Project, California	
R16PC00100.....None.....Construction Solutions Group, LLC.....	49
Lake Woollomes Recreation Area Asphalt Replacement - Central Valley Project, California	
R15PC00080.....20-C0836.....Andrews Contracting Services, LLC.....	49
Klamath Basin Area Office Sewer Lift Station - Klamath Basin Area Office, Klamath Falls Oregon	
R16PC00111.....20-C0855.....BCI Construction USA, Inc.....	49
San Joaquin Hatchery Water Supply Pipeline – San Joaquin River Restoration Program, Friant Division, Central Valley Project, California	
R17PC00067.....None.....Lahontan Dam Rated Vehicle Barrier System.....	50
Lahontan Basin Area Office, Newlands Project, Nevada, Sparks Nevada	
R16PC00075.....20-C0838.....Folsom UHA Switchgear Replacement – Folsom Unit, American River Division, Central Valley Project, Redding, CA	50
R17PC00100.....Folsom Dam Auxiliary Spillway American River Phase V – Right Bank Stabilization, Folsom Unit, American River Division, Central Valley Project, California	50
R15PC00089.....20-C0831.....Intake 3 Screen Extension, Coleman National Fish Hatchery, Shasta Division, Central Valley Project, California	50
Lab Reports	51
Stampede Safety of Dams Project Lab Reports.....	53
North Fork Screens and Ladders Completion Contract Lab Reports.....	55

(This Page Intentionally Left Blank)

Areas in the Mid-Pacific Region Where Work was Performed

Mid-Pacific Region

RECLAMATION
Managing Water in the West



(This Page Intentionally Left Blank)

STAFFING

MID-PACIFIC CONSTRUCTION OFFICE

The Mid-Pacific Construction Office had 32 construction and administrative employees at the close of this month as follows:

Construction Engineer's Office.....	1
Preaward and Project Management Group.....	3
Administrative Management.....	5
Division of Field Engineering.....	17
Division of Office Engineering.....	4
Materials Lab Branch.....	3

(This Page Intentionally Left Blank)

GLOSSARY

ACRONYMS AND ABBREVIATIONS

ACRONYM	MEANING
CCAO	Central California Area Office
CVP	Central Valley Project
KBAO	Klamath Basin Area Office
LBAO	Lahontan Basin Area Office
MP	Mid-Pacific Regional Office
MPCO	Mid-Pacific Construction Office
NCAO	Northern California Area Office
SCCAO	South Central California Area Office
SJRRP	San Joaquin River Restoration Program
TO	Tracy Office

(This Page Intentionally Left Blank)

Central California Area Office

(This Page Intentionally Left Blank)

Contract No. R10PC20019
Specification No. 20-C0689
Folsom Power Plant Generators U1, U2, and U3 Rewind and
Excitation System Replacement - Folsom Unit, American River
Division, Central Valley Project, California
Andritz Hydro, Charlotte, NC

Work Performed	January	0.0%
	Time Elapsed	100.0%
	Work Completed	100.0%
Contractor Earnings	January	\$0.00
	Previous	\$20,610,792.74
	Total to Date	\$20,610,792.74

Area Office Project Management

Project Manager: Jonathan Rogado, MP-250

Office Engineering

Contract Manager: Larry Bowman, MPCO-240

All parties agreed that the following list of work remains open. Prior to contract completion the following work will be performed:

Acceptance testing for Unit 3.

Remaining warranty inspections for Units 1, 2, and 3.

Final submittals (including As-builts and O&M Manuals).

Field Engineering

Construction Manager: Reynaldo Garcia, MPCO-310

Construction Representative: Todd Dooley, MPCO-314.

Number of Contractor Employees: 1

Work Performed

No onsite work performed this reporting period

Contract No. R14PC00096
Specification No. 20-C0816
Nimbus Dam Radial Gate Repairs, Phase III – Nimbus Dam,
American River Division, Central Valley Project, California
Alltech Engineering Corporation, Mendota Heights, MN

Work Performed	January	0.0%
	Time Elapsed	61.1%
	Work Completed	62.9%

Contractor Earnings	January	\$0.00
	Previous	\$10,914,602.31
	Total to Date	\$10,914,602.31

Area Office Project Management

Project Manager: Jonathan Rogado, MP-250

Office Engineering

Contract Manager: Larry Bowman, MPCO-240

No invoice was received this reporting period.

Field Engineering

Construction Manager: Reynaldo Garcia, MPCO-310

Construction Representative: Michael Manlick, MPCO-313

Number of Contractor Employees: 18

Work Performed

Alltech is utilizing down-time on the radial gate repairs (Flood Season) to perform concrete and mortar repairs on the spillway of Gate #9 in accordance with Contract Modification #0012.

On Monday, January 8th, a clearance was placed, locking-out the motor controls to gate #9. This immobilized the gate in the closed position and allowed Alltech to commence work on the downstream concrete spillway. A Special Work Permit was issued by MPCO to the contractor prior to commencing the repair work.

Safeway Scaffolding erected scaffolding on the spillway, providing ladder access from the bridge deck, down to the spillway. Platforms were installed in a stair-stepped configuration across the top, bottom and along both sides of Site #1, the main concrete repair area in the center of the spillway. Scaffolding was also installed at the much smaller mortar repair areas (Sites #2 and #3).

Penhall used water-supplied cut off saws fitted with diamond concrete blades to saw-cut the perimeter of the repair area at Site #1. Two workers used pneumatic chipping hammers with sharp pointed bits to jackhammer and remove concrete. The concrete was removed to the depths shown on the contract drawing (7-inches on Site #1). A small chipping hammer with a chisel-

point bit was used to remove the loose material at the mortar repair Sites #2 and #3. All water/slurry, waste, and debris was controlled and removed with a trailer mounted wet vacuum.

Alltech cut the existing waterstop above the damaged area and spliced-in a new piece of the approved waterstop using a pre-molded splice coupling. The crew also marked the locations where 22 reinforcing dowels will be epoxied into the existing concrete substrate to hold a rebar reinforcing mat.

Penhall used a diamond tipped, water lubricated, electric core driller to bore through the large-aggregate (6" minus) permeating the existing concrete. The 22 dowel holes required roughening with a specially designed bit. This work remains to be completed as the contractor is in the process of procuring the required bit.

. (This Page Intentionally Left Blank)

Klamath Basin Area Office

(This Page Intentionally Left Blank)

Contract No. R17PC00083

Specification No. None

Tule Lake Road Improvement Phase 2- Klamath Project, Oregon - California

Coleman Environmental Engineering, Inc., Upper Lake, CA

Work Performed	January	36.3%
	Time Elapsed	58.8%
	Work Completed	61.1%

Contractor Earnings	January	\$245,416.00
	Previous	\$167,400.00
	Total to Date	\$412,816.00

Area Office Project Management

Project Manager: Mike Green, KO-400

Office Engineering

Contract Management: Amber Pierce, MPCO-205

Invoice No. 2 was received during this period in the amount of \$245,416.00 for work that was performed during the month of December 2017

Field Engineering

Field Engineer: Brian Wagner, MPCO-300

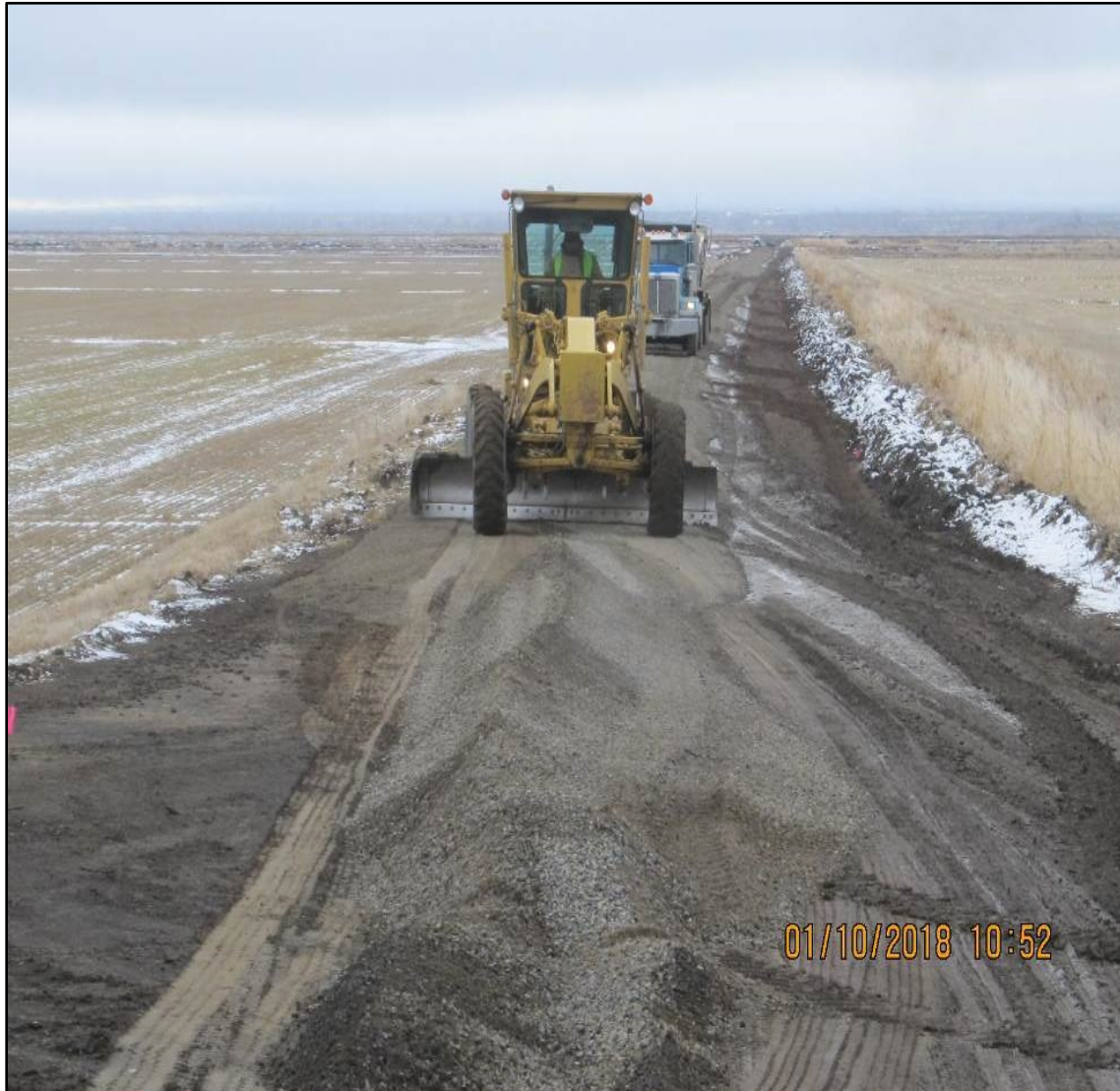
Onsite Government Representative: Dennis Schuenemann, MPCO-338.

Number of Contractor Employees: 4

Work Performed

The contractor, Coleman Environmental Engineering (CEE) Inc., worked ten days during this month (Jan 8, 2018 through Jan 19, 2018).

4-inch minus base rock was placed on the six roads where depressions or voids were present. 3/4-inch gravel surfacing was placed on these six roads to complete Pump 10 Road east, between Pole Line Road and Highway 111. 4-inch gravel surfacing was placed on the six roads completing Pump 11 Road east, between Pole Line Road and Highway 111. 3/4-inch gravel surfacing on the six roads completing East Road between Pump 11 Road and 'B' Dike Road. 3/4-inch gravel surfacing was placed on the six roads to complete Middle 'A' Dike Road between Pump 11 Road East and Pump 10 Road East. 3/4-inch gravel surfacing was placed on the six roads, completing Hovey Point Road. All roads were re-bladed after proof rolling was performed. Finally, the roads were bladed a second time, before final proof rolling.



Tulelake Road Improvement Project, Phase 2 - Coleman Environmental Engineering Inc.
A CAT 130G grader leveling 3/4-inch minus gravels on East Rd. and a belly dump behind the grader.



Tulelake Road Improvement Project, Phase 2 - Coleman Environmental Engineering Inc.
Grader completing the last 6' wide section of the 20' wide East Road at the return onto "B" Dike Road.

(This Page Intentionally Left Blank)

Lahontan Basin Area Office

(This Page Intentionally Left Blank)

Contract No. R16PC00062
Specification No. 20-C0850
Stampede Dam, Dam Safety Modifications - Stampede Division,
Washoe Project, Nevada-California
NW Constructors, Inc., Bozeman, MT

Work Performed	January	0.0%
	Time Elapsed	73.0%
	Work Completed	74.9%

Contractor Earnings	January	\$0.00
	Previous	\$17,276,311.56
	Total to Date	\$17,276,311.56

Area Office Project Management

Project Manager: Todd Hill, MP-240

Office Engineering

Contract Manager: Kent Perkes, MPCO-225

Field Engineering

Construction Manager: Kyle Hughes, MPCO-324

Construction Representative: Zahid Wazid, MPCO-349; Sean Hill, MPCO-328,

Number of Contractor Employees: 0

Work Performed

No onsite work performed during this period. The project is closed for the winter.

Contract No. R17PC00063
Specification No. 20-C0860
Marble Bluff Dam and Fish Passage Facility Radial Gate
Rehabilitation - Washoe Project, Nevada-California
Diana Prince Construction, Inc., Irvine, CA

Work Performed	January	24.1%
	Time Elapsed	90.0%
	Work Completed	75.3%
Contractor Earnings	January	\$214,107.18
	Previous	\$455,623.60
	Total to Date	\$669,730.78

Area Office Project Management

Project Manager: Steven Sprague, LO-470

Office Engineering

Contract Administrator: Madelyn Giles, MPCO-230

Invoice 05 was received this reporting period, in the amount of \$214,107.18, for work performed from December 1, 2017 to December 31, 2017.

Field Engineering

Construction Engineer: Reynaldo Garcia, MPCO-310

Construction Representative: Todd Dooley, MPCO-314, Bill Linder, MPCO-312

Number of Contractor Employees: 3

Work Performed

DPC removed and reinstalled the hydraulic cylinder from gate 9 with the assistance of LBAO personnel in doing this work. The cylinder was transported to Remo Hydraulic where it was rebuilt with new seals and tested. After reinstallation at the site, the cylinder was operated approximately 6 times to confirm it operated correctly with no leaks.

During the month DPC, prepared for demobilization. The forklift was prepped for pick up from the rental company, tools and small equipment were placed in the storage area into a tool box readying them for shipping to Portland OR. By the end of the month the contractor completed demobilization and will return in the summer to complete the work. The river was too high and the contractual window for in water work within the river had passed. A no cost modification to the contract extending the performance period to August 31, 2018 will be executed soon.

Electrical Subcontractor PEC was onsite January 10, 2018 for a shift. They had two items that they planned on doing, one place the correct fuses in the dope hoist cabinet and label the wiring in the LFBP cabinet for the lighting terminal block.

(This Page Intentionally Left Blank)

Northern California Area Office

(This Page Intentionally Left Blank)

Contract No. R16PC00006
Specification No. 20-C0841
Trinity Powerplant Generator Rewinds - Trinity River Division,
Central Valley Project, California
Voith Hydro, Inc., York, PA

Work Performed	January	0.0%
	Time Elapsed	83.0%
	Work Completed	77.7%

Contractor Earnings	January	\$0.00
	Previous	\$10,380,281.06
	Total to Date	\$10,380,281.06

Area Office Project Management

Project Manager: Joe Ascoli, NC-650

Office Engineering

Contract Administrator: Madelyn Giles, MPCO-230

Invoice 08 was received this reporting period, but was rejected and returned for being incorrect.

Field Engineering

Field Engineer: Brian Wagner, MPCO-300

Construction Manager: Stephen Holmes, MPCO-320

Number of Contractor Employees: 14

Work Performed

After the New Year a partial crew returned from holiday break and resumed installation of the armature bars.

The “Wedging” operation began. This consisted of: Installing permanent wedges in the core slots holding the Roebel armature winding bars in place, application of a paraffin wax to the back surface of wedges for lubrication when driving wedges over ripple springs.

Mounting 1-inch ridged steel conduit behind the upper winding connections for the air gap monitoring system sensors that will be installed prior to painting of the stator core. The anchor strap holes were drilled then tapped. Locktight was applied to the bolts.

RTD junction cabinet were installed outside the unit and grounded all RTD winding and stator core leads in preparation for testing.

Brazing upper and lower Roebel bar connections and cooling machines work was performed.

Stator bore cleaning.

Progressive high voltage tests were performed on the upper and lower bars installed after the wedging operation was complete to ensure bars were not damaged during the wedging process. Insulating blankets were tucked between exposed ends of the bars and any steel brackets in the area.

Painting of the copper series connections with the non-conductive coating was completed, which is the same finishing paint used on the interior surface of the stator core. The crew inserted G10 fiberglass blocks sandwiched between epoxy saturated felt between the top bar gaps, and later wrapped with fiberglass cord.

Terminations of lead RTDs for the stator core and armature winding in the RTD cabinet outside the unit were worked on.

Direction was given by the Contracting Officer (CO) to accelerate the rotor pole delivery and installation. Voith is to submit a new schedule and cost proposal by Tuesday January 30, to the CO for refurbishment and completion of the rotor poles.

Contract No. R17PC00029
Specification No. 20-C0847
Trinity River Division Powerplants Replacement of Station
Service Transformers and Low Voltage Bus System – Trinity
River Division, Central Valley Project, Trinity and Shasta
Counties, California
Gardner Zemke, Albuquerque, NM

Work Performed	January	0.0%
	Time Elapsed	42%
	Work Completed	7%
Contractor Earnings	January	\$0.00
	Previous	\$198,072.00
	Total to Date	\$198,072.00

Area Office Project Management

Project Manager: Laurie Larson, NC-211

Office Engineering

Contract Administrator: Madelyn Giles, MPCO-230

Field Engineering

Field Engineer: Brian Wagner, MPCO-300

Construction Manager: Stephen Holmes, MPCO-320

Number of Contractor Employees: 0

Work Performed:

No onsite work was performed during this reporting period.

Contract No. R16PC00134
Specification No. 20-C0852
Whiskeytown Lake, Spring Creek Temperature Control Curtain -
Trinity River Division, Central Valley Project, California
BCI Construction USA, Inc., Belleville IL

Work Performed	January	0.0%
	Time Elapsed	100.0%
	Work Completed	99.5%
Contractor Earnings	January	\$0.00
	Previous	\$1,935,495.01
	Total to Date	\$1,935,495.01

Area Office Project Management

Project Manager: Robert Gee, NC-230

Office Engineering

Contract Manager: Amber Pierce, MPCO-205

Field Engineering

Field Engineer: Brian Wagner, MPCO-300

Construction Manager: Stephen M. Holmes, MPCO-320, Russell Davies, MPCO-341

Number of Contractors Employees: 0

Work performed

No onsite work was performed during this period.

Contract No. 140R2018C0001
Specification No. 20-C0863
Shasta and Keswick Powerplant Excitation System
Replacements (RAX 609 and 546) – Central Valley Project,
California
Eaton Corporation, Raleigh, NC

Work Performed	January	0.0%
	Time Elapsed	0.0%
	Work Completed	0.0%
Contractor Earnings	January	\$0.00
	Previous	\$0.00
	Total to Date	\$0.00

Area Office Project Management

Project Manager: Laurie Larson, NC-211

Office Engineering

Contract Administrator: Larry Bowman, MPCO-240

This contract was awarded on November 20, 2017 in the amount of \$5,457,336.00.

Notice to Proceed was issued on January 4, 2018.

No invoice was received this reporting period

Field Engineering

Field Engineer: Brian Wagner, MPCO-300

Construction Manager: Steve Holmes, MPCO-320

Subcontractors:

Number of Contractor Employees: 0

Work Performed:

No onsite work performed this reporting period.

Contract No. R17PC00103
Specification No. 20-C0866
Keswick & Shasta Powerplant Weldshop Ventilation System
Procurement & Installation - Shasta and Keswick Powerplant -
Central Valley Project - California
Air-O-Service, Redding, CA

Work Performed	January	0.00%
	Time Elapsed	79.9%
	Work Completed	0.00%
Contractor Earnings	January	\$0.00
	Previous	\$0.00
	Total to Date	0.00

Area Office Project Management

Project Manager: Thomas Darlington, NC-232

Office Engineering

Contract Administrator: Casandra Arthur, MPCO-111

No invoices were received during this reporting period.

Field Engineering

Construction Manager: Stephen Holmes, MPCO-320

Construction Representative: David Derk, MPCO-334

Number of Contractor Employees: 3

Work Performed

At the beginning of the month, the contractor and subcontractors received the Hazardous Energy Control Program (HECP) training and conducted the Contractor Safety Program Review meeting. The contractor then returned to the site and completed demolition and removal of all existing ventilation equipment at Keswick Powerplant welding shop.



**Keswick Powerplant Weldshop
Removal of the existing ventilation system**

Contract No. R17PC00091
Specification No. 20-C0869
Intake 3 Trash Rake, Coleman National Fish Hatchery, Shasta
Division, Central Valley Project, California
Tompco-Triton, Seabeck, WA

Work Performed	January	0.0%
	Time Elapsed	30.0%
	Work Completed	1.1%
Contractor Earnings	January	\$0.00
	Previous	\$16,143.00
	Total to Date	\$16,143.00

Area Office Project Management

Project Manager: Hank Harrington, NC-210

Office Engineering

Contract Manager: Kent Perkes, MPCO-225

Processing Request for Change No. 002, Relocation of Control Panel.

Field Engineering

Field Engineer: Brian Wagner, MPCO-300

Construction Representative: Fernando Pavone, MPCO-333

Number of Contractor Employees: 0

Work Performed

No onsite work was performed during this period.

Contract No. R17PC00092

Specification None

Install K12 Rated Vehicle Barriers at Keswick, Shasta and Trinity Power Plants

Shasta and Trinity Division, Central Valley Project, California

Purgatory Fence Company, Inc., Boise, ID

Work Performed	January	50.4%
	Time Elapsed	19.0%
	Work Completed	56.5%

Contractor Earnings	January	\$243,300.00
	Previous	\$29,700.00
	Total to Date	\$273,000.00

Area Office Project Management

Project Manager: Robert Gee, NC-230

Office Engineering

Contract Manager: Amber Pierce, MPCO-205

Invoice Nos. 3 and 4 were received in the amounts of \$63,300.00 and \$180,000.00, respectively. The amounts invoiced were for work performed during the months of November, December and January.

Field Engineering

Field Engineer: Brian Wagner, MPCO-300

Construction Manager: Stephen Holmes, MPCO-320.

Number of Contractor Employees: 6

Work Performed

Weekly coordination meetings were held throughout the month of January. Concrete and asphalt were removed from the old barrier location and recycled.

The existing gate and hydraulic panel at Keswick was disassembled and removed from the site. The contractor excavated the areas prior to installing steel reinforced concrete foundations with anchor bolts. Concrete was placed for the two new barrier pedestals. Three new barrier gates were delivered to the Keswick site. A new K12 rated barrier was installed at Keswick. All anchor bolts were tightened to 150-ft-lbs on the control and receiver posts. The contractor assembled and installed the dual arms, installed the new control box, and completed the wiring between the gate control panel and control box. Warning lights were installed and the electrical

connections were completed. After power was restored to the gate, the contractor tested the vehicle barrier operation. After barrier installation was complete, the barrier arm raised and lowered with smooth action.



New barrier installed at Keswick looking downstream from power plant

(This Page Intentionally Left Blank)

South Central California Area Office

(This Page Intentionally Left Blank)

There was no work performed during this period for the South Central California Area Office.

(This Page Intentionally Left Blank)

San Joaquin River Restoration Program

(This Page Intentionally Left Blank)

Contract No. R16PC00110
Specification No. 20-C0853
Madera Canal Headworks Low-Flow Valve - Friant Division,
Central Valley Project, California
BCI Construction USA, Inc., Belleville, IL

Work Performed	January	0.0%
	Time Elapsed	100.0%
	Work Completed	90.1%
Contractor Earnings	January	\$0.00
	Previous	\$1,628,090.78
	Total to Date	\$1,628,090.78

Area Office Project Management

Project Manager: Adam Nickels, MP-153

Office Engineering

Contract Administrator: Larry Bowman, MPCO-240

No invoice was received this reporting period.

Field Engineering

Field Engineer: Brian Wagner, MPCO-300

Construction Representative: Fernando Pavone, MPCO-333

Number of Contractor Employees: 3

Work Performed

Subcontractor AC Electric installed the new electrical box for the Human Machine Interface (HMI). The crew mounted the box at the location designated by BOR Friant Dam personnel inside the electrical room. The crew ran electrical conduits from the existing PLC control box to the new HMI box. After the box was mounted, AC technician worked with BOR technician with the installation of the new software for the new HMI controls. During the installation, it was noticed that there were some problems with the curve scaling and some adjustments with the program were required to make it work correctly. AC technician informed BOR technician that he believed the program was ready to be uploaded into the system. The next day the BOR technician attempted to upload the new program into the existing PLC and it was noticed that the size of the new files were too big for the existing PLC memory because it contained the flow curve tables.

Subcontractor AC Electric technician and BOR technicians used the existing program for the PLC and worked on checking the signal communication between the new valve rotor and the new HMI panel through the existing PLC. By the end of the work shift some signals were showing on the HMI and SCADA screens. The technicians continued working out why they cannot get the 4-20mA analog signal for the position of the new valve. After several tries at troubleshooting, the technicians could make the connections with all of the signals from the valve rotor to the PLC, and from the PLC to the HMI, and from the HMI to the SCADA. They could verify that the signals for the open limit switch, closed limit switch, remote position, opening position, closing position, torque trip, open request and closed request, were communicating from the PLC, HMI and SCADA. The position feed-back from 0-100% was also verified, but further adjustment is necessary for the readings to be more accurate

Mid-Pacific Regional Office

(This Page Intentionally Left Blank)

Contract No. R16PC00091
Specification No. 20-C0843
North Fork Screens and Ladder Completion Contract - Battle Creek Salmon and Steelhead Restoration Project, California
TNT Industrial Contractors, Inc., Sacramento, CA

Work Performed	January	14.0%
	Time Elapsed	86.0%
	Work Completed	91.5%

Contractor Earnings	January	\$962,080.63
	Previous	\$4,260,023.10
	Total to Date	\$5,222,103.73

Area Office Project Management

Project Manager: Mary Marshall, MP-203

Office Engineering

Contract Administrator: Casandra Arthur, MPCO-111

One invoice was received during this reporting period; Invoice No. 009, received January 12, 2018, in the amount of \$962,080.63 for work performed from October 29, 2017 and November 28, 2017.

One modification was executed during this reporting period; Unilateral Modification 008 in the amount of \$191,500.00.

Field Engineering

Field Engineer: Brian Wagner, MPCO-300

Construction Representative: Jason Foust, MPCO-325

Number of Contractor Employees: 13

Work Performed

The following work took place at the North Battle Creek Feeder Diversion Dam (NBCFDD) site. Subcontractor Syblon Reid (SRCO) continued work under unilateral modification 006 making flashboard guide modifications at the fish ladder. Subcontractor San Joaquin Electric (SJE) troubleshooted the brush cleaning system for the fish screens.

Work at the Eagle Canyon Diversion Dam (ECDD) site included completing modifications to the trashrack platform through installation of metal beams and removable guardrail, installation of the davit arm and installation of a new barrier to protect the brush cleaning system motor as part of unilateral modification 006 work. Subcontractor Hamilton Pacific completed repairs to a concrete crack on the wall of the fish ladder and fish screen structure.



**North Fork Screens and Ladders Completion Contract
Installation of the ECDD removable guardrail**



**North Fork Screens and Ladders Completion Contract
Modifications to the flash board guides at NBCFDD**

(This Page Intentionally Left Blank)

Contracts in Warranty Status

(This Page Intentionally Left Blank)

R11PC20185 No. 20-C0778 Tracy 13.8kV Switchgear/Breaker Replacement – Tracy Pumping Plant and Substation - Delta Division, Central Valley Project, California

There was no Office Engineering Administrative activity this period. The warranty work for the B15 DFR will extend the 1-year warranty from June 29, 2017 through June 28, 2018.

R13PC20159 No. 20-C0819 Lake Berryessa Concessions Areas Improvements – Lake Berryessa, Solano Project, California

There was no Office Engineering Administrative activity this period. The 1-year warranty period began on March 31, 2017 and will end March 30, 2018.

R16PC00079 No. 20-C0851 Red Bluff Flap Gate Retrofit - Sacramento Canals Unit, Sacramento River Division, Central Valley Project, California

There was no Office Engineering Administrative activity this period. The 1-year warranty period began March 16, 2017 and will end March 15, 2018.

R17PC00022 No. 20-C0857 Western Tracy Switchyard - Chain Link Fence Project Tracy Pumping Plant and Substation - Delta Division, Central Valley Project, California

There was no Office Engineering Administrative activity this period. The 1-year warranty period began May 11, 2017 and will end May 10, 2018.

R16PC00099 None Folsom Dam Resource Building Replacement - Folsom Unit, American River Division, Central Valley Project, California

There was no Office Engineering Administrative activity this period. The 1-year warranty period began February 14, 2017 and will end February 13, 2018.

R16PC00100 None Lake Woollomes Recreation Area Asphalt Replacement - Central Valley Project, California

There was no Office Engineering Administrative activity this period. The 1-year warranty period began April 26, 2017 and will end April 25, 2018.

R15PC00080 20-C0836 Klamath Basin Area Office Sewer Lift Station, Klamath Basin Area Office, Klamath Falls, Oregon

Office Engineering is reviewing required submittals. The 1-year warranty period began January 20, 2017 and will end January 19, 2018.

R16PC00111 20-C0855 San Joaquin Hatchery Water Supply Pipeline - Friant Division, Central Valley Project, California

There was no Office Engineering Administrative activity this period. The 1-year warranty period began June 29, 2017 and will end June 28, 2018.

R17PC00067 None Lahontan Dam Rated Vehicle Barrier System – Lahontan Basin Area Office, Newlands Project, Nevada, Sparks Nevada

There was no Office Engineering Administrative activity this period. The 1-year warranty period began November 2nd, 2017 and will end November 1st, 2018.

R16PC00075 20-C0838 Folsom UHA Switchgear Replacement – Folsom Unit, American River Division, Central Valley Project, Redding, CA

There was no office Engineering Administrative activity this period. The 1 year warranty period began November 18th, 2017 and will end November 17th, 2018.

R17PC00100 Folsom Dam Auxiliary Spillway American River Phase V – Right Bank Stabilization, Folsom Unit, American River Division, Central Valley Project, California

Office Engineering is completing as-builts. The 1-year warranty period began December 9, 2017 and will end December 8, 2018.

R15PC00089 20-C0831 Intake 3 Screen Extension, Coleman National Fish Hatchery, Shasta Division, Central Valley Project, California

Office Engineering is reviewing final submittals and completing as-builts. The 1-year warranty period began December 13, 2017 and will end December 12, 2018.

Lab Reports

(This Page Intentionally Left Blank)

Stampede Safety of Dams Project

There was no laboratory information provided from the Materials Lab for this project during this period.

(This Page Intentionally Left Blank)

North Fork Screens and Ladders Completion Contract

There was no laboratory information provided from the Materials Lab for this project during this period.

(This Page Intentionally Left Blank)