

RECLAMATION

Managing Water in the West

MID-PACIFIC CONSTRUCTION OFFICE
Willows, California

Construction Progress Report L-29



U.S. Department of the Interior
Bureau of Reclamation
Mid-Pacific Region
Mid-Pacific Construction Office

August 2016

(This Page Left Blank Intentionally)

CONSTRUCTION PROGRESS REPORT (L-29)

MID-PACIFIC CONSTRUCTION OFFICE

MID-PACIFIC REGION

AUGUST 2016

TABLE OF CONTENTS

		PAGE
LOCATION MAP.....		i
STAFFING.....		ii
GLOSSARY OF TERMS.....		iii
CONTRACT/SPECS OR P.O. NO., CONTRACTOR, AND CONTRACT NAME	PAGE	MAP
	<u>NO.</u>	<u>NO.</u>
Central California Area Office.....	1	
R10PC20019.....20-C0689.....Andritz Hydro Corp.....	3	1
Folsom Power Plant Generators U1, U2, and U3 Rewind and Excitation System Replacement – Folsom Unit, American River Division, Central Valley Project, California		
R14PC00096.....20-C0816.....Alltech Engineering Corp.....	4	1
Nimbus Dam Radial Gate Repairs Phase III - Nimbus Dam, American River Division, Central Valley Project, California		
R13PC20159.....20-C0819.....GD Nielson Construction, Inc.....	7	2
Lake Berryessa Concessions Area Improvements – Lake Berryessa, Solano Project, California		
R16PC00075.....20-C0838.....Cal Electro, Inc.....	8	1
Folsom UHA Switchgear Replacement – Folsom Unit, American River Division, Central Valley Project, California		
R15PC00132.....20-C0845.....Woodward Drilling Company.....	9	2
Lake Berryessa Putah Canyon Drinking Water Well - Lake Berryessa, Solano Project, California		
R16PC00113.....20-C0858.....Sapper West, Inc.....	10	1
Folsom Dam Municipal and Industrial Temperature Control Device Safety Measures, Folsom Unit, American River Division, Central Valley Project, California		
GS-07F-0611F...None.....Design Space Modular.....	11	1
Modular Office Building - Folsom Dam Resources Building Replacement, Folsom Unit, American River Division, Central Valley Project, California		
R16PC00099.....None.....Chigosi Company.....	12	1
Folsom Resource Building – Folsom Unit, American River Division, Central Valley Project, California		
Klamath Basin Area Office.....	13	
R15PC00080.....20-C0836.....Andrews Contracting Services, LLC.....	15	3
Klamath Basin Area Office Sewer Lift Station, Klamath Basin Area Office, Klamath Falls, Oregon		

(This Page Left Blank Intentionally)

R16PC00076.....None.....T and S, DVBE, Inc.,.....	19.....	4
Tule Lake Road Improvement Project, Tule Lake National Wildlife Refuge, Tule Lake – Klamath Project, Oregon-California		
Lahontan Basin Area Office.....	23	
R16PC00062.....20-C0850.....NW Construction, Inc.,.....	25.....	5
Stampede Dam, Dam Safety Modifications - Stampede Division, Washoe Project, Nevada-California		
Northern California Area Office.....	27	
R15PC00150.....20-C0824.....BCI Construction USA, Inc.,.....	29.....	6
Trinity Dam Intake Mechanical Equipment Refurbishment/Gate Shaft Refurbishing, Phase I - Trinity River Division, Central Valley Project, California		
R15PC00041.....20-C0827.....Gardner Zemke Company.....	30.....	7
Keswick Powerplant Main Bus Replacement - Shasta Division, Central Valley Project, California		
R15PC00089.....20-C0831.....Contractor Services Group, Inc.,.....	31.....	8
Intake 3 Screen Extension, Coleman National Fish Hatchery - Shasta Division, Central Valley Project, California		
R16PC00006.....20-C0841.....Voith Hydro, Inc.,.....	34.....	6
Trinity Powerplant Generator Rewinds - Trinity River Division, Central Valley Project, Trinity River Division, California		
R16PC00079.....20-C0851.....E.C. Smith, Inc.,.....	35.....	9
Red Bluff Flap Gate Retrofit - Sacramento Canals Unit, Sacramento River Division, Central Valley Project, California		
R10PC20025.....None.....Tehama Environmental Solutions, Inc.,.....	36.....	8
Coleman Fish Hatchery Water Intakes Vegetation Replacement and Monitoring – Shasta Division, Central Valley Project, California		
R11PC2023S.....None.....Tehama Environmental Solutions, Inc.,.....	37.....	9
Red Bluff Diversion Dam, Fish Passage Improvement Project Terrestrial Mitigation - Sacramento Division, Central Valley Project, California		
South-Central California Area Office.....	39	
R16PC00110.....20-C0853.....BCI Construction USA, Inc.,.....	41.....	10
Madera Canal Headworks Low-Flow Valve – Friant Division, Central Valley Project, California		
R16PC00100.....None.....Construction Solutions Group, LLC.....	42.....	11
Lake Woollomes Recreation Area Asphalt Replacement - Central Valley Project, California		
San Joaquin River Restoration Program.....	43	
R16PC00061.....20-C0849.....Arrow S Company, Inc.,.....	45.....	10
Eastside Bypass Low Flow Conveyance - San Joaquin River Restoration Program, Friant Division, Central Valley Project, California		

(This Page Left Blank Intentionally)

R16PC00111.....20-C0855.....BCI Construction USA, Inc.....	47.....	10
San Joaquin Hatchery Water Supply Pipeline – San Joaquin River Restoration Program, Friant Division, Central Valley Project, California		

Mid-Pacific Regional Office.....49

R16PC00091.....20-C0843.....TNT Industrial Contractors, Inc.....	51.....	8
North Fork Screens and Ladders Completion Contract - Battle Creek Salmon and Steelhead Restoration Project, California		

Contracts in Warranty Status.....53

R09PC20R03.....20-C0677.....	55
Transformer K1A and K2A Replacements - Folsom Power Plant, Folsom Unit, American River Division, Central Valley Project, California	

R10PC20767.....20-C0703.....	55
Folsom Power Plant U1, U2, and U3 Replacement Runners – Folsom Unit, American River Division, Central Valley Project, California	

R14PC20096.....20-C0816.....	55
P&H Building Temporary Retrofit, Tracy Pumping Plant and Substation, Delta Division, Tracy Fish Collecting Facility, Byron, California	

R15PC00337.....20-C0842.....	55
Marble Bluff Dam Spillway Repair - Washoe Project, Nevada-California	

R13PC20088.....20-C0808.....	55
Prosser Creek Dam Refurbish High-Pressure Gate Seats and Regulating Gates – Stampede Division, Washoe Project, Nevada-California	

R15PC00090.....20-C0840.....	55
Nimbus Fish Hatchery 16-inch Pipeline Replacement – American River Division, Central Valley Project, California	

R15PC00064.....20-C0830.....	55
New Melones Lift Station Repairs – East Side Division, Central Valley Project, California	

R15PC00102.....20-C0839.....	55
Keswick Fish Trap Brail Replacement - Keswick Dam, Shasta Division, Central Valley Project, California	

R13PC20172.....20-C0817.....	55
JF Carr, Spring Creek, and Trinity Powerplant Pavement Rehabilitation - Trinity River Division, Central Valley Project, California	

R10PC20102.....20-C0755.....	56
Spring Creek Powerplant Generators G1 and G2 Rewind – Trinity River Division, Central Valley Project, California	

R13PC20092.....20-C0807.....	56
Mormon Island Auxiliary Dam Overlay, Safety of Dams Modification - Folsom Unit, American River Division, Central Valley Project, California	

(This Page Left Blank Intentionally)

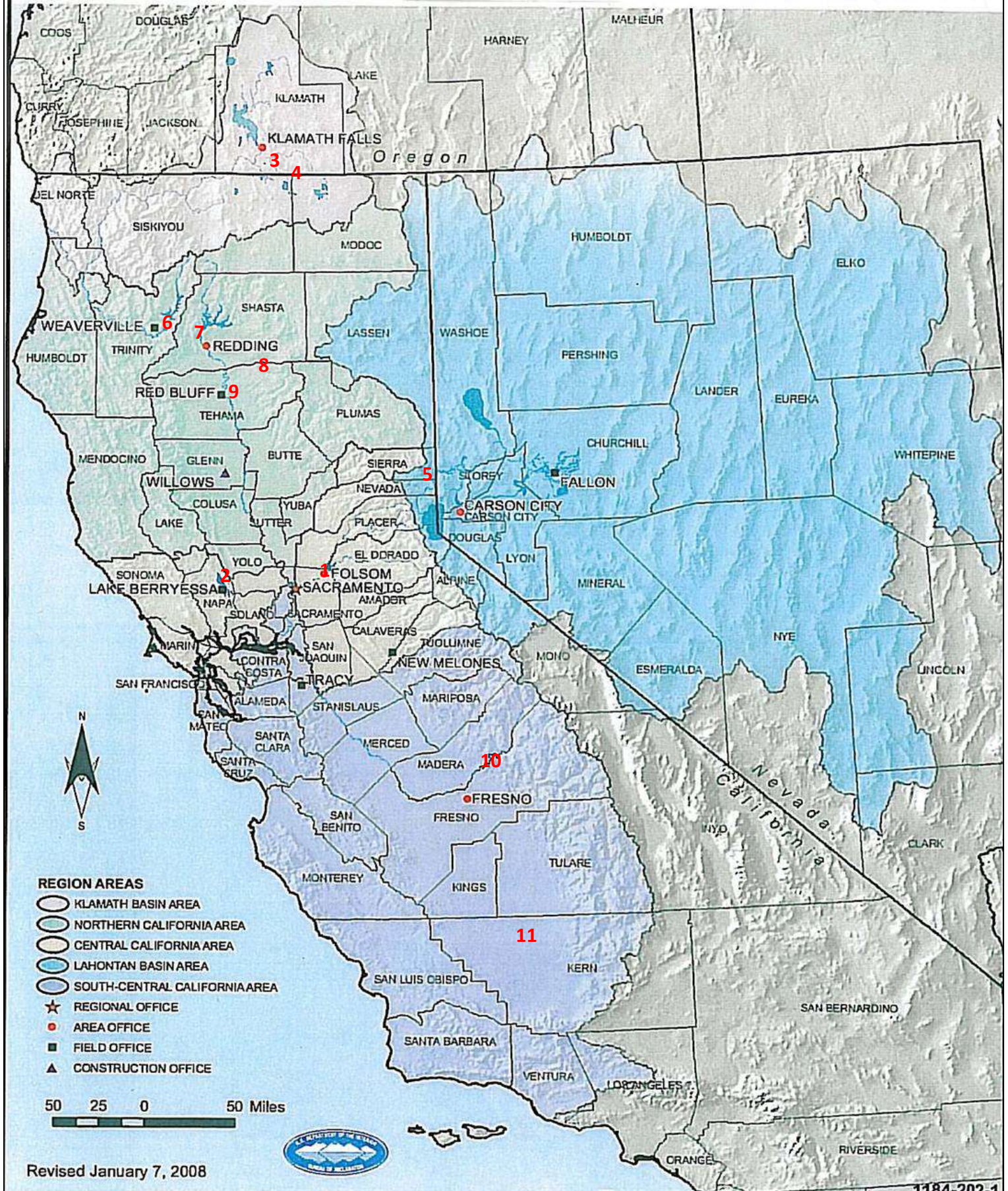
R14PC00125.....None.....	56
Folsom Temporary Pump Station – Folsom Unit, American River Division, Central Valley Project, California	
R13PC20508.....20-C0788.....	56
San Luis Demonstration Treatment Plant – San Luis Unit, West Stanislaus Division, Central Valley Project, California	
R15PC00050.....20-C0829.....	56
Safety and Facility Access Improvements, Hydropower Facility Modifications - Battle Creek Salmon, and Steelhead Restoration Project, California	
R11PC20185.....20-C0778.....	56
Tracy 13.8kV Switchgear/Breaker Replacement – Tracy Pumping Plant and Substation, Delta Division, Central Valley Project, California	

(This Page Left Blank Intentionally)

Areas in the Mid-Pacific Region Where Work was Performed

Mid-Pacific Region

RECLAMATION
Managing Water in the West



(This Page Left Blank Intentionally)

STAFFING

MID-PACIFIC CONSTRUCTION OFFICE

The Mid-Pacific Construction Office had 39 construction and administrative employees at the close of this month as follows:

Construction Engineer's Office.....	2
Preaward and Project Management Group.....	3
Administrative Management.....	7
Division of Field Engineering.....	18
Division of Office Engineering.....	5
Materials Lab Branch.....	4

(This Page Left Blank Intentionally)

GLOSSARY OF ACRONYMS AND ABBREVIATIONS

ACRONYM	MEANING
CCAO	Central California Area Office
CVP	Central Valley Project
KBAO	Klamath Basin Area Office
LBAO	Lahontan Basin Area Office
MP	Mid-Pacific Regional Office
MPCO	Mid-Pacific Construction Office
NCAO	Northern California Area Office
SCCAO	South Central California Area Office
SJJRP	San Joaquin River Restoration Program
TO	Tracy Office

(This Page Left Blank Intentionally)

Central California Area Office

(This Page Left Blank Intentionally)

Contract No. R10PC20019
Specification No. 20-C0689
Folsom Power Plant Generators U1, U2, and U3 Rewind and
Excitation System Replacement - Folsom Unit, American River
Division, Central Valley Project, California
Andritz Hydro Corp., Charlotte, NC

Work Performed	August	0.0%
	Time Elapsed	100.0%
	Work Completed	99.3%
Contractor Earnings	August	\$0.00
	Previous	\$20,549,613.17
	Total to Date	\$20,549,613.17

Area Office Project Management

Project Manager: Jesse Castro, CC-607

Office Engineering

Contract Manager: Larry Bowman, MPCO-240

No invoice was received this reporting period.

Field Engineering

Construction Manager: Reynaldo Garcia, MPCO-310

Construction Representative: Todd Dooley, MPCO-314.

Number of Contractor Employees: 0

Work Performed

No work performed on site this reporting period.

Contract No. R14PC00096
Specification No. 20-C0816
Nimbus Dam Radial Gate Repairs, Phase III – Nimbus Dam,
American River Division, Central Valley Project, California
Alltech Engineering Corp, Mendota Heights, MN

Work Performed	August	4.6%
	Time Elapsed	61.3%
	Work Completed	62.9%

Contractor Earnings	August	\$476,142.76
	Previous	\$6,095,550.36
	Total to Date	\$6,571,693.12

Area Office Project Management

Project Manager: Jeffery Croshal, CC-611

Office Engineering

Contract Manager: Larry Bowman, MPCO-240

Invoice No. 14, was received in the amount of \$476,142.76 on August 5, 2016 for work performed from July 1, 2016 to July 31, 2016.

Field Engineering

Construction Manager: Reynaldo Garcia, MPCO-310

Construction Representative: Todd Dooley, MPCO-314

Number of Contractor Employees: 9

Work Performed

Gate 11

Sandblasting

Abrasive blasting work was performed on the gate 11. Spent grit samples were sent to an independent laboratory to verify that the spent material could be deemed non-hazardous. A near-white metal blast was achieved.

Remove and Dispose Blast Waste

Compressed air was used to blow spent grit and dust out of cracks and crevices, out from the planking and scaffolding hardware, and off of the gate skin surfaces. A trailer-mounted vacuum was used to remove and bag the spent grit and debris.

Weld Pit Repairs and Replace Deteriorated Gate Bolts

Weld pit repair work was performed on 196 divots, and 21 nuts and bolts were replaced. Each of the pits was weld filled. Hand grinders were then used to prepare the skin surface for the coating application.

Reblasting of Gate and Cleaning

A final abrasive blast was performed, followed by a blow-down, wipe-down, vacuuming, and cleaning on the upstream and downstream sides of the gate within the containment area.

Install Cable Wearing Pads

The expanded metal for the wear pads were tack-welded on the upstream face of the radial gate. Two-part epoxy wearing compound was applied to a thickness that covered the wearing pad and lath.

Coatings

FD Thomas performed the gate coating work. After the primer coat, the crew used a two-part epoxy filler to seal crevices, bolts, seams, and skip welds where the epoxy coating had not bridged the gaps.

Stripe coating was applied to all edges, seams, bolts, nuts, rivets, and welds on the gate structure, followed by the application of a second (or intermediate) coat of the epoxy over the entire gate structure.

A total of three coats of the epoxy paint were applied to the upstream face of the gate, the new seal clamp bars, and the gate guide shoes. Two coats were applied to the downstream side of the gate structure. Then a UV Resistant Polyurethane top coat was applied to the downstream gate components. Dry film testing (DFT) and coating remediation confirmed that all areas met the required coating mil thickness. The inspector noted that the coating work displayed overall uniformity in the finish.

Discontinuity (holiday) testing was performed on the upstream face of the gate. The test verified that there were no detectable holidays to be found on the upstream face of the gate.

Removal of Containment

The containment materials were cut, removed, and bagged for off-haul. The lath nails were pulled from the edges of the concrete piers and the nail holes were sealed with the approved caulking. As scaffolding was being removed, workers used vacuums to remove the grit and debris that fell onto the framework of the newly coated gate structure.

Install Gate Seals

Using the stainless steel bolts and nuts, workers hung the seal; and with just a few bolts, temporarily held the seal in place with the new clamp bars.

Removal of Scaffolding

All scaffolding components were disassembled and removed. Storage racks were loaded with materials and a crane was used to remove the material off of the spillway and stage it on the bridge deck for removal. From the bridge deck, a forklift was utilized to move each of these racks loaded with materials to the south side of the dam.

The crew was able to remove approximately 50 to 60 percent of the scaffolding structure by the last day of the month.

Contract No. R13PC20159
Specification No. 20-C0819
Lake Berryessa Concessions Area Improvements – Lake
Berryessa, Solano Project, California
G.D. Nielson Construction, Inc., Napa, CA

Work Performed	August	0.3%
	Time Elapsed	100%
	Work Completed	63.9%

Contractor Earnings	August	\$3,588.48
	Previous	\$663,018.34
	Total to Date	\$666,606.82

Area Office Project Management

Project Manager: Peter Funkhouser, CC-440

Office Engineering

Contract Manager: Larry Bowman, MPCO-240

The Partial Suspension-of-Work issued on June 25, 2014 and July 23, 2014 was cancelled this reporting period.

Invoice No. 6, in the amount of \$3,588.48, for the period of May 1 to May 15, 2015, was received this reporting period.

Field Engineering

Construction Manager: Reynaldo Garcia, MPCO-310

Construction Representative: Bill Linder, MPCO-312

Number of Contractor Employees: 0

Work Performed

No onsite work was performed during this period.

Contract No. R16PC00075
Specification No. 20-C0838
Folsom UHA Switchgear Replacement – American River Division,
Central Valley Project, California
Cal Elecrto, Inc., Redding, CA

Work Performed	August	0.0%
	Time Elapsed	0.0%
	Work Completed	0.0%
Contractor Earnings	August	\$0.00
	Previous	\$0.00
	Total to Date	\$0.00

Area Office Project Management

Project Manager: Vanhue Ly, CC-606B

Office Engineering

Contract Manager: Larry Bowman, MPCO-240

Field Engineering

Construction Engineer: Reynaldo Garcia, MPCO-310

Construction Representative: Sean Frische, MPCO-317

Number of Contractor Employees: 0

Work Performed

No onsite work was performed this reporting period.

Contract No. R15PC00132
Specification No. 20-C0845
Lake Berryessa Putah Canyon Drinking Water Well - Lake
Berryessa, Solano Project, California
Woodward Drilling Company, Rio Vista, CA

Work Performed	August	43.9%
	Time Elapsed	98.3%
	Work Completed	83.9%
Contractor Earnings	August	\$120,000.00
	Previous	\$109,176.74
	Total to Date	\$229,176.74

Area Office Project Management

Project Manager: Peter Funkhouser, CC-440

Office Engineering

Contract Manager: Larry Bowman, MPCO-240

Invoice No. 5, in the amount of \$120,000.00, for work performed from June 10 to July 28, 2016, was received this reporting period.

Field Engineering

Construction Manager: Reynaldo Garcia, MPCO-310

Construction Representative: Bill Linder, MPCO-312

Number of Contractor Employees: 0

Work Performed

The Contractor has completed drilling, testing, and installing a working well at Putah Canyon Campground. Pacific Gas & Electric (PG&E) needs to install an electric meter and connect power. A generator was used to test the pump and control panel.

Contract No. R16PC00113
Specification No. 20-C0858
Folsom Dam Municipal and Industrial Temperature Control
Device Safety Measures, American River Division, Central Valley
Project, California
Sapper West, Inc., Sacramento, CA

Work Performed	August	0.0%
	Time Elapsed	0.0%
	Work Completed	0.0%
Contractor Earnings	August	\$0.00
	Previous	\$0.00
	Total to Date	\$0.00

Area Office Project Management

Project Manager: Brian Zewe, CC-612

Office Engineering

Contract Manager: Kent Perkes, MPCO-225

The Post Award Conference was held on August 31, 2016

The Notice to Proceed was issued on August 31, 2016

Field Engineering

Construction Manager: Brian Wagner, MPCO-300

Construction Representative: Todd Dooley, MPCO-314

Number of Contractor Employees: 0

Work Activities:

No onsite work was performed during this period.

Contract No. R15PD00728
Order No. GS-07F-0611F
Modular Office Building - Folsom Dam Resources Building
Replacement, Folsom Unit, American River Division, Central
Valley Project, California
Design Space Modular Buildings, Dixon, CA

Work Performed	August	0.0%
	Time Elapsed	100%
	Work Completed	0.0%
Contractor Earnings	August	\$0.00
	Previous	\$0.00
	Total to Date	\$0.00

Area Office Project Management

Project Manager: Mark Lewis, CC-608

Office Engineering

Contract Manager: Larry Bowman, MPCO-240

Field Engineering

Construction Manager: Reynaldo Garcia, MPCO-310

Construction Representative: Benjamin Richburg, MPCO-318

Number of Contractor Employees: 4

Work Performed

Central California Area Office (CCAO) personnel have been moved into the modular office building and are now using the facilities. This month the Contractor placed the missing buffs to adjust the air flow of the Heating Ventilation and Air Conditioning (HVAC) system. There are a few unresolved punch list items that need to be addressed by the Contractor, such as the key cores for the door locks. The Contractor stated that he would have this punch list item addressed after contacting the manufacturer regarding this matter.

Contract No. R16PC00099
Specification No. None
Folsom Resource Building - American River Division, Central
Valley Project, California
Chigosi Company, San Diego, CA

Work Performed	August	0.0%
	Time Elapsed	0.0%
	Work Completed	0.0%
Contractor Earnings	August	\$0.00
	Previous	\$0.00
	Total to Date	\$0.00

Area Office Project Management

Project Manager: Mark Lewis, CC-641

Office Engineering

Contract Manager: Larry Bowman, MPCO-240

No invoice was received this reporting period.

Field Engineering

Construction Manager: Reynaldo Garcia, MPCO-310

Construction Representative: Sean Frische, MPCO-317

Number of Contractor Employees: 0

Work Activities:

No onsite work was performed this reporting period.

Klamath Basin Area Office

(This Page Left Blank Intentionally)

Contract No. R15PC00080
Specification No. 20-C0836
Klamath Basin Area Office Sewer Lift Station, Klamath Basin
Area Office, Oregon
Andrews Contracting Services, LLC, Vancouver, WA

Work Performed	August	0.0%
	Time Elapsed	100%
	Work Completed	23%

Contractor Earnings	August	\$0.00
	Previous	\$165,545.65
	Total to Date	\$165,545.65

Area Office Project Management

Project Manager: John Menniti, MPCO-110

Office Engineering

Contract Manager: Kent Perkes, MPCO-225

Received and reviewed Contractor's proposal for Modification 0004 - Klamath County Changes to remove bollards and articulated concrete revetment, and reposition a manhole in Klamath County Right of Way. Proposal received on August 24, 2016.

Field Engineering

Construction Manager: Brian Wagner, MPCO-300

Construction Representative: Russell Davies, MPCO-341

Number of Contractor Employees: 7

Work Performed

Casing Bore Operations

Bob's Excavating (earthwork subcontractor) and McBride Excavation (boring subcontractor) completed the casing bore at the intersection of Joe Wright Road and the Union Pacific Railroad. A total of 125 linear feet of 12" outside diameter steel casing pipe was installed and will act as structural crossing under other existing subsurface utilities. While the boring operations were in progress, perched groundwater in the excavation was controlled via electric and gasoline powered pumps.

Sewer Pipe Installation

Bob's Excavating personnel excavated the trench for the bonded sections of sewer pipe, placed the pipe, and shut down operations while the contractor awaited parts for the remainder of the project.



Klamath Basin Area Office Sewer Lift Station
The Contractor removing the drill equipment and loading the various pieces for removal from the site.



Klamath Basin Area Office Sewer Lift Station
Subcontractor Bob's Excavating used $\frac{3}{4}$ -inch aggregate to backfill the bore pit, following removal of the trench shoring. Density testing on the backfill indicated specified results were achieved.



Klamath Basin Area Office Sewer Lift Station

Subcontractor Bob's Excavating used a trench shield segment in the sewer trench in locations where personnel would be below OSHA depths. The shield was pulled along, as needed. The subcontractor used ¾-inch aggregate baserock exclusively to construct the pipe envelope and trench backfill.

Contract No. R16PC00076

Specification No. None

Tule Lake Road Improvement Project - Tule Lake National Wildlife Refuge - Klamath Project, Oregon-California

T and S, DVBE, Inc., Anderson, CA

Work Performed	August	96.1%
	Time Elapsed	23.8%
	Work Completed	96.1%

Contractor Earnings	August	\$1,783,311.52
	Previous	\$0.00
	Total to Date	\$1,783,311.52

Area Office Project Management

Project Manager: Mike Green, KO-400

Office Engineering

Contract Manager: Amber Pierce, MPCO-205

Invoice No. 01, was received this month for work that was performed during the months of June and July, in the amount of \$1,104,960.41. Invoice No. 02 was also received this month, in the amount of \$678,351.11, for work that was performed during the month of August.

Field Engineering

Field Engineer: Brian Wagner, MPCO-300 (COR)

Onsite Government Representatives: Russell Davies, MPCO-341

Construction Control Representative: Jeff Kelly, MPCO-322

Number of Contractor employees: 13

Work Performed

Road Improvements Priorities 3, 6-9, Per Mod 001

The contractor completed the placement of all material in the Sump 3 region. Roads completed include: Q-1 Rd., Q-3-B Rd., Pump W Rd., R Canal Rd., and Hovey Point Rd. All of the roads were completed consistently with the original contract and modifications provided by Reclamation. A total of 51,541.35 tons of material were delivered and placed during this period, consisting of 27,634.38 tons of 4-inch minus material; 5,044.86 tons of 1 ½-inch minus material; and 18,862.11 tons of ¾-inch minus gravel surfacing material. The material was provided by Knife River Construction and delivered to the site by T and S trucks, along with owner operated trucks.

Road Improvement Priority 2 Dust Palliative Application

The contractor completed the application of the dust palliative for the roads in Sump 2. The product used was Durablend provided by VSS Emultech. 15.2 miles of the roads were treated.

Modification 002 - Safety Improvements of Pump 10 Rd.

The contractor completed the work associated with Modification 002 to improve the safety of Pump 10 Rd. The road between Pole Line Rd and Red Rock Rd. was widened with the existing material. A berm was also created along the canal with the existing material. The road was then capped with 1,280.09 tons of ¾-inch minus gravel surfacing. All modification work is 100% complete.



**Tule Lake Road Improvement Project
A Picture Showing the Dust Palliative on Pole Line Road North of Hunt Shack
Road**



**Tule Lake Road Improvements Project
The Contractor Spreading the $\frac{3}{4}$ -inch minus material on Pump W Road.**

(This Page Left Blank Intentionally)

Lahontan Basin Area Office

(This Page Left Blank Intentionally)

Contract No. R16PC00062
Specification No. 20-C0850
Stampede Dam - Dam Safety Modifications, Stampede Dam,
Stampede Division, Washoe Project, Nevada-California
NW Constructors, Inc., Bozeman, MT

Work Performed	August	0.8%
	Time Elapsed	9.0%
	Work Completed	1.7%
Contractor Earnings	August	\$156,136.87
	Previous	\$204,510.00
	Total to Date	\$360,646.87

Area Office Project Management

Project Manager: Todd Hill, MP-240

Office Engineering

Contract Manager: Kent Perkes, MPCO-225

Invoice 2 was received August 10, 2016, in the amount of \$156,136.87, for work performed from June 8, 2016 to August 8, 2016.

Modification 0001: Restrictions and Limitations Requirements for the fisherman access parking area, was executed during this reporting period.

Field Engineering

Construction Manager: Kyle Hughes, MPCO-324

Construction Representative: Zahid Wazid, MPCO-349

Number of Contractor Employees: 13

Work Performed

Mobilization

NW Construction, started mobilizing field office trailers this month. The parking area and field office were established during this reporting period.

The material processing equipment was mobilized which included two CAT D6 and D8 dozers, a 3-deck screening plant, and a CAT 950k loader. Dog Valley Road Detour signs were installed.

Primary Borrow Area Processing

NW Construction, stripped vegetation and removed trees in the primary borrow area.

Water Pollution Control/SWPPP

NW Construction, installed silt fence around office area, primary borrow area, and saddle dike borrow area.



Stampede Dam – Dam Safety Modifications
A View of The Operational Borrowing Area after the vegetation and trees had been removed.

Northern California Area Office

(This Page Left Blank Intentionally)

Contract No. R15PC00150
Specification No. 20-C0824
Trinity Dam Intake Mechanical Equipment Refurbishment/Gate
Shaft Refurbishing, Phase I - Trinity River Division, Central Valley
Project, California
BCI Construction USA, Inc., Belleville, IL

Work Performed	August	16.9%
	Time Elapsed	95.3%
	Work Completed	79.8%
Contractor Earnings	August	\$425,444.00
	Previous	\$1,584,711.20
	Total to Date	\$2,010,155.20

Area Office Project Management

Project Manager: Robert Gee, NCAO-230

Office Engineering

Contract Manager: Kevin Jacobs, MPCO-214

Invoice No. 7, in the amount of \$425,444.00, was received this reporting period for work performed during the month of July 2016.

Field Engineering

Construction Manager: Brian Wagner, MPCO-300

Construction Representative: Jason Foust, MPCO-325

Number of Contractor Employees: 5

Work Performed

The contractor continued to grout cracks found in the cement.
The contractor installed the electro-osmotic pulse system.

Contract No. R15PC00041
Specification No. 20-C0827
Keswick Powerplant Main Bus Replacement - Shasta Division,
Central Valley Project, California
Gardner Zemke Company, Albuquerque, NM

Work Performed	August	0.5%
	Time Elapsed	100%
	Work Completed	98.8%

Contractor Earnings	August	\$11,069.01
	Previous	\$2,076,505.99
	Total to Date	\$2,087,575.00

Area Office Project Management

Project Manager: Jeff Gifford, NC-620

Office Engineering

Contract Manager: Kevin Jacobs, MPCO-214

Invoice No. 8, in the amount of \$11,069.01, was received during this reporting period for work performed during the month of July 2016.

Field Engineering

Construction Manager: Brian Wagner, MPCO-300

Construction Representative: Stephen Holmes, MPCO-320

Number of Contractor Employees: 5

Work Performed

No onsite work was performed during this period.

Contract No. R15PC00089
Specification No. 20-C0831
Intake 3 Screen Extension, Coleman National Fish Hatchery,
Shasta Division, Central Valley Project, California
Contractor Services Group, Inc., West Sacramento, CA

Work Performed	August	54.1%
	Time Elapsed	67.9%
	Work Completed	69.7%

Contractor Earnings	August	\$993,956.80
	Previous	\$287,055.00
	Total to Date	\$1,281,011.80

Area Office Project Management

Project Manager: Hank Harrington, NC-210

Office Engineering

Contract Manager: Kent Perkes, MPCO-225

Invoice No. 3, in the amount of \$993,956.80, was received during this reporting period for work performed from July 1, 2016 to August 19, 2016.

Field Engineering

Construction Manager: Brian Wagner, MPCO-300

Construction Representative: Fernando Pavone, MPCO-333

Number of Contractor Employees: 19

Work Performed

Spray Water Pumps electrical installation

Electrical subcontractor Bullert installed the electrical junction boxes for the spray water solenoid on each of the bays. The electrician also hooked up the power for the temporary pump. Subcontractor Munson pumps delivered the temporary sump pump (4") for the spray water system. Contractor Services Group (CSG) cleaned the stainless steel piping to remove the rusty areas using Stellar Solution 77 Plus (rust removal, passivation and cleaning for stainless steel).

Fish Screens Removal/Installation

Subcontractor Dura Crane assisted CSG with the removal of the old fish screens. They removed all four screens, one from each bay.

Fish Screens Installation

Subcontractor Cambridge Engineering Solutions delivered the four new fish screens to the site. It was found that the top sections of the fish screens were assembled wrong. CSG crew, with the assistance of Cambridge engineering, disassembled and reassembled all four fish screens correctly.

Subcontractor Dura Crane assisted CSG with the installation of the new fish screens, the crew temporarily installed fish screens in bays 1, 2 and 3. The remaining fish screen in bay 4 was not fitting correctly. CSG is looking for solutions on how to install the fish screen correctly. The installed screens on bays 1, 2, and 3 have minor corrections that need to be performed.

Subcontractor Big Valley Diving crew installed the bottom seal on each of the bays 1, 2, and 3 and verified the gap opening on the bottom and side seals. The screens on bays 1, 2, and 3 complied with the contractual requirements of the gap not exceeding the 1.75 mm opening.

Blocking Plates

Subcontractor Safway Industrial Service and Holdrege and Kull assisted CSG with the access to the sluice way to install the blocking plates. They will provide design information for the scaffolding system.

Metal Platform

CSG crew members removed the existing metal platform from bay 1 and installed supper sacks in front of the intake trash rack to build a walking platform to access the sluice way. CSG installed the metal supports and gratings for the lower platform.



**Intake 3 Screen Extension Coleman National Fish Hatchery
Subcontractor Dura Crane assisting Contractor Services Group with the installation of
the fish screens.**

Contract No. R16PC00006
Specification No. 20-C0841
Trinity Powerplant Generator Rewinds - Central Valley Project,
Trinity River Division, California
Voith Hydro, Inc., York, PA

Work Performed	August	0.0%
	Time Elapsed	27.5%
	Work Completed	0.0%
Contractor Earnings	August	\$0.00
	Previous	\$0.00
	Total to Date	\$0.00

Area Office Project Management

Project Manager: John Menniti, MPCO-110

Office Engineering

Contract Manager: Kevin Jacobs, MPCO-214

Field Engineering

Construction Manager: Brian Wagner, MPCO-300

Construction Representative: Stephen Holmes, MPCO-320

Number of Contractor Employees: 0

Work Performed

No onsite work was performed during this reporting period.

Contract No. R16PC00079
Specification No. 20-C0851
Red Bluff Flap Gate Retrofit - Sacramento Canals Unit,
Sacramento River Division, Central Valley Project, California
E.C. Smith, Inc., Anderson, CA

Work Performed	August	0.0%
	Time Elapsed	17.2%
	Work Completed	0.0%
Contractor Earnings	August	\$0.00
	Previous	\$0.00
	Total to Date	\$0.00

Area Office Project Management

Project Manager: John Menniti, MPCO-110

Office Engineering

Contract Manager: Kevin Jacobs, MPCO-214

Field Engineering

Construction Manager: Brian Wagner, MPCO-300

Construction Representative: Stephen Holmes, MPCO-320.

Number of Contractor Employees: 0

Work Performed

No work performed on site this reporting period.

Contract No. R10PC20025

Specification No. None

**Coleman Fish Hatchery Water Intakes Vegetation Replacement
and Monitoring - Shasta Division, Central Valley Project,
California**

Tehama Environmental Solutions, Inc., Red Bluff, CA

Work Performed	August	0.0%
	Time Elapsed	100%
	Work Completed	100%
Contractor Earnings	August	\$0.00
	Previous	\$861,541.61
	Total to Date	\$861,541.61

Area Office Project Management

Project Manager: Hank Harrington, NC-210

Office Engineering

Contract Manager: Kevin Jacobs, MPCO-214

Field Engineering

Construction Manager: Brian Wagner, MPCO-300

Construction Representative: Fernando Pavone, MPCO-333

Number of Contractor Employees: 0

Work performed

No onsite work was performed during this period. The contract was completed at the end of this reporting period. There is no warranty on this contract.

Contract No. R11PC2023S

Specification No. None

**Red Bluff Diversion Dam, Fish Passage Improvement Project,
Terrestrial Mitigation - Sacramento River Division, Central Valley
Project, California**

Tehama Environmental Solutions, Inc., Red Bluff, California

Work Performed	August	0.0%
	Time Elapsed	73.6%
	Work Completed	98.9%

Contractor Earnings	August	\$0.00
	Previous	\$4,806,130.13
	Total to Date	\$4,806,130.13

Area Office Project Management

Project Manager: Hank Harrington, NC-210

Office Engineering

Contract Manager: Kevin Jacobs, MPCO-214

Field Engineering

Construction Manager: Brian Wagner, MPCO-300

Construction Representative: Fernando Pavone, MPCO-333

Number of Contractor Employees: 0

Work performed

The Contractor's current activity consists of maintaining and monitoring vegetation it planted in 2011.

(This Page Left Blank Intentionally)

South Central California Area Office

(This Page Left Blank Intentionally)

Contract No. R16PC00110
Specification No. 20-C0853
Madera Canal Headworks Low-Flow Valve – Friant Division,
Central Valley Project, California
BCI Construction USA, Inc., Pace, FL

Work Performed	August	0.0%
	Time Elapsed	0.0%
	Work Completed	0.0%
Contractor Earnings	August	\$0.00
	Previous	\$0.00
	Total to Date	\$0.00

Area Office Project Management

Project Manager: Adam Nickels, MP-153

Office Engineering

Contract Manager: Larry Bowman, MPCO-240

This contract was awarded on August 9, 2016 in the amount of \$1,789,629.45.

No invoice was received this reporting period.

Field Engineering

Construction Engineer: Brian Wagner, MPCO-300

Construction Representative: Daniel Pavone, MPCO-333

Number of Contractor Employees: 0

Work Activities:

No onsite work was performed this reporting period.

Contract No. R16PC00100

Specification No. None

Lake Woollomes Recreation Area Asphalt Replacement - Central Valley Project, California

Construction Solutions Group, LLC, St. Louis, MO

Work Performed	August	0.0%
	Time Elapsed	0.0%
	Work Completed	0.0%
Contractor Earnings	August	\$0.00
	Previous	\$0.00
	Total to Date	\$0.00

Area Office Project Management

Project Manager: Todd Hill, MP-240

Office Engineering

Contract Manager: Kent Perkes, MPCO-225

The Post Award Conference for this contract was held on August 4, 2016

The Notice to Proceed was issued on August 4, 2016

Received, reviewed, and approved Request for Substitution No. 1 for aggregate size.

Field Engineering

Construction Manager: Brian Wagner, MPCO-300

Construction Representative: Sean Hill, MPCO-328

Number of Contractor Employees: 0

Work Performed

No onsite work was performed during this period.

San Joaquin River Restoration Program

(This Page Left Blank Intentionally)

Contract No. R16PC00061
Specification No. 20-C0849
Eastside Bypass Low Flow Conveyance - San Joaquin River
Restoration Program - Friant Division, Central Valley Project,
California
Arrow S Company Inc., Arbuckle, CA

Work Performed	August	96.0%
	Time Elapsed	46.7%
	Work Completed	96.0%
Contractor Earnings	August	\$827,914.97
	Previous	\$0.00
	Total to Date	\$827,914.97

Area Office Project Management

Project Manager: Tyler Nunes, MP-170

Office Engineering

Contract Manager: Larry Bowman, MPCO-240

Invoice No. 1, in the amount of \$827,914.97, was received this reporting period for work performed from May 24, 2016 to August 11, 2016.

Field Engineering

Construction Engineer: Brian Wagner, MPCO-300

Construction Representative: Sean Hill, MPCO-328

Number of Contractor Employees: 9

Work Performed

Channel Excavation:

The Conveyance Channel is being excavated at approximately 300 linear feet a day.

Disposal of Excavated Material:

The excavated material was hauled to a nearby location and stockpiled.

Channel Excavation and Disposal Completion:

The Eastside Bypass Low Flow Conveyance Channel excavation and disposal were completed August 10, 2016. The Bypass Channel is 2,570 linear feet long and 135 feet wide across the bottom.

Post Construction Survey:

On August 12, 2016 Nordahl Land Surveyors, Inc. performed a final survey of the excavated channel to determine the exact quantity of material removed from the conveyance channel.

Property Line Cattle Fencing Installation:

Once the Bypass Channel and final survey were completed, two property line cattle fences were installed across the width of the channel on the north and south sides of El Nido Road. On the northern property, line a dormant electrical cattle fence was reinstalled.

Demobilization of Equipment:

The equipment utilized for this project were a Motor Grader, a Bulldozer w/slope boards, an Excavator, four Haul Trucks, one Maintenance/Fuel Truck and one Water Truck. The final piece of equipment was removed from the project site on August 15, 2016.

Contract No. R16PC00111
Specification No. 20-C0855
San Joaquin Hatchery Water Supply Pipeline – San Joaquin River
Restoration Program, Friant Division, Central Valley Project,
California
BCI Construction USA, Inc., Pace, FL

Work Performed	August	0.0%
	Time Elapsed	0.0%
	Work Completed	0.0%
Contractor Earnings	August	\$0.00
	Previous	\$0.00
	Total to Date	\$0.00

Area Office Project Management

Project Manager: Adam Nickels, MP-170

Office Engineering

Contract Manager: Kent Perkes, MPCO-225

The Post Award Conference was held on August 23, 2016

The Notice to Proceed was issued on August 24, 2016

Field Engineering

Construction Manager: Brian Wagner, MPCO-300

Construction Representative: Fernando Pavone, MPCO-333

Number of Contractor Employees: 0

Work Performed

No onsite work was performed during this period.

(This Page Left Blank Intentionally)

Mid-Pacific Regional Office

(This Page Left Blank Intentionally)

Contract No. R16PC00091
Specification No. 20-C0843
North Fork Screens and Ladder Completion Contract - Battle Creek Salmon and Steelhead Restoration Project, California
TNT Industrial Contractors, Inc., Sacramento, CA

Work Performed	August	0.0%
	Time Elapsed	2.4%
	Work Completed	0.0%
Contractor Earnings	August	\$0.00
	Previous	\$0.00
	Total to Date	\$0.00

Area Office Project Management

Project Manager: Mary Marshall, MP-203

Office Engineering

Contract Manager: Kevin Jacobs, MPCO-214

Field Engineering

Construction Manager: Brian Wagner, MPCO-300

Construction Representative: Jason Foust, MPCO-325

Number of Contractor Employees: 0

Work Performed

No onsite work was performed during this reporting period.

(This Page Left Blank Intentionally)

Contracts in Warranty Status

(This Page Left Blank Intentionally)

R09PC20R03 20-C0677 Transformer K1A and K2A Replacements, Folsom Power Plant:

There was no Office Engineering Administrative activity this period. The 5-year warranty for K2A extends to January 4, 2017.

R10PC20767 20-C0703 Folsom Power Plant U1, U2, and U3 Replacement Runners:

There was no Office Engineering Administrative activity during this period. The 2-year warranty period began January 28, 2015, and will end January 27, 2017

R15PC00337 20-C0842 Marble Bluff Dam Spillway Repair, Washoe Project, Nevada:

There was no Office Engineering Administrative activity during this period. The 1-year warranty period began October 1, 2015, and will end September 30, 2016.

R13PC20088 20-C0808 Prosser Creek Dam Refurbish High-Pressure Gate Seats and Regulating Gates, Stampede Division, Washoe Project, Nevada-California:

There was no Office Engineering Administrative activity during this period. The 1-year warranty period began November 7, 2015, and will end November 6, 2016.

R15PC00090 20-C0840 Nimbus Fish Hatchery 16-inch Pipeline Replacement, Central Valley Project, California:

There was no Office Engineering Administrative activity during this period. The 1-year warranty period began October 22, 2015, and will end on October 21, 2016.

R15PC00064 20-C0830 New Melones Lift Station Repairs – East Side Division, Central Valley Project, California:

There was no Office Engineering Administrative activity during this period. The 1-year warranty period began October 23, 2015, and will end on October 22, 2016

R15PC00102 No. 20-C0839 Keswick Fish Trap Brail Replacement, Keswick Dam, California:

Final as-built drawings were reviewed by Office Engineering during this period. The 1-year warranty period began December 22, 2015 and will end December 21, 2016.

R13PC20172 No. 20-C0817 JF Carr, Spring Creek, and Trinity Powerplant Pavement Rehabilitation - Trinity River Division, Central Valley Project, California:

There was no Office Engineering Administrative activity during this period. The 1-year warranty period began October 22, 2015 and will end October 21, 2016.

R10PC2010 No. 20-C0755 Spring Creek Powerplant Generators G1 and G2 Rewind – Trinity River Division, Central Valley Project, California:

There was no Office Engineering Administrative activity during this period. The 3-year warranty period began October 1, 2015 and will end September 30, 2018.

R13PC20092 No. 20-C0807 Mormon Island Auxiliary Dam Overlay, Safety of Dams Modification - Folsom Unit, American River Division, Central Valley Project, California:

There was no Office Engineering Administrative activity during this period. The 1-year warranty period began October 28, 2015 and will end October 27, 2016.

R14PC00125 None Folsom Temporary Pump Station – Folsom Unit, American River Division, Central Valley Project, California:

There was no Office Engineering Administrative activity during this period. The 1-year warranty period began October 2, 2015, and will end October 1, 2016

R13PC20508 20-C0788 San Luis Demonstration Treatment Plant – San Luis Unit, West San Joaquin Division, Central Valley Project, California:

Invoice 32, in the amount of \$177,524.56, was received for work performed through June 30, 2016. The 1-year warranty period began June 30, 2016 and will end June 29, 2017.

R15PC00050 20-C0829 Safety and Facility Access Improvements – Hydropower Facility Modifications - Battle Creek Salmon and Steelhead Restoration Project, California:

There was no Office Engineering Administration activity during this period. The 1-year warranty period began January 26, 2016 and will end January 25, 2017.

R11PC20185 No. 20-C0778 Tracy 13.8kV Switchgear/Breaker Replacement – Tracy Pumping Plant and Substation - Delta Division, Central Valley Project, California: Technical analyses of Contractor requests for change were prepared during this reporting period. The 1-year warranty period began June 22, 2016 and will end June 21, 2017.