

RECLAMATION

Managing Water in the West

MID-PACIFIC CONSTRUCTION OFFICE
Willows, California

Construction Progress Report L-29



U.S. Department of the Interior
Bureau of Reclamation
Mid-Pacific Region

November 2015

(This Page Left Blank Intentionally)

CONSTRUCTION PROGRESS REPORT (L-29)

MID-PACIFIC CONSTRUCTION OFFICE

MID-PACIFIC REGION

NOVEMBER 2015

CONTENTS

	PAGE	
LOCATION MAP.....	i	
STAFFING.....	ii	
GLOSSARY OF TERMS.....	iii	
 CONTRACT/SPECS OR P.O. NO., CONTRACTOR, AND CONTRACT NAME_	 PAGE	 MAP
	<u>NO.</u>	<u>NO.</u>
 CCAO	 1	
R10PC20019 20-C0689 Andritz Hydro Corp. Folsom Power Plant Generators U1, U2, and U3 Rewind and Excitation System Replacement – Folsom Unit, American River Division, Central Valley Project, California	3	1
R13PC20092 20-C0807 Suulutaaq, Inc. Mormon Island Auxiliary Dam Overlay, Safety of Dams Modification – Folsom Unit, Central Valley Project, California	4	1
R14PC20096 20-C0816 Alltech Engineering Corp. Nimbus Dam Radial Gate Repairs, Phase III-American River Division, Central Valley Project, California	6	1
R13PC20159 20-C0819 GD Nielson Construction, Inc. Lake Berryessa Concessions Area Improvements – Lake Berryessa, Solano Project, California	9	2
R15PC00132 20-C0845 Woodward Drilling Company Lake Berryessa Putah Canyon Drinking Water Well, Solano Project, California	10	2
R14PC00125 None Contractor Services Group, Inc. Folsom Temporary Pump Station – Folsom Unit, American River Division, Central Valley Project, California	11	1
GS-07F-0611F None Design Space Modular Modular Office Building - Folsom Dam Resources Building Replacement, Folsom Unit, American River Division, Central Valley Project, California	12	1
 KBAO	 13	
R15PC00080 20-C0836 Andrews Contracting Services, LLC Klamath Basin Area Office Sewer Lift Station, Klamath Basin Area Office, Oregon	15	4

(This Page Left Blank Intentionally)

LBAO	17	
NCAO	21	
R10PC20102 20-C0755 Andritz Hydro Corp. Spring Creek Powerplant Generators G1 and G2 Rewind – Trinity River Division, Central Valley Project, California	23	7
R13PC20172 20-C0817 California Pavement Maintenance Company JF Carr, Spring Creek, and Trinity Powerplants Pavement Rehabilitation - Trinity River Division, Central Valley Project, California	24	7
R15PC00041 20-C0827 Gardner Zemke Company Keswick Powerplant Main Bus Replacement – Shasta Division Central Valley Project, California	25	8
R15PC00089 20-C0831 Contractor Services Group, Inc. Intake 3 Screen Extension, Coleman National Fish Hatchery, California	26	9
R15PC00102 20-C0839 E.C. Smith, Inc. Keswick Fish Trap Brail Replacement, Keswick Dam, California	27	8
R10PC20025 None Tehama Environmental Solutions, Inc. Coleman Fish Hatchery Water Intakes Vegetation Replacement and Monitoring – Shasta Division, Central Valley Project, California	28	9
R11PC2023S None Tehama Environmental Solutions, Inc. Red Bluff Diversion Dam, Fish Passage Improvement Project Terrestrial Mitigation – Sacramento Division, Central Valley Project, California	29	10
SCCAO	31	
R11PC20185 20-C0778 Contra Costa Electric, Inc. Tracy 13.8kV Switchgear/Breaker Replacement – Tracy Pumping Plant and Substation, Delta Division, Central Valley Project, California	33	11
R13PC20508 20-C0788 Slayden Construction Group, Inc. San Luis Demonstration Treatment Plant – San Luis Unit, West Stanislaus Division, Central Valley Project, California	35	12
Regional	39	
R14PC00131 None Tesco Controls, Inc. North Fork Screens and Ladders Gate Modulations - Battle Creek Salmon and Steelhead Restoration Project, California	41	13
R15PC00050 20-CO829 Titan/Meyers JV, Safety and Facility Access Improvements - Hydropower Facility Modifications – Battle Creek Salmon and Steelhead Restoration Project, California	42	13

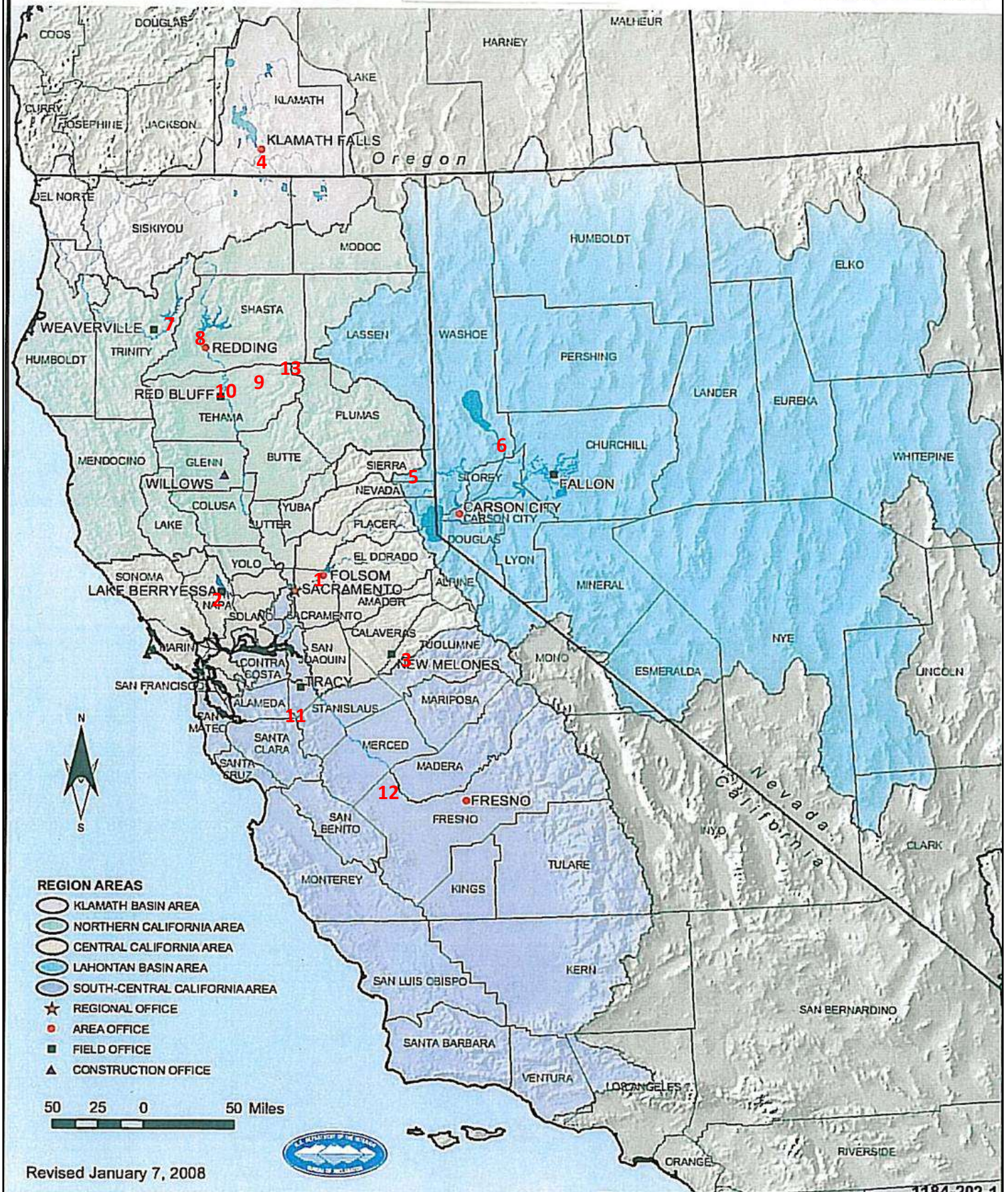
(This Page Left Blank Intentionally)

Contracts in Warranty Status	45
R09PC20R03 20-C0677 Transformer K1A and K2A Replacements, Folsom Power Plant	47
R10PC20767 20-C0703 Folsom Power Plant U1, U2, and U3 Replacement Runners	47
R13PC20143 20-C0803 North Battle Creek Feeder Dam Access Road Completion	47
R14PC00066 No. Spec. No. Red Bluff Well Enhancement	47
R14PC00136 20-C0795 Folsom Dam Civil Maintenance Shops – Building Demolition	47
R14PC00138 None Pivot Gate System, Klamath Basin Area	47
R14PC00083 20-C0823 Marble Bluff Dam, Asphalt Pavement Rehabilitation	47
R14PC20096 20-C0816 P&H Building Temporary Retrofit, Tracy Fish Collecting Facility	47
R15PC00337 20-C0842 Marble Bluff Dam Spillway Repair, Washoe Project, Nevada	47
R13PC20088 20-C0808 Prosser Creek Dam Refurbish High-Pressure Gate Seats and Regulating Gates – Stampede Division, Washoe Project, California	47
R15PC00090 20-C0840 Nimbus Fish Hatchery 16-inch Pipeline Replacement – American River Division, Central Valley Project, California	48
R15PC00064 20-C0830 New Melones Lift Station Repairs – East Side Division, Central Valley Project, California	48

(This Page Left Blank Intentionally)

Mid-Pacific Region

RECLAMATION
Managing Water in the West



Mid-Pacific Region Area Map
Areas Where Work is Performed

(This Page Left Blank Intentionally)

STAFFING - MID PACIFIC CONSTRUCTION OFFICE

The Mid-Pacific Construction Office had 41 construction and administrative employees at the close of this month as follows:

Construction Engineer's Office	2
Preaward and Project Management Group	3
Administrative Management	6
Division of Field Engineering	20
Division of Office Engineering	6
Materials Lab Branch	4

(This Page Left Blank Intentionally)

GLOSSARY OF ACRONYMS AND ABBREVIATIONS

ACRONYM	MEANING
CCAO	Central California Area Office
CVP	Central Valley Project
KBAO	Klamath Basin Area Office
LBAO	Lahontan Basin Area Office
MP	Mid-Pacific Regional Office
MPCO	Mid-Pacific Construction Office
NCAO	Northern California Area Office
SCCAO	South Central California Area Office
TO	Tracy Office

(This Page Left Blank Intentionally)

Central California Area Office

(This Page Left Blank Intentionally)

Contract No. R10PC20019
Specification No. 20-C0689
Folsom Power Plant Generators U1, U2, and U3 Rewind and
Excitation System Replacement – Folsom Unit, American River
Division, Central Valley Project, California
Andritz Hydro Corp., Charlotte, NC

Work Performed	November	0.0%
	Time Elapsed	100%
	Work Completed	95.2%
Contractor Earnings	November	\$0.00
	Previous	\$19,742,130.63
	Total to Date	\$19,742,130.63

Area Office Project Management

Project Manager: Jesse Castro, CC-607

Office Engineering

Contract Administrator: Larry Bowman, MPCO-240

No Invoice was received this reporting period.

Field Engineering

Construction Manager: Reynaldo Garcia, MPCO-310

Construction Representative: Todd Dooley, MPCO-314.

Number of Contractor Employees: 7

Work Performed

Andritz Hydro removed and crated equipment from Folsom Powerplant. They also performed miscellaneous clean-up within the Powerplant, inventoried and provided Reclamation with required spare parts, installed Unit 3 molded boot insulation over flexible AC and DC bus connections, installed bare copper wire and associated brush rigging for grounding the Unit 3 rotor shaft, and installed relays K74 through K75 within the Unit 3 Exciter cabinet EX02.

Contract No. R13PC20092
Specification No. 20-C0807
Mormon Dam Auxiliary Dam Overlay – Safety of Dams
Modification – Folsom Unit, American River Division, Central
Valley Project, California
Suulutaaq, Inc., Suisun City, CA

Work Performed	November	0.0%
	Time Elapsed	51.2%
	Work Completed	31.6%
Contractor Earnings	November	\$3,934,291.38
	Previous	\$14,541,654.93
	Total to Date	\$18,475,946.31

Area Office Project Management

Project Manager: Kyle Keer, CC-108

Office Engineering

Contract Administrator: John Zimmerman, MPCO-230

Invoice 13 was received and forwarded to the Denver finance office for processing. It was not for work done this period, but for work completed through October 20, 2015.

Field Engineering

Construction Manager: Reynaldo Garcia, MPCO-310

Construction Representatives: Sean Frische, MPCO-317; Zahid Wazid, MPCO-349; Gustavo Aguilera, MPCO-337; Bill Linder, MPCO-312

Number of Contractor Employees: 77

Work Performed

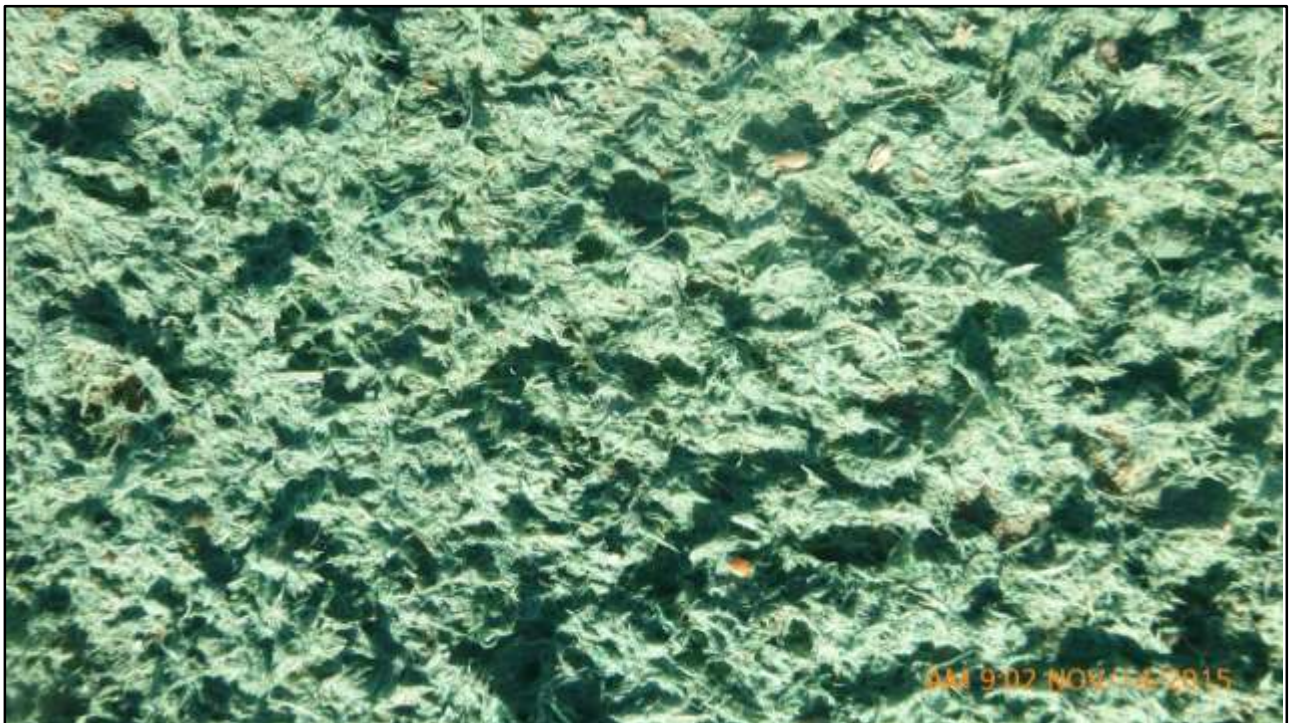
Contractor Suulutaaq removed various chain link and other temporary fencing that surrounded the job site and continued stormwater control duties. Suulutaaq installed cobble, bio-wattles, and biodegradable erosion control blankets along the geotextile lined drainage channel. Suulutaaq also completed seven items off of the punchlist that needed to be completed.

Subcontractor Granite Construction completed contouring Stockpile A and wash plant area and demobilized from the site.

Subcontractor Green Growth Industries continued its revegetation operations around the Stockpile A area and former pond site. These operations consisted of a three step process which includes hydro-seeding, hydro-mulching and applying a tackifier.



Mormon Island Auxiliary Dam Overlay
Subcontractor Green Growth Industries applying revegetation materials to the former pond site



Mormon Island Auxiliary Dam Overlay
A close up view of the hydro-seeding and hydro-mulching coverage during the third application process

Contract No. R14PC20096
Specification No. 20-C0816
Nimbus Dam Radial Gate Repairs, Phase III – American River
Division, Central Valley Project, California
Alltech Engineering Corp., Mendota Heights, MN

Work Performed	November	0.0%
	Time Elapsed	39.0%
	Work Completed	31.7%

Contractor Earnings	November	\$725,544.42
	Previous	\$2,810,303.00
	Total to Date	\$3,535,847.42

Area Office Project Management

Project Manager: Jeff Croshal, CC-607

Office Engineering

Contract Administrator: John Zimmerman, MPCO-230

Invoice 5 was received and forwarded to the Denver finance office for processing. It was not for work done this period, but for work through October 31, 2015.

Field Engineering

Construction Manager: Reynaldo Garcia, MPCO-310

Construction Representatives: Todd Dooley, MPCO-317; Mike Manlick, MPCO-313; Sean Frische, MPCO-317; Howard Diedrich, MPCO-316

Number of Contractor Employees: 11

Work Performed

FD Thomas completed the upstream and downstream blasting of Gate 18. The spent blast medium was removed from the containment area, bagged, and transported off site after lab samples confirmed it to be a non-hazardous state.

Alltech's workers performed the gate metal weld filling/repairs to the 90-plus pits identified during the inspection and measuring operation. Each of these weld repairs were then ground to near-flush with the gate skin. The crew also removed and replaced deteriorated bolts and nuts on the gate.

The expanded metal mesh, used to reinforce the wear pad material, was tack welded onto the upstream side of the skin plate in the areas contacted by the hoist cables.

After performing a brush blast and final cleaning, FD Thomas applied successive coatings of the specified epoxy paint to the upstream and downstream sides of Gate 18. These applications included stripe coats applied to welds, seams, and bolts. After applying the first coat of epoxy to the upstream side of the gate, painters mixed and applied the wearing compound over the cable expanded metal mesh on the wear pads on the left and right upstream sides of the gate.

Prior to applying the final coatings, caulking was applied to crevices, bolts, seams, and skip welds where the coating had not bridged gaps.

After checking the coating work for quality, a punch list was generated and the FD Thomas crew began their pickup work. This work is expected to be completed within the first week of December.

The polywrap sheeting was removed from the downstream side of the scaffolding on Gate 18. Then the scaffolding crew began removing the scaffolding on the last day of the month.

Bulkhead Storage Facility

Brest Painting applied the polyurethane coating over the base epoxy coating on the structural steel columns and rafters of the bulkhead storage building. Dry film thickness testing of the coatings confirmed the proper mil thickness.

Champion Contractors installed the mandoor in the framework on the north end of the building. The crew then installed the base angle and base trim around the perimeter of the concrete slab. Following the construction schedule, the crew next installed the non-insulated exterior wall panels on all four sides of the building. This work included installation of the drip gutters over the two rollup doors and one mandoor. Once in place, all wall panels were securely fastened to the intermediate girders, the interior girder braces and attachment bolts were tightened, and all but one section of the four corner trim pieces on the building were installed.

The rake line was cut along the top of the wall panels on the building's north side. The crew then began installing the roof panels. By the end of the month, the crew had a total of eight panels and one skylight installed. Intermediate screws along each of the panels and skylights remain to be installed.



**Nimbus Dam Radial Gate Repairs, Phase III
FD Thomas foreman performing a discontinuity test on
the coatings on the upstream side of Gate 18**

Contract No. R13PC20159
Specification No. 20-C0819
Lake Berryessa Concessions Area Improvements – Lake
Berryessa, Solano Project, California
G.D. Nielson Construction, Inc., Napa, CA

Work Performed	November	0.0%
	Time Elapsed	100%
	Work Completed	63.6%
Contractor Earnings	November	\$0.00
	Previous	\$663,018.34
	Total to Date	\$663,018.34

Area Office Project Management

Project Manager: Peter Funkhouser, CC-440

Office Engineering

Contract Manager: Larry Bowman, MPCO-240

No Invoice was received during this period.

Field Engineering

Construction Manager: Reynaldo Garcia, MPCO-310

Construction Representative: Bill Linder, MPCO-312

Number of Contractor Employees: 0

Work Performed

There was no onsite work during this period. Work has been suspended until further notice.

Contract No. R15PC00132
Specification No. 20-C0845
Lake Berryessa Putah Canyon Drinking Water Well, Solano
Project, California
Woodward Drilling Company, Rio Vista, CA

Work Performed	November	0.0%
	Time Elapsed	62.2%
	Work Completed	41.9%
Contractor Earnings	November	\$0.00
	Previous	\$39,187.79
	Total to Date	\$39,187.79

Area Office Project Management

Project Manager: Peter Funkhouser, CC-440

Office Engineering

Contract Administrator: Larry Bowman, MPCO-240

This contract was awarded on September 17, 2015 in the amount of \$93,437.65.

No Invoice was received during this period.

The contract was suspended on November 23, 2015.

Field Engineering

Construction Manager: Reynaldo Garcia, MPCO-310

Construction Representative: Bill Linder, MPCO-312

Number of Contractor Employees: 8

Work Performed

Subcontractor KNS Well Data was on site this period and did a video log of the drilled hole to the full depth of 185 feet.

The Contractor started and completed the 24 hour draw down test at the three different pumping rates this period. Water samples were also taken for analytical testing this period.

Contractor started the 72-hour draw down test at 1222hrs on November 10, 2015 and completed the test at 1223hrs on November 13, 2015. The 10-day draw down pump testing was stopped on November 16, 2015 while pumping 7 gpm.

Contract No. R14PC00125
Specification No. None
Folsom Temporary Pump Station – American River Division,
Central Valley Project, California
Contractor Services Group, Inc., West Sacramento, CA

Work Performed	November	5.1%
	Time Elapsed	84.2%
	Work Completed	55.9%
Contractor Earnings	November	\$276,295.60
	Previous	\$2,757,415.31
	Total to Date	\$3,033,710.91

Area Office Project Management

Project Manager: Jose Santana, CCO-607B

Office Engineering

Contract Administrator: Larry Bowman, MPCO-240

This contract was awarded on September 19, 2014, in the amount of \$1,816,216.00. Additional funds were obligated to this contract since the award and have increased the contract value to \$5,424,674.92.

Pay Invoice Number 5 was received this reporting period for work performed up to October 2, 2015.

Field Engineering

Construction Manager: Reynaldo Garcia, MPCO-310

Construction Representative: Benjamin Richburg, MPCO-318

Number of Contractor Employees: 6

Work Activities:

Contractor Services Group and its subcontractor revised pipe alignment on top of the dam and rock pad.

Subcontractor adjusted applicable air release valve fittings throughout the system.

Contractor Services Group dewatered the generators secondary containment.

Contract No. GS-07F-0611F
Order No. R15PD00728
Modular Office Building - Folsom Dam Resources Building
Replacement, Folsom Unit, American River Division, Central
Valley Project, California
Design Space Modular Buildings, Dixon, CA

Work Performed	November	0.0%
	Time Elapsed	58.5%
	Work Completed	0.0%
Contractor Earnings	November	\$0.00
	Previous	\$0.00
	Total to Date	\$0.00

Area Office Project Management

Project Manager: David Nguyen, CCAO-FOO

Office Engineering

Contract Administrator: Larry Bowman, MPCO-240

This contract was awarded on July 17, 2015, in the amount of \$711,548.00.
No Invoice was received this reporting period.

Field Engineering

Construction Manager: Reynaldo Garcia, MPCO-310

Construction Representative: Benjamin Richburg, MPCO-318

Number of Contractor Employees: 0

Work Performed

There was no onsite work performed during this period.

Klamath Basin Area Office

(This Page Left Blank Intentionally)

Contract No. R15PC00080
Specification No. 20-C0836
Klamath Basin Area Office Sewer Lift Station, Klamath Basin
Area Office, Oregon
Andrews Contracting Services, LLC, Vancouver, WA

Work Performed	November	0.0%
	Time Elapsed	37.0%
	Work Completed	0.0%
Contractor Earnings	November	\$0.00
	Previous	\$0.00
	Total to Date	\$0.00

Area Office Project Management
Project Manager: William Vanderwaal, MPCO-122

Office Engineering
Contract Manager: Kent Perkes, MPCO-225

No Invoice was received during this period.

Field Engineering
Construction Manager: Brian Wagner, MPCO-300
Construction Representative: Russell Davies, MPCO-341

Number of Contractor Employees: 0

Work Performed
No onsite work was performed during this period.



Klamath Basin Area Office Sewer Lift Station
United States Bureau of Reclamation Klamath Falls office is shown on the left. A sewer pipeline will be constructed along the north and south sides of Joe Wright Road, terminating along Swan Court on the right.

Lahontan Basin Area Office

(This Page Left Blank Intentionally)

There were no active contracts in this area during this period.

(This Page Left Blank Intentionally)

Northern California Area Office

(This Page Left Blank Intentionally)

Contract No. R10PC20102
Specification No. 20-C0755
Spring Creek Powerplant Generators G1 and G2 Rewind – Trinity
River Division, Central Valley Project, California
Andritz Hydro Corp., Charlotte, NC

Work Performed	November	0.0%
	Time Elapsed	100%
	Work Completed	100%

Contractor Earnings	November	\$0.00
	Previous	\$11,979,860.39
	Total to Date	\$11,979,860.39

Area Office Project Management

Project Manager: Joe Ascoli, NC-650

Office Engineering

Contract Manager: Kevin Jacobs, MPCO-214

No Invoice was received during this period.

Field Engineering

Construction Manager: Brian Wagner, MPCO-300

Construction Representative: Stephen Holmes, MPCO-320

Work Performed

No onsite work was performed during this period.

Contract No. R13PC20172
Specification No. 20-C0817
JF Carr, Spring Creek, and Trinity Powerplant Pavement
Rehabilitation – Trinity River Division, Central Valley Project,
California
California Pavement Maintenance Company, Inc., Sacramento,
CA

Work Performed	November	47.0%
	Time Elapsed	100.0%
	Work Completed	100.0%
Contractor Earnings	November	\$130,338.30
	Previous	\$105,844.05
	Total to Date	\$236,182.35

Area Office Project Management

Project Manager: Hank Harrington, NC-210

Office Engineering

Contract Manager: Kevin Jacobs, MPCO-214

Invoice Number 03 was received in the amount of \$130,338.30, for work performed during the period of October 15, 2015 through October 30, 2015.

Field Engineering

Construction Manager: Stephen Holmes, MPCO-320

Construction Representative: Fernando Pavone, MPCO-333

Number of Contractor Employees: 4

Work performed

The Contractor removed and replaced asphaltic concrete, applied slurry seal and crack seal at the Trinity Powerplant, then painted traffic lines.

Contract No. R15PC00041
Specification No. 20-C0827
Keswick Powerplant Main Bus Replacement – Shasta Division,
Central Valley Project, California
Gardner Zemke Company, Albuquerque, NM

Work Performed	November	0.0%
	Time Elapsed	58.5%
	Work Completed	0.5%
Contractor Earnings	November	\$0.00
	Previous	\$11,504.00
	Total to Date	\$11,504.00

Area Office Project Management

Project Manager: Jeff Gifford, NC-620

Office Engineering

Contract Manager: Kevin Jacobs, MPCO-214

No Invoice was received during this period.

Field Engineering

Construction Manager: Brian Wagner, MPCO-300

Construction Representative: Stephen Holmes, MPCO-320

Number of Contractor Employees: 0

Work Performed

No onsite work was performed during this period.

Contract No. R15PC00089
Specification No. 20-C0831
Intake 3 Screen Extension, Coleman National Fish Hatchery, CA
Contractor Services Group, Inc., West Sacramento, CA

Work Performed	November	0.0%
	Time Elapsed	20%
	Work Completed	0.0%
Contractor Earnings	November	\$0.00
	Previous	\$0.00
	Total to Date	\$0.00

Area Office Project Management

Project Manager: Hank Harrington, NC-210

Office Engineering

Contract Manager: Kent Perkes, MPCO-225

No Invoice was received during this period.

Field Engineering

Construction Manager: Brian Wagner, MPCO-300

Construction Representative: Fernando Pavone, MPCO-333

Number of Contractor Employees: 0

Work Performed

No onsite work was performed during this period.

Contract No. R15PC00102
Specification No. 20-C0839
Keswick Fish Trap Brail Replacement, Keswick Dam, CA
E.C. Smith, Inc., Anderson, CA

Work Performed	November	0.0%
	Time Elapsed	90%
	Work Completed	56.2%
Contractor Earnings	November	\$0.00
	Previous	\$215,450.00
	Total to Date	\$215,450.00

Area Office Project Management

Project Manager: Laurie Larson, NC-211

Office Engineering

Contract Manager: Kent Perkes, MPCO-225

No Invoice was received during this period.

Field Engineering

Construction Manager: Brian Wagner, MPCO-300

Construction Representative: Jason Foust, MPCO-325

Number of Contractor Employees: 0

Work Performed

No onsite work was performed during this period.

Contract No. R10PC20025

Specification No. None

**Coleman Fish Hatchery Water Intakes Vegetation Replacement
and Monitoring – Shasta Division, Central Valley Project,
California**

Tehama Environmental Solutions, Inc., Red Bluff, CA

Work Performed	November	0.0%
	Time Elapsed	90.6%
	Work Completed	92.9%
Contractor Earnings	November	\$0.00
	Previous	\$800,345.56
	Total to Date	\$800,345.56

Area Office Project Management

Project Manager: Hank Harrington, NC-210

Office Engineering

Contract Manager: Kevin Jacobs, MPCO-214

No Invoice was received during this period.

Field Engineering

Construction Manager: Brian Wagner, MPCO-300

Construction Representative: Fernando Pavone, MPCO-333

Number of Contractor Employees: 0

Work performed

The Contractor's current activity consists of maintaining and monitoring vegetation it planted in 2010.

No onsite work was performed during this period.

Contract No. R11PC2023S
Specification No. None
Red Bluff Diversion Dam, Fish Passage Improvement Project
Terrestrial Mitigation – Sacramento River Division, Central Valley
Project, California
Tehama Environmental Solutions, Inc., Red Bluff, California

Work Performed	November	1.1%
	Time Elapsed	63.6%
	Work Completed	97.1%
Contractor Earnings	November	\$51,235.54
	Previous	\$4,668,227.91
	Total to Date	\$4,719,463.44

Area Office Project Management

Project Manager: Hank Harrington, NC-210

Office Engineering

Contract Manager: Kevin Jacobs, MPCO-214

Invoice Number 18 was received in the month of November in the amount of \$51,235.54 for work performed July 1, 2015 to September 30, 2015.

Field Engineering

Construction Manager: Brian Wagner, MPCO-300

Construction Representative: Fernando Pavone, MPCO-333

Number of Contractor Employees: 0

Work performed

The Contractor's current activity consists of maintaining and monitoring vegetation it planted in 2010.

(This Page Left Blank Intentionally)

South Central California Area Office

(This Page Left Blank Intentionally)

Contract No. R11PC20185
Specification No. 20-C0778
Tracy 13.8kV Switchgear/Breaker Replacement – Tracy Pumping Plant and Substation – Delta Division, Central Valley Project, California
Contra Costa Electric Corp., Martinez, CA

Work Performed	November	5.1%
	Time Elapsed	95.2%
	Work Completed	87.5%
Contractor Earnings	November	\$690,737.22
	Previous	\$10,871,010.96
	Total to Date	\$11,561,748.18

Area Office Project Management

Project Manager: William Dutton, TO-435

Office Engineering

Contract Manager: Amber Pierce, MPCO-205

This is a design/build contract.

Invoice No. 22, in the amount of \$690,737.22, was received and processed during this period for work performed during October.

Field Engineering

Field Engineer: Stephen Holmes

Construction Control Representative: David B. Derk

Number of Contractor employees: 32

Work Performed

Contra Costa Electric, Inc. received building 6A, finished installing all control and fiber wires, and power cables from building 6A to control room and pumping plant. Installed 6A reactors and 6-inch tubular bus work between building 6A and WAPA disconnect switch. Made connections of the nonsegregated bus at building 6A to buildings B15 and 11A. Welded building 6A metal to the embed plates in the concrete foundations. Tested all installed cables and wires, and conducted point to point checks. Started replacing the volt and amp meters in control room control panel and the four buildings, and installed arc flash cover plates in the lower breaker cubicles in the buildings. Contra Costa Electric, Inc. also began cleaning up work site and prepared for demobilization.

Bigge Crane set building 6A onto concrete slab

Powell repaired breaker in building 6A and replaced damaged selector switch in building 8A. They also repaired and replaced other miscellaneous items.

Power Pros started pre-function testing on switchgear 6A and tested 6A reactors



Tracy 13.8 kV Switchgear/Breaker Replacement
Overview of work site on the south side of the switchgear buildings, showing
current limiting reactors, with building 6A in the foreground

Contract No. R13PC20508
Specification No. 20-C0788
San Luis Demonstration Treatment Plant – San Luis Unit, West
San Joaquin Division, Central Valley Project, California
Slayden Construction Group, Inc., Stayton, OR

Work Performed	November	0.0%
	Time Elapsed	104%
	Work Completed	92.4%

Contractor Earnings	November	\$286,023.80
	Previous	\$22,690,635.75
	Total to Date	\$22,976,659.55

Area Office Project Management

Project Manager: Sheryl Carter, SCC-105

Office Engineering

Contract Administrator: Casandra Arthur, MPCO-111

Invoice Number 26 was received and forwarded to Denver finance office for payment. It was not for work completed in this period, but for work completed through September 30, 2015.

No modifications were executed during this time frame.

Field Engineering

Onsite Government Representative: Casandra Arthur, MPCO-111

Contract Control Representative: Sean Hill, MPCO-328

Number of Contractor Employees: 9

Work performed

Onsite construction work for Unilateral Modifications 0013 and 0016 continues.

Slayden Construction Group removed and replaced the Advanced Biological Metals Removal (ABMet) System First and Second Stage pump discharge piping; constructed equipment racks and installed new instruments and associated plumbing for turbidity, pH/Temp, and Chlorine instruments in the pretreatment area; installed the plumbing on the new Antiscalant pump skid; installed pressure transmitters at the interstage of the RO Systems; assisted with the installation of carbon media into the ABMet First Stage bioreactor tanks; and general housekeeping activities.

GE Water and Power Field Service Representatives (FSRs) continued punchlist items to prepare for plant restart and overseeing the installation and backwashing of the new coconut based granulated activated carbon (GAC) in the ABMet First Stage bioreactor tanks.

Water Dynamics continued backwashing the Advanced Biological Metals Removal (ABMet) System and assisted SCG crew and GE FSRs as necessary with restart activities.

Con J Franke Electrical continued installing electrical conduit and conduit for nutrient feed pump variable frequency drives (VFDs) and pretreatment valves. Wire checkouts with Reclamation Field Staff began on installed electrical systems.

Mason's Painting was onsite to paint newly installed piping and valves.

Calgon Carbon onsite to install new GAC in the ABMet First Stage bioreactor tanks.



**San Luis Demonstration Treatment Plant
Removal and replacement of the ABMet First and Second Stage Feed piping**



**San Luis Demonstration Treatment Plant
Completed ABMet Second Stage pump discharge feed piping**



**San Luis Demonstration Treatment Plant
Installation of the new coconut based granulated activated carbon in the ABMet
First Stage bioreactor tanks**

Mid-Pacific Regional Office

(This Page Left Blank Intentionally)

Contract No. R14PC00131

Specification No. C0821

North Fork Screens and Ladders Gate Modulations - Battle Creek

Salmon and Steelhead Restoration Project, California

Tesco Controls, Inc., Sacramento, CA

Work Performed	November	0.0%
	Time Elapsed	100%
	Work Completed	97.4%

Contractor Earnings	November	\$0.00
	Previous	\$377,419.13
	Total to Date	\$377,419.13

Area Office Project Management

Project Manager: Mary Marshall, MP-203

Office Engineering

Contract Manager: Kent Perkes, MPCO-225

Field Engineering

Construction Manager: Brian Wagner, MPCO-300

Construction Representative: Jeffrey Kelly, MPCO-322

Number of Contractor Employees: 0

Work Performed

No onsite work was performed during this period.

Contract No. R15PC00050
Specification No. CO829
Safety and Facility Access Improvements - Hydropower Facility
Modifications - Battle Creek Salmon and Steelhead Restoration
Project, CA
Titan/Meyers JV, Redding, CA

Work Performed	November	0.0%
	Time Elapsed	72%
	Work Completed	49.3%
Contractor Earnings	November	\$0.00
	Previous	\$264,962.10
	Total to Date	\$264,962.10

Area Office Project Management

Project Manager: Mary Marshall, MP-203

Office Engineering

Contract Manager: Kent Perkes, MPCO-225

No Invoice was received during this period.
Reviewed and processed required submittals.

Field Engineering

Construction Manager: Brian Wagner, MPCO-300
Construction Representative: Jeffrey Kelly, MPCO-322

Number of Contractor Employees: 10

Work Performed

The JLG reach lift and CAT 247B skid steer were mobilized and demobilized during this period. The crew was onsite to continue the installation of the chain link fence. The soil mounted and side mounted posts were installed on the outlet structure. The fabric, cross members, tensioners, overhangs and personnel gate were installed. The installation of the chain link fence is 100% complete.

The access staircase was installed at the Inskip Powerhouse. The JLG reach lift was used to move and place the galvanized staircase. The staircase was installed in accordance with the contract drawings. The installation of the staircase is 100% complete.

The grating extension was installed at the gate actuator on the walkway over the Inskip powerhouse outlet. The grating was installed in accordance with the contract drawings. This activity is 100% complete.

The metal pipe guardrails were installed at the Inskip Powerhouse. The guardrails were bolted to the concrete with SS wedge anchors. The guardrails were installed in accordance with the contract drawings. The installation of the guardrails is 100% complete.

Electricians were onsite to ground the metal items at the Inskip powerhouse. 4/0 AWG bare twisted copper wire was used to connect the items to the grounding rods. The copper wire was cad welded to the grounding rods and clamped to the metal items. The staircase, guardrails and chain-link fence were grounded in this fashion. This activity is 100% complete.



Safety and Facility Access Improvements – Battle Creek Salmon and Steelhead Restoration Project

The metal grating was installed at the gate actuator on the walkway over the outlet.

(This Page Left Blank Intentionally)

Contracts in Warranty Status

(This Page Left Blank Intentionally)

R09PC20R03 20-C0677 Transformer K1A and K2A Replacements, Folsom Power Plant: There was no Office Engineering Administrative activity this period. 5-year warranty for K1A extends to January 30, 2016, and that for K2A extends to January 4, 2017.

R10PC20767 20-C0703 Folsom Power Plant U1, U2, and U3 Replacement Runners: There was no Office Engineering Administrative activity during this period. 2-year warranty period began January 28, 2015 and will end January 27, 2017

R13PC20143 20-C0803 North Battle Creek Feeder Dam Access Road Completion There was no Office Engineering Administrative activity during this period. 1-year warranty period began March 3, 2015 and will end March 2, 2016

R14PC00066 No Spec No. Red Bluff Well Enhancement There was no Office Engineering Administrative activity this period 1-year warranty period began December 9, 2014 and will end December 8, 2015

R14PC00136 20-C0795 Folsom Dam Civil Maintenance Shops – Building Demolition There was no Office Engineering Administrative activity during this period. 1-year warranty period began March 20, 2015 and will end March 20, 2016.

R14PC00138 No Spec. No. Pivot Gate System, Klamath Basin Area Office There was no Office Engineering Administrative activity during this period. 1-year warranty period began May 8, 2015 and will end May 7, 2016.

R14PC00083 20-C0823 Marble Bluff Dam, Asphalt Pavement Rehabilitation There was no Office Engineering Administrative activity during this period. 1-year warranty period began May 26, 2015 and will end May 27, 2016.

R14PC20096 20-C0816 P&H Building Temporary Retrofit, Tracy Fish Collecting Facility There was no Office Engineering Administrative activity during this period. 1-year warranty period began August 4, 2015 and will end August 5, 2016.

R15PC00337 20-C0842 Marble Bluff Dam Spillway Repair, Washoe Project, Nevada There was no Office Engineering Administrative activity during this period. The 1 year warranty period began on October 1, 2015 and will end October 2, 2016.

R13PC20088 20-C0808 Prosser Creek Dam Refurbish High-Pressure Gate Seats and Regulating Gates, Stampede Division, Washoe Project, California There was no Office Engineering Administrative activity during this period. The 1-year warranty period began on November 5, 2015 and will end November 6, 2016.

R15PC00090 20-C0840 Nimbus Fish Hatchery 16" Pipeline Replacement, Central Valley Project, California There was no Office Engineering Administrative activity during this period. The 1-year warranty period began on October 22, 2015 and will end on October 23, 2016.

R15PC00064 20-C0830 New Melones Lift Station Repairs – East Side Division, Central Valley Project, California Office Engineering Administrative activity consisted of reviewing and processing required submittals to complete the closeout of the contract. The 1 Year warranty period began on October 23, 2015 and will end on October 22, 2016