

Klamath Basin

Oregon

Crater Lake Natl. Park

Wood River

Willamson River

Upper Klamath Lake

Sprague River

Klamath Falls

Gerber Reservoir

Lost River

Lower Klamath Lake Natl. Wildlife Refuge

Tule Lake Natl. Wildlife Refuge

Clear Lake Reservoir

Klamath River

Yreka

Shasta River

Weed

Scott River

Requa

Salmon River

Shasta Reservoir

Trinity River

Weaverville

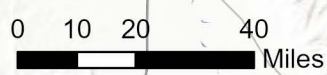
California

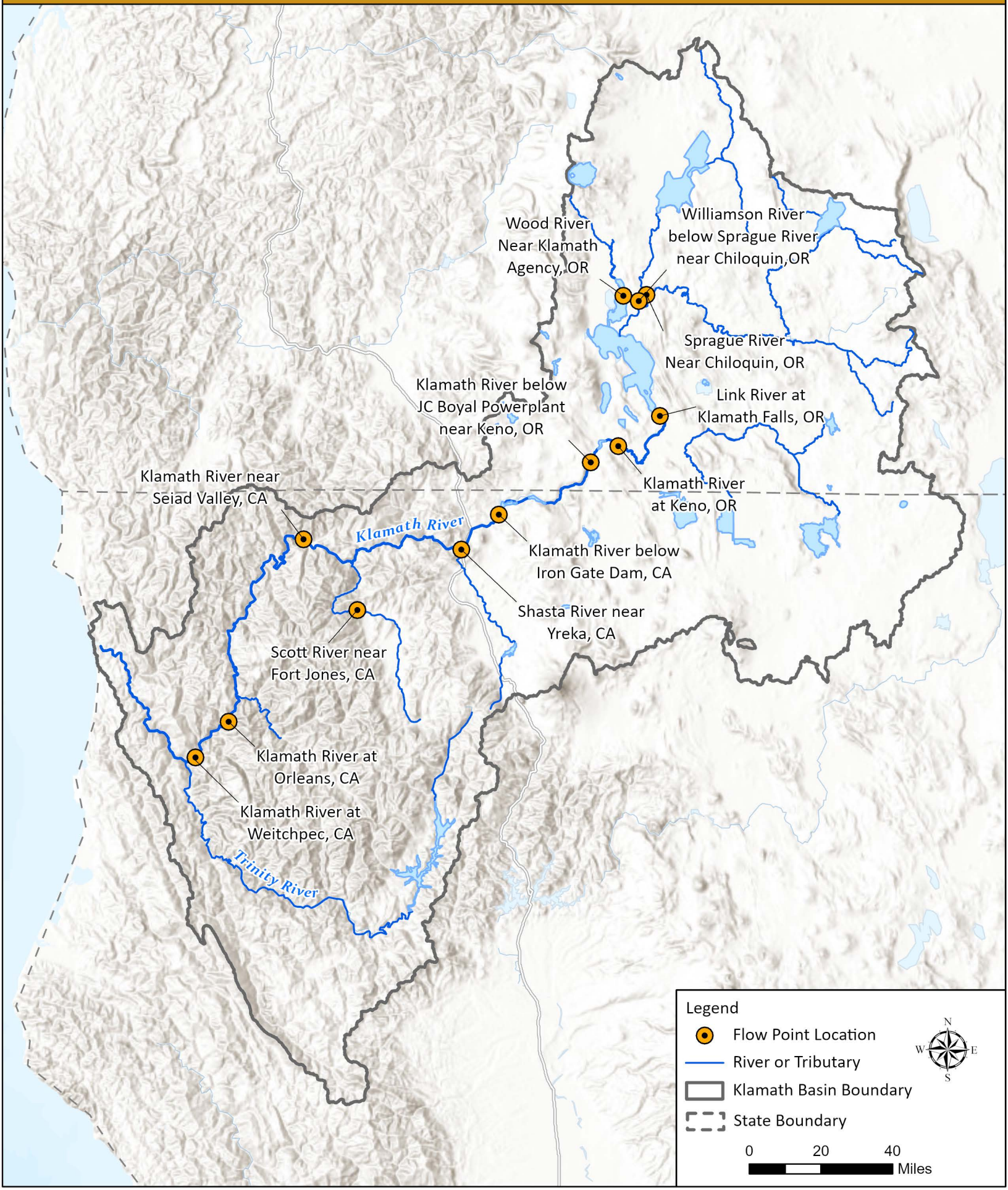
Legend

- Major Reclamation Dam
- Major PacifiCorp Dam
- Major City
- Major River or Tributary
- Road or Highway
- Klamath Basin Boundary
- State Boundary
- Crater Lake National Park
- National Wildlife Refuge
- Lake or Reservoir





Tribal Lands

- Hoopa Valley Indian Reservation
- Karuk Tribe
- Klamath Tribe
- Quartz Valley Rancheria
- Resighini Rancheria
- Yurok Indian Reservation



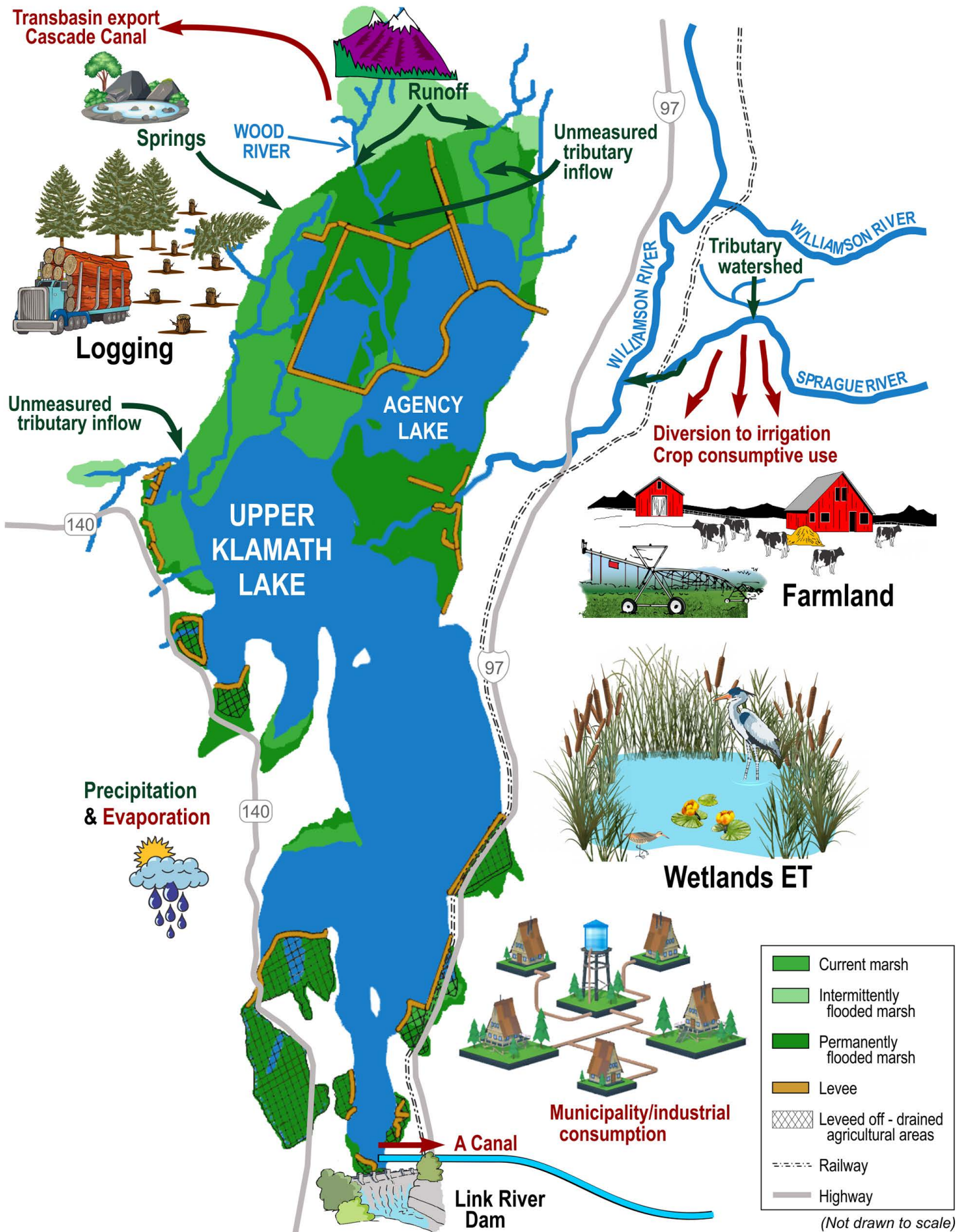







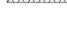

Legend

-  Flow Point Location
-  River or Tributary
-  Klamath Basin Boundary
-  State Boundary

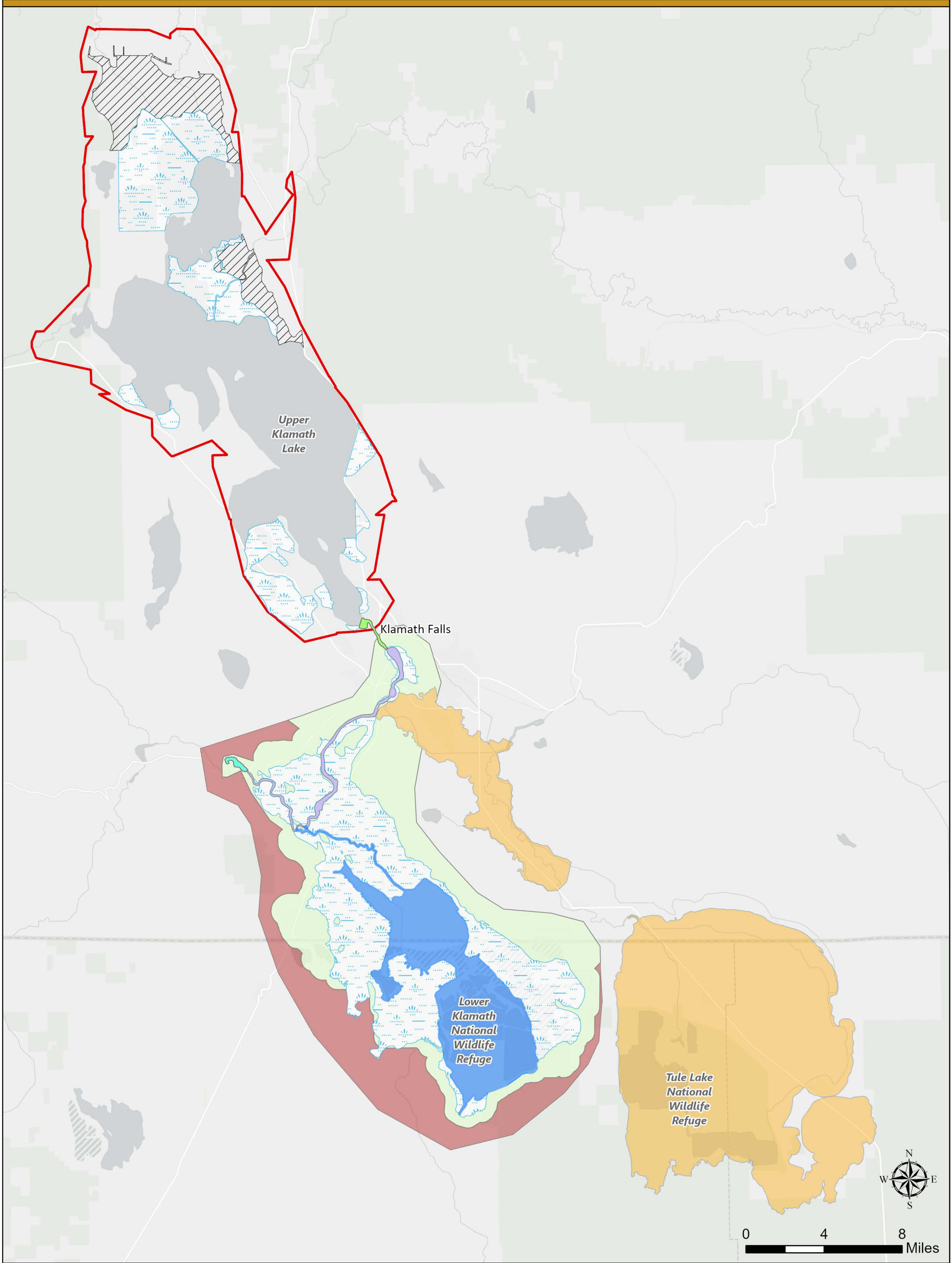


0 20 40 Miles

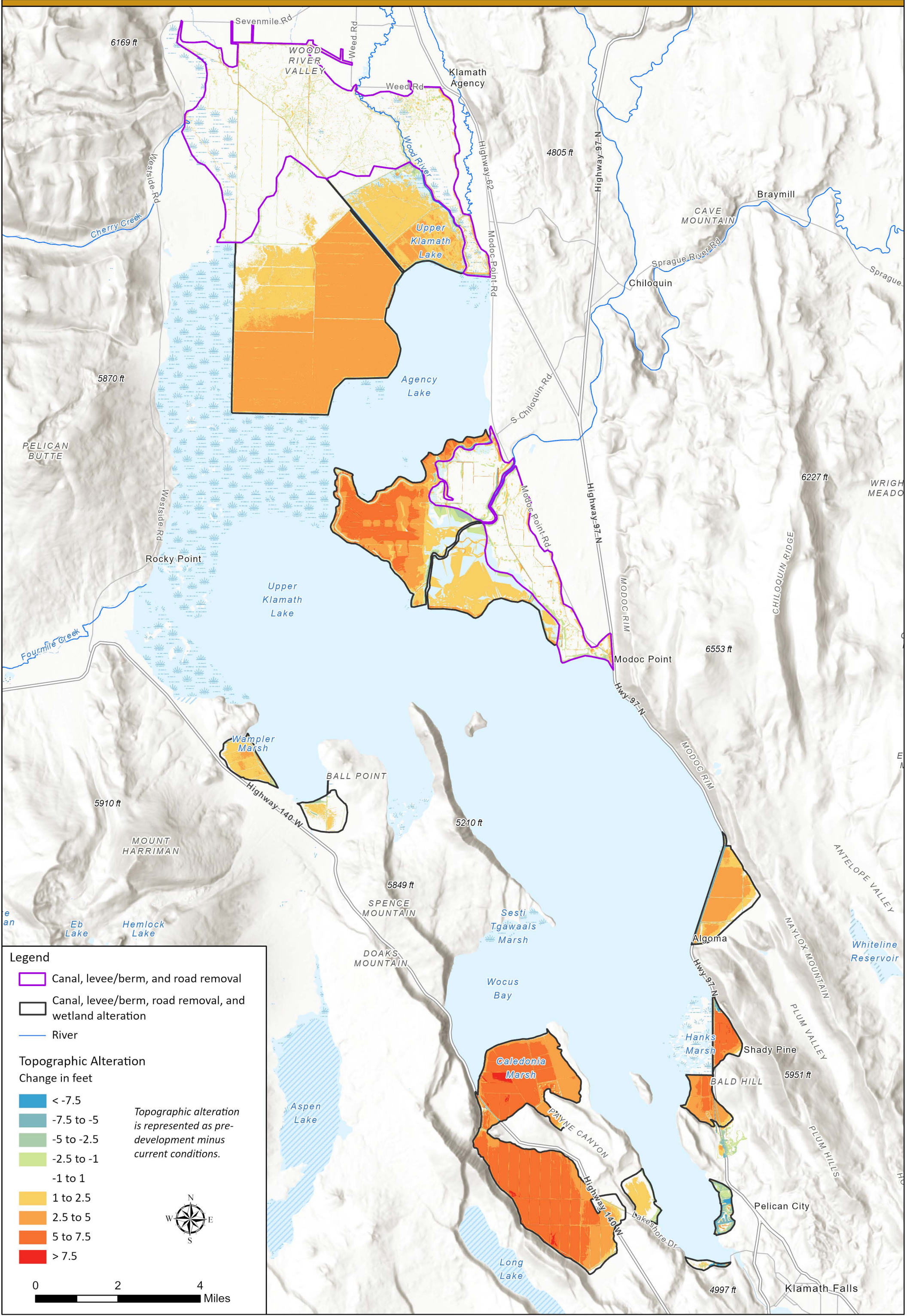


	Current marsh
	Intermittently flooded marsh
	Permanently flooded marsh
	Levee
	Leveed off - drained agricultural areas
	Railway
	Highway

(Not drawn to scale)



Legend			
	Pre-development Marsh		2010 LiDAR - smoothed infrastructure
	Keno Dam Design Drawing Contours		2020 LiDAR - roads, levees/berms, canals removed
	1905 Topography		2020 LiDAR and 2021 Bathymetry
	1905 Bathymetry		2018 LiDAR and 2019 Bathymetry
	UKL Lower Reef and Putnam's Point Reef Contours		USGS 10-m DEM



Legend

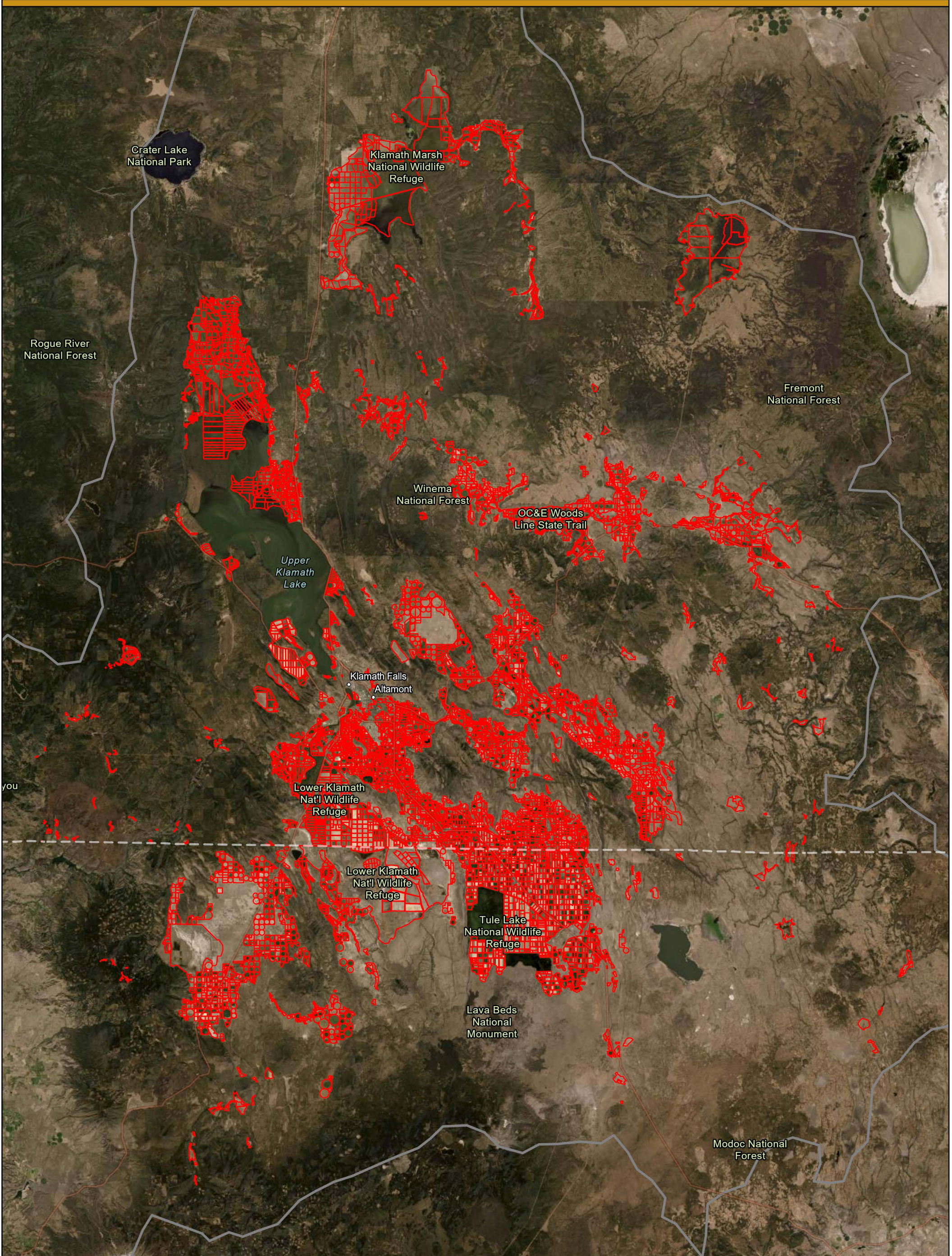
- Canal, levee/berm, and road removal
- Canal, levee/berm, road removal, and wetland alteration
- River

Topographic Alteration
Change in feet



- < -7.5
- 7.5 to -5
- 5 to -2.5
- 2.5 to -1
- 1 to 1
- 1 to 2.5
- 2.5 to 5
- 5 to 7.5
- > 7.5


Topographic alteration is represented as pre-development minus current conditions.

0 2 4 Miles

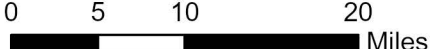


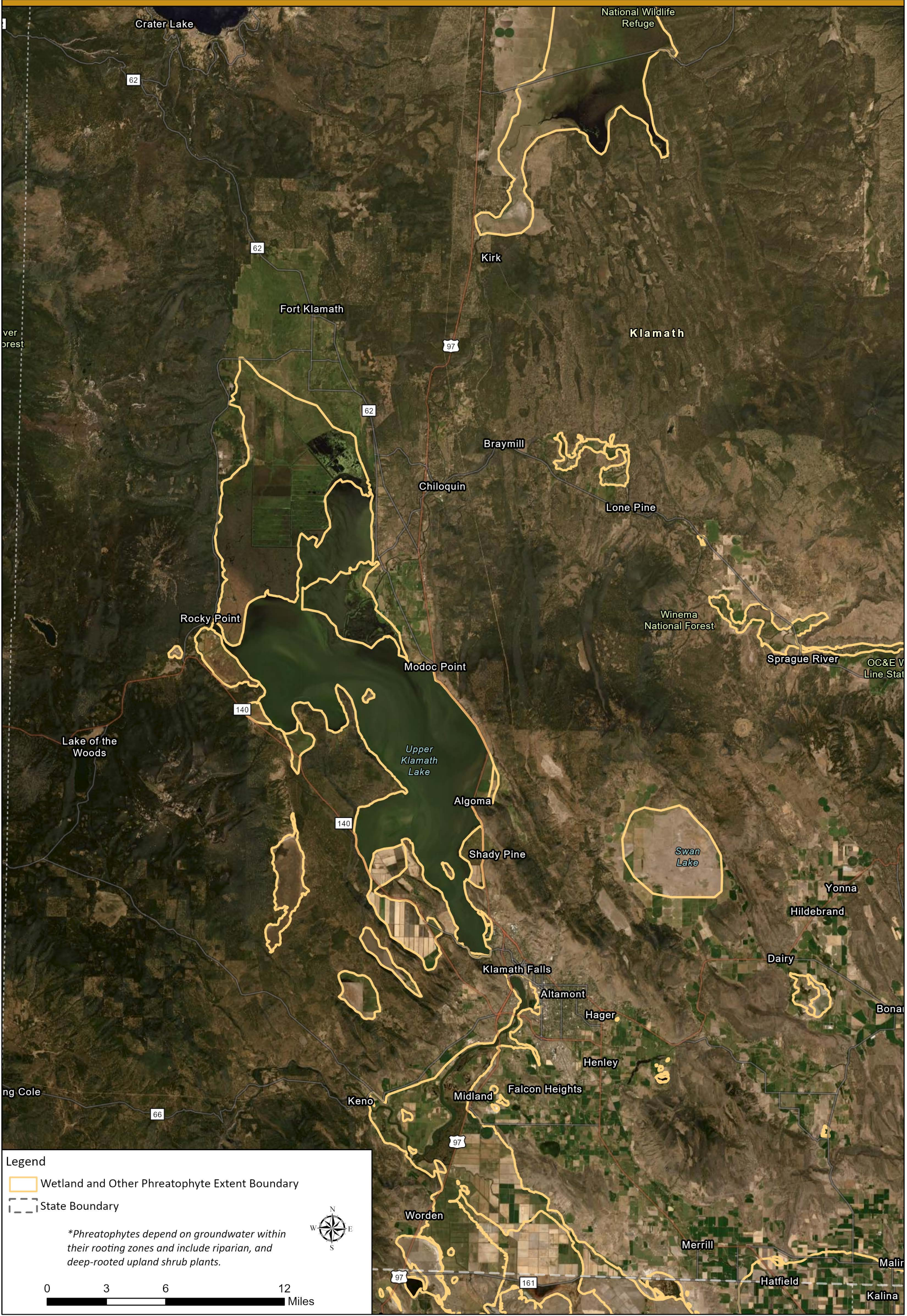
Legend

-  Agricultural District Boundary
-  State Boundary



0 5 10 20 Miles


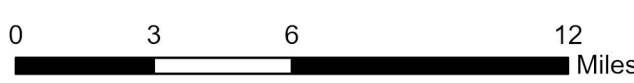


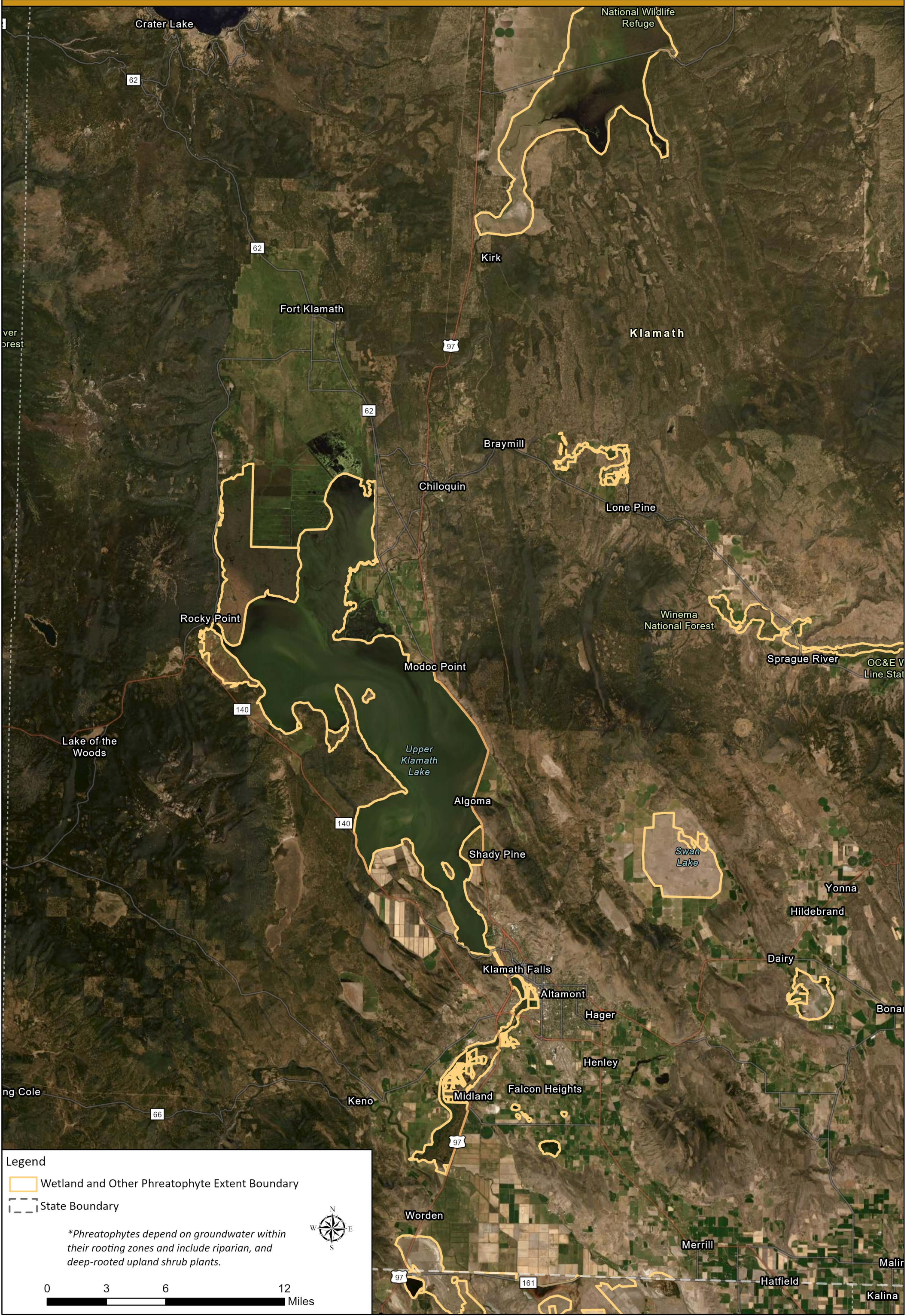


Legend

- Wetland and Other Phreatophyte Extent Boundary
- State Boundary

**Phreatophytes depend on groundwater within their rooting zones and include riparian, and deep-rooted upland shrub plants.*



Legend

- Wetland and Other Phreatophyte Extent Boundary
- State Boundary

**Phreatophytes depend on groundwater within their rooting zones and include riparian, and deep-rooted upland shrub plants.*