



— BUREAU OF —  
RECLAMATION

# Klamath Project Water Supply Update

July 20, 2020

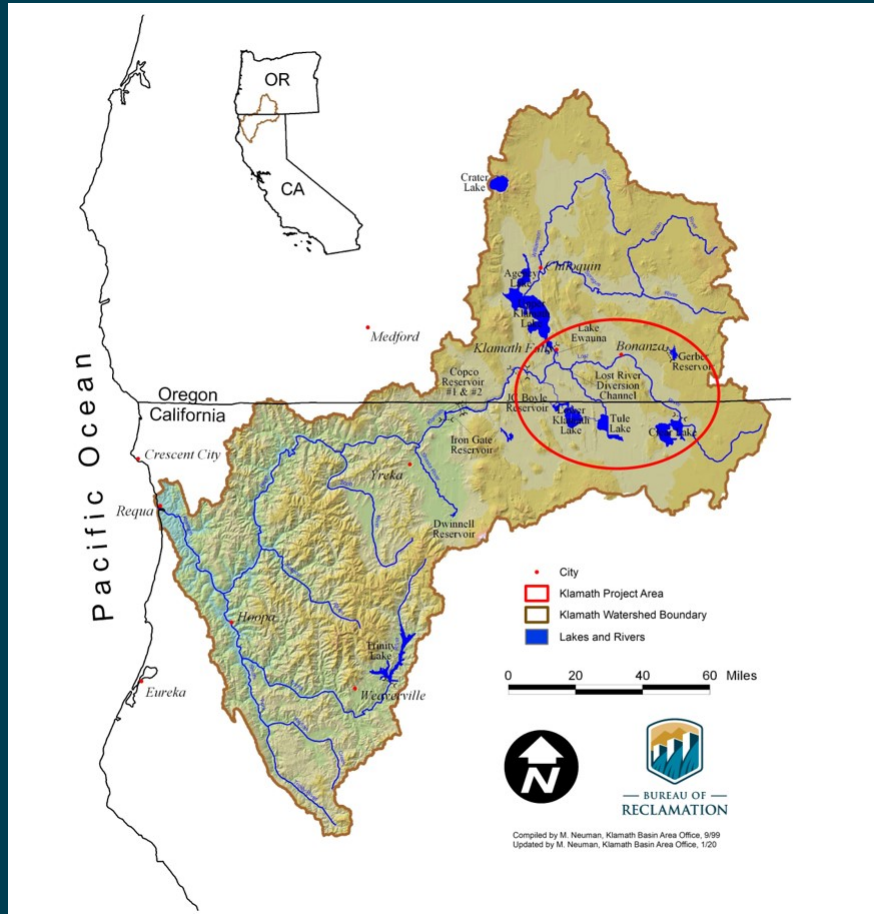
# Klamath Project Deliveries from Upper Klamath Lake (UKL)

- Effective date: 7-20-20
- Values in Acre-Feet

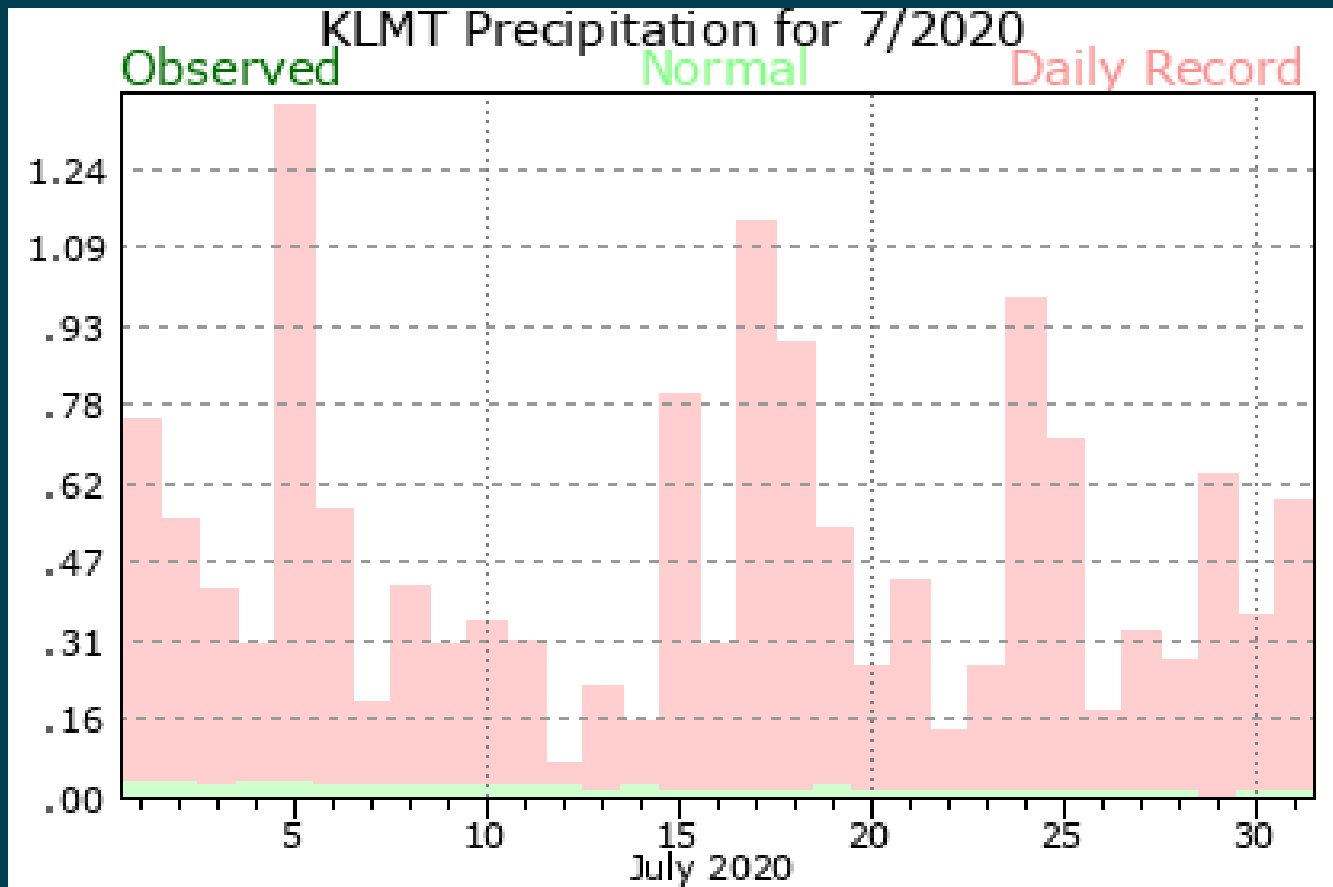
| Month        | Ag from UKL | Diverted to Date | Remaining |
|--------------|-------------|------------------|-----------|
| March        | 128         | 128              | 0         |
| April        | 17,199      | 17,199           | 0         |
| May          | 17,814      | 17,814           | 0         |
| June         | 24,179      | 24,179           | 0         |
| July         | 36,798      | 23,118           | 13,680    |
| August       | 28,879      |                  | 28,879    |
| September    | 18,478      |                  | 18,478    |
| October      | 3,423       |                  | 3,423     |
| November     | 93          |                  | 93        |
| Total Season | 147,002     | 82,438           | 64,564    |



# Klamath Basin



# Klamath Falls Airport Precipitation



July 1 to 12 rainfall = 0.00", Normal = 0.37"



# Inches of Precipitation at Klamath Airport during 2020 Hydro Year

| Month    | Monthly Total | Normal | Departure from Normal |
|----------|---------------|--------|-----------------------|
| October  | 0.39          | 1.05   | -0.66                 |
| November | 0.11          | 2.19   | -2.08                 |
| December | 1.67          | 1.45   | 0.22                  |
| January  | 1.50          | 1.85   | -0.35                 |
| February | 0.12          | 1.92   | -1.80                 |
| March    | 0.75          | 1.27   | -0.52                 |
| April    | 0.23          | 1.37   | -1.14                 |
| May      | 1.18          | 1.38   | -0.20                 |
| June     | 0.18          | 1.04   | -0.86                 |
| 20-July  | 0.00          | 0.28   | -0.28                 |
| Total    | 6.13          | 13.89  | -7.76                 |

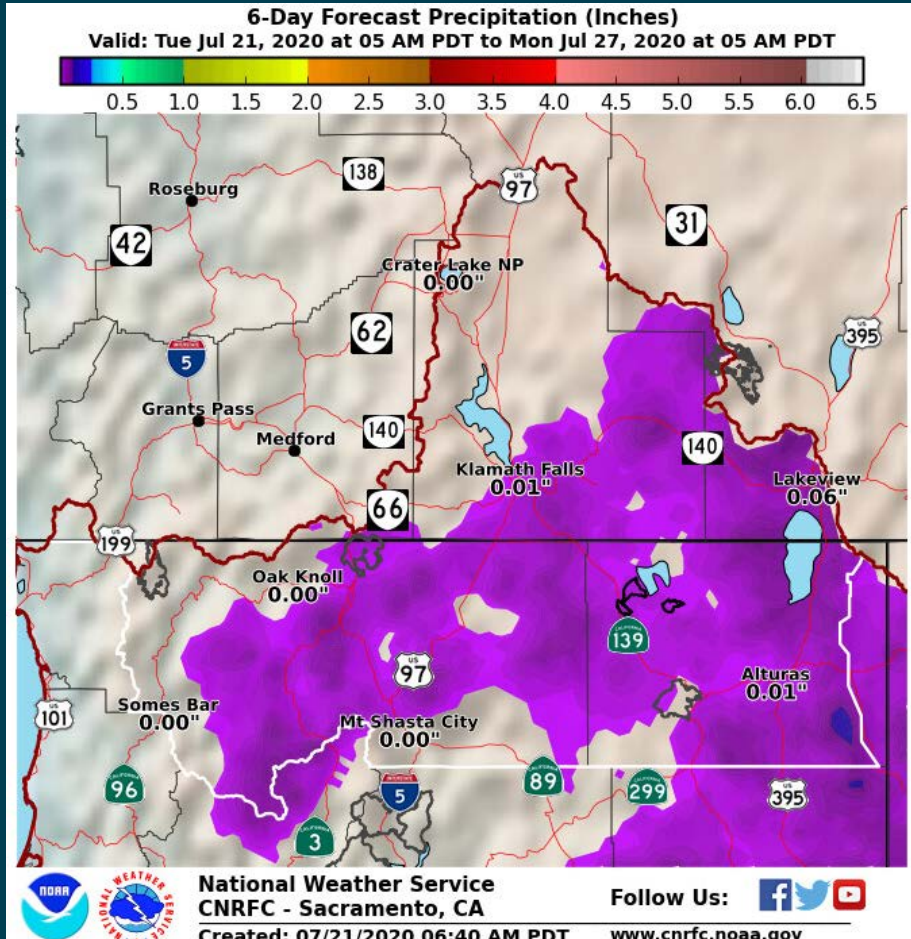


# Klamath Basin Forecast – July 21

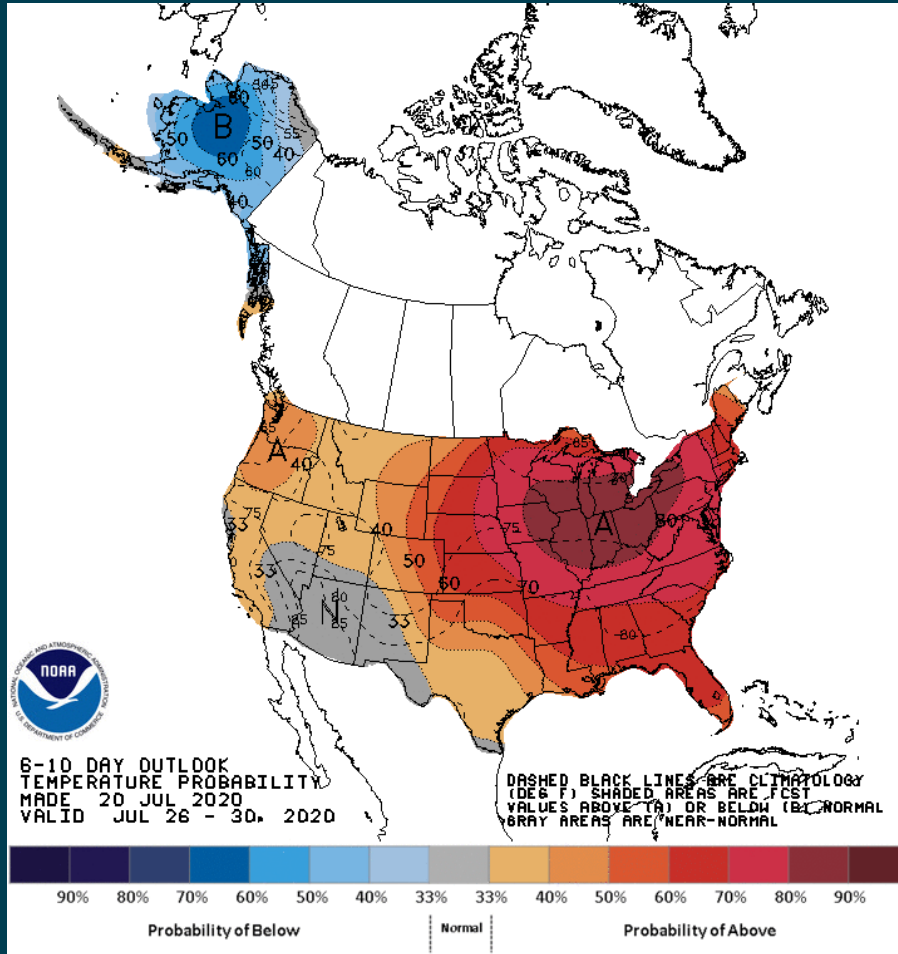
| Day             | Detailed Forecast  |
|-----------------|--|
| Tuesday         | Sunny, with a high near 95. Calm wind becoming west northwest 5 to 9 mph in the afternoon.   |
| Tuesday night   | Isolated showers and thunderstorms before 11pm. Partly cloudy, with a low around 61. Northwest wind 5 to 14 mph, with gusts as high as 21 mph. Chance of precipitation is 20%. |
| Wednesday       | Mostly sunny, with a high near 95. Calm wind becoming west 5 to 9 mph in the morning.  |
| Wednesday night | A 20 percent chance of showers and thunderstorms before 11pm. Mostly clear, with a low around 57. West northwest wind 5 to 13 mph, with gusts as high as 20 mph.               |
| Thursday        | Sunny, with a high near 87. Calm wind becoming west 5 to 7 mph in the afternoon.   |
| Thursday night  | Mostly clear, with a low around 52.  |
| Friday          | Sunny, with a high near 89.  |
| Friday night    | Clear, with a low around 53.   |
| Saturday        | Sunny, with a high near 91.  |
| Saturday night  | Mostly clear, with a low around 55.  |
| Sunday          | Sunny, with a high near 93.  |
| Sunday night    | Mostly clear, with a low around 58.  |
| Monday          | Sunny, with a high near 95.  |



# 6-Day Forecast Precipitation (Inches)

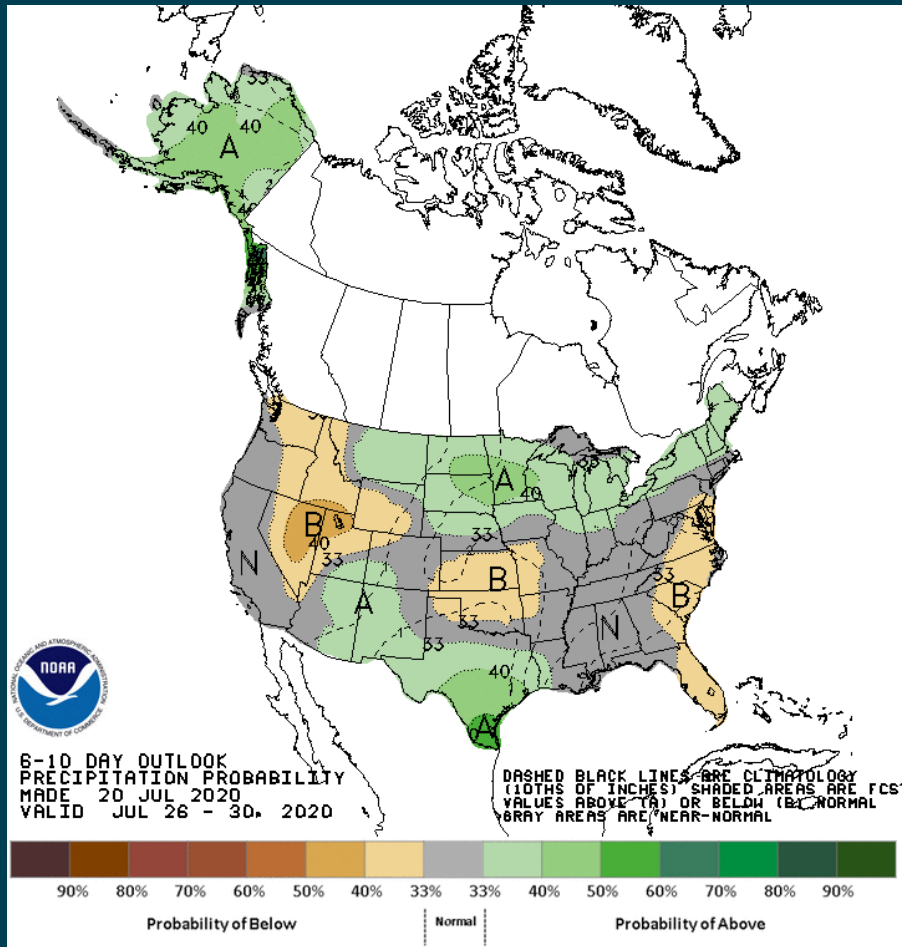


# 6-10 Day Outlook - Temperature





# 6-10 Day Outlook - Precipitation



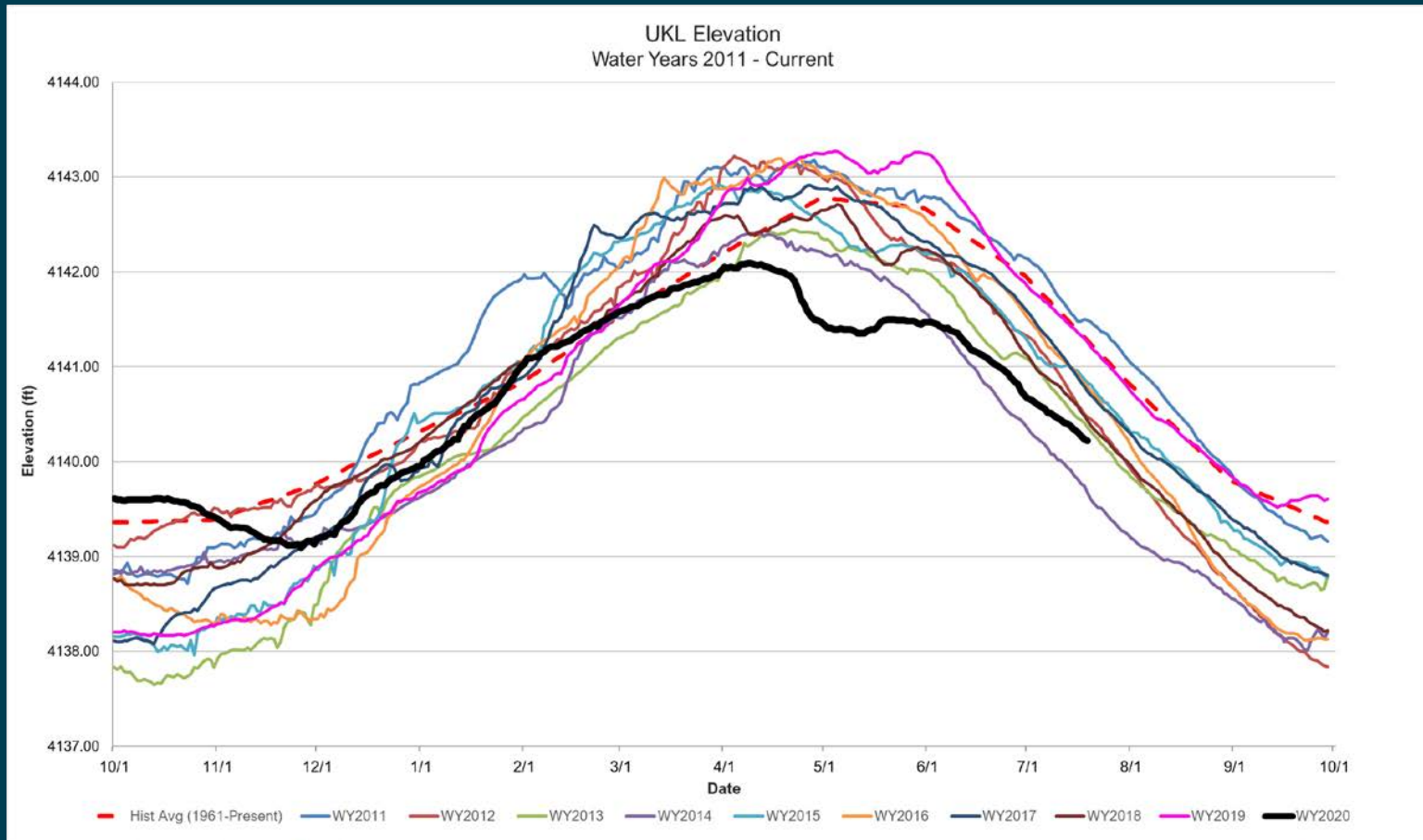
# NRCS Klamath Basin Inflow Forecast for June 1, 2020

- June 1 is the last forecast update for the season

| Month                              | Forecast Period | 70% Exceedance<br>in Acre-Feet<br>(drier) | 50% Exceedance<br>in Acre-Feet | 30% Exceedance<br>in Acre-Feet<br>(wetter) | 30-Year Average<br>in Acre-Feet |
|------------------------------------|-----------------|---|--------------------------------|--|---------------------------------|
| Gerber Reservoir<br>Inflow         | June-September  | 0   | 120                            | 540  | 1,780                           |
| Williamson River<br>near Chiloquin | June-September  | 90,000                                    | 101,000                        | 112,000                                    | 149,000                         |
| Upper Klamath Lake<br>Inflow       | June-September  | 61,000                                    | 82,000                         | 102,000                                    | 165,000                         |

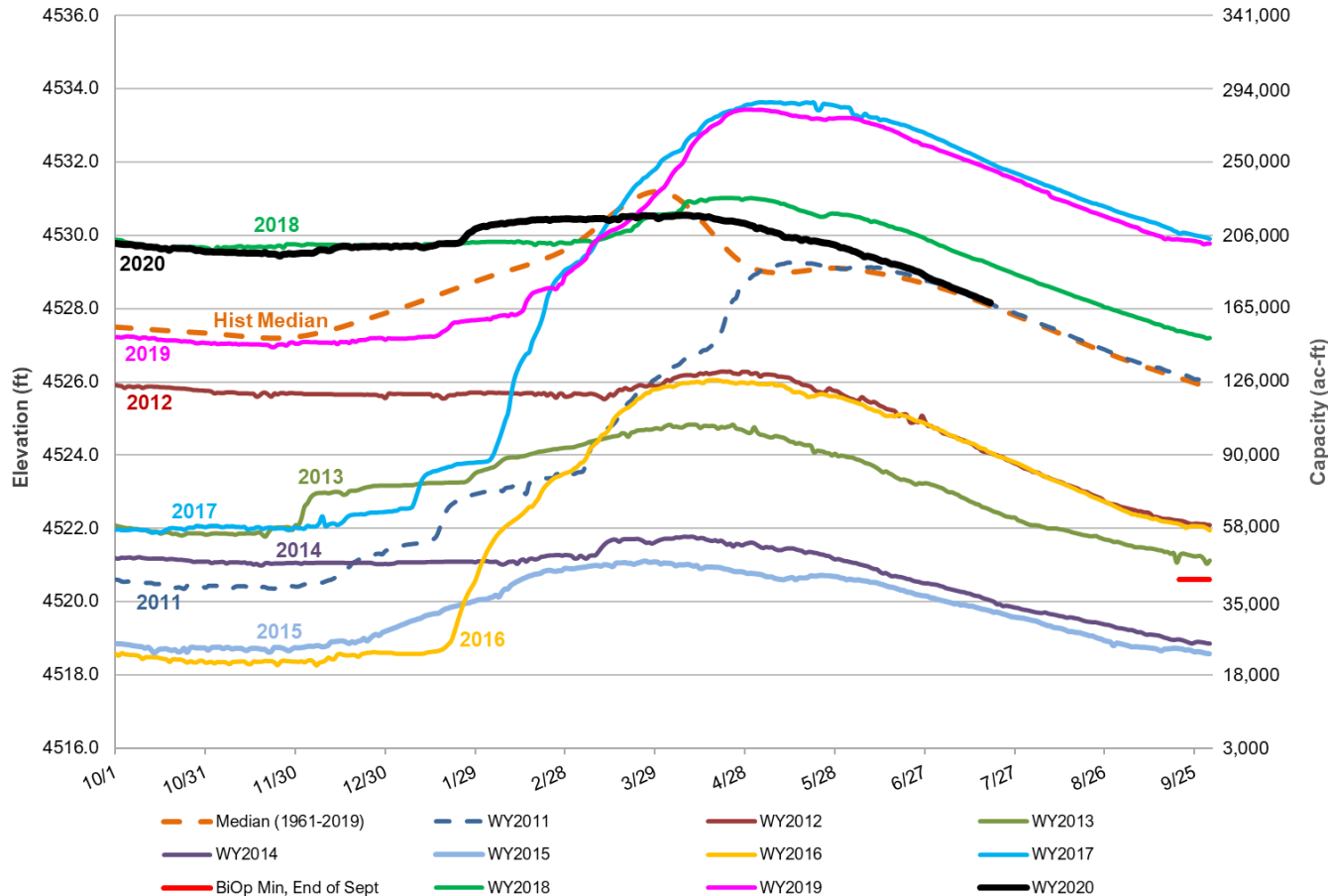


# Upper Klamath Lake Elevation



# Clear Lake Reservoir Elevation

Clear Lake Elevation  
Water Years 2011 - Current



# Gerber Reservoir Elevation

