

# RECLAMATION

*Managing Water in the West*

## Klamath Project 2018 Hydrologic Update Meeting

March 9, 2018

Jeff Nettleton

Area Manager, Klamath Basin Area Office



U.S. Department of the Interior  
Bureau of Reclamation

# Overview

1. Welcome, Introductions, and Opening Statements
2. Current Water Conditions
3. Key Components for 2018 Water Management
4. Current and Planned Efforts/Activities and Timing
5. Klamath Water Users Association (KWUA)
6. Anticipated Next Steps and Future Updates
7. Question/Answer Session
8. Closing & Adjourn

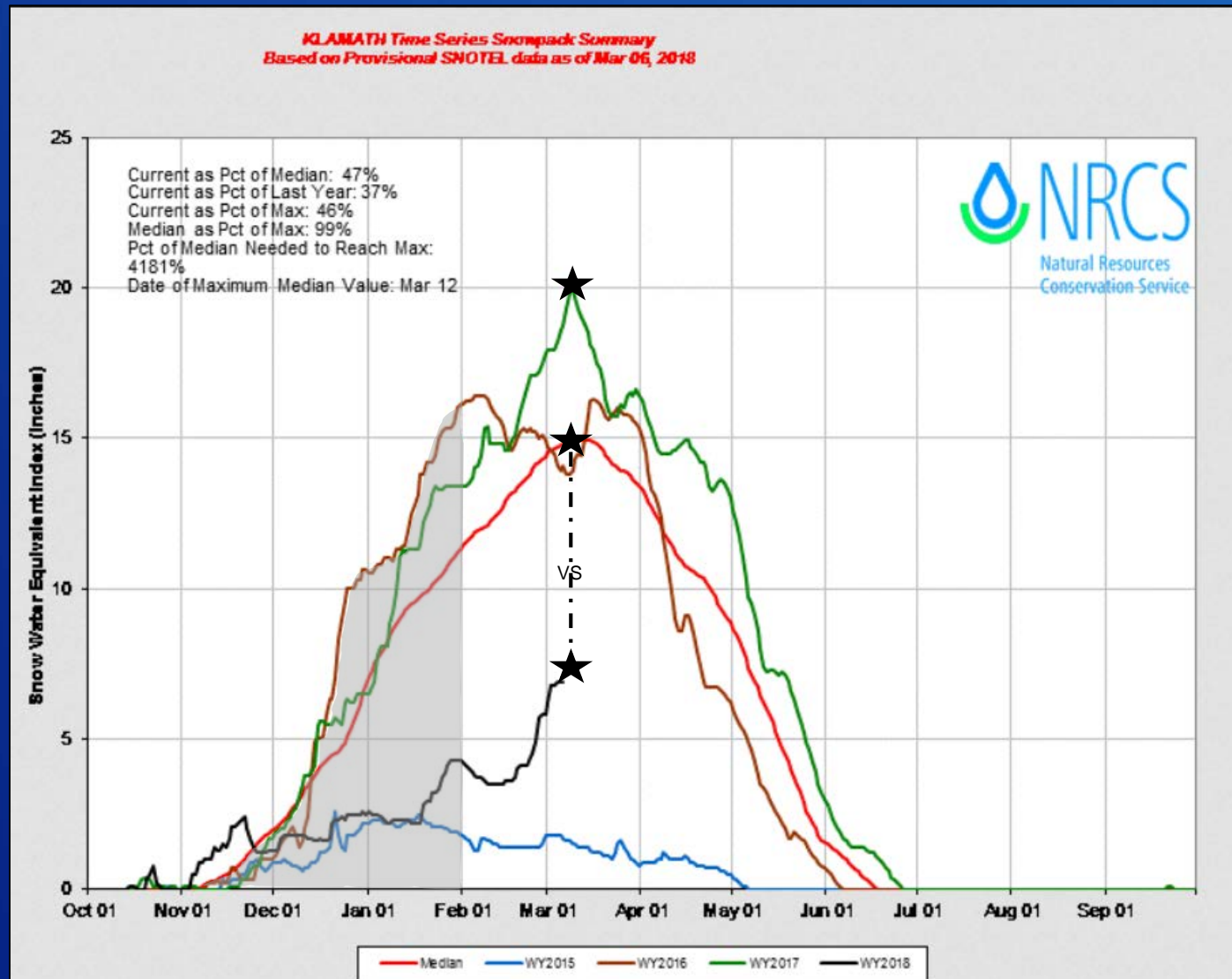
RECLAMATION

# Welcome & Introductions / Opening Statements

- **Klamath County**
  - Donnie Boyd, Commissioner
- **Bureau of Reclamation**
  - Jeff Nettleton, Area Manager
  - Ali Forsythe, Mid-Pacific Deputy Regional Director
- **U.S. Fish and Wildlife Service**
  - Laurie Sada, Field Supervisor
  - Greg Austin, Refuge Project Leader
  - Paul Souza, Pacific Southwest Regional Director
- **National Marine Fisheries Service**
  - Jim Simondet, Klamath Branch Supervisor, California Coastal Office
- **Klamath Water Users Association**
  - Scott White, Executive Director

RECLAMATION

# Snowpack and Precipitation To Date

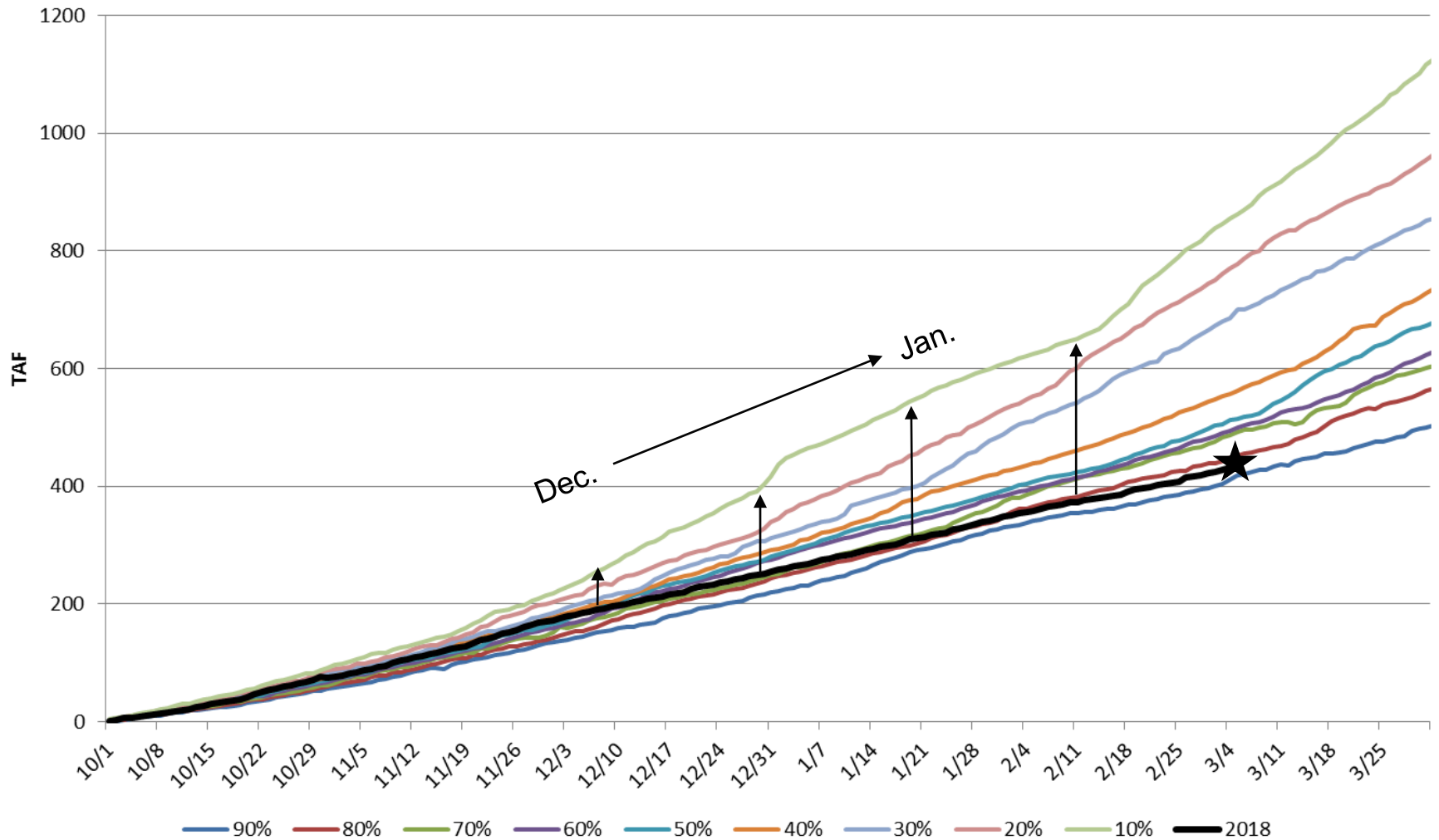


47% of  
median  
snowpack  
and 74% of  
water year  
to date  
precipitation

RECLAMATION

# Current Water Conditions

Cumulative Inflow by Exceedances

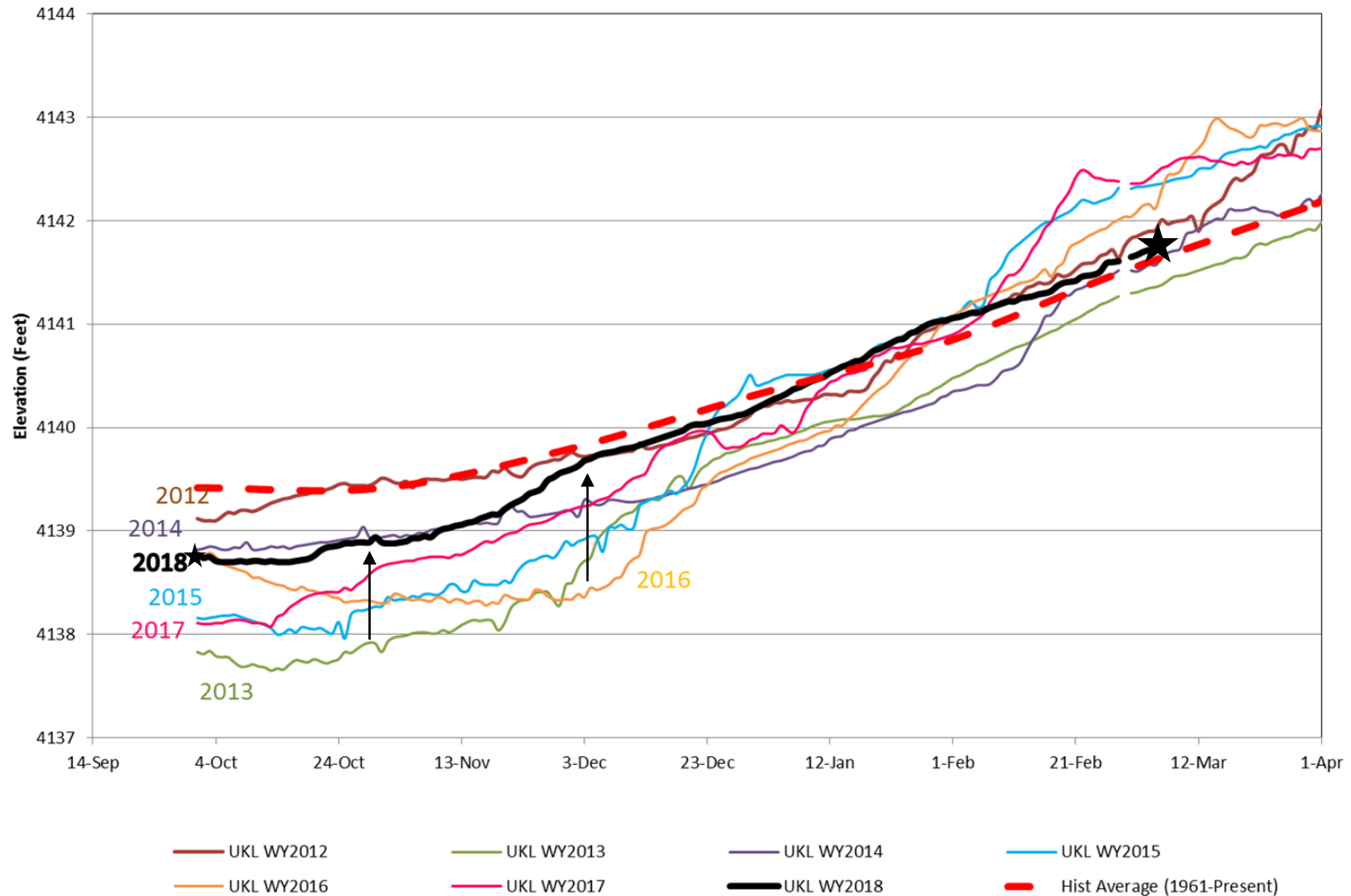


RECLAMATION



# Current Water Conditions

## UKL Elevations



# RECLAMATION

# NRCS Inflow Forecast - Upper Klamath Lake

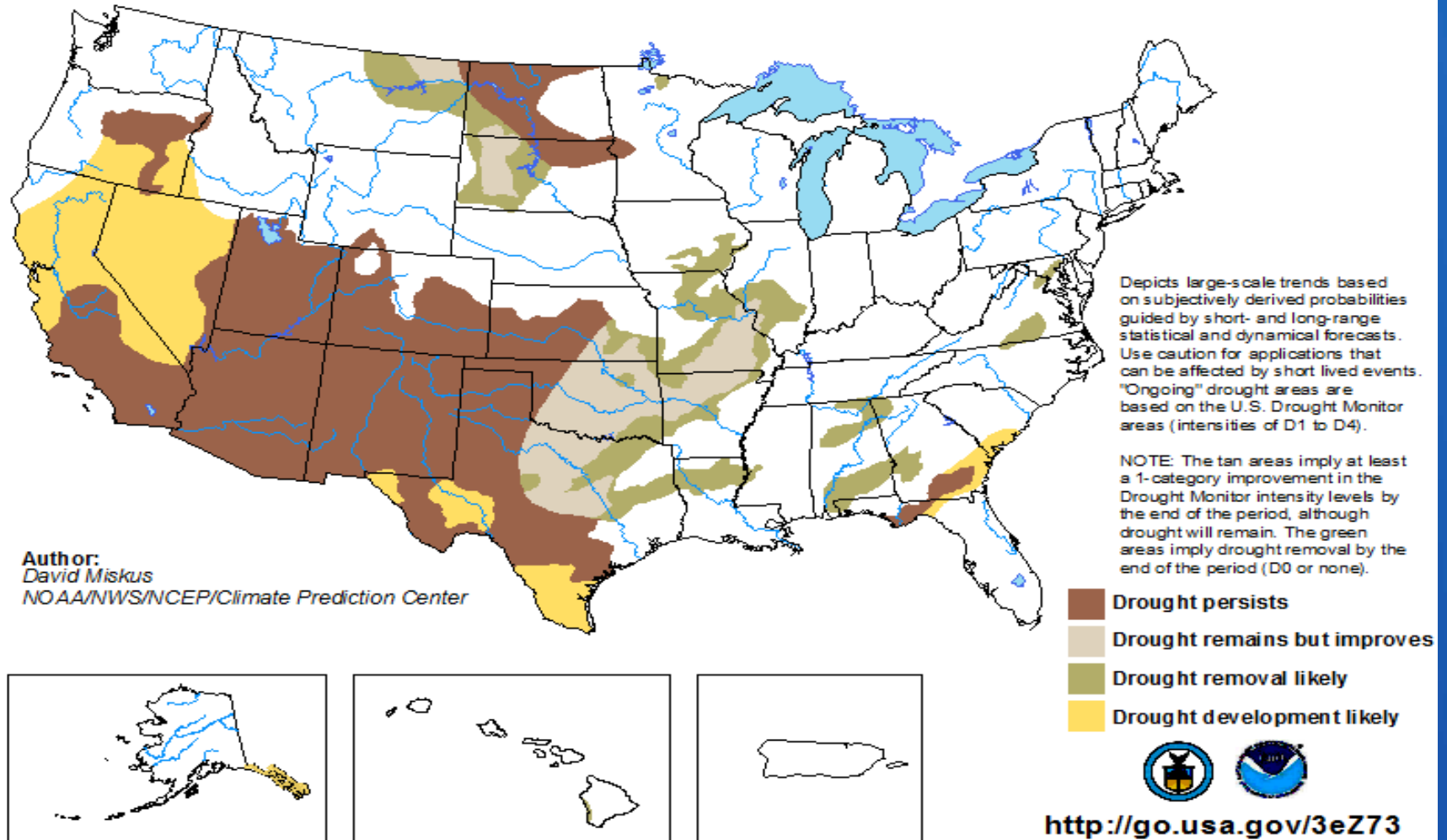
NRCS Update	Forecast	Forecasted Inflow	
	Period	(TAF)	% of historical avg
1-Jan	Apr-Sept	335	70
Mid-Jan	Apr-Sept	280	58
1-Feb	Apr-Sept	270	56
Mid-Feb	Apr-Sept	230	48
1-Mar	<b>Mar-Sept</b>	355	54
1-Mar	<b>Apr-Sept</b>	255	53

RECLAMATION

# Current Water Conditions

## **U.S. Seasonal Drought Outlook** Drought Tendency During the Valid Period

Valid for February 15 - May 31, 2018  
Released February 15, 2018

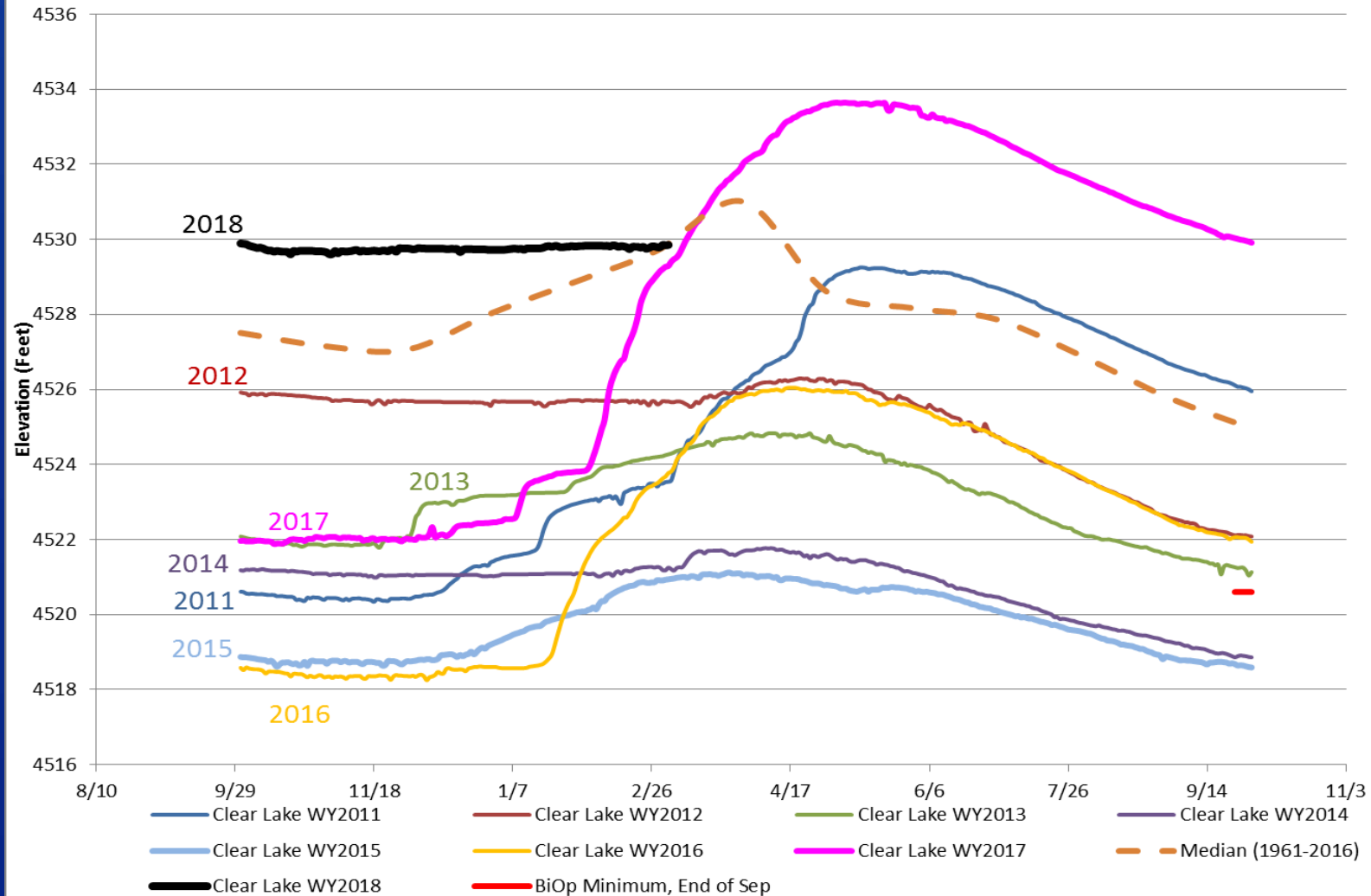


# RECLAMATION



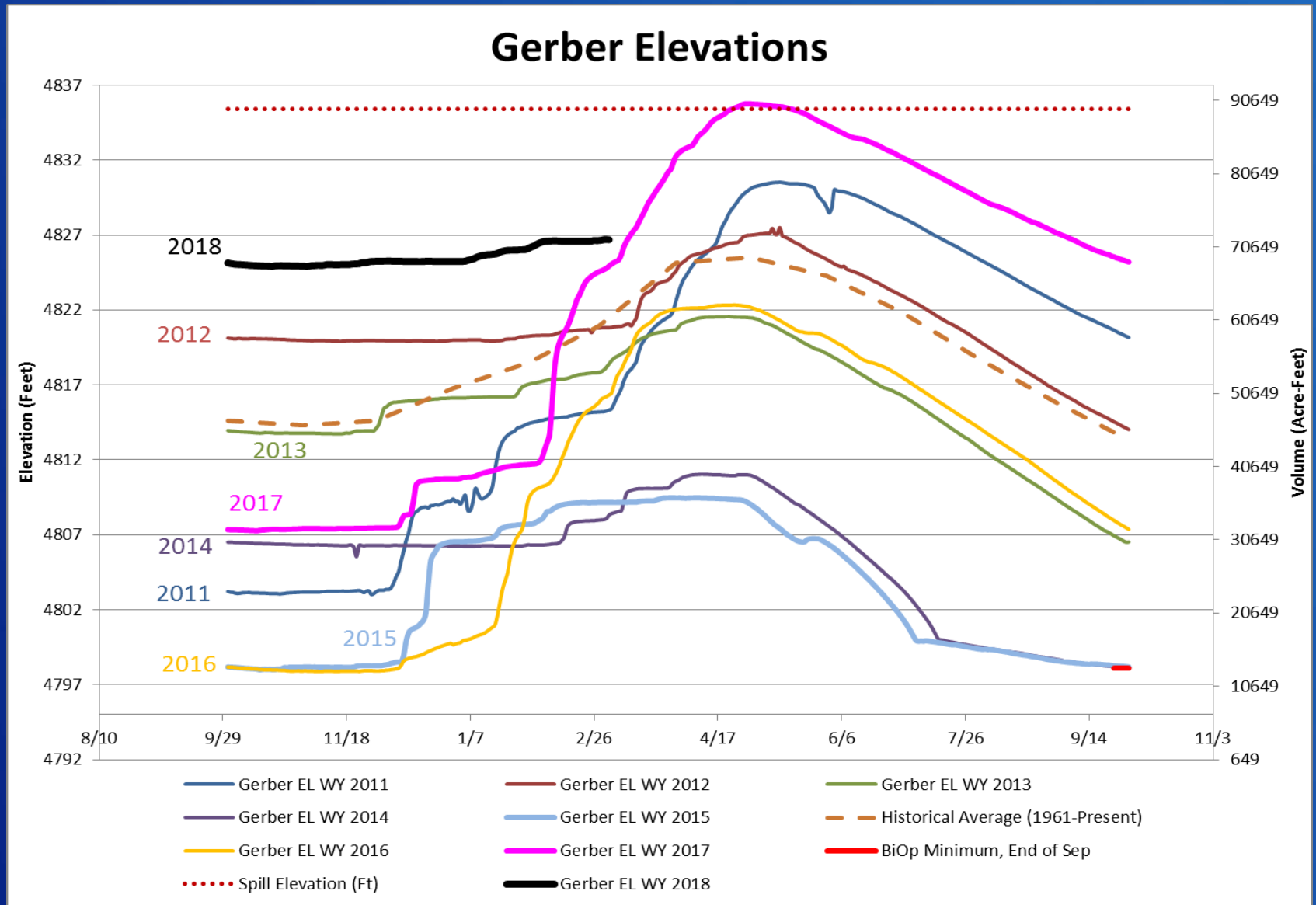
# Current Water Conditions

## Clear Lake Elevations



RECLAMATION

# Current Water Conditions



RECLAMATION

# 2018 Water Operation Considerations

The communities of the Klamath River Basin are faced with a very difficult water year due to less than average snowpack, precipitation, and inflow into Project reservoirs. As a result, there are more competing water demands than available in supply.

- 2018 challenges include competing water demands for:
  - The Klamath Project and associated agricultural businesses
  - Tule Lake/Lower Klamath National Wildlife Refuges for fish and wildlife benefits
  - Upper Klamath Lake for biological needs of Lost River and shortnose suckers
  - Klamath River for biological needs of coho salmon

RECLAMATION

# Current and Planned Efforts/Activities and Timing

## March-April:

- Continue to refine the hydrologic model based on revised NRCS inflow forecasts and incoming weather events
  - Upcoming:
    - Mid-March NRCS Forecast
    - April 1 NRCS Forecast

## April-June:

- Continue coordination and collaboration with:
  - Klamath Project Districts, KWUA, Klamath County et al.
    - revised hydrologic forecasts, Project allocation, and start dates
  - USFWS, NMFS, KWUA, Tribes, et al.
    - relative to Klamath River and UKL management

RECLAMATION

# Next Steps and Future Updates

- Reclamation will provide updates via public meetings, email, and on the KBAO website:  
<https://www.usbr.gov/mp/kbao/>
  - Anticipated next meeting week of March 19
  - Please provide current phone number and email address at the sign-in desk for future notifications
- For those within an irrigation/drainage district please work with your District Managers as a first line of communication
- Reclamation will coordinate closely with the Klamath Water Users Association on changing water conditions
- For those with individual contracts with Reclamation please call the Klamath Basin Area Office 541-883-6935

RECLAMATION

# Question/Answer



RECLAMATION



# Closing Statements and Adjourn

- If the Upper Klamath Basin had received more normal snowpack and precipitation in December and January, it is likely Project deliveries would be sufficient to fully meet irrigation needs within the Klamath Project. Heavy spring moisture could help ease current conditions some.
- Any limitations on the available irrigation supplies for the Klamath Project in 2018, and/or delays in irrigation start dates, are the result of additional demands on the available water supply associated with developing drought conditions.

RECLAMATION

# Thank You



Photo Credit: USFWS

# RECLAMATION