

Northern CVP Water Temperature Report

December - 2019

Page	Description
1	- Mean Daily Water Temperature, Release Flow Rates and Air Temperatures with Monthly Averages
2	- Redding 10-Day Forecasted Air Temperatures
3	- Sacramento River Mean Daily Water Temperature, Air Temperature and 10-Day Forecasted Air Temperature Plot - Water Temperature Measuring Station Details - Temperature Control Point Details
4	- Shasta Lake Isothermobaths Plot
5	- Trinity Lake Isothermobaths Plot
6	- Whiskeytown Lake Isothermobaths Plot
x	- TCD Configuration (External Link)



All Data in this Report is Preliminary and Subject to Change

DATE	Mean Daily Water Temperatures (°F)													Mean Daily Release (CFS)			Mean Daily Air Temperatures (°F)				
	TCD ¹	SHD	SPP ¹	KWK	SAC	CCR	BSF ²	JLF	BND	RDB	IGO	LWS	NFH	Shasta Generation	Spring Creek P.P.	Keswick Total	RDD	BSF	RDB	LWS	
Nov	52.1	51.3	53.4	51.4	51.7	51.9	51.8	52.0	52.0	51.8	52.1	44.5	45.7	4479	323	5142	56.4	51.9	54.1	-	
12/01	52.8	52.0	52.1	51.2	51.1	50.8	50.0	49.7	49.5	48.9	48.9	?	41.6	41.0	4407	217	5016	41.0	41.6	41.3	-
12/02	53.0	52.0	51.9	51.1	51.3	51.2	50.5	50.3	50.2	49.7	49.4	42.7	42.3	4011	854	5061	48.5	48.4	48.6	-	
12/03	52.8	51.9	52.1	51.5	51.7	51.9	?	51.5	51.4	51.4	51.0	50.0	43.5	44.2	4434	65	5017	56.5	51.5	54.3	-
12/04	52.5	51.7	52.0	51.7	51.8	51.8	?	51.7	51.7	51.8	51.7	49.6	44.0	44.8	4361	37	5034	50.0	49.8	50.2	-
12/05	52.6	51.6	51.8	51.8	52.0	52.0	52.2	52.3	52.4	52.1	49.8	44.5	45.5	4383	22	5037	53.5	52.0	52.8	-	
12/06	52.4	51.7	#	-	51.7	51.9	52.0	52.2	52.5	52.6	52.6	50.9	44.6	46.1	4725	0	5033	53.5	53.2	54.8	-
12/07	52.2	51.5	#	-	51.7	52.2	52.2	52.6	52.9	53.1	53.0	51.1	44.4	45.4	4352	0	5034	54.5	56.8	56.4	-
12/08	52.5	51.8	#	-	51.8	52.2	52.2	52.7	52.8	53.0	53.1	51.1	45.1	45.9	3933	0	5037	51.0	53.9	54.7	-
12/09	52.6	51.7	#	-	51.5	51.8	51.7	51.4	51.4	51.5	51.9	49.9	45.3	46.0	4442	0	5036	49.0	44.5	48.8	-
12/10	52.0	51.3	#	-	51.5	51.5	51.3	50.9	50.7	50.8	50.7	49.7	45.1	45.4	4909	0	5037	45.0	45.0	47.0	-
12/11	51.8	51.1	#	-	51.6	51.6	51.5	51.4	51.4	51.6	51.1	50.2	45.2	45.4	4491	0	5033	49.5	49.7	50.5	-
12/12	51.9	51.1	#	-	51.5	51.6	51.6	51.5	51.7	51.9	51.6	50.7	45.7	45.9	4133	0	5033	53.0	52.6	52.8	-
12/13	51.8	51.1	#	-	51.4	51.5	51.5	51.9	52.2	52.5	52.1	50.6	45.7	46.0	3960	0	5032	52.5	53.5	54.1	-
12/14	51.7	51.0	#	-	51.3	51.3	51.3	51.4	51.6	51.9	51.8	49.9	45.0	45.0	2943	0	5053	47.0	47.4	48.5	-
12/15	52.0	51.1	#	-	51.1	50.9	50.7	50.2	50.0	50.2	50.3	49.0	44.4	44.0	4609	0	5122	42.5	39.7	42.7	-
12/16	51.9	51.0	#	-	50.8	50.7	50.4	49.6	49.2	49.2	48.9	48.9	43.8	43.9	5250	0	5058	45.0	39.8	43.1	-
12/17	51.6	50.7	#	-	50.7	50.4	50.1	49.2	48.7	48.7	48.2	48.7	43.6	42.1	4611	0	4963	42.5	38.0	40.0	-
12/18	51.5	50.7	#	-	50.6	50.4	50.0	49.0	48.5	48.5	47.8	48.9	43.6	42.1	4627	0	5019	38.0	38.6	40.0	-
12/19	53.1	51.8	51.4	50.5	50.5	50.3	49.6	49.5	49.5	48.7	49.5	44.0	43.4	3984	17	5097	46.0	45.5	46.3	-	
12/20	53.7	52.8	51.2	50.7	50.6	50.5	50.0	50.0	50.2	49.7	49.8	44.9	44.6	4724	37	5122	49.0	48.3	49.4	-	
12/21	53.5	52.8	50.2	51.9	51.5	51.1	50.4	50.3	50.4	50.0	49.5	45.0	45.4	5745	419	7017	46.5	43.8	45.5	-	
12/22	53.4	52.6	50.1	52.4	52.0	51.7	51.0	50.8	50.8	50.0	48.8	44.4	44.7	5862	437	7060	45.0	44.9	46.0	-	
12/23	53.3	52.6	50.0	52.2	52.0	51.8	50.7	50.5	50.7	50.3	48.1	43.4	43.7	5597	436	7055	45.0	44.4	45.5	-	
12/24	53.3	52.4	49.8	51.9	51.7	51.3	50.3	49.8	50.0	49.5	48.1	43.5	42.6	6086	439	7063	39.0	39.5	40.8	-	
12/25	53.0	?	52.3	49.7	52.0	51.7	51.4	50.7	50.4	50.5	49.8	48.5	43.7	42.7	5686	524	7004	41.0	41.9	42.8	-
12/26	53.1	?	52.1	49.6	51.8	51.6	51.4	50.3	49.8	49.8	49.3	48.0	42.7	42.6	5608	460	6951	49.0	41.5	44.8	-
12/27	52.9	52.0	49.2	51.4	51.3	51.1	50.2	49.6	49.6	49.0	47.6	42.5	41.7	5154	1330	6979	48.0	41.6	46.0	-	
12/28	52.7	?	51.8	49.0	51.2	51.1	51.0	50.3	49.8	49.9	49.2	47.9	42.7	41.5	4635	1340	6928	53.5	45.7	47.7	-
12/29	52.6	?	51.7	49.0	51.2	51.1	50.9	50.5	50.3	50.5	50.0	48.2	43.2	41.9	5076	1343	6086	47.0	45.5	46.0	-
12/30	52.5	51.7	48.9	51.1	51.1	51.0	50.5	50.3	50.3	49.9	48.0	43.4	43.1	4165	1309	5801	51.0	48.4	50.3	-	
12/31	52.4	51.6	48.8	50.9	51.0	51.0	50.7	50.5	50.6	50.1	48.3	43.4	43.4	3924	1323	5595	59.0	52.4	52.8	-	
Dec	52.5	51.7	50.4	51.4	51.4	51.3	50.8	50.7	50.8	50.4	49.3	44.0	44.0	4672	342	5626	48.1	46.4	47.9	-	

Total CFS	144827	10609	174413
Total AF	287258	21043	345941

Legend

- ? = 1-9 hours of data missing (Average includes estimations)
- ! = 10 or more hours of data missing (Average not calculated)
- # = Station out of service
- ↑ = Record high air temperature
- ↓ = Record low air temperature
- = Monthly Averages

Notes

- ¹ Temperatures are weighted averages based on individual penstock flow and temperature
- Highlighted cells in the TCD column indicate a TCD change was made on that day
- ² Current control point (see page 3 for more details)
- ³ NFH is only reported in October, November and December

DATE	Redding (RDD) Daily Air Temperatures (°F)																																			
	Actual			Forecasted																																
	Previous Day			Current Day			1 Day			2 Days			3 Days			4 Days			5 Days			6 Days			7 Days			8 Days			9 Days			10 Days		
	↓	↑	Avg	↓	↑	Avg	↓	↑	Avg	↓	↑	Avg	↓	↑	Avg	↓	↑	Avg	↓	↑	Avg	↓	↑	Avg	↓	↑	Avg	↓	↑	Avg	↓	↑	Avg	↓	↑	Avg
12/01	35	45	40.0	37	48	42.5	44	52	48.0	44	59	51.5	42	58	50.0	40	55	47.5	46	54	50.0	43	54	48.5	40	58	49.0	38	57	47.5	38	58	48.0	37	57	47.0
12/02	37	45	41.0	46	52	49.0	44	60	52.0	42	58	50.0	42	55	48.5	44	55	49.5	40	55	47.5	35	58	46.5	38	61	49.5	41	60	50.5	39	57	48.0	37	56	46.5
12/03	45	52	48.5	47	60	53.5	39	59	49.0	40	55	47.5	45	55	50.0	45	54	49.5	37	57	47.0	34	58	46.0	39	62	50.5	41	62	51.5	41	62	51.5	41	61	51.0
12/04	47	66	56.5	45	58	51.5	43	57	50.0	43	56	49.5	44	57	50.5	41	57	49.0	35	59	47.0	34	57	45.5	39	63	51.0	38	62	50.0	41	60	50.5	39	61	50.0
12/05	44	56	50.0	50	57	53.5	43	56	49.5	50	57	53.5	43	57	50.0	35	60	47.5	37	58	47.5	38	60	49.0	41	62	51.5	38	62	50.0	42	62	52.0	39	58	48.5
12/06	50	57	53.5	48	56	52.0	53	57	55.0	44	58	51.0	34	61	47.5	33	58	45.5	38	60	49.0	40	60	50.0	39	59	49.0	40	58	49.0	39	58	48.5	35	56	45.5
12/07	50	57	53.5	55	57	56.0	46	57	51.5	37	59	48.0	37	56	46.5	41	59	50.0	40	58	49.0	41	60	50.5	43	61	52.0	40	59	49.5	35	58	46.5	36	59	47.5
12/08	52	57	54.5	53	58	55.5	40	59	49.5	38	55	46.5	42	58	50.0	43	57	50.0	42	58	50.0	41	58	49.5	43	62	52.5	38	60	49.0	36	57	46.5	38	54	46.0
12/09	43	59	51.0	38	60	49.0	38	55	46.5	41	56	48.5	43	56	49.5	45	58	51.5	44	54	49.0	37	53	45.0	35	60	47.5	32	58	45.0	35	55	45.0	36	53	44.5
12/10	37	61	49.0	37	54	45.5	42	54	48.0	45	57	51.0	45	59	52.0	39	55	47.0	32	56	44.0	31	56	43.5	36	55	45.5	39	54	46.5	38	55	46.5	37	52	44.5
12/11	36	54	45.0	48	55	51.5	45	59	52.0	45	58	51.5	38	56	47.0	32	54	43.0	32	55	43.5	35	53	44.0	41	53	47.0	41	56	48.5	40	53	46.5	39	55	47.0
12/12	48	51	49.5	51	60	55.5	45	58	51.5	37	55	46.0	32	55	43.5	31	56	43.5	34	54	44.0	36	52	44.0	40	52	46.0	41	56	48.5	42	56	49.0	41	56	48.5
12/13	51	55	53.0	50	57	53.5	39	56	47.5	33	53	43.0	30	57	43.5	31	55	43.0	35	53	44.0	37	54	45.5	41	55	48.0	42	54	48.0	36	55	45.5	39	57	48.0
12/14	49	56	52.5	41	55	48.0	33	53	43.0	32	57	44.5	35	54	44.5	36	51	43.5	38	53	45.5	42	55	48.5	44	53	48.5	39	54	46.5	37	58	47.5	38	59	48.5
12/15	38	56	47.0	33	53	43.0	33	56	44.5	34	53	43.5	35	51	43.0	38	50	44.0	42	54	48.0	41	51	46.0	36	55	45.5	35	56	45.5	36	55	45.5	35	53	44.0
12/16	32	53	42.5	31	56	43.5	32	51	41.5	34	51	42.5	38	50	44.0	42	55	48.5	40	53	46.5	41	53	47.0	42	56	49.0	38	56	47.0	38	56	47.0	38	54	46.0
12/17	31	59	45.0	33	52	42.5	33	47	40.0	37	50	43.5	41	55	48.0	41	54	47.5	40	51	45.5	38	52	45.0	38	56	47.0	39	53	46.0	37	56	46.5	38	55	46.5
12/18	32	53	42.5	32	46	39.0	38	51	44.5	44	56	50.0	43	53	48.0	41	52	46.5	38	52	45.0	35	51	43.0	36	54	45.0	38	56	47.0	37	57	47.0	39	57	48.0
12/19	32	44	38.0	43	52	47.5	42	57	49.5	42	55	48.5	40	52	46.0	36	52	44.0	33	50	41.5	35	49	42.0	40	55	47.5	42	54	48.0	37	56	46.5	35	62	48.5
12/20	44	48	46.0	47	55	51.0	42	54	48.0	39	49	44.0	36	52	44.0	32	50	41.0	36	49	42.5	35	49	42.0	37	55	46.0	41	51	46.0	36	53	44.5	36	59	47.5
12/21	45	53	49.0	41	56	48.5	40	51	45.5	34	54	44.0	30	49	39.5	34	47	40.5	34	52	43.0	35	53	44.0	37	58	47.5	41	57	49.0	39	60	49.5	41	60	50.5
12/22	41	52	46.5	41	52	46.5	32	54	43.0	29	49	39.0	36	47	41.5	30	53	41.5	32	55	43.5	33	54	43.5	37	59	48.0	39	63	51.0	43	65	54.0	40	63	51.5
12/23	40	50	45.0	38	54	46.0	30	47	38.5	36	47	41.5	32	54	43.0	33	57	45.0	32	57	44.5	32	53	42.5	36	54	45.0	39	61	50.0	40	62	51.0	42	62	52.0
12/24	34	56	45.0	NR	48	NR	36	47	41.5	31	53	42.0	33	56	44.5	32	56	44.0	34	52	43.0	34	58	46.0	42	56	49.0	39	64	51.5	46	63	54.5	45	58	51.5
12/25	30	48	39.0	NR	47	NR	31	54	42.5	32	55	43.5	32	53	42.5	35	54	44.5	35	58	46.5	37	59	48.0	39	60	49.5	43	63	53.0	41	61	51.0	41	60	50.5
12/26	38	44	41.0	NR	56	NR	29	56	42.5	32	58	45.0	34	52	43.0	35	58	46.5	36	62	49.0	38	59	48.5	44	64	54.0	37	60	48.5	38	58	48.0	38	62	50.0
12/27	41	57	49.0	NR	56	NR	33	58	45.5	35	50	42.5	34	58	46.0	36	61	48.5	38	61	49.5	39	61	50.0	40	64	52.0	44	60	52.0	40	58	49.0	38	52	45.0
12/28	37	59	48.0	42	60	51.0	36	48	42.0	35	58	46.5	36	60	48.0	37	57	47.0	41	59	50.0	41	53	47.0	37	56	46.5	34	57	45.5	35	52	43.5	37	53	45.0
12/29	41	66	53.5	42	54	48.0	35	59	47.0	38	61	49.5	39	58	48.5	39	58	48.5	40	55	47.5	38	54	46.0	42	61	51.5	36	62	49.0	40	63	51.5	39	61	50.0
12/30	42	52	47.0	38	60	49.0	41	62	51.5	41	57	49.0	39	59	49.0	40	60	50.0	40	57	48.5	37	57	47.0	39	60	49.5	35	61	48.0	36	56	46.0	36	54	45.0
12/31	37	65	51.0	53	63	58.0	40	58	49.0	39	60	49.5	40	60	50.0	40	55	47.5	36	56	46.0	34	58	46.0	36	62	49.0	36	54	45.0	35	53	44.0	35	53	44.0

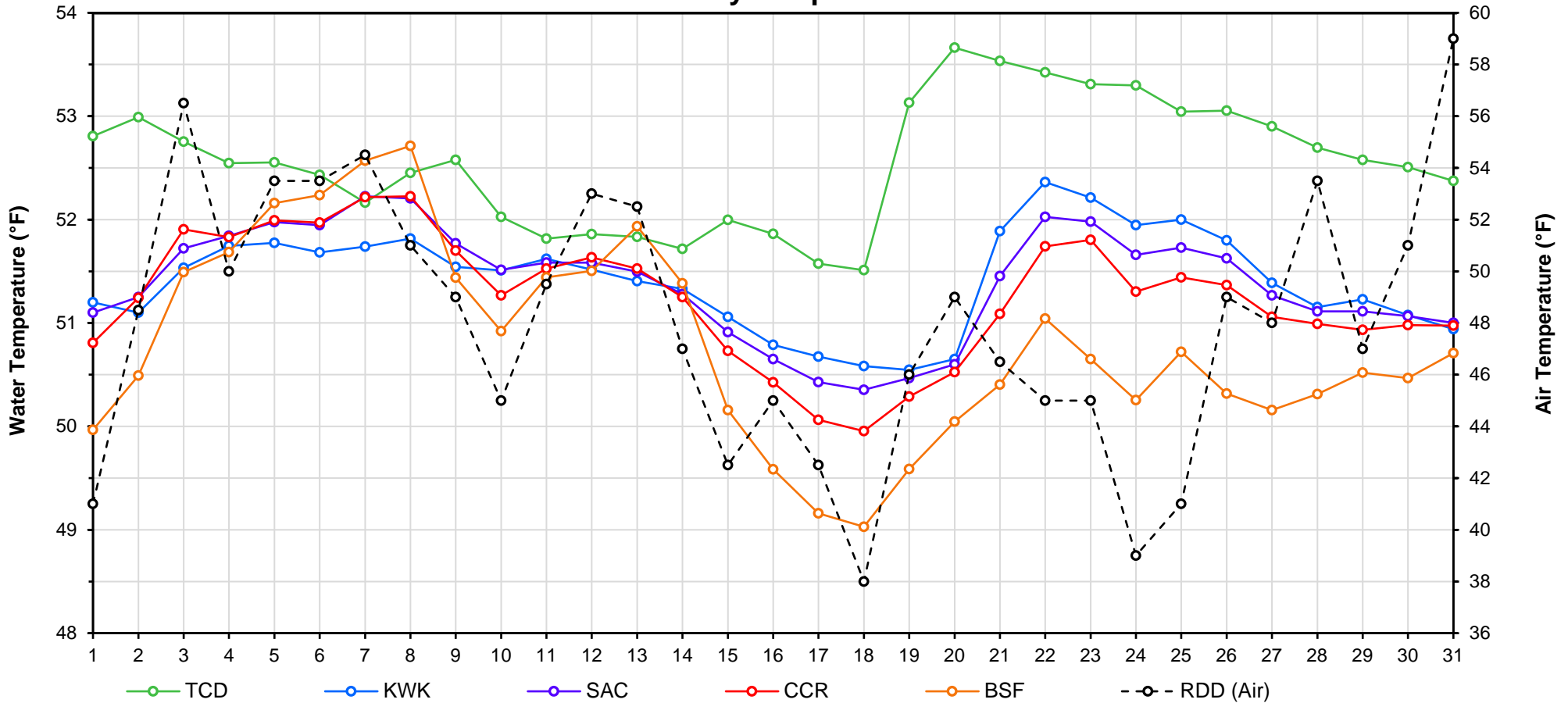
Web Links

- [10-Day Min/Max Forecast](#)
- [Previous Days Min/Max Actuals](#)

Legend

- NR = Forecasted temperatures not recorded
- 100** = Previous day actual temperatures in red and bolded indicate a record temperature for that date

Mean Daily Temperatures



Station Details			
Code	Body of Water	Location ¹	CDEC Link
TCD	N/A	Shasta Power Plant	N/A
SHD	Sacramento River	0.3 miles downstream of Shasta Power Plant	Click Here
SPP	N/A	Spring Creek Power Plant	N/A
KWK	Sacramento River	0.8 miles downstream of Keswick Dam	Click Here
SAC	Sacramento River	4.8 miles downstream of Keswick Dam	Click Here
CCR	Sacramento River	9.7 miles downstream of Keswick Dam	Click Here
BSF	Sacramento River	25 miles downstream of Keswick Dam	Click Here
JLF	Sacramento River	34 miles downstream of Keswick Dam	Click Here
BND	Sacramento River	41 miles downstream of Keswick Dam	Click Here
RDB	Sacramento River	58 miles downstream of Keswick Dam	Click Here
IGO	Clear Creek	7.3 miles downstream of Whiskeytown Dam	Click Here
LWS	Trinity River	1.1 miles downstream of Lewiston Dam	Click Here
DGC ²	Trinity River	19 miles downstream of Lewiston Dam	Click Here
NFH ³	Trinity River	38 miles downstream of Lewiston Dam	Click Here

Temperature Control Point		
Point	Temp. (°F)	Begin Date
BSF	56.0	5/15/2019

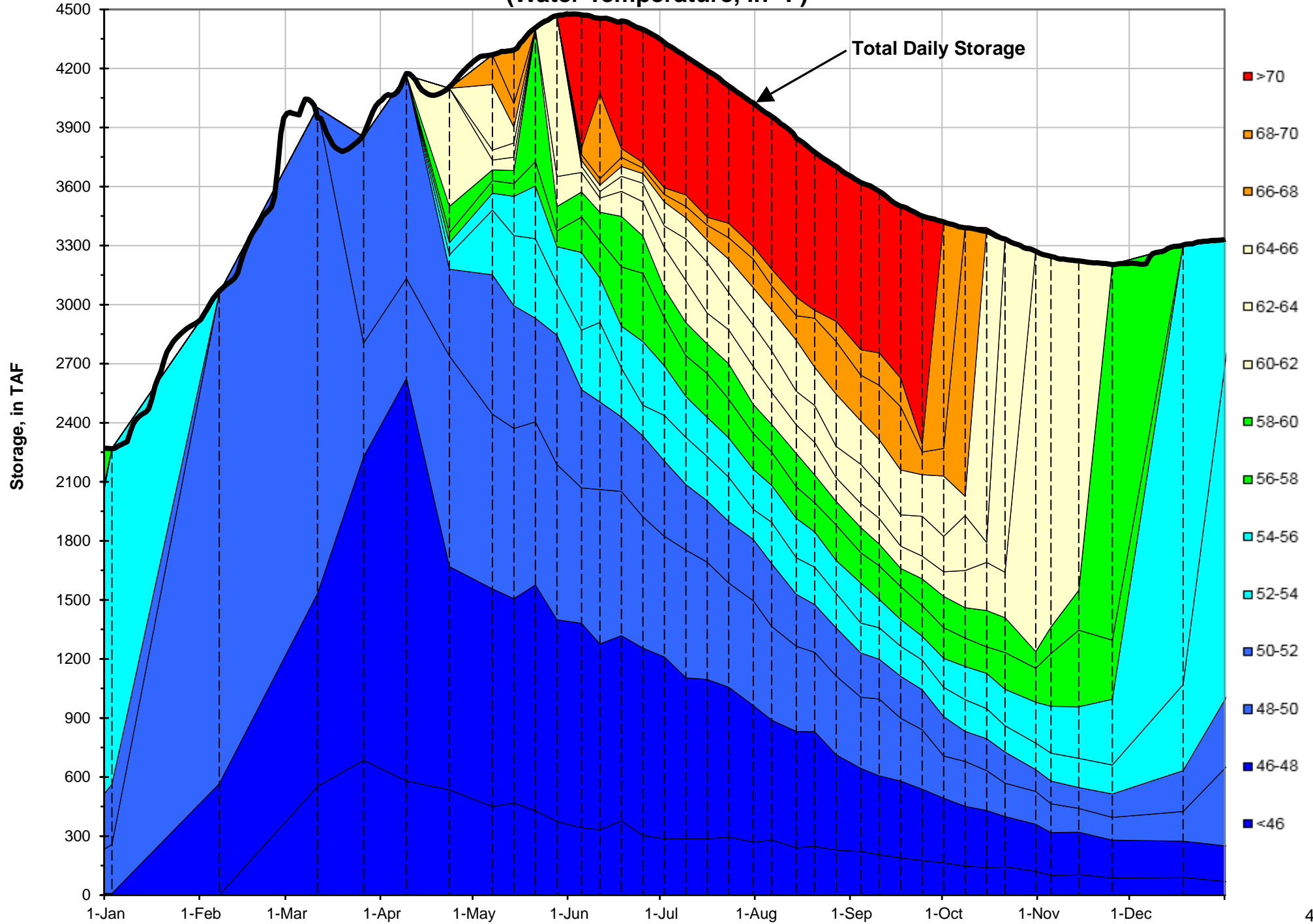
Notes

¹ Distances are approximate

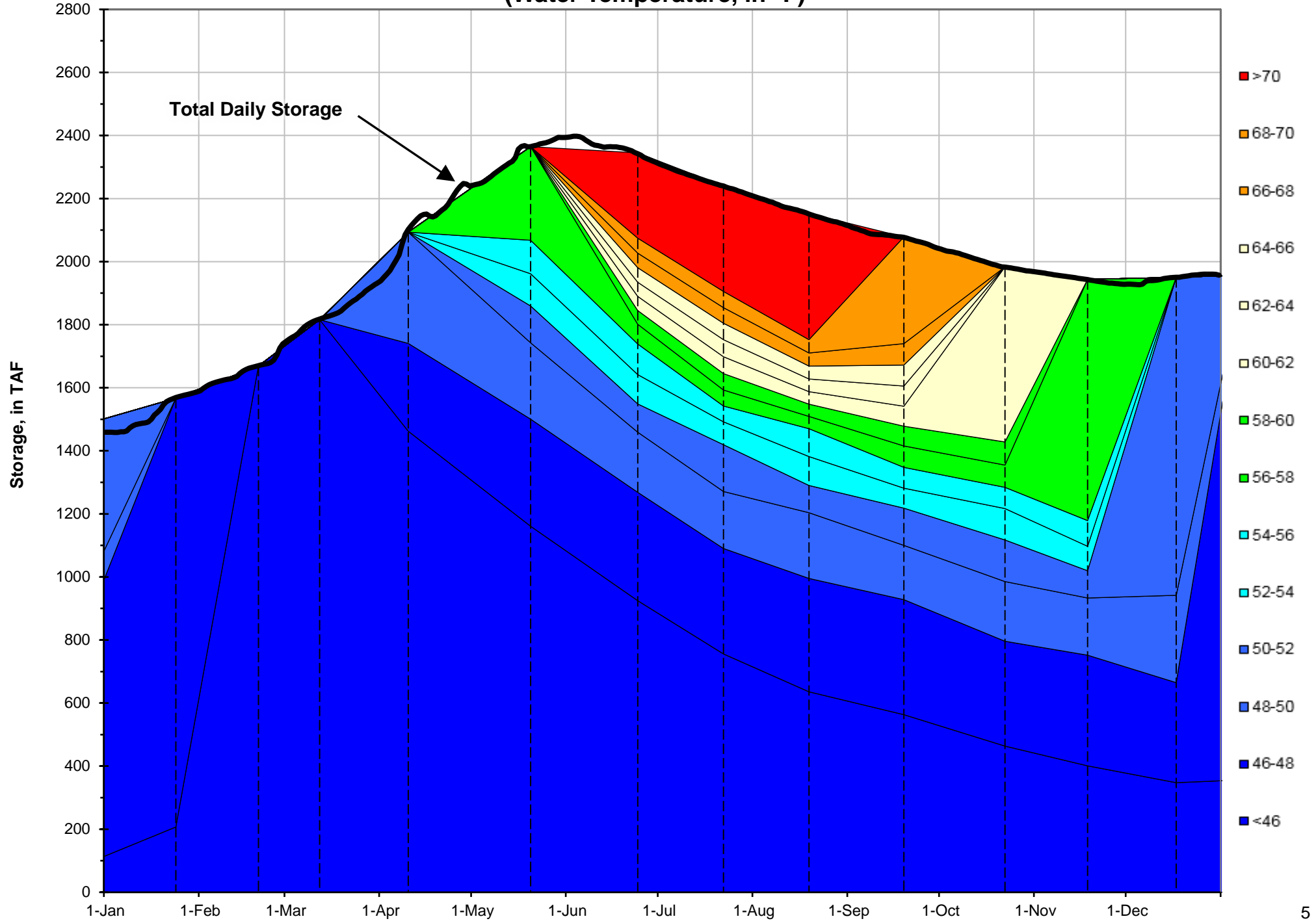
² DGC is only reported in September

³ NFH is only reported in October, November and December

Shasta Lake Isothermobaths - 2019 (Water Temperature, in °F)



Trinity Lake Isothermobaths - 2019 (Water Temperature, in °F)



Whiskeytown Lake Isothermobaths - 2019 (Water Temperature, in °F)

