

Northern CVP Water Temperature Report

December - 2018

| Page | Description |
|------|---|
| 1 | - Mean Daily Water Temperature, Release Flow Rates and Air Temperatures with Monthly Averages |
| 2 | - Redding 10-Day Forecasted Air Temperatures |
| 3 | - Sacramento River Mean Daily Water Temperature, Air Temperature and 10-Day Forecasted Air Temperature Plot - Water Temperature Measuring Station Details - Temperature Control Point Details |
| 4 | - Daily Maximum and 7DADM |
| 5 | - Shasta Lake Isothermobaths Plot |
| 6 | - Trinity Lake Isothermobaths Plot |
| 7 | - Whiskeytown Lake Isothermobaths Plot |
| x | - TCD Configuration (External Link) |



All Data in this Report is Preliminary and Subject to Change

| DATE | Mean Daily Water Temperatures (°F) | | | | | | | | | | | | | Mean Daily Release (CFS) | | | Mean Daily Air Temperatures (°F) | | | | |
|-------|------------------------------------|--------|------------------|------|------|------|------------------|------|--------|------|--------|------|------------------|--------------------------|-------------------|---------------|----------------------------------|------|------|------|---|
| | TCD ¹ | SHD | SPP ¹ | KWK | SAC | CCR | BSF ² | JLF | BND | RDB | IGO | LWS | NFH ³ | Shasta Generation | Spring Creek P.P. | Keswick Total | RDD | BSF | RDB | LWS | |
| Nov | 55.0 | 54.8 | 56.6 | 54.3 | 54.1 | 54.0 | 53.8 | 53.5 | 53.2 | 53.3 | 53.9 | - | 46.2 | 3927 | 299 | 4706 | 55.5 | 51.3 | 53.7 | - | |
| 12/01 | 54.2 | 53.7 | 54.4 | 53.6 | 53.3 | 53.2 | 52.7 | 52.3 | 52.0 | 52.0 | 52.4 | # | - | 45.8 | 3410 | 154 | 3989 | 46.5 | 47.6 | 49.4 | - |
| 12/02 | 54.3 | 53.7 | 54.4 | 53.3 | 52.9 | 52.6 | 51.7 | 51.3 | 51.0 | 51.4 | 51.6 | # | - | 44.5 | 3385 | 224 | 3981 | 43.5 | 39.5 | 43.1 | - |
| 12/03 | 54.4 | 53.9 | 54.0 | 53.1 | 52.7 | 52.4 | ? 51.3 | 50.5 | 50.1 | 50.1 | 51.2 | # | - | 43.6 | 2702 | 433 | 3983 | 43.5 | 38.9 | 42.6 | - |
| 12/04 | 54.1 | 53.6 | 54.7 | 52.9 | 52.6 | 52.5 | ? 51.9 | 51.4 | 50.9 | 50.4 | 52.0 | # | - | 44.0 | 3972 | 73 | 4008 | 50.5 | 50.2 | 50.9 | - |
| 12/05 | 54.2 | 53.7 | 53.9 | 52.9 | 52.6 | 52.6 | ? 52.3 | 52.0 | 51.7 | 51.5 | 52.3 | # | - | 45.0 | 2955 | 687 | 4027 | 50.5 | 46.6 | 48.1 | - |
| 12/06 | 54.0 | ? 53.4 | 54.1 | 53.0 | 52.7 | 52.5 | 51.8 | 51.4 | 51.0 | 51.3 | 51.6 | # | - | 44.3 | 3476 | 145 | 4032 | 49.5 | 43.5 | 47.6 | - |
| 12/07 | 53.9 | 53.2 | 54.0 | 52.8 | 52.4 | 52.2 | 51.4 | 50.9 | 50.5 | 50.6 | 50.9 | # | - | 43.5 | 3890 | 85 | 4031 | 46.0 | 40.1 | 43.9 | - |
| 12/08 | 54.0 | 53.3 | 54.0 | 52.8 | 52.6 | 52.5 | ? 51.8 | 51.2 | 50.7 | 50.6 | 51.5 | # | - | 44.2 | 3153 | 44 | 4029 | 50.0 | 45.4 | 48.0 | - |
| 12/09 | 53.7 | 53.0 | 53.2 | 52.7 | 52.4 | 52.2 | ? 51.5 | 51.1 | 50.7 | 50.8 | 51.4 | # | - | 44.8 | 3998 | 91 | 4028 | 44.0 | 41.7 | 43.6 | - |
| 12/10 | 54.5 | 54.0 | 53.2 | 52.8 | 52.7 | 52.7 | ? 52.3 | 52.0 | 51.5 | 51.3 | ? 51.5 | # | - | 46.4 | 3665 | 58 | 4036 | 51.5 | 49.3 | 51.3 | - |
| 12/11 | 55.6 | 55.1 | 53.0 | 52.7 | 52.4 | 52.3 | 51.7 | 51.3 | 51.0 | 51.3 | 51.0 | # | - | 45.9 | 2655 | 693 | 4026 | 51.5 | 45.3 | 49.4 | - |
| 12/12 | 55.2 | 54.7 | 53.3 | 52.7 | 52.4 | 52.2 | 51.9 | 51.6 | 51.2 | 51.2 | 51.0 | # | - | 45.2 | 3747 | 96 | 4047 | 50.5 | 47.8 | 50.5 | - |
| 12/13 | 55.2 | 54.6 | 52.6 | 53.3 | 52.9 | 52.5 | 51.5 | 50.9 | 50.5 | 50.8 | 50.4 | ! | - | 43.3 | 3431 | 221 | 4029 | 46.5 | 42.5 | 47.5 | - |
| 12/14 | 54.9 | 54.3 | 52.4 | 53.5 | 53.0 | 52.5 | 51.6 | 50.9 | 50.4 | 50.3 | 50.1 | 43.0 | 42.3 | 3807 | 306 | 4048 | 43.5 | 42.8 | 46.1 | 37.4 | |
| 12/15 | 54.8 | 54.2 | 52.3 | 53.5 | 53.1 | 52.8 | 51.6 | 51.3 | 51.0 | 51.0 | 50.2 | 44.1 | 43.2 | 3165 | 216 | 4036 | 46.0 | 45.6 | 46.3 | 39.8 | |
| 12/16 | 54.4 | 53.8 | 51.9 | 53.4 | 52.9 | 52.9 | 52.1 | 52.1 | 51.7 | 51.3 | 50.1 | 44.6 | 44.9 | 3512 | 312 | 4054 | 50.0 | 49.5 | 50.9 | 46.2 | |
| 12/17 | 54.3 | 53.8 | 51.7 | 53.3 | 53.0 | 53.0 | ? 50.9 | 50.8 | 50.7 | 51.3 | 50.1 | 44.9 | 45.2 | 2705 | 696 | 4059 | 50.0 | 50.0 | 51.0 | 43.1 | |
| 12/18 | 54.2 | 53.7 | 51.6 | 53.3 | 53.2 | 53.1 | 52.5 | 52.0 | 51.7 | 51.5 | 50.5 | 45.0 | 45.6 | 3472 | 310 | 4024 | 51.5 | 50.1 | 50.8 | 44.0 | |
| 12/19 | 54.2 | 53.6 | 51.5 | 53.3 | 53.3 | 53.4 | 53.0 | 52.8 | ? 52.6 | 52.7 | 50.6 | 45.2 | 45.5 | 3474 | 264 | 4020 | 53.0 | 50.7 | 53.8 | 44.9 | |
| 12/20 | 54.0 | 53.5 | 51.6 | 53.3 | 53.1 | 53.0 | 52.6 | 52.5 | 52.5 | 52.7 | 50.2 | 45.6 | 45.7 | 3317 | 109 | 4023 | 48.5 | 48.8 | 49.8 | 45.3 | |
| 12/21 | 53.7 | 53.2 | 51.2 | 53.3 | 53.2 | 53.2 | 52.8 | 52.7 | 52.6 | 52.7 | 50.1 | 44.9 | 45.6 | 3449 | 90 | 4029 | 51.5 | 49.3 | 50.8 | 42.1 | |
| 12/22 | 53.8 | 53.3 | 51.3 | 53.0 | 52.6 | 52.4 | 51.2 | 50.9 | 50.8 | 51.3 | 49.3 | 44.0 | 44.0 | 3329 | 482 | 4027 | 46.0 | 41.0 | 44.3 | 37.2 | |
| 12/23 | 53.5 | 53.0 | 51.2 | 52.7 | 52.5 | 52.4 | 51.7 | 51.1 | 50.8 | 50.5 | 49.8 | 44.4 | 43.9 | 3652 | 134 | 4026 | 48.5 | 45.3 | 45.7 | 40.1 | |
| 12/24 | 53.3 | 52.8 | 50.9 | 52.6 | 52.1 | 52.0 | 50.5 | 50.5 | 50.4 | 50.6 | 49.3 | 44.5 | 44.7 | 3470 | 98 | 4027 | 44.0 | 44.2 | 44.7 | 41.1 | |
| 12/25 | 53.3 | 52.8 | 50.7 | 52.6 | 52.2 | 52.0 | 49.5 | 48.9 | 48.8 | 49.0 | 48.9 | 44.1 | 44.3 | 3550 | 89 | 4031 | 48.0 | 47.1 | 49.2 | 38.5 | |
| 12/26 | 53.4 | 52.9 | 51.0 | 52.2 | 51.9 | 51.7 | 50.0 | 49.2 | 48.9 | 48.8 | 48.7 | 44.1 | 44.0 | 3222 | 432 | 4029 | 47.5 | 44.7 | 47.0 | 38.1 | |
| 12/27 | 53.2 | 52.6 | 51.7 | 51.8 | 51.4 | 51.3 | 49.8 | 49.0 | ? 48.6 | 48.6 | 48.3 | 43.0 | 43.3 | 3600 | 45 | 4031 | 45.5 | 41.8 | 45.0 | 34.5 | |
| 12/28 | 53.0 | 52.4 | 50.4 | 51.8 | 51.3 | 50.9 | 49.3 | 48.5 | ? 48.1 | 48.1 | 47.8 | 41.8 | 41.9 | 3444 | 398 | 4026 | 50.5 | 47.0 | 47.7 | 31.0 | |
| 12/29 | ? 53.0 | 52.5 | 51.2 | 51.7 | 51.5 | 51.4 | 49.9 | 48.9 | ? 48.4 | 48.0 | 48.3 | 42.5 | 41.0 | 3455 | 44 | 3886 | 50.0 | 42.9 | 45.7 | 34.3 | |
| 12/30 | 52.7 | 52.1 | 51.1 | 51.6 | 51.3 | 51.1 | 50.1 | 49.5 | 49.1 | 48.8 | 48.2 | 42.6 | 41.8 | 4104 | 44 | 3879 | 43.5 | 41.6 | 42.4 | 39.6 | |
| 12/31 | 52.8 | 52.1 | 50.6 | 51.7 | 51.2 | 50.8 | 49.5 | 48.8 | ? 48.4 | 48.4 | 47.6 | 41.2 | 41.6 | 3923 | 44 | 3882 | 48.0 | 47.0 | 47.3 | 32.6 | |
| Dec | 54.0 | 53.4 | 52.4 | 52.8 | 52.5 | 52.3 | 51.4 | 50.9 | 50.6 | 50.6 | 50.2 | 43.9 | 44.2 | 3454 | 230 | 4012 | 48.0 | 45.4 | 47.6 | 39.4 | |

| | | | |
|-----------|--------|-------|--------|
| Total CFS | 107089 | 7117 | 124383 |
| Total AF | 212407 | 14116 | 246709 |

Legend

- ? = 1-9 hours of data missing (Average includes estimations)
- ! = 10 or more hours of data missing (Average not calculated)
- # = Station out of service
- ↑ = Record high air temperature
- ↓ = Record low air temperature
- ☐ = Monthly Averages

Notes

- ¹ Temperatures are weighted averages based on individual penstock flow and temperature
- Highlighted cells in the TCD column indicate a TCD change was made on that day
- ² Current control point (see page 3 for more details)
- ³ NFH is only reported in October, November and December

| D A T E | Redding (RDD) Daily Air Temperatures (°F) | | | | | | | | | | | | | | | | | | | | | | | | | | | | | | | | | | | |
|------------------|---|----|------|-------------|----|------|-------|----|------|--------|----|------|--------|----|------|--------|----|------|--------|----|------|--------|----|------|--------|----|------|--------|----|------|--------|----|------|---------|----|------|
| | Actual | | | Forecasted | | | | | | | | | | | | | | | | | | | | | | | | | | | | | | | | |
| | Previous Day | | | Current Day | | | 1 Day | | | 2 Days | | | 3 Days | | | 4 Days | | | 5 Days | | | 6 Days | | | 7 Days | | | 8 Days | | | 9 Days | | | 10 Days | | |
| | ↓ | ↑ | Avg | ↓ | ↑ | Avg | ↓ | ↑ | Avg | ↓ | ↑ | Avg | ↓ | ↑ | Avg | ↓ | ↑ | Avg | ↓ | ↑ | Avg | ↓ | ↑ | Avg | ↓ | ↑ | Avg | ↓ | ↑ | Avg | ↓ | ↑ | Avg | ↓ | ↑ | Avg |
| 12/01 | 38 | 55 | 46.5 | 44 | 53 | 48.5 | 28 | 53 | 40.5 | 28 | 50 | 39.0 | 33 | 48 | 40.5 | 35 | 55 | 45.0 | 33 | 57 | 45.0 | 32 | 55 | 43.5 | 38 | 60 | 49.0 | 44 | 60 | 52.0 | 40 | 59 | 49.5 | 37 | 57 | 47.0 |
| 12/02 | 37 | 56 | 46.5 | 32 | 52 | 42.0 | 27 | 51 | 39.0 | 34 | 51 | 42.5 | 34 | 54 | 44.0 | 35 | 56 | 45.5 | 33 | 55 | 44.0 | 36 | 56 | 46.0 | 45 | 54 | 49.5 | 43 | 56 | 49.5 | 41 | 59 | 50.0 | 41 | 56 | 48.5 |
| 12/03 | 31 | 56 | 43.5 | 31 | 53 | 42.0 | 34 | 54 | 44.0 | 38 | 54 | 46.0 | 36 | 58 | 47.0 | 34 | 58 | 46.0 | 34 | 55 | 44.5 | 36 | 54 | 45.0 | 46 | 54 | 50.0 | 39 | 57 | 48.0 | 39 | 59 | 49.0 | 37 | 61 | 49.0 |
| 12/04 | 30 | 57 | 43.5 | 34 | 54 | 44.0 | 39 | 53 | 46.0 | 36 | 58 | 47.0 | 34 | 56 | 45.0 | 38 | 57 | 47.5 | 35 | 55 | 45.0 | 38 | 53 | 45.5 | 42 | 57 | 49.5 | 42 | 62 | 52.0 | 41 | 61 | 51.0 | 40 | 59 | 49.5 |
| 12/05 | 43 | 58 | 50.5 | 46 | 55 | 50.5 | 36 | 58 | 47.0 | 33 | 55 | 44.0 | 37 | 58 | 47.5 | 37 | 56 | 46.5 | 38 | 54 | 46.0 | 34 | 56 | 45.0 | 38 | 60 | 49.0 | 44 | 58 | 51.0 | 44 | 57 | 50.5 | 37 | 54 | 45.5 |
| 12/06 | 46 | 55 | 50.5 | 47 | 58 | 52.5 | 32 | 56 | 44.0 | 35 | 59 | 47.0 | 36 | 54 | 45.0 | 36 | 54 | 45.0 | 36 | 57 | 46.5 | 38 | 56 | 47.0 | 40 | 55 | 47.5 | 40 | 55 | 47.5 | 35 | 54 | 44.5 | 39 | 54 | 46.5 |
| 12/07 | 37 | 62 | 49.5 | 33 | 58 | 45.5 | 35 | 59 | 47.0 | 35 | 54 | 44.5 | 38 | 55 | 46.5 | 34 | 57 | 45.5 | 35 | 57 | 46.0 | 36 | 56 | 46.0 | 39 | 55 | 47.0 | 41 | 55 | 48.0 | 37 | 53 | 45.0 | 36 | 54 | 45.0 |
| 12/08 | 32 | 60 | 46.0 | 38 | 61 | 49.5 | 35 | 56 | 45.5 | 38 | 57 | 47.5 | 33 | 57 | 45.0 | 36 | 56 | 46.0 | 34 | 58 | 46.0 | 36 | 54 | 45.0 | 38 | 56 | 47.0 | 43 | 54 | 48.5 | 40 | 56 | 48.0 | 38 | 61 | 49.5 |
| 12/09 | 36 | 64 | 50.0 | 36 | 55 | 45.5 | 39 | 58 | 48.5 | 34 | 59 | 46.5 | 39 | 58 | 48.5 | 35 | 59 | 47.0 | 36 | 55 | 45.5 | 36 | 54 | 45.0 | 42 | 54 | 48.0 | 48 | 57 | 52.5 | 48 | 58 | 53.0 | 41 | 61 | 51.0 |
| 12/10 | 36 | 52 | 44.0 | 42 | 59 | 50.5 | 34 | 59 | 46.5 | 36 | 60 | 48.0 | 34 | 59 | 46.5 | 37 | 55 | 46.0 | 36 | 54 | 45.0 | 40 | 53 | 46.5 | 48 | 53 | 50.5 | 48 | 58 | 53.0 | 45 | 60 | 52.5 | 39 | 59 | 49.0 |
| 12/11 | 41 | 62 | 51.5 | 39 | 60 | 49.5 | 37 | 59 | 48.0 | 34 | 59 | 46.5 | 36 | 55 | 45.5 | 36 | 58 | 47.0 | 39 | 53 | 46.0 | 40 | 56 | 48.0 | 41 | 58 | 49.5 | 43 | 61 | 52.0 | 43 | 58 | 50.5 | 36 | 61 | 48.5 |
| 12/12 | 41 | 62 | 51.5 | 40 | 59 | 49.5 | 33 | 60 | 46.5 | 37 | 55 | 46.0 | 39 | 57 | 48.0 | 40 | 56 | 48.0 | 40 | 58 | 49.0 | 39 | 60 | 49.5 | 39 | 65 | 52.0 | 42 | 64 | 53.0 | 42 | 63 | 52.5 | 38 | 63 | 50.5 |
| 12/13 | 38 | 63 | 50.5 | 35 | 61 | 48.0 | 36 | 56 | 46.0 | 41 | 55 | 48.0 | 42 | 57 | 49.5 | 40 | 58 | 49.0 | 38 | 60 | 49.0 | 38 | 63 | 50.5 | 40 | 62 | 51.0 | 42 | 63 | 52.5 | 43 | 63 | 53.0 | 41 | 63 | 52.0 |
| 12/14 | 33 | 60 | 46.5 | 36 | 54 | 45.0 | 39 | 55 | 47.0 | 43 | 55 | 49.0 | 39 | 56 | 47.5 | 37 | 59 | 48.0 | 39 | 63 | 51.0 | 39 | 62 | 50.5 | 43 | 61 | 52.0 | 43 | 62 | 52.5 | 39 | 62 | 50.5 | 39 | 60 | 49.5 |
| 12/15 | 35 | 52 | 43.5 | 42 | 54 | 48.0 | 45 | 53 | 49.0 | 41 | 56 | 48.5 | 39 | 58 | 48.5 | 40 | 63 | 51.5 | 40 | 61 | 50.5 | 39 | 62 | 50.5 | 42 | 62 | 52.0 | 41 | 63 | 52.0 | 42 | 62 | 52.0 | 39 | 60 | 49.5 |
| 12/16 | 42 | 50 | 46.0 | 49 | 53 | 51.0 | 42 | 55 | 48.5 | 43 | 56 | 49.5 | 43 | 64 | 53.5 | 40 | 61 | 50.5 | 39 | 61 | 50.0 | 38 | 59 | 48.5 | 42 | 63 | 52.5 | 40 | 59 | 49.5 | 42 | 58 | 50.0 | 37 | 57 | 47.0 |
| 12/17 | 49 | 51 | 50.0 | 47 | 54 | 50.5 | 42 | 55 | 48.5 | 42 | 62 | 52.0 | 40 | 59 | 49.5 | 39 | 60 | 49.5 | 38 | 59 | 48.5 | 39 | 58 | 48.5 | 44 | 58 | 51.0 | 45 | 57 | 51.0 | 38 | 57 | 47.5 | 36 | 60 | 48.0 |
| 12/18 | 46 | 54 | 50.0 | 49 | 53 | 51.0 | 43 | 62 | 52.5 | 39 | 56 | 47.5 | 39 | 57 | 48.0 | 36 | 58 | 47.0 | 38 | 56 | 47.0 | 38 | 55 | 46.5 | 41 | 56 | 48.5 | 38 | 53 | 45.5 | 37 | 56 | 46.5 | 39 | 57 | 48.0 |
| 12/19 | 49 | 54 | 51.5 | 50 | 62 | 56.0 | 40 | 56 | 48.0 | 40 | 58 | 49.0 | 35 | 59 | 47.0 | 38 | 55 | 46.5 | 41 | 55 | 48.0 | 37 | 54 | 45.5 | 36 | 55 | 45.5 | 33 | 56 | 44.5 | 35 | 56 | 45.5 | 34 | 57 | 45.5 |
| 12/20 | 42 | 64 | 53.0 | 43 | 55 | 49.0 | 40 | 56 | 48.0 | 35 | 55 | 45.0 | 39 | 55 | 47.0 | 42 | 54 | 48.0 | 37 | 53 | 45.0 | 33 | 54 | 43.5 | 38 | 58 | 48.0 | 38 | 62 | 50.0 | 41 | 60 | 50.5 | 38 | 59 | 48.5 |
| 12/21 | 44 | 53 | 48.5 | 49 | 57 | 53.0 | 36 | 56 | 46.0 | 39 | 54 | 46.5 | 42 | 55 | 48.5 | 38 | 55 | 46.5 | 35 | 56 | 45.5 | 33 | 56 | 44.5 | 39 | 58 | 48.5 | 38 | 60 | 49.0 | 38 | 62 | 50.0 | 38 | 63 | 50.5 |
| 12/22 | 44 | 59 | 51.5 | 35 | 56 | 45.5 | 41 | 56 | 48.5 | 43 | 53 | 48.0 | 38 | 56 | 47.0 | 35 | 57 | 46.0 | 34 | 56 | 45.0 | 33 | 57 | 45.0 | 40 | 59 | 49.5 | 37 | 63 | 50.0 | 42 | 60 | 51.0 | 36 | 58 | 47.0 |
| 12/23 | 35 | 57 | 46.0 | 45 | 52 | 48.5 | 42 | 52 | 47.0 | 37 | 57 | 47.0 | 36 | 58 | 47.0 | 35 | 56 | 45.5 | 33 | 56 | 44.5 | 35 | 56 | 45.5 | 37 | 59 | 48.0 | 37 | 63 | 50.0 | 41 | 62 | 51.5 | 40 | 61 | 50.5 |
| 12/24 | 45 | 52 | 48.5 | 42 | 52 | 47.0 | 37 | 57 | 47.0 | 35 | 57 | 46.0 | 34 | 55 | 44.5 | 33 | 55 | 44.0 | 36 | 56 | 46.0 | 36 | 57 | 46.5 | 37 | 62 | 49.5 | 39 | 61 | 50.0 | 39 | 61 | 50.0 | 39 | 61 | 50.0 |
| 12/25 | 41 | 47 | 44.0 | 37 | 57 | 47.0 | 38 | 59 | 48.5 | 36 | 55 | 45.5 | 34 | 55 | 44.5 | 34 | 57 | 45.5 | 34 | 54 | 44.0 | 33 | 56 | 44.5 | 41 | 62 | 51.5 | 39 | 62 | 50.5 | 40 | 60 | 50.0 | 38 | 61 | 49.5 |
| 12/26 | 36 | 60 | 48.0 | 36 | 59 | 47.5 | 36 | 55 | 45.5 | 34 | 56 | 45.0 | 34 | 58 | 46.0 | 37 | 56 | 46.5 | 35 | 57 | 46.0 | 35 | 61 | 48.0 | 44 | 68 | 56.0 | 43 | 65 | 54.0 | 43 | 61 | 52.0 | 39 | 59 | 49.0 |
| 12/27 | 35 | 60 | 47.5 | 34 | 55 | 44.5 | 34 | 55 | 44.5 | 35 | 60 | 47.5 | 35 | 58 | 46.5 | 37 | 57 | 47.0 | 34 | 59 | 46.5 | 35 | 60 | 47.5 | 41 | 62 | 51.5 | 36 | 56 | 46.0 | 35 | 58 | 46.5 | 40 | 55 | 47.5 |
| 12/28 | 33 | 58 | 45.5 | 45 | 58 | 51.5 | 36 | 59 | 47.5 | 37 | 57 | 47.0 | 38 | 56 | 47.0 | 35 | 58 | 46.5 | 36 | 59 | 47.5 | 38 | 59 | 48.5 | 37 | 59 | 48.0 | 36 | 59 | 47.5 | 35 | 60 | 47.5 | 39 | 56 | 47.5 |
| 12/29 | 43 | 58 | 50.5 | 38 | 59 | 48.5 | 35 | 58 | 46.5 | 36 | 54 | 45.0 | 33 | 57 | 45.0 | 35 | 58 | 46.5 | 35 | 58 | 46.5 | 35 | 58 | 46.5 | 38 | 55 | 46.5 | 39 | 57 | 48.0 | 39 | 54 | 46.5 | 38 | 54 | 46.0 |
| 12/30 | 37 | 63 | 50.0 | 32 | 58 | 45.0 | 35 | 52 | 43.5 | 32 | 56 | 44.0 | 35 | 58 | 46.5 | 36 | 57 | 46.5 | 36 | 57 | 46.5 | 38 | 52 | 45.0 | 37 | 58 | 47.5 | 40 | 58 | 49.0 | 38 | 58 | 48.0 | 39 | 60 | 49.5 |
| 12/31 | 32 | 55 | 43.5 | 42 | 52 | 47.0 | 31 | 56 | 43.5 | 33 | 56 | 44.5 | 35 | 56 | 45.5 | 36 | 56 | 46.0 | 35 | 55 | 45.0 | 36 | 57 | 46.5 | 40 | 61 | 50.5 | 43 | 56 | 49.5 | 38 | 58 | 48.0 | 39 | 58 | 48.5 |

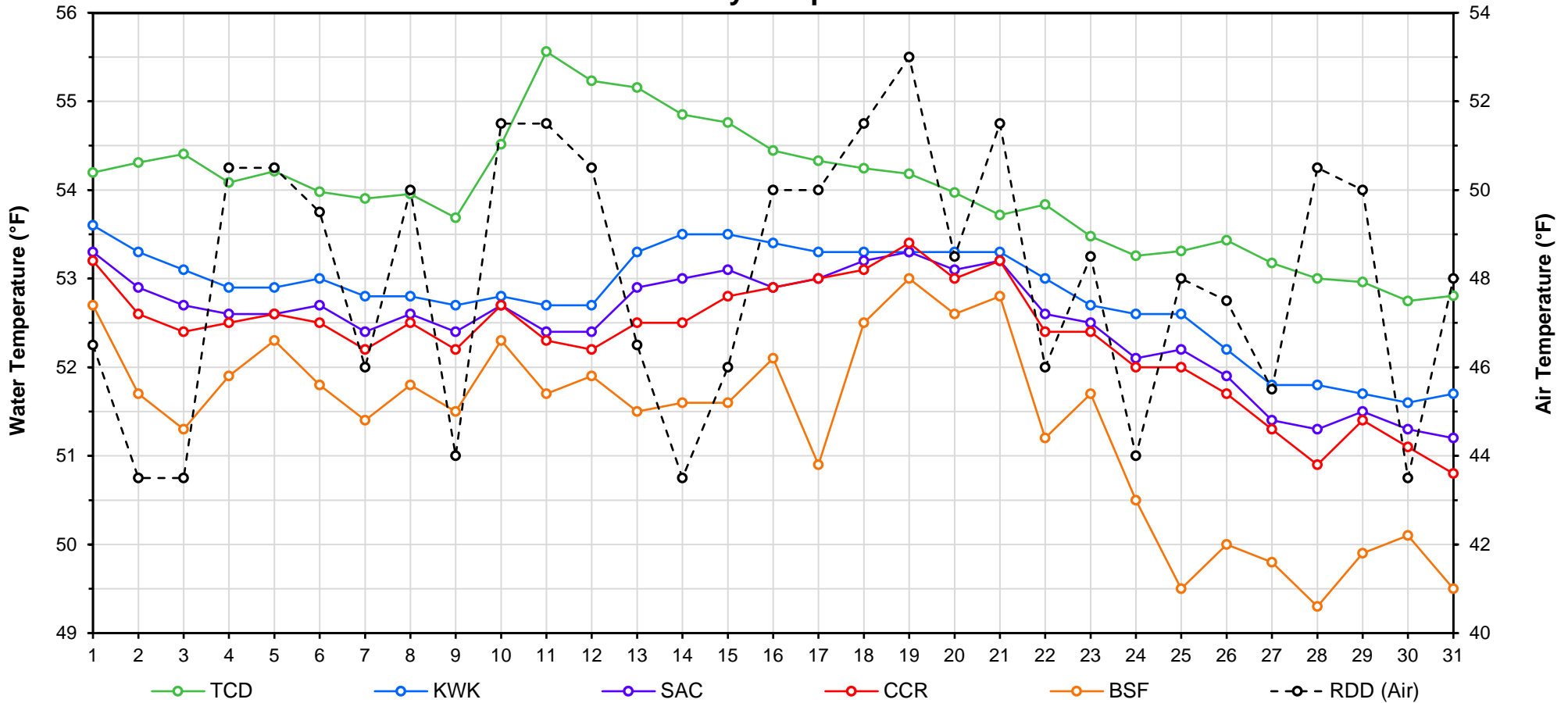
Web Links

- [10-Day Min/Max Forecast](#)
- [Previous Days Min/Max Actuals](#)

Legend

- NR = Forecasted temperatures not recorded
- 100** = Previous day actual temperatures in red and bolded indicate a record temperature for that date

Mean Daily Temperatures



| Station Details | | | |
|------------------|------------------|--|----------------------------|
| Code | Body of Water | Location ¹ | CDEC Link |
| TCD | N/A | Shasta Power Plant | N/A |
| SHD | Sacramento River | 0.3 miles downstream of Shasta Power Plant | Click Here |
| SPP | N/A | Spring Creek Power Plant | N/A |
| KWK | Sacramento River | 0.8 miles downstream of Keswick Dam | Click Here |
| SAC | Sacramento River | 4.8 miles downstream of Keswick Dam | Click Here |
| CCR | Sacramento River | 9.7 miles downstream of Keswick Dam | Click Here |
| BSF | Sacramento River | 25 miles downstream of Keswick Dam | Click Here |
| JLF | Sacramento River | 34 miles downstream of Keswick Dam | Click Here |
| BND | Sacramento River | 41 miles downstream of Keswick Dam | Click Here |
| RDB | Sacramento River | 58 miles downstream of Keswick Dam | Click Here |
| IGO | Clear Creek | 7.3 miles downstream of Whiskeytown Dam | Click Here |
| LWS | Trinity River | 1.1 miles downstream of Lewiston Dam | Click Here |
| DGC ² | Trinity River | 19 miles downstream of Lewiston Dam | Click Here |
| NFH ³ | Trinity River | 38 miles downstream of Lewiston Dam | Click Here |

| Temperature Control Point | | |
|---------------------------|-------------|-------------------|
| Point | Temp. (°F) | Begin Date |
| BSF | 56.0 | 05/25/2018 |
| | | |
| | | |
| | | |
| | | |
| | | |
| | | |
| | | |

Notes

¹ Distances are approximate

² DGC is only reported in September

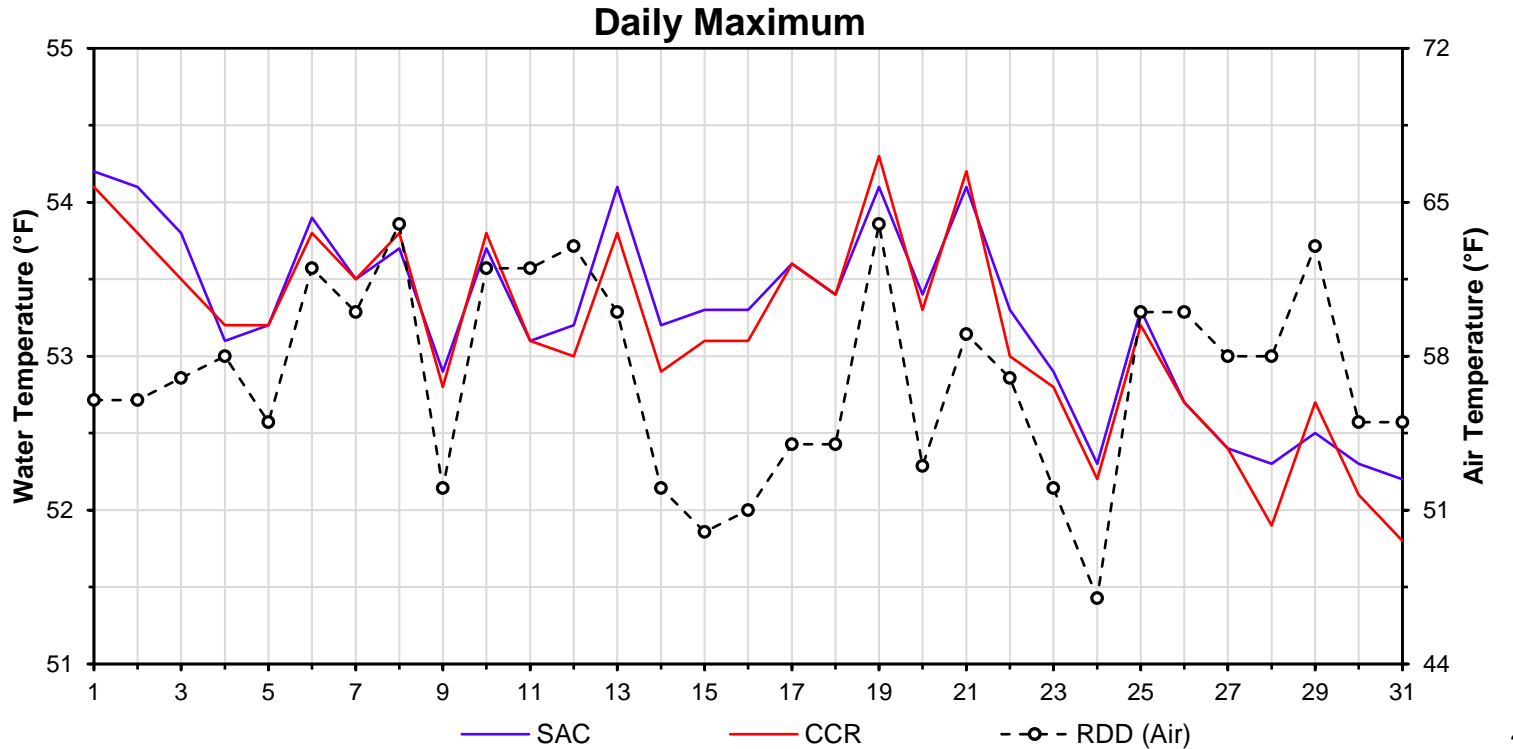
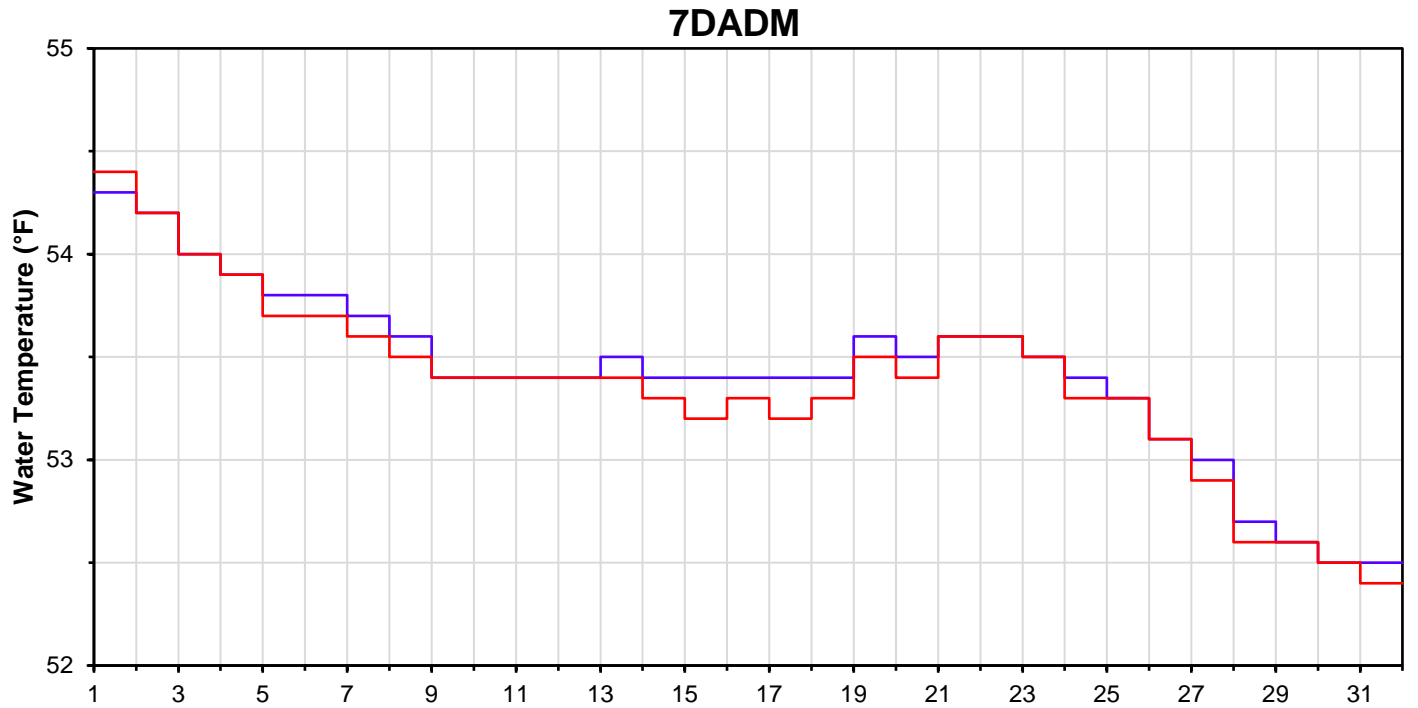
³ NFH is only reported in October, November and December

| DATE | Daily Max | | 7DADM ¹ | | DAT ² |
|-------|-----------|------|--------------------|------|------------------|
| | SAC | CCR | SAC | CCR | BSF |
| 12/01 | 54.2 | 54.1 | 54.3 | 54.4 | 52.7 |
| 12/02 | 54.1 | 53.8 | 54.2 | 54.2 | 51.7 |
| 12/03 | 53.8 | 53.5 | 54.0 | 54.0 | 51.3 |
| 12/04 | 53.1 | 53.2 | 53.9 | 53.9 | 51.9 |
| 12/05 | 53.2 | 53.2 | 53.8 | 53.7 | 52.3 |
| 12/06 | 53.9 | 53.8 | 53.8 | 53.7 | 51.8 |
| 12/07 | 53.5 | 53.5 | 53.7 | 53.6 | 51.4 |
| 12/08 | 53.7 | 53.8 | 53.6 | 53.5 | 51.8 |
| 12/09 | 52.9 | 52.8 | 53.4 | 53.4 | 51.5 |
| 12/10 | 53.7 | 53.8 | 53.4 | 53.4 | 52.3 |
| 12/11 | 53.1 | 53.1 | 53.4 | 53.4 | 51.7 |
| 12/12 | 53.2 | 53.0 | 53.4 | 53.4 | 51.9 |
| 12/13 | 54.1 | 53.8 | 53.5 | 53.4 | 51.5 |
| 12/14 | 53.2 | 52.9 | 53.4 | 53.3 | 51.6 |
| 12/15 | 53.3 | 53.1 | 53.4 | 53.2 | 51.6 |
| 12/16 | 53.3 | 53.1 | 53.4 | 53.3 | 52.1 |
| 12/17 | 53.6 | 53.6 | 53.4 | 53.2 | 50.9 |
| 12/18 | 53.4 | 53.4 | 53.4 | 53.3 | 52.5 |
| 12/19 | 54.1 | 54.3 | 53.6 | 53.5 | 53.0 |
| 12/20 | 53.4 | 53.3 | 53.5 | 53.4 | 52.6 |
| 12/21 | 54.1 | 54.2 | 53.6 | 53.6 | 52.8 |
| 12/22 | 53.3 | 53.0 | 53.6 | 53.6 | 51.2 |
| 12/23 | 52.9 | 52.8 | 53.5 | 53.5 | 51.7 |
| 12/24 | 52.3 | 52.2 | 53.4 | 53.3 | 50.5 |
| 12/25 | 53.3 | 53.2 | 53.3 | 53.3 | 49.5 |
| 12/26 | 52.7 | 52.7 | 53.1 | 53.1 | 50.0 |
| 12/27 | 52.4 | 52.4 | 53.0 | 52.9 | 49.8 |
| 12/28 | 52.3 | 51.9 | 52.7 | 52.6 | 49.3 |
| 12/29 | 52.5 | 52.7 | 52.6 | 52.6 | 49.9 |
| 12/30 | 52.3 | 52.1 | 52.5 | 52.5 | 50.1 |
| 12/31 | 52.2 | 51.8 | 52.5 | 52.4 | 49.5 |

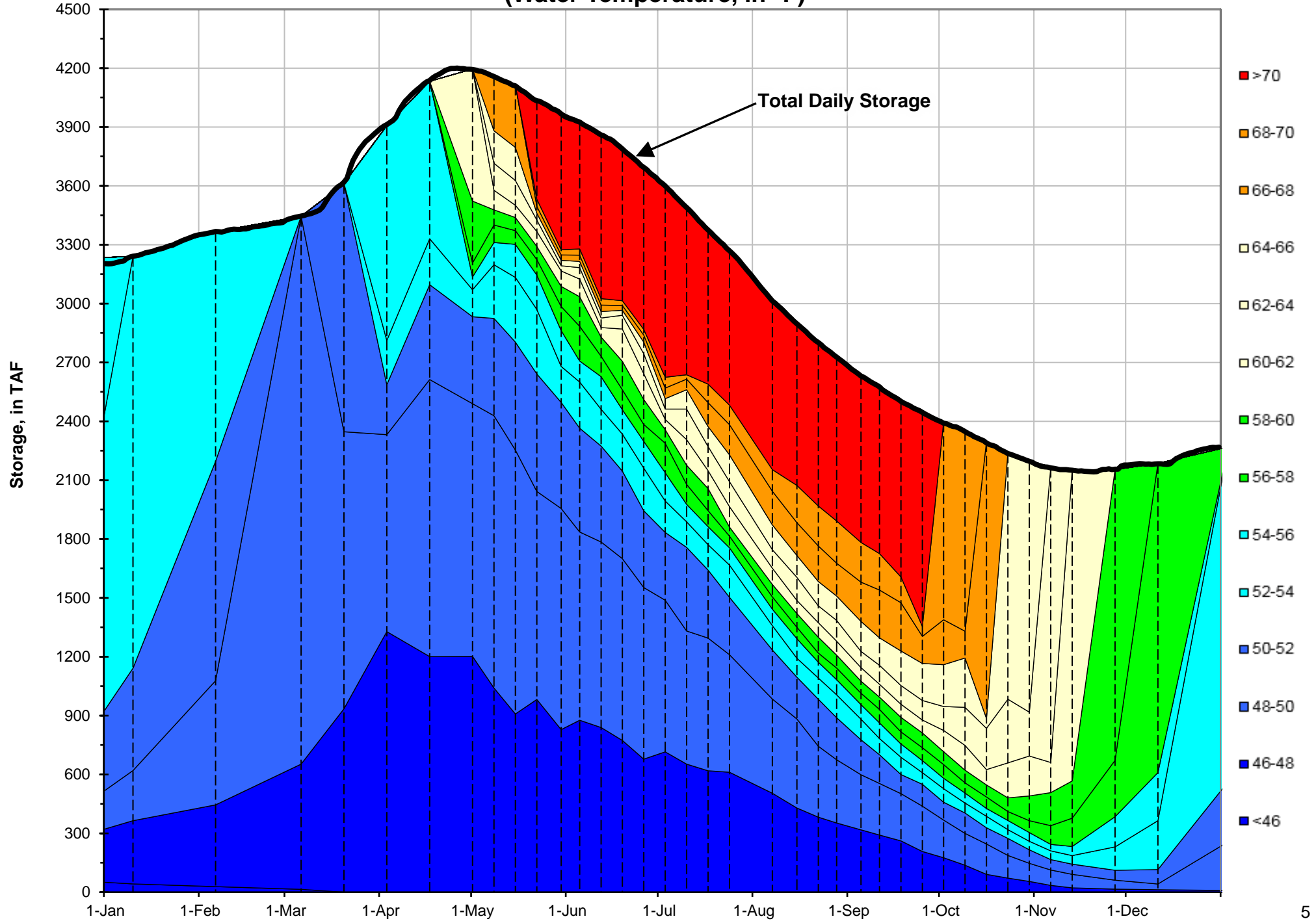
Notes

¹ 7DADM = 7-Day Average
Daily Maximum

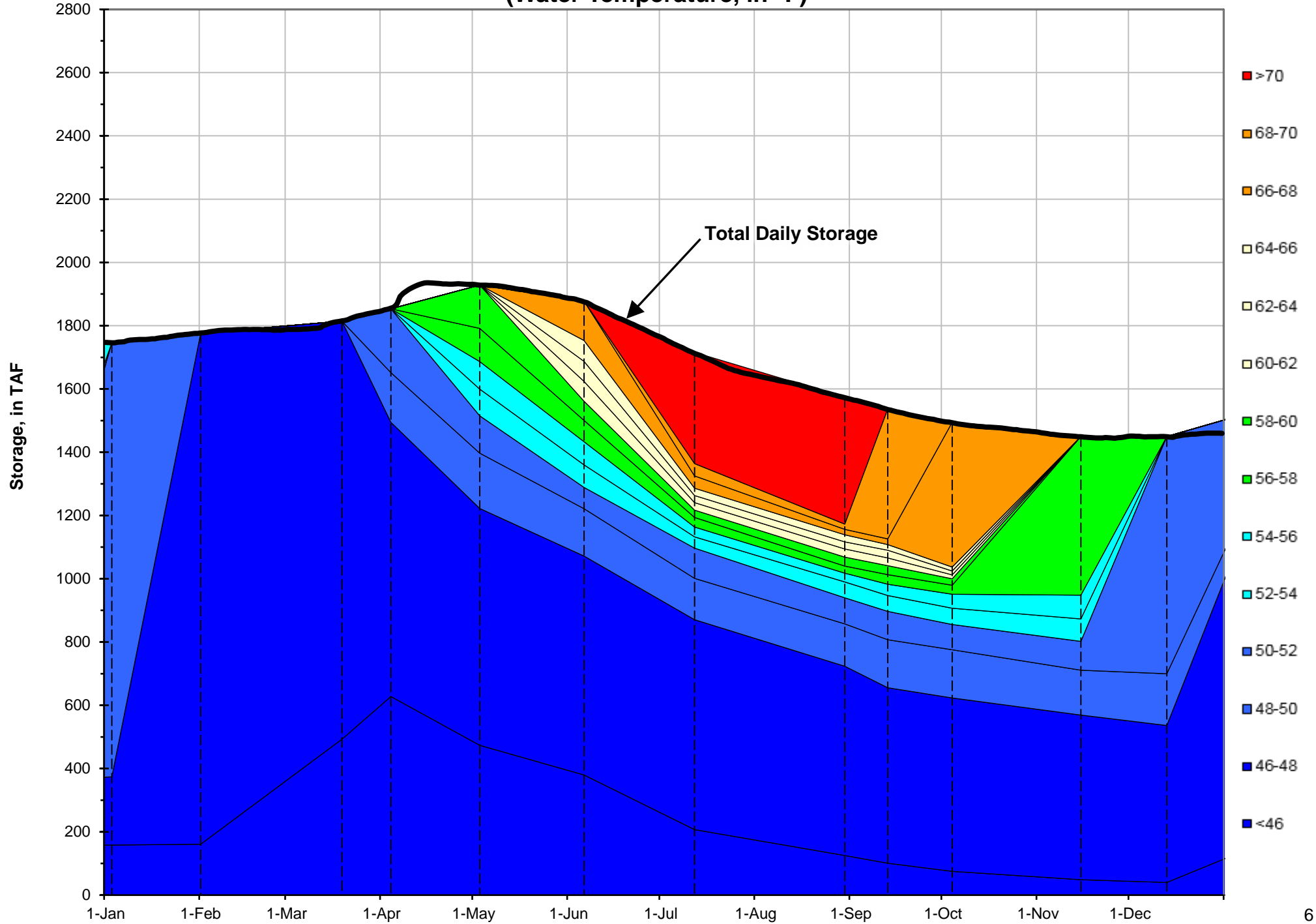
² DAT = Daily Average
Temperature



Shasta Lake Isothermobaths - 2018 (Water Temperature, in °F)



Trinity Lake Isothermobaths - 2018 (Water Temperature, in °F)



Whiskeytown Lake Isothermobaths - 2018 (Water Temperature, in °F)

