

# Northern CVP Water Temperature Report

## December - 2017

Page	Description
1	- Mean Daily Water Temperature, Release Flow Rates and Air Temperatures with Monthly Averages
2	- Redding 10-Day Forecasted Air Temperatures
3	- Sacramento River Mean Daily Water Temperature, Air Temperature and 10-Day Forecasted Air Temperature Plot - Water Temperature Measuring Station Details - Temperature Control Point Details
4	- Lake Shasta Isothermalbaths Plot
5	- Daily Maximum and 7DADM
x	- <a href="#">TCD Configuration</a> (External Link)



All Data in this Report is Preliminary and Subject to Change

DATE	Mean Daily Water Temperatures (°F)													Mean Daily Release (CFS)			Mean Daily Air Temperatures (°F)				
	TCD <sup>1</sup>	SHD	SPP <sup>1</sup>	KWK	SAC	CCR	BSF <sup>2</sup>	JLF	BND	RDB	IGO	LWS	NFH <sup>3</sup>	Shasta Generation	Spring Creek P.P.	Keswick Total	RDD	BSF	RDB	LWS	
Nov	53.2	52.5	54.8	52.7	52.7	52.8	52.9	52.9	53.0	53.2	53.0	47.0	48.0	4985	60	5127	53.2	51.4	53.0	44.7	
12/01	53.0	52.4	54.4	52.5	52.3	52.3	51.7	51.3	51.1	50.9	51.3	45.5	45.6	4615	14	4433	48.0	43.3	46.1	38.2	
12/02	53.2	52.5	54.1	52.5	52.2	52.1	51.3	50.8	50.8	50.8	51.3	45.4	45.4	4046	14	4433	44.5	43.3	45.7	39.3	
12/03	53.0	52.5	53.9	52.2	52.0	52.1	51.7	51.3	51.1	50.9	51.1	44.4	45.2	3909	14	4428	46.5	45.3	49.3	38.3	
12/04	53.3	52.6	53.8	52.1	51.7	51.5	50.5	50.0	49.9	50.1	50.3	43.5	44.1	4404	14	4439	48.5	48.1	48.5	34.3	
12/05	53.3	52.8	53.5	52.0	51.7	51.7	50.5	49.8	49.4	49.0	50.4	43.0	42.7	4953	14	4428	56.5	45.8	50.2	33.3	
12/06	53.2	52.7	53.3	52.1	51.8	51.8	50.8	50.4	50.1	49.7	50.5	42.8	41.7	4592	14	4427	↑	61.5	47.8	54.0	35.8
12/07	53.0	52.5	53.1	52.3	52.0	52.0	50.8	50.4	50.1	49.9	50.0	41.7	41.5	4298	14	4431	↑	53.0	44.6	52.3	33.2
12/08	52.9	52.3	52.9	52.3	52.0	52.0	50.9	50.4	50.2	49.9	50.0	41.9	40.9	4344	14	4425		48.5	42.6	47.8	34.0
12/09	52.8	52.3	52.5	52.2	51.9	52.0	50.8	50.4	50.1	49.8	49.8	42.4	41.5	4080	14	4432		49.5	42.5	47.2	35.0
12/10	52.8	52.3	52.2	52.0	51.7	51.8	50.6	50.2	50.0	49.7	49.2	42.3	41.8	4354	14	4433	↑	51.0	42.9	47.8	34.8
12/11	52.7	52.2	52.0	51.9	51.6	51.6	50.3	50.0	49.7	49.5	48.9	42.2	41.5	4350	14	4430	↑	50.0	41.4	47.1	34.0
12/12	52.7	52.2	51.9	51.8	51.5	51.5	50.2	49.8	49.5	49.1	48.8	42.5	41.1	4278	14	4432	↑	47.5	40.6	44.6	33.0
12/13	52.7	52.2	51.5	51.7	51.4	51.3	50.1	49.6	49.3	48.9	48.9	42.6	41.4	4969	216	4434		48.0	40.3	43.3	33.3
12/14	52.5	52.1	51.7	51.8	51.6	51.8	50.8	50.3	49.9	49.3	49.3	42.7	41.6	4128	24	4438	↑	66.5	48.7	51.8	36.0
12/15	52.4	51.9	51.1	51.9	51.6	51.5	50.6	50.5	50.4	50.1	48.9	43.2	42.0	4387	66	4438		47.0	43.9	47.3	38.1
12/16	52.5	51.9	51.0	51.7	51.5	51.4	50.4	50.1	49.9	49.5	48.5	42.8	42.3	4695	14	4427		55.5	53.9	54.8	35.0
12/17	52.4	52.0	51.0	51.5	51.3	51.2	50.2	49.7	49.4	49.1	48.7	41.5	41.1	4312	17	4434		56.5	55.3	56.0	34.1
12/18	52.1	51.7	50.8	51.5	51.2	51.3	50.5	50.3	50.1	49.7	48.5	41.7	40.7	3951	125	4462		48.5	44.0	46.0	35.4
12/19	52.0	51.5	50.5	51.5	51.2	51.1	50.0	49.7	49.6	49.3	48.5	42.5	41.2	4583	14	4470		42.5	41.2	43.7	39.3
12/20	51.9	51.4	50.4	51.3	51.0	51.0	50.1	49.9	49.6	49.2	48.1	42.1	42.2	4162	17	4480		42.5	41.2	46.1	35.5
12/21	52.0	51.5	50.6	50.9	50.5	50.4	49.2	48.8	48.6	48.5	47.4	41.1	40.7	4370	15	4462		44.0	41.4	43.1	30.5
12/22	51.7	51.3	50.6	50.7	50.4	50.3	49.2	48.7	48.5	48.0	47.8	41.4	39.8	4320	15	4464		40.5	40.3	41.8	34.0
12/23	51.6	51.1	50.1	50.9	50.6	50.7	49.8	49.6	49.3	48.8	48.1	42.2	41.3	4303	34	4525		48.5	45.1	47.7	37.5
12/24	51.6	51.1	49.8	51.0	50.6	50.7	49.9	49.8	49.6	49.4	47.8	42.6	42.1	4592	37	4542		42.5	42.5	44.4	37.8
12/25	51.4	50.9	49.7	50.8	50.5	50.6	49.7	49.4	49.2	48.9	47.6	42.7	42.9	4329	14	4538		48.5	42.9	45.7	39.0
12/26	51.3	50.8	49.5	50.7	50.5	50.5	49.5	49.3	49.1	48.9	47.5	42.8	42.9	4222	14	4542		45.0	40.8	44.7	36.6
12/27	51.2	50.7	49.5	50.7	50.4	50.4	49.5	49.2	49.0	48.7	47.3	42.7	42.7	4294	14	4536		46.5	41.0	44.4	36.0
12/28	52.3	51.5	49.4	50.6	50.3	50.4	49.6	49.3	49.1	48.8	47.5	42.4	42.2	4323	21	4533		46.5	41.7	44.8	35.8
12/29	52.9	52.5	49.3	50.5	50.2	50.2	49.1	48.9	48.8	48.7	47.1	42.1	42.2	4437	14	4542		44.5	39.4	44.8	35.3
12/30	52.8	52.3	49.1	51.2	50.9	50.8	49.7	49.2	48.9	48.5	47.4	42.3	42.5	4609	14	4538		51.0	45.0	47.0	39.7
12/31	52.7	52.2	49.0	51.9	51.7	51.7	50.6	50.3	50.0	49.4	47.6	43.0	43.5	4519	14	4536		49.5	45.9	48.4	41.5
Dec	52.4	51.9	51.4	51.6	51.3	51.3	50.3	49.9	49.7	49.4	48.8	42.6	42.2	4378	28	4468	49.0	44.0	47.3	35.9	

Total CFS	135728	867	138512
Total AF	269211	1720	274733

Legend

- ? = 1-9 hours of data missing (Average includes estimations)
- ! = 10 or more hours of data missing (Average not calculated)
- # = Station out of service
- ↑ = Record high air temperature
- ↓ = Record low air temperature
- = Monthly Averages

Notes

- <sup>1</sup> Temperatures are weighted averages based on individual penstock flow and temperature
- Highlighted cells in the TCD column indicate a TCD change was made on that day
- <sup>2</sup> Current control point (see page 3 for more details)
- <sup>3</sup> NFH is only reported in October, November and December

D A T E	Redding (RDD) Daily Air Temperatures (°F)																																			
	Actual			Forecasted																																
	Previous Day			Current Day			1 Day			2 Days			3 Days			4 Days			5 Days			6 Days			7 Days			8 Days			9 Days			10 Days		
	↓	↑	Avg	↓	↑	Avg	↓	↑	Avg	↓	↑	Avg	↓	↑	Avg	↓	↑	Avg	↓	↑	Avg	↓	↑	Avg	↓	↑	Avg	↓	↑	Avg	↓	↑	Avg	↓	↑	Avg
12/01	40	62	51.0	36	61	48.5	41	55	48.0	37	53	45.0	32	57	44.5	34	63	48.5	37	64	50.5	37	64	50.5	40	68	54.0	40	66	53.0	40	64	52.0	42	64	53.0
12/02	36	60	48.0	37	55	46.0	36	53	44.5	32	57	44.5	34	61	47.5	36	64	50.0	36	66	51.0	36	66	51.0	42	68	55.0	39	66	52.5	39	59	49.0	37	61	49.0
12/03	37	52	44.5	37	53	45.0	34	57	45.5	35	62	48.5	37	63	50.0	38	64	51.0	37	66	51.5	38	64	51.0	42	69	55.5	33	64	48.5	38	62	50.0	35	63	49.0
12/04	35	58	46.5	39	57	48.0	36	61	48.5	37	64	50.5	36	63	49.5	36	66	51.0	36	67	51.5	37	66	51.5	41	69	55.0	37	65	51.0	39	61	50.0	38	63	50.5
12/05	39	58	48.5	48	62	55.0	35	64	49.5	36	64	50.0	36	63	49.5	37	66	51.5	36	66	51.0	36	65	50.5	38	67	52.5	36	68	52.0	39	65	52.0	40	64	52.0
12/06	47	66	56.5	54	65	59.5	35	64	49.5	34	65	49.5	36	66	51.0	35	67	51.0	37	67	52.0	38	67	52.5	41	71	56.0	40	65	52.5	38	64	51.0	38	63	50.5
12/07	53	<b>70</b>	61.5	38	67	52.5	35	65	50.0	36	68	52.0	37	68	52.5	35	66	50.5	37	66	51.5	38	65	51.5	43	70	56.5	42	67	54.5	41	64	52.5	39	60	49.5
12/08	34	<b>72</b>	53.0	35	71	53.0	35	71	53.0	36	68	52.0	34	67	50.5	38	65	51.5	39	68	53.5	41	68	54.5	40	70	55.0	38	65	51.5	41	62	51.5	37	60	48.5
12/09	32	65	48.5	31	66	48.5	37	66	51.5	37	66	51.5	38	67	52.5	39	68	53.5	41	70	55.5	42	67	54.5	42	66	54.0	41	68	54.5	43	64	53.5	41	60	50.5
12/10	30	69	49.5	30	70	50.0	33	71	52.0	35	71	53.0	36	69	52.5	40	69	54.5	41	66	53.5	41	66	53.5	42	67	54.5	40	64	52.0	39	60	49.5	39	56	47.5
12/11	29	<b>73</b>	51.0	30	71	50.5	34	72	53.0	37	74	55.5	41	74	57.5	40	66	53.0	43	66	54.5	44	65	54.5	45	68	56.5	39	65	52.0	41	64	52.5	37	61	49.0
12/12	30	<b>70</b>	50.0	29	72	50.5	37	75	56.0	42	72	57.0	41	68	54.5	39	64	51.5	41	66	53.5	41	67	54.0	43	69	56.0	42	59	50.5	38	57	47.5	34	54	44.0
12/13	27	<b>68</b>	47.5	29	72	50.5	42	72	57.0	40	68	54.0	37	66	51.5	38	68	53.0	39	66	52.5	38	65	51.5	39	67	53.0	39	63	51.0	41	62	51.5	35	59	47.0
12/14	29	67	48.0	59	68	63.5	31	62	46.5	31	60	45.5	27	64	45.5	37	64	50.5	37	61	49.0	36	58	47.0	37	57	47.0	37	59	48.0	36	58	47.0	32	54	43.0
12/15	57	<b>76</b>	66.5	35	63	49.0	35	58	46.5	37	63	50.0	35	63	49.0	35	61	48.0	37	57	47.0	33	60	46.5	39	66	52.5	35	67	51.0	44	66	55.0	42	65	53.5
12/16	35	59	47.0	50	57	53.5	38	63	50.5	36	64	50.0	36	63	49.5	36	57	46.5	32	59	45.5	32	61	46.5	38	68	53.0	39	64	51.5	36	60	48.0	36	62	49.0
12/17	50	61	55.5	46	68	57.0	36	64	50.0	35	60	47.5	37	55	46.0	30	58	44.0	30	60	45.0	31	61	46.0	46	66	56.0	37	63	50.0	39	61	50.0	39	59	49.0
12/18	45	68	56.5	36	63	49.5	35	59	47.0	35	53	44.0	29	57	43.0	30	56	43.0	31	56	43.5	30	56	43.0	36	64	50.0	37	60	48.5	40	59	49.5	36	60	48.0
12/19	34	63	48.5	35	57	46.0	33	52	42.5	29	56	42.5	30	55	42.5	31	59	45.0	33	58	45.5	32	58	45.0	40	58	49.0	43	62	52.5	40	61	50.5	39	60	49.5
12/20	35	50	42.5	36	52	44.0	29	56	42.5	29	55	42.0	33	59	46.0	36	61	48.5	35	60	47.5	35	58	46.5	39	59	49.0	38	58	48.0	35	56	45.5	33	57	45.0
12/21	31	54	42.5	32	56	44.0	29	56	42.5	33	60	46.5	36	60	48.0	36	58	47.0	34	58	46.0	32	58	45.0	39	59	49.0	31	56	43.5	30	56	43.0	35	58	46.5
12/22	31	57	44.0	34	54	44.0	32	58	45.0	36	58	47.0	35	61	48.0	35	59	47.0	34	59	46.5	32	60	46.0	42	66	54.0	42	66	54.0	41	64	52.5	39	61	50.0
12/23	32	49	40.5	39	58	48.5	37	57	47.0	35	61	48.0	34	60	47.0	33	60	46.5	35	62	48.5	37	63	50.0	42	66	54.0	40	64	52.0	41	61	51.0	38	60	49.0
12/24	39	58	48.5	36	58	47.0	35	63	49.0	34	62	48.0	36	62	49.0	36	62	49.0	35	61	48.0	38	61	49.5	39	59	49.0	39	57	48.0	40	58	49.0	37	59	48.0
12/25	36	49	42.5	34	61	47.5	35	61	48.0	37	62	49.5	36	63	49.5	36	62	49.0	37	63	50.0	38	63	50.5	44	66	55.0	42	64	53.0	40	62	51.0	39	62	50.5
12/26	33	64	48.5	30	61	45.5	36	62	49.0	36	64	50.0	36	63	49.5	38	64	51.0	38	64	51.0	38	62	50.0	43	69	56.0	40	66	53.0	40	59	49.5	41	62	51.5
12/27	30	60	45.0	32	62	47.0	34	63	48.5	34	62	48.0	35	63	49.0	35	61	48.0	37	61	49.0	37	61	49.0	41	69	55.0	37	64	50.5	40	62	51.0	40	64	52.0
12/28	30	63	46.5	33	63	48.0	34	63	48.5	36	62	49.0	36	62	49.0	38	61	49.5	37	63	50.0	38	62	50.0	47	66	56.5	43	65	54.0	46	64	55.0	43	58	50.5
12/29	32	61	46.5	30	62	46.0	34	62	48.0	35	62	48.5	35	62	48.5	37	61	49.0	37	60	48.5	38	60	49.0	44	60	52.0	43	62	52.5	43	58	50.5	42	57	49.5
12/30	30	59	44.5	36	64	50.0	35	64	49.5	35	65	50.0	36	64	50.0	38	60	49.0	40	56	48.0	39	58	48.5	49	62	55.5	41	61	51.0	41	58	49.5	40	59	49.5
12/31	35	67	51.0	36	63	49.5	36	66	51.0	38	65	51.5	40	63	51.5	42	57	49.5	40	59	49.5	37	58	47.5	44	58	51.0	41	64	52.5	44	61	52.5	40	60	50.0

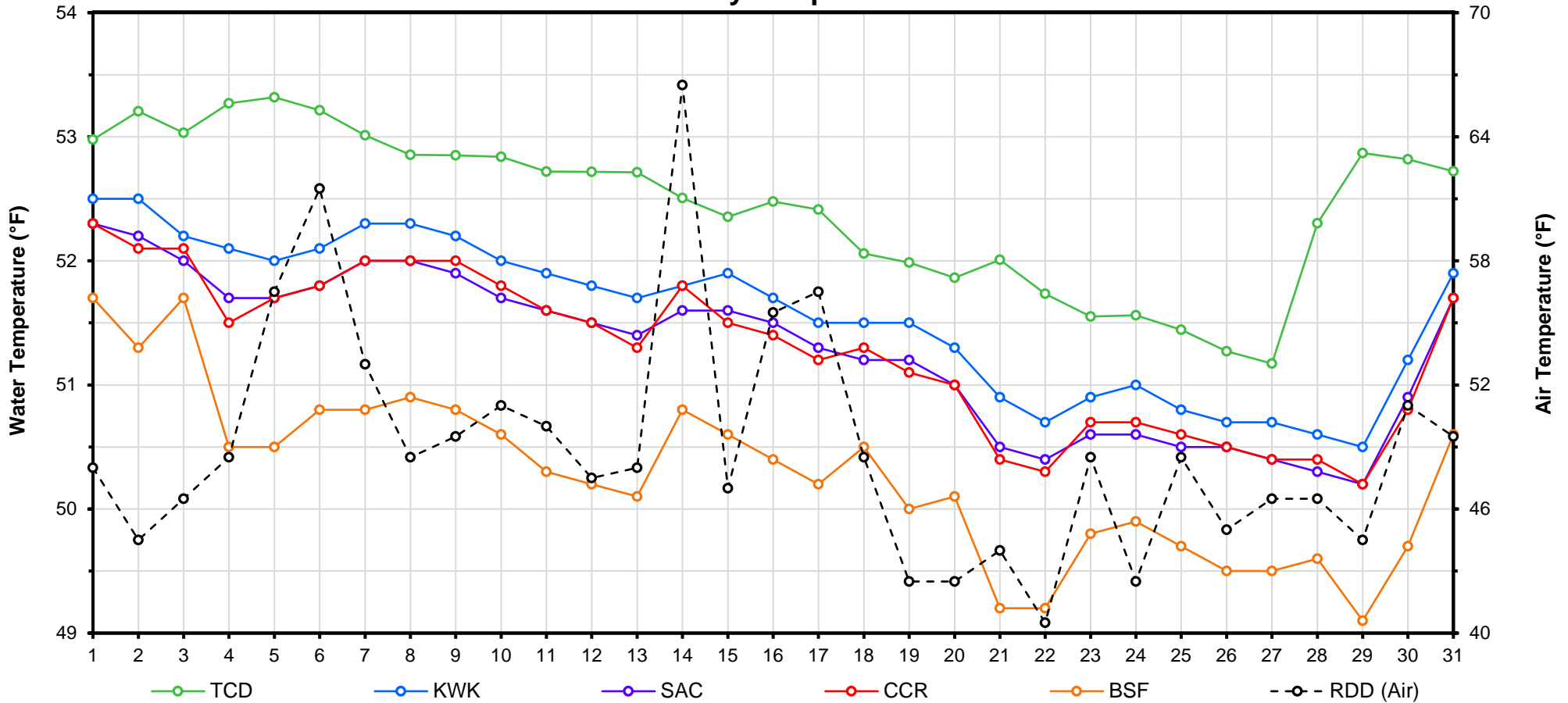
[Web Links](#)

[Legend](#)

[10-Day Min/Max Forecast](#)  
[Previous Days Min/Max Actuals](#)

NR = Forecasted temperatures not recorded  
**100** = Previous day actual temperatures in red and bolded indicate a record temperature for that date

# Mean Daily Temperatures



Station Details			
Code	Body of Water	Location <sup>1</sup>	CDEC Link
TCD	N/A	Shasta Power Plant	N/A
SHD	Sacramento River	0.3 miles downstream of Shasta Power Plant	<a href="#">Click Here</a>
SPP	N/A	Spring Creek Power Plant	N/A
KWK	Sacramento River	0.8 miles downstream of Keswick Dam	<a href="#">Click Here</a>
SAC	Sacramento River	4.8 miles downstream of Keswick Dam	<a href="#">Click Here</a>
CCR	Sacramento River	9.7 miles downstream of Keswick Dam	<a href="#">Click Here</a>
BSF	Sacramento River	25 miles downstream of Keswick Dam	<a href="#">Click Here</a>
JLF	Sacramento River	34 miles downstream of Keswick Dam	<a href="#">Click Here</a>
BND	Sacramento River	41 miles downstream of Keswick Dam	<a href="#">Click Here</a>
RDB	Sacramento River	58 miles downstream of Keswick Dam	<a href="#">Click Here</a>
IGO	Clear Creek	7.3 miles downstream of Whiskeytown Dam	<a href="#">Click Here</a>
LWS	Trinity River	1.1 miles downstream of Lewiston Dam	<a href="#">Click Here</a>
DGC <sup>2</sup>	Trinity River	19 miles downstream of Lewiston Dam	<a href="#">Click Here</a>
NFH <sup>3</sup>	Trinity River	38 miles downstream of Lewiston Dam	<a href="#">Click Here</a>

Temperature Control Point		
Point	Temp. (°F)	Date Range
<b>BSF</b>	<b>56.0</b>	<b>06/01/17 - Current</b>

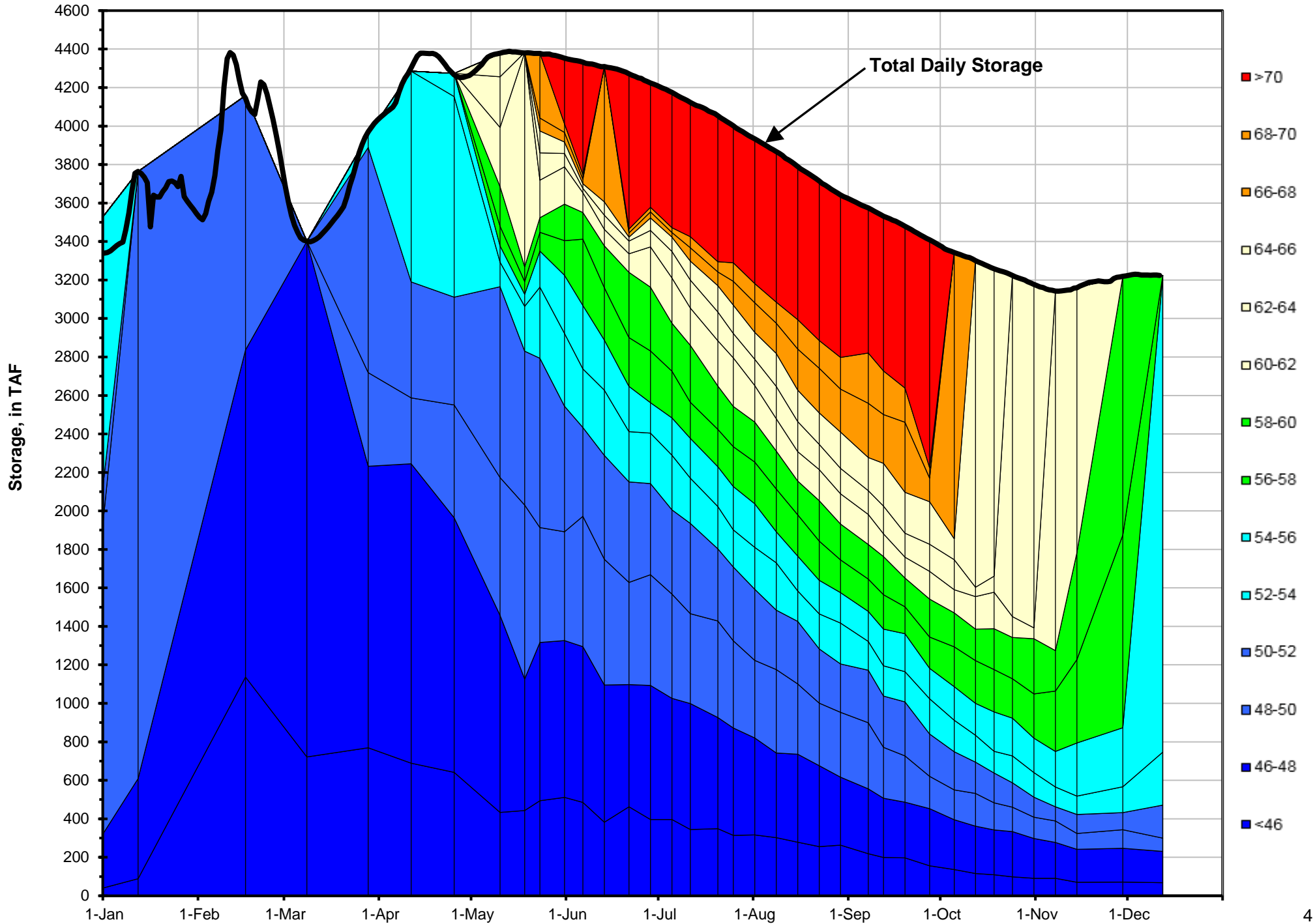
### Notes

<sup>1</sup> Distances are approximate

<sup>2</sup> DGC is only reported in September

<sup>3</sup> NFH is only reported in October, November and December

# Lake Shasta Isothermalbaths - 2017 (Water Temperature, in °F)



DATE	Daily Max		7DADM <sup>1</sup>		DAT <sup>2</sup>
	SAC	CCR	SAC	CCR	BSF
12/01	53.1	53.3	53.5	53.7	51.7
12/02	52.8	52.7	53.3	53.5	51.3
12/03	53.0	53.2	53.2	53.4	51.7
12/04	52.6	52.5	53.0	53.1	50.5
12/05	52.8	52.9	52.9	53.0	50.5
12/06	52.9	53.0	52.9	53.0	50.8
12/07	53.1	53.3	52.9	53.0	50.8
12/08	53.1	53.2	52.9	53.0	50.9
12/09	53.1	53.2	52.9	53.0	50.8
12/10	52.8	53.1	52.9	53.0	50.6
12/11	52.6	52.8	52.9	53.1	50.3
12/12	52.7	52.8	52.9	53.1	50.2
12/13	52.3	52.4	52.8	53.0	50.1
12/14	52.7	52.9	52.8	52.9	50.8
12/15	52.2	52.3	52.6	52.8	50.6
12/16	52.3	52.4	52.5	52.7	50.4
12/17	52.2	52.2	52.4	52.5	50.2
12/18	52.2	52.4	52.4	52.5	50.5
12/19	51.6	51.5	52.2	52.3	50.0
12/20	51.9	51.9	52.2	52.2	50.1
12/21	51.4	51.4	52.0	52.0	49.2
12/22	50.8	50.9	51.8	51.8	49.2
12/23	51.5	51.5	51.7	51.7	49.8
12/24	50.9	51.0	51.5	51.5	49.9
12/25	51.4	51.6	51.4	51.4	49.7
12/26	51.5	51.7	51.3	51.4	49.5
12/27	51.4	51.6	51.3	51.4	49.5
12/28	51.2	51.6	51.2	51.4	49.6
12/29	51.3	51.3	51.3	51.5	49.1
12/30	52.0	52.2	51.4	51.6	49.7
12/31	52.5	52.6	51.6	51.8	50.6

**Notes**

<sup>1</sup> 7DADM = 7-Day Average  
Daily Maximum

<sup>2</sup> DAT = Daily Average  
Temperature

