

Northern CVP Water Temperature Report

December - 2016

Page	Description
1	- Mean Daily Water Temperature, Release Flow Rates and Air Temperatures with Monthly Averages
2	- Redding 10-Day Forecasted Air Temperatures
3	- Sacramento River Mean Daily Water Temperature, Air Temperature and 10-Day Forecasted Air Temperature Plot - Water Temperature Measuring Station Details - Temperature Control Point Details
4	- Lake Shasta Isothermalbaths Plot
5	- Daily Maximum and 7DADM
x	- TCD Configuration (External Link)



All Data in this Report is Preliminary and Subject to Change

DATE	Mean Daily Water Temperatures (°F)													Mean Daily Release (CFS)			Mean Daily Air Temperatures (°F)				
	TCD ¹	SHD	SPP ¹	KWK	SAC	CCR	BSF ²	JLF	BND	RDB	IGO	LWS	NFH ³	Shasta Generation	Spring Creek P.P.	Keswick Total	RDD	BSF	RDB	LWS	
Nov	52.5	51.9	57.4	52.3	52.4	52.6	52.7	52.9	52.9	53.1	55.4	50.1	49.7	4420	210	4859	53.5	50.8	53.1	46.3	
12/01	53.2	52.5	55.1	52.0	51.8	51.6	50.7	50.3	50.2	50.1	51.4	47.1	45.7	4122	14	4816	51.0	47.6	50.3	37.5	
12/02	52.9	52.5	54.6	51.8	51.6	51.6	50.6	50.1	49.8	49.6	51.3	46.5	44.7	4181	293	4832	51.0	47.3	49.2	35.4	
12/03	52.8	52.2	55.0	51.8	51.7	51.8	50.9	50.3	50.1	49.8	51.5	46.5	44.0	4630	14	4842	53.0	45.8	49.6	37.1	
12/04	52.7	52.2	54.9	51.9	51.8	51.9	51.1	50.6	50.4	50.0	51.6	46.7	44.8	4570	14	4840	46.5	43.0	43.0	43.4	
12/05	52.6	52.1	54.5	51.7	51.4	51.4	50.7	50.2	50.1	49.8	50.8	46.3	44.6	4123	14	4841	44.0	39.6	42.4	36.0	
12/06	52.7	52.1	53.9	51.5	51.2	51.2	50.1	49.4	49.0	48.8	50.3	45.3	43.3	4054	62	4841	41.5	36.5	38.1	34.3	
12/07	52.5	52.1	53.3	51.1	50.6	50.4	49.4	48.7	48.5	48.1	50.0	44.8	41.2	4088	220	4838	40.5	34.8	37.1	30.7	
12/08	52.3	51.9	53.0	51.2	50.8	50.4	48.5	48.3	48.1	47.7	50.1	44.8	40.8	4979	215	4835	39.0	39.1	38.7	34.5	
12/09	53.4	52.7	53.4	51.3	51.2	51.1	48.3	48.0	47.9	47.7	51.1	45.5	42.5	5086	16	4840	45.0	44.3	44.5	39.3	
12/10	53.9	53.4	52.6	51.4	50.8	51.4	49.3	49.2	49.3	49.2	50.7	45.4	43.9	4720	130	4839	47.5	50.6	53.5	43.4	
12/11	53.9	53.3	53.1	52.1	51.4	51.2	49.0	48.1	48.2	48.6	49.2	45.2	43.4	4126	14	4837	42.5	39.6	42.9	36.1	
12/12	53.7	53.1	52.1	52.3	51.9	51.8	49.9	48.7	48.6	48.2	48.8	45.0	43.0	3453	414	4841	45.0	40.5	43.4	34.3	
12/13	53.5	52.8	51.9	52.2	51.8	51.7	49.9	48.9	48.9	48.7	48.7	44.8	42.7	3964	393	4840	42.5	41.8	43.5	36.1	
12/14	53.2	52.6	51.6	52.2	51.5	51.9	48.9	48.9	48.9	49.0	49.0	44.7	43.0	3960	583	4842	50.0	48.1	49.5	41.3	
12/15	52.9	52.7	51.6	52.1	51.8	52.5	51.6	51.1	51.0	50.7	51.2	45.2	45.3	1657	2090	4997	51.5	54.9	55.2	46.9	
12/16	52.8	52.3	51.4	51.7	51.3	51.8	50.0	49.6	49.8	50.5	48.5	44.5	44.7	2446	2161	4946	46.0	43.6	46.3	35.0	
12/17	52.9	52.0	51.2	51.3	50.6	50.9	47.5	46.5	46.7	47.1	46.6	43.9	42.2	2801	1723	4889	43.5	40.0	40.1	29.5	
12/18	52.7	51.8	50.8	51.0	50.4	50.6	46.8	45.6	45.6	45.4	46.6	43.5	40.8	2871	1674	4891	43.5	42.5	43.0	29.4	
12/19	52.2	51.6	50.5	50.4	50.0	50.4	47.1	45.9	45.8	45.4	46.9	43.4	40.5	2656	1821	4890	41.0	36.1	38.3	31.1	
12/20	51.9	51.2	50.2	50.3	50.1	50.2	47.8	46.8	46.7	46.2	47.4	43.8	41.5	3422	703	4870	45.0	40.9	43.3	35.9	
12/21	52.0	51.3	49.9	50.7	50.6	50.8	49.6	49.0	48.7	48.0	47.5	43.9	42.5	7632	519	9706	58.0	51.3	54.5	35.3	
12/22	51.7	50.9	49.6	50.9	50.6	51.0	49.7	49.1	49.1	49.1	46.4	43.0	41.1	7614	475	9852	47.0	42.2	47.6	31.3	
12/23	51.3	50.6	49.3	50.6	50.1	50.8	48.7	48.8	48.9	49.1	46.5	43.2	40.9	9317	122	9753	43.5	44.6	46.2	35.8	
12/24	51.2	50.5	49.3	50.2	49.8	50.5	48.1	47.7	47.7	47.4	45.8	43.1	40.7	9866	315	9762	41.5	39.8	40.1	31.6	
12/25	51.1	50.3	49.3	49.9	49.4	50.1	47.5	46.9	46.9	46.8	45.0	42.9	40.6	9186	152	9760	35.0	31.0	35.0	30.4	
12/26	51.0	50.2	48.8	49.8	49.3	50.0	47.4	46.6	46.5	46.0	44.7	42.3	39.7	9346	200	9762	↓	37.5	32.6	36.6	28.5
12/27	50.7	50.0	48.5	49.8	49.5	50.0	48.1	47.4	47.3	46.8	45.6	42.4	39.8	8207	1049	9825	43.0	38.2	41.3	33.4	
12/28	50.7	49.9	48.4	49.6	49.4	50.0	48.3	47.8	47.7	47.4	45.6	42.8	41.0	8682	353	9839	46.0	40.5	45.5	35.3	
12/29	50.5	49.8	48.3	49.5	49.3	49.8	48.4	48.0	47.9	47.7	45.4	42.9	41.1	9191	164	9836	47.5	41.1	44.7	34.2	
12/30	50.4	49.6	48.2	49.6	49.4	50.0	48.5	48.1	48.0	47.8	45.2	43.2	41.2	8429	82	8527	44.0	41.4	44.5	35.3	
12/31	50.3	49.5	48.0	49.5	49.3	50.0	48.7	48.4	48.4	48.4	45.4	42.9	41.8	7462	25	7175	47.5	44.0	47.5	35.9	
Dec	52.2	51.6	51.4	51.0	50.7	50.9	49.1	48.5	48.4	48.2	48.2	44.4	42.4	5511	517	6484	45.2	42.0	44.4	35.3	

Total CFS	170841	16024	201004
Total AF	338856	31783	398683

Legend

- ? = 1-9 hours of data missing (Average includes estimations)
- ! = 10 or more hours of data missing (Average not calculated)
- # = Station out of service
- ↑ = Record high air temperature
- ↓ = Record low air temperature
- ☐ = Monthly Averages

Notes

- ¹ Temperatures are weighted averages based on individual penstock flow and temperature
- Highlighted cells in the TCD column indicate a TCD change was made on that day
- ² Current control point (see page 3 for more details)
- ³ NFH is only reported in October, November and December

D A T E	Redding (RDD) Daily Air Temperatures (°F)																																			
	Actual			Forecasted																																
	Previous Day			Current Day			1 Day			2 Days			3 Days			4 Days			5 Days			6 Days			7 Days			8 Days			9 Days			10 Days		
	↓	↑	Avg	↓	↑	Avg	↓	↑	Avg	↓	↑	Avg	↓	↑	Avg	↓	↑	Avg	↓	↑	Avg	↓	↑	Avg	↓	↑	Avg	↓	↑	Avg	↓	↑	Avg	↓	↑	Avg
12/01	39	55	47.0	45	56	50.5	37	59	48.0	40	65	52.5	41	59	50.0	33	53	43.0	29	48	38.5	30	51	40.5	42	51	46.5	40	55	47.5	38	56	47.0	35	56	45.5
12/02	44	58	51.0	43	59	51.0	40	66	53.0	39	59	49.0	35	52	43.5	32	49	40.5	27	52	39.5	33	51	42.0	42	56	49.0	45	58	51.5	40	62	51.0	41	60	50.5
12/03	42	60	51.0	41	63	52.0	40	61	50.5	38	54	46.0	33	53	43.0	30	54	42.0	35	54	44.5	40	52	46.0	40	58	49.0	36	59	47.5	40	58	49.0	42	57	49.5
12/04	38	68	53.0	39	57	48.0	38	51	44.5	35	48	41.5	31	48	39.5	37	48	42.5	41	53	47.0	37	52	44.5	41	55	48.0	42	58	50.0	38	58	48.0	38	56	47.0
12/05	38	55	46.5	32	53	42.5	32	49	40.5	30	49	39.5	35	50	42.5	42	52	47.0	39	50	44.5	41	48	44.5	38	58	48.0	39	55	47.0	37	56	46.5	39	57	48.0
12/06	31	57	44.0	30	50	40.0	29	47	38.0	36	47	41.5	42	55	48.5	43	52	47.5	39	51	45.0	38	51	44.5	47	57	52.0	47	59	53.0	48	56	52.0	38	51	44.5
12/07	29	54	41.5	34	47	40.5	36	49	42.5	43	54	48.5	42	55	48.5	38	52	45.0	39	50	44.5	42	53	47.5	49	61	55.0	50	56	53.0	42	54	48.0	36	52	44.0
12/08	33	48	40.5	34	48	41.0	43	54	48.5	42	54	48.0	38	52	45.0	36	52	44.0	41	54	47.5	42	57	49.5	43	55	49.0	45	55	50.0	42	54	48.0	36	53	44.5
12/09	35	43	39.0	43	51	47.0	45	49	47.0	35	52	43.5	36	51	43.5	38	52	45.0	41	54	47.5	43	55	49.0	33	50	41.5	30	47	38.5	26	50	38.0	29	54	41.5
12/10	43	47	45.0	37	57	47.0	34	52	43.0	36	52	44.0	38	52	45.0	42	51	46.5	35	50	42.5	35	49	42.0	37	49	43.0	27	49	38.0	27	51	39.0	31	56	43.5
12/11	37	58	47.5	32	52	42.0	36	51	43.5	38	47	42.5	42	50	46.0	44	53	48.5	34	47	40.5	34	42	38.0	33	53	43.0	34	56	45.0	37	53	45.0	37	56	46.5
12/12	32	53	42.5	33	54	43.5	33	51	42.0	43	53	48.0	49	54	51.5	36	48	42.0	30	48	39.0	30	52	41.0	34	55	44.5	36	59	47.5	41	58	49.5	43	56	49.5
12/13	32	58	45.0	36	52	44.0	44	56	50.0	51	54	52.5	34	50	42.0	28	48	38.0	29	50	39.5	32	53	42.5	35	58	46.5	40	60	50.0	39	59	49.0	38	58	48.0
12/14	36	49	42.5	44	57	50.5	49	54	51.5	35	51	43.0	29	50	39.5	27	50	38.5	34	55	44.5	35	48	41.5	34	55	44.5	40	57	48.5	38	58	48.0	33	55	44.0
12/15	44	56	50.0	47	57	52.0	36	49	42.5	29	50	39.5	27	52	39.5	33	52	42.5	34	50	42.0	36	53	44.5	36	59	47.5	35	57	46.0	36	54	45.0	35	50	42.5
12/16	47	56	51.5	45	49	47.0	31	51	41.0	29	55	42.0	33	55	44.0	36	55	45.5	38	56	47.0	36	53	44.5	31	52	41.5	34	54	44.0	37	53	45.0	34	56	45.0
12/17	38	54	46.0	35	49	42.0	31	53	42.0	33	56	44.5	36	57	46.5	37	58	47.5	37	53	45.0	35	51	43.0	36	57	46.5	39	59	49.0	40	60	50.0	38	58	48.0
12/18	35	52	43.5	34	53	43.5	29	54	41.5	33	56	44.5	38	58	48.0	37	54	45.5	38	53	45.5	35	53	44.0	34	56	45.0	38	56	47.0	37	55	46.0	38	53	45.5
12/19	34	53	43.5	28	54	41.0	33	57	45.0	37	61	49.0	35	55	45.0	37	52	44.5	37	51	44.0	34	49	41.5	36	57	46.5	34	61	47.5	40	65	52.5	41	61	51.0
12/20	28	54	41.0	31	56	43.5	38	60	49.0	35	55	45.0	39	49	44.0	38	52	45.0	33	50	41.5	35	50	42.5	42	50	46.0	40	52	46.0	33	53	43.0	38	53	45.5
12/21	31	59	45.0	54	59	56.5	35	56	45.5	39	50	44.5	37	48	42.5	30	48	39.0	30	51	40.5	35	52	43.5	34	55	44.5	39	54	46.5	35	56	45.5	36	57	46.5
12/22	51	65	58.0	34	61	47.5	39	50	44.5	34	48	41.0	27	47	37.0	29	48	38.5	35	51	43.0	36	53	44.5	37	58	47.5	38	58	48.0	39	61	50.0	40	56	48.0
12/23	33	61	47.0	44	49	46.5	34	48	41.0	29	46	37.5	30	49	39.5	33	50	41.5	36	54	45.0	36	55	45.5	32	59	45.5	36	60	48.0	38	61	49.5	38	58	48.0
12/24	39	48	43.5	NR	48	NR	28	45	36.5	27	48	37.5	31	51	41.0	35	56	45.5	37	58	47.5	35	55	45.0	37	61	49.0	41	58	49.5	38	55	46.5	38	55	46.5
12/25	32	51	41.5	27	46	36.5	27	50	38.5	28	53	40.5	35	58	46.5	37	58	47.5	39	55	47.0	36	56	46.0	35	56	45.5	36	50	43.0	32	50	41.0	31	53	42.0
12/26	26	44	35.0	24	51	37.5	28	53	40.5	36	59	47.5	38	61	49.5	37	56	46.5	38	52	45.0	35	49	42.0	35	50	42.5	25	47	36.0	27	52	39.5	32	55	43.5
12/27	23	52	37.5	30	53	41.5	33	60	46.5	36	61	48.5	33	56	44.5	37	52	44.5	34	47	40.5	33	44	38.5	40	50	45.0	37	50	43.5	32	52	42.0	34	52	43.0
12/28	30	56	43.0	29	59	44.0	32	61	46.5	32	56	44.0	38	54	46.0	35	48	41.5	33	46	39.5	31	47	39.0	31	57	44.0	32	56	44.0	32	55	43.5	35	51	43.0
12/29	30	62	46.0	31	63	47.0	34	57	45.5	38	55	46.5	32	48	40.0	30	42	36.0	29	43	36.0	26	45	35.5	30	51	40.5	31	53	42.0	30	52	41.0	34	54	44.0
12/30	30	65	47.5	30	57	43.5	38	56	47.0	30	48	39.0	29	41	35.0	29	41	35.0	24	43	33.5	24	47	35.5	29	48	38.5	33	50	41.5	28	52	40.0	35	56	45.5
12/31	29	59	44.0	NR	57	NR	31	47	39.0	30	43	36.5	31	43	37.0	28	34	31.0	31	37	34.0	31	41	36.0	38	48	43.0	41	55	48.0	38	59	48.5	42	55	48.5

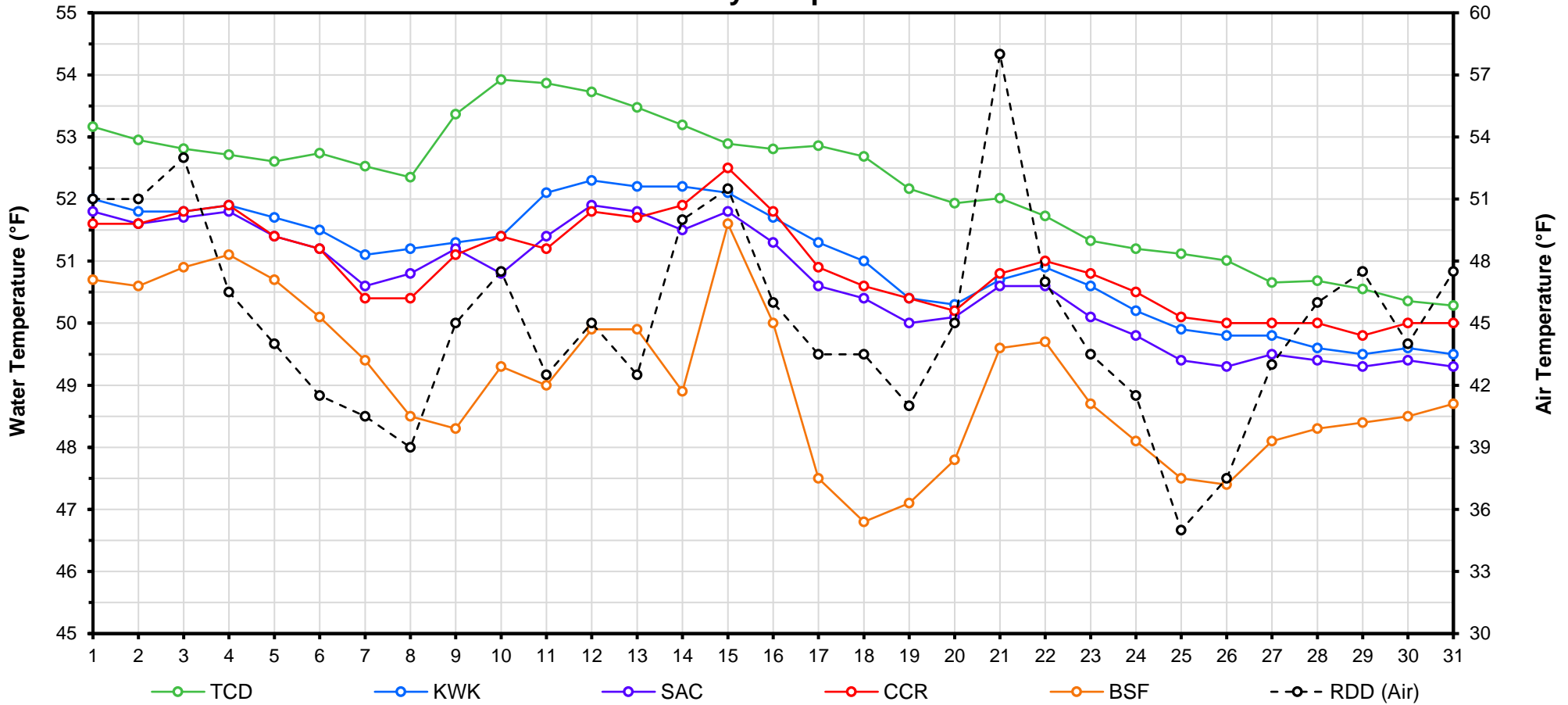
Web Links

- [10-Day Min/Max Forecast](#)
- [Previous Days Min/Max Actuals](#)

Legend

- NR = Forecasted temperatures not recorded
- 100** = Previous day actual temperatures in red and bolded indicate a record temperature for that date

Mean Daily Temperatures



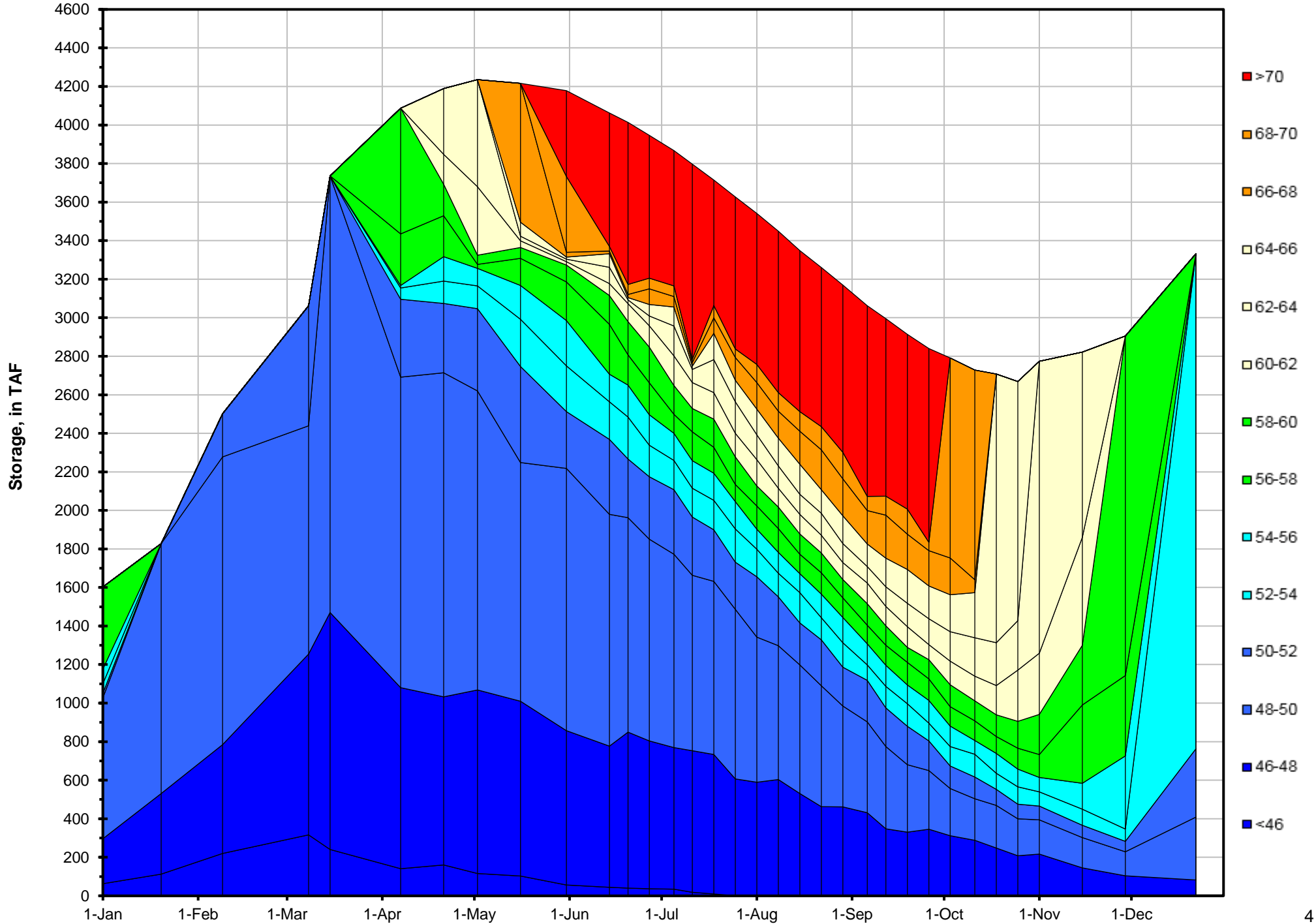
Station Details			
Code	Body of Water	Location ¹	CDEC Link
TCD	N/A	Shasta Power Plant	N/A
SHD	Sacramento River	0.3 miles downstream of Shasta Power Plant	Click Here
SPP	N/A	Spring Creek Power Plant	N/A
KWK	Sacramento River	0.8 miles downstream of Keswick Dam	Click Here
SAC	Sacramento River	4.8 miles downstream of Keswick Dam	Click Here
CCR	Sacramento River	9.7 miles downstream of Keswick Dam	Click Here
BSF	Sacramento River	25 miles downstream of Keswick Dam	Click Here
JLF	Sacramento River	34 miles downstream of Keswick Dam	Click Here
BND	Sacramento River	41 miles downstream of Keswick Dam	Click Here
RDB	Sacramento River	58 miles downstream of Keswick Dam	Click Here
IGO	Clear Creek	7.3 miles downstream of Whiskeytown Dam	Click Here
LWS	Trinity River	1.1 miles downstream of Lewiston Dam	Click Here
DGC ²	Trinity River	19 miles downstream of Lewiston Dam	Click Here
NFH ³	Trinity River	38 miles downstream of Lewiston Dam	Click Here

Temperature Control Point		
Point	Temp. (°F)	Date Range
BSF	56.0	6/17 - Current

Notes

- ¹ Distances are approximate
- ² DGC is only reported in September
- ³ NFH is only reported in October, November and December

Lake Shasta Isothermalbaths - 2016 (Water Temperature, in °F)



DATE	Daily Max		7DADM ¹		DAT ²
	SAC	CCR	SAC	CCR	BSF
12/01	52.9	52.4	52.8	52.6	50.7
12/02	52.6	52.3	52.8	52.6	50.6
12/03	52.9	52.8	52.9	52.7	50.9
12/04	52.5	52.7	52.8	52.7	51.1
12/05	52.4	52.4	52.8	52.6	50.7
12/06	52.6	52.7	52.7	52.6	50.1
12/07	51.1	50.9	52.4	52.3	49.4
12/08	51.0	50.8	52.2	52.1	48.5
12/09	51.5	51.5	52.0	52.0	48.3
12/10	51.4	51.9	51.8	51.8	49.3
12/11	52.5	52.2	51.8	51.8	49.0
12/12	52.9	52.7	51.9	51.8	49.9
12/13	52.1	52.1	51.8	51.7	49.9
12/14	51.9	52.4	51.9	51.9	48.9
12/15	52.1	52.7	52.1	52.2	51.6
12/16	52.1	52.6	52.1	52.4	50.0
12/17	51.5	51.7	52.2	52.3	47.5
12/18	51.3	51.5	52.0	52.2	46.8
12/19	50.8	51.5	51.7	52.1	47.1
12/20	50.7	50.9	51.5	51.9	47.8
12/21	51.3	51.5	51.4	51.8	49.6
12/22	51.3	51.6	51.3	51.6	49.7
12/23	50.5	51.1	51.1	51.4	48.7
12/24	50.5	51.1	50.9	51.3	48.1
12/25	50.0	50.5	50.7	51.2	47.5
12/26	50.0	50.7	50.6	51.1	47.4
12/27	50.2	50.6	50.5	51.0	48.1
12/28	50.2	50.7	50.4	50.9	48.3
12/29	50.1	50.6	50.2	50.8	48.4
12/30	50.1	50.7	50.2	50.7	48.5
12/31	50.1	50.6	50.1	50.6	48.7

Notes

¹ 7DADM = 7-Day Average
Daily Maximum

² DAT = Daily Average
Temperature

