

Northern CVP Water Temperature Report

November - 2020

Page	Description
2	- Mean Daily Water Temperature, Release Flow Rates and Air Temperatures with Monthly Averages
3	- Redding 10-Day Forecasted Air Temperatures
4	- Sacramento River Mean Daily Water Temperature, Air Temperature and 10-Day Forecasted Air Temperature Plot - Water Temperature Measuring Station Details - Temperature Control Point Details
5	- Shasta Lake Isothermobaths & Cold Water Pool Statistics
14	- Trinity Lake Isothermobaths & Cold Water Pool Statistics
23	- Whiskeytown Lake Isothermobaths & Cold Water Pool Statistics
x	- TCD Configuration (External Link)



— BUREAU OF —
RECLAMATION

All Data in this Report is Preliminary and Subject to Change

DATE	Mean Daily Water Temperatures (°F)														Mean Daily Release (CFS)			Mean Daily Air Temperatures (°F)			
	TCD ¹	SHD	SPP ¹	KWK	SAC	CCR ²	BSF	JLF	BND	RDB	IGO ³	LWS	DGC	NFH	Shasta Generation	Spring Creek P.P.	Keswick Total	RDD	BSF	RDB	
Oct	54.1	53.6	54.8	54.0	54.4	54.8	55.3	55.9	56.4	56.9	54.8	49.6	51.1	53.3	4797	763	5762	70.4	63.8	67.2	
11/01	54.8	54.8	54.9	54.2	54.3	54.6	54.5	54.8	55.1	55.1	53.7	48.7	48.2	49.3	4246	372	5015	62.5	55.0	59.1	
11/02	54.7	54.3	55.0	54.4	54.4	54.8	54.7	54.9	55.1	55.2	53.7	48.7	48.3	49.3	4816	388	5014	↑	64.0	55.2	61.2
11/03	54.8	54.5	54.8	54.3	54.4	54.8	54.7	55.0	55.2	55.2	53.6	48.6	48.0	49.1	4455	393	5008	60.5	54.0	58.6	
11/04	54.9	54.5	54.8	54.4	54.4	54.8	54.7	54.9	55.2	55.3	53.8	48.8	48.5	49.7	4646	465	5019	64.5	55.1	59.6	
11/05	55.1	55.0	55.7	54.5	54.6	55.0	54.9	55.2	55.4	55.5	54.3	48.8	49.1	50.3	4374	40	4816	64.0	58.3	62.1	
11/06	55.2	55.1	54.9	54.6	54.5	54.8	55.1	55.5	55.8	55.7	53.7	48.6	50.1	50.8	3913	130	4812	56.0	56.0	56.7	
11/07	55.4	55.0	55.2	54.5	54.4	54.5	54.0	54.0	54.2	54.4	53.3	48.4	47.6	49.3	4138	207	4816	49.5	47.3	50.1	
11/08	55.0	? 54.7	55.8	54.3	54.1	54.0	53.2	53.2	53.2	53.1	52.2	48.2	46.0	47.0	4867	57	4814	46.5	44.6	49.2	
11/09	55.1	? 54.8	55.1	54.2	53.9	53.6	52.6	52.1	52.0	51.6	52.3	47.9	43.8	44.2	5010	134	4811	46.0	45.7	47.4	
11/10	55.2	54.9	56.0	53.9	53.7	53.6	52.8	52.2	52.0	51.4	52.2	48.0	44.3	44.7	4961	40	4813	↓	44.5	41.2	43.8
11/11	55.3	55.0	55.3	53.8	53.6	53.5	52.6	52.0	51.9	51.5	52.1	47.4	44.8	44.5	4621	75	4812	↓	45.0	40.2	43.9
11/12	55.3	55.1	55.2	54.0	53.6	53.5	52.5	52.0	51.9	51.4	52.2	46.7	43.8	43.8	4485	83	4809	↓	42.5	40.2	44.6
11/13	55.2	? 54.9	54.8	54.1	53.7	53.6	52.9	52.4	52.5	51.6	52.6	46.6	44.9	44.5	4102	303	4805	46.5	46.5	48.4	
11/14	55.4	? 55.2	54.8	54.1	53.9	54.0	53.4	52.9	52.8	52.2	52.5	46.5	45.0	45.4	4376	192	4804	45.0	46.8	48.0	
11/15	55.3	? 54.9	55.2	54.4	54.1	54.2	54.0	53.8	54.0	53.3	53.0	46.6	47.3	47.4	4412	105	4812	52.0	51.2	48.5	
11/16	55.3	? 54.9	54.8	54.6	54.5	54.7	54.2	53.8	53.9	53.6	52.8	46.5	48.0	49.0	4766	42	4815	56.5	49.8	53.4	
11/17	55.0	54.5	54.8	54.5	54.3	54.4	54.1	53.9	54.2	53.8	52.4	46.4	47.3	48.6	5271	41	4612	51.0	50.9	52.1	
11/18	55.2	54.5	55.2	54.5	54.5	54.8	54.7	54.8	55.0	54.5	52.8	46.4	47.5	48.6	4055	38	4423	55.0	56.0	56.3	
11/19	55.4	54.9	54.5	54.3	54.3	54.5	54.0	53.9	54.1	54.3	51.8	46.3	47.0	48.2	4123	278	4407	52.0	49.5	51.3	
11/20	55.6	55.2	54.7	54.2	54.0	54.1	53.4	53.1	53.2	53.2	51.5	46.1	45.9	46.9	4006	258	4411	57.0	45.5	51.3	
11/21	55.6	55.3	54.6	54.2	54.0	54.1	53.2	52.7	52.6	52.3	51.3	46.0	44.3	45.0	3513	562	4404	60.0	45.5	51.3	
11/22	55.5	55.1	54.9	54.3	54.0	53.9	53.1	52.6	52.6	52.2	51.0	46.0	43.9	44.1	3799	114	4221	46.5	45.1	48.5	
11/23	55.4	55.0	55.0	54.3	54.2	54.3	53.6	53.1	53.0	52.5	51.2	46.1	44.6	44.9	3628	43	4014	52.0	48.6	51.3	
11/24	55.4	54.9	54.6	54.3	54.2	54.3	53.6	53.3	53.2	52.9	51.2	46.0	45.2	45.3	3794	63	4010	58.0	52.7	54.3	
11/25	55.1	54.5	54.9	54.2	54.1	54.1	53.6	53.2	53.1	52.9	50.9	45.8	44.1	45.3	3814	40	4010	49.5	47.2	50.8	
11/26	55.2	54.5	54.2	54.1	53.9	53.8	52.7	52.2	52.1	52.1	50.4	45.6	43.4	43.9	3868	97	3934	50.0	48.3	51.2	
11/27	55.1	54.4	54.4	53.9	53.7	53.7	52.6	52.0	51.6	51.3	50.4	45.3	42.7	42.5	4060	41	3861	53.0	44.6	49.4	
11/28	54.9	54.3	53.8	53.8	53.6	53.5	52.4	51.7	51.5	51.2	50.0	45.2	42.6	42.0	3350	41	3850	48.5	42.3	46.7	
11/29	54.8	54.2	53.3	53.7	53.5	53.3	52.2	51.7	51.3	51.0	50.1	45.1	42.7	42.0	3651	41	3862	47.5	42.4	45.7	
11/30	54.7	54.0	53.1	53.6	53.4	53.3	52.1	51.6	51.3	51.0	49.8	45.0	42.8	42.3	3910	73	3827	46.5	43.0	47.5	
-																					
Nov	55.2	54.8	54.8	54.2	54.1	54.1	53.5	53.3	53.3	53.0	52.1	46.9	45.7	46.3	4234	159	4521	52.4	48.3	51.4	
															Total CFS	127030	4756	135641			
															Total AF	251959	9433	269038			

Legend

- ? = 1-9 hours of data missing (Average includes estimations)
- ! = 10 or more hours of data missing (Average not calculated)
- # = Station out of service
- ↑ = Record high air temperature
- ↓ = Record low air temperature
- ☐ = Monthly Averages

Notes

- ¹ Temperatures are weighted averages based on individual penstock flow and temperature
- Highlighted cells in the TCD column indicate a TCD change was made on that day
- ² Current Sacramento River control point (see page 4 for more details)

DATE	Redding (RDD) Daily Air Temperatures (°F)																																					
	Actual			Forecasted																																		
	Previous Day			Current Day			1 Day			2 Days			3 Days			4 Days			5 Days			6 Days			7 Days			8 Days			9 Days			10 Days				
	↓	↑	Avg	↓	↑	Avg	↓	↑	Avg	↓	↑	Avg	↓	↑	Avg	↓	↑	Avg	↓	↑	Avg	↓	↑	Avg	↓	↑	Avg	↓	↑	Avg	↓	↑	Avg	↓	↑	Avg		
11/01	40	86	63.0	42	85	63.5	44	84	64.0	45	80	62.5	46	83	64.5	48	83	65.5	46	65	55.5	36	60	48.0	35	61	48.0	40	60	50.0	35	60	47.5	37	66	51.5		
11/02	42	83	62.5	41	85	63.0	43	80	61.5	44	79	61.5	47	82	64.5	43	60	51.5	36	60	48.0	33	59	46.0	45	61	53.0	36	65	50.5	41	67	54.0	44	65	54.5		
11/03	41	87	64.0	42	80	61.0	44	80	62.0	47	83	65.0	42	59	50.5	33	58	45.5	30	57	43.5	32	59	45.5	34	65	49.5	45	61	53.0	41	63	52.0	40	64	52.0		
11/04	41	80	60.5	44	80	62.0	47	85	66.0	46	58	52.0	35	58	46.5	33	57	45.0	33	60	46.5	34	62	48.0	36	62	49.0	41	64	52.5	38	63	50.5	39	65	52.0		
11/05	43	86	64.5	46	83	64.5	45	58	51.5	35	57	46.0	33	56	44.5	32	58	45.0	33	58	45.5	34	59	46.5	42	61	51.5	40	60	50.0	43	63	53.0	43	61	52.0		
11/06	45	83	64.0	55	60	57.5	39	61	50.0	31	56	43.5	32	59	45.5	31	59	45.0	31	59	45.0	32	55	43.5	46	59	52.5	43	64	53.5	44	62	53.0	41	57	49.0		
11/07	44	68	56.0	38	61	49.5	28	55	41.5	30	57	43.5	30	60	45.0	29	60	44.5	31	57	44.0	36	54	45.0	45	59	52.0	48	64	56.0	45	61	53.0	46	60	53.0		
11/08	38	61	49.5	38	55	46.5	32	56	44.0	30	62	46.0	29	61	45.0	30	58	44.0	33	57	45.0	36	57	46.5	49	65	57.0	47	59	53.0	44	59	51.5	41	59	50.0		
11/09	37	56	46.5	41	60	50.5	30	62	46.0	30	61	45.5	30	57	43.5	37	52	44.5	36	56	46.0	37	57	47.0	43	56	49.5	44	57	50.5	41	58	49.5	41	62	51.5		
11/10	37	55	46.0	29	60	44.5	30	60	45.0	31	57	44.0	37	56	46.5	43	58	50.5	37	58	47.5	42	58	50.0	45	62	53.5	41	61	51.0	40	60	50.0	42	63	52.5		
11/11	29	60	44.5	28	61	44.5	28	57	42.5	36	51	43.5	38	61	49.5	37	61	49.0	39	65	52.0	41	65	53.0	43	64	53.5	45	64	54.5	41	65	53.0	39	64	51.5		
11/12	26	64	45.0	29	62	45.5	35	48	41.5	35	57	46.0	40	60	50.0	40	68	54.0	42	66	54.0	46	64	55.0	41	64	52.5	41	62	51.5	38	61	49.5	36	63	49.5		
11/13	25	60	42.5	29	48	38.5	33	54	43.5	39	55	47.0	40	66	53.0	41	63	52.0	44	62	53.0	42	62	52.0	44	60	52.0	42	63	52.5	39	60	49.5	38	61	49.5		
11/14	43	50	46.5	41	54	47.5	38	56	47.0	39	64	51.5	45	56	50.5	45	57	51.0	39	59	49.0	36	59	47.5	39	64	51.5	37	61	49.0	37	58	47.5	39	60	49.5		
11/15	41	49	45.0	49	56	52.5	38	67	52.5	40	55	47.5	44	57	50.5	38	59	48.5	35	61	48.0	34	63	48.5	41	60	50.5	39	62	50.5	42	62	52.0	40	64	52.0		
11/16	48	56	52.0	41	68	54.5	44	55	49.5	45	57	51.0	39	58	48.5	36	61	48.5	36	63	49.5	39	59	49.0	42	56	49.0	47	60	53.5	44	61	52.5	39	59	49.0		
11/17	41	72	56.5	46	55	50.5	46	57	51.5	39	56	47.5	35	60	47.5	33	61	47.0	31	58	44.5	34	59	46.5	42	66	54.0	46	60	53.0	41	58	49.5	37	59	48.0		
11/18	45	57	51.0	56	58	57.0	38	56	47.0	34	62	48.0	33	63	48.0	35	60	47.5	37	62	49.5	39	64	51.5	43	67	55.0	44	67	55.5	44	65	54.5	41	60	50.5		
11/19	47	63	55.0	42	58	50.0	36	63	49.5	34	65	49.5	33	61	47.0	37	61	49.0	37	65	51.0	36	61	48.5	44	68	56.0	40	65	52.5	38	63	50.5	38	63	50.5		
11/20	42	62	52.0	48	64	56.0	34	66	50.0	32	61	46.5	35	61	48.0	37	63	50.0	35	60	47.5	35	62	48.5	41	68	54.5	38	64	51.0	37	64	50.5	35	65	50.0		
11/21	48	66	57.0	52	66	59.0	32	61	46.5	34	63	48.5	38	65	51.5	36	58	47.0	35	59	47.0	36	63	49.5	37	66	51.5	35	62	48.5	36	62	49.0	37	62	49.5		
11/22	51	69	60.0	35	61	48.0	35	62	48.5	38	65	51.5	34	58	46.0	36	58	47.0	36	61	48.5	36	62	49.0	37	68	52.5	37	64	50.5	40	63	51.5	40	62	51.0		
11/23	34	59	46.5	39	61	50.0	38	64	51.0	35	57	46.0	35	59	47.0	35	62	48.5	31	62	46.5	32	63	47.5	39	68	53.5	35	64	49.5	37	63	50.0	40	60	50.0		
11/24	38	66	52.0	50	67	58.5	36	57	46.5	36	61	48.5	36	63	49.5	34	64	49.0	32	63	47.5	34	63	48.5	38	69	53.5	36	65	50.5	39	65	52.0	40	62	51.0		
11/25	47	69	58.0	40	58	49.0	35	61	48.0	36	63	49.5	35	63	49.0	35	62	48.5	32	58	45.0	34	63	48.5	38	60	49.0	40	63	51.5	41	64	52.5	41	62	51.5		
11/26	37	62	49.5	37	63	50.0	35	63	49.0	32	64	48.0	32	63	47.5	33	59	46.0	35	64	49.5	34	64	49.0	36	65	50.5	35	63	49.0	36	63	49.5	36	60	48.0		
11/27	37	63	50.0	35	64	49.5	31	64	47.5	33	64	48.5	33	62	47.5	36	65	50.5	35	65	50.0	34	65	49.5	34	67	50.5	36	63	49.5	33	61	47.0	34	60	47.0		
11/28	35	71	53.0	31	63	47.0	33	64	48.5	33	60	46.5	37	64	50.5	34	67	50.5	37	65	51.0	37	68	52.5	39	69	54.0	38	62	50.0	37	60	48.5	35	62	48.5		
11/29	30	67	48.5	31	67	49.0	32	65	48.5	37	66	51.5	35	67	51.0	36	65	50.5	36	66	51.0	37	66	51.5	39	65	52.0	45	66	55.5	42	66	54.0	40	65	52.5		
11/30	30	65	47.5	30	63	46.5	37	66	51.5	35	68	51.5	35	67	51.0	35	66	50.5	33	66	49.5	33	66	49.5	42	68	55.0	38	66	52.0	39	64	51.5	37	59	48.0		
-																																						

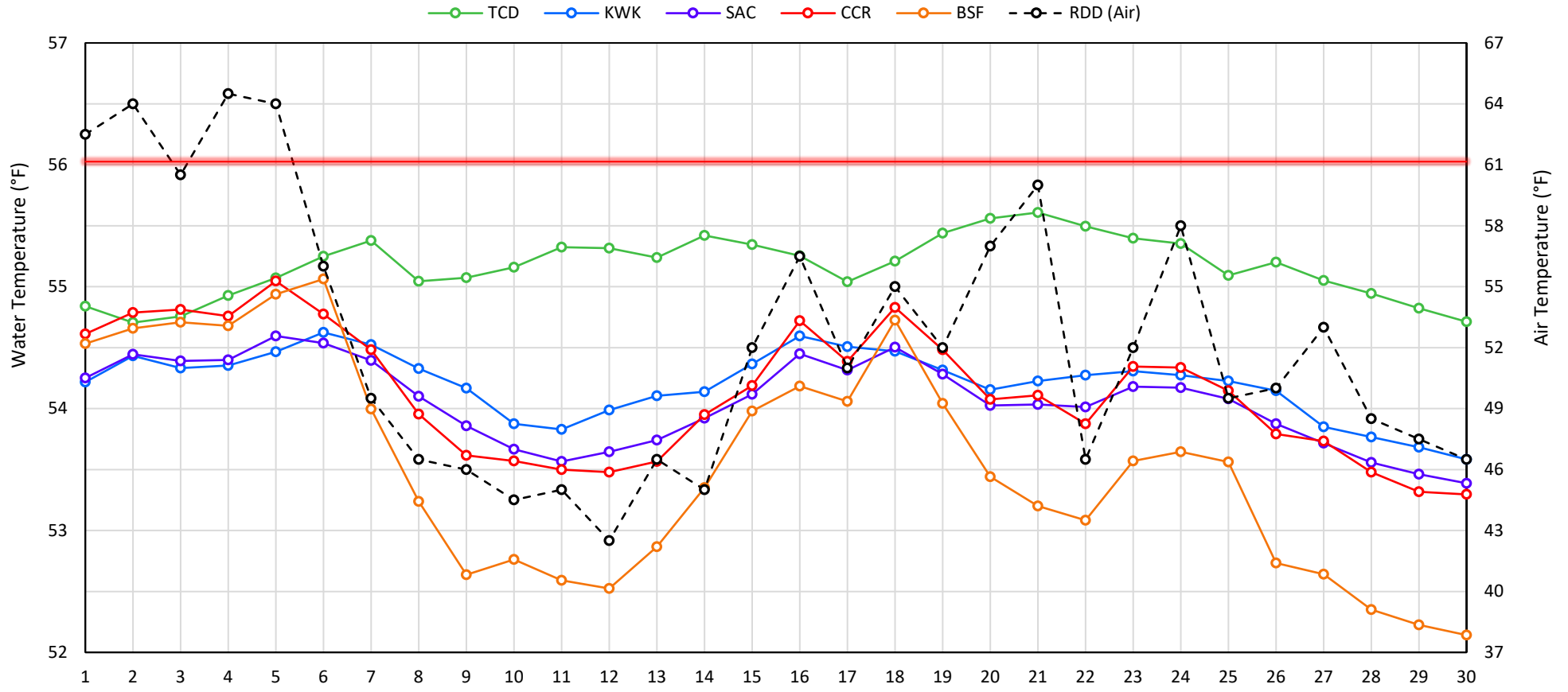
Web Links

- [10-Day Min/Max Forecast](#)
- [Previous Days Min/Max Actuals](#)

Legend

- NR = Forecasted temperatures not recorded
- 100** = Previous day actual temperatures in red and bolded indicate a record temperature for that date

Mean Daily Temperatures



Station Details

Code	Body of Water	Location ¹	CDEC Link
TCD	N/A	Shasta Power Plant	N/A
SHD	Sacramento River	0.3 miles downstream of Shasta Power Plant	Click Here
SPP	N/A	Spring Creek Power Plant	N/A
KWK	Sacramento River	0.8 miles downstream of Keswick Dam	Click Here
SAC	Sacramento River	4.8 miles downstream of Keswick Dam	Click Here
CCR	Sacramento River	9.7 miles downstream of Keswick Dam	Click Here
BSF	Sacramento River	25 miles downstream of Keswick Dam	Click Here
JLF	Sacramento River	34 miles downstream of Keswick Dam	Click Here
BND	Sacramento River	41 miles downstream of Keswick Dam	Click Here
RDB	Sacramento River	58 miles downstream of Keswick Dam	Click Here
IGO	Clear Creek	7.3 miles downstream of Whiskeytown Dam	Click Here
LWS	Trinity River	1.1 miles downstream of Lewiston Dam	Click Here
DGC	Trinity River	19 miles downstream of Lewiston Dam	Click Here
NFH	Trinity River	38 miles downstream of Lewiston Dam	Click Here

Water Right Temperature Control Points

River	Point	Temp. (°F)	Begin Date	End Date
Sacramento	BSF	56	05/15/2019	09/20/2020
Sacramento	CCR	56	09/21/2020	TBD
Trinity	DGC	56	09/15/2020	10/01/2020
Trinity	NFH	56	10/01/2020	12/31/2020

Notes

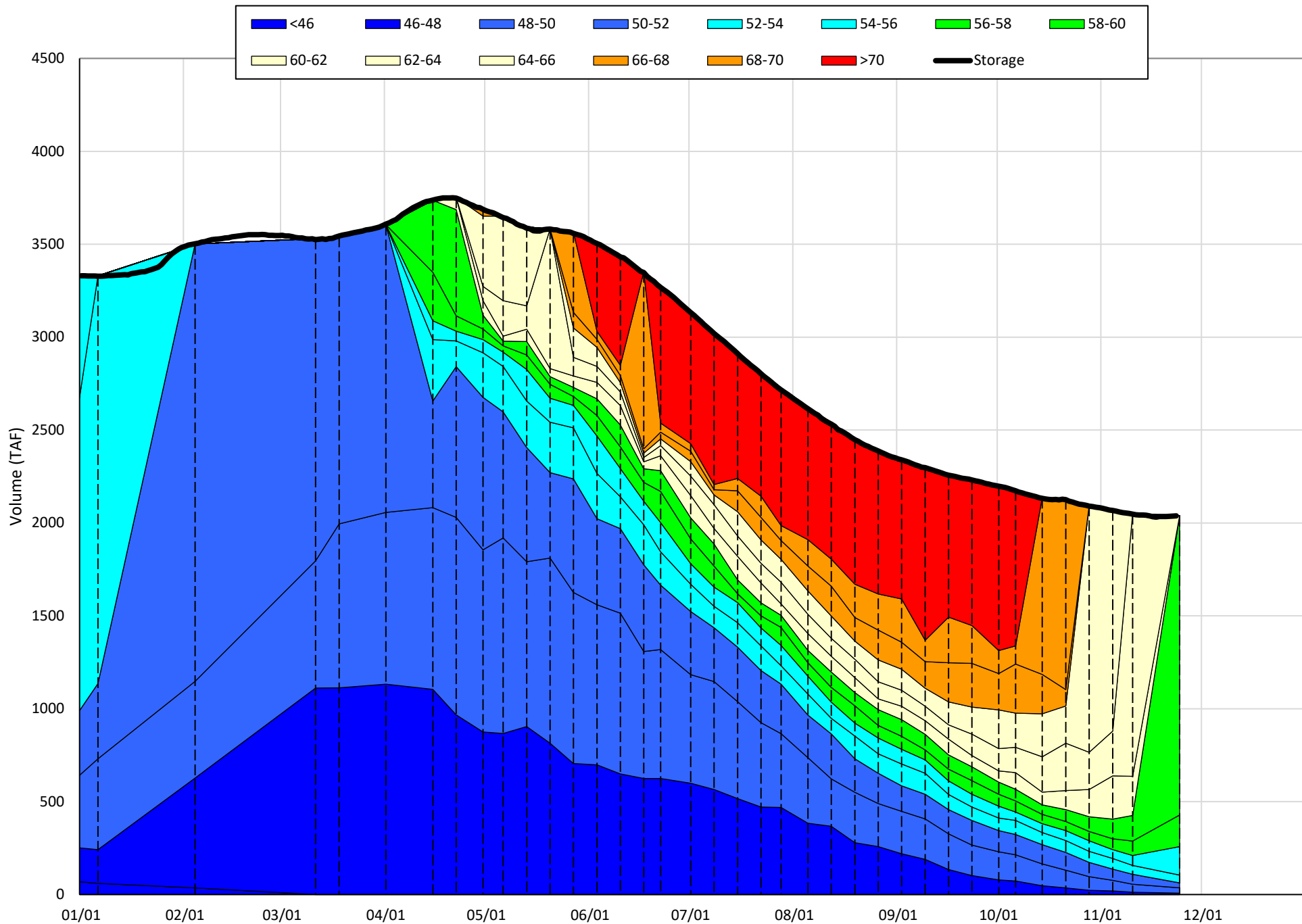
¹ Distances are approximate

Shasta Lake Isothermobaths & Cold Water Pool Statistics

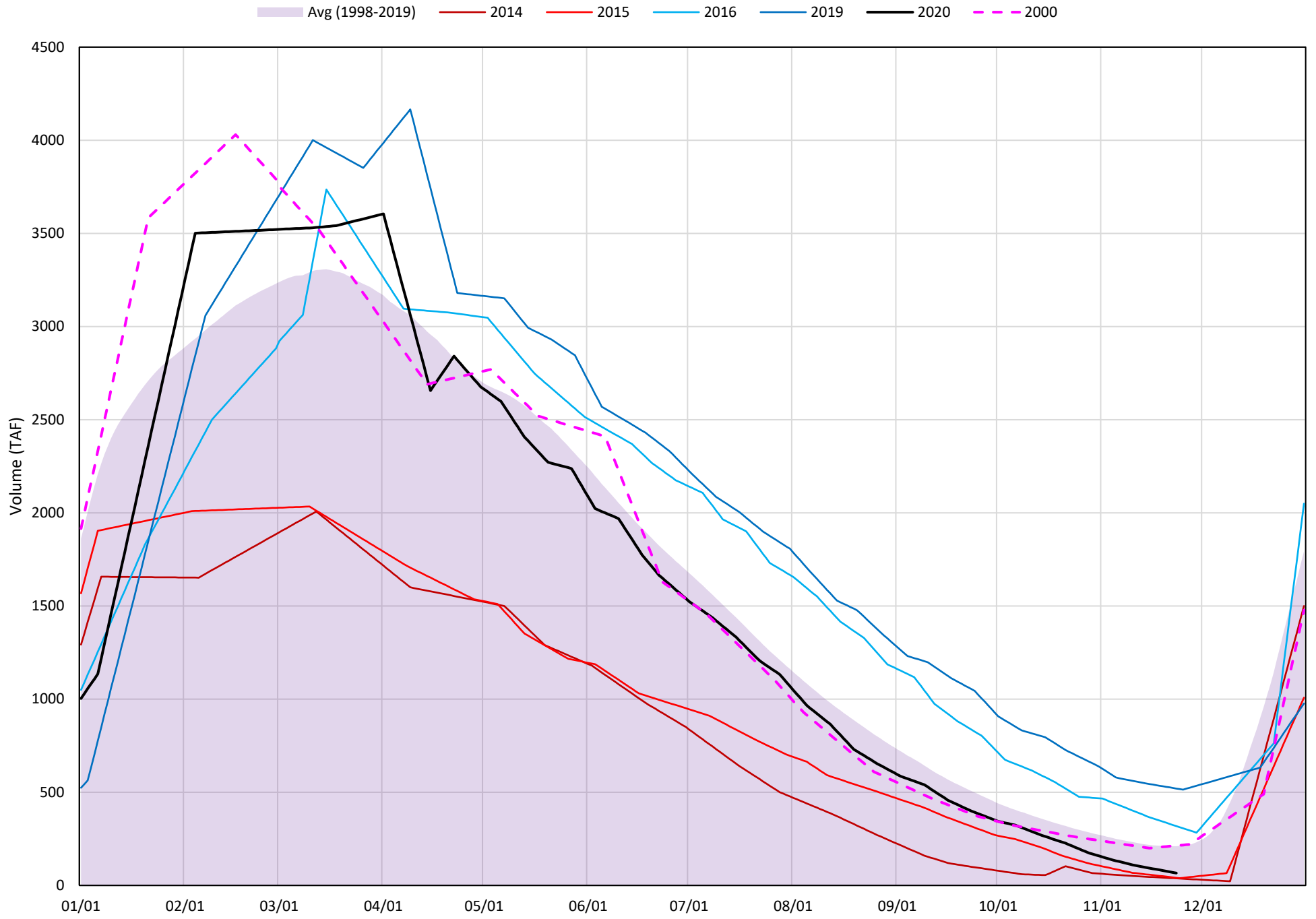
2020

Page	Description
6	- Shasta Lake Isothermobaths Plot
7	- Shasta Lake Cold Water Pool Volume $\leq 52^{\circ}\text{F}$
8	- Shasta Lake Cold Water Pool Volume $\leq 50^{\circ}\text{F}$
9	- Shasta Lake Cold Water Pool Volume $\leq 48^{\circ}\text{F}$
10	- Shasta Lake Cold Water Pool Volume $\leq 52^{\circ}\text{F}$ - Percent Exceedances
11	- Shasta Lake Cold Water Pool Volume $\leq 50^{\circ}\text{F}$ - Percent Exceedances
12	- Shasta Lake Cold Water Pool Volume $\leq 48^{\circ}\text{F}$ - Percent Exceedances
13	- Shasta Lake Cold Water Pool Comparison by Year

Shasta Lake Isothermobaths Plot - 2020

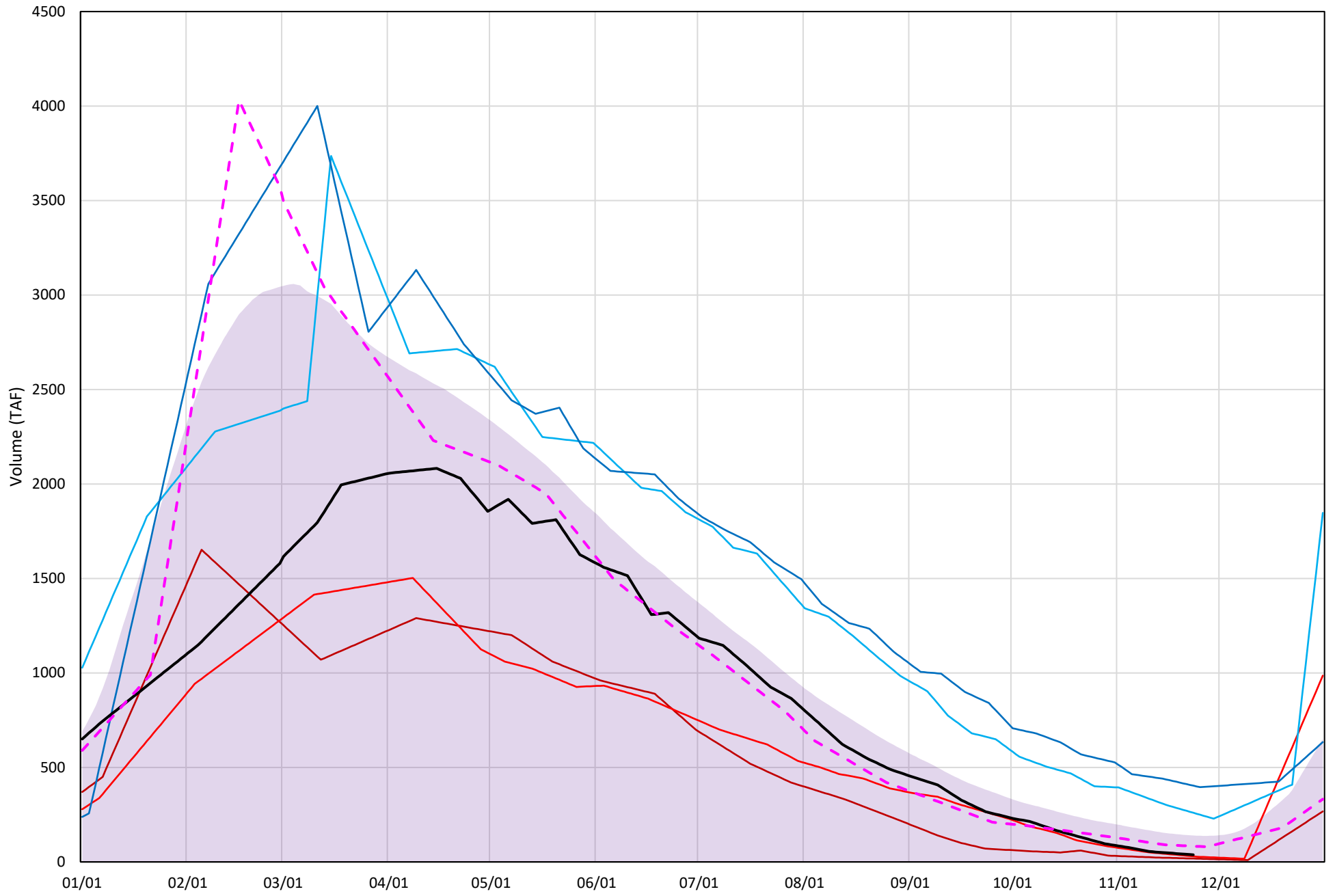


Shasta Lake Cold Water Pool Volume $\leq 52^{\circ}\text{F}$



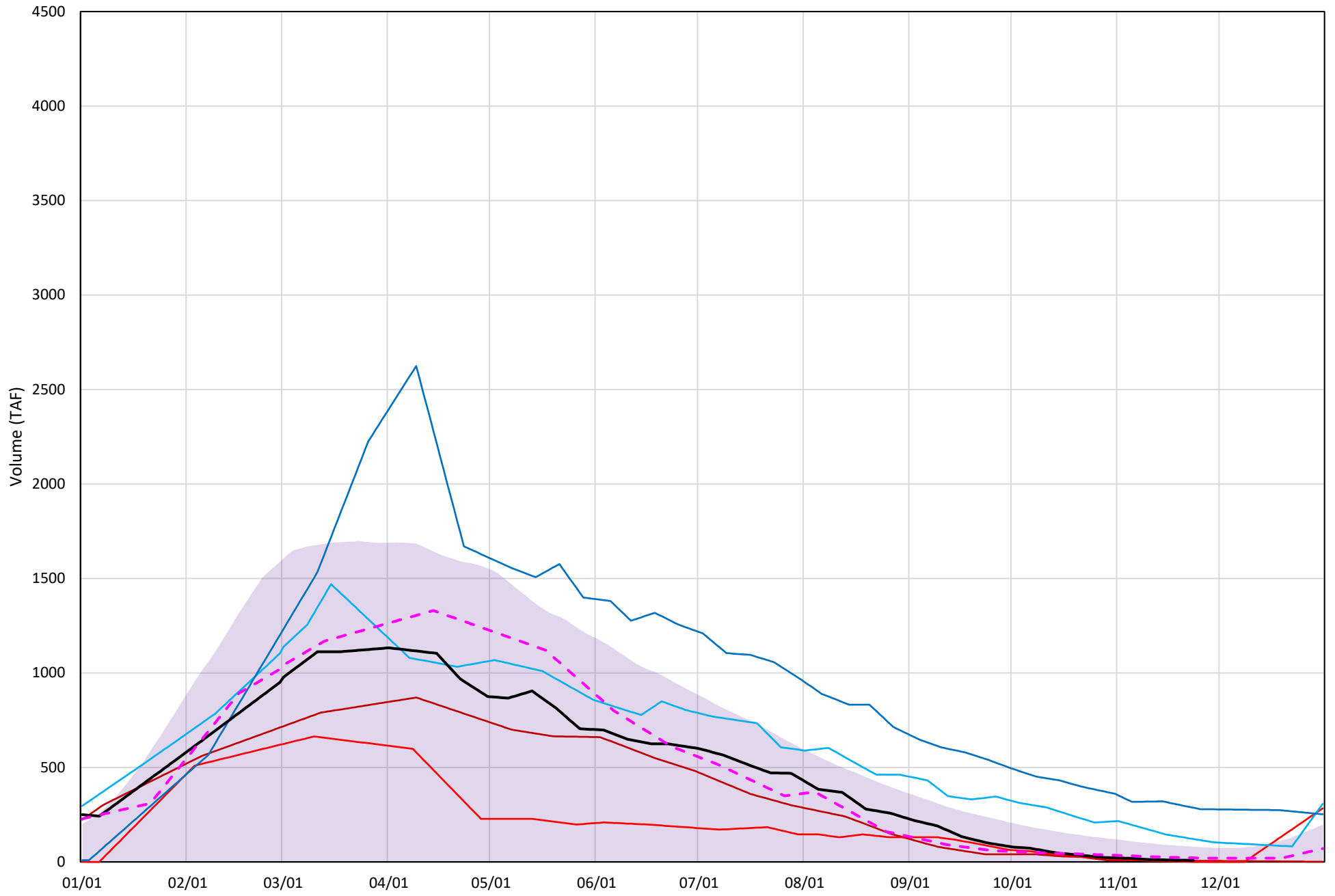
Shasta Lake Cold Water Pool Volume ≤50°F

Avg (1998-2019) 2014 2015 2016 2019 2020 2000



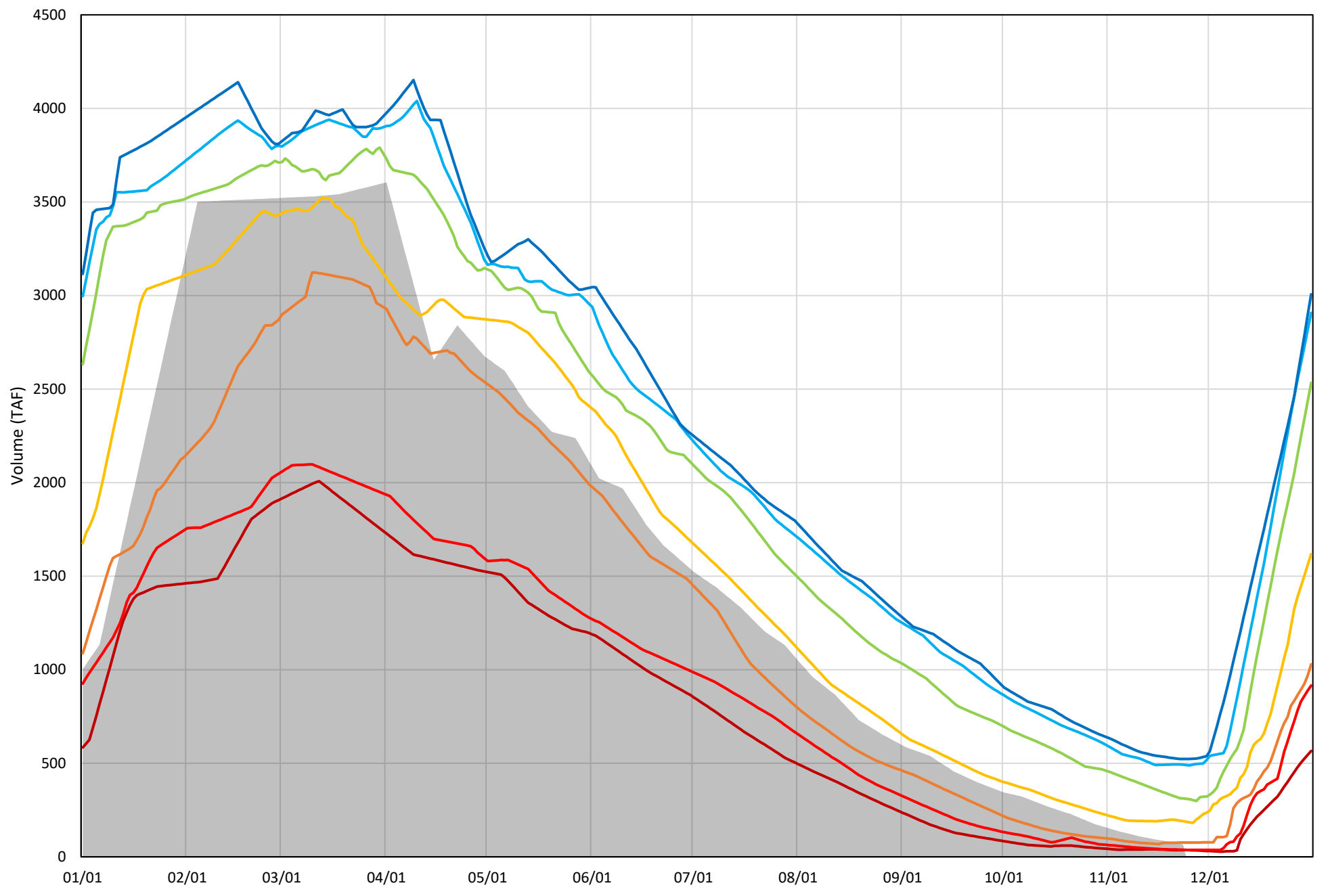
Shasta Lake Cold Water Pool Volume $\leq 48^{\circ}\text{F}$

Avg (1998-2019) 2014 2015 2016 2019 2020 2000

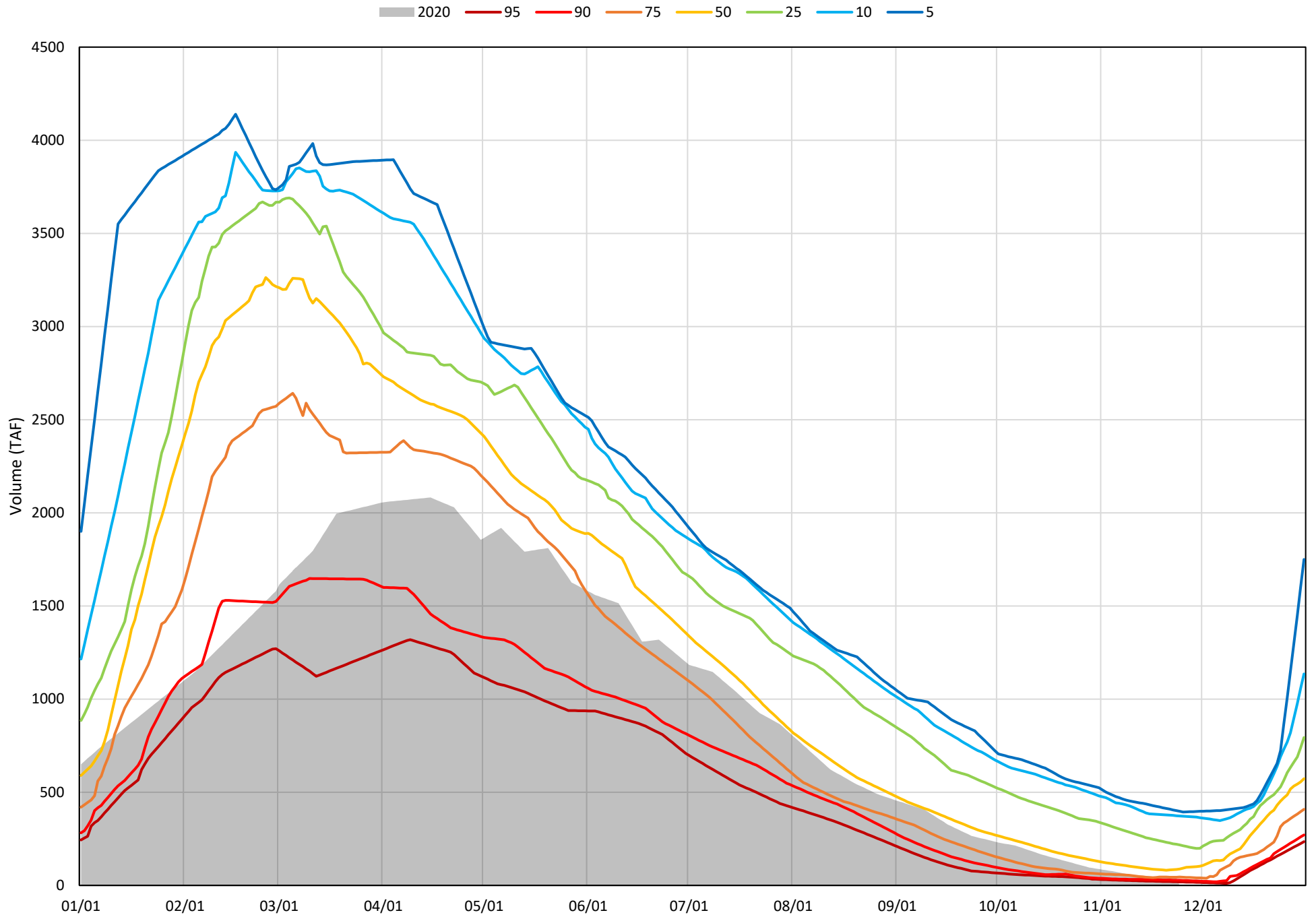


Shasta Lake Cold Water Pool Volume $\leq 52^{\circ}\text{F}$ - Percent Exceedances (1998-2019)

2020 95 90 75 50 25 10 5

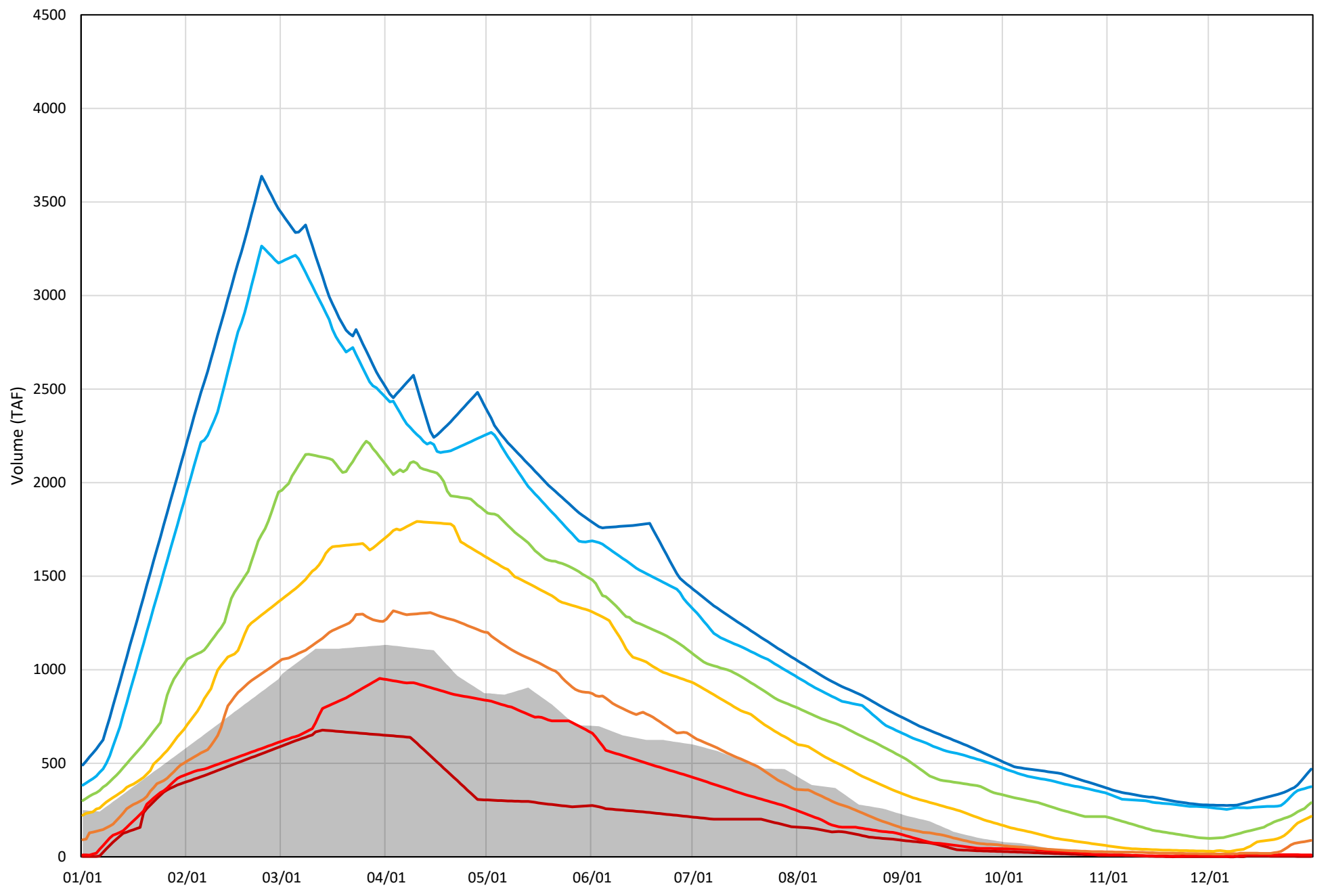


Shasta Lake Cold Water Pool Volume $\leq 50^{\circ}\text{F}$ - Percent Exceedances (1998-2019)



Shasta Lake Cold Water Pool Volume $\leq 48^{\circ}\text{F}$ - Percent Exceedances (1998-2019)

2020 95 90 75 50 25 10 5



Shasta Lake Cold Water Pool Comparison by Year (for Specified Date)

Nov-24 2020	Δ TAF				% Δ			
	≤52°	≤50°	≤48°	Abs. Avg.	≤52°	≤50°	≤48°	Abs. Avg.
1998	115	7	-4	42	174	18	-46	79
1999	244	221	181	215	368	588	2255	1070
2000	147	46	14	69	222	122	171	171
2001	53	41	29	41	79	108	363	184
2002	133	102	67	101	201	272	837	437
2003	203	62	12	92	306	166	150	207
2004	68	23	10	34	102	62	125	96
2005	14	5	15	11	21	14	190	75
2006	177	139	92	136	267	370	1149	595
2007	-30	-10	15	18	-46	-26	187	86
2008	-29	-10	10	16	-43	-26	122	64
2009	-2	8	22	11	-3	22	275	100
2010	293	158	73	175	442	419	916	592
2011	458	353	283	365	690	940	3533	1721
2012	198	170	106	158	299	453	1327	693
2013	74	50	39	54	111	132	492	245
2014	-28	-20	-2	17	-43	-52	-24	40
2015	-25	-8	-8	14	-38	-22	-94	51
2016	252	223	113	196	381	592	1415	796
2017	362	298	237	299	547	792	2955	1431
2018	54	33	10	32	82	87	122	97
2019	454	366	279	366	685	973	3480	1713
2020	0	0	0	0	0	0	0	0

Historic - Current

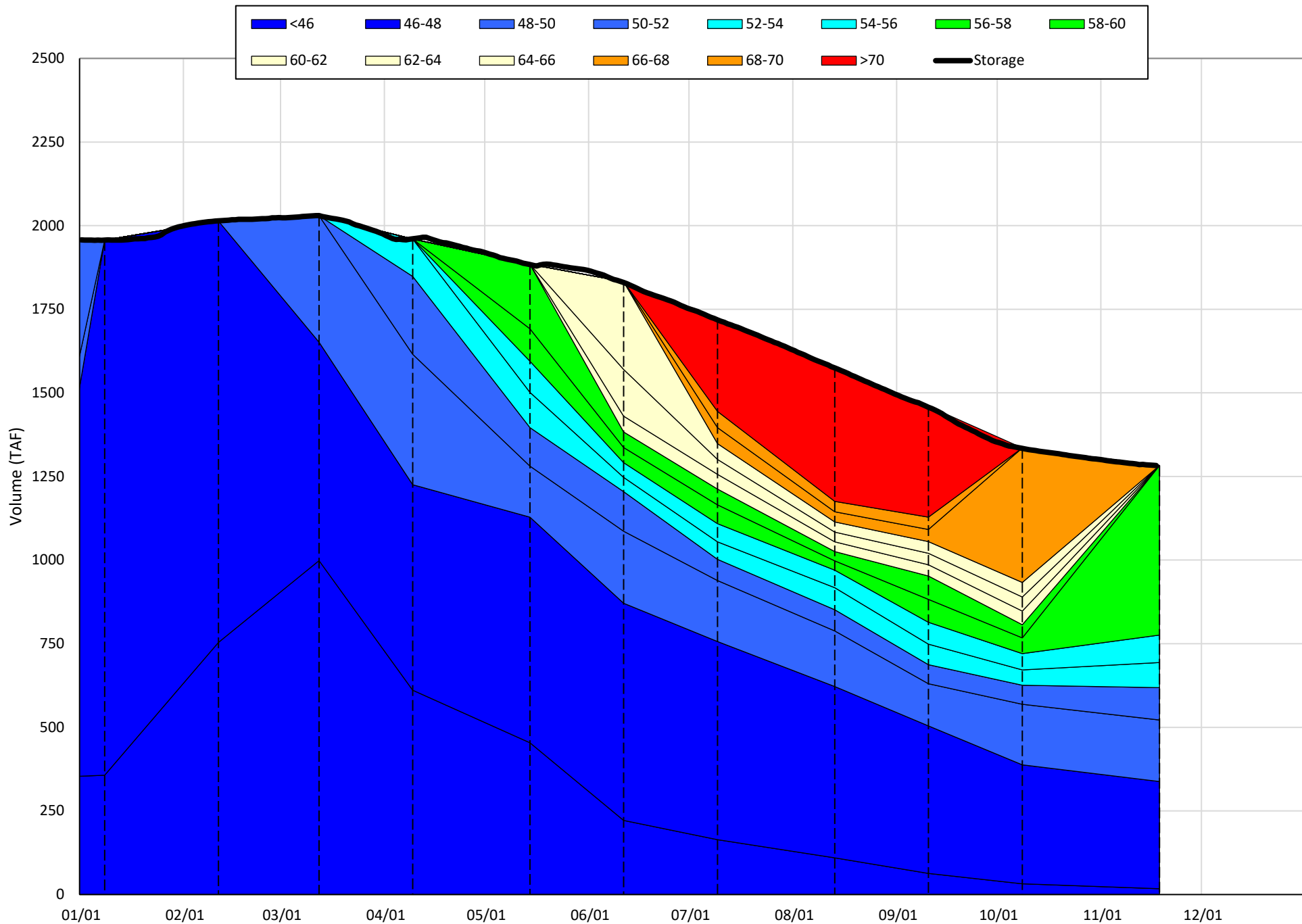
(Historic - Current) / Current

Trinity Lake Isothermobaths & Cold Water Pool Statistics

2020

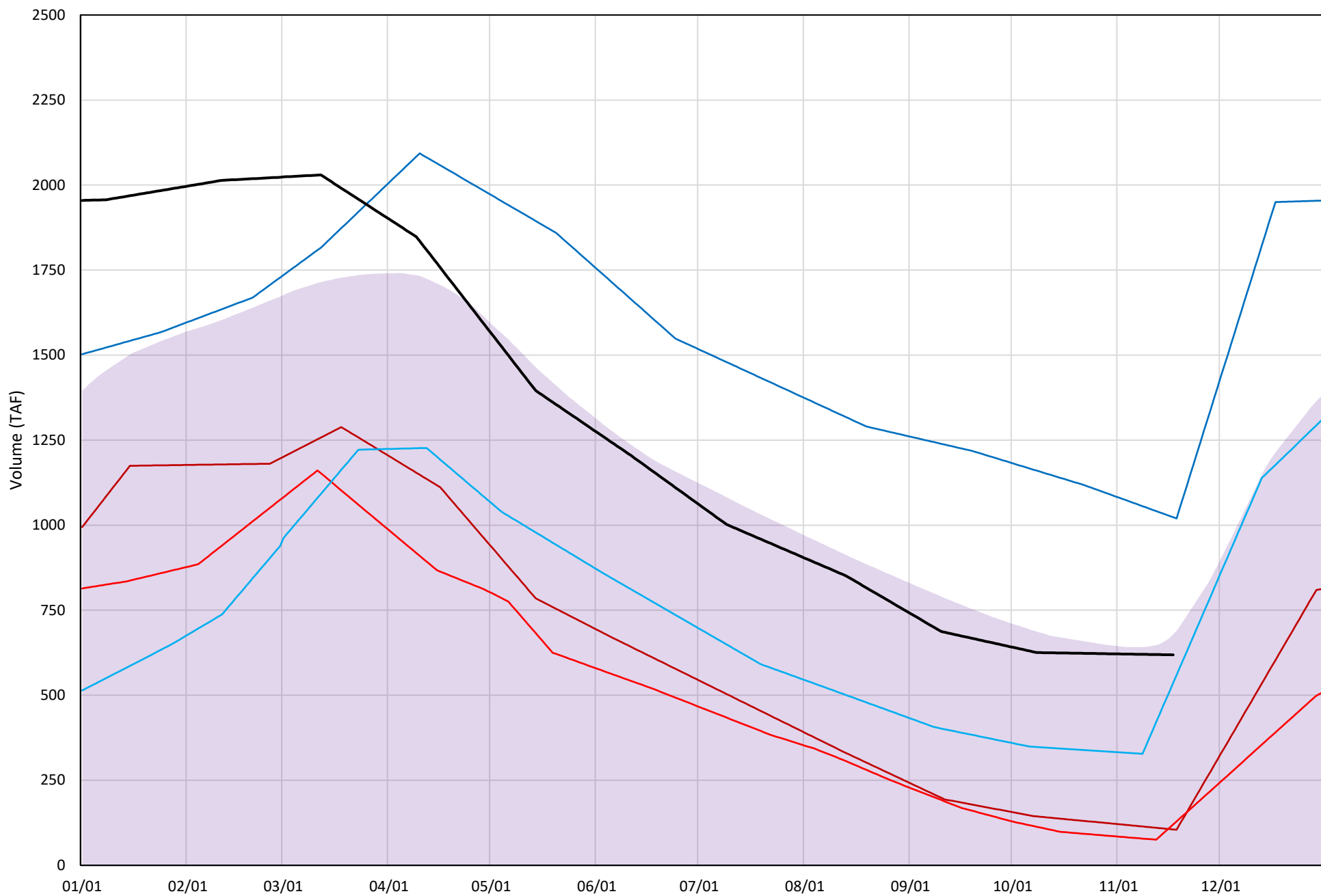
Page	Description
15	- Trinity Lake Isothermobaths Plot
16	- Trinity Lake Cold Water Pool Volume $\leq 52^{\circ}\text{F}$
17	- Trinity Lake Cold Water Pool Volume $\leq 50^{\circ}\text{F}$
18	- Trinity Lake Cold Water Pool Volume $\leq 48^{\circ}\text{F}$
19	- Trinity Lake Cold Water Pool Volume $\leq 52^{\circ}\text{F}$ - Percent Exceedances
20	- Trinity Lake Cold Water Pool Volume $\leq 50^{\circ}\text{F}$ - Percent Exceedances
21	- Trinity Lake Cold Water Pool Volume $\leq 48^{\circ}\text{F}$ - Percent Exceedances
22	- Trinity Lake Cold Water Pool Comparison by Year

Trinity Lake Isothermobaths Plot - 2020



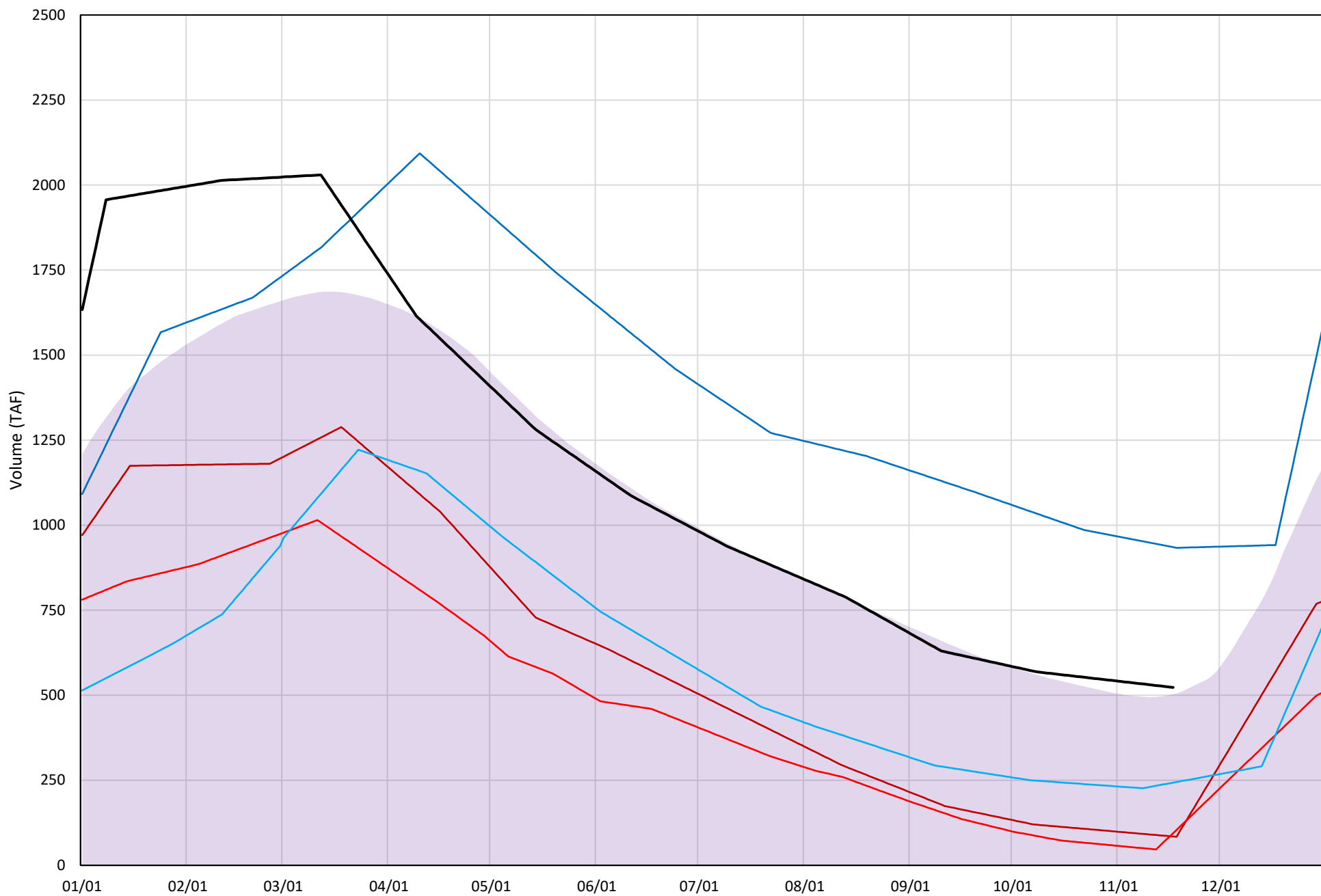
Trinity Lake Cold Water Pool Volume ≤52°F

Avg (2000-2019) 2014 2015 2016 2019 2020



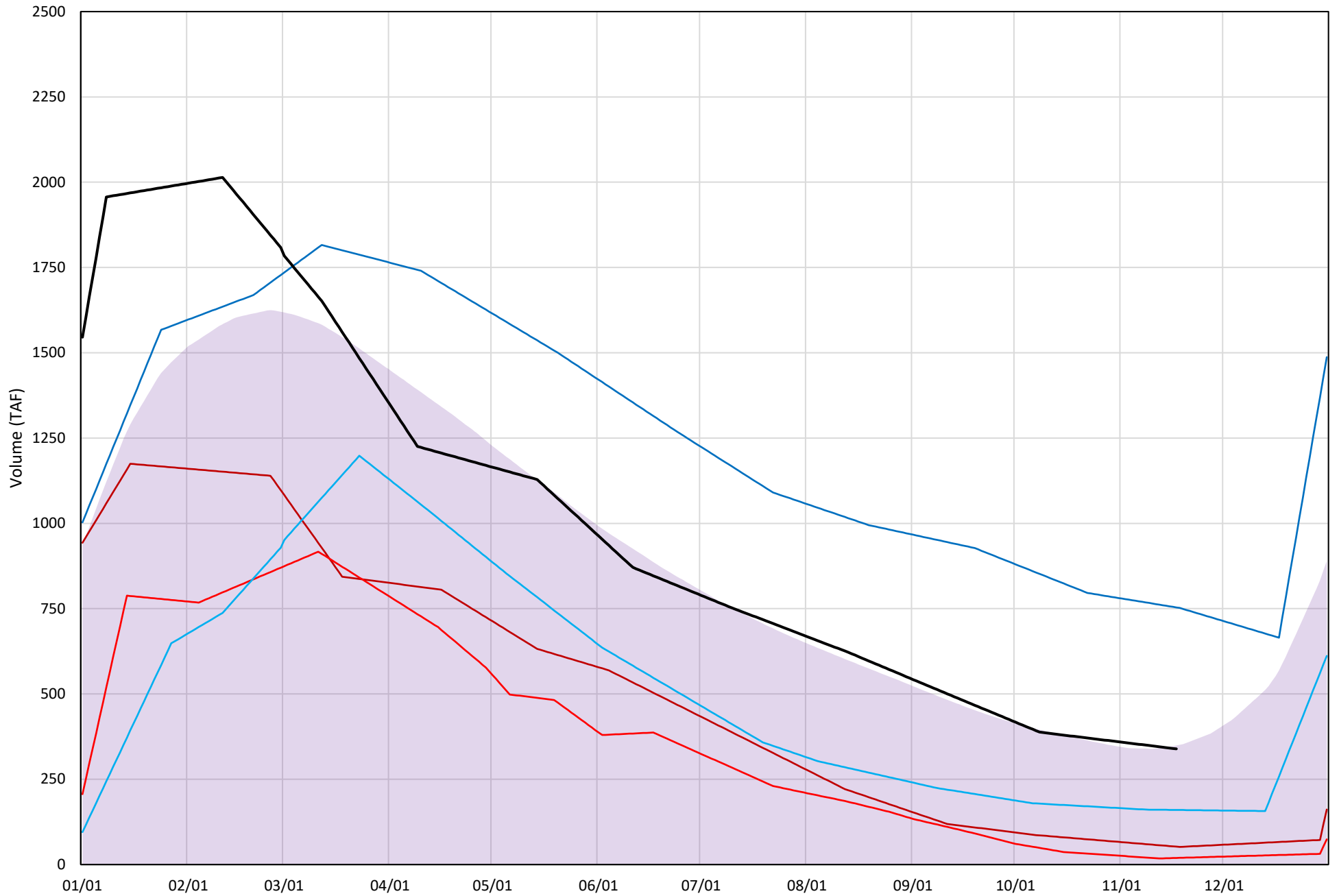
Trinity Lake Cold Water Pool Volume ≤50°F

Avg (2000-2019) 2014 2015 2016 2019 2020

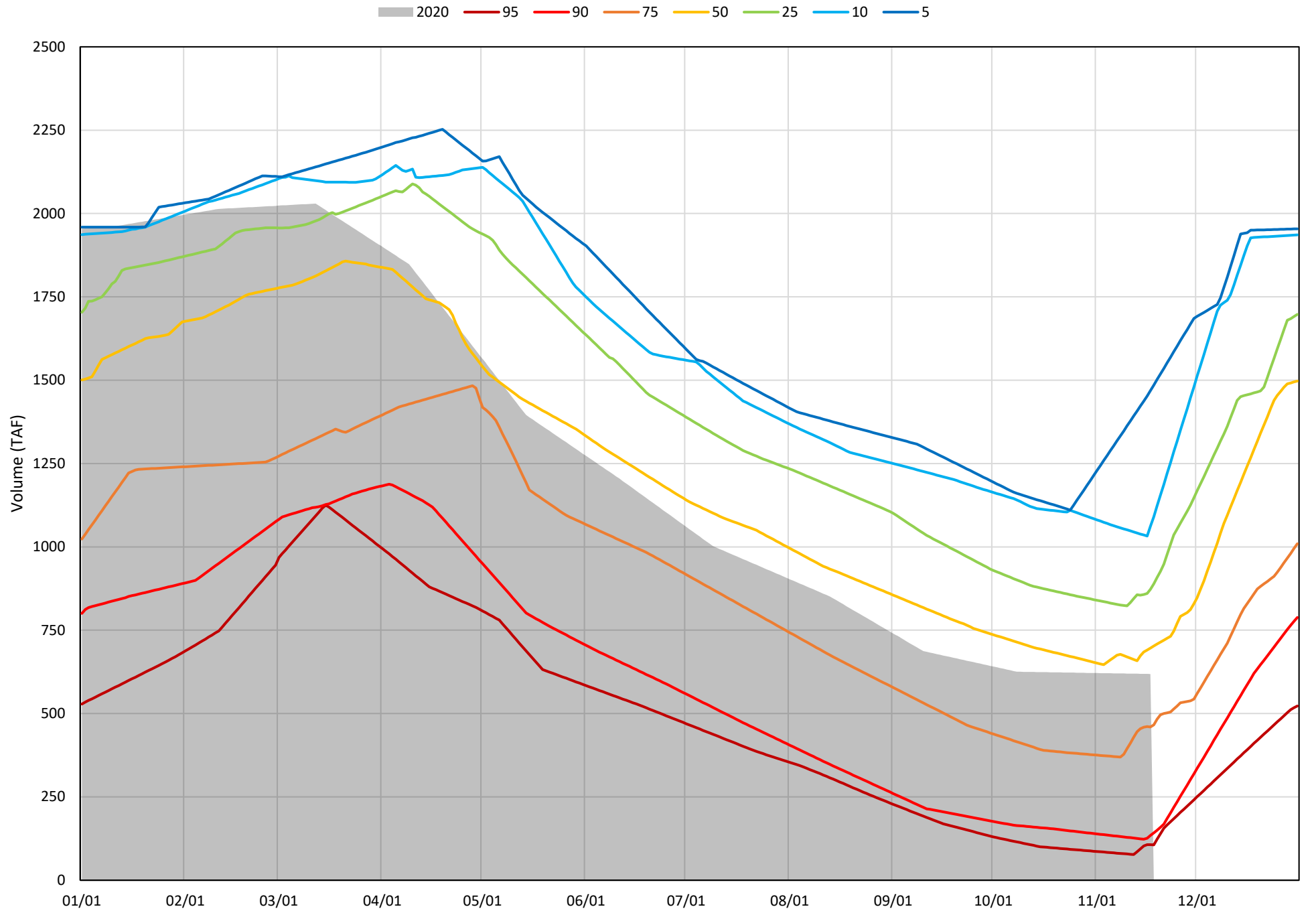


Trinity Lake Cold Water Pool Volume $\leq 48^{\circ}\text{F}$

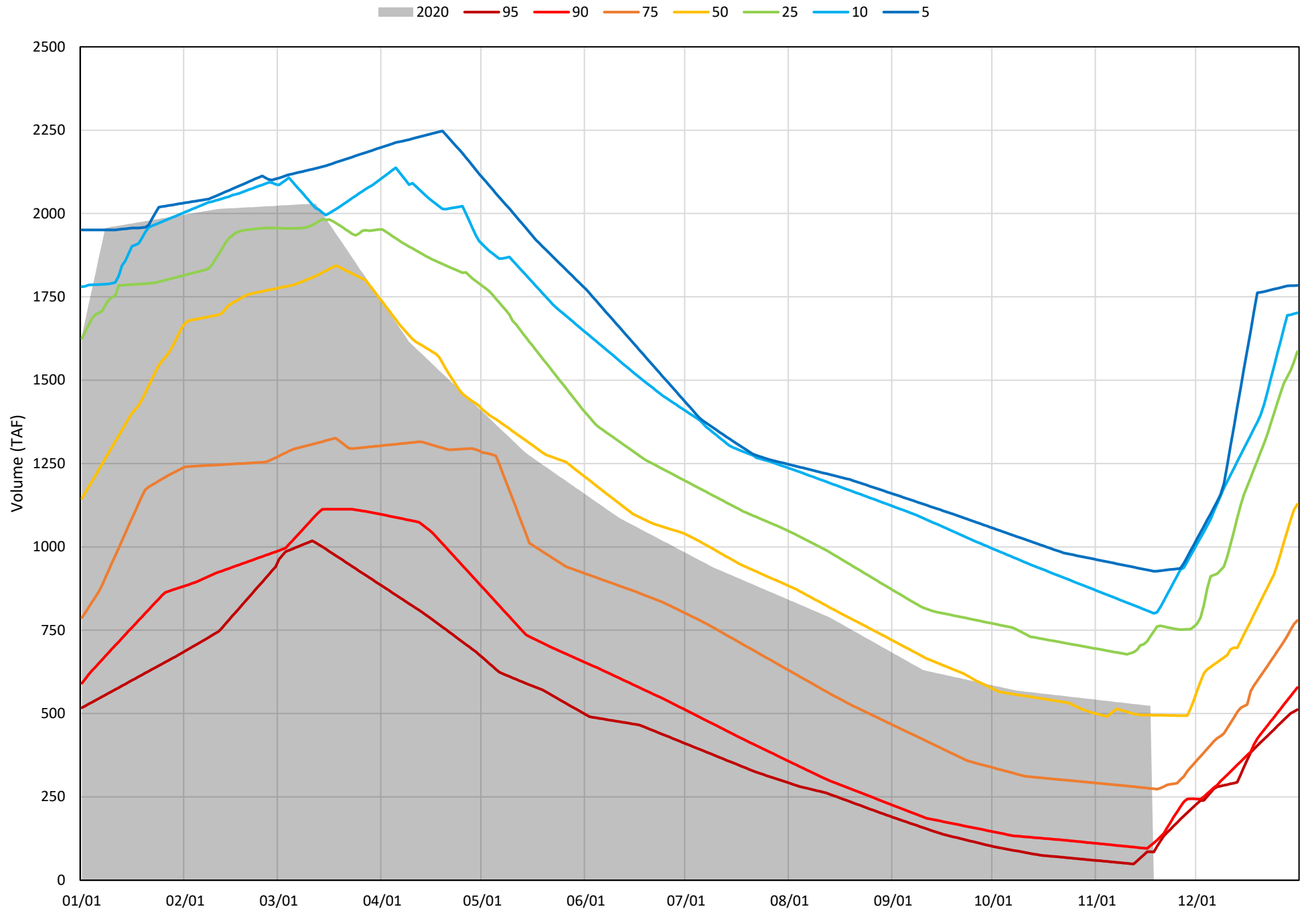
Avg (2000-2019) 2014 2015 2016 2019 2020



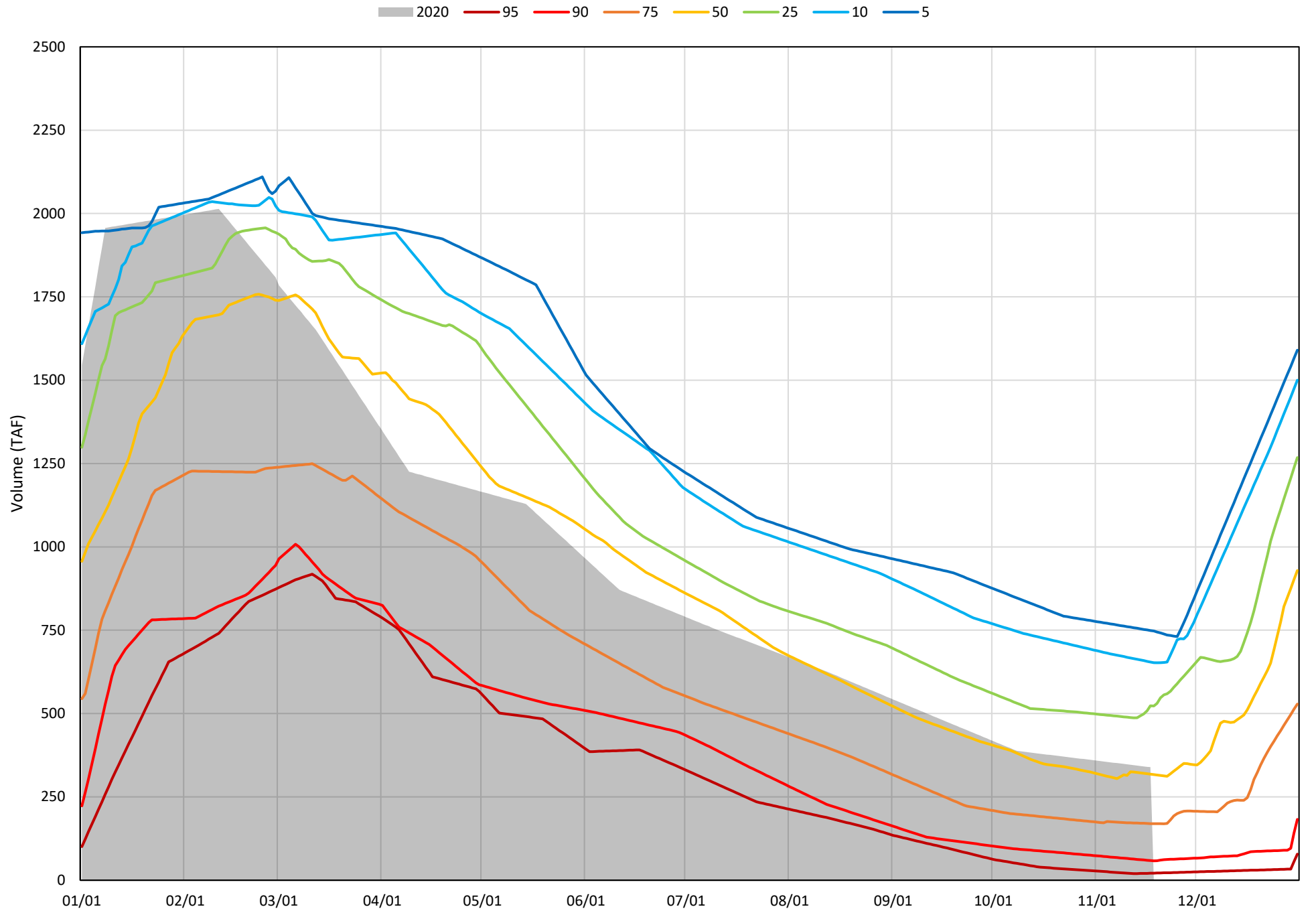
Trinity Lake Cold Water Pool Volume ≤52°F - Percent Exceedances (2000-2019)



Trinity Lake Cold Water Pool Volume $\leq 50^{\circ}\text{F}$ - Percent Exceedances (2000-2019)



Trinity Lake Cold Water Pool Volume $\leq 48^{\circ}\text{F}$ - Percent Exceedances (2000-2019)



Trinity Cold Water Pool Comparison by Year (for Specified Date)

Nov-18 2020	Δ TAF				% Δ			
	≤52°	≤50°	≤48°	Abs. Avg.	≤52°	≤50°	≤48°	Abs. Avg.
2000	113	-5	-50	56	18	-1	-15	11
2001	-116	-112	-68	99	-19	-21	-20	20
2002	-70	-58	8	46	-11	-11	2	8
2003	201	-50	-93	115	32	-10	-28	23
2004	-116	-150	-139	135	-19	-29	-41	30
2005	314	244	148	235	51	47	44	47
2006	871	155	163	396	141	30	48	73
2007	43	65	138	82	7	13	41	20
2008	-362	-343	-221	309	-58	-66	-65	63
2009	-188	-272	-200	220	-30	-52	-59	47
2010	259	215	195	223	42	41	58	47
2011	447	283	191	307	72	54	56	61
2012	237	266	325	276	38	51	96	62
2013	-174	-175	-104	151	-28	-33	-31	31
2014	-513	-438	-287	413	-83	-84	-85	84
2015	-498	-428	-320	415	-81	-82	-94	86
2016	-83	-280	-179	181	-13	-54	-53	40
2017	199	83	48	110	32	16	14	21
2018	230	187	228	215	37	36	67	47
2019	405	412	415	410	65	79	122	89
2020	0	0	0	0	0	0	0	0

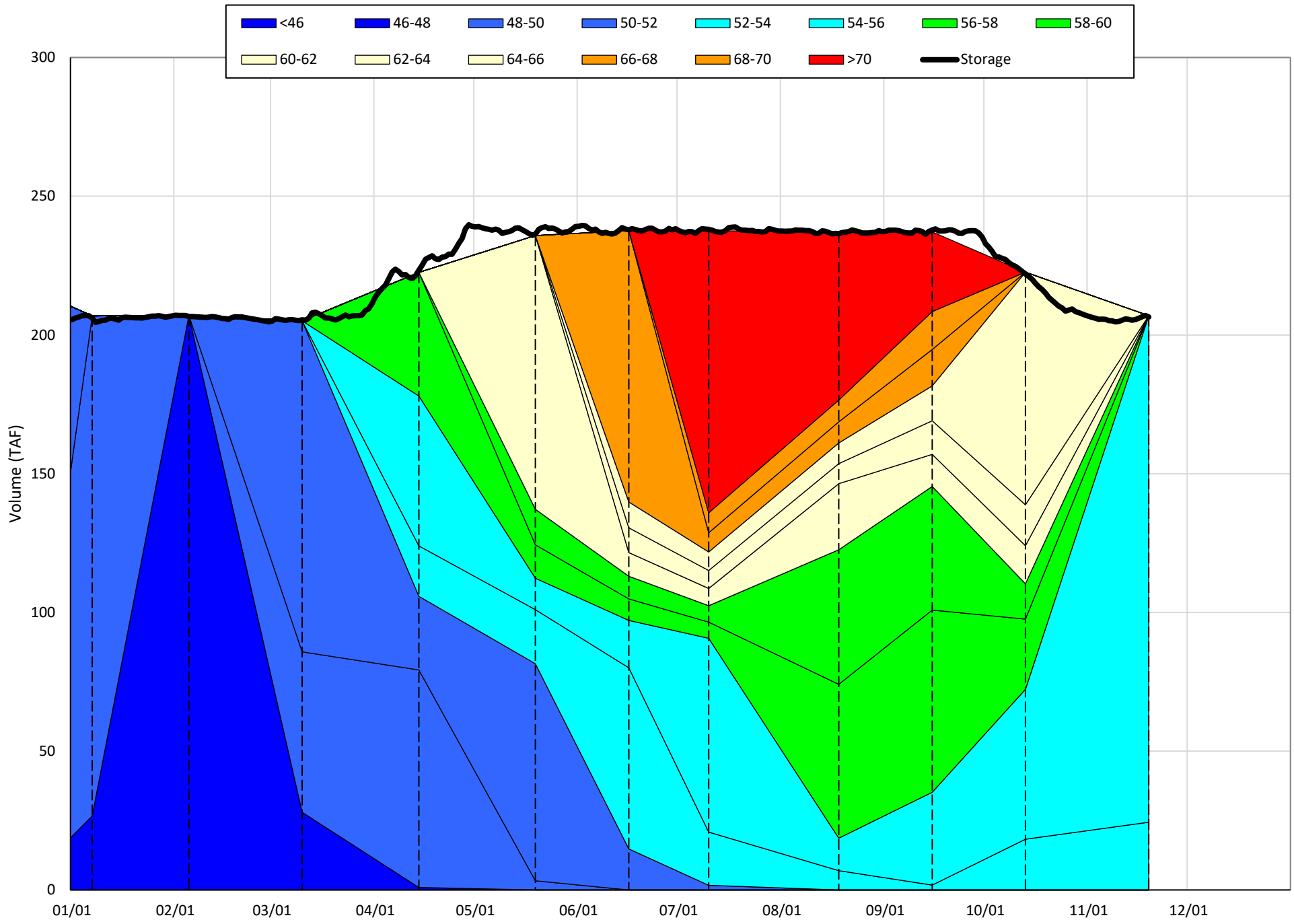
} Historic - Current
} (Historic - Current) / Current

Whiskeytown Lake Isothermobaths & Cold Water Pool Statistics

2020

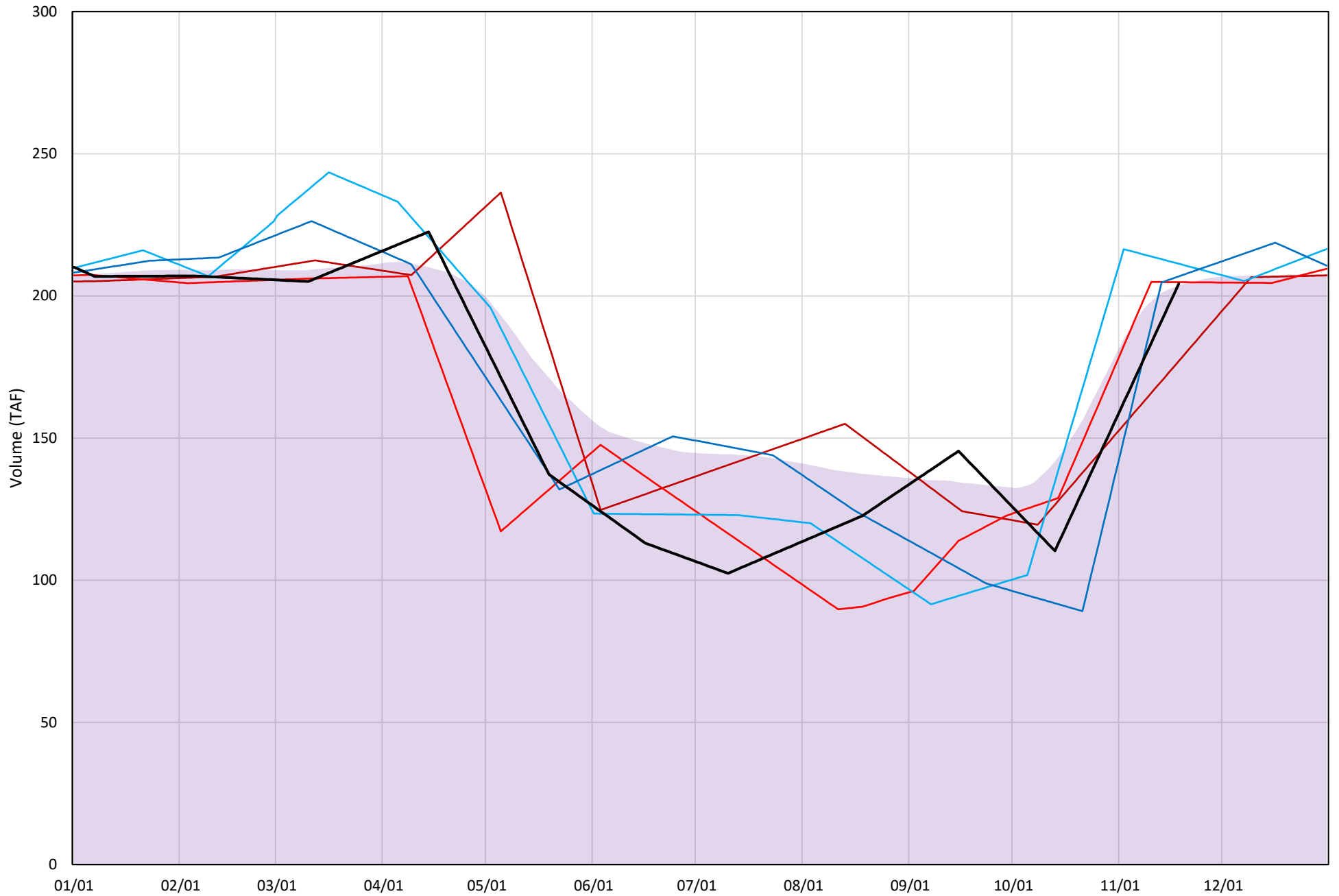
Page	Description
24	- Whiskeytown Lake Isothermobaths Plot
25	- Whiskeytown Lake Cold Water Pool Volume $\leq 60^{\circ}\text{F}$
26	- Whiskeytown Lake Cold Water Pool Volume $\leq 58^{\circ}\text{F}$
27	- Whiskeytown Lake Cold Water Pool Volume $\leq 56^{\circ}\text{F}$
28	- Whiskeytown Lake Cold Water Pool Volume $\leq 60^{\circ}\text{F}$ - Percent Exceedances
29	- Whiskeytown Lake Cold Water Pool Volume $\leq 58^{\circ}\text{F}$ - Percent Exceedances
30	- Whiskeytown Lake Cold Water Pool Volume $\leq 56^{\circ}\text{F}$ - Percent Exceedances
31	- Whiskeytown Lake Cold Water Pool Comparison by Year

Whiskeytown Lake Isothermobaths Plot - 2020



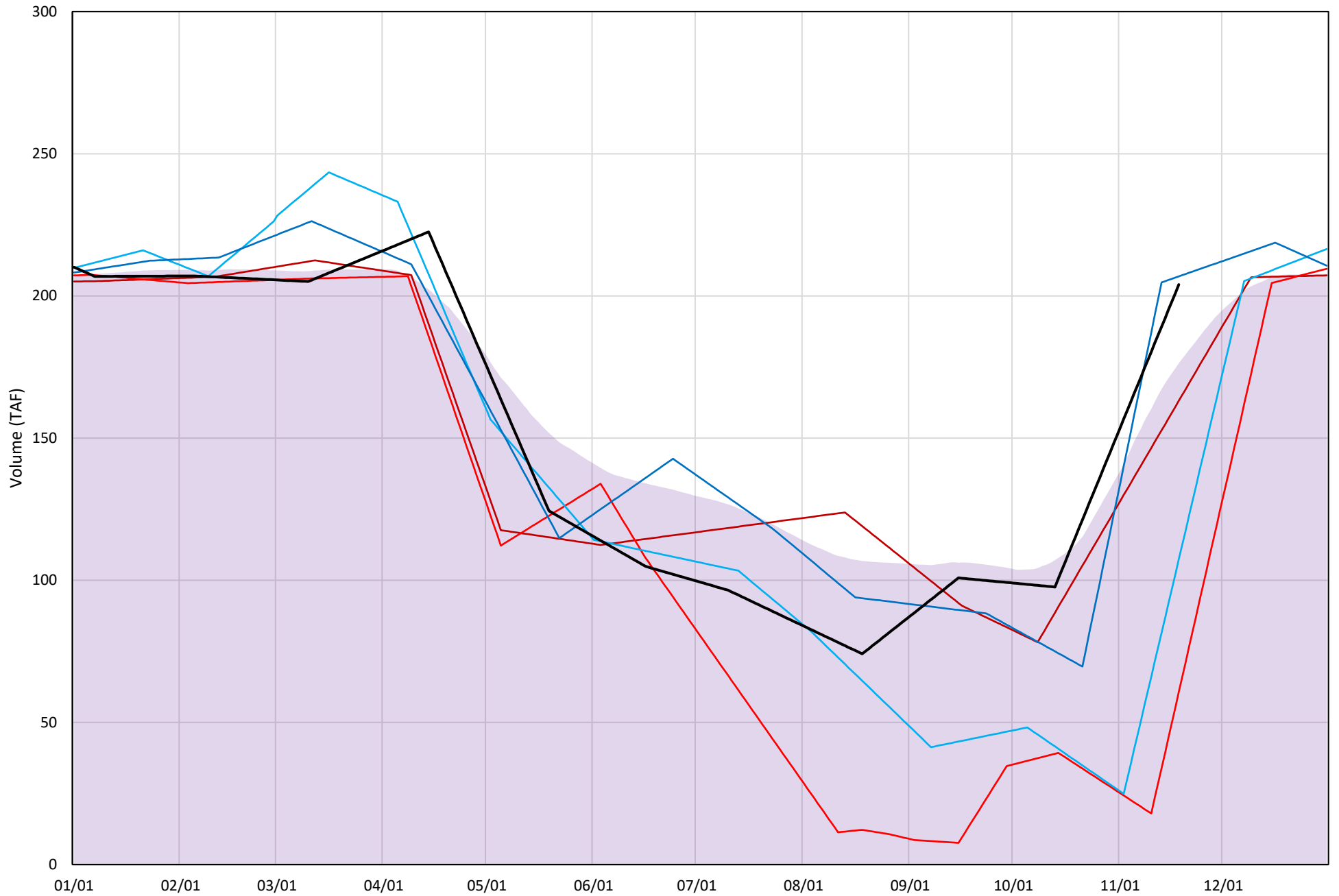
Whiskeytown Lake Cold Water Pool Volume $\leq 60^{\circ}\text{F}$

Avg (2000-2019) 2014 2015 2016 2019 2020



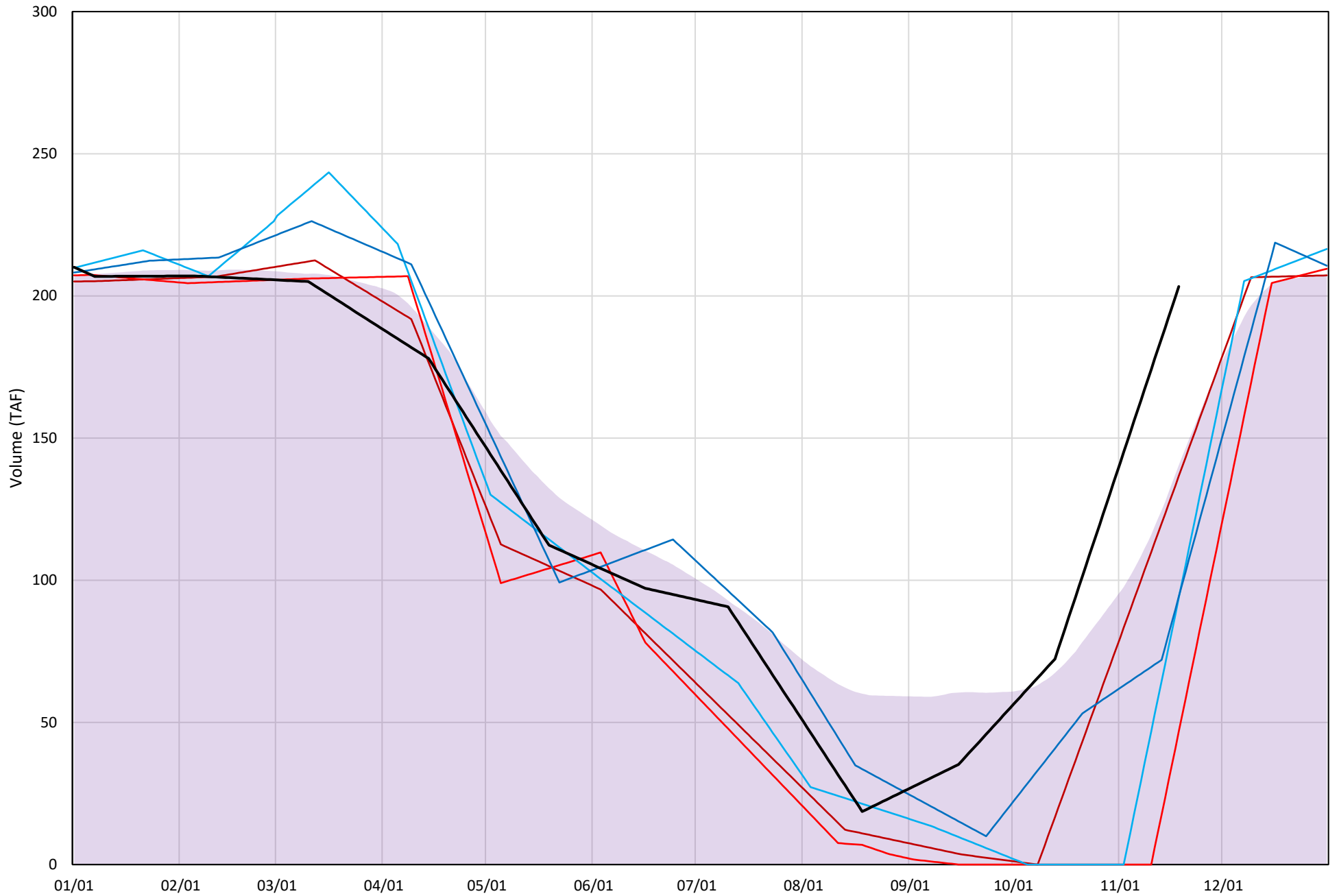
Whiskeytown Lake Cold Water Pool Volume $\leq 58^{\circ}\text{F}$

Avg (2000-2019) 2014 2015 2016 2019 2020

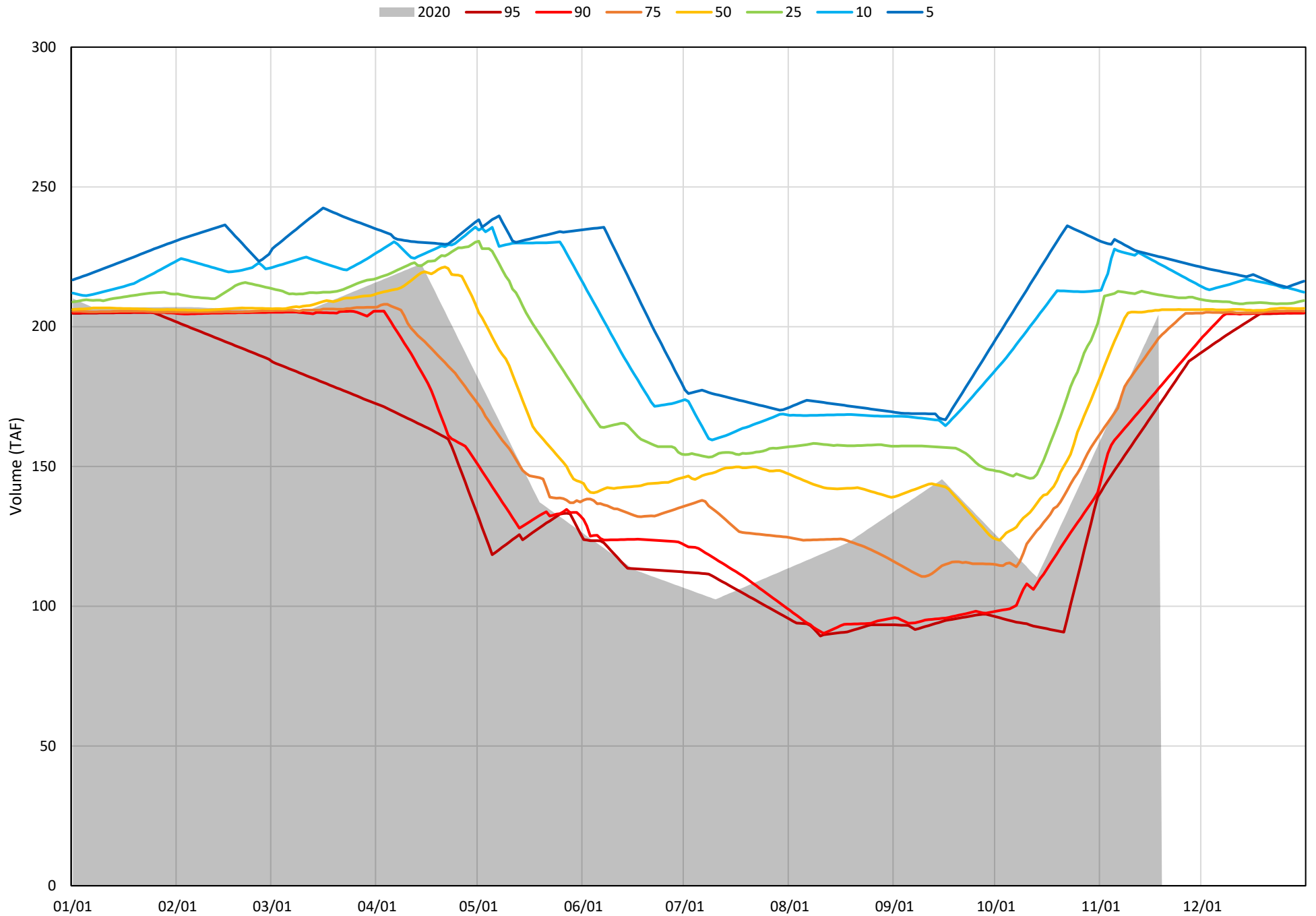


Whiskeytown Lake Cold Water Pool Volume $\leq 56^{\circ}\text{F}$

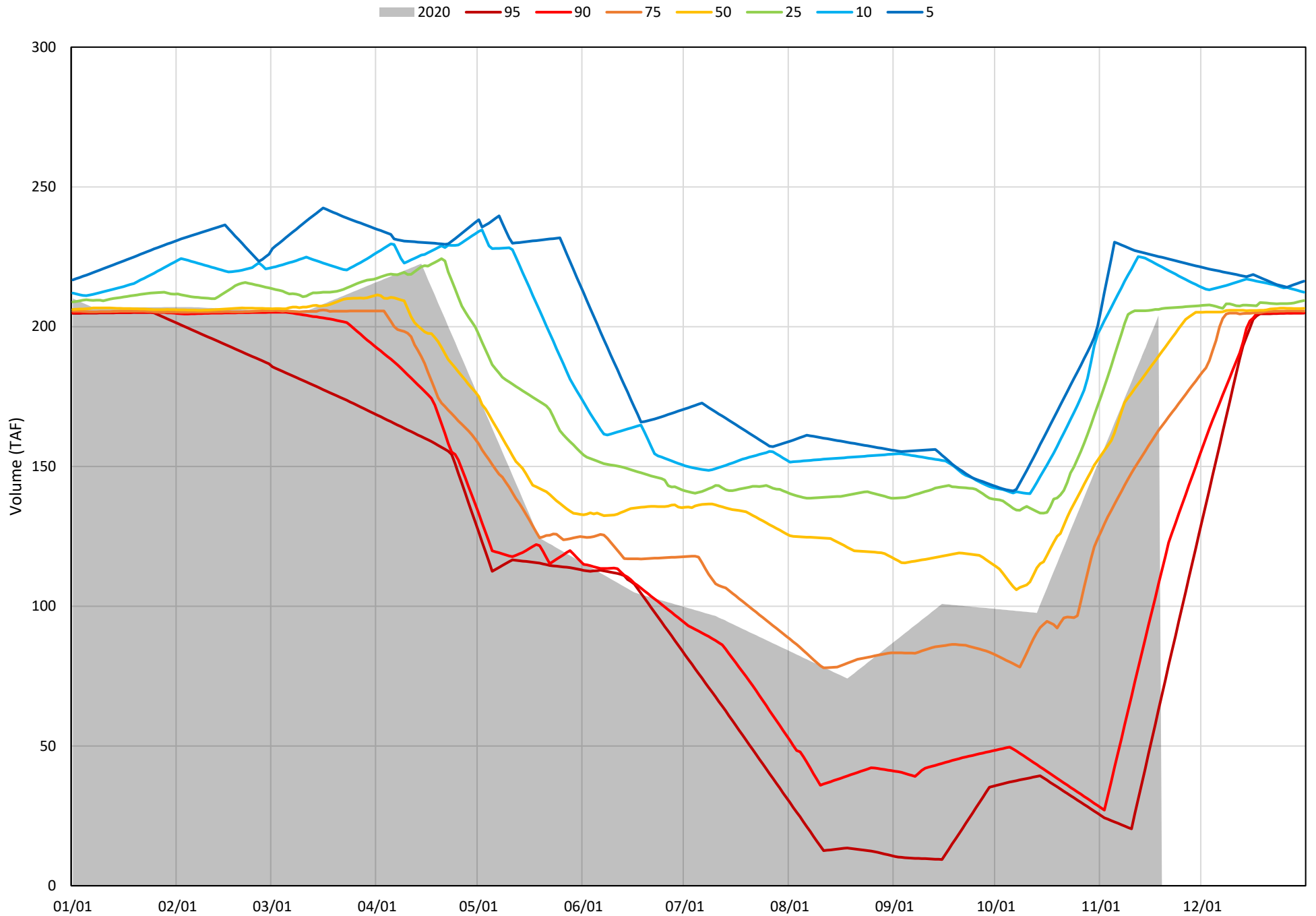
Avg (2000-2019) 2014 2015 2016 2019 2020



Whiskeytown Lake Cold Water Pool Volume $\leq 60^{\circ}\text{F}$ - Percent Exceedances (2000-2019)

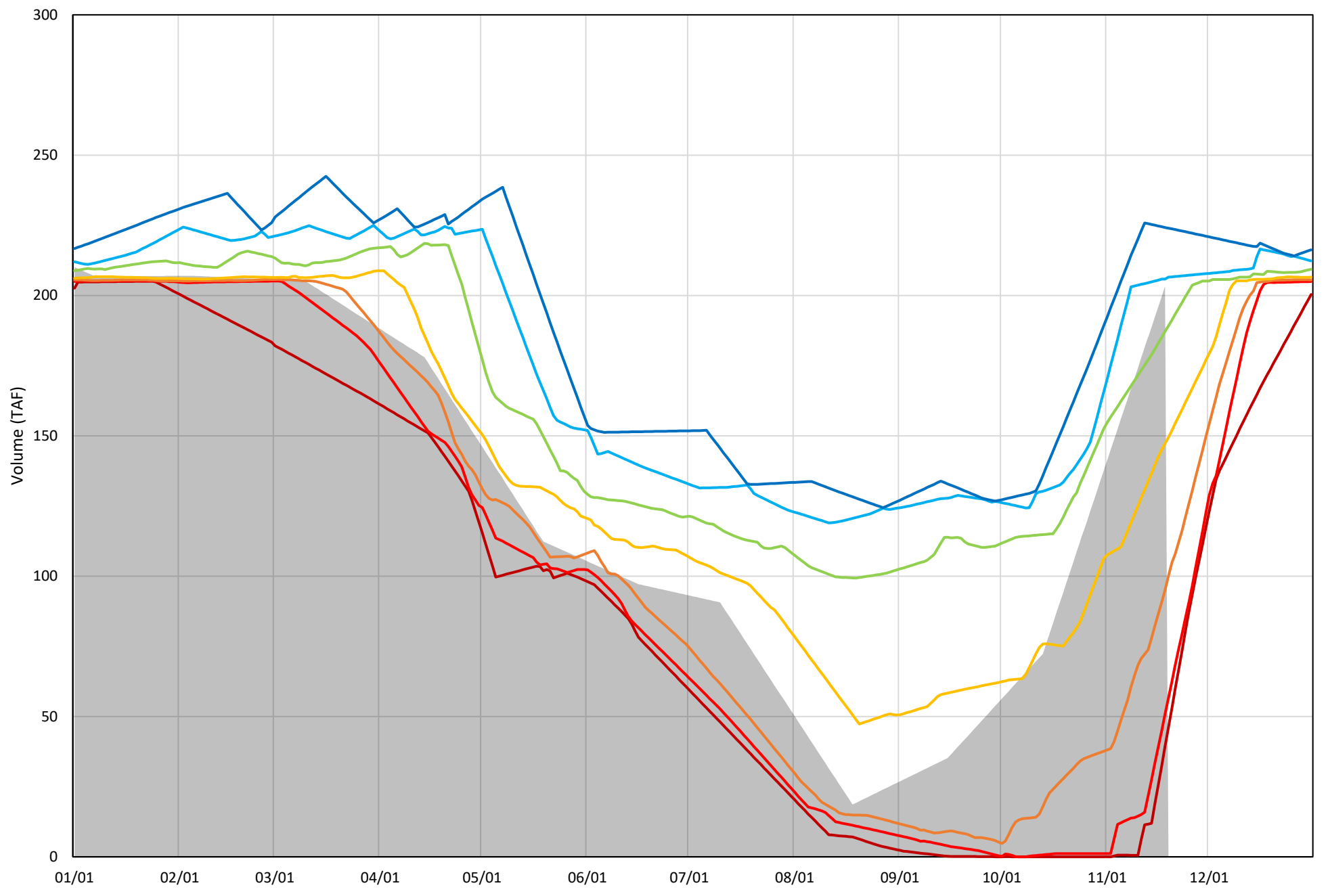


Whiskeytown Lake Cold Water Pool Volume $\leq 58^{\circ}\text{F}$ - Percent Exceedances (2000-2019)



Whiskeytown Lake Cold Water Pool Volume $\leq 56^{\circ}\text{F}$ - Percent Exceedances (2000-2019)

2020 95 90 75 50 25 10 5



Whiskeytown Cold Water Pool Comparison by Year (for Specified Date)

Nov-19 2020	Δ TAF				% Δ			
	≤60°	≤58°	≤56°	Abs. Avg.	≤60°	≤58°	≤56°	Abs. Avg.
2000	-33	-35	-38	35	-16	-17	-19	17
2001	0	0	1	0	0	0	0	0
2002	-11	-12	-16	13	-6	-6	-8	6
2003	18	19	-66	34	9	9	-33	17
2004	21	21	22	21	10	10	11	10
2005	2	2	-116	40	1	1	-57	20
2006	-16	-17	-17	17	-8	-8	-9	8
2007	1	1	-103	35	1	1	-51	17
2008	2	2	3	2	1	1	1	1
2009	-20	-24	-44	29	-10	-12	-21	14
2010	7	-85	-93	62	3	-42	-46	30
2011	1	2	3	2	1	1	1	1
2012	1	-91	-106	66	1	-44	-52	32
2013	17	-41	-46	35	8	-20	-23	17
2014	-27	-41	-67	45	-13	-20	-33	22
2015	1	-143	-157	100	0	-70	-77	49
2016	7	-97	-109	71	3	-47	-54	35
2017	4	-30	-33	22	2	-15	-16	11
2018	11	11	-164	62	5	5	-81	31
2019	3	3	-109	38	1	1	-54	19
2020	0	0	0	0	0	0	0	0

Historic - Current

(Historic - Current) / Current