

Northern CVP Water Temperature Report

November - 2019

Page	Description
1	- Mean Daily Water Temperature, Release Flow Rates and Air Temperatures with Monthly Averages
2	- Redding 10-Day Forecasted Air Temperatures
3	- Sacramento River Mean Daily Water Temperature, Air Temperature and 10-Day Forecasted Air Temperature Plot - Water Temperature Measuring Station Details - Temperature Control Point Details
4	- Shasta Lake Isothermobaths Plot
5	- Trinity Lake Isothermobaths Plot
6	- Whiskeytown Lake Isothermobaths Plot
x	- TCD Configuration (External Link)



All Data in this Report is Preliminary and Subject to Change

DATE	Mean Daily Water Temperatures (°F)														Mean Daily Release (CFS)			Mean Daily Air Temperatures (°F)						
	TCD ¹	SHD	SPP ¹	KWK	SAC	CCR	APR ⁴	BSF ²	JLF	BND	RDB	IGO	LWS	NFH ³	Shasta Generation	Spring Creek P.P.	Keswick Total	RDD	BSF	RDB	LWS			
Oct	50.5	49.7	54.5	51.3	51.6	52.0	52.2	52.5	53.1	53.6	53.6	54.3	47.7	51.1	6166	1196	7247	62.7	57.8	61.0	-			
11/01	51.3	50.5	54.2	50.8	51.2	51.4	51.4	51.4	51.5	#	-	51.0	52.8	44.6	45.1	5891	541	6022	57.0	51.5	51.9	-		
11/02	51.4	50.8	54.1	51.1	51.3	51.5	51.5	51.5	51.7	#	-	51.6	52.8	44.5	46.0	5398	279	5741	59.0	51.8	54.4	-		
11/03	51.7	50.8	54.0	51.1	51.5	51.8	51.8	51.8	52.1	#	-	51.8	53.0	44.5	46.7	4936	152	5559	59.0	52.4	54.2	-		
11/04	#	-	50.6	54.1	51.3	51.7	52.0	52.0	52.1	!	-	52.2	53.1	44.7	47.1	4249	666	5343	64.0	55.9	57.8	-		
11/05	51.3	50.7	53.9	51.6	51.9	52.2	52.3	52.4	52.7	52.8	52.6	53.1	45.0	47.3	4380	466	5192	61.5	55.4	57.0	-			
11/06	51.3	50.7	53.9	51.4	51.9	52.3	52.5	52.7	53.2	53.3	53.2	53.0	45.2	47.7	4528	183	5091	62.0	56.6	58.9	-			
11/07	51.7	51.1	53.6	51.3	51.6	51.9	52.0	52.2	52.6	52.8	53.0	52.6	45.0	47.1	4373	280	5086	57.5	52.7	56.4	-			
11/08	51.6	51.0	53.4	51.4	51.7	52.0	52.1	52.1	52.4	52.5	52.5	52.4	44.8	46.8	4501	248	5088	61.0	53.8	58.0	-			
11/09	51.7	51.5	53.3	51.5	51.8	52.0	52.1	52.1	52.4	52.5	52.4	52.4	44.7	46.3	3855	345	5089	60.5	54.0	58.1	-			
11/10	51.5	51.1	53.3	51.6	52.0	52.4	52.5	52.6	52.9	53.0	52.7	52.9	44.9	47.0	5136	396	5091	↑	65.0	60.7	60.9	-		
11/11	52.1	51.2	53.6	51.7	52.3	52.8	53.1	53.3	53.8	53.9	53.7	53.1	45.3	47.3	4721	139	5091	↑	70.0	64.0	65.9	-		
11/12	51.9	51.2	53.3	51.7	52.0	52.3	52.6	52.9	53.5	53.7	53.9	52.8	45.7	47.6	4358	434	5081	61.0	55.4	58.2	-			
11/13	51.8	51.1	53.4	51.8	52.1	52.3	52.4	52.6	52.9	53.0	53.1	52.7	45.6	47.3	4214	360	5071	59.5	53.3	57.3	-			
11/14	51.6	51.1	53.2	51.7	52.1	52.4	52.6	52.8	53.2	53.3	53.1	52.7	46.0	47.9	4427	300	5063	59.5	54.9	56.2	-			
11/15	52.1	51.5	53.1	51.8	52.2	52.6	52.9	53.1	53.6	53.7	53.7	53.0	46.5	49.0	4373	424	5110	59.5	56.3	58.1	-			
11/16	52.1	?	51.6	53.7	51.9	52.2	52.6	52.7	52.8	53.2	53.3	53.5	46.3	48.7	4331	451	5116	63.5	57.8	62.3	-			
11/17	52.1	?	51.3	53.6	52.1	52.4	52.8	52.9	53.0	53.2	53.3	53.2	45.9	47.8	4505	138	5111	↑	66.5	60.3	57.8	-		
11/18	52.2	51.3	53.2	52.0	52.4	52.8	53.0	53.2	53.6	53.7	53.4	52.9	45.9	47.4	4354	185	5040	62.5	58.8	58.9	-			
11/19	52.1	51.6	53.6	51.9	52.3	52.6	52.8	53.0	53.4	53.6	53.6	52.6	45.9	48.4	4735	235	5002	58.5	57.4	59.8	-			
11/20	52.5	51.9	53.5	51.7	51.9	52.0	52.0	52.1	52.4	?	52.5	52.5	45.3	48.1	3783	619	5001	62.0	60.8	61.4	-			
11/21	52.6	51.3	53.1	51.6	51.8	52.0	51.9	51.8	51.8	51.6	51.6	51.8	44.3	45.9	4361	295	5000	54.5	52.4	54.0	-			
11/22	52.2	51.4	53.2	51.6	51.7	51.7	51.6	51.5	51.5	51.5	51.5	51.4	43.8	44.2	4375	205	4997	51.5	46.9	50.5	-			
11/23	52.5	51.7	53.1	51.5	51.7	51.8	51.7	51.5	51.5	51.4	51.3	51.6	43.6	43.5	4504	174	5038	54.0	47.9	52.3	-			
11/24	52.8	51.8	53.0	51.3	51.5	51.5	51.3	51.2	51.2	51.1	51.1	51.6	43.8	43.3	4478	130	5097	50.5	45.4	49.1	-			
11/25	52.6	51.7	53.2	51.5	51.5	51.4	51.2	50.9	50.8	50.7	50.5	51.1	43.3	43.6	4171	412	5068	48.5	46.1	49.4	-			
11/26	52.8	51.7	?	53.0	51.2	50.9	50.4	50.0	49.6	49.2	49.2	48.9	?	49.5	?	42.0	40.5	4367	363	5047	37.5	36.4	39.3	-
11/27	52.4	51.4	52.7	50.7	50.7	50.2	49.6	49.1	48.5	48.1	47.5	49.7	42.2	39.2	4226	366	4987	43.0	44.3	44.8	-			
11/28	52.7	52.1	52.8	50.7	50.7	50.6	50.2	49.9	49.5	49.3	48.6	50.2	42.9	41.0	4170	363	5001	43.0	39.6	40.8	-			
11/29	53.0	52.0	52.8	50.9	50.7	50.5	49.9	49.4	49.0	48.8	48.5	49.8	42.3	41.7	4235	360	5008	39.0	35.1	38.3	-			
11/30	52.5	51.8	52.6	51.3	51.1	50.8	50.3	49.9	49.4	49.1	48.4	49.7	41.6	41.0	4445	172	5021	40.0	39.4	39.8	-			
-																								
Nov	52.1	51.3	53.4	51.4	51.7	51.9	51.8	51.8	52.0	52.0	51.8	52.1	44.5	45.7	4479	323	5142	56.4	51.9	54.1	-			

Total CFS	134380	9681	154252
Total AF	266537	19202	305953

Legend

- ? = 1-9 hours of data missing (Average includes estimations)
- ! = 10 or more hours of data missing (Average not calculated)
- # = Station out of service
- ↑ = Record high air temperature
- ↓ = Record low air temperature
- = Monthly Averages

Notes

- 1 Temperatures are weighted averages based on individual penstock flow and temperature
- Highlighted cells in the TCD column indicate a TCD change was made on that day
- 2 Current control point (see page 3 for more details)
- 3 NFH is only reported in October, November and December
- 4 APR = Airport Road. This is a virtual site interpolated linearly between CCR and BSF based on distance.

D A T E	Redding (RDD) Daily Air Temperatures (°F)																																				
	Actual			Forecasted																																	
	Previous Day			Current Day			1 Day			2 Days			3 Days			4 Days			5 Days			6 Days			7 Days			8 Days			9 Days			10 Days			
	↓	↑	Avg	↓	↑	Avg	↓	↑	Avg	↓	↑	Avg	↓	↑	Avg	↓	↑	Avg	↓	↑	Avg	↓	↑	Avg	↓	↑	Avg	↓	↑	Avg	↓	↑	Avg	↓	↑	Avg	
11/01	30	75	52.5	36	79	57.5	42	80	61.0	44	82	63.0	45	80	62.5	45	81	63.0	44	81	62.5	44	78	61.0	47	82	64.5	46	71	58.5	42	70	56.0	43	70	56.5	
11/02	34	80	57.0	36	82	59.0	44	84	64.0	45	83	64.0	46	81	63.5	44	79	61.5	45	78	61.5	44	77	60.5	43	74	58.5	46	68	57.0	47	68	57.5	42	71	56.5	
11/03	36	82	59.0	39	84	61.5	40	84	62.0	40	82	61.0	42	82	62.0	42	77	59.5	44	75	59.5	43	75	59.0	50	78	64.0	50	76	63.0	47	71	59.0	45	71	58.0	
11/04	37	81	59.0	39	84	61.5	42	81	61.5	43	82	62.5	43	81	62.0	44	79	61.5	45	80	62.5	46	80	63.0	51	81	66.0	46	75	60.5	44	73	58.5	41	70	55.5	
11/05	39	89	64.0	40	82	61.0	44	82	63.0	46	81	63.5	44	81	62.5	44	83	63.5	46	83	64.5	46	80	63.0	44	81	62.5	44	72	58.0	42	70	56.0	42	67	54.5	
11/06	40	83	61.5	43	82	62.5	44	81	62.5	43	82	62.5	43	81	62.0	44	83	63.5	47	82	64.5	44	79	61.5	43	78	60.5	43	71	57.0	42	66	54.0	44	66	55.0	
11/07	42	82	62.0	39	83	61.0	41	84	62.5	43	84	63.5	44	83	63.5	45	83	64.0	44	78	61.0	42	77	59.5	45	74	59.5	46	65	55.5	47	62	54.5	45	61	53.0	
11/08	39	76	57.5	39	83	61.0	39	83	61.0	42	84	63.0	47	83	65.0	45	78	61.5	43	77	60.0	41	74	57.5	44	71	57.5	42	73	57.5	45	69	57.0	41	66	53.5	
11/09	39	83	61.0	39	83	61.0	42	84	63.0	46	83	64.5	45	78	61.5	41	75	58.0	40	71	55.5	39	69	54.0	49	74	61.5	42	68	55.0	40	68	54.0	43	67	55.0	
11/10	40	81	60.5	40	83	61.5	47	83	65.0	42	79	60.5	40	77	58.5	39	70	54.5	38	69	53.5	37	73	55.0	44	69	56.5	42	68	55.0	37	65	51.0	37	62	49.5	
11/11	43	87	65.0	43	85	64.0	42	78	60.0	42	79	60.5	41	74	57.5	39	72	55.5	38	75	56.5	40	74	57.0	44	72	58.0	45	65	55.0	38	67	52.5	39	65	52.0	
11/12	54	86	70.0	54	76	65.0	42	76	59.0	41	71	56.0	38	72	55.0	39	77	58.0	42	80	61.0	42	76	59.0	42	65	53.5	37	61	49.0	35	60	47.5	34	60	47.0	
11/13	45	77	61.0	44	76	60.0	41	71	56.0	39	71	55.0	40	78	59.0	41	82	61.5	41	78	59.5	38	70	54.0	48	67	57.5	36	67	51.5	37	64	50.5	37	66	51.5	
11/14	44	75	59.5	49	71	60.0	40	70	55.0	40	77	58.5	42	81	61.5	42	79	60.5	40	71	55.5	37	69	53.0	43	70	56.5	39	67	53.0	37	63	50.0	38	60	49.0	
11/15	48	71	59.5	54	71	62.5	40	80	60.0	42	84	63.0	42	81	61.5	41	71	56.0	38	69	53.5	36	70	53.0	39	68	53.5	41	68	54.5	40	66	53.0	38	65	51.5	
11/16	48	71	59.5	49	80	64.5	42	84	63.0	42	80	61.0	40	71	55.5	38	68	53.0	37	69	53.0	33	69	51.0	37	68	52.5	38	66	52.0	39	61	50.0	38	60	49.0	
11/17	47	80	63.5	47	84	65.5	42	80	61.0	40	70	55.0	40	68	54.0	36	70	53.0	34	70	52.0	33	71	52.0	36	66	51.0	38	60	49.0	34	57	45.5	33	62	47.5	
11/18	46	87	66.5	50	78	64.0	41	69	55.0	44	66	55.0	38	66	52.0	32	68	50.0	33	71	52.0	33	72	52.5	39	62	50.5	40	60	50.0	34	57	45.5	39	57	48.0	
11/19	47	78	62.5	46	68	57.0	42	67	54.5	34	66	50.0	32	68	50.0	32	71	51.5	33	71	52.0	34	65	49.5	46	65	55.5	36	58	47.0	35	57	46.0	38	55	46.5	
11/20	45	72	58.5	57	68	62.5	35	67	51.0	32	68	50.0	32	71	51.5	33	71	52.0	33	65	49.0	31	62	46.5	35	52	43.5	34	53	43.5	32	54	43.0	34	55	44.5	
11/21	57	67	62.0	50	67	58.5	33	69	51.0	33	72	52.5	34	70	52.0	34	66	50.0	31	59	45.0	31	55	43.0	35	55	45.0	36	52	44.0	34	55	44.5	37	60	48.5	
11/22	41	68	54.5	37	69	53.0	33	73	53.0	34	74	54.0	36	66	51.0	31	55	43.0	28	51	39.5	25	52	38.5	35	55	45.0	34	57	45.5	33	54	43.5	37	56	46.5	
11/23	35	68	51.5	35	73	54.0	34	72	53.0	35	64	49.5	30	53	41.5	29	47	38.0	26	50	38.0	26	52	39.0	32	56	44.0	39	55	47.0	35	59	47.0	39	61	50.0	
11/24	35	73	54.0	32	72	52.0	34	62	48.0	29	51	40.0	29	48	38.5	25	47	36.0	21	49	35.0	23	48	35.5	39	53	46.0	43	57	50.0	40	62	51.0	39	58	48.5	
11/25	32	69	50.5	35	59	47.0	31	48	39.5	34	47	40.5	28	47	37.5	25	48	36.5	22	49	35.5	27	50	38.5	42	55	48.5	41	60	50.5	41	59	50.0	41	57	49.0	
11/26	35	62	48.5	33	41	37.0	31	44	37.5	26	47	36.5	23	46	34.5	28	46	37.0	30	50	40.0	35	56	45.5	40	58	49.0	42	59	50.5	39	58	48.5	40	57	48.5	
11/27	31	44	37.5	31	47	39.0	26	48	37.0	24	47	35.5	27	45	36.0	30	50	40.0	35	56	45.5	34	59	46.5	40	57	48.5	44	54	49.0	39	54	46.5	37	55	46.0	
11/28	36	50	43.0	36	50	43.0	21	48	34.5	26	47	36.5	31	50	40.5	36	54	45.0	36	59	47.5	34	60	47.0	39	57	48.0	43	52	47.5	38	54	46.0	36	58	47.0	
11/29	36	50	43.0	31	50	40.5	30	47	38.5	30	49	39.5	36	54	45.0	37	58	47.5	34	58	46.0	35	55	45.0	48	55	51.5	44	54	49.0	38	55	46.5	39	54	46.5	
11/30	30	48	39.0	38	44	41.0	31	48	39.5	37	53	45.0	37	57	47.0	36	58	47.0	37	55	46.0	38	55	46.5	44	55	49.5	42	57	49.5	37	56	46.5	35	55	45.0	
-																																					

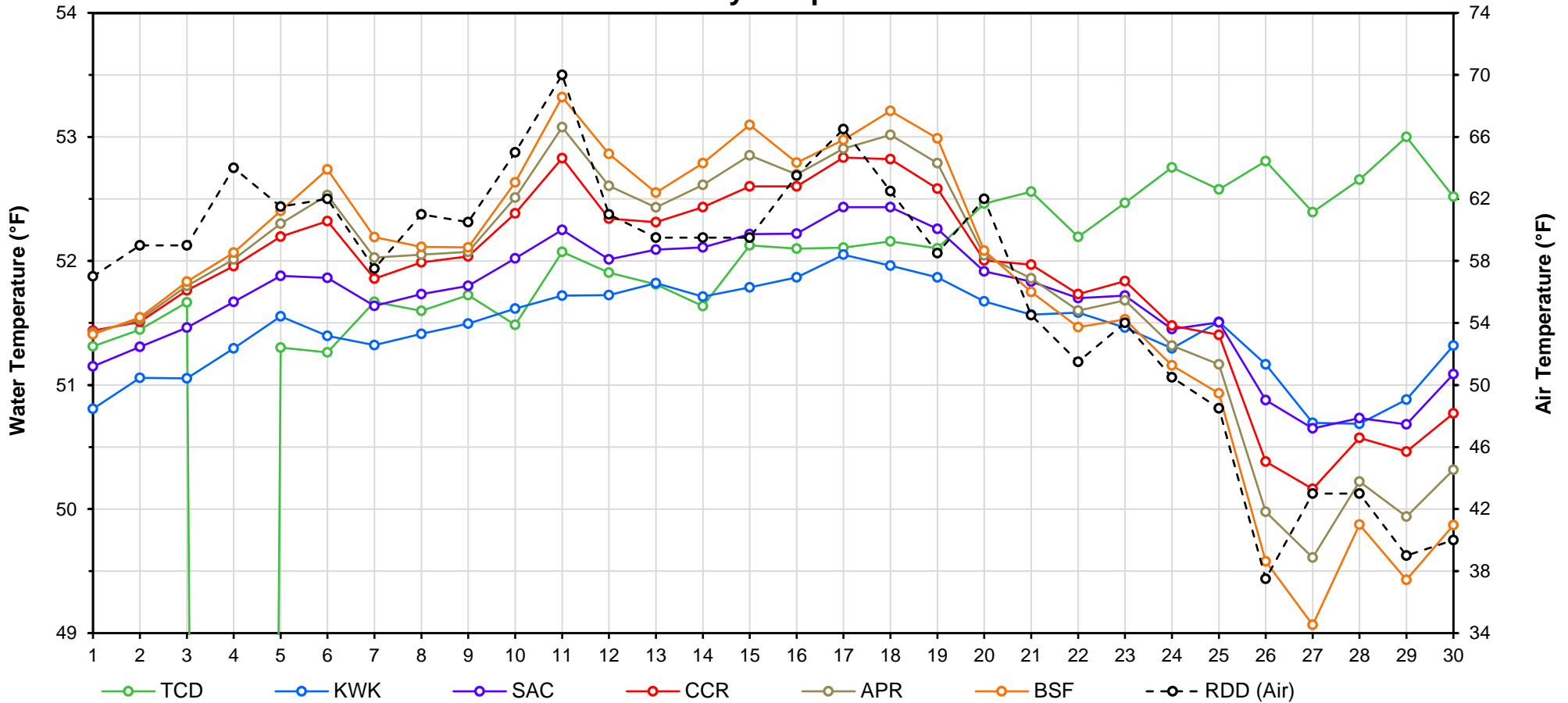
Web Links

- [10-Day Min/Max Forecast](#)
- [Previous Days Min/Max Actuals](#)

Legend

- NR = Forecasted temperatures not recorded
- 100** = Previous day actual temperatures in red and bolded indicate a record temperature for that date

Mean Daily Temperatures



Station Details			
Code	Body of Water	Location ¹	CDEC Link
TCD	N/A	Shasta Power Plant	N/A
SHD	Sacramento River	0.3 miles downstream of Shasta Power Plant	Click Here
SPP	N/A	Spring Creek Power Plant	N/A
KWK	Sacramento River	0.8 miles downstream of Keswick Dam	Click Here
SAC	Sacramento River	4.8 miles downstream of Keswick Dam	Click Here
CCR	Sacramento River	9.7 miles downstream of Keswick Dam	Click Here
BSF	Sacramento River	25 miles downstream of Keswick Dam	Click Here
JLF	Sacramento River	34 miles downstream of Keswick Dam	Click Here
BND	Sacramento River	41 miles downstream of Keswick Dam	Click Here
RDB	Sacramento River	58 miles downstream of Keswick Dam	Click Here
IGO	Clear Creek	7.3 miles downstream of Whiskeytown Dam	Click Here
LWS	Trinity River	1.1 miles downstream of Lewiston Dam	Click Here
DGC ²	Trinity River	19 miles downstream of Lewiston Dam	Click Here
NFH ³	Trinity River	38 miles downstream of Lewiston Dam	Click Here

Temperature Control Point		
Point	Temp. (°F)	Begin Date
BSF	56.0	5/15/2019

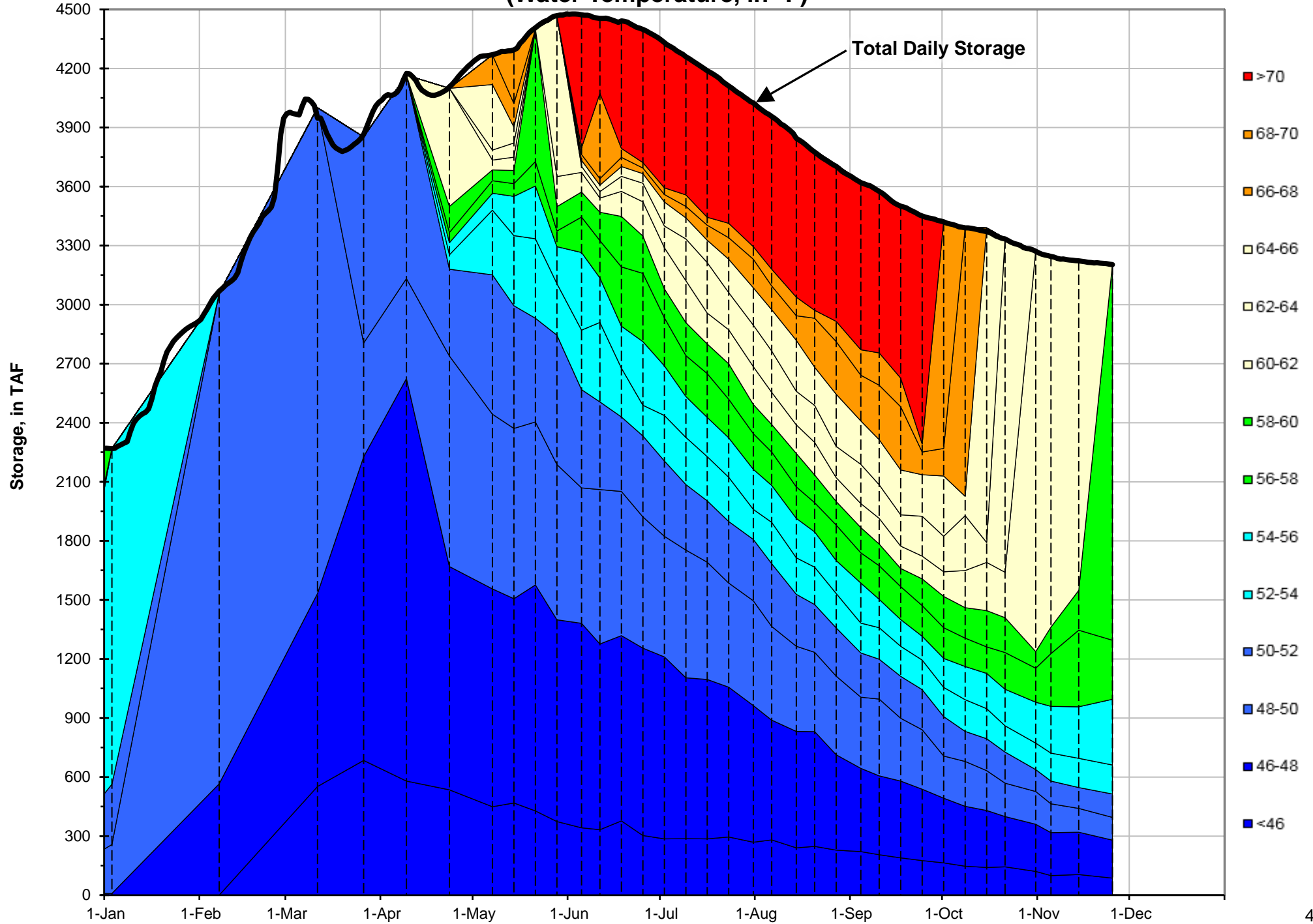
Notes

¹ Distances are approximate

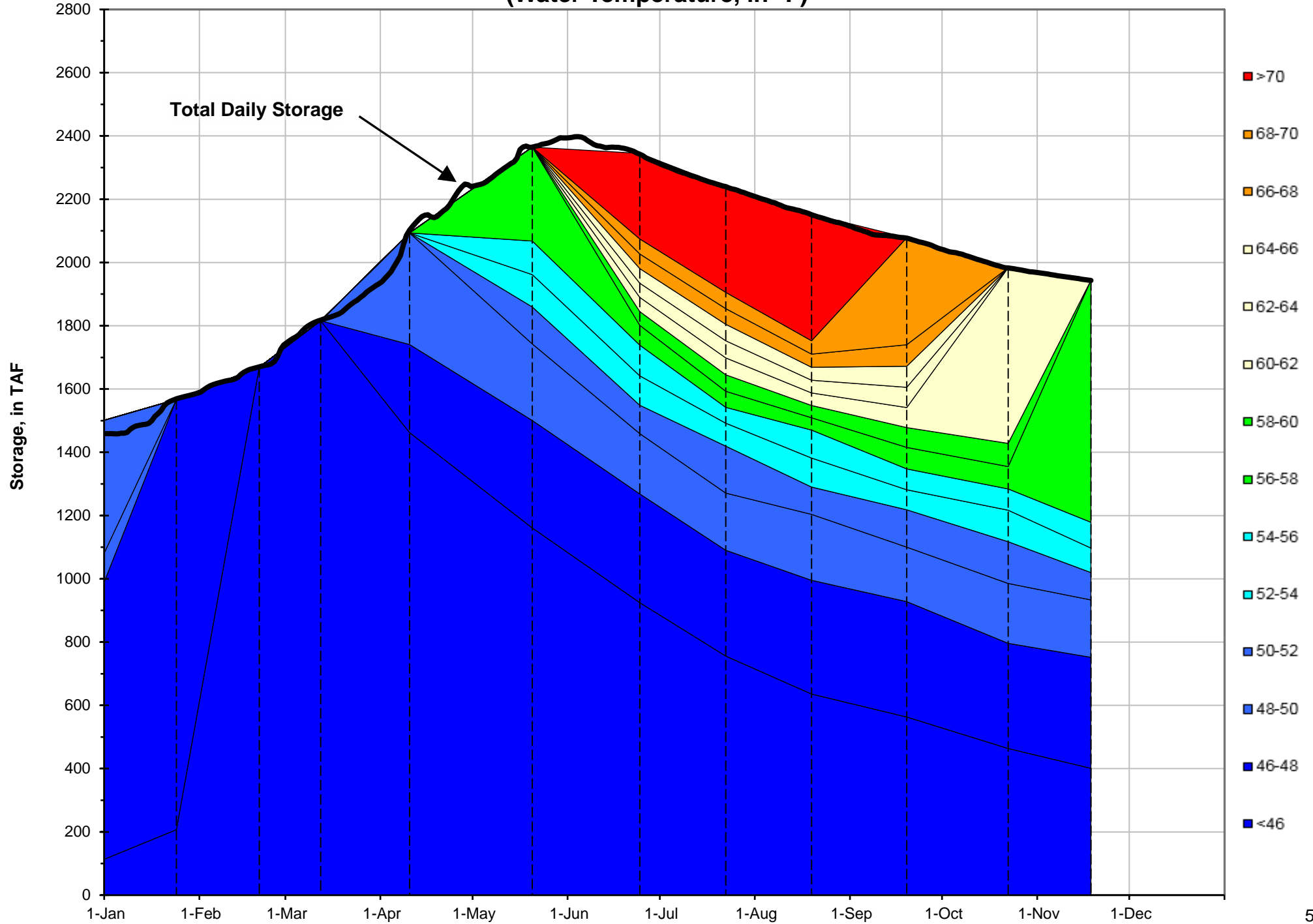
² DGC is only reported in September

³ NFH is only reported in October, November and December

Shasta Lake Isothermobaths - 2019 (Water Temperature, in °F)



Trinity Lake Isothermobaths - 2019 (Water Temperature, in °F)



Whiskeytown Lake Isothermobaths - 2019 (Water Temperature, in °F)

