

Northern CVP Water Temperature Report

November - 2018

Page	Description
1	- Mean Daily Water Temperature, Release Flow Rates and Air Temperatures with Monthly Averages
2	- Redding 10-Day Forecasted Air Temperatures
3	- Sacramento River Mean Daily Water Temperature, Air Temperature and 10-Day Forecasted Air Temperature Plot - Water Temperature Measuring Station Details - Temperature Control Point Details
4	- Daily Maximum and 7DADM
5	- Shasta Lake Isothermobaths Plot
6	- Trinity Lake Isothermobaths Plot
7	- Whiskeytown Lake Isothermobaths Plot
x	- TCD Configuration (External Link)



All Data in this Report is Preliminary and Subject to Change

DATE	Mean Daily Water Temperatures (°F)													Mean Daily Release (CFS)			Mean Daily Air Temperatures (°F)			
	TCD ¹	SHD	SPP ¹	KWK	SAC	CCR	BSF ²	JLF	BND	RDB	IGO	LWS	NFH ³	Shasta Generation	Spring Creek P.P.	Keswick Total	RDD	BSF	RDB	LWS
Oct	53.8	53.1	57.3	53.7	53.9	54.2	54.9	55.3	55.4	56.0	55.5	50.2	53.3	6370	267	7306	66.6	60.8	63.9	54.4
11/01	54.5	54.3	57.6	54.0	54.2	54.5	? 55.2	55.4	55.4	55.6	56.7	# -	50.6	6418	22	6148	71.0	65.9	68.5	-
11/02	54.7	54.4	57.7	54.4	54.3	54.5	55.1	55.5	55.5	56.2	56.5	# -	51.6	5532	25	5790	65.0	59.2	64.2	-
11/03	55.0	54.9	57.7	54.5	54.4	54.7	? 55.3	55.6	55.6	55.9	56.4	# -	51.3	5038	24	5590	70.5	68.2	71.6	-
11/04	55.1	54.9	57.4	54.5	54.3	54.4	? 54.8	55.1	55.2	55.7	56.0	# -	50.9	4859	82	5122	62.0	56.7	62.6	-
11/05	55.3	55.0	57.1	54.7	54.6	54.7	54.9	54.9	54.7	55.0	55.6	# -	50.2	4430	188	5160	66.0	58.3	63.5	-
11/06	55.2	55.2	57.7	54.7	54.5	54.5	54.5	54.6	54.5	54.7	? 54.7	# -	48.7	3999	16	4915	65.5	60.3	62.9	-
11/07	55.5	55.1	57.4	? 54.6	54.4	54.4	54.2	54.0	53.7	54.0	54.5	# -	47.1	3991	29	4714	58.0	54.8	58.7	-
11/08	55.5	55.6	57.3	54.3	54.1	53.9	53.5	53.3	52.9	53.1	54.4	# -	45.6	4475	26	4604	64.0	56.7	59.0	-
11/09	55.2	55.0	57.5	54.2	53.9	53.9	53.4	52.9	52.4	52.5	54.3	# -	44.4	4472	17	4603	56.5	47.3	49.8	-
11/10	55.3	55.0	56.9	54.4	54.2	54.1	53.4	52.9	52.3	52.3	53.8	# -	43.9	3490	301	4608	53.5	50.2	54.2	-
11/11	55.3	55.5	57.0	54.4	54.1	54.1	53.5	53.2	52.7	52.7	53.7	# -	43.7	3751	340	4604	59.0	54.8	57.8	-
11/12	55.0	55.1	57.0	54.3	54.1	54.0	53.5	53.0	52.4	52.5	53.5	# -	43.4	3649	337	4600	55.5	48.7	52.0	-
11/13	55.1	54.9	57.0	54.3	53.9	53.7	53.1	52.7	52.2	52.2	53.4	# -	43.5	3714	301	4651	50.0	43.5	46.4	-
11/14	55.2	55.3	56.9	54.3	54.0	53.8	53.0	52.4	51.8	51.7	53.5	# -	44.1	3722	447	4631	51.0	42.7	46.2	-
11/15	55.3	55.2	56.9	54.3	53.9	53.7	53.0	52.5	51.9	51.7	53.7	# -	43.7	3773	800	4638	49.0	42.8	45.2	-
11/16	55.1	54.4	56.7	54.4	54.2	53.9	53.0	52.5	51.9	51.7	53.8	# -	43.6	2975	493	4630	49.5	42.7	46.5	-
11/17	54.8	54.7	56.6	54.4	54.1	53.9	53.1	52.5	51.9	51.6	53.8	# -	43.5	3871	330	4627	49.5	42.0	44.9	-
11/18	55.1	55.3	56.5	54.2	54.0	53.8	53.1	52.6	52.0	51.8	53.6	# -	43.5	3880	387	4633	50.0	43.3	45.8	-
11/19	55.1	54.8	56.4	54.3	54.0	53.9	53.1	52.6	52.0	51.9	53.3	# -	43.0	3812	574	4629	52.0	44.5	47.8	-
11/20	54.9	54.6	56.3	54.2	53.9	53.9	53.1	52.6	52.0	51.9	52.9	# -	42.6	3953	480	4628	48.5	43.5	47.4	-
11/21	55.1	54.7	56.4	54.2	53.9	53.7	53.2	52.8	52.4	52.1	53.2	# -	44.1	3897	539	4629	48.0	45.3	46.3	-
11/22	55.2	54.7	56.1	54.1	53.9	53.9	53.7	53.5	53.3	53.1	53.2	# -	45.7	3175	613	4626	53.0	53.1	53.3	-
11/23	54.7	54.3	56.6	54.2	54.0	53.9	53.7	53.6	53.5	53.5	53.2	# -	46.2	4062	47	4629	53.0	54.2	53.8	-
11/24	54.7	54.5	55.8	54.3	54.3	54.4	54.4	54.5	54.4	54.5	53.9	# -	46.6	3891	289	4657	56.0	54.7	55.9	-
11/25	54.6	54.6	55.8	54.2	54.2	54.3	54.1	54.0	53.8	54.3	53.7	# -	46.8	3898	407	4668	56.5	50.8	53.8	-
11/26	54.6	54.2	56.1	54.2	54.0	54.0	53.9	53.8	53.6	53.7	53.2	# -	47.1	3863	46	4366	53.0	49.4	50.6	-
11/27	54.6	54.2	55.7	54.0	53.8	53.7	53.6	53.5	53.3	53.4	52.4	# -	47.1	3660	35	4141	50.0	49.6	50.6	-
11/28	54.5	54.3	55.6	53.9	53.9	54.0	53.7	53.7	53.6	53.7	52.9	# -	47.6	3714	37	3987	54.5	53.6	54.1	-
11/29	55.0	54.2	54.9	53.8	53.4	53.4	# -	53.5	53.5	53.7	51.9	# -	47.9	1251	1102	3981	49.0	-	50.0	-
11/30	54.4	54.6	54.6	53.8	53.4	53.2	!	52.0	51.8	52.2	52.3	# -	46.5	2605	638	3983	46.5	-	46.4	-
-																				
Nov	55.0	54.8	56.6	54.3	54.1	54.0	53.8	53.5	53.2	53.3	53.9	-	46.2	3927	299	4706	55.5	51.3	53.7	-

Total CFS	117820	8972	141192
Total AF	233691	17796	280049

Legend

- ? = 1-9 hours of data missing (Average includes estimations)
- ! = 10 or more hours of data missing (Average not calculated)
- # = Station out of service
- ↑ = Record high air temperature
- ↓ = Record low air temperature
- = Monthly Averages

Notes

- ¹ Temperatures are weighted averages based on individual penstock flow and temperature
- Highlighted cells in the TCD column indicate a TCD change was made on that day
- ² Current control point (see page 3 for more details)
- ³ NFH is only reported in October, November and December

D A T E	Redding (RDD) Daily Air Temperatures (°F)																																				
	Actual			Forecasted																																	
	Previous Day			Current Day			1 Day			2 Days			3 Days			4 Days			5 Days			6 Days			7 Days			8 Days			9 Days			10 Days			
	↓	↑	Avg	↓	↑	Avg	↓	↑	Avg	↓	↑	Avg	↓	↑	Avg	↓	↑	Avg	↓	↑	Avg	↓	↑	Avg	↓	↑	Avg	↓	↑	Avg	↓	↑	Avg	↓	↑	Avg	
11/01	57	78	67.5	61	83	72.0	52	82	67.0	52	84	68.0	51	80	65.5	50	77	63.5	47	78	62.5	48	78	63.0	45	75	60.0	48	70	59.0	44	65	54.5	41	62	51.5	
11/02	55	87	71.0	48	82	65.0	51	83	67.0	48	79	63.5	48	77	62.5	47	78	62.5	47	78	62.5	46	78	62.0	48	76	62.0	46	72	59.0	40	67	53.5	41	67	54.0	
11/03	46	84	65.0	59	83	71.0	48	81	64.5	46	77	61.5	43	77	60.0	42	75	58.5	44	77	60.5	41	77	59.0	42	72	57.0	43	68	55.5	38	66	52.0	38	70	54.0	
11/04	57	84	70.5	49	80	64.5	45	78	61.5	43	78	60.5	42	75	58.5	41	76	58.5	41	77	59.0	44	76	60.0	46	79	62.5	43	69	56.0	42	63	52.5	42	66	54.0	
11/05	48	76	62.0	57	76	66.5	45	76	60.5	48	75	61.5	48	75	61.5	44	76	60.0	41	75	58.0	44	76	60.0	44	73	58.5	41	69	55.0	44	67	55.5	41	63	52.0	
11/06	56	76	66.0	56	77	66.5	43	75	59.0	42	73	57.5	38	74	56.0	42	77	59.5	42	77	59.5	44	77	60.5	46	76	61.0	42	73	57.5	42	69	55.5	42	64	53.0	
11/07	55	76	65.5	44	74	59.0	42	72	57.0	38	74	56.0	41	76	58.5	42	76	59.0	44	77	60.5	42	75	58.5	41	77	59.0	43	70	56.5	42	66	54.0	39	66	52.5	
11/08	43	73	58.0	55	73	64.0	39	75	57.0	38	76	57.0	41	75	58.0	41	76	58.5	41	74	57.5	42	78	60.0	45	77	61.0	42	69	55.5	42	67	54.5	41	60	50.5	
11/09	55	73	64.0	38	75	56.5	38	76	57.0	40	73	56.5	38	74	56.0	40	73	56.5	41	76	58.5	42	75	58.5	42	74	58.0	42	67	54.5	42	62	52.0	40	63	51.5	
11/10	36	77	56.5	36	75	55.5	37	73	55.0	38	74	56.0	38	74	56.0	38	75	56.5	44	75	59.5	44	74	59.0	45	64	54.5	43	61	52.0	41	62	51.5	39	62	50.5	
11/11	31	76	53.5	55	73	64.0	39	72	55.5	38	71	54.5	39	73	56.0	43	74	58.5	43	75	59.0	42	72	57.0	41	75	58.0	41	70	55.5	41	67	54.0	41	63	52.0	
11/12	45	73	59.0	33	72	52.5	40	73	56.5	38	73	55.5	42	74	58.0	42	74	58.0	41	74	57.5	41	70	55.5	40	74	57.0	37	65	51.0	39	61	50.0	40	64	52.0	
11/13	33	78	55.5	35	71	53.0	36	75	55.5	41	75	58.0	42	75	58.5	42	73	57.5	40	72	56.0	39	71	55.0	41	73	57.0	40	64	52.0	41	64	52.5	40	65	52.5	
11/14	34	66	50.0	32	73	52.5	40	74	57.0	39	75	57.0	40	72	56.0	41	72	56.5	39	71	55.0	38	67	52.5	41	59	50.0	43	60	51.5	41	60	50.5	41	59	50.0	
11/15	32	70	51.0	32	72	52.0	39	73	56.0	40	73	56.5	40	72	56.0	40	71	55.5	39	69	54.0	39	63	51.0	40	71	55.5	40	61	50.5	43	61	52.0	44	60	52.0	
11/16	29	69	49.0	32	70	51.0	33	71	52.0	41	72	56.5	40	70	55.0	39	67	53.0	39	62	50.5	39	59	49.0	49	59	54.0	50	61	55.5	46	61	53.5	45	62	53.5	
11/17	30	69	49.5	31	72	51.5	37	71	54.0	36	71	53.5	38	67	52.5	39	55	47.0	39	55	47.0	38	57	47.5	45	57	51.0	41	61	51.0	43	62	52.5	41	63	52.0	
11/18	31	68	49.5	31	71	51.0	35	70	52.5	36	70	53.0	40	54	47.0	40	54	47.0	42	56	49.0	37	57	47.0	42	64	53.0	45	67	56.0	44	65	54.5	42	60	51.0	
11/19	29	71	50.0	30	72	51.0	34	69	51.5	40	53	46.5	43	54	48.5	43	55	49.0	44	57	50.5	39	62	50.5	46	68	57.0	43	66	54.5	42	62	52.0	42	59	50.5	
11/20	29	75	52.0	31	69	50.0	43	53	48.0	46	53	49.5	43	58	50.5	38	58	48.0	34	63	48.5	34	65	49.5	41	67	54.0	44	61	52.5	44	60	52.0	40	54	47.0	
11/21	30	67	48.5	45	53	49.0	42	54	48.0	43	58	50.5	37	60	48.5	35	63	49.0	35	64	49.5	38	60	49.0	48	61	54.5	44	58	51.0	40	57	48.5	41	56	48.5	
11/22	44	52	48.0	49	55	52.0	48	57	52.5	44	60	52.0	40	64	52.0	38	65	51.5	39	60	49.5	37	60	48.5	49	60	54.5	45	58	51.5	40	58	49.0	42	58	50.0	
11/23	49	57	53.0	51	55	53.0	42	61	51.5	36	64	50.0	39	62	50.5	43	57	50.0	37	58	47.5	37	56	46.5	47	57	52.0	40	59	49.5	40	60	50.0	40	56	48.0	
11/24	51	55	53.0	48	62	55.0	40	64	52.0	39	64	51.5	44	56	50.0	43	56	49.5	36	55	45.5	33	54	43.5	43	56	49.5	37	58	47.5	37	57	47.0	37	55	46.0	
11/25	48	64	56.0	43	65	54.0	39	64	51.5	41	55	48.0	41	55	48.0	40	54	47.0	34	53	43.5	32	54	43.0	36	56	46.0	38	59	48.5	38	58	48.0	40	58	49.0	
11/26	42	71	56.5	44	63	53.5	43	55	49.0	43	56	49.5	42	55	48.5	35	53	44.0	34	56	45.0	32	55	43.5	41	58	49.5	39	57	48.0	38	55	46.5	39	58	48.5	
11/27	43	63	53.0	46	55	50.5	44	56	50.0	42	56	49.0	35	53	44.0	38	52	45.0	29	52	40.5	27	55	41.0	37	58	47.5	41	58	49.5	37	59	48.0	40	56	48.0	
11/28	46	54	50.0	52	56	54.0	44	54	49.0	35	54	44.5	35	50	42.5	29	51	40.0	28	52	40.0	32	55	43.5	39	59	49.0	38	59	48.5	39	57	48.0	39	57	48.0	
11/29	52	57	54.5	51	54	52.5	36	54	45.0	34	51	42.5	26	50	38.0	27	47	37.0	31	50	40.5	35	54	44.5	40	60	50.0	41	58	49.5	40	58	49.0	39	58	48.5	
11/30	44	54	49.0	38	54	46.0	38	51	44.5	28	50	39.0	26	50	38.0	31	50	40.5	33	55	44.0	31	57	44.0	41	57	49.0	41	58	49.5	40	60	50.0	38	61	49.5	
-																																					

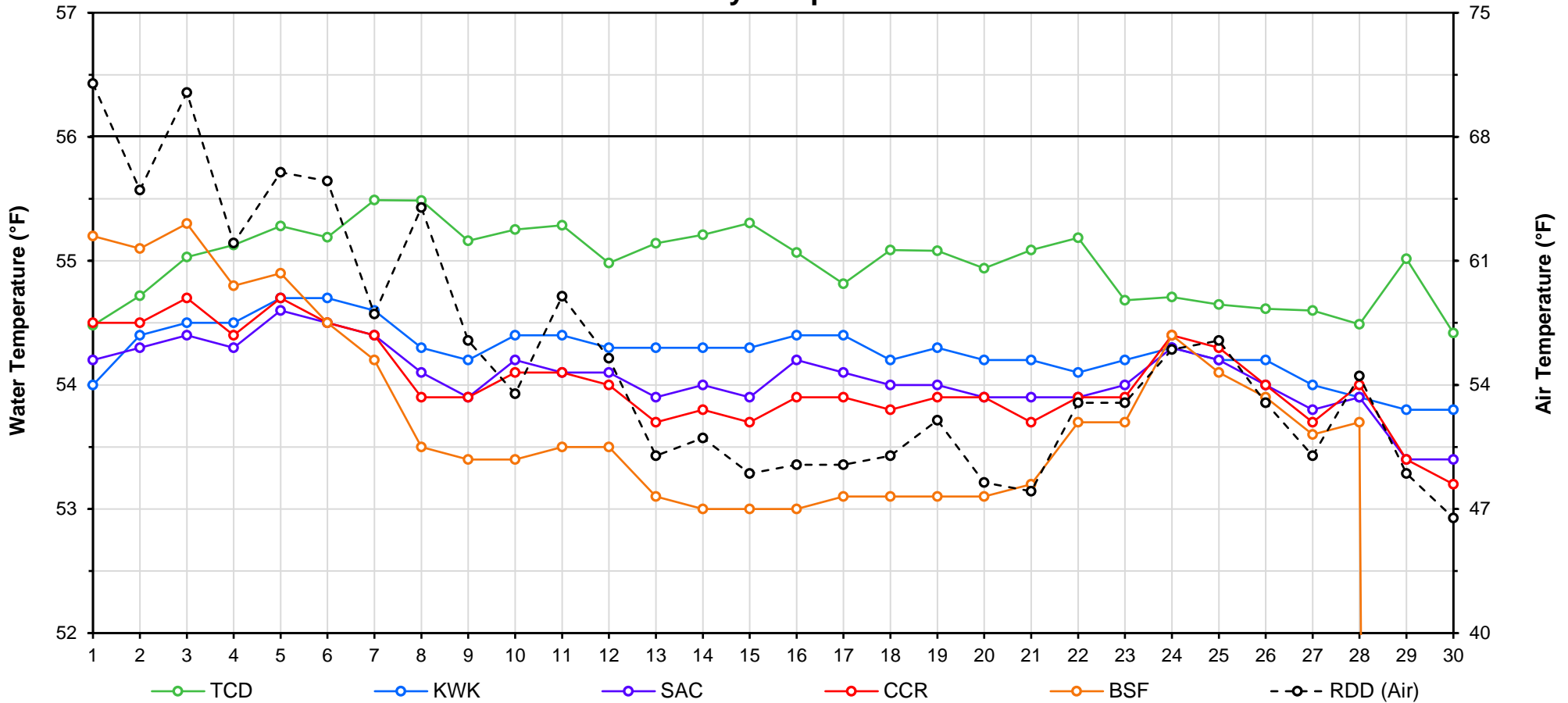
Web Links

- [10-Day Min/Max Forecast](#)
- [Previous Days Min/Max Actuals](#)

Legend

- NR = Forecasted temperatures not recorded
- 100** = Previous day actual temperatures in red and bolded indicate a record temperature for that date

Mean Daily Temperatures



Station Details			
Code	Body of Water	Location ¹	CDEC Link
TCD	N/A	Shasta Power Plant	N/A
SHD	Sacramento River	0.3 miles downstream of Shasta Power Plant	Click Here
SPP	N/A	Spring Creek Power Plant	N/A
KWK	Sacramento River	0.8 miles downstream of Keswick Dam	Click Here
SAC	Sacramento River	4.8 miles downstream of Keswick Dam	Click Here
CCR	Sacramento River	9.7 miles downstream of Keswick Dam	Click Here
BSF	Sacramento River	25 miles downstream of Keswick Dam	Click Here
JLF	Sacramento River	34 miles downstream of Keswick Dam	Click Here
BND	Sacramento River	41 miles downstream of Keswick Dam	Click Here
RDB	Sacramento River	58 miles downstream of Keswick Dam	Click Here
IGO	Clear Creek	7.3 miles downstream of Whiskeytown Dam	Click Here
LWS	Trinity River	1.1 miles downstream of Lewiston Dam	Click Here
DGC ²	Trinity River	19 miles downstream of Lewiston Dam	Click Here
NFH ³	Trinity River	38 miles downstream of Lewiston Dam	Click Here

Temperature Control Point		
Point	Temp. (°F)	Begin Date
BSF	56.0	05/25/2018

Notes

¹ Distances are approximate

² DGC is only reported in September

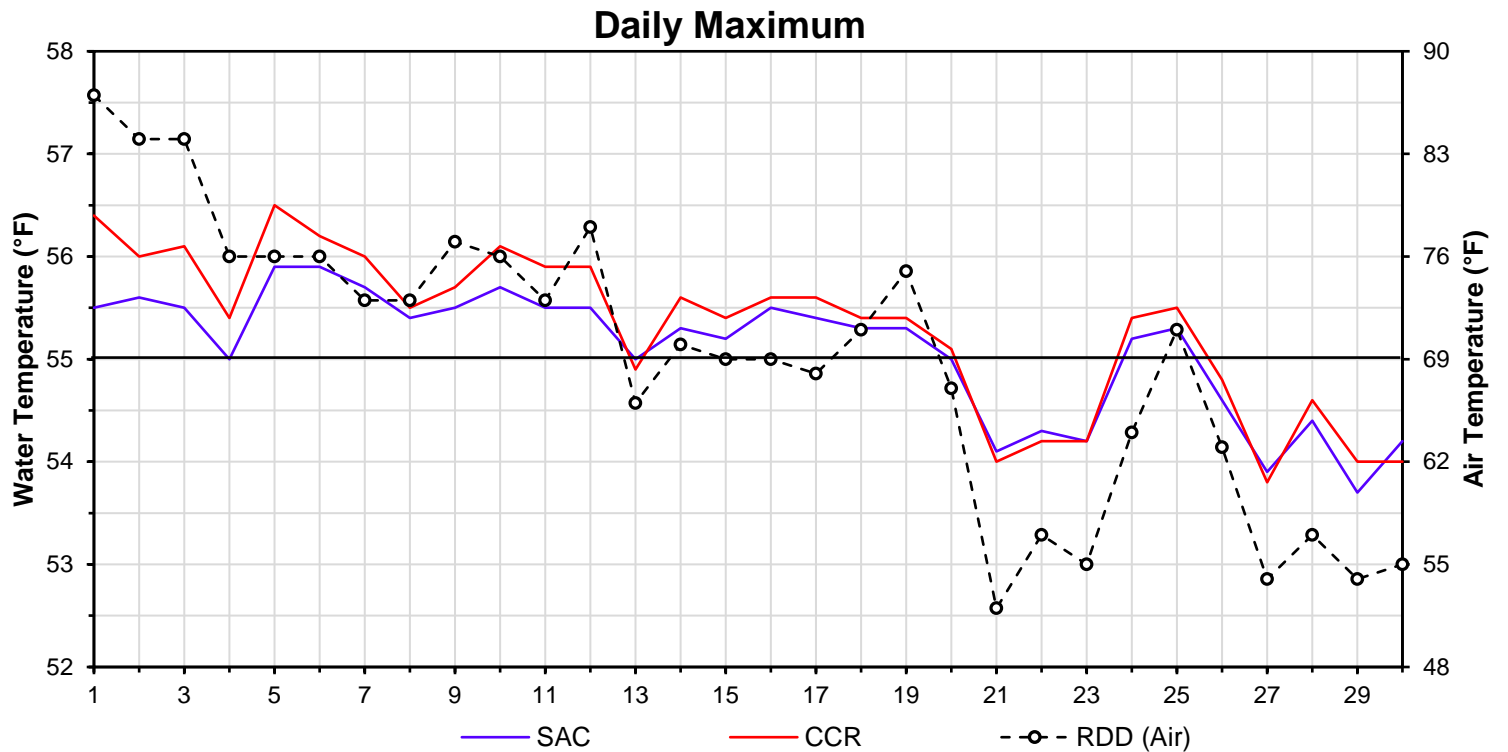
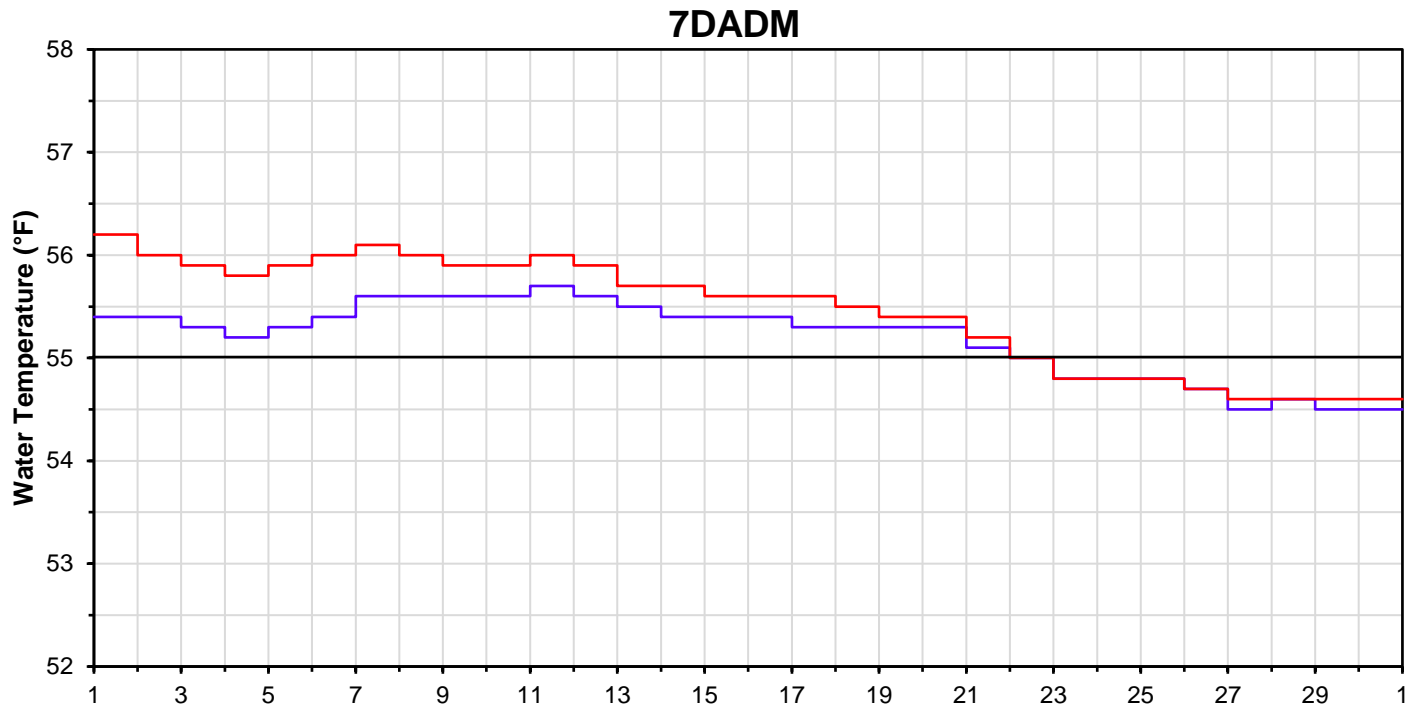
³ NFH is only reported in October, November and December

DATE	Daily Max		7DADM ¹		DAT ²
	SAC	CCR	SAC	CCR	BSF
11/01	55.5	56.4	55.4	56.2	55.2
11/02	55.6	56.0	55.4	56.0	55.1
11/03	55.5	56.1	55.3	55.9	55.3
11/04	55.0	55.4	55.2	55.8	54.8
11/05	55.9	56.5	55.3	55.9	54.9
11/06	55.9	56.2	55.4	56.0	54.5
11/07	55.7	56.0	55.6	56.1	54.2
11/08	55.4	55.5	55.6	56.0	53.5
11/09	55.5	55.7	55.6	55.9	53.4
11/10	55.7	56.1	55.6	55.9	53.4
11/11	55.5	55.9	55.7	56.0	53.5
11/12	55.5	55.9	55.6	55.9	53.5
11/13	55.0	54.9	55.5	55.7	53.1
11/14	55.3	55.6	55.4	55.7	53.0
11/15	55.2	55.4	55.4	55.6	53.0
11/16	55.5	55.6	55.4	55.6	53.0
11/17	55.4	55.6	55.3	55.6	53.1
11/18	55.3	55.4	55.3	55.5	53.1
11/19	55.3	55.4	55.3	55.4	53.1
11/20	55.0	55.1	55.3	55.4	53.1
11/21	54.1	54.0	55.1	55.2	53.2
11/22	54.3	54.2	55.0	55.0	53.7
11/23	54.2	54.2	54.8	54.8	53.7
11/24	55.2	55.4	54.8	54.8	54.4
11/25	55.3	55.5	54.8	54.8	54.1
11/26	54.6	54.8	54.7	54.7	53.9
11/27	53.9	53.8	54.5	54.6	53.6
11/28	54.4	54.6	54.6	54.6	53.7
11/29	53.7	54.0	54.5	54.6	-
11/30	54.2	54.0	54.5	54.6	-
-					

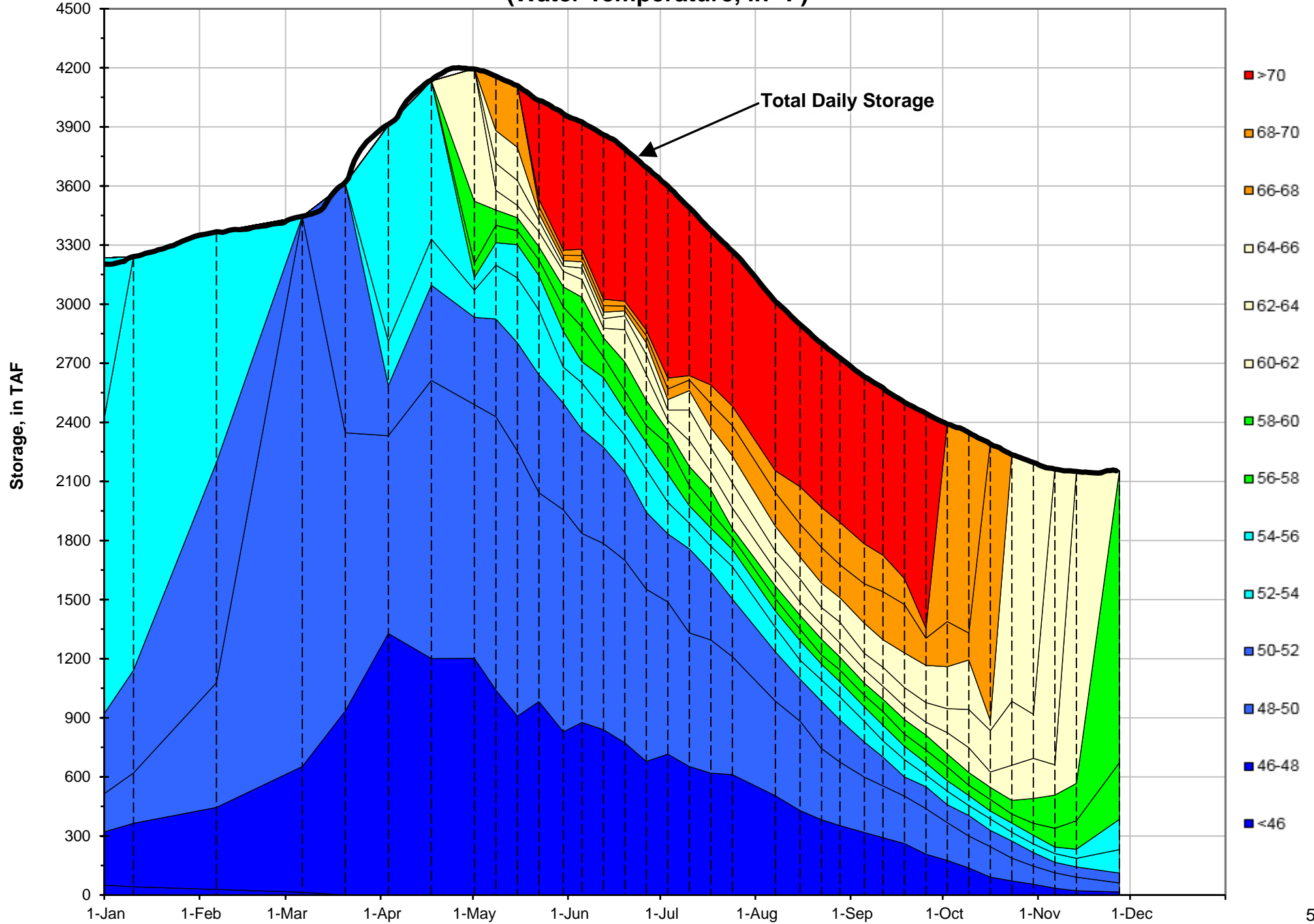
Notes

¹ 7DADM = 7-Day Average
Daily Maximum

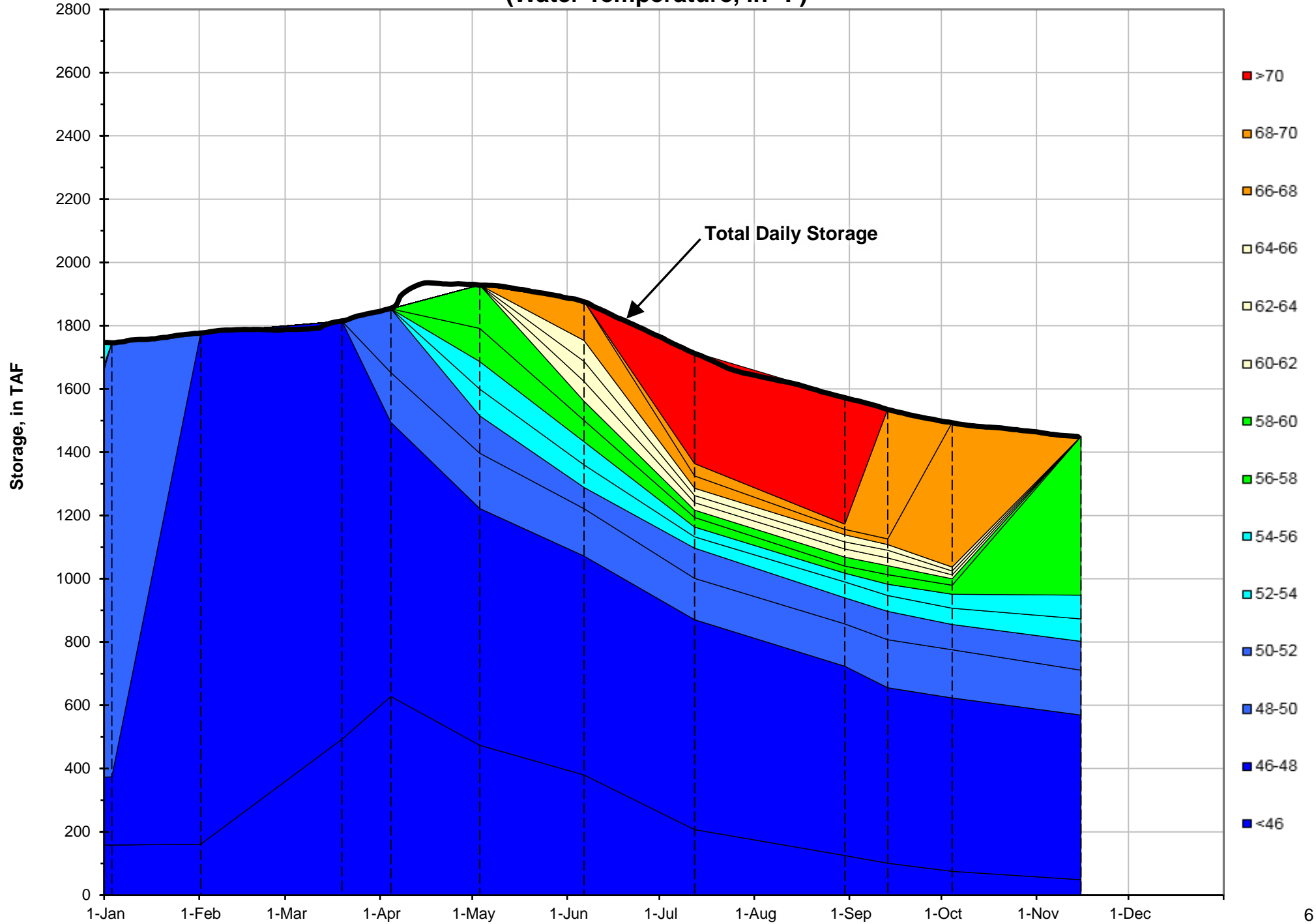
² DAT = Daily Average
Temperature



Shasta Lake Isothermobaths - 2018 (Water Temperature, in °F)



Trinity Lake Isothermobaths - 2018 (Water Temperature, in °F)



Whiskeytown Lake Isothermobaths - 2018 (Water Temperature, in °F)

