

# Northern CVP Water Temperature Report

## October - 2021

Page	Description
2	- Mean Daily Water Temperature, Release Flow Rates and Air Temperatures with Monthly Averages
3	- Redding 10-Day Forecasted Air Temperatures
4	- Sacramento River Mean Daily Water Temperature, Air Temperature and 10-Day Forecasted Air Temperature Plot - Water Temperature Measuring Station Details - Temperature Control Point Details
5	- Shasta Lake Isothermobaths & Cold Water Pool Statistics
14	- Trinity Lake Isothermobaths & Cold Water Pool Statistics
23	- Whiskeytown Lake Isothermobaths & Cold Water Pool Statistics
x	- <a href="#">TCD Configuration</a> (External Link)



— BUREAU OF —  
RECLAMATION

All Data in this Report is Preliminary and Subject to Change

DATE	Mean Daily Water Temperatures (°F)														Mean Daily Release (CFS)			Mean Daily Air Temperatures (°F)		
	TCD <sup>1</sup>	SHD	SPP <sup>1</sup>	KWK	SAC <sup>2</sup>	CCR	BSF	JLF	BND	RDB	IGO	LWS	DGC	NFH	Shasta Generation	Spring Creek P.P.	Keswick Total	RDD	BSF	RDB
Sep	58.0	57.4	-	57.1	57.6	58.2	59.2	60.0	60.8	61.6	56.7	51.3	54.4	57.5	4935	1502	6835	76.4	70.5	73.6
10/01	61.0	? 59.5 #	-	58.2	58.7	59.2	59.9	60.2	60.7	61.2	56.1	51.4	54.1	57.4	5015	1773	6865	70.5	65.6	68.9
10/02	61.0	? 60.4 #	-	58.5	58.9	59.4	59.9	60.3	60.7	61.2	56.0	51.5	54.1	57.6	4846	1710	6864	73.5	66.4	69.8
10/03	61.2	60.2 #	-	58.6	59.0	59.5	60.0	60.4	60.8	61.3	55.8	52.0	54.2	57.7	4848	1804	6864	73.0	65.8	69.3
10/04	61.5	60.1 #	-	58.5	58.9	59.4	60.0	60.4	60.9	61.3	55.7	52.3	54.5	57.4	5048	1691	6868	71.5	65.0	68.5
10/05	61.6	60.1 #	-	58.7	58.9	59.2	59.7	60.0	60.6 ?	61.0	55.3	52.3	54.0	56.5	4646	1654	6855	67.5	63.6	66.9
10/06	61.8	60.9 #	-	58.7	58.9	59.3	59.8	60.0	60.4	60.5	55.7	52.5	54.9	56.8	4415	1656	6864	67.0	64.1	63.5
10/07	61.5	60.5 #	-	58.9	59.0	59.2	59.5	59.7	60.1	60.4	55.0	52.4	53.4	56.1	4650	1656	6857	62.5	59.4	59.9
10/08	61.8	60.7 #	-	58.7	58.9	59.1	59.2	59.3	59.6	59.8	54.5	52.8	52.0	54.4	4738	1655	6871	56.0	55.6	57.9
10/09	61.8	61.2 #	-	58.9	59.1	59.5	59.8	59.9	60.2 ?	60.2	55.4	53.2	53.1	54.3	4817	1660	6947	64.5	60.3	62.1
10/10	61.8	? 60.6 #	-	59.1	59.2	59.5	59.6	59.7	60.0	60.2	55.1	52.6	53.1	54.8	5101	1653	6871	64.0	60.3	62.7
10/11	62.2	61.2 #	-	59.1	59.1	59.0	58.9	59.0	59.3	59.2	54.3	52.2	52.0	53.7	4870	1656	6814	58.5	58.4	60.0
10/12	62.0	61.2 #	-	58.6	58.6	58.6	58.3	58.1	58.2	57.9	54.1	52.6	50.0	51.6	4960	1682	6810	59.5	54.4	57.5
10/13	62.1	61.2 #	-	59.1	59.1	59.3	59.2	59.1	59.2	58.8	54.8	52.3	52.4	52.8	4903	1666	6829	61.0	57.0	58.0
10/14	62.5	61.3 #	-	59.2	59.2	59.4	59.1	59.0	59.2	59.2	54.8	52.0	51.7	53.6	4562	1658	6812	64.5	61.2	63.5
10/15	62.3	61.7 #	-	59.2	59.3	59.6	59.4	59.3	59.4	59.3	54.9	52.3	51.3	52.9	4483	1653	6820	62.5	56.3	61.0
10/16	62.3	61.5 #	-	59.5	59.5	59.8	59.5	59.4	59.6	59.6	54.8	52.6	51.8	53.1	5066	1664	6802	62.0	56.4	60.6
10/17	62.0	60.8 #	-	59.8	59.4	59.3	59.0	59.0	59.3	59.1	54.0	52.3	51.0	52.1	5737	759	6795	57.5	54.3	56.4
10/18	62.0	60.9 #	-	59.6	59.5	59.6	59.3	59.0	59.1	58.5	54.3	52.5	50.2	52.3	5913	744	6881	52.0	51.3	52.8
10/19	62.2	61.0 #	-	59.5	59.3	59.3	58.9	58.6	58.7	58.5	54.0	52.5	50.8	51.3	5943	785	6834	51.5	49.9	51.8
10/20	62.0	60.9 #	-	59.7	59.4	59.2	58.9	58.6	58.9	58.3	54.3	52.9	51.4	52.2	5438	726	6484	52.5	53.3	54.1
10/21	62.2	61.0 #	-	59.7	59.6	59.8	59.5	59.4	59.5	58.9	55.0	53.4	52.4	53.7	5239	754	6072	61.0	60.1	60.6
10/22	61.5	61.1 #	-	59.9	59.9	60.2	60.2	60.3	60.7	60.5	55.7	53.6	53.1	53.3	4399	796	6065	61.0	60.3	60.8
10/23	61.2	61.1 #	-	60.0	59.8	59.7	59.5	59.5	59.8	59.9	54.8	53.5	52.2	53.0	4520	760	6049	55.0	55.2	55.7
10/24	60.8	60.6 #	-	59.7	59.0	58.9	57.8	57.9	58.2	58.0	55.0	53.7	51.7	51.5	4810	599	6010	56.0	56.3	55.8
10/25	60.8	? 60.7 #	-	59.4	59.4	59.7	58.3	57.5	57.6	57.3	54.9	53.7	51.4	51.3	4599	830	6014	56.5	54.9	57.0
10/26	60.5	? 60.3 #	-	59.3	59.1	59.0	58.4	57.9	58.2	57.8	54.4	53.8	51.9	51.8	4851	690	6061	54.5	55.1	56.3
10/27	60.4	60.1 #	-	59.5	59.6	59.9	59.5	59.0	59.1	58.5	55.5	54.1	53.2	52.4	4878	591	5861	61.0	58.2	60.5
10/28	60.0	? 59.9 #	-	59.4	59.6	60.1	60.0	59.8	60.1	60.1	55.7	54.3	54.1	53.6	5385	364	5632	65.0	58.8	61.3
10/29	59.9	59.6 #	-	59.6	59.7	60.0	60.1	60.1	60.4	60.4	55.5	54.5	54.4	54.2	4798	396	5422	61.5	58.4	60.9
10/30	59.7	59.5 #	-	59.2	59.4	59.8	60.3	60.5	60.9	60.8	55.5	54.5	54.8	55.0	4796	451	5203	60.5	60.5	61.2
10/31	59.6	59.3 #	-	59.1	59.1	59.4	59.5	59.6	60.0	60.4	54.9	54.4	54.2	54.4	4432	399	5040	58.0	56.8	56.2
Oct	61.4	60.6	-	59.2	59.2	59.4	59.4	59.4	59.7	59.6	55.0	52.9	52.7	54.0	4926	1179	6453	61.3	58.5	60.4
															Total CFS	152706	36535	200036		
															Total AF	302886	72466	396763		

**Legend**

- ? = 1-9 hours of data missing (Average includes estimations)
- ! = 10 or more hours of data missing (Average not calculated)
- # = Station out of service
- ↑ = Record high air temperature
- ↓ = Record low air temperature
- ☐ = Monthly Averages

**Notes**

- <sup>1</sup> Temperatures are weighted averages based on individual penstock flow and temperature
- Highlighted cells in the TCD column indicate a TCD change was made on that day
- <sup>2</sup> Current Sacramento River control point (see page 4 for more details)

D A T E	Redding (RDD) Daily Air Temperatures (°F)																																			
	Actual			Forecasted																																
	Previous Day			Current Day			1 Day			2 Days			3 Days			4 Days			5 Days			6 Days			7 Days			8 Days			9 Days			10 Days		
	↓	↑	Avg	↓	↑	Avg	↓	↑	Avg	↓	↑	Avg	↓	↑	Avg	↓	↑	Avg	↓	↑	Avg	↓	↑	Avg	↓	↑	Avg	↓	↑	Avg	↓	↑	Avg	↓	↑	Avg
10/01	52	94	73.0	54	91	72.5	53	92	72.5	54	92	73.0	54	89	71.5	52	83	67.5	50	76	63.0	48	73	60.5	51	72	61.5	49	73	61.0	49	77	63.0	49	80	64.5
10/02	51	90	70.5	52	93	72.5	54	92	73.0	55	88	71.5	53	81	67.0	49	72	60.5	48	70	59.0	44	66	55.0	52	80	66.0	47	80	63.5	48	79	63.5	50	75	62.5
10/03	51	96	73.5	54	93	73.5	54	89	71.5	53	81	67.0	49	71	60.0	51	68	59.5	46	65	55.5	43	73	58.0	48	81	64.5	48	78	63.0	46	75	60.5	45	76	60.5
10/04	53	93	73.0	55	89	72.0	52	80	66.0	49	69	59.0	49	72	60.5	43	70	56.5	43	74	58.5	45	78	61.5	52	74	63.0	44	74	59.0	44	72	58.0	45	71	58.0
10/05	53	90	71.5	53	81	67.0	49	71	60.0	48	72	60.0	43	69	56.0	44	75	59.5	46	80	63.0	46	68	57.0	49	73	61.0	46	69	57.5	47	77	62.0	50	77	63.5
10/06	52	83	67.5	60	73	66.5	48	72	60.0	45	69	57.0	43	74	58.5	45	78	61.5	44	69	56.5	39	68	53.5	45	76	60.5	48	77	62.5	45	77	61.0	48	77	62.5
10/07	58	76	67.0	52	72	62.0	44	67	55.5	43	74	58.5	44	78	61.0	41	65	53.0	38	68	53.0	40	71	55.5	46	78	62.0	49	80	64.5	47	79	63.0	44	80	62.0
10/08	51	74	62.5	44	69	56.5	41	73	57.0	43	79	61.0	42	65	53.5	39	69	54.0	38	69	53.5	40	76	58.0	51	85	68.0	48	78	63.0	43	76	59.5	48	76	62.0
10/09	43	69	56.0	50	74	62.0	44	79	61.5	40	65	52.5	38	69	53.5	39	71	55.0	42	77	59.5	44	81	62.5	48	85	66.5	46	78	62.0	46	76	61.0	47	74	60.5
10/10	50	79	64.5	46	80	63.0	42	64	53.0	37	68	52.5	41	68	54.5	41	76	58.5	42	81	61.5	45	81	63.0	49	86	67.5	47	80	63.5	46	81	63.5	47	78	62.5
10/11	44	84	64.0	52	67	59.5	43	70	56.5	42	72	57.0	41	75	58.0	46	79	62.5	47	82	64.5	49	80	64.5	50	87	68.5	48	80	64.0	45	75	60.0	46	71	58.5
10/12	50	67	58.5	49	71	60.0	45	69	57.0	45	75	60.0	46	80	63.0	43	81	62.0	45	81	63.0	44	81	62.5	49	82	65.5	48	70	59.0	51	73	62.0	48	76	62.0
10/13	48	71	59.5	51	70	60.5	44	75	59.5	42	80	61.0	44	83	63.5	45	77	61.0	43	73	58.0	42	72	57.0	49	78	63.5	45	78	61.5	47	79	63.0	46	78	62.0
10/14	51	71	61.0	56	77	66.5	42	81	61.5	45	84	64.5	45	73	59.0	41	66	53.5	40	71	55.5	44	67	55.5	49	86	67.5	49	79	64.0	48	75	61.5	46	72	59.0
10/15	52	77	64.5	44	81	62.5	44	84	64.0	45	72	58.5	39	63	51.0	38	66	52.0	44	61	52.5	47	68	57.5	52	84	68.0	50	80	65.0	49	75	62.0	47	73	60.0
10/16	44	81	62.5	42	85	63.5	43	71	57.0	36	61	48.5	37	66	51.5	43	57	50.0	47	69	58.0	49	69	59.0	53	70	61.5	54	64	59.0	49	71	60.0	46	68	57.0
10/17	41	83	62.0	44	72	58.0	38	59	48.5	36	64	50.0	43	55	49.0	46	61	53.5	51	64	57.5	47	59	53.0	47	63	55.0	52	61	56.5	44	66	55.0	44	71	57.5
10/18	42	73	57.5	49	60	54.5	37	61	49.0	43	55	49.0	47	60	53.5	51	64	57.5	47	59	53.0	46	59	52.5	48	64	56.0	52	63	57.5	44	65	54.5	44	64	54.0
10/19	44	60	52.0	39	63	51.0	44	57	50.5	48	60	54.0	50	62	56.0	47	56	51.5	46	57	51.5	45	58	51.5	49	63	56.0	46	70	58.0	48	69	58.5	48	67	57.5
10/20	39	64	51.5	47	57	52.0	47	62	54.5	48	63	55.5	44	54	49.0	46	56	51.0	47	57	52.0	42	57	49.5	47	71	59.0	52	74	63.0	50	70	60.0	46	72	59.0
10/21	50	55	52.5	55	63	59.0	50	64	57.0	47	56	51.5	47	57	52.0	44	56	50.0	43	56	49.5	46	61	53.5	47	76	61.5	53	76	64.5	51	72	61.5	49	65	57.0
10/22	55	67	61.0	56	64	60.0	47	57	52.0	48	56	52.0	43	55	49.0	42	52	47.0	44	63	53.5	43	70	56.5	52	70	61.0	52	73	62.5	53	70	61.5	50	68	59.0
10/23	54	68	61.0	53	55	54.0	46	57	51.5	43	57	50.0	42	54	48.0	45	66	55.5	44	71	57.5	45	69	57.0	52	73	62.5	45	72	58.5	44	73	58.5	46	71	58.5
10/24	52	58	55.0	54	58	56.0	45	58	51.5	43	55	49.0	45	66	55.5	45	74	59.5	46	69	57.5	46	68	57.0	48	77	62.5	48	75	61.5	48	72	60.0	48	68	58.0
10/25	54	58	56.0	47	59	53.0	44	56	50.0	46	66	56.0	45	74	59.5	46	71	58.5	46	67	56.5	46	66	56.0	49	70	59.5	46	71	58.5	48	70	59.0	51	71	61.0
10/26	48	65	56.5	53	56	54.5	51	66	58.5	51	75	63.0	49	71	60.0	50	65	57.5	46	66	56.0	44	63	53.5	47	71	59.0	50	66	58.0	46	64	55.0	43	67	55.0
10/27	53	56	54.5	54	67	60.5	47	76	61.5	48	73	60.5	49	67	58.0	45	65	55.0	45	60	52.5	46	64	55.0	50	69	59.5	52	69	60.5	46	62	54.0	44	61	52.5
10/28	54	68	61.0	53	75	64.0	47	71	59.0	48	66	57.0	46	64	55.0	46	59	52.5	46	64	55.0	45	62	53.5	45	68	56.5	47	66	56.5	42	65	53.5	41	66	53.5
10/29	51	79	65.0	50	73	61.5	50	64	57.0	46	63	54.5	47	57	52.0	49	63	56.0	46	61	53.5	47	62	54.5	45	64	54.5	44	66	55.0	44	70	57.0	47	71	59.0
10/30	49	74	61.5	59	66	62.5	47	63	55.0	45	58	51.5	48	65	56.5	43	64	53.5	47	64	55.5	43	65	54.0	46	72	59.0	42	70	56.0	44	66	55.0	46	67	56.5
10/31	54	67	60.5	51	64	57.5	48	58	53.0	48	65	56.5	44	67	55.5	49	63	56.0	44	63	53.5	42	64	53.0	47	75	61.0	48	70	59.0	47	68	57.5	45	62	53.5

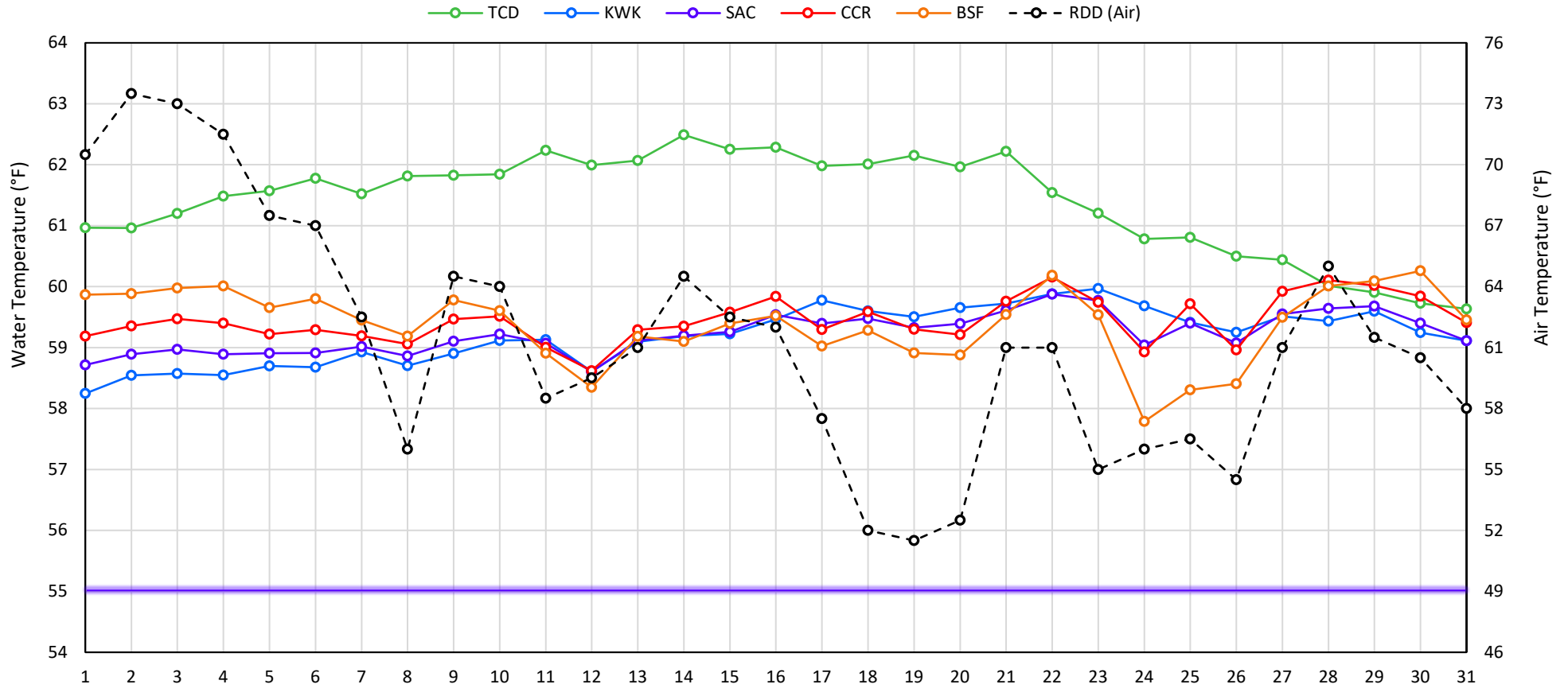
Web Links

- [10-Day Min/Max Forecast](#)
- [Previous Days Min/Max Actuals](#)

Legend

- NR = Forecasted temperatures not recorded
- 100** = Previous day actual temperatures in red and bolded indicate a record temperature for that date

## Mean Daily Temperatures



### Station Details

Code	Body of Water	Location <sup>1</sup>	CDEC Link
TCD	N/A	Shasta Power Plant	N/A
SHD	Sacramento River	0.3 miles downstream of Shasta Power Plant	<a href="#">Click Here</a>
SPP	N/A	Spring Creek Power Plant	N/A
KWK	Sacramento River	0.8 miles downstream of Keswick Dam	<a href="#">Click Here</a>
SAC	Sacramento River	4.8 miles downstream of Keswick Dam	<a href="#">Click Here</a>
CCR	Sacramento River	9.7 miles downstream of Keswick Dam	<a href="#">Click Here</a>
BSF	Sacramento River	25 miles downstream of Keswick Dam	<a href="#">Click Here</a>
JLF	Sacramento River	34 miles downstream of Keswick Dam	<a href="#">Click Here</a>
BND	Sacramento River	41 miles downstream of Keswick Dam	<a href="#">Click Here</a>
RDB	Sacramento River	58 miles downstream of Keswick Dam	<a href="#">Click Here</a>
IGO	Clear Creek	7.3 miles downstream of Whiskeytown Dam	<a href="#">Click Here</a>
LWS	Trinity River	1.1 miles downstream of Lewiston Dam	<a href="#">Click Here</a>
DGC	Trinity River	19 miles downstream of Lewiston Dam	<a href="#">Click Here</a>
NFH	Trinity River	38 miles downstream of Lewiston Dam	<a href="#">Click Here</a>

### Water Right Temperature Control Points

River	Point	Temp. (°F)	Begin Date	End Date
Sacramento	CCR	56	09/21/2020	04/18/2021
Sacramento	CCR	60	04/18/2021	05/17/2021
Sacramento	SAC	57	05/17/2021	06/15/2021
<b>Sacramento</b>	<b>SAC</b>	<b>55</b>	<b>06/15/2021</b>	<b>TBD</b>
Trinity	DGC	56	09/15/2021	10/01/2021
Trinity	NFH	56	10/01/2021	12/31/2021

### Notes

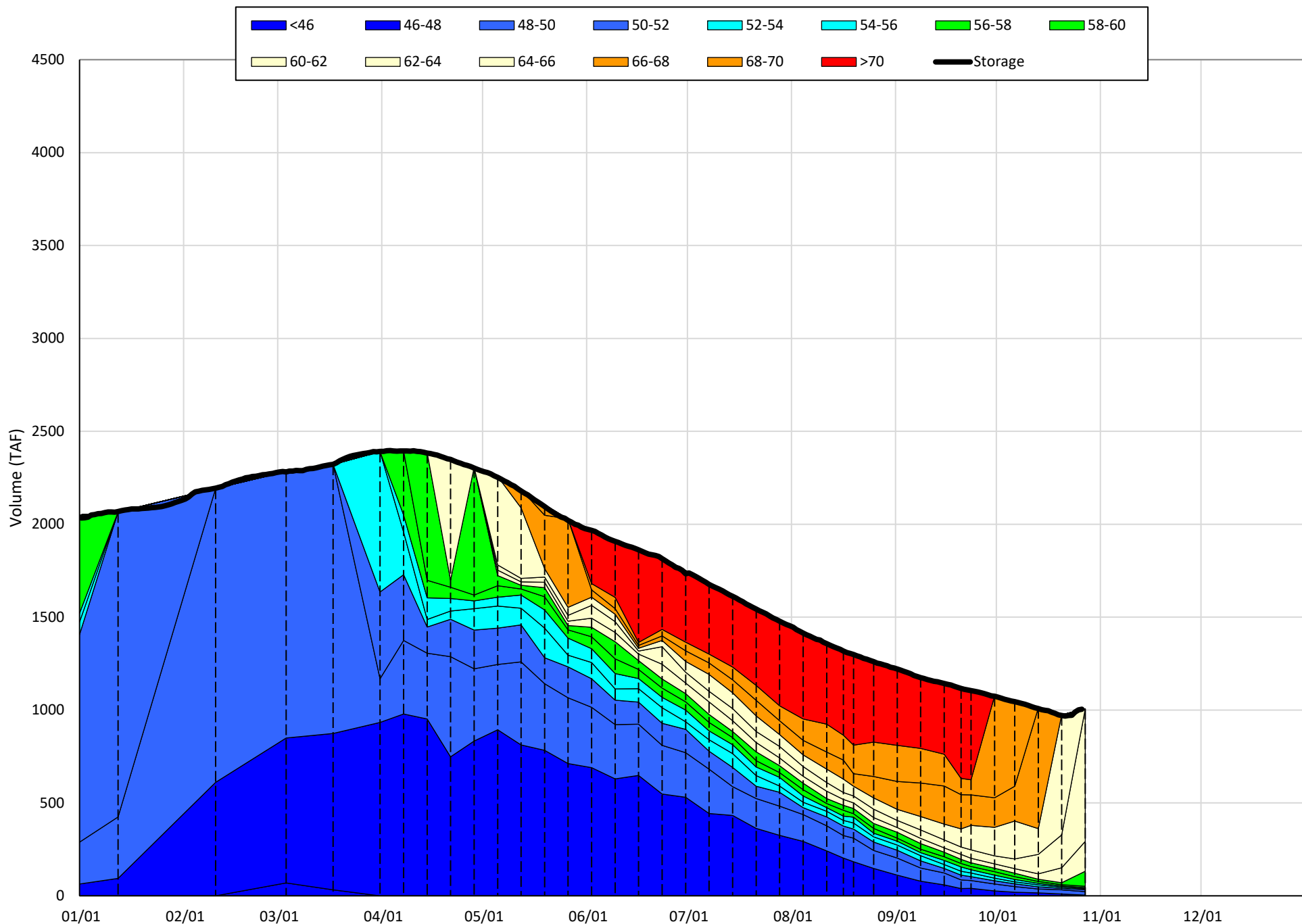
<sup>1</sup> Distances are approximate

# Shasta Lake Isothermobaths & Cold Water Pool Statistics

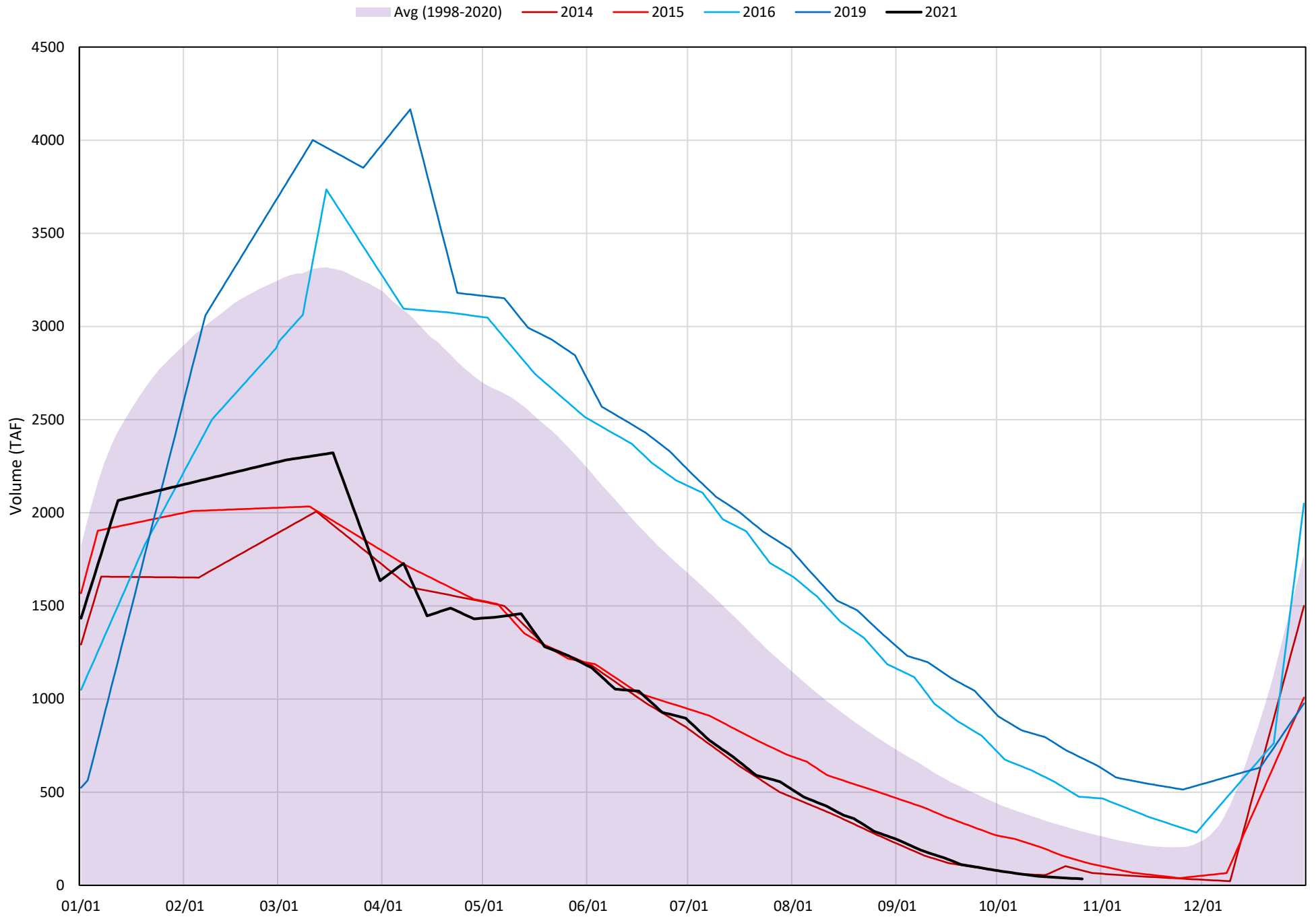
## 2021

Page	Description
6	- Shasta Lake Isothermobaths Plot
7	- Shasta Lake Cold Water Pool Volume $\leq 52^{\circ}\text{F}$
8	- Shasta Lake Cold Water Pool Volume $\leq 50^{\circ}\text{F}$
9	- Shasta Lake Cold Water Pool Volume $\leq 48^{\circ}\text{F}$
10	- Shasta Lake Cold Water Pool Volume $\leq 52^{\circ}\text{F}$ - Percent Exceedances
11	- Shasta Lake Cold Water Pool Volume $\leq 50^{\circ}\text{F}$ - Percent Exceedances
12	- Shasta Lake Cold Water Pool Volume $\leq 48^{\circ}\text{F}$ - Percent Exceedances
13	- Shasta Lake Cold Water Pool Comparison by Year

Shasta Lake Isothermobaths Plot - 2021

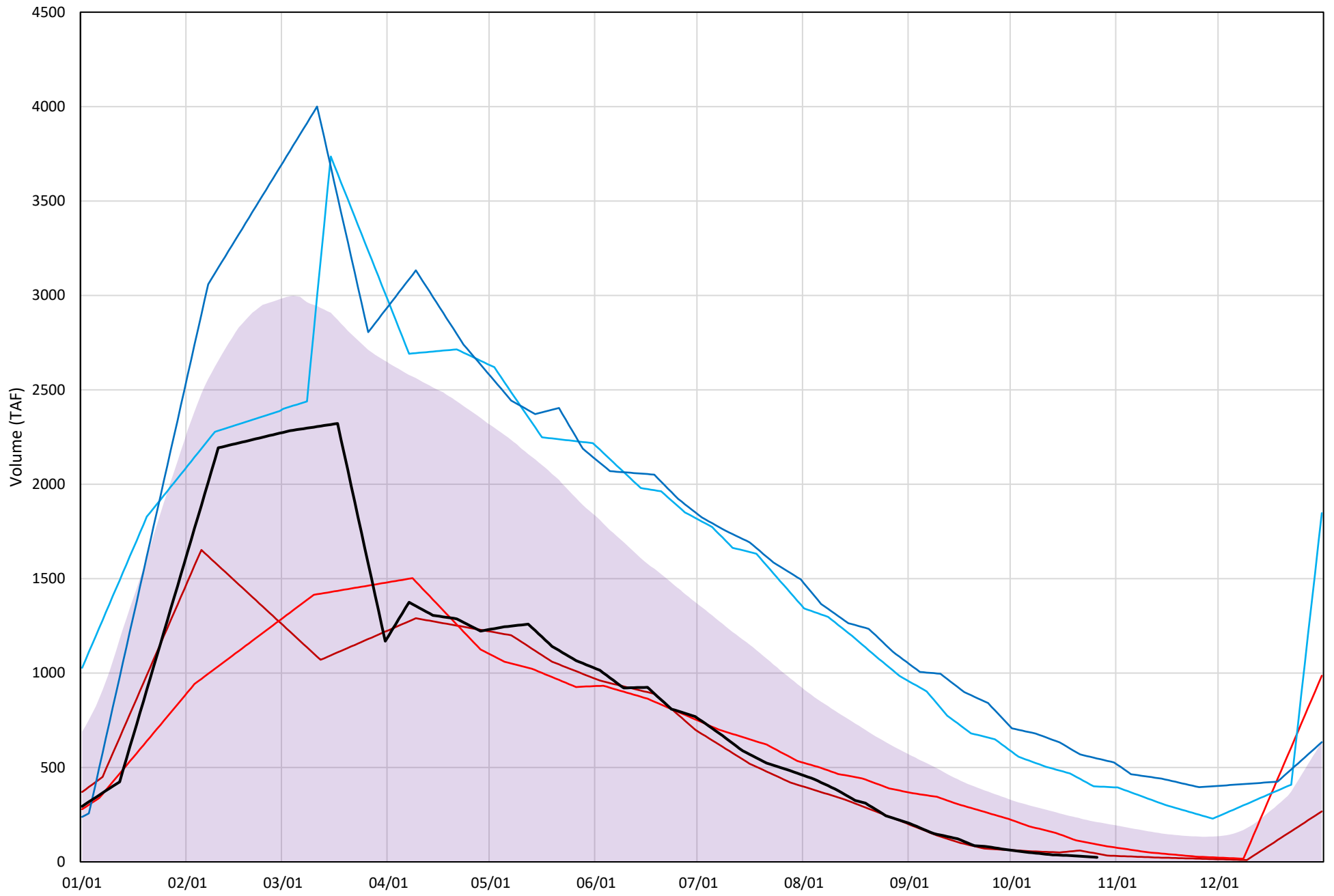


# Shasta Lake Cold Water Pool Volume $\leq 52^{\circ}\text{F}$



# Shasta Lake Cold Water Pool Volume $\leq 50^{\circ}\text{F}$

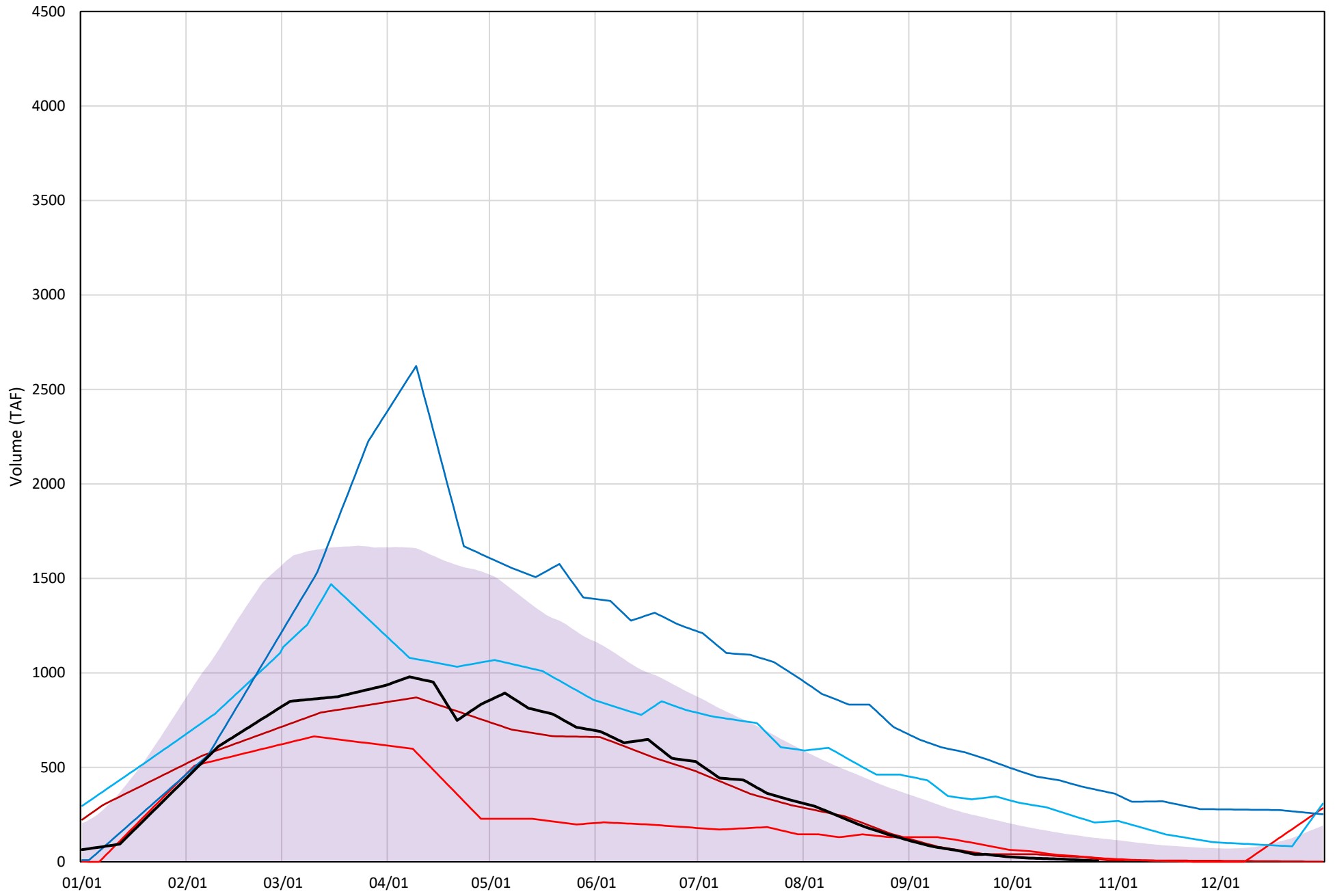
Avg (1998-2020) 2014 2015 2016 2019 2021



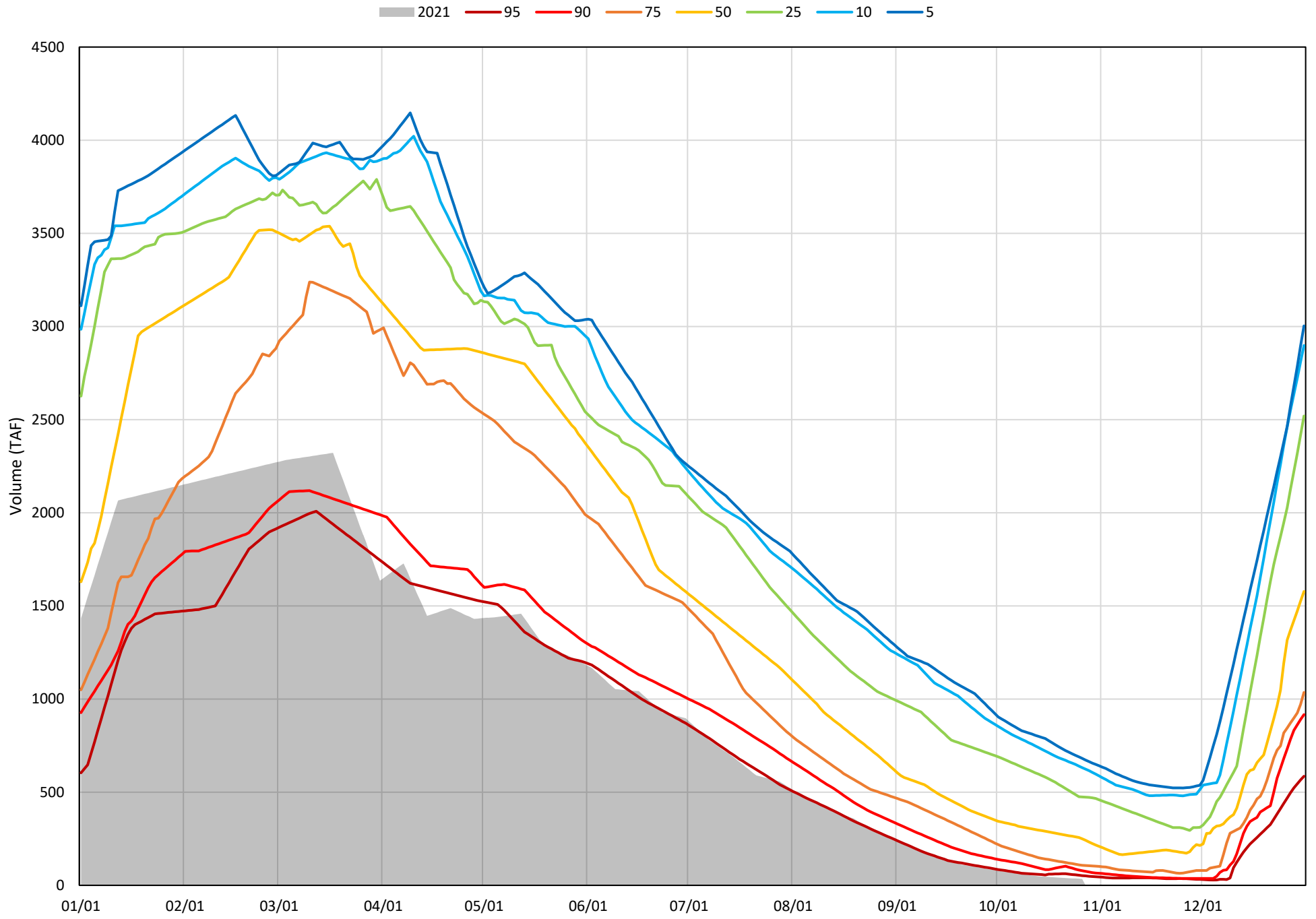


# Shasta Lake Cold Water Pool Volume $\leq 48^{\circ}\text{F}$

Avg (1998-2020) 2014 2015 2016 2019 2021

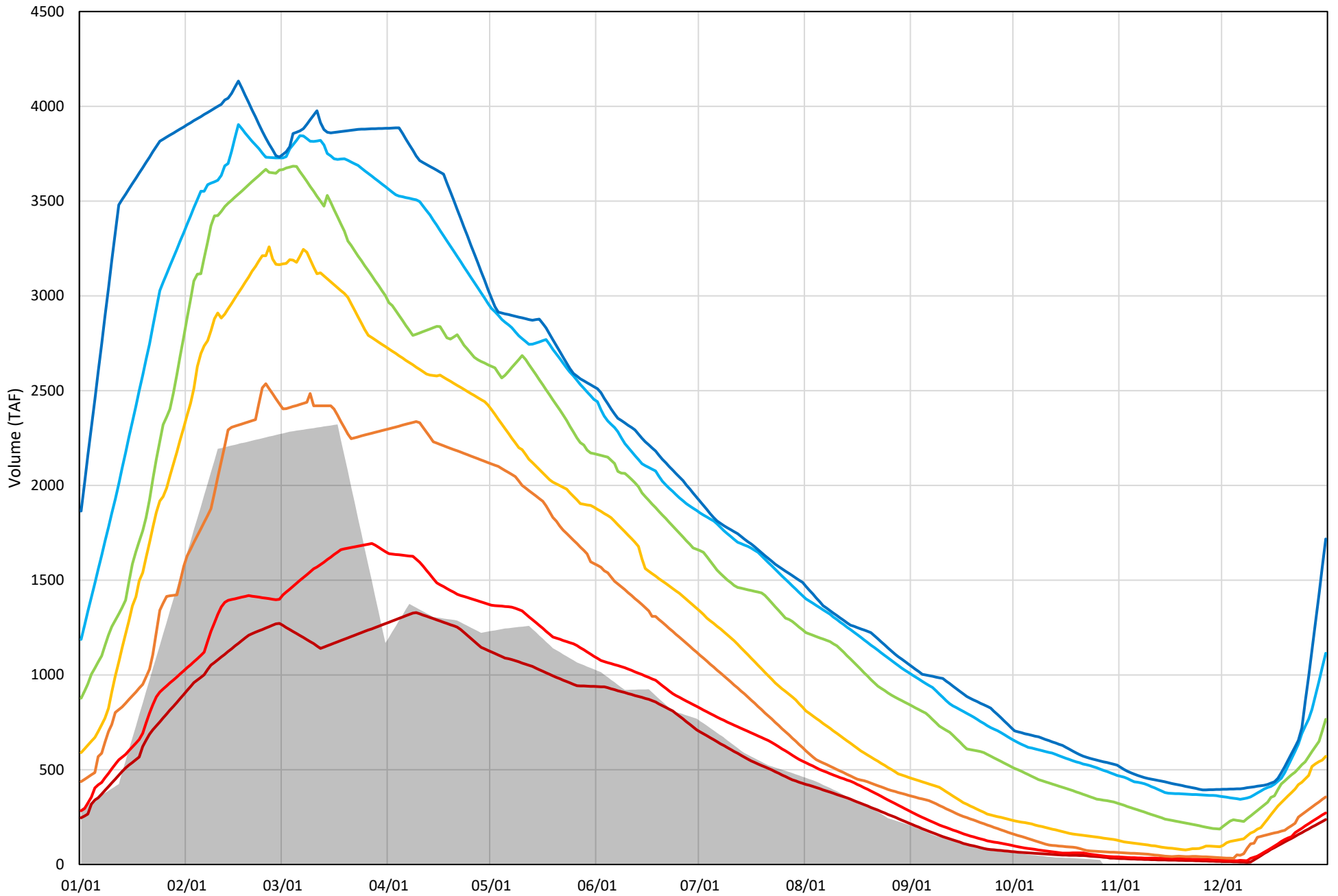


Shasta Lake Cold Water Pool Volume  $\leq 52^{\circ}\text{F}$  - Percent Exceedances (1998-2020)



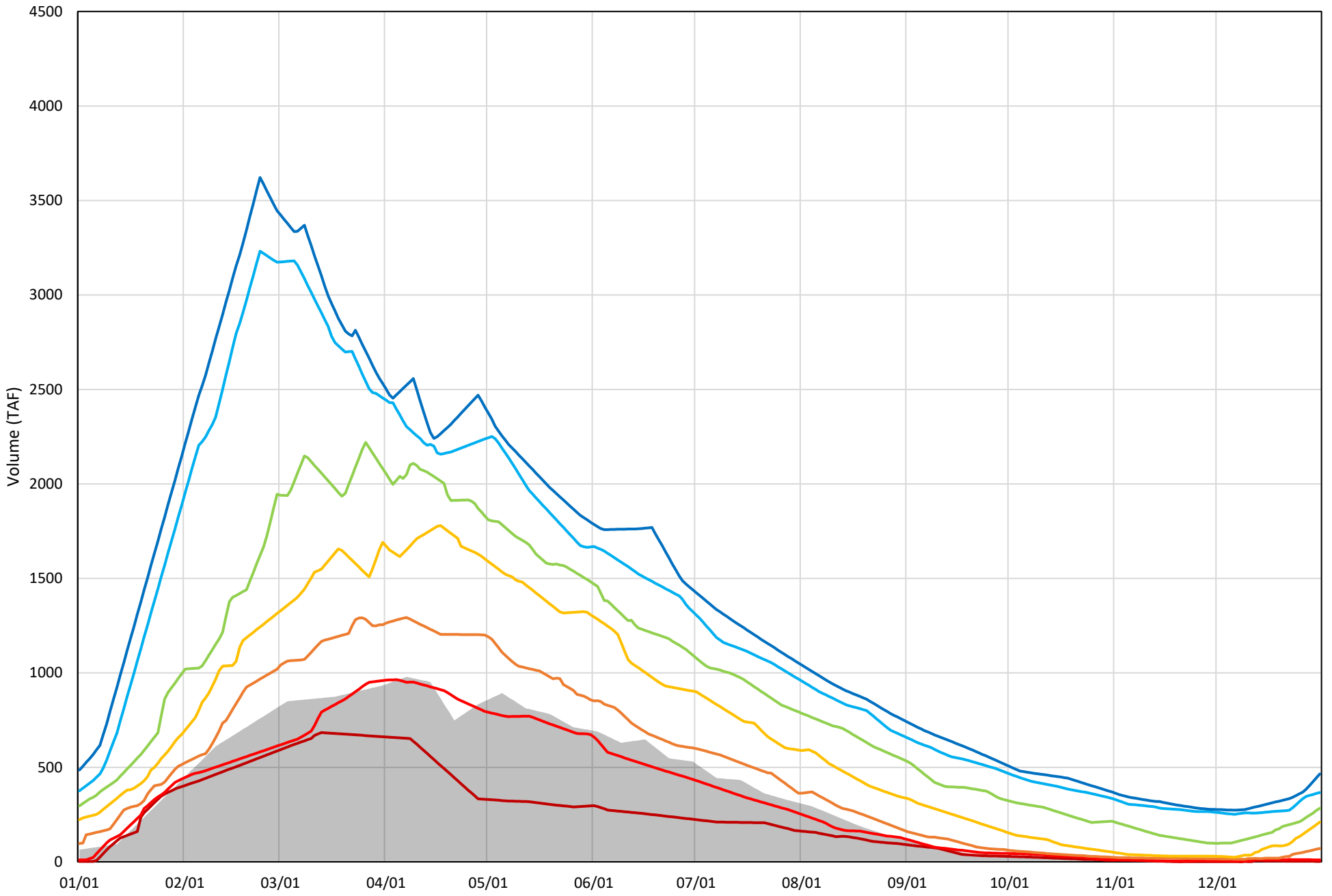
Shasta Lake Cold Water Pool Volume  $\leq 50^{\circ}\text{F}$  - Percent Exceedances (1998-2020)

2021 95 90 75 50 25 10 5



Shasta Lake Cold Water Pool Volume  $\leq 48^{\circ}\text{F}$  - Percent Exceedances (1998-2020)

2021 95 90 75 50 25 10 5



## Shasta Lake Cold Water Pool Comparison by Year (for Specified Date)

Oct-27 2021	$\Delta$ TAF				% $\Delta$			
	$\leq 52^\circ$	$\leq 50^\circ$	$\leq 48^\circ$	Abs. Avg.	$\leq 52^\circ$	$\leq 50^\circ$	$\leq 48^\circ$	Abs. Avg.
1998	114	29	6	50	332	119	125	192
1999	461	388	303	384	1343	1620	6217	3060
2000	220	118	34	124	641	492	692	608
2001	134	102	78	104	391	424	1591	802
2002	282	224	154	220	821	935	3161	1639
2003	293	111	20	141	853	465	402	574
2004	73	55	35	54	212	228	720	387
2005	74	40	24	46	214	167	484	289
2006	308	226	143	226	896	944	2934	1591
2007	44	35	34	38	127	145	705	326
2008	12	15	24	17	35	63	494	197
2009	57	44	44	48	165	186	893	414
2010	494	315	152	320	1438	1314	3115	1956
2011	642	518	397	519	1870	2164	8141	4058
2012	374	318	227	307	1089	1330	4662	2360
2013	147	127	99	124	428	532	2032	997
2014	45	19	10	25	131	81	199	137
2015	94	68	16	59	272	285	323	294
2016	440	375	204	340	1282	1568	4185	2345
2017	531	422	318	424	1546	1761	6525	3277
2018	215	147	60	141	627	613	1221	820
2019	648	524	375	516	1886	2189	7689	3921
2020	154	82	22	86	450	344	447	413
2021	0	0	0	0	0	0	0	0

}

Historic - Current

}

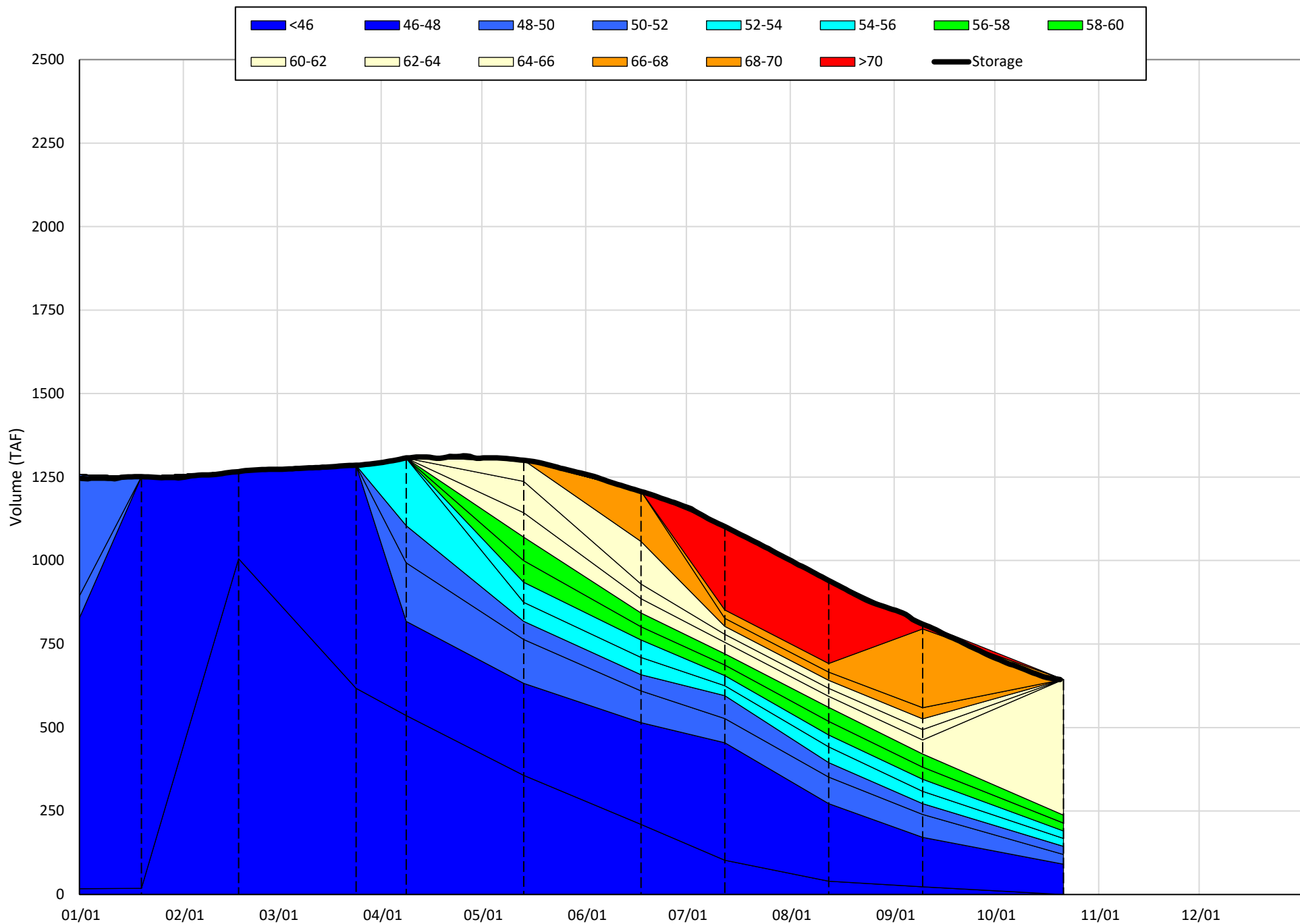
(Historic - Current) / Current

# Trinity Lake Isothermobaths & Cold Water Pool Statistics

## 2021

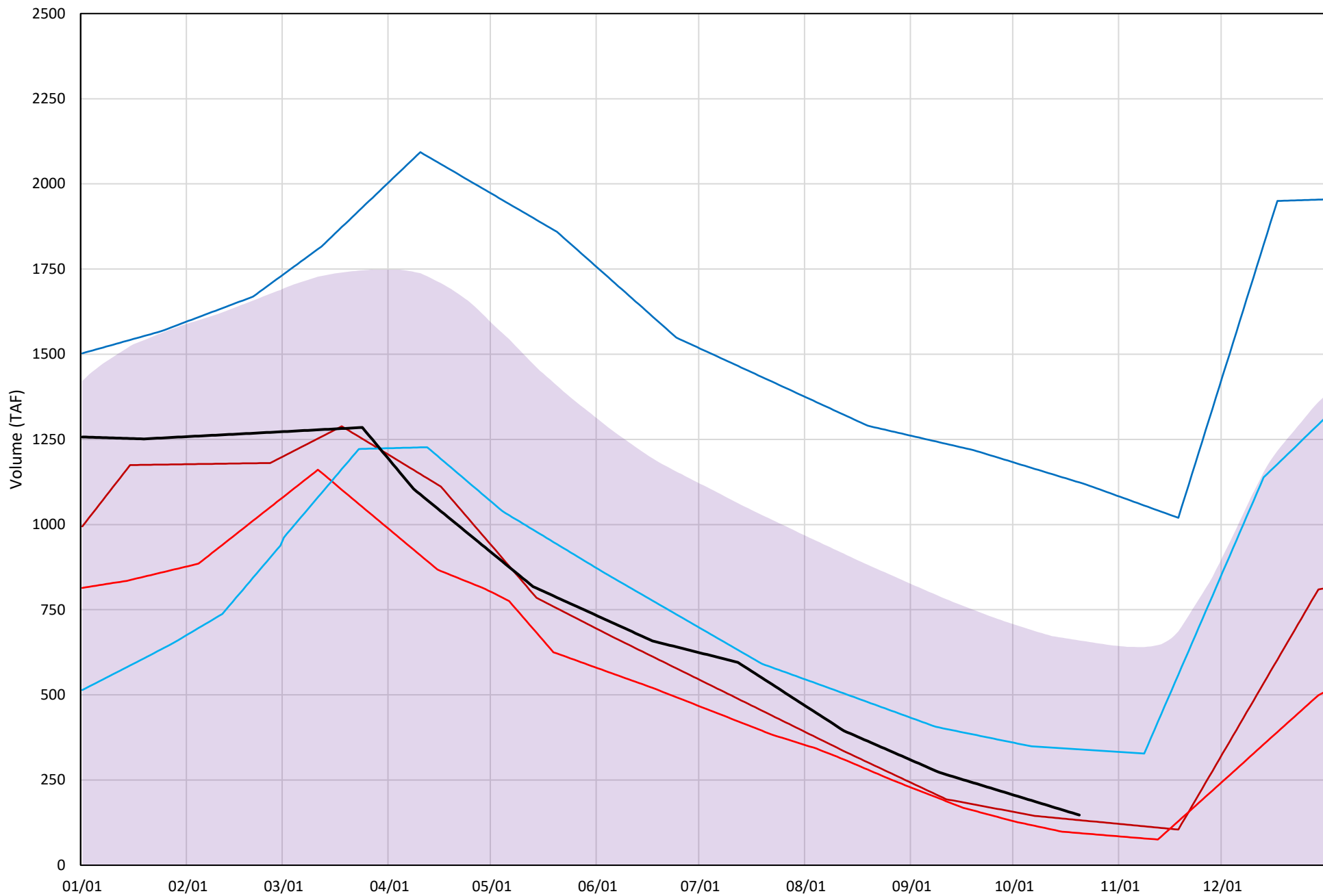
Page	Description
15	- Trinity Lake Isothermobaths Plot
16	- Trinity Lake Cold Water Pool Volume $\leq 52^{\circ}\text{F}$
17	- Trinity Lake Cold Water Pool Volume $\leq 50^{\circ}\text{F}$
18	- Trinity Lake Cold Water Pool Volume $\leq 48^{\circ}\text{F}$
19	- Trinity Lake Cold Water Pool Volume $\leq 52^{\circ}\text{F}$ - Percent Exceedances
20	- Trinity Lake Cold Water Pool Volume $\leq 50^{\circ}\text{F}$ - Percent Exceedances
21	- Trinity Lake Cold Water Pool Volume $\leq 48^{\circ}\text{F}$ - Percent Exceedances
22	- Trinity Lake Cold Water Pool Comparison by Year

Trinity Lake Isothermobaths Plot - 2021



# Trinity Lake Cold Water Pool Volume $\leq 52^{\circ}\text{F}$

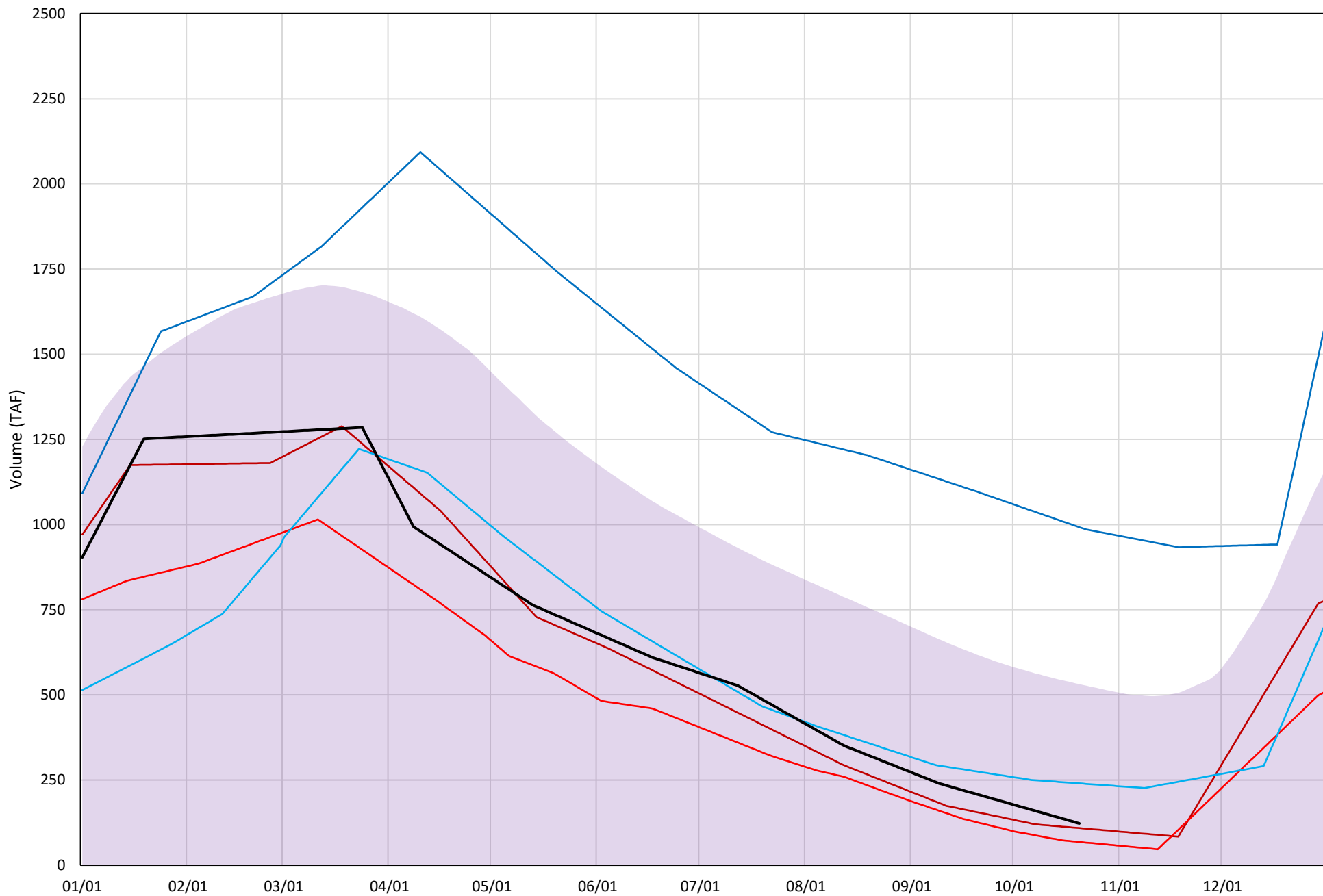
Avg (2000-2020) 2014 2015 2016 2019 2021





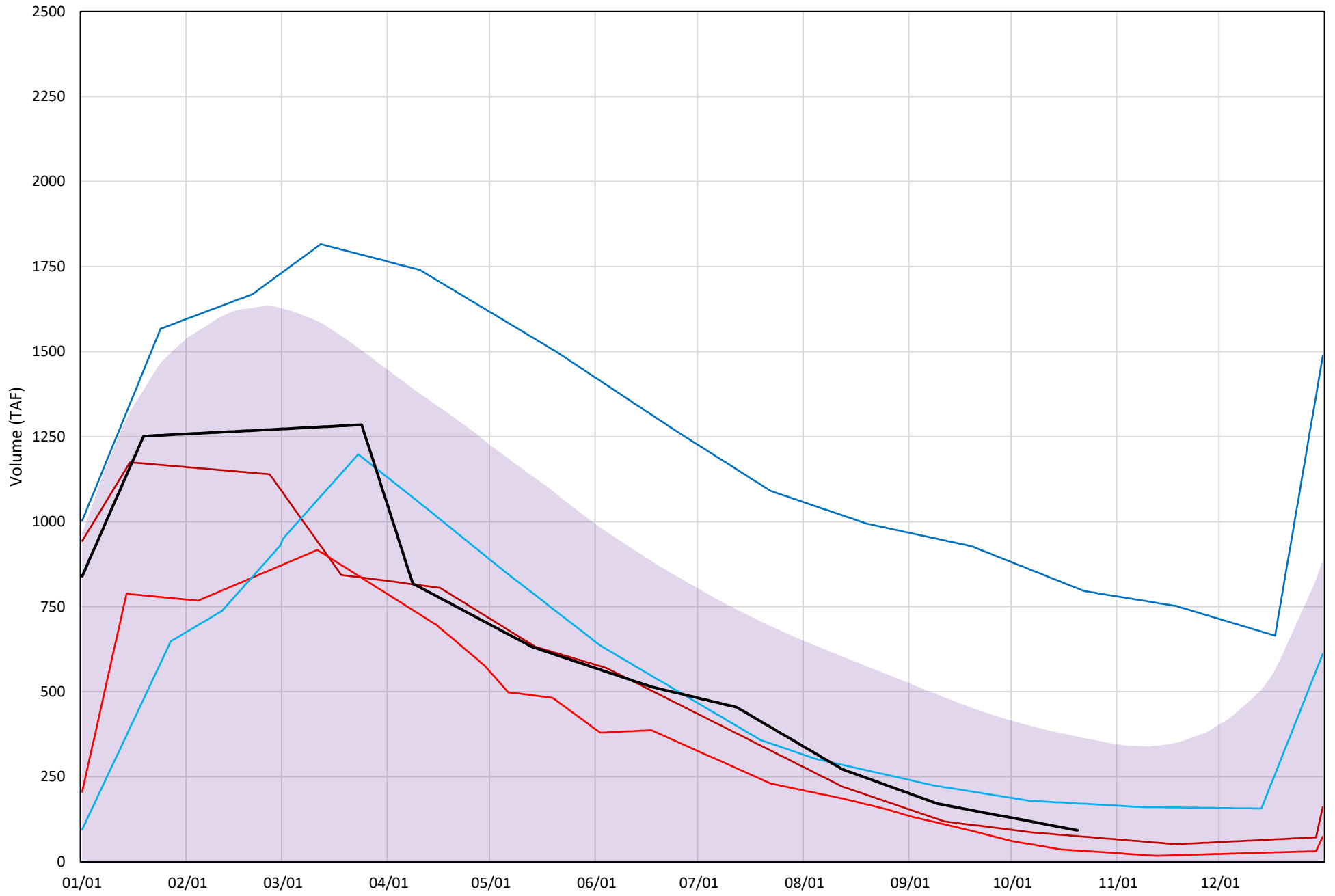
# Trinity Lake Cold Water Pool Volume $\leq 50^{\circ}\text{F}$

Avg (2000-2020) 2014 2015 2016 2019 2021

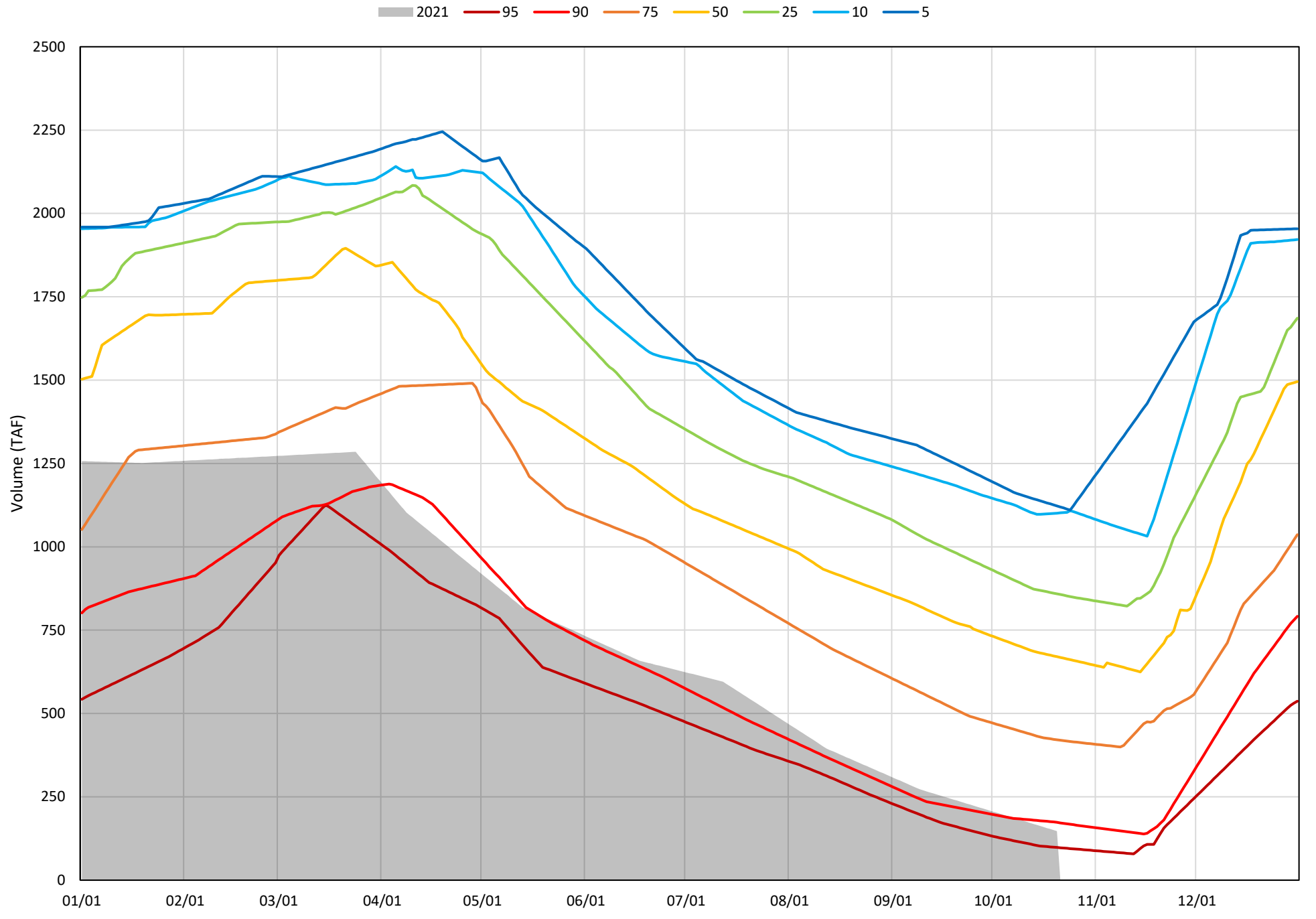


# Trinity Lake Cold Water Pool Volume $\leq 48^{\circ}\text{F}$

Avg (2000-2020) 2014 2015 2016 2019 2021

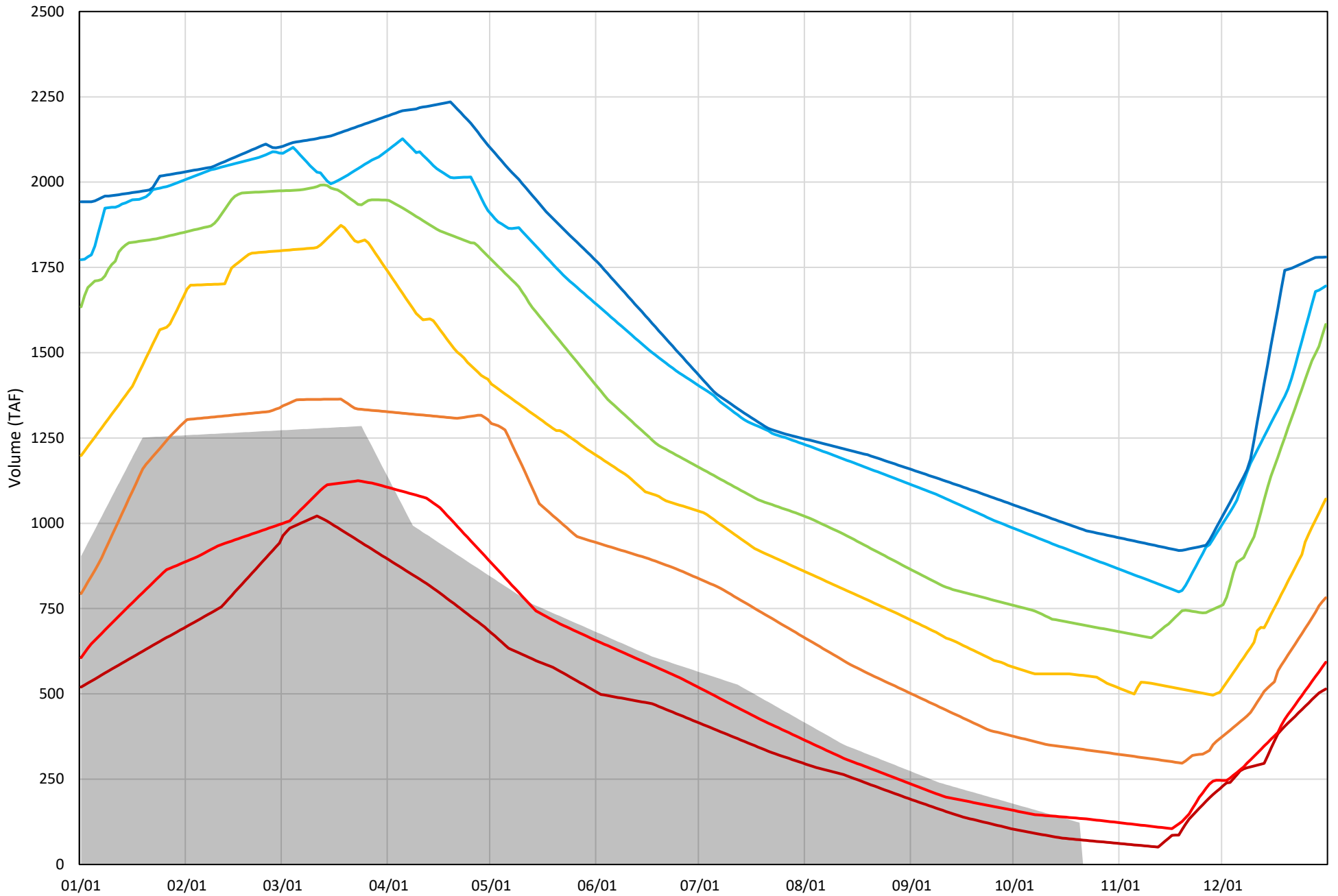


Trinity Lake Cold Water Pool Volume ≤52°F - Percent Exceedances (2000-2020)



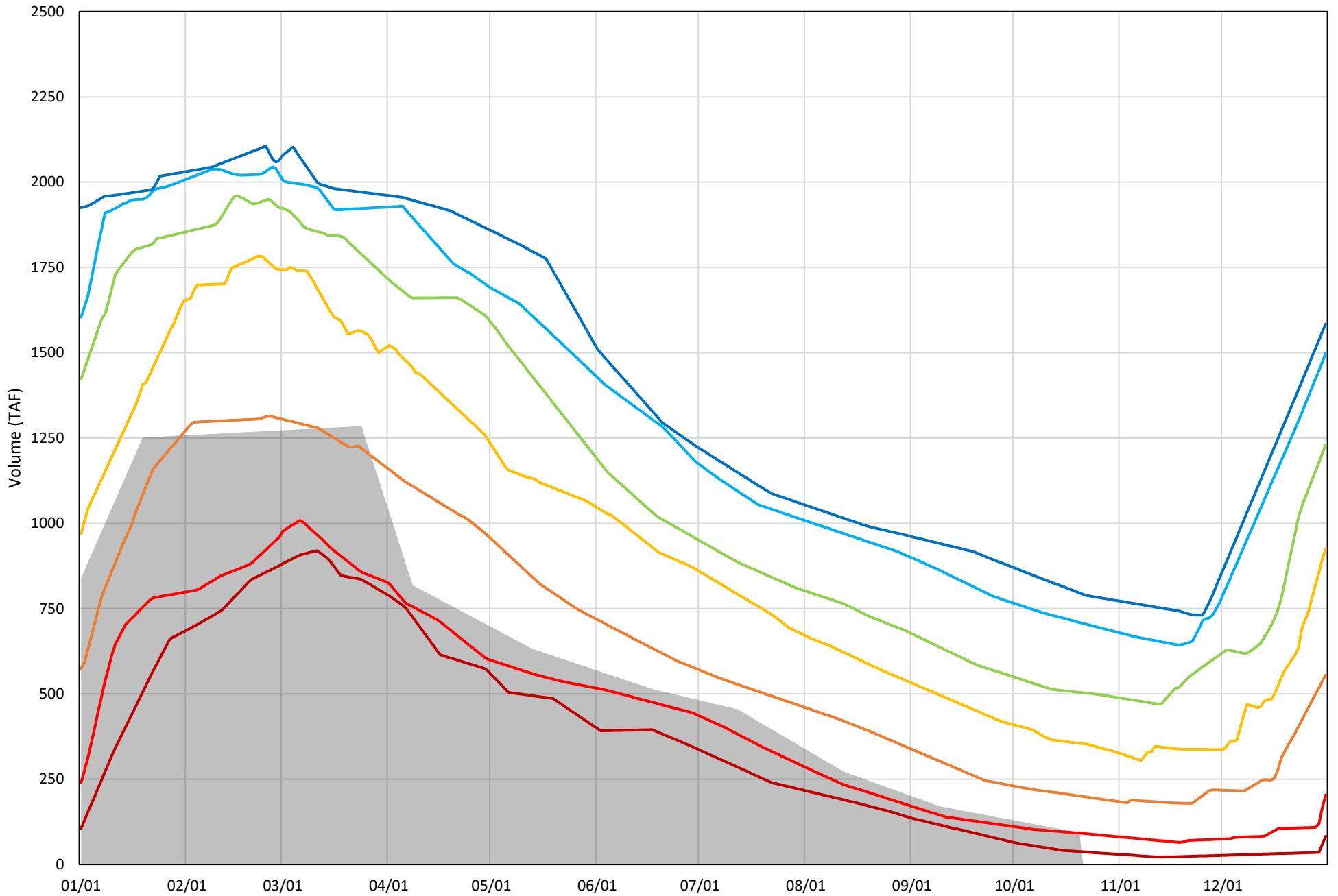
Trinity Lake Cold Water Pool Volume  $\leq 50^{\circ}\text{F}$  - Percent Exceedances (2000-2020)

2021 95 90 75 50 25 10 5



Trinity Lake Cold Water Pool Volume  $\leq 48^{\circ}\text{F}$  - Percent Exceedances (2000-2020)

2021 95 90 75 50 25 10 5



### Trinity Cold Water Pool Comparison by Year (for Specified Date)

Oct-21 2021	Δ TAF				% Δ			
	≤52°	≤50°	≤48°	Abs. Avg.	≤52°	≤50°	≤48°	Abs. Avg.
2000	606	436	238	427	411	355	257	341
2001	436	374	266	358	296	305	286	296
2002	465	394	306	388	315	321	330	322
2003	668	456	222	449	453	372	239	355
2004	437	327	174	313	297	266	187	250
2005	725	557	262	515	492	454	283	410
2006	900	605	421	642	611	493	454	519
2007	545	492	402	480	370	401	434	402
2008	190	122	65	126	129	100	70	99
2009	203	144	64	137	138	118	69	108
2010	523	362	137	341	355	295	148	266
2011	967	799	559	775	656	651	603	637
2012	792	740	631	721	538	603	681	607
2013	345	287	186	273	234	234	201	223
2014	-15	-14	-17	15	-10	-11	-18	13
2015	-53	-54	-59	56	-36	-44	-64	48
2016	193	118	79	130	131	96	85	104
2017	698	512	348	519	474	417	375	422
2018	688	628	510	609	467	512	550	510
2019	976	870	711	852	663	709	767	713
2020	476	432	281	396	323	352	303	326
2021	0	0	0	0	0	0	0	0

Historic - Current

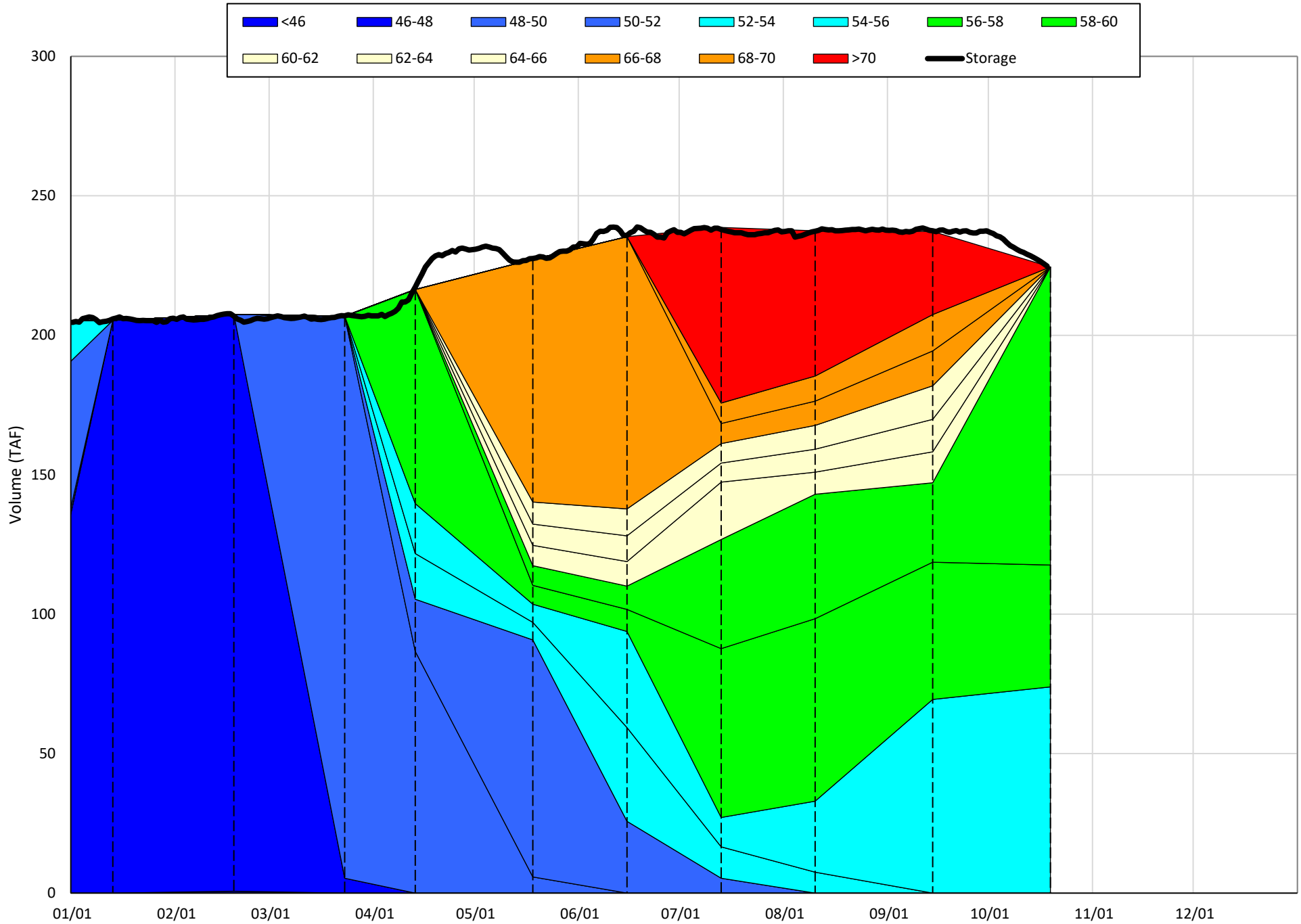
(Historic - Current) / Current

# Whiskeytown Lake Isothermobaths & Cold Water Pool Statistics

## 2021

Page	Description
24	- Whiskeytown Lake Isothermobaths Plot
25	- Whiskeytown Lake Cold Water Pool Volume $\leq 60^{\circ}\text{F}$
26	- Whiskeytown Lake Cold Water Pool Volume $\leq 58^{\circ}\text{F}$
27	- Whiskeytown Lake Cold Water Pool Volume $\leq 56^{\circ}\text{F}$
28	- Whiskeytown Lake Cold Water Pool Volume $\leq 60^{\circ}\text{F}$ - Percent Exceedances
29	- Whiskeytown Lake Cold Water Pool Volume $\leq 58^{\circ}\text{F}$ - Percent Exceedances
30	- Whiskeytown Lake Cold Water Pool Volume $\leq 56^{\circ}\text{F}$ - Percent Exceedances
31	- Whiskeytown Lake Cold Water Pool Comparison by Year

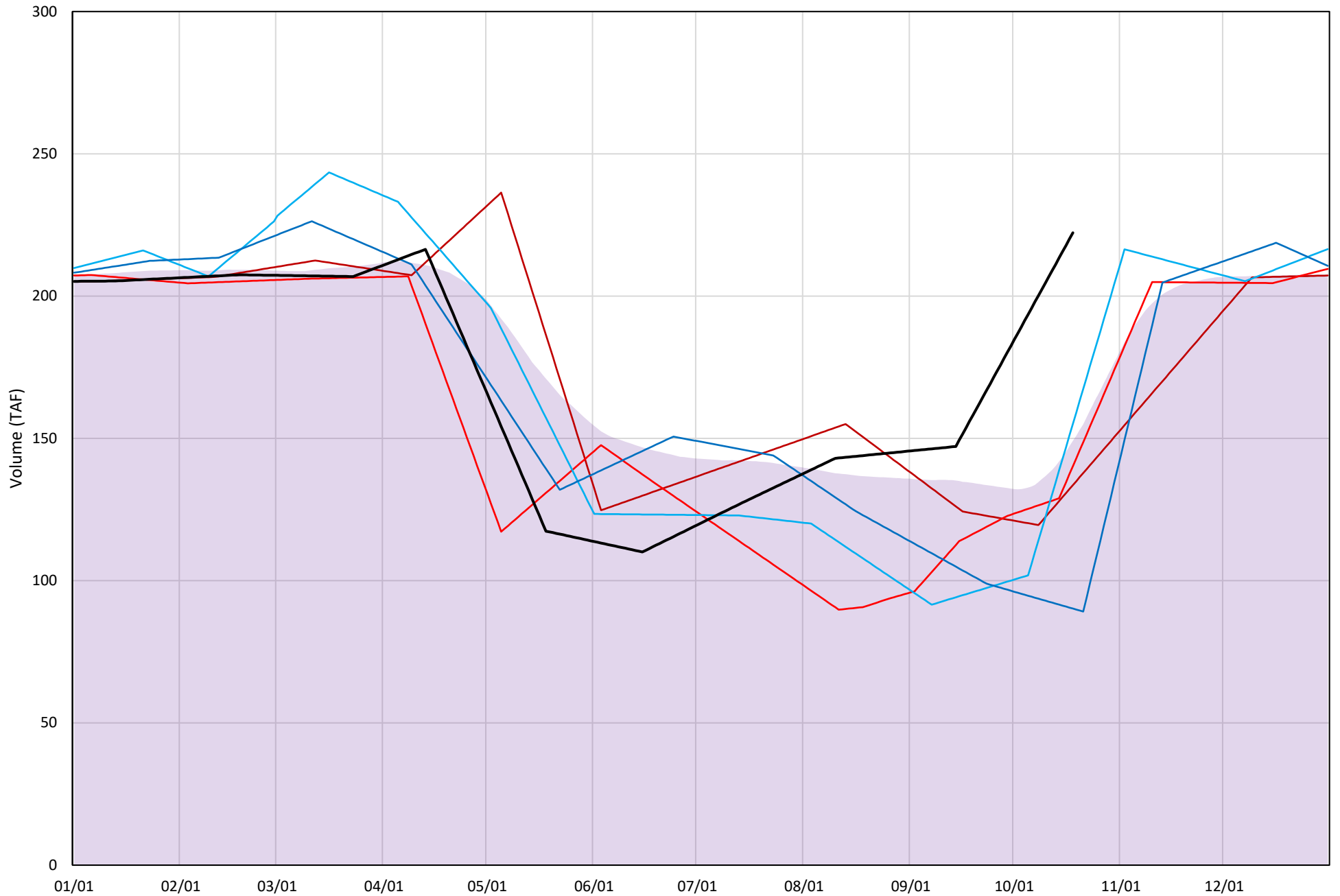
# Whiskeytown Lake Isothermobaths Plot - 2021





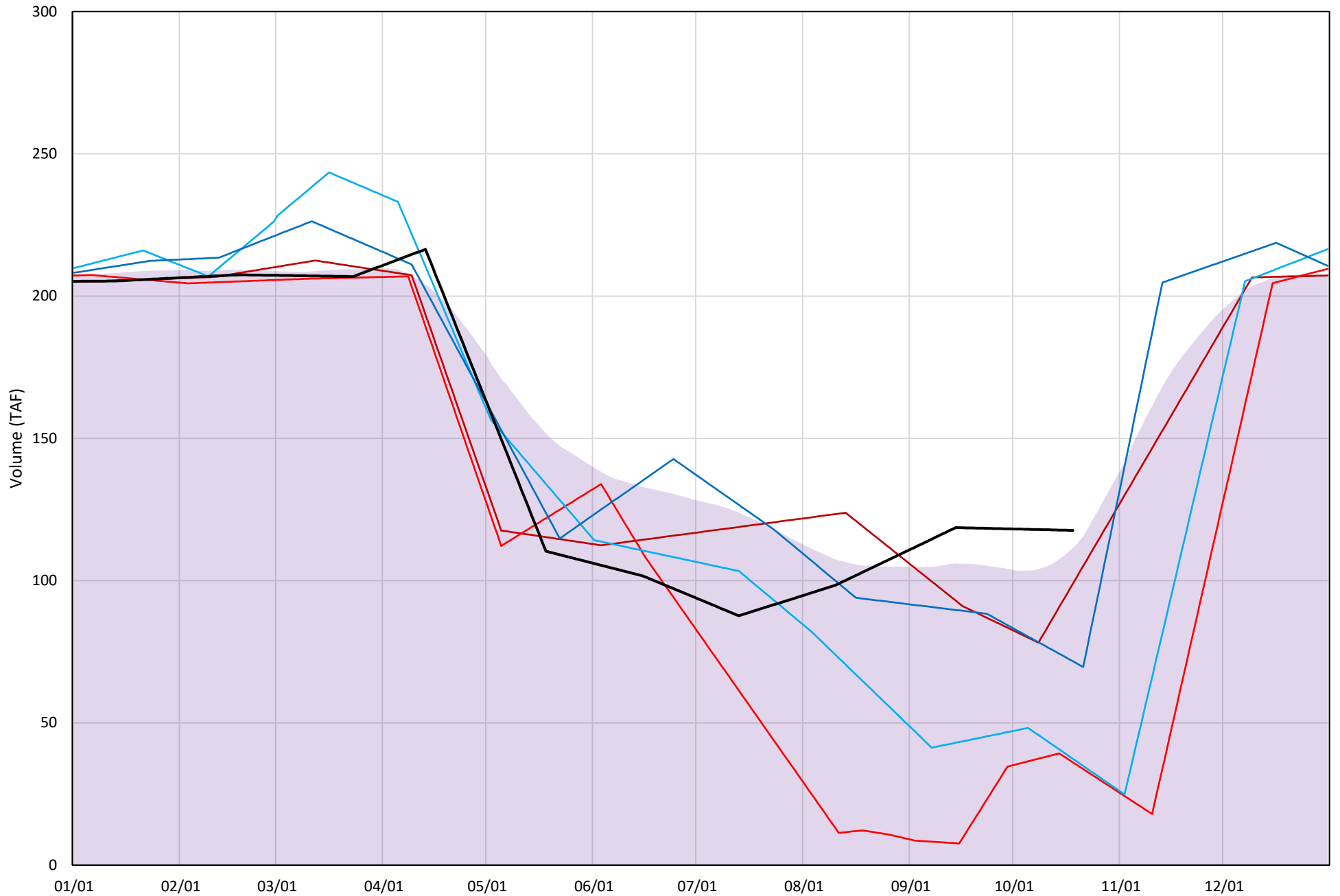
# Whiskeytown Lake Cold Water Pool Volume $\leq 60^{\circ}\text{F}$

Avg (2000-2020) 2014 2015 2016 2019 2021



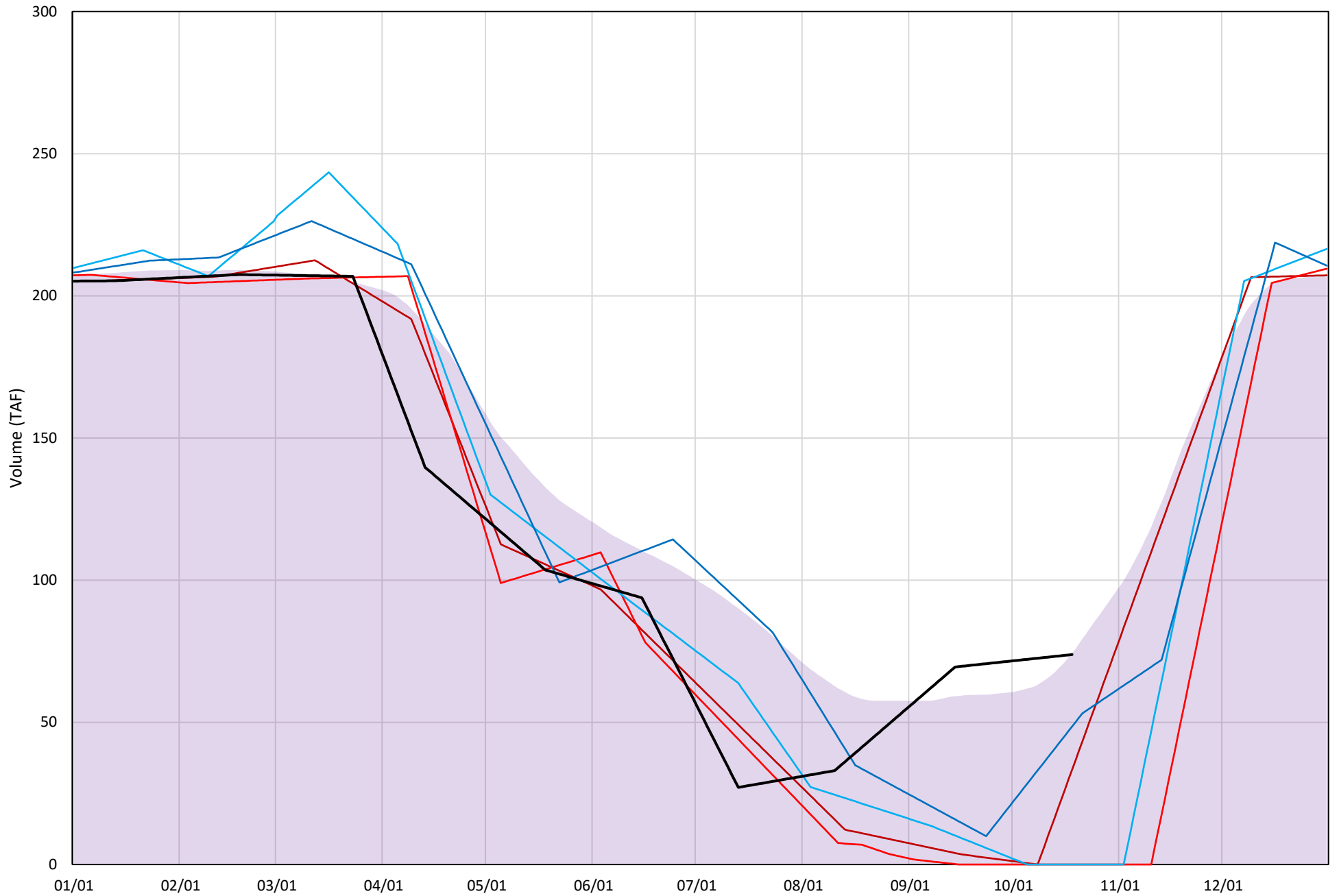
# Whiskeytown Lake Cold Water Pool Volume $\leq 58^{\circ}\text{F}$

Avg (2000-2020) 2014 2015 2016 2019 2021

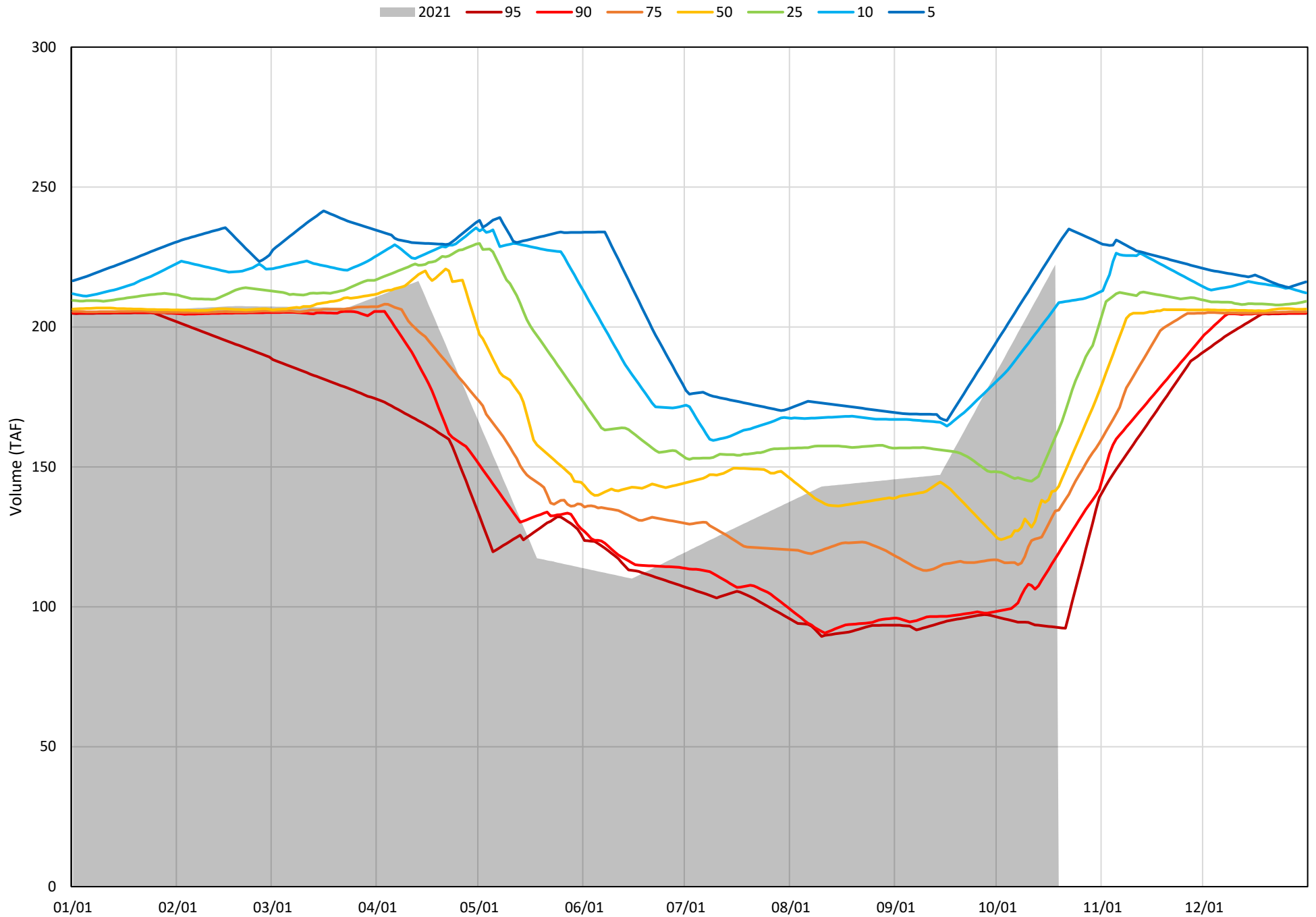


# Whiskeytown Lake Cold Water Pool Volume $\leq 56^{\circ}\text{F}$

Avg (2000-2020) 2014 2015 2016 2019 2021

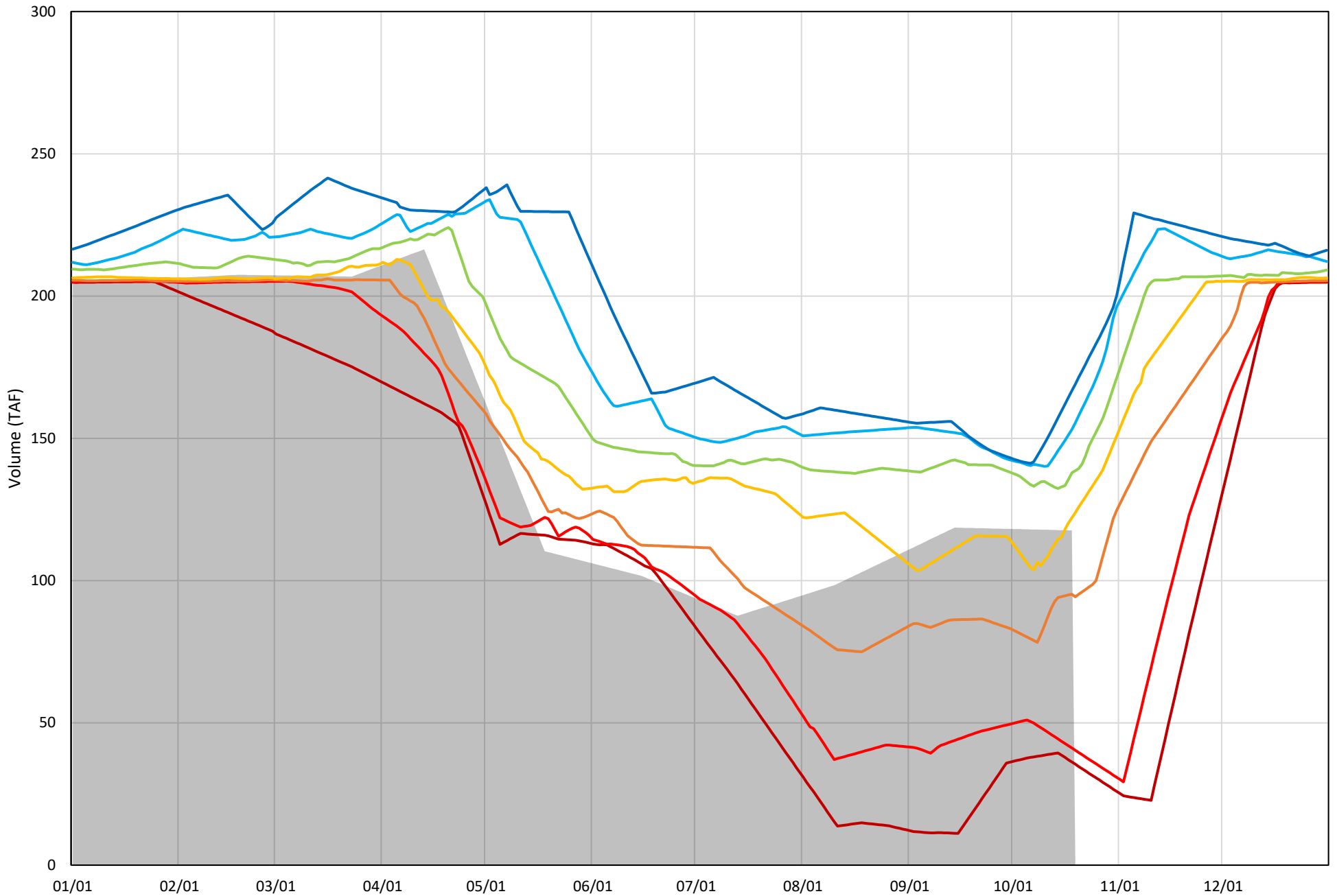


Whiskeytown Lake Cold Water Pool Volume  $\leq 60^{\circ}\text{F}$  - Percent Exceedances (2000-2020)



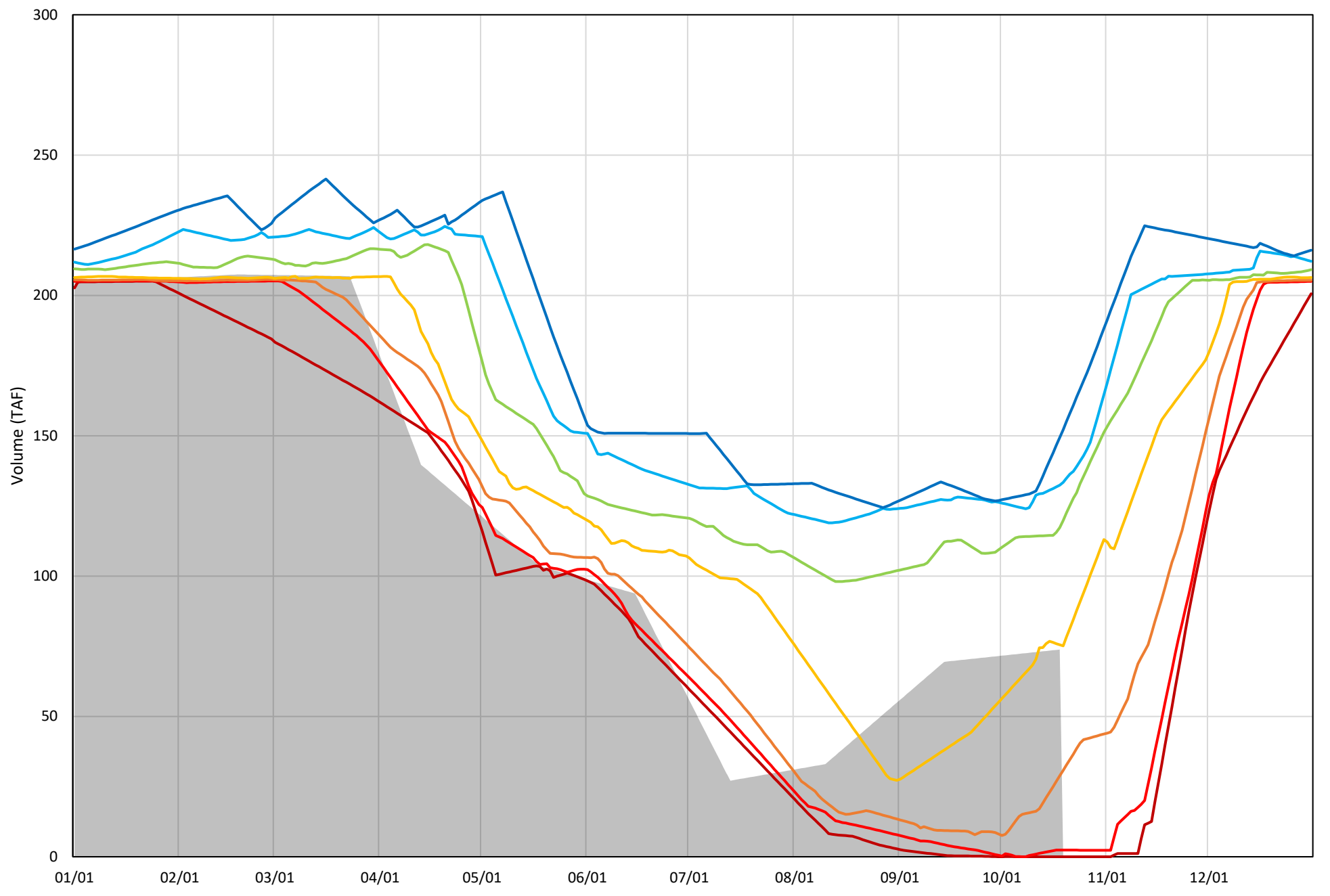
Whiskeytown Lake Cold Water Pool Volume  $\leq 58^{\circ}\text{F}$  - Percent Exceedances (2000-2020)

2021 95 90 75 50 25 10 5



Whiskeytown Lake Cold Water Pool Volume  $\leq 56^{\circ}\text{F}$  - Percent Exceedances (2000-2020)

2021 95 90 75 50 25 10 5



### Whiskeytown Cold Water Pool Comparison by Year (for Specified Date)

Oct-19 2021	$\Delta$ TAF				% $\Delta$			
	$\leq 60^\circ$	$\leq 58^\circ$	$\leq 56^\circ$	Abs. Avg.	$\leq 60^\circ$	$\leq 58^\circ$	$\leq 56^\circ$	Abs. Avg.
2000	-8	-6	-1	5	-6	-5	-1	4
2001	12	20	32	21	9	17	35	21
2002	24	27	30	27	19	24	33	25
2003	18	27	42	29	15	24	46	28
2004	50	55	61	55	40	49	67	52
2005	12	6	-66	28	9	5	-73	29
2006	16	25	41	27	13	22	46	27
2007	35	44	-16	32	29	39	-17	28
2008	5	11	24	14	4	10	27	14
2009	13	10	-34	19	11	9	-38	19
2010	39	-56	-77	57	32	-50	-85	56
2011	21	26	14	20	17	24	15	19
2012	49	-13	-36	33	40	-11	-40	30
2013	106	14	23	48	86	13	25	41
2014	10	-13	-57	27	8	-12	-63	28
2015	17	-76	-90	61	14	-68	-100	60
2016	32	-75	-90	66	26	-67	-100	64
2017	92	-21	-15	43	75	-19	-17	37
2018	31	18	-79	43	26	16	-87	43
2019	-33	-41	-42	39	-27	-36	-46	37
2020	0	0	0	0	0	0	0	0

}

Historic - Current

}

(Historic - Current) / Current