

Northern CVP Water Temperature Report

October - 2020

Page	Description
2	- Mean Daily Water Temperature, Release Flow Rates and Air Temperatures with Monthly Averages
3	- Redding 10-Day Forecasted Air Temperatures
4	- Sacramento River Mean Daily Water Temperature, Air Temperature and 10-Day Forecasted Air Temperature Plot - Water Temperature Measuring Station Details - Temperature Control Point Details
5	- Shasta Lake Isothermobaths & Cold Water Pool Statistics
14	- Trinity Lake Isothermobaths & Cold Water Pool Statistics
23	- Whiskeytown Lake Isothermobaths & Cold Water Pool Statistics
x	- TCD Configuration (External Link)



— BUREAU OF —
RECLAMATION

All Data in this Report is Preliminary and Subject to Change

DATE	Mean Daily Water Temperatures (°F)														Mean Daily Release (CFS)			Mean Daily Air Temperatures (°F)			
	TCD ¹	SHD	SPP ¹	KWK	SAC	CCR ²	BSF	JLF	BND	RDB	IGO ³	LWS	DGC	NFH	Shasta Generation	Spring Creek P.P.	Keswick Total	RDD	BSF	RDB	
Sep	51.9	50.7	55.6	52.8	53.4	53.9	55.1	56.3	57.1	58.0	56.9	49.6	53.7	57.5	5097	1612	7075	78.1	71.7	74.3	
10/01	53.7	? 52.7	54.3	53.6	54.1	54.6	55.7	56.6	57.4	58.1	56.1	? 48.9	52.5	55.1	4509	1935	6863	↑ 87.0	73.2	78.0	
10/02	53.4	52.5	? 54.3	53.7	54.1	54.6	55.5	56.5	57.3	58.2	55.7	48.9	52.1	55.0	5104	1672	6853	78.5	69.1	72.8	
10/03	53.5	? 52.9	54.2	53.7	54.2	54.6	55.5	56.4	57.1	57.7	55.8	49.1	52.0	55.1	4205	1816	6850	79.0	68.7	70.7	
10/04	53.5	52.9	54.2	53.8	54.1	54.4	55.1	56.0	56.7	57.5	55.1	49.1	51.7	54.4	5194	1833	6827	73.0	63.9	67.9	
10/05	53.6	52.9	54.5	53.6	54.2	54.6	55.3	56.0	56.6	57.1	55.2	49.0	51.1	53.8	5737	328	6649	73.0	64.0	69.4	
10/06	53.9	53.3	54.4	53.6	54.0	54.4	55.2	56.0	56.6	57.3	54.9	48.9	51.1	53.6	5651	527	6651	70.0	62.6	68.1	
10/07	54.5	? 53.8	54.4	53.7	54.0	54.4	55.1	55.9	56.6	57.2	54.8	49.0	51.0	53.4	5931	380	6650	69.0	62.0	66.9	
10/08	54.6	53.8	54.4	54.2	54.3	54.5	54.9	55.5	56.2	56.7	54.7	49.2	51.2	53.4	5609	716	6689	67.5	59.1	61.1	
10/09	54.8	? 54.3	54.4	54.3	54.6	55.1	55.5	? 56.0	56.5	56.6	54.8	49.4	51.2	53.5	4899	658	6056	63.5	58.7	60.4	
10/10	54.9	54.4	54.5	54.6	54.6	55.0	55.6	56.3	57.0	57.4	54.8	49.6	51.8	53.9	5298	445	6027	64.0	60.0	61.9	
10/11	54.6	54.4	54.5	54.6	54.9	55.5	55.8	56.3	56.8	57.1	54.9	49.6	51.1	53.8	5262	674	6045	67.0	60.4	65.8	
10/12	? 54.6	? 54.2	? 54.6	54.8	55.1	55.6	56.0	56.7	57.2	57.6	55.6	49.9	52.0	54.2	5202	774	6044	68.0	61.8	66.7	
10/13	54.8	54.4	54.7	54.7	55.1	55.8	56.5	57.3	57.8	58.2	56.0	50.0	53.0	55.3	5264	674	6054	72.0	65.8	70.8	
10/14	54.4	54.2	54.7	55.0	55.4	56.0	56.8	57.6	58.2	58.8	56.1	50.1	53.6	56.3	5017	677	6043	73.0	69.8	75.8	
10/15	53.4	53.4	54.7	55.0	55.4	56.0	56.6	57.4	58.1	58.6	55.6	50.3	52.7	55.6	4744	677	6044	82.5	79.2	80.7	
10/16	53.2	? 53.1	54.7	54.8	55.4	56.1	? 56.9	57.6	58.2	58.7	55.9	50.4	52.7	55.0	4600	840	5815	↑ 84.5	77.1	81.1	
10/17	53.3	? 53.0	54.8	54.1	54.9	55.6	56.7	57.7	58.5	59.2	55.6	50.4	53.1	55.3	4293	835	5611	83.5	74.7	77.7	
10/18	53.5	53.2	54.8	53.8	54.5	55.1	56.2	57.2	58.0	59.0	55.5	50.3	53.3	55.8	4385	748	5410	↑ 76.0	67.8	71.5	
10/19	53.7	53.3	54.9	53.9	54.4	55.0	55.8	56.6	57.3	58.2	55.4	50.3	52.9	55.8	4068	825	5213	72.5	64.9	69.2	
10/20	53.8	53.6	54.9	54.0	54.6	55.3	56.0	56.8	57.3	57.8	55.4	50.4	52.4	55.2	4053	986	5040	77.0	68.7	74.3	
10/21	53.6	53.2	54.9	54.1	54.7	55.4	56.4	57.3	58.0	58.5	55.6	50.5	52.6	55.0	3930	713	5076	79.5	73.3	77.0	
10/22	54.3	53.8	55.0	54.0	54.5	54.6	55.0	55.7	56.3	57.0	!	-	50.2	51.8	3695	676	5012	67.5	66.5	68.2	
10/23	53.9	53.9	54.9	53.7	54.1	54.4	54.5	54.9	55.2	55.5	54.0	50.0	50.0	52.5	3824	687	5006	67.0	62.2	63.9	
10/24	54.1	52.7	55.0	53.8	54.1	54.3	54.5	54.9	55.2	55.5	53.7	50.1	50.0	51.8	6343	530	5009	59.5	54.6	57.0	
10/25	54.4	53.2	55.1	53.6	53.9	53.8	53.8	54.1	54.5	54.7	53.1	49.8	50.0	51.8	4309	753	5012	54.5	53.5	55.2	
10/26	54.1	!	-	56.3	53.4	53.5	53.3	52.5	52.5	52.6	52.6	49.4	47.6	49.6	4398	17	5012	63.5	58.4	58.6	
10/27	54.0	? 53.4	55.6	53.6	53.7	54.0	53.8	53.9	54.0	53.5	53.7	49.4	47.6	48.6	5403	46	5013	69.0	63.0	63.3	
10/28	54.4	54.0	55.0	53.5	53.8	54.1	54.2	54.5	54.7	54.7	53.7	49.2	48.1	48.8	4521	627	5009	60.0	53.7	56.0	
10/29	54.3	54.1	54.9	53.8	53.9	54.1	54.0	54.2	54.5	54.7	53.5	? 48.8	48.2	? 49.1	4159	688	5005	58.5	52.6	56.5	
10/30	54.5	54.3	54.9	54.0	54.0	54.4	54.2	54.3	54.5	54.5	53.4	48.6	48.0	49.1	4582	440	5017	60.0	52.5	57.3	
10/31	54.6	54.5	54.9	54.1	54.1	54.5	54.4	54.6	54.8	54.8	53.7	48.6	48.2	49.3	4506	454	5005	63.0	55.1	59.7	
Oct	54.1	53.6	54.8	54.0	54.4	54.8	55.3	55.9	56.4	56.9	54.8	49.6	51.1	53.3	4797	763	5762	70.4	63.8	67.2	
															Total CFS	148695	23651	178610			
															Total AF	294930	46911	354266			

Legend

- ? = 1-9 hours of data missing (Average includes estimations)
- ! = 10 or more hours of data missing (Average not calculated)
- # = Station out of service
- ↑ = Record high air temperature
- ↓ = Record low air temperature
- = Monthly Averages

Notes

- ¹ Temperatures are weighted averages based on individual penstock flow and temperature
- Highlighted cells in the TCD column indicate a TCD change was made on that day
- ² Current Sacramento River control point (see page 4 for more details)
- ³ IGO thermistor vandalized and out of commission as of 7/29/2020. Data is from nearby temperature logger. A bias has been applied to better represent the IGO location.

DATE	Redding (RDD) Daily Air Temperatures (°F)																																			
	Actual			Forecasted																																
	Previous Day			Current Day			1 Day			2 Days			3 Days			4 Days			5 Days			6 Days			7 Days			8 Days			9 Days			10 Days		
	↓	↑	Avg	↓	↑	Avg	↓	↑	Avg	↓	↑	Avg	↓	↑	Avg	↓	↑	Avg	↓	↑	Avg	↓	↑	Avg	↓	↑	Avg	↓	↑	Avg	↓	↑	Avg	↓	↑	Avg
10/01	57	103	80.0	69	103	86.0	61	100	80.5	61	100	80.5	59	90	74.5	55	92	73.5	56	93	74.5	56	89	72.5	54	85	69.5	56	76	66.0	56	72	64.0	53	77	65.0
10/02	68	106	87.0	60	103	81.5	61	101	81.0	59	92	75.5	58	94	76.0	56	94	75.0	55	90	72.5	52	83	67.5	54	78	66.0	57	70	63.5	52	75	63.5	51	76	63.5
10/03	57	100	78.5	60	99	79.5	56	93	74.5	54	92	73.0	54	93	73.5	52	88	70.0	52	83	67.5	51	80	65.5	56	72	64.0	50	75	62.5	51	73	62.0	49	73	61.0
10/04	58	100	79.0	56	96	76.0	53	95	74.0	53	94	73.5	53	88	70.5	52	76	64.0	51	72	61.5	54	69	61.5	53	75	64.0	49	72	60.5	53	77	65.0	49	81	65.0
10/05	56	90	73.0	51	93	72.0	51	92	71.5	52	89	70.5	51	78	64.5	51	70	60.5	52	69	60.5	47	73	60.0	53	84	68.5	54	85	69.5	54	86	70.0	53	84	68.5
10/06	51	95	73.0	49	93	71.0	50	90	70.0	51	80	65.5	51	71	61.0	51	67	59.0	46	70	58.0	49	77	63.0	55	89	72.0	56	84	70.0	52	81	66.5	48	83	65.5
10/07	47	93	70.0	50	91	70.5	50	81	65.5	49	78	63.5	51	68	59.5	45	72	58.5	48	79	63.5	50	82	66.0	51	86	68.5	54	85	69.5	50	83	66.5	50	83	66.5
10/08	48	90	69.0	53	79	66.0	48	78	63.0	52	73	62.5	48	77	62.5	50	85	67.5	51	86	68.5	52	87	69.5	61	93	77.0	58	89	73.5	53	86	69.5	52	81	66.5
10/09	52	83	67.5	49	79	64.0	55	70	62.5	50	77	63.5	47	85	66.0	49	87	68.0	51	87	69.0	54	88	71.0	59	92	75.5	57	89	73.0	54	85	69.5	54	80	67.0
10/10	48	79	63.5	58	70	64.0	45	77	61.0	46	83	64.5	51	89	70.0	55	90	72.5	56	92	74.0	57	93	75.0	56	93	74.5	58	82	70.0	48	72	60.0	47	71	59.0
10/11	56	72	64.0	53	79	66.0	46	83	64.5	49	87	68.0	52	87	69.5	57	91	74.0	55	91	73.0	53	91	72.0	54	93	73.5	54	85	69.5	51	80	65.5	51	81	66.0
10/12	52	82	67.0	48	84	66.0	49	88	68.5	53	87	70.0	58	92	75.0	57	92	74.5	53	90	71.5	51	85	68.0	52	88	70.0	53	83	68.0	50	78	64.0	50	76	63.0
10/13	47	89	68.0	53	90	71.5	53	90	71.5	56	91	73.5	57	93	75.0	55	91	73.0	52	84	68.0	49	82	65.5	52	85	68.5	51	82	66.5	45	80	62.5	46	78	62.0
10/14	53	91	72.0	59	91	75.0	58	91	74.5	57	93	75.0	57	92	74.5	52	87	69.5	50	85	67.5	49	83	66.0	52	89	70.5	53	81	67.0	48	78	63.0	51	77	64.0
10/15	56	90	73.0	72	93	82.5	58	94	76.0	57	93	75.0	52	87	69.5	49	83	66.0	50	83	66.5	47	79	63.0	51	88	69.5	52	80	66.0	43	79	61.0	45	77	61.0
10/16	72	93	82.5	75	97	86.0	58	93	75.5	54	89	71.5	52	88	70.0	52	87	69.5	52	85	68.5	52	82	67.0	51	86	68.5	51	83	67.0	49	78	63.5	49	76	62.5
10/17	71	98	84.5	73	97	85.0	59	93	76.0	53	90	71.5	54	90	72.0	56	89	72.5	55	85	70.0	49	83	66.0	47	81	64.0	49	74	61.5	40	76	58.0	42	76	59.0
10/18	69	98	83.5	58	95	76.5	55	92	73.5	56	91	73.5	55	87	71.0	51	80	65.5	46	78	62.0	46	73	59.5	48	79	63.5	46	75	60.5	42	78	60.0	45	76	60.5
10/19	57	95	76.0	61	89	75.0	57	90	73.5	54	84	69.0	47	77	62.0	47	79	63.0	45	72	58.5	43	74	58.5	41	83	62.0	49	81	65.0	45	78	61.5	45	76	60.5
10/20	52	93	72.5	61	92	76.5	56	87	71.5	46	75	60.5	45	81	63.0	44	77	60.5	41	73	57.0	40	79	59.5	47	87	67.0	50	81	65.5	44	77	60.5	44	75	59.5
10/21	60	94	77.0	71	87	79.0	49	76	62.5	46	81	63.5	44	75	59.5	38	64	51.0	36	68	52.0	41	75	58.0	43	85	64.0	49	79	64.0	42	76	59.0	42	75	58.5
10/22	69	90	79.5	61	79	70.0	48	81	64.5	45	75	60.0	42	68	55.0	38	71	54.5	45	79	62.0	43	80	61.5	47	87	67.0	49	78	63.5	45	76	60.5	44	77	60.5
10/23	60	75	67.5	61	82	71.5	44	77	60.5	42	68	55.0	38	75	56.5	44	81	62.5	44	81	62.5	43	81	62.0	46	84	65.0	49	79	64.0	43	76	59.5	44	75	59.5
10/24	51	83	67.0	43	75	59.0	43	68	55.5	40	73	56.5	45	82	63.5	43	81	62.0	43	80	61.5	45	80	62.5	46	84	65.0	49	78	63.5	44	75	59.5	43	75	59.0
10/25	43	76	59.5	44	65	54.5	41	73	57.0	45	82	63.5	42	79	60.5	42	78	60.0	43	73	58.0	43	78	60.5	45	84	64.5	46	77	61.5	44	75	59.5	45	74	59.5
10/26	43	66	54.5	53	75	64.0	46	85	65.5	43	81	62.0	43	82	62.5	44	72	58.0	45	75	60.0	49	77	63.0	43	84	63.5	47	70	58.5	48	73	60.5	47	73	60.0
10/27	52	75	63.5	58	86	72.0	43	81	62.0	42	83	62.5	43	81	62.0	44	82	63.0	44	83	63.5	45	82	63.5	47	78	62.5	51	77	64.0	45	76	60.5	43	74	58.5
10/28	51	87	69.0	45	82	63.5	41	83	62.0	43	81	62.0	44	83	63.5	45	84	64.5	45	83	64.0	47	79	63.0	49	80	64.5	51	73	62.0	48	66	57.0	40	66	53.0
10/29	40	80	60.0	39	81	60.0	42	80	61.0	45	82	63.5	46	82	64.0	45	82	63.5	47	80	63.5	48	83	65.5	49	79	64.0	46	65	55.5	38	62	50.0	39	63	51.0
10/30	37	80	58.5	40	80	60.0	46	83	64.5	46	83	64.5	46	83	64.5	47	80	63.5	47	79	63.0	47	80	63.5	46	76	61.0	43	67	55.0	38	67	52.5	38	66	52.0
10/31	39	81	60.0	41	82	61.5	41	84	62.5	43	84	63.5	45	79	62.0	45	81	63.0	47	82	64.5	45	67	56.0	43	60	51.5	37	59	48.0	39	59	49.0	40	63	51.5

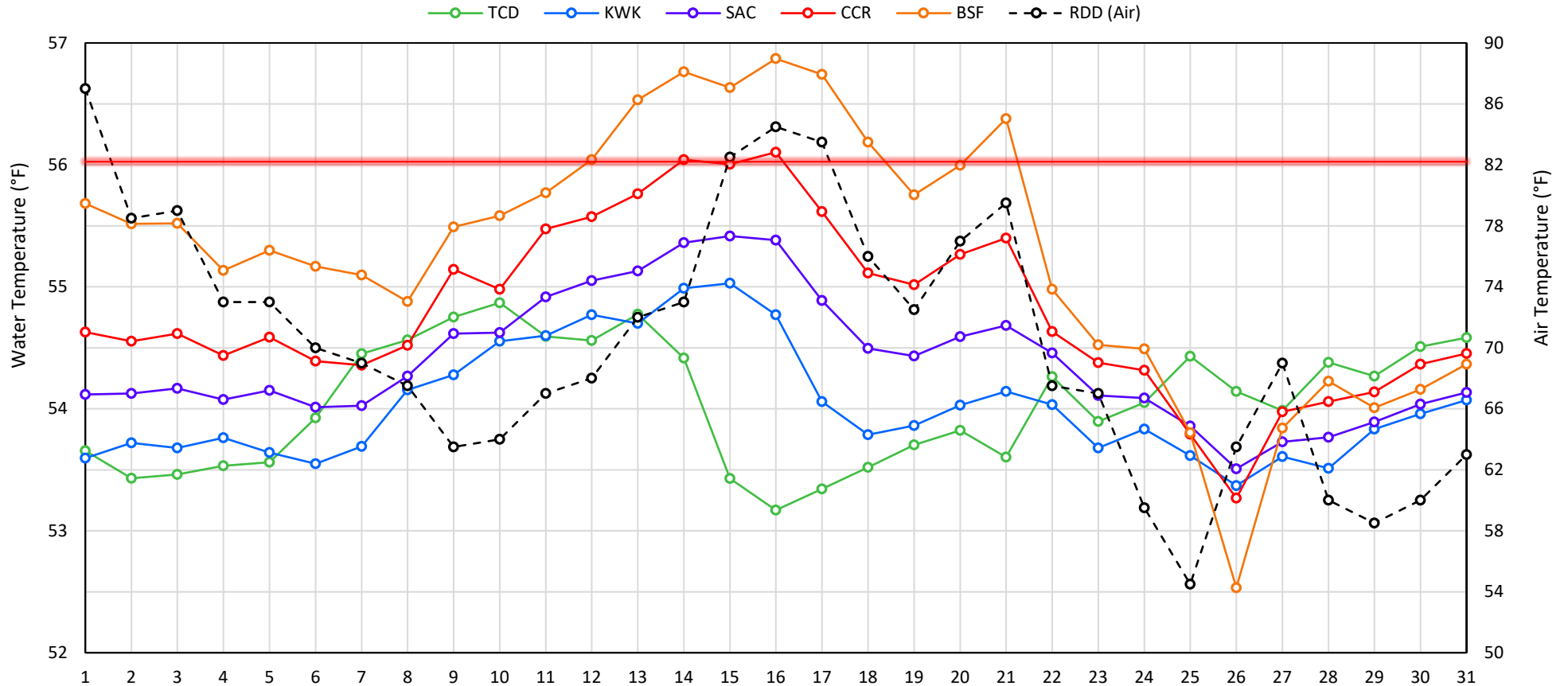
Web Links

- [10-Day Min/Max Forecast](#)
- [Previous Days Min/Max Actuals](#)

Legend

- NR = Forecasted temperatures not recorded
- 100** = Previous day actual temperatures in red and bolded indicate a record temperature for that date

Mean Daily Temperatures



Station Details

Code	Body of Water	Location ¹	CDEC Link
TCD	N/A	Shasta Power Plant	N/A
SHD	Sacramento River	0.3 miles downstream of Shasta Power Plant	Click Here
SPP	N/A	Spring Creek Power Plant	N/A
KWK	Sacramento River	0.8 miles downstream of Keswick Dam	Click Here
SAC	Sacramento River	4.8 miles downstream of Keswick Dam	Click Here
CCR	Sacramento River	9.7 miles downstream of Keswick Dam	Click Here
BSF	Sacramento River	25 miles downstream of Keswick Dam	Click Here
JLF	Sacramento River	34 miles downstream of Keswick Dam	Click Here
BND	Sacramento River	41 miles downstream of Keswick Dam	Click Here
RDB	Sacramento River	58 miles downstream of Keswick Dam	Click Here
IGO	Clear Creek	7.3 miles downstream of Whiskeytown Dam	Click Here
LWS	Trinity River	1.1 miles downstream of Lewiston Dam	Click Here
DGC	Trinity River	19 miles downstream of Lewiston Dam	Click Here
NFH	Trinity River	38 miles downstream of Lewiston Dam	Click Here

Water Right Temperature Control Points

River	Point	Temp. (°F)	Begin Date	End Date
Sacramento	BSF	56	05/15/2019	09/20/2020
Sacramento	CCR	56	09/21/2020	TBD
Trinity	DGC	56	09/15/2020	10/01/2020
Trinity	NFH	56	10/01/2020	12/31/2020

Notes

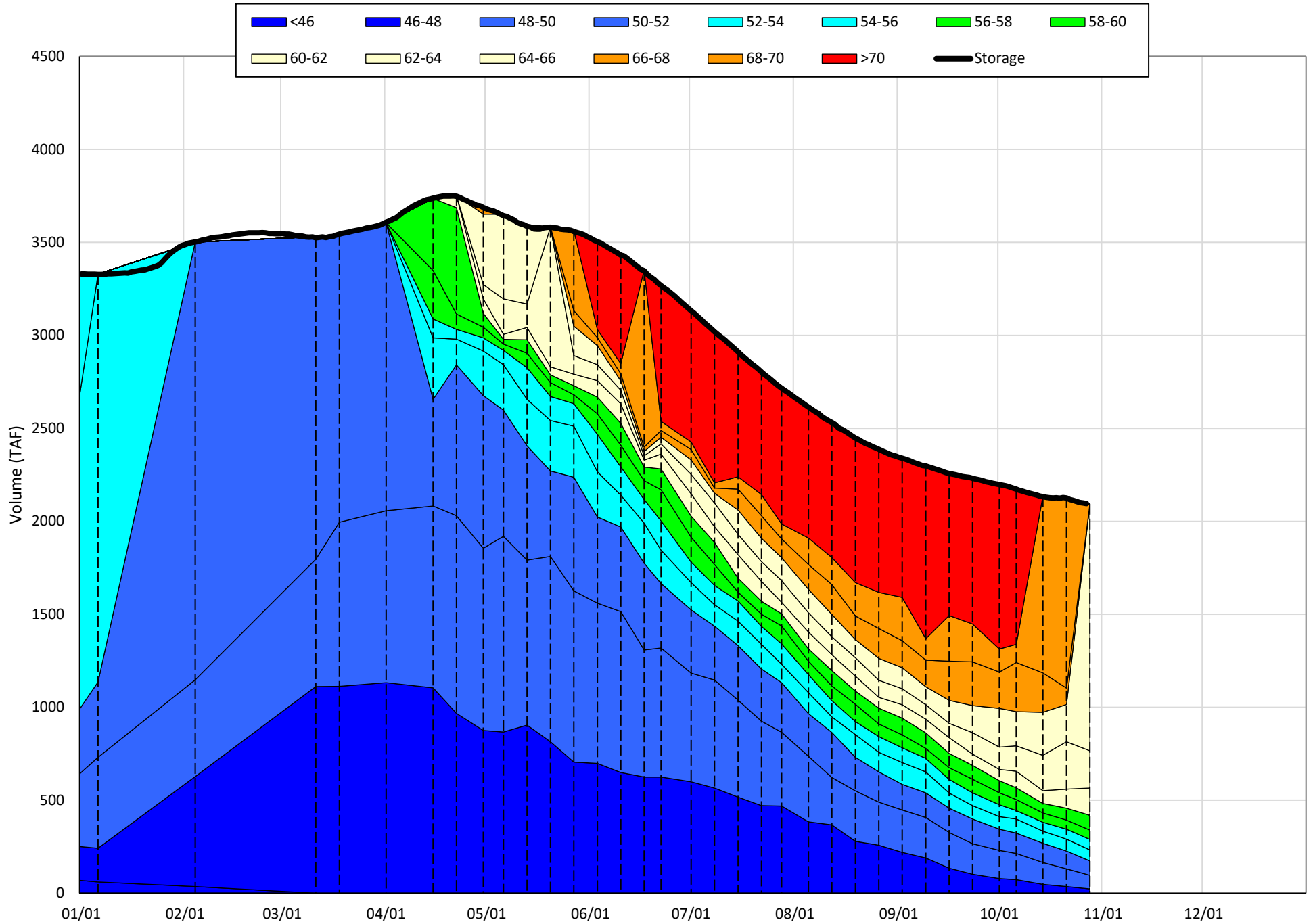
¹ Distances are approximate

Shasta Lake Isothermobaths & Cold Water Pool Statistics

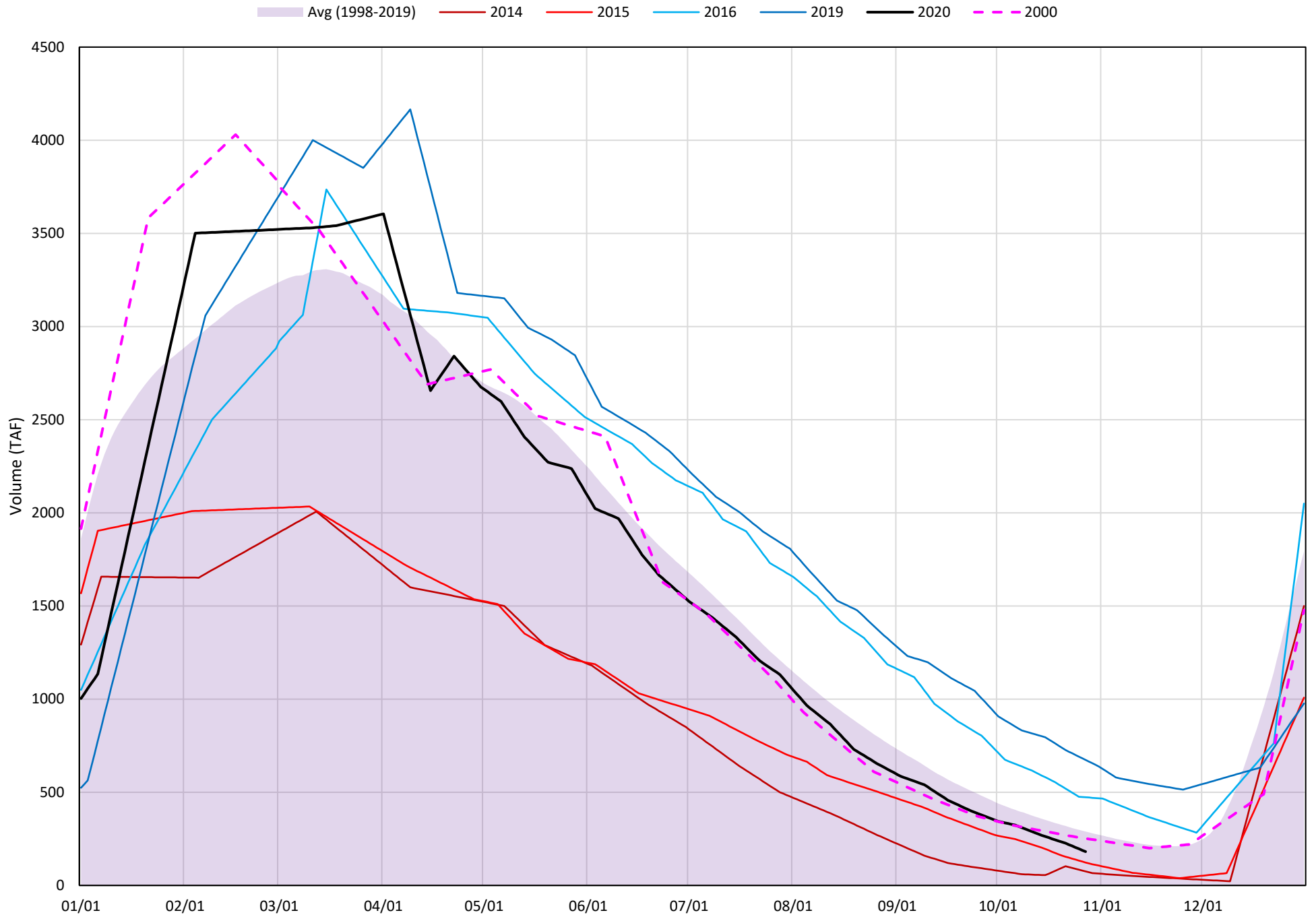
2020

Page	Description
6	- Shasta Lake Isothermobaths Plot
7	- Shasta Lake Cold Water Pool Volume $\leq 52^{\circ}\text{F}$
8	- Shasta Lake Cold Water Pool Volume $\leq 50^{\circ}\text{F}$
9	- Shasta Lake Cold Water Pool Volume $\leq 48^{\circ}\text{F}$
10	- Shasta Lake Cold Water Pool Volume $\leq 52^{\circ}\text{F}$ - Percent Exceedances
11	- Shasta Lake Cold Water Pool Volume $\leq 50^{\circ}\text{F}$ - Percent Exceedances
12	- Shasta Lake Cold Water Pool Volume $\leq 48^{\circ}\text{F}$ - Percent Exceedances
13	- Shasta Lake Cold Water Pool Comparison by Year

Shasta Lake Isothermobaths Plot - 2020

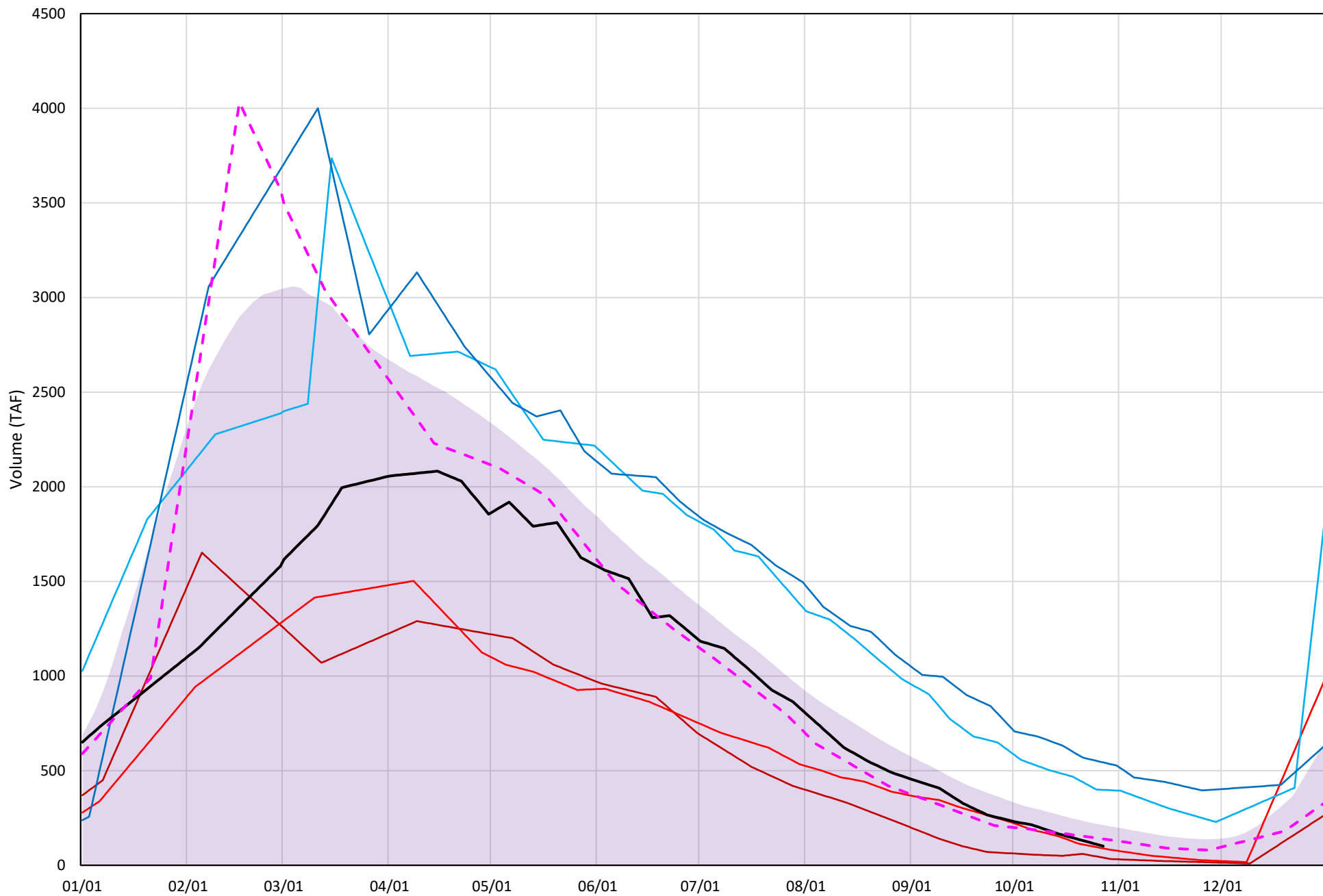


Shasta Lake Cold Water Pool Volume $\leq 52^{\circ}\text{F}$



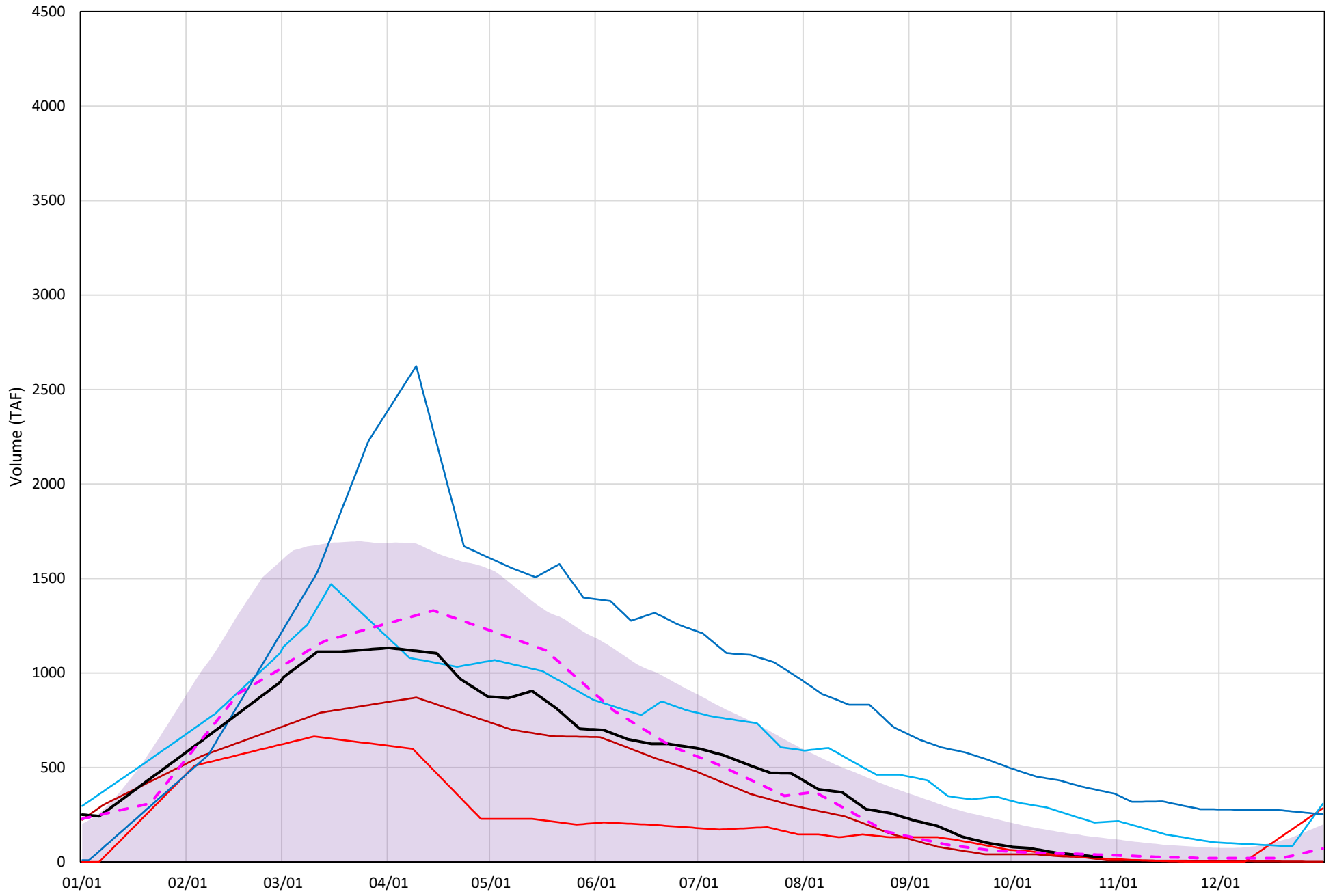
Shasta Lake Cold Water Pool Volume $\leq 50^{\circ}\text{F}$

Avg (1998-2019) 2014 2015 2016 2019 2020 2000



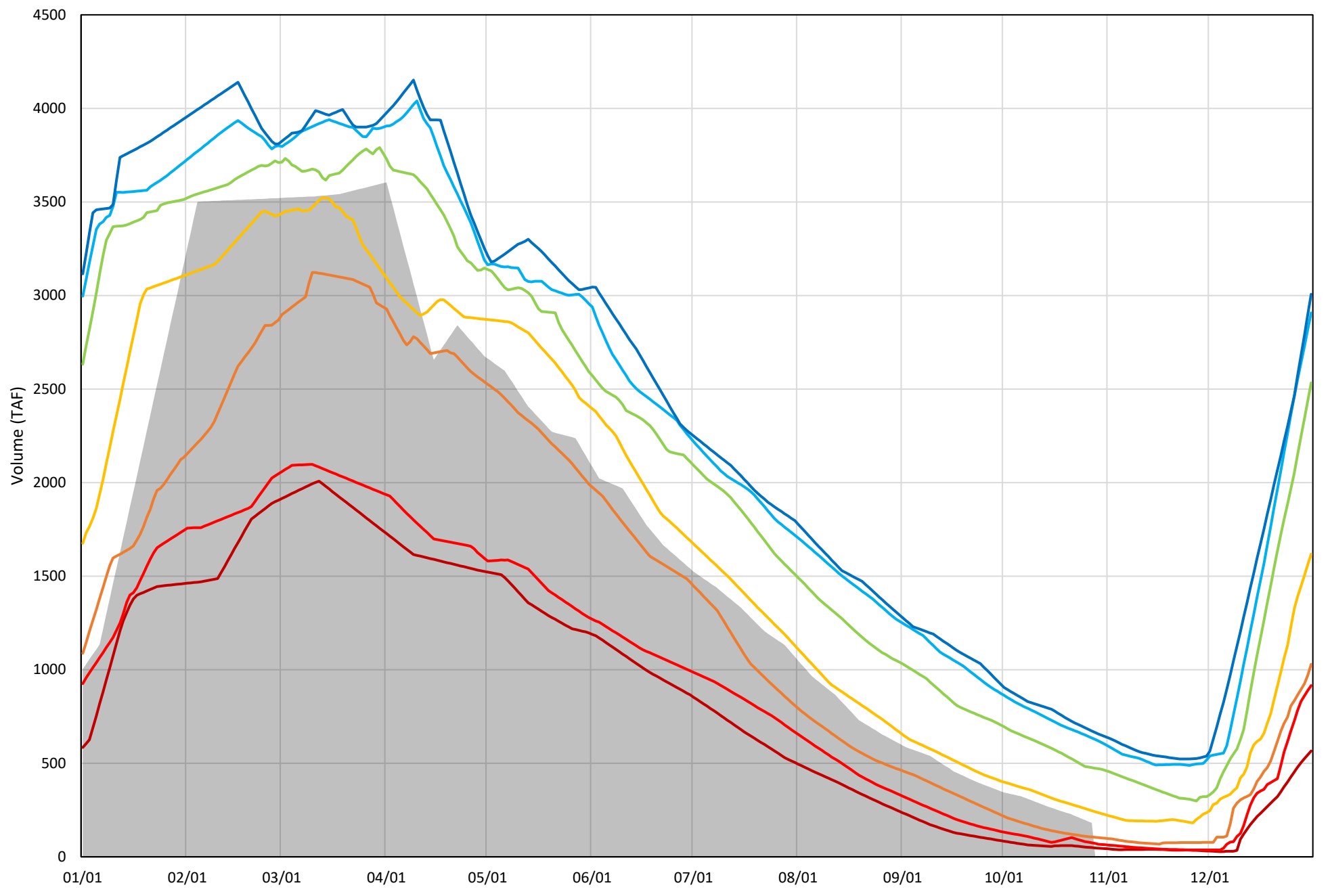
Shasta Lake Cold Water Pool Volume $\leq 48^{\circ}\text{F}$

Avg (1998-2019) 2014 2015 2016 2019 2020 2000

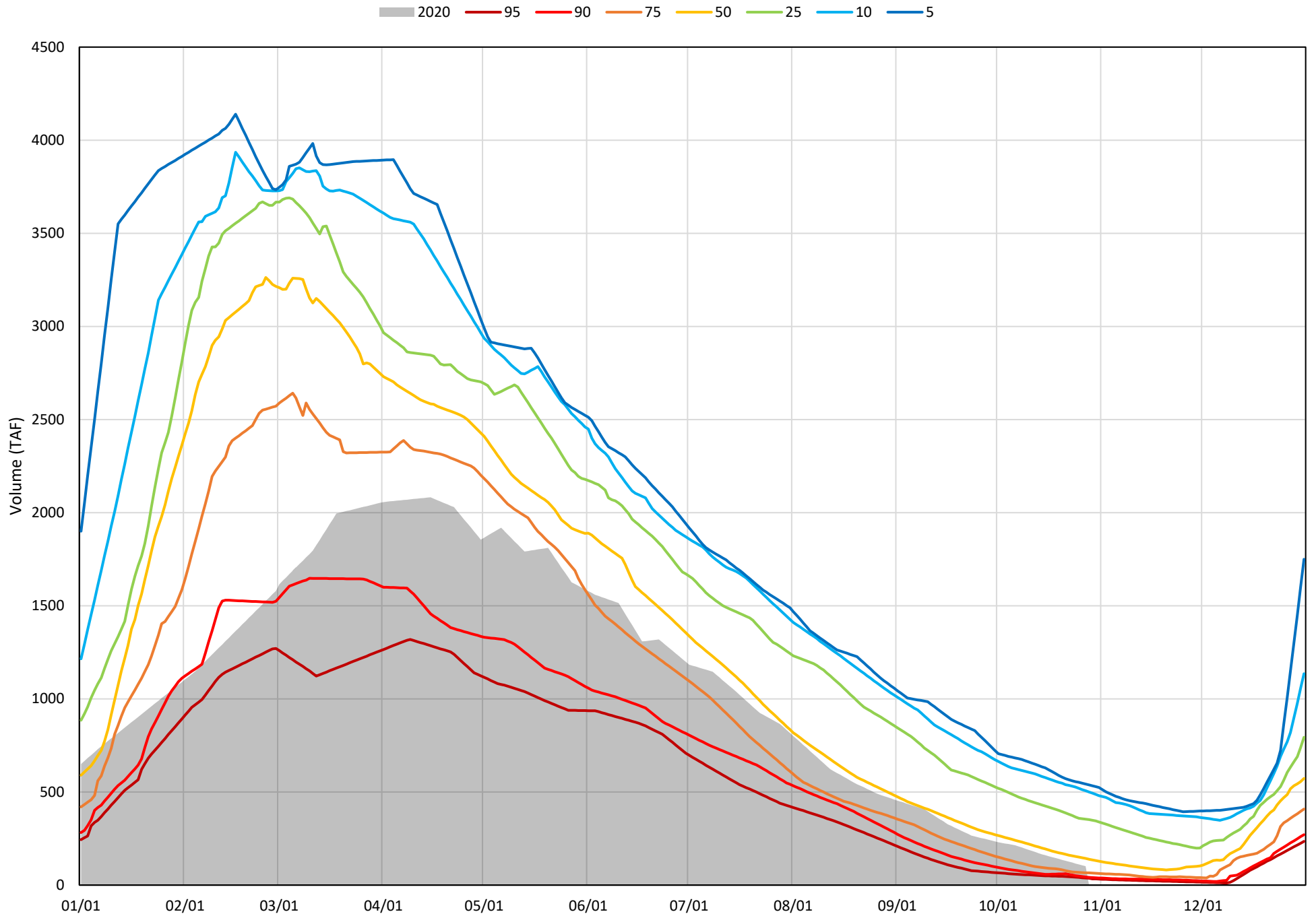


Shasta Lake Cold Water Pool Volume $\leq 52^{\circ}\text{F}$ - Percent Exceedances (1998-2019)

2020 95 90 75 50 25 10 5

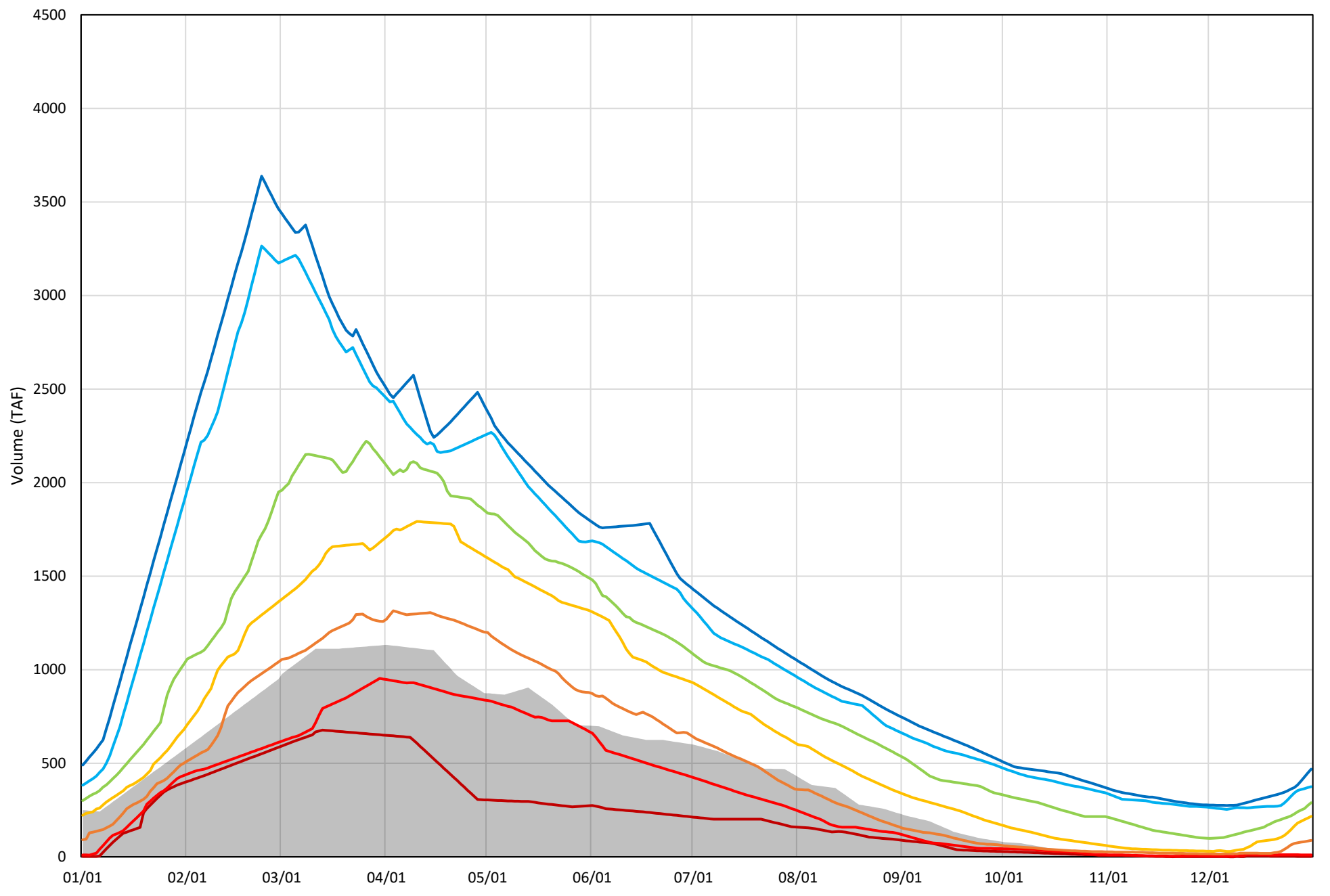


Shasta Lake Cold Water Pool Volume $\leq 50^{\circ}\text{F}$ - Percent Exceedances (1998-2019)



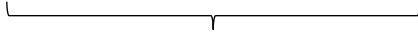
Shasta Lake Cold Water Pool Volume $\leq 48^{\circ}\text{F}$ - Percent Exceedances (1998-2019)

2020 95 90 75 50 25 10 5

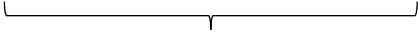


Shasta Lake Cold Water Pool Comparison by Year (for Specified Date)

Oct-28 2020	Δ TAF				% Δ			
	≤52°	≤50°	≤48°	Abs. Avg.	≤52°	≤50°	≤48°	Abs. Avg.
1998	-33	-50	-14	32	-18	-49	-56	41
1999	307	305	279	297	169	301	1122	531
2000	71	38	13	41	39	38	53	43
2001	-17	21	55	31	-10	20	222	84
2002	130	142	131	134	72	141	525	246
2003	142	32	-1	58	78	31	-3	37
2004	-77	-24	15	39	-42	-24	61	42
2005	-75	-38	3	39	-41	-37	14	31
2006	158	149	122	143	87	147	492	242
2007	-106	-44	14	54	-58	-44	55	52
2008	-136	-63	3	68	-75	-62	13	50
2009	-93	-34	22	50	-51	-33	90	58
2010	339	231	130	234	187	228	524	313
2011	489	435	371	432	270	429	1492	730
2012	223	238	204	222	123	235	821	393
2013	-5	45	75	42	-3	45	302	116
2014	-106	-61	-13	60	-59	-60	-51	57
2015	-59	-13	-6	26	-32	-12	-23	23
2016	292	297	185	258	161	293	745	400
2017	373	337	293	335	206	333	1179	573
2018	60	64	37	54	33	63	149	82
2019	492	442	351	429	272	437	1412	707
2020	0	0	0	0	0	0	0	0



Historic - Current



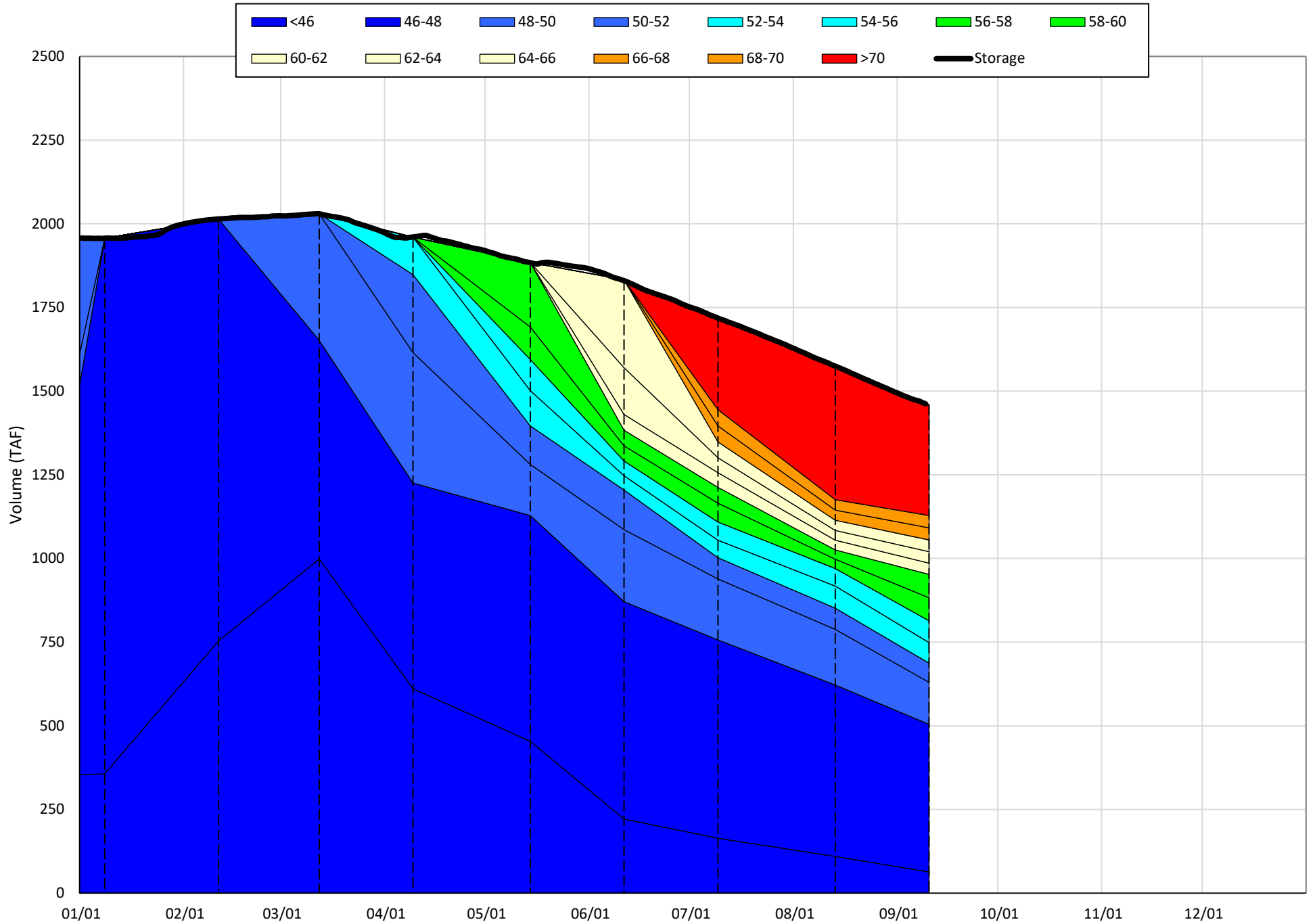
(Historic - Current) / Current

Trinity Lake Isothermobaths & Cold Water Pool Statistics

2020

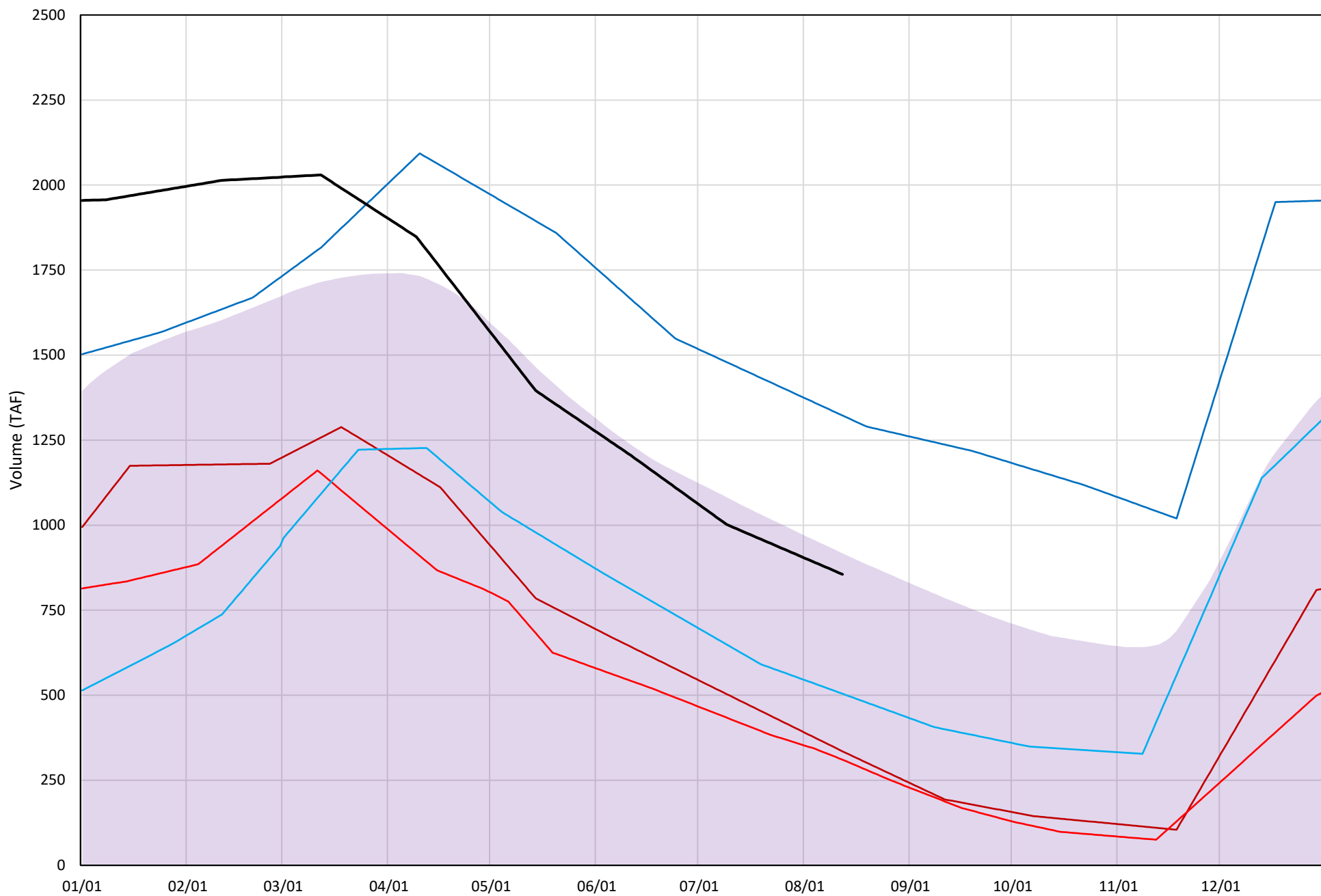
Page	Description
15	- Trinity Lake Isothermobaths Plot
16	- Trinity Lake Cold Water Pool Volume $\leq 52^{\circ}\text{F}$
17	- Trinity Lake Cold Water Pool Volume $\leq 50^{\circ}\text{F}$
18	- Trinity Lake Cold Water Pool Volume $\leq 48^{\circ}\text{F}$
19	- Trinity Lake Cold Water Pool Volume $\leq 52^{\circ}\text{F}$ - Percent Exceedances
20	- Trinity Lake Cold Water Pool Volume $\leq 50^{\circ}\text{F}$ - Percent Exceedances
21	- Trinity Lake Cold Water Pool Volume $\leq 48^{\circ}\text{F}$ - Percent Exceedances
22	- Trinity Lake Cold Water Pool Comparison by Year

Trinity Lake Isothermobaths Plot - 2020



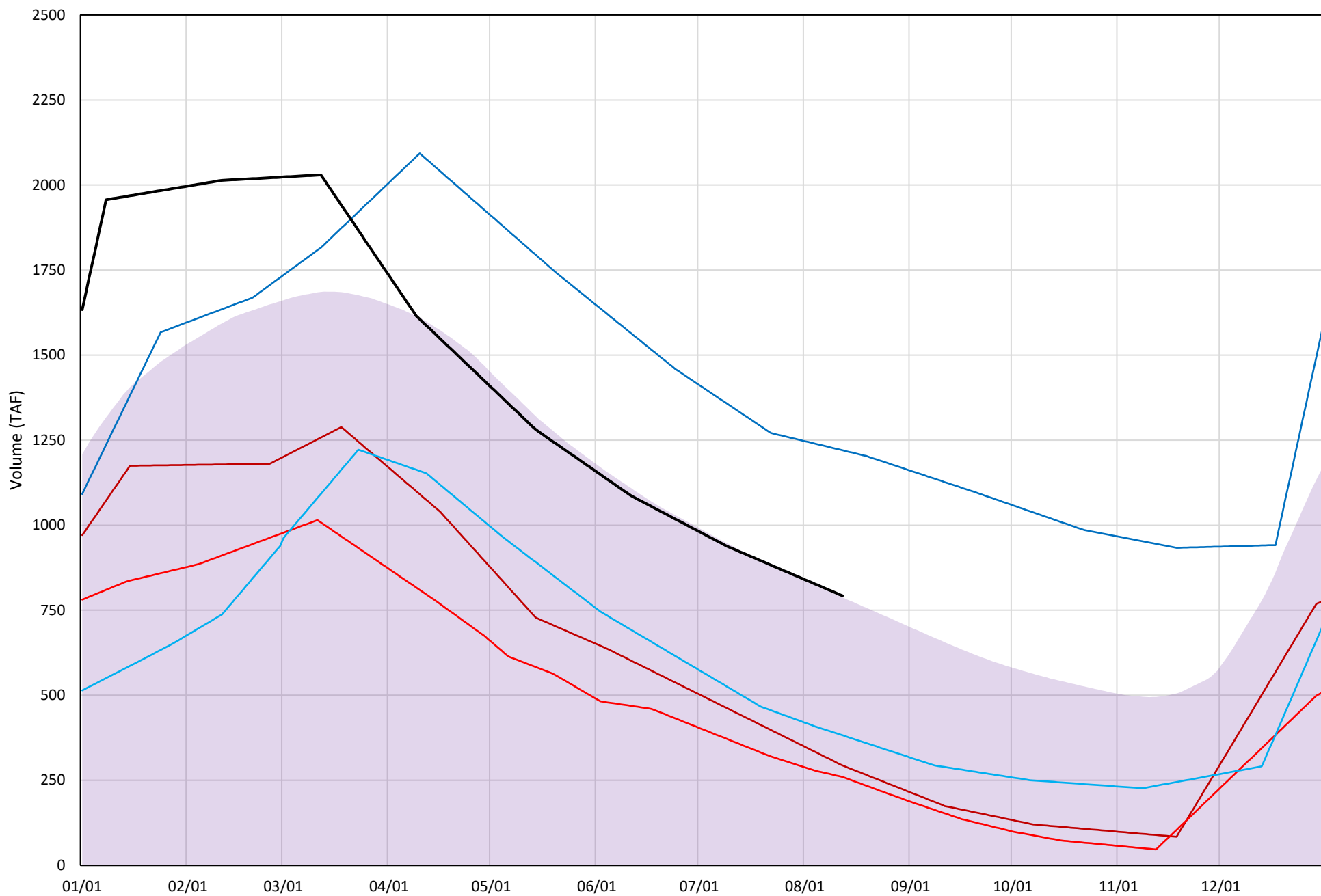
Trinity Lake Cold Water Pool Volume ≤52°F

Avg (2000-2019) 2014 2015 2016 2019 2020



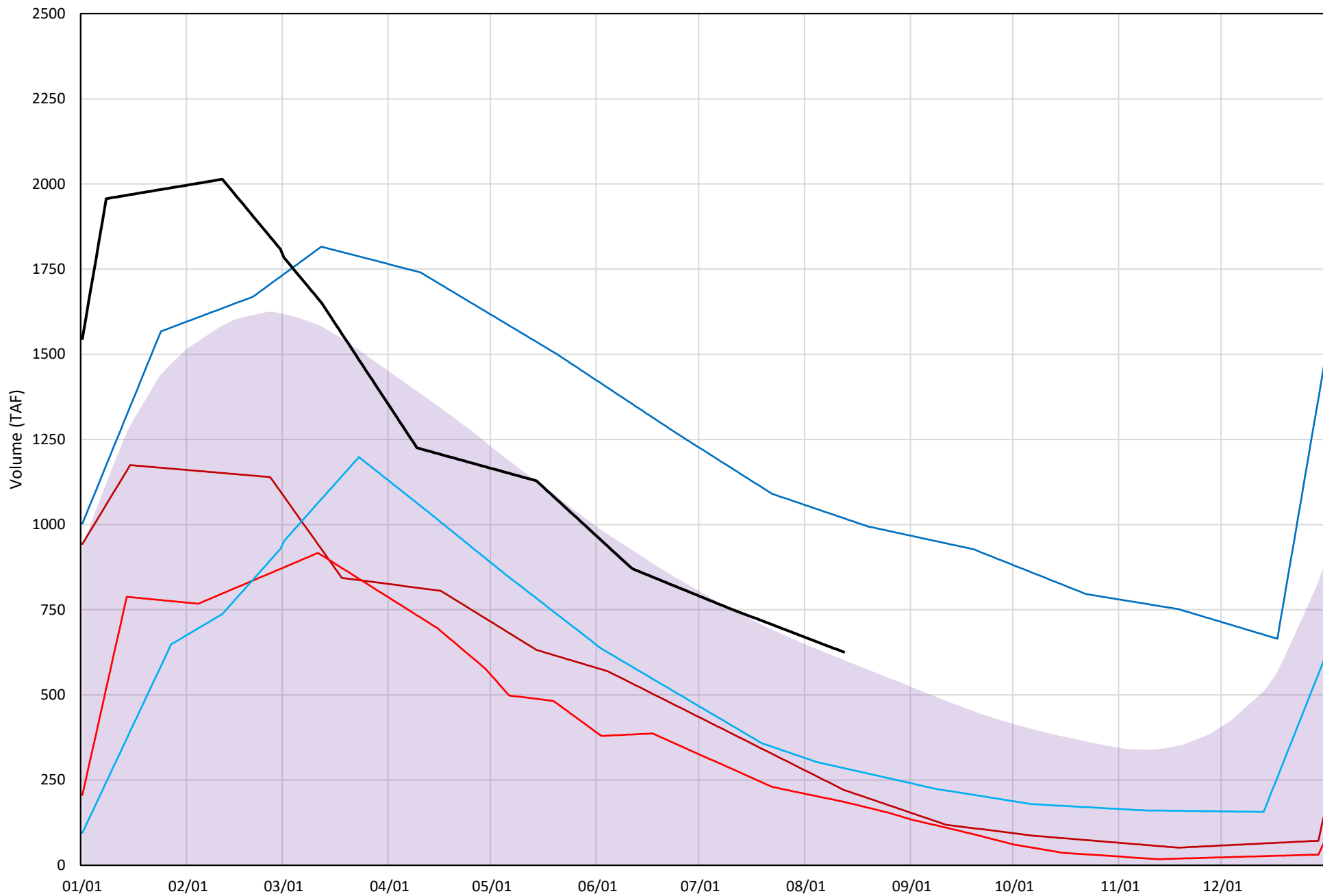
Trinity Lake Cold Water Pool Volume ≤50°F

Avg (2000-2019) 2014 2015 2016 2019 2020

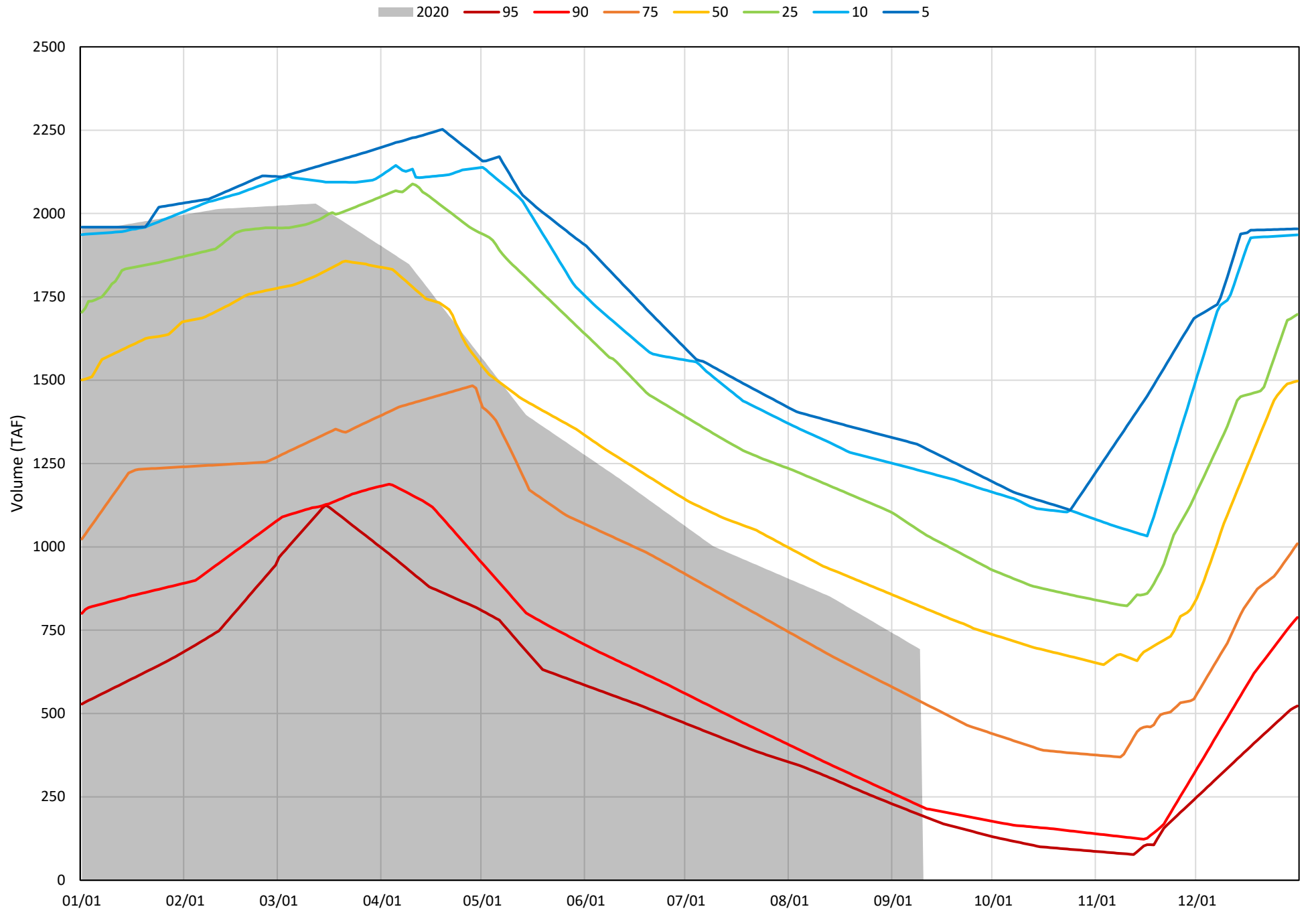


Trinity Lake Cold Water Pool Volume $\leq 48^{\circ}\text{F}$

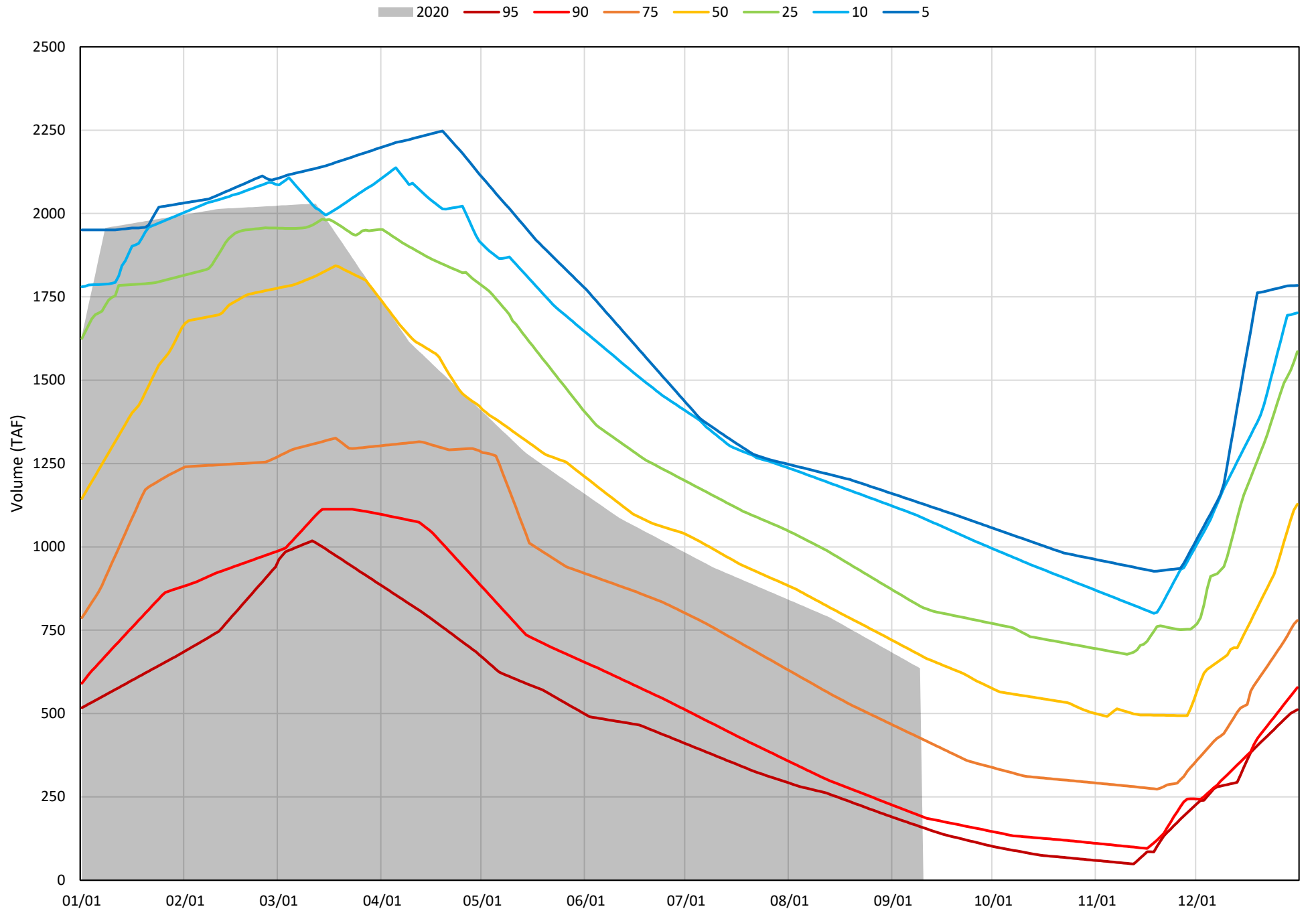
Avg (2000-2019) 2014 2015 2016 2019 2020



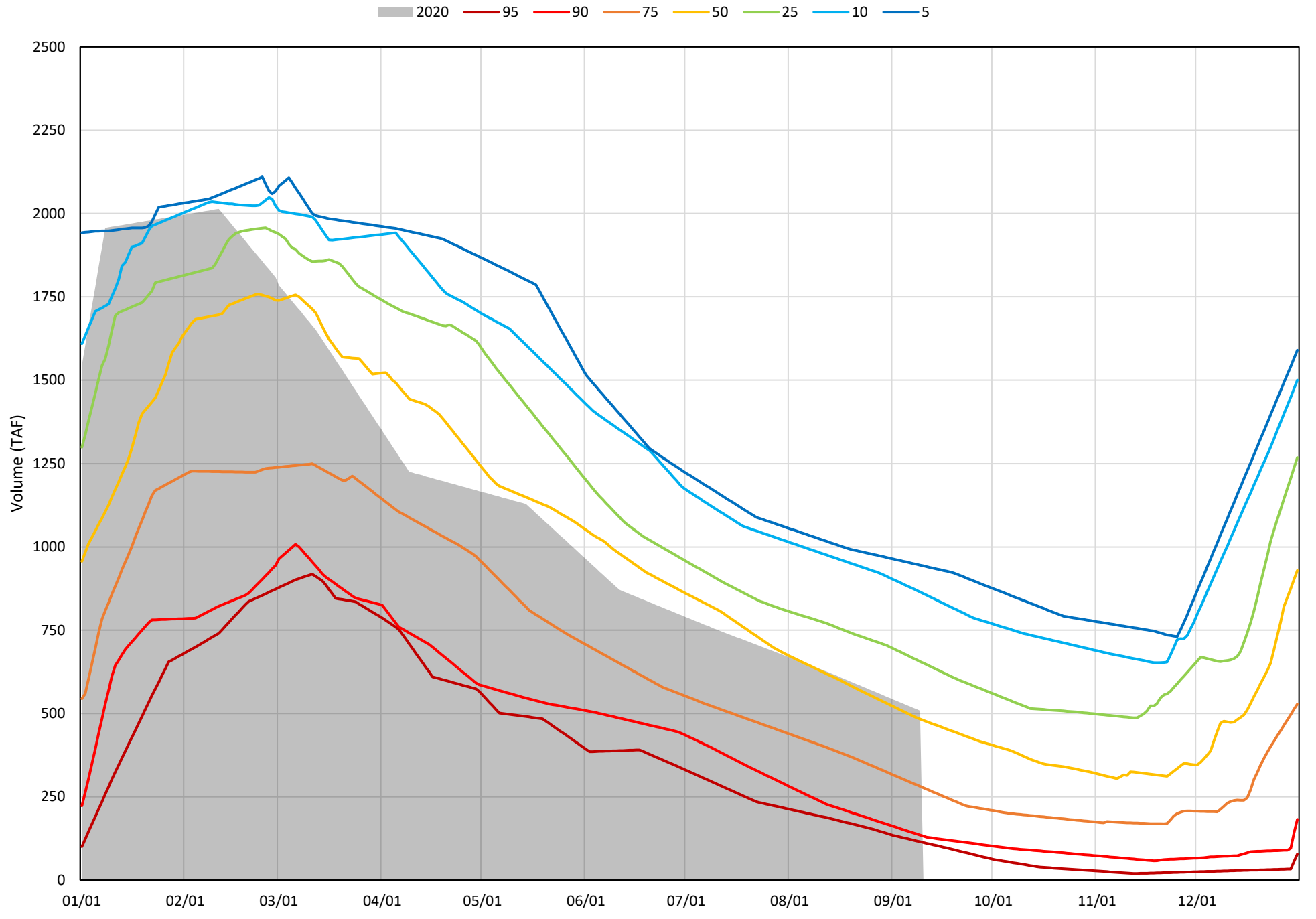
Trinity Lake Cold Water Pool Volume ≤52°F - Percent Exceedances (2000-2019)



Trinity Lake Cold Water Pool Volume $\leq 50^{\circ}\text{F}$ - Percent Exceedances (2000-2019)



Trinity Lake Cold Water Pool Volume $\leq 48^{\circ}\text{F}$ - Percent Exceedances (2000-2019)



Trinity Cold Water Pool Comparison by Year (for Specified Date)

Sep-10 2020	Δ TAF				% Δ			
	≤52°	≤50°	≤48°	Abs. Avg.	≤52°	≤50°	≤48°	Abs. Avg.
2000	186	39	-41	89	27	6	-8	14
2001	61	16	-12	29	9	2	-2	5
2002	73	40	44	53	11	6	9	9
2003	369	186	48	201	53	29	9	31
2004	130	35	-61	75	19	5	-12	12
2005	311	183	-39	178	45	29	-8	27
2006	421	299	166	295	61	47	33	47
2007	128	87	91	102	18	14	18	17
2008	-183	-244	-248	225	-26	-38	-49	38
2009	-255	-275	-284	272	-37	-43	-56	45
2010	120	-15	-162	99	17	-2	-32	17
2011	614	465	337	472	89	73	66	76
2012	393	367	358	373	57	58	70	62
2013	-75	-103	-110	96	-11	-16	-22	16
2014	-490	-453	-383	442	-71	-71	-75	72
2015	-497	-476	-394	456	-72	-75	-77	75
2016	-289	-344	-286	306	-42	-54	-56	51
2017	244	86	9	113	35	13	2	17
2018	216	186	167	190	31	29	33	31
2019	548	498	441	496	79	78	87	81
2020	0	0	0	0	0	0	0	0

Historic - Current

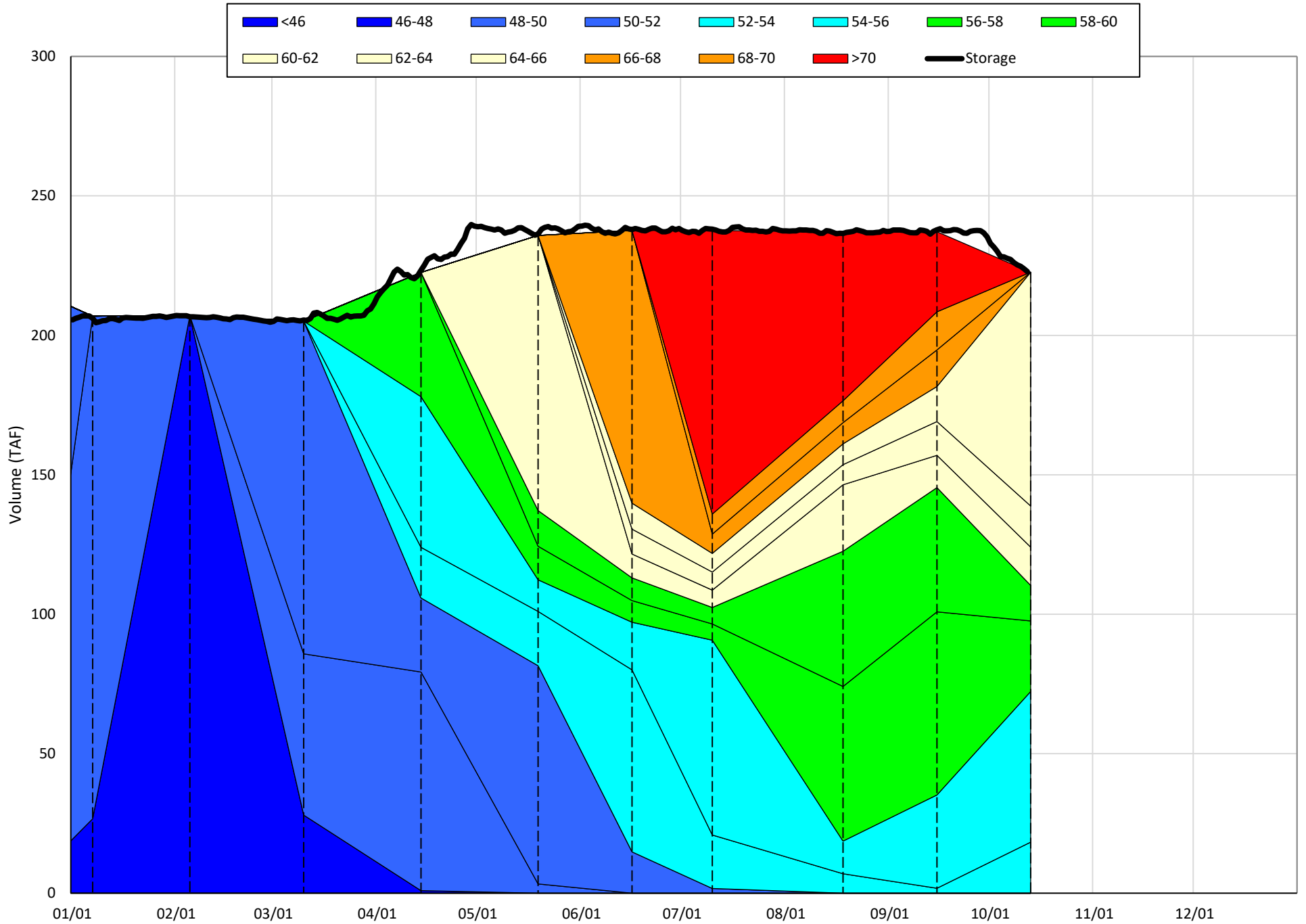
(Historic - Current) / Current

Whiskeytown Lake Isothermobaths & Cold Water Pool Statistics

2020

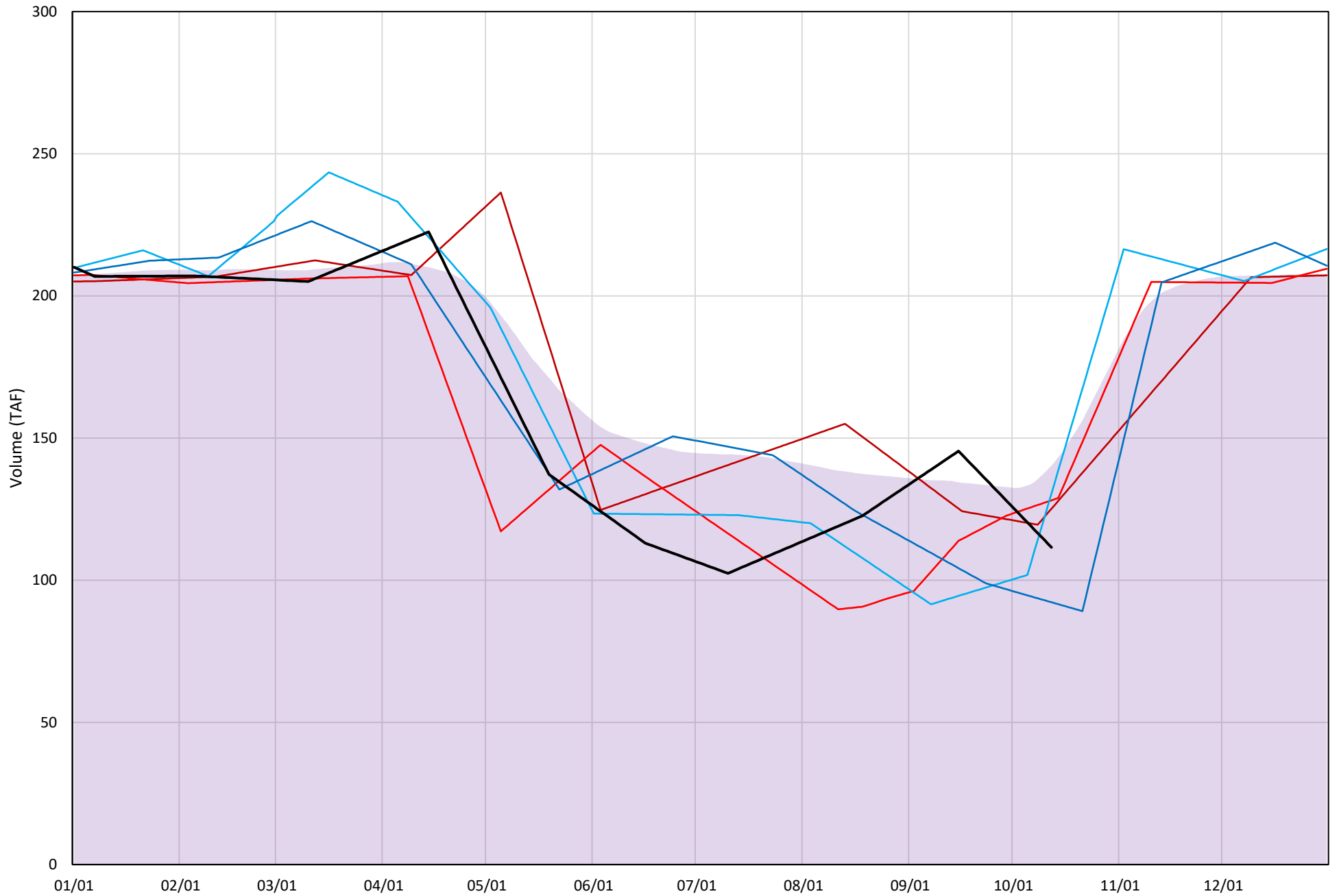
Page	Description
24	- Whiskeytown Lake Isothermobaths Plot
25	- Whiskeytown Lake Cold Water Pool Volume $\leq 60^{\circ}\text{F}$
26	- Whiskeytown Lake Cold Water Pool Volume $\leq 58^{\circ}\text{F}$
27	- Whiskeytown Lake Cold Water Pool Volume $\leq 56^{\circ}\text{F}$
28	- Whiskeytown Lake Cold Water Pool Volume $\leq 60^{\circ}\text{F}$ - Percent Exceedances
29	- Whiskeytown Lake Cold Water Pool Volume $\leq 58^{\circ}\text{F}$ - Percent Exceedances
30	- Whiskeytown Lake Cold Water Pool Volume $\leq 56^{\circ}\text{F}$ - Percent Exceedances
31	- Whiskeytown Lake Cold Water Pool Comparison by Year

Whiskeytown Lake Isothermobaths Plot - 2020



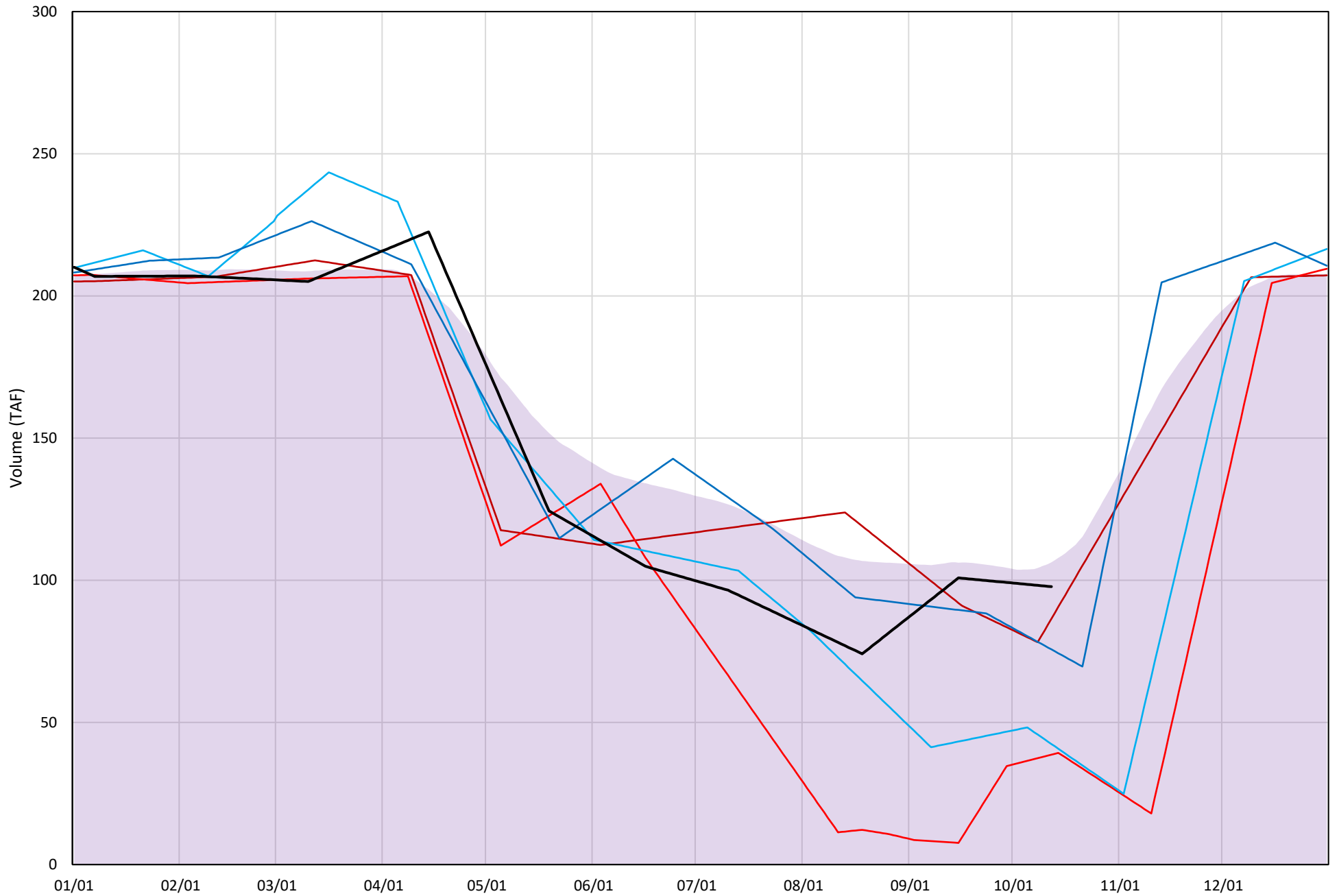
Whiskeytown Lake Cold Water Pool Volume $\leq 60^{\circ}\text{F}$

Avg (2000-2019) 2014 2015 2016 2019 2020



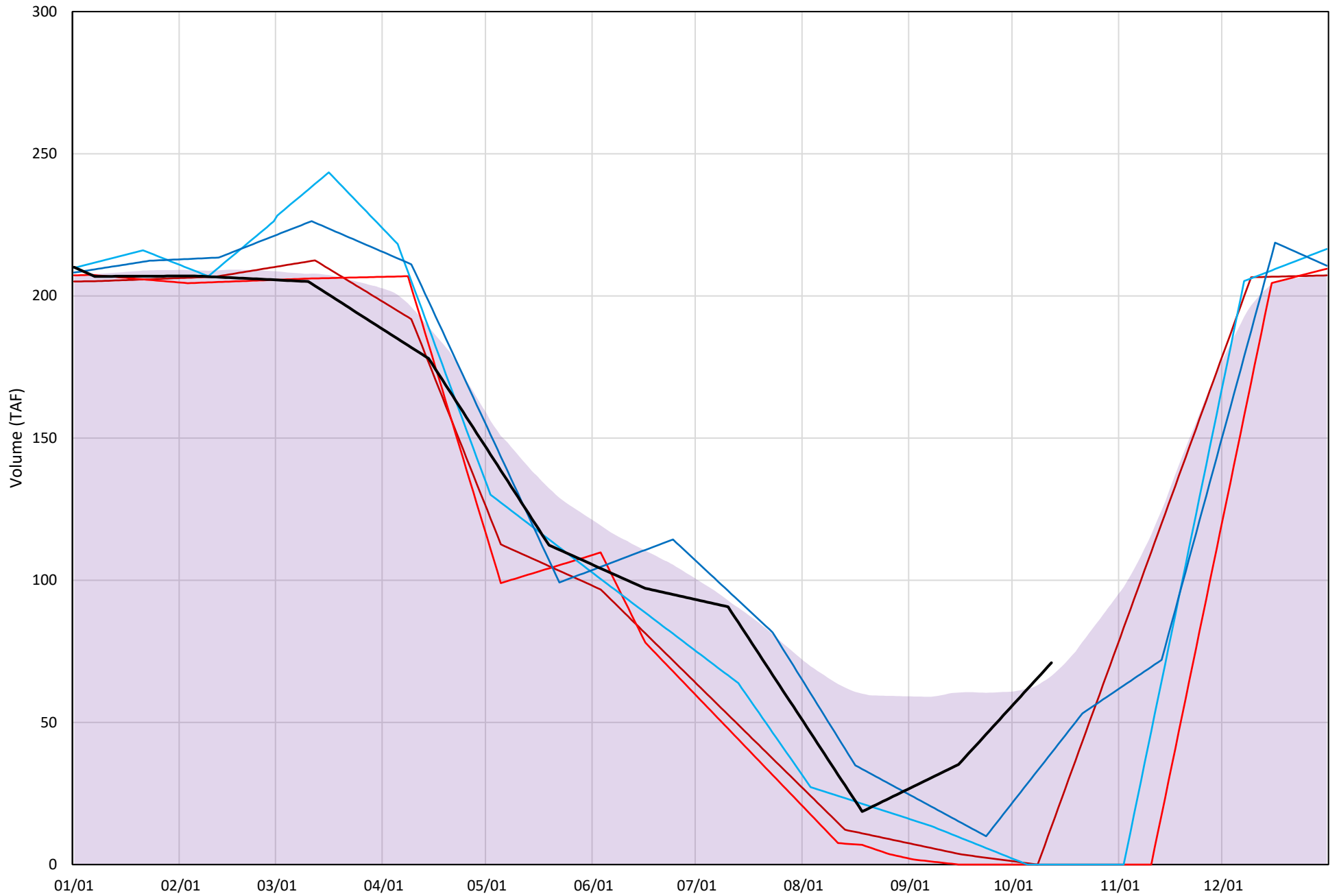
Whiskeytown Lake Cold Water Pool Volume $\leq 58^{\circ}\text{F}$

Avg (2000-2019) 2014 2015 2016 2019 2020

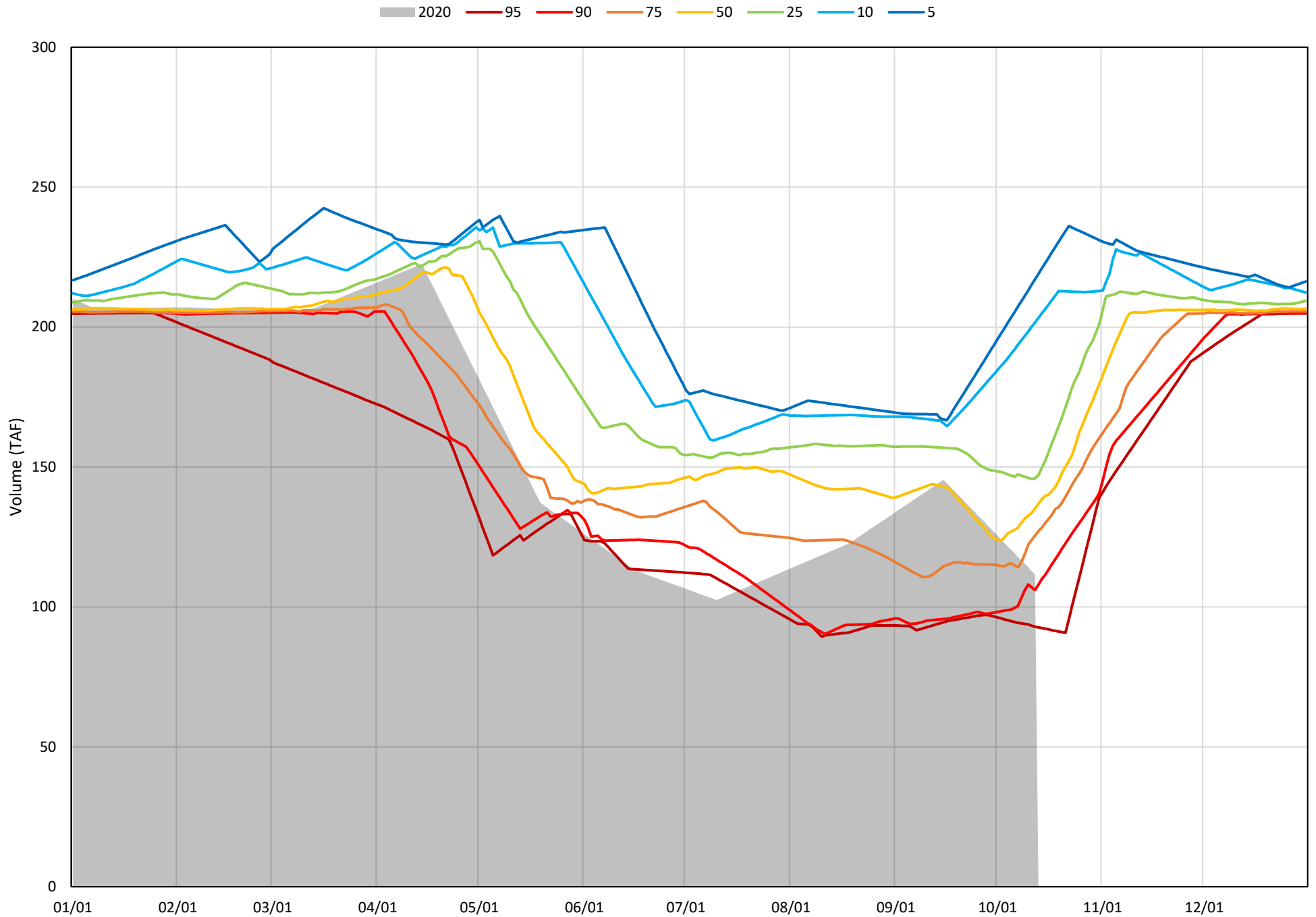


Whiskeytown Lake Cold Water Pool Volume $\leq 56^{\circ}\text{F}$

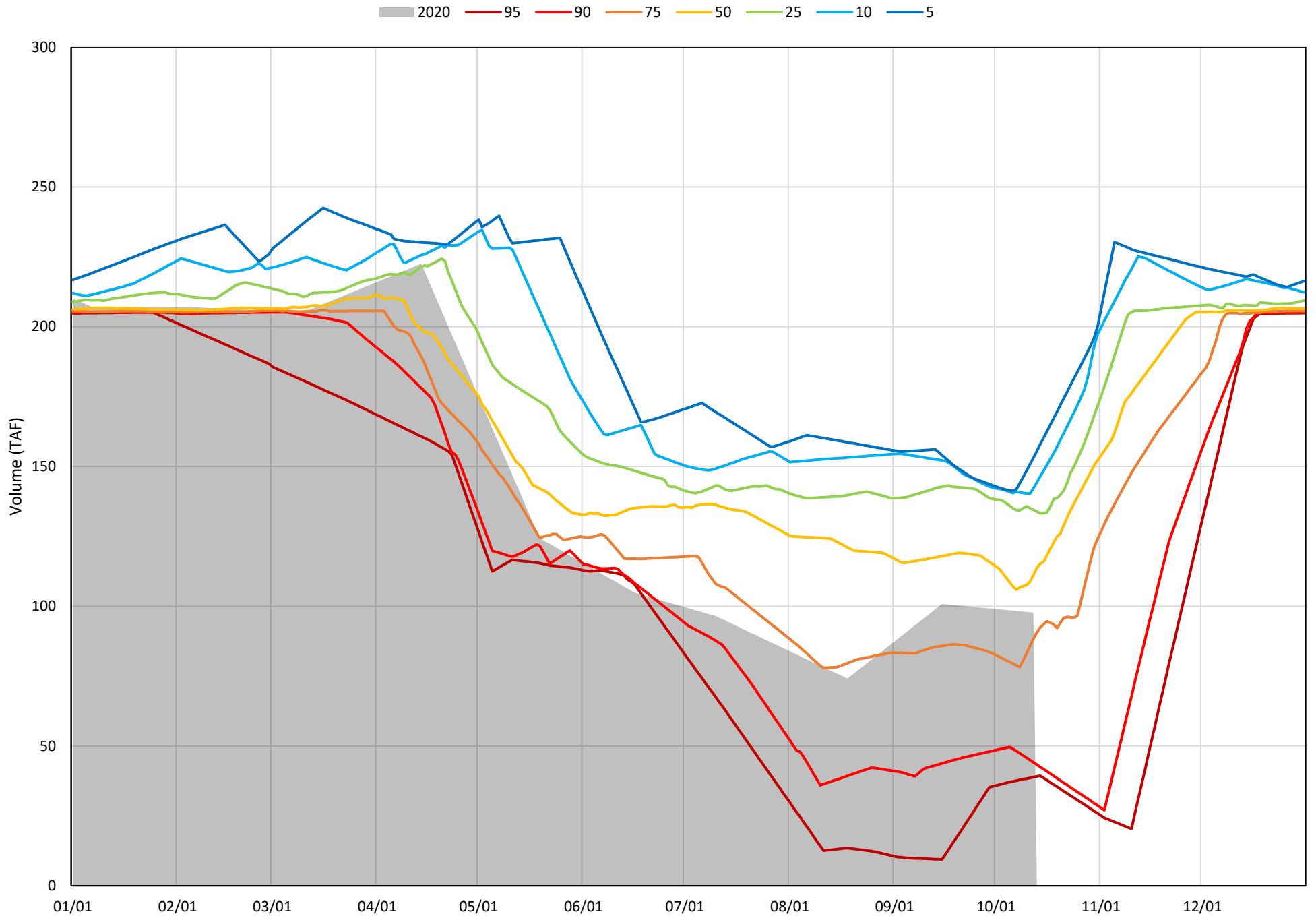
Avg (2000-2019) 2014 2015 2016 2019 2020



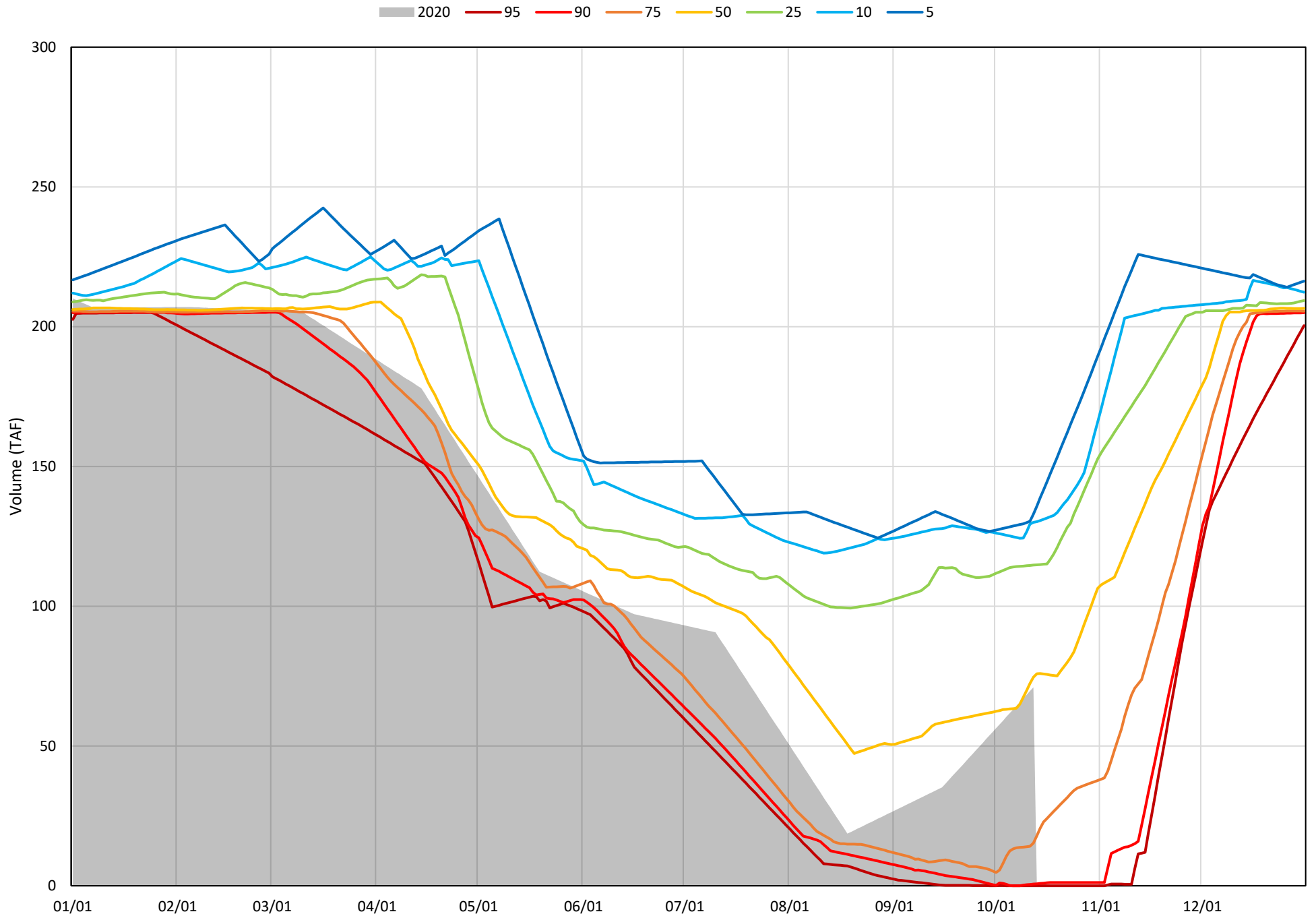
Whiskeytown Lake Cold Water Pool Volume $\leq 60^{\circ}\text{F}$ - Percent Exceedances (2000-2019)



Whiskeytown Lake Cold Water Pool Volume $\leq 58^{\circ}\text{F}$ - Percent Exceedances (2000-2019)



Whiskeytown Lake Cold Water Pool Volume $\leq 56^{\circ}\text{F}$ - Percent Exceedances (2000-2019)



Whiskeytown Cold Water Pool Comparison by Year (for Specified Date)

Oct-13 2020	Δ TAF				% Δ			
	≤60°	≤58°	≤56°	Abs. Avg.	≤60°	≤58°	≤56°	Abs. Avg.
2000	-7	-3	4	4	-6	-3	5	5
2001	28	38	53	40	25	39	74	46
2002	34	40	44	40	31	41	62	45
2003	31	42	60	44	28	43	84	52
2004	49	56	62	56	43	57	87	63
2005	4	-4	-50	19	3	-4	-70	26
2006	18	30	50	33	17	30	71	39
2007	34	45	3	27	30	46	5	27
2008	12	19	34	22	11	20	48	26
2009	16	13	-34	21	14	13	-48	25
2010	30	-38	-65	44	27	-39	-92	52
2011	15	22	4	14	13	23	6	14
2012	52	8	-17	26	46	8	-24	26
2013	106	34	43	61	95	35	60	63
2014	14	-11	-58	27	12	-11	-81	35
2015	17	-59	-71	49	15	-60	-100	58
2016	19	-55	-71	48	17	-57	-100	58
2017	94	3	7	35	85	3	10	32
2018	29	14	-59	34	26	14	-83	41
2019	-19	-22	-32	24	-17	-23	-45	28
2020	0	0	0	0	0	0	0	0

Historic - Current

(Historic - Current) / Current