

Northern CVP Water Temperature Report

October - 2019

| Page | Description |
|------|---|
| 1 | - Mean Daily Water Temperature, Release Flow Rates and Air Temperatures with Monthly Averages |
| 2 | - Redding 10-Day Forecasted Air Temperatures |
| 3 | - Sacramento River Mean Daily Water Temperature, Air Temperature and 10-Day Forecasted Air Temperature Plot - Water Temperature Measuring Station Details - Temperature Control Point Details |
| 4 | - Shasta Lake Isothermobaths Plot |
| 5 | - Trinity Lake Isothermobaths Plot |
| 6 | - Whiskeytown Lake Isothermobaths Plot |
| x | - TCD Configuration (External Link) |



All Data in this Report is Preliminary and Subject to Change

| DATE | Mean Daily Water Temperatures (°F) | | | | | | | | | | | | | | Mean Daily Release (CFS) | | | Mean Daily Air Temperatures (°F) | | | | |
|-------|------------------------------------|--------|------------------|------|------|------|------------------|------------------|------|------|------|------|--------|------------------|--------------------------|-------------------|---------------|----------------------------------|--------|------|------|---|
| | TCD ¹ | SHD | SPP ¹ | KWK | SAC | CCR | APR ⁴ | BSF ² | JLF | BND | RDB | IGO | LWS | NFH ³ | Shasta Generation | Spring Creek P.P. | Keswick Total | RDD | BSF | RDB | LWS | |
| Sep | 50.6 | 49.6 | 56.9 | 51.3 | 51.9 | 52.7 | 53.3 | 53.8 | 55.3 | 55.9 | 56.9 | 57.3 | 52.3 | - | 7354 | 496 | 8298 | 73.8 | 68.9 | 70.5 | - | |
| 10/01 | # - ? | 49.1 | 56.6 | 50.6 | 51.0 | 51.3 | 51.6 | 51.9 | 52.8 | 53.2 | 53.6 | 55.9 | 48.7 | 52.8 | 6511 | 622 | 7559 | 59.0 | 53.5 | 55.9 | - | |
| 10/02 | 49.7 | 49.1 | # - | 50.6 | ! | 51.4 | 51.7 | 52.1 | 53.0 | 53.4 | 53.8 | 56.1 | 48.9 | 52.8 | 5534 | 1238 | 6691 | 59.5 | 54.5 | 57.5 | - | |
| 10/03 | 49.7 | 49.0 | # - | 51.6 | ! | 52.1 | 52.5 | 52.9 | 53.9 | 54.2 | 54.4 | 56.2 | 48.8 | 53.4 | 4709 | 1613 | 6557 | 64.0 | 58.5 | 61.3 | - | |
| 10/04 | 49.6 | 48.9 | # - | 51.7 | 52.1 | 52.4 | 52.8 | 53.2 | 54.2 | 54.5 | 54.8 | 55.7 | 48.4 | 52.9 | 4410 | 1601 | 6552 | 61.0 | 56.0 | 60.3 | - | |
| 10/05 | 49.6 | 48.9 | # - | 51.6 | 52.1 | 52.6 | 53.1 | 53.5 | 54.3 | 54.7 | 55.0 | 55.7 | 48.6 | 52.5 | 4963 | 1173 | 6512 | 70.5 | 61.9 | 66.3 | - | |
| 10/06 | 50.0 | 49.3 | # - | 51.0 | 51.5 | 52.3 | 53.0 | 53.6 | 54.6 | 55.1 | 55.6 | 55.9 | 48.7 | 52.7 | 5763 | 647 | 6561 | 71.5 | 65.7 | 68.3 | - | |
| 10/07 | 50.0 | 49.3 | # - | 50.8 | 51.3 | 51.9 | 52.5 | 53.1 | 54.1 | 54.6 | 55.4 | 55.7 | 48.8 | 52.9 | 5494 | 883 | 6562 | 68.0 | 61.5 | 65.5 | - | |
| 10/08 | 50.0 | 49.3 | # - | 51.5 | 51.8 | 52.1 | 52.6 | 53.1 | 54.1 | 54.6 | 55.2 | 55.8 | 48.9 | 53.0 | 4607 | 1466 | 6559 | 68.0 | 63.3 | 66.7 | - | |
| 10/09 | 50.1 | 49.3 | # - | 51.9 | 52.1 | 52.3 | 52.6 | 52.8 | 53.6 | 54.0 | 54.3 | 55.1 | 48.2 | 52.1 | 4572 | 1510 | 6569 | 64.5 | 61.2 | 63.8 | - | |
| 10/10 | 49.9 | 49.1 | 55.7 | 51.4 | 51.7 | 52.0 | 52.2 | 52.3 | 52.9 | 53.1 | 53.1 | 54.9 | 48.2 | 50.3 | 4704 | 1363 | 6565 | 67.0 | 61.3 | 62.8 | - | |
| 10/11 | 49.8 | 49.2 | 55.5 | 51.2 | 51.3 | 51.9 | 52.1 | 52.3 | 52.9 | 53.1 | 53.3 | 54.7 | 47.9 | 49.7 | 4625 | 1527 | 6574 | 60.5 | 53.9 | 58.4 | - | |
| 10/12 | 50.4 | 49.5 | 55.3 | 51.4 | 51.6 | 52.0 | 52.2 | 52.4 | 52.9 | 53.2 | 53.4 | 54.4 | 47.6 | 49.9 | 4392 | 1568 | 6559 | 59.0 | 54.2 | 57.3 | - | |
| 10/13 | 50.3 | ? 49.5 | 55.1 | 51.3 | 51.6 | 52.2 | 52.5 | 52.7 | 53.3 | 53.6 | 53.7 | 54.4 | 47.5 | 50.5 | 4589 | 1296 | 6569 | 60.5 | 55.2 | 58.0 | - | |
| 10/14 | 50.7 | ? 50.0 | 55.0 | 51.3 | 51.5 | 51.9 | 52.2 | 52.5 | 53.1 | 53.4 | 53.6 | 54.3 | 47.6 | 50.7 | 6625 | 1347 | 8458 | 61.5 | 55.8 | 59.1 | - | |
| 10/15 | 50.5 | ? 50.0 | 54.8 | 51.3 | 51.5 | 51.8 | 52.0 | 52.2 | 52.9 | 53.2 | 53.4 | 54.1 | 47.5 | 50.8 | 6203 | 1286 | 8495 | 61.0 | 55.3 | 58.8 | - | |
| 10/16 | 50.6 | ? 49.8 | 54.7 | 51.4 | 51.5 | 51.9 | 52.1 | 52.2 | 52.7 | 53.0 | 53.2 | 54.0 | 47.6 | 50.7 | 8186 | 1475 | 7389 | 59.0 | 55.1 | 58.3 | - | |
| 10/17 | 50.3 | ? 49.8 | 54.7 | 51.6 | 51.9 | 52.4 | 52.7 | 53.0 | 53.8 | 54.1 | 54.0 | 54.3 | 48.4 | 51.9 | 8608 | 1454 | 6748 | 59.0 | 58.3 | 61.1 | - | |
| 10/18 | 50.5 | 49.8 | 54.5 | 51.6 | 51.9 | 52.3 | 52.6 | 52.9 | 53.5 | 53.9 | 54.2 | 54.2 | 48.3 | 52.4 | 10627 | 1837 | 8605 | 59.0 | 56.3 | 57.2 | - | |
| 10/19 | 50.6 | 49.8 | 54.3 | 51.5 | 51.6 | 52.0 | 52.3 | 52.6 | 53.4 | 53.9 | 54.2 | 54.3 | 48.9 | 52.9 | 10447 | 1833 | 8586 | 59.0 | 57.2 | 57.9 | - | |
| 10/20 | 50.6 | 49.8 | 54.1 | 51.5 | 51.8 | 52.2 | 52.4 | 52.6 | 53.1 | 53.3 | 53.5 | 53.6 | 48.2 | 51.8 | 8788 | 1940 | 7481 | 60.0 | 54.9 | 58.8 | - | |
| 10/21 | 50.3 | 49.8 | 54.2 | 51.8 | 52.1 | 52.6 | 52.8 | 53.0 | 53.7 | 54.0 | 54.3 | 53.9 | 48.7 | 52.5 | 5169 | 1774 | 6780 | 66.0 | 61.6 | 66.7 | - | |
| 10/22 | 50.8 | 50.1 | 53.9 | 51.5 | 51.9 | 52.6 | 53.0 | 53.4 | 54.1 | 54.5 | 54.8 | 54.2 | 48.2 | 53.1 | 6222 | 839 | 8561 | 72.0 | 66.1 | 72.2 | - | |
| 10/23 | 51.0 | ? 50.3 | 53.8 | 51.4 | 51.7 | 52.2 | ? 52.6 | ? 53.0 | 54.0 | 54.5 | 55.0 | 54.1 | 47.9 | 53.2 | 6719 | 739 | 8529 | 77.5 | 74.5 | 75.5 | - | |
| 10/24 | 51.0 | ? 50.3 | 53.8 | 51.5 | 51.8 | 52.3 | 52.5 | 52.7 | 53.3 | 53.6 | 53.8 | 53.8 | 47.1 | 52.0 | 6666 | 654 | 7376 | 71.0 | 67.3 | 69.9 | - | |
| 10/25 | 50.8 | 50.1 | 53.8 | 51.3 | 51.5 | 52.1 | 52.3 | 52.6 | 53.3 | 53.5 | 53.6 | 53.4 | 47.0 | 51.2 | 5870 | 701 | 6637 | 67.0 | 59.3 | 64.4 | - | |
| 10/26 | 51.3 | 50.4 | 53.8 | 51.4 | 51.6 | 52.0 | 52.3 | 52.6 | 53.3 | 53.5 | 53.5 | 53.4 | 47.1 | 50.9 | 7049 | 697 | 8497 | 64.0 | 60.6 | 65.0 | - | |
| 10/27 | 51.3 | 50.6 | 53.8 | 51.1 | 51.1 | 51.1 | 51.1 | 51.1 | 51.5 | 51.8 | 51.9 | 52.5 | 46.1 | 49.3 | 6922 | 935 | 8493 | 59.5 | 57.7 | 58.6 | - | |
| 10/28 | 50.8 | 50.0 | 54.0 | 51.1 | 51.2 | 51.4 | 51.3 | 51.3 | 51.4 | 51.4 | 50.9 | 52.5 | 45.5 | 47.6 | 6219 | 1015 | 7361 | 56.5 | 50.1 | 52.5 | - | |
| 10/29 | 51.3 | 50.5 | 54.1 | 51.0 | 51.3 | 51.3 | ? 51.2 | ? 51.1 | 51.2 | 51.3 | 51.0 | 52.1 | ? 45.5 | 46.6 | 5055 | 818 | 6685 | 50.5 | 49.1 | 51.0 | - | |
| 10/30 | 51.3 | 50.7 | 54.1 | 50.6 | 50.7 | 50.8 | 50.7 | 50.7 | 50.7 | ! | - | 50.3 | 52.1 | 44.6 | 45.4 | 5055 | 818 | 6685 | 54.5 | 45.7 | 50.6 | - |
| 10/31 | 51.0 | 50.2 | 54.0 | 51.0 | 51.2 | 51.4 | 51.2 | 51.0 | 50.9 | # | - | 50.3 | 52.1 | 44.5 | 44.7 | 5851 | 407 | 6912 | ↓ 52.5 | 46.5 | 49.8 | - |
| Oct | 50.5 | 49.7 | 54.5 | 51.3 | 51.6 | 52.0 | 52.2 | 52.5 | 53.1 | 53.6 | 53.6 | 54.3 | 47.7 | 51.1 | 6166 | 1196 | 7247 | 62.7 | 57.8 | 61.0 | - | |

| | | | |
|-----------|--------|-------|--------|
| Total CFS | 191154 | 37076 | 224667 |
| Total AF | 379146 | 73539 | 445618 |

Legend

- ? = 1-9 hours of data missing (Average includes estimations)
- ! = 10 or more hours of data missing (Average not calculated)
- # = Station out of service
- ↑ = Record high air temperature
- ↓ = Record low air temperature
- = Monthly Averages

Notes

- ¹ Temperatures are weighted averages based on individual penstock flow and temperature
Highlighted cells in the TCD column indicate a TCD change was made on that day
- ² Current control point (see page 3 for more details)
- ³ NFH is only reported in October, November and December
- ⁴ APR = Airport Road. This is a virtual site interpolated linearly between CCR and BSF based on distance.

| DATE | Redding (RDD) Daily Air Temperatures (°F) | | | | | | | | | | | | | | | | | | | | | | | | | | | | | | | | | | | | | | | | | |
|-------|---|----|------|-------------|----|------|-------|----|------|--------|----|------|--------|----|------|--------|----|------|--------|----|------|--------|----|------|--------|----|------|--------|----|------|--------|----|------|---------|----|------|----|----|------|----|----|------|
| | Actual | | | Forecasted | | | | | | | | | | | | | | | | | | | | | | | | | | | | | | | | | | | | | | |
| | Previous Day | | | Current Day | | | 1 Day | | | 2 Days | | | 3 Days | | | 4 Days | | | 5 Days | | | 6 Days | | | 7 Days | | | 8 Days | | | 9 Days | | | 10 Days | | | | | | | | |
| | ↓ | ↑ | Avg | ↓ | ↑ | Avg | ↓ | ↑ | Avg | ↓ | ↑ | Avg | ↓ | ↑ | Avg | ↓ | ↑ | Avg | ↓ | ↑ | Avg | ↓ | ↑ | Avg | ↓ | ↑ | Avg | ↓ | ↑ | Avg | ↓ | ↑ | Avg | ↓ | ↑ | Avg | | | | | | |
| 10/01 | 46 | 66 | 56.0 | 45 | 74 | 59.5 | 44 | 78 | 61.0 | 46 | 76 | 61.0 | 47 | 78 | 62.5 | 50 | 85 | 67.5 | 54 | 87 | 70.5 | 54 | 86 | 70.0 | 54 | 86 | 70.0 | 51 | 82 | 66.5 | 53 | 82 | 67.5 | 51 | 83 | 67.0 | 51 | 81 | 66.0 | 51 | 78 | 64.5 |
| 10/02 | 45 | 73 | 59.0 | 41 | 77 | 59.0 | 46 | 75 | 60.5 | 45 | 75 | 60.0 | 49 | 84 | 66.5 | 52 | 89 | 70.5 | 54 | 88 | 71.0 | 53 | 84 | 68.5 | 51 | 86 | 68.5 | 51 | 83 | 67.0 | 51 | 81 | 66.0 | 51 | 78 | 64.5 | 51 | 78 | 64.5 | | | |
| 10/03 | 41 | 78 | 59.5 | 51 | 75 | 63.0 | 43 | 76 | 59.5 | 48 | 84 | 66.0 | 53 | 89 | 71.0 | 54 | 90 | 72.0 | 54 | 86 | 70.0 | 53 | 83 | 68.0 | 53 | 87 | 70.0 | 52 | 82 | 67.0 | 52 | 82 | 67.0 | 54 | 78 | 66.0 | 54 | 78 | 66.0 | | | |
| 10/04 | 51 | 77 | 64.0 | 50 | 77 | 63.5 | 50 | 84 | 67.0 | 53 | 87 | 70.0 | 54 | 88 | 71.0 | 55 | 87 | 71.0 | 53 | 81 | 67.0 | 52 | 83 | 67.5 | 48 | 85 | 66.5 | 49 | 77 | 63.0 | 50 | 79 | 64.5 | 52 | 77 | 64.5 | 52 | 77 | 64.5 | | | |
| 10/05 | 46 | 76 | 61.0 | 57 | 84 | 70.5 | 53 | 89 | 71.0 | 53 | 90 | 71.5 | 52 | 88 | 70.0 | 50 | 82 | 66.0 | 49 | 83 | 66.0 | 47 | 82 | 64.5 | 51 | 86 | 68.5 | 48 | 78 | 63.0 | 52 | 78 | 65.0 | 53 | 79 | 66.0 | 53 | 79 | 66.0 | | | |
| 10/06 | 57 | 84 | 70.5 | 55 | 89 | 72.0 | 52 | 91 | 71.5 | 52 | 87 | 69.5 | 49 | 75 | 62.0 | 44 | 80 | 62.0 | 46 | 83 | 64.5 | 48 | 82 | 65.0 | 48 | 84 | 66.0 | 44 | 78 | 61.0 | 49 | 76 | 62.5 | 49 | 78 | 63.5 | 49 | 78 | 63.5 | | | |
| 10/07 | 55 | 88 | 71.5 | 46 | 90 | 68.0 | 52 | 84 | 68.0 | 49 | 72 | 60.5 | 46 | 76 | 61.0 | 43 | 80 | 61.5 | 45 | 80 | 62.5 | 47 | 78 | 62.5 | 54 | 80 | 67.0 | 53 | 76 | 64.5 | 50 | 79 | 64.5 | 48 | 79 | 63.5 | 48 | 79 | 63.5 | | | |
| 10/08 | 47 | 89 | 68.0 | 50 | 85 | 67.5 | 47 | 71 | 59.0 | 44 | 76 | 60.0 | 43 | 79 | 61.0 | 45 | 80 | 62.5 | 45 | 79 | 62.0 | 46 | 80 | 63.0 | 50 | 85 | 67.5 | 50 | 78 | 64.0 | 46 | 73 | 59.5 | 48 | 75 | 61.5 | 48 | 75 | 61.5 | | | |
| 10/09 | 48 | 88 | 68.0 | 57 | 73 | 65.0 | 45 | 78 | 61.5 | 43 | 80 | 61.5 | 45 | 77 | 61.0 | 45 | 78 | 61.5 | 46 | 80 | 63.0 | 47 | 79 | 63.0 | 51 | 79 | 65.0 | 52 | 67 | 59.5 | 51 | 71 | 61.0 | 46 | 75 | 60.5 | 46 | 75 | 60.5 | | | |
| 10/10 | 56 | 73 | 64.5 | 56 | 78 | 67.0 | 43 | 80 | 61.5 | 44 | 80 | 62.0 | 45 | 77 | 61.0 | 46 | 78 | 62.0 | 47 | 80 | 63.5 | 48 | 78 | 63.0 | 49 | 68 | 58.5 | 48 | 70 | 59.0 | 52 | 74 | 63.0 | 46 | 74 | 60.0 | 46 | 74 | 60.0 | | | |
| 10/11 | 56 | 78 | 67.0 | 46 | 80 | 63.0 | 44 | 79 | 61.5 | 45 | 78 | 61.5 | 46 | 80 | 63.0 | 46 | 80 | 63.0 | 47 | 80 | 63.5 | 48 | 76 | 62.0 | 49 | 78 | 63.5 | 48 | 73 | 60.5 | 49 | 76 | 62.5 | 44 | 74 | 59.0 | 44 | 74 | 59.0 | | | |
| 10/12 | 40 | 81 | 60.5 | 40 | 83 | 61.5 | 46 | 80 | 63.0 | 46 | 81 | 63.5 | 46 | 81 | 63.5 | 48 | 76 | 62.0 | 47 | 75 | 61.0 | 45 | 72 | 58.5 | 46 | 69 | 57.5 | 46 | 77 | 61.5 | 43 | 76 | 59.5 | 44 | 81 | 62.5 | 44 | 81 | 62.5 | | | |
| 10/13 | 38 | 80 | 59.0 | 43 | 81 | 62.0 | 41 | 82 | 61.5 | 43 | 81 | 62.0 | 45 | 77 | 61.0 | 46 | 74 | 60.0 | 46 | 71 | 58.5 | 46 | 71 | 58.5 | 51 | 75 | 63.0 | 52 | 84 | 68.0 | 53 | 80 | 66.5 | 52 | 78 | 65.0 | 52 | 78 | 65.0 | | | |
| 10/14 | 42 | 79 | 60.5 | 42 | 82 | 62.0 | 44 | 79 | 61.5 | 44 | 75 | 59.5 | 43 | 69 | 56.0 | 44 | 72 | 58.0 | 41 | 69 | 55.0 | 42 | 73 | 57.5 | 50 | 82 | 66.0 | 48 | 79 | 63.5 | 49 | 81 | 65.0 | 52 | 79 | 65.5 | 52 | 79 | 65.5 | | | |
| 10/15 | 40 | 83 | 61.5 | 43 | 80 | 61.5 | 45 | 75 | 60.0 | 45 | 69 | 57.0 | 43 | 70 | 56.5 | 44 | 69 | 56.5 | 43 | 74 | 58.5 | 48 | 82 | 65.0 | 55 | 86 | 70.5 | 53 | 84 | 68.5 | 53 | 82 | 67.5 | 54 | 79 | 66.5 | 54 | 79 | 66.5 | | | |
| 10/16 | 42 | 80 | 61.0 | 42 | 75 | 58.5 | 46 | 70 | 58.0 | 42 | 70 | 56.0 | 45 | 68 | 56.5 | 41 | 75 | 58.0 | 49 | 84 | 66.5 | 50 | 85 | 67.5 | 55 | 84 | 69.5 | 54 | 82 | 68.0 | 52 | 78 | 65.0 | 47 | 77 | 62.0 | 47 | 77 | 62.0 | | | |
| 10/17 | 41 | 77 | 59.0 | 50 | 70 | 60.0 | 41 | 71 | 56.0 | 45 | 67 | 56.0 | 42 | 73 | 57.5 | 47 | 84 | 65.5 | 50 | 86 | 68.0 | 49 | 84 | 66.5 | 52 | 86 | 69.0 | 49 | 82 | 65.5 | 50 | 81 | 65.5 | 49 | 78 | 63.5 | 49 | 78 | 63.5 | | | |
| 10/18 | 47 | 71 | 59.0 | 46 | 73 | 59.5 | 45 | 71 | 58.0 | 42 | 74 | 58.0 | 48 | 83 | 65.5 | 49 | 86 | 67.5 | 50 | 83 | 66.5 | 49 | 82 | 65.5 | 47 | 88 | 67.5 | 49 | 80 | 64.5 | 46 | 77 | 61.5 | 45 | 75 | 60.0 | 45 | 75 | 60.0 | | | |
| 10/19 | 46 | 72 | 59.0 | 54 | 72 | 63.0 | 42 | 75 | 58.5 | 48 | 84 | 66.0 | 51 | 85 | 68.0 | 52 | 84 | 68.0 | 50 | 84 | 67.0 | 48 | 85 | 66.5 | 49 | 89 | 69.0 | 52 | 82 | 67.0 | 47 | 76 | 61.5 | 43 | 75 | 59.0 | 43 | 75 | 59.0 | | | |
| 10/20 | 50 | 68 | 59.0 | 43 | 74 | 58.5 | 50 | 84 | 67.0 | 54 | 87 | 70.5 | 53 | 84 | 68.5 | 51 | 85 | 68.0 | 48 | 86 | 67.0 | 47 | 82 | 64.5 | 48 | 80 | 64.0 | 45 | 72 | 58.5 | 39 | 72 | 55.5 | 40 | 69 | 54.5 | 40 | 69 | 54.5 | | | |
| 10/21 | 43 | 77 | 60.0 | 50 | 84 | 67.0 | 53 | 87 | 70.0 | 58 | 86 | 72.0 | 53 | 85 | 69.0 | 49 | 86 | 67.5 | 48 | 80 | 64.0 | 44 | 72 | 58.0 | 42 | 73 | 57.5 | 42 | 71 | 56.5 | 37 | 70 | 53.5 | 40 | 71 | 55.5 | 40 | 71 | 55.5 | | | |
| 10/22 | 48 | 84 | 66.0 | 58 | 87 | 72.5 | 56 | 85 | 70.5 | 53 | 85 | 69.0 | 50 | 86 | 68.0 | 49 | 83 | 66.0 | 46 | 75 | 60.5 | 40 | 73 | 56.5 | 47 | 82 | 64.5 | 45 | 74 | 59.5 | 42 | 74 | 58.0 | 44 | 72 | 58.0 | 44 | 72 | 58.0 | | | |
| 10/23 | 56 | 88 | 72.0 | 71 | 85 | 78.0 | 53 | 86 | 69.5 | 49 | 87 | 68.0 | 50 | 85 | 67.5 | 46 | 75 | 60.5 | 41 | 75 | 58.0 | 40 | 76 | 58.0 | 44 | 85 | 64.5 | 46 | 77 | 61.5 | 44 | 76 | 60.0 | 44 | 74 | 59.0 | 44 | 74 | 59.0 | | | |
| 10/24 | 69 | 86 | 77.5 | 70 | 87 | 78.5 | 49 | 88 | 68.5 | 50 | 82 | 66.0 | 45 | 70 | 57.5 | 40 | 76 | 58.0 | 40 | 78 | 59.0 | 41 | 77 | 59.0 | 42 | 82 | 62.0 | 44 | 77 | 60.5 | 43 | 75 | 59.0 | 44 | 72 | 58.0 | 44 | 72 | 58.0 | | | |
| 10/25 | 54 | 88 | 71.0 | 47 | 88 | 67.5 | 50 | 82 | 66.0 | 43 | 68 | 55.5 | 38 | 73 | 55.5 | 39 | 74 | 56.5 | 38 | 75 | 56.5 | 38 | 77 | 57.5 | 44 | 83 | 63.5 | 48 | 77 | 62.5 | 43 | 75 | 59.0 | 43 | 73 | 58.0 | 43 | 73 | 58.0 | | | |
| 10/26 | 45 | 89 | 67.0 | 46 | 82 | 64.0 | 45 | 69 | 57.0 | 37 | 73 | 55.0 | 39 | 73 | 56.0 | 37 | 73 | 55.0 | 38 | 77 | 57.5 | 40 | 79 | 59.5 | 44 | 81 | 62.5 | 43 | 75 | 59.0 | 41 | 74 | 57.5 | 42 | 73 | 57.5 | 42 | 73 | 57.5 | | | |
| 10/27 | 46 | 82 | 64.0 | 52 | 68 | 60.0 | 37 | 73 | 55.0 | 38 | 68 | 53.0 | 36 | 69 | 52.5 | 36 | 73 | 54.5 | 41 | 78 | 59.5 | 42 | 80 | 61.0 | 44 | 82 | 63.0 | 43 | 76 | 59.5 | 42 | 74 | 58.0 | 42 | 68 | 55.0 | 42 | 68 | 55.0 | | | |
| 10/28 | 52 | 67 | 59.5 | 52 | 72 | 62.0 | 37 | 63 | 50.0 | 35 | 68 | 51.5 | 35 | 74 | 54.5 | 39 | 76 | 57.5 | 42 | 76 | 59.0 | 42 | 77 | 59.5 | 42 | 82 | 62.0 | 45 | 76 | 60.5 | 43 | 73 | 58.0 | 44 | 70 | 57.0 | 44 | 70 | 57.0 | | | |
| 10/29 | 42 | 71 | 56.5 | 37 | 65 | 51.0 | 33 | 69 | 51.0 | 35 | 73 | 54.0 | 40 | 77 | 58.5 | 41 | 76 | 58.5 | 41 | 77 | 59.0 | 42 | 78 | 60.0 | 45 | 82 | 63.5 | 46 | 76 | 61.0 | 43 | 73 | 58.0 | 44 | 69 | 56.5 | 44 | 69 | 56.5 | | | |
| 10/30 | 36 | 65 | 50.5 | 48 | 69 | 58.5 | 34 | 75 | 54.5 | 40 | 79 | 59.5 | 43 | 78 | 60.5 | 42 | 80 | 61.0 | 44 | 80 | 62.0 | 44 | 79 | 61.5 | 44 | 81 | 62.5 | 46 | 74 | 60.0 | 42 | 71 | 56.5 | 42 | 68 | 55.0 | 42 | 68 | 55.0 | | | |
| 10/31 | 38 | 71 | 54.5 | 32 | 74 | 53.0 | 35 | 77 | 56.0 | 41 | 79 | 60.0 | 44 | 78 | 61.0 | 44 | 81 | 62.5 | 44 | 80 | 62.0 | 44 | 79 | 61.5 | 47 | 79 | 63.0 | 45 | 70 | 57.5 | 42 | 65 | 53.5 | 43 | 64 | 53.5 | 43 | 64 | 53.5 | | | |

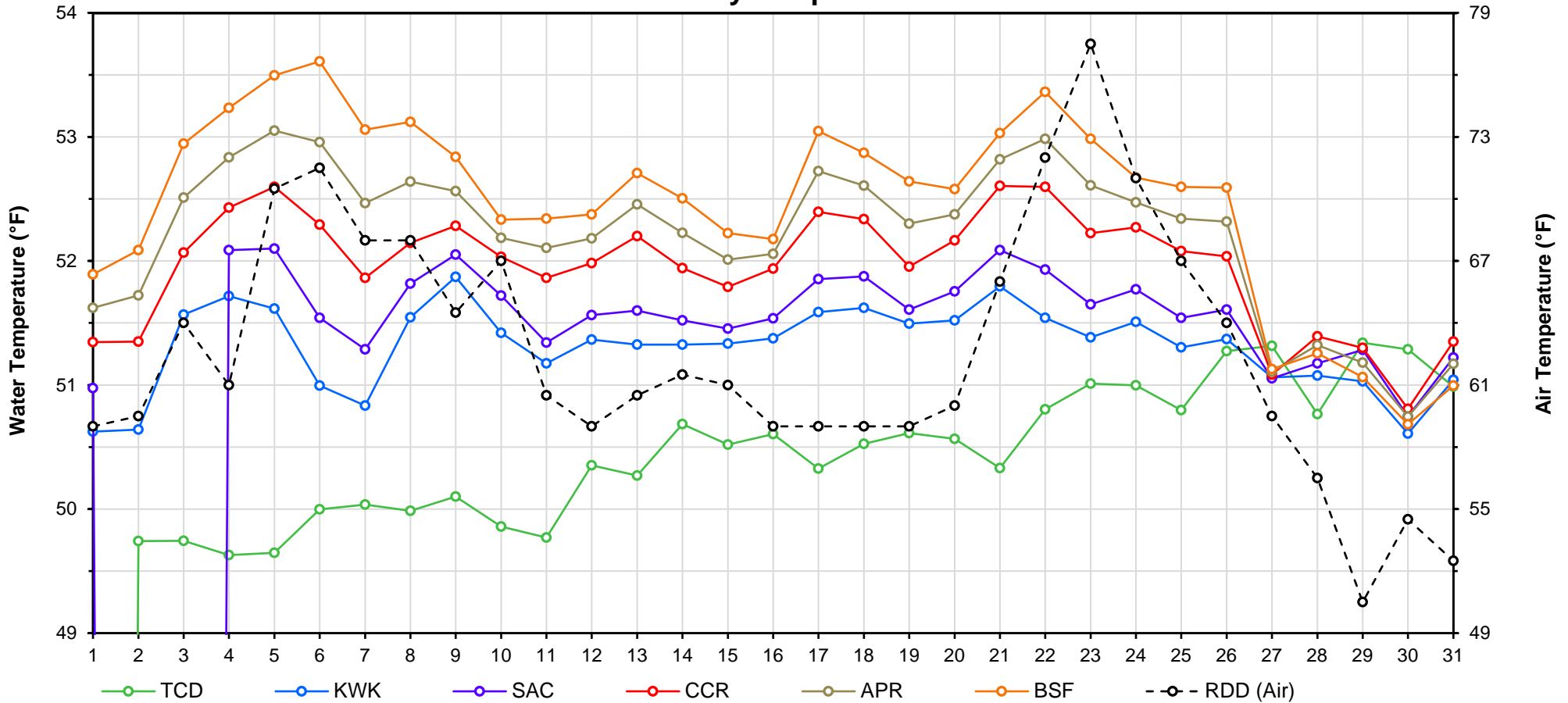
Web Links

- [10-Day Min/Max Forecast](#)
- [Previous Days Min/Max Actuals](#)

Legend

- NR = Forecasted temperatures not recorded
- 100** = Previous day actual temperatures in red and bolded indicate a record temperature for that date

Mean Daily Temperatures



| Station Details | | | |
|------------------|------------------|--|----------------------------|
| Code | Body of Water | Location ¹ | CDEC Link |
| TCD | N/A | Shasta Power Plant | N/A |
| SHD | Sacramento River | 0.3 miles downstream of Shasta Power Plant | Click Here |
| SPP | N/A | Spring Creek Power Plant | N/A |
| KWK | Sacramento River | 0.8 miles downstream of Keswick Dam | Click Here |
| SAC | Sacramento River | 4.8 miles downstream of Keswick Dam | Click Here |
| CCR | Sacramento River | 9.7 miles downstream of Keswick Dam | Click Here |
| BSF | Sacramento River | 25 miles downstream of Keswick Dam | Click Here |
| JLF | Sacramento River | 34 miles downstream of Keswick Dam | Click Here |
| BND | Sacramento River | 41 miles downstream of Keswick Dam | Click Here |
| RDB | Sacramento River | 58 miles downstream of Keswick Dam | Click Here |
| IGO | Clear Creek | 7.3 miles downstream of Whiskeytown Dam | Click Here |
| LWS | Trinity River | 1.1 miles downstream of Lewiston Dam | Click Here |
| DGC ² | Trinity River | 19 miles downstream of Lewiston Dam | Click Here |
| NFH ³ | Trinity River | 38 miles downstream of Lewiston Dam | Click Here |

| Temperature Control Point | | |
|---------------------------|-------------|------------------|
| Point | Temp. (°F) | Begin Date |
| BSF | 56.0 | 5/15/2019 |
| | | |
| | | |
| | | |
| | | |
| | | |
| | | |
| | | |

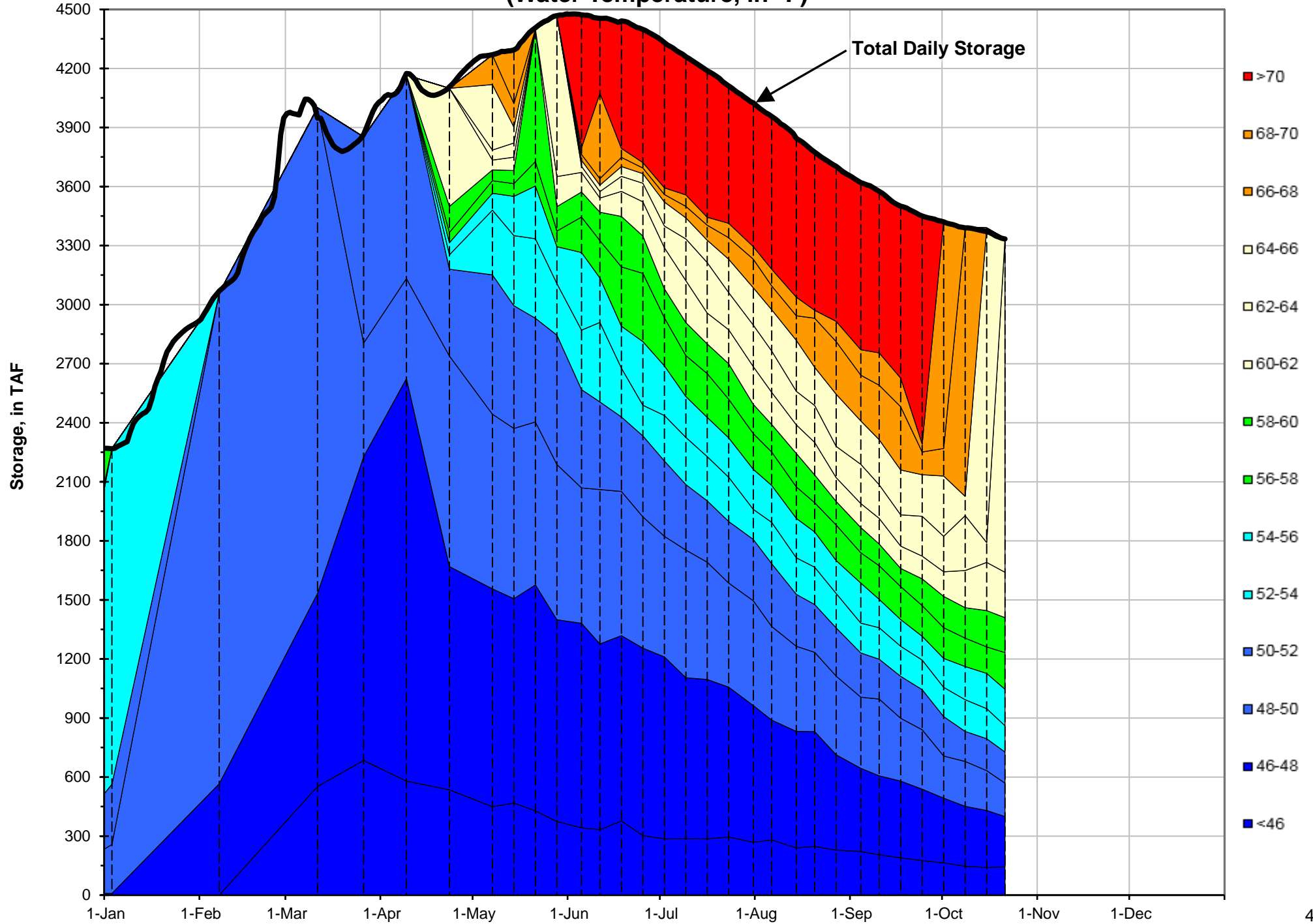
Notes

¹ Distances are approximate

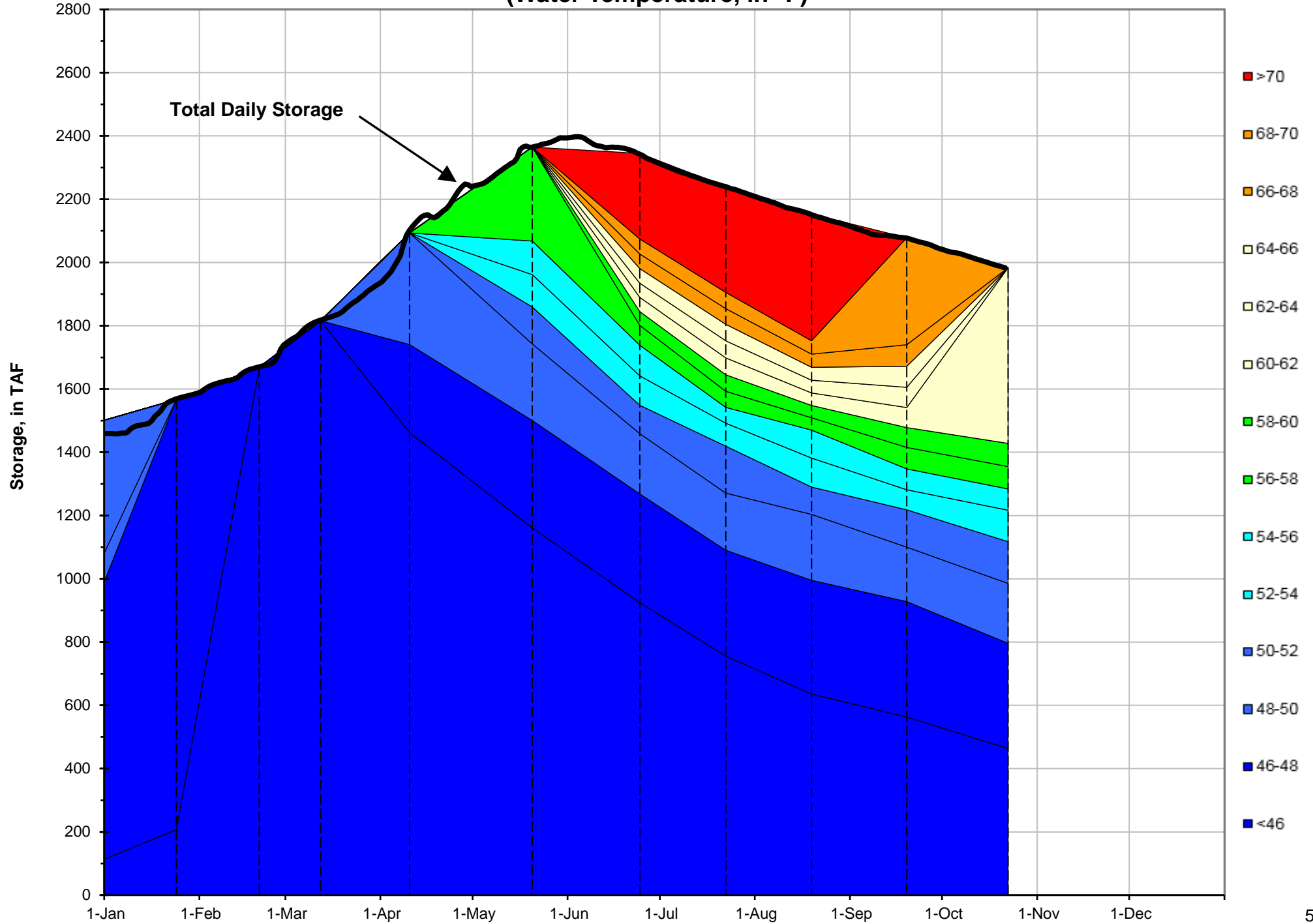
² DGC is only reported in September

³ NFH is only reported in October, November and December

Shasta Lake Isothermobaths - 2019 (Water Temperature, in °F)



Trinity Lake Isothermobaths - 2019 (Water Temperature, in °F)



Whiskeytown Lake Isothermobaths - 2019 (Water Temperature, in °F)

