

# Northern CVP Water Temperature Report

## October - 2018

Page	Description
1	- Mean Daily Water Temperature, Release Flow Rates and Air Temperatures with Monthly Averages
2	- Redding 10-Day Forecasted Air Temperatures
3	- Sacramento River Mean Daily Water Temperature, Air Temperature and 10-Day Forecasted Air Temperature Plot - Water Temperature Measuring Station Details - Temperature Control Point Details
4	- Daily Maximum and 7DADM
5	- Shasta Lake Isothermobaths Plot
6	- Trinity Lake Isothermobaths Plot
7	- Whiskeytown Lake Isothermobaths Plot
x	- <a href="#">TCD Configuration</a> (External Link)



All Data in this Report is Preliminary and Subject to Change

DATE	Mean Daily Water Temperatures (°F)													Mean Daily Release (CFS)			Mean Daily Air Temperatures (°F)						
	TCD <sup>1</sup>	SHD	SPP <sup>1</sup>	KWK	SAC	CCR	BSF <sup>2</sup>	JLF	BND	RDB	IGO	LWS	NFH <sup>3</sup>	Shasta Generation	Spring Creek P.P.	Keswick Total	RDD	BSF	RDB	LWS			
Sep	51.6	50.8	56.7	51.8	52.4	52.9	54.2	55.3	55.6	56.7	56.5	51.8	-	7296	239	8089	74.1	68.1	70.5	63.7			
10/01	52.1	51.3	56.8	51.9	52.2	52.6	53.4	54.7	54.9	56.1	54.0	50.8	55.4	6210	380	7551	65.5	62.1	65.4	55.3			
10/02	52.3	51.4	56.8	52.0	52.5	52.9	53.8	54.8	54.9	55.5	54.9	51.2	55.9	6991	528	7586	70.5	65.8	67.4	61.2			
10/03	52.6	51.6	56.9	52.5	52.9	53.3	54.3	55.4	55.4	56.3	55.3	51.1	57.0	6099	1162	7588	69.0	63.8	65.8	61.5			
10/04	52.6	51.7	56.9	52.8	53.3	53.8	55.1	56.1	56.3	56.9	56.1	51.2	57.4	6396	450	7641	67.0	64.1	64.1	59.4			
10/05	52.8	51.9	56.9	53.1	53.5	53.8	55.0	55.9	56.2	57.1	55.0	50.4	55.0	5599	1191	7718	66.5	63.5	64.8	51.9			
10/06	52.6	51.7	57.0	53.2	53.8	54.2	55.2	55.9	56.1	56.9	55.2	51.1	55.2	5261	1260	7705	66.5	62.9	65.3	56.2			
10/07	52.9	52.1	57.0	53.0	53.8	54.2	55.2	55.7	55.9	56.6	55.0	50.8	55.8	6466	311	7725	69.5	65.2	68.0	53.8			
10/08	53.1	52.3	57.0	52.8	53.5	54.0	55.0	55.7	56.0	56.9	55.4	50.8	55.2	6849	310	7715	72.0	67.7	70.7	56.7			
10/09	53.1	52.3	57.0	53.0	53.6	54.1	55.3	56.0	56.3	57.2	55.8	50.9	55.7	6994	242	7710	75.0	68.5	69.6	57.9			
10/10	53.3	52.5	!	-	53.2	53.5	54.0	54.9	55.4	55.7	56.6	55.3	50.5	6732	-	7708	71.0	61.9	64.6	51.8			
10/11	53.5	52.8	#	-	53.5	53.6	54.0	54.8	55.2	55.4	56.1	55.2	50.3	6496	-	7712	70.5	62.3	65.0	51.8			
10/12	53.5	52.9	?	57.1	53.6	53.7	54.1	54.8	55.2	55.3	56.0	55.3	50.2	7206	385	7755	68.0	60.0	66.4	52.7			
10/13	53.7	52.8	57.1	53.7	53.8	54.2	54.8	55.2	55.3	55.9	55.4	50.1	52.7	6424	415	7761	67.5	64.0	69.2	54.3			
10/14	54.0	53.2	57.7	53.7	53.7	53.9	54.5	54.8	55.0	55.6	55.1	50.0	52.1	7124	14	7767	71.0	67.0	67.3	50.3			
10/15	54.1	53.6	57.4	53.6	53.6	53.8	54.2	54.3	54.2	54.6	55.1	49.9	51.2	6715	14	7757	67.0	56.1	62.0	50.0			
10/16	54.0	53.3	57.3	53.9	53.9	54.1	?	54.5	54.6	54.6	54.9	55.4	49.7	6796	14	7763	65.0	59.1	65.8	51.8			
10/17	54.1	53.5	57.3	53.7	53.8	54.1	54.9	55.1	55.2	55.6	55.6	49.6	51.9	7268	14	7820	64.5	58.8	61.5	52.6			
10/18	54.4	53.7	57.3	53.9	53.9	54.1	54.7	54.9	55.0	55.5	55.4	49.0	52.3	6184	163	7675	64.0	57.3	60.6	52.4			
10/19	54.4	53.8	57.2	54.1	54.1	54.4	54.9	55.1	55.1	55.6	55.7	48.4	52.4	6953	458	7503	68.0	59.9	63.0	53.3			
10/20	54.5	54.0	57.2	54.4	54.4	54.7	55.2	55.3	55.4	55.8	55.8	?	48.4	7022	184	7496	67.0	59.8	64.0	52.9			
10/21	54.7	54.1	57.8	54.4	54.4	54.8	?	55.3	55.5	55.6	56.0	55.6	#	-	51.8	6955	28	7506	64.0	57.7	61.6	-	
10/22	54.8	54.2	57.5	54.4	54.4	54.7	55.1	55.3	55.4	55.9	55.6	#	-	51.6	7035	16	7576	63.5	56.4	59.8	-		
10/23	54.9	54.3	57.4	54.5	54.4	54.5	54.9	55.0	55.0	55.4	55.5	#	-	51.1	6429	54	6455	58.0	53.6	55.5	-		
10/24	55.3	54.5	57.5	?	54.5	54.5	54.8	55.2	55.3	55.5	55.8	#	-	52.5	4889	41	6143	61.0	55.9	57.7	-		
10/25	55.4	54.4	57.8	54.7	54.7	55.0	55.5	55.6	55.6	56.0	56.0	#	-	52.6	5503	17	6276	65.5	58.4	62.6	-		
10/26	54.6	54.3	57.6	54.9	54.9	55.2	55.7	55.9	55.9	56.4	56.2	#	-	53.1	5812	14	6481	66.0	59.7	63.0	-		
10/27	54.2	53.7	57.7	55.0	55.0	55.3	55.9	56.1	56.2	56.6	56.2	#	-	53.1	5485	14	6485	65.0	59.9	62.9	-		
10/28	54.2	53.5	57.6	54.3	54.4	54.7	?	55.7	56.2	56.4	56.8	#	-	53.4	5293	14	6483	64.0	59.3	60.4	-		
10/29	54.4	53.8	57.7	54.0	54.0	54.2	?	54.7	55.0	55.1	55.9	?	55.8	#	-	52.7	6345	14	6479	59.0	55.3	60.5	-
10/30	54.3	54.1	57.6	54.0	53.9	54.1	?	54.4	54.5	54.5	54.9	#	-	50.8	5865	14	6474	66.0	60.3	62.8	-		
10/31	?	54.5	?	53.7	57.6	53.9	53.8	54.0	54.4	54.5	54.7	55.8	#	-	49.7	6086	18	6481	67.5	60.0	64.5	-	
Oct	53.8	53.1	57.3	53.7	53.9	54.2	54.9	55.3	55.4	56.0	55.5	50.2	53.3	6370	267	7306	66.6	60.8	63.9	54.4			

Total CFS	197482	7739	226495
Total AF	391697	15350	449244

Legend

- ? = 1-9 hours of data missing (Average includes estimations)
- ! = 10 or more hours of data missing (Average not calculated)
- # = Station out of service
- ↑ = Record high air temperature
- ↓ = Record low air temperature
- = Monthly Averages

Notes

- <sup>1</sup> Temperatures are weighted averages based on individual penstock flow and temperature
- Highlighted cells in the TCD column indicate a TCD change was made on that day
- <sup>2</sup> Current control point (see page 3 for more details)
- <sup>3</sup> NFH is only reported in October, November and December

D A T E	Redding (RDD) Daily Air Temperatures (°F)																																			
	Actual			Forecasted																																
	Previous Day			Current Day			1 Day			2 Days			3 Days			4 Days			5 Days			6 Days			7 Days			8 Days			9 Days			10 Days		
	↓	↑	Avg	↓	↑	Avg	↓	↑	Avg	↓	↑	Avg	↓	↑	Avg	↓	↑	Avg	↓	↑	Avg	↓	↑	Avg	↓	↑	Avg	↓	↑	Avg	↓	↑	Avg	↓	↑	Avg
10/01	58	79	68.5	61	74	67.5	52	74	63.0	50	79	64.5	51	77	64.0	47	80	63.5	49	81	65.0	47	83	65.0	52	80	66.0	49	75	62.0	48	74	61.0	52	77	64.5
10/02	60	71	65.5	61	77	69.0	52	78	65.0	52	74	63.0	47	77	62.0	47	78	62.5	48	80	64.0	46	82	64.0	48	74	61.0	48	72	60.0	47	77	62.0	49	76	62.5
10/03	61	80	70.5	58	77	67.5	54	73	63.5	48	76	62.0	51	79	65.0	50	79	64.5	49	82	65.5	48	77	62.5	52	75	63.5	46	74	60.0	47	78	62.5	47	81	64.0
10/04	57	81	69.0	63	72	67.5	49	77	63.0	50	79	64.5	50	79	64.5	47	81	64.0	46	79	62.5	43	78	60.5	53	84	68.5	52	82	67.0	49	81	65.0	50	81	65.5
10/05	62	72	67.0	59	75	67.0	49	78	63.5	51	79	65.0	51	81	66.0	45	78	61.5	44	78	61.0	42	80	61.0	53	85	69.0	51	82	66.5	51	82	66.5	50	75	62.5
10/06	57	76	66.5	54	78	66.0	62	79	70.5	51	82	66.5	49	79	64.0	47	77	62.0	44	78	61.0	45	81	63.0	51	86	68.5	51	82	66.5	52	79	65.5	51	77	64.0
10/07	53	80	66.5	59	80	69.5	53	82	67.5	53	81	67.0	51	77	64.0	47	79	63.0	48	84	66.0	51	85	68.0	52	88	70.0	52	81	66.5	52	81	66.5	50	81	65.5
10/08	58	81	69.5	59	83	71.0	54	82	68.0	51	78	64.5	47	79	63.0	49	84	66.5	51	87	69.0	51	84	67.5	51	86	68.5	51	81	66.0	51	78	64.5	52	78	65.0
10/09	58	86	72.0	66	82	74.0	50	77	63.5	46	79	62.5	46	82	64.0	50	85	67.5	51	84	67.5	50	82	66.0	50	87	68.5	50	82	66.0	50	79	64.5	50	79	64.5
10/10	65	85	75.0	63	79	71.0	47	79	63.0	47	83	65.0	51	87	69.0	52	85	68.5	51	84	67.5	51	86	68.5	53	88	70.5	51	82	66.5	50	81	65.5	50	78	64.0
10/11	62	80	71.0	61	80	70.5	50	83	66.5	50	88	69.0	52	85	68.5	49	84	66.5	47	86	66.5	48	84	66.0	49	86	67.5	49	81	65.0	48	80	64.0	49	78	63.5
10/12	60	81	70.5	50	85	67.5	55	89	72.0	56	84	70.0	52	83	67.5	49	86	67.5	51	83	67.0	53	83	68.0	51	87	69.0	50	82	66.0	49	80	64.5	49	77	63.0
10/13	49	87	68.0	50	89	69.5	55	82	68.5	47	82	64.5	50	86	68.0	50	85	67.5	52	84	68.0	53	85	69.0	52	88	70.0	50	81	65.5	49	79	64.0	48	75	61.5
10/14	46	89	67.5	48	81	64.5	49	83	66.0	51	86	68.5	51	84	67.5	50	84	67.0	51	87	69.0	52	86	69.0	50	86	68.0	48	78	63.0	48	76	62.0	46	70	58.0
10/15	63	79	71.0	60	81	70.5	54	85	69.5	52	84	68.0	52	84	68.0	52	88	70.0	53	87	70.0	53	84	68.5	50	83	66.5	50	75	62.5	50	68	59.0	51	71	61.0
10/16	50	84	67.0	45	86	65.5	51	84	67.5	50	85	67.5	52	89	70.5	52	89	70.5	51	85	68.0	49	81	65.0	50	82	66.0	50	78	64.0	52	75	63.5	49	77	63.0
10/17	41	89	65.0	46	84	65.0	50	85	67.5	52	89	70.5	53	86	69.5	51	83	67.0	51	82	66.5	52	80	66.0	51	78	64.5	51	78	64.5	51	77	64.0	48	77	62.5
10/18	44	85	64.5	46	85	65.5	49	89	69.0	50	86	68.0	51	83	67.0	50	80	65.0	51	74	62.5	52	73	62.5	52	74	63.0	53	78	65.5	54	77	65.5	49	70	59.5
10/19	44	84	64.0	45	88	66.5	49	86	67.5	49	83	66.0	48	81	64.5	50	74	62.0	51	73	62.0	53	73	63.0	53	81	67.0	53	84	68.5	54	79	66.5	50	76	63.0
10/20	44	92	68.0	48	90	69.0	47	85	66.0	46	84	65.0	47	80	63.5	47	77	62.0	50	76	63.0	52	79	65.5	53	82	67.5	50	71	60.5	50	72	61.0	47	75	61.0
10/21	45	89	67.0	46	85	65.5	45	83	64.0	46	78	62.0	47	77	62.0	47	80	63.5	53	81	67.0	52	83	67.5	52	78	65.0	49	76	62.5	47	74	60.5	43	79	61.0
10/22	45	83	64.0	45	82	63.5	47	77	62.0	48	77	62.5	50	82	66.0	52	84	68.0	52	85	68.5	52	79	65.5	52	71	61.5	52	71	61.5	45	68	56.5	47	65	56.0
10/23	44	83	63.5	45	76	60.5	47	77	62.0	49	84	66.5	52	84	68.0	53	86	69.5	52	81	66.5	50	77	63.5	49	73	61.0	47	75	61.0	48	73	60.5	45	75	60.0
10/24	42	74	58.0	47	76	61.5	48	84	66.0	50	83	66.5	52	86	69.0	52	81	66.5	47	74	60.5	45	74	59.5	48	77	62.5	48	79	63.5	50	76	63.0	47	73	60.0
10/25	45	77	61.0	48	84	66.0	50	83	66.5	51	84	67.5	51	77	64.0	46	72	59.0	43	75	59.0	48	78	63.0	50	80	65.0	50	79	64.5	50	76	63.0	49	72	60.5
10/26	44	87	65.5	49	83	66.0	50	82	66.0	50	73	61.5	45	71	58.0	43	75	59.0	50	79	64.5	51	81	66.0	52	83	67.5	50	76	63.0	49	70	59.5	46	71	58.5
10/27	49	83	66.0	50	81	65.5	51	74	62.5	42	72	57.0	43	76	59.5	48	79	63.5	50	83	66.5	50	83	66.5	48	82	65.0	49	79	64.0	51	78	64.5	49	74	61.5
10/28	50	80	65.0	52	74	63.0	42	71	56.5	42	75	58.5	45	80	62.5	48	83	65.5	50	84	67.0	49	82	65.5	52	77	64.5	49	70	59.5	47	70	58.5	45	70	57.5
10/29	52	76	64.0	49	72	60.5	42	75	58.5	47	80	63.5	50	84	67.0	49	83	66.0	48	81	64.5	49	80	64.5	54	77	65.5	49	70	59.5	45	70	57.5	45	67	56.0
10/30	45	73	59.0	56	75	65.5	48	79	63.5	51	83	67.0	50	80	65.0	48	80	64.0	49	80	64.5	49	79	64.0	47	79	63.0	46	74	60.0	46	73	59.5	47	69	58.0
10/31	56	76	66.0	57	79	68.0	52	83	67.5	50	83	66.5	50	80	65.0	50	80	65.0	47	79	63.0	46	80	63.0	50	80	65.0	45	75	60.0	46	71	58.5	43	69	56.0

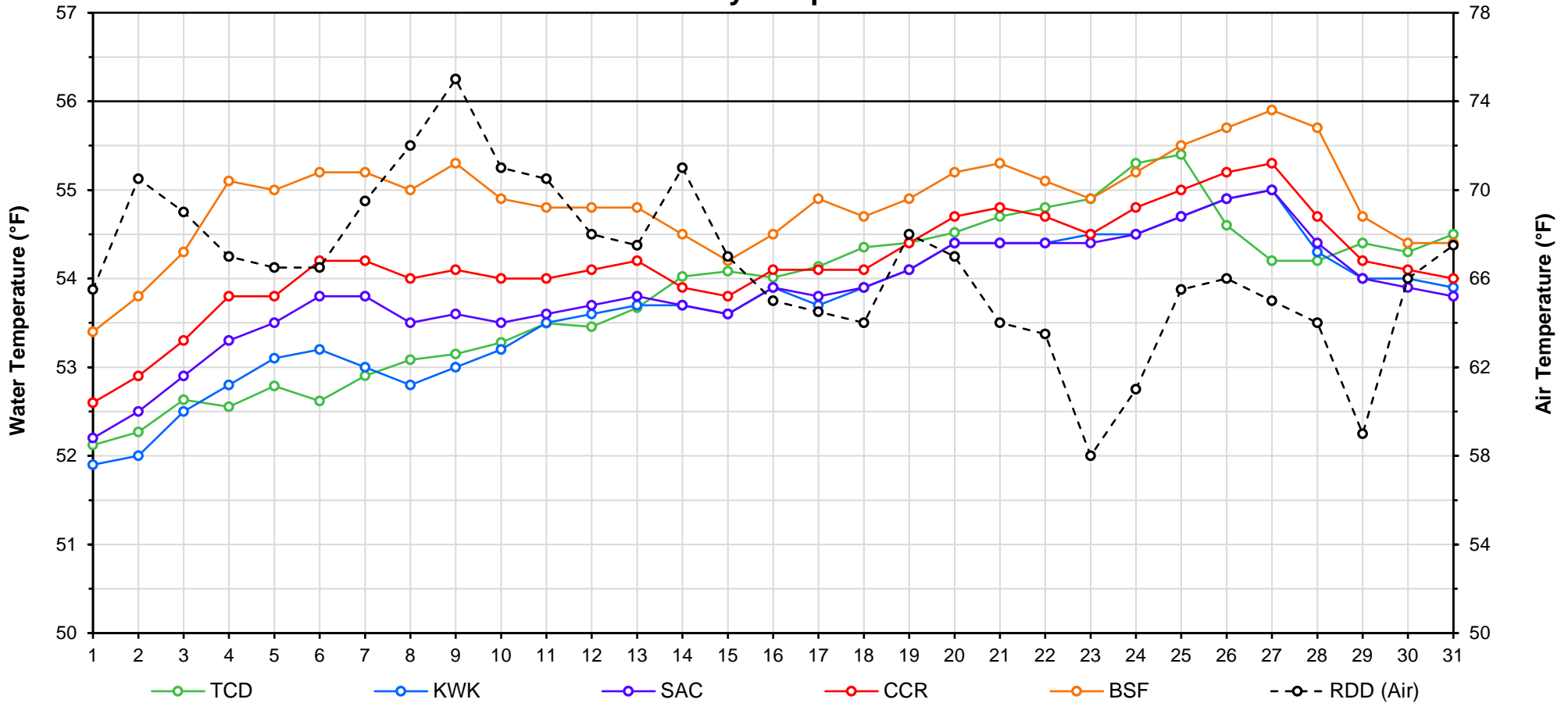
Web Links

- [10-Day Min/Max Forecast](#)
- [Previous Days Min/Max Actuals](#)

Legend

- NR = Forecasted temperatures not recorded
- 100** = Previous day actual temperatures in red and bolded indicate a record temperature for that date

# Mean Daily Temperatures



Station Details			
Code	Body of Water	Location <sup>1</sup>	CDEC Link
TCD	N/A	Shasta Power Plant	N/A
SHD	Sacramento River	0.3 miles downstream of Shasta Power Plant	<a href="#">Click Here</a>
SPP	N/A	Spring Creek Power Plant	N/A
KWK	Sacramento River	0.8 miles downstream of Keswick Dam	<a href="#">Click Here</a>
SAC	Sacramento River	4.8 miles downstream of Keswick Dam	<a href="#">Click Here</a>
CCR	Sacramento River	9.7 miles downstream of Keswick Dam	<a href="#">Click Here</a>
BSF	Sacramento River	25 miles downstream of Keswick Dam	<a href="#">Click Here</a>
JLF	Sacramento River	34 miles downstream of Keswick Dam	<a href="#">Click Here</a>
BND	Sacramento River	41 miles downstream of Keswick Dam	<a href="#">Click Here</a>
RDB	Sacramento River	58 miles downstream of Keswick Dam	<a href="#">Click Here</a>
IGO	Clear Creek	7.3 miles downstream of Whiskeytown Dam	<a href="#">Click Here</a>
LWS	Trinity River	1.1 miles downstream of Lewiston Dam	<a href="#">Click Here</a>
DGC <sup>2</sup>	Trinity River	19 miles downstream of Lewiston Dam	<a href="#">Click Here</a>
NFH <sup>3</sup>	Trinity River	38 miles downstream of Lewiston Dam	<a href="#">Click Here</a>

Temperature Control Point		
Point	Temp. (°F)	Begin Date
<b>BSF</b>	<b>56.0</b>	<b>05/25/2018</b>

## Notes

<sup>1</sup> Distances are approximate

<sup>2</sup> DGC is only reported in September

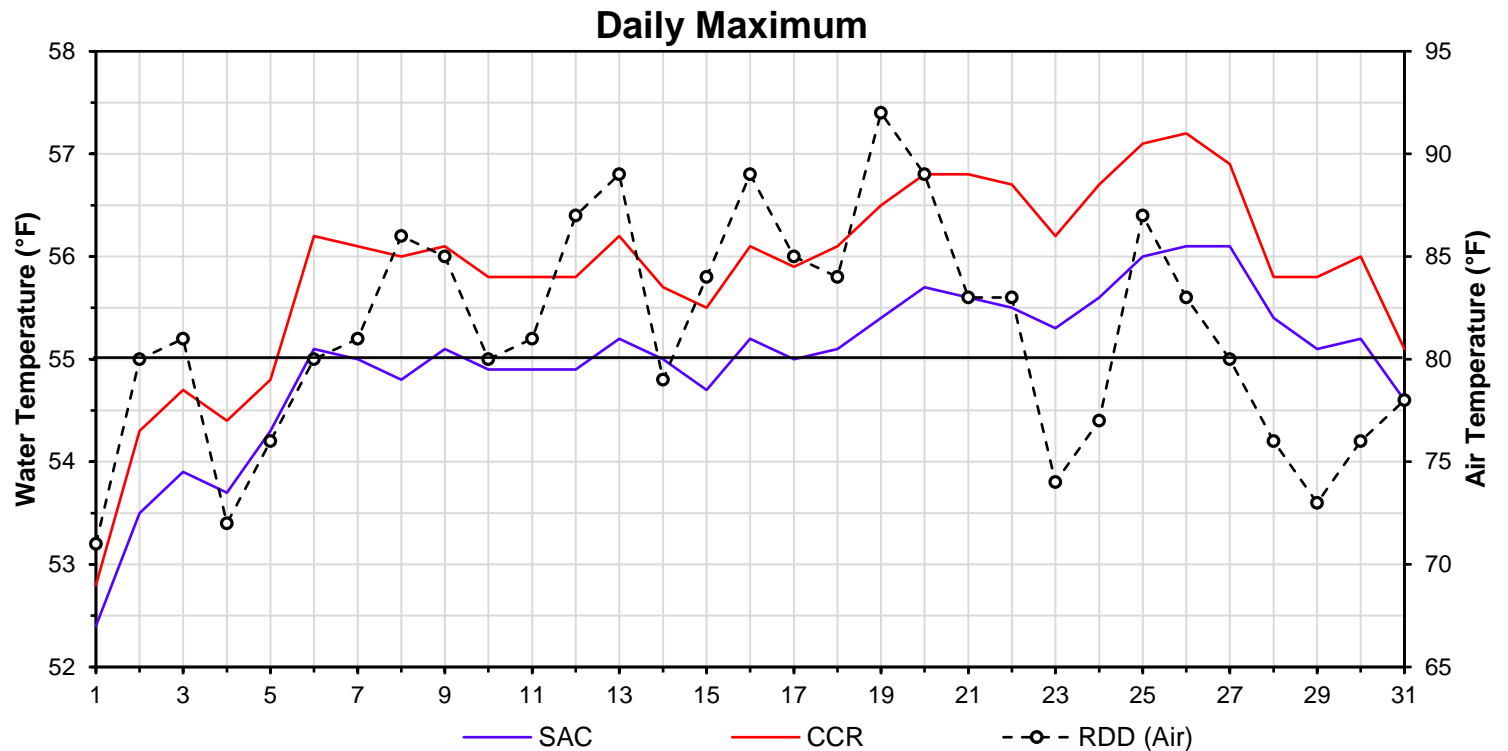
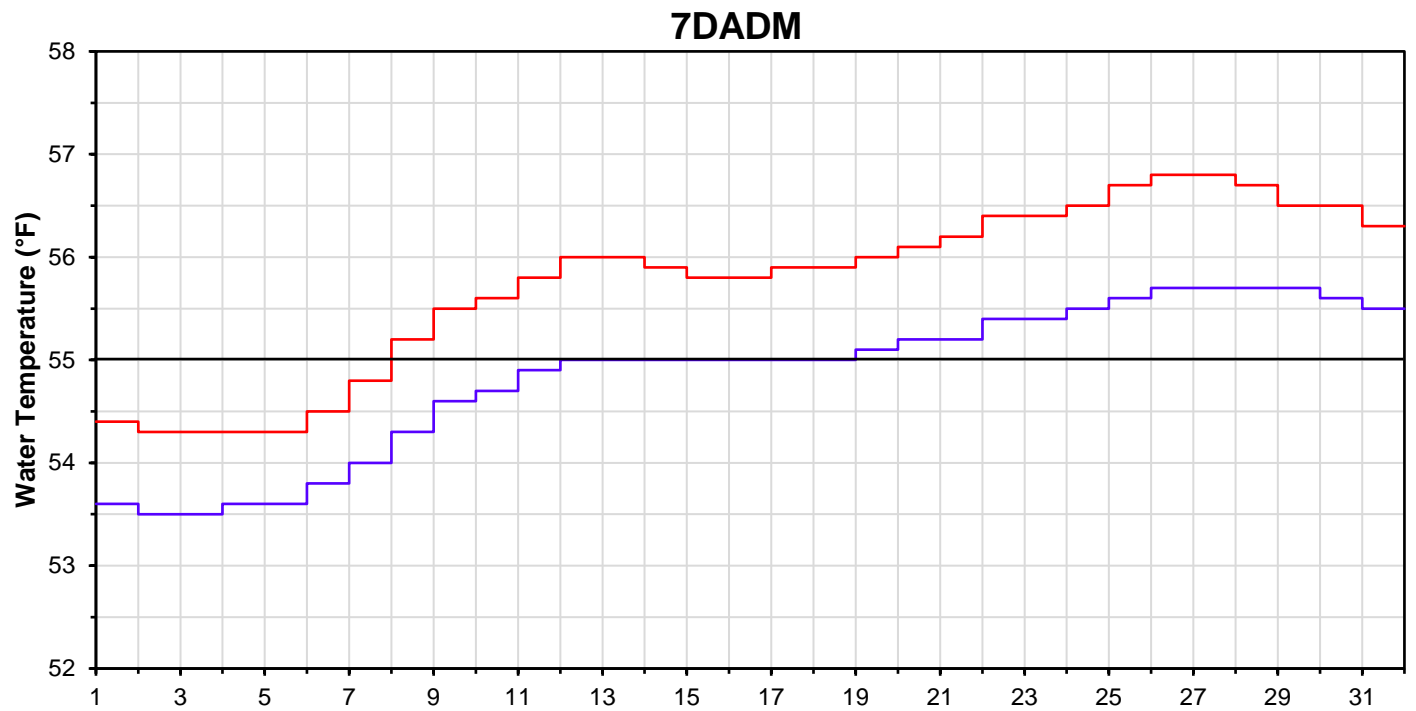
<sup>3</sup> NFH is only reported in October, November and December

DATE	Daily Max		7DADM <sup>1</sup>		DAT <sup>2</sup>
	SAC	CCR	SAC	CCR	BSF
10/01	52.4	52.8	53.6	54.4	53.4
10/02	53.5	54.3	53.5	54.3	53.8
10/03	53.9	54.7	53.5	54.3	54.3
10/04	53.7	54.4	53.6	54.3	55.1
10/05	54.3	54.8	53.6	54.3	55.0
10/06	55.1	56.2	53.8	54.5	55.2
10/07	55.0	56.1	54.0	54.8	55.2
10/08	54.8	56.0	54.3	55.2	55.0
10/09	55.1	56.1	54.6	55.5	55.3
10/10	54.9	55.8	54.7	55.6	54.9
10/11	54.9	55.8	54.9	55.8	54.8
10/12	54.9	55.8	55.0	56.0	54.8
10/13	55.2	56.2	55.0	56.0	54.8
10/14	55.0	55.7	55.0	55.9	54.5
10/15	54.7	55.5	55.0	55.8	54.2
10/16	55.2	56.1	55.0	55.8	54.5
10/17	55.0	55.9	55.0	55.9	54.9
10/18	55.1	56.1	55.0	55.9	54.7
10/19	55.4	56.5	55.1	56.0	54.9
10/20	55.7	56.8	55.2	56.1	55.2
10/21	55.6	56.8	55.2	56.2	55.3
10/22	55.5	56.7	55.4	56.4	55.1
10/23	55.3	56.2	55.4	56.4	54.9
10/24	55.6	56.7	55.5	56.5	55.2
10/25	56.0	57.1	55.6	56.7	55.5
10/26	56.1	57.2	55.7	56.8	55.7
10/27	56.1	56.9	55.7	56.8	55.9
10/28	55.4	55.8	55.7	56.7	55.7
10/29	55.1	55.8	55.7	56.5	54.7
10/30	55.2	56.0	55.6	56.5	54.4
10/31	54.6	55.1	55.5	56.3	54.4

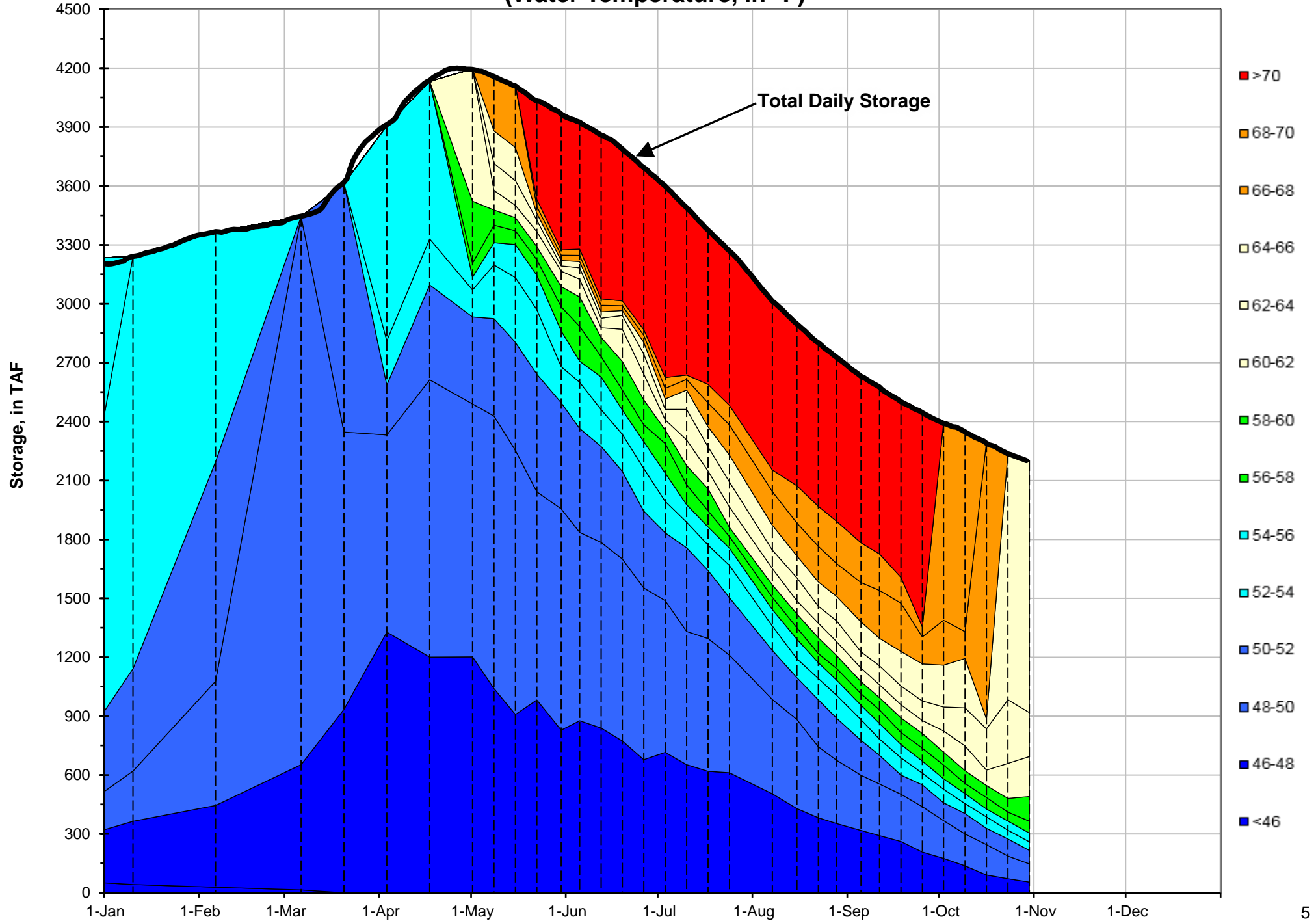
**Notes**

<sup>1</sup> 7DADM = 7-Day Average  
Daily Maximum

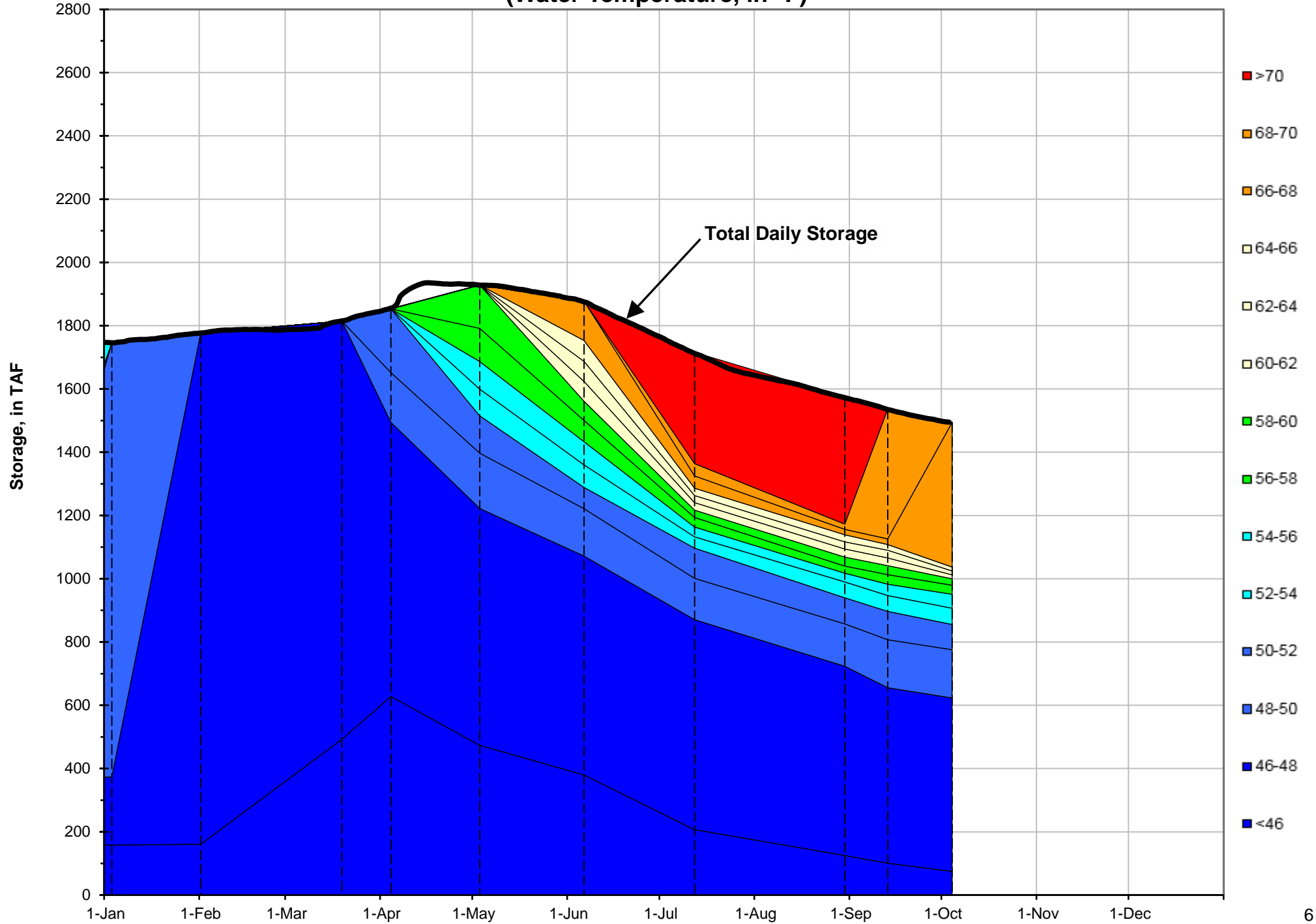
<sup>2</sup> DAT = Daily Average  
Temperature



### Shasta Lake Isothermobaths - 2018 (Water Temperature, in °F)



### Trinity Lake Isothermobaths - 2018 (Water Temperature, in °F)



### Whiskeytown Lake Isothermobaths - 2018 (Water Temperature, in °F)

