

Northern CVP Water Temperature Report

October - 2017

Page	Description
1	- Mean Daily Water Temperature, Release Flow Rates and Air Temperatures with Monthly Averages
2	- Redding 10-Day Forecasted Air Temperatures
3	- Sacramento River Mean Daily Water Temperature, Air Temperature and 10-Day Forecasted Air Temperature Plot - Water Temperature Measuring Station Details - Temperature Control Point Details
4	- Lake Shasta Isothermalbaths Plot
5	- Daily Maximum and 7DADM
x	- TCD Configuration (External Link)



All Data in this Report is Preliminary and Subject to Change

DATE	Mean Daily Water Temperatures (°F)													Mean Daily Release (CFS)			Mean Daily Air Temperatures (°F)				
	TCD ¹	SHD	SPP ¹	KWK	SAC	CCR	BSF ²	JLF	BND	RDB	IGO	LWS	NFH ³	Shasta Generation	Spring Creek P.P.	Keswick Total	RDD	BSF	RDB	LWS	
Sep	50.3	49.4	54.8	51.2	51.6	52.1	53.6	54.7	55.3	56.4	56.1	50.3	54.3	7274	983	8420	76.7	70.8	72.6	64.1	
10/01	50.8	50.0	54.6	51.4	51.7	52.1	53.2	53.9	54.4	55.2	54.3	49.6	55.4	7031	669	7509	69.0	66.7	68.7	53.8	
10/02	50.8	49.9	54.6	51.2	51.5	51.9	52.9	53.5	53.9	54.6	53.8	49.5	53.4	6876	548	7357	65.0	64.0	65.5	50.8	
10/03	51.4	50.3	54.7	51.2	51.5	51.9	52.9	53.4	53.8	54.3	54.0	49.7	53.6	6819	550	7709	66.0	66.5	67.2	59.6	
10/04	51.0	49.7	54.6	51.3	51.5	51.8	52.7	53.2	53.4	54.2	53.6	49.6	53.1	5714	1066	7221	↓	60.0	56.6	58.6	51.9
10/05	51.5	50.3	54.6	51.8	52.1	52.4	53.2	53.6	53.7	54.2	53.8	49.5	52.6	6697	744	7705	66.0	58.5	62.9	52.1	
10/06	51.2	50.1	54.6	51.9	52.1	52.4	53.3	53.8	54.0	54.8	54.1	49.3	52.8	6134	1647	8103	70.0	62.0	66.8	55.0	
10/07	51.3	50.2	54.7	52.1	52.5	52.9	53.9	54.4	54.5	55.1	54.1	49.2	53.4	5799	1496	8042	69.0	63.3	65.8	56.8	
10/08	51.4	50.2	54.6	52.2	52.4	52.7	53.6	54.1	54.4	55.2	54.1	49.1	53.4	5634	1203	7414	69.0	65.9	66.6	53.8	
10/09	51.3	50.2	54.7	51.8	52.0	52.4	53.3	53.7	53.9	54.5	54.0	49.2	52.5	6287	1224	7401	68.5	64.7	65.4	60.3	
10/10	51.1	50.1	54.7	51.6	51.8	52.1	52.8	53.3	53.5	54.3	53.4	49.2	51.3	6192	630	7400	61.5	56.3	59.8	50.6	
10/11	51.9	50.7	55.3	51.4	51.6	51.9	52.8	53.2	53.3	54.0	53.7	49.0	51.2	7305	17	7403	62.0	56.8	61.6	49.2	
10/12	51.9	50.7	55.1	51.3	51.4	51.6	52.2	52.6	52.8	53.4	53.4	48.6	50.4	7581	14	7408	64.0	58.7	61.4	45.0	
10/13	51.8	50.7	55.1	51.6	51.8	52.1	52.8	52.9	53.0	53.3	?	54.0	48.5	7215	14	7394	66.5	56.3	61.8	48.1	
10/14	52.0	51.0	54.9	51.6	51.8	52.1	52.8	53.1	53.3	53.8	?	53.5	48.4	6785	507	7394	69.0	64.0	65.0	49.3	
10/15	51.5	50.7	54.9	51.9	52.0	52.2	52.8	53.1	53.2	53.7	?	53.4	48.3	6851	485	7397	67.5	57.5	61.7	50.2	
10/16	52.1	51.0	55.0	51.8	51.9	52.3	52.9	53.2	53.3	53.8	?	53.5	48.1	6704	574	7405	64.0	55.6	60.4	51.3	
10/17	52.1	51.0	55.0	52.0	52.1	52.3	52.9	53.2	53.3	53.8	?	53.7	48.2	6704	574	7405	63.5	56.5	59.8	53.7	
10/18	52.2	51.2	55.0	52.2	52.3	52.6	53.2	53.4	53.5	53.9	?	53.7	48.0	6512	526	7404	62.0	55.4	59.3	52.4	
10/19	52.3	51.1	55.0	52.2	52.3	52.5	53.1	53.4	53.6	54.1	53.7	48.1	50.9	6727	720	7393	56.5	55.3	57.4	49.3	
10/20	52.3	51.3	55.3	52.3	52.3	52.4	53.2	53.6	53.7	54.2	53.8	48.1	51.3	6599	691	7443	52.0	52.5	53.5	46.0	
10/21	52.3	51.4	55.3	52.3	52.2	52.3	52.6	52.7	52.8	53.4	53.5	47.9	49.6	6336	657	7436	53.5	49.5	52.8	41.7	
10/22	52.1	51.1	55.3	52.3	52.5	52.6	53.2	53.2	53.3	53.6	54.1	48.8	51.3	6431	553	7441	60.0	55.3	59.6	53.1	
10/23	52.2	51.3	55.5	52.6	52.9	53.3	54.2	54.6	54.7	55.1	55.2	49.3	53.1	6998	595	7437	↑	77.0	68.1	72.5	55.7
10/24	51.9	51.0	54.9	52.7	53.1	53.4	54.6	55.1	55.4	56.3	55.1	48.7	54.1	7044	267	7440	77.0	66.7	72.4	55.4	
10/25	52.2	51.3	55.2	52.3	52.6	53.0	54.2	54.7	55.0	56.0	54.8	48.6	53.8	7205	485	7435	↑	73.0	62.7	66.5	54.4
10/26	52.3	51.4	55.3	52.3	52.6	52.8	53.7	54.1	54.3	55.1	54.7	49.1	53.3	6903	432	7483	70.5	60.8	64.7	53.6	
10/27	52.2	51.3	55.3	52.4	52.7	52.9	53.7	54.0	54.2	54.8	54.5	48.9	52.3	6823	486	7452	70.5	60.7	64.0	52.7	
10/28	52.2	51.4	55.3	52.4	52.6	52.9	53.7	54.1	54.2	54.9	54.5	49.1	51.8	6945	487	7455	66.5	59.1	62.7	52.7	
10/29	52.4	51.5	55.2	52.4	52.6	52.8	53.6	53.9	54.0	54.7	54.4	49.0	51.5	6841	491	7448	↑	66.0	58.8	62.6	51.8
10/30	52.4	51.6	55.2	52.4	52.5	52.8	53.6	54.0	54.2	54.7	54.3	48.8	51.2	6951	479	7498	62.5	57.1	58.5	50.9	
10/31	52.6	51.7	55.8	52.5	52.6	52.8	53.5	53.7	53.9	54.4	54.2	48.3	50.8	7398	14	7496	↑	64.0	57.8	58.9	48.6
Oct	51.8	50.8	55.0	52.0	52.2	52.5	53.3	53.6	53.8	54.4	54.0	48.8	52.0	6711	608	7482	65.5	59.7	62.7	51.9	

Total CFS	208041	18845	231928
Total AF	412641	37378	460020

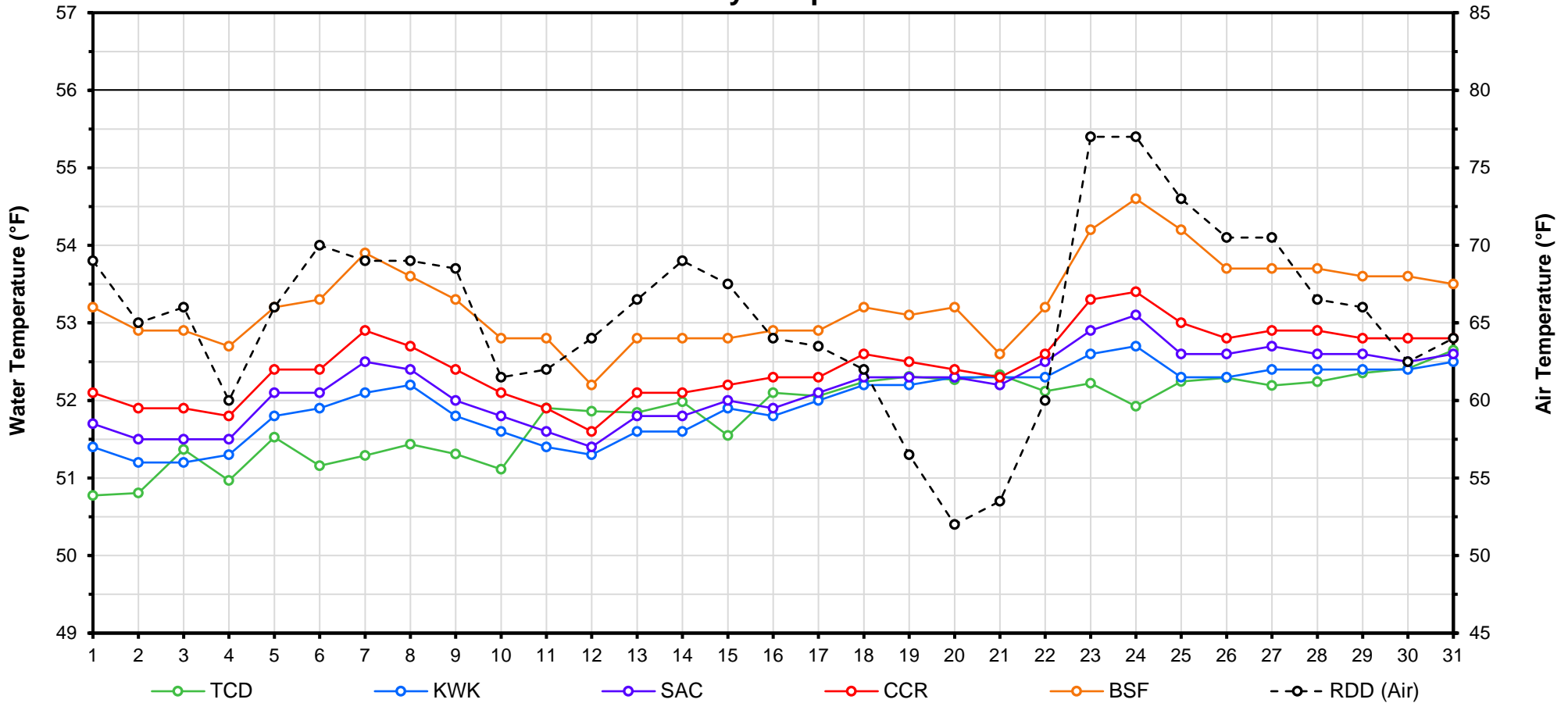
Legend

Notes

- ? = 1-9 hours of data missing (Average includes estimations)
- ! = 10 or more hours of data missing (Average not calculated)
- # = Station out of service
- ↑ = Record high air temperature
- ↓ = Record low air temperature
- = Monthly Averages

- ¹ Temperatures are weighted averages based on individual penstock flow and temperature
- Highlighted cells in the TCD column indicate a TCD change was made on that day
- ² Current control point (see page 3 for more details)
- ³ NFH is only reported in October, November and December

Mean Daily Temperatures



Station Details			
Code	Body of Water	Location ¹	CDEC Link
TCD	N/A	Shasta Power Plant	N/A
SHD	Sacramento River	0.3 miles downstream of Shasta Power Plant	Click Here
SPP	N/A	Spring Creek Power Plant	N/A
KWK	Sacramento River	0.8 miles downstream of Keswick Dam	Click Here
SAC	Sacramento River	4.8 miles downstream of Keswick Dam	Click Here
CCR	Sacramento River	9.7 miles downstream of Keswick Dam	Click Here
BSF	Sacramento River	25 miles downstream of Keswick Dam	Click Here
JLF	Sacramento River	34 miles downstream of Keswick Dam	Click Here
BND	Sacramento River	41 miles downstream of Keswick Dam	Click Here
RDB	Sacramento River	58 miles downstream of Keswick Dam	Click Here
IGO	Clear Creek	7.3 miles downstream of Whiskeytown Dam	Click Here
LWS	Trinity River	1.1 miles downstream of Lewiston Dam	Click Here
DGC ²	Trinity River	19 miles downstream of Lewiston Dam	Click Here
NFH ³	Trinity River	38 miles downstream of Lewiston Dam	Click Here

Temperature Control Point		
Point	Temp. (°F)	Date Range
BSF	56.0	06/01/17 - Current

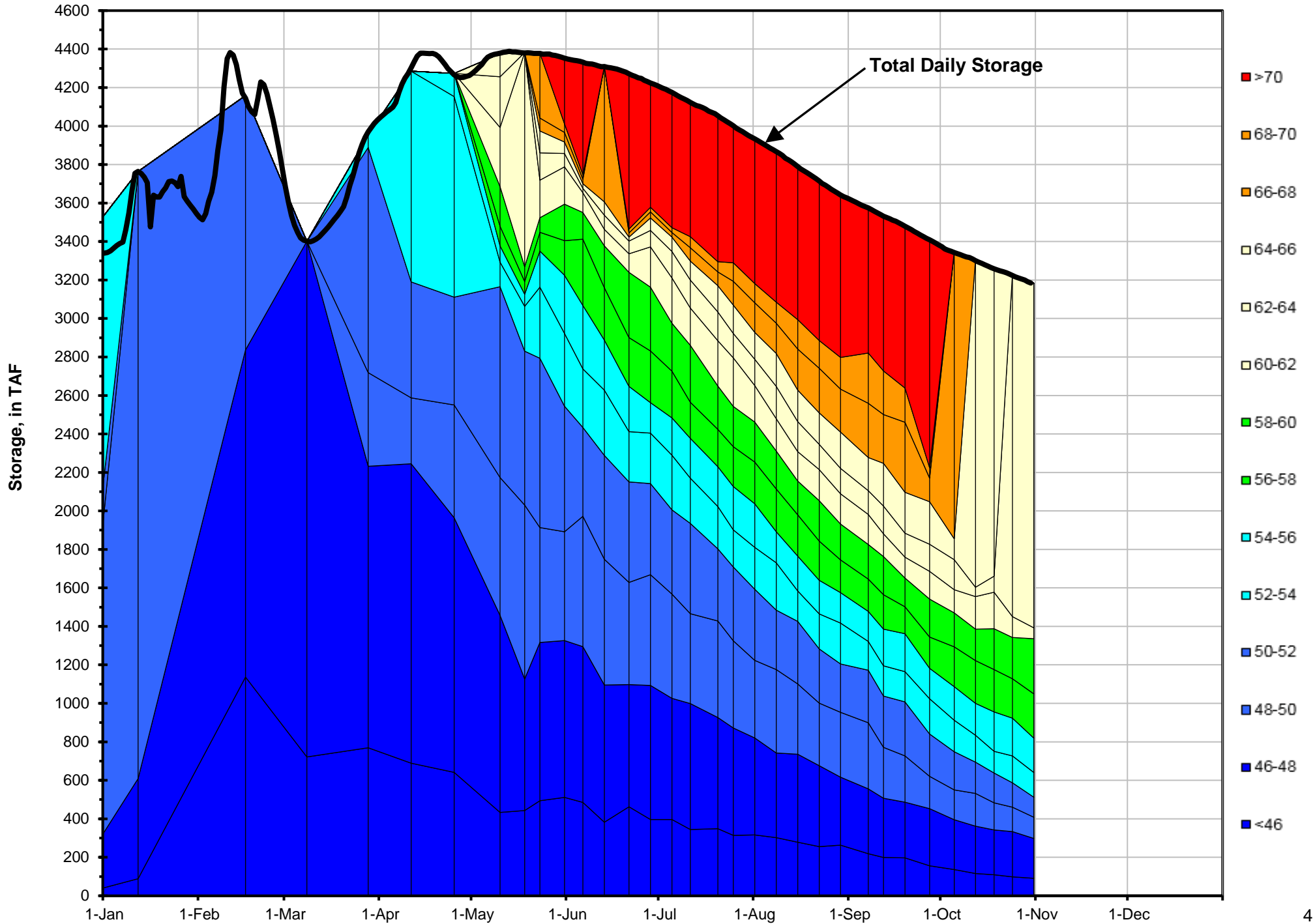
Notes

¹ Distances are approximate

² DGC is only reported in September

³ NFH is only reported in October, November and December

Lake Shasta Isothermalbaths - 2017 (Water Temperature, in °F)



DATE	Daily Max		7DADM ¹		DAT ²
	SAC	CCR	SAC	CCR	BSF
10/01	53.0	53.9	52.8	53.7	53.2
10/02	52.8	53.7	52.8	53.7	52.9
10/03	52.7	53.7	52.8	53.7	52.9
10/04	52.8	54.0	52.8	53.7	52.7
10/05	53.4	54.2	52.8	53.8	53.2
10/06	53.7	54.5	53.0	54.0	53.3
10/07	53.8	54.8	53.2	54.1	53.9
10/08	53.6	54.4	53.3	54.2	53.6
10/09	53.1	54.0	53.3	54.2	53.3
10/10	52.6	53.3	53.3	54.2	52.8
10/11	52.7	53.4	53.3	54.1	52.8
10/12	52.4	53.0	53.1	53.9	52.2
10/13	52.8	53.5	53.0	53.8	52.8
10/14	52.8	53.4	52.9	53.6	52.8
10/15	53.2	53.8	52.8	53.5	52.8
10/16	53.0	53.8	52.8	53.5	52.9
10/17	53.4	54.0	52.9	53.6	52.9
10/18	53.5	54.1	53.0	53.7	53.2
10/19	53.0	53.5	53.1	53.7	53.1
10/20	53.0	53.2	53.1	53.7	53.2
10/21	52.9	53.2	53.1	53.7	52.6
10/22	53.6	54.2	53.2	53.7	53.2
10/23	54.3	55.0	53.4	53.9	54.2
10/24	54.3	55.0	53.5	54.0	54.6
10/25	53.6	54.4	53.5	54.1	54.2
10/26	53.7	54.4	53.6	54.2	53.7
10/27	53.9	54.4	53.8	54.4	53.7
10/28	53.7	54.3	53.9	54.5	53.7
10/29	53.7	54.2	53.9	54.5	53.6
10/30	53.5	54.0	53.8	54.4	53.6
10/31	53.6	54.0	53.7	54.2	53.5

Notes

¹ 7DADM = 7-Day Average Daily Maximum

² DAT = Daily Average Temperature

