

Northern CVP Water Temperature Report

October - 2016

Page	Description
1	- Mean Daily Water Temperature, Release Flow Rates and Air Temperatures with Monthly Averages
2	- Redding 10-Day Forecasted Air Temperatures
3	- Sacramento River Mean Daily Water Temperature, Air Temperature and 10-Day Forecasted Air Temperature Plot - Water Temperature Measuring Station Details - Temperature Control Point Details
4	- Lake Shasta Isothermalbaths Plot
5	- Daily Maximum and 7DADM
x	- TCD Configuration (External Link)



All Data in this Report is Preliminary and Subject to Change

DATE	Mean Daily Water Temperatures (°F)													Mean Daily Release (CFS)			Mean Daily Air Temperatures (°F)				
	TCD ¹	SHD	SPP ¹	KWK	SAC	CCR	BSF ²	JLF	BND	RDB	IGO	LWS	NFH ³	Shasta Generation	Spring Creek P.P.	Keswick Total	RDD	BSF	RDB	LWS	
Sep	50.8	50.0	57.7	51.5	52.0	52.6	53.9	54.9	55.4	56.7	56.6	51.6	-	7826	375	8378	75.9	70.1	71.7	63.9	
10/01	50.7	50.1	57.9	51.5	51.8	52.2	53.2	53.8	54.2	55.3	56.1	51.5	54.8	6289	746	7368	↓	61.0	60.1	61.9	52.1
10/02	50.7	50.1	58.0	51.4	51.4	51.7	52.4	53.0	53.4	54.2	55.9	51.2	53.1	6463	349	7366		53.5	50.6	52.3	46.1
10/03	50.9	50.3	57.8	50.9	50.8	51.0	51.7	52.0	52.3	52.8	55.7	50.8	52.1	6942	276	7349		50.0	49.6	51.2	44.9
10/04	50.9	50.2	57.9	50.9	51.3	51.6	52.5	52.9	53.1	53.4	56.8	51.3	53.7	6469	454	7021		61.5	57.8	61.0	52.7
10/05	51.1	50.3	57.6	51.4	51.7	52.0	52.8	53.3	53.6	54.3	56.6	50.8	54.2	6546	309	7013		59.5	55.3	60.2	49.9
10/06	51.1	50.3	57.8	51.6	51.8	52.3	53.2	53.7	54.0	54.7	56.9	50.8	53.9	5865	808	6764		67.5	59.3	62.3	50.6
10/07	51.1	50.4	57.8	52.2	52.5	52.8	53.5	54.0	54.3	55.0	57.2	50.9	54.4	4953	1036	6751		68.5	61.6	65.4	55.0
10/08	51.3	50.3	57.7	52.2	52.7	53.2	54.2	54.8	55.2	55.8	57.6	51.5	55.4	6060	398	6756		69.5	63.5	65.5	59.9
10/09	51.5	50.5	57.8	51.9	52.3	52.8	54.0	54.7	55.1	56.1	57.5	51.7	56.3	6069	292	6751		68.5	62.8	66.1	60.6
10/10	51.5	50.6	57.8	51.9	52.4	52.9	54.0	54.7	55.1	55.9	57.6	52.1	56.4	5860	292	6510		69.5	62.9	64.4	59.7
10/11	51.6	50.6	57.8	52.0	52.4	52.7	53.7	54.4	54.8	55.8	57.1	51.9	56.1	6325	365	6505		65.0	59.8	62.9	56.6
10/12	51.6	50.7	57.8	52.0	52.3	52.6	53.6	54.3	54.7	55.5	57.0	51.9	55.2	6275	417	6537		63.0	59.2	61.8	56.5
10/13	51.6	50.8	57.9	52.0	52.1	52.4	53.3	54.0	54.3	55.1	57.4	52.2	55.1	5812	380	6545		65.5	61.7	62.9	58.9
10/14	51.8	51.0	57.9	51.9	52.3	52.8	54.1	54.8	55.1	55.5	57.8	52.3	55.5	6180	14	6542		62.0	62.5	62.4	55.1
10/15	51.8	51.0	57.8	51.9	52.0	52.4	53.7	54.4	54.7	55.4	57.2	51.9	54.1	5544	362	6519		60.0	60.5	60.2	51.3
10/16	52.3	51.2	58.0	51.9	52.0	52.4	53.5	54.0	54.3	54.8	57.3	52.0	52.1	6164	417	6515		60.5	60.3	59.5	50.0
10/17	52.0	51.1	57.9	52.1	52.1	52.3	53.3	53.8	54.1	54.9	57.1	52.2	52.4	6027	658	6519		58.5	56.7	58.5	49.5
10/18	52.0	51.1	58.0	52.6	52.9	53.2	54.0	54.5	54.5	54.8	57.1	51.8	53.5	5192	1086	6232		59.0	56.0	57.7	50.1
10/19	52.1	51.2	58.2	53.0	53.3	53.5	54.1	54.4	54.6	55.2	56.8	51.1	52.8	4812	802	6222		65.0	56.7	60.3	48.3
10/20	52.2	51.2	58.2	52.7	53.0	53.5	54.4	54.8	55.0	55.5	57.3	51.2	53.0	5304	730	6225		64.5	58.1	62.1	50.8
10/21	52.4	51.5	58.1	52.6	53.1	53.6	54.3	54.8	55.0	55.7	57.7	51.9	54.3	5789	295	5770		62.5	58.1	61.8	55.6
10/22	52.6	51.8	58.3	52.6	53.0	53.6	54.3	54.9	55.2	55.9	57.5	51.7	54.6	5733	16	5495		62.0	57.4	61.0	52.9
10/23	51.8	51.2	57.7	52.6	52.7	53.1	54.0	54.5	54.8	55.5	57.2	51.9	53.6	5549	14	5493		59.5	54.9	58.6	51.7
10/24	51.3	50.7	57.5	52.4	52.4	52.7	53.4	53.9	54.2	54.7	57.0	51.6	52.9	5367	14	5444		57.0	57.2	59.7	50.9
10/25	52.1	51.2	57.5	51.7	52.0	52.6	53.8	54.3	54.5	54.8	57.4	51.8	51.5	4817	14	5346		60.0	59.1	59.8	51.0
10/26	52.0	51.5	57.7	51.4	52.1	52.9	54.3	54.9	55.1	55.7	58.1	52.6	52.6	4817	19	4888		65.0	62.3	64.5	57.7
10/27	51.6	50.9	58.0	52.1	52.1	52.4	53.8	54.4	54.8	55.7	57.5	52.1	52.4	4791	191	4887		57.5	57.2	58.8	52.0
10/28	51.8	51.1	58.3	52.0	52.2	52.7	54.7	55.3	55.3	55.2	57.5	51.8	51.7	4057	14	4889		57.0	56.8	57.6	50.0
10/29	51.5	50.9	57.6	51.6	52.0	52.8	54.7	55.5	55.8	56.2	57.9	52.1	52.5	3861	14	4889		62.5	62.5	63.1	54.2
10/30	52.3	51.6	57.5	51.8	52.1	52.4	54.4	55.0	55.3	56.1	57.5	51.9	51.6	5475	14	4864		58.0	57.9	58.6	50.3
10/31	51.9	51.3	58.3	51.7	52.4	52.2	54.3	54.7	54.8	54.9	57.1	51.2	50.4	4387	989	4864		54.5	55.5	55.5	46.2
Oct	51.6	50.9	57.9	52.0	52.2	52.6	53.7	54.3	54.6	55.2	57.2	51.7	53.6	5606	380	6156		61.5	58.5	60.6	52.6

Total CFS	173794	11785	190839
Total AF	344713	23375	378521

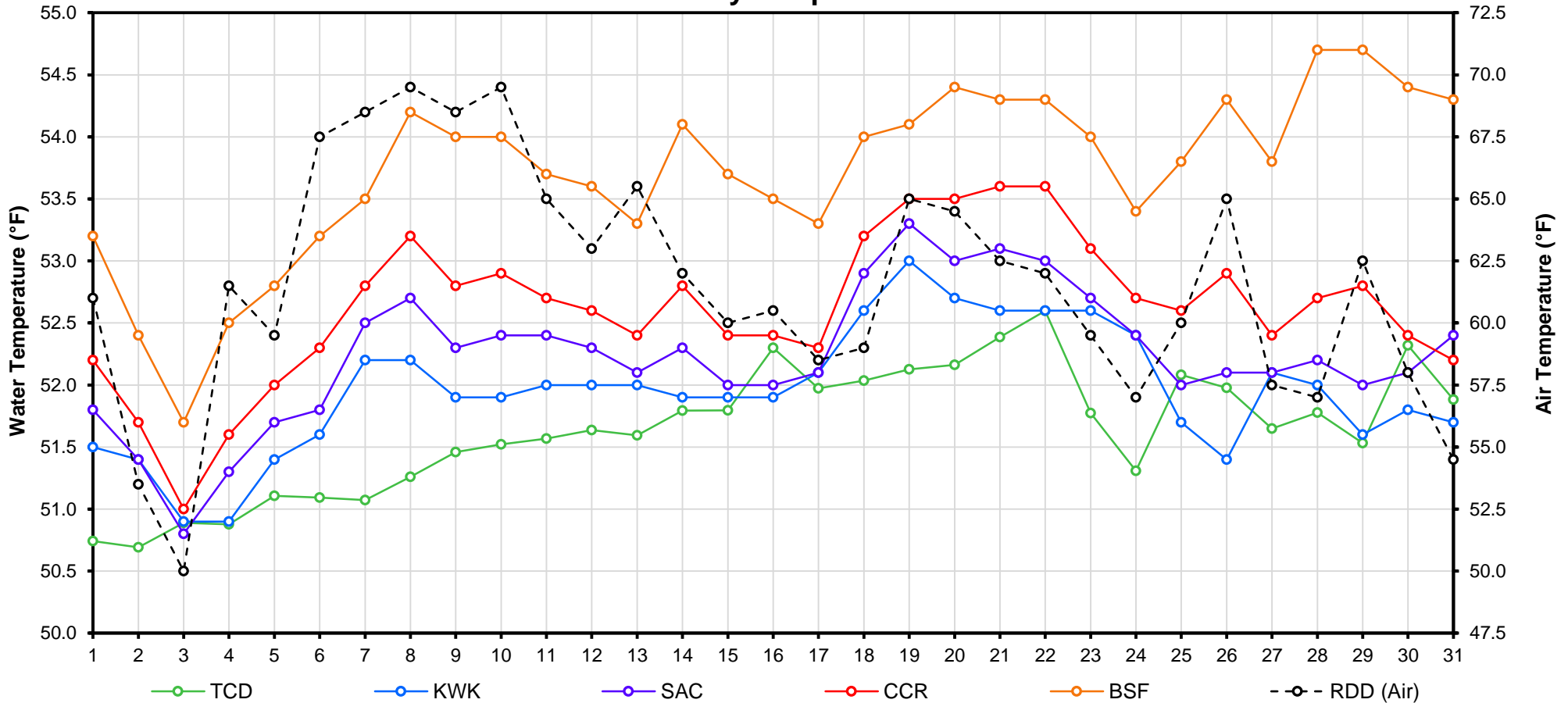
Legend

- ? = 1-9 hours of data missing (Average includes estimations)
- ! = 10 or more hours of data missing (Average not calculated)
- # = Station out of service
- ↑ = Record high air temperature
- ↓ = Record low air temperature
- ☐ = Monthly Averages

Notes

- ¹ Temperatures are weighted averages based on individual penstock flow and temperature
- Highlighted cells in the TCD column indicate a TCD change was made on that day
- ² Current control point (see page 3 for more details)
- ³ NFH is only reported in October, November and December

Mean Daily Temperatures



Station Details			
Code	Body of Water	Location ¹	CDEC Link
TCD	N/A	Shasta Power Plant	N/A
SHD	Sacramento River	0.3 miles downstream of Shasta Power Plant	Click Here
SPP	N/A	Spring Creek Power Plant	N/A
KWK	Sacramento River	0.8 miles downstream of Keswick Dam	Click Here
SAC	Sacramento River	4.8 miles downstream of Keswick Dam	Click Here
CCR	Sacramento River	9.7 miles downstream of Keswick Dam	Click Here
BSF	Sacramento River	25 miles downstream of Keswick Dam	Click Here
JLF	Sacramento River	34 miles downstream of Keswick Dam	Click Here
BND	Sacramento River	41 miles downstream of Keswick Dam	Click Here
RDB	Sacramento River	58 miles downstream of Keswick Dam	Click Here
IGO	Clear Creek	7.3 miles downstream of Whiskeytown Dam	Click Here
LWS	Trinity River	1.1 miles downstream of Lewiston Dam	Click Here
DGC ²	Trinity River	19 miles downstream of Lewiston Dam	Click Here
NFH ³	Trinity River	38 miles downstream of Lewiston Dam	Click Here

Temperature Control Point		
Point	Temp. (°F)	Date Range
BSF	56.0	6/17 - Current

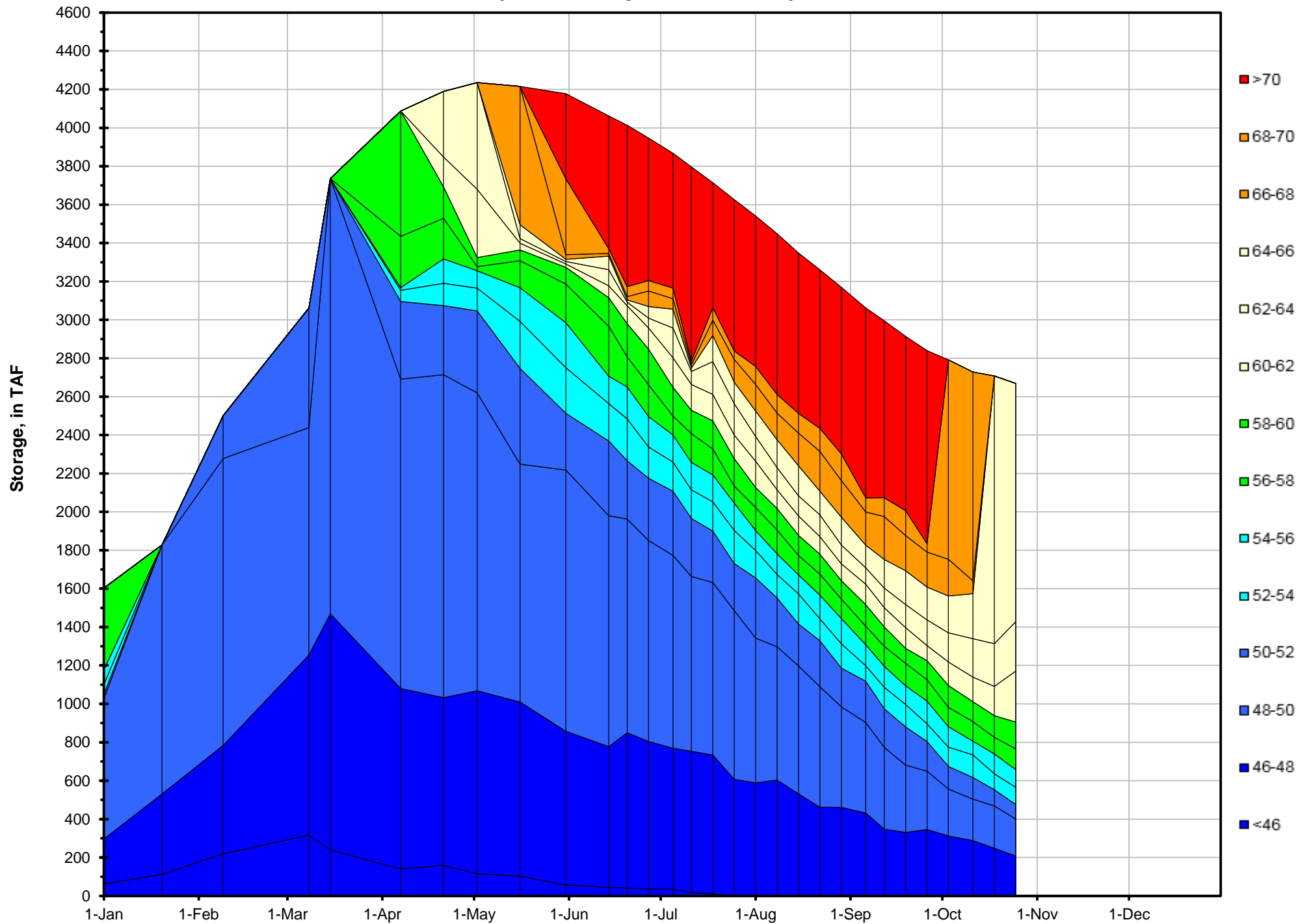
Notes

¹ Distances are approximate

² DGC is only reported in September

³ NFH is only reported in October, November and December

Lake Shasta Isothermalbaths - 2016 (Water Temperature, in °F)



DATE	Daily Max		7DADM ¹		DAT ²
	SAC	CCR	SAC	CCR	BSF
10/01	53.2	54.2	53.7	54.7	53.2
10/02	52.2	52.7	53.5	54.3	52.4
10/03	51.2	51.5	53.1	53.9	51.7
10/04	53.0	53.9	53.0	53.7	52.5
10/05	53.5	54.2	52.9	53.6	52.8
10/06	53.6	54.5	52.8	53.5	53.2
10/07	54.2	55.2	53.0	53.7	53.5
10/08	54.7	55.4	53.2	53.9	54.2
10/09	54.3	55.1	53.5	54.3	54.0
10/10	54.6	55.0	54.0	54.8	54.0
10/11	54.5	55.0	54.2	54.9	53.7
10/12	54.0	54.4	54.3	54.9	53.6
10/13	52.8	53.0	54.2	54.7	53.3
10/14	53.2	53.6	54.0	54.5	54.1
10/15	52.2	52.6	53.7	54.1	53.7
10/16	52.8	53.2	53.4	53.8	53.5
10/17	53.5	53.5	53.3	53.6	53.3
10/18	54.6	55.1	53.3	53.6	54.0
10/19	54.8	55.6	53.4	53.8	54.1
10/20	54.6	55.5	53.7	54.2	54.4
10/21	55.2	55.9	54.0	54.5	54.3
10/22	55.1	56.4	54.4	55.0	54.3
10/23	54.1	54.8	54.6	55.3	54.0
10/24	52.7	53.2	54.4	55.2	53.4
10/25	52.2	52.9	54.1	54.9	53.8
10/26	54.1	55.0	54.0	54.8	54.3
10/27	52.7	53.1	53.7	54.5	53.8
10/28	52.6	53.0	53.4	54.1	54.7
10/29	52.6	53.6	53.0	53.7	54.7
10/30	52.8	52.8	52.8	53.4	54.4
10/31	52.8	52.6	52.8	53.3	54.3

Notes

¹ 7DADM = 7-Day Average Daily Maximum

² DAT = Daily Average Temperature

