

Northern CVP Water Temperature Report

September - 2019

Page	Description
1	- Mean Daily Water Temperature, Release Flow Rates and Air Temperatures with Monthly Averages
2	- Redding 10-Day Forecasted Air Temperatures
3	- Sacramento River Mean Daily Water Temperature, Air Temperature and 10-Day Forecasted Air Temperature Plot - Water Temperature Measuring Station Details - Temperature Control Point Details
4	- Daily Maximum and 7DADM
5	- Shasta Lake Isothermobaths Plot
6	- Trinity Lake Isothermobaths Plot
7	- Whiskeytown Lake Isothermobaths Plot
x	- TCD Configuration (External Link)



All Data in this Report is Preliminary and Subject to Change

DATE	Mean Daily Water Temperatures (°F)														Mean Daily Release (CFS)			Mean Daily Air Temperatures (°F)				
	TCD ¹	SHD	SPP ¹	KWK	SAC	CCR	APR ⁴	BSF ²	JLF	BND	RDB	IGO	LWS	DGC ³	Shasta Generation	Spring Creek P.P.	Keswick Total	RDD	BSF	RDB	LWS	
Aug	50.7	49.9	56.1	51.6	52.4	52.9	53.8	54.6	56.1	56.9	58.0	58.4	52.8	-	9183	1112	10729	83.1	77.2	77.8	-	
09/01	50.4	49.6	56.8	51.3	52.1	53.0	53.7	54.4	55.9	!	-	57.8	58.3	53.9	58.7	8175	431	9501	81.0	75.5	76.8	-
09/02	50.5	49.7	57.0	51.2	52.3	52.7	53.5	54.2	55.7	!	-	57.7	58.2	51.4	54.9	8665	187	9477	82.5	75.7	77.6	-
09/03	50.6	49.8	56.7	51.0	51.7	52.4	53.1	53.9	55.5	!	-	57.5	58.1	50.9	53.0	8865	521	9450	79.0	74.0	74.4	-
09/04	50.6	49.6	56.7	51.2	? 51.9	52.5	53.2	53.8	55.2	!	-	56.7	57.8	50.8	53.3	8250	398	9006	80.0	73.1	76.2	-
09/05	50.9	49.7	56.8	51.2	51.9	52.7	53.4	54.1	55.7	!	-	57.3	58.5	52.8	55.1	8273	300	8988	82.5	76.5	77.8	-
09/06	50.7	49.6	56.8	51.5	? 52.1	52.8	53.4	54.0	55.5	56.2	57.3	58.0	53.3	57.0	7766	658	8502	76.5	70.4	71.7	-	
09/07	50.5	? 49.4	56.6	51.6	52.2	52.9	53.5	54.0	55.6	56.3	57.2	57.5	52.8	56.5	6848	967	8497	74.5	69.0	68.8	-	
09/08	51.0	49.8	57.2	51.5	? 52.3	53.1	53.8	54.4	55.9	56.5	57.4	57.6	52.6	55.9	8313	113	8478	72.0	69.0	69.2	-	
09/09	50.7	49.7	57.4	51.4	? 52.1	52.8	53.3	? 53.9	55.5	56.2	57.4	58.0	52.5	55.8	7929	19	8501	71.0	67.7	70.5	-	
09/10	50.8	49.5	# -	51.4	52.1	52.9	53.4	54.0	55.5	56.1	57.0	57.9	52.9	55.3	7670	0	8491	72.5	68.7	69.5	-	
09/11	50.8	49.7	# -	51.1	51.8	52.6	53.2	53.8	55.4	56.1	57.1	57.8	53.2	55.7	8386	0	8483	75.0	68.9	70.8	-	
09/12	50.7	49.8	# -	51.2	51.8	52.6	53.2	53.7	55.2	55.8	56.8	57.8	53.5	55.8	7915	0	8489	79.0	70.1	73.2	-	
09/13	51.0	50.0	# -	51.2	51.8	52.7	53.2	53.7	55.3	55.9	56.7	57.9	53.4	56.3	8566	0	8494	78.5	71.3	73.2	-	
09/14	50.9	50.0	# -	51.3	51.9	52.7	53.2	53.7	55.3	56.0	56.9	57.9	54.1	56.7	8147	0	8485	77.0	70.8	73.7	-	
09/15	50.9	50.0	# -	51.3	52.0	52.9	53.4	53.8	55.3	55.9	56.9	57.2	54.2	57.0	8240	0	8495	72.0	69.0	69.8	-	
09/16	50.9	50.1	# -	51.4	52.1	52.7	53.4	54.0	55.6	56.3	57.1	56.8	54.2	56.9	7978	0	8484	68.5	66.5	67.5	-	
09/17	? 50.7	50.0	# -	51.1	51.8	52.5	53.0	53.5	54.8	55.3	56.2	56.1	53.7	54.7	7346	0	8008	65.0	61.5	64.0	-	
09/18	50.4	49.5	56.7	51.3	51.7	52.3	52.8	53.4	54.9	55.6	56.4	56.4	54.0	55.6	6901	16	8003	62.5	61.0	62.6	-	
09/19	50.2	49.4	57.1	51.2	51.7	52.4	52.9	53.3	54.6	55.0	55.6	56.2	53.4	55.1	6901	382	7935	65.0	61.5	63.5	-	
09/20	50.1	49.2	57.0	51.3	51.8	52.5	53.0	53.4	54.8	55.4	56.2	56.5	53.4	55.0	6454	1128	7934	72.0	67.3	69.7	-	
09/21	50.3	49.3	56.9	51.6	52.1	52.8	53.4	53.9	55.3	55.8	56.6	56.7	52.5	55.2	6245	1254	7937	76.0	70.2	71.7	-	
09/22	50.4	? 49.4	56.9	51.7	51.9	52.4	53.0	53.5	55.0	55.6	56.4	56.5	51.5	54.0	5727	1489	7938	70.0	65.0	66.3	-	
09/23	50.4	49.7	57.0	51.7	52.4	53.3	53.8	54.3	55.6	56.0	56.6	57.1	51.3	54.6	7408	785	7936	77.5	73.1	75.0	-	
09/24	50.5	49.5	57.0	51.7	52.2	53.1	53.8	54.4	56.0	56.7	57.8	57.4	51.0	54.6	6729	1119	7927	86.0	79.8	81.5	-	
09/25	50.4	49.4	57.0	51.8	52.6	53.8	54.6	55.3	57.1	57.8	58.8	57.8	51.3	55.1	5976	513	7590	90.5	85.6	88.0	-	
09/26	50.6	49.5	56.9	51.6	52.2	53.2	53.9	54.7	56.5	57.3	58.8	57.5	? 51.3	54.9	6777	612	7589	86.0	76.5	79.7	-	
09/27	50.0	49.1	56.7	51.5	52.0	52.8	53.5	54.1	55.7	56.5	57.6	57.3	51.3	55.0	6153	1032	7592	69.5	66.7	65.7	-	
09/28	49.8	48.9	56.8	51.9	52.3	52.6	53.2	53.7	55.2	55.7	56.4	56.5	50.3	53.2	5794	803	7585	62.5	61.3	62.3	-	
09/29	49.7	48.8	56.7	50.4	50.7	51.1	51.7	52.2	53.3	53.8	54.5	55.4	49.2	49.7	6187	1013	7591	53.5	49.7	51.5	-	
09/30	49.9	49.1	56.7	50.4	50.7	51.1	51.5	51.9	52.8	53.1	53.4	55.7	49.4	50.4	6035	1147	7562	56.0	52.4	53.7	-	
-																						
Sep	50.5	49.6	56.9	51.3	51.9	52.7	53.3	53.8	55.3	55.9	56.9	57.3	52.3	55.0	7354	496	8298	73.8	68.9	70.5	-	
															Total CFS	220619	14887	248948				
															Total AF	437589	29528	493778				

Legend

- ? = 1-9 hours of data missing (Average includes estimations)
- ! = 10 or more hours of data missing (Average not calculated)
- # = Station out of service
- ↑ = Record high air temperature
- ↓ = Record low air temperature
- = Monthly Averages

Notes

- 1 Temperatures are weighted averages based on individual penstock flow and temperature
Highlighted cells in the TCD column indicate a TCD change was made on that day
- 2 Current control point (see page 3 for more details)
- 3 DGC is only reported in September
- 4 APR = Airport Road. This is a virtual site interpolated linearly between CCR and BSF based on distance.

D A T E	Redding (RDD) Daily Air Temperatures (°F)																																				
	Actual			Forecasted																																	
	Previous Day			Current Day			1 Day			2 Days			3 Days			4 Days			5 Days			6 Days			7 Days			8 Days			9 Days			10 Days			
	↓	↑	Avg	↓	↑	Avg	↓	↑	Avg	↓	↑	Avg	↓	↑	Avg	↓	↑	Avg	↓	↑	Avg	↓	↑	Avg	↓	↑	Avg	↓	↑	Avg	↓	↑	Avg	↓	↑	Avg	
09/01	62	99	80.5	65	98	81.5	63	99	81.0	63	99	81.0	64	96	80.0	63	94	78.5	60	96	78.0	60	94	77.0	64	90	77.0	59	87	73.0	61	90	75.5	59	92	75.5	
09/02	63	99	81.0	66	96	81.0	63	98	80.5	63	96	79.5	63	90	76.5	60	96	78.0	60	94	77.0	60	93	76.5	61	98	79.5	60	94	77.0	60	89	74.5	59	93	76.0	
09/03	65	100	82.5	61	99	80.0	62	98	80.0	65	94	79.5	60	94	77.0	61	93	77.0	58	90	74.0	57	90	73.5	60	90	75.0	61	94	77.5	62	92	77.0	59	92	75.5	
09/04	61	97	79.0	62	97	79.5	65	97	81.0	61	95	78.0	59	90	74.5	57	86	71.5	57	89	73.0	56	89	72.5	60	97	78.5	60	99	79.5	62	95	78.5	59	93	76.0	
09/05	60	100	80.0	68	98	83.0	61	97	79.0	61	90	75.5	56	89	72.5	56	87	71.5	55	85	70.0	56	89	72.5	60	88	74.0	60	96	78.0	62	93	77.5	59	92	75.5	
09/06	66	99	82.5	60	96	78.0	60	90	75.0	56	89	72.5	55	84	69.5	53	83	68.0	54	89	71.5	57	92	74.5	59	95	77.0	59	97	78.0	58	90	74.0	59	92	75.5	
09/07	59	94	76.5	61	90	75.5	56	88	72.0	54	85	69.5	53	82	67.5	53	88	70.5	57	94	75.5	59	94	76.5	62	93	77.5	62	89	75.5	59	88	73.5	58	89	73.5	
09/08	59	89	74.0	57	87	72.0	56	84	70.0	55	82	68.5	54	88	71.0	56	94	75.0	59	94	76.5	59	94	76.5	63	87	75.0	58	91	74.5	59	90	74.5	58	90	74.0	
09/09	57	87	72.0	58	84	71.0	52	81	66.5	53	88	70.5	57	95	76.0	59	96	77.5	58	94	76.0	58	91	74.5	60	98	79.0	59	97	78.0	59	91	75.0	58	87	72.5	
09/10	57	85	71.0	61	84	72.5	52	89	70.5	57	97	77.0	58	98	78.0	59	96	77.5	59	90	74.5	56	81	68.5	56	82	69.0	57	87	72.0	60	89	74.5	58	91	74.5	
09/11	61	84	72.5	60	90	75.0	56	97	76.5	58	98	78.0	59	97	78.0	59	88	73.5	56	78	67.0	51	78	64.5	55	83	69.0	57	89	73.0	59	90	74.5	57	90	73.5	
09/12	59	91	75.0	67	97	82.0	58	99	78.5	59	98	78.5	57	89	73.0	54	72	63.0	48	78	63.0	53	87	70.0	62	89	75.5	59	93	76.0	61	92	76.5	58	92	75.0	
09/13	63	95	79.0	61	100	80.5	60	98	79.0	57	90	73.5	55	70	62.5	49	78	63.5	52	85	68.5	57	85	71.0	57	81	69.0	57	85	71.0	58	87	72.5	57	89	73.0	
09/14	58	99	78.5	59	97	78.0	56	89	72.5	55	74	64.5	49	80	64.5	53	78	65.5	53	80	66.5	53	85	69.0	64	89	76.5	60	93	76.5	61	92	76.5	58	92	75.0	
09/15	58	96	77.0	58	89	73.5	54	76	65.0	48	80	64.0	53	75	64.0	49	78	63.5	52	85	68.5	54	89	71.5	60	92	76.0	61	94	77.5	61	92	76.5	57	88	72.5	
09/16	55	89	72.0	54	75	64.5	48	79	63.5	53	75	64.0	48	79	63.5	51	87	69.0	55	91	73.0	55	88	71.5	62	91	76.5	59	93	76.0	59	89	74.0	57	87	72.0	
09/17	61	76	68.5	52	78	65.0	54	73	63.5	49	80	64.5	51	86	68.5	53	90	71.5	56	89	72.5	56	89	72.5	67	88	77.5	62	90	76.0	60	89	74.5	57	87	72.0	
09/18	51	79	65.0	59	71	65.0	49	79	64.0	52	85	68.5	54	89	71.5	56	86	71.0	54	86	70.0	57	92	74.5	67	90	78.5	59	84	71.5	60	84	72.0	52	86	69.0	
09/19	54	71	62.5	50	79	64.5	51	84	67.5	55	89	72.0	56	83	69.5	54	86	70.0	57	94	75.5	60	96	78.0	63	92	77.5	60	82	71.0	56	83	69.5	53	85	69.0	
09/20	50	80	65.0	61	85	73.0	55	90	72.5	55	84	69.5	54	86	70.0	57	95	76.0	61	95	78.0	58	86	72.0	58	77	67.5	54	77	65.5	55	79	67.0	52	80	66.0	
09/21	59	85	72.0	62	89	75.5	55	85	70.0	55	88	71.5	59	96	77.5	62	95	78.5	59	86	72.5	51	73	62.0	51	74	62.5	52	80	66.0	53	81	67.0	52	84	68.0	
09/22	62	90	76.0	56	84	70.0	57	87	72.0	63	97	80.0	68	97	82.5	60	89	74.5	53	72	62.5	45	68	56.5	51	72	61.5	52	77	64.5	52	80	66.0	52	83	67.5	
09/23	55	85	70.0	67	86	76.5	62	97	79.5	67	97	82.0	64	93	78.5	56	78	67.0	47	72	59.5	44	68	56.0	54	74	64.0	50	82	66.0	53	83	68.0	53	85	69.0	
09/24	66	89	77.5	74	99	86.5	67	100	83.5	63	96	79.5	58	84	71.0	54	78	66.0	47	74	60.5	44	72	58.0	49	73	61.0	48	81	64.5	51	82	66.5	50	83	66.5	
09/25	73	99	86.0	81	101	91.0	64	98	81.0	58	85	71.5	53	77	65.0	45	72	58.5	43	69	56.0	41	72	56.5	48	80	64.0	50	83	66.5	52	80	66.0	51	80	65.5	
09/26	81	100	90.5	79	96	87.5	57	80	68.5	50	72	61.0	43	69	56.0	43	71	57.0	44	75	59.5	44	79	61.5	51	81	66.0	53	83	68.0	53	77	65.0	51	82	66.5	
09/27	73	99	86.0	64	79	71.5	49	71	60.0	41	66	53.5	41	66	53.5	42	76	59.0	45	77	61.0	46	76	61.0	53	79	66.0	51	83	67.0	54	80	67.0	54	85	69.5	
09/28	63	76	69.5	61	72	66.5	42	66	54.0	41	67	54.0	43	75	59.0	45	81	63.0	46	79	62.5	47	77	62.0	55	80	67.5	52	81	66.5	51	79	65.0	51	76	63.5	
09/29	52	73	62.5	41	65	53.0	42	68	55.0	43	75	59.0	45	80	62.5	48	80	64.0	48	79	63.5	49	82	65.5	54	85	69.5	54	84	69.0	55	82	68.5	51	82	66.5	
09/30	41	66	53.5	47	65	56.0	43	73	58.0	46	79	62.5	47	79	63.0	48	80	64.0	50	84	67.0	52	86	69.0	55	86	70.5	54	85	69.5	53	81	67.0	51	82	66.5	
-																																					

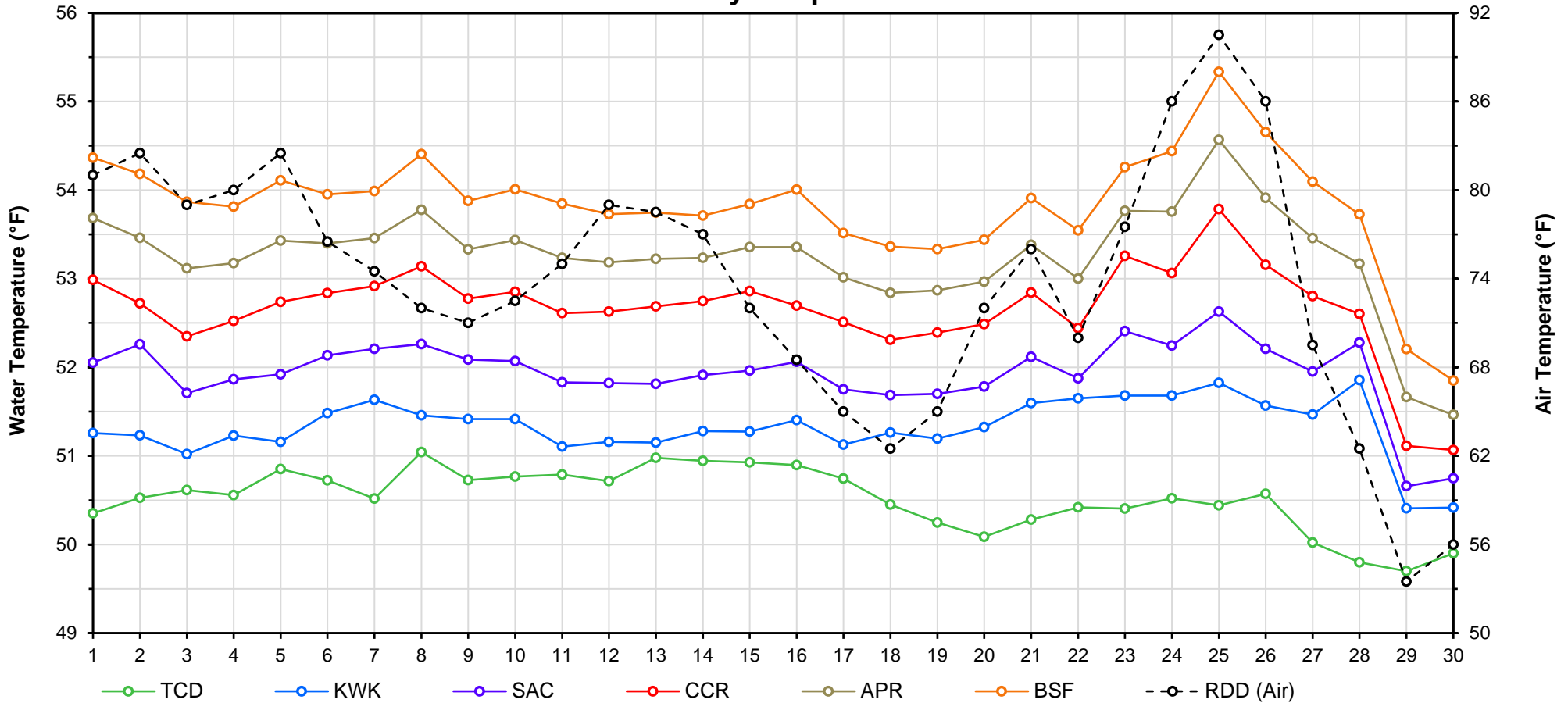
Web Links

- [10-Day Min/Max Forecast](#)
- [Previous Days Min/Max Actuals](#)

Legend

- NR = Forecasted temperatures not recorded
- 100** = Previous day actual temperatures in red and bold indicate a record temperature for that date

Mean Daily Temperatures



Station Details			
Code	Body of Water	Location ¹	CDEC Link
TCD	N/A	Shasta Power Plant	N/A
SHD	Sacramento River	0.3 miles downstream of Shasta Power Plant	Click Here
SPP	N/A	Spring Creek Power Plant	N/A
KWK	Sacramento River	0.8 miles downstream of Keswick Dam	Click Here
SAC	Sacramento River	4.8 miles downstream of Keswick Dam	Click Here
CCR	Sacramento River	9.7 miles downstream of Keswick Dam	Click Here
BSF	Sacramento River	25 miles downstream of Keswick Dam	Click Here
JLF	Sacramento River	34 miles downstream of Keswick Dam	Click Here
BND	Sacramento River	41 miles downstream of Keswick Dam	Click Here
RDB	Sacramento River	58 miles downstream of Keswick Dam	Click Here
IGO	Clear Creek	7.3 miles downstream of Whiskeytown Dam	Click Here
LWS	Trinity River	1.1 miles downstream of Lewiston Dam	Click Here
DGC ²	Trinity River	19 miles downstream of Lewiston Dam	Click Here
NFH ³	Trinity River	38 miles downstream of Lewiston Dam	Click Here

Temperature Control Point		
Point	Temp. (°F)	Begin Date
BSF	56.0	5/15/2019

Notes

¹ Distances are approximate

² DGC is only reported in September

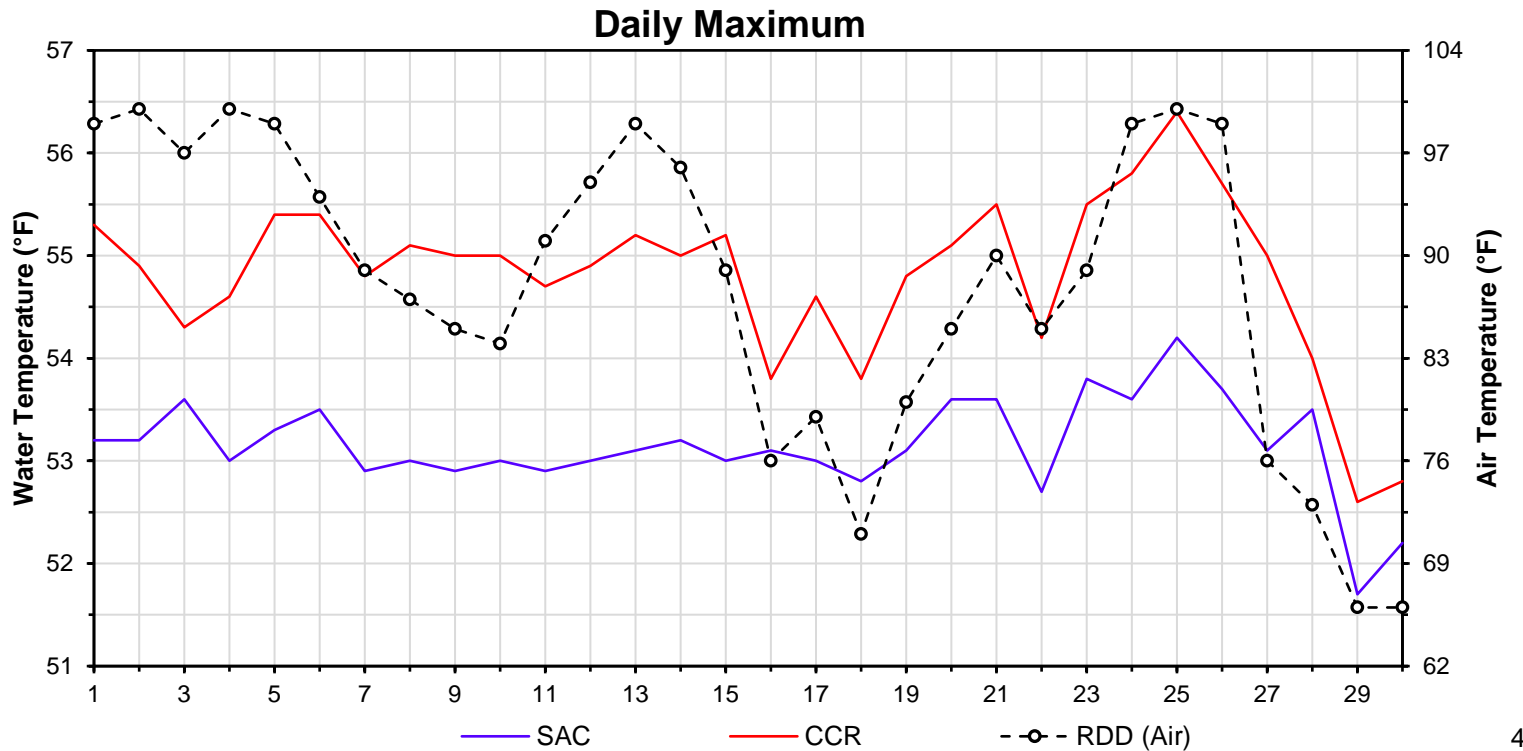
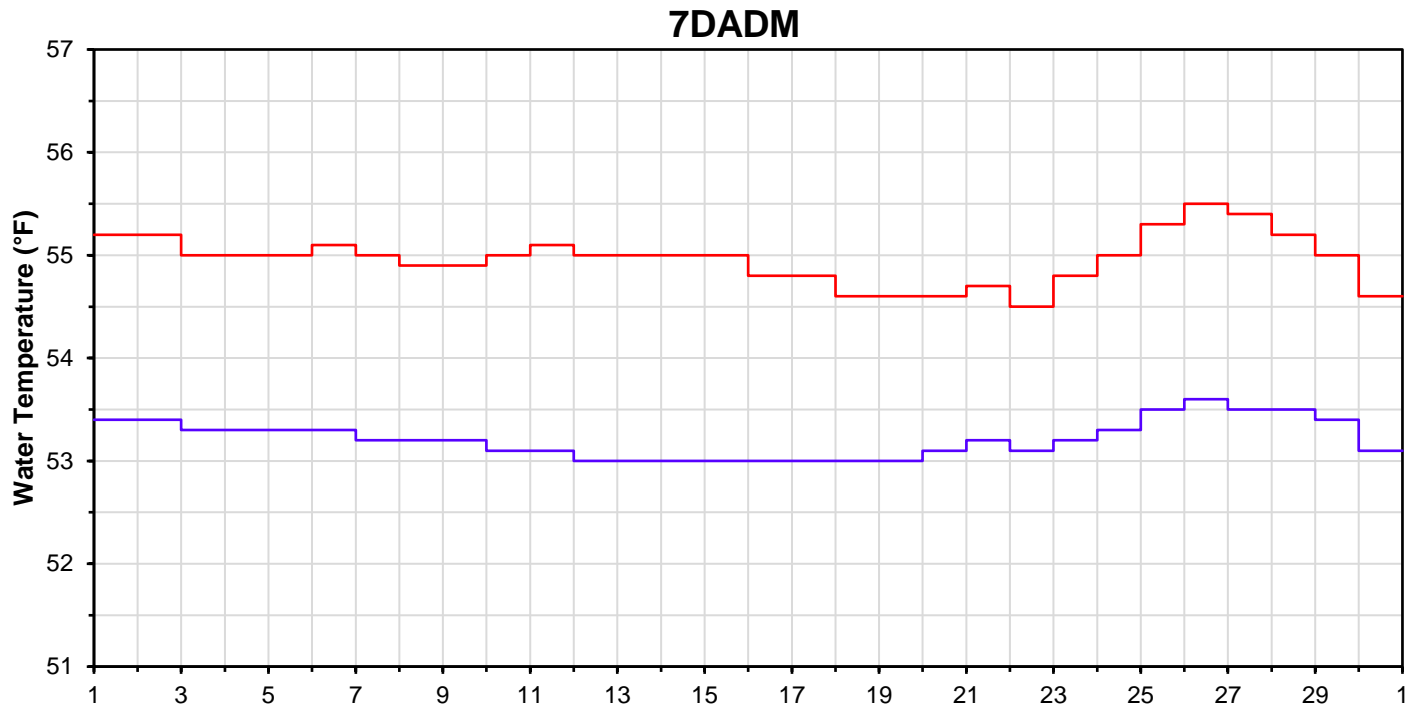
³ NFH is only reported in October, November and December

DATE	Daily Max		7DADM ¹		DAT ²
	SAC	CCR	SAC	CCR	BSF
09/01	53.2	55.3	53.4	55.2	54.4
09/02	53.2	54.9	53.4	55.2	54.2
09/03	53.6	54.3	53.3	55.0	53.9
09/04	53.0	54.6	53.3	55.0	53.8
09/05	53.3	55.4	53.3	55.0	54.1
09/06	53.5	55.4	53.3	55.1	54.0
09/07	52.9	54.8	53.2	55.0	54.0
09/08	53.0	55.1	53.2	54.9	54.4
09/09	52.9	55.0	53.2	54.9	53.9
09/10	53.0	55.0	53.1	55.0	54.0
09/11	52.9	54.7	53.1	55.1	53.8
09/12	53.0	54.9	53.0	55.0	53.7
09/13	53.1	55.2	53.0	55.0	53.7
09/14	53.2	55.0	53.0	55.0	53.7
09/15	53.0	55.2	53.0	55.0	53.8
09/16	53.1	53.8	53.0	54.8	54.0
09/17	53.0	54.6	53.0	54.8	53.5
09/18	52.8	53.8	53.0	54.6	53.4
09/19	53.1	54.8	53.0	54.6	53.3
09/20	53.6	55.1	53.1	54.6	53.4
09/21	53.6	55.5	53.2	54.7	53.9
09/22	52.7	54.2	53.1	54.5	53.5
09/23	53.8	55.5	53.2	54.8	54.3
09/24	53.6	55.8	53.3	55.0	54.4
09/25	54.2	56.4	53.5	55.3	55.3
09/26	53.7	55.7	53.6	55.5	54.7
09/27	53.1	55.0	53.5	55.4	54.1
09/28	53.5	54.0	53.5	55.2	53.7
09/29	51.7	52.6	53.4	55.0	52.2
09/30	52.2	52.8	53.1	54.6	51.9
-					

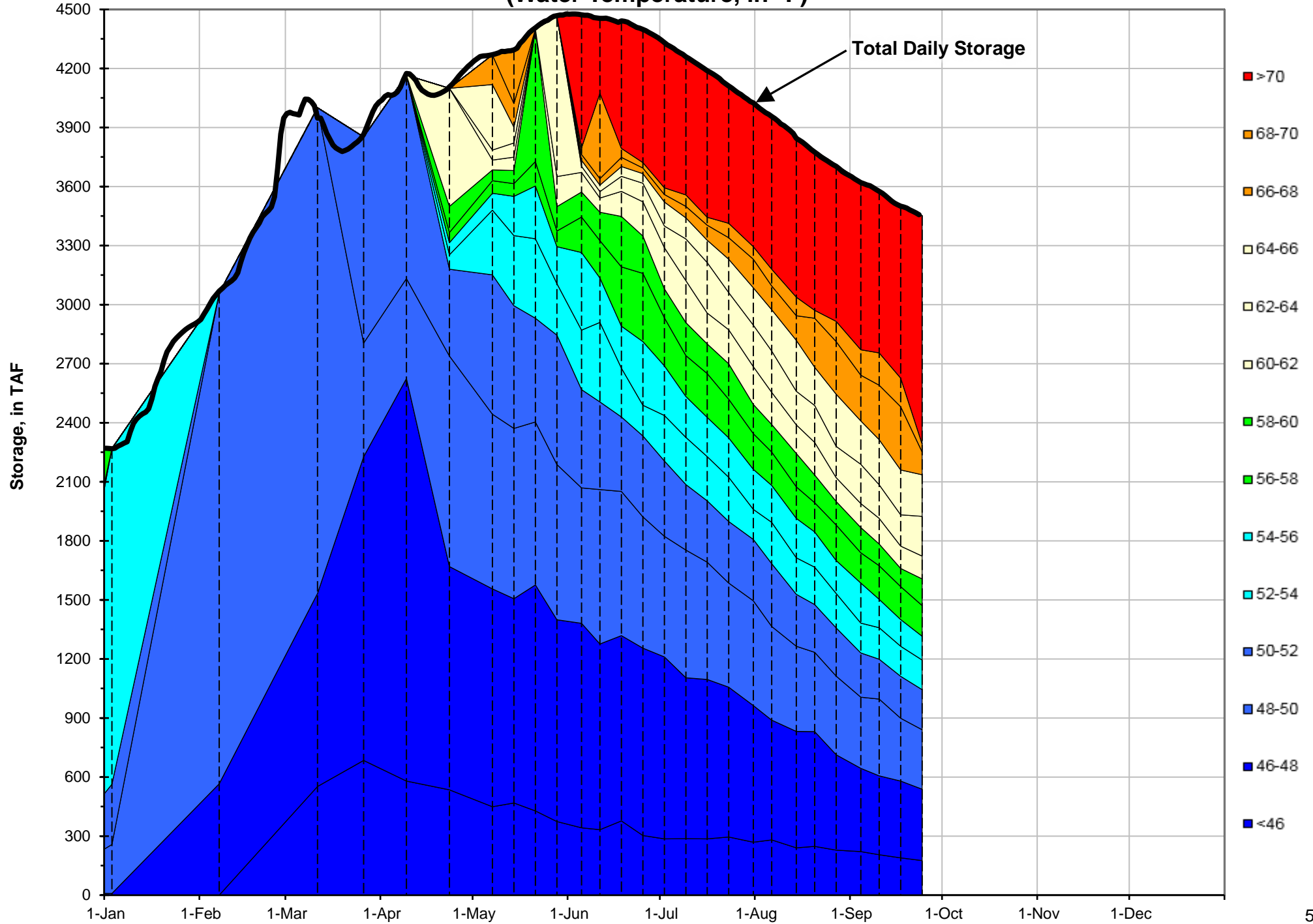
Notes

¹ 7DADM = 7-Day Average
Daily Maximum

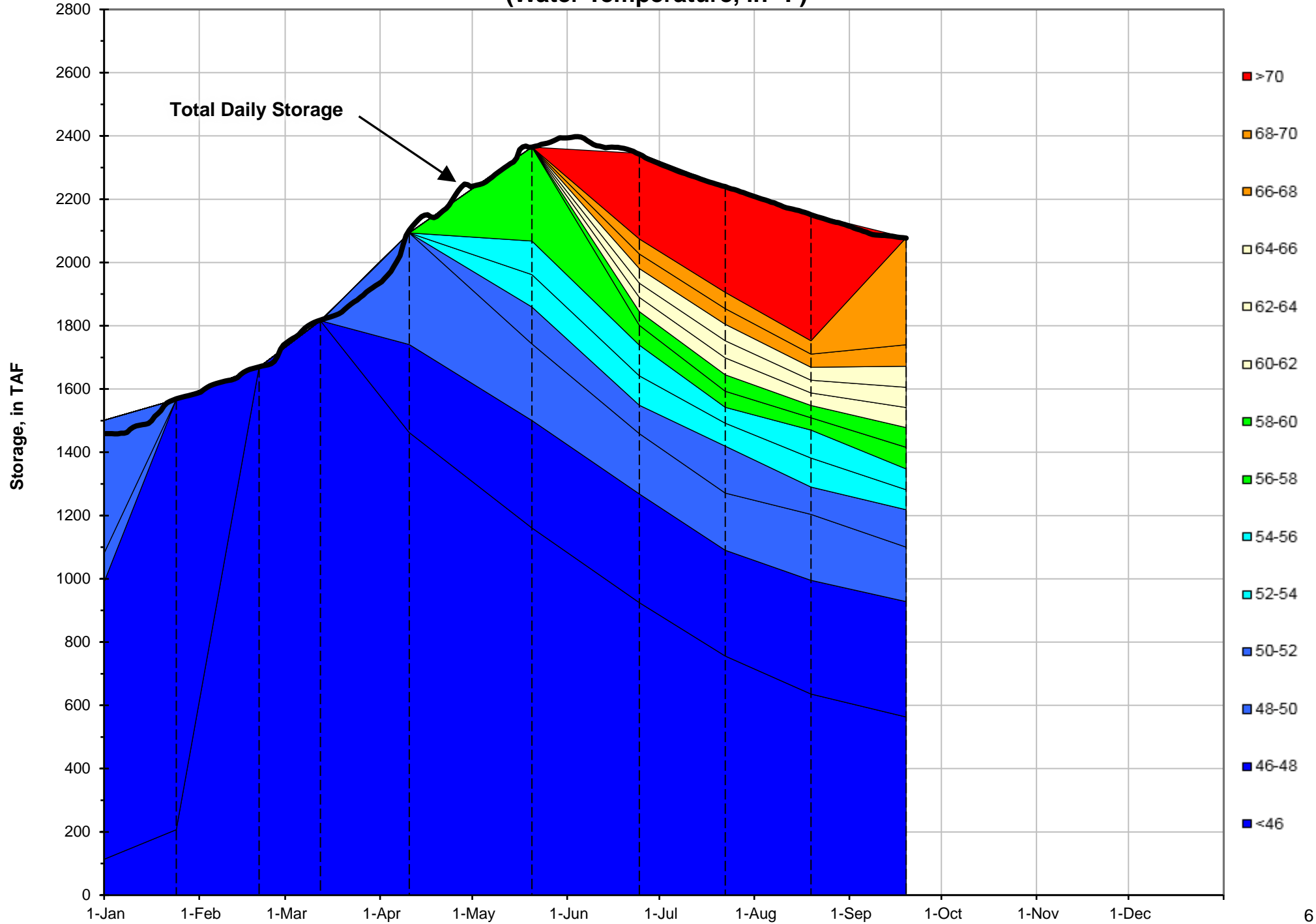
² DAT = Daily Average
Temperature



Shasta Lake Isothermobaths - 2019 (Water Temperature, in °F)



Trinity Lake Isothermobaths - 2019 (Water Temperature, in °F)



Whiskeytown Lake Isothermobaths - 2019 (Water Temperature, in °F)

