

# Northern CVP Water Temperature Report

## September - 2017

Page	Description
1	- Mean Daily Water Temperature, Release Flow Rates and Air Temperatures with Monthly Averages
2	- Redding 10-Day Forecasted Air Temperatures
3	- Sacramento River Mean Daily Water Temperature, Air Temperature and 10-Day Forecasted Air Temperature Plot - Water Temperature Measuring Station Details - Temperature Control Point Details
4	- Lake Shasta Isothermalbaths Plot
5	- Daily Maximum and 7DADM
x	- <a href="#">TCD Configuration</a> (External Link)



All Data in this Report is Preliminary and Subject to Change

DATE	Mean Daily Water Temperatures (°F)													Mean Daily Release (CFS)			Mean Daily Air Temperatures (°F)				
	TCD <sup>1</sup>	SHD	SPP <sup>1</sup>	KWK	SAC	CCR	BSF <sup>2</sup>	JLF	BND	RDB	IGO	LWS	DGC <sup>3</sup>	Shasta Generation	Spring Creek P.P.	Keswick Total	RDD	BSF	RDB	LWS	
Aug	50.8	49.9	54.6	51.8	52.3	52.8	54.7	56.1	56.8	58.5	58.7	50.6	-	8348	1246	9528	85.9	79.2	79.2	74.7	
09/01	50.4	49.3	54.8	51.6	52.0	52.6	54.5	55.8	56.6	58.1	58.2	50.5	54.8	7143	1362	8433	↑	91.5	80.3	85.8	72.0
09/02	50.5	? 49.5	54.9	51.7	52.1	52.6	54.4	55.7	56.4	57.9	58.0	50.1	55.2	6705	1542	8457	↑	90.5	82.0	85.3	71.5
09/03	50.3	49.4	54.9	51.8	52.2	52.7	54.5	55.8	56.6	58.0	58.0	50.0	54.5	6919	1146	8502		92.0	83.0	85.7	70.5
09/04	50.3	49.4	54.8	51.6	52.1	52.6	54.5	56.0	56.8	58.3	58.2	50.2	54.6	7336	1143	8499		92.0	82.5	83.0	74.2
09/05	50.8	49.6	54.9	51.6	52.1	52.7	54.7	56.1	56.9	58.5	58.4	50.4	55.6	7336	1225	8506		84.5	78.5	78.5	74.9
09/06	50.9	49.7	54.9	52.0	52.5	53.0	54.9	56.4	57.2	58.8	58.4	50.9	56.7	6592	1452	8505		85.0	80.1	80.1	75.5
09/07	49.7	48.9	54.9	52.2	52.5	53.0	54.7	56.2	57.1	58.6	57.5	50.6	55.9	6669	922	8506		73.0	70.9	72.3	65.9
09/08	49.3	48.7	? 54.9	51.1	51.8	52.6	54.5	55.8	56.4	57.8	57.9	50.9	56.2	7576	594	8474		77.5	73.0	74.5	69.3
09/09	49.5	49.0	54.7	50.5	51.1	51.7	53.6	55.1	55.9	57.8	58.0	50.8	56.9	7400	1056	8353		82.0	76.1	77.6	69.5
09/10	49.5	48.9	54.9	50.8	51.3	51.8	53.6	55.0	55.6	57.2	58.0	50.7	56.2	7188	1370	8377		86.0	78.0	81.1	70.2
09/11	49.6	48.9	54.8	50.8	51.3	52.1	53.9	55.3	56.0	57.4	58.1	50.8	56.2	7135	1093	8402		92.0	78.0	80.4	72.7
09/12	49.6	49.1	54.8	51.1	51.6	52.3	54.2	55.7	56.5	!	-	58.5	51.2	6957	1222	8405	↑	90.5	82.6	-	75.5
09/13	49.5	49.0	54.9	51.3	51.8	52.5	54.4	56.0	? 56.7	!	-	58.0	51.0	6523	1295	8405		80.5	74.8	-	72.5
09/14	49.8	49.2	54.9	51.2	51.5	52.1	53.6	55.0	55.8	57.3	55.6	50.5	55.7	7077	1229	8313		68.5	66.6	66.0	63.8
09/15	49.8	49.0	54.7	51.2	51.6	52.1	53.4	54.4	54.9	55.9	55.1	50.3	53.9	6568	1357	8353		72.5	67.8	69.9	58.8
09/16	49.9	49.2	54.7	50.9	51.1	51.5	52.9	53.9	54.5	55.6	? 54.6	50.1	53.4	7091	1360	8352		70.5	64.5	66.9	59.6
09/17	50.1	49.3	54.7	50.9	51.2	51.7	52.9	53.8	54.2	55.0	? 54.8	50.0	53.5	6947	1359	8344		71.0	65.3	67.6	62.0
09/18	50.2	? 49.5	54.7	51.3	51.5	51.9	53.2	54.2	54.8	55.7	55.0	49.8	54.4	7260	1360	8377		72.0	68.8	67.7	62.0
09/19	50.0	49.4	54.9	51.0	51.3	51.8	53.2	54.1	54.5	55.4	54.3	49.7	52.9	7611	1009	8407		63.5	62.5	66.3	57.1
09/20	50.4	49.5	55.1	51.0	51.2	51.7	53.1	53.9	54.4	55.3	54.5	50.4	53.8	7380	627	8404		69.0	65.0	65.1	56.2
09/21	50.4	49.5	54.7	50.9	51.1	51.5	52.6	53.3	53.7	54.5	54.1	50.0	52.2	7380	307	8406	↓	60.5	57.4	61.8	50.3
09/22	50.6	49.4	54.9	50.8	51.0	51.5	52.6	53.4	53.9	54.7	54.3	50.2	52.4	7607	735	8407	↓	63.0	60.3	62.3	52.1
09/23	50.5	49.5	54.6	50.9	51.1	51.5	52.6	53.2	53.6	54.4	53.9	49.9	52.1	7683	545	8395		67.0	60.9	65.3	52.0
09/24	50.9	49.8	54.6	50.9	51.2	51.6	52.7	53.4	53.8	54.5	54.1	49.9	52.2	8543	236	8356		69.0	64.5	67.9	54.5
09/25	50.6	49.7	54.6	51.1	51.3	51.7	52.8	53.6	54.0	54.8	54.5	49.9	52.6	7478	661	8438		73.0	66.3	71.2	57.4
09/26	50.8	49.8	54.6	51.4	51.8	52.3	53.5	54.3	54.7	55.4	54.9	49.8	53.2	7344	714	8457		79.0	72.0	74.2	61.1
09/27	50.9	49.9	54.6	51.2	51.6	52.1	53.4	54.3	54.8	55.9	54.7	49.8	53.2	7314	768	8458		73.0	68.1	72.9	61.0
09/28	51.0	50.0	54.6	51.4	51.8	52.2	53.3	54.1	54.6	55.4	54.5	49.8	52.6	7889	601	8458		72.0	65.3	68.7	60.1
09/29	51.0	50.0	54.6	51.3	51.5	51.9	53.1	53.9	54.4	55.3	54.3	49.9	52.7	7635	702	8446		71.5	65.0	67.1	60.4
09/30	50.9	50.1	54.6	51.3	51.7	52.1	53.2	53.9	54.3	55.0	54.8	49.8	53.0	7932	493	8401		70.0	64.7	68.7	59.6
-																					
Sep	50.3	49.4	54.8	51.2	51.6	52.1	53.6	54.7	55.3	56.4	56.1	50.3	54.3	7274	983	8420		76.7	70.8	72.6	64.1
														Total CFS	218218	29485	252596				
														Total AF	432826	58482	501014				

Legend

- ? = 1-9 hours of data missing (Average includes estimations)
- ! = 10 or more hours of data missing (Average not calculated)
- # = Station out of service
- ↑ = Record high air temperature
- ↓ = Record low air temperature
- = Monthly Averages

Notes

- <sup>1</sup> Temperatures are weighted averages based on individual penstock flow and temperature
- Highlighted cells in the TCD column indicate a TCD change was made on that day
- <sup>2</sup> Current control point (see page 3 for more details)
- <sup>3</sup> DGC is only reported in September

D A T E	Redding (RDD) Daily Air Temperatures (°F)																																					
	Actual			Forecasted																																		
	Previous Day			Current Day			1 Day			2 Days			3 Days			4 Days			5 Days			6 Days			7 Days			8 Days			9 Days			10 Days				
	↓	↑	Avg	↓	↑	Avg	↓	↑	Avg	↓	↑	Avg	↓	↑	Avg	↓	↑	Avg	↓	↑	Avg	↓	↑	Avg	↓	↑	Avg	↓	↑	Avg	↓	↑	Avg	↓	↑	Avg		
09/01	70	106	88.0	76	111	93.5	69	112	90.5	69	109	89.0	70	106	88.0	73	101	87.0	71	99	85.0	69	100	84.5	66	96	81.0	64	97	80.5	64	95	79.5	62	96	79.0		
09/02	71	<b>112</b>	91.5	NR	113	-	71	111	91.0	71	105	88.0	67	103	85.0	67	98	82.5	63	94	78.5	61	92	76.5	63	91	77.0	64	97	80.5	64	96	80.0	62	95	78.5		
09/03	67	<b>114</b>	90.5	74	111	92.5	71	103	87.0	67	102	84.5	67	97	82.0	63	93	78.0	61	91	76.0	59	92	75.5	63	92	77.5	61	88	74.5	60	87	73.5	60	91	75.5		
09/04	73	111	92.0	83	107	95.0	67	100	83.5	67	95	81.0	64	91	77.5	62	93	77.5	62	94	78.0	63	97	80.0	68	103	85.5	67	101	84.0	66	96	81.0	62	95	78.5		
09/05	80	104	92.0	73	98	85.5	66	94	80.0	61	86	73.5	59	89	74.0	61	95	78.0	64	100	82.0	66	101	83.5	69	98	83.5	65	93	79.0	61	88	74.5	59	91	75.0		
09/06	72	97	84.5	73	95	84.0	63	86	74.5	60	91	75.5	60	96	78.0	62	102	82.0	64	103	83.5	65	101	83.0	69	94	81.5	63	87	75.0	62	88	75.0	59	93	76.0		
09/07	73	97	85.0	68	86	77.0	60	92	76.0	60	96	78.0	63	101	82.0	65	103	84.0	64	100	82.0	63	94	78.5	67	92	79.5	63	88	75.5	61	86	73.5	58	90	74.0		
09/08	66	80	73.0	64	92	78.0	61	96	78.5	63	102	82.5	66	101	83.5	65	96	80.5	63	93	78.0	60	91	75.5	60	90	75.0	58	88	73.0	60	89	74.5	58	90	74.0		
09/09	63	92	77.5	65	97	81.0	63	102	82.5	66	103	84.5	66	96	81.0	64	93	78.5	58	89	73.5	56	92	74.0	58	91	74.5	59	87	73.0	60	88	74.0	58	90	74.0		
09/10	65	99	82.0	65	102	83.5	66	103	84.5	66	97	81.5	63	93	78.0	58	87	72.5	53	90	71.5	55	90	72.5	59	92	75.5	60	88	74.0	59	86	72.5	58	87	72.5		
09/11	66	106	86.0	82	104	93.0	67	97	82.0	64	93	78.5	59	85	72.0	53	87	70.0	53	89	71.0	55	92	73.5	59	90	74.5	57	82	69.5	57	88	72.5	58	92	75.0		
09/12	81	103	92.0	78	98	88.0	64	93	78.5	58	84	71.0	53	87	70.0	52	87	69.5	53	86	69.5	54	79	66.5	54	78	66.0	56	81	68.5	58	83	70.5	54	87	70.5		
09/13	78	<b>103</b>	90.5	70	96	83.0	59	86	72.5	53	88	70.5	54	87	70.5	53	84	68.5	53	78	65.5	50	78	64.0	56	82	69.0	57	86	71.5	57	90	73.5	59	90	74.5		
09/14	69	92	80.5	65	85	75.0	54	87	70.5	54	87	70.5	53	86	69.5	52	76	64.0	48	73	60.5	48	78	63.0	55	78	66.5	54	80	67.0	56	85	70.5	56	89	72.5		
09/15	63	74	68.5	57	87	72.0	55	87	71.0	54	87	70.5	54	79	66.5	49	75	62.0	49	78	63.5	50	80	65.0	57	78	67.5	55	83	69.0	57	88	72.5	58	91	74.5		
09/16	56	89	72.5	56	88	72.0	53	87	70.0	56	81	68.5	49	79	64.0	51	77	64.0	48	76	62.0	48	83	65.5	57	85	71.0	58	90	74.0	60	90	75.0	58	91	74.5		
09/17	54	87	70.5	54	86	70.0	55	80	67.5	48	78	63.0	53	73	63.0	47	75	61.0	48	79	63.5	51	86	68.5	60	90	75.0	59	93	76.0	58	89	73.5	56	89	72.5		
09/18	54	88	71.0	65	79	72.0	47	76	61.5	53	71	62.0	44	74	59.0	46	79	62.5	48	84	66.0	52	90	71.0	60	88	74.0	61	91	76.0	62	90	76.0	59	91	75.0		
09/19	63	81	72.0	51	75	63.0	53	73	63.0	44	72	58.0	44	77	60.5	47	84	65.5	50	88	69.0	53	91	72.0	61	90	75.5	58	91	74.5	60	90	75.0	57	90	73.5		
09/20	49	78	63.5	63	74	68.5	44	72	58.0	45	76	60.5	48	82	65.0	51	88	69.5	54	91	72.5	56	93	74.5	62	93	77.5	59	92	75.5	60	91	75.5	59	90	74.5		
09/21	59	79	69.0	48	73	60.5	42	75	58.5	49	82	65.5	52	87	69.5	55	91	73.0	58	93	75.5	58	93	75.5	59	91	75.0	58	88	73.0	56	86	71.0	56	87	71.5		
09/22	<b>46</b>	75	60.5	50	76	63.0	50	82	66.0	53	86	69.5	56	90	73.0	60	93	76.5	60	92	76.0	60	92	76.0	63	94	78.5	61	94	77.5	61	91	76.0	58	90	74.0		
09/23	<b>49</b>	77	63.0	55	81	68.0	52	85	68.5	56	90	73.0	59	93	76.0	60	93	76.5	59	92	75.5	60	93	76.5	61	92	76.5	61	93	77.0	61	88	74.5	54	84	69.0		
09/24	53	81	67.0	55	85	70.0	57	91	74.0	60	93	76.5	60	93	76.5	59	93	76.0	58	93	75.5	58	93	75.5	62	91	76.5	60	87	73.5	56	79	67.5	51	79	65.0		
09/25	54	84	69.0	57	90	73.5	59	92	75.5	59	93	76.0	58	92	75.0	58	92	75.0	59	92	75.5	60	94	77.0	61	93	77.0	58	89	73.5	56	85	70.5	55	85	70.0		
09/26	56	90	73.0	68	92	80.0	59	92	75.5	56	92	74.0	56	88	72.0	56	87	71.5	54	88	71.0	55	80	67.5	59	83	71.0	56	88	72.0	55	86	70.5	55	86	70.5		
09/27	65	93	79.0	54	92	73.0	56	91	73.5	56	86	71.0	55	84	69.5	52	82	67.0	54	80	67.0	54	79	66.5	59	81	70.0	54	83	68.5	53	79	66.0	50	78	64.0		
09/28	53	93	73.0	53	91	72.0	55	85	70.0	56	84	70.0	52	85	68.5	53	78	65.5	51	78	64.5	50	78	64.0	56	83	69.5	56	77	66.5	54	79	66.5	53	82	67.5		
09/29	52	92	72.0	58	86	72.0	56	84	70.0	53	80	66.5	49	74	61.5	49	77	63.0	50	77	63.5	49	80	64.5	54	84	69.0	54	86	70.0	54	87	70.5	53	84	68.5		
09/30	58	85	71.5	54	83	68.5	53	79	66.0	48	75	61.5	49	78	63.5	51	80	65.5	48	81	64.5	50	82	66.0	55	88	71.5	58	91	74.5	57	84	70.5	53	82	67.5		
-																																						

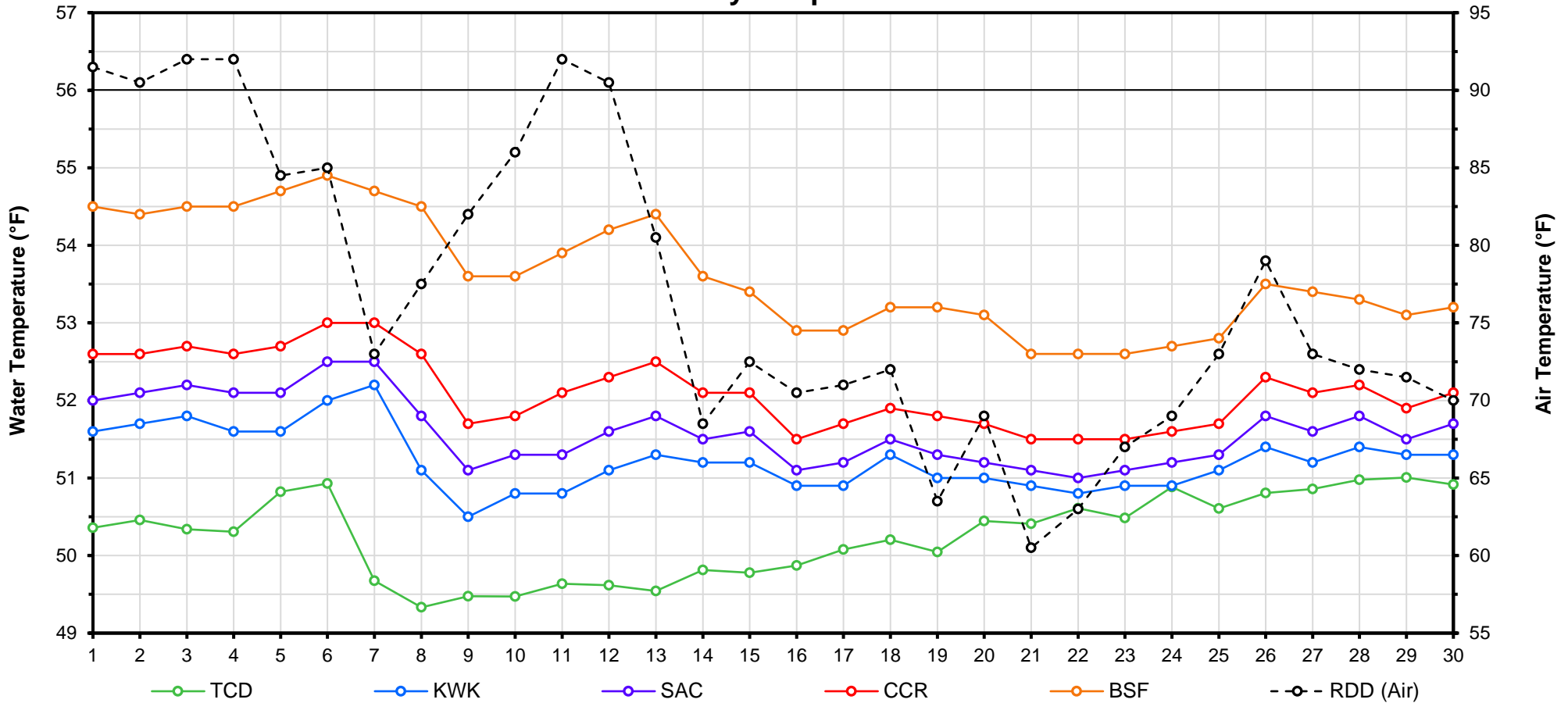
Web Links

- [10-Day Min/Max Forecast](#)
- [Previous Days Min/Max Actuals](#)

Legend

- NR = Forecasted temperatures not recorded
- 100** = Previous day actual temperatures in red and bolded indicate a record temperature for that date

## Mean Daily Temperatures



Station Details			
Code	Body of Water	Location <sup>1</sup>	CDEC Link
TCD	N/A	Shasta Power Plant	N/A
SHD	Sacramento River	0.3 miles downstream of Shasta Power Plant	<a href="#">Click Here</a>
SPP	N/A	Spring Creek Power Plant	N/A
KWK	Sacramento River	0.8 miles downstream of Keswick Dam	<a href="#">Click Here</a>
SAC	Sacramento River	4.8 miles downstream of Keswick Dam	<a href="#">Click Here</a>
CCR	Sacramento River	9.7 miles downstream of Keswick Dam	<a href="#">Click Here</a>
BSF	Sacramento River	25 miles downstream of Keswick Dam	<a href="#">Click Here</a>
JLF	Sacramento River	34 miles downstream of Keswick Dam	<a href="#">Click Here</a>
BND	Sacramento River	41 miles downstream of Keswick Dam	<a href="#">Click Here</a>
RDB	Sacramento River	58 miles downstream of Keswick Dam	<a href="#">Click Here</a>
IGO	Clear Creek	7.3 miles downstream of Whiskeytown Dam	<a href="#">Click Here</a>
LWS	Trinity River	1.1 miles downstream of Lewiston Dam	<a href="#">Click Here</a>
DGC <sup>2</sup>	Trinity River	19 miles downstream of Lewiston Dam	<a href="#">Click Here</a>
NFH <sup>3</sup>	Trinity River	38 miles downstream of Lewiston Dam	<a href="#">Click Here</a>

Temperature Control Point		
Point	Temp. (°F)	Date Range
<b>BSF</b>	<b>56.0</b>	<b>06/01/17 - Current</b>

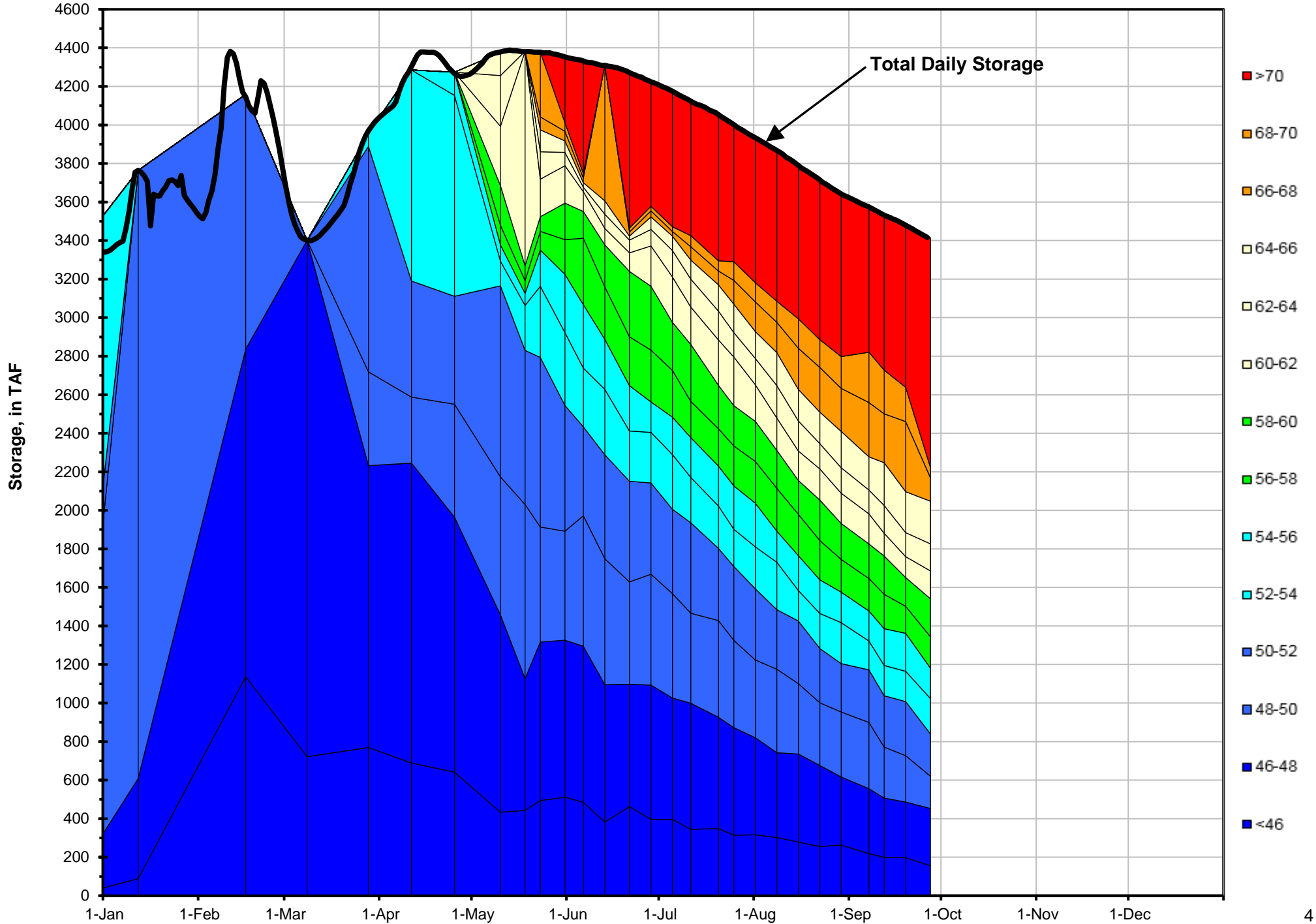
### Notes

<sup>1</sup> Distances are approximate

<sup>2</sup> DGC is only reported in September

<sup>3</sup> NFH is only reported in October, November and December

# Lake Shasta Isothermalbaths - 2017 (Water Temperature, in °F)



DATE	Daily Max		7DADM <sup>1</sup>		DAT <sup>2</sup>
	SAC	CCR	SAC	CCR	BSF
09/01	53.0	54.0	53.3	54.4	54.5
09/02	52.9	53.9	53.3	54.3	54.4
09/03	53.0	53.9	53.3	54.3	54.5
09/04	52.7	53.8	53.2	54.2	54.5
09/05	53.0	54.0	53.1	54.1	54.7
09/06	53.6	54.6	53.1	54.1	54.9
09/07	53.0	53.5	53.0	54.0	54.7
09/08	52.7	53.9	53.0	53.9	54.5
09/09	52.1	53.5	52.9	53.9	53.6
09/10	52.3	53.7	52.8	53.9	53.6
09/11	52.5	53.9	52.7	53.9	53.9
09/12	52.7	53.9	52.7	53.9	54.2
09/13	53.0	54.3	52.6	53.8	54.4
09/14	52.3	53.2	52.5	53.8	53.6
09/15	53.0	53.8	52.6	53.8	53.4
09/16	52.1	52.9	52.6	53.7	52.9
09/17	52.5	53.5	52.6	53.6	52.9
09/18	52.5	53.2	52.6	53.5	53.2
09/19	52.4	53.4	52.5	53.5	53.2
09/20	52.2	53.1	52.4	53.3	53.1
09/21	52.5	53.4	52.5	53.3	52.6
09/22	52.6	53.3	52.4	53.3	52.6
09/23	52.4	53.4	52.4	53.3	52.6
09/24	52.5	53.6	52.4	53.3	52.7
09/25	52.7	53.5	52.5	53.4	52.8
09/26	53.1	54.0	52.6	53.5	53.5
09/27	52.9	53.8	52.7	53.6	53.4
09/28	53.0	54.0	52.7	53.7	53.3
09/29	52.2	53.0	52.7	53.6	53.1
09/30	52.8	53.8	52.7	53.7	53.2
-					

**Notes**

<sup>1</sup> 7DADM = 7-Day Average Daily Maximum

<sup>2</sup> DAT = Daily Average Temperature

