

Northern CVP Water Temperature Report

September - 2016

Page	Description
1	- Mean Daily Water Temperature, Release Flow Rates and Air Temperatures with Monthly Averages
2	- Redding 10-Day Forecasted Air Temperatures
3	- Sacramento River Mean Daily Water Temperature, Air Temperature and 10-Day Forecasted Air Temperature Plot - Water Temperature Measuring Station Details - Temperature Control Point Details
4	- Lake Shasta Isothermalbaths Plot
5	- Daily Maximum and 7DADM
x	- TCD Configuration (External Link)



All Data in this Report is Preliminary and Subject to Change

DATE	Mean Daily Water Temperatures (°F)													Mean Daily Release (CFS)			Mean Daily Air Temperatures (°F)				
	TCD ¹	SHD	SPP ¹	KWK	SAC	CCR	BSF ²	JLF	BND	RDB	IGO	LWS	DGC ³	Shasta Generation	Spring Creek P.P.	Keswick Total	RDD	BSF	RDB	LWS	
Aug	51.0	50.1	56.8	51.9	52.5	53.0	54.7	55.9	56.5	58.3	58.5	55.3	-	9053	790	10146	82.1	76.5	76.6	74.2	
09/01	51.1	50.1	57.4	51.6	52.1	52.6	53.9	55.0	55.4	56.9	58.2	!	-	54.2	9132	329	9466	76.5	71.0	71.8	-
09/02	51.2	50.2	57.5	51.6	52.1	52.6	54.0	55.1	55.5	56.9	58.2	51.7	54.2	8896	403	9416	77.0	71.3	72.5	64.8	
09/03	51.1	50.1	57.4	51.6	52.1	52.7	54.1	55.0	55.5	56.8	58.0	51.6	53.9	8659	250	9439	79.5	69.0	71.6	63.3	
09/04	51.4	50.2	57.3	51.6	52.1	52.6	54.0	55.0	55.5	56.9	57.7	51.5	53.6	8831	249	9437	72.5	70.0	68.3	61.3	
09/05	50.8	50.0	57.7	51.7	52.1	52.6	53.8	54.7	55.2	56.5	57.5	51.4	53.3	9656	14	9451	77.5	68.9	71.7	60.5	
09/06	50.1	49.3	57.4	51.1	51.8	52.4	53.8	54.8	55.2	56.4	57.8	51.4	53.5	8495	328	9016	76.0	70.8	73.6	63.8	
09/07	50.9	50.0	57.4	50.7	51.4	52.1	53.8	54.9	55.4	56.9	56.8	51.4	53.9	9035	14	9008	84.0	78.6	78.8	66.8	
09/08	50.8	50.1	57.5	51.0	51.4	51.9	53.3	54.4	55.0	56.6	56.6	51.4	54.0	8306	564	9031	79.0	73.6	75.4	69.0	
09/09	50.8	50.2	57.5	51.7	52.4	53.0	54.3	55.2	55.6	56.7	56.7	51.4	54.1	7538	560	8583	82.5	77.8	79.3	69.8	
09/10	50.9	50.1	57.5	51.6	52.2	52.8	54.4	55.4	56.0	57.6	56.2	51.4	53.9	8335	307	8546	80.5	74.5	75.7	70.1	
09/11	51.2	50.3	57.5	51.5	52.2	52.7	54.3	55.5	56.0	57.5	56.8	51.5	54.1	7957	405	8545	77.0	71.9	71.8	69.5	
09/12	51.2	50.3	57.6	51.9	52.4	52.9	54.3	55.3	55.9	57.3	56.4	51.5	53.6	7609	483	8547	73.0	67.5	66.7	63.5	
09/13	51.2	50.3	57.6	51.7	52.3	52.8	54.2	55.1	55.6	56.8	55.6	51.6	53.4	7880	483	8545	64.0	61.4	61.2	59.9	
09/14	51.5	50.5	57.6	51.7	52.3	52.7	54.0	54.8	55.2	56.4	55.7	51.5	53.6	7988	405	8547	67.5	62.7	64.3	60.9	
09/15	51.1	50.2	57.6	51.9	52.4	52.9	54.0	54.8	55.3	56.4	55.9	51.5	53.4	7656	410	8545	73.5	68.0	68.1	62.2	
09/16	50.9	50.0	57.6	51.8	52.4	52.9	54.2	55.1	55.6	56.7	55.7	51.3	53.3	8058	273	8544	76.0	70.1	74.3	63.8	
09/17	50.4	49.7	57.7	51.9	52.4	53.0	54.1	55.0	55.5	56.8	55.8	51.4	53.5	8369	14	8545	77.5	71.5	73.5	66.8	
09/18	50.5	49.7	57.6	50.9	51.6	52.2	54.0	55.0	55.6	57.0	56.7	51.6	54.2	7809	525	8543	79.5	74.3	75.8	69.3	
09/19	50.6	49.8	57.7	51.3	52.0	52.5	53.9	54.9	55.5	56.9	57.0	51.8	54.5	8087	495	8550	80.5	75.4	76.5	68.8	
09/20	50.4	49.7	57.7	51.4	52.0	52.6	54.2	55.2	55.7	57.0	56.3	52.0	54.0	7185	348	8003	77.5	71.7	71.8	64.2	
09/21	50.6	49.8	58.0	51.5	51.9	52.4	53.7	54.6	55.2	56.5	55.7	51.9	53.5	7565	185	7994	71.5	67.0	67.2	59.3	
09/22	50.6	49.7	58.0	51.0	51.4	52.0	53.2	54.0	54.5	55.6	55.4	51.8	52.6	7110	362	7512	68.0	62.9	63.4	54.3	
09/23	50.6	49.7	58.1	51.1	51.3	51.7	52.7	53.5	54.0	55.2	55.3	51.7	52.5	7251	21	7489	66.0	63.0	67.7	54.9	
09/24	50.6	49.8	57.9	50.9	51.5	52.2	53.5	54.2	54.7	55.7	56.5	51.6	53.8	7074	320	7491	79.0	71.2	75.9	62.1	
09/25	50.6	49.9	58.0	51.5	52.0	52.6	53.8	54.6	55.1	56.4	56.3	51.6	53.5	7359	214	7494	↑	87.0	76.0	80.5	65.1
09/26	50.5	49.8	58.1	51.3	51.8	52.4	53.9	54.9	55.5	56.7	56.5	51.9	54.1	6559	587	7499	78.5	71.8	74.6	67.7	
09/27	50.7	49.9	58.0	51.8	52.3	52.8	54.1	54.9	55.3	56.5	56.6	52.1	54.5	6681	793	7492	79.0	70.4	73.3	67.0	
09/28	50.8	49.9	58.0	51.9	52.4	52.9	54.3	55.3	55.8	57.0	56.8	52.1	55.2	6344	742	7329	77.5	70.4	74.0	66.4	
09/29	50.8	50.0	57.9	51.9	52.4	53.0	54.4	55.3	55.8	57.0	56.8	52.0	55.2	6701	584	7366	73.0	67.0	68.8	63.1	
09/30	50.6	50.0	57.9	51.8	51.9	52.4	53.8	54.7	55.3	56.4	56.4	51.7	53.7	6666	596	7365	67.5	62.0	64.3	55.3	
-																					
Sep	50.8	50.0	57.7	51.5	52.0	52.6	53.9	54.9	55.4	56.7	56.6	51.6	53.8	7826	375	8378	75.9	70.1	71.7	63.9	

Total CFS	234791	11263	251338
Total AF	465698	22340	498519

Legend

- ? = 1-9 hours of data missing (Average includes estimations)
- ! = 10 or more hours of data missing (Average not calculated)
- # = Station out of service
- ↑ = Record high air temperature
- ↓ = Record low air temperature
- = Monthly Averages

Notes

- ¹ Temperatures are weighted averages based on individual penstock flow and temperature
- Highlighted cells in the TCD column indicate a TCD change was made on that day
- ² Current control point (see page 3 for more details)
- ³ DGC is only reported in September

D A T E	Redding (RDD) Daily Air Temperatures (°F)																																				
	Actual			Forecasted																																	
	Previous Day			Current Day			1 Day			2 Days			3 Days			4 Days			5 Days			6 Days			7 Days			8 Days			9 Days			10 Days			
	↓	↑	Avg	↓	↑	Avg	↓	↑	Avg	↓	↑	Avg	↓	↑	Avg	↓	↑	Avg	↓	↑	Avg	↓	↑	Avg	↓	↑	Avg	↓	↑	Avg	↓	↑	Avg	↓	↑	Avg	
09/01	60	93	76.5	62	93	77.5	58	90	74.0	57	91	74.0	53	90	71.5	54	90	72.0	54	94	74.0	59	96	77.5	61	89	75.0	62	94	78.0	57	90	73.5	59	93	76.0	
09/02	61	92	76.5	62	91	76.5	57	89	73.0	53	87	70.0	53	90	71.5	57	92	74.5	58	97	77.5	61	98	79.5	64	92	78.0	60	95	77.5	59	94	76.5	58	96	77.0	
09/03	62	92	77.0	NR	88	-	58	85	71.5	57	89	73.0	59	91	75.0	60	97	78.5	60	98	79.0	60	99	79.5	60	97	78.5	60	97	78.5	60	95	77.5	60	96	78.0	
09/04	69	90	79.5	NR	86	-	54	92	73.0	58	94	76.0	60	98	79.0	60	99	79.5	63	100	81.5	64	100	82.0	61	99	80.0	61	97	79.0	61	95	78.0	60	95	77.5	
09/05	57	88	72.5	64	93	78.5	59	94	76.5	59	98	78.5	59	100	79.5	61	101	81.0	60	100	80.0	60	97	78.5	61	93	77.0	59	91	75.0	55	92	73.5	55	94	74.5	
09/06	63	92	77.5	65	96	80.5	61	99	80.0	61	101	81.0	61	103	82.0	61	101	81.0	61	97	79.0	60	95	77.5	59	95	77.0	57	94	75.5	58	93	75.5	57	94	75.5	
09/07	57	95	76.0	73	98	85.5	61	98	79.5	60	101	80.5	61	101	81.0	61	95	78.0	59	92	75.5	58	92	75.0	53	89	71.0	57	94	75.5	58	93	75.5	58	91	74.5	
09/08	69	99	84.0	63	99	81.0	62	101	81.5	62	101	81.5	61	95	78.0	60	92	76.0	59	92	75.5	55	93	74.0	56	95	75.5	59	95	77.0	58	93	75.5	59	94	76.5	
09/09	60	98	79.0	63	101	82.0	61	100	80.5	60	95	77.5	60	88	74.0	55	80	67.5	53	84	68.5	59	95	77.0	60	95	77.5	64	94	79.0	62	92	77.0	60	93	76.5	
09/10	61	104	82.5	61	103	82.0	60	94	77.0	59	89	74.0	56	82	69.0	55	86	70.5	57	95	76.0	60	98	79.0	61	98	79.5	60	96	78.0	62	94	78.0	59	93	76.0	
09/11	60	101	80.5	63	93	78.0	59	88	73.5	56	83	69.5	54	87	70.5	57	94	75.5	59	98	78.5	59	98	78.5	57	90	73.5	59	91	75.0	58	88	73.0	54	95	74.5	
09/12	62	92	77.0	57	87	72.0	57	83	70.0	54	86	70.0	57	94	75.5	59	97	78.0	58	97	77.5	60	95	77.5	57	91	74.0	54	88	71.0	58	90	74.0	59	92	75.5	
09/13	57	89	73.0	52	82	67.0	51	86	68.5	57	94	75.5	59	97	78.0	59	97	78.0	60	94	77.0	59	96	77.5	61	96	78.5	60	95	77.5	57	91	74.0	56	93	74.5	
09/14	52	76	64.0	53	84	68.5	54	92	73.0	55	97	76.0	57	97	77.0	60	97	78.5	59	97	78.0	60	94	77.0	60	93	76.5	56	93	74.5	56	89	72.5	55	92	73.5	
09/15	52	83	67.5	54	92	73.0	57	97	77.0	59	98	78.5	60	97	78.5	60	96	78.0	59	91	75.0	57	89	73.0	57	86	71.5	52	87	69.5	56	92	74.0	59	90	74.5	
09/16	52	95	73.5	53	99	76.0	59	98	78.5	59	97	78.0	59	92	75.5	57	87	72.0	54	87	70.5	53	89	71.0	51	86	68.5	53	84	68.5	57	88	72.5	57	90	73.5	
09/17	52	100	76.0	57	100	78.5	58	99	78.5	63	97	80.0	58	91	74.5	56	83	69.5	51	83	67.0	51	88	69.5	54	89	71.5	60	92	76.0	60	90	75.0	57	91	74.0	
09/18	57	98	77.5	60	100	80.0	61	97	79.0	58	89	73.5	55	83	69.0	51	81	66.0	53	88	70.5	55	93	74.0	60	97	78.5	65	96	80.5	58	90	74.0	59	89	74.0	
09/19	60	99	79.5	65	97	81.0	58	91	74.5	55	81	68.0	49	75	62.0	50	84	67.0	56	93	74.5	58	96	77.0	66	97	81.5	61	94	77.5	59	88	73.5	54	88	71.0	
09/20	65	96	80.5	66	90	78.0	53	81	67.0	49	77	63.0	48	84	66.0	59	93	76.0	64	97	80.5	62	95	78.5	57	91	74.0	57	90	73.5	57	87	72.0	55	90	72.5	
09/21	64	91	77.5	61	81	71.0	48	78	63.0	45	85	65.0	57	94	75.5	59	99	79.0	59	97	78.0	57	95	76.0	59	95	77.0	57	91	74.0	58	87	72.5	53	84	68.5	
09/22	60	83	71.5	60	78	69.0	49	84	66.5	55	94	74.5	59	99	79.0	60	99	79.5	58	96	77.0	57	94	75.5	58	91	74.5	56	89	72.5	53	83	68.0	54	87	70.5	
09/23	58	78	68.0	51	83	67.0	56	93	74.5	59	99	79.0	59	98	78.5	59	97	78.0	58	92	75.0	56	89	72.5	54	82	68.0	50	77	63.5	51	78	64.5	49	82	65.5	
09/24	50	82	66.0	66	93	79.5	60	100	80.0	59	99	79.0	58	98	78.0	58	92	75.0	56	88	72.0	54	86	70.0	51	81	66.0	53	84	68.5	54	84	69.0	53	88	70.5	
09/25	62	96	79.0	76	101	88.5	60	99	79.5	58	99	78.5	58	94	76.0	55	86	70.5	52	80	66.0	47	77	62.0	48	73	60.5	50	66	58.0	52	71	61.5	53	85	69.0	
09/26	70	104	87.0	60	102	81.0	60	101	80.5	59	95	77.0	57	87	72.0	55	80	67.5	47	77	62.0	46	75	60.5	50	85	67.5	57	82	69.5	56	81	68.5	56	85	70.5	
09/27	58	99	78.5	59	99	79.0	59	96	77.5	57	87	72.0	55	81	68.0	44	77	60.5	43	73	58.0	49	74	61.5	49	78	63.5	53	81	67.0	57	84	70.5	53	79	66.0	
09/28	58	100	79.0	60	95	77.5	56	87	71.5	55	80	67.5	48	74	61.0	47	68	57.5	46	71	58.5	49	74	61.5	51	80	65.5	56	82	69.0	58	87	72.5	53	84	68.5	
09/29	59	96	77.5	59	87	73.0	54	79	66.5	45	75	60.0	43	66	54.5	44	71	57.5	46	75	60.5	48	83	65.5	56	86	71.0	56	88	72.0	54	83	68.5	52	82	67.0	
09/30	59	87	73.0	59	78	68.5	44	74	59.0	43	66	54.5	42	70	56.0	46	75	60.5	49	80	64.5	51	82	66.5	52	81	66.5	50	79	64.5	50	79	64.5	54	72	63.0	
-	57	78	67.5																																		

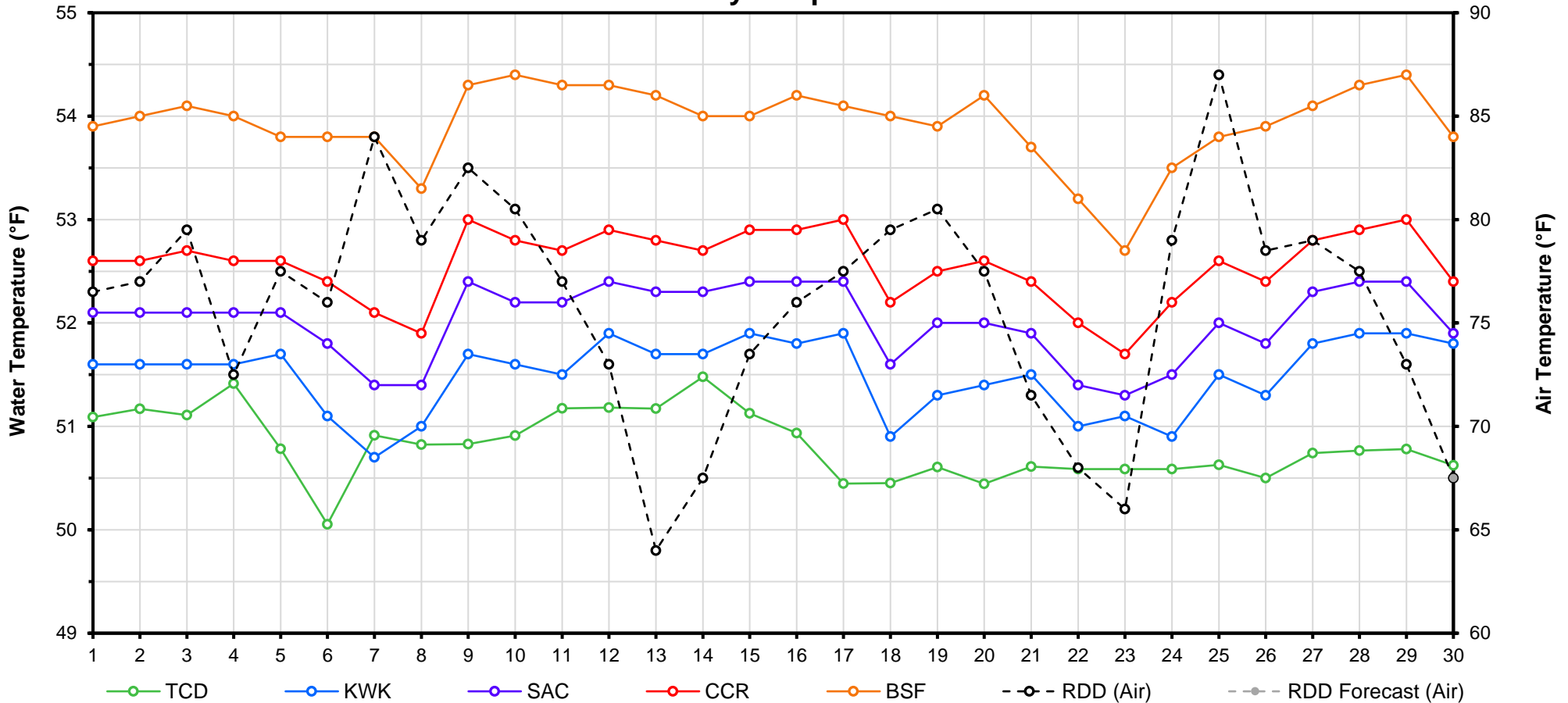
[Web Links](#)

[Legend](#)

[10-Day Min/Max Forecast](#)
[Previous Days Min/Max Actuals](#)

NR = Forecasted temperatures not recorded
100 = Previous day actual temperatures in red and bolded indicate a record temperature for that date

Mean Daily Temperatures



Station Details			
Code	Body of Water	Location ¹	CDEC Link
TCD	N/A	Shasta Power Plant	N/A
SHD	Sacramento River	0.3 miles downstream of Shasta Power Plant	Click Here
SPP	N/A	Spring Creek Power Plant	N/A
KWK	Sacramento River	0.8 miles downstream of Keswick Dam	Click Here
SAC	Sacramento River	4.8 miles downstream of Keswick Dam	Click Here
CCR	Sacramento River	9.7 miles downstream of Keswick Dam	Click Here
BSF	Sacramento River	25 miles downstream of Keswick Dam	Click Here
JLF	Sacramento River	34 miles downstream of Keswick Dam	Click Here
BND	Sacramento River	41 miles downstream of Keswick Dam	Click Here
RDB	Sacramento River	58 miles downstream of Keswick Dam	Click Here
IGO	Clear Creek	7.3 miles downstream of Whiskeytown Dam	Click Here
LWS	Trinity River	1.1 miles downstream of Lewiston Dam	Click Here
DGC ²	Trinity River	19 miles downstream of Lewiston Dam	Click Here
NFH ³	Trinity River	38 miles downstream of Lewiston Dam	Click Here

Temperature Control Point		
Point	Temp. (°F)	Date Range
BSF	56.0	6/17 - Current

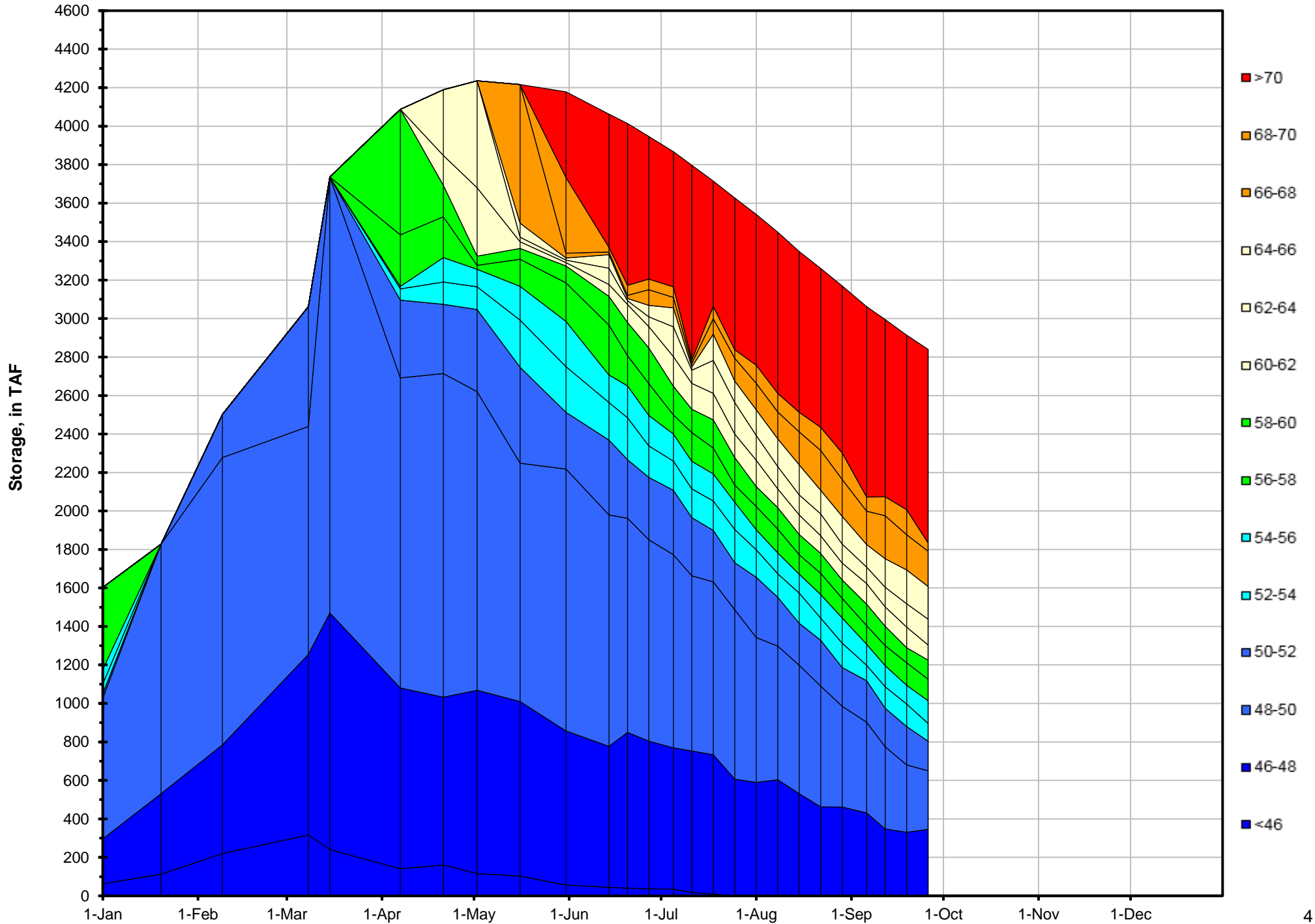
Notes

¹ Distances are approximate

² DGC is only reported in September

³ NFH is only reported in October, November and December

Lake Shasta Isothermalbaths - 2016 (Water Temperature, in °F)



DATE	Daily Max		7DADM ¹		DAT ²
	SAC	CCR	SAC	CCR	BSF
09/01	53.5	54.3	53.5	54.3	53.9
09/02	53.5	54.3	53.5	54.3	54.0
09/03	53.6	54.4	53.5	54.3	54.1
09/04	53.4	54.3	53.5	54.3	54.0
09/05	53.6	54.4	53.5	54.4	53.8
09/06	53.5	54.2	53.5	54.4	53.8
09/07	53.1	53.9	53.5	54.3	53.8
09/08	53.1	53.8	53.4	54.2	53.3
09/09	54.1	54.9	53.5	54.3	54.3
09/10	53.9	54.8	53.5	54.3	54.4
09/11	53.9	54.7	53.6	54.4	54.3
09/12	53.9	54.8	53.6	54.4	54.3
09/13	53.8	54.7	53.7	54.5	54.2
09/14	53.8	54.7	53.8	54.6	54.0
09/15	53.9	54.9	53.9	54.8	54.0
09/16	53.9	54.9	53.9	54.8	54.2
09/17	54.2	55.0	53.9	54.8	54.1
09/18	53.1	54.2	53.8	54.7	54.0
09/19	53.5	54.4	53.7	54.7	53.9
09/20	53.6	54.6	53.7	54.7	54.2
09/21	53.4	54.5	53.7	54.6	53.7
09/22	53.1	54.1	53.5	54.5	53.2
09/23	53.0	53.6	53.4	54.3	52.7
09/24	53.2	54.4	53.3	54.3	53.5
09/25	54.0	55.1	53.4	54.4	53.8
09/26	53.6	54.5	53.4	54.4	53.9
09/27	54.1	55.1	53.5	54.5	54.1
09/28	54.2	55.2	53.6	54.6	54.3
09/29	54.0	55.1	53.7	54.7	54.4
09/30	53.0	53.6	53.7	54.7	53.8
-					

Notes

¹ 7DADM = 7-Day Average Daily Maximum

² DAT = Daily Average Temperature

