

Northern CVP Water Temperature Report

August - 2021

Page	Description
2	- Mean Daily Water Temperature, Release Flow Rates and Air Temperatures with Monthly Averages
3	- Redding 10-Day Forecasted Air Temperatures
4	- Sacramento River Mean Daily Water Temperature, Air Temperature and 10-Day Forecasted Air Temperature Plot - Water Temperature Measuring Station Details - Temperature Control Point Details
5	- Shasta Lake Isothermobaths & Cold Water Pool Statistics
14	- Trinity Lake Isothermobaths & Cold Water Pool Statistics
23	- Whiskeytown Lake Isothermobaths & Cold Water Pool Statistics
x	- TCD Configuration (External Link)



— BUREAU OF —
RECLAMATION

All Data in this Report is Preliminary and Subject to Change

DATE	Mean Daily Water Temperatures (°F)														Mean Daily Release (CFS)			Mean Daily Air Temperatures (°F)			
	TCD ¹	SHD	SPP ¹	KWK	SAC ²	CCR	BSF	JLF	BND	RDB	IGO	LWS	DGC ³	NFH	Shasta Generation	Spring Creek P.P.	Keswick Total	RDD	BSF	RDB	
Jul	52.3	50.9	55.9	53.8	54.7	55.3	57.1	58.4	59.6	61.1	57.6	51.4	62.6	67.3	6923	1910	9166	86.4	81.6	81.5	
08/01	53.1	52.1	# -	54.9	55.7	56.5	! -	59.5	60.6	62.2	58.6	51.1	# -	64.7	6400	1966	9052	88.0	-	83.0	
08/02	53.5	52.2	# -	54.8	55.4	56.1	! -	59.2	60.2	61.8	58.1	51.1	# -	61.6	6832	1960	9054	84.0	-	77.2	
08/03	54.1	? 52.8	# -	54.9	55.5	56.1	? 57.5	58.7	59.7	61.0	57.7	50.8	# -	60.5	6848	1950	9043	82.0	78.3	78.4	
08/04	54.1	52.7	# -	55.2	55.7	56.4	57.8	59.0	59.8	61.2	57.9	50.6	# -	59.7	5921	2070	9040	83.0	77.4	79.0	
08/05	54.0	52.8	# -	55.4	55.7	56.3	57.7	58.9	59.8	61.1	56.8	50.0	# -	59.7	5819	1940	8793	75.5	72.3	72.3	
08/06	53.0	52.4	# -	55.1	55.7	56.4	57.5	58.5	59.3	60.3	57.4	50.6	# -	58.8	6625	1959	8785	84.5	76.4	79.2	
08/07	53.3	? 52.3	# -	54.7	55.2	55.9	57.2	58.5	59.4	60.6	56.8	50.0	# -	58.2	6572	1807	8747	81.0	75.4	75.3	
08/08	54.0	53.3	# -	54.2	54.7	55.3	56.5	57.8	58.8	60.2	57.0	49.9	# -	58.3	6666	1954	8744	82.0	76.3	77.0	
08/09	53.9	53.3	# -	54.9	55.4	56.1	57.3	58.3	59.0	60.2	57.8	50.2	# -	61.1	6584	1879	8752	84.5	78.8	79.2	
08/10	53.6	53.0	# -	55.2	55.6	56.3	57.6	58.9	59.8	61.1	57.4	50.2	# -	62.9	5970	1956	8542	86.0	80.7	81.5	
08/11	54.2	53.4	# -	55.1	55.6	56.3	57.5	58.6	59.5	60.7	57.5	50.4	# -	62.6	6103	1878	8555	87.0	79.8	83.3	
08/12	54.5	53.6	# -	55.0	55.5	56.1	57.3	58.5	59.4	60.5	57.1	50.3	# -	60.7	5693	1959	8546	88.5	81.1	80.6	
08/13	53.2	? 52.6	# -	55.2	55.5	56.1	57.2	58.4	59.4	60.7	56.5	50.0	# -	58.2	6127	2055	8553	83.5	78.3	80.2	
08/14	52.7	51.8	# -	54.7	55.4	56.2	57.6	58.7	59.5	60.6	57.2	49.9	# -	57.9	6068	2020	8550	89.0	83.8	85.0	
08/15	52.9	? 52.1	# -	54.1	54.7	55.4	56.7	58.2	59.3	61.0	57.1	49.7	# -	58.6	6160	1943	8550	↑ 94.5	85.9	85.8	
08/16	53.3	52.5	# -	53.9	54.4	54.9	56.2	57.6	58.7	60.1	56.5	49.8	# -	59.1	6696	2058	8550	88.0	82.3	81.7	
08/17	53.5	? 52.7	# -	54.0	54.4	55.0	55.9	57.0	57.8	58.9	56.7	49.7	# -	59.0	6126	1936	8523	84.0	79.5	76.4	
08/18	53.8	? 53.1	# -	54.4	54.9	55.5	56.5	57.4	58.1	58.6	56.7	50.0	# -	58.5	5755	1913	8270	81.5	79.0	80.1	
08/19	53.7	53.0	# -	54.6	55.2	55.9	57.0	58.1	59.0	60.0	57.0	50.4	# -	58.3	5782	1874	8002	84.5	79.5	83.2	
08/20	53.9	53.3	# -	54.5	55.1	55.9	57.1	58.1	59.0	60.0	57.0	50.5	# -	58.0	5690	1934	7962	79.5	72.8	72.3	
08/21	54.2	53.5	# -	54.8	55.2	55.9	57.1	58.1	59.0	60.0	56.8	50.3	# -	58.1	5377	1913	7767	74.5	69.3	69.1	
08/22	54.3	53.7	# -	54.8	55.4	56.1	57.2	58.2	59.1	60.1	56.7	50.1	# -	56.9	5474	1963	7530	74.5	70.1	70.2	
08/23	54.5	54.0	# -	55.0	55.6	56.3	57.5	58.5	59.3	60.3	56.9	50.4	# -	58.0	5164	1912	7524	75.5	70.3	71.2	
08/24	54.6	54.3	# -	55.2	55.8	56.5	57.7	58.8	59.7	60.7	56.7	50.6	# -	60.3	5037	1784	7281	74.5	69.8	71.3	
08/25	54.8	54.3	# -	55.4	56.1	56.8	58.0	59.0	59.9	60.9	56.6	50.9	# -	60.6	5002	1534	7032	74.0	70.4	72.1	
08/26	55.0	54.5	# -	55.5	56.1	56.9	58.3	59.4	60.4	61.4	56.5	50.7	# -	? 59.3	5398	1117	6835	79.0	73.7	76.1	
08/27	55.3	? 55.1	# -	55.7	56.5	57.3	58.6	59.6	60.5	61.5	57.4	51.0	# -	58.7	5503	1040	6826	87.0	79.1	81.8	
08/28	55.5	55.1	# -	55.8	56.4	57.1	58.5	59.6	60.5	61.6	56.9	50.8	# -	59.5	5208	1119	6834	88.5	76.3	79.1	
08/29	55.5	54.1	# -	55.7	56.4	57.1	58.3	59.3	60.2	61.2	56.6	50.9	# -	60.0	5120	1050	6832	82.0	75.7	78.0	
08/30	55.5	55.1	# -	55.7	56.4	57.2	58.5	59.6	60.5	61.5	56.6	51.0	# -	59.3	5207	1052	6829	82.0	76.2	78.4	
08/31	55.7	55.5	# -	55.8	56.3	57.0	58.3	59.5	60.5	61.7	56.7	50.8	# -	58.1	5617	1074	6827	80.0	75.0	76.3	
Aug	54.1	53.4	-	55.0	55.5	56.2	57.4	58.6	59.5	60.7	57.1	50.4	-	59.5	5889	1760	8088	82.6	76.7	77.9	
															Total CFS	182544	54569	250730			
															Total AF	362069	108235	497313			

Legend

- ? = 1-9 hours of data missing (Average includes estimations)
- ! = 10 or more hours of data missing (Average not calculated)
- # = Station out of service
- ↑ = Record high air temperature
- ↓ = Record low air temperature
- = Monthly Averages

Notes

- ¹ Temperatures are weighted averages based on individual penstock flow and temperature
Highlighted cells in the TCD column indicate a TCD change was made on that day
- ² Current Sacramento River control point (see page 4 for more details)
- ³ Data is currently being collected locally and periodically downloaded.
Once downloaded and certified by USGS, missing data will be added.

D A T E	Redding (RDD) Daily Air Temperatures (°F)																																			
	Actual			Forecasted																																
	Previous Day			Current Day			1 Day			2 Days			3 Days			4 Days			5 Days			6 Days			7 Days			8 Days			9 Days			10 Days		
	↓	↑	Avg	↓	↑	Avg	↓	↑	Avg	↓	↑	Avg	↓	↑	Avg	↓	↑	Avg	↓	↑	Avg	↓	↑	Avg	↓	↑	Avg	↓	↑	Avg	↓	↑	Avg	↓	↑	Avg
08/01	80	104	92.0	71	102	86.5	64	100	82.0	63	102	82.5	62	99	80.5	59	97	78.0	62	98	80.0	64	96	80.0	68	99	83.5	67	99	83.0	69	99	84.0	67	100	83.5
08/02	70	106	88.0	70	101	85.5	63	103	83.0	64	99	81.5	60	97	78.5	64	100	82.0	64	99	81.5	65	98	81.5	67	101	84.0	67	101	84.0	69	99	84.0	68	101	84.5
08/03	68	100	84.0	62	103	82.5	63	103	83.0	61	94	77.5	62	100	81.0	65	101	83.0	67	98	82.5	64	94	79.0	66	101	83.5	66	102	84.0	67	100	83.5	67	102	84.5
08/04	60	104	82.0	62	103	82.5	59	92	75.5	62	101	81.5	64	103	83.5	67	97	82.0	65	95	80.0	65	96	80.5	65	98	81.5	67	102	84.5	69	98	83.5	64	93	78.5
08/05	61	105	83.0	64	92	78.0	62	100	81.0	64	103	83.5	65	98	81.5	64	97	80.5	63	101	82.0	65	103	84.0	68	102	85.0	66	100	83.0	67	96	81.5	66	97	81.5
08/06	62	89	75.5	66	100	83.0	63	103	83.0	64	99	81.5	64	99	81.5	65	103	84.0	67	105	86.0	68	105	86.5	69	105	87.0	68	102	85.0	67	99	83.0	66	97	81.5
08/07	65	104	84.5	66	105	85.5	67	102	84.5	64	106	85.0	65	107	86.0	72	109	90.5	78	111	94.5	77	106	91.5	72	107	89.5	70	107	88.5	69	100	84.5	65	98	81.5
08/08	65	97	81.0	66	98	82.0	64	102	83.0	65	106	85.5	68	107	87.5	69	105	87.0	70	105	87.5	70	106	88.0	68	102	85.0	65	98	81.5	65	92	78.5	63	96	79.5
08/09	66	98	82.0	67	103	85.0	65	104	84.5	68	106	87.0	69	105	87.0	70	104	87.0	69	105	87.0	67	101	84.0	66	99	82.5	65	95	80.0	65	91	78.0	64	95	79.5
08/10	66	103	84.5	69	106	87.5	68	107	87.5	69	105	87.0	70	104	87.0	70	106	88.0	70	105	87.5	65	102	83.5	68	96	82.0	63	96	79.5	63	95	79.0	65	99	82.0
08/11	68	104	86.0	70	108	89.0	71	107	89.0	71	107	89.0	70	104	87.0	69	104	86.5	65	101	83.0	64	101	82.5	64	96	80.0	62	96	79.0	63	93	78.0	63	93	78.0
08/12	70	104	87.0	71	107	89.0	71	106	88.5	72	106	89.0	72	105	88.5	70	102	86.0	64	100	82.0	63	99	81.0	66	103	84.5	67	103	85.0	67	97	82.0	64	97	80.5
08/13	71	106	88.5	72	106	89.0	72	108	90.0	73	110	91.5	72	105	88.5	68	101	84.5	64	101	82.5	64	102	83.0	66	103	84.5	67	104	85.5	69	100	84.5	65	98	81.5
08/14	71	96	83.5	72	108	90.0	72	112	92.0	71	106	88.5	66	98	82.0	63	98	80.5	64	100	82.0	63	101	82.0	67	101	84.0	68	99	83.5	67	98	82.5	65	98	81.5
08/15	72	106	89.0	74	110	92.0	71	104	87.5	66	99	82.5	63	98	80.5	65	99	82.0	62	98	80.0	63	100	81.5	67	101	84.0	66	99	82.5	66	96	81.0	63	95	79.0
08/16	73	116	94.5	76	106	91.0	66	96	81.0	60	94	77.0	64	99	81.5	61	96	78.5	60	94	77.0	60	95	77.5	63	95	79.0	62	100	81.0	64	98	81.0	63	98	80.5
08/17	75	101	88.0	72	94	83.0	61	95	78.0	62	96	79.0	60	97	78.5	60	90	75.0	58	93	75.5	58	96	77.0	64	100	82.0	65	102	83.5	64	97	80.5	62	96	79.0
08/18	72	96	84.0	70	91	80.5	63	93	78.0	61	95	78.0	60	89	74.5	57	91	74.0	58	95	76.5	59	97	78.0	64	102	83.0	63	105	84.0	64	99	81.5	64	100	82.0
08/19	70	93	81.5	76	95	85.5	64	96	80.0	59	89	74.0	57	91	74.0	58	93	75.5	59	96	77.5	60	98	79.0	62	98	80.0	65	101	83.0	64	97	80.5	62	96	79.0
08/20	72	97	84.5	67	96	81.5	60	88	74.0	56	90	73.0	56	93	74.5	57	93	75.0	58	95	76.5	60	98	79.0	66	101	83.5	66	105	85.5	66	99	82.5	64	98	81.0
08/21	65	94	79.5	63	88	75.5	59	90	74.5	58	92	75.0	59	93	76.0	60	95	77.5	59	101	80.0	64	103	83.5	66	105	85.5	65	105	85.0	66	99	82.5	62	97	79.5
08/22	63	86	74.5	58	89	73.5	57	90	73.5	56	90	73.0	57	92	74.5	58	99	78.5	64	102	83.0	66	104	85.0	63	99	81.0	63	101	82.0	63	96	79.5	61	95	78.0
08/23	58	91	74.5	60	94	77.0	57	94	75.5	57	94	75.5	58	97	77.5	61	100	80.5	65	101	83.0	64	102	83.0	65	101	83.0	64	102	83.0	62	95	78.5	61	96	78.5
08/24	59	92	75.5	59	90	74.5	56	91	73.5	56	96	76.0	63	100	81.5	65	102	83.5	63	101	82.0	65	100	82.5	64	101	82.5	62	101	81.5	62	96	79.0	61	97	79.0
08/25	58	91	74.5	57	91	74.0	57	96	76.5	63	100	81.5	65	104	84.5	63	105	84.0	64	101	82.5	62	97	79.5	62	96	79.0	60	99	79.5	61	95	78.0	59	91	75.0
08/26	55	93	74.0	61	95	78.0	63	100	81.5	65	103	84.0	63	102	82.5	63	97	80.0	61	94	77.5	58	91	74.5	60	93	76.5	59	95	77.0	61	94	77.5	60	95	77.5
08/27	60	98	79.0	77	101	89.0	66	104	85.0	64	102	83.0	63	98	80.5	59	94	76.5	58	92	75.0	58	91	74.5	58	92	75.0	58	92	75.0	58	91	74.5	59	93	76.0
08/28	70	104	87.0	80	104	92.0	64	102	83.0	64	98	81.0	59	94	76.5	57	91	74.0	55	88	71.5	54	88	71.0	58	93	75.5	58	98	78.0	61	95	78.0	63	95	79.0
08/29	73	104	88.5	63	102	82.5	63	99	81.0	59	94	76.5	58	92	75.0	56	91	73.5	56	92	74.0	57	94	75.5	60	98	79.0	62	102	82.0	65	96	80.5	62	95	78.5
08/30	62	102	82.0	63	101	82.0	62	96	79.0	58	90	74.0	54	90	72.0	55	91	73.0	55	91	73.0	56	95	75.5	67	102	84.5	64	102	83.0	64	96	80.0	61	95	78.0
08/31	63	101	82.0	63	96	79.5	59	91	75.0	55	90	72.5	56	94	75.0	58	96	77.0	58	97	77.5	62	100	81.0	65	102	83.5	66	100	83.0	65	95	80.0	61	93	77.0

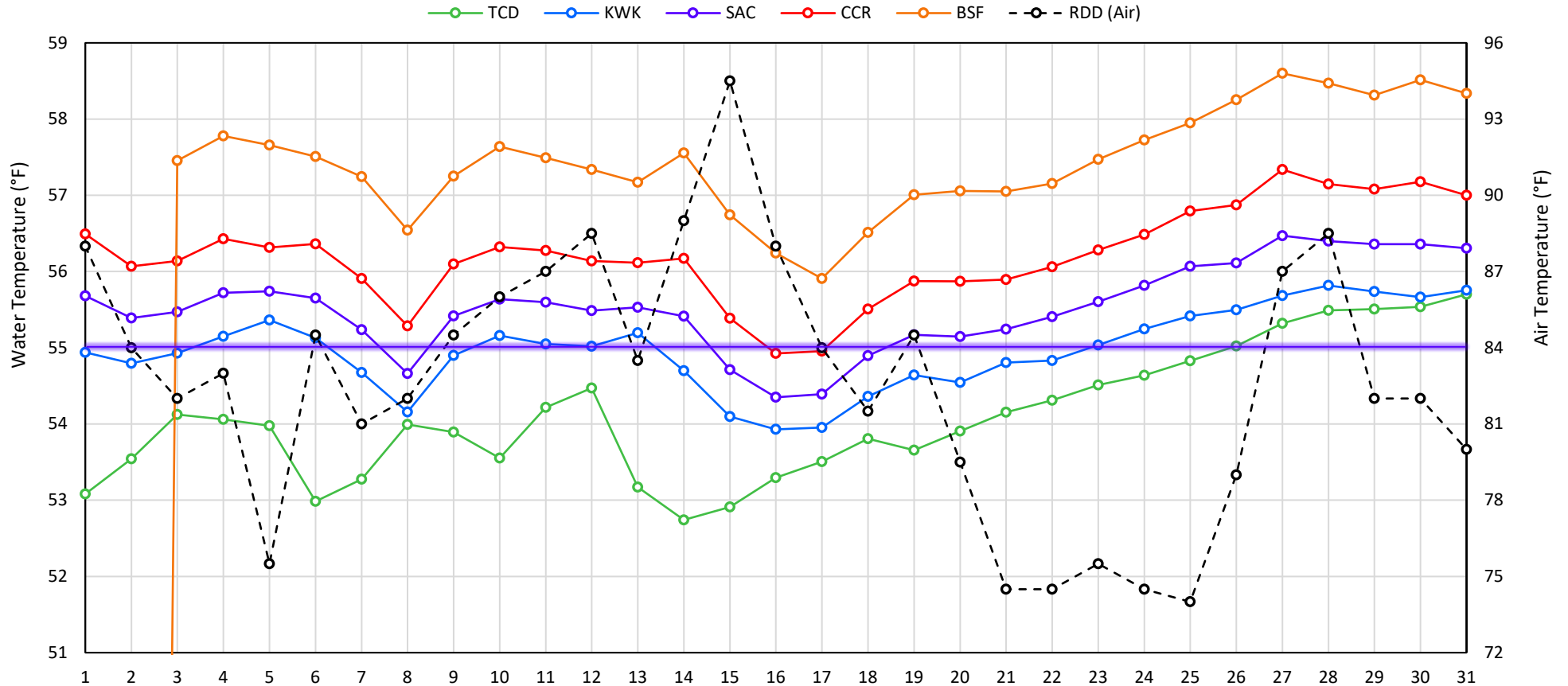
Web Links

- [10-Day Min/Max Forecast](#)
- [Previous Days Min/Max Actuals](#)

Legend

- NR = Forecasted temperatures not recorded
- 100** = Previous day actual temperatures in red and bolded indicate a record temperature for that date

Mean Daily Temperatures



Station Details

Code	Body of Water	Location ¹	CDEC Link
TCD	N/A	Shasta Power Plant	N/A
SHD	Sacramento River	0.3 miles downstream of Shasta Power Plant	Click Here
SPP	N/A	Spring Creek Power Plant	N/A
KWK	Sacramento River	0.8 miles downstream of Keswick Dam	Click Here
SAC	Sacramento River	4.8 miles downstream of Keswick Dam	Click Here
CCR	Sacramento River	9.7 miles downstream of Keswick Dam	Click Here
BSF	Sacramento River	25 miles downstream of Keswick Dam	Click Here
JLF	Sacramento River	34 miles downstream of Keswick Dam	Click Here
BND	Sacramento River	41 miles downstream of Keswick Dam	Click Here
RDB	Sacramento River	58 miles downstream of Keswick Dam	Click Here
IGO	Clear Creek	7.3 miles downstream of Whiskeytown Dam	Click Here
LWS	Trinity River	1.1 miles downstream of Lewiston Dam	Click Here
DGC	Trinity River	19 miles downstream of Lewiston Dam	Click Here
NFH	Trinity River	38 miles downstream of Lewiston Dam	Click Here

Water Right Temperature Control Points

River	Point	Temp. (°F)	Begin Date	End Date
Sacramento	CCR	56	09/21/2020	04/18/2021
Sacramento	CCR	60	04/18/2021	05/17/2021
Sacramento	SAC	57	05/17/2021	06/15/2021
Sacramento	SAC	55	06/15/2021	TBD
Trinity	DGC	56	09/15/2021	10/01/2021
Trinity	NFH	56	10/01/2021	12/31/2021

Notes

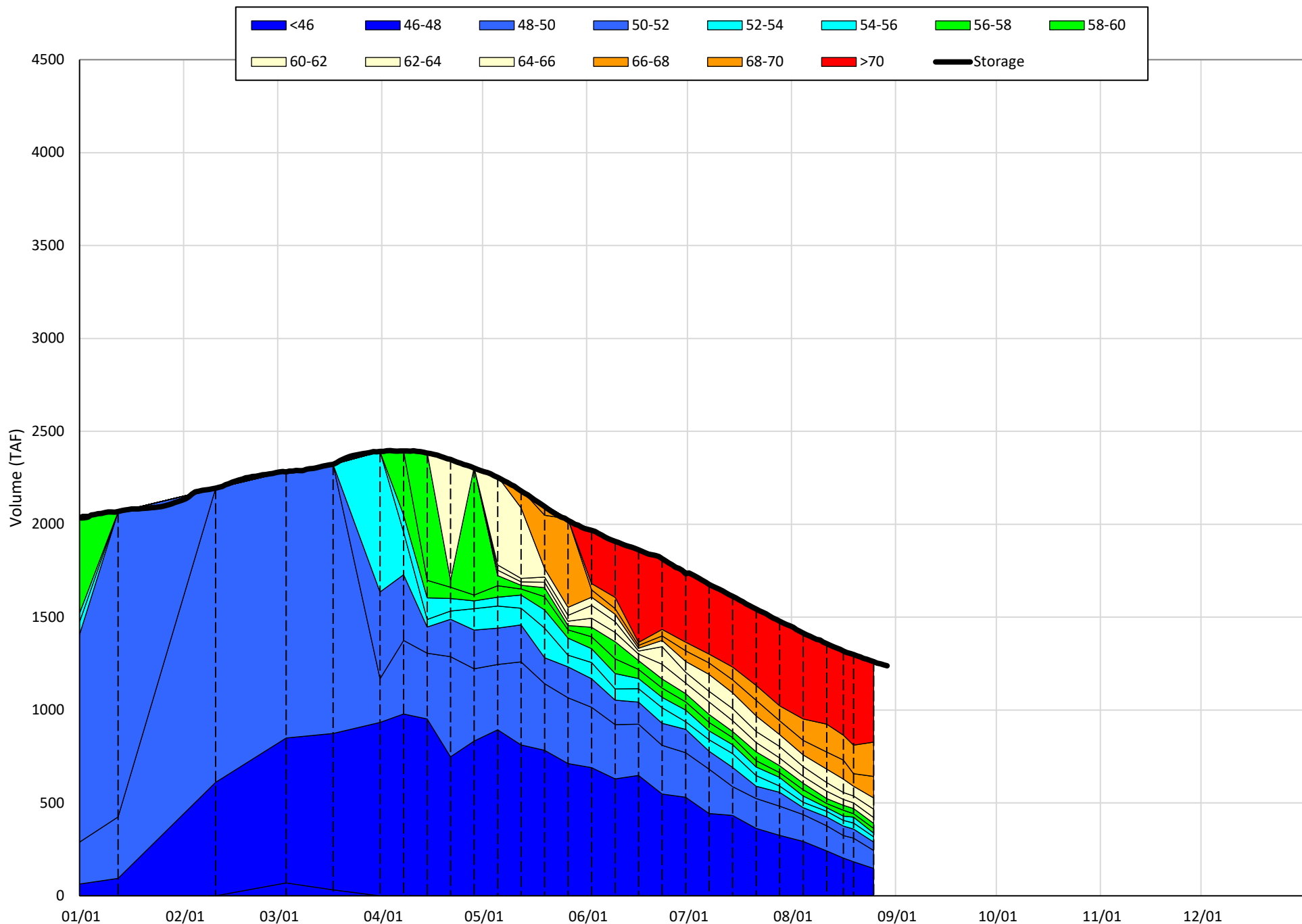
¹ Distances are approximate

Shasta Lake Isothermobaths & Cold Water Pool Statistics

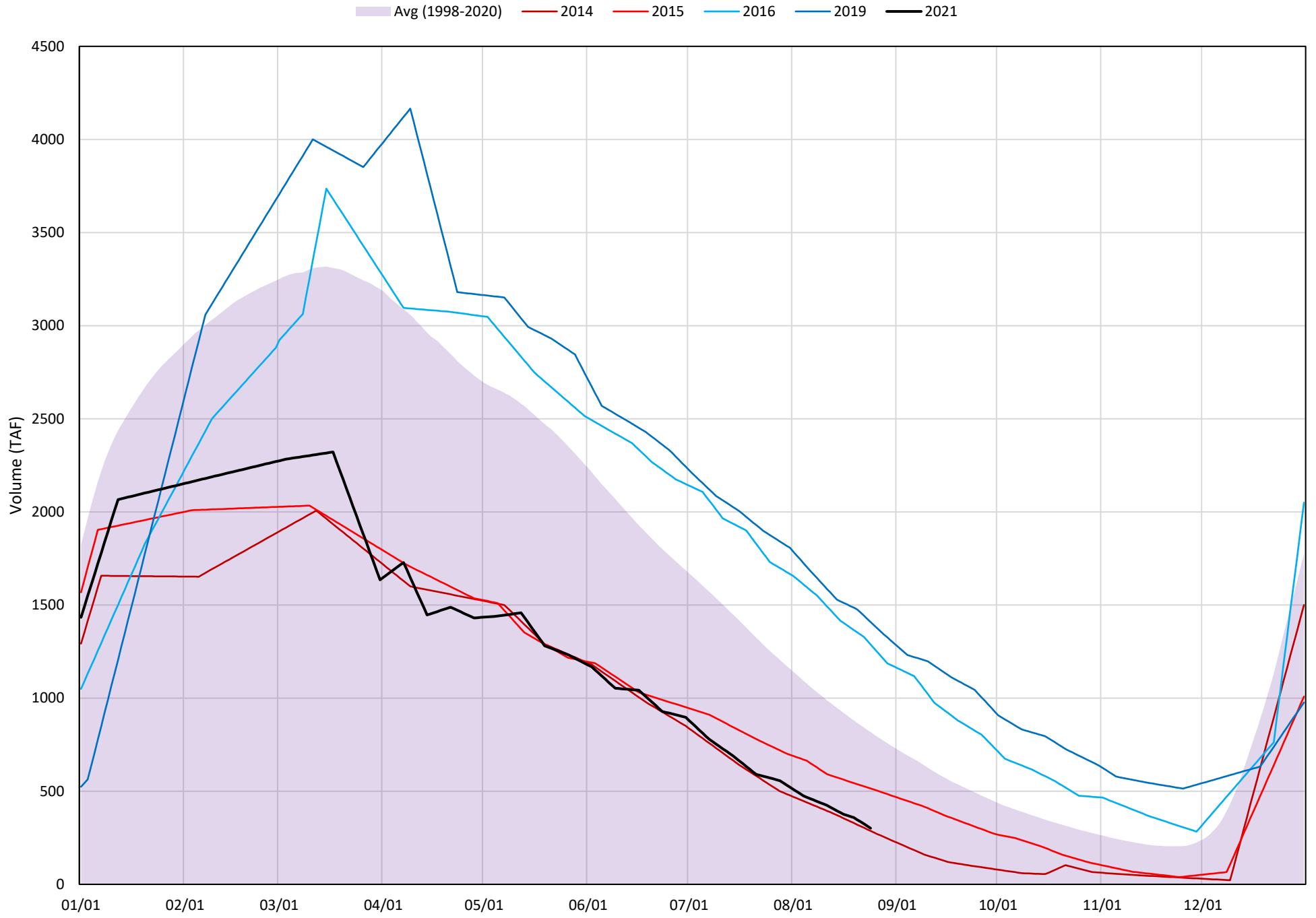
2021

Page	Description
6	- Shasta Lake Isothermobaths Plot
7	- Shasta Lake Cold Water Pool Volume $\leq 52^{\circ}\text{F}$
8	- Shasta Lake Cold Water Pool Volume $\leq 50^{\circ}\text{F}$
9	- Shasta Lake Cold Water Pool Volume $\leq 48^{\circ}\text{F}$
10	- Shasta Lake Cold Water Pool Volume $\leq 52^{\circ}\text{F}$ - Percent Exceedances
11	- Shasta Lake Cold Water Pool Volume $\leq 50^{\circ}\text{F}$ - Percent Exceedances
12	- Shasta Lake Cold Water Pool Volume $\leq 48^{\circ}\text{F}$ - Percent Exceedances
13	- Shasta Lake Cold Water Pool Comparison by Year

Shasta Lake Isothermobaths Plot - 2021

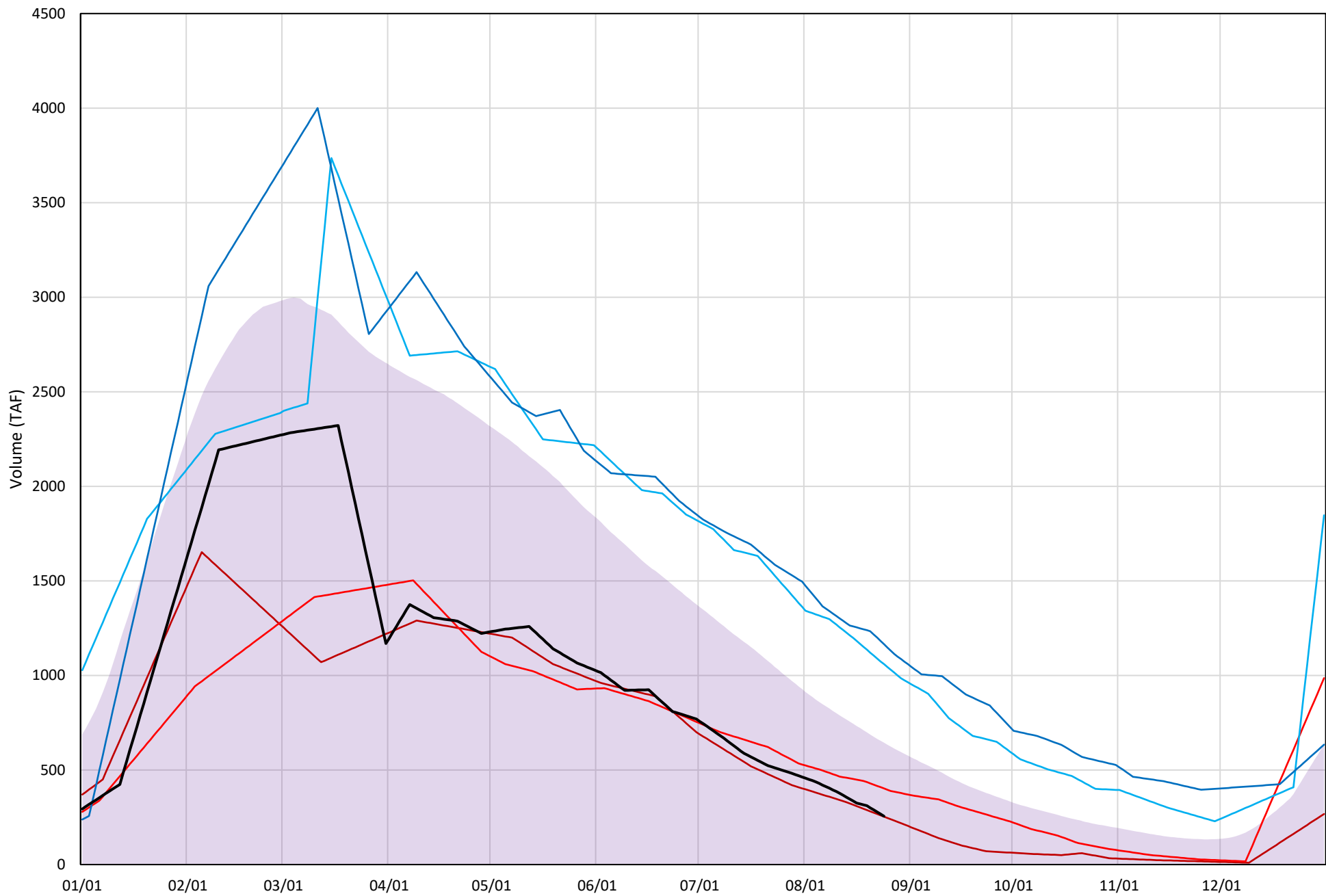


Shasta Lake Cold Water Pool Volume $\leq 52^{\circ}\text{F}$



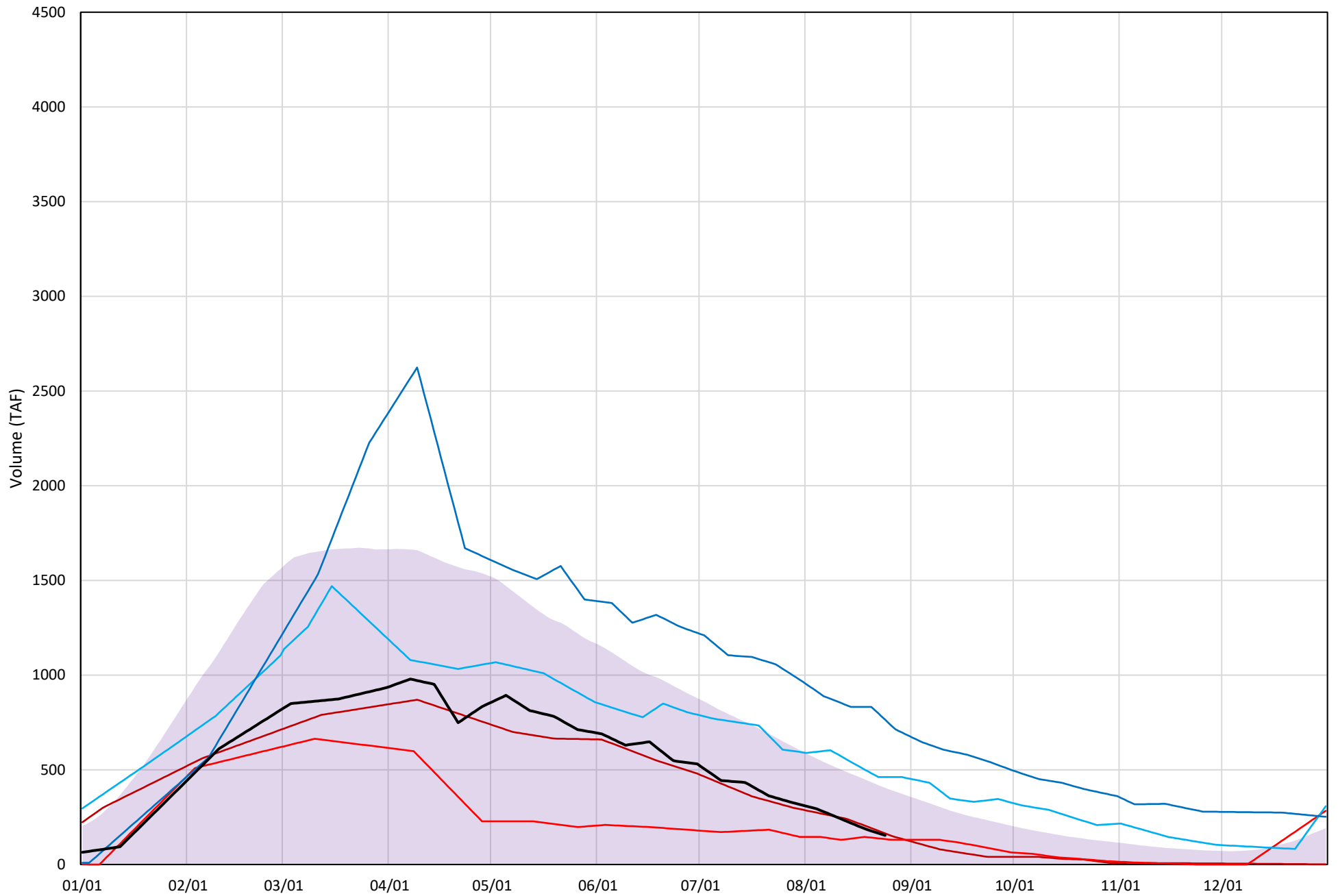
Shasta Lake Cold Water Pool Volume $\leq 50^{\circ}\text{F}$

Avg (1998-2020) 2014 2015 2016 2019 2021



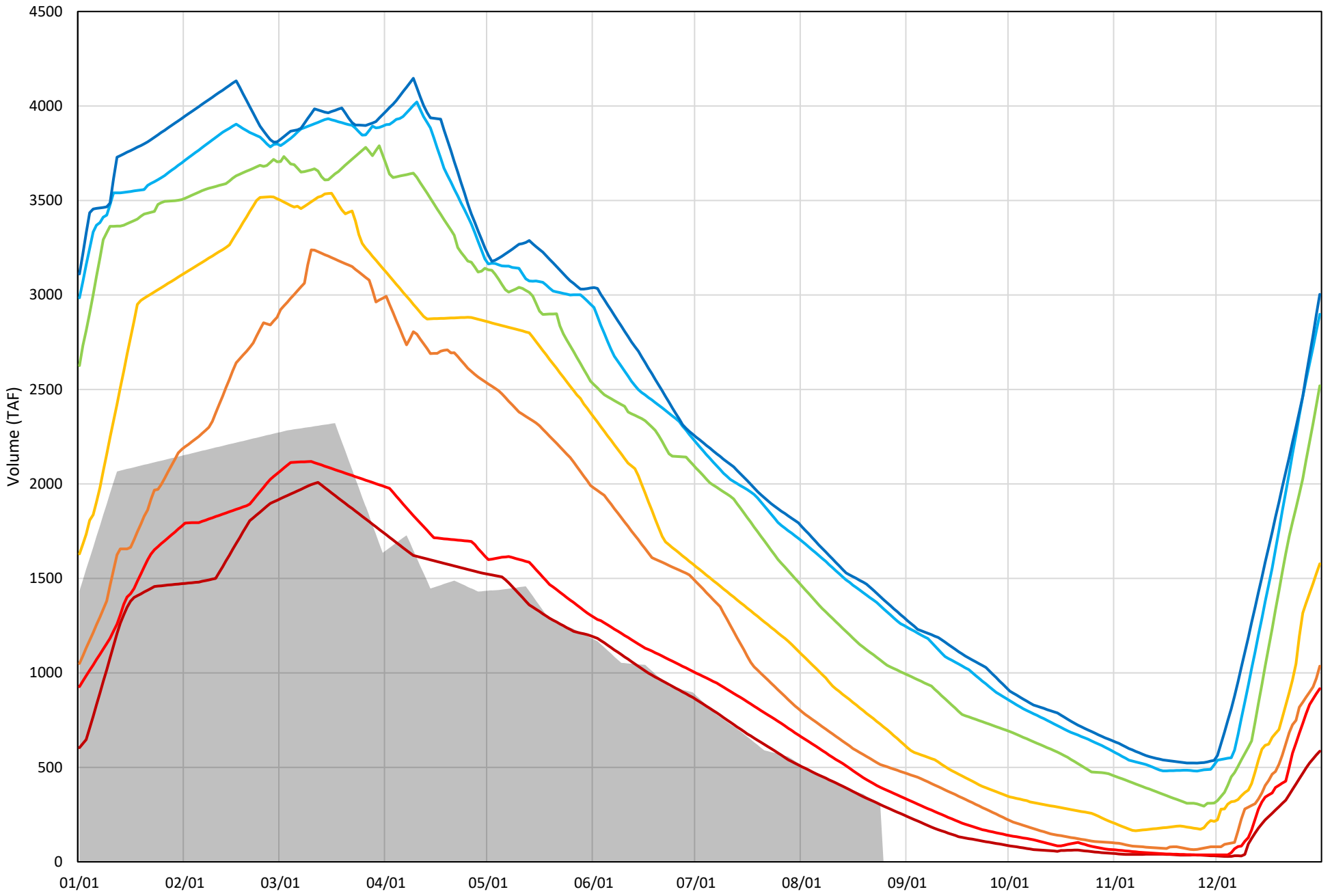
Shasta Lake Cold Water Pool Volume $\leq 48^{\circ}\text{F}$

Avg (1998-2020) 2014 2015 2016 2019 2021



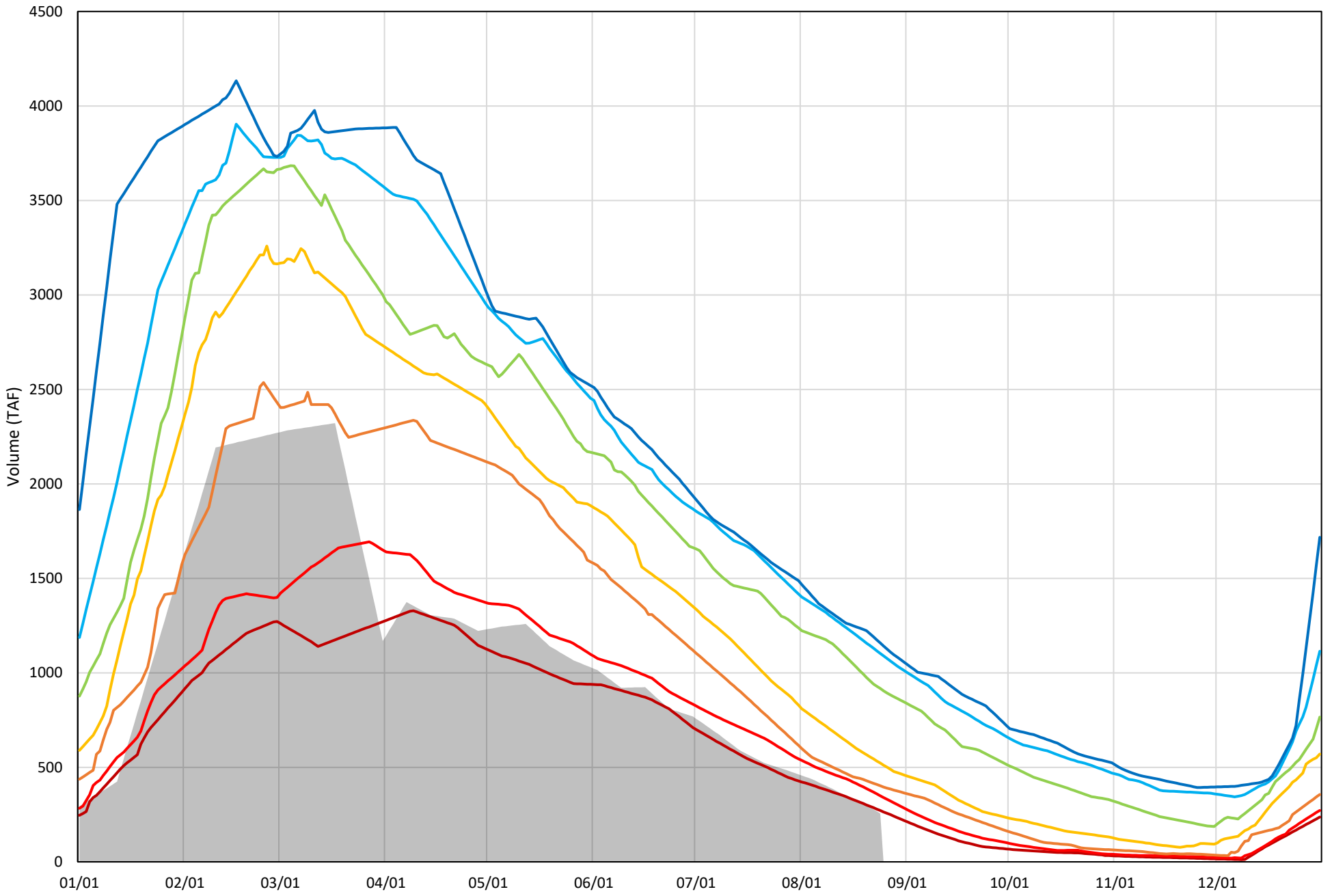
Shasta Lake Cold Water Pool Volume $\leq 52^{\circ}\text{F}$ - Percent Exceedances (1998-2020)

2021 95 90 75 50 25 10 5



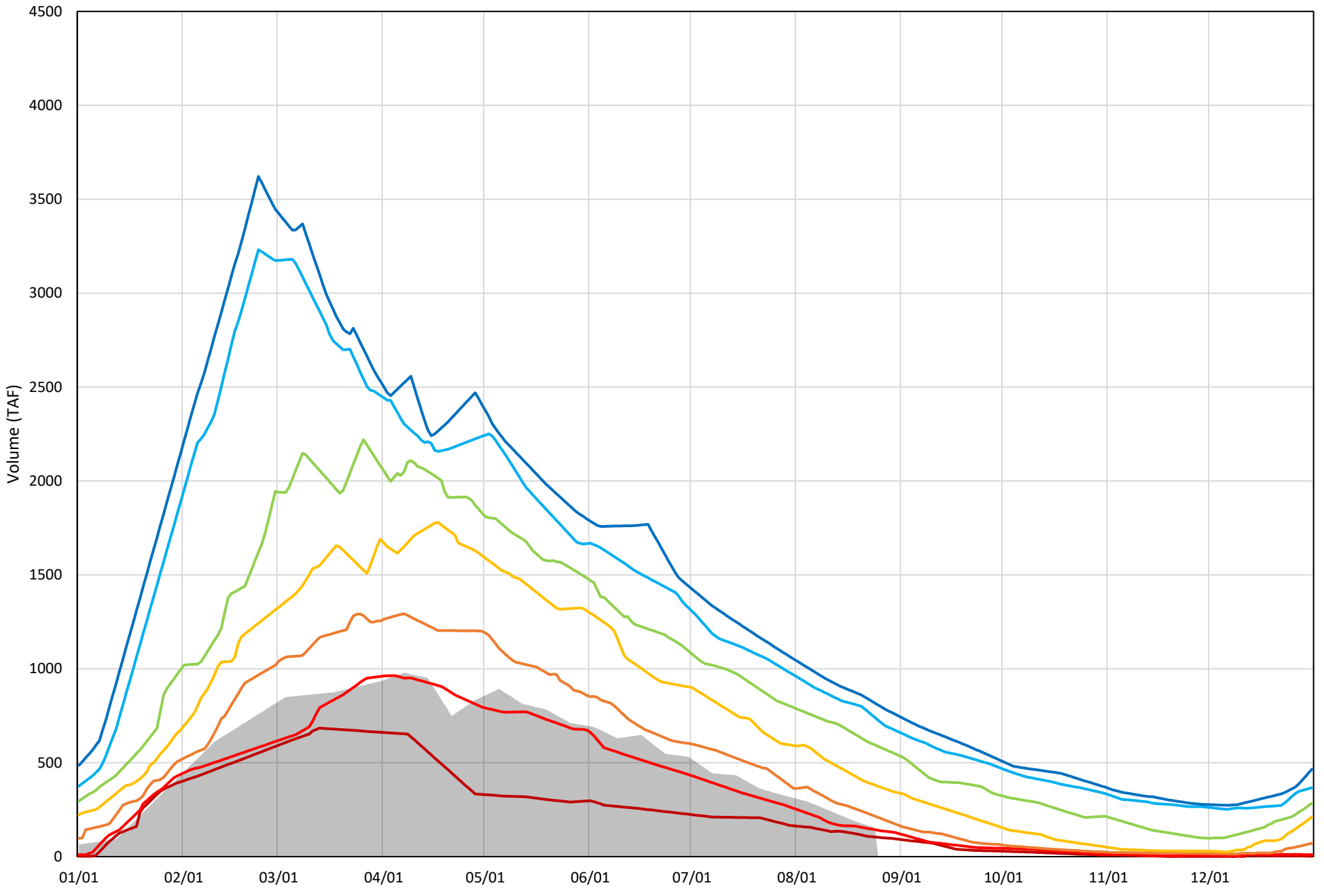
Shasta Lake Cold Water Pool Volume $\leq 50^{\circ}\text{F}$ - Percent Exceedances (1998-2020)

2021 95 90 75 50 25 10 5




Shasta Lake Cold Water Pool Volume $\leq 48^{\circ}\text{F}$ - Percent Exceedances (1998-2020)

2021 95 90 75 50 25 10 5




Shasta Lake Cold Water Pool Comparison by Year (for Specified Date)

Aug-25 2021	Δ TAF				% Δ			
	$\leq 52^\circ$	$\leq 50^\circ$	$\leq 48^\circ$	Abs. Avg.	$\leq 52^\circ$	$\leq 50^\circ$	$\leq 48^\circ$	Abs. Avg.
1998	427	167	4	199	142	65	2	70
1999	766	661	551	660	254	259	359	291
2000	324	175	17	172	107	68	11	62
2001	271	223	227	240	90	87	148	108
2002	581	472	371	475	193	185	242	206
2003	487	144	-57	229	161	56	-37	85
2004	128	104	76	103	43	41	49	44
2005	213	119	62	131	71	47	40	53
2006	636	444	307	463	211	174	200	195
2007	296	267	262	275	98	104	170	124
2008	68	88	150	102	23	34	98	52
2009	200	167	183	184	66	65	120	84
2010	1009	757	497	754	335	296	324	318
2011	1084	877	677	879	360	343	441	381
2012	747	653	441	614	248	255	287	263
2013	356	309	278	314	118	121	181	140
2014	-15	-2	10	9	-5	-1	7	4
2015	213	147	-19	126	71	57	-13	47
2016	987	804	308	700	327	314	201	281
2017	959	731	506	732	318	286	330	311
2018	651	465	219	445	216	182	143	180
2019	1107	909	611	876	367	356	398	374
2020	374	252	111	245	124	98	72	98
2021	0	0	0	0	0	0	0	0



Historic - Current



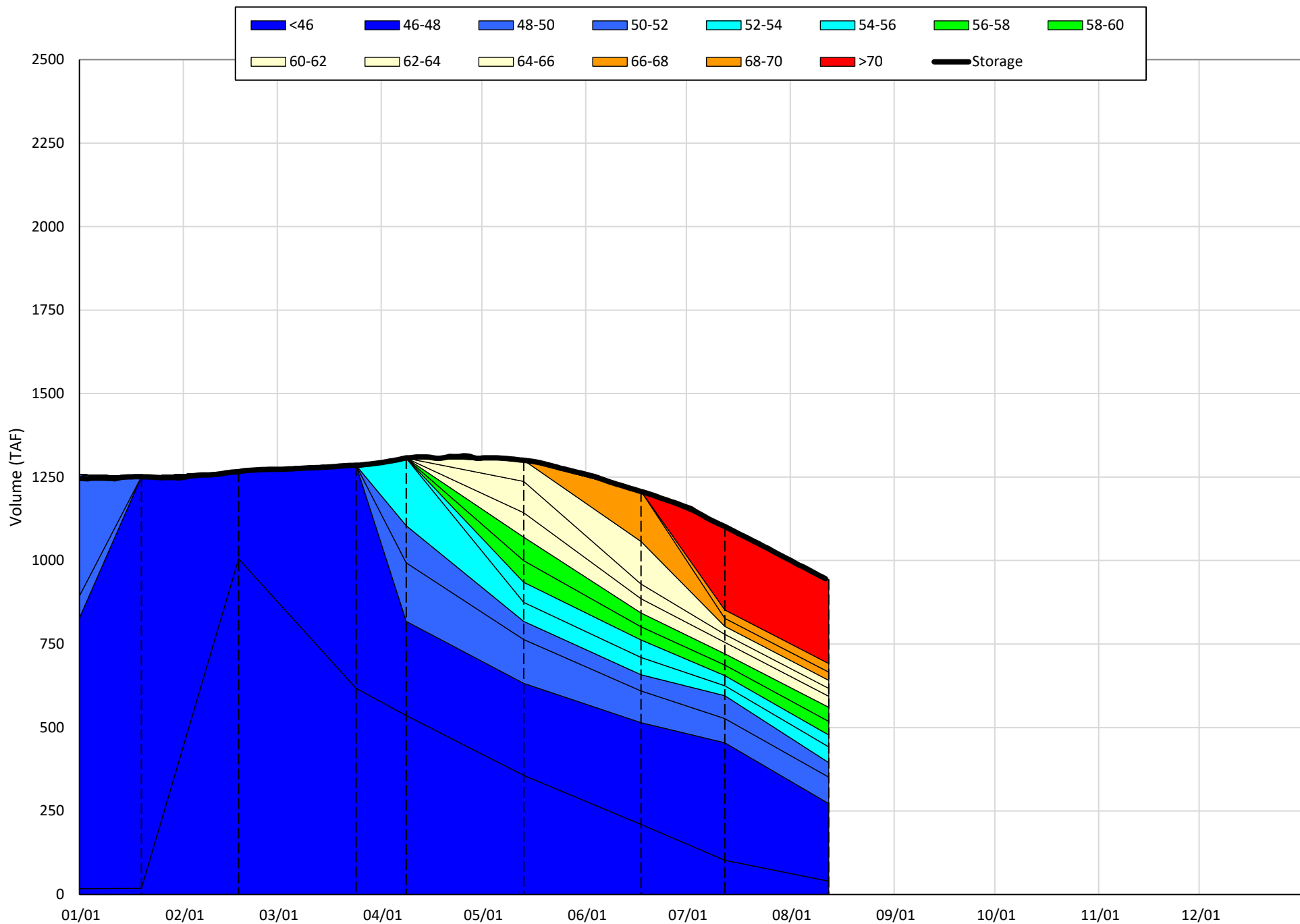
(Historic - Current) / Current

Trinity Lake Isothermobaths & Cold Water Pool Statistics

2021

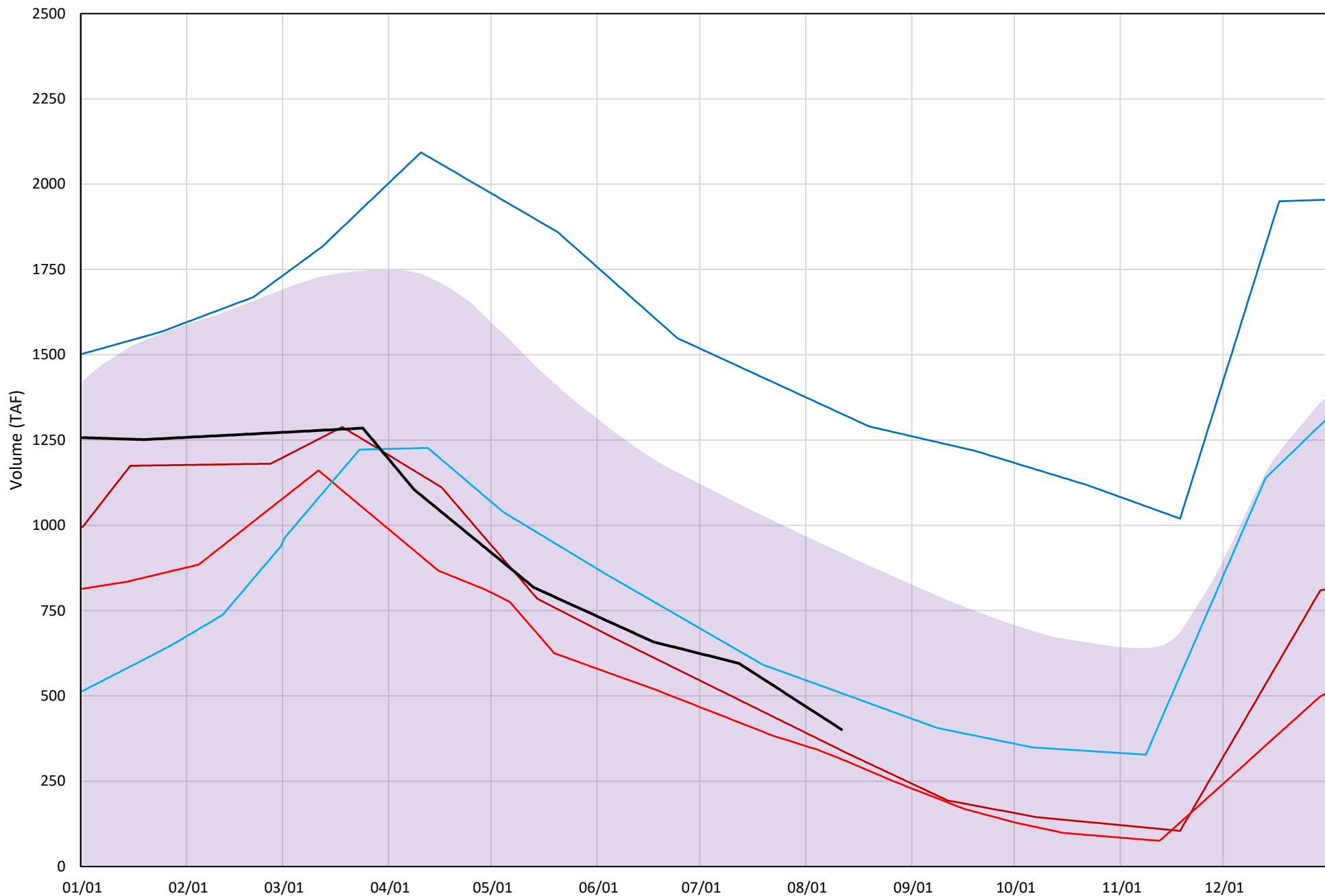
Page	Description
15	- Trinity Lake Isothermobaths Plot
16	- Trinity Lake Cold Water Pool Volume $\leq 52^{\circ}\text{F}$
17	- Trinity Lake Cold Water Pool Volume $\leq 50^{\circ}\text{F}$
18	- Trinity Lake Cold Water Pool Volume $\leq 48^{\circ}\text{F}$
19	- Trinity Lake Cold Water Pool Volume $\leq 52^{\circ}\text{F}$ - Percent Exceedances
20	- Trinity Lake Cold Water Pool Volume $\leq 50^{\circ}\text{F}$ - Percent Exceedances
21	- Trinity Lake Cold Water Pool Volume $\leq 48^{\circ}\text{F}$ - Percent Exceedances
22	- Trinity Lake Cold Water Pool Comparison by Year

Trinity Lake Isothermobaths Plot - 2021



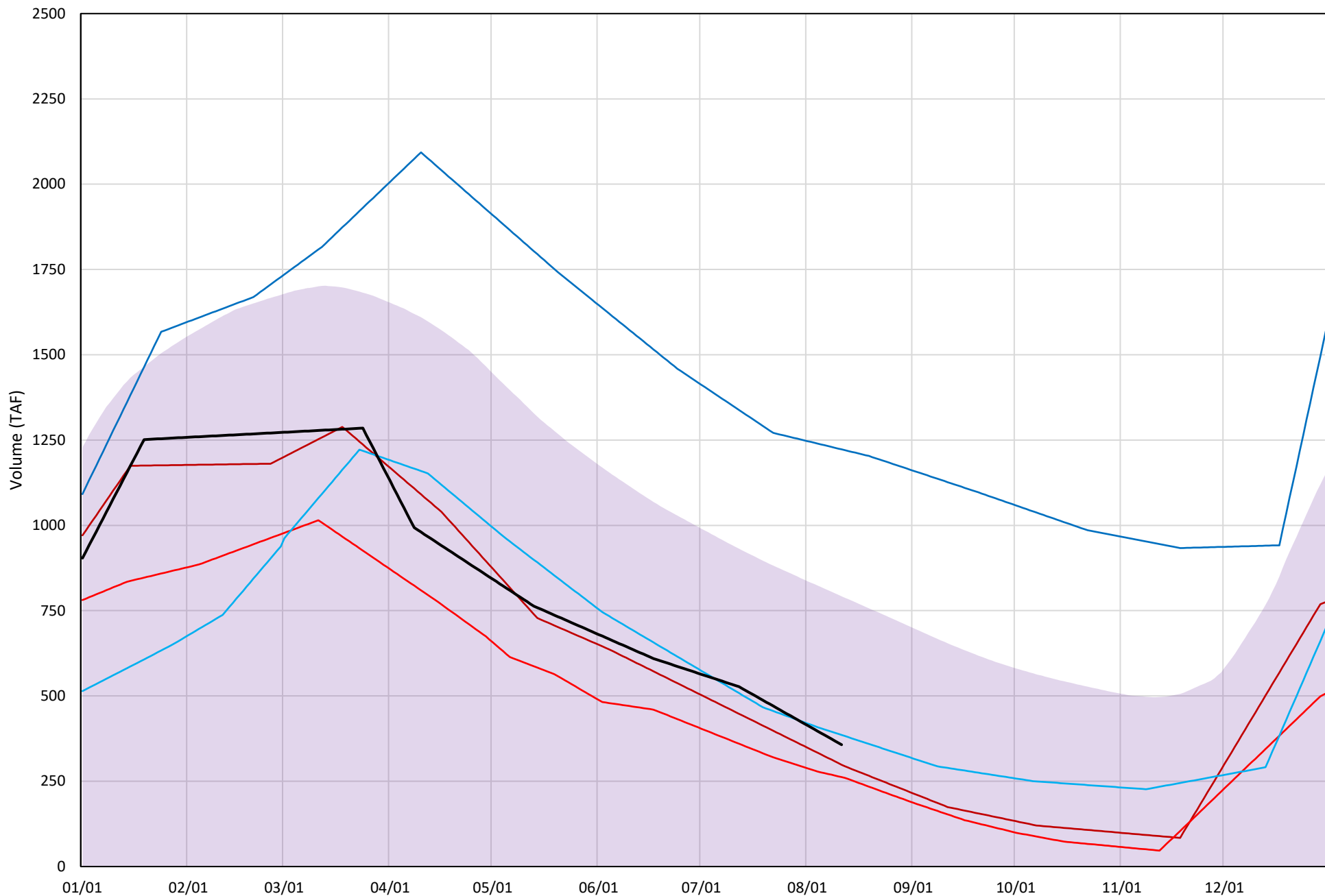
Trinity Lake Cold Water Pool Volume $\leq 52^{\circ}\text{F}$

Avg (2000-2020) 2014 2015 2016 2019 2021



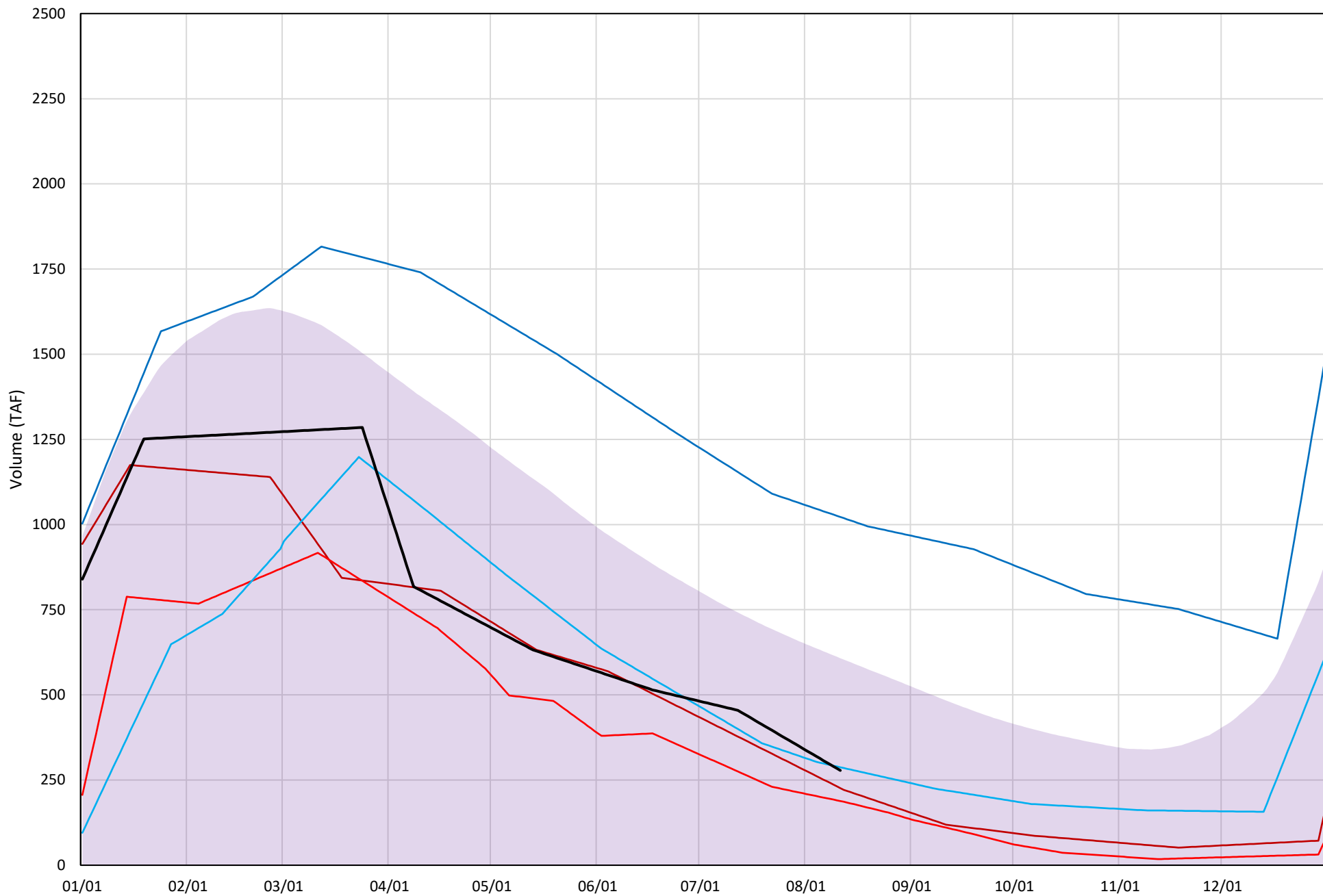
Trinity Lake Cold Water Pool Volume $\leq 50^{\circ}\text{F}$

Avg (2000-2020) 2014 2015 2016 2019 2021

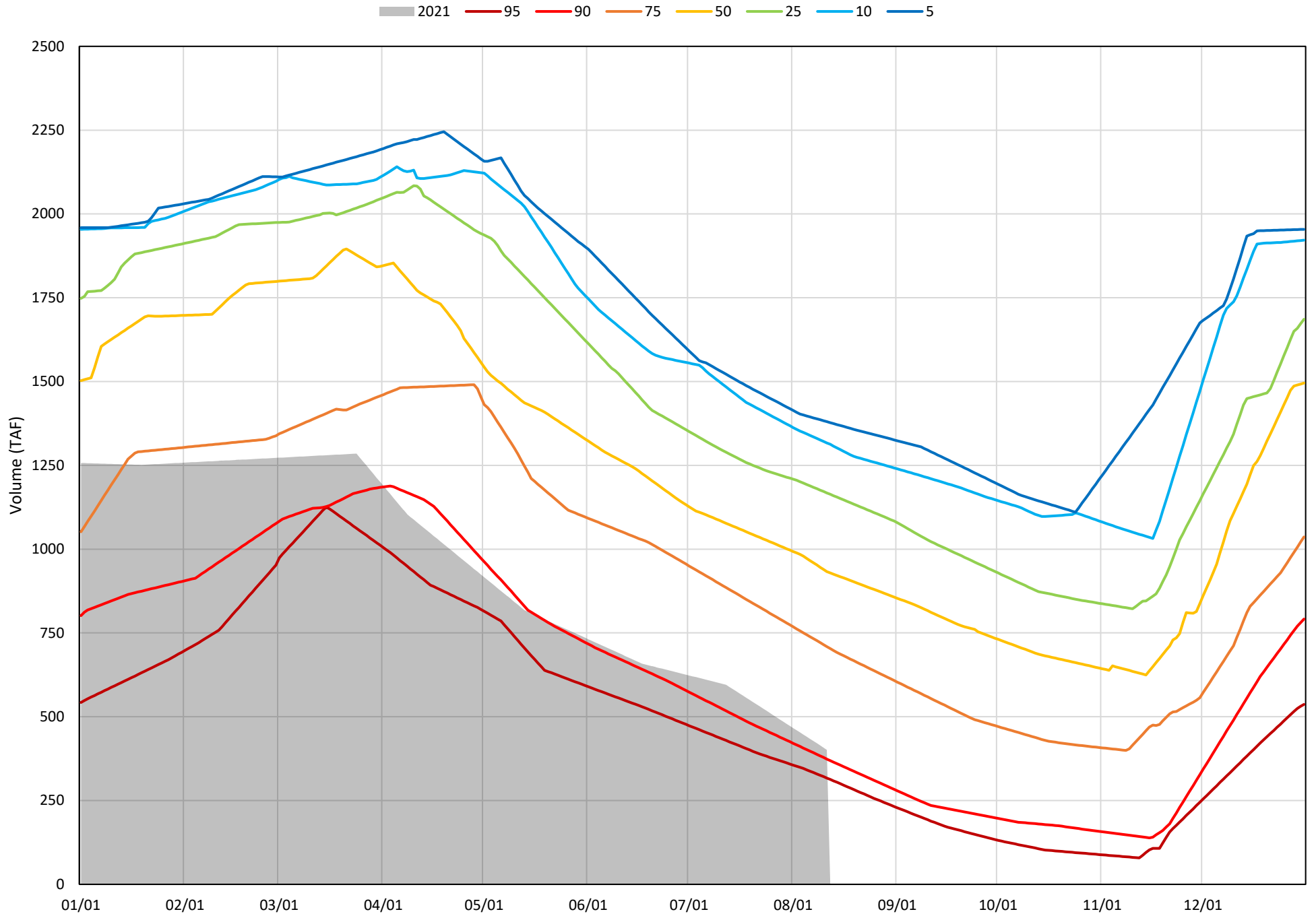


Trinity Lake Cold Water Pool Volume $\leq 48^{\circ}\text{F}$

Avg (2000-2020) 2014 2015 2016 2019 2021

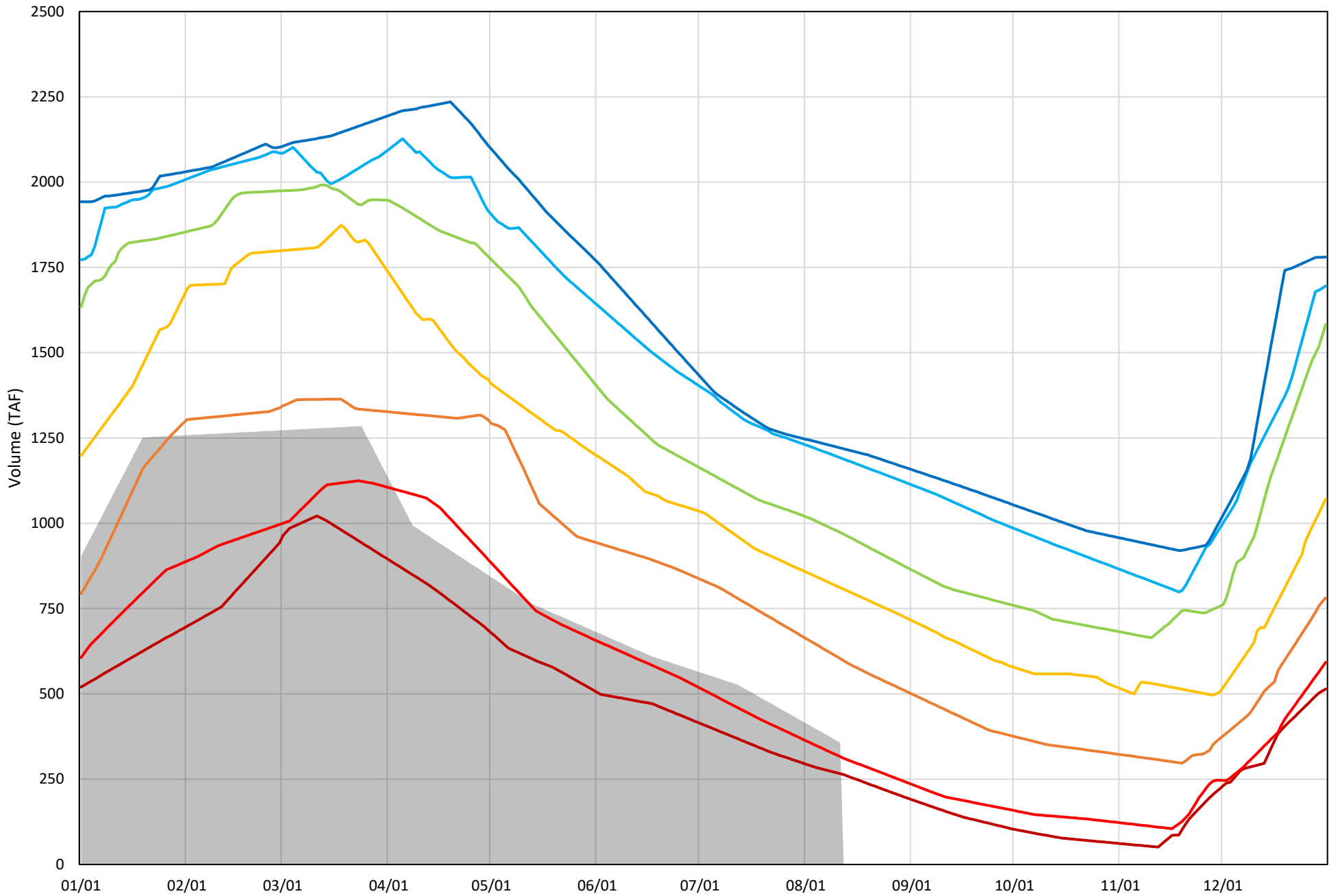


Trinity Lake Cold Water Pool Volume $\leq 52^{\circ}\text{F}$ - Percent Exceedances (2000-2020)

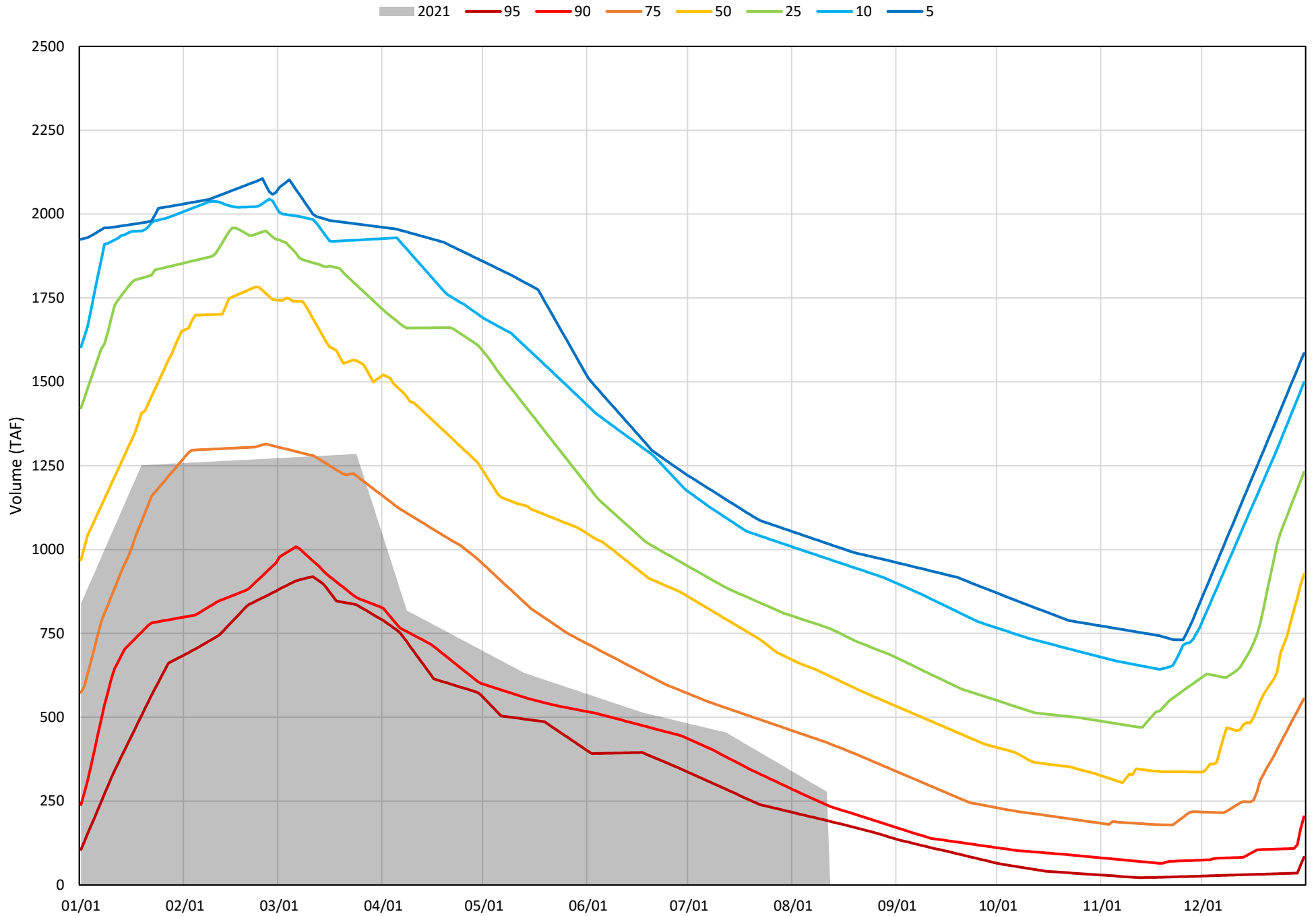


Trinity Lake Cold Water Pool Volume $\leq 50^{\circ}\text{F}$ - Percent Exceedances (2000-2020)

2021 95 90 75 50 25 10 5



Trinity Lake Cold Water Pool Volume $\leq 48^{\circ}\text{F}$ - Percent Exceedances (2000-2020)



Trinity Cold Water Pool Comparison by Year (for Specified Date)

	Δ TAF				% Δ			
	$\leq 52^\circ$	$\leq 50^\circ$	$\leq 48^\circ$	Abs. Avg.	$\leq 52^\circ$	$\leq 50^\circ$	$\leq 48^\circ$	Abs. Avg.
Aug-12 2021								
2000	634	489	344	489	158	137	123	139
2001	492	422	348	421	122	118	125	122
2002	503	454	405	454	125	127	145	133
2003	875	659	477	670	218	185	171	191
2004	532	410	259	400	132	115	93	113
2005	719	573	299	530	179	160	107	149
2006	863	736	542	714	215	206	195	205
2007	549	506	460	505	137	142	165	148
2008	263	182	102	182	65	51	37	51
2009	174	123	51	116	43	34	18	32
2010	521	393	191	369	130	110	69	103
2011	985	848	649	827	245	238	233	239
2012	814	781	707	767	203	219	254	225
2013	353	311	241	302	88	87	87	87
2014	-61	-58	-52	57	-15	-16	-19	17
2015	-87	-95	-90	90	-22	-27	-32	27
2016	107	28	9	48	27	8	3	13
2017	655	513	381	516	163	144	137	148
2018	599	556	502	552	149	156	180	162
2019	926	866	744	845	231	242	267	247
2020	458	440	352	417	114	123	126	121
2021	0	0	0	0	0	0	0	0

Historic - Current

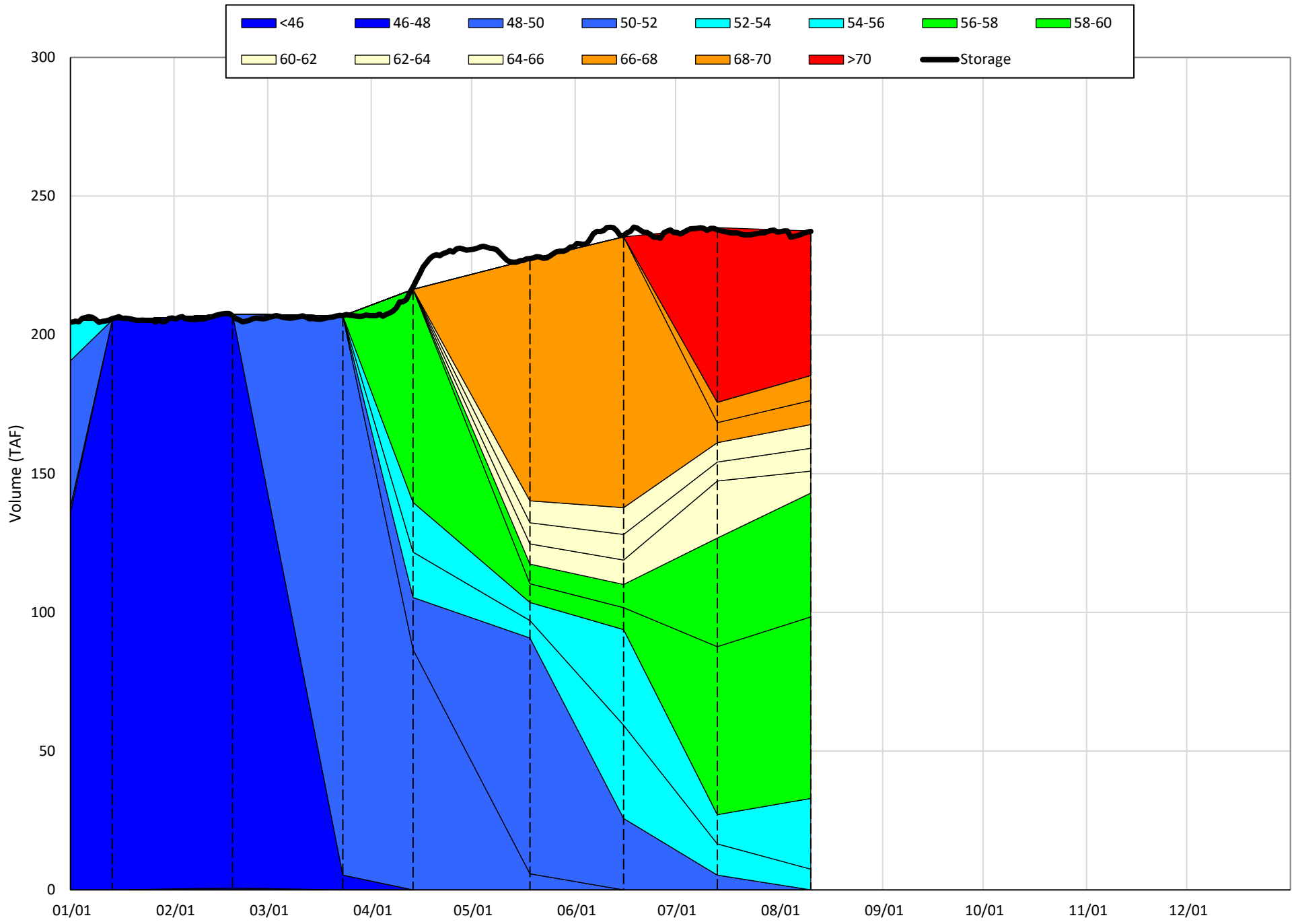
(Historic - Current) / Current

Whiskeytown Lake Isothermobaths & Cold Water Pool Statistics

2021

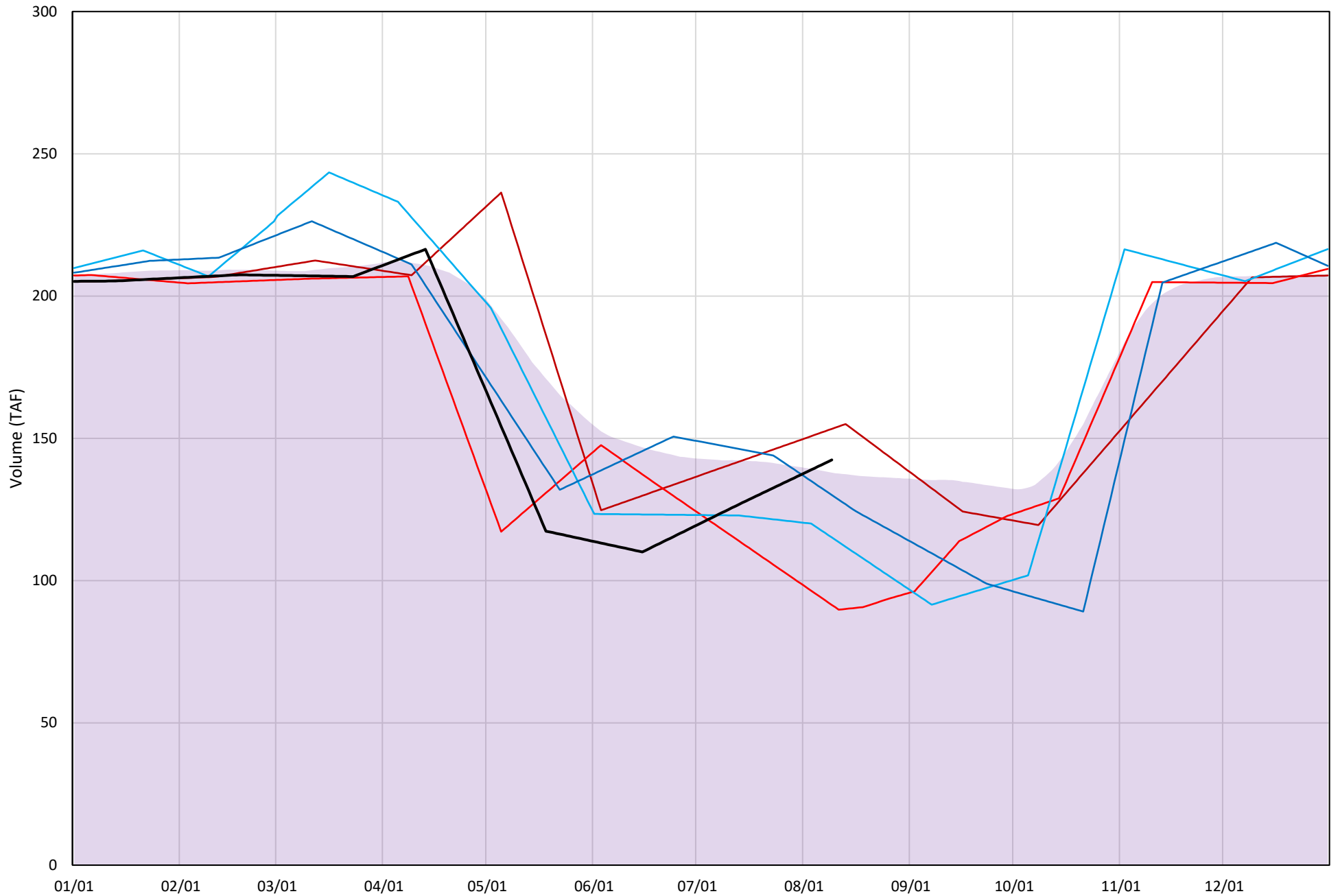
Page	Description
24	- Whiskeytown Lake Isothermobaths Plot
25	- Whiskeytown Lake Cold Water Pool Volume $\leq 60^{\circ}\text{F}$
26	- Whiskeytown Lake Cold Water Pool Volume $\leq 58^{\circ}\text{F}$
27	- Whiskeytown Lake Cold Water Pool Volume $\leq 56^{\circ}\text{F}$
28	- Whiskeytown Lake Cold Water Pool Volume $\leq 60^{\circ}\text{F}$ - Percent Exceedances
29	- Whiskeytown Lake Cold Water Pool Volume $\leq 58^{\circ}\text{F}$ - Percent Exceedances
30	- Whiskeytown Lake Cold Water Pool Volume $\leq 56^{\circ}\text{F}$ - Percent Exceedances
31	- Whiskeytown Lake Cold Water Pool Comparison by Year

Whiskeytown Lake Isothermobaths Plot - 2021



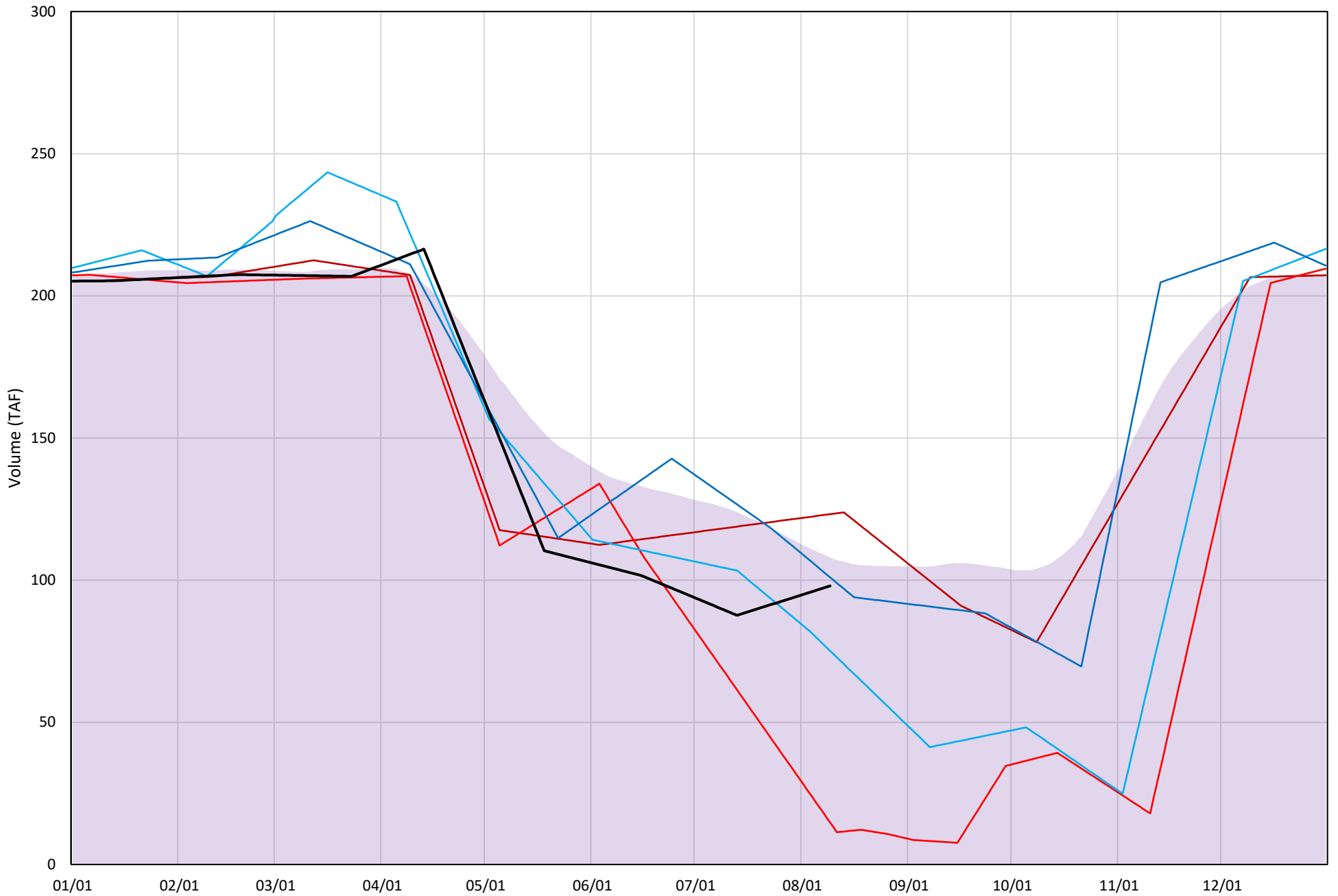
Whiskeytown Lake Cold Water Pool Volume $\leq 60^{\circ}\text{F}$

Avg (2000-2020) 2014 2015 2016 2019 2021



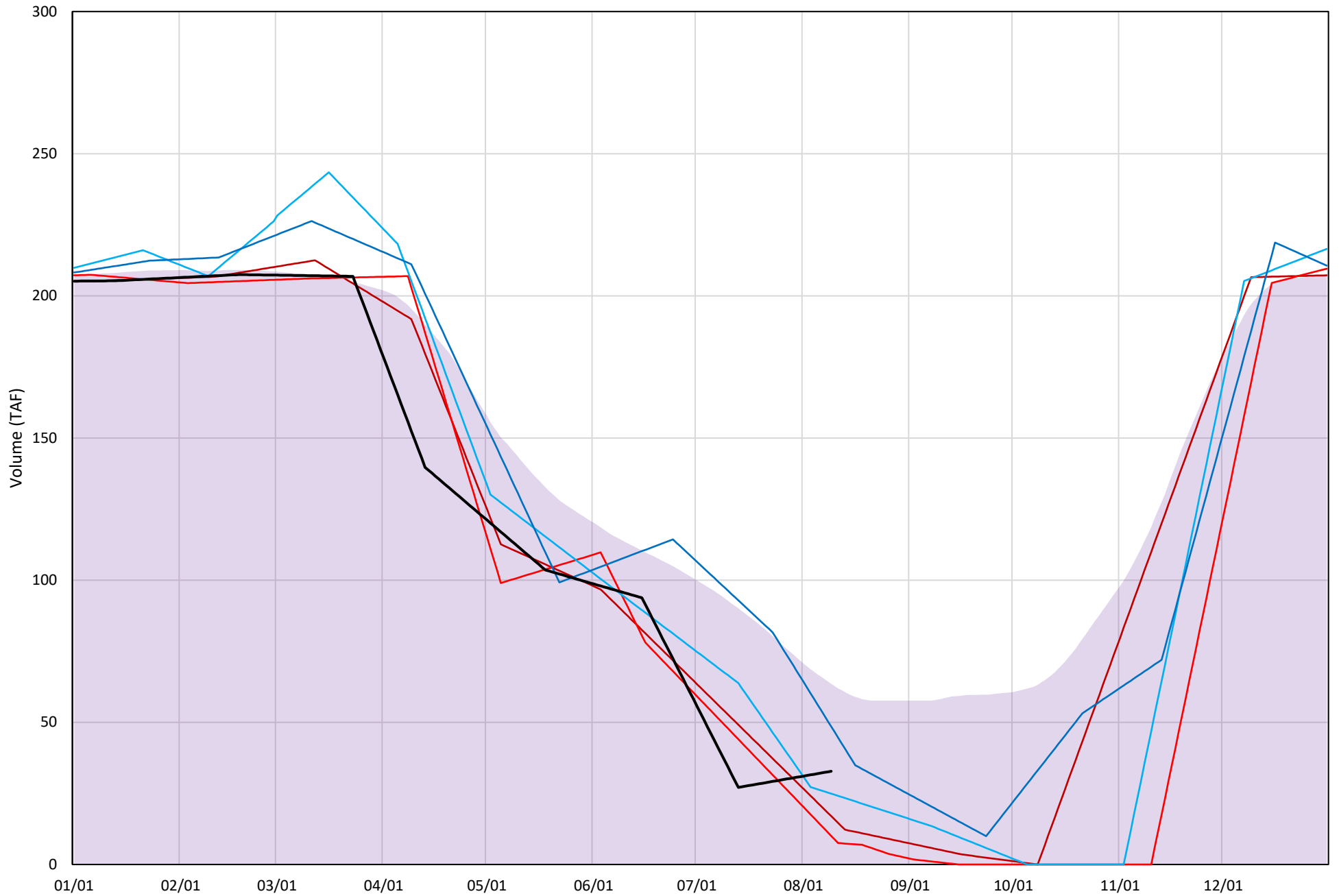
Whiskeytown Lake Cold Water Pool Volume $\leq 58^{\circ}\text{F}$

Avg (2000-2020) 2014 2015 2016 2019 2021

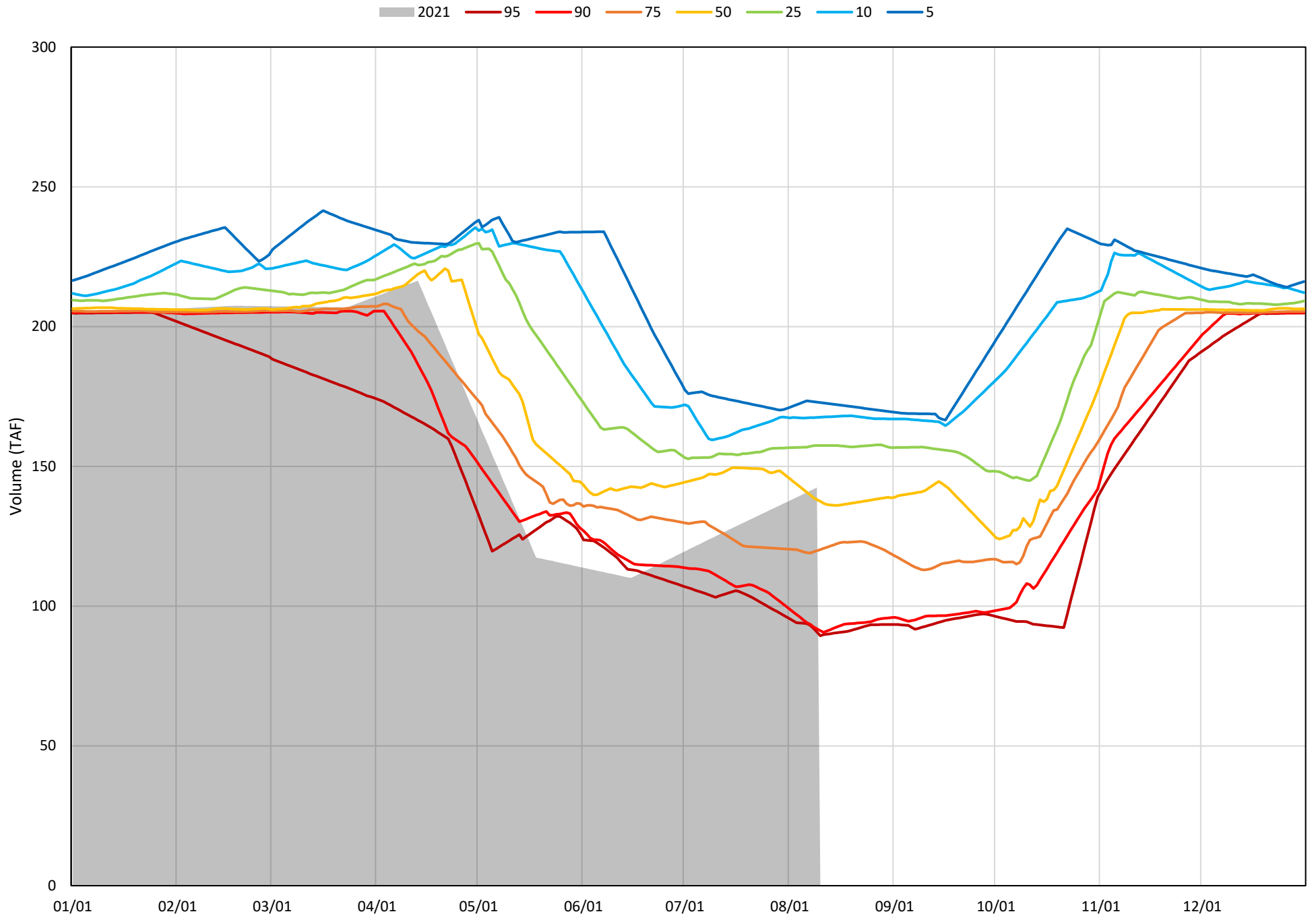


Whiskeytown Lake Cold Water Pool Volume $\leq 56^{\circ}\text{F}$

Avg (2000-2020) 2014 2015 2016 2019 2021

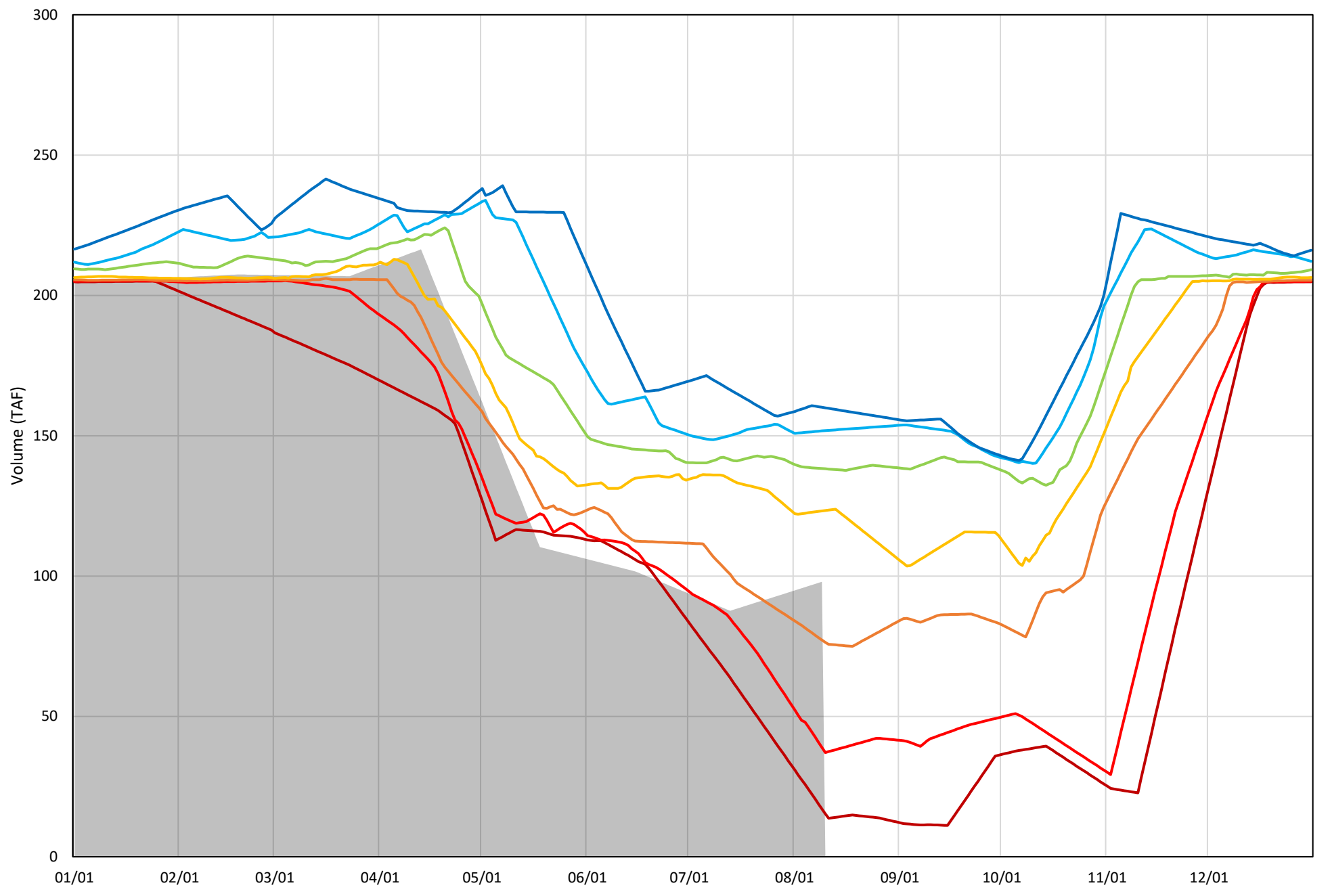


Whiskeytown Lake Cold Water Pool Volume $\leq 60^{\circ}\text{F}$ - Percent Exceedances (2000-2020)



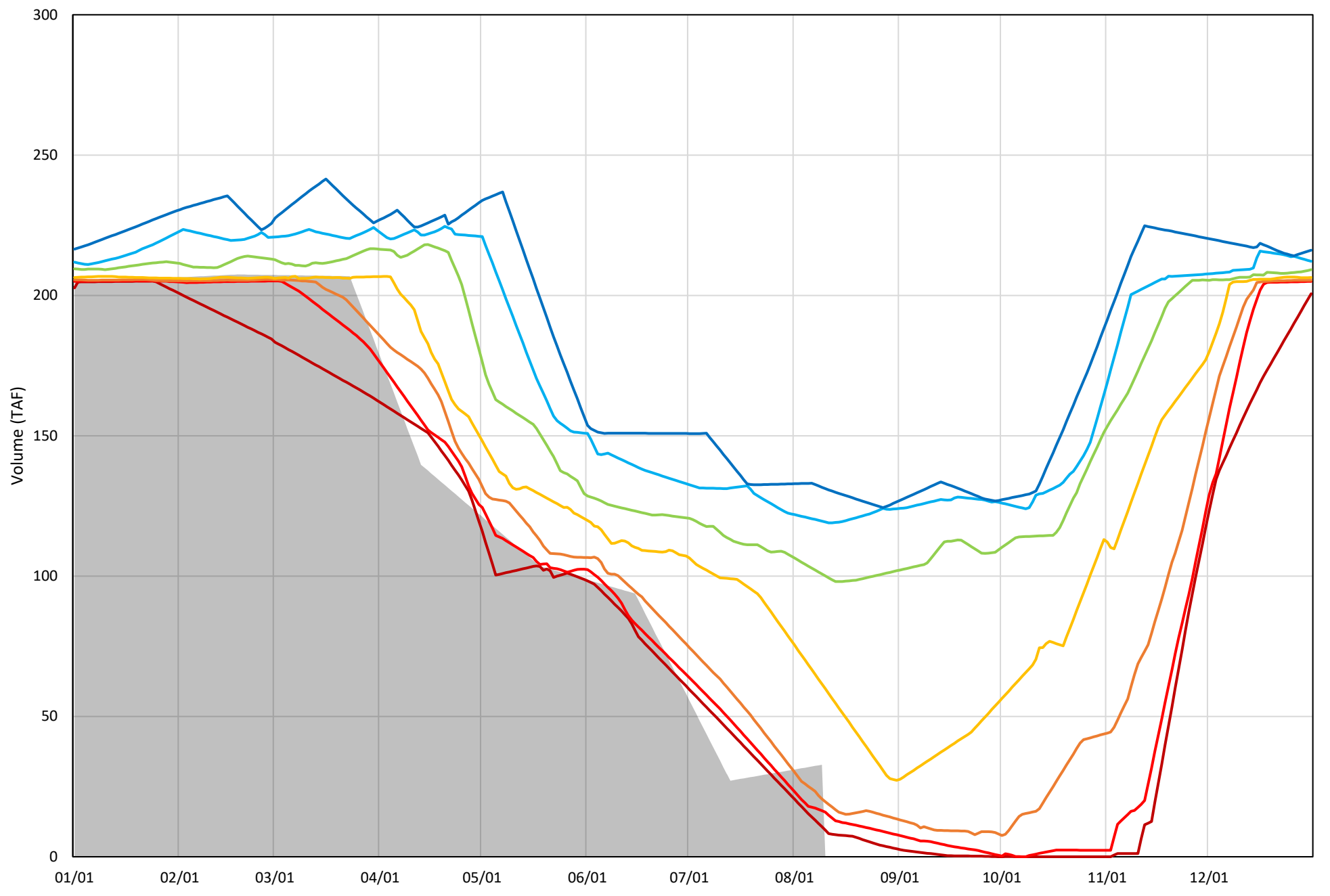
Whiskeytown Lake Cold Water Pool Volume $\leq 58^{\circ}\text{F}$ - Percent Exceedances (2000-2020)

2021 95 90 75 50 25 10 5



Whiskeytown Lake Cold Water Pool Volume $\leq 56^{\circ}\text{F}$ - Percent Exceedances (2000-2020)

2021 95 90 75 50 25 10 5



Whiskeytown Cold Water Pool Comparison by Year (for Specified Date)

Aug-10 2021	Δ TAF				% Δ			
	≤60°	≤58°	≤56°	Abs. Avg.	≤60°	≤58°	≤56°	Abs. Avg.
2000	20	53	85	53	17	67	240	108
2001	41	67	83	64	35	85	235	118
2002	38	60	58	52	32	76	166	91
2003	30	47	34	37	26	59	95	60
2004	37	51	42	43	31	64	119	72
2005	-24	-33	-17	25	-21	-41	-48	37
2006	51	74	79	68	43	93	223	120
2007	41	57	59	52	35	72	167	91
2008	43	64	67	58	37	81	190	103
2009	4	-7	-19	10	3	-9	-54	22
2010	-27	-42	-17	29	-23	-53	-49	42
2011	20	35	26	27	17	44	75	45
2012	19	14	-13	15	16	18	-36	23
2013	55	82	98	78	47	103	277	142
2014	35	44	-18	33	30	55	-52	46
2015	-26	-64	-25	39	-22	-81	-71	58
2016	-3	-4	-10	6	-2	-5	-29	12
2017	37	58	64	53	32	73	181	95
2018	17	27	6	16	14	33	17	22
2019	12	22	13	16	10	27	38	25
2020	0	0	0	0	0	0	0	0

}

Historic - Current

}

(Historic - Current) / Current