

Northern CVP Water Temperature Report

August - 2019

Page	Description
1	- Mean Daily Water Temperature, Release Flow Rates and Air Temperatures with Monthly Averages
2	- Redding 10-Day Forecasted Air Temperatures
3	- Sacramento River Mean Daily Water Temperature, Air Temperature and 10-Day Forecasted Air Temperature Plot - Water Temperature Measuring Station Details - Temperature Control Point Details
4	- Daily Maximum and 7DADM
5	- Shasta Lake Isothermobaths Plot
6	- Trinity Lake Isothermobaths Plot
7	- Whiskeytown Lake Isothermobaths Plot
x	- TCD Configuration (External Link)



All Data in this Report is Preliminary and Subject to Change

DATE	Mean Daily Water Temperatures (°F)														Mean Daily Release (CFS)			Mean Daily Air Temperatures (°F)						
	TCD ¹	SHD	SPP ¹	KWK	SAC	CCR	APR ⁴	BSF ²	JLF	BND	RDB	IGO	LWS	----- ³	Shasta Generation	Spring Creek P.P.	Keswick Total	RDD	BSF	RDB	LWS			
Jul	51.1	50.4	54.3	51.8	52.5	53.0	-	55.1	56.9	57.7	58.9	58.9	50.5	-	9218	1240	10873	82.4	78.2	78.3	-			
08/01	50.6	50.2	55.1	51.2	52.1	52.7	-	54.7	56.4	57.2	58.4	58.2	52.3	-	9927	912	10887	81.0	76.1	76.3	-			
08/02	50.7	?	50.3	55.1	51.4	52.2	52.6	-	!	-	56.1	56.9	58.2	58.4	52.1	-	9494	1491	10903	83.5	-	79.0	-	
08/03	50.7	50.2	55.4	51.4	52.1	52.9	-	#	-	56.4	57.3	58.5	58.8	52.7	-	9633	997	10890	87.0	-	80.2	-		
08/04	50.8	50.3	55.5	51.5	52.3	52.9	-	#	-	56.6	57.4	58.7	58.8	52.5	-	8756	963	10926	85.5	-	80.1	-		
08/05	50.8	50.3	55.5	51.7	52.3	52.6	-	!	-	56.0	56.8	58.1	57.6	52.1	-	9049	1269	10927	82.0	-	77.5	-		
08/06	50.9	#	-	55.5	51.9	52.5	53.0	-	54.6	56.1	56.8	57.9	58.2	!	-	9660	1125	10831	86.0	79.1	81.2	-		
08/07	50.9	#	-	55.6	51.8	52.5	52.9	53.8	54.7	56.3	57.0	58.1	?	58.2	!	-	9105	1422	10881	83.0	77.5	77.3	-	
08/08	51.3	!	-	55.6	51.8	52.6	53.1	54.0	54.8	56.3	57.0	58.1	58.2	?	53.3	-	9655	1257	10998	78.0	73.2	72.5	-	
08/09	50.9	?	50.1	55.7	51.9	52.4	52.7	53.5	54.2	55.7	56.5	57.7	?	57.3	?	52.8	-	9799	1478	11107	72.5	70.8	69.5	-
08/10	50.8	?	49.9	55.9	51.6	52.2	52.5	53.3	54.1	55.4	?	56.0	56.7	56.9	53.0	-	9168	1529	11068	70.0	67.5	70.2	-	
08/11	50.7	49.9	55.9	51.3	52.1	52.5	53.4	54.2	55.5	56.0	56.7	57.8	53.1	-	9453	1282	11088	75.0	70.4	73.1	-			
08/12	51.0	50.2	55.9	51.6	52.3	52.8	53.7	54.5	55.9	56.6	57.5	58.4	52.7	-	9315	1237	11093	82.5	76.3	75.8	-			
08/13	50.7	49.9	56.0	51.8	52.5	52.9	53.8	54.7	56.2	56.9	57.9	58.4	52.6	-	9396	1142	11091	84.0	78.5	78.9	-			
08/14	50.6	49.7	56.1	51.6	?	52.5	53.1	54.0	54.8	56.4	57.1	58.2	58.8	52.9	-	9488	1098	11092	87.0	82.0	81.7	-		
08/15	50.6	49.6	56.2	51.6	52.4	53.1	53.9	54.8	56.4	57.1	58.4	59.1	53.2	-	9504	1014	11087	89.0	83.4	85.4	-			
08/16	50.7	49.9	56.3	51.5	52.4	53.0	53.9	54.8	56.5	57.3	58.5	59.0	!	-	9661	934	11090	94.0	84.0	85.3	-			
08/17	50.7	50.0	56.3	51.6	52.3	53.0	53.8	54.5	56.2	?	56.9	58.2	58.8	!	-	9746	969	11080	86.5	80.2	79.8	-		
08/18	50.9	50.1	56.2	51.7	52.6	53.1	53.8	54.6	56.1	56.8	58.0	58.4	!	-	9215	1180	11099	80.0	74.8	73.2	-			
08/19	50.6	49.9	56.3	51.9	52.5	53.1	53.8	54.5	55.9	56.6	57.7	58.1	52.4	-	9447	1308	11011	78.0	72.8	72.7	-			
08/20	50.4	49.3	56.4	52.0	52.7	53.2	53.9	54.6	56.0	56.6	57.6	58.9	52.6	-	9261	1441	11101	78.5	73.0	72.7	-			
08/21	50.5	?	49.5	56.5	51.3	52.2	52.5	53.3	54.0	55.6	56.3	57.5	58.9	52.3	-	8819	1090	10989	82.0	76.7	77.2	-		
08/22	50.6	49.7	56.7	51.5	?	52.8	53.1	53.9	54.7	56.2	56.8	57.7	59.8	52.4	-	10045	232	10474	88.0	81.5	82.8	-		
08/23	50.5	49.5	56.3	51.6	?	52.2	52.8	53.6	54.3	55.9	56.7	58.1	59.1	52.2	-	8372	1468	10483	88.5	78.3	79.4	-		
08/24	50.6	49.8	56.4	51.7	52.4	53.2	54.0	54.8	56.3	57.1	58.1	58.2	52.3	-	8403	1519	10489	84.0	78.3	78.3	-			
08/25	50.7	49.9	56.5	51.8	52.6	53.4	54.1	54.9	56.4	57.2	58.3	58.1	52.0	-	8947	772	10499	84.5	79.1	79.9	-			
08/26	50.7	49.8	56.5	51.8	?	52.5	53.2	54.0	54.8	56.4	57.1	58.4	58.2	51.9	-	8948	1121	10399	89.5	82.8	84.8	-		
08/27	50.6	49.6	56.6	51.7	52.5	53.2	54.0	54.8	56.4	57.2	58.4	58.0	52.3	-	8855	688	9999	88.0	81.8	81.0	-			
08/28	50.4	49.3	56.6	51.5	?	52.4	52.9	53.7	54.4	56.1	56.9	58.3	58.1	52.4	-	8546	1053	9993	86.0	80.0	80.5	-		
08/29	50.5	49.4	56.6	51.3	52.2	52.9	53.8	54.6	56.2	56.9	58.0	58.8	54.4	-	8907	571	9989	80.0	75.6	75.8	-			
08/30	50.3	50.3	56.7	51.5	52.1	53.0	53.7	54.5	56.1	!	-	58.2	58.6	54.9	-	7751	1036	9533	81.0	75.7	76.2	-		
08/31	50.3	49.3	56.7	51.4	52.2	53.1	53.8	54.4	55.9	!	-	57.7	58.3	54.5	-	8340	872	9492	80.5	74.0	74.3	-		
Aug	50.7	49.9	56.1	51.6	52.4	52.9	53.8	54.6	56.1	56.9	58.0	58.4	52.8	-	9183	1112	10729	83.1	77.2	77.8	-			

Total CFS	284665	34470	332589
Total AF	564621	68370	659677

Legend

- ? = 1-9 hours of data missing (Average includes estimations)
- ! = 10 or more hours of data missing (Average not calculated)
- # = Station out of service
- ↑ = Record high air temperature
- ↓ = Record low air temperature
- = Monthly Averages

Notes

- ¹ Temperatures are weighted averages based on individual penstock flow and temperature
- Highlighted cells in the TCD column indicate a TCD change was made on that day
- ² Current control point (see page 3 for more details)
- ³ Column not used this month
- ⁴ APR = Airport Road. This is a virtual site interpolated linearly between CCR and BSF based on distance.

D A T E	Redding (RDD) Daily Air Temperatures (°F)																																				
	Actual			Forecasted																																	
	Previous Day			Current Day			1 Day			2 Days			3 Days			4 Days			5 Days			6 Days			7 Days			8 Days			9 Days			10 Days			
	↓	↑	Avg	↓	↑	Avg	↓	↑	Avg	↓	↑	Avg	↓	↑	Avg	↓	↑	Avg	↓	↑	Avg	↓	↑	Avg	↓	↑	Avg	↓	↑	Avg	↓	↑	Avg	↓	↑	Avg	
08/01	65	100	82.5	64	98	81.0	62	100	81.0	64	103	83.5	65	103	84.0	66	103	84.5	65	100	82.5	63	96	79.5	63	93	78.0	62	95	78.5	65	96	80.5	65	99	82.0	
08/02	64	98	81.0	68	99	83.5	64	104	84.0	66	102	84.0	66	102	84.0	67	101	84.0	63	95	79.0	60	93	76.5	62	92	77.0	64	97	80.5	66	98	82.0	64	98	81.0	
08/03	66	101	83.5	NR	NR	NR	NR	NR	NR	NR	NR	NR	NR	NR	NR	NR	NR	NR	NR	NR	NR	NR	NR	NR	NR	NR	NR	NR	NR	NR	NR	NR	NR	NR	NR	NR	NR
08/04	70	104	87.0	70	101	85.5	65	102	83.5	66	101	83.5	62	96	79.0	59	93	76.0	59	92	75.5	59	94	76.5	65	96	80.5	65	101	83.0	68	101	84.5	66	101	83.5	
08/05	70	101	85.5	65	103	84.0	67	101	84.0	64	97	80.5	61	94	77.5	61	90	75.5	58	90	74.0	60	97	78.5	65	101	83.0	67	103	85.0	67	99	83.0	65	97	81.0	
08/06	64	100	82.0	71	100	85.5	63	97	80.0	61	93	77.0	60	87	73.5	59	85	72.0	58	95	76.5	61	101	81.0	67	103	85.0	67	103	85.0	67	99	83.0	65	98	81.5	
08/07	70	102	86.0	67	100	83.5	61	94	77.5	61	88	74.5	58	82	70.0	59	95	77.0	62	101	81.5	64	102	83.0	67	103	85.0	67	100	83.5	67	97	82.0	62	95	78.5	
08/08	66	100	83.0	65	96	80.5	63	90	76.5	57	83	70.0	59	95	77.0	62	100	81.0	63	101	82.0	64	100	82.0	67	102	84.5	67	103	85.0	68	98	83.0	64	96	80.0	
08/09	64	92	78.0	66	86	76.0	57	81	69.0	58	93	75.5	64	98	81.0	65	99	82.0	62	96	79.0	60	92	76.0	63	98	80.5	65	101	83.0	66	99	82.5	64	96	80.0	
08/10	60	85	72.5	61	80	70.5	55	92	73.5	59	97	78.0	62	98	80.0	62	97	79.5	61	93	77.0	60	94	77.0	63	96	79.5	63	96	79.5	65	98	81.5	64	97	80.5	
08/11	61	79	70.0	60	93	76.5	59	97	78.0	61	99	80.0	64	100	82.0	63	95	79.0	61	94	77.5	61	91	76.0	63	97	80.0	65	100	82.5	67	100	83.5	66	100	83.0	
08/12	59	91	75.0	66	98	82.0	63	100	81.5	65	104	84.5	67	102	84.5	64	95	79.5	60	91	75.5	59	93	76.0	65	99	82.0	68	103	85.5	68	100	84.0	65	95	80.0	
08/13	66	99	82.5	68	102	85.0	66	106	86.0	69	107	88.0	68	101	84.5	64	94	79.0	60	92	76.0	60	97	78.5	65	100	82.5	65	99	82.0	65	95	80.0	64	94	79.0	
08/14	67	101	84.0	68	106	87.0	70	108	89.0	70	104	87.0	66	99	82.5	63	95	79.0	61	96	78.5	63	99	81.0	64	101	82.5	67	100	83.5	67	97	82.0	64	95	79.5	
08/15	67	107	87.0	71	108	89.5	69	104	86.5	67	101	84.0	63	94	78.5	61	95	78.0	62	100	81.0	64	102	83.0	66	98	82.0	65	96	80.5	66	95	80.5	64	95	79.5	
08/16	69	109	89.0	83	106	94.5	67	102	84.5	62	94	78.0	61	96	78.5	63	99	81.0	64	102	83.0	65	101	83.0	67	98	82.5	67	97	82.0	65	98	81.5	64	95	79.5	
08/17	82	106	94.0	72	100	86.0	63	94	78.5	60	95	77.5	62	100	81.0	64	104	84.0	66	102	84.0	67	100	83.5	67	99	83.0	65	101	83.0	67	100	83.5	65	99	82.0	
08/18	72	101	86.5	65	93	79.0	60	93	76.5	61	97	79.0	63	103	83.0	66	104	85.0	66	101	83.5	66	100	83.0	67	103	85.0	67	104	85.5	67	98	82.5	63	97	80.0	
08/19	65	95	80.0	53	95	74.0	61	97	79.0	63	101	82.0	67	104	85.5	67	103	85.0	67	102	84.5	66	104	85.0	64	100	82.0	63	103	83.0	65	99	82.0	65	99	82.0	
08/20	62	94	78.0	62	95	78.5	63	98	80.5	66	101	83.5	67	103	85.0	68	103	85.5	67	103	85.0	67	105	86.0	66	103	84.5	68	102	85.0	66	98	82.0	65	97	81.0	
08/21	62	95	78.5	67	99	83.0	66	102	84.0	65	104	84.5	68	103	85.5	66	103	84.5	67	104	85.5	68	106	87.0	69	104	86.5	69	103	86.0	68	100	84.0	64	98	81.0	
08/22	64	100	82.0	77	101	89.0	66	104	85.0	67	102	84.5	66	103	84.5	67	107	87.0	69	107	88.0	69	105	87.0	69	99	84.0	66	97	81.5	67	96	81.5	63	96	79.5	
08/23	76	100	88.0	81	104	92.5	66	102	84.0	65	103	84.0	66	106	86.0	67	105	86.0	66	102	84.0	65	98	81.5	67	97	82.0	65	98	81.5	64	94	79.0	61	94	77.5	
08/24	75	102	88.5	69	102	85.5	68	102	85.0	69	105	87.0	70	107	88.5	67	102	84.5	67	99	83.0	65	97	81.0	65	99	82.0	64	101	82.5	64	97	80.5	62	94	78.0	
08/25	68	100	84.0	69	102	85.5	68	105	86.5	69	107	88.0	71	103	87.0	69	100	84.5	66	100	83.0	64	100	82.0	63	99	81.0	64	98	81.0	63	94	78.5	61	96	78.5	
08/26	69	100	84.5	71	106	88.5	68	108	88.0	69	101	85.0	68	100	84.0	66	99	82.5	63	98	80.5	63	98	80.5	63	97	80.0	64	94	79.0	62	93	77.5	62	94	78.0	
08/27	71	108	89.5	73	109	91.0	69	101	85.0	67	96	81.5	65	96	80.5	63	98	80.5	62	97	79.5	62	95	78.5	64	97	80.5	63	100	81.5	63	96	79.5	62	95	78.5	
08/28	70	106	88.0	74	102	88.0	68	98	83.0	64	97	80.5	63	98	80.5	63	97	80.0	62	96	79.0	62	96	79.0	62	89	75.5	60	88	74.0	60	90	75.0	60	93	76.5	
08/29	72	100	86.0	73	96	84.5	63	96	79.5	62	96	79.0	62	97	79.5	63	96	79.5	62	97	79.5	62	98	80.0	67	100	83.5	66	100	83.0	64	94	79.0	59	91	75.0	
08/30	69	91	80.0	67	97	82.0	62	98	80.0	62	97	79.5	63	98	80.5	63	99	81.0	62	97	79.5	62	98	80.0	62	97	79.5	63	97	80.0	63	95	79.0	60	94	77.0	
08/31	66	96	81.0	62	99	80.5	62	98	80.0	63	99	81.0	63	99	81.0	63	97	80.0	62	95	78.5	62	95	78.5	61	90	75.5	60	88	74.0	62	91	76.5	59	92	75.5	

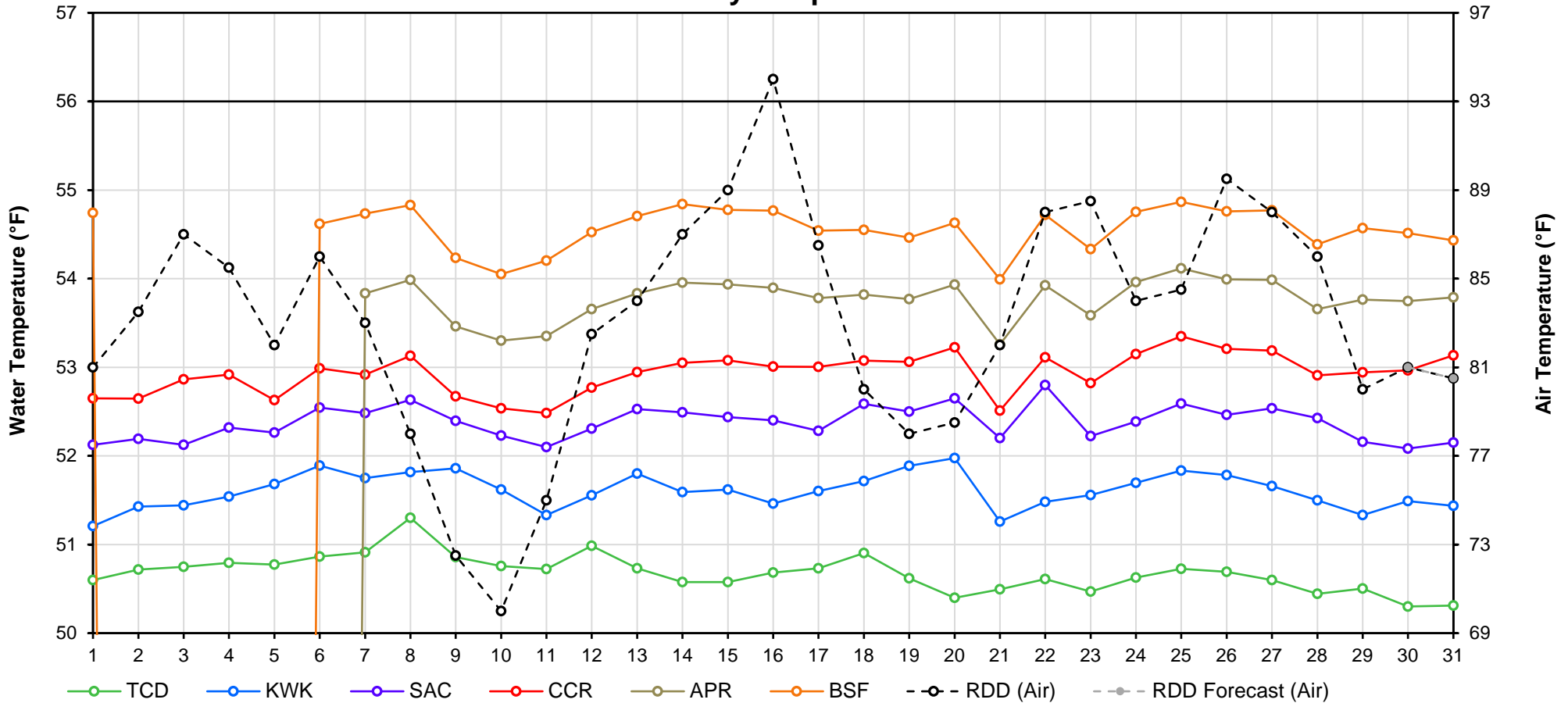
Web Links

- [10-Day Min/Max Forecast](#)
- [Previous Days Min/Max Actuals](#)

Legend

- NR = Forecasted temperatures not recorded
- 100** = Previous day actual temperatures in red and bolded indicate a record temperature for that date

Mean Daily Temperatures



Station Details			
Code	Body of Water	Location ¹	CDEC Link
TCD	N/A	Shasta Power Plant	N/A
SHD	Sacramento River	0.3 miles downstream of Shasta Power Plant	Click Here
SPP	N/A	Spring Creek Power Plant	N/A
KWK	Sacramento River	0.8 miles downstream of Keswick Dam	Click Here
SAC	Sacramento River	4.8 miles downstream of Keswick Dam	Click Here
CCR	Sacramento River	9.7 miles downstream of Keswick Dam	Click Here
BSF	Sacramento River	25 miles downstream of Keswick Dam	Click Here
JLF	Sacramento River	34 miles downstream of Keswick Dam	Click Here
BND	Sacramento River	41 miles downstream of Keswick Dam	Click Here
RDB	Sacramento River	58 miles downstream of Keswick Dam	Click Here
IGO	Clear Creek	7.3 miles downstream of Whiskeytown Dam	Click Here
LWS	Trinity River	1.1 miles downstream of Lewiston Dam	Click Here
DGC ²	Trinity River	19 miles downstream of Lewiston Dam	Click Here
NFH ³	Trinity River	38 miles downstream of Lewiston Dam	Click Here

Temperature Control Point		
Point	Temp. (°F)	Begin Date
BSF	56.0	5/15/2019

Notes

¹ Distances are approximate

² DGC is only reported in September

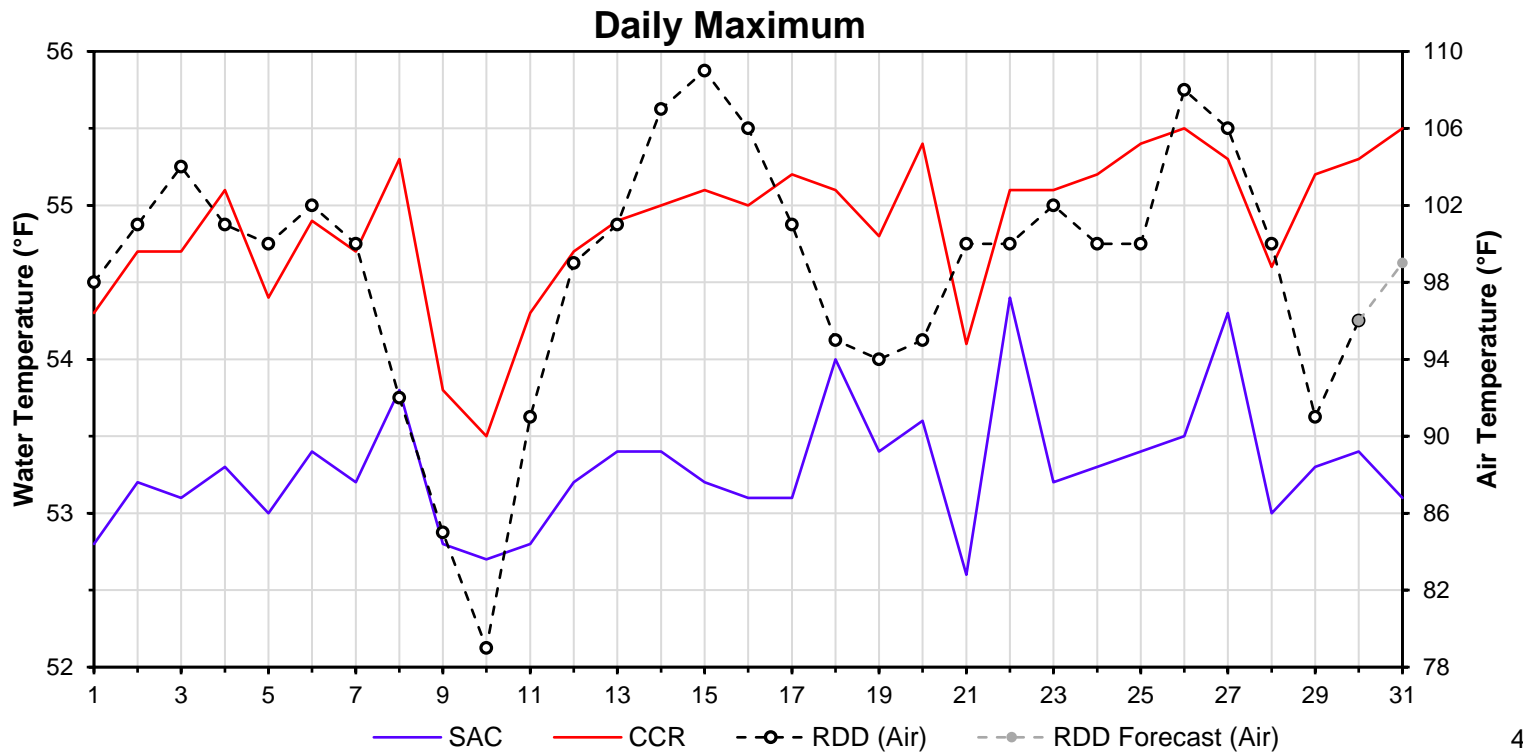
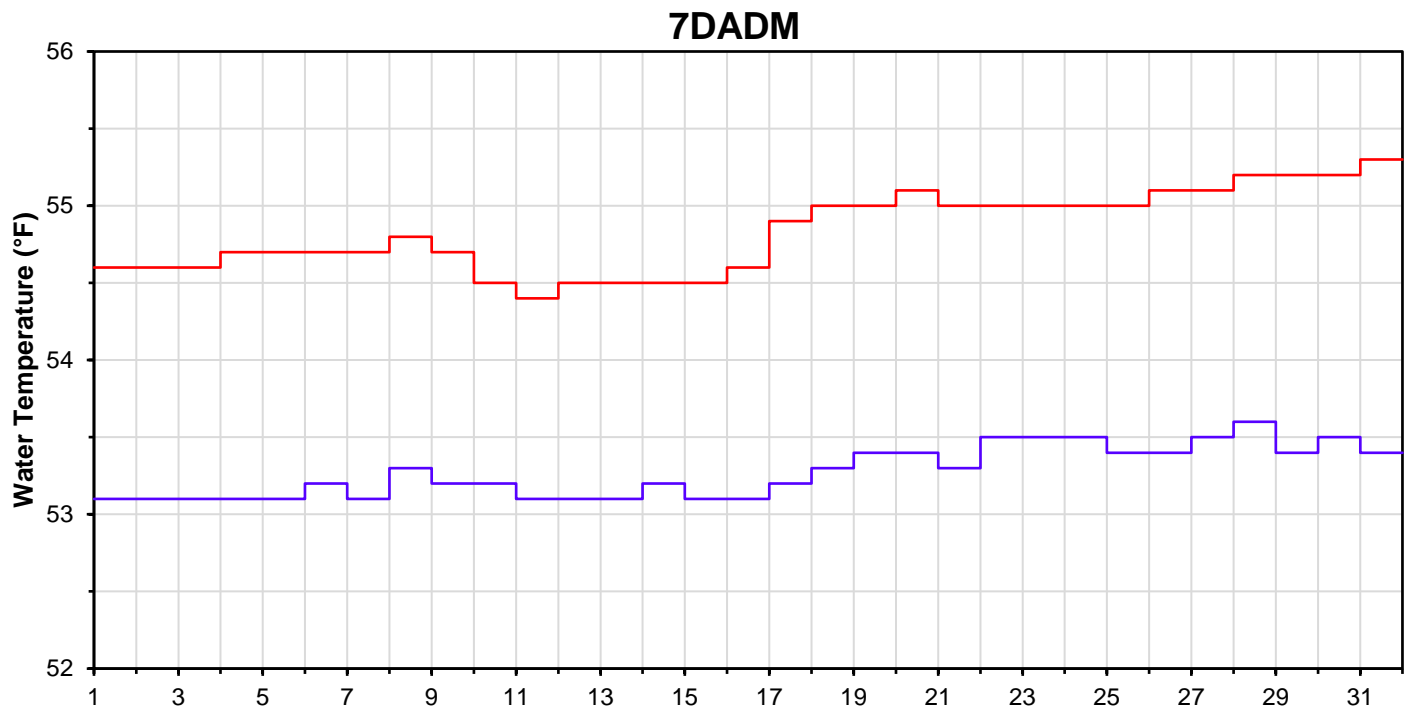
³ NFH is only reported in October, November and December

DATE	Daily Max		7DADM ¹		DAT ²
	SAC	CCR	SAC	CCR	BSF
08/01	52.8	54.3	53.1	54.6	54.7
08/02	53.2	54.7	53.1	54.6	-
08/03	53.1	54.7	53.1	54.6	-
08/04	53.3	55.1	53.1	54.7	-
08/05	53.0	54.4	53.1	54.7	-
08/06	53.4	54.9	53.2	54.7	54.6
08/07	53.2	54.7	53.1	54.7	54.7
08/08	53.8	55.3	53.3	54.8	54.8
08/09	52.8	53.8	53.2	54.7	54.2
08/10	52.7	53.5	53.2	54.5	54.1
08/11	52.8	54.3	53.1	54.4	54.2
08/12	53.2	54.7	53.1	54.5	54.5
08/13	53.4	54.9	53.1	54.5	54.7
08/14	53.4	55.0	53.2	54.5	54.8
08/15	53.2	55.1	53.1	54.5	54.8
08/16	53.1	55.0	53.1	54.6	54.8
08/17	53.1	55.2	53.2	54.9	54.5
08/18	54.0	55.1	53.3	55.0	54.6
08/19	53.4	54.8	53.4	55.0	54.5
08/20	53.6	55.4	53.4	55.1	54.6
08/21	52.6	54.1	53.3	55.0	54.0
08/22	54.4	55.1	53.5	55.0	54.7
08/23	53.2	55.1	53.5	55.0	54.3
08/24	53.3	55.2	53.5	55.0	54.8
08/25	53.4	55.4	53.4	55.0	54.9
08/26	53.5	55.5	53.4	55.1	54.8
08/27	54.3	55.3	53.5	55.1	54.8
08/28	53.0	54.6	53.6	55.2	54.4
08/29	53.3	55.2	53.4	55.2	54.6
08/30	53.4	55.3	53.5	55.2	54.5
08/31	53.1	55.5	53.4	55.3	54.4

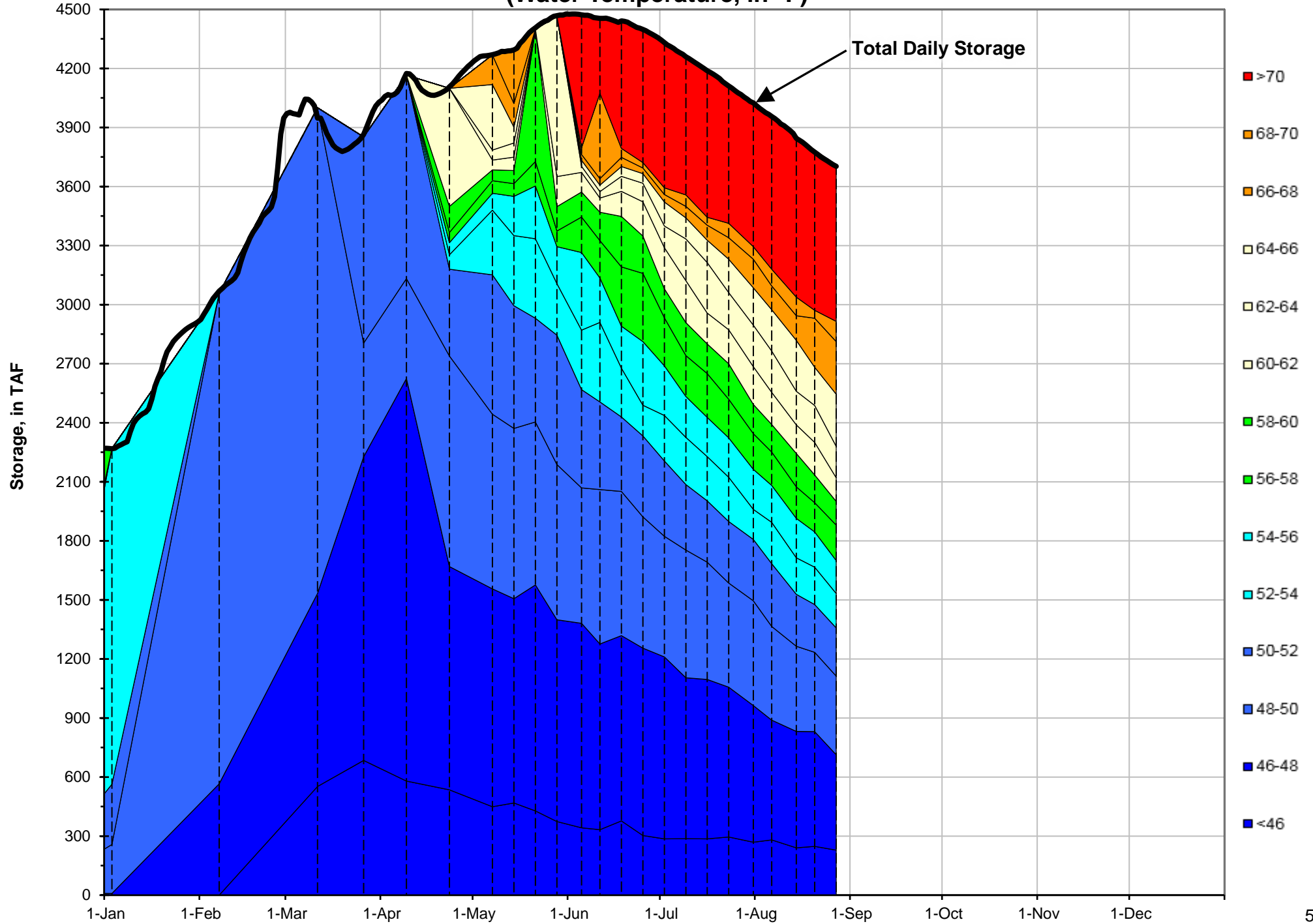
Notes

¹ 7DADM = 7-Day Average Daily Maximum

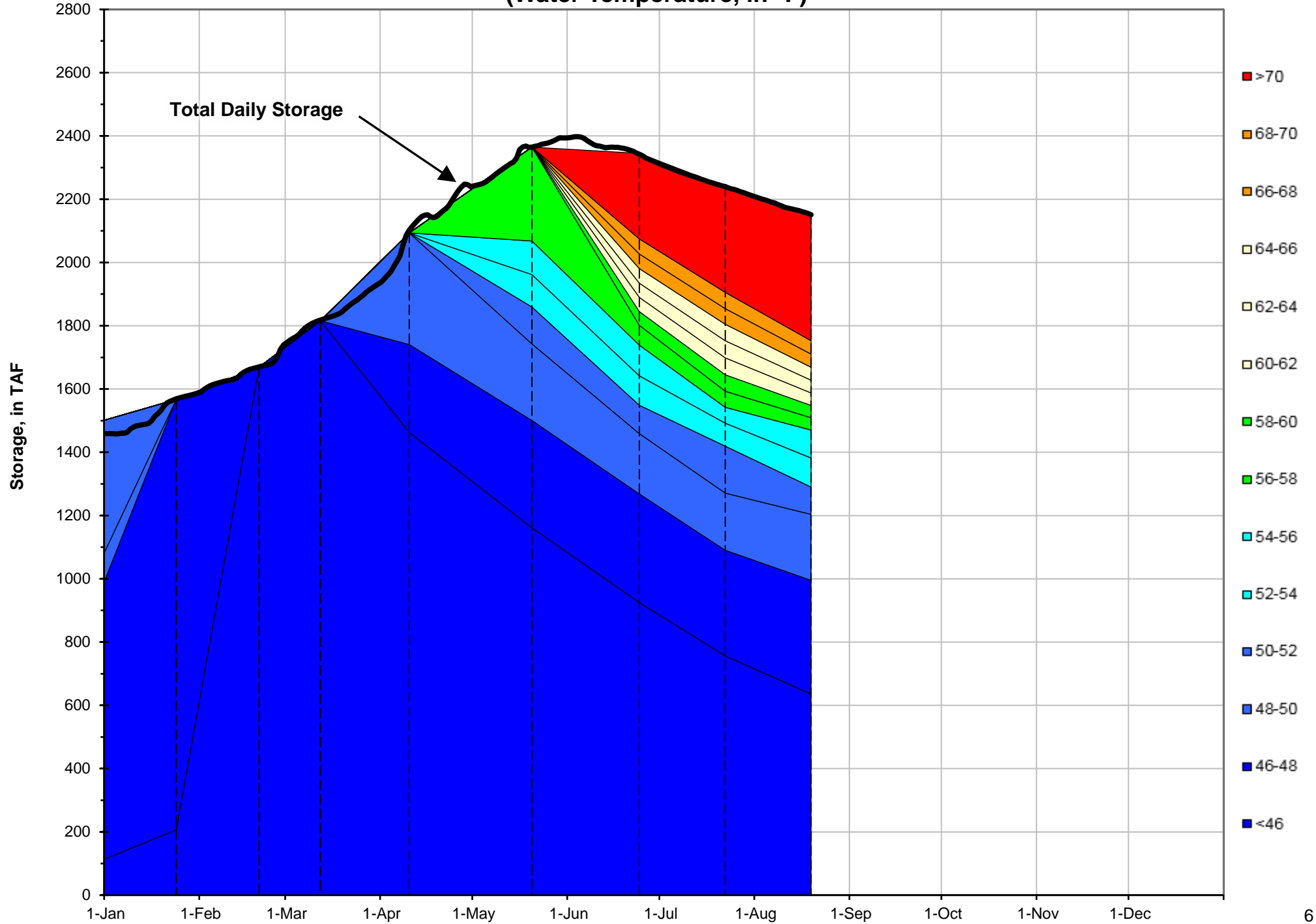
² DAT = Daily Average Temperature



Shasta Lake Isothermobaths - 2019 (Water Temperature, in °F)



Trinity Lake Isothermobaths - 2019 (Water Temperature, in °F)



Whiskeytown Lake Isothermobaths - 2019 (Water Temperature, in °F)

