

Northern CVP Water Temperature Report

August - 2016

Page	Description
1	- Mean Daily Water Temperature, Release Flow Rates and Air Temperatures with Monthly Averages
2	- Redding 10-Day Forecasted Air Temperatures
3	- Sacramento River Mean Daily Water Temperature, Air Temperature and 10-Day Forecasted Air Temperature Plot - Water Temperature Measuring Station Details - Temperature Control Point Details
4	- Lake Shasta Isothermalbaths Plot
5	- Daily Maximum and 7DADM
x	- TCD Configuration (External Link)



All Data in this Report is Preliminary and Subject to Change

DATE	Mean Daily Water Temperatures (°F)													Mean Daily Release (CFS)			Mean Daily Air Temperatures (°F)			
	TCD ¹	SHD	SPP ¹	KWK	SAC	CCR	BSF ²	JLF	BND	RDB	IGO	LWS	----- ³	Shasta Generation	Spring Creek P.P.	Keswick Total	RDD	BSF	RDB	LWS
Jul	50.6	49.8	54.7	51.6	52.2	52.8	54.7	56.2	56.9	58.9	59.0	50.9	-	8681	1039	9937	82.7	78.1	78.2	72.5
08/01	50.9	50.2	56.1	52.0	52.6	53.1	54.8	56.2	56.9	58.8	58.4	54.0	-	9008	1019	10189	82.5	77.3	77.1	75.9
08/02	51.0	50.2	56.2	52.1	52.6	53.1	54.7	56.1	56.7	58.7	58.3	53.8	-	8975	944	10190	82.0	76.9	77.7	73.1
08/03	51.0	50.3	56.2	52.1	52.6	53.2	54.7	56.2	56.8	58.7	58.4	53.8	-	9065	790	10193	84.0	81.5	81.9	73.8
08/04	51.1	50.3	56.3	52.0	52.5	53.1	54.7	56.2	56.9	58.8	58.2	54.1	-	8937	767	10187	82.5	77.6	76.8	74.3
08/05	51.3	50.6	56.4	52.0	52.5	53.0	54.7	56.1	56.7	58.6	58.2	53.9	-	9250	709	10189	77.5	72.3	70.5	72.5
08/06	51.2	50.6	56.4	52.2	52.7	53.2	54.8	56.0	56.6	58.3	58.1	54.2	-	9070	712	10190	78.0	73.5	74.0	70.8
08/07	51.3	50.6	56.5	52.2	52.7	53.3	55.0	56.2	56.8	58.6	58.1	54.2	-	8876	943	10156	78.5	74.6	75.3	68.6
08/08	51.5	50.6	56.5	52.2	52.8	53.3	55.0	56.2	56.8	58.5	58.2	54.5	-	9138	789	10071	79.0	75.0	75.3	69.0
08/09	51.4	50.6	56.6	52.6	53.1	53.7	55.4	56.6	57.1	58.9	58.4	54.9	-	9175	814	10083	85.5	77.6	78.4	70.2
08/10	51.0	50.2	56.6	52.3	52.9	53.4	55.3	56.5	57.1	59.0	58.4	55.2	-	9158	740	9963	81.5	76.2	76.3	72.5
08/11	51.4	50.4	56.7	52.0	52.6	53.2	55.0	56.3	56.9	58.8	58.4	55.4	-	8818	634	10048	85.0	78.7	78.0	74.8
08/12	51.2	50.4	56.6	52.3	52.8	53.3	55.0	56.3	56.9	58.8	58.7	55.4	-	9132	676	10187	85.0	79.0	79.0	76.2
08/13	50.9	50.2	56.8	52.1	52.7	53.4	55.2	56.4	57.0	58.8	58.6	55.5	-	9505	792	10188	85.5	79.3	79.7	76.5
08/14	51.0	50.1	56.9	52.0	52.6	53.1	54.9	56.2	56.8	58.7	58.5	55.6	-	8892	878	10159	84.0	78.5	80.1	75.2
08/15	51.1	50.2	56.9	52.1	52.6	53.2	54.8	56.1	56.6	58.5	58.6	56.0	-	8472	941	10074	86.5	79.5	80.6	76.2
08/16	51.4	50.4	57.0	52.1	52.7	53.3	55.1	56.3	56.8	58.6	58.5	55.9	-	9157	790	10137	86.5	79.8	79.3	77.2
08/17	50.8	50.0	56.9	52.3	52.9	53.4	55.3	56.5	57.1	59.0	59.0	56.4	-	9084	789	10159	↑ 87.5	80.3	80.9	79.8
08/18	50.9	50.0	56.8	52.2	52.9	53.5	55.3	56.7	57.3	59.3	59.1	56.6	-	8942	1100	10188	88.5	80.8	82.5	80.5
08/19	50.5	49.6	56.9	52.0	52.6	53.2	55.1	56.5	57.1	59.0	59.0	56.5	-	9026	791	10187	86.0	79.7	79.4	79.5
08/20	50.5	49.6	57.0	51.6	52.3	52.9	54.7	56.0	56.7	58.5	58.9	56.8	-	8560	1104	10137	86.0	79.5	78.9	79.6
08/21	50.4	49.5	57.0	51.6	52.1	52.8	54.5	55.7	56.3	58.1	58.9	56.7	-	9050	894	10138	84.0	78.0	77.4	77.7
08/22	50.6	49.6	57.1	51.6	52.1	52.7	54.4	55.7	56.2	58.0	58.8	56.5	-	8699	1074	10170	82.5	77.9	77.2	76.8
08/23	50.5	49.6	57.1	51.9	52.4	52.9	54.5	55.7	56.2	57.9	58.6	56.2	-	8367	1407	10140	79.0	75.1	74.2	72.4
08/24	50.6	49.7	57.2	51.8	52.4	53.0	54.6	55.8	56.3	58.0	58.5	56.2	-	8759	1032	10140	80.0	74.6	73.9	71.5
08/25	50.7	49.8	57.6	51.6	52.2	52.8	54.4	55.6	56.1	57.9	58.5	55.1	-	8759	1032	10140	81.5	76.7	76.5	73.1
08/26	50.8	49.9	57.2	51.3	51.9	52.5	54.1	55.3	55.9	57.6	58.3	55.0	-	9396	494	10134	79.5	73.5	72.7	72.5
08/27	50.9	50.0	57.3	51.5	52.0	52.6	54.0	55.2	55.6	57.2	58.4	54.9	-	9334	307	10141	77.0	71.2	71.2	72.2
08/28	50.9	50.0	57.4	51.4	52.0	52.6	54.0	55.1	55.6	57.2	58.3	54.7	-	9478	399	10151	78.0	72.0	72.1	71.5
08/29	51.0	50.1	57.4	51.4	51.7	52.3	53.6	54.6	55.1	56.7	57.7	!	-	9631	404	10196	77.5	71.0	72.0	68.0
08/30	50.9	50.1	57.4	51.4	51.9	52.4	53.8	54.7	55.1	56.4	58.2	#	-	9517	383	10162	78.0	72.2	72.5	-
08/31	? 51.1	50.2	57.4	51.5	? 52.0	52.6	53.9	55.0	55.4	56.9	58.2	#	-	9420	328	10135	76.5	71.8	73.0	-
Aug	51.0	50.1	56.8	51.9	52.5	53.0	54.7	55.9	56.5	58.3	58.5	55.3	-	9053	790	10146	82.1	76.5	76.6	74.2

Total CFS	280650	24476	314522
Total AF	556658	48547	623842

Legend

- ? = 1-9 hours of data missing (Average includes estimations)
- ! = 10 or more hours of data missing (Average not calculated)
- # = Station out of service
- ↑ = Record high air temperature
- ↓ = Record low air temperature
- = Monthly Averages

Notes

- ¹ Temperatures are weighted averages based on individual penstock flow and temperature
- Highlighted cells in the TCD column indicate a TCD change was made on that day
- ² Current control point (see page 3 for more details)
- ³ Column not used this month

D A T E	Redding (RDD) Daily Air Temperatures (°F)																																			
	Actual			Forecasted																																
	Previous Day			Current Day			1 Day			2 Days			3 Days			4 Days			5 Days			6 Days			7 Days			8 Days			9 Days			10 Days		
	↓	↑	Avg	↓	↑	Avg	↓	↑	Avg	↓	↑	Avg	↓	↑	Avg	↓	↑	Avg	↓	↑	Avg	↓	↑	Avg	↓	↑	Avg	↓	↑	Avg	↓	↑	Avg	↓	↑	Avg
08/01	63	99	81.0	64	101	82.5	64	101	82.5	65	103	84.0	64	98	81.0	63	94	78.5	63	93	78.0	64	96	80.0	62	100	81.0	65	101	83.0	67	101	84.0	65	99	82.0
08/02	64	101	82.5	64	101	82.5	64	103	83.5	63	100	81.5	62	94	78.0	62	94	78.0	64	96	80.0	64	98	81.0	69	100	84.5	66	99	82.5	65	101	83.0	64	98	81.0
08/03	63	101	82.0	64	104	84.0	63	100	81.5	62	94	78.0	63	95	79.0	62	96	79.0	65	98	81.5	65	97	81.0	67	100	83.5	65	97	81.0	64	98	81.0	63	94	78.5
08/04	63	105	84.0	68	100	84.0	62	94	78.0	63	95	79.0	62	95	78.5	62	96	79.0	63	97	80.0	63	96	79.5	64	97	80.5	65	97	81.0	64	97	80.5	64	97	80.5
08/05	67	98	82.5	62	93	77.5	62	95	78.5	62	95	78.5	62	96	79.0	63	95	79.0	63	94	78.5	62	97	79.5	64	97	80.5	65	97	81.0	64	99	81.5	64	97	80.5
08/06	62	93	77.5	62	95	78.5	61	95	78.0	62	95	78.5	63	97	80.0	63	95	79.0	62	97	79.5	63	98	80.5	64	97	80.5	64	97	80.5	65	100	82.5	64	95	79.5
08/07	62	94	78.0	63	95	79.0	62	96	79.0	63	97	80.0	63	97	80.0	62	99	80.5	63	100	81.5	63	97	80.0	62	93	77.5	61	92	76.5	63	94	78.5	64	97	80.5
08/08	62	95	78.5	64	95	79.5	63	97	80.0	63	98	80.5	63	102	82.5	62	101	81.5	62	99	80.5	61	95	78.0	64	98	81.0	63	98	80.5	63	100	81.5	64	98	81.0
08/09	62	96	79.0	74	98	86.0	62	98	80.0	63	102	82.5	63	103	83.0	63	104	83.5	63	100	81.5	63	100	81.5	64	104	84.0	65	102	83.5	65	100	82.5	63	99	81.0
08/10	73	98	85.5	66	98	82.0	64	103	83.5	64	104	84.0	64	105	84.5	64	101	82.5	63	102	82.5	62	103	82.5	64	102	83.0	65	100	82.5	64	98	81.0	63	97	80.0
08/11	65	98	81.5	69	103	86.0	64	104	84.0	65	104	84.5	63	100	81.5	63	102	82.5	62	104	83.0	63	104	83.5	64	103	83.5	66	103	84.5	66	100	83.0	65	97	81.0
08/12	66	104	85.0	69	104	86.5	65	105	85.0	64	101	82.5	63	105	84.0	64	105	84.5	64	106	85.0	67	104	85.5	67	103	85.0	63	101	82.0	65	100	82.5	65	98	81.5
08/13	68	102	85.0	68	105	86.5	64	102	83.0	63	102	82.5	64	106	85.0	65	106	85.5	66	104	85.0	64	100	82.0	66	97	81.5	65	97	81.0	63	96	79.5	62	93	77.5
08/14	67	104	85.5	68	102	85.0	62	102	82.0	64	106	85.0	65	105	85.0	65	104	84.5	65	103	84.0	64	101	82.5	68	100	84.0	66	103	84.5	66	98	82.0	65	98	81.5
08/15	66	102	84.0	67	104	85.5	64	107	85.5	65	106	85.5	65	106	85.5	64	101	82.5	63	97	80.0	62	96	79.0	62	99	80.5	63	100	81.5	64	98	81.0	63	99	81.0
08/16	67	106	86.5	67	107	87.0	65	108	86.5	65	105	85.0	65	104	84.5	63	99	81.0	62	98	80.0	61	100	80.5	62	103	82.5	64	101	82.5	62	99	80.5	63	97	80.0
08/17	66	107	86.5	70	107	88.5	65	106	85.5	65	105	85.0	64	104	84.0	63	99	81.0	62	100	81.0	62	99	80.5	64	99	81.5	62	98	80.0	61	99	80.0	63	98	80.5
08/18	67	108	87.5	70	107	88.5	64	107	85.5	64	105	84.5	63	102	82.5	62	99	80.5	62	99	80.5	61	101	81.0	62	101	81.5	63	98	80.5	62	97	79.5	62	96	79.0
08/19	69	108	88.5	70	107	88.5	64	105	84.5	64	103	83.5	62	100	81.0	62	99	80.5	61	101	81.0	61	102	81.5	64	99	81.5	64	98	81.0	60	99	79.5	63	98	80.5
08/20	70	102	86.0	69	103	86.0	63	102	82.5	62	99	80.5	61	97	79.0	61	101	81.0	61	102	81.5	61	99	80.0	64	96	80.0	63	96	79.5	62	97	79.5	62	96	79.0
08/21	69	103	86.0	68	100	84.0	61	98	79.5	61	97	79.0	62	99	80.5	60	99	79.5	59	98	78.5	58	95	76.5	62	89	75.5	60	91	75.5	59	93	76.0	60	93	76.5
08/22	68	100	84.0	66	98	82.0	61	97	79.0	61	99	80.0	61	98	79.5	60	99	79.5	58	94	76.0	57	92	74.5	58	92	75.0	58	96	77.0	60	93	76.5	61	96	78.5
08/23	66	99	82.5	63	95	79.0	61	97	79.0	61	99	80.0	60	96	78.0	58	93	75.5	56	93	74.5	56	92	74.0	57	85	71.0	59	88	73.5	58	92	75.0	60	95	77.5
08/24	63	95	79.0	64	98	81.0	61	99	80.0	60	98	79.0	59	96	77.5	57	94	75.5	56	95	75.5	58	96	77.0	60	99	79.5	59	95	77.0	62	94	78.0	62	91	76.5
08/25	63	97	80.0	62	98	80.0	59	96	77.5	58	95	76.5	59	95	77.0	58	94	76.0	56	93	74.5	57	93	75.0	57	89	73.0	59	90	74.5	60	92	76.0	59	94	76.5
08/26	61	102	81.5	62	98	80.0	59	96	77.5	58	96	77.0	57	95	76.0	57	90	73.5	55	87	71.0	52	84	68.0	58	81	69.5	57	84	70.5	59	87	73.0	59	93	76.0
08/27	61	98	79.5	60	95	77.5	58	96	77.0	58	94	76.0	58	89	73.5	54	89	71.5	55	88	71.5	53	87	70.0	62	89	75.5	60	93	76.5	59	92	75.5	59	94	76.5
08/28	60	94	77.0	62	95	78.5	57	95	76.0	59	91	75.0	55	91	73.0	58	92	75.0	58	93	75.5	58	94	76.0	60	91	75.5	60	76	68.0	62	86	74.0	57	88	72.5
08/29	61	95	78.0	62	95	78.5	60	91	75.5	56	91	73.5	56	92	74.0	57	91	74.0	58	93	75.5	59	96	77.5	62	96	79.0	61	90	75.5	62	93	77.5	59	95	77.0
08/30	62	93	77.5	64	92	78.0	56	92	74.0	56	91	73.5	55	89	72.0	52	90	71.0	58	93	75.5	60	97	78.5	58	95	76.5	63	95	79.0	61	94	77.5	60	94	77.0
08/31	63	93	78.0	61	93	77.0	57	92	74.5	56	89	72.5	54	91	72.5	54	89	71.5	57	93	75.0	57	96	76.5	60	92	76.0	62	96	79.0	61	95	78.0	61	95	78.0

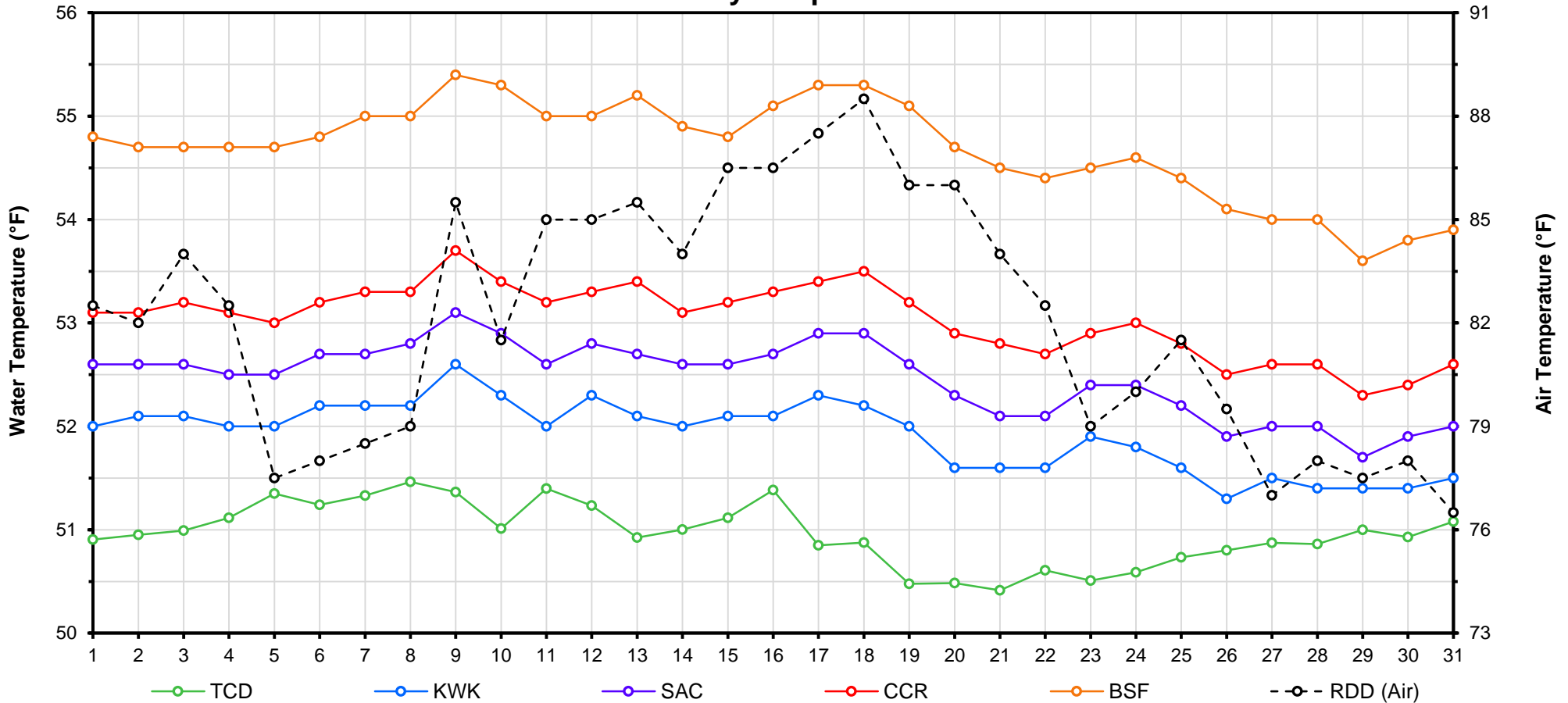
Web Links

- [10-Day Min/Max Forecast](#)
- [Previous Days Min/Max Actuals](#)

Legend

- NR = Forecasted temperatures not recorded
- 100** = Previous day actual temperatures in red and bolded indicate a record temperature for that date

Mean Daily Temperatures



Station Details			
Code	Body of Water	Location ¹	CDEC Link
TCD	N/A	Shasta Power Plant	N/A
SHD	Sacramento River	0.3 miles downstream of Shasta Power Plant	Click Here
SPP	N/A	Spring Creek Power Plant	N/A
KWK	Sacramento River	0.8 miles downstream of Keswick Dam	Click Here
SAC	Sacramento River	4.8 miles downstream of Keswick Dam	Click Here
CCR	Sacramento River	9.7 miles downstream of Keswick Dam	Click Here
BSF	Sacramento River	25 miles downstream of Keswick Dam	Click Here
JLF	Sacramento River	34 miles downstream of Keswick Dam	Click Here
BND	Sacramento River	41 miles downstream of Keswick Dam	Click Here
RDB	Sacramento River	58 miles downstream of Keswick Dam	Click Here
IGO	Clear Creek	7.3 miles downstream of Whiskeytown Dam	Click Here
LWS	Trinity River	1.1 miles downstream of Lewiston Dam	Click Here
DGC ²	Trinity River	19 miles downstream of Lewiston Dam	Click Here
NFH ³	Trinity River	38 miles downstream of Lewiston Dam	Click Here

Temperature Control Point		
Point	Temp. (°F)	Date Range
BSF	56.0	6/17 - Current

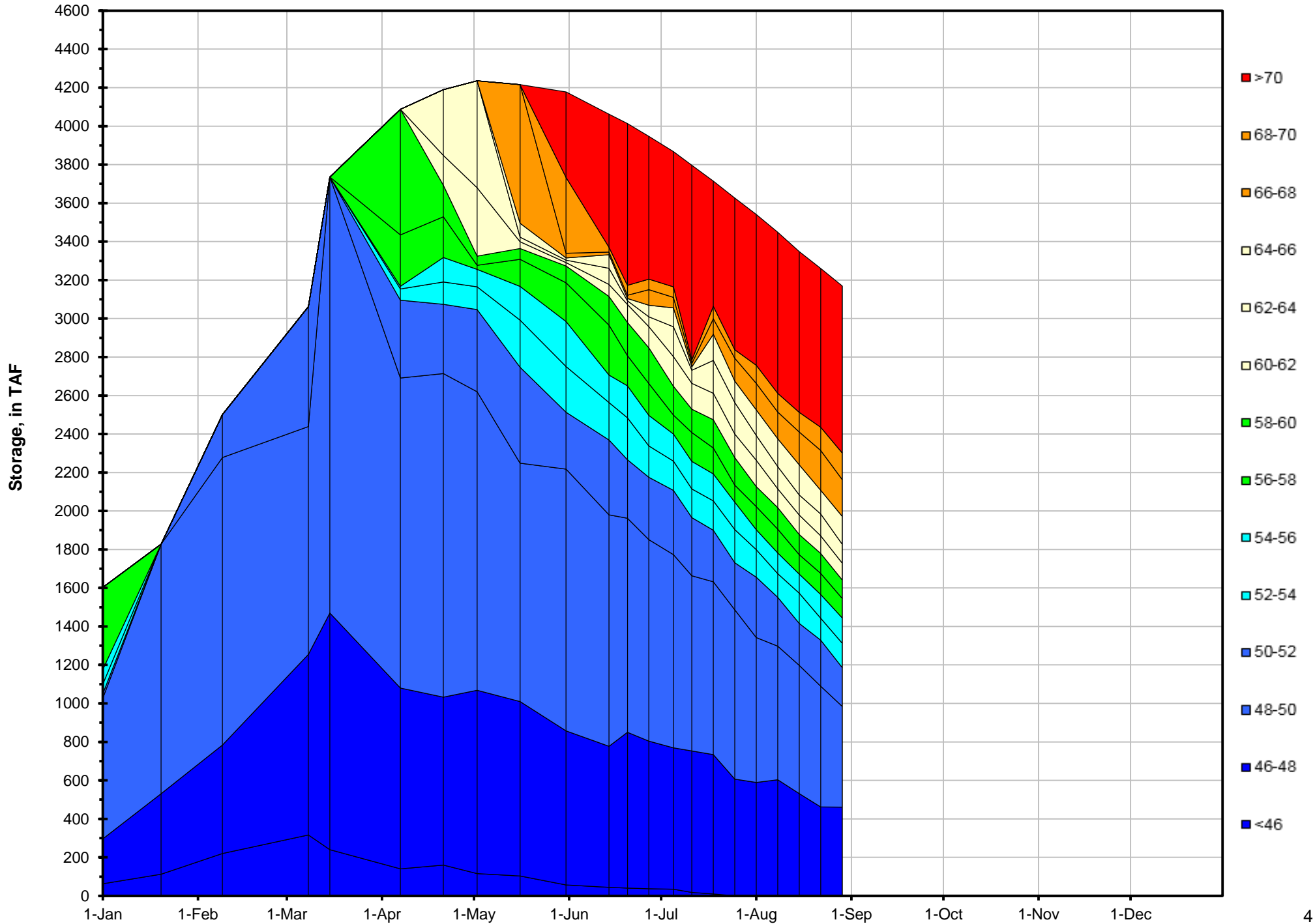
Notes

¹ Distances are approximate

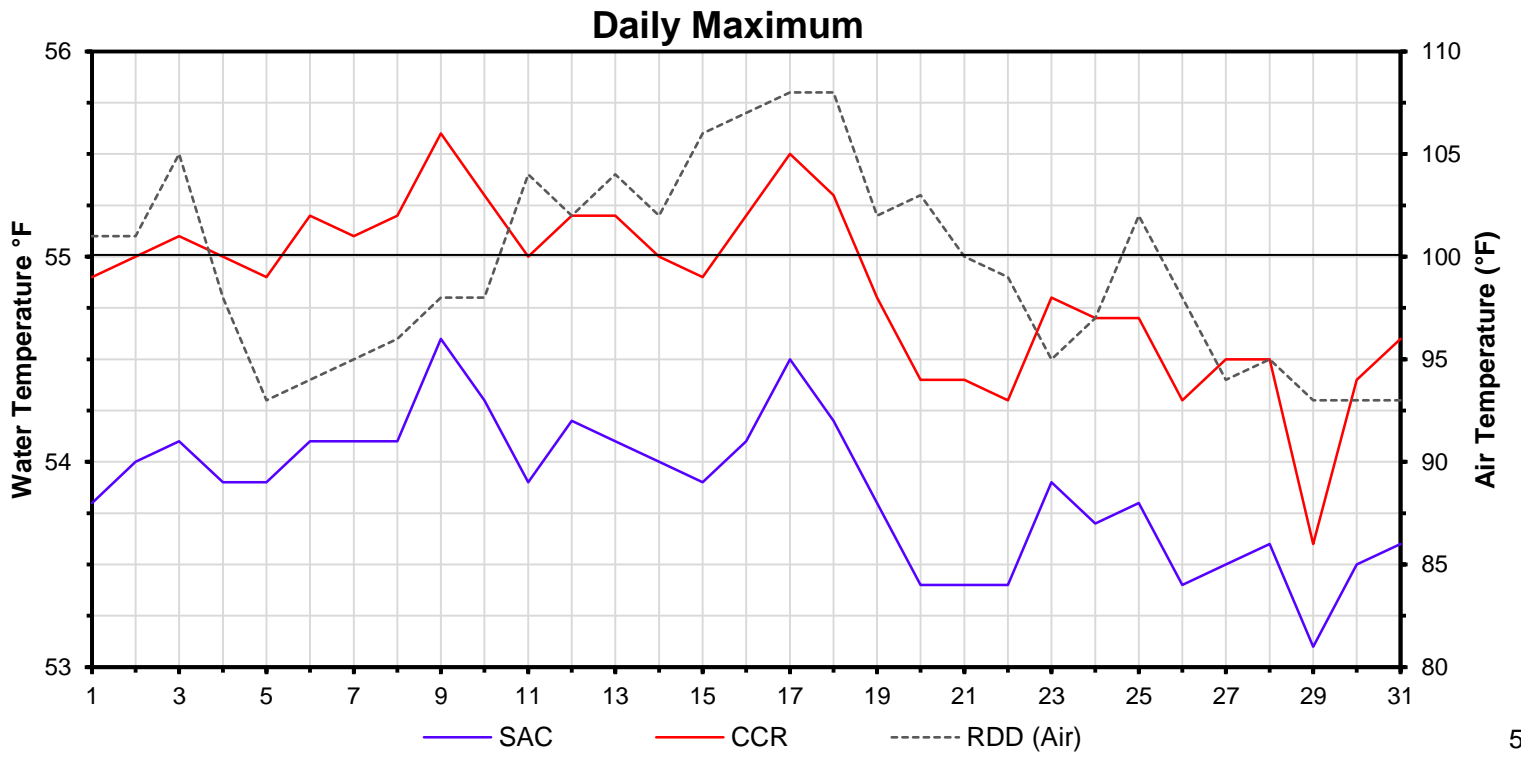
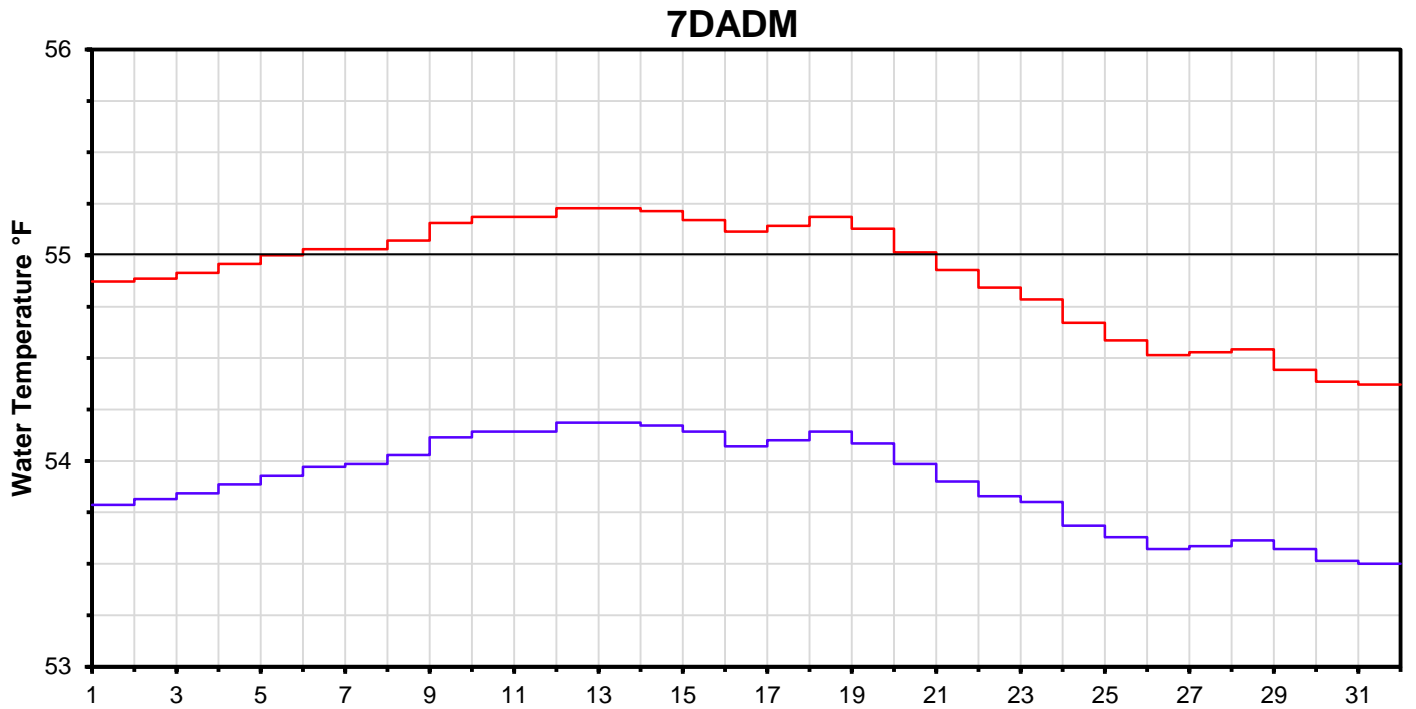
² DGC is only reported in September

³ NFH is only reported in October, November and December

Lake Shasta Isothermalbaths - 2016 (Water Temperature, in °F)



DATE	Daily Max		7DADM ¹		DAT ²
	SAC	CCR	SAC	CCR	BSF
08/01	53.8	54.9	53.8	54.9	54.8
08/02	54.0	55.0	53.8	54.9	54.7
08/03	54.1	55.1	53.8	54.9	54.7
08/04	53.9	55.0	53.9	55.0	54.7
08/05	53.9	54.9	53.9	55.0	54.7
08/06	54.1	55.2	54.0	55.0	54.8
08/07	54.1	55.1	54.0	55.0	55.0
08/08	54.1	55.2	54.0	55.1	55.0
08/09	54.6	55.6	54.1	55.2	55.4
08/10	54.3	55.3	54.1	55.2	55.3
08/11	53.9	55.0	54.1	55.2	55.0
08/12	54.2	55.2	54.2	55.2	55.0
08/13	54.1	55.2	54.2	55.2	55.2
08/14	54.0	55.0	54.2	55.2	54.9
08/15	53.9	54.9	54.1	55.2	54.8
08/16	54.1	55.2	54.1	55.1	55.1
08/17	54.5	55.5	54.1	55.1	55.3
08/18	54.2	55.3	54.1	55.2	55.3
08/19	53.8	54.8	54.1	55.1	55.1
08/20	53.4	54.4	54.0	55.0	54.7
08/21	53.4	54.4	53.9	54.9	54.5
08/22	53.4	54.3	53.8	54.8	54.4
08/23	53.9	54.8	53.8	54.8	54.5
08/24	53.7	54.7	53.7	54.7	54.6
08/25	53.8	54.7	53.6	54.6	54.4
08/26	53.4	54.3	53.6	54.5	54.1
08/27	53.5	54.5	53.6	54.5	54.0
08/28	53.6	54.5	53.6	54.5	54.0
08/29	53.1	53.6	53.6	54.4	53.6
08/30	53.5	54.4	53.5	54.4	53.8
08/31	53.6	54.6	53.5	54.4	53.9



Notes

¹ 7DADM = 7-Day Average Daily Maximum

² DAT = Daily Average Temperature