

Northern CVP Water Temperature Report

July - 2020

| Page | Description |
|------|---|
| 1 | - Mean Daily Water Temperature, Release Flow Rates and Air Temperatures with Monthly Averages |
| 2 | - Redding 10-Day Forecasted Air Temperatures |
| 3 | - Sacramento River Mean Daily Water Temperature, Air Temperature and 10-Day Forecasted Air Temperature Plot - Water Temperature Measuring Station Details - Temperature Control Point Details |
| 4 | - Shasta Lake Isothermobaths Plot |
| 5 | - Trinity Lake Isothermobaths Plot |
| 6 | - Whiskeytown Lake Isothermobaths Plot |
| x | - TCD Configuration (External Link) |



— BUREAU OF —
RECLAMATION

All Data in this Report is Preliminary and Subject to Change

| DATE | Mean Daily Water Temperatures (°F) | | | | | | | | | | | | | Mean Daily Release (CFS) | | | Mean Daily Air Temperatures (°F) | | | |
|-------|------------------------------------|------|------------------|------|------|------|------------------|------|------|--------|--------|------|-------|--------------------------|-------------------|---------------|----------------------------------|------|------|-----|
| | TCD ¹ | SHD | SPP ¹ | KWK | SAC | CCR | BSF ² | JLF | BND | RDB | IGO | LWS | ----- | Shasta Generation | Spring Creek P.P. | Keswick Total | RDD | BSF | RDB | LWS |
| Jun | 51.3 | 50.5 | 52.8 | 51.9 | 52.4 | 53.1 | 54.8 | 56.1 | 56.9 | 57.9 | 56.4 | 51.5 | - | 9680 | 1497 | 11443 | 78.3 | 75.1 | 76.0 | - |
| 07/01 | 51.8 | 51.1 | 53.9 | 52.3 | 52.6 | 53.3 | 54.7 | 55.9 | 56.7 | 57.6 | 57.8 | 53.5 | - | 10503 | 1528 | 12478 | 80.0 | 77.1 | 77.3 | - |
| 07/02 | 51.7 | 51.1 | 54.0 | 52.6 | 52.9 | 53.6 | 55.0 | 56.2 | 57.0 | 57.9 | 57.8 | 54.0 | - | 10416 | 1387 | 12434 | 83.5 | 76.4 | 77.1 | - |
| 07/03 | 51.9 | 51.2 | 54.0 | 52.6 | 53.0 | 53.6 | 55.1 | 56.3 | 57.1 | 58.1 | 57.8 | 54.2 | - | 10356 | 1583 | 12458 | 77.0 | 73.8 | 73.8 | - |
| 07/04 | 52.0 | 51.5 | 54.1 | 52.7 | 53.0 | 53.7 | 55.1 | 56.2 | 57.0 | 58.0 | 57.8 | 54.4 | - | 10719 | 1372 | 12462 | 81.0 | 77.6 | 77.5 | - |
| 07/05 | 52.1 | 51.4 | 54.1 | 52.9 | 53.3 | 53.9 | 55.3 | 56.5 | 57.2 | 58.1 | 57.9 | 54.3 | - | 10691 | 1581 | 12446 | 81.0 | 78.3 | 80.3 | - |
| 07/06 | 51.7 | 51.1 | 54.2 | 52.9 | 53.3 | 53.9 | 55.4 | 56.6 | 57.3 | 58.3 | 58.0 | 53.7 | - | 9934 | 1646 | 12407 | 79.5 | 75.3 | 78.7 | - |
| 07/07 | 51.9 | 51.1 | 54.3 | 52.6 | 53.0 | 53.6 | 55.2 | 56.4 | 57.2 | 58.2 | 57.7 | 53.6 | - | 11412 | 1358 | 12361 | 78.0 | 75.6 | 76.0 | - |
| 07/08 | 52.0 | 51.2 | 54.4 | 52.7 | 53.0 | 53.6 | 55.1 | 56.3 | 57.1 | 58.1 | 58.4 | 53.5 | - | 10658 | 1111 | 12372 | 85.5 | 79.3 | 79.3 | - |
| 07/09 | 52.0 | 51.2 | 54.4 | 52.9 | 53.2 | 53.6 | 55.3 | 56.5 | 57.3 | 58.3 | 58.4 | 53.7 | - | 10630 | 1586 | 12313 | 82.5 | 79.6 | 80.0 | - |
| 07/10 | 52.2 | 51.4 | 54.5 | 52.9 | 53.3 | 53.8 | 55.4 | 56.6 | 57.4 | 58.5 | 58.5 | 53.8 | - | 10504 | 1624 | 12388 | 84.5 | 79.5 | 81.2 | - |
| 07/11 | 52.1 | 51.3 | 54.7 | 53.1 | 53.5 | 54.1 | 55.7 | 56.8 | 57.6 | 58.6 | 58.6 | 53.8 | - | 10458 | 1669 | 12330 | 85.0 | 80.2 | 81.4 | - |
| 07/12 | 51.9 | 51.0 | 54.7 | 53.1 | 53.5 | 54.0 | 55.7 | 56.9 | 57.8 | 58.8 | 58.5 | 53.2 | - | 9872 | 1736 | 12359 | 84.5 | 80.6 | 82.5 | - |
| 07/13 | 52.2 | 51.3 | 54.8 | 52.9 | 53.4 | 53.9 | 55.6 | 56.9 | 57.7 | 58.8 | 59.1 | 53.3 | - | 10979 | 1483 | 12356 | 85.5 | 80.3 | 81.0 | - |
| 07/14 | 52.4 | 51.4 | 54.8 | 53.1 | 53.5 | 54.0 | 55.6 | 56.9 | 57.7 | 58.8 | 58.6 | 53.7 | - | 10395 | 1466 | 12419 | 86.0 | 81.4 | 80.0 | - |
| 07/15 | 52.5 | 51.6 | 54.9 | 53.2 | 53.6 | 54.2 | 55.9 | 57.1 | 58.0 | 59.1 | 58.8 | 53.7 | - | 10712 | 1245 | 12393 | 90.0 | 84.3 | 83.0 | - |
| 07/16 | 52.0 | 51.2 | 55.0 | 53.3 | 53.7 | 54.4 | 56.1 | 57.4 | 58.3 | 59.4 | 59.1 | 53.6 | - | 11064 | 1046 | 12365 | 86.0 | 81.0 | 79.8 | - |
| 07/17 | 51.9 | 50.8 | 55.0 | 53.0 | 53.5 | 54.1 | 55.9 | 57.3 | 58.2 | 59.4 | 59.2 | 53.9 | - | 10863 | 1419 | 12381 | 85.5 | 80.5 | 79.8 | - |
| 07/18 | 52.0 | 51.0 | 55.1 | 52.9 | 53.3 | 53.7 | 55.5 | 56.7 | 57.7 | 59.0 | 58.9 | 54.1 | - | 10383 | 1461 | 12404 | 86.0 | 81.7 | 81.2 | - |
| 07/19 | 51.9 | 50.9 | 55.2 | 53.0 | 53.4 | 54.0 | 55.6 | 56.7 | 57.6 | 58.6 | 59.0 | 53.9 | - | 10482 | 1798 | 12415 | 88.5 | 83.5 | 83.6 | - |
| 07/20 | 51.9 | 50.9 | 55.2 | 53.0 | 53.4 | 54.0 | 55.8 | 57.0 | 57.9 | 59.1 | 59.3 | 53.8 | - | 10226 | 1643 | 12475 | 87.0 | 80.9 | 79.1 | - |
| 07/21 | 52.1 | 51.1 | 55.3 | 52.9 | 53.4 | 53.9 | 55.6 | 56.8 | 57.7 | 59.0 | 59.3 | 53.9 | - | 10405 | 1525 | 12461 | 85.5 | 79.6 | 78.4 | - |
| 07/22 | 52.1 | 50.9 | 55.4 | 53.1 | 53.4 | 53.8 | 55.4 | 56.5 | 57.4 | 58.5 | 58.7 ? | 52.2 | - | 10401 | 1579 | 12003 | 81.5 | 77.3 | 76.4 | - |
| 07/23 | 51.6 | 50.8 | 55.5 | 53.0 | 53.3 | 53.8 | 55.4 | 56.4 | 57.3 | 58.2 | 58.7 | 51.8 | - | 9998 | 1592 | 11735 | 82.0 | 77.6 | 76.7 | - |
| 07/24 | 51.7 | 50.5 | 55.5 | 52.9 | 53.4 | 54.0 | 55.8 | 57.0 | 57.8 | 58.8 | 58.8 | 51.4 | - | 9254 | 1624 | 11459 | 84.0 | 79.2 | 78.5 | - |
| 07/25 | 51.7 | 50.6 | 55.6 | 52.9 | 53.3 | 53.8 | 55.6 | 56.8 | 57.8 | 58.9 | 59.0 | 51.3 | - | 9778 | 1607 | 11468 | 84.0 | 80.2 | 80.3 | - |
| 07/26 | 51.8 | 50.6 | 55.7 | 52.9 | 53.3 | 53.8 | 55.5 | 56.8 | 57.7 | 58.9 | 59.1 | 51.7 | - | 9251 | 1569 | 11462 | 87.0 | 81.7 | 81.9 | - |
| 07/27 | 52.0 | 50.8 | 55.8 | 53.0 | 53.4 | 54.0 | 55.8 | 57.0 | 57.9 | 59.0 | 59.2 | 51.4 | - | 9886 | 1357 | 11465 | 87.5 | 82.9 | 82.1 | - |
| 07/28 | 51.8 | 50.7 | 55.9 | 53.1 | 53.5 | 54.1 | 55.9 | 57.1 | 58.0 | 59.2 | 59.3 | 51.5 | - | 9743 | 1095 | 11236 | 88.0 | 83.5 | 82.6 | - |
| 07/29 | 51.3 | 50.2 | 55.9 | 53.1 | 53.6 | 54.2 | 56.0 | 57.3 | 58.2 | 59.3 ! | - | 51.2 | - | 8734 | 1574 | 10994 | 86.0 | 80.4 | 81.0 | - |
| 07/30 | 51.3 | 50.2 | 56.0 | 52.6 | 53.2 | 53.7 | 55.6 | 56.9 | 57.8 | 59.1 # | - | 51.3 | - | 8928 | 1657 | 10976 | 82.5 | 77.1 | 77.6 | - |
| 07/31 | 51.4 | 50.2 | 56.1 | 52.5 | 53.1 | 53.7 | 55.4 | 56.6 | 57.5 | 58.7 # | - | 51.3 | - | 8934 | 1606 | 11006 | 82.5 | 77.6 | 78.3 | - |
| Jul | 51.9 | 51.0 | 55.0 | 52.9 | 53.3 | 53.9 | 55.5 | 56.7 | 57.6 | 58.6 | 58.6 | 53.0 | - | 10212 | 1501 | 12074 | 84.1 | 79.5 | 79.6 | - |

| | | | |
|-----------|--------|-------|--------|
| Total CFS | 316569 | 46527 | 374281 |
| Total AF | 627902 | 92284 | 742371 |

Legend

Notes

- ? = 1-9 hours of data missing (Average includes estimations)
- ! = 10 or more hours of data missing (Average not calculated)
- # = Station out of service
- ↑ = Record high air temperature
- ↓ = Record low air temperature
- ☐ = Monthly Averages

- ¹ Temperatures are weighted averages based on individual penstock flow and temperature
- Highlighted cells in the TCD column indicate a TCD change was made on that day
- ² Current control point (see page 3 for more details)
- ³ Column not used this month

| D A T E | Redding (RDD) Daily Air Temperatures (°F) | | | | | | | | | | | | | | | | | | | | | | | | | | | | | | | | | | | |
|------------------|---|-----|------|-------------|-----|------|-------|-----|------|--------|-----|------|--------|-----|------|--------|-----|------|--------|-----|------|--------|-----|------|--------|-----|------|--------|-----|------|--------|-----|------|---------|-----|------|
| | Actual | | | Forecasted | | | | | | | | | | | | | | | | | | | | | | | | | | | | | | | | |
| | Previous Day | | | Current Day | | | 1 Day | | | 2 Days | | | 3 Days | | | 4 Days | | | 5 Days | | | 6 Days | | | 7 Days | | | 8 Days | | | 9 Days | | | 10 Days | | |
| | ↓ | ↑ | Avg | ↓ | ↑ | Avg | ↓ | ↑ | Avg | ↓ | ↑ | Avg | ↓ | ↑ | Avg | ↓ | ↑ | Avg | ↓ | ↑ | Avg | ↓ | ↑ | Avg | ↓ | ↑ | Avg | ↓ | ↑ | Avg | ↓ | ↑ | Avg | ↓ | ↑ | Avg |
| 07/01 | 64 | 94 | 79.0 | 66 | 96 | 81.0 | 62 | 96 | 79.0 | 62 | 95 | 78.5 | 62 | 97 | 79.5 | 63 | 98 | 80.5 | 63 | 98 | 80.5 | 63 | 97 | 80.0 | 66 | 92 | 79.0 | 64 | 94 | 79.0 | 66 | 95 | 80.5 | 64 | 95 | 79.5 |
| 07/02 | 64 | 96 | 80.0 | 73 | 97 | 85.0 | 62 | 95 | 78.5 | 62 | 98 | 80.0 | 62 | 97 | 79.5 | 61 | 97 | 79.0 | 62 | 95 | 78.5 | 62 | 95 | 78.5 | 65 | 96 | 80.5 | 65 | 94 | 79.5 | 65 | 94 | 79.5 | 66 | 98 | 82.0 |
| 07/03 | 71 | 96 | 83.5 | 63 | 94 | 78.5 | 61 | 96 | 78.5 | 61 | 98 | 79.5 | 61 | 96 | 78.5 | 61 | 94 | 77.5 | 61 | 94 | 77.5 | 62 | 94 | 78.0 | 63 | 92 | 77.5 | 66 | 96 | 81.0 | 67 | 95 | 81.0 | 66 | 96 | 81.0 |
| 07/04 | 62 | 92 | 77.0 | 65 | 97 | 81.0 | 61 | 97 | 79.0 | 61 | 95 | 78.0 | 60 | 94 | 77.0 | 61 | 96 | 78.5 | 62 | 94 | 78.0 | 61 | 97 | 79.0 | 66 | 96 | 81.0 | 67 | 95 | 81.0 | 67 | 95 | 81.0 | 66 | 95 | 80.5 |
| 07/05 | 64 | 98 | 81.0 | 62 | 99 | 80.5 | 61 | 97 | 79.0 | 61 | 95 | 78.0 | 63 | 98 | 80.5 | 64 | 96 | 80.0 | 63 | 98 | 80.5 | 64 | 101 | 82.5 | 65 | 95 | 80.0 | 64 | 90 | 77.0 | 64 | 92 | 78.0 | 65 | 94 | 79.5 |
| 07/06 | 62 | 100 | 81.0 | 63 | 97 | 80.0 | 59 | 96 | 77.5 | 62 | 99 | 80.5 | 64 | 98 | 81.0 | 63 | 100 | 81.5 | 64 | 102 | 83.0 | 65 | 103 | 84.0 | 67 | 97 | 82.0 | 66 | 97 | 81.5 | 66 | 94 | 80.0 | 65 | 96 | 80.5 |
| 07/07 | 62 | 97 | 79.5 | 60 | 97 | 78.5 | 64 | 100 | 82.0 | 64 | 100 | 82.0 | 63 | 100 | 81.5 | 65 | 102 | 83.5 | 64 | 102 | 83.0 | 65 | 102 | 83.5 | 68 | 101 | 84.5 | 69 | 100 | 84.5 | 70 | 99 | 84.5 | 68 | 100 | 84.0 |
| 07/08 | 59 | 97 | 78.0 | 73 | 100 | 86.5 | 64 | 100 | 82.0 | 64 | 101 | 82.5 | 64 | 102 | 83.0 | 64 | 102 | 83.0 | 66 | 102 | 84.0 | 66 | 103 | 84.5 | 73 | 105 | 89.0 | 71 | 102 | 86.5 | 70 | 98 | 84.0 | 67 | 98 | 82.5 |
| 07/09 | 73 | 98 | 85.5 | 68 | 100 | 84.0 | 64 | 102 | 83.0 | 65 | 103 | 84.0 | 65 | 105 | 85.0 | 67 | 105 | 86.0 | 69 | 105 | 87.0 | 69 | 104 | 86.5 | 71 | 102 | 86.5 | 69 | 101 | 85.0 | 70 | 99 | 84.5 | 67 | 100 | 83.5 |
| 07/10 | 65 | 100 | 82.5 | 67 | 102 | 84.5 | 65 | 104 | 84.5 | 65 | 104 | 84.5 | 68 | 105 | 86.5 | 69 | 107 | 88.0 | 70 | 108 | 89.0 | 69 | 101 | 85.0 | 70 | 101 | 85.5 | 69 | 101 | 85.0 | 70 | 99 | 84.5 | 67 | 98 | 82.5 |
| 07/11 | 67 | 102 | 84.5 | 68 | 104 | 86.0 | 65 | 104 | 84.5 | 68 | 104 | 86.0 | 69 | 107 | 88.0 | 70 | 109 | 89.5 | 70 | 105 | 87.5 | 69 | 103 | 86.0 | 71 | 102 | 86.5 | 69 | 101 | 85.0 | 69 | 99 | 84.0 | 66 | 98 | 82.0 |
| 07/12 | 66 | 104 | 85.0 | 66 | 105 | 85.5 | 68 | 103 | 85.5 | 67 | 106 | 86.5 | 69 | 109 | 89.0 | 70 | 105 | 87.5 | 69 | 104 | 86.5 | 69 | 104 | 86.5 | 71 | 103 | 87.0 | 69 | 102 | 85.5 | 69 | 97 | 83.0 | 65 | 96 | 80.5 |
| 07/13 | 65 | 104 | 84.5 | 77 | 104 | 90.5 | 67 | 106 | 86.5 | 69 | 109 | 89.0 | 70 | 104 | 87.0 | 70 | 102 | 86.0 | 68 | 104 | 86.0 | 68 | 105 | 86.5 | 67 | 100 | 83.5 | 66 | 100 | 83.0 | 68 | 98 | 83.0 | 66 | 98 | 82.0 |
| 07/14 | 69 | 102 | 85.5 | 69 | 104 | 86.5 | 67 | 110 | 88.5 | 69 | 104 | 86.5 | 69 | 102 | 85.5 | 68 | 104 | 86.0 | 67 | 104 | 85.5 | 68 | 104 | 86.0 | 68 | 102 | 85.0 | 67 | 100 | 83.5 | 69 | 98 | 83.5 | 67 | 100 | 83.5 |
| 07/15 | 68 | 104 | 86.0 | 69 | 110 | 89.5 | 69 | 106 | 87.5 | 69 | 102 | 85.5 | 68 | 105 | 86.5 | 68 | 106 | 87.0 | 68 | 106 | 87.0 | 68 | 105 | 86.5 | 71 | 106 | 88.5 | 70 | 105 | 87.5 | 71 | 101 | 86.0 | 68 | 100 | 84.0 |
| 07/16 | 69 | 111 | 90.0 | 70 | 106 | 88.0 | 69 | 102 | 85.5 | 67 | 104 | 85.5 | 69 | 106 | 87.5 | 70 | 107 | 88.5 | 69 | 104 | 86.5 | 67 | 101 | 84.0 | 66 | 97 | 81.5 | 65 | 94 | 79.5 | 66 | 94 | 80.0 | 64 | 96 | 80.0 |
| 07/17 | 69 | 103 | 86.0 | 71 | 101 | 86.0 | 67 | 104 | 85.5 | 69 | 106 | 87.5 | 68 | 105 | 86.5 | 68 | 105 | 86.5 | 67 | 101 | 84.0 | 64 | 100 | 82.0 | 66 | 99 | 82.5 | 66 | 100 | 83.0 | 68 | 98 | 83.0 | 66 | 98 | 82.0 |
| 07/18 | 71 | 100 | 85.5 | 70 | 104 | 87.0 | 68 | 106 | 87.0 | 68 | 105 | 86.5 | 67 | 103 | 85.0 | 66 | 99 | 82.5 | 64 | 98 | 81.0 | 65 | 100 | 82.5 | 67 | 98 | 82.5 | 66 | 101 | 83.5 | 67 | 99 | 83.0 | 66 | 99 | 82.5 |
| 07/19 | 69 | 103 | 86.0 | 71 | 106 | 88.5 | 68 | 106 | 87.0 | 68 | 104 | 86.0 | 65 | 101 | 83.0 | 65 | 100 | 82.5 | 66 | 101 | 83.5 | 66 | 102 | 84.0 | 67 | 102 | 84.5 | 68 | 101 | 84.5 | 70 | 100 | 85.0 | 66 | 98 | 82.0 |
| 07/20 | 70 | 107 | 88.5 | 73 | 105 | 89.0 | 68 | 104 | 86.0 | 67 | 99 | 83.0 | 65 | 98 | 81.5 | 65 | 99 | 82.0 | 64 | 99 | 81.5 | 64 | 101 | 82.5 | 67 | 100 | 83.5 | 67 | 102 | 84.5 | 69 | 100 | 84.5 | 66 | 98 | 82.0 |
| 07/21 | 72 | 102 | 87.0 | 71 | 102 | 86.5 | 66 | 99 | 82.5 | 64 | 96 | 80.0 | 65 | 99 | 82.0 | 64 | 100 | 82.0 | 65 | 104 | 84.5 | 68 | 106 | 87.0 | 71 | 107 | 89.0 | 70 | 103 | 86.5 | 70 | 100 | 85.0 | 66 | 100 | 83.0 |
| 07/22 | 71 | 100 | 85.5 | 71 | 98 | 84.5 | 65 | 97 | 81.0 | 65 | 100 | 82.5 | 64 | 101 | 82.5 | 66 | 104 | 85.0 | 67 | 104 | 85.5 | 68 | 103 | 85.5 | 66 | 97 | 81.5 | 65 | 93 | 79.0 | 66 | 95 | 80.5 | 65 | 97 | 81.0 |
| 07/23 | 68 | 95 | 81.5 | 67 | 97 | 82.0 | 64 | 100 | 82.0 | 63 | 102 | 82.5 | 67 | 103 | 85.0 | 67 | 102 | 84.5 | 67 | 102 | 84.5 | 65 | 101 | 83.0 | 65 | 100 | 82.5 | 65 | 104 | 84.5 | 66 | 98 | 82.0 | 65 | 98 | 81.5 |
| 07/24 | 66 | 98 | 82.0 | 69 | 100 | 84.5 | 64 | 103 | 83.5 | 68 | 105 | 86.5 | 69 | 103 | 86.0 | 67 | 102 | 84.5 | 65 | 99 | 82.0 | 63 | 99 | 81.0 | 66 | 99 | 82.5 | 68 | 105 | 86.5 | 70 | 102 | 86.0 | 68 | 103 | 85.5 |
| 07/25 | 67 | 101 | 84.0 | 67 | 103 | 85.0 | 68 | 106 | 87.0 | 70 | 103 | 86.5 | 68 | 103 | 85.5 | 65 | 97 | 81.0 | 63 | 98 | 80.5 | 64 | 99 | 81.5 | 65 | 97 | 81.0 | 65 | 98 | 81.5 | 67 | 97 | 82.0 | 66 | 98 | 82.0 |
| 07/26 | 67 | 101 | 84.0 | 69 | 104 | 86.5 | 69 | 104 | 86.5 | 68 | 104 | 86.0 | 66 | 99 | 82.5 | 62 | 98 | 80.0 | 63 | 98 | 80.5 | 64 | 101 | 82.5 | 67 | 103 | 85.0 | 67 | 103 | 85.0 | 67 | 100 | 83.5 | 67 | 100 | 83.5 |
| 07/27 | 68 | 106 | 87.0 | 73 | 104 | 88.5 | 68 | 104 | 86.0 | 66 | 101 | 83.5 | 62 | 99 | 80.5 | 62 | 97 | 79.5 | 64 | 101 | 82.5 | 66 | 102 | 84.0 | 69 | 98 | 83.5 | 69 | 100 | 84.5 | 70 | 101 | 85.5 | 66 | 100 | 83.0 |
| 07/28 | 71 | 104 | 87.5 | 71 | 104 | 87.5 | 67 | 102 | 84.5 | 65 | 102 | 83.5 | 64 | 101 | 82.5 | 64 | 103 | 83.5 | 66 | 103 | 84.5 | 67 | 102 | 84.5 | 68 | 99 | 83.5 | 68 | 103 | 85.5 | 70 | 100 | 85.0 | 67 | 101 | 84.0 |
| 07/29 | 71 | 105 | 88.0 | 70 | 102 | 86.0 | 63 | 101 | 82.0 | 63 | 102 | 82.5 | 64 | 104 | 84.0 | 66 | 104 | 85.0 | 66 | 102 | 84.0 | 66 | 103 | 84.5 | 68 | 102 | 85.0 | 68 | 101 | 84.5 | 69 | 99 | 84.0 | 66 | 99 | 82.5 |
| 07/30 | 70 | 102 | 86.0 | 63 | 99 | 81.0 | 63 | 102 | 82.5 | 64 | 103 | 83.5 | 65 | 102 | 83.5 | 66 | 102 | 84.0 | 66 | 102 | 84.0 | 66 | 103 | 84.5 | 67 | 98 | 82.5 | 66 | 100 | 83.0 | 67 | 98 | 82.5 | 65 | 97 | 81.0 |
| 07/31 | 63 | 102 | 82.5 | 65 | 101 | 83.0 | 62 | 102 | 82.0 | 65 | 102 | 83.5 | 65 | 100 | 82.5 | 65 | 100 | 82.5 | 64 | 100 | 82.0 | 63 | 98 | 80.5 | 68 | 98 | 83.0 | 66 | 97 | 81.5 | 66 | 97 | 81.5 | 65 | 98 | 81.5 |

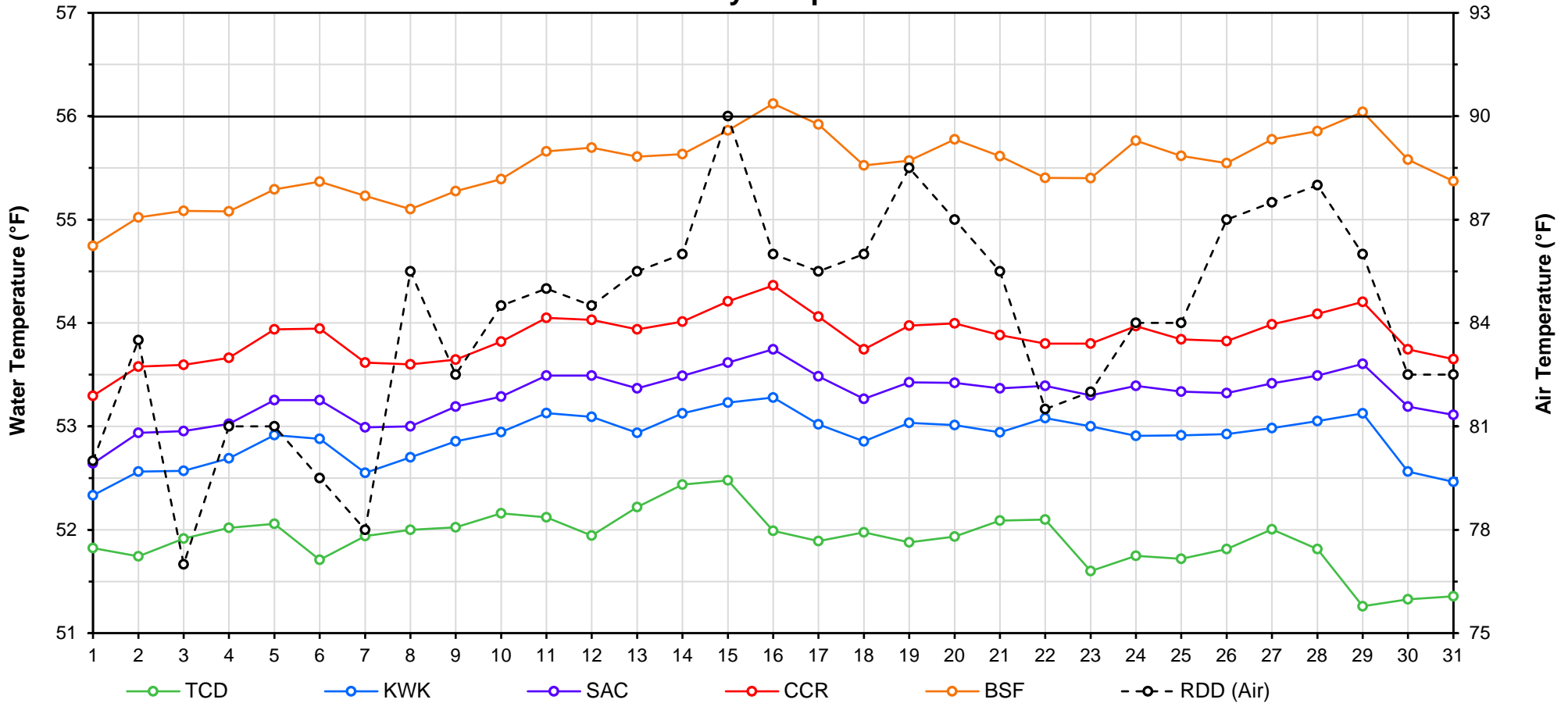
Web Links

- [10-Day Min/Max Forecast](#)
- [Previous Days Min/Max Actuals](#)

Legend

- NR = Forecasted temperatures not recorded
- 100** = Previous day actual temperatures in red and bolded indicate a record temperature for that date

Mean Daily Temperatures



| Station Details | | | |
|------------------|------------------|--|----------------------------|
| Code | Body of Water | Location ¹ | CDEC Link |
| TCD | N/A | Shasta Power Plant | N/A |
| SHD | Sacramento River | 0.3 miles downstream of Shasta Power Plant | Click Here |
| SPP | N/A | Spring Creek Power Plant | N/A |
| KWK | Sacramento River | 0.8 miles downstream of Keswick Dam | Click Here |
| SAC | Sacramento River | 4.8 miles downstream of Keswick Dam | Click Here |
| CCR | Sacramento River | 9.7 miles downstream of Keswick Dam | Click Here |
| BSF | Sacramento River | 25 miles downstream of Keswick Dam | Click Here |
| JLF | Sacramento River | 34 miles downstream of Keswick Dam | Click Here |
| BND | Sacramento River | 41 miles downstream of Keswick Dam | Click Here |
| RDB | Sacramento River | 58 miles downstream of Keswick Dam | Click Here |
| IGO | Clear Creek | 7.3 miles downstream of Whiskeytown Dam | Click Here |
| LWS | Trinity River | 1.1 miles downstream of Lewiston Dam | Click Here |
| DGC ² | Trinity River | 19 miles downstream of Lewiston Dam | Click Here |
| NFH ³ | Trinity River | 38 miles downstream of Lewiston Dam | Click Here |

| Temperature Control Point | | |
|---------------------------|-------------|------------------|
| Point | Temp. (°F) | Begin Date |
| BSF | 56.0 | 5/15/2019 |
| | | |
| | | |
| | | |
| | | |
| | | |
| | | |

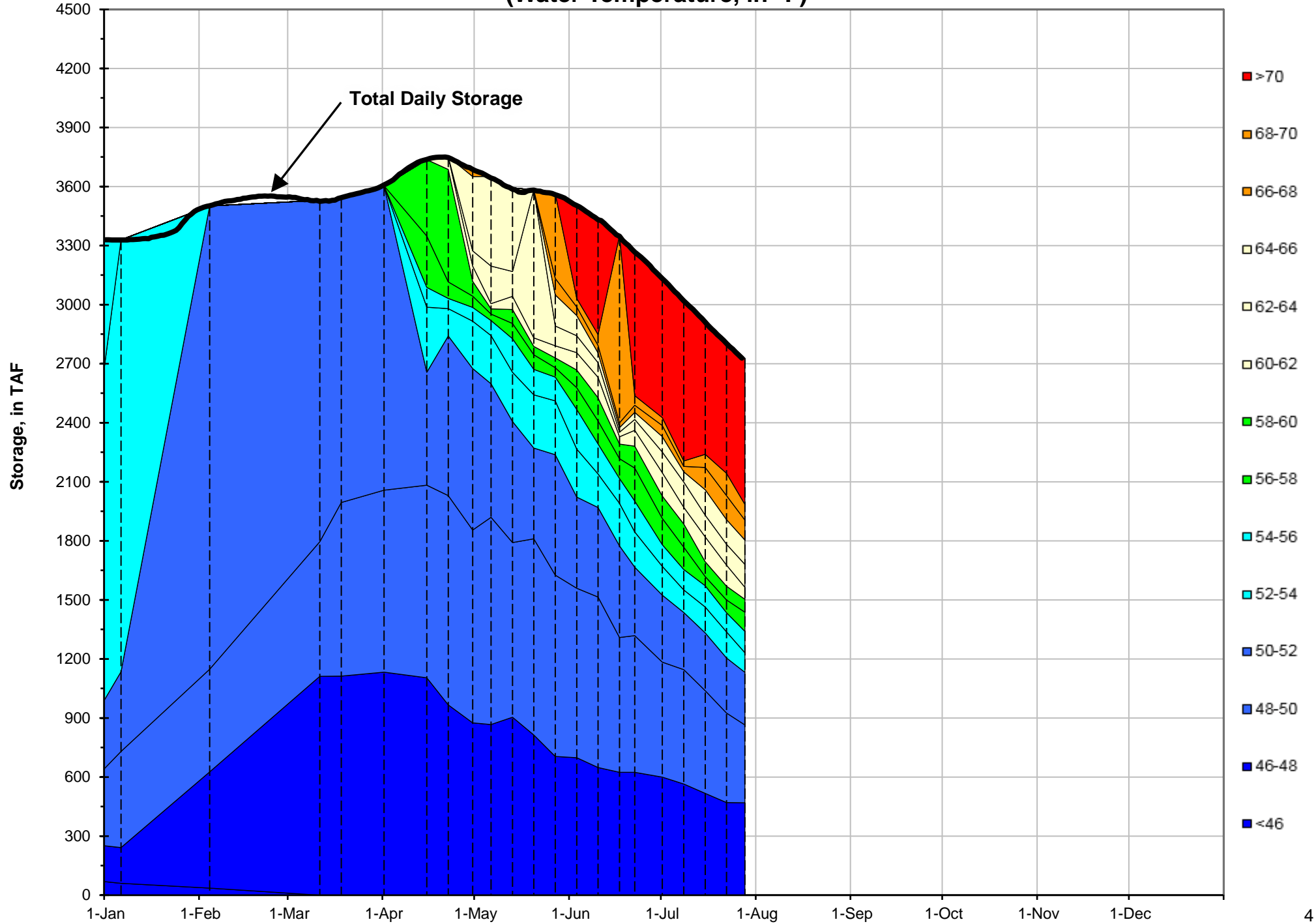
Notes

¹ Distances are approximate

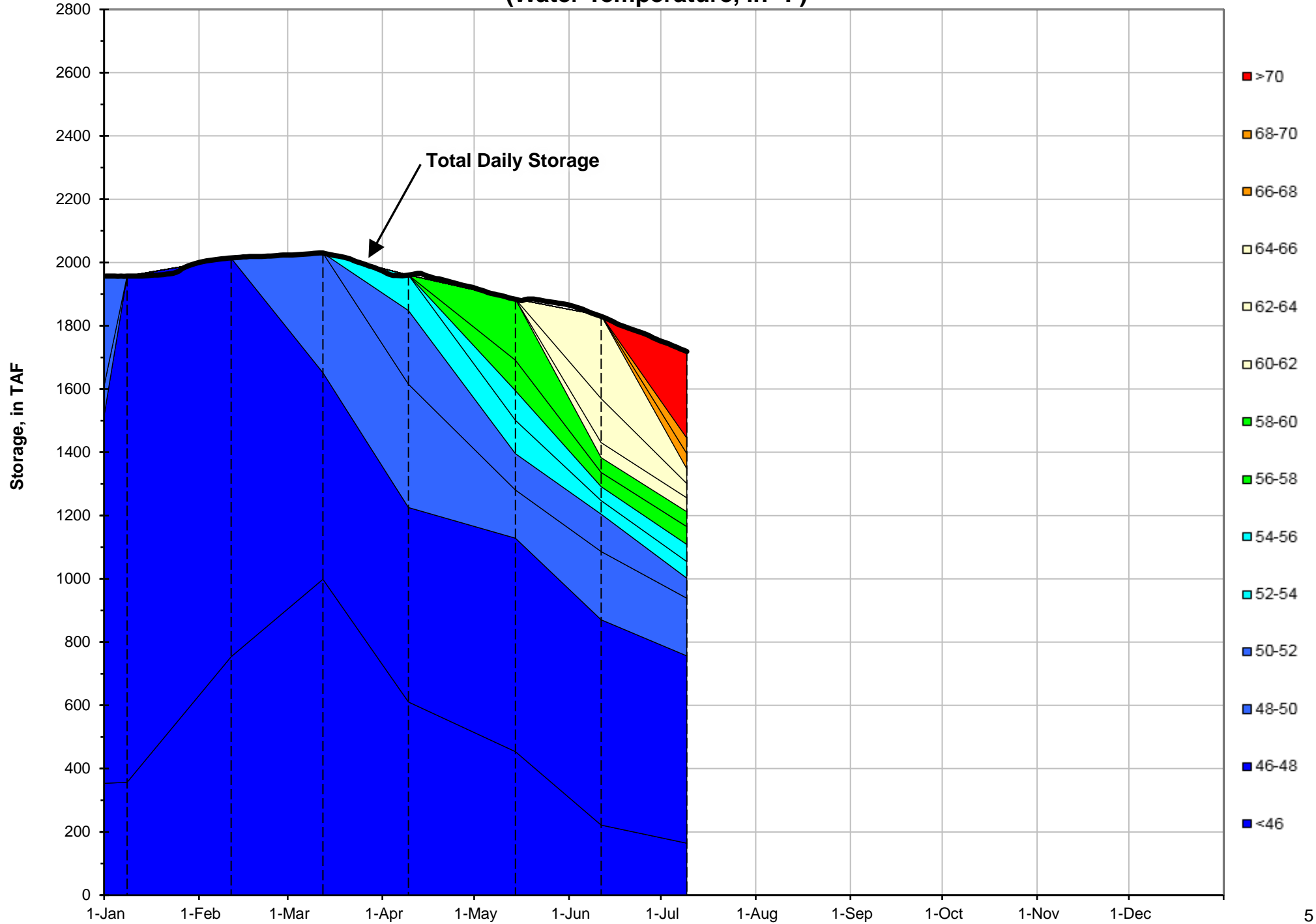
² DGC is only reported in September

³ NFH is only reported in October, November and December

Shasta Lake Isothermobaths - 2020 (Water Temperature, in °F)



Trinity Lake Isothermobaths - 2020 (Water Temperature, in °F)



Whiskeytown Lake Isothermobaths - 2020 (Water Temperature, in °F)

