

Northern CVP Water Temperature Report

July - 2019

Page	Description
1	- Mean Daily Water Temperature, Release Flow Rates and Air Temperatures with Monthly Averages
2	- Redding 10-Day Forecasted Air Temperatures
3	- Sacramento River Mean Daily Water Temperature, Air Temperature and 10-Day Forecasted Air Temperature Plot - Water Temperature Measuring Station Details - Temperature Control Point Details
4	- Daily Maximum and 7DADM
5	- Shasta Lake Isothermobaths Plot
6	- Trinity Lake Isothermobaths Plot
7	- Whiskeytown Lake Isothermobaths Plot
x	- TCD Configuration (External Link)



All Data in this Report is Preliminary and Subject to Change

DATE	Mean Daily Water Temperatures (°F)													Mean Daily Release (CFS)			Mean Daily Air Temperatures (°F)				
	TCD ¹	SHD	SPP ¹	KWK	SAC	CCR	BSF ²	JLF	BND	RDB	IGO	LWS	----- ³	Shasta Generation	Spring Creek P.P.	Keswick Total	RDD	BSF	RDB	LWS	
Jun	51.0	50.3	52.5	51.7	52.2	52.8	55.0	57.1	57.8	58.8	58.2	48.6	-	8544	2160	11089	80.2	76.2	77.1	-	
07/01	51.2	50.6	# -	51.8	52.3	52.9	54.6	56.3	57.0	58.1	58.2	48.7	-	9090	977	10990	75.0	71.8	72.8	-	
07/02	51.3	50.7	! -	51.8	52.3	53.0	54.9	56.6	57.3	58.1	58.4	49.2	-	9351	1165	10982	77.0	75.4	75.2	-	
07/03	51.4	50.8	53.7	52.0	52.5	53.1	55.0	56.8	57.5	58.5	!	-	49.4	-	9346	1200	10990	77.5	75.0	76.0	-
07/04	51.3	50.7	53.6	52.0	52.5	53.1	55.1	56.9	57.7	58.8	#	-	49.5	-	9101	1454	10909	82.0	77.7	78.3	-
07/05	51.5	50.9	53.6	52.1	52.6	53.3	55.3	57.1	57.9	59.0	#	-	49.3	-	9387	1385	9472	81.0	77.5	78.2	-
07/06	51.7	51.1	53.7	52.1	52.6	53.3	55.4	57.3	58.1	59.3	#	-	? 49.3	-	10203	747	10895	82.5	79.9	78.7	-
07/07	51.5	50.9	53.7	52.2	52.8	53.5	55.4	57.2	58.0	59.1	#	-	49.4	-	9364	1110	10895	80.0	75.5	75.1	-
07/08	51.3	50.6	53.7	52.4	52.9	53.6	55.6	57.4	58.2	59.2	#	-	49.7	-	8554	1601	10894	76.5	71.8	71.2	-
07/09	51.3	50.6	53.9	51.9	52.5	53.1	55.0	57.0	57.8	59.0	#	-	49.7	-	9647	784	10893	77.0	72.8	71.9	-
07/10	51.0	50.2	53.8	51.9	52.5	53.0	55.0	56.6	57.3	58.3	#	-	50.1	-	8657	1695	10888	78.5	74.7	74.9	-
07/11	51.1	50.4	54.0	51.8	52.5	? 53.1	55.3	57.2	58.0	59.0	#	-	50.1	-	9592	987	10898	82.5	78.4	79.3	-
07/12	51.5	50.4	54.0	52.1	52.6	53.1	55.3	57.2	58.0	59.2		60.2	49.9	-	9156	1738	10897	85.0	80.8	80.8	-
07/13	51.4	50.5	54.1	52.2	52.8	53.3	? 55.7	57.6	58.4	59.6	59.8	50.4	-	9361	1402	10923	86.0	81.5	81.3	-	
07/14	51.3	50.5	54.1	52.1	52.8	53.3	55.7	57.6	58.4	59.6	59.5	50.7	-	9132	1347	10937	84.0	80.2	79.2	-	
07/15	? 51.3	50.5	54.1	52.1	52.7	53.2	55.3	57.1	58.0	59.2	58.9	50.6	-	8337	1425	10925	82.5	79.8	81.4	-	
07/16	51.2	50.4	54.2	52.2	52.8	53.3	55.5	57.2	58.0	59.0	59.6	50.9	-	9190	1428	10888	83.0	79.5	79.0	-	
07/17	51.3	50.6	54.3	52.0	52.7	53.3	55.5	57.4	58.3	59.5	59.6	51.1	-	8968	1646	10889	85.0	81.1	80.0	-	
07/18	51.0	50.4	54.2	52.0	52.9	53.5	55.8	57.6	58.4	59.8	59.7	51.4	-	9232	1101	11122	84.0	79.3	79.1	-	
07/19	51.1	50.3	54.3	51.7	52.6	53.2	55.4	57.2	58.1	59.6	59.4	51.5	-	9340	1244	10894	82.5	78.4	78.8	-	
07/20	51.0	50.3	54.4	51.7	52.5	53.1	55.2	57.0	57.8	59.2	58.6	51.2	-	9178	1236	10893	80.0	77.2	76.3	-	
07/21	51.1	50.4	54.5	51.5	52.4	52.9	55.1	56.8	57.7	59.0	58.4	50.9	-	9990	758	10890	82.5	78.0	78.0	-	
07/22	51.2	50.4	54.5	51.7	52.4	52.9	55.0	56.7	57.6	58.9	58.7	51.0	-	9479	1160	10922	85.5	80.4	81.2	-	
07/23	51.0	50.1	54.6	52.0	52.8	53.3	55.3	57.1	57.9	59.2	58.8	51.2	-	8380	1647	11029	83.5	79.9	80.0	-	
07/24	51.0	50.1	54.6	51.7	52.5	53.1	55.3	57.1	57.9	59.2	58.6	51.3	-	9079	832	10930	85.0	79.5	79.6	-	
07/25	50.4	49.9	54.9	51.1	52.0	52.5	54.6	56.3	57.2	58.5	57.8	51.2	-	10500	823	10897	86.0	79.8	81.3	-	
07/26	50.4	49.8	54.8	51.1	51.9	52.3	54.3	55.9	56.7	58.0	58.4	51.2	-	9281	1365	10886	85.5	80.0	78.7	-	
07/27	50.4	49.8	54.8	51.4	52.0	52.5	54.4	56.1	56.9	58.1	58.3	51.2	-	8842	1517	10889	85.5	82.3	82.1	-	
07/28	50.5	49.9	54.9	51.1	? 52.0	52.6	54.6	56.4	57.2	58.4	59.0	51.3	-	9763	484	10891	88.5	82.4	83.8	-	
07/29	50.6	50.0	54.9	51.2	52.0	52.5	54.6	56.3	57.1	58.6	58.8	51.0	-	9281	1599	10885	85.0	80.7	80.8	-	
07/30	50.7	50.1	55.1	51.4	52.2	52.7	54.7	56.4	57.3	58.6	58.6	51.2	-	9311	875	10897	82.0	77.5	76.1	-	
07/31	50.5	? 50.1	55.1	51.6	52.3	52.8	54.6	56.1	56.9	58.2	58.3	51.6	-	7654	1721	10879	82.5	76.7	77.7	-	
Jul	51.1	50.4	54.3	51.8	52.5	53.0	55.1	56.9	57.7	58.9	58.9	50.5	-	9218	1240	10873	82.4	78.2	78.3	-	
				Total CFS			285746	38453	337069												
				Total AF			566766	76270	668563												

Legend

- ? = 1-9 hours of data missing (Average includes estimations)
- ! = 10 or more hours of data missing (Average not calculated)
- # = Station out of service
- ↑ = Record high air temperature
- ↓ = Record low air temperature
- = Monthly Averages

Notes

- ¹ Temperatures are weighted averages based on individual penstock flow and temperature
- Highlighted cells in the TCD column indicate a TCD change was made on that day
- ² Current control point (see page 3 for more details)
- ³ Column not used this month

D A T E	Redding (RDD) Daily Air Temperatures (°F)																																			
	Actual			Forecasted																																
	Previous Day			Current Day			1 Day			2 Days			3 Days			4 Days			5 Days			6 Days			7 Days			8 Days			9 Days			10 Days		
	↓	↑	Avg	↓	↑	Avg	↓	↑	Avg	↓	↑	Avg	↓	↑	Avg	↓	↑	Avg	↓	↑	Avg	↓	↑	Avg	↓	↑	Avg	↓	↑	Avg	↓	↑	Avg	↓	↑	Avg
07/01	60	93	76.5	60	93	76.5	61	93	77.0	62	91	76.5	62	94	78.0	64	102	83.0	67	103	85.0	68	102	85.0	66	95	80.5	67	100	83.5	70	98	84.0	68	100	84.0
07/02	59	91	75.0	62	90	76.0	63	92	77.5	63	94	78.5	65	98	81.5	66	99	82.5	67	96	81.5	66	95	80.5	66	96	81.0	69	100	84.5	69	100	84.5	69	100	84.5
07/03	61	93	77.0	64	93	78.5	63	96	79.5	65	99	82.0	66	99	82.5	66	97	81.5	64	96	80.0	66	101	83.5	66	98	82.0	68	100	84.0	70	99	84.5	68	98	83.0
07/04	62	93	77.5	NR	97	NR	65	99	82.0	66	98	82.0	66	92	79.0	63	92	77.5	65	91	78.0	66	96	81.0	66	95	80.5	66	96	81.0	69	96	82.5	68	99	83.5
07/05	66	98	82.0	NR	99	NR	66	98	82.0	66	93	79.5	62	90	76.0	63	93	78.0	65	96	80.5	66	98	82.0	67	96	81.5	66	96	81.0	69	97	83.0	69	99	84.0
07/06	64	98	81.0	68	100	84.0	66	96	81.0	62	92	77.0	63	95	79.0	65	96	80.5	66	98	82.0	67	99	83.0	68	99	83.5	67	99	83.0	68	97	82.5	67	99	83.0
07/07	67	98	82.5	67	95	81.0	62	92	77.0	63	93	78.0	64	95	79.5	65	96	80.5	67	99	83.0	67	99	83.0	66	97	81.5	68	95	81.5	69	97	83.0	68	99	83.5
07/08	65	95	80.0	65	90	77.5	63	90	76.5	64	93	78.5	65	97	81.0	66	101	83.5	67	100	83.5	65	97	81.0	67	98	82.5	67	100	83.5	70	99	84.5	69	99	84.0
07/09	65	88	76.5	65	89	77.0	64	94	79.0	65	100	82.5	67	104	85.5	68	102	85.0	66	100	83.0	65	100	82.5	67	96	81.5	65	93	79.0	66	92	79.0	66	93	79.5
07/10	65	89	77.0	65	94	79.5	65	99	82.0	66	104	85.0	68	104	86.0	67	100	83.5	65	98	81.5	65	98	81.5	68	97	82.5	67	95	81.0	69	98	83.5	68	99	83.5
07/11	64	93	78.5	66	97	81.5	67	99	83.0	68	99	83.5	67	96	81.5	65	98	81.5	65	98	81.5	65	98	81.5	67	96	81.5	68	95	81.5	67	94	80.5	65	95	80.0
07/12	67	98	82.5	70	102	86.0	68	101	84.5	67	98	82.5	65	96	80.5	65	99	82.0	67	100	83.5	67	100	83.5	70	100	85.0	69	100	84.5	69	98	83.5	67	99	83.0
07/13	69	101	85.0	72	102	87.0	66	99	82.5	65	97	81.0	65	98	81.5	66	98	82.0	65	98	81.5	65	97	81.0	68	96	82.0	67	97	82.0	66	96	81.0	66	98	82.0
07/14	72	100	86.0	70	100	85.0	66	98	82.0	66	99	82.5	66	101	83.5	67	99	83.0	67	97	82.0	65	95	80.0	66	93	79.5	65	95	80.0	67	95	81.0	66	98	82.0
07/15	70	98	84.0	68	98	83.0	67	99	83.0	67	101	84.0	68	100	84.0	66	96	81.0	65	97	81.0	64	97	80.5	69	100	84.5	68	101	84.5	69	100	84.5	68	100	84.0
07/16	67	98	82.5	70	99	84.5	67	101	84.0	68	98	83.0	66	95	80.5	65	98	81.5	66	98	82.0	67	98	82.5	69	103	86.0	68	103	85.5	69	99	84.0	67	100	83.5
07/17	68	98	83.0	70	100	85.0	68	98	83.0	66	95	80.5	66	98	82.0	67	99	83.0	68	99	83.5	67	98	82.5	69	100	84.5	68	102	85.0	69	101	85.0	68	100	84.0
07/18	69	101	85.0	72	100	86.0	66	97	81.5	67	99	83.0	67	99	83.0	68	97	82.5	67	97	82.0	66	96	81.0	64	100	82.0	66	102	84.0	68	99	83.5	67	99	83.0
07/19	71	97	84.0	69	97	83.0	68	99	83.5	67	99	83.0	68	99	83.5	70	98	84.0	67	101	84.0	69	102	85.5	66	104	85.0	67	104	85.5	70	101	85.5	67	99	83.0
07/20	67	98	82.5	66	100	83.0	67	101	84.0	68	102	85.0	67	102	84.5	66	104	85.0	68	104	86.0	69	104	86.5	68	106	87.0	70	105	87.5	70	102	86.0	67	98	82.5
07/21	64	96	80.0	67	100	83.5	68	102	85.0	67	101	84.0	66	104	85.0	68	105	86.5	69	105	87.0	68	106	87.0	68	102	85.0	68	101	84.5	68	99	83.5	66	99	82.5
07/22	67	98	82.5	71	102	86.5	67	101	84.0	66	104	85.0	68	105	86.5	68	102	85.0	68	103	85.5	69	103	86.0	69	103	86.0	66	101	83.5	67	98	82.5	66	99	82.5
07/23	70	101	85.5	67	101	84.0	65	104	84.5	67	104	85.5	70	104	87.0	69	106	87.5	70	107	88.5	69	103	86.0	68	99	83.5	67	99	83.0	67	98	82.5	65	97	81.0
07/24	67	100	83.5	71	104	87.5	67	104	85.5	69	103	86.0	69	109	89.0	72	109	90.5	69	104	86.5	67	101	84.0	67	100	83.5	65	99	82.0	67	97	82.0	66	99	82.5
07/25	68	102	85.0	70	104	87.0	70	102	86.0	70	108	89.0	72	108	90.0	70	103	86.5	66	100	83.0	65	99	82.0	66	99	82.5	65	100	82.5	67	99	83.0	65	98	81.5
07/26	69	103	86.0	70	101	85.5	70	107	88.5	72	107	89.5	68	102	85.0	66	98	82.0	63	98	80.5	64	98	81.0	66	99	82.5	66	100	83.0	68	99	83.5	67	101	84.0
07/27	70	101	85.5	65	107	86.0	72	107	89.5	70	102	86.0	66	99	82.5	64	98	81.0	63	98	80.5	64	100	82.0	66	100	83.0	66	103	84.5	68	100	84.0	66	99	82.5
07/28	64	107	85.5	72	107	89.5	68	101	84.5	64	99	81.5	64	99	81.5	63	98	80.5	63	99	81.0	65	101	83.0	68	104	86.0	68	106	87.0	71	103	87.0	68	102	85.0
07/29	70	107	88.5	71	101	86.0	64	98	81.0	63	99	81.0	63	98	80.5	63	97	80.0	65	99	82.0	66	101	83.5	69	102	85.5	68	104	86.0	70	101	85.5	67	101	84.0
07/30	69	101	85.0	71	98	84.5	62	99	80.5	62	98	80.0	62	98	80.0	64	100	82.0	66	101	83.5	66	101	83.5	68	102	85.0	66	101	83.5	66	96	81.0	65	98	81.5
07/31	68	96	82.0	65	99	82.0	62	98	80.0	63	99	81.0	64	103	83.5	66	103	84.5	66	103	84.5	66	101	83.5	67	100	83.5	65	95	80.0	65	95	80.0	64	98	81.0

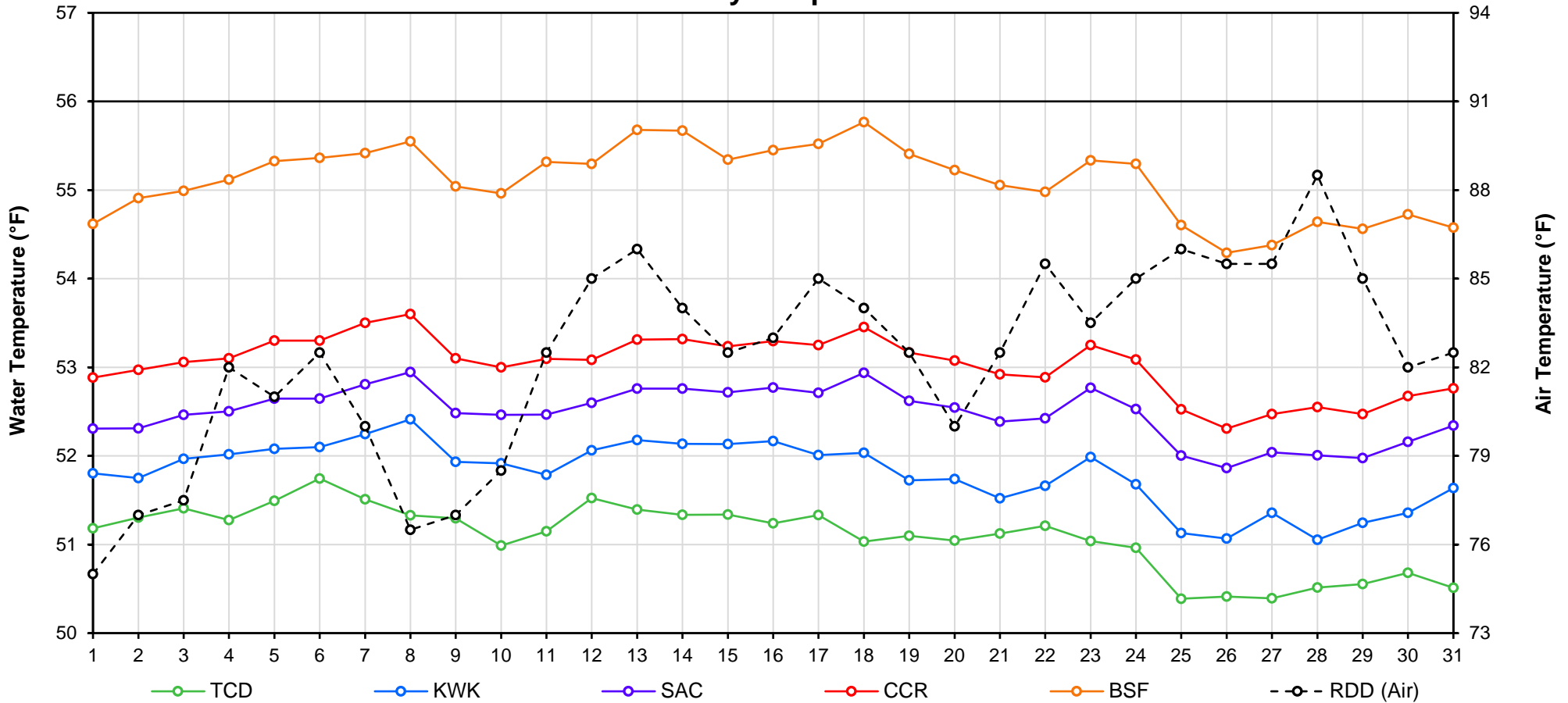
Web Links

- [10-Day Min/Max Forecast](#)
- [Previous Days Min/Max Actuals](#)

Legend

- NR = Forecasted temperatures not recorded
- 100** = Previous day actual temperatures in red and bolded indicate a record temperature for that date

Mean Daily Temperatures



Station Details			
Code	Body of Water	Location ¹	CDEC Link
TCD	N/A	Shasta Power Plant	N/A
SHD	Sacramento River	0.3 miles downstream of Shasta Power Plant	Click Here
SPP	N/A	Spring Creek Power Plant	N/A
KWK	Sacramento River	0.8 miles downstream of Keswick Dam	Click Here
SAC	Sacramento River	4.8 miles downstream of Keswick Dam	Click Here
CCR	Sacramento River	9.7 miles downstream of Keswick Dam	Click Here
BSF	Sacramento River	25 miles downstream of Keswick Dam	Click Here
JLF	Sacramento River	34 miles downstream of Keswick Dam	Click Here
BND	Sacramento River	41 miles downstream of Keswick Dam	Click Here
RDB	Sacramento River	58 miles downstream of Keswick Dam	Click Here
IGO	Clear Creek	7.3 miles downstream of Whiskeytown Dam	Click Here
LWS	Trinity River	1.1 miles downstream of Lewiston Dam	Click Here
DGC ²	Trinity River	19 miles downstream of Lewiston Dam	Click Here
NFH ³	Trinity River	38 miles downstream of Lewiston Dam	Click Here

Temperature Control Point		
Point	Temp. (°F)	Begin Date
BSF	56.0	5/15/2019

Notes

¹ Distances are approximate

² DGC is only reported in September

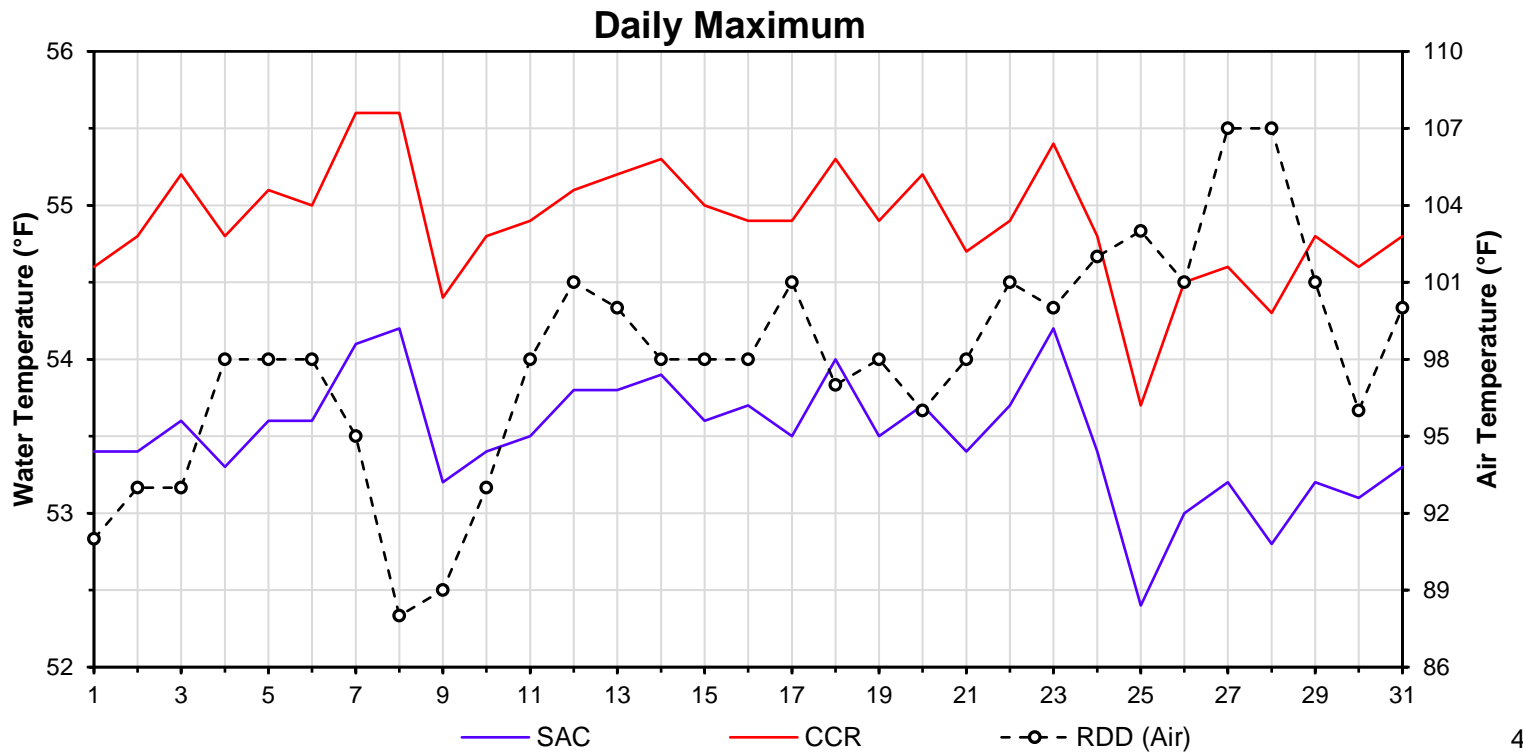
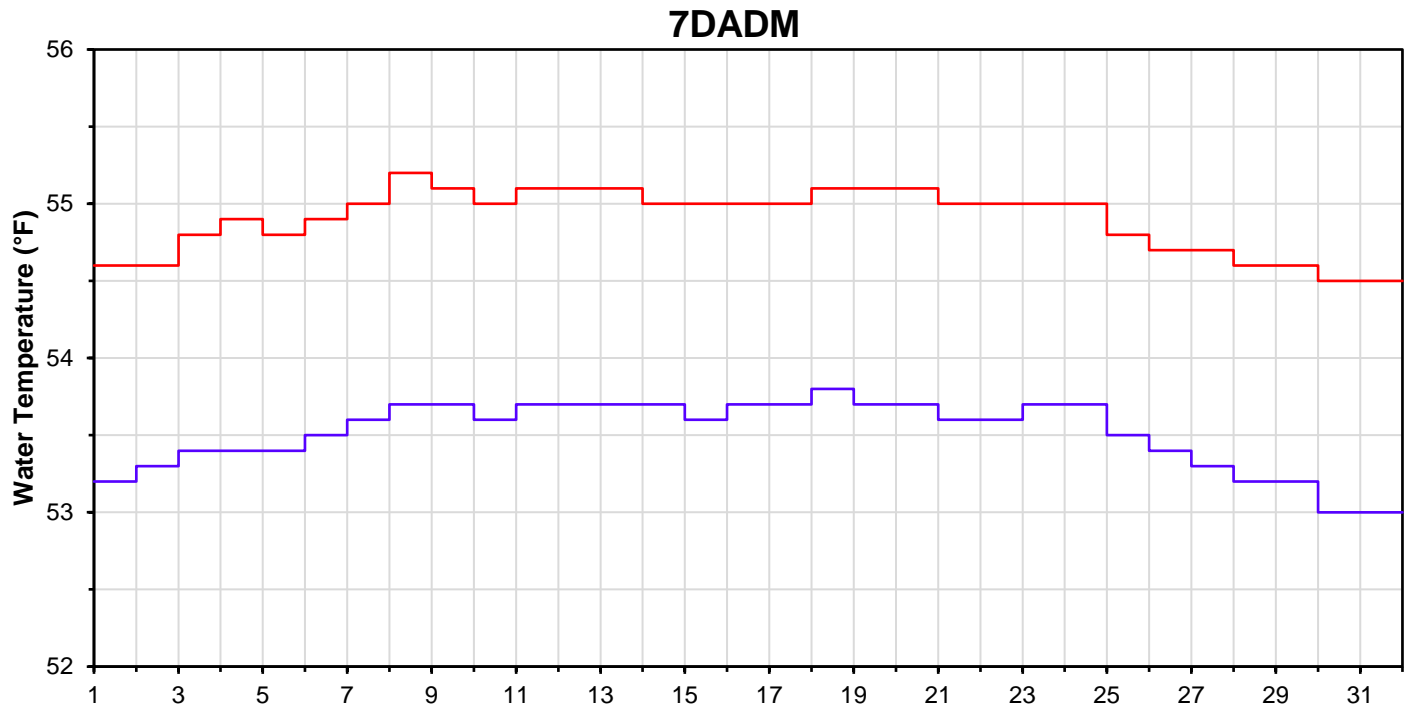
³ NFH is only reported in October, November and December

DATE	Daily Max		7DADM ¹		DAT ²
	SAC	CCR	SAC	CCR	BSF
07/01	53.4	54.6	53.2	54.6	54.6
07/02	53.4	54.8	53.3	54.6	54.9
07/03	53.6	55.2	53.4	54.8	55.0
07/04	53.3	54.8	53.4	54.9	55.1
07/05	53.6	55.1	53.4	54.8	55.3
07/06	53.6	55.0	53.5	54.9	55.4
07/07	54.1	55.6	53.6	55.0	55.4
07/08	54.2	55.6	53.7	55.2	55.6
07/09	53.2	54.4	53.7	55.1	55.0
07/10	53.4	54.8	53.6	55.0	55.0
07/11	53.5	54.9	53.7	55.1	55.3
07/12	53.8	55.1	53.7	55.1	55.3
07/13	53.8	55.2	53.7	55.1	55.7
07/14	53.9	55.3	53.7	55.0	55.7
07/15	53.6	55.0	53.6	55.0	55.3
07/16	53.7	54.9	53.7	55.0	55.5
07/17	53.5	54.9	53.7	55.0	55.5
07/18	54.0	55.3	53.8	55.1	55.8
07/19	53.5	54.9	53.7	55.1	55.4
07/20	53.7	55.2	53.7	55.1	55.2
07/21	53.4	54.7	53.6	55.0	55.1
07/22	53.7	54.9	53.6	55.0	55.0
07/23	54.2	55.4	53.7	55.0	55.3
07/24	53.4	54.8	53.7	55.0	55.3
07/25	52.4	53.7	53.5	54.8	54.6
07/26	53.0	54.5	53.4	54.7	54.3
07/27	53.2	54.6	53.3	54.7	54.4
07/28	52.8	54.3	53.2	54.6	54.6
07/29	53.2	54.8	53.2	54.6	54.6
07/30	53.1	54.6	53.0	54.5	54.7
07/31	53.3	54.8	53.0	54.5	54.6

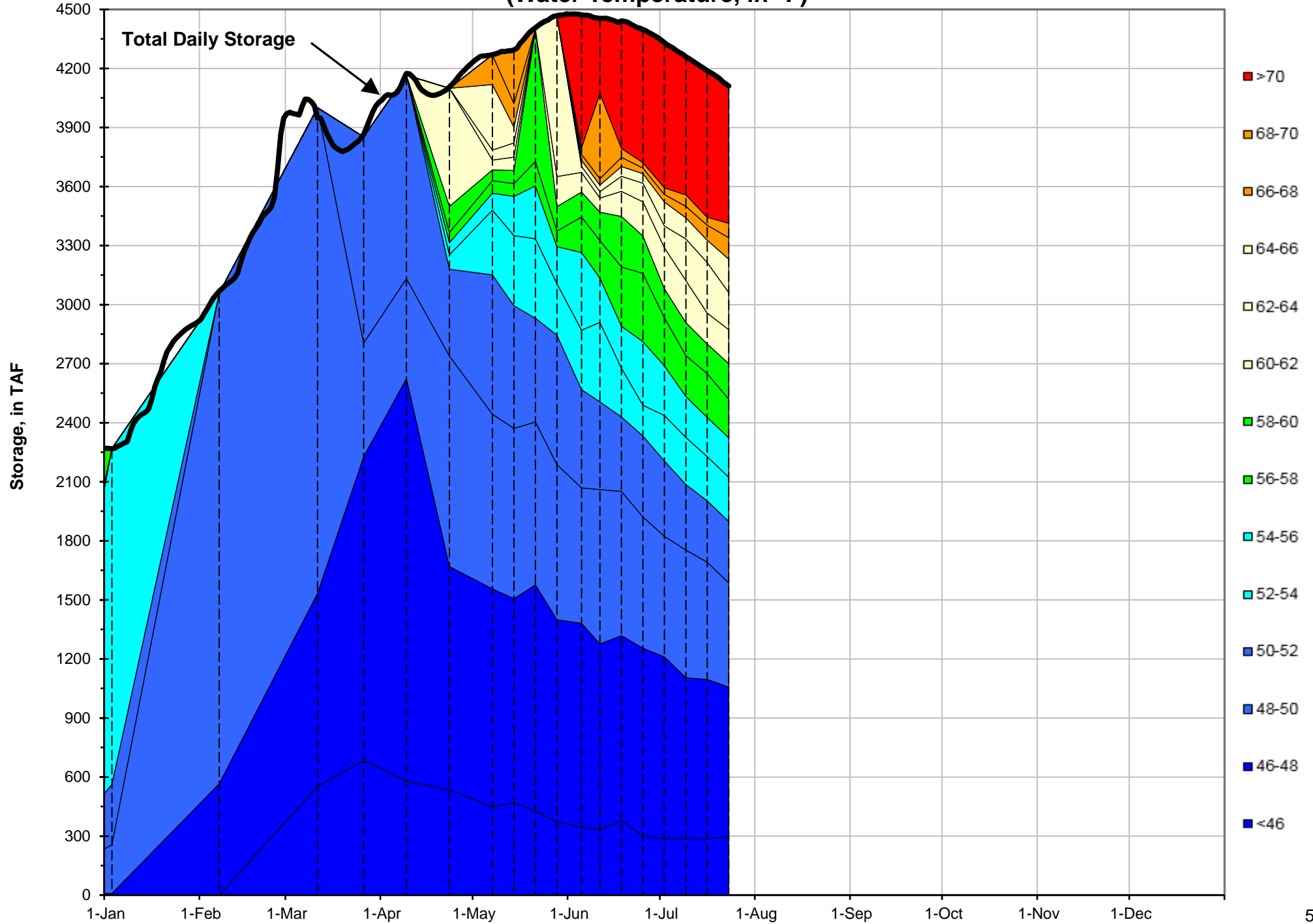
Notes

¹ 7DADM = 7-Day Average
Daily Maximum

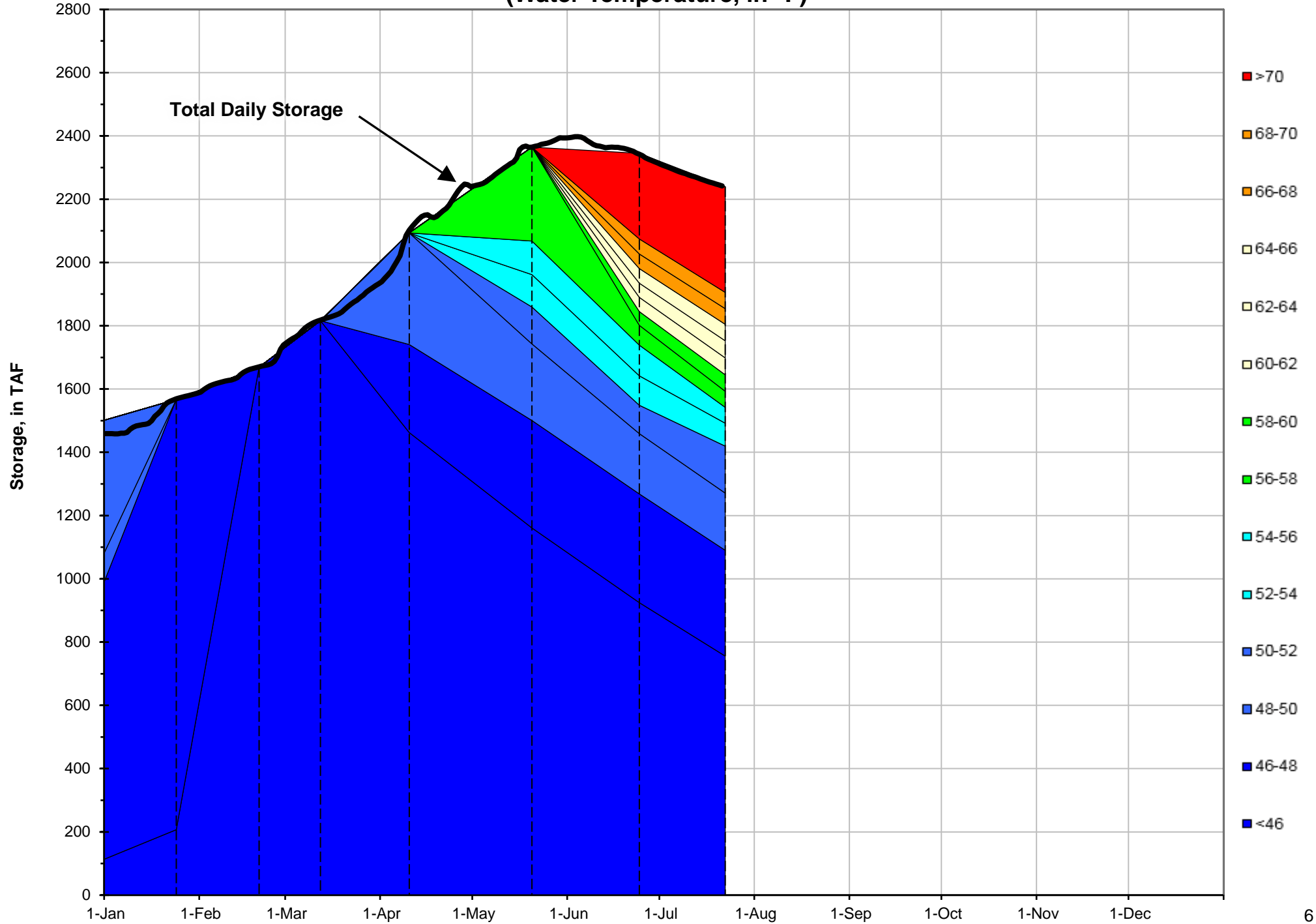
² DAT = Daily Average
Temperature



Shasta Lake Isothermobaths - 2019 (Water Temperature, in °F)



Trinity Lake Isothermobaths - 2019 (Water Temperature, in °F)



Whiskeytown Lake Isothermobaths - 2019 (Water Temperature, in °F)

