

# Northern CVP Water Temperature Report

## July - 2018

Page	Description
1	- Mean Daily Water Temperature, Release Flow Rates and Air Temperatures with Monthly Averages
2	- Redding 10-Day Forecasted Air Temperatures
3	- Sacramento River Mean Daily Water Temperature, Air Temperature and 10-Day Forecasted Air Temperature Plot - Water Temperature Measuring Station Details - Temperature Control Point Details
4	- Daily Maximum and 7DADM
5	- Shasta Lake Isothermobaths Plot
6	- Trinity Lake Isothermobaths Plot
7	- Whiskeytown Lake Isothermobaths Plot
x	- <a href="#">TCD Configuration</a> (External Link)



All Data in this Report is Preliminary and Subject to Change

DATE	Mean Daily Water Temperatures (°F)													Mean Daily Release (CFS)			Mean Daily Air Temperatures (°F)				
	TCD <sup>1</sup>	SHD	SPP <sup>1</sup>	KWK	SAC	CCR	BSF <sup>2</sup>	JLF	BND	RDB	IGO	LWS	----- <sup>3</sup>	Shasta Generation	Spring Creek P.P.	Keswick Total	RDD	BSF	RDB	LWS	
Jun	50.9	49.9	51.8	51.7	52.2	52.9	54.9	56.4	56.8	58.5	54.9	52.2	-	8951	1220	10632	79.4	75.6	76.5	67.9	
07/01	50.1	49.7	53.9	51.3	51.7	52.5	54.4	55.8	56.2	58.2	58.9	54.4	-	10741	1526	12674	95.0	88.8	89.0	75.5	
07/02	50.2	49.7	54.2	51.3	51.8	52.5	54.4	55.8	56.1	58.0	59.2	53.9	-	10357	1697	12667	92.5	83.9	84.1	75.8	
07/03	50.3	49.8	54.3	51.6	52.0	52.6	54.2	55.5	55.9	57.7	58.6	53.3	-	9606	2160	12725	85.0	81.5	79.2	71.4	
07/04	50.2	49.7	54.4	51.5	51.8	52.5	54.2	55.6	55.8	57.6	58.5	53.3	-	9857	1812	13129	77.5	73.7	73.0	67.8	
07/05	50.4	? 49.9	54.6	? 51.2	51.6	? 52.2	? 53.9	? 55.2	? 55.5	? 57.2	? 58.4	53.2	-	10042	1715	13029	74.5	72.4	73.4	69.3	
07/06	50.7	50.1	54.5	51.3	51.5	52.0	53.2	54.2	54.5	56.1	57.7	? 52.7	-	11908	1510	13076	78.5	73.8	73.8	68.5	
07/07	? 50.5	50.0	54.6	51.3	51.7	52.2	53.5	54.5	54.6	55.7	58.9	53.2	-	11196	1213	13093	79.0	73.7	75.9	70.4	
07/08	? 50.5	? 50.0	54.6	? 51.5	? 52.0	? 52.6	? 54.0	? 55.0	? 55.1	? 56.6	? 59.1	? 53.7	-	10696	1850	13089	80.0	77.2	78.6	74.4	
07/09	50.8	50.2	54.7	51.7	52.1	52.7	54.2	55.4	55.6	57.3	59.1	53.9	-	10666	1774	13090	82.0	77.9	79.0	71.6	
07/10	50.7	50.2	54.9	52.0	52.4	53.0	54.5	55.7	56.0	57.7	59.5	54.1	-	9752	2290	13092	82.5	79.9	82.6	72.5	
07/11	50.8	50.2	54.9	52.0	52.4	53.1	54.8	56.0	56.2	58.1	59.6	54.6	-	10448	1818	13084	84.5	79.5	80.0	76.3	
07/12	51.0	50.4	55.1	51.7	52.2	52.8	54.6	55.9	56.1	58.1	59.6	54.7	-	10538	1144	13064	87.0	80.9	82.3	79.3	
07/13	51.2	50.5	55.1	51.9	52.2	52.6	54.0	55.2	55.4	57.4	59.0	53.5	-	11418	1516	12990	85.0	77.8	78.8	77.5	
07/14	51.3	50.6	55.1	51.9	52.4	53.0	54.5	55.6	55.7	57.3	59.9	55.0	-	11365	1034	13037	88.0	83.1	83.4	82.4	
07/15	51.1	50.5	55.2	52.3	52.7	53.2	55.0	56.3	56.6	58.6	60.4	53.8	-	10204	1694	13139	90.0	84.0	83.1	77.8	
07/16	50.9	50.5	55.3	52.2	52.7	53.4	55.2	56.6	56.9	58.9	58.4	54.5	-	10842	1763	13137	91.5	85.2	84.2	79.3	
07/17	51.0	50.7	55.4	52.1	52.8	53.4	55.2	56.5	56.8	58.8	57.8	54.4	-	10423	1689	13127	90.5	84.8	84.0	81.9	
07/18	51.3	50.8	55.4	52.3	52.9	53.5	55.1	56.3	56.6	58.6	57.8	54.0	-	10622	1674	13125	90.5	84.2	85.0	80.5	
07/19	51.1	50.7	55.5	52.5	53.0	53.6	55.2	56.4	56.7	58.6	57.8	53.8	-	10729	1954	13138	90.5	85.2	85.1	79.4	
07/20	51.1	50.8	55.6	52.3	52.9	53.4	55.2	56.5	56.8	58.9	57.7	54.3	-	10402	1746	13128	88.0	82.1	81.9	78.4	
07/21	51.5	51.0	55.7	52.3	52.9	53.5	55.0	56.3	56.5	58.4	57.4	54.4	-	10897	1675	13127	84.0	79.3	79.8	77.4	
07/22	51.3	50.9	55.7	52.6	53.2	53.7	55.3	56.6	56.9	58.9	57.8	54.1	-	9641	2034	13116	88.5	83.8	83.6	79.3	
07/23	51.0	51.0	55.8	52.4	53.1	53.7	55.6	57.0	57.3	59.4	58.1	54.6	-	11613	1153	13135	91.5	86.0	84.9	81.0	
07/24	50.8	50.9	55.9	52.4	53.1	53.6	55.4	56.8	57.1	59.3	58.2	54.0	-	10821	1682	13132	93.0	86.7	86.0	81.8	
07/25	? 50.6	51.0	55.9	52.3	52.9	53.5	55.3	56.6	57.0	59.1	57.5	53.9	-	10959	1062	13122	92.0	87.8	87.6	80.9	
07/26	? 50.6	51.1	? 56.5	52.0	52.5	53.1	54.6	55.8	56.2	58.0	57.6	52.7	-	11385	14	13102	↑ 94.5	84.7	84.7	80.3	
07/27	# -	51.4	# -	51.9	52.4	52.8	54.3	55.7	56.1	57.8	57.5	52.5	-	-	-	-	87.5	81.8	80.4	79.0	
07/28	# -	51.0	# -	51.9	52.2	52.6	53.6	54.5	54.9	56.8	57.5	53.4	-	-	-	-	85.5	78.3	81.0	76.8	
07/29	# -	49.3	# -	51.2	51.8	52.4	54.0	? 55.1	55.3	56.5	56.9	52.6	-	-	-	-	86.5	80.2	80.9	73.9	
07/30	50.8	49.8	# -	49.8	50.2	50.7	52.2	53.4	54.0	56.2	57.2	52.8	-	-	-	-	88.0	80.0	80.1	75.5	
07/31	52.3	51.1	# -	50.2	50.5	50.9	52.1	53.2	53.5	54.9	57.1	52.9	-	7913	-	12872	86.5	80.0	79.8	74.7	
Jul	50.9	50.4	55.1	51.8	52.2	52.8	54.4	55.6	55.9	57.8	58.3	53.7	-	10557	1585	13046	86.8	81.2	81.5	76.5	
														Total CFS	285041	41199	352239				
														Total AF	565367	81717	698652				

Legend

- ? = 1-9 hours of data missing (Average includes estimations)
- ! = 10 or more hours of data missing (Average not calculated)
- # = Station out of service
- ↑ = Record high air temperature
- ↓ = Record low air temperature
- = Monthly Averages

Notes

- <sup>1</sup> Temperatures are weighted averages based on individual penstock flow and temperature
- Highlighted cells in the TCD column indicate a TCD change was made on that day
- <sup>2</sup> Current control point (see page 3 for more details)
- <sup>3</sup> Column not used this month

D A T E	Redding (RDD) Daily Air Temperatures (°F)																																			
	Actual			Forecasted																																
	Previous Day			Current Day			1 Day			2 Days			3 Days			4 Days			5 Days			6 Days			7 Days			8 Days			9 Days			10 Days		
	↓	↑	Avg	↓	↑	Avg	↓	↑	Avg	↓	↑	Avg	↓	↑	Avg	↓	↑	Avg	↓	↑	Avg	↓	↑	Avg	↓	↑	Avg	↓	↑	Avg	↓	↑	Avg	↓	↑	Avg
07/01	75	105	90.0	79	106	92.5	69	102	85.5	65	96	80.5	63	91	77.0	60	92	76.0	62	94	78.0	63	96	79.5	66	99	82.5	67	97	82.0	67	95	81.0	67	96	81.5
07/02	80	110	95.0	80	102	91.0	67	97	82.0	64	93	78.5	60	93	76.5	62	92	77.0	62	97	79.5	64	100	82.0	70	104	87.0	70	105	87.5	69	100	84.5	69	101	85.0
07/03	79	106	92.5	74	97	85.5	65	91	78.0	60	92	76.0	64	92	78.0	62	99	80.5	65	99	82.0	66	99	82.5	69	102	85.5	68	102	85.0	68	98	83.0	67	99	83.0
07/04	74	96	85.0	66	93	79.5	61	94	77.5	64	92	78.0	62	100	81.0	66	103	84.5	69	105	87.0	69	106	87.5	72	105	88.5	69	103	86.0	68	99	83.5	67	99	83.0
07/05	66	89	77.5	58	92	75.0	64	92	78.0	62	98	80.0	65	100	82.5	67	101	84.0	70	102	86.0	69	102	85.5	69	106	87.5	70	103	86.5	71	100	85.5	69	100	84.5
07/06	57	92	74.5	67	92	79.5	65	98	81.5	66	98	82.0	67	100	83.5	68	103	85.5	70	102	86.0	69	103	86.0	72	106	89.0	72	104	88.0	73	101	87.0	70	101	85.5
07/07	65	92	78.5	59	98	78.5	66	99	82.5	67	100	83.5	66	101	83.5	69	103	86.0	71	101	86.0	71	101	86.0	73	106	89.5	72	103	87.5	72	99	85.5	69	100	84.5
07/08	59	99	79.0	61	99	80.0	67	100	83.5	67	102	84.5	69	104	86.5	72	103	87.5	72	102	87.0	73	105	89.0	75	110	92.5	73	104	88.5	73	100	86.5	70	100	85.0
07/09	61	99	80.0	65	100	82.5	67	102	84.5	69	105	87.0	72	105	88.5	73	106	89.5	73	107	90.0	73	106	89.5	75	106	90.5	72	104	88.0	72	101	86.5	70	101	85.5
07/10	63	101	82.0	63	103	83.0	68	106	87.0	71	106	88.5	74	105	89.5	74	105	89.5	73	105	89.0	72	104	88.0	71	106	88.5	70	105	87.5	71	99	85.0	68	98	83.0
07/11	63	102	82.5	65	106	85.5	70	108	89.0	73	104	88.5	73	105	89.0	73	107	90.0	71	103	87.0	69	103	86.0	73	109	91.0	73	105	89.0	73	102	87.5	70	100	85.0
07/12	65	104	84.5	70	107	88.5	73	102	87.5	73	107	90.0	74	109	91.5	74	107	90.5	72	104	88.0	69	104	86.5	72	107	89.5	71	104	87.5	70	100	85.0	68	100	84.0
07/13	67	107	87.0	72	103	87.5	73	108	90.5	73	108	90.5	74	110	92.0	72	107	89.5	71	105	88.0	69	102	85.5	72	105	88.5	73	102	87.5	73	101	87.0	70	102	86.0
07/14	72	98	85.0	71	105	88.0	74	107	90.5	73	109	91.0	72	109	90.5	71	105	88.0	70	101	85.5	68	99	83.5	70	104	87.0	73	105	89.0	72	103	87.5	70	103	86.5
07/15	70	106	88.0	77	107	92.0	74	108	91.0	73	110	91.5	72	106	89.0	70	104	87.0	68	102	85.0	69	102	85.5	72	105	88.5	70	105	87.5	70	101	85.5	68	99	83.5
07/16	75	105	90.0	77	107	92.0	75	111	93.0	76	112	94.0	75	108	91.5	72	106	89.0	70	102	86.0	68	101	84.5	71	104	87.5	71	105	88.0	70	101	85.5	68	100	84.0
07/17	75	108	91.5	73	111	92.0	77	113	95.0	76	109	92.5	75	103	89.0	69	102	85.5	69	101	85.0	68	100	84.0	70	104	87.0	69	105	87.0	70	101	85.5	68	101	84.5
07/18	72	109	90.5	73	110	91.5	73	108	90.5	71	102	86.5	70	102	86.0	70	104	87.0	69	106	87.5	71	106	88.5	74	110	92.0	73	108	90.5	72	103	87.5	68	101	84.5
07/19	72	109	90.5	73	109	91.0	71	103	87.0	69	102	85.5	70	102	86.0	70	106	88.0	70	106	88.0	71	106	88.5	74	111	92.5	73	108	90.5	73	103	88.0	69	102	85.5
07/20	72	109	90.5	74	103	88.5	68	102	85.0	70	103	86.5	70	107	88.5	70	109	89.5	70	108	89.0	69	107	88.0	71	106	88.5	70	104	87.0	69	100	84.5	67	99	83.0
07/21	72	104	88.0	69	101	85.0	70	101	85.5	70	107	88.5	70	108	89.0	71	109	90.0	70	108	89.0	69	106	87.5	71	105	88.0	69	104	86.5	68	100	84.0	68	100	84.0
07/22	67	101	84.0	75	102	88.5	71	106	88.5	71	108	89.5	71	108	89.5	70	108	89.0	69	107	88.0	69	105	87.0	71	105	88.0	69	105	87.0	70	101	85.5	68	101	84.5
07/23	74	103	88.5	77	106	91.5	74	108	91.0	75	109	92.0	73	109	91.0	71	107	89.0	69	105	87.0	68	103	85.5	71	106	88.5	70	105	87.5	70	100	85.0	68	100	84.0
07/24	77	106	91.5	78	107	92.5	77	110	93.5	76	110	93.0	71	108	89.5	69	108	88.5	68	106	87.0	67	104	85.5	70	105	87.5	69	104	86.5	68	98	83.0	66	98	82.0
07/25	78	108	93.0	76	109	92.5	73	111	92.0	72	108	90.0	69	107	88.0	70	107	88.5	69	105	87.0	66	102	84.0	69	104	86.5	68	104	86.0	69	102	85.5	68	100	84.0
07/26	73	111	92.0	77	112	94.5	74	111	92.5	70	109	89.5	69	109	89.0	69	105	87.0	68	103	85.5	67	103	85.0	68	105	86.5	69	104	86.5	69	100	84.5	67	99	83.0
07/27	76	<b>113</b>	94.5	73	110	91.5	71	110	90.5	70	109	89.5	71	107	89.0	70	105	87.5	68	104	86.0	66	103	84.5	69	102	85.5	68	102	85.0	68	100	84.0	68	101	84.5
07/28	72	103	87.5	72	109	90.5	70	109	89.5	70	107	88.5	70	105	87.5	67	102	84.5	65	102	83.5	65	102	83.5	67	101	84.0	66	104	85.0	68	101	84.5	68	101	84.5
07/29	72	99	85.5	70	101	85.5	70	106	88.0	70	105	87.5	70	104	87.0	67	100	83.5	64	101	82.5	64	100	82.0	67	101	84.0	66	104	85.0	67	100	83.5	66	99	82.5
07/30	69	104	86.5	72	103	87.5	69	104	86.5	68	102	85.0	65	100	82.5	65	102	83.5	65	102	83.5	65	100	82.5	66	101	83.5	65	99	82.0	66	96	81.0	65	96	80.5
07/31	73	103	88.0	72	102	87.0	68	103	85.5	65	102	83.5	65	101	83.0	65	98	81.5	63	96	79.5	63	94	78.5	66	92	79.0	65	93	79.0	66	94	80.0	64	96	80.0

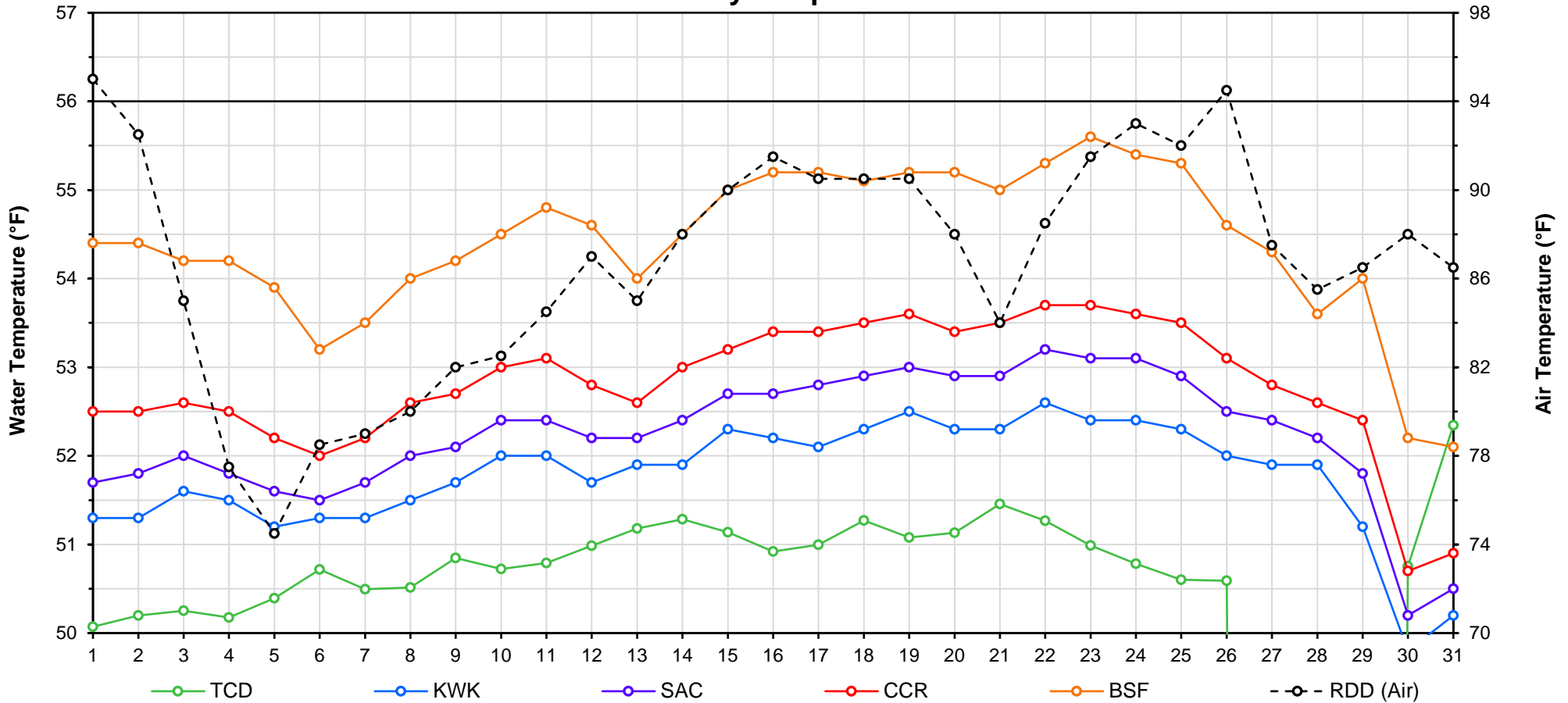
Web Links

- [10-Day Min/Max Forecast](#)
- [Previous Days Min/Max Actuals](#)

Legend

- NR = Forecasted temperatures not recorded
- 100** = Previous day actual temperatures in red and bolded indicate a record temperature for that date

# Mean Daily Temperatures



Station Details			
Code	Body of Water	Location <sup>1</sup>	CDEC Link
TCD	N/A	Shasta Power Plant	N/A
SHD	Sacramento River	0.3 miles downstream of Shasta Power Plant	<a href="#">Click Here</a>
SPP	N/A	Spring Creek Power Plant	N/A
KWK	Sacramento River	0.8 miles downstream of Keswick Dam	<a href="#">Click Here</a>
SAC	Sacramento River	4.8 miles downstream of Keswick Dam	<a href="#">Click Here</a>
CCR	Sacramento River	9.7 miles downstream of Keswick Dam	<a href="#">Click Here</a>
BSF	Sacramento River	25 miles downstream of Keswick Dam	<a href="#">Click Here</a>
JLF	Sacramento River	34 miles downstream of Keswick Dam	<a href="#">Click Here</a>
BND	Sacramento River	41 miles downstream of Keswick Dam	<a href="#">Click Here</a>
RDB	Sacramento River	58 miles downstream of Keswick Dam	<a href="#">Click Here</a>
IGO	Clear Creek	7.3 miles downstream of Whiskeytown Dam	<a href="#">Click Here</a>
LWS	Trinity River	1.1 miles downstream of Lewiston Dam	<a href="#">Click Here</a>
DGC <sup>2</sup>	Trinity River	19 miles downstream of Lewiston Dam	<a href="#">Click Here</a>
NFH <sup>3</sup>	Trinity River	38 miles downstream of Lewiston Dam	<a href="#">Click Here</a>

Temperature Control Point		
Point	Temp. (°F)	Begin Date
<b>BSF</b>	<b>56.0</b>	<b>05/25/2018</b>

## Notes

<sup>1</sup> Distances are approximate

<sup>2</sup> DGC is only reported in September

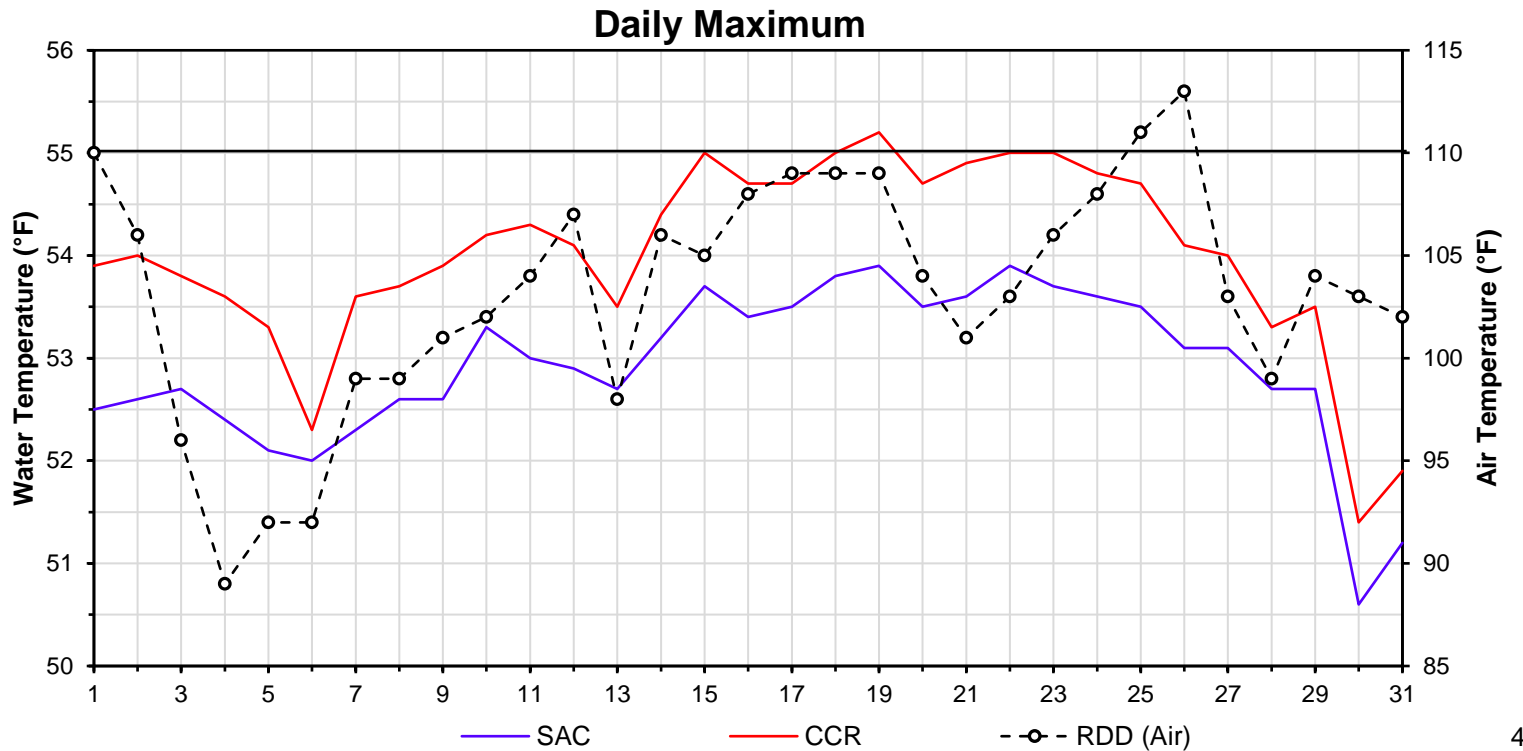
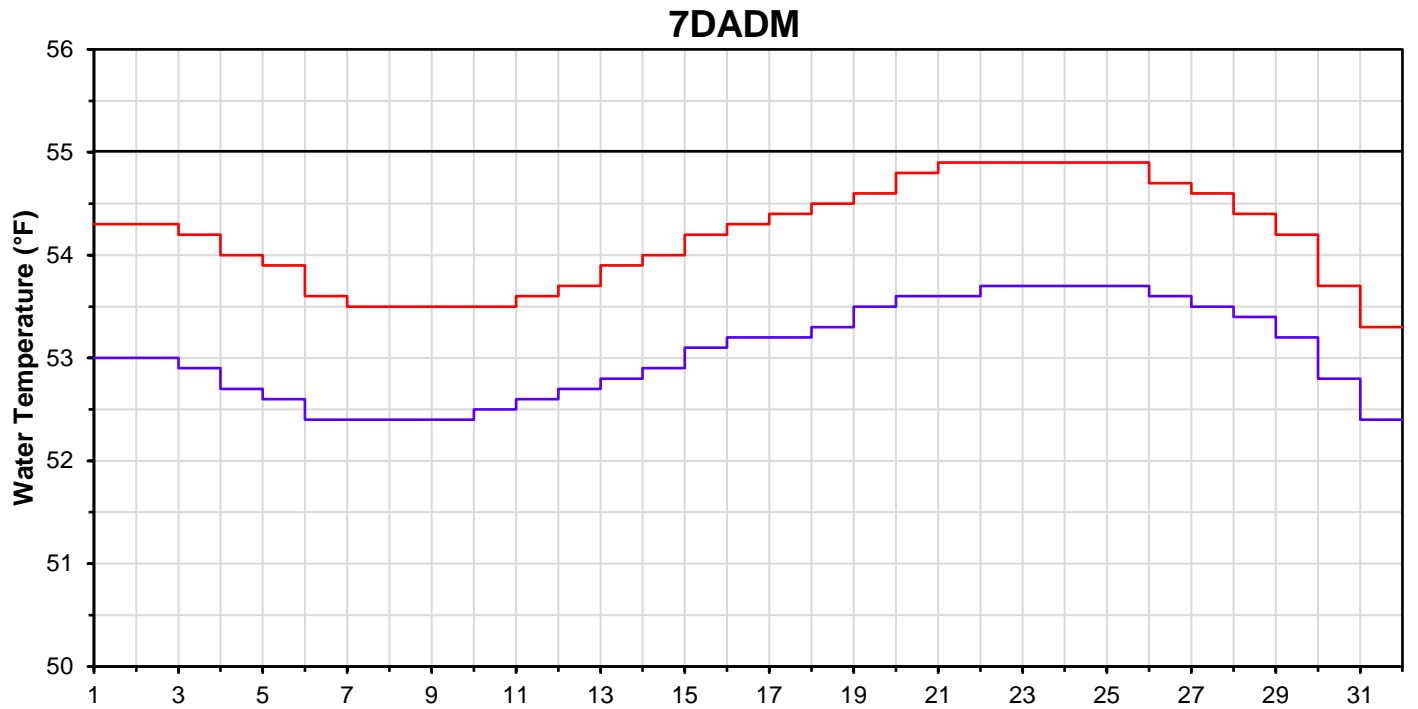
<sup>3</sup> NFH is only reported in October, November and December

DATE	Daily Max		7DADM <sup>1</sup>		DAT <sup>2</sup>
	SAC	CCR	SAC	CCR	BSF
07/01	52.5	53.9	53.0	54.3	54.4
07/02	52.6	54.0	53.0	54.3	54.4
07/03	52.7	53.8	52.9	54.2	54.2
07/04	52.4	53.6	52.7	54.0	54.2
07/05	52.1	53.3	52.6	53.9	53.9
07/06	52.0	52.3	52.4	53.6	53.2
07/07	52.3	53.6	52.4	53.5	53.5
07/08	52.6	53.7	52.4	53.5	54.0
07/09	52.6	53.9	52.4	53.5	54.2
07/10	53.3	54.2	52.5	53.5	54.5
07/11	53.0	54.3	52.6	53.6	54.8
07/12	52.9	54.1	52.7	53.7	54.6
07/13	52.7	53.5	52.8	53.9	54.0
07/14	53.2	54.4	52.9	54.0	54.5
07/15	53.7	55.0	53.1	54.2	55.0
07/16	53.4	54.7	53.2	54.3	55.2
07/17	53.5	54.7	53.2	54.4	55.2
07/18	53.8	55.0	53.3	54.5	55.1
07/19	53.9	55.2	53.5	54.6	55.2
07/20	53.5	54.7	53.6	54.8	55.2
07/21	53.6	54.9	53.6	54.9	55.0
07/22	53.9	55.0	53.7	54.9	55.3
07/23	53.7	55.0	53.7	54.9	55.6
07/24	53.6	54.8	53.7	54.9	55.4
07/25	53.5	54.7	53.7	54.9	55.3
07/26	53.1	54.1	53.6	54.7	54.6
07/27	53.1	54.0	53.5	54.6	54.3
07/28	52.7	53.3	53.4	54.4	53.6
07/29	52.7	53.5	53.2	54.2	54.0
07/30	50.6	51.4	52.8	53.7	52.2
07/31	51.2	51.9	52.4	53.3	52.1

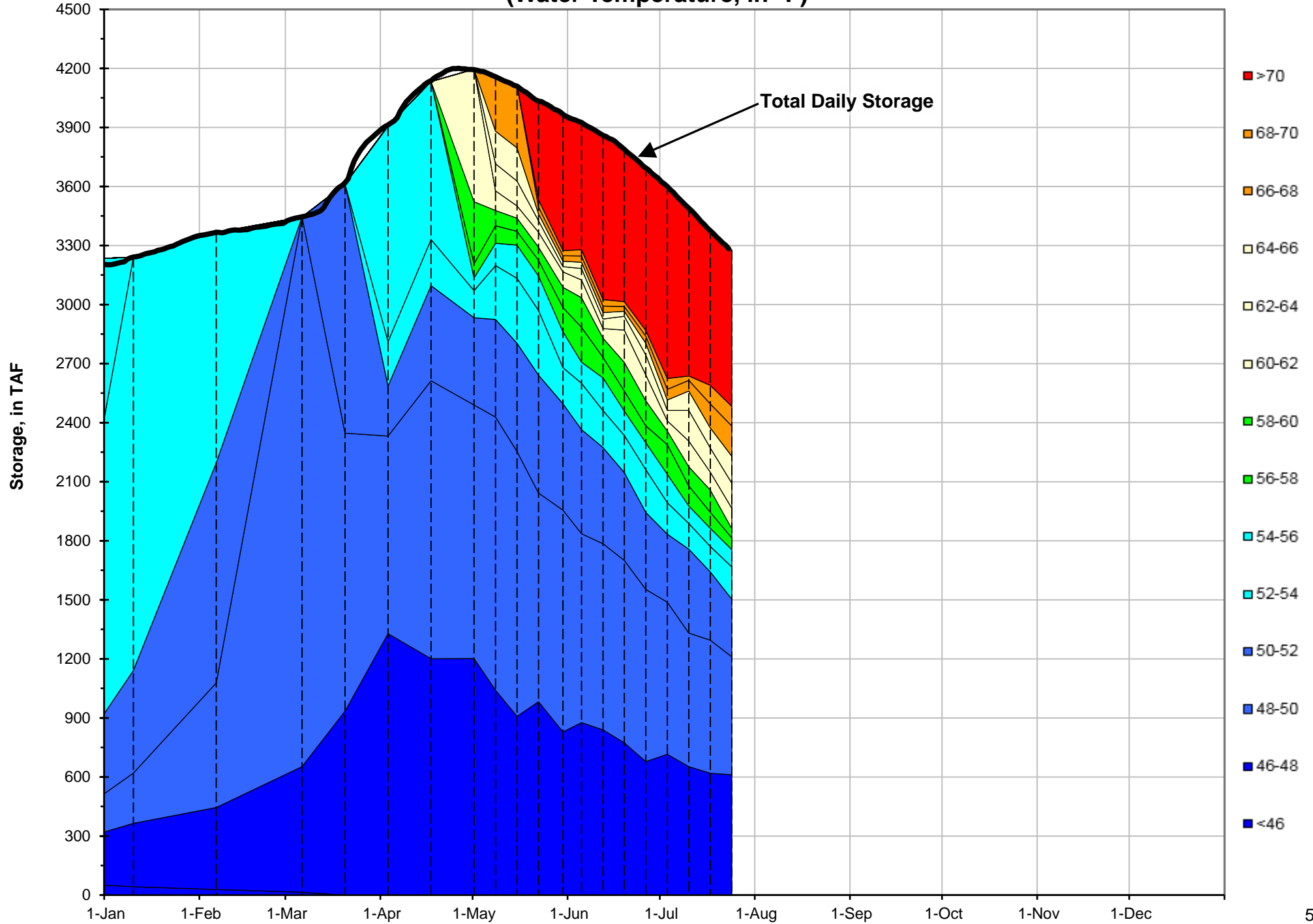
**Notes**

<sup>1</sup> 7DADM = 7-Day Average  
Daily Maximum

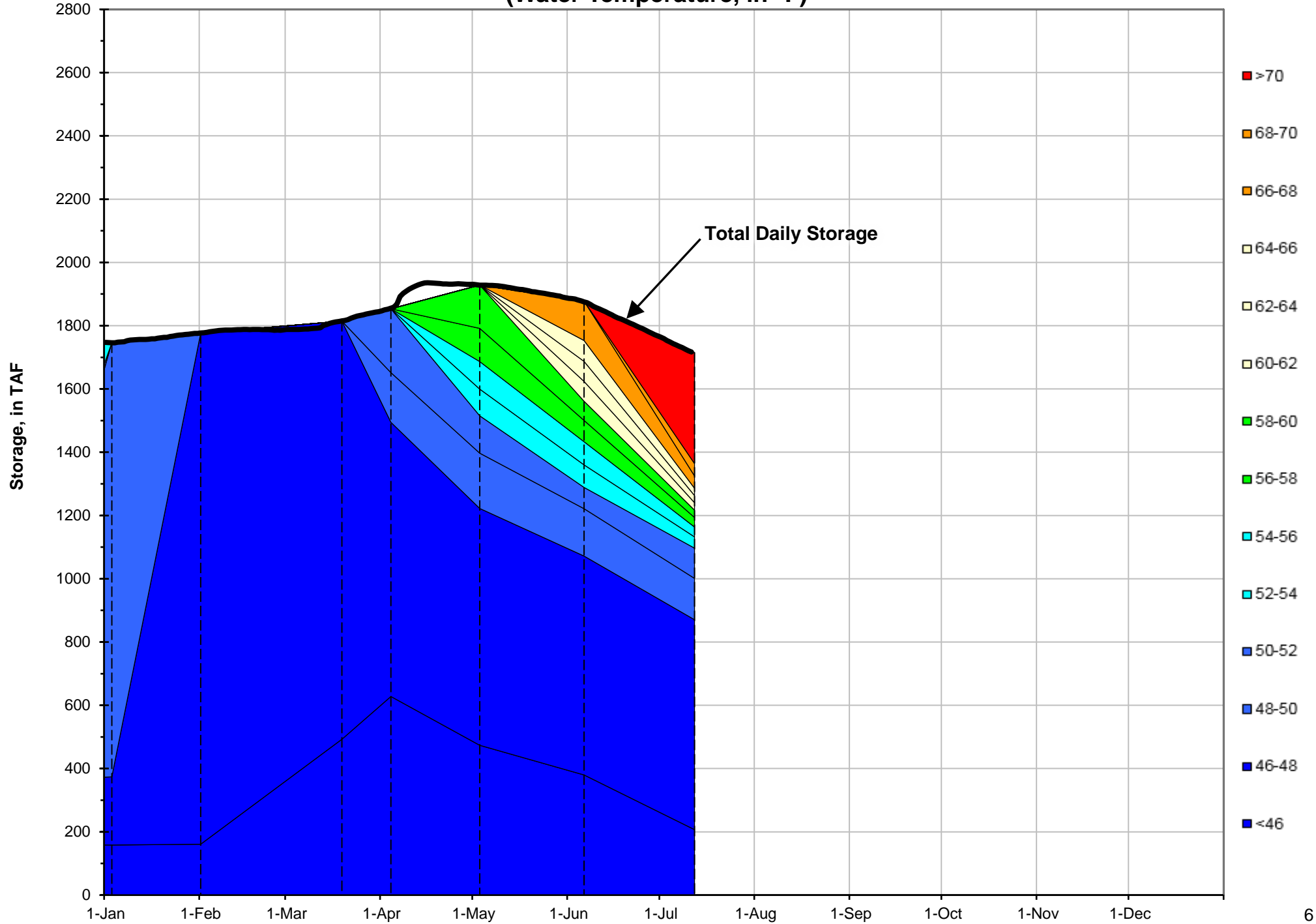
<sup>2</sup> DAT = Daily Average  
Temperature



### Shasta Lake Isothermobaths - 2018 (Water Temperature, in °F)



### Trinity Lake Isothermobaths - 2018 (Water Temperature, in °F)



### Whiskeytown Lake Isothermobaths - 2018 (Water Temperature, in °F)

