

Northern CVP Water Temperature Report

July - 2017

Page	Description
1	- Mean Daily Water Temperature, Release Flow Rates and Air Temperatures with Monthly Averages
2	- Redding 10-Day Forecasted Air Temperatures
3	- Sacramento River Mean Daily Water Temperature, Air Temperature and 10-Day Forecasted Air Temperature Plot
	- Water Temperature Measuring Station Details
	- Temperature Control Point Details
4	- Lake Shasta Isothermalbaths Plot
5	- Daily Maximum and 7DADM
x	- TCD Configuration (External Link)



All Data in this Report is Preliminary and Subject to Change

DATE	Mean Daily Water Temperatures (°F)													Mean Daily Release (CFS)			Mean Daily Air Temperatures (°F)			
	TCD ¹	SHD	SPP ¹	KWK	SAC	CCR	BSF ²	JLF	BND	RDB	IGO	LWS	----- ³	Shasta Generation	Spring Creek P.P.	Keswick Total	RDD	BSF	RDB	LWS
Jun	50.6	49.6	51.3	51.3	51.8	52.5	54.8	56.8	57.3	59.1	54.3	47.3	-	8114	1740	9813	80.5	76.3	77.0	67.4
07/01	50.7	? 49.3	52.2	51.2	51.8	52.5	54.9	57.1	57.5	59.7	56.5	48.1	-	7960	2013	9402	85.5	81.3	78.9	73.0
07/02	50.7	49.4	52.3	51.2	51.8	52.6	55.0	57.2	? 57.6	59.9	56.6	48.4	-	7912	1652	9483	87.0	81.3	80.4	75.1
07/03	50.7	? 49.3	52.4	51.4	52.0	52.7	55.1	57.3	57.6	59.9	56.8	48.4	-	8119	1771	9471	84.5	79.5	79.1	75.5
07/04	50.6	49.4	52.4	51.3	51.9	52.6	54.9	57.0	57.4	59.7	56.5	48.5	-	8102	1604	9474	83.5	78.2	79.9	74.3
07/05	50.6	49.4	52.4	51.3	51.9	52.6	54.8	56.7	57.1	59.3	56.2	48.6	-	7764	1744	9463	81.0	76.4	78.0	73.0
07/06	50.7	49.4	52.5	51.3	51.8	52.5	54.7	56.6	57.0	59.2	56.4	48.8	-	8154	1729	9426	86.0	80.8	81.5	74.6
07/07	50.6	49.4	52.6	51.4	51.9	52.6	54.8	56.7	57.2	59.3	56.7	48.5	-	8556	1807	9641	90.0	84.5	85.8	74.3
07/08	50.7	49.4	52.7	51.2	51.8	52.5	54.8	56.7	57.2	59.4	56.5	48.5	-	8315	1312	10160	87.5	82.2	84.6	74.3
07/09	50.7	49.4	52.7	51.3	51.9	52.6	54.8	56.6	57.0	59.3	56.6	48.7	-	8292	1570	10136	87.5	80.9	81.0	76.3
07/10	50.7	49.5	52.8	51.3	51.8	52.5	54.7	56.5	57.0	59.2	56.7	48.7	-	8535	1497	9825	85.0	80.6	81.4	75.2
07/11	50.8	49.5	53.0	51.4	51.9	52.6	54.9	56.8	57.2	59.4	56.8	49.0	-	8560	1526	9595	85.5	80.1	80.2	74.7
07/12	50.8	49.5	52.9	51.5	52.0	52.8	54.9	56.7	57.2	59.4	56.7	49.1	-	7931	1517	9710	84.5	79.3	79.6	75.2
07/13	50.8	49.7	53.2	51.6	52.1	52.8	54.9	56.8	57.3	59.5	56.7	49.0	-	7596	2135	9879	83.5	79.7	80.0	74.3
07/14	50.7	49.6	53.2	51.6	52.2	52.9	55.1	56.8	57.3	59.4	56.7	49.0	-	8306	1798	9887	86.5	79.8	80.4	74.6
07/15	50.6	49.6	53.4	51.6	52.1	52.8	55.0	56.8	57.2	59.5	56.9	48.9	-	8269	1691	9921	87.0	83.0	83.5	75.0
07/16	50.6	49.6	53.4	51.6	52.2	53.0	55.2	56.9	57.3	59.5	57.0	49.0	-	7978	1563	9844	90.0	83.5	86.1	72.9
07/17	50.7	49.7	53.4	51.6	52.2	52.9	55.0	56.7	57.2	59.4	56.8	49.0	-	8594	1729	9699	85.0	79.9	83.2	72.5
07/18	50.8	49.8	53.6	51.8	52.3	52.9	54.9	56.6	57.3	59.2	56.6	49.1	-	7362	2268	9860	80.5	76.3	76.9	70.3
07/19	50.7	49.7	53.7	51.9	52.4	53.0	55.0	56.5	57.2	58.9	56.5	49.0	-	7518	2082	9873	81.0	75.6	76.4	69.9
07/20	50.6	49.6	53.7	51.7	52.3	53.0	55.0	56.6	57.3	59.0	56.7	48.4	-	8532	1424	9871	82.0	77.6	78.2	71.1
07/21	50.6	49.7	53.9	51.5	52.1	52.7	54.9	56.5	57.2	59.1	58.3	49.0	-	8756	1212	9844	85.0	81.1	81.3	71.6
07/22	50.6	49.7	53.8	51.6	52.1	52.8	54.9	56.6	57.3	59.2	58.8	49.3	-	8495	1356	9770	88.5	82.7	81.9	75.0
07/23	50.8	49.8	53.9	51.4	51.9	52.7	54.9	56.6	57.3	59.3	58.6	49.4	-	8536	707	9776	88.5	81.8	82.8	76.1
07/24	50.8	49.9	53.9	51.5	52.0	52.6	54.6	56.3	57.0	58.9	58.4	49.3	-	8569	1371	9725	86.5	80.0	80.1	74.2
07/25	50.8	49.9	54.0	51.5	52.0	52.8	54.9	56.5	57.2	58.9	58.3	49.3	-	9257	666	9611	84.5	79.4	78.5	74.7
07/26	50.8	49.9	54.1	51.5	52.0	52.6	54.7	56.3	57.0	58.9	58.5	49.7	-	9202	875	9499	83.5	78.9	78.9	74.9
07/27	50.5	49.9	54.0	51.7	52.2	52.8	54.8	56.4	57.1	58.9	59.0	49.8	-	8443	1402	9579	87.0	81.2	82.8	76.4
07/28	50.1	? 49.4	54.0	51.9	52.5	53.1	55.1	56.7	57.4	59.2	59.2	49.9	-	7477	1909	9434	88.5	81.9	82.5	75.3
07/29	50.0	49.4	53.9	51.4	52.1	52.8	55.0	56.7	57.4	59.4	59.0	49.7	-	9135	1499	9276	86.5	81.0	80.5	76.8
07/30	49.9	49.1	54.1	51.2	51.7	52.3	54.4	56.0	56.8	58.8	58.7	49.8	-	8649	1253	9353	87.0	81.0	81.2	77.3
07/31	50.0	49.1	54.1	51.0	51.5	52.1	54.1	55.8	56.4	58.3	58.9	50.2	-	8693	1395	9428	88.0	81.7	80.5	79.1
Jul	50.6	49.5	53.3	51.5	52.0	52.7	54.9	56.6	57.2	59.3	57.4	49.0	-	8309	1551	9675	85.7	80.4	80.8	74.4

Total CFS	257567	48077	299915
Total AF	510874	95359	594869

Legend

- ? = 1-9 hours of data missing (Average includes estimations)
- ! = 10 or more hours of data missing (Average not calculated)
- # = Station out of service
- ↑ = Record high air temperature
- ↓ = Record low air temperature
- ☐ = Monthly Averages

Notes

- ¹ Temperatures are weighted averages based on individual penstock flow and temperature
- Highlighted cells in the TCD column indicate a TCD change was made on that day
- ² Current control point (see page 3 for more details)
- ³ Column not used this month

D A T E	Redding (RDD) Daily Air Temperatures (°F)																																			
	Actual			Forecasted																																
	Previous Day			Current Day			1 Day			2 Days			3 Days			4 Days			5 Days			6 Days			7 Days			8 Days			9 Days			10 Days		
	↓	↑	Avg	↓	↑	Avg	↓	↑	Avg	↓	↑	Avg	↓	↑	Avg	↓	↑	Avg	↓	↑	Avg	↓	↑	Avg	↓	↑	Avg	↓	↑	Avg	↓	↑	Avg	↓	↑	Avg
07/01	69	102	85.5	69	102	85.5	69	104	86.5	68	100	84.0	66	98	82.0	65	98	81.5	65	100	82.5	66	102	84.0	66	99	82.5	66	103	84.5	66	101	83.5	67	99	83.0
07/02	69	102	85.5	71	103	87.0	68	101	84.5	66	99	82.5	64	98	81.0	65	99	82.0	65	100	82.5	66	101	83.5	68	100	84.0	67	98	82.5	65	98	81.5	67	99	83.0
07/03	71	103	87.0	69	101	85.0	66	100	83.0	64	98	81.0	63	99	81.0	65	100	82.5	67	103	85.0	68	102	85.0	67	100	83.5	68	98	83.0	67	96	81.5	66	97	81.5
07/04	69	100	84.5	67	99	83.0	63	98	80.5	64	101	82.5	65	102	83.5	67	104	85.5	69	104	86.5	69	101	85.0	68	97	82.5	67	98	82.5	66	97	81.5	65	95	80.0
07/05	66	101	83.5	62	98	80.0	64	101	82.5	66	104	85.0	68	105	86.5	69	105	87.0	70	104	87.0	67	100	83.5	67	98	82.5	67	98	82.5	67	99	83.0	67	99	83.0
07/06	62	100	81.0	67	103	85.0	67	107	87.0	69	106	87.5	68	104	86.0	68	102	85.0	67	100	83.5	65	98	81.5	66	99	82.5	67	102	84.5	68	103	85.5	70	103	86.5
07/07	66	106	86.0	72	108	90.0	72	108	90.0	69	105	87.0	69	102	85.5	67	100	83.5	65	99	82.0	65	101	83.0	69	104	86.5	70	105	87.5	71	104	87.5	71	103	87.0
07/08	71	109	90.0	70	108	89.0	69	106	87.5	68	101	84.5	68	99	83.5	65	101	83.0	67	101	84.0	70	107	88.5	71	107	89.0	72	106	89.0	70	102	86.0	68	99	83.5
07/09	66	109	87.5	70	104	87.0	66	102	84.0	67	99	83.0	65	99	82.0	65	100	82.5	65	104	84.5	68	109	88.5	71	107	89.0	71	103	87.0	69	99	84.0	67	99	83.0
07/10	69	106	87.5	69	103	86.0	68	101	84.5	66	101	83.5	66	102	84.0	66	104	85.0	69	108	88.5	72	108	90.0	71	104	87.5	69	102	85.5	67	100	83.5	67	100	83.5
07/11	67	103	85.0	71	101	86.0	66	102	84.0	66	101	83.5	65	103	84.0	68	107	87.5	71	107	89.0	70	106	88.0	68	98	83.0	66	99	82.5	65	98	81.5	66	98	82.0
07/12	70	101	85.5	68	102	85.0	66	100	83.0	65	102	83.5	67	106	86.5	69	106	87.5	68	101	84.5	66	101	83.5	66	99	82.5	66	99	82.5	66	98	82.0	66	99	82.5
07/13	68	101	84.5	68	101	84.5	65	103	84.0	68	107	87.5	69	107	88.0	67	102	84.5	64	100	82.0	64	100	82.0	66	101	83.5	68	103	85.5	68	100	84.0	67	98	82.5
07/14	66	101	83.5	70	103	86.5	67	107	87.0	69	107	88.0	67	100	83.5	63	99	81.0	62	101	81.5	63	103	83.0	68	102	85.0	68	102	85.0	69	99	84.0	66	98	82.0
07/15	70	103	86.5	71	106	88.5	71	107	89.0	67	101	84.0	63	99	81.0	62	100	81.0	63	101	82.0	64	102	83.0	68	105	86.5	70	104	87.0	71	102	86.5	68	100	84.0
07/16	69	105	87.0	74	106	90.0	66	101	83.5	63	98	80.5	63	99	81.0	63	101	82.0	63	102	82.5	65	105	85.0	69	103	86.0	68	100	84.0	66	98	82.0	66	95	80.5
07/17	73	107	90.0	67	103	85.0	63	97	80.0	61	99	80.0	63	98	80.5	63	102	82.5	65	104	84.5	68	105	86.5	68	101	84.5	66	99	82.5	68	97	82.5	67	96	81.5
07/18	67	103	85.0	67	98	82.5	61	99	80.0	61	100	80.5	63	103	83.0	65	105	85.0	70	107	88.5	69	103	86.0	67	97	82.0	65	96	80.5	65	97	81.0	68	99	83.5
07/19	66	95	80.5	64	98	81.0	61	98	79.5	62	102	82.0	66	106	86.0	66	106	86.0	65	102	83.5	64	101	82.5	67	98	82.5	67	99	83.0	67	99	83.0	67	101	84.0
07/20	63	99	81.0	65	98	81.5	63	104	83.5	69	110	89.5	71	109	90.0	68	102	85.0	66	100	83.0	65	100	82.5	67	96	81.5	65	96	80.5	65	97	81.0	68	101	84.5
07/21	64	100	82.0	68	102	85.0	70	109	89.5	72	107	89.5	68	102	85.0	66	100	83.0	67	101	84.0	68	102	85.0	70	103	86.5	68	104	86.0	69	101	85.0	68	101	84.5
07/22	67	103	85.0	71	109	90.0	71	106	88.5	68	102	85.0	65	99	82.0	65	100	82.5	66	101	83.5	66	101	83.5	68	102	85.0	67	104	85.5	68	99	83.5	66	99	82.5
07/23	69	108	88.5	74	107	90.5	68	102	85.0	65	100	82.5	63	102	82.5	67	104	85.5	67	103	85.0	66	104	85.0	69	106	87.5	68	100	84.0	70	99	84.5	68	100	84.0
07/24	72	105	88.5	71	103	87.0	64	100	82.0	65	103	84.0	66	105	85.5	67	103	85.0	66	104	85.0	66	103	84.5	67	101	84.0	67	102	84.5	68	98	83.0	66	98	82.0
07/25	71	102	86.5	68	100	84.0	64	101	82.5	65	103	84.0	66	105	85.5	66	104	85.0	67	105	86.0	67	104	85.5	72	105	88.5	72	103	87.5	72	101	86.5	69	102	85.5
07/26	66	103	84.5	67	101	84.0	65	102	83.5	66	104	85.0	66	106	86.0	67	106	86.5	68	106	87.0	68	107	87.5	69	104	86.5	68	101	84.5	68	99	83.5	67	100	83.5
07/27	66	101	83.5	71	104	87.5	67	103	85.0	66	105	85.5	67	108	87.5	69	108	88.5	69	106	87.5	67	106	86.5	70	109	89.5	72	107	89.5	72	102	87.0	67	100	83.5
07/28	70	104	87.0	74	104	89.0	68	106	87.0	68	108	88.0	69	110	89.5	69	110	89.5	72	110	91.0	72	108	90.0	72	107	89.5	71	105	88.0	69	99	84.0	66	98	82.0
07/29	72	105	88.5	69	105	87.0	66	108	87.0	69	111	90.0	71	114	92.5	72	113	92.5	72	108	90.0	71	105	88.0	73	105	89.0	68	103	85.5	67	99	83.0	65	98	81.5
07/30	67	106	86.5	68	109	88.5	72	111	91.5	71	115	93.0	73	114	93.5	72	107	89.5	72	105	88.5	69	104	86.5	73	105	89.0	71	102	86.5	70	99	84.5	67	99	83.0
07/31	68	106	87.0	70	111	90.5	79	116	97.5	78	114	96.0	76	108	92.0	73	106	89.5	69	104	86.5	68	103	85.5	72	105	88.5	71	101	86.0	69	100	84.5	67	100	83.5

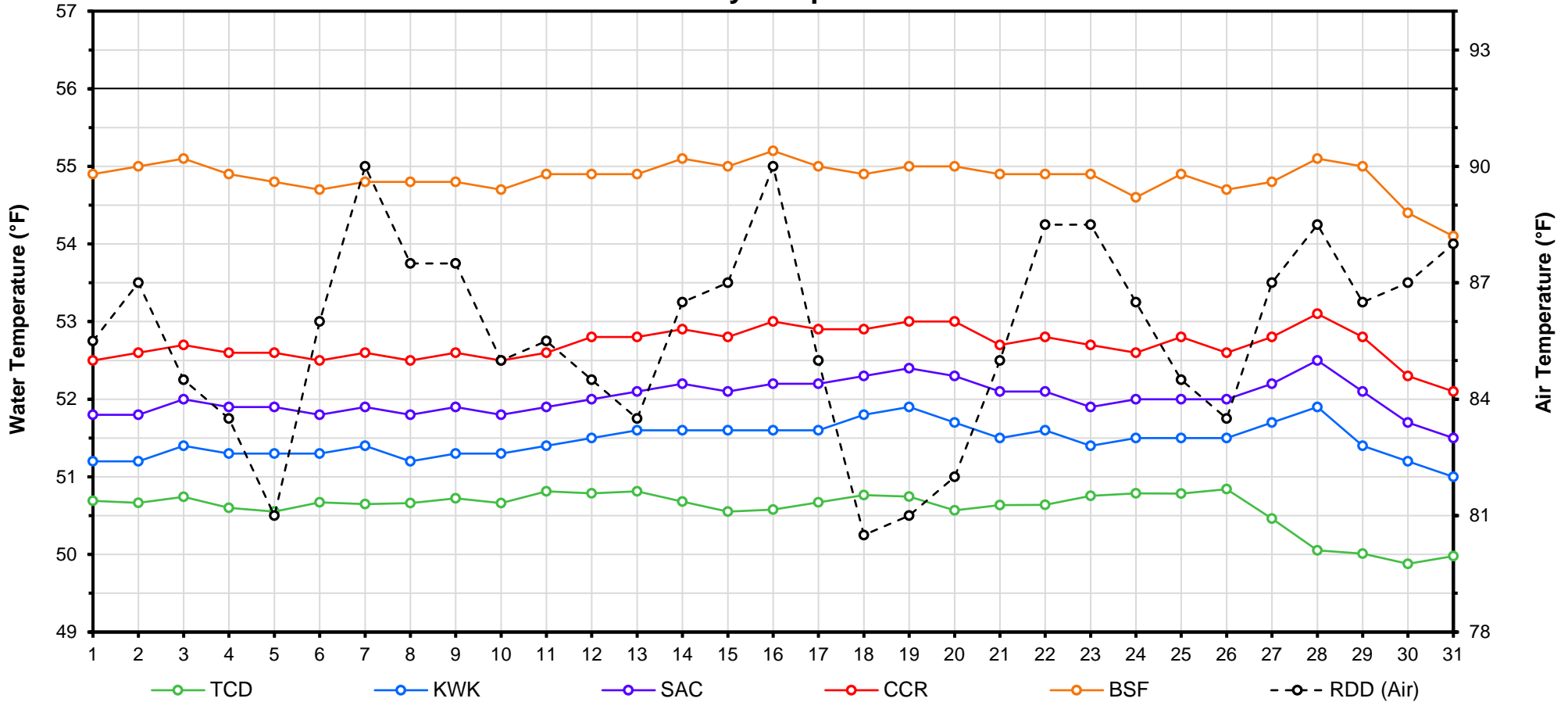
[Web Links](#)

[10-Day Min/Max Forecast](#)
[Previous Days Min/Max Actuals](#)

[Legend](#)

NR = Forecasted temperatures not recorded
100 = Previous day actual temperatures in red and bolded indicate a record temperature for that date

Mean Daily Temperatures



Station Details			
Code	Body of Water	Location ¹	CDEC Link
TCD	N/A	Shasta Power Plant	N/A
SHD	Sacramento River	0.3 miles downstream of Shasta Power Plant	Click Here
SPP	N/A	Spring Creek Power Plant	N/A
KWK	Sacramento River	0.8 miles downstream of Keswick Dam	Click Here
SAC	Sacramento River	4.8 miles downstream of Keswick Dam	Click Here
CCR	Sacramento River	9.7 miles downstream of Keswick Dam	Click Here
BSF	Sacramento River	25 miles downstream of Keswick Dam	Click Here
JLF	Sacramento River	34 miles downstream of Keswick Dam	Click Here
BND	Sacramento River	41 miles downstream of Keswick Dam	Click Here
RDB	Sacramento River	58 miles downstream of Keswick Dam	Click Here
IGO	Clear Creek	7.3 miles downstream of Whiskeytown Dam	Click Here
LWS	Trinity River	1.1 miles downstream of Lewiston Dam	Click Here
DGC ²	Trinity River	19 miles downstream of Lewiston Dam	Click Here
NFH ³	Trinity River	38 miles downstream of Lewiston Dam	Click Here

Temperature Control Point		
Point	Temp. (°F)	Date Range
BSF	56.0	06/01/17 - Current

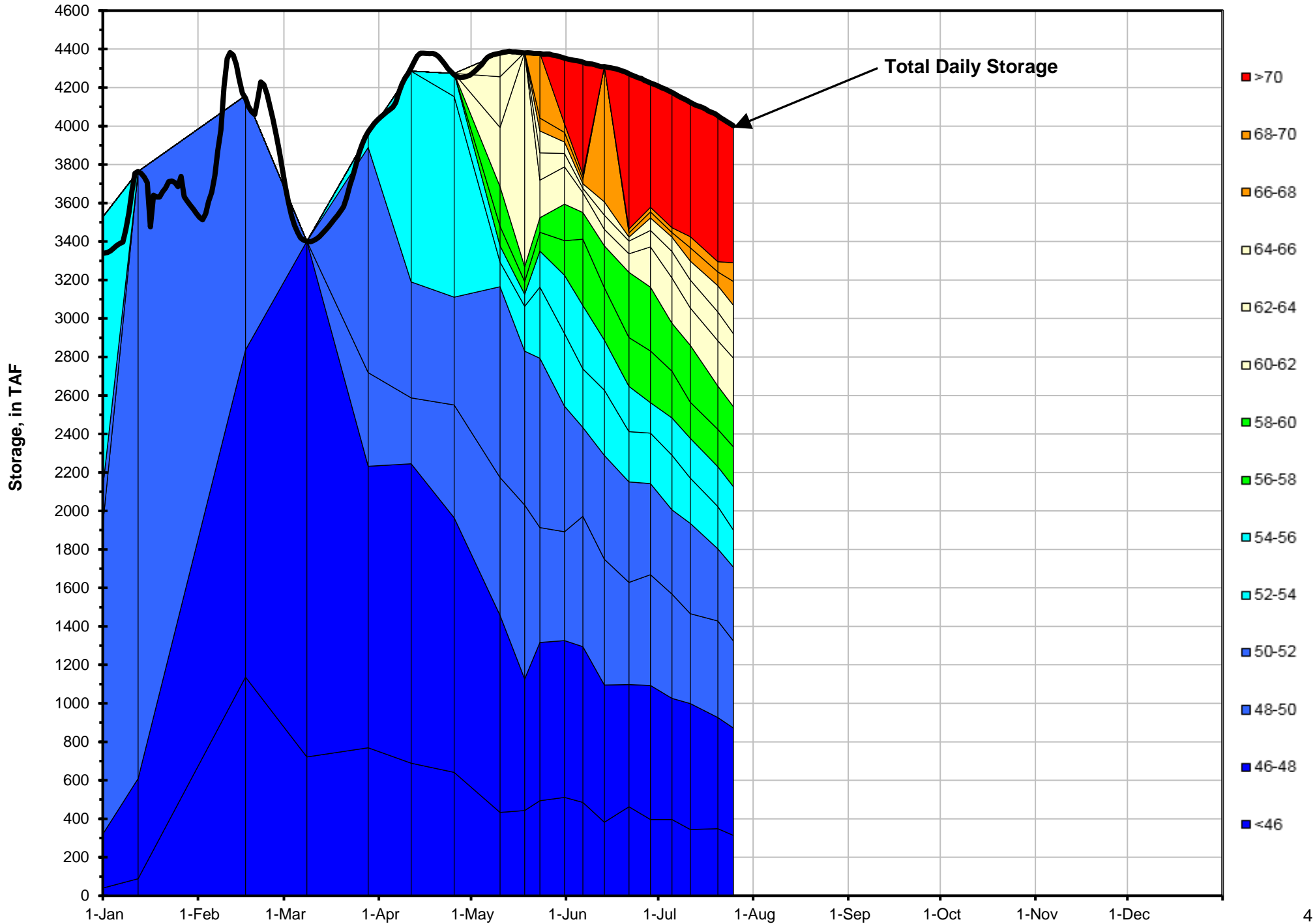
Notes

¹ Distances are approximate

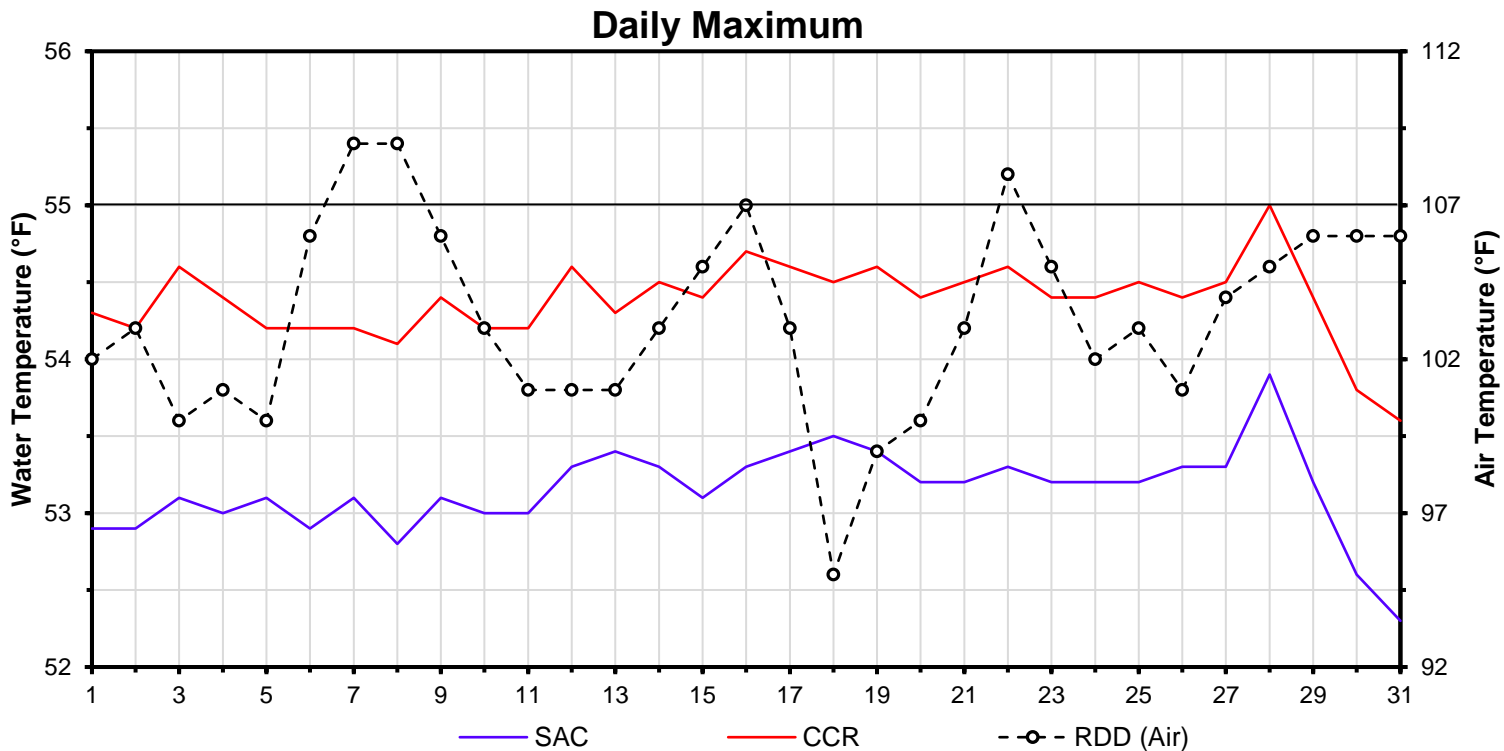
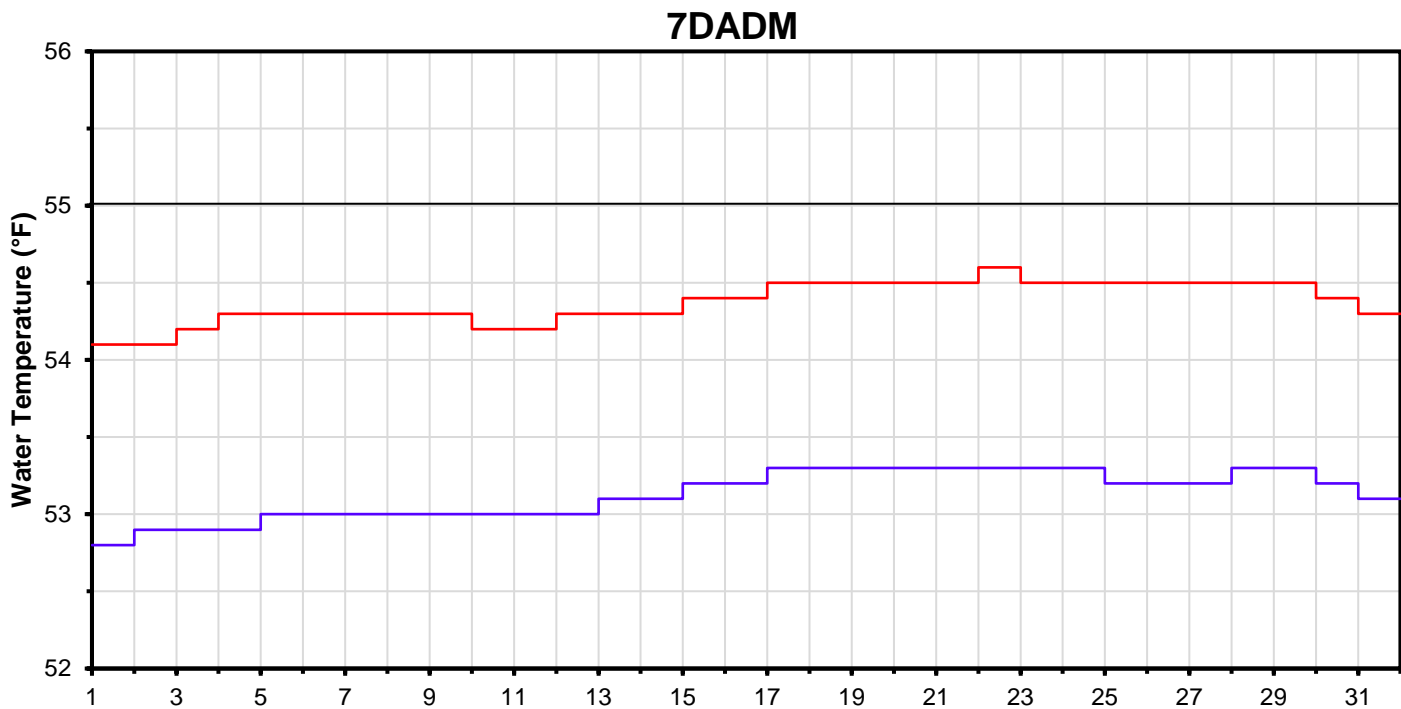
² DGC is only reported in September

³ NFH is only reported in October, November and December

Lake Shasta Isothermalbaths - 2017 (Water Temperature, in °F)



DATE	Daily Max		7DADM ¹		DAT ²
	SAC	CCR	SAC	CCR	BSF
07/01	52.9	54.3	52.8	54.1	54.9
07/02	52.9	54.2	52.9	54.1	55.0
07/03	53.1	54.6	52.9	54.2	55.1
07/04	53.0	54.4	52.9	54.3	54.9
07/05	53.1	54.2	53.0	54.3	54.8
07/06	52.9	54.2	53.0	54.3	54.7
07/07	53.1	54.2	53.0	54.3	54.8
07/08	52.8	54.1	53.0	54.3	54.8
07/09	53.1	54.4	53.0	54.3	54.8
07/10	53.0	54.2	53.0	54.2	54.7
07/11	53.0	54.2	53.0	54.2	54.9
07/12	53.3	54.6	53.0	54.3	54.9
07/13	53.4	54.3	53.1	54.3	54.9
07/14	53.3	54.5	53.1	54.3	55.1
07/15	53.1	54.4	53.2	54.4	55.0
07/16	53.3	54.7	53.2	54.4	55.2
07/17	53.4	54.6	53.3	54.5	55.0
07/18	53.5	54.5	53.3	54.5	54.9
07/19	53.4	54.6	53.3	54.5	55.0
07/20	53.2	54.4	53.3	54.5	55.0
07/21	53.2	54.5	53.3	54.5	54.9
07/22	53.3	54.6	53.3	54.6	54.9
07/23	53.2	54.4	53.3	54.5	54.9
07/24	53.2	54.4	53.3	54.5	54.6
07/25	53.2	54.5	53.2	54.5	54.9
07/26	53.3	54.4	53.2	54.5	54.7
07/27	53.3	54.5	53.2	54.5	54.8
07/28	53.9	55.0	53.3	54.5	55.1
07/29	53.2	54.4	53.3	54.5	55.0
07/30	52.6	53.8	53.2	54.4	54.4
07/31	52.3	53.6	53.1	54.3	54.1



Notes

¹ 7DADM = 7-Day Average Daily Maximum

² DAT = Daily Average Temperature