

Northern CVP Water Temperature Report

July - 2016

Page	Description
1	- Mean Daily Water Temperature, Release Flow Rates and Air Temperatures with Monthly Averages
2	- Redding 10-Day Forecasted Air Temperatures
3	- Sacramento River Mean Daily Water Temperature, Air Temperature and 10-Day Forecasted Air Temperature Plot - Water Temperature Measuring Station Details - Temperature Control Point Details
4	- Lake Shasta Isothermalbaths Plot
5	- Daily Maximum and 7DADM
x	- TCD Configuration (External Link)



All Data in this Report is Preliminary and Subject to Change

DATE	Mean Daily Water Temperatures (°F)													Mean Daily Release (CFS)			Mean Daily Air Temperatures (°F)			
	TCD ¹	SHD	SPP ¹	KWK	SAC	CCR	BSF ²	JLF	BND	RDB	IGO	LWS	----- ³	Shasta Generation	Spring Creek P.P.	Keswick Total	RDD	BSF	RDB	LWS
Jun	50.6	49.7	52.5	51.5	52.2	53.0	55.4	57.1	57.8	59.8	55.2	48.8	-	7640	253	8083	79.1	75.5	76.3	67.6
07/01	50.0	49.3	52.9	50.9	51.7	52.5	55.1	56.9	57.7	60.2	58.3	49.8	-	8578	638	9399	90.0	82.8	81.8	76.3
07/02	50.2	49.3	53.1	51.0	51.8	52.4	54.8	56.4	57.2	59.5	58.1	49.8	-	8355	827	9390	86.0	80.8	80.1	75.8
07/03	50.2	49.4	53.1	51.2	51.9	52.6	54.9	56.5	57.3	59.5	58.3	49.9	-	7731	1248	9387	84.5	80.3	79.2	74.6
07/04	50.3	49.4	53.2	51.3	52.0	52.6	54.9	56.5	57.3	59.4	57.9	50.0	-	8211	1174	9387	83.0	78.5	77.7	72.4
07/05	50.3	49.4	53.4	51.2	51.9	52.5	54.7	56.3	57.0	59.1	57.6	50.0	-	8097	1166	9388	80.0	76.3	76.3	69.8
07/06	50.3	49.4	53.5	51.3	52.0	52.7	54.9	56.4	57.1	59.1	57.7	50.0	-	7702	1163	9410	81.0	76.0	75.2	69.7
07/07	50.9	49.9	53.6	51.3	52.0	52.7	54.9	56.5	57.2	59.3	58.1	50.2	-	8396	700	9388	79.0	75.5	74.6	70.8
07/08	50.7	49.7	53.7	51.7	52.1	52.5	53.9	55.6	56.4	58.5	57.7	49.8	-	8733	899	10052	76.0	74.1	73.3	66.5
07/09	50.8	49.8	53.9	51.3	51.8	52.5	54.2	55.5	56.1	58.1	59.1	50.0	-	8365	1173	10087	78.0	72.9	75.1	65.8
07/10	51.3	50.0	54.0	51.6	52.0	52.5	54.2	55.6	56.2	57.9	59.2	50.2	-	8989	1336	10087	↓ 71.0	70.7	71.8	61.6
07/11	50.3	49.6	54.2	51.9	52.4	52.9	54.4	55.9	56.5	58.1	59.0	50.4	-	9366	685	10081	80.0	75.9	76.0	64.6
07/12	50.3	49.5	54.3	51.4	52.1	52.7	54.6	56.2	56.8	58.6	59.0	50.8	-	8688	1164	10088	77.0	74.9	75.4	67.0
07/13	50.6	49.7	54.3	51.4	52.0	52.6	54.3	55.9	56.6	58.5	59.7	50.7	-	8832	1265	10087	85.0	78.5	79.8	70.4
07/14	50.5	49.6	54.5	51.6	52.2	52.8	54.4	56.0	56.6	58.6	59.8	50.3	-	8100	1256	10092	84.5	80.4	80.4	74.6
07/15	50.6	49.7	54.6	51.7	52.4	53.1	54.8	56.4	57.1	59.0	60.2	50.3	-	8817	1389	10090	86.0	81.3	81.0	76.1
07/16	50.6	49.7	54.8	51.9	52.5	53.2	54.9	56.5	57.2	59.2	60.1	50.2	-	8277	1738	10123	86.5	79.2	78.6	73.0
07/17	50.8	49.9	54.9	51.9	52.5	53.1	55.0	56.6	57.3	59.3	59.9	49.9	-	8298	1578	10090	78.0	74.5	74.6	69.3
07/18	50.9	49.9	55.2	52.0	52.6	53.1	54.9	56.4	57.1	59.0	59.9	50.4	-	8565	1520	10086	74.5	72.0	70.8	66.5
07/19	50.8	49.9	55.2	52.1	52.6	53.2	54.9	56.3	57.0	58.8	59.7	50.6	-	8559	1187	10090	76.5	72.5	72.2	69.3
07/20	50.6	49.7	55.4	51.9	52.5	53.0	54.7	56.2	56.8	58.7	59.1	50.8	-	8650	1167	10086	77.5	73.5	74.0	69.5
07/21	50.6	49.9	55.5	51.5	52.1	52.8	54.5	56.0	56.7	58.6	59.0	51.0	-	9106	840	10089	78.0	73.7	74.3	69.3
07/22	50.6	49.9	55.5	51.6	52.1	52.7	54.3	55.7	56.3	58.2	59.2	51.1	-	9221	714	10090	78.5	76.0	75.9	69.5
07/23	50.5	49.8	55.5	51.6	52.2	52.9	54.5	56.0	56.7	58.5	59.7	51.2	-	9207	714	10090	86.5	80.5	82.2	72.0
07/24	50.4	49.8	55.5	51.6	52.2	52.8	54.6	56.1	56.8	58.8	60.0	51.8	-	8812	865	10088	89.5	79.9	80.6	75.7
07/25	50.8	50.1	55.7	51.6	52.2	52.8	54.7	56.2	56.9	59.0	59.3	52.0	-	8931	869	10085	87.5	81.9	82.9	77.4
07/26	50.7	50.0	55.8	51.9	52.5	53.0	54.7	56.2	56.9	58.9	58.9	52.2	-	9191	713	10044	88.0	83.4	83.6	79.1
07/27	50.5	49.8	55.8	51.8	52.5	53.1	54.8	56.4	57.1	59.2	58.8	52.4	-	9222	454	9966	89.0	83.7	84.7	79.4
07/28	50.6	49.9	55.9	51.6	52.2	52.8	54.6	56.2	57.0	59.1	58.8	52.6	-	9184	775	10151	91.5	85.5	85.6	81.2
07/29	50.7	50.0	55.8	51.7	52.3	52.9	54.6	56.2	56.9	59.0	58.9	53.1	-	9232	927	10188	91.0	85.7	84.9	82.1
07/30	50.7	50.1	56.0	51.8	52.5	53.1	54.8	56.4	57.1	59.1	59.0	53.6	-	8896	955	10189	89.5	83.8	83.7	81.6
07/31	50.8	50.2	56.0	52.0	52.6	53.2	54.8	56.3	57.0	59.0	58.6	53.9	-	8789	1108	10188	81.0	77.5	77.5	77.2
Jul	50.6	49.8	54.7	51.6	52.2	52.8	54.7	56.2	56.9	58.9	59.0	50.9	-	8681	1039	9937	82.7	78.1	78.2	72.5

Total CFS	269100	32207	308056
Total AF	533749	63881	611017

Legend

- ? = 1-9 hours of data missing (Average includes estimations)
- ! = 10 or more hours of data missing (Average not calculated)
- # = Station out of service
- ↑ = Record high air temperature
- ↓ = Record low air temperature
- = Monthly Averages

Notes

- ¹ Temperatures are weighted averages based on individual penstock flow and temperature
- Highlighted cells in the TCD column indicate a TCD change was made on that day
- ² Current control point (see page 3 for more details)
- ³ Column not used this month

D A T E	Redding (RDD) Daily Air Temperatures (°F)																																						
	Actual			Forecasted																																			
	Previous Day			Current Day			1 Day			2 Days			3 Days			4 Days			5 Days			6 Days			7 Days			8 Days			9 Days			10 Days					
	↓	↑	Avg	↓	↑	Avg	↓	↑	Avg	↓	↑	Avg	↓	↑	Avg	↓	↑	Avg	↓	↑	Avg	↓	↑	Avg	↓	↑	Avg	↓	↑	Avg	↓	↑	Avg	↓	↑	Avg			
07/01	72	108	90.0	81	101	91.0	67	98	82.5	67	97	82.0	64	96	80.0	63	94	78.5	63	95	79.0	63	96	79.5	63	95	79.0	64	96	80.0	66	97	81.5	65	96	80.5			
07/02	78	102	90.0	78	101	89.5	68	97	82.5	67	95	82.0	65	94	80.0	64	92	78.5	63	93	79.0	63	93	79.5	65	95	79.0	66	94	80.0	65	96	81.5	64	97	80.5			
07/03	70	102	86.0	71	98	84.5	65	95	82.5	64	94	82.0	64	92	80.0	63	92	78.5	64	92	79.0	64	93	79.5	61	86	79.0	62	94	80.0	66	98	81.5	65	98	80.5			
07/04	71	98	84.5	70	94	82.0	64	93	82.5	62	90	82.0	64	92	80.0	63	90	78.5	63	89	79.0	62	87	79.5	64	93	79.0	63	94	80.0	67	98	81.5	65	96	80.5			
07/05	69	97	83.0	66	93	79.5	64	94	82.5	64	95	82.0	64	95	82.0	64	88	80.0	64	86	78.5	62	88	79.0	63	92	79.5	63	87	79.0	62	95	80.0	67	98	81.5	66	97	80.5
07/06	66	94	80.0	67	93	80.0	65	94	79.5	65	89	77.0	64	85	74.5	61	86	73.5	62	92	77.0	63	88	75.5	63	96	79.5	65	97	81.0	67	99	83.0	65	97	81.0			
07/07	67	95	81.0	66	93	79.5	64	89	76.5	64	84	74.0	60	84	72.0	62	92	77.0	63	92	77.5	64	95	79.5	65	102	83.5	68	100	84.0	67	98	82.5	64	93	78.5			
07/08	65	93	79.0	66	89	77.5	64	85	74.5	59	83	71.0	61	92	76.5	63	93	78.0	64	96	80.0	65	99	82.0	68	102	85.0	68	100	84.0	67	98	82.5	66	95	80.5			
07/09	66	86	76.0	72	85	78.5	56	84	70.0	61	92	76.5	63	94	78.5	65	99	82.0	66	101	83.5	65	100	82.5	68	101	84.5	67	99	83.0	67	99	83.0	66	96	81.0			
07/10	68	88	78.0	58	84	71.0	60	93	76.5	63	95	79.0	64	99	81.5	65	101	83.0	67	99	83.0	66	96	81.0	67	91	79.0	63	94	78.5	64	96	80.0	63	96	79.5			
07/11	57	85	71.0	67	93	80.0	61	94	77.5	64	101	82.5	67	104	85.5	67	100	83.5	67	97	82.0	65	92	78.5	63	94	78.5	63	94	78.5	62	97	79.5	64	92	78.0			
07/12	67	93	80.0	61	94	77.5	65	101	83.0	67	105	86.0	69	104	86.5	68	98	83.0	65	95	80.0	64	92	78.0	62	92	77.0	64	94	79.0	64	96	80.0	64	95	79.5			
07/13	60	94	77.0	68	100	84.0	66	103	84.5	67	104	85.5	66	98	82.0	64	93	78.5	64	92	78.0	63	94	78.5	63	96	79.5	64	94	79.0	64	97	80.5	63	94	78.5			
07/14	68	102	85.0	64	105	84.5	66	98	82.0	65	93	79.0	63	91	77.0	63	93	78.0	66	95	80.5	65	93	79.0	63	93	78.0	63	96	79.5	64	97	80.5	63	95	79.0			
07/15	64	105	84.5	69	104	86.5	66	98	82.0	65	93	79.0	63	89	76.0	64	93	78.5	64	96	80.0	66	97	81.5	62	96	79.0	63	97	80.0	67	101	84.0	66	96	81.0			
07/16	69	103	86.0	75	98	86.5	66	93	79.5	63	89	76.0	61	91	76.0	62	93	77.5	63	95	79.0	64	99	81.5	69	107	88.0	70	104	87.0	70	102	86.0	67	102	84.5			
07/17	73	100	86.5	67	93	80.0	63	88	75.5	61	88	74.5	61	91	76.0	62	94	78.0	62	97	79.5	65	102	83.5	65	100	82.5	66	100	83.0	67	100	83.5	66	99	82.5			
07/18	65	91	78.0	64	87	75.5	61	88	74.5	61	92	76.5	62	92	77.0	62	98	80.0	64	105	84.5	69	107	88.0	70	107	88.5	70	104	87.0	70	102	86.0	67	99	83.0			
07/19	63	86	74.5	65	90	77.5	61	93	77.0	63	92	77.5	62	97	79.5	65	104	84.5	68	104	86.0	69	105	87.0	66	102	84.0	67	101	84.0	67	101	84.0	66	100	83.0			
07/20	63	90	76.5	62	91	76.5	62	92	77.0	62	96	79.0	65	103	84.0	68	104	86.0	67	105	86.0	68	106	87.0	69	105	87.0	68	103	85.5	68	104	86.0	67	102	84.5			
07/21	61	94	77.5	63	95	79.0	63	99	81.0	65	103	84.0	66	105	85.5	65	106	85.5	67	108	87.5	69	106	87.5	68	103	85.5	67	102	84.5	68	103	85.5	68	100	84.0			
07/22	61	95	78.0	61	99	80.0	65	104	84.5	68	106	87.0	67	105	86.0	67	107	87.0	68	108	88.0	69	109	89.0	70	105	87.5	70	103	86.5	68	103	85.5	68	101	84.5			
07/23	59	98	78.5	68	105	86.5	66	106	86.0	65	105	85.0	67	107	87.0	69	108	88.5	71	110	90.5	71	108	89.5	71	103	87.0	67	101	84.0	67	101	84.0	65	100	82.5			
07/24	67	106	86.5	76	107	91.5	71	105	88.0	71	108	89.5	72	109	90.5	72	111	91.5	72	109	90.5	69	105	87.0	70	100	85.0	66	100	83.0	65	100	82.5	65	99	82.0			
07/25	75	104	89.5	70	103	86.5	69	109	89.0	72	109	90.5	73	111	92.0	73	109	91.0	71	105	88.0	67	100	83.5	66	97	81.5	65	99	82.0	66	100	83.0	65	99	82.0			
07/26	69	106	87.5	69	109	89.0	72	110	91.0	73	111	92.0	75	110	92.5	73	107	90.0	67	100	83.5	66	99	82.5	64	99	81.5	64	97	80.5	63	99	81.0	64	98	81.0			
07/27	67	109	88.0	70	110	90.0	73	112	92.5	75	111	93.0	74	107	90.5	69	101	85.0	66	100	83.0	66	100	83.0	65	101	83.0	65	100	82.5	65	100	82.5	66	100	83.0			
07/28	70	108	89.0	74	110	92.0	75	110	92.5	74	107	90.5	68	102	85.0	66	101	83.5	66	101	83.5	66	102	84.0	66	101	83.5	65	98	81.5	64	98	81.0	65	99	82.0			
07/29	72	111	91.5	75	111	93.0	73	107	90.0	67	102	84.5	65	101	83.0	66	100	83.0	66	103	84.5	65	102	83.5	65	100	82.5	64	98	81.0	64	99	81.5	64	100	82.0			
07/30	73	109	91.0	74	107	90.5	67	102	84.5	65	100	82.5	66	99	82.5	65	102	83.5	64	101	82.5	64	99	81.5	65	100	82.5	64	98	81.0	64	98	81.0	65	100	82.5			
07/31	72	107	89.5	66	102	84.0	65	100	82.5	64	100	82.0	65	101	83.0	65	100	82.5	63	96	79.5	63	97	80.0	62	97	79.5	64	98	81.0	64	99	81.5	64	101	82.5			

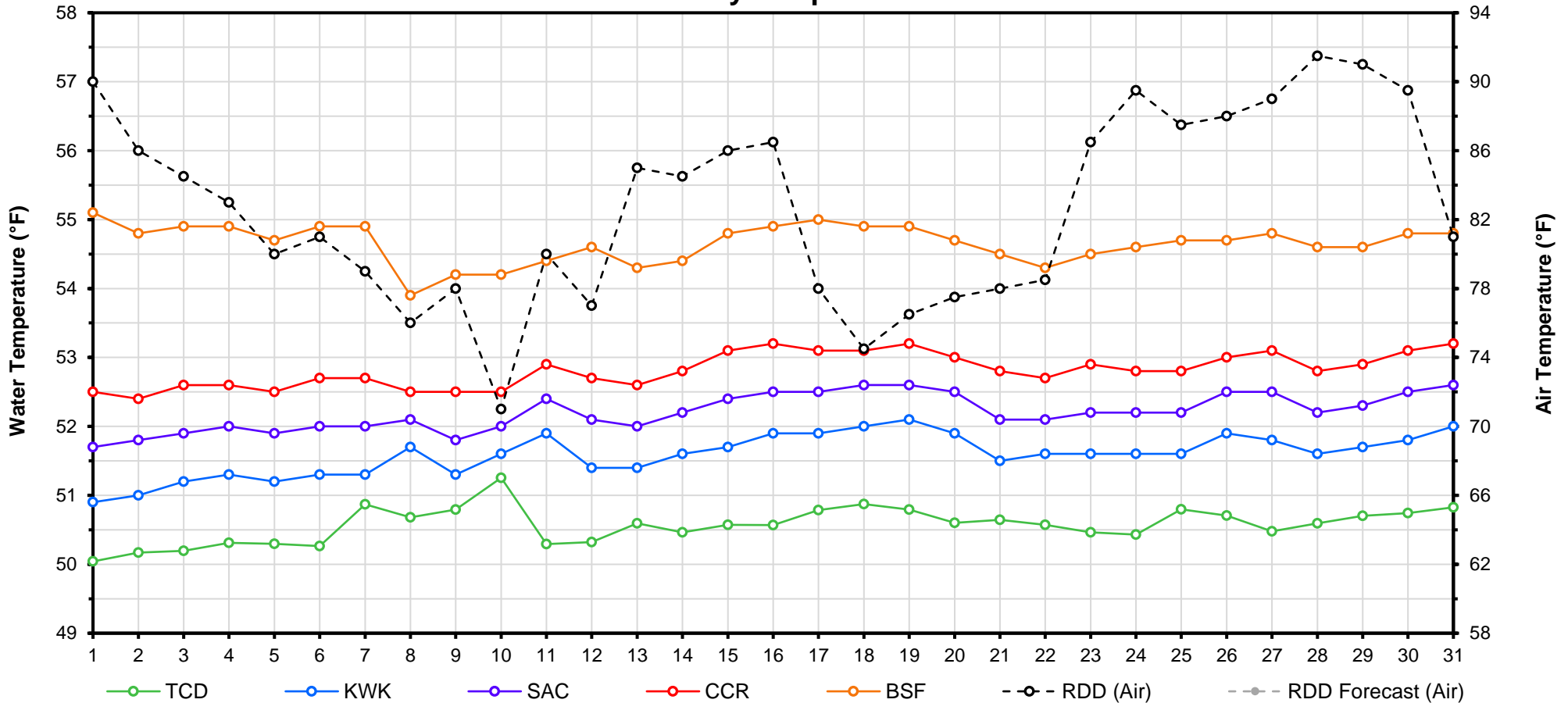
[Web Links](#)

[Legend](#)

[10-Day Min/Max Forecast](#)
[Previous Days Min/Max Actuals](#)

NR = Forecasted temperatures not recorded
100 = Previous day actual temperatures in red and bolded indicate a record temperature for that date

Mean Daily Temperatures



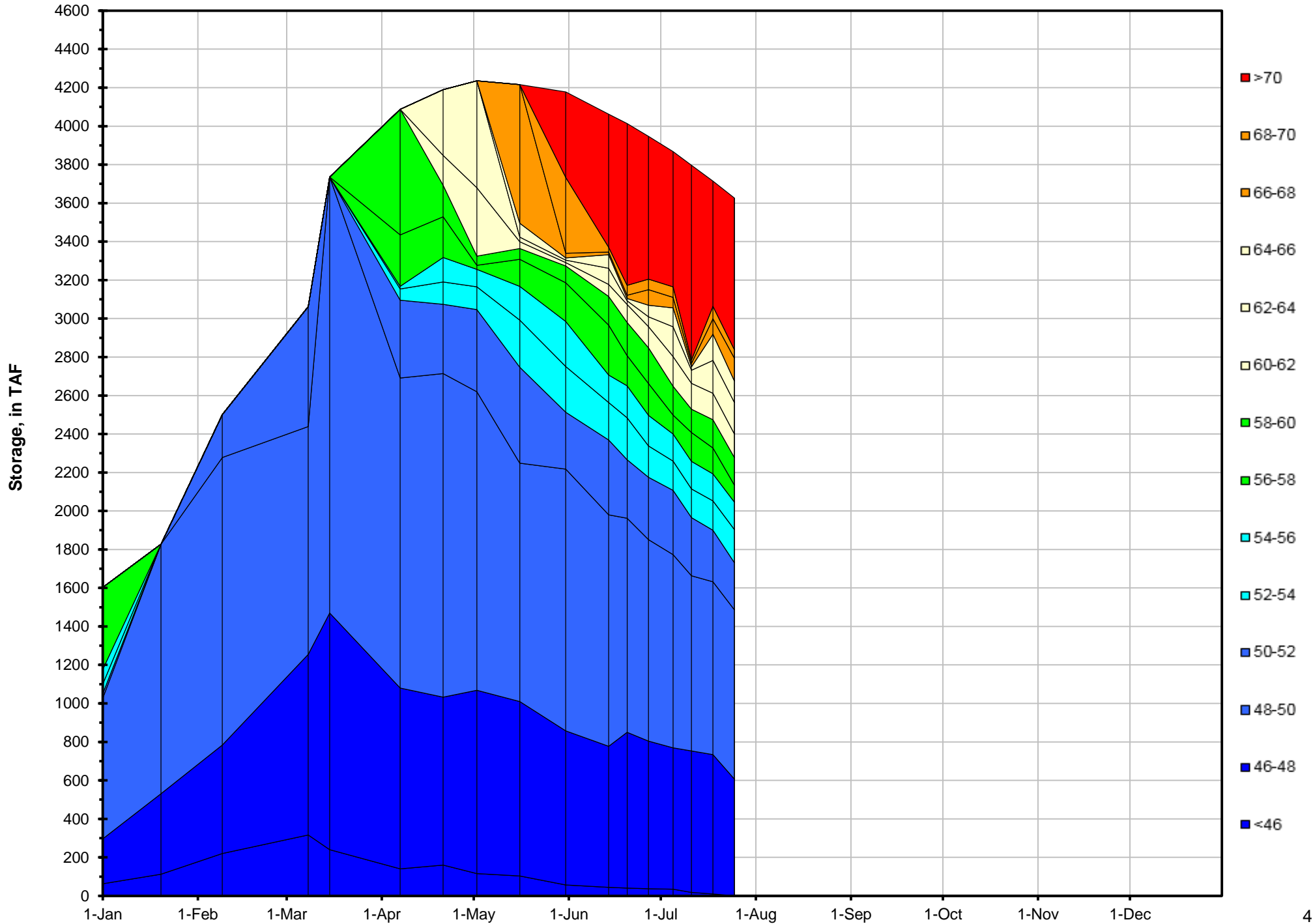
Station Details			
Code	Body of Water	Location ¹	CDEC Link
TCD	N/A	Shasta Power Plant	N/A
SHD	Sacramento River	0.3 miles downstream of Shasta Power Plant	Click Here
SPP	N/A	Spring Creek Power Plant	N/A
KWK	Sacramento River	0.8 miles downstream of Keswick Dam	Click Here
SAC	Sacramento River	4.8 miles downstream of Keswick Dam	Click Here
CCR	Sacramento River	9.7 miles downstream of Keswick Dam	Click Here
BSF	Sacramento River	25 miles downstream of Keswick Dam	Click Here
JLF	Sacramento River	34 miles downstream of Keswick Dam	Click Here
BND	Sacramento River	41 miles downstream of Keswick Dam	Click Here
RDB	Sacramento River	58 miles downstream of Keswick Dam	Click Here
IGO	Clear Creek	7.3 miles downstream of Whiskeytown Dam	Click Here
LWS	Trinity River	1.1 miles downstream of Lewiston Dam	Click Here
DGC ²	Trinity River	19 miles downstream of Lewiston Dam	Click Here
NFH ³	Trinity River	38 miles downstream of Lewiston Dam	Click Here

Temperature Control Point		
Point	Temp. (°F)	Date Range
BSF	56.0	6/17 - 7/31

Notes

- ¹ Distances are approximate
- ² DGC is only reported in September
- ³ NFH is only reported in October, November and December

Lake Shasta Isothermalbaths - 2016 (Water Temperature, in °F)



DATE	Daily Max		7DADM ¹		DAT ²
	SAC	CCR	SAC	CCR	BSF
07/01	53.3	54.6	53.7	55.0	55.1
07/02	53.2	54.5	53.5	54.8	54.8
07/03	53.4	54.6	53.5	54.8	54.9
07/04	53.6	54.3	53.4	54.6	54.9
07/05	53.2	54.2	53.4	54.6	54.7
07/06	53.3	54.4	53.4	54.5	54.9
07/07	53.4	54.6	53.3	54.5	54.9
07/08	53.3	53.6	53.3	54.3	53.9
07/09	53.3	54.4	53.4	54.3	54.2
07/10	53.5	54.1	53.4	54.2	54.2
07/11	53.8	54.4	53.4	54.2	54.4
07/12	53.0	54.0	53.4	54.2	54.6
07/13	53.1	54.2	53.3	54.2	54.3
07/14	53.7	54.6	53.4	54.2	54.4
07/15	53.9	55.0	53.5	54.4	54.8
07/16	54.2	55.2	53.6	54.5	54.9
07/17	53.8	54.9	53.6	54.6	55.0
07/18	53.8	54.8	53.6	54.7	54.9
07/19	53.8	54.8	53.8	54.8	54.9
07/20	53.6	54.6	53.8	54.8	54.7
07/21	53.3	54.4	53.8	54.8	54.5
07/22	53.5	54.6	53.7	54.8	54.3
07/23	53.7	54.8	53.6	54.7	54.5
07/24	53.6	54.7	53.6	54.7	54.6
07/25	53.4	54.7	53.6	54.7	54.7
07/26	53.8	54.9	53.6	54.7	54.7
07/27	53.9	54.9	53.6	54.7	54.8
07/28	53.6	54.7	53.6	54.8	54.6
07/29	53.6	54.6	53.7	54.8	54.6
07/30	53.8	55.0	53.7	54.8	54.8
07/31	54.0	55.1	53.7	54.8	54.8

Notes

¹ 7DADM = 7-Day Average
Daily Maximum

² DAT = Daily Average
Temperature

