

Northern CVP Water Temperature Report

June - 2021

Page	Description
2	- Mean Daily Water Temperature, Release Flow Rates and Air Temperatures with Monthly Averages
3	- Redding 10-Day Forecasted Air Temperatures
4	- Sacramento River Mean Daily Water Temperature, Air Temperature and 10-Day Forecasted Air Temperature Plot - Water Temperature Measuring Station Details - Temperature Control Point Details
5	- Shasta Lake Isothermobaths & Cold Water Pool Statistics
14	- Trinity Lake Isothermobaths & Cold Water Pool Statistics
23	- Whiskeytown Lake Isothermobaths & Cold Water Pool Statistics
x	- TCD Configuration (External Link)



— BUREAU OF —
RECLAMATION

All Data in this Report is Preliminary and Subject to Change

DATE	Mean Daily Water Temperatures (°F)														Mean Daily Release (CFS)			Mean Daily Air Temperatures (°F)			
	TCD ¹	SHD	SPP ¹	KWK	SAC ²	CCR	BSF	JLF	BND	RDB	IGO ³	LWS	DGC	NFH	Shasta Generation	Spring Creek P.P.	Keswick Total	RDD	BSF	RDB	
May	52.6	55.8	51.6	57.1	57.6	58.1	59.6	60.6	61.3	62.3	53.3	50.5	53.4	55.4	4504	115	8281	72.8	69.9	71.3	
06/01	54.2	52.6	51.9	55.1	56.3	57.1	59.7	61.4	62.6	64.1	56.8	51.4	56.8	60.5	6698	235	7022	87.0	82.3	83.2	
06/02	53.9	52.1	51.7	55.0	56.1	56.8	59.7	61.5	62.8	64.6	56.8	51.5	57.4	61.5	5824	1157	7112	86.0	82.0	80.4	
06/03	54.6	52.4	51.5	54.8	55.9	56.7	59.3	61.1	62.4	64.1	56.7	51.7	58.0	62.1	5348	772	7123	85.5	82.5	80.6	
06/04	54.7	53.0	51.5	54.9	56.0	56.7	59.1	60.9	62.2	64.0	57.0	51.8	57.9	61.9	6210	902	7156	85.0	82.5	82.8	
06/05	55.5	54.0	52.6	55.2	56.1	56.8	59.2	61.0	62.2	64.0	56.5	51.8	57.5	61.1	7080	77	7174	83.0	81.2	80.3	
06/06	55.3	53.1	52.5	55.7	56.5	57.1	59.2	60.7	61.7	63.1	56.0	51.9	56.9	60.0	6736	77	7226	82.0	77.5	79.5	
06/07	54.7	53.0	51.7	55.9	56.5	57.0	59.0	60.3	61.3	62.5	55.0	52.1	56.2	58.9	6109	624	7181	72.0	69.1	70.4	
06/08	54.9	52.8	52.2	55.2	55.9	56.5	58.6	59.6	60.5	61.5	54.6	51.8	56.0	58.3	5510	1071	7126	66.0	63.9	63.5	
06/09	56.0	53.8	52.1	55.0	55.7	56.1	57.9	58.9	59.9	61.0	54.5	51.2	55.0	57.7	6168	763	7138	65.5	61.9	62.5	
06/10	54.5	53.3	52.3	55.4	56.0	56.4	58.0	58.9	59.8	60.8	54.6	51.1	55.2	57.4	5529	750	7170	65.5	63.0	63.2	
06/11	54.3	52.4	52.2	55.4	56.2	56.8	58.6	59.4	60.2	61.0	55.3	50.5	55.2	58.2	5835	1028	7175	71.0	67.0	67.1	
06/12	54.3	52.4	52.1	54.8	56.0	56.6	58.9	59.9	60.9	61.8	56.5	50.9	56.3	58.9	5572	1483	7176	75.0	73.0	73.5	
06/13	54.2	53.3	52.0	54.5	55.7	-	59.1	60.5	61.9	63.5	57.0	50.3	57.4	61.4	5120	1765	7571	79.5	76.7	77.6	
06/14	51.4	50.6	52.5	54.9	55.7	56.5	59.0	60.4	61.6	63.3	56.7	50.2	57.2	62.2	5323	1840	7573	78.0	74.8	74.6	
06/15	51.7	50.8	52.5	54.2	55.4	56.0	58.4	59.7	60.9	62.5	56.4	50.6	56.9	61.0	5957	1229	7573	78.0	72.3	73.5	
06/16	51.6	50.5	52.6	52.6	53.9	54.4	57.4	58.9	60.2	62.0	57.1	50.7	58.6	62.3	5957	1229	7573	87.5	77.7	80.0	
06/17	51.3	50.6	52.6	52.8	53.9	54.5	57.0	58.4	59.5	61.2	58.0	51.1	59.4	64.3	7083	843	8076	↑	90.0	82.8	86.2
06/18	52.3	51.0	53.1	52.5	53.7	54.3	57.0	58.6	59.9	61.6	58.6	51.4	60.9	65.8	7079	728	8081	89.0	85.0	87.0	
06/19	51.9	50.4	53.1	52.8	53.8	54.4	57.0	58.4	59.8	61.6	58.4	51.5	61.0	66.9	6321	1278	8080	91.0	85.0	85.9	
06/20	51.4	50.4	53.2	53.3	54.4	55.0	57.4	58.7	60.1	61.7	57.9	51.6	61.2	66.7	6153	1599	8075	87.5	82.3	83.3	
06/21	51.2	50.3	53.4	52.8	54.0	54.6	57.4	58.9	60.1	61.8	55.6	51.6	61.1	66.9	6350	1566	8074	83.5	79.4	78.9	
06/22	50.9	50.9	53.7	52.5	53.7	54.3	56.9	58.5	59.7	61.5	54.1	51.7	61.0	66.3	6098	915	8024	82.0	78.0	76.7	
06/23	50.5	51.3	54.2	52.6	53.7	54.3	56.7	58.1	59.3	61.1	53.4	51.6	60.9	66.4	7895	1225	8052	80.0	77.1	76.0	
06/24	52.0	51.1	53.9	53.2	54.1	54.7	56.8	58.1	59.4	61.1	55.1	51.7	61.1	66.7	4895	1225	8052	81.5	77.0	76.1	
06/25	52.2	50.9	54.2	53.5	54.5	55.2	57.6	59.1	60.3	61.7	57.7	51.9	61.8	67.8	6525	1349	8047	86.5	82.1	79.9	
06/26	52.5	50.9	54.4	53.4	54.5	55.1	57.8	-	60.8	62.6	58.1	52.0	62.0	68.0	6556	1427	8050	↑	92.0	87.2	87.3
06/27	53.6	51.6	54.4	53.5	54.5	55.2	57.8	-	60.8	62.7	58.3	52.1	62.5	68.8	7560	375	8533	92.5	87.3	84.8	
06/28	53.3	51.8	54.6	54.1	54.9	55.5	57.9	59.1	60.8	62.7	58.6	52.4	63.1	69.4	7560	375	8533	88.5	85.1	82.5	
06/29	51.9	50.8	54.7	54.6	55.5	56.2	58.6	-	61.1	62.7	58.2	52.4	62.8	69.3	7043	1019	8518	89.5	84.5	83.1	
06/30	52.0	50.3	54.7	53.9	55.1	55.9	58.6	-	61.4	63.2	58.4	52.6	62.6	68.8	6040	1766	8524	90.5	85.4	83.7	
-																					
Jun	53.1	51.7	52.9	54.1	55.1	55.7	58.2	59.6	60.8	62.4	56.6	51.5	59.0	63.5	6271	1023	7693	82.4	78.2	78.1	

Total CFS	188134	30692	230788
Total AF	373156	60876	457759

Legend

- ? = 1-9 hours of data missing (Average includes estimations)
- ! = 10 or more hours of data missing (Average not calculated)
- # = Station out of service
- ↑ = Record high air temperature
- ↓ = Record low air temperature
- ☐ = Monthly Averages

Notes

- ¹ Temperatures are weighted averages based on individual penstock flow and temperature
- Highlighted cells in the TCD column indicate a TCD change was made on that day
- ² Current Sacramento River control point (see page 4 for more details)

D A T E	Redding (RDD) Daily Air Temperatures (°F)																																				
	Actual			Forecasted																																	
	Previous Day			Current Day			1 Day			2 Days			3 Days			4 Days			5 Days			6 Days			7 Days			8 Days			9 Days			10 Days			
	↓	↑	Avg	↓	↑	Avg	↓	↑	Avg	↓	↑	Avg	↓	↑	Avg	↓	↑	Avg	↓	↑	Avg	↓	↑	Avg	↓	↑	Avg	↓	↑	Avg	↓	↑	Avg	↓	↑	Avg	
06/01	79	109	94.0	68	108	88.0	71	105	88.0	68	104	86.0	66	101	83.5	65	101	83.0	59	96	77.5	56	87	71.5	55	82	68.5	55	89	72.0	58	88	73.0	58	87	72.5	
06/02	67	107	87.0	70	103	86.5	66	104	85.0	67	101	84.0	65	100	82.5	61	94	77.5	55	86	70.5	52	83	67.5	59	91	75.0	59	89	74.0	63	86	74.5	60	90	75.0	
06/03	69	103	86.0	68	104	86.0	66	103	84.5	64	100	82.0	62	96	79.0	57	89	73.0	54	86	70.0	53	86	69.5	54	82	68.0	55	88	71.5	61	88	74.5	61	87	74.0	
06/04	66	105	85.5	68	102	85.0	65	100	82.5	61	94	77.5	56	88	72.0	51	82	66.5	52	85	68.5	54	89	71.5	54	88	71.0	59	90	74.5	61	88	74.5	62	91	76.5	
06/05	67	103	85.0	66	99	82.5	62	93	77.5	55	85	70.0	50	78	64.0	50	78	64.0	51	81	66.0	53	82	67.5	55	79	67.0	60	87	73.5	60	87	73.5	60	93	76.5	
06/06	66	100	83.0	71	90	80.5	56	85	70.5	48	77	62.5	48	76	62.0	47	79	63.0	53	78	65.5	56	81	68.5	62	85	73.5	59	86	72.5	62	90	76.0	62	94	78.0	
06/07	71	93	82.0	62	85	73.5	49	75	62.0	48	76	62.0	47	78	62.5	53	76	64.5	55	81	68.0	58	85	71.5	58	88	73.0	60	95	77.5	64	91	77.5	63	93	78.0	
06/08	58	86	72.0	57	74	65.5	46	75	60.5	46	78	62.0	53	76	64.5	56	92	74.0	62	94	78.0	61	92	76.5	64	96	80.0	60	93	76.5	63	95	79.0	65	97	81.0	
06/09	56	76	66.0	54	75	64.5	45	76	60.5	52	75	63.5	54	89	71.5	60	94	77.0	61	91	76.0	58	90	74.0	61	94	77.5	64	101	82.5	66	97	81.5	65	97	81.0	
06/10	54	77	65.5	56	76	66.0	53	79	66.0	57	88	72.5	60	90	75.0	61	89	75.0	57	93	75.0	62	103	82.5	67	106	86.5	70	105	87.5	70	100	85.0	67	98	82.5	
06/11	55	76	65.5	63	78	70.5	58	88	73.0	62	91	76.5	61	88	74.5	57	90	73.5	60	102	81.0	65	108	86.5	68	107	87.5	69	104	86.5	69	100	84.5	67	98	82.5	
06/12	62	80	71.0	60	90	75.0	62	92	77.0	61	88	74.5	56	90	73.0	62	103	82.5	66	109	87.5	70	109	89.5	67	97	82.0	64	97	80.5	65	94	79.5	64	96	80.0	
06/13	60	90	75.0	66	92	79.0	61	87	74.0	55	90	72.5	62	104	83.0	69	110	89.5	72	111	91.5	72	109	90.5	69	102	85.5	66	97	81.5	68	97	82.5	66	96	81.0	
06/14	65	94	79.5	68	85	76.5	53	89	71.0	62	103	82.5	67	110	88.5	70	111	90.5	70	108	89.0	70	105	87.5	73	104	88.5	69	101	85.0	68	96	82.0	66	96	81.0	
06/15	68	88	78.0	57	88	72.5	63	104	83.5	67	111	89.0	70	110	90.0	70	108	89.0	70	107	88.5	70	103	86.5	67	97	82.0	66	94	80.0	67	91	79.0	66	95	80.5	
06/16	68	88	78.0	72	104	88.0	68	111	89.5	70	111	90.5	72	109	90.5	70	107	88.5	70	102	86.0	65	95	80.0	64	94	79.0	65	92	78.5	66	95	80.5	67	98	82.5	
06/17	72	103	87.5	75	111	93.0	73	111	92.0	72	109	90.5	71	107	89.0	70	102	86.0	66	95	80.5	64	94	79.0	65	93	79.0	65	97	81.0	68	98	83.0	68	97	82.5	
06/18	70	110	90.0	68	112	90.0	74	110	92.0	72	109	90.5	69	100	84.5	64	92	78.0	63	93	78.0	63	95	79.0	70	104	87.0	74	103	88.5	72	100	86.0	69	99	84.0	
06/19	68	110	89.0	74	109	91.5	72	108	90.0	70	101	85.5	65	92	78.5	63	92	77.5	64	99	81.5	68	107	87.5	71	107	89.0	69	104	86.5	68	101	84.5	67	97	82.0	
06/20	72	110	91.0	69	108	88.5	69	102	85.5	67	96	81.5	64	93	78.5	65	101	83.0	70	109	89.5	73	108	90.5	68	103	85.5	67	103	85.0	70	100	85.0	67	98	82.5	
06/21	67	108	87.5	67	100	83.5	65	96	80.5	65	95	80.0	65	99	82.0	68	100	84.0	71	107	89.0	73	110	91.5	72	112	92.0	72	105	88.5	70	100	85.0	70	100	85.0	
06/22	67	100	83.5	70	96	83.0	64	96	80.0	65	98	81.5	68	103	85.5	71	110	90.5	78	115	96.5	76	110	93.0	74	111	92.5	71	107	89.0	69	102	85.5	70	101	85.5	
06/23	69	95	82.0	65	94	79.5	64	97	80.5	67	104	85.5	71	109	90.0	74	112	93.0	74	110	92.0	73	109	91.0	69	107	88.0	70	103	86.5	71	100	85.5	68	99	83.5	
06/24	64	96	80.0	66	97	81.5	66	103	84.5	70	110	90.0	74	110	92.0	73	106	89.5	71	108	89.5	72	108	90.0	71	110	90.5	69	102	85.5	68	98	83.0	67	96	81.5	
06/25	64	99	81.5	69	104	86.5	70	111	90.5	75	111	93.0	73	106	89.5	70	105	87.5	71	105	88.0	72	104	88.0	72	110	91.0	69	102	85.5	70	99	84.5	69	99	84.0	
06/26	68	105	86.5	71	112	91.5	78	112	95.0	75	107	91.0	71	106	88.5	71	107	89.0	72	105	88.5	72	104	88.0	74	108	91.0	72	103	87.5	72	102	87.0	70	100	85.0	
06/27	71	113	92.0	75	112	93.5	75	108	91.5	71	109	90.0	72	107	89.5	72	106	89.0	73	104	88.5	73	105	89.0	72	106	89.0	71	104	87.5	71	99	85.0	66	97	81.5	
06/28	75	110	92.5	74	106	90.0	69	108	88.5	70	106	88.0	70	103	86.5	71	105	88.0	72	106	89.0	71	104	87.5	71	102	86.5	67	103	85.0	68	97	82.5	66	97	81.5	
06/29	73	104	88.5	72	107	89.5	70	105	87.5	69	102	85.5	69	103	86.0	70	102	86.0	68	101	84.5	66	99	82.5	68	103	85.5	67	102	84.5	68	96	82.0	67	97	82.0	
06/30	71	108	89.5	77	106	91.5	69	102	85.5	69	104	86.5	70	106	88.0	70	103	86.5	68	103	85.5	68	104	86.0	68	101	84.5	68	102	85.0	70	99	84.5	68	100	84.0	
-																																					

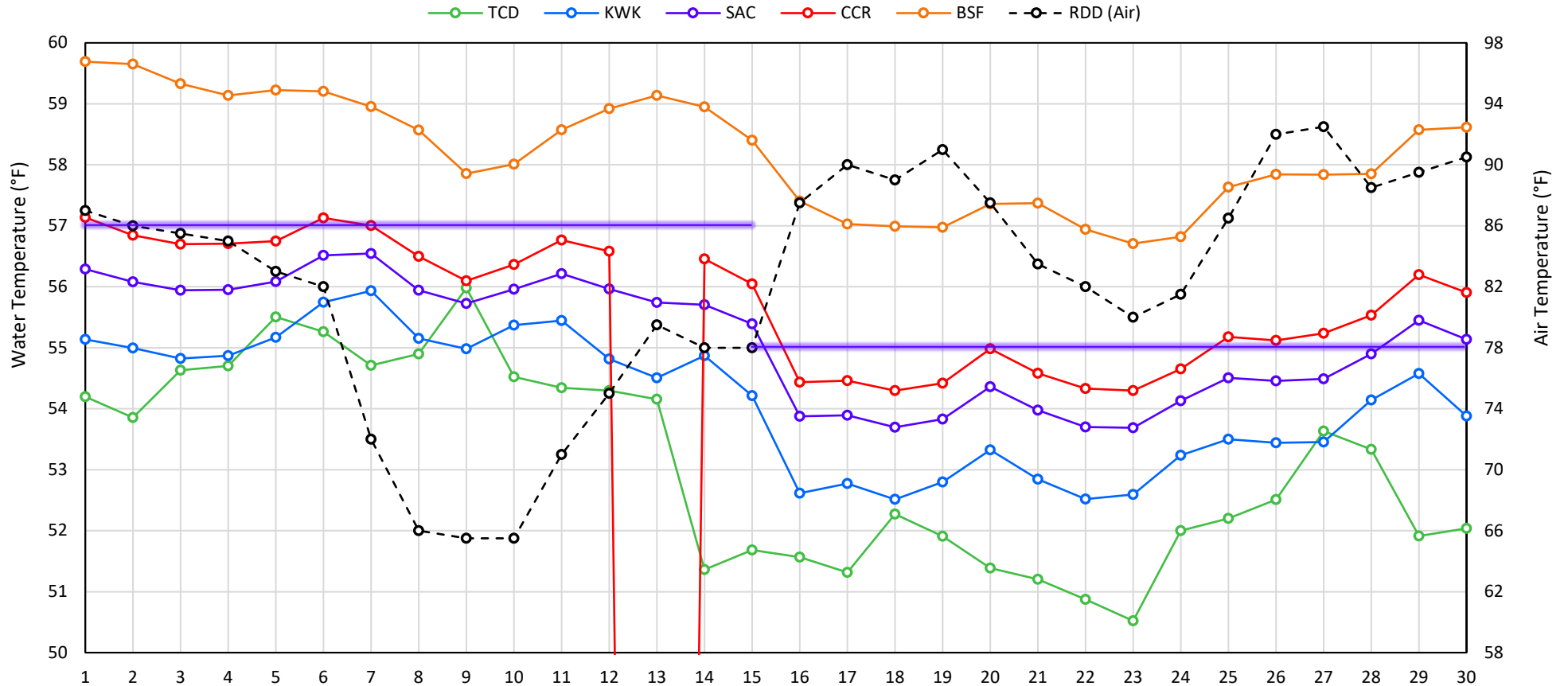
Web Links

- [10-Day Min/Max Forecast](#)
- [Previous Days Min/Max Actuals](#)

Legend

- NR = Forecasted temperatures not recorded
- 100** = Previous day actual temperatures in red and bolded indicate a record temperature for that date

Mean Daily Temperatures



Station Details

Code	Body of Water	Location ¹	CDEC Link
TCD	N/A	Shasta Power Plant	N/A
SHD	Sacramento River	0.3 miles downstream of Shasta Power Plant	Click Here
SPP	N/A	Spring Creek Power Plant	N/A
KWK	Sacramento River	0.8 miles downstream of Keswick Dam	Click Here
SAC	Sacramento River	4.8 miles downstream of Keswick Dam	Click Here
CCR	Sacramento River	9.7 miles downstream of Keswick Dam	Click Here
BSF	Sacramento River	25 miles downstream of Keswick Dam	Click Here
JLF	Sacramento River	34 miles downstream of Keswick Dam	Click Here
BND	Sacramento River	41 miles downstream of Keswick Dam	Click Here
RDB	Sacramento River	58 miles downstream of Keswick Dam	Click Here
IGO	Clear Creek	7.3 miles downstream of Whiskeytown Dam	Click Here
LWS	Trinity River	1.1 miles downstream of Lewiston Dam	Click Here
DGC	Trinity River	19 miles downstream of Lewiston Dam	Click Here
NFH	Trinity River	38 miles downstream of Lewiston Dam	Click Here

Water Right Temperature Control Points

River	Point	Temp. (°F)	Begin Date	End Date
Sacramento	CCR	56	09/21/2020	04/18/2021
Sacramento	CCR	60	04/18/2021	05/17/2021
Sacramento	SAC	57	05/17/2021	06/15/2021
Sacramento	SAC	55	06/15/2021	TBD
Trinity	DGC	56	09/15/2021	10/01/2021
Trinity	NFH	56	10/01/2021	12/31/2021

Notes

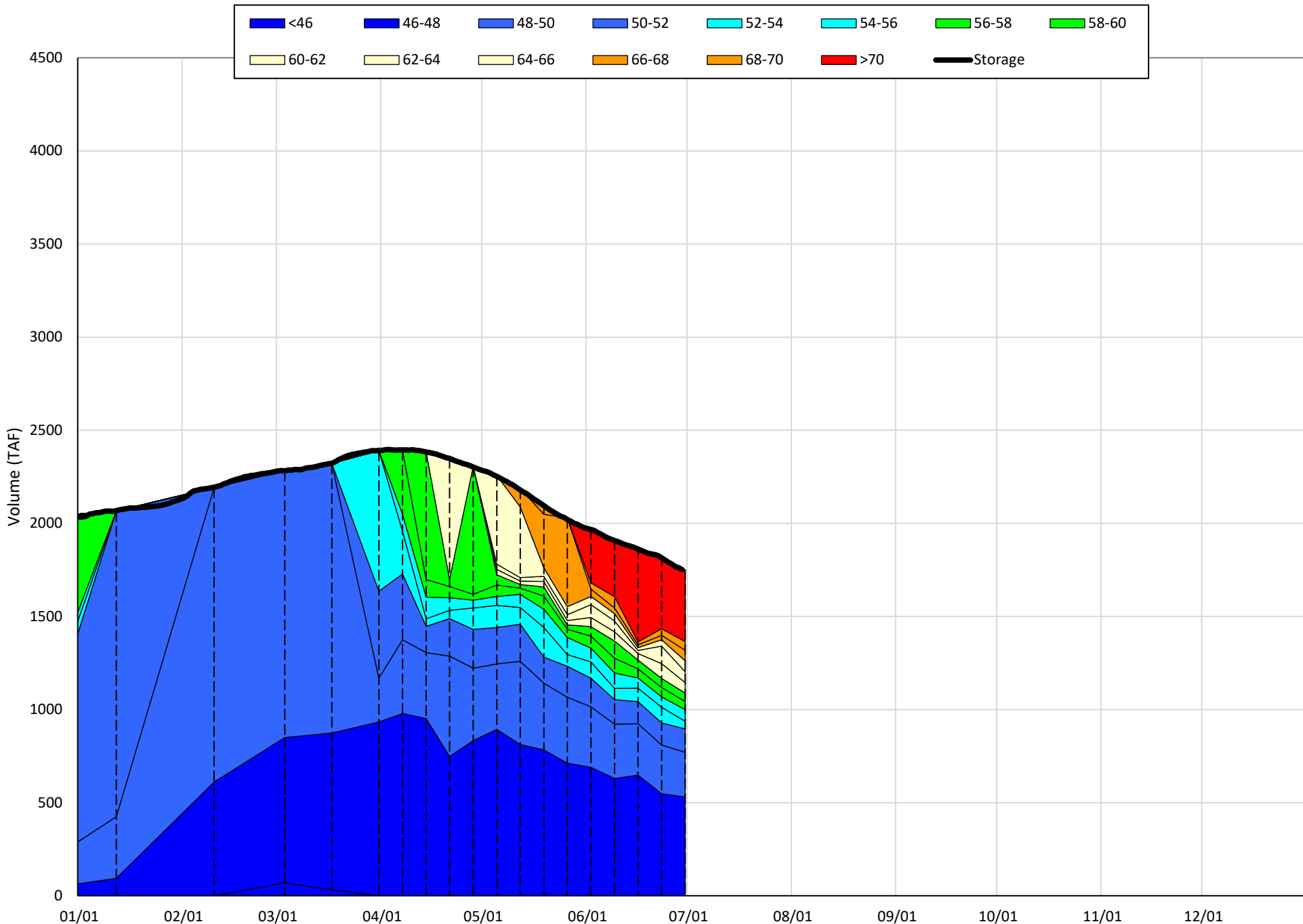
¹ Distances are approximate

Shasta Lake Isothermobaths & Cold Water Pool Statistics

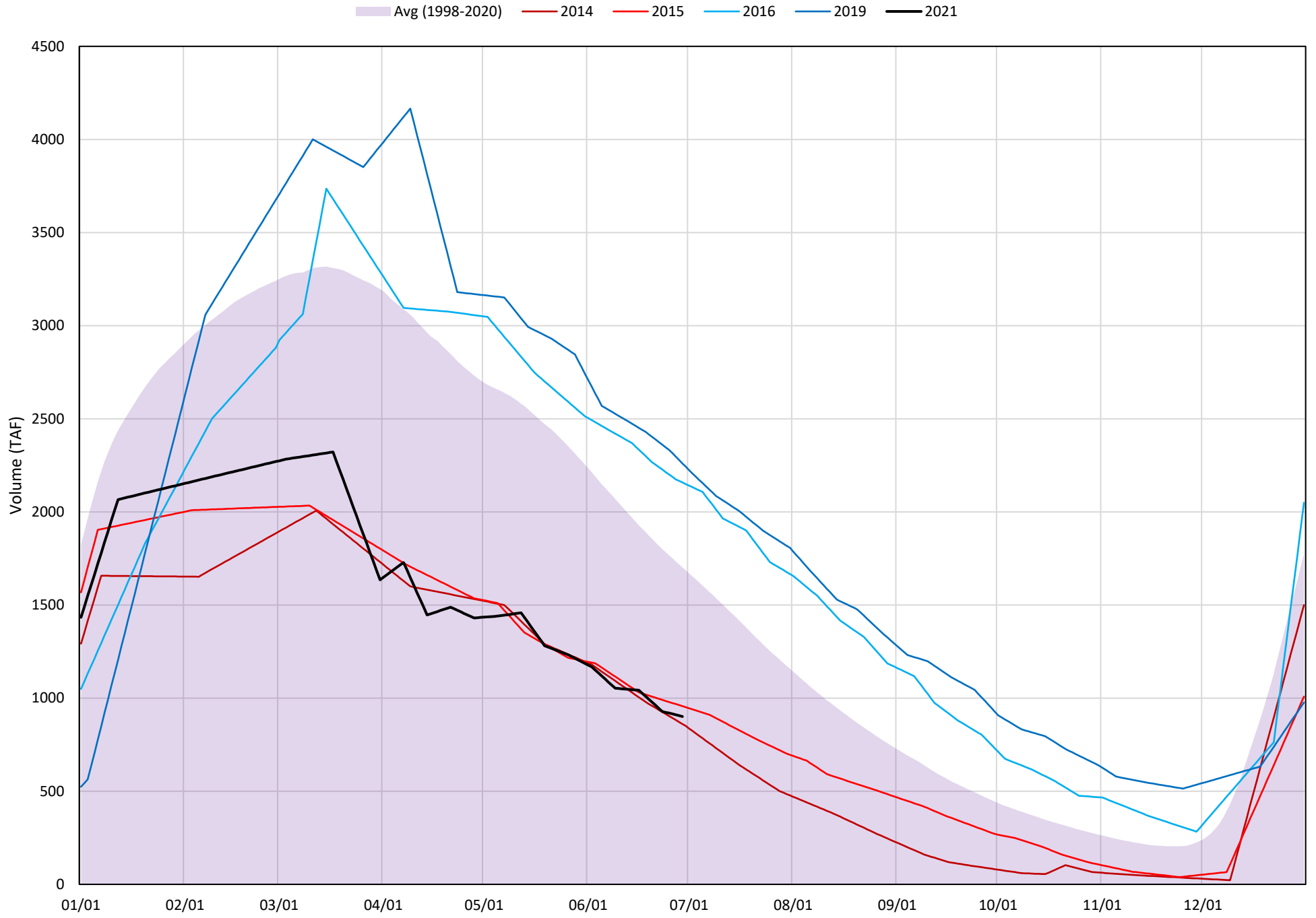
2021

Page	Description
6	- Shasta Lake Isothermobaths Plot
7	- Shasta Lake Cold Water Pool Volume $\leq 52^{\circ}\text{F}$
8	- Shasta Lake Cold Water Pool Volume $\leq 50^{\circ}\text{F}$
9	- Shasta Lake Cold Water Pool Volume $\leq 48^{\circ}\text{F}$
10	- Shasta Lake Cold Water Pool Volume $\leq 52^{\circ}\text{F}$ - Percent Exceedances
11	- Shasta Lake Cold Water Pool Volume $\leq 50^{\circ}\text{F}$ - Percent Exceedances
12	- Shasta Lake Cold Water Pool Volume $\leq 48^{\circ}\text{F}$ - Percent Exceedances
13	- Shasta Lake Cold Water Pool Comparison by Year

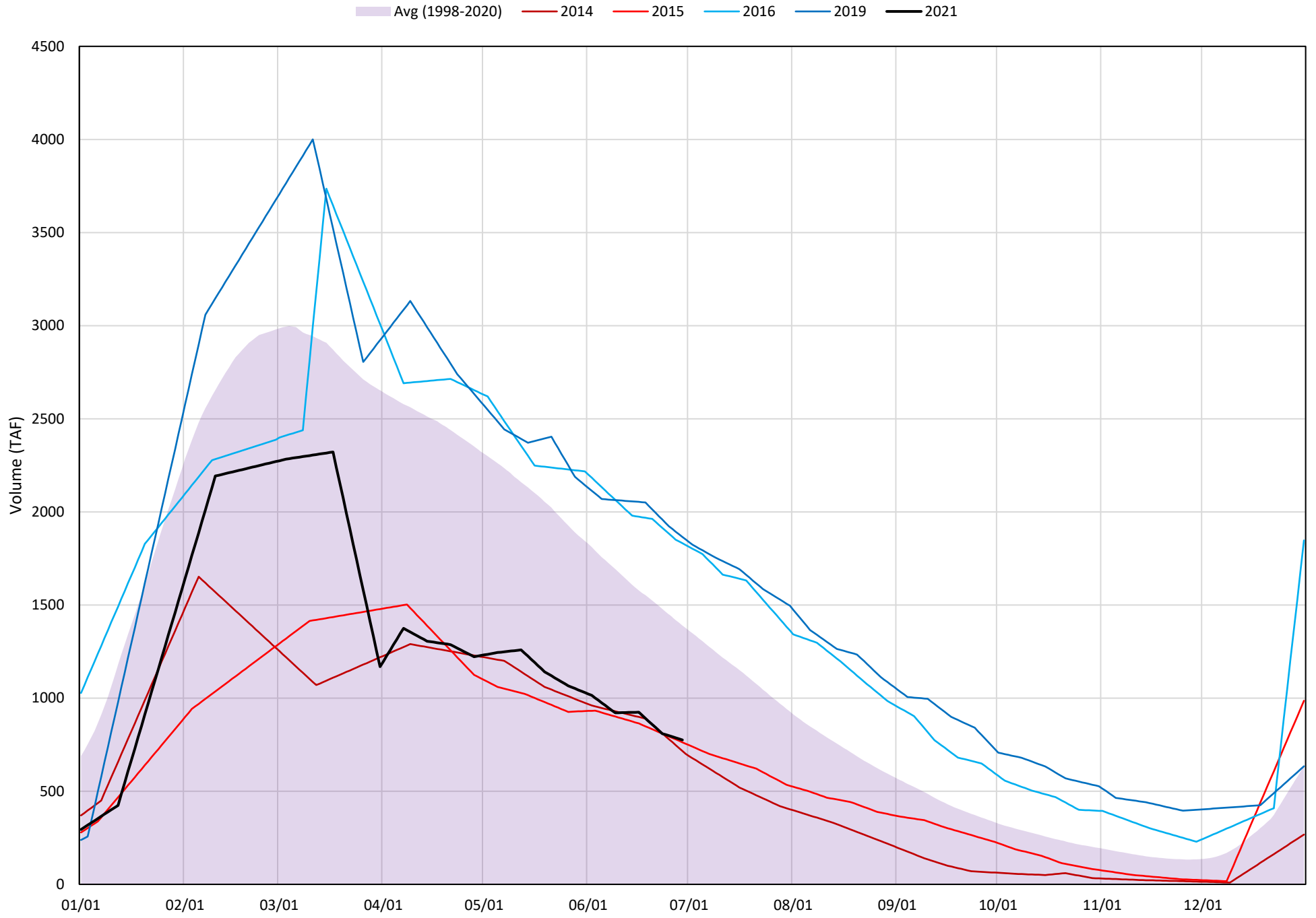
Shasta Lake Isothermobaths Plot - 2021



Shasta Lake Cold Water Pool Volume $\leq 52^{\circ}\text{F}$

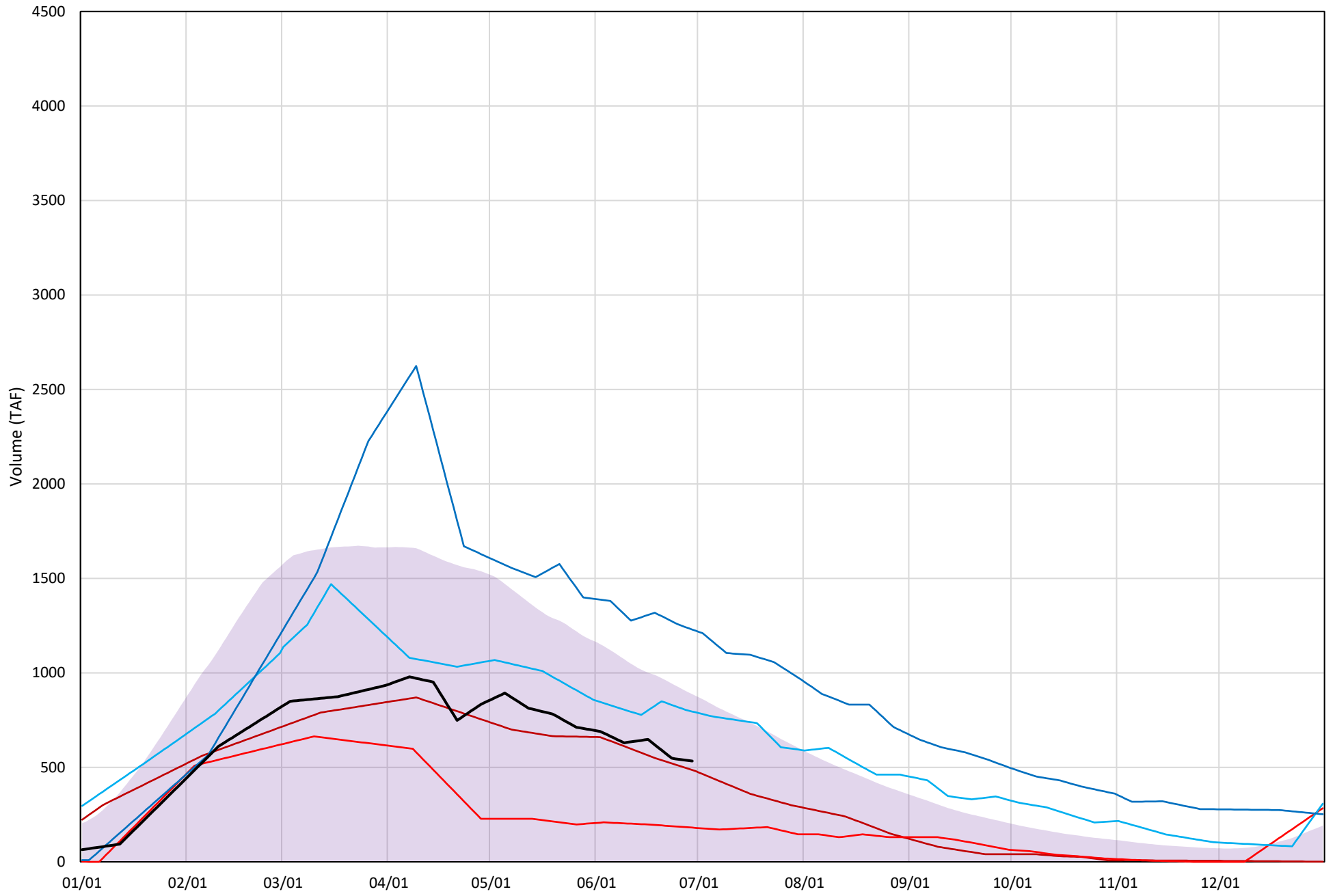


Shasta Lake Cold Water Pool Volume $\leq 50^{\circ}\text{F}$



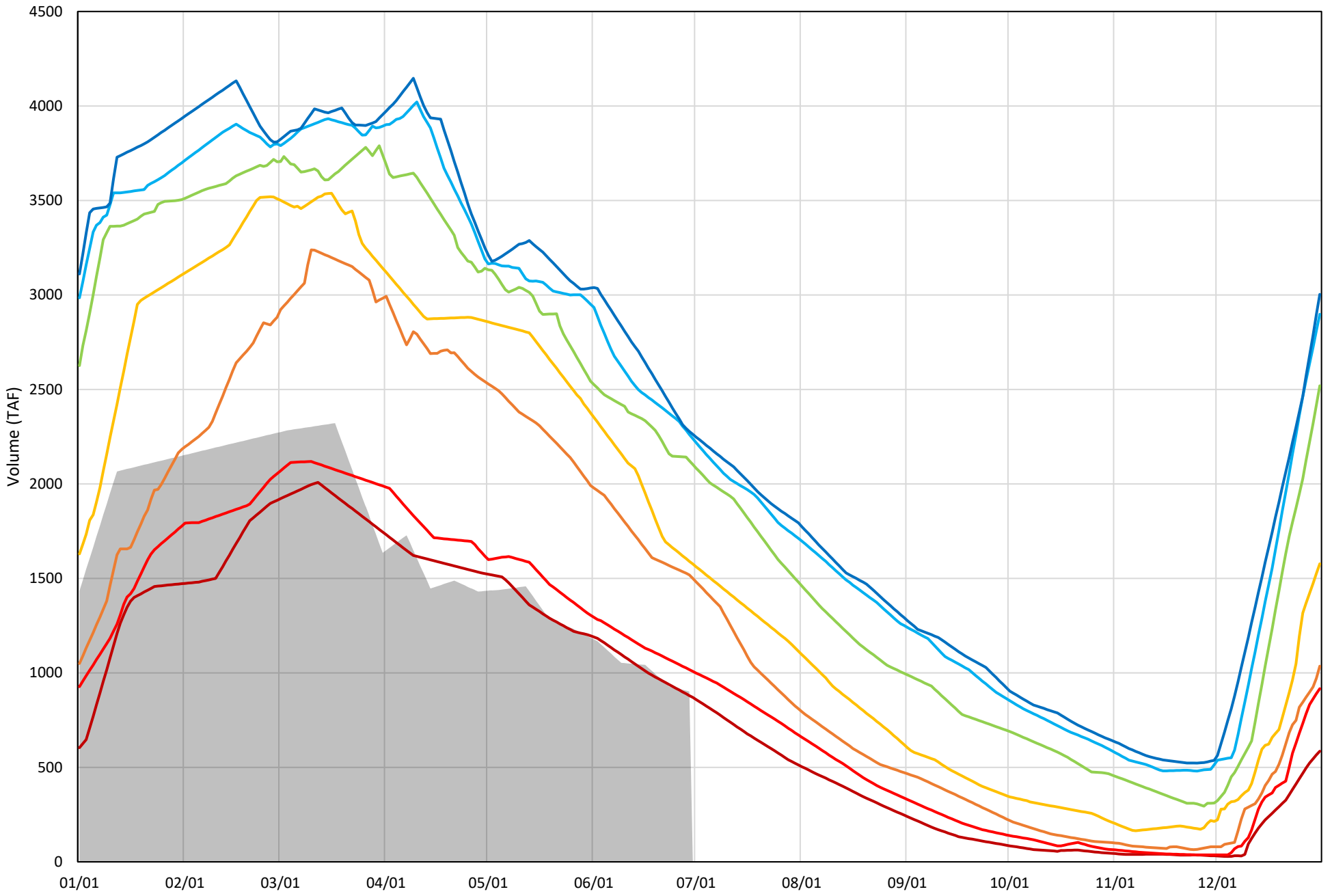
Shasta Lake Cold Water Pool Volume $\leq 48^\circ\text{F}$

Avg (1998-2020) 2014 2015 2016 2019 2021



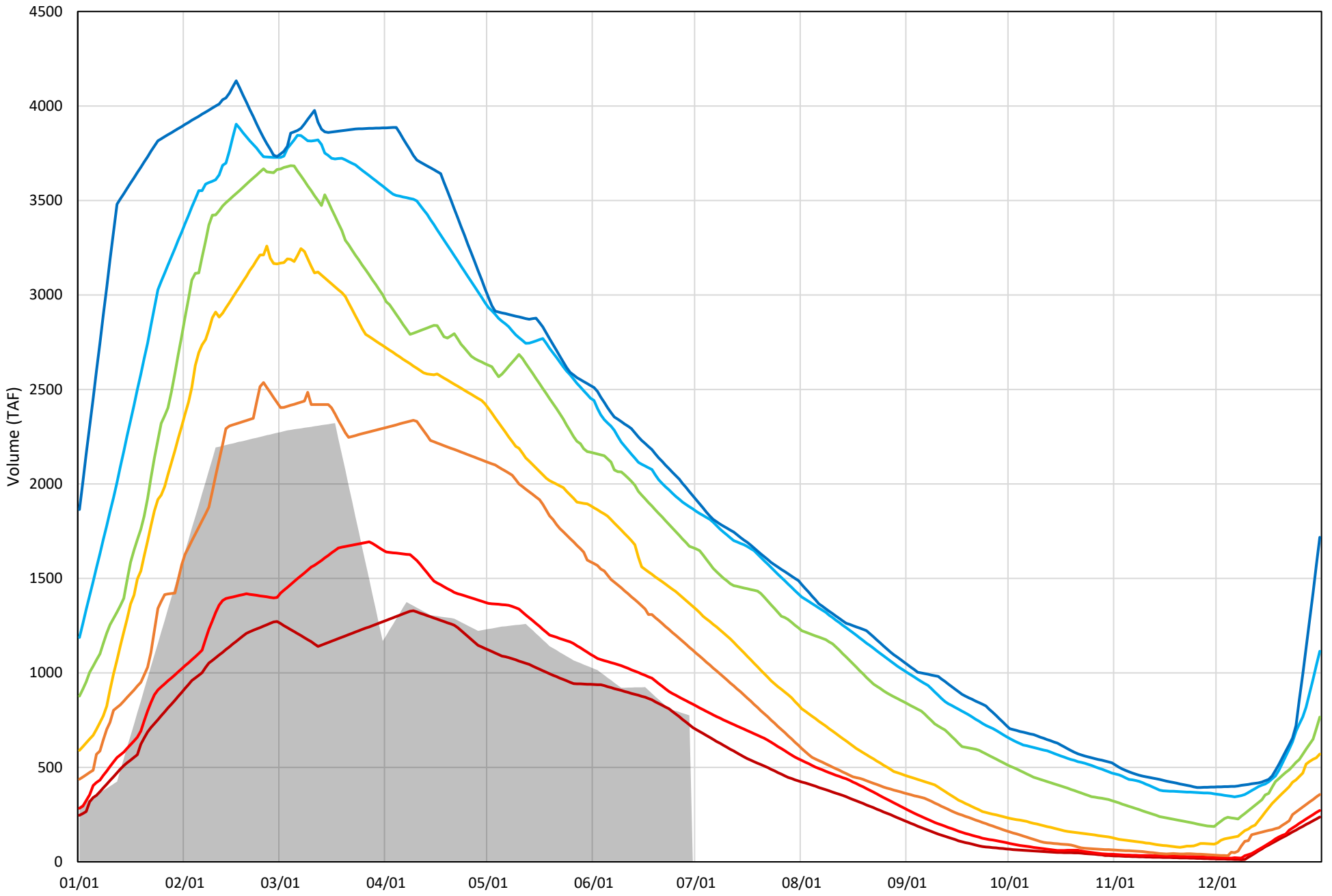
Shasta Lake Cold Water Pool Volume $\leq 52^{\circ}\text{F}$ - Percent Exceedances (1998-2020)

2021 95 90 75 50 25 10 5



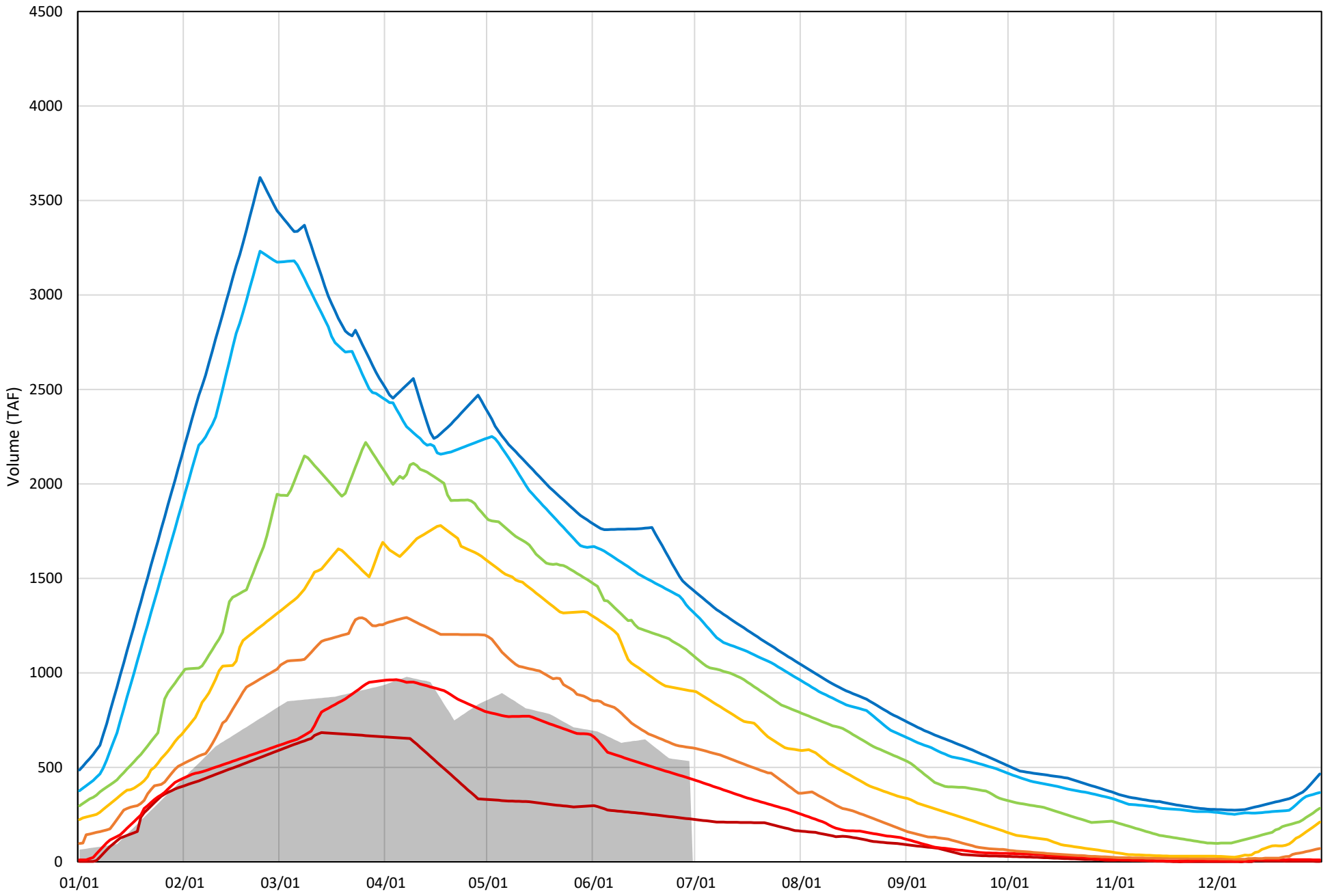
Shasta Lake Cold Water Pool Volume $\leq 50^{\circ}\text{F}$ - Percent Exceedances (1998-2020)

2021 95 90 75 50 25 10 5



Shasta Lake Cold Water Pool Volume $\leq 48^{\circ}\text{F}$ - Percent Exceedances (1998-2020)

2021 95 90 75 50 25 10 5



Shasta Lake Cold Water Pool Comparison by Year (for Specified Date)

Jun-30 2021	Δ TAF				% Δ			
	≤52°	≤50°	≤48°	Abs. Avg.	≤52°	≤50°	≤48°	Abs. Avg.
1998	953	558	154	555	106	72	29	69
1999	1069	941	882	964	119	121	165	135
2000	650	396	35	361	72	51	7	43
2001	624	592	575	597	69	76	108	84
2002	921	813	581	772	102	105	109	105
2003	689	189	-120	333	76	24	-23	41
2004	486	360	305	384	54	46	57	53
2005	618	402	54	358	69	52	10	44
2006	1092	852	518	821	121	110	97	109
2007	637	602	529	589	71	78	99	83
2008	207	229	325	254	23	30	61	38
2009	369	306	373	350	41	40	70	50
2010	1249	894	517	887	139	115	97	117
2011	1381	1113	931	1142	153	144	175	157
2012	1360	1201	695	1086	151	155	130	145
2013	618	542	445	535	69	70	83	74
2014	-40	-60	-47	49	-4	-8	-9	7
2015	56	-13	-352	140	6	-2	-66	25
2016	1257	1056	262	858	139	136	49	108
2017	1222	879	550	883	136	113	103	117
2018	995	749	161	635	110	97	30	79
2019	1360	1090	696	1049	151	141	131	141
2020	654	438	72	388	73	57	13	48
2021	0	0	0	0	0	0	0	0

Historic - Current

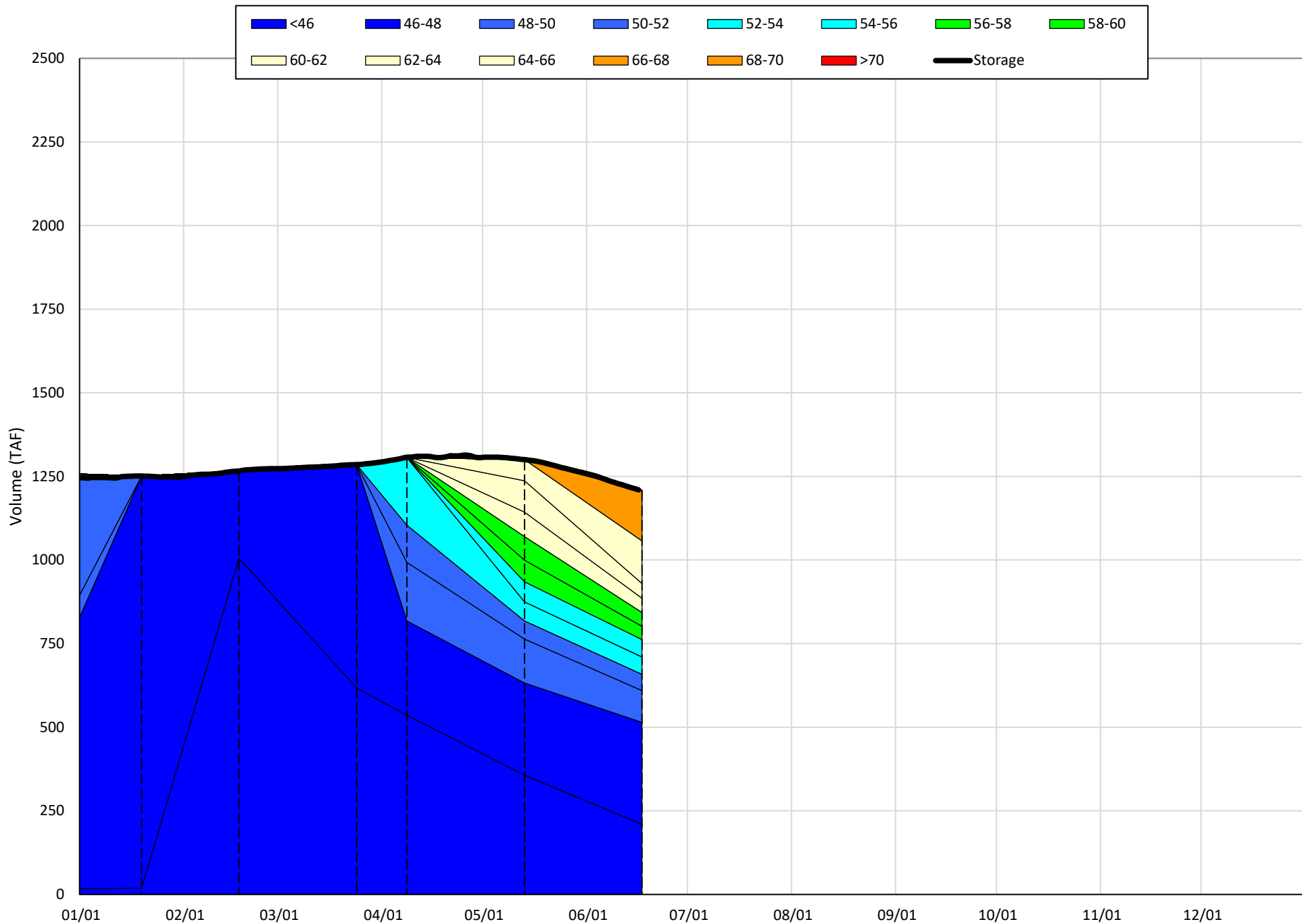
(Historic - Current) / Current

Trinity Lake Isothermobaths & Cold Water Pool Statistics

2021

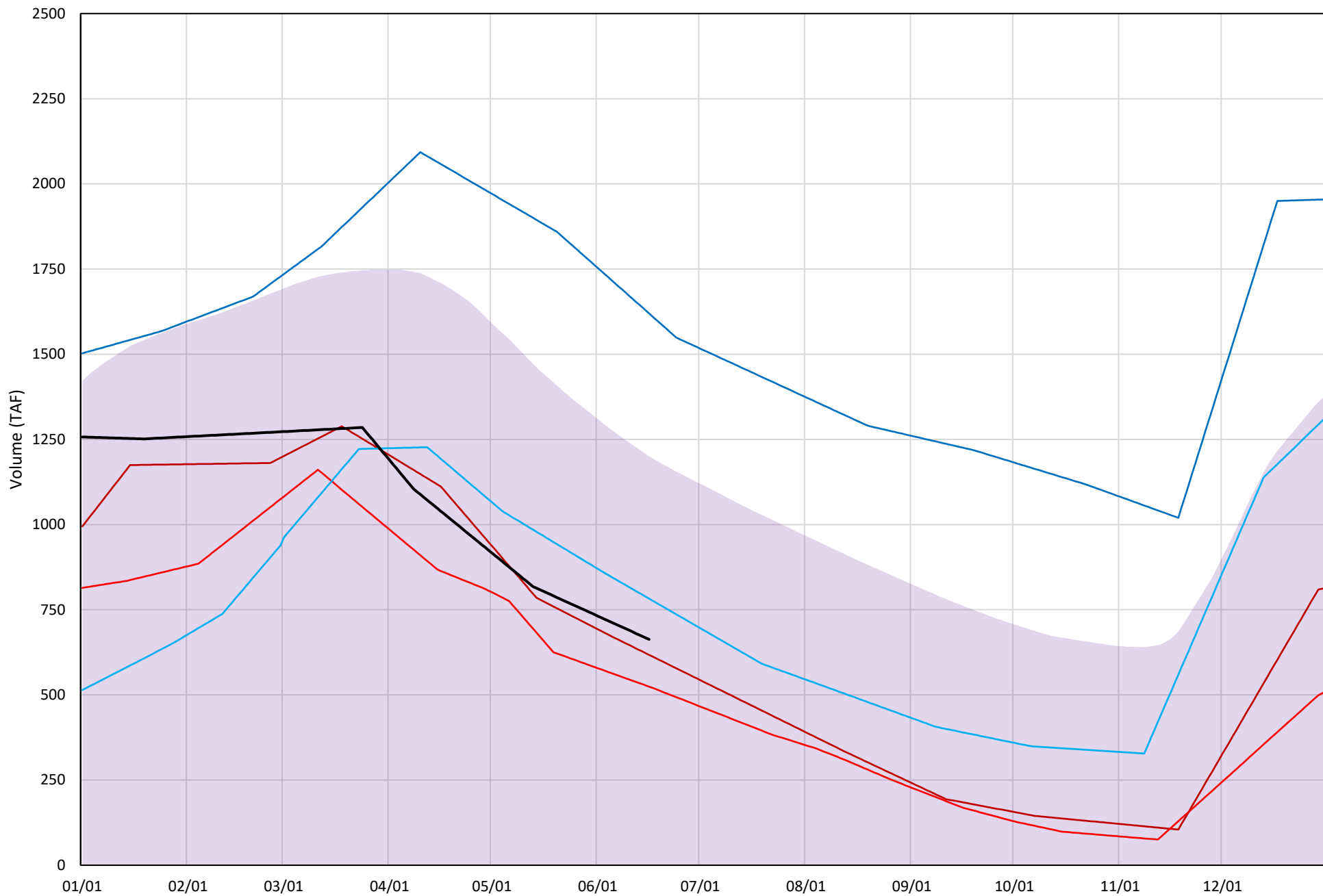
Page	Description
15	- Trinity Lake Isothermobaths Plot
16	- Trinity Lake Cold Water Pool Volume $\leq 52^{\circ}\text{F}$
17	- Trinity Lake Cold Water Pool Volume $\leq 50^{\circ}\text{F}$
18	- Trinity Lake Cold Water Pool Volume $\leq 48^{\circ}\text{F}$
19	- Trinity Lake Cold Water Pool Volume $\leq 52^{\circ}\text{F}$ - Percent Exceedances
20	- Trinity Lake Cold Water Pool Volume $\leq 50^{\circ}\text{F}$ - Percent Exceedances
21	- Trinity Lake Cold Water Pool Volume $\leq 48^{\circ}\text{F}$ - Percent Exceedances
22	- Trinity Lake Cold Water Pool Comparison by Year

Trinity Lake Isothermobaths Plot - 2021



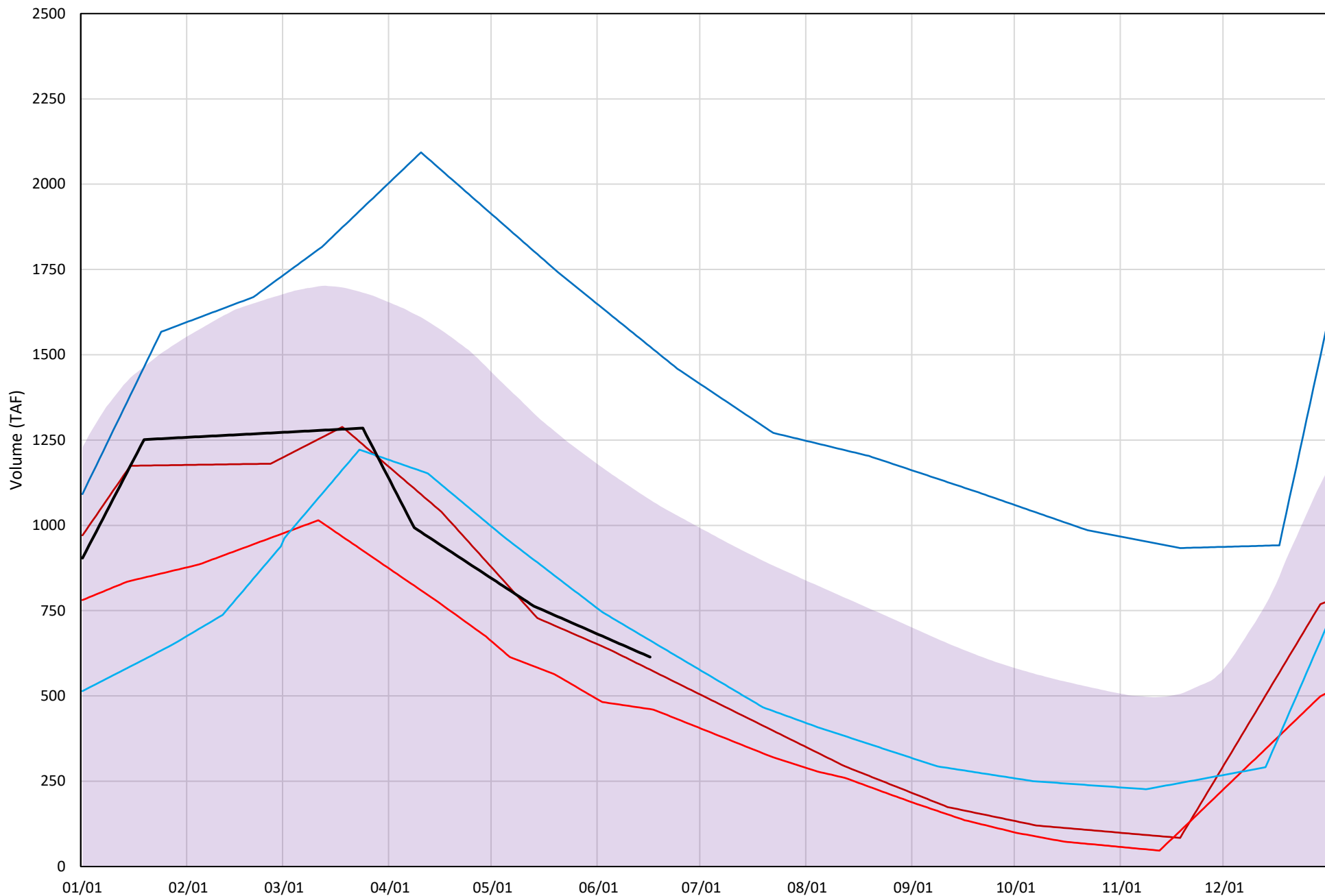
Trinity Lake Cold Water Pool Volume $\leq 52^{\circ}\text{F}$

Avg (2000-2020) 2014 2015 2016 2019 2021



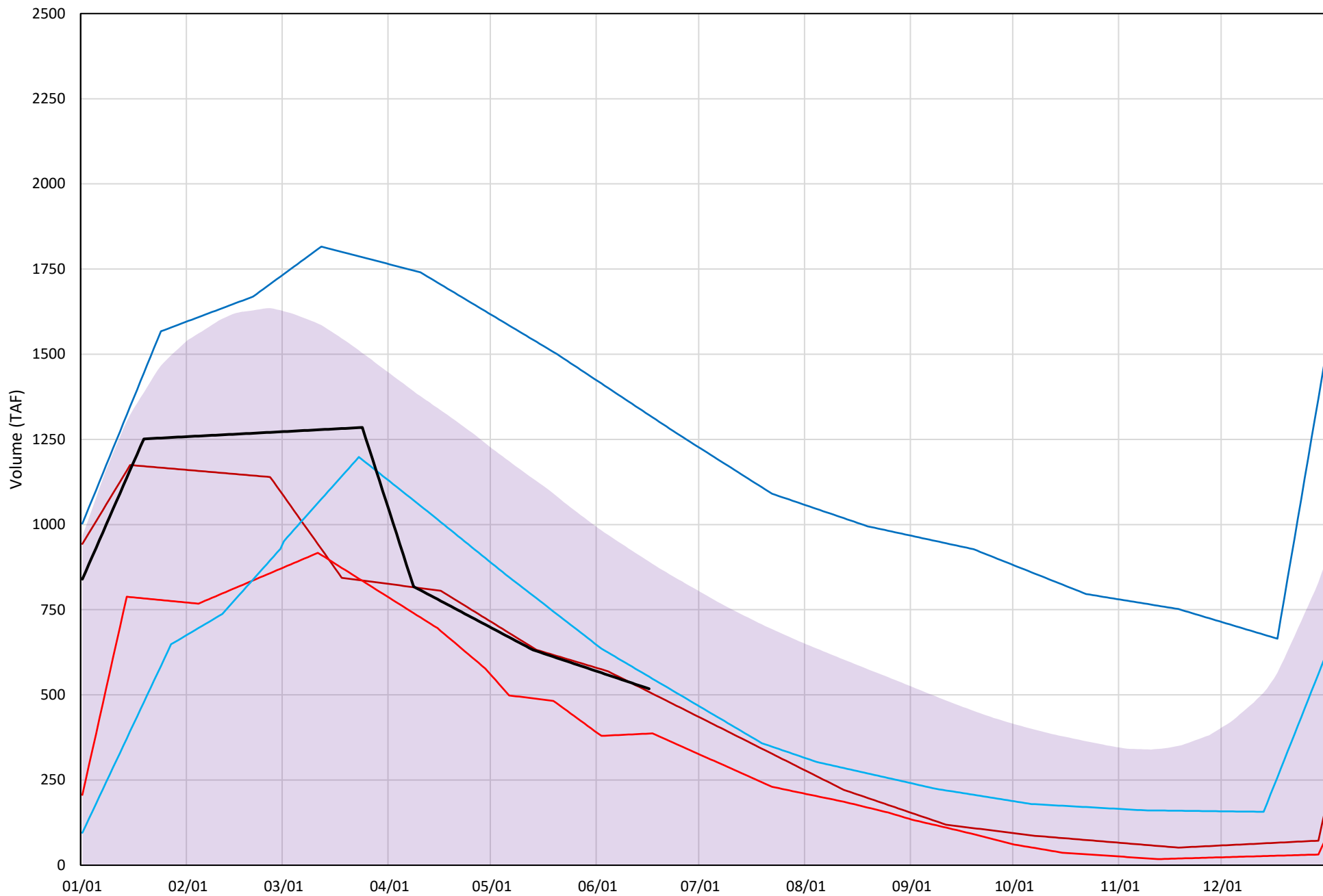
Trinity Lake Cold Water Pool Volume $\leq 50^{\circ}\text{F}$

Avg (2000-2020) 2014 2015 2016 2019 2021

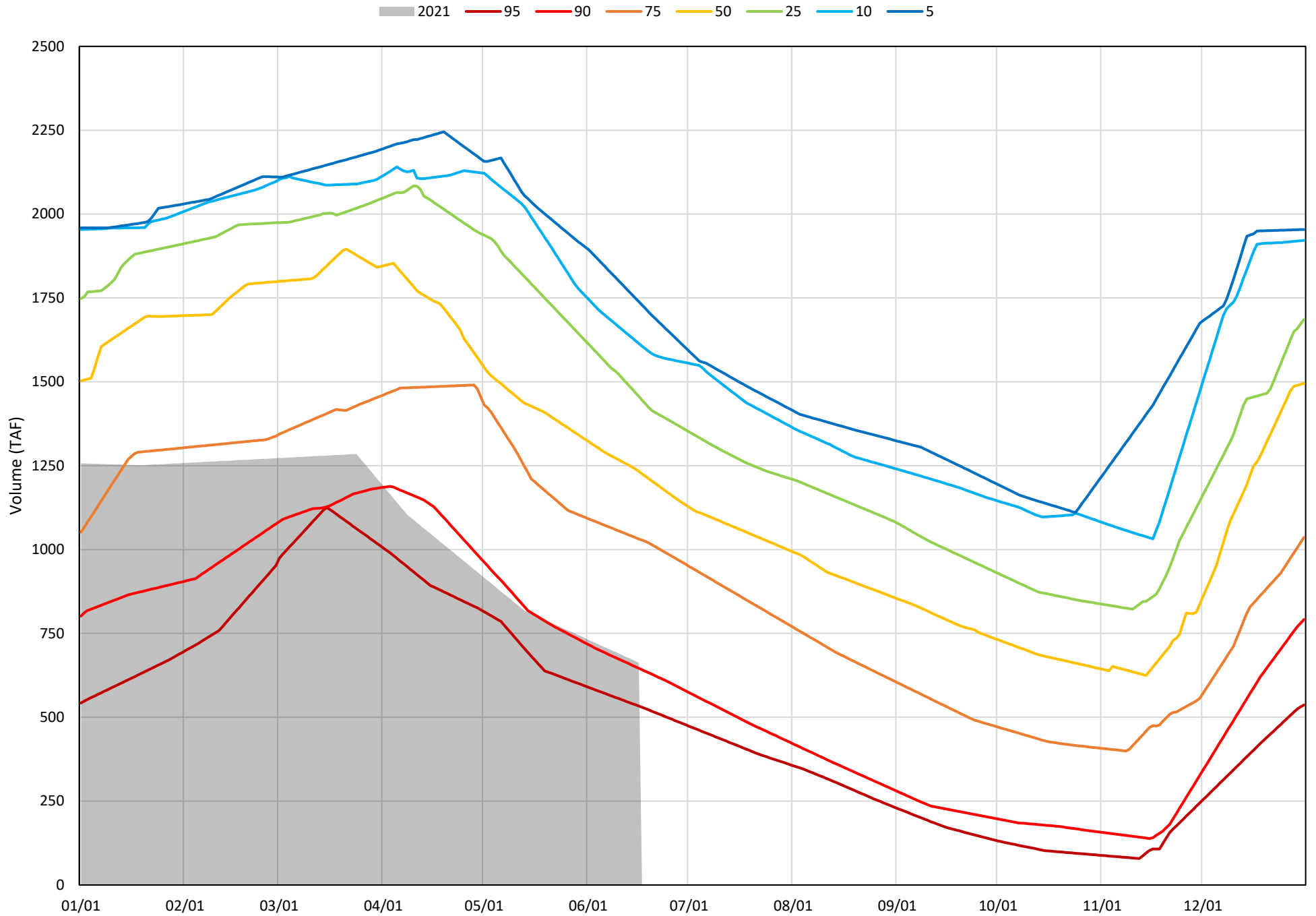


Trinity Lake Cold Water Pool Volume $\leq 48^{\circ}\text{F}$

Avg (2000-2020) 2014 2015 2016 2019 2021

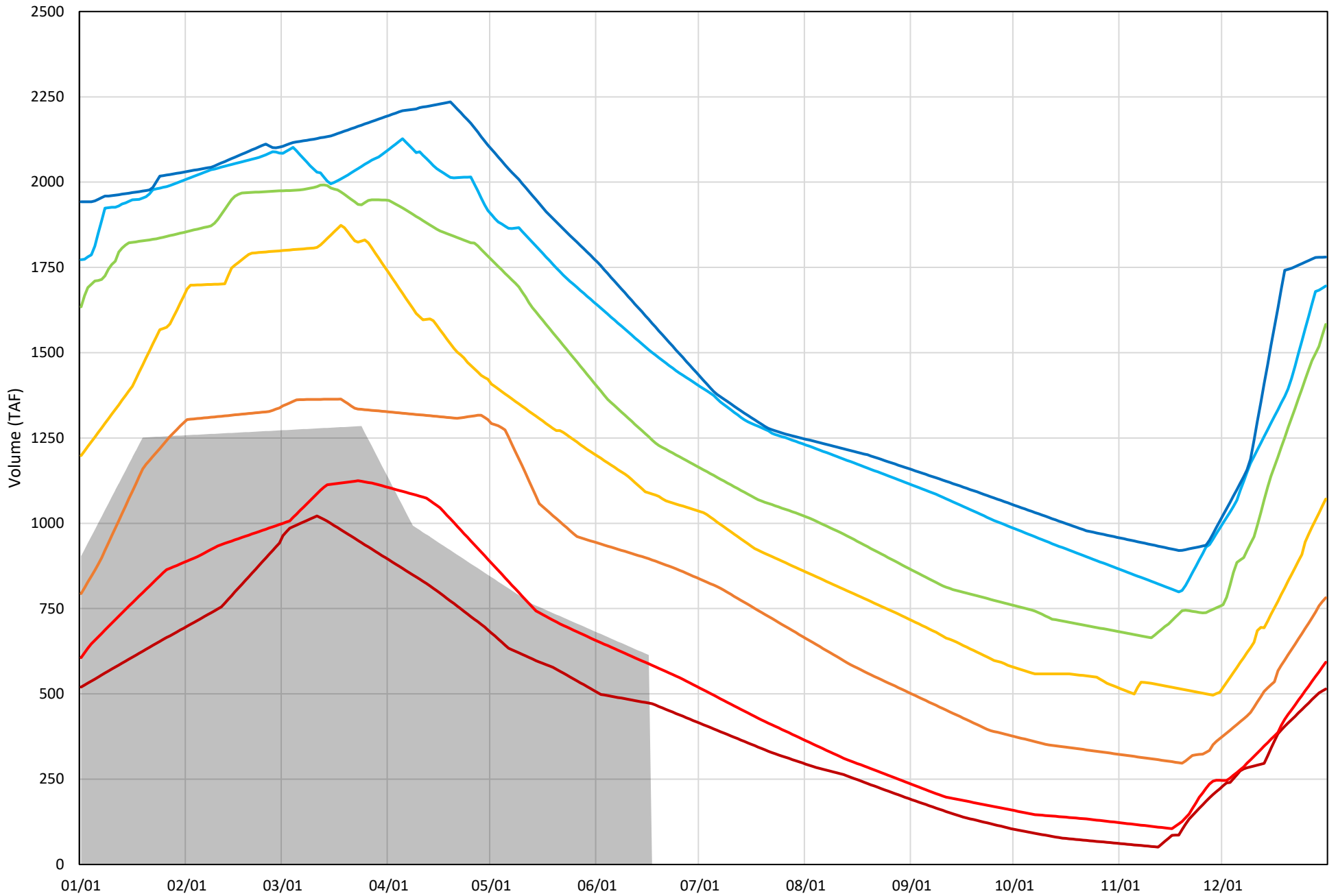


Trinity Lake Cold Water Pool Volume $\leq 52^{\circ}\text{F}$ - Percent Exceedances (2000-2020)

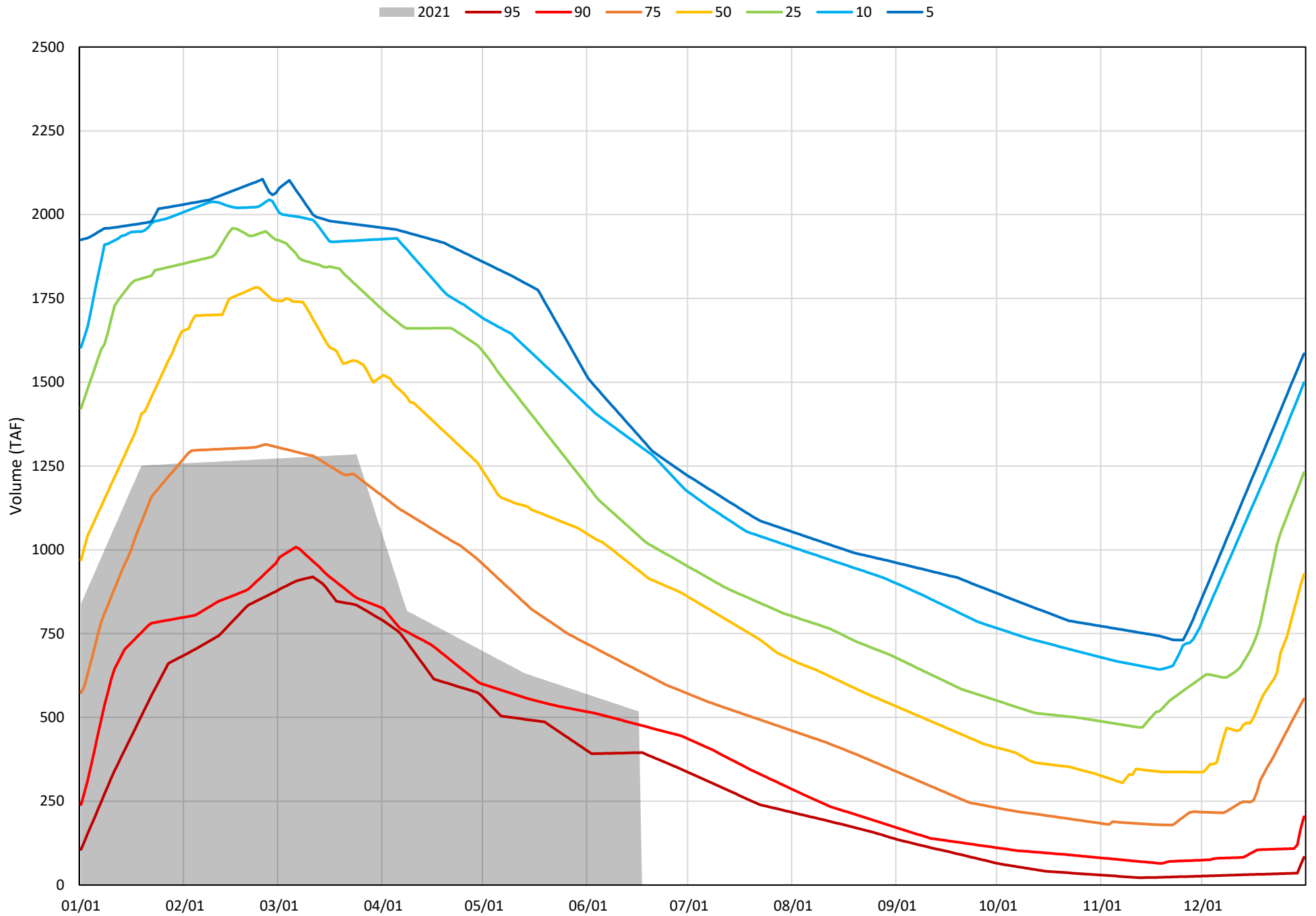


Trinity Lake Cold Water Pool Volume ≤50°F - Percent Exceedances (2000-2020)

2021 95 90 75 50 25 10 5



Trinity Lake Cold Water Pool Volume $\leq 48^{\circ}\text{F}$ - Percent Exceedances (2000-2020)



Trinity Cold Water Pool Comparison by Year (for Specified Date)

Jun-17 2021	Δ TAF				% Δ			
	≤52°	≤50°	≤48°	Abs. Avg.	≤52°	≤50°	≤48°	Abs. Avg.
2000	658	568	495	574	99	93	96	96
2001	570	484	433	496	86	79	84	83
2002	490	462	420	457	74	75	81	77
2003	931	693	534	720	141	113	103	119
2004	605	531	396	511	91	87	77	85
2005	668	475	238	461	101	77	46	75
2006	1090	992	825	969	164	162	159	162
2007	511	468	471	483	77	76	91	81
2008	300	220	89	203	45	36	17	33
2009	98	18	-47	55	15	3	-9	9
2010	437	345	153	312	66	56	30	51
2011	923	833	706	821	139	136	136	137
2012	869	834	757	820	131	136	146	138
2013	449	408	325	394	68	66	63	66
2014	-45	-37	-9	31	-7	-6	-2	5
2015	-139	-153	-131	141	-21	-25	-25	24
2016	120	49	35	68	18	8	7	11
2017	719	586	513	606	108	95	99	101
2018	573	546	498	539	86	89	96	90
2019	957	910	803	890	144	148	155	149
2020	506	446	332	428	76	73	64	71
2021	0	0	0	0	0	0	0	0

Historic - Current

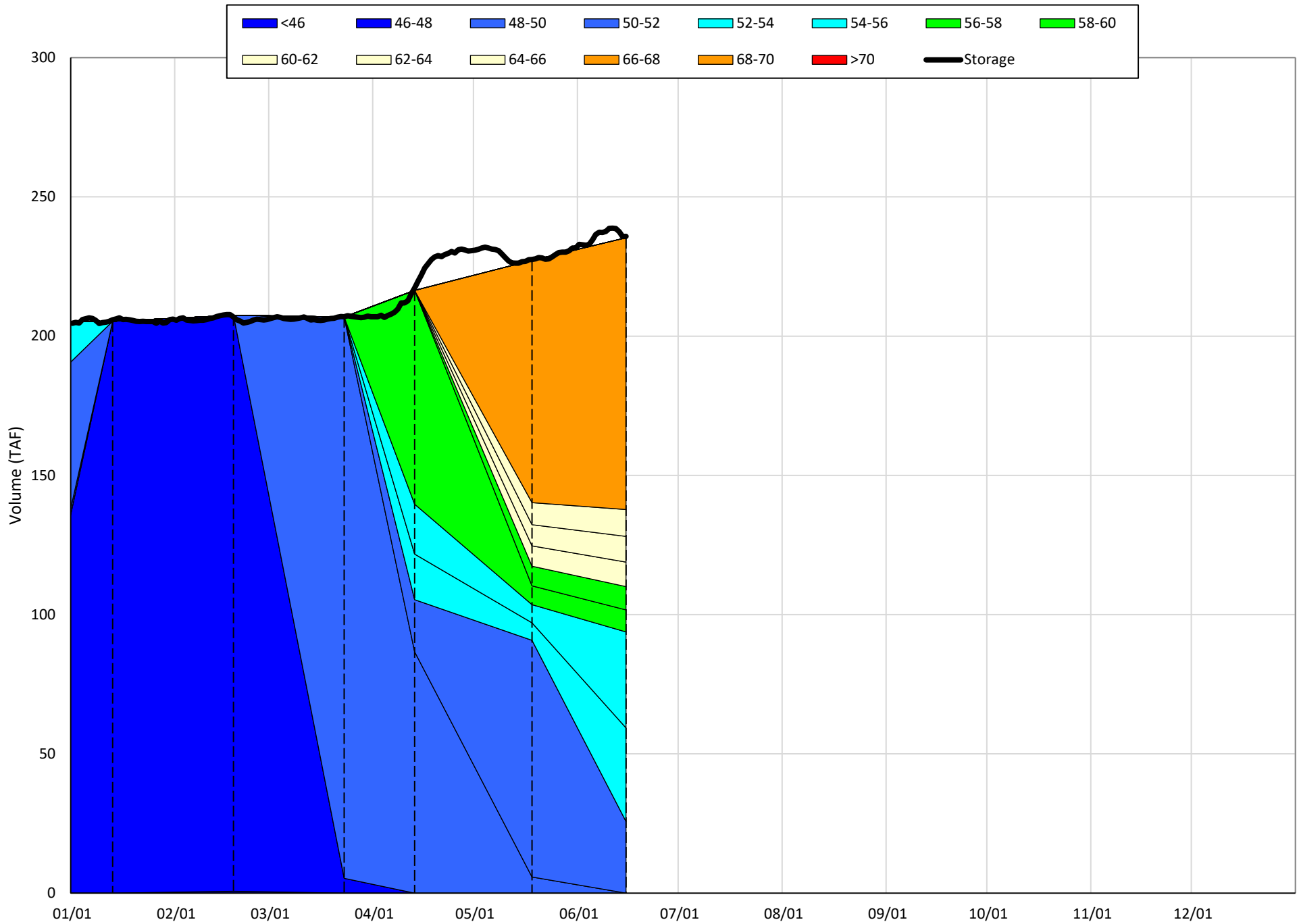
(Historic - Current) / Current

Whiskeytown Lake Isothermobaths & Cold Water Pool Statistics

2021

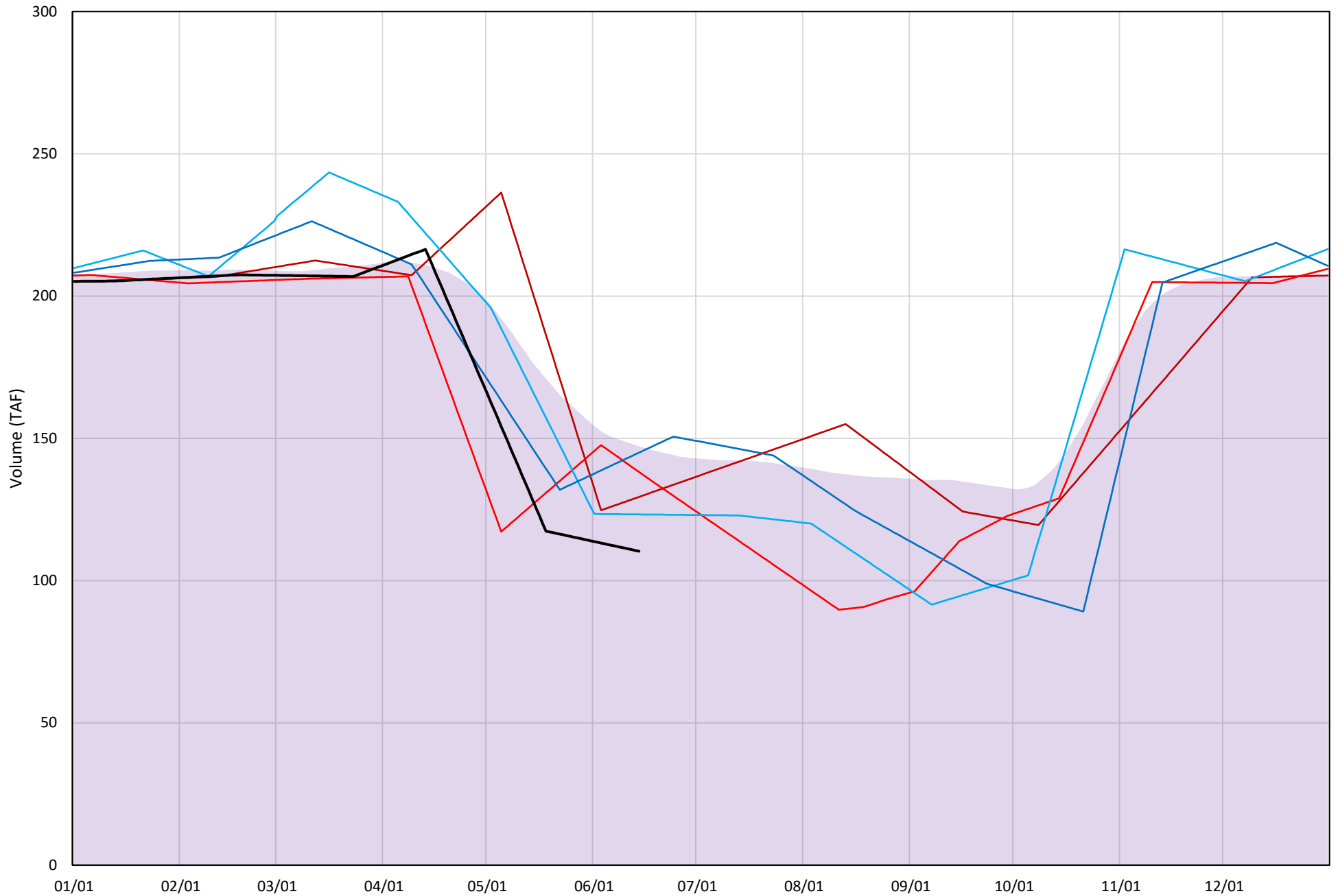
Page	Description
24	- Whiskeytown Lake Isothermobaths Plot
25	- Whiskeytown Lake Cold Water Pool Volume $\leq 60^{\circ}\text{F}$
26	- Whiskeytown Lake Cold Water Pool Volume $\leq 58^{\circ}\text{F}$
27	- Whiskeytown Lake Cold Water Pool Volume $\leq 56^{\circ}\text{F}$
28	- Whiskeytown Lake Cold Water Pool Volume $\leq 60^{\circ}\text{F}$ - Percent Exceedances
29	- Whiskeytown Lake Cold Water Pool Volume $\leq 58^{\circ}\text{F}$ - Percent Exceedances
30	- Whiskeytown Lake Cold Water Pool Volume $\leq 56^{\circ}\text{F}$ - Percent Exceedances
31	- Whiskeytown Lake Cold Water Pool Comparison by Year

Whiskeytown Lake Isothermobaths Plot - 2021



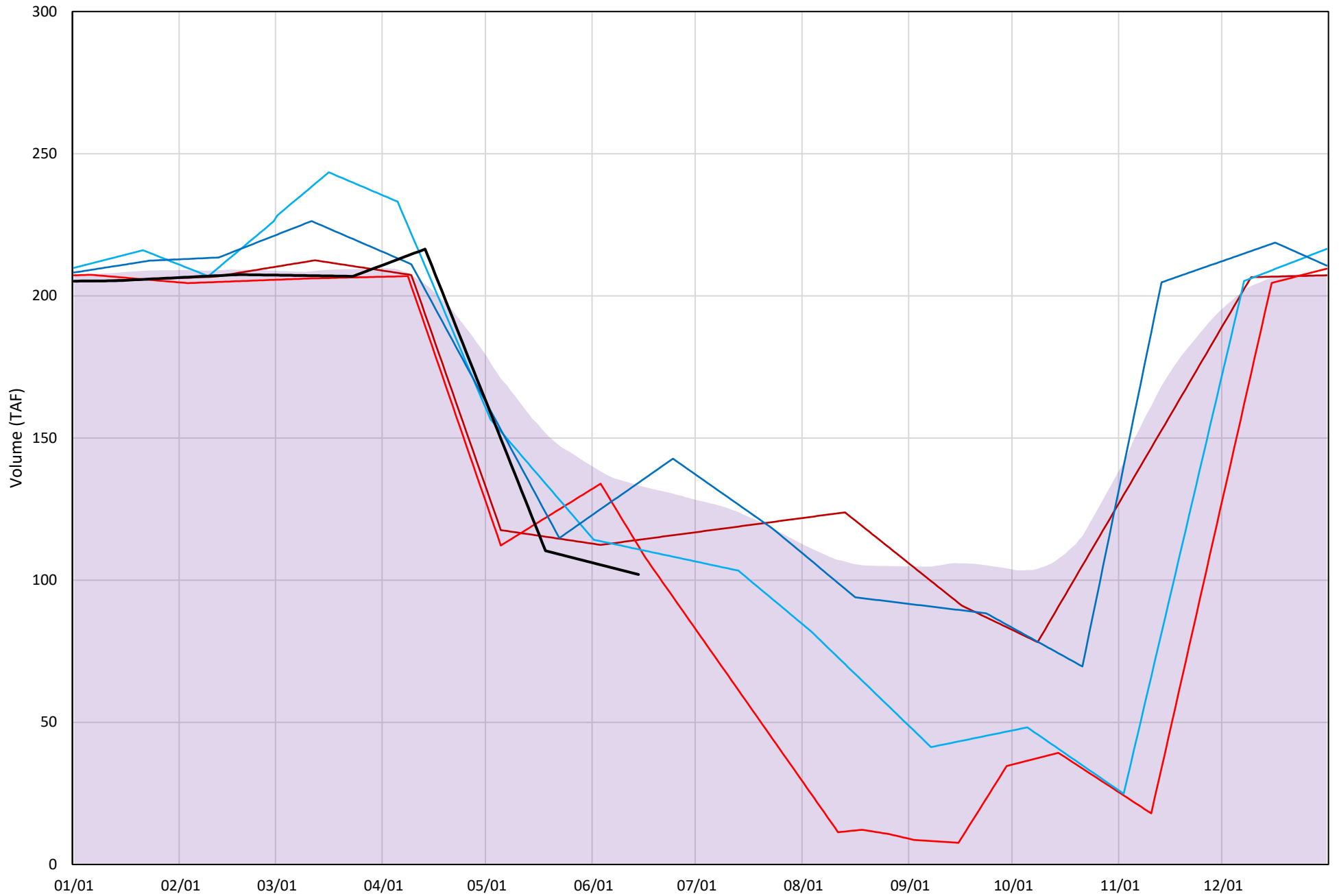
Whiskeytown Lake Cold Water Pool Volume $\leq 60^{\circ}\text{F}$

Avg (2000-2020) 2014 2015 2016 2019 2021



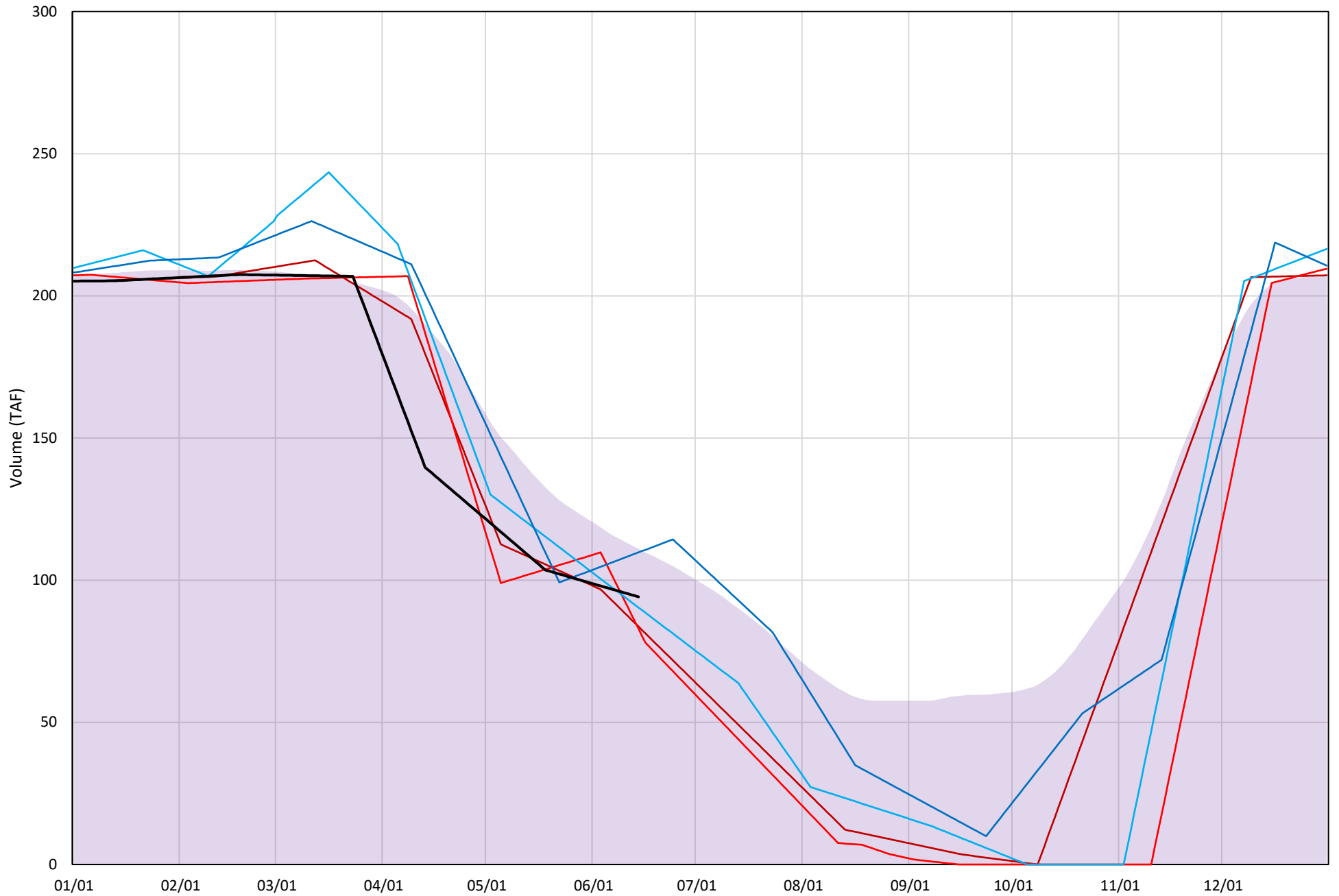
Whiskeytown Lake Cold Water Pool Volume $\leq 58^{\circ}\text{F}$

Avg (2000-2020) 2014 2015 2016 2019 2021

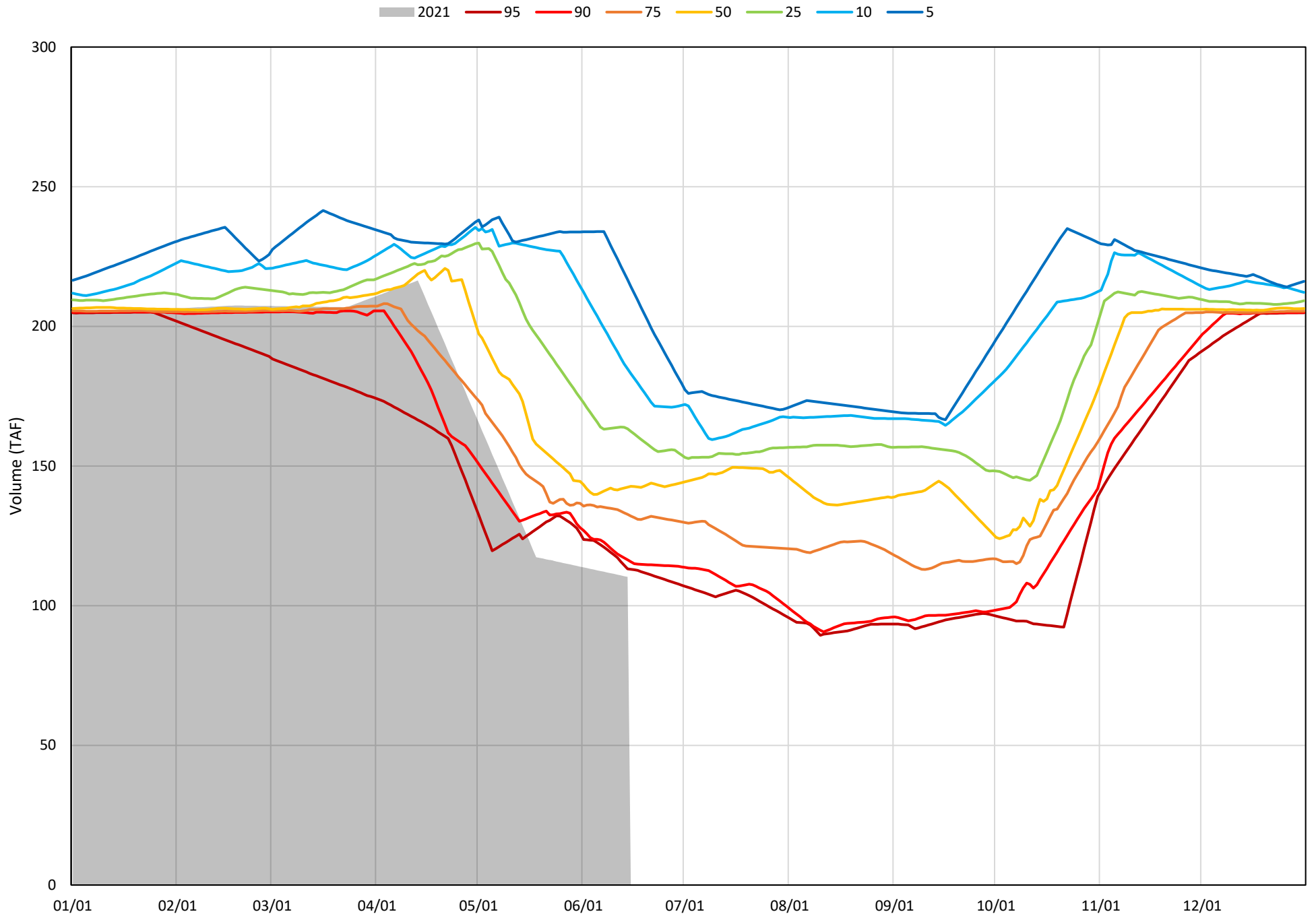


Whiskeytown Lake Cold Water Pool Volume $\leq 56^{\circ}\text{F}$

Avg (2000-2020) 2014 2015 2016 2019 2021

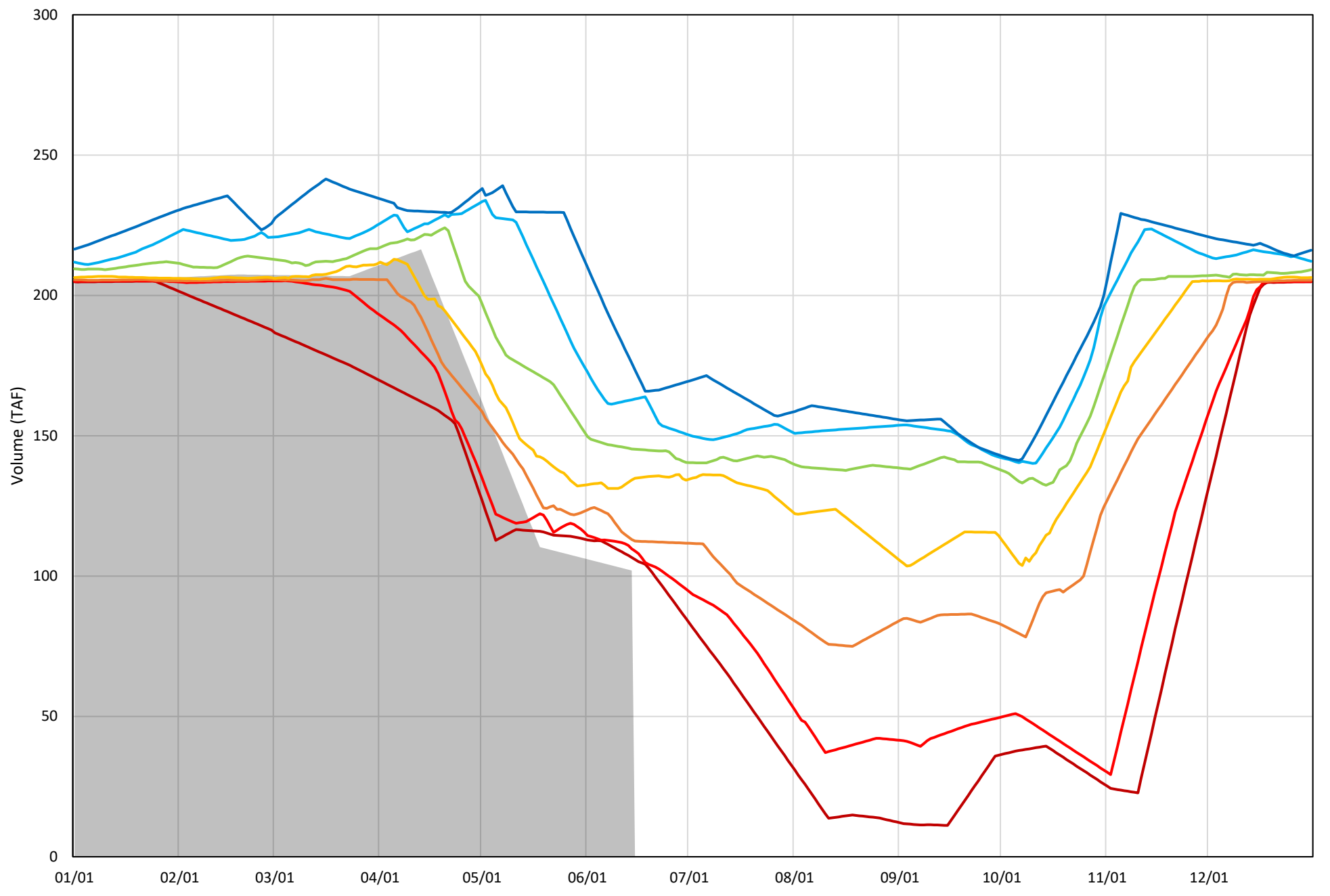


Whiskeytown Lake Cold Water Pool Volume $\leq 60^{\circ}\text{F}$ - Percent Exceedances (2000-2020)



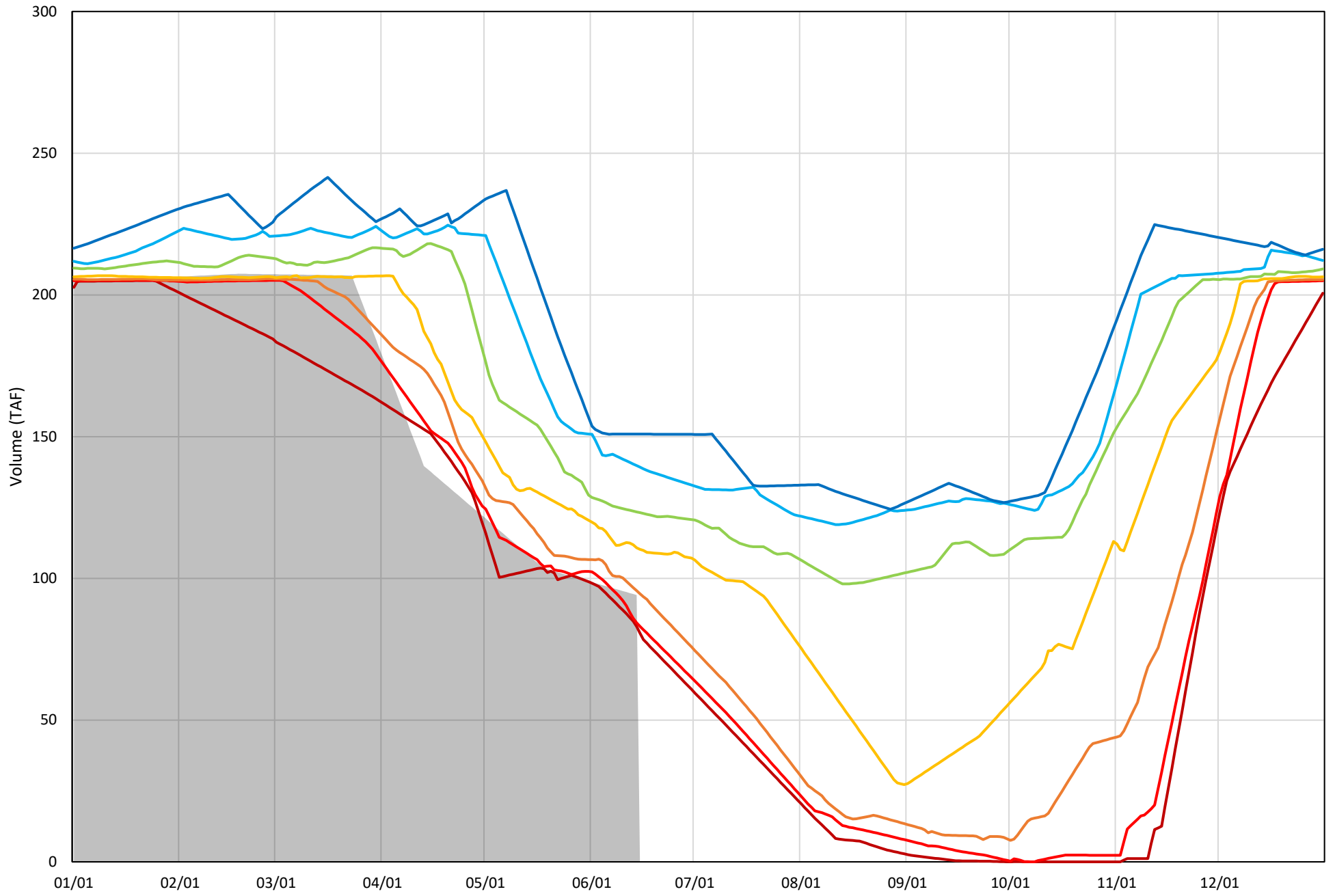
Whiskeytown Lake Cold Water Pool Volume $\leq 58^{\circ}\text{F}$ - Percent Exceedances (2000-2020)

2021 95 90 75 50 25 10 5



Whiskeytown Lake Cold Water Pool Volume $\leq 56^{\circ}\text{F}$ - Percent Exceedances (2000-2020)

2021 95 90 75 50 25 10 5



Whiskeytown Cold Water Pool Comparison by Year (for Specified Date)

Jun-15 2021	Δ TAF				% Δ			
	$\leq 60^\circ$	$\leq 58^\circ$	$\leq 56^\circ$	Abs. Avg.	$\leq 60^\circ$	$\leq 58^\circ$	$\leq 56^\circ$	Abs. Avg.
2000	51	26	16	31	45	24	16	28
2001	20	21	11	17	18	19	11	16
2002	31	28	20	27	27	27	20	25
2003	52	47	34	44	45	44	35	41
2004	28	31	30	30	24	29	31	28
2005	-2	3	-5	3	-2	3	-5	3
2006	53	58	54	55	46	54	55	52
2007	24	29	19	24	21	27	19	23
2008	28	30	17	25	24	28	17	23
2009	18	4	-11	11	16	4	-12	10
2010	74	71	4	50	65	67	4	45
2011	105	52	5	54	92	49	5	49
2012	18	19	13	17	16	18	13	16
2013	32	31	31	31	28	29	32	30
2014	15	8	-15	12	13	7	-15	12
2015	23	6	-15	15	20	5	-16	14
2016	9	5	-8	7	7	4	-8	7
2017	46	47	43	46	40	45	44	43
2018	25	25	13	21	22	23	13	19
2019	30	28	12	23	26	26	12	21
2020	0	0	0	0	0	0	0	0

$\underbrace{\hspace{15em}}$
 Historic - Current

$\underbrace{\hspace{15em}}$
 (Historic - Current) / Current