

Northern CVP Water Temperature Report

June - 2020

Page	Description
1	- Mean Daily Water Temperature, Release Flow Rates and Air Temperatures with Monthly Averages
2	- Redding 10-Day Forecasted Air Temperatures
3	- Sacramento River Mean Daily Water Temperature, Air Temperature and 10-Day Forecasted Air Temperature Plot - Water Temperature Measuring Station Details - Temperature Control Point Details
4	- Shasta Lake Isothermobaths Plot
5	- Trinity Lake Isothermobaths Plot
6	- Whiskeytown Lake Isothermobaths Plot
x	- TCD Configuration (External Link)



— BUREAU OF —
RECLAMATION

All Data in this Report is Preliminary and Subject to Change

DATE	Mean Daily Water Temperatures (°F)													Mean Daily Release (CFS)			Mean Daily Air Temperatures (°F)				
	TCD ¹	SHD	SPP ¹	KWK	SAC	CCR	BSF ²	JLF	BND	RDB	IGO	LWS	-----	Shasta Generation	Spring Creek P.P.	Keswick Total	RDD	BSF	RDB	LWS	
May	52.4	51.2	50.7	52.5	53.0	53.6	55.3	56.5	57.0	58.0	53.6	49.7	-	7533	1362	9142	68.3	65.8	67.7	-	
06/01	51.2	50.2	51.5	51.8	52.3	52.9	54.7	56.2	56.7	57.6	56.3	50.4	-	8331	1306	10037	76.0	72.0	72.3	-	
06/02	51.4	50.5	51.6	51.8	52.6	53.3	55.4	57.1	57.7	58.8	56.9	50.9	-	9095	1392	10490	80.5	76.7	78.0	-	
06/03	51.3	50.4	51.8	52.1	52.6	53.3	55.4	57.1	57.8	59.1	57.2	50.9	-	7986	1770	10508	81.5	77.4	78.7	-	
06/04	51.6	50.5	51.8	52.2	52.9	53.7	55.8	57.5	58.2	59.4	57.4	51.0	-	8395	1844	10515	82.5	79.5	80.7	-	
06/05	51.8	51.1	51.9	52.2	52.8	53.5	55.6	57.3	58.1	59.6	56.5	51.1	-	9006	1447	10383	75.0	72.7	72.6	-	
06/06	51.2	50.4	52.1	52.1	52.6	53.2	55.1	56.5	57.2	58.3	55.6	51.4	-	8024	1667	10355	71.0	63.3	62.8	-	
06/07	51.8	50.6	52.2	51.9	52.5	53.0	54.5	55.5	56.1	57.0	54.6	51.6	-	7765	1917	10360	60.5	58.0	62.6	-	
06/08	51.8	50.9	52.3	51.8	52.3	52.7	54.2	55.4	55.9	56.9	55.3	51.4	-	8481	1801	10358	66.5	64.1	65.2	-	
06/09	51.9	50.8	52.4	52.3	52.8	53.5	55.0	56.1	56.8	57.5	56.0	51.3	-	8742	1549	10357	72.5	70.5	72.0	-	
06/10	51.0	50.2	52.4	52.4	53.0	53.7	55.5	56.8	57.7	58.6	57.0	51.0	-	8874	1455	10417	77.5	74.8	76.7	-	
06/11	51.0	50.2	52.5	52.0	52.7	53.3	55.3	56.8	57.7	58.7	56.9	51.1	-	8704	1567	10976	77.5	74.5	76.3	-	
06/12	50.8	50.1	52.7	51.4	52.0	52.5	54.2	55.6	56.6	57.7	55.5	50.7	-	9380	1690	11530	70.5	67.7	70.7	-	
06/13	51.0	50.3	52.7	51.1	51.6	52.0	53.4	54.7	55.5	56.5	55.0	50.8	-	10113	1226	11917	65.0	63.5	63.1	-	
06/14	51.4	50.6	52.8	51.4	51.9	52.4	54.1	55.2	55.8	56.4	56.8	50.5	-	10845	1049	11973	73.0	71.1	71.0	-	
06/15	51.3	50.6	52.9	51.8	52.0	52.3	53.5	54.5	55.3	56.2	55.3	50.2	-	10354	1658	12050	71.5	69.1	68.7	-	
06/16	51.3	50.5	53.0	51.6	52.2	52.7	54.0	54.9	55.5	55.8	56.1	50.8	-	10152	1645	11978	67.5	66.0	69.5	-	
06/17	51.5	50.7	53.1	51.9	52.4	52.9	54.5	55.5	56.2	56.8	56.4	50.6	-	9813	1498	11858	76.0	72.8	74.5	-	
06/18	50.6	50.1	53.1	52.3	52.6	53.2	54.7	55.9	56.6	57.4	57.0	50.6	-	9656	1647	11936	84.0	75.0	78.8	-	
06/19	50.7	50.0	53.1	51.6	52.2	52.9	54.8	56.1	57.0	58.0	56.4	50.8	-	10231	1546	11976	80.0	78.5	79.8	-	
06/20	50.9	50.2	53.3	51.5	52.0	52.8	54.5	55.8	56.5	57.6	54.2	51.3	-	10550	1276	11890	82.0	78.6	78.4	-	
06/21	51.1	50.4	53.5	51.8	52.2	53.0	54.7	56.0	56.9	57.9	54.4	51.5	-	11489	814	11822	84.0	81.3	82.1	-	
06/22	51.0	50.4	53.5	51.8	52.3	53.0	54.8	56.3	57.1	58.2	55.4	52.0	-	11008	1075	11961	↑ 89.0	85.7	84.8	-	
06/23	51.1	50.3	53.5	52.0	52.4	53.2	55.0	56.5	57.4	58.7	56.8	52.1	-	10354	1437	11992	90.0	84.9	84.4	-	
06/24	51.3	50.4	53.5	52.0	52.4	53.1	54.9	56.5	57.4	58.7	57.4	52.2	-	9724	1762	11965	89.0	85.5	84.3	-	
06/25	51.2	50.5	53.6	52.1	52.6	53.3	55.1	56.6	57.4	58.5	57.9	52.3	-	10209	1655	11982	94.0	86.8	88.8	-	
06/26	51.2	50.5	53.6	52.2	52.7	53.4	55.2	56.7	57.6	58.9	58.2	53.3	-	10509	1571	12280	92.0	88.8	90.1	-	
06/27	51.4	50.7	53.7	52.1	52.6	53.4	55.2	56.7	57.6	58.9	58.5	54.0	-	10762	1491	12303	87.5	83.1	82.6	-	
06/28	51.5	50.8	53.9	52.3	52.7	53.4	55.0	56.4	57.3	58.6	57.9	53.6	-	10433	1064	12324	77.5	75.7	74.8	-	
06/29	51.3	50.8	53.8	52.3	52.6	53.2	54.6	55.8	56.5	57.5	57.2	53.2	-	11049	1534	12428	77.0	75.9	77.0	-	
06/30	51.4	50.8	53.8	52.1	52.6	53.2	54.8	55.9	56.7	57.6	57.6	53.2	-	10380	1547	12368	79.0	78.0	78.8	-	
-																					
Jun	51.3	50.5	52.8	51.9	52.4	53.1	54.8	56.1	56.9	57.9	56.4	51.5	-	9680	1497	11443	78.3	75.1	76.0	-	

Total CFS	290414	44900	343289
Total AF	576024	89057	680900

Legend

Notes

- ? = 1-9 hours of data missing (Average includes estimations)
- ! = 10 or more hours of data missing (Average not calculated)
- # = Station out of service
- ↑ = Record high air temperature
- ↓ = Record low air temperature
- = Monthly Averages

- ¹ Temperatures are weighted averages based on individual penstock flow and temperature
- Highlighted cells in the TCD column indicate a TCD change was made on that day
- ² Current control point (see page 3 for more details)
- ³ Column not used this month

D A T E	Redding (RDD) Daily Air Temperatures (°F)																																				
	Actual			Forecasted																																	
	Previous Day			Current Day			1 Day			2 Days			3 Days			4 Days			5 Days			6 Days			7 Days			8 Days			9 Days			10 Days			
	↓	↑	Avg	↓	↑	Avg	↓	↑	Avg	↓	↑	Avg	↓	↑	Avg	↓	↑	Avg	↓	↑	Avg	↓	↑	Avg	↓	↑	Avg	↓	↑	Avg	↓	↑	Avg	↓	↑	Avg	
06/01	58	81	69.5	58	85	71.5	60	96	78.0	63	98	80.5	63	97	80.0	63	89	76.0	57	79	68.0	50	75	62.5	54	83	68.5	58	87	72.5	61	92	76.5	63	95	79.0	
06/02	65	87	76.0	65	97	81.0	64	100	82.0	64	99	81.5	63	91	77.0	56	76	66.0	49	75	62.0	49	81	65.0	57	88	72.5	60	92	76.0	63	91	77.0	62	92	77.0	
06/03	65	96	80.5	65	99	82.0	65	99	82.0	64	94	79.0	58	73	65.5	49	72	60.5	47	79	63.0	51	85	68.0	64	94	79.0	64	95	79.5	61	90	75.5	60	89	74.5	
06/04	65	98	81.5	69	99	84.0	64	90	77.0	56	74	65.0	47	73	60.0	47	81	64.0	53	88	70.5	58	94	76.0	61	88	74.5	58	86	72.0	60	83	71.5	59	90	74.5	
06/05	67	98	82.5	65	88	76.5	55	73	64.0	47	71	59.0	47	80	63.5	52	88	70.0	57	93	75.0	60	92	76.0	59	84	71.5	57	84	70.5	59	87	73.0	62	92	77.0	
06/06	64	86	75.0	56	70	63.0	45	72	58.5	47	82	64.5	53	90	71.5	59	94	76.5	60	90	75.0	57	82	69.5	62	86	74.0	60	89	74.5	63	90	76.5	62	89	75.5	
06/07	56	86	71.0	49	71	60.0	46	82	64.0	53	90	71.5	58	93	75.5	59	91	75.0	59	83	71.0	55	81	68.0	57	88	72.5	62	93	77.5	64	94	79.0	63	92	77.5	
06/08	48	73	60.5	52	82	67.0	54	89	71.5	58	92	75.0	59	90	74.5	58	81	69.5	52	78	65.0	54	87	70.5	61	94	77.5	65	97	81.0	64	96	80.0	63	92	77.5	
06/09	50	83	66.5	55	89	72.0	58	93	75.5	61	92	76.5	59	80	69.5	52	78	65.0	52	86	69.0	58	91	74.5	61	89	75.0	60	86	73.0	59	84	71.5	61	91	76.0	
06/10	55	90	72.5	60	97	78.5	61	94	77.5	60	82	71.0	54	75	64.5	54	85	69.5	59	91	75.0	60	91	75.5	62	90	76.0	63	95	79.0	63	93	78.0	63	93	78.0	
06/11	60	95	77.5	62	93	77.5	59	80	69.5	53	73	63.0	52	85	68.5	57	92	74.5	57	90	73.5	58	91	74.5	59	86	72.5	60	89	74.5	64	92	78.0	64	94	79.0	
06/12	62	93	77.5	61	81	71.0	52	72	62.0	52	85	68.5	57	89	73.0	56	91	73.5	60	96	78.0	62	98	80.0	66	99	82.5	67	100	83.5	66	97	81.5	66	95	80.5	
06/13	59	82	70.5	57	73	65.0	52	84	68.0	57	85	71.0	56	88	72.0	59	96	77.5	63	99	81.0	65	101	83.0	67	100	83.5	67	102	84.5	67	100	83.5	68	99	83.5	
06/14	56	74	65.0	61	84	72.5	56	81	68.5	52	84	68.0	56	93	74.5	61	99	80.0	64	102	83.0	65	101	83.0	68	98	83.0	66	98	82.0	66	94	80.0	67	96	81.5	
06/15	60	86	73.0	51	80	65.5	52	81	66.5	55	92	73.5	60	98	79.0	64	102	83.0	65	102	83.5	66	101	83.5	70	102	86.0	69	100	84.5	67	96	81.5	68	99	83.5	
06/16	63	80	71.5	53	80	66.5	56	90	73.0	62	97	79.5	63	102	82.5	65	102	83.5	66	102	84.0	67	103	85.0	70	104	87.0	69	103	86.0	67	98	82.5	68	99	83.5	
06/17	53	82	67.5	62	90	76.0	62	98	80.0	64	101	82.5	65	102	83.5	67	103	85.0	68	104	86.0	69	104	86.5	69	104	86.5	69	103	86.0	66	97	81.5	66	95	80.5	
06/18	62	90	76.0	72	97	84.5	64	101	82.5	66	100	83.0	66	101	83.5	68	106	87.0	69	106	87.5	69	106	87.5	73	106	89.5	72	104	88.0	71	98	84.5	65	95	80.0	
06/19	71	97	84.0	61	101	81.0	66	101	83.5	66	101	83.5	67	107	87.0	71	108	89.5	72	107	89.5	72	107	89.5	70	104	87.0	69	104	86.5	68	98	83.0	67	97	82.0	
06/20	60	100	80.0	66	100	83.0	66	101	83.5	69	108	88.5	71	108	89.5	73	107	90.0	71	105	88.0	71	107	89.0	71	107	89.0	70	103	86.5	67	96	81.5	64	94	79.0	
06/21	65	99	82.0	69	100	84.5	69	108	88.5	72	109	90.5	73	107	90.0	72	107	89.5	72	110	91.0	72	109	90.5	73	108	90.5	70	104	87.0	67	98	82.5	64	96	80.0	
06/22	67	101	84.0	69	107	88.0	72	108	90.0	72	106	89.0	72	107	89.5	72	110	91.0	73	106	89.5	70	99	84.5	66	91	78.5	65	95	80.0	67	97	82.0	67	98	82.5	
06/23	69	109	89.0	74	107	90.5	72	106	89.0	71	108	89.5	72	110	91.0	72	102	87.0	67	92	79.5	61	91	76.0	66	95	80.5	66	97	81.5	68	96	82.0	66	97	81.5	
06/24	73	107	90.0	75	106	90.5	72	110	91.0	73	111	92.0	73	104	88.5	65	90	77.5	59	88	73.5	61	91	76.0	66	100	83.0	67	100	83.5	67	97	82.0	66	98	82.0	
06/25	74	104	89.0	80	110	95.0	72	112	92.0	72	102	87.0	65	89	77.0	59	90	74.5	61	96	78.5	64	99	81.5	67	100	83.5	66	98	82.0	67	97	82.0	66	98	82.0	
06/26	79	109	94.0	75	111	93.0	72	102	87.0	65	88	76.5	58	90	74.0	62	95	78.5	62	98	80.0	64	99	81.5	65	96	80.5	64	100	82.0	66	97	81.5	65	97	81.0	
06/27	72	112	92.0	75	102	88.5	63	87	75.0	58	92	75.0	62	96	79.0	63	99	81.0	64	98	81.0	64	98	81.0	63	97	80.0	65	98	81.5	66	96	81.0	65	97	81.0	
06/28	75	100	87.5	69	85	77.0	58	92	75.0	61	95	78.0	62	97	79.5	63	95	79.0	61	94	77.5	62	98	80.0	63	95	79.0	64	96	80.0	66	94	80.0	64	94	79.0	
06/29	68	87	77.5	62	92	77.0	62	96	79.0	62	96	79.0	63	94	78.5	61	93	77.0	61	97	79.0	62	98	80.0	65	95	80.0	64	96	80.0	66	94	80.0	65	96	80.5	
06/30	62	92	77.0	65	95	80.0	62	96	79.0	63	95	79.0	61	93	77.0	61	96	78.5	62	98	80.0	64	98	81.0	65	94	79.5	64	94	79.0	66	94	80.0	65	94	79.5	
-																																					

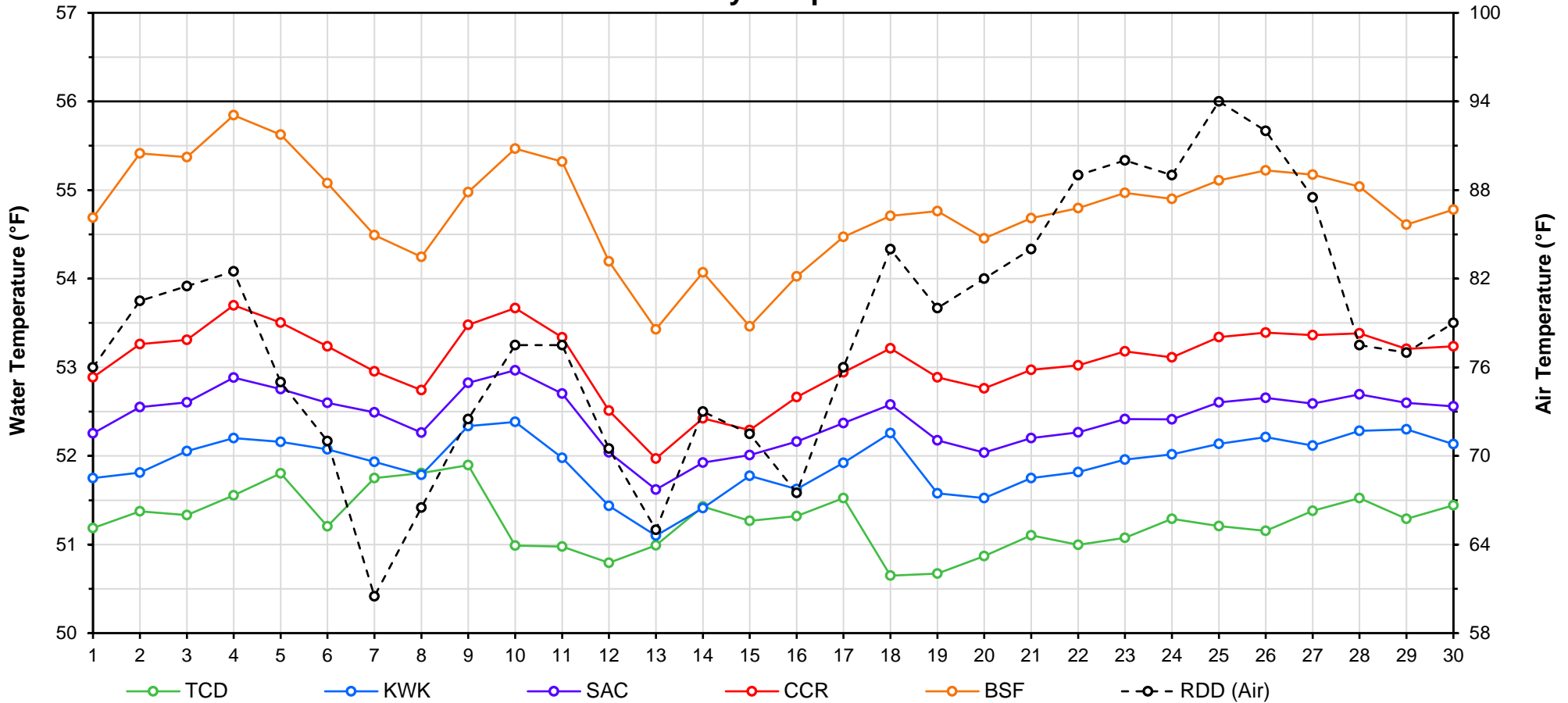
Web Links

- [10-Day Min/Max Forecast](#)
- [Previous Days Min/Max Actuals](#)

Legend

- NR = Forecasted temperatures not recorded
- 100** = Previous day actual temperatures in red and bolded indicate a record temperature for that date

Mean Daily Temperatures



Station Details			
Code	Body of Water	Location ¹	CDEC Link
TCD	N/A	Shasta Power Plant	N/A
SHD	Sacramento River	0.3 miles downstream of Shasta Power Plant	Click Here
SPP	N/A	Spring Creek Power Plant	N/A
KWK	Sacramento River	0.8 miles downstream of Keswick Dam	Click Here
SAC	Sacramento River	4.8 miles downstream of Keswick Dam	Click Here
CCR	Sacramento River	9.7 miles downstream of Keswick Dam	Click Here
BSF	Sacramento River	25 miles downstream of Keswick Dam	Click Here
JLF	Sacramento River	34 miles downstream of Keswick Dam	Click Here
BND	Sacramento River	41 miles downstream of Keswick Dam	Click Here
RDB	Sacramento River	58 miles downstream of Keswick Dam	Click Here
IGO	Clear Creek	7.3 miles downstream of Whiskeytown Dam	Click Here
LWS	Trinity River	1.1 miles downstream of Lewiston Dam	Click Here
DGC ²	Trinity River	19 miles downstream of Lewiston Dam	Click Here
NFH ³	Trinity River	38 miles downstream of Lewiston Dam	Click Here

Temperature Control Point		
Point	Temp. (°F)	Begin Date
BSF	56.0	5/15/2019

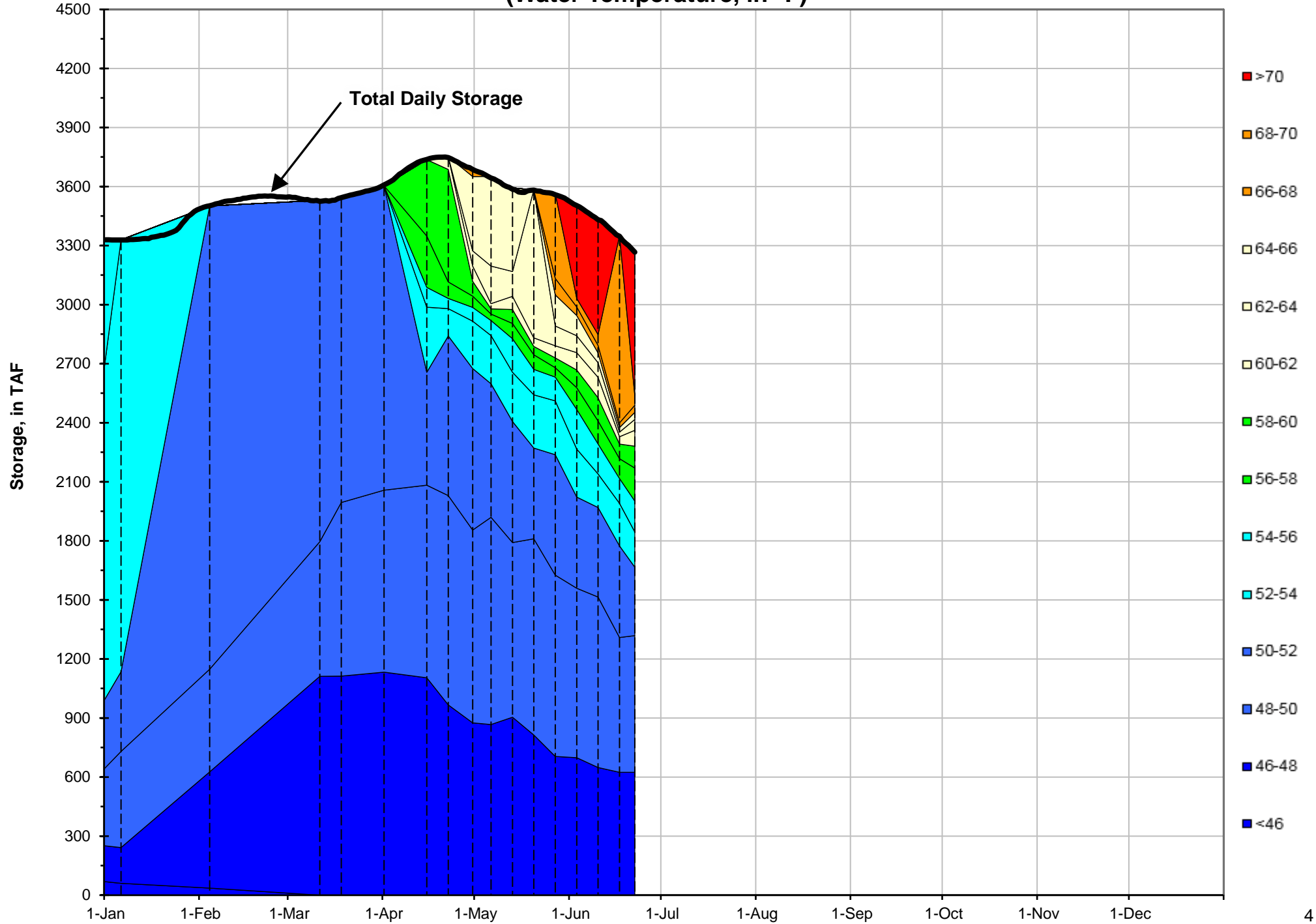
Notes

¹ Distances are approximate

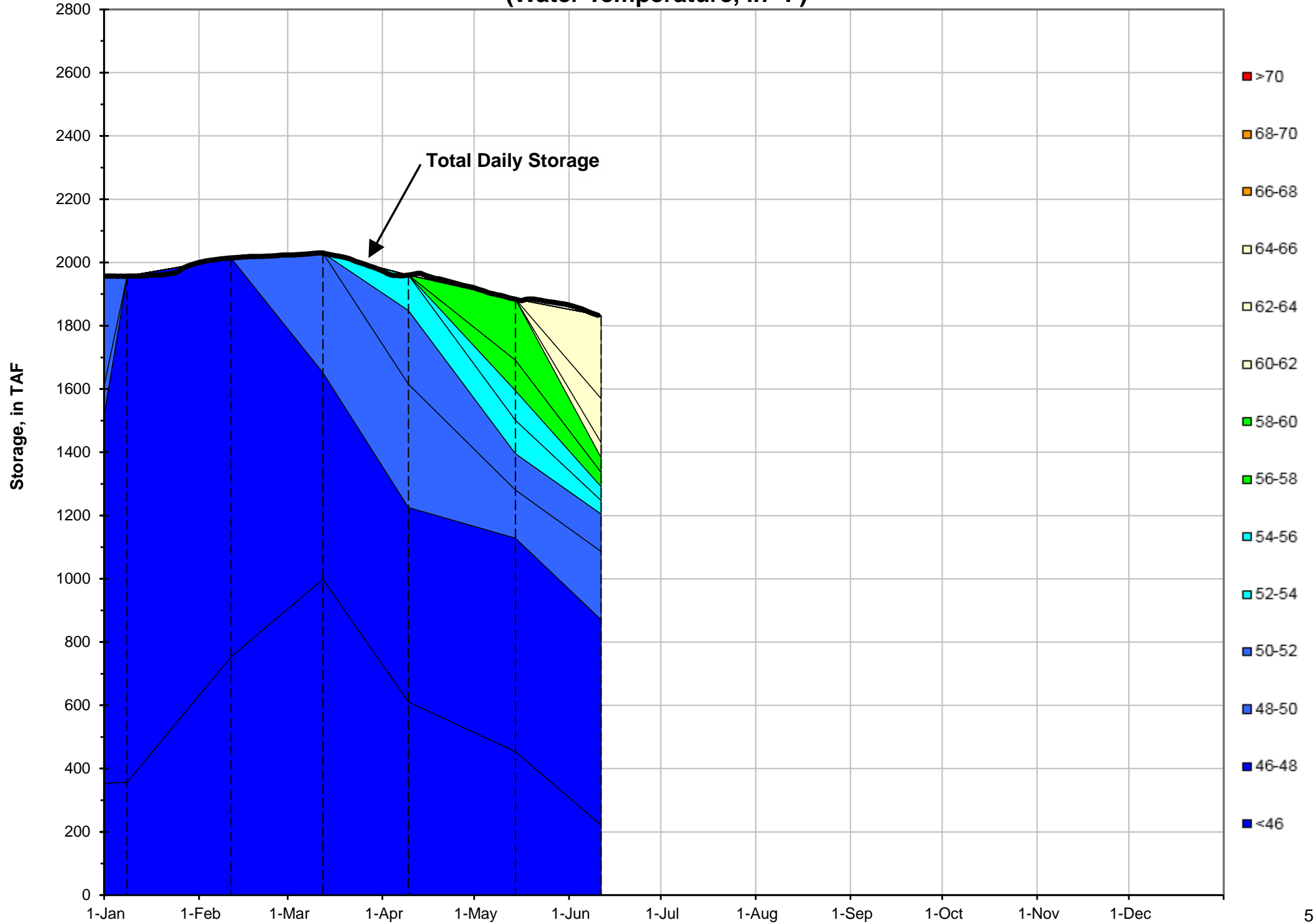
² DGC is only reported in September

³ NFH is only reported in October, November and December

Shasta Lake Isothermobaths - 2020 (Water Temperature, in °F)



Trinity Lake Isothermobaths - 2020 (Water Temperature, in °F)



Whiskeytown Lake Isothermobaths - 2020 (Water Temperature, in °F)

