

Northern CVP Water Temperature Report

June - 2019

Page	Description
1	- Mean Daily Water Temperature, Release Flow Rates and Air Temperatures with Monthly Averages
2	- Redding 10-Day Forecasted Air Temperatures
3	- Sacramento River Mean Daily Water Temperature, Air Temperature and 10-Day Forecasted Air Temperature Plot - Water Temperature Measuring Station Details - Temperature Control Point Details
4	- Daily Maximum and 7DADM
5	- Shasta Lake Isothermobaths Plot
6	- Trinity Lake Isothermobaths Plot
7	- Whiskeytown Lake Isothermobaths Plot
x	- TCD Configuration (External Link)



All Data in this Report is Preliminary and Subject to Change

DATE	Mean Daily Water Temperatures (°F)													Mean Daily Release (CFS)			Mean Daily Air Temperatures (°F)			
	TCD ¹	SHD	SPP ¹	KWK	SAC	CCR	BSF ²	JLF	BND	RDB	IGO	LWS	----- ³	Shasta Generation	Spring Creek P.P.	Keswick Total	RDD	BSF	RDB	LWS
May	51.4	50.6	50.8	51.8	52.5	53.1	55.1	56.9	58.0	58.1	54.2	47.7	-	6954	731	8074	66.0	63.6	64.4	-
06/01	50.9	50.4	52.0	51.5	52.1	52.6	54.9	57.0	57.6	58.4	59.0	47.8	-	9511	3063	13003	80.5	77.1	79.1	-
06/02	? 51.0	50.2	52.3	51.7	52.2	52.8	55.1	57.3	57.9	58.8	59.3	48.1	-	8915	3355	12996	80.5	75.8	75.9	-
06/03	51.0	50.4	52.5	51.8	52.3	52.8	55.1	57.4	58.1	59.1	59.3	48.4	-	9117	3612	12929	82.0	79.7	79.0	-
06/04	51.1	50.5	52.6	51.9	52.4	53.0	55.4	57.6	58.3	59.2	59.2	48.4	-	9045	3305	12894	83.5	80.9	80.4	-
06/05	51.1	50.6	52.8	52.0	52.5	53.1	55.3	57.5	58.2	59.1	59.5	48.3	-	9818	3583	12902	82.5	77.5	79.6	-
06/06	? 51.1	50.6	? 52.8	52.0	52.3	52.8	54.7	56.7	57.4	58.4	57.2	48.1	-	9053	3324	12858	72.0	70.2	74.4	-
06/07	51.1	50.7	52.7	51.7	52.1	52.5	54.2	55.7	56.2	56.8	56.1	47.2	-	9114	3332	12897	67.5	65.0	66.7	-
06/08	51.0	50.6	52.5	51.8	52.2	52.6	54.2	55.5	56.1	56.5	56.2	47.3	-	8754	3286	12897	73.5	70.6	72.3	-
06/09	51.2	50.6	52.2	51.8	52.2	52.7	54.5	56.0	56.5	57.1	57.1	47.6	-	8950	3211	12895	81.5	73.6	76.6	-
06/10	51.2	50.5	52.1	51.9	52.3	52.8	54.7	56.5	57.0	57.8	58.0	47.9	-	8776	3251	12727	80.5	78.3	78.9	-
06/11	51.3	50.5	52.0	51.9	52.5	53.0	55.2	57.1	57.8	58.5	58.7	48.1	-	7982	2836	11575	84.0	79.3	80.5	-
06/12	51.2	50.3	52.1	52.0	52.5	52.9	55.1	57.3	58.1	59.0	59.0	48.1	-	7838	3172	10134	83.5	78.3	80.3	-
06/13	51.0	50.0	52.2	52.0	52.6	53.3	55.7	57.8	58.4	59.1	59.1	48.2	-	5983	3315	10070	83.0	79.3	80.3	-
06/14	51.0	50.2	52.1	52.0	52.7	53.4	56.1	58.4	59.2	60.2	59.4	48.3	-	7322	1583	10069	82.5	78.8	76.9	-
06/15	51.3	50.5	52.1	51.8	52.5	53.1	55.8	58.2	59.1	60.2	59.7	48.6	-	8032	1574	9999	81.0	75.5	74.1	-
06/16	50.6	49.8	52.2	51.8	52.5	53.1	55.6	57.9	58.7	59.7	59.6	48.8	-	7801	1593	9999	83.5	77.6	75.7	-
06/17	50.3	49.6	52.5	51.4	52.3	53.0	55.9	58.5	59.3	60.6	59.8	49.1	-	8853	1435	10000	87.0	84.2	84.1	-
06/18	50.3	49.6	52.4	51.3	52.1	52.8	55.6	58.1	59.0	60.5	59.7	49.1	-	7979	1213	9993	93.0	85.8	85.6	-
06/19	50.3	49.6	52.5	51.2	52.0	52.6	55.4	57.8	58.8	60.2	59.5	49.0	-	7566	1832	9996	92.0	86.3	84.7	-
06/20	50.6	50.0	52.6	51.2	51.9	52.4	54.9	57.2	58.2	59.5	58.5	49.8	-	8197	1350	9948	81.0	79.1	80.3	-
06/21	50.7	50.1	? 52.9	51.2	51.8	52.3	54.4	56.3	57.1	58.1	57.5	49.2	-	9090	1379	9988	77.0	75.0	76.3	-
06/22	50.8	50.2	? 53.1	51.4	52.0	52.7	55.0	56.8	57.5	58.4	55.8	49.1	-	8355	1262	9988	84.0	79.5	80.5	-
06/23	51.0	50.3	53.0	51.5	52.1	52.8	55.1	57.1	57.9	59.0	56.9	49.3	-	8603	1224	9992	84.0	79.8	80.4	-
06/24	51.0	50.3	53.2	51.7	52.3	52.9	55.2	57.3	58.1	59.1	57.6	49.0	-	7922	1180	9988	85.0	77.1	78.9	-
06/25	50.9	50.3	53.1	51.6	52.1	52.7	54.8	56.8	57.7	58.9	57.7	49.3	-	8363	1379	9990	77.5	73.0	77.1	-
06/26	51.1	50.5	!	-	51.5	51.9	52.4	54.5	56.5	57.3	58.3	49.1	-	8697	829	9999	70.5	69.1	71.0	-
06/27	51.6	50.4	#	-	51.5	52.1	52.7	54.5	56.1	56.7	57.8	49.1	-	9137	1023	9998	67.5	67.5	66.0	-
06/28	51.1	50.4	#	-	52.0	52.5	53.1	54.9	56.6	57.3	58.2	48.7	-	8986	977	9998	73.5	69.6	70.1	-
06/29	51.1	50.5	#	-	51.6	52.2	52.8	55.0	56.8	57.6	58.6	48.7	-	9222	1166	10965	74.5	70.7	72.3	-
06/30	51.3	50.6	#	-	51.7	52.3	52.8	54.7	56.4	57.1	58.0	48.9	-	9343	1143	10993	76.5	72.0	73.9	-
-																				
Jun	51.0	50.3	52.5	51.7	52.2	52.8	55.0	57.1	57.8	58.8	58.2	48.6	-	8544	2160	11089	80.2	76.2	77.1	-

Total CFS	256324	64787	332680
Total AF	508408	128502	659857

Legend

- ? = 1-9 hours of data missing (Average includes estimations)
- ! = 10 or more hours of data missing (Average not calculated)
- # = Station out of service
- ↑ = Record high air temperature
- ↓ = Record low air temperature
- = Monthly Averages

Notes

- ¹ Temperatures are weighted averages based on individual penstock flow and temperature
- Highlighted cells in the TCD column indicate a TCD change was made on that day
- ² Current control point (see page 3 for more details)
- ³ Column not used this month

D A T E	Redding (RDD) Daily Air Temperatures (°F)																																					
	Actual			Forecasted																																		
	Previous Day			Current Day			1 Day			2 Days			3 Days			4 Days			5 Days			6 Days			7 Days			8 Days			9 Days			10 Days				
	↓	↑	Avg	↓	↑	Avg	↓	↑	Avg	↓	↑	Avg	↓	↑	Avg	↓	↑	Avg	↓	↑	Avg	↓	↑	Avg	↓	↑	Avg	↓	↑	Avg	↓	↑	Avg	↓	↑	Avg		
06/01	57	93	75.0	65	94	79.5	65	92	78.5	65	95	80.0	65	96	80.5	65	94	79.5	61	86	73.5	55	83	69.0	58	86	72.0	60	94	77.0	62	95	78.5	65	95	80.0		
06/02	64	97	80.5	66	94	80.0	65	97	81.0	65	98	81.5	63	95	79.0	59	83	71.0	54	82	68.0	55	87	71.0	65	99	82.0	65	99	82.0	65	95	80.0	65	96	80.5		
06/03	66	95	80.5	68	96	82.0	64	98	81.0	66	95	80.5	61	84	72.5	53	81	67.0	53	87	70.0	58	93	75.5	64	98	81.0	64	99	81.5	65	97	81.0	65	97	81.0		
06/04	67	97	82.0	67	99	83.0	64	98	81.0	61	85	73.0	52	78	65.0	51	84	67.5	56	92	74.0	61	97	79.0	63	101	82.0	65	102	83.5	67	98	82.5	67	97	82.0		
06/05	67	100	83.5	70	100	85.0	60	86	73.0	51	79	65.0	52	86	69.0	58	94	76.0	61	99	80.0	64	103	83.5	68	102	85.0	67	98	82.5	65	94	79.5	64	95	79.5		
06/06	68	97	82.5	62	84	73.0	51	80	65.5	52	88	70.0	60	97	78.5	63	102	82.5	66	104	85.0	68	102	85.0	69	98	83.5	66	97	81.5	65	92	78.5	65	94	79.5		
06/07	59	85	72.0	57	78	67.5	53	87	70.0	60	97	78.5	63	103	83.0	66	106	86.0	68	101	84.5	66	100	83.0	69	99	84.0	67	99	83.0	68	98	83.0	67	98	82.5		
06/08	57	78	67.5	61	87	74.0	60	97	78.5	63	104	83.5	67	107	87.0	69	100	84.5	68	98	83.0	66	98	82.0	68	100	84.0	68	99	83.5	67	95	81.0	66	94	80.0		
06/09	60	87	73.5	70	97	83.5	63	104	83.5	67	107	87.0	69	102	85.5	68	97	82.5	68	98	83.0	66	98	82.0	69	102	85.5	69	99	84.0	66	98	82.0	68	98	83.0		
06/10	67	96	81.5	60	102	81.0	67	105	86.0	69	101	85.0	69	99	84.0	68	99	83.5	67	99	83.0	67	100	83.5	67	100	83.5	66	95	80.5	66	93	79.5	66	95	80.5		
06/11	59	102	80.5	67	104	85.5	69	100	84.5	69	100	84.5	69	100	84.5	68	100	84.0	67	100	83.5	68	101	84.5	70	100	85.0	66	92	79.0	65	95	80.0	65	95	80.0		
06/12	63	105	84.0	72	102	87.0	66	100	83.0	66	98	82.0	67	100	83.5	68	103	85.5	69	102	85.5	69	100	84.5	69	99	84.0	65	94	79.5	60	88	74.0	62	95	78.5		
06/13	70	97	83.5	66	98	82.0	66	96	81.0	66	98	82.0	66	102	84.0	68	104	86.0	69	105	87.0	67	102	84.5	67	101	84.0	66	101	83.5	66	97	81.5	65	95	80.0		
06/14	65	101	83.0	69	97	83.0	66	95	80.5	65	101	83.0	68	105	86.5	70	106	88.0	68	103	85.5	66	99	82.5	67	101	84.0	67	98	82.5	66	94	80.0	66	98	82.0		
06/15	67	98	82.5	68	94	81.0	65	100	82.5	67	103	85.0	71	106	88.5	68	104	86.0	67	99	83.0	63	97	80.0	65	97	81.0	65	95	80.0	64	92	78.0	63	94	78.5		
06/16	68	94	81.0	67	99	83.0	69	104	86.5	71	106	88.5	69	105	87.0	67	100	83.5	64	97	80.5	64	97	80.5	64	90	77.0	63	93	78.0	65	92	78.5	63	92	77.5		
06/17	67	100	83.5	70	104	87.0	73	105	89.0	67	103	85.0	66	97	81.5	62	95	78.5	63	97	80.0	62	94	78.0	63	91	77.0	62	89	75.5	64	92	78.0	65	95	80.0		
06/18	69	105	87.0	81	105	93.0	68	101	84.5	64	93	78.5	60	90	75.0	62	97	79.5	62	95	78.5	60	91	75.5	64	90	77.0	62	91	76.5	67	95	81.0	65	96	80.5		
06/19	81	105	93.0	80	101	90.5	65	92	78.5	60	87	73.5	62	96	79.0	63	96	79.5	61	92	76.5	59	87	73.0	60	89	74.5	60	90	75.0	63	91	77.0	62	94	78.0		
06/20	80	104	92.0	73	90	81.5	64	88	76.0	64	94	79.0	63	95	79.0	62	93	77.5	60	86	73.0	57	85	71.0	59	89	74.0	62	93	77.5	64	95	79.5	65	97	81.0		
06/21	71	91	81.0	65	89	77.0	63	96	79.5	63	98	80.5	62	93	77.5	60	87	73.5	56	85	70.5	55	87	71.0	60	89	74.5	62	94	78.0	64	91	77.5	63	91	77.0		
06/22	65	89	77.0	72	94	83.0	64	99	81.5	64	95	79.5	61	89	75.0	57	85	71.0	55	86	70.5	57	90	73.5	62	93	77.5	63	98	80.5	67	96	81.5	67	97	82.0		
06/23	72	96	84.0	70	99	84.5	65	93	79.0	63	88	75.5	57	82	69.5	53	83	68.0	56	88	72.0	59	92	75.5	63	94	78.5	64	95	79.5	65	93	79.0	65	96	80.5		
06/24	69	99	84.0	74	94	84.0	63	89	76.0	59	81	70.0	54	80	67.0	55	87	71.0	57	90	73.5	60	94	77.0	64	96	80.0	66	99	82.5	67	95	81.0	66	95	80.5		
06/25	73	97	85.0	65	91	78.0	59	83	71.0	55	80	67.5	54	85	69.5	58	90	74.0	59	93	76.0	62	96	79.0	65	99	82.0	66	97	81.5	67	96	81.5	66	98	82.0		
06/26	64	91	77.5	59	83	71.0	54	79	66.5	55	85	70.0	57	89	73.0	60	88	74.0	62	93	77.5	64	96	80.0	66	97	81.5	66	97	81.5	66	95	80.5	66	98	82.0		
06/27	58	83	70.5	54	81	67.5	56	86	71.0	58	90	74.0	60	91	75.5	61	92	76.5	63	93	78.0	63	94	78.5	64	93	78.5	64	95	79.5	65	93	79.0	63	94	78.5		
06/28	54	81	67.5	61	86	73.5	58	90	74.0	60	92	76.0	61	93	77.0	63	96	79.5	64	97	80.5	66	99	82.5	68	102	85.0	68	103	85.5	69	99	84.0	67	97	82.0		
06/29	60	87	73.5	59	90	74.5	60	92	76.0	61	93	77.0	62	96	79.0	63	97	80.0	65	98	81.5	67	101	84.0	67	102	84.5	69	103	86.0	69	100	84.5	68	99	83.5		
06/30	58	91	74.5	61	93	77.0	61	92	76.5	62	93	77.5	62	94	78.0	64	97	80.5	65	101	83.0	68	103	85.5	69	102	85.5	67	99	83.0	68	97	82.5	67	98	82.5		
-																																						

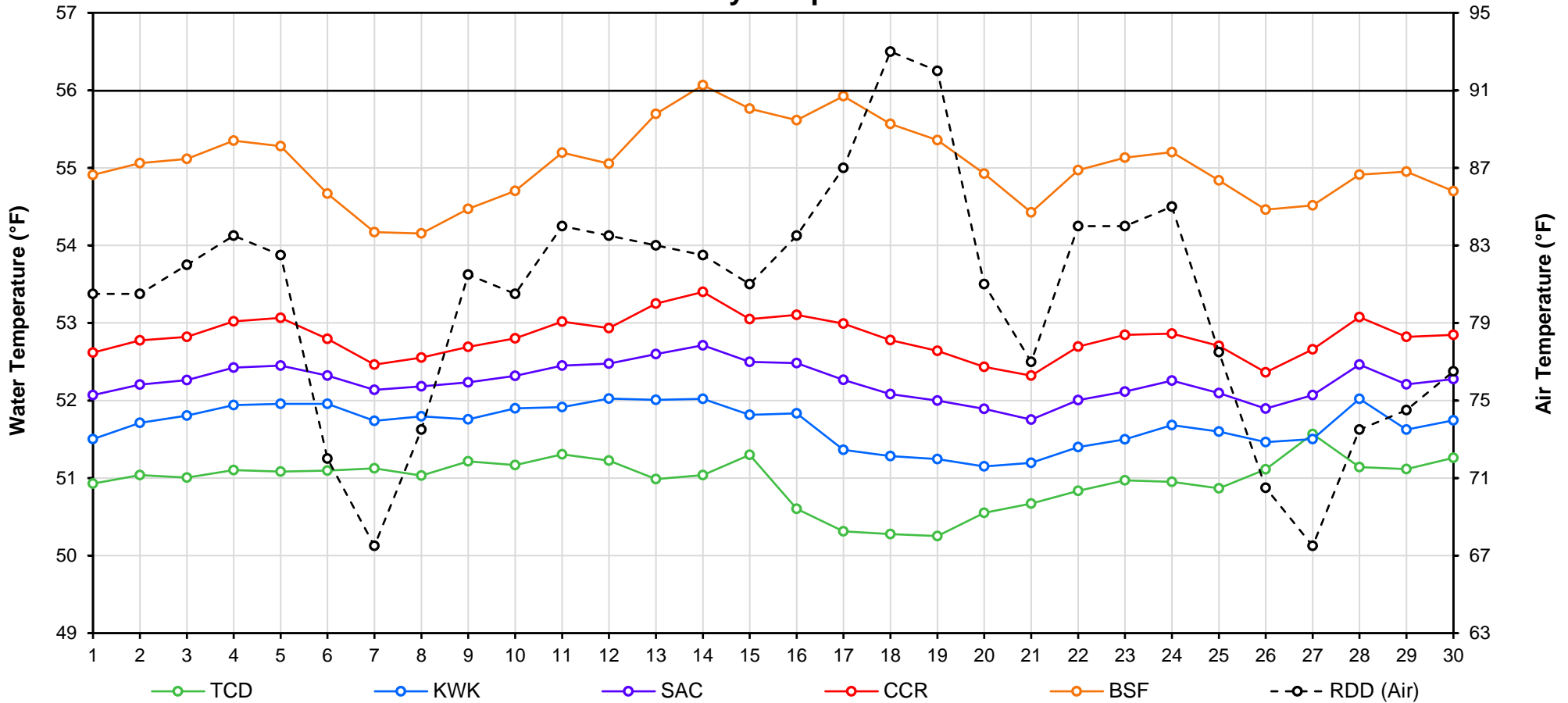
Web Links

- [10-Day Min/Max Forecast](#)
- [Previous Days Min/Max Actuals](#)

Legend

- NR = Forecasted temperatures not recorded
- 100** = Previous day actual temperatures in red and bolded indicate a record temperature for that date

Mean Daily Temperatures



Station Details			
Code	Body of Water	Location ¹	CDEC Link
TCD	N/A	Shasta Power Plant	N/A
SHD	Sacramento River	0.3 miles downstream of Shasta Power Plant	Click Here
SPP	N/A	Spring Creek Power Plant	N/A
KWK	Sacramento River	0.8 miles downstream of Keswick Dam	Click Here
SAC	Sacramento River	4.8 miles downstream of Keswick Dam	Click Here
CCR	Sacramento River	9.7 miles downstream of Keswick Dam	Click Here
BSF	Sacramento River	25 miles downstream of Keswick Dam	Click Here
JLF	Sacramento River	34 miles downstream of Keswick Dam	Click Here
BND	Sacramento River	41 miles downstream of Keswick Dam	Click Here
RDB	Sacramento River	58 miles downstream of Keswick Dam	Click Here
IGO	Clear Creek	7.3 miles downstream of Whiskeytown Dam	Click Here
LWS	Trinity River	1.1 miles downstream of Lewiston Dam	Click Here
DGC ²	Trinity River	19 miles downstream of Lewiston Dam	Click Here
NFH ³	Trinity River	38 miles downstream of Lewiston Dam	Click Here

Temperature Control Point		
Point	Temp. (°F)	Begin Date
BSF	56.0	5/15/2019

Notes

¹ Distances are approximate

² DGC is only reported in September

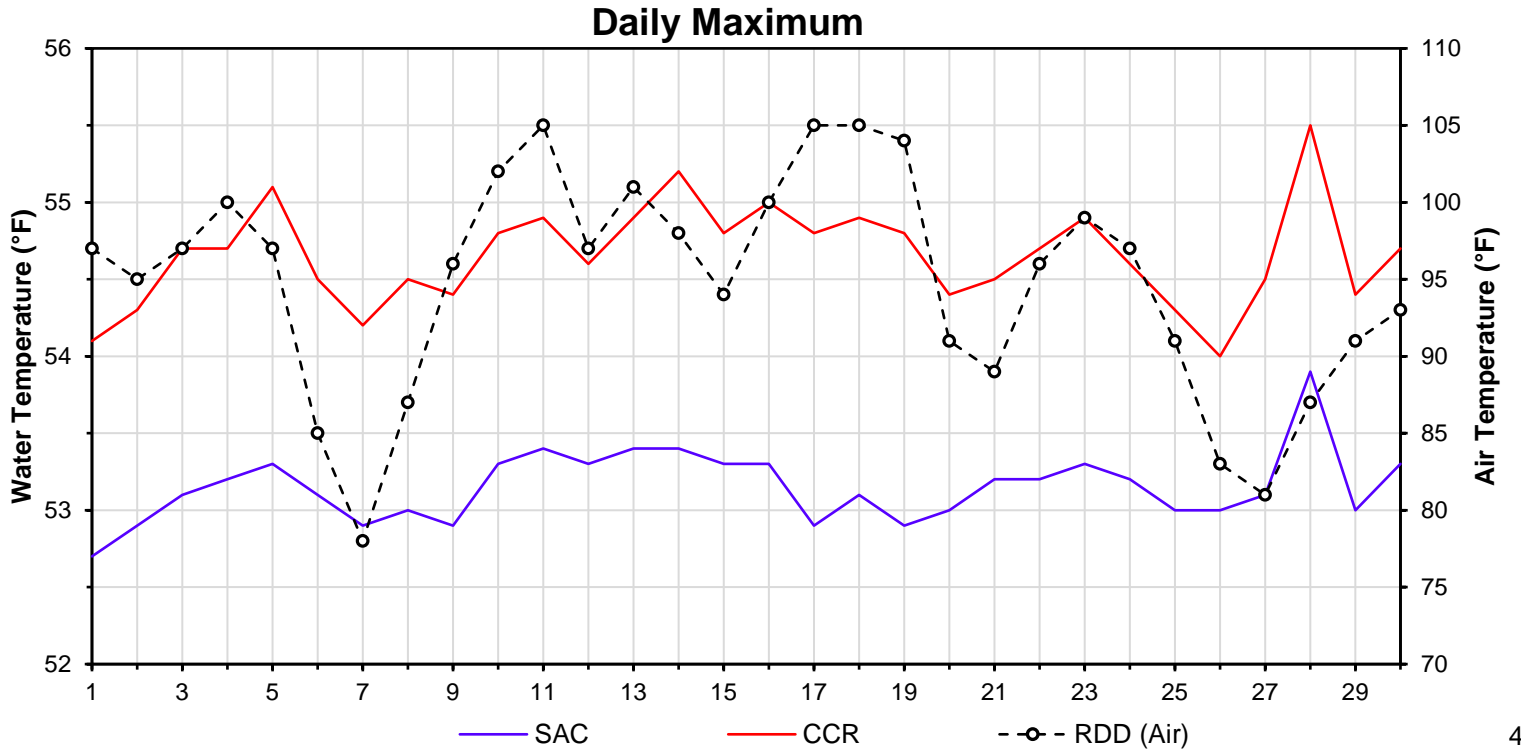
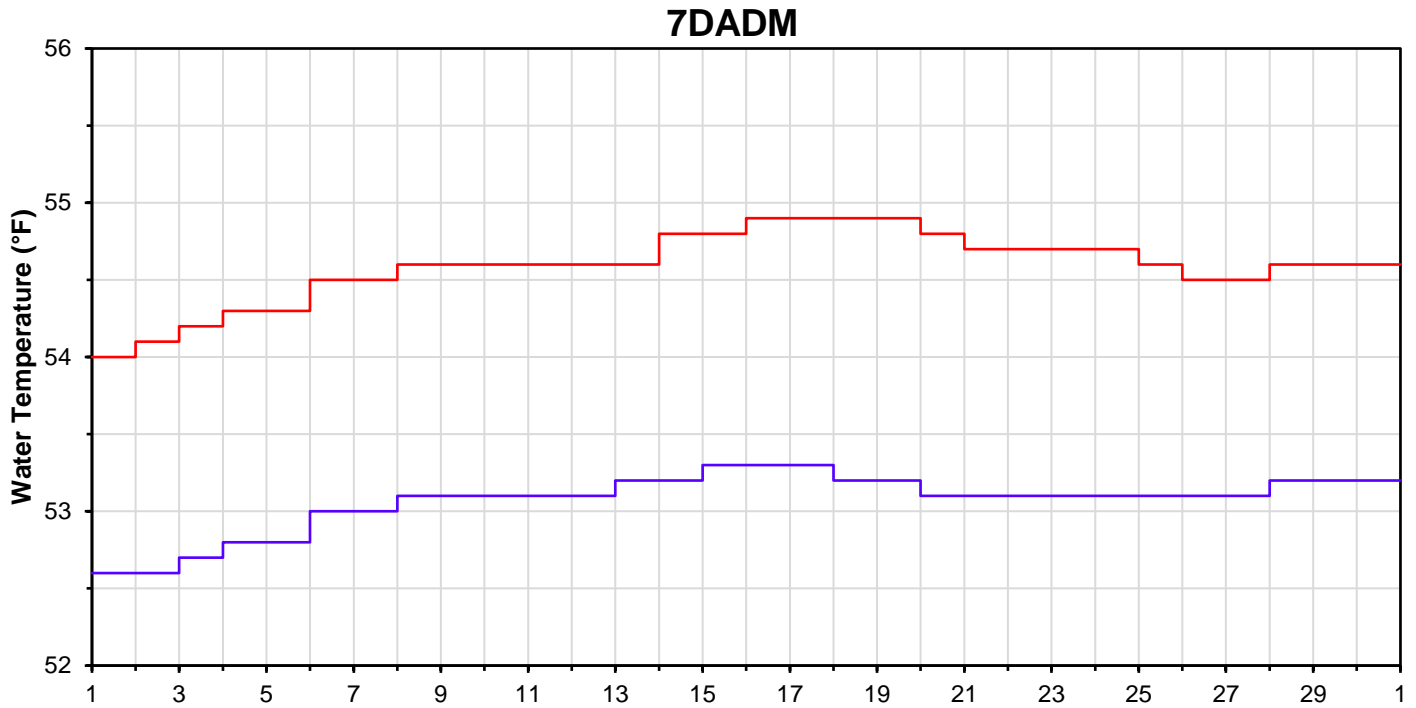
³ NFH is only reported in October, November and December

DATE	Daily Max		7DADM ¹		DAT ²
	SAC	CCR	SAC	CCR	BSF
06/01	52.7	54.1	52.6	54.0	54.9
06/02	52.9	54.3	52.6	54.1	55.1
06/03	53.1	54.7	52.7	54.2	55.1
06/04	53.2	54.7	52.8	54.3	55.4
06/05	53.3	55.1	52.8	54.3	55.3
06/06	53.1	54.5	53.0	54.5	54.7
06/07	52.9	54.2	53.0	54.5	54.2
06/08	53.0	54.5	53.1	54.6	54.2
06/09	52.9	54.4	53.1	54.6	54.5
06/10	53.3	54.8	53.1	54.6	54.7
06/11	53.4	54.9	53.1	54.6	55.2
06/12	53.3	54.6	53.1	54.6	55.1
06/13	53.4	54.9	53.2	54.6	55.7
06/14	53.4	55.2	53.2	54.8	56.1
06/15	53.3	54.8	53.3	54.8	55.8
06/16	53.3	55.0	53.3	54.9	55.6
06/17	52.9	54.8	53.3	54.9	55.9
06/18	53.1	54.9	53.2	54.9	55.6
06/19	52.9	54.8	53.2	54.9	55.4
06/20	53.0	54.4	53.1	54.8	54.9
06/21	53.2	54.5	53.1	54.7	54.4
06/22	53.2	54.7	53.1	54.7	55.0
06/23	53.3	54.9	53.1	54.7	55.1
06/24	53.2	54.6	53.1	54.7	55.2
06/25	53.0	54.3	53.1	54.6	54.8
06/26	53.0	54.0	53.1	54.5	54.5
06/27	53.1	54.5	53.1	54.5	54.5
06/28	53.9	55.5	53.2	54.6	54.9
06/29	53.0	54.4	53.2	54.6	55.0
06/30	53.3	54.7	53.2	54.6	54.7
-					

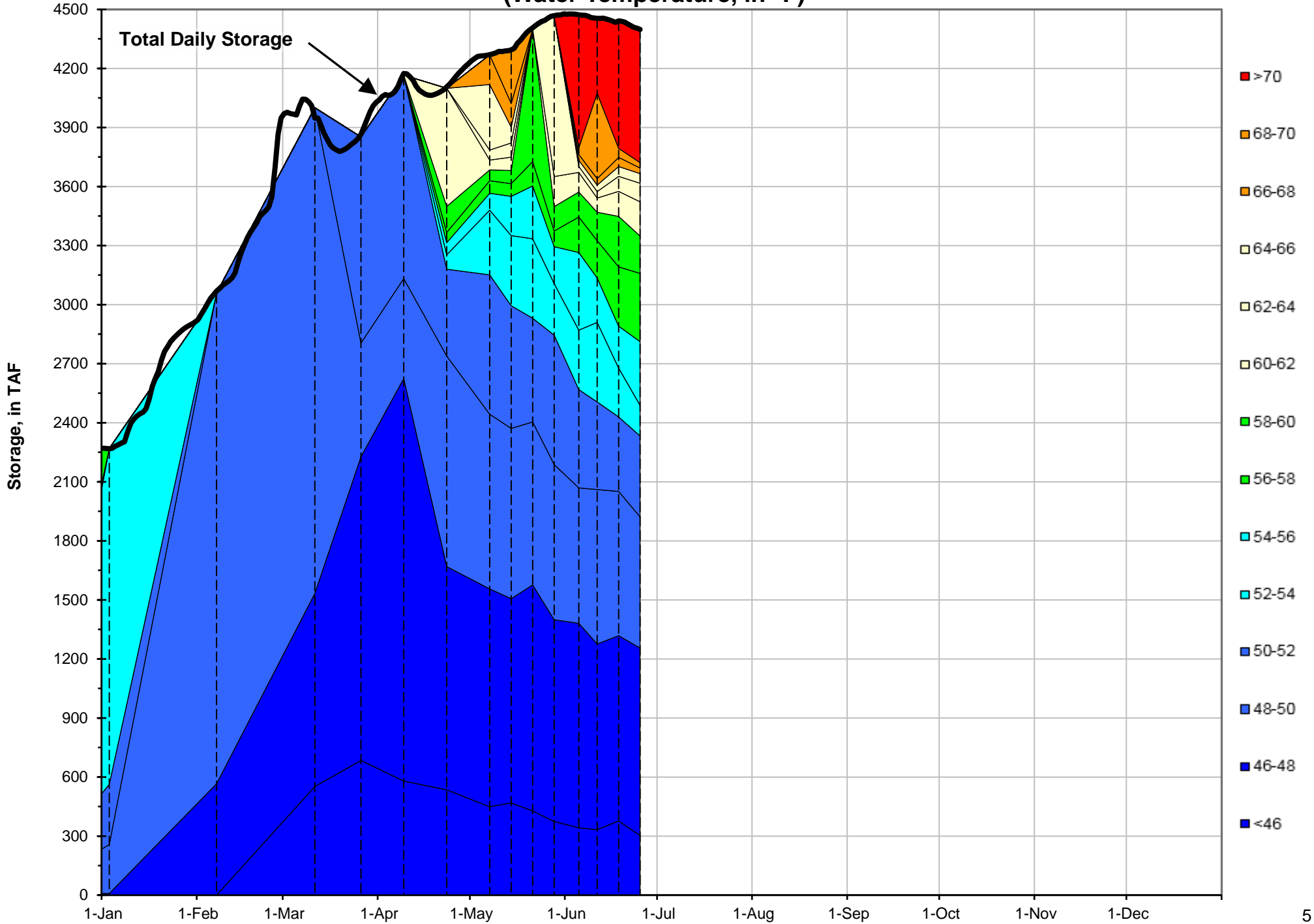
Notes

¹ 7DADM = 7-Day Average Daily Maximum

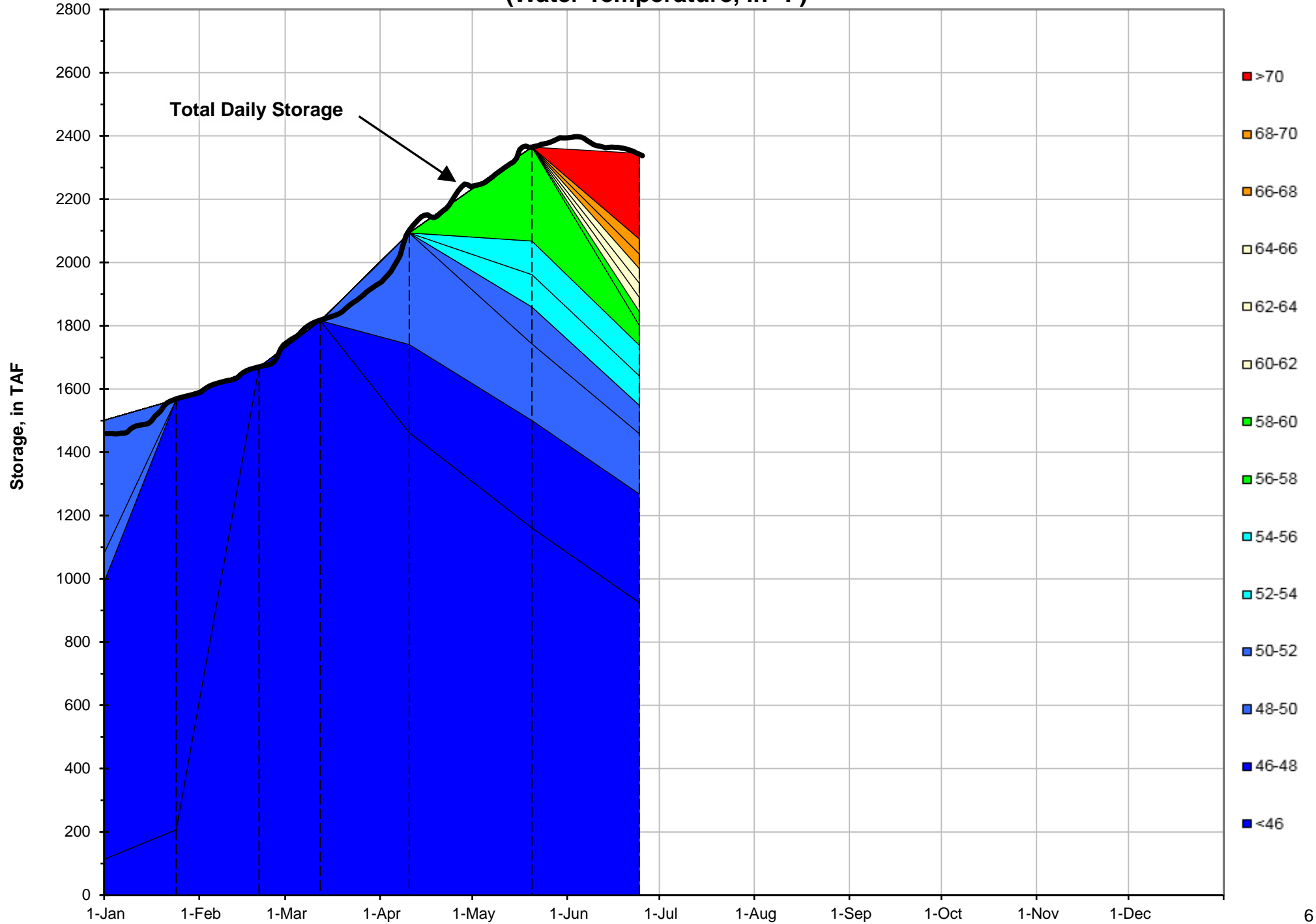
² DAT = Daily Average Temperature



Shasta Lake Isothermobaths - 2019 (Water Temperature, in °F)



Trinity Lake Isothermobaths - 2019 (Water Temperature, in °F)



Whiskeytown Lake Isothermobaths - 2019 (Water Temperature, in °F)

