

Northern CVP Water Temperature Report

June - 2018

Page	Description
1	- Mean Daily Water Temperature, Release Flow Rates and Air Temperatures with Monthly Averages
2	- Redding 10-Day Forecasted Air Temperatures
3	- Sacramento River Mean Daily Water Temperature, Air Temperature and 10-Day Forecasted Air Temperature Plot - Water Temperature Measuring Station Details - Temperature Control Point Details
4	- Daily Maximum and 7DADM
5	- Shasta Lake Isothermobaths Plot
6	- Trinity Lake Isothermobaths Plot
7	- Whiskeytown Lake Isothermobaths Plot
x	- TCD Configuration (External Link)



All Data in this Report is Preliminary and Subject to Change

DATE	Mean Daily Water Temperatures (°F)													Mean Daily Release (CFS)			Mean Daily Air Temperatures (°F)			
	TCD ¹	SHD	SPP ¹	KWK	SAC	CCR	BSF ²	JLF	BND	RDB	IGO	LWS	----- ³	Shasta Generation	Spring Creek P.P.	Keswick Total	RDD	BSF	RDB	LWS
May	51.2	50.2	50.2	51.6	52.1	52.8	54.9	56.5	57.0	58.4	53.5	50.9	-	8422	27	8707	70.6	67.6	68.5	61.7
06/01	51.7	50.5	50.8	51.9	52.4	53.1	55.0	56.3	56.7	58.0	54.1	51.7	-	8819	14	8940	72.5	68.7	69.8	59.5
06/02	# -	50.5	50.7	52.2	52.8	53.5	55.8	57.2	57.7	59.1	54.9	51.9	-	9250	14	8983	84.5	76.3	80.4	68.0
06/03	# -	50.1	50.8	52.3	53.0	53.8	56.1	57.8	58.5	60.0	53.1	52.0	-	8262	14	8981	81.5	77.2	79.7	70.6
06/04	# -	50.5	51.0	52.1	52.8	53.6	55.9	57.6	58.2	60.0	51.8	52.5	-	8922	14	8954	78.5	74.1	78.8	68.3
06/05	# -	50.3	50.3	52.1	52.6	53.2	55.1	56.6	57.2	58.8	51.8	52.7	-	8333	345	9239	73.0	71.6	72.5	62.7
06/06	52.2	50.5	51.6	51.9	52.5	53.2	55.1	56.4	56.9	58.3	53.0	52.5	-	9112	14	9990	73.5	70.2	70.1	65.0
06/07	52.2	50.6	51.1	52.3	52.8	53.4	55.4	56.8	57.3	58.7	53.7	52.2	-	9303	18	9789	73.5	70.9	70.4	65.0
06/08	52.5	50.6	50.4	52.4	52.9	53.6	55.8	57.3	57.8	59.1	53.3	51.9	-	7866	1527	9791	74.5	72.3	74.0	62.7
06/09	50.9	49.8	50.5	52.5	53.0	53.6	55.4	56.7	57.3	58.7	53.5	51.7	-	7624	1355	9695	67.0	68.3	67.6	58.0
06/10	50.6	49.7	50.5	51.8	52.6	53.3	55.2	56.3	56.6	57.7	53.7	51.6	-	7407	1859	9690	68.0	63.8	64.8	55.3
06/11	50.7	49.6	50.6	51.3	51.9	52.6	54.7	56.1	56.7	58.2	54.6	51.2	-	8014	1549	10005	75.0	70.9	73.7	65.6
06/12	50.7	49.6	50.8	51.3	52.0	52.8	55.0	56.5	57.0	58.5	55.9	51.2	-	7484	1916	9979	87.0	79.0	80.5	70.0
06/13	! -	49.4	51.0	51.3	51.9	52.6	54.9	56.5	57.1	58.9	56.1	50.9	-	-	1749	10546	81.5	79.1	80.9	69.5
06/14	! -	49.5	51.3	51.1	51.8	52.6	54.9	56.4	56.8	58.7	56.3	51.3	-	-	1308	10539	85.0	77.6	79.4	69.4
06/15	50.6	49.6	51.4	51.1	51.6	52.3	54.4	56.0	56.4	58.4	55.9	51.5	-	8096	2268	10802	76.0	73.1	74.0	67.9
06/16	50.4	49.4	51.5	51.1	51.5	52.2	54.3	55.9	56.2	58.1	55.7	51.1	-	8309	1556	10743	77.5	70.8	71.0	66.0
06/17	50.6	49.6	51.8	50.9	51.4	52.1	54.0	55.4	55.8	57.6	53.3	50.9	-	8473	1381	10696	69.0	66.0	65.0	63.2
06/18	51.0	49.8	51.7	51.1	51.7	52.3	54.1	55.4	55.7	57.3	52.1	51.3	-	9975	956	11233	75.5	73.3	72.9	68.3
06/19	51.1	49.8	51.8	51.4	51.9	52.5	54.3	55.6	55.9	57.5	52.2	51.5	-	9952	1077	11205	82.0	79.7	79.5	72.6
06/20	51.3	49.8	52.2	51.5	52.1	52.7	54.6	56.0	56.3	58.0	53.3	51.9	-	9662	1187	11305	80.5	77.4	76.8	71.2
06/21	51.4	49.9	52.5	51.7	52.1	52.8	54.7	56.2	56.5	58.3	54.6	51.9	-	9447	1396	11205	81.0	78.7	77.8	69.2
06/22	50.5 ?	49.7	52.6	51.9	52.4	53.1	55.0	56.4	56.6	58.4	55.6	52.2	-	8934	1481	11276	84.5	81.3	83.8	70.6
06/23	50.0	49.5	52.8	51.6	52.2	53.1	55.3	56.9	57.2	59.0	55.4	52.3	-	8539	1725	11041	90.5	86.3	88.9	72.1
06/24	50.4	49.8	52.9	51.4	52.0	52.8	54.9	56.5	56.9	59.0	55.9	52.6	-	9782	964	10845	92.5	88.6	90.0	76.5
06/25	51.0	50.2	53.1	51.4	51.9	52.5	54.5	56.1	56.5	58.6	56.3	53.0	-	10029	2129	12156	80.5	76.8	74.7	72.2
06/26	50.8	50.1	53.4	52.0	52.4	53.0	54.8	56.1	56.4	58.2	57.9	53.7	-	9791	1430	12113	84.5	77.3	76.8	71.0
06/27	50.5	49.8	53.5 ?	51.9	52.4	53.0	54.9	56.2	56.5	58.2	58.0	54.0	-	9394	2057	11735	80.0	75.4	75.6	73.0
06/28	50.8	50.1	53.7 ?	51.7	52.2	52.9	54.7	56.2	56.5	58.2	58.0	53.5	-	9941	1683	12125	79.5	77.5	74.7	69.3
06/29	50.1	49.7	53.6	51.8	52.3	53.0	54.7	56.0	56.3	58.1	58.5	53.8	-	9996	1824	12713	84.5	80.0	82.0	69.9
06/30	50.0	49.6	53.9	51.4	52.0	52.7	54.8	56.2	56.5	58.4	58.5	54.3	-	9915	1783	12658	90.0	86.0	88.9	73.1
-																				
Jun	50.9	49.9	51.8	51.7	52.2	52.9	54.9	56.4	56.8	58.5	54.9	52.2	-	8951	1220	10632	79.4	75.6	76.5	67.9

Total CFS	250631	36593	318972
Total AF	497116	72581	632668

Legend

- ? = 1-9 hours of data missing (Average includes estimations)
- ! = 10 or more hours of data missing (Average not calculated)
- # = Station out of service
- ↑ = Record high air temperature
- ↓ = Record low air temperature
- ☐ = Monthly Averages

Notes

- ¹ Temperatures are weighted averages based on individual penstock flow and temperature
- Highlighted cells in the TCD column indicate a TCD change was made on that day
- ² Current control point (see page 3 for more details)
- ³ Column not used this month

D A T E	Redding (RDD) Daily Air Temperatures (°F)																																						
	Actual			Forecasted																																			
	Previous Day			Current Day			1 Day			2 Days			3 Days			4 Days			5 Days			6 Days			7 Days			8 Days			9 Days			10 Days					
	↓	↑	Avg	↓	↑	Avg	↓	↑	Avg	↓	↑	Avg	↓	↑	Avg	↓	↑	Avg	↓	↑	Avg	↓	↑	Avg	↓	↑	Avg	↓	↑	Avg	↓	↑	Avg	↓	↑	Avg			
06/01	56	73	64.5	55	89	72.0	60	100	80.0	63	97	80.0	58	89	73.5	57	87	72.0	57	86	71.5	57	86	71.5	62	94	78.0	62	96	79.0	66	95	80.5	66	94	80.0			
06/02	55	90	72.5	68	100	84.0	64	98	81.0	59	91	75.0	57	91	74.0	57	87	72.0	57	86	71.5	59	89	74.0	61	90	75.5	59	88	73.5	61	89	75.0	63	91	77.0			
06/03	67	102	84.5	64	99	81.5	59	91	75.0	56	88	72.0	57	90	73.5	58	87	72.5	58	90	74.0	59	87	73.0	55	86	70.5	59	94	76.5	64	97	80.5	66	98	82.0			
06/04	63	100	81.5	63	92	77.5	56	88	72.0	58	89	73.5	58	89	73.5	59	91	75.0	58	86	72.0	54	84	69.0	60	93	76.5	64	99	81.5	66	97	81.5	67	98	82.5			
06/05	62	95	78.5	58	91	74.5	58	90	74.0	58	90	74.0	58	90	74.0	58	92	75.0	58	79	68.5	52	83	67.5	56	88	72.0	64	99	81.5	66	101	83.5	66	97	81.5	66	95	80.5
06/06	57	89	73.0	57	88	72.5	59	88	73.5	58	90	74.0	58	79	68.5	50	83	66.5	56	90	73.0	58	95	76.5	67	100	83.5	68	102	85.0	68	99	83.5	67	97	82.0			
06/07	57	90	73.5	60	87	73.5	57	90	73.5	57	78	67.5	49	83	66.0	56	93	74.5	58	99	78.5	59	100	79.5	68	100	84.0	66	98	82.0	67	96	81.5	66	96	81.0			
06/08	60	87	73.5	58	90	74.0	57	78	67.5	48	84	66.0	54	98	76.0	59	100	79.5	61	96	78.5	61	89	75.0	60	89	74.5	61	91	76.0	64	89	76.5	63	93	78.0			
06/09	57	92	74.5	67	73	70.0	47	80	63.5	54	94	74.0	60	100	80.0	61	96	78.5	60	90	75.0	60	90	75.0	63	93	78.0	63	89	76.0	64	91	77.5	65	94	79.5			
06/10	58	76	67.0	54	82	68.0	54	95	74.5	61	101	81.0	63	100	81.5	62	95	78.5	61	94	77.5	61	93	77.0	66	101	83.5	67	101	84.0	67	99	83.0	66	98	82.0			
06/11	54	82	68.0	57	94	75.5	62	102	82.0	63	100	81.5	63	98	80.5	62	94	78.0	61	92	76.5	62	95	78.5	71	100	85.5	70	103	86.5	69	99	84.0	67	96	81.5			
06/12	56	94	75.0	72	102	87.0	64	101	82.5	63	99	81.0	62	94	78.0	60	92	76.0	61	92	76.5	62	98	80.0	70	100	85.0	71	96	83.5	66	94	80.0	68	96	82.0			
06/13	71	103	87.0	64	98	81.0	62	98	80.0	62	94	78.0	58	86	72.0	59	89	74.0	60	92	76.0	61	92	76.5	67	95	81.0	68	98	83.0	69	98	83.5	68	99	83.5			
06/14	63	100	81.5	72	98	85.0	62	93	77.5	60	89	74.5	59	87	73.0	60	93	76.5	64	96	80.0	67	95	81.0	69	99	84.0	69	97	83.0	70	97	83.5	66	96	81.0			
06/15	71	99	85.0	62	93	77.5	61	89	75.0	61	87	74.0	59	93	76.0	64	98	81.0	68	98	83.0	66	98	82.0	71	102	86.5	70	101	85.5	69	97	83.0	66	96	81.0			
06/16	60	92	76.0	68	90	79.0	60	80	70.0	59	92	75.5	63	100	81.5	67	99	83.0	67	100	83.5	66	102	84.0	71	103	87.0	69	102	85.5	69	98	83.5	67	98	82.5			
06/17	65	90	77.5	59	82	70.5	59	91	75.0	63	99	81.0	67	99	83.0	67	100	83.5	68	102	85.0	66	101	83.5	73	103	88.0	68	100	84.0	68	96	82.0	66	97	81.5			
06/18	57	81	69.0	59	92	75.5	62	98	80.0	66	98	82.0	64	99	81.5	66	103	84.5	67	104	85.5	70	104	87.0	69	100	84.5	66	99	82.5	65	96	80.5	65	96	80.5			
06/19	59	92	75.5	69	98	83.5	65	98	81.5	63	100	81.5	65	104	84.5	67	105	86.0	70	105	87.5	66	99	82.5	67	98	82.5	66	99	82.5	65	95	80.0	67	97	82.0			
06/20	66	98	82.0	67	97	82.0	62	99	80.5	64	104	84.0	67	104	85.5	73	106	89.5	64	96	80.0	62	93	77.5	67	100	83.5	66	99	82.5	67	97	82.0	68	100	84.0			
06/21	65	96	80.5	64	99	81.5	68	104	86.0	71	104	87.5	71	107	89.0	67	97	82.0	65	98	81.5	64	98	81.0	67	101	84.0	67	98	82.5	67	96	81.5	66	97	81.5			
06/22	63	99	81.0	66	103	84.5	74	105	89.5	78	108	93.0	66	99	82.5	64	97	80.5	63	96	79.5	60	95	77.5	68	98	83.0	67	98	82.5	67	95	81.0	66	98	82.0			
06/23	65	104	84.5	77	105	91.0	78	108	93.0	70	99	84.5	64	101	82.5	64	97	80.5	63	93	78.0	60	95	77.5	69	93	81.0	67	97	82.0	67	98	82.5	67	99	83.0			
06/24	77	104	90.5	83	108	95.5	68	98	83.0	64	100	82.0	63	99	81.0	63	96	79.5	63	96	79.5	61	95	78.0	73	101	87.0	69	99	84.0	69	97	83.0	65	96	80.5			
06/25	78	107	92.5	67	97	82.0	64	99	81.5	64	98	81.0	63	97	80.0	63	96	79.5	66	100	83.0	70	103	86.5	72	104	88.0	70	102	86.0	68	94	81.0	64	96	80.0			
06/26	67	94	80.5	70	98	84.0	65	95	80.0	63	95	79.0	64	98	81.0	74	104	89.0	77	105	91.0	66	99	82.5	70	102	86.0	68	99	83.5	65	93	79.0	63	93	78.0			
06/27	70	99	84.5	63	96	79.5	63	95	79.0	69	99	84.0	74	107	90.5	77	106	91.5	68	97	82.5	64	94	79.0	66	92	79.0	64	94	79.0	65	97	81.0	69	101	85.0			
06/28	63	97	80.0	63	94	78.5	67	99	83.0	74	106	90.0	77	106	91.5	68	99	83.5	64	91	77.5	61	89	75.0	63	96	79.5	66	102	84.0	70	103	86.5	70	103	86.5			
06/29	63	96	79.5	71	98	84.5	68	104	86.0	72	107	89.5	69	102	85.5	65	93	79.0	61	90	75.5	59	91	75.0	66	99	82.5	67	100	83.5	68	98	83.0	67	99	83.0			
06/30	70	99	84.5	76	104	90.0	76	107	91.5	68	101	84.5	64	94	79.0	63	90	76.5	60	91	75.5	61	92	76.5	64	99	81.5	65	100	82.5	68	98	83.0	67	99	83.0			
-																																							

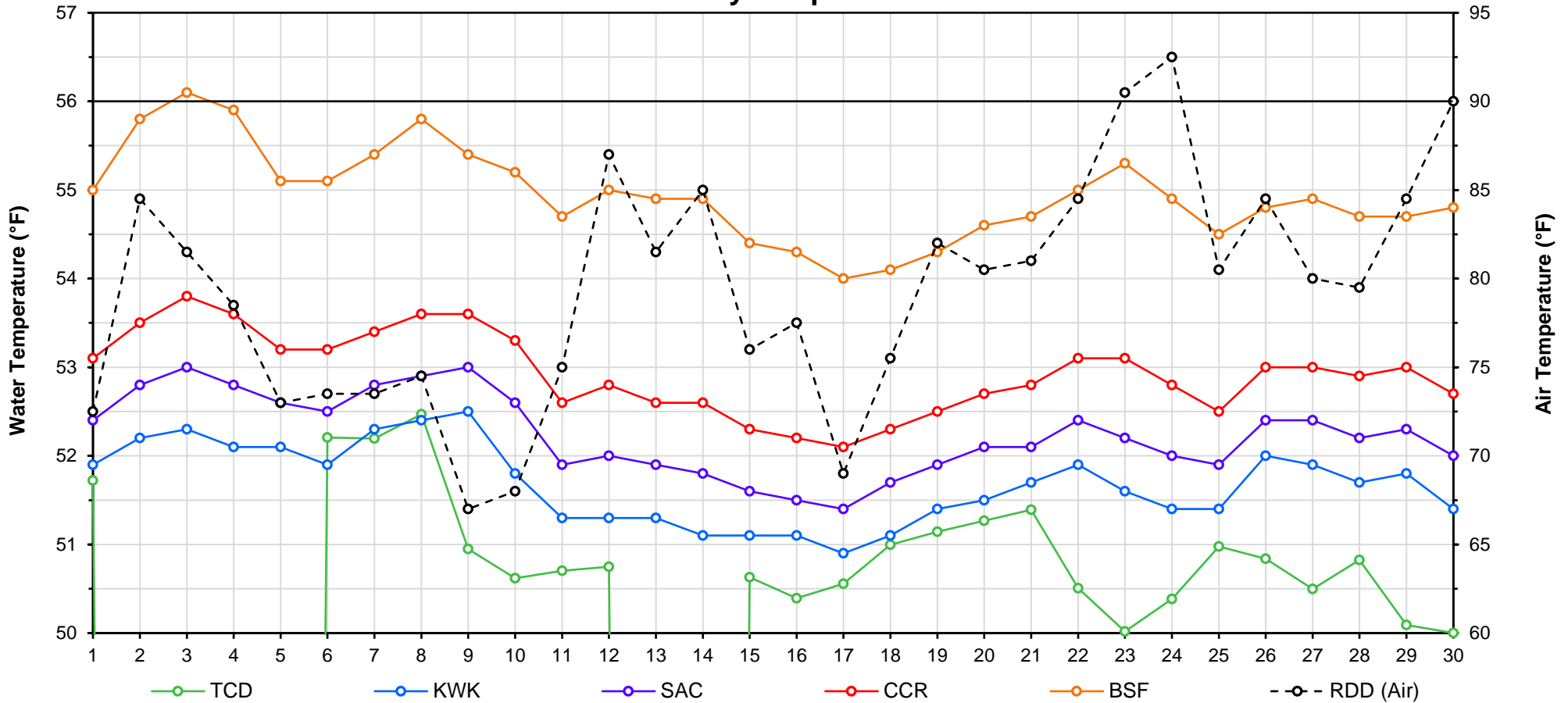
Web Links

- [10-Day Min/Max Forecast](#)
- [Previous Days Min/Max Actuals](#)

Legend

- NR = Forecasted temperatures not recorded
- 100** = Previous day actual temperatures in red and bolded indicate a record temperature for that date

Mean Daily Temperatures



Station Details			
Code	Body of Water	Location ¹	CDEC Link
TCD	N/A	Shasta Power Plant	N/A
SHD	Sacramento River	0.3 miles downstream of Shasta Power Plant	Click Here
SPP	N/A	Spring Creek Power Plant	N/A
KWK	Sacramento River	0.8 miles downstream of Keswick Dam	Click Here
SAC	Sacramento River	4.8 miles downstream of Keswick Dam	Click Here
CCR	Sacramento River	9.7 miles downstream of Keswick Dam	Click Here
BSF	Sacramento River	25 miles downstream of Keswick Dam	Click Here
JLF	Sacramento River	34 miles downstream of Keswick Dam	Click Here
BND	Sacramento River	41 miles downstream of Keswick Dam	Click Here
RDB	Sacramento River	58 miles downstream of Keswick Dam	Click Here
IGO	Clear Creek	7.3 miles downstream of Whiskeytown Dam	Click Here
LWS	Trinity River	1.1 miles downstream of Lewiston Dam	Click Here
DGC ²	Trinity River	19 miles downstream of Lewiston Dam	Click Here
NFH ³	Trinity River	38 miles downstream of Lewiston Dam	Click Here

Temperature Control Point		
Point	Temp. (°F)	Begin Date
BSF	56.0	05/25/2018

Notes

¹ Distances are approximate

² DGC is only reported in September

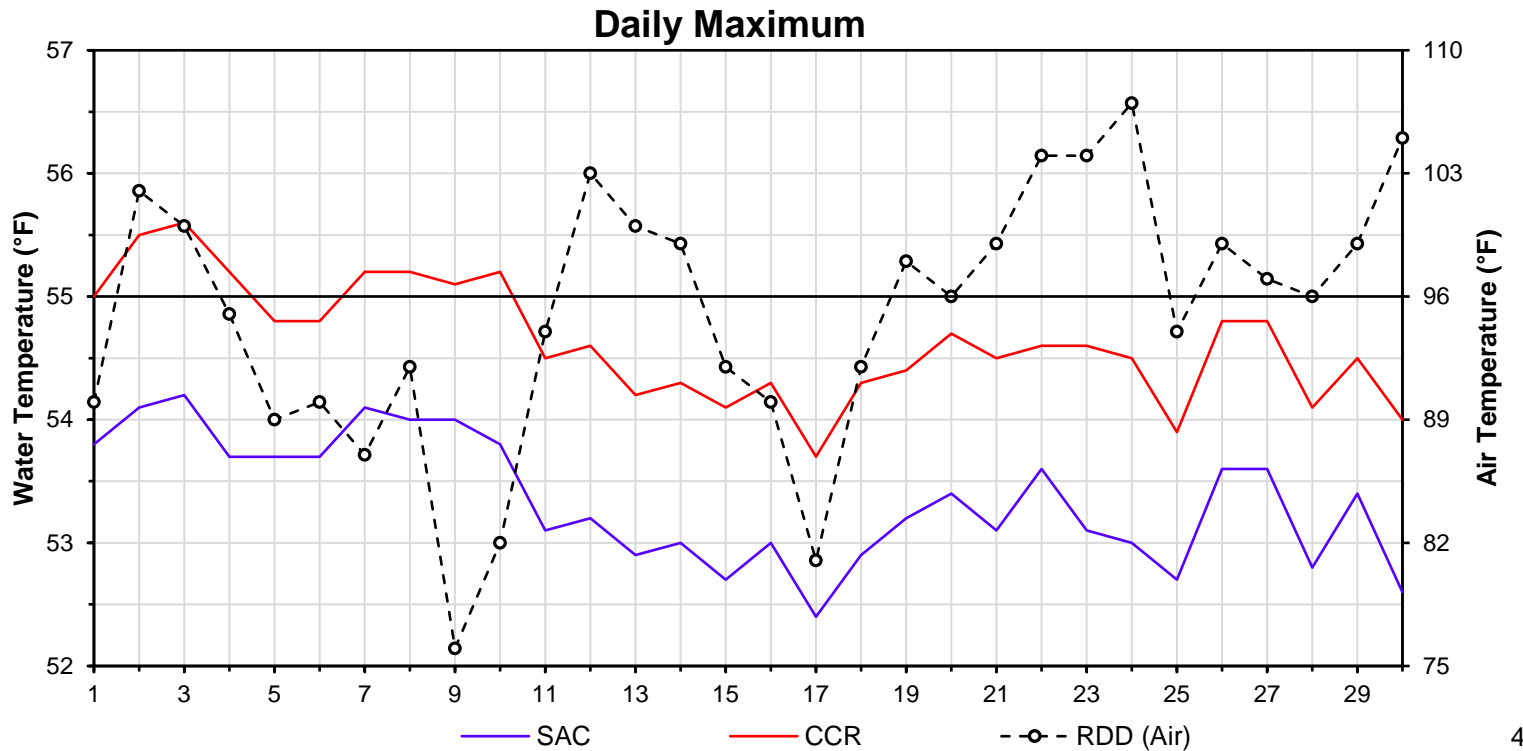
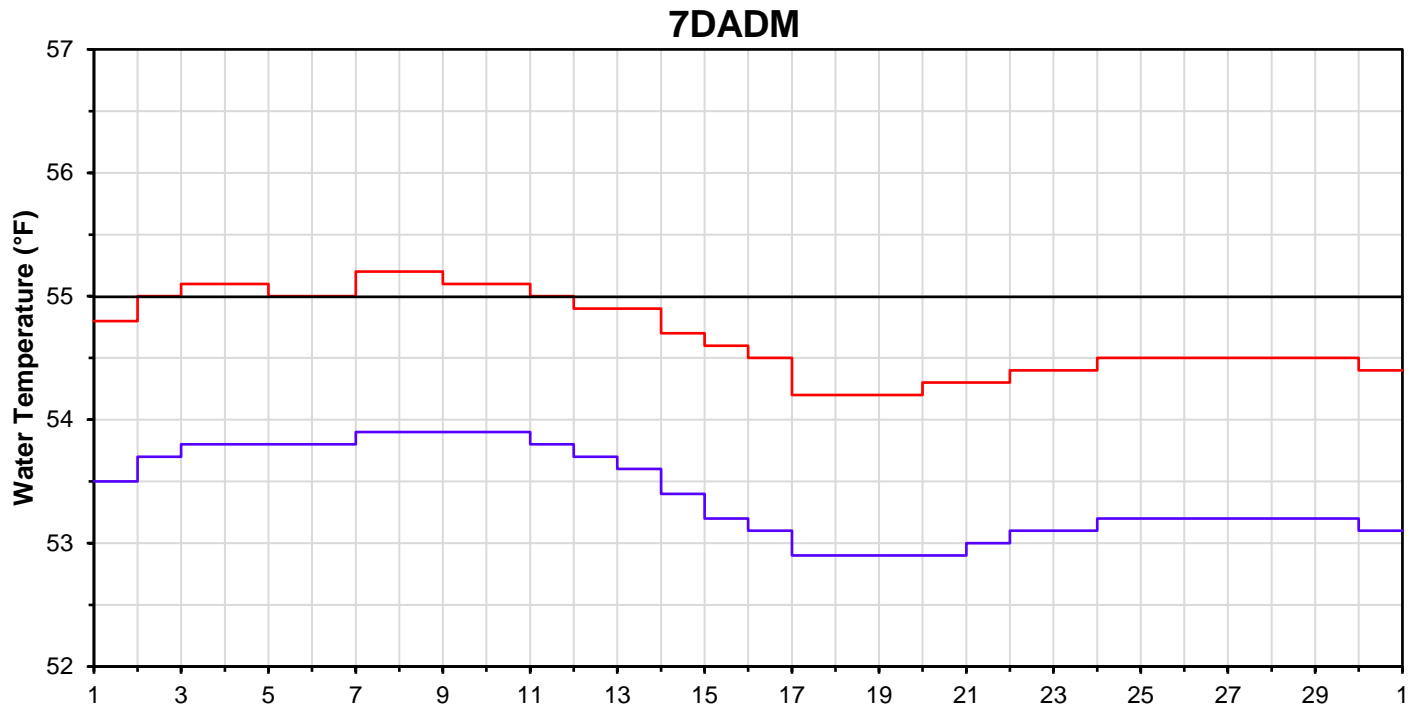
³ NFH is only reported in October, November and December

DATE	Daily Max		7DADM ¹		DAT ²
	SAC	CCR	SAC	CCR	BSF
06/01	53.8	55.0	53.5	54.8	55.0
06/02	54.1	55.5	53.7	55.0	55.8
06/03	54.2	55.6	53.8	55.1	56.1
06/04	53.7	55.2	53.8	55.1	55.9
06/05	53.7	54.8	53.8	55.0	55.1
06/06	53.7	54.8	53.8	55.0	55.1
06/07	54.1	55.2	53.9	55.2	55.4
06/08	54.0	55.2	53.9	55.2	55.8
06/09	54.0	55.1	53.9	55.1	55.4
06/10	53.8	55.2	53.9	55.1	55.2
06/11	53.1	54.5	53.8	55.0	54.7
06/12	53.2	54.6	53.7	54.9	55.0
06/13	52.9	54.2	53.6	54.9	54.9
06/14	53.0	54.3	53.4	54.7	54.9
06/15	52.7	54.1	53.2	54.6	54.4
06/16	53.0	54.3	53.1	54.5	54.3
06/17	52.4	53.7	52.9	54.2	54.0
06/18	52.9	54.3	52.9	54.2	54.1
06/19	53.2	54.4	52.9	54.2	54.3
06/20	53.4	54.7	52.9	54.3	54.6
06/21	53.1	54.5	53.0	54.3	54.7
06/22	53.6	54.6	53.1	54.4	55.0
06/23	53.1	54.6	53.1	54.4	55.3
06/24	53.0	54.5	53.2	54.5	54.9
06/25	52.7	53.9	53.2	54.5	54.5
06/26	53.6	54.8	53.2	54.5	54.8
06/27	53.6	54.8	53.2	54.5	54.9
06/28	52.8	54.1	53.2	54.5	54.7
06/29	53.4	54.5	53.2	54.5	54.7
06/30	52.6	54.0	53.1	54.4	54.8
-					

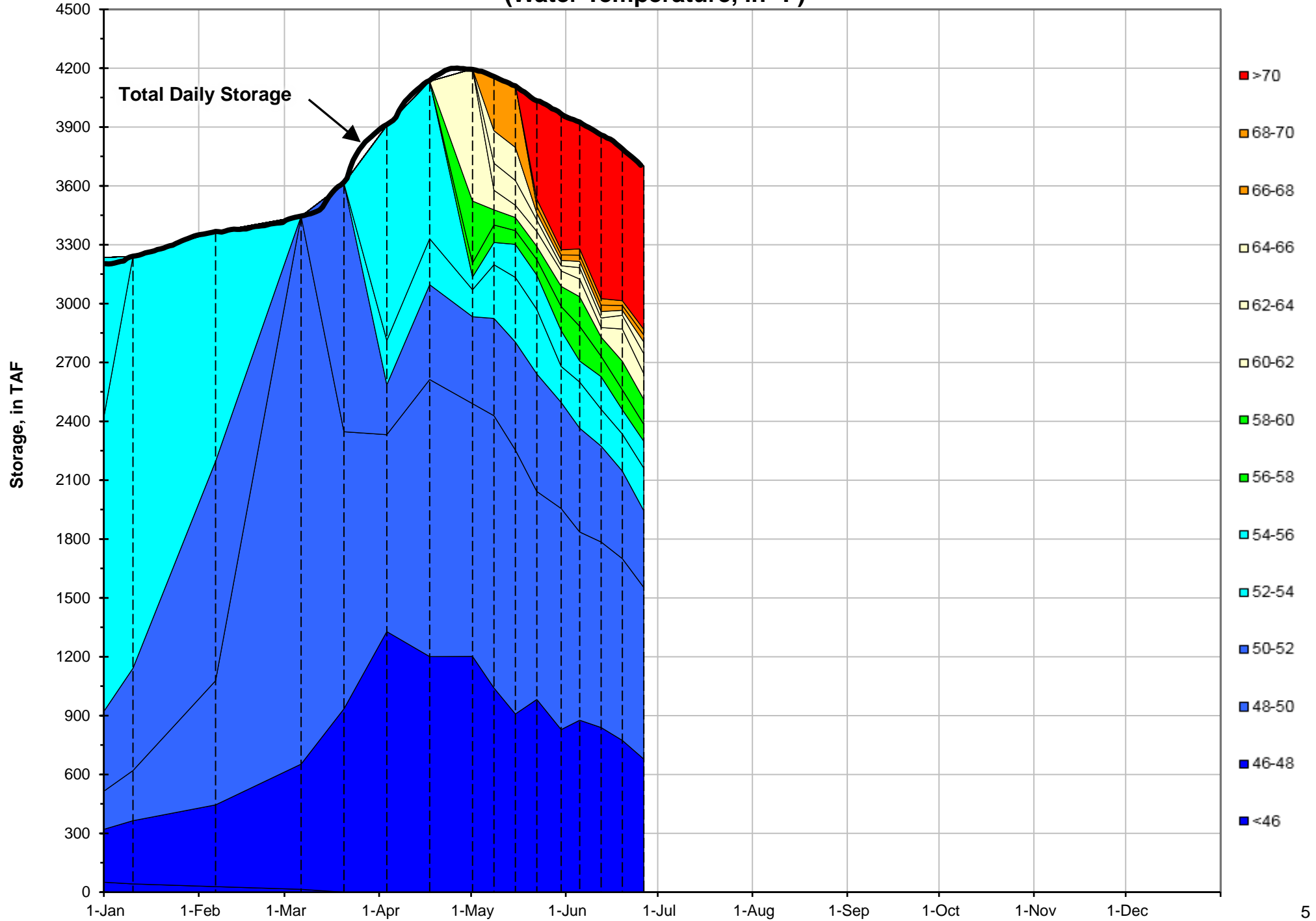
Notes

¹ 7DADM = 7-Day Average
Daily Maximum

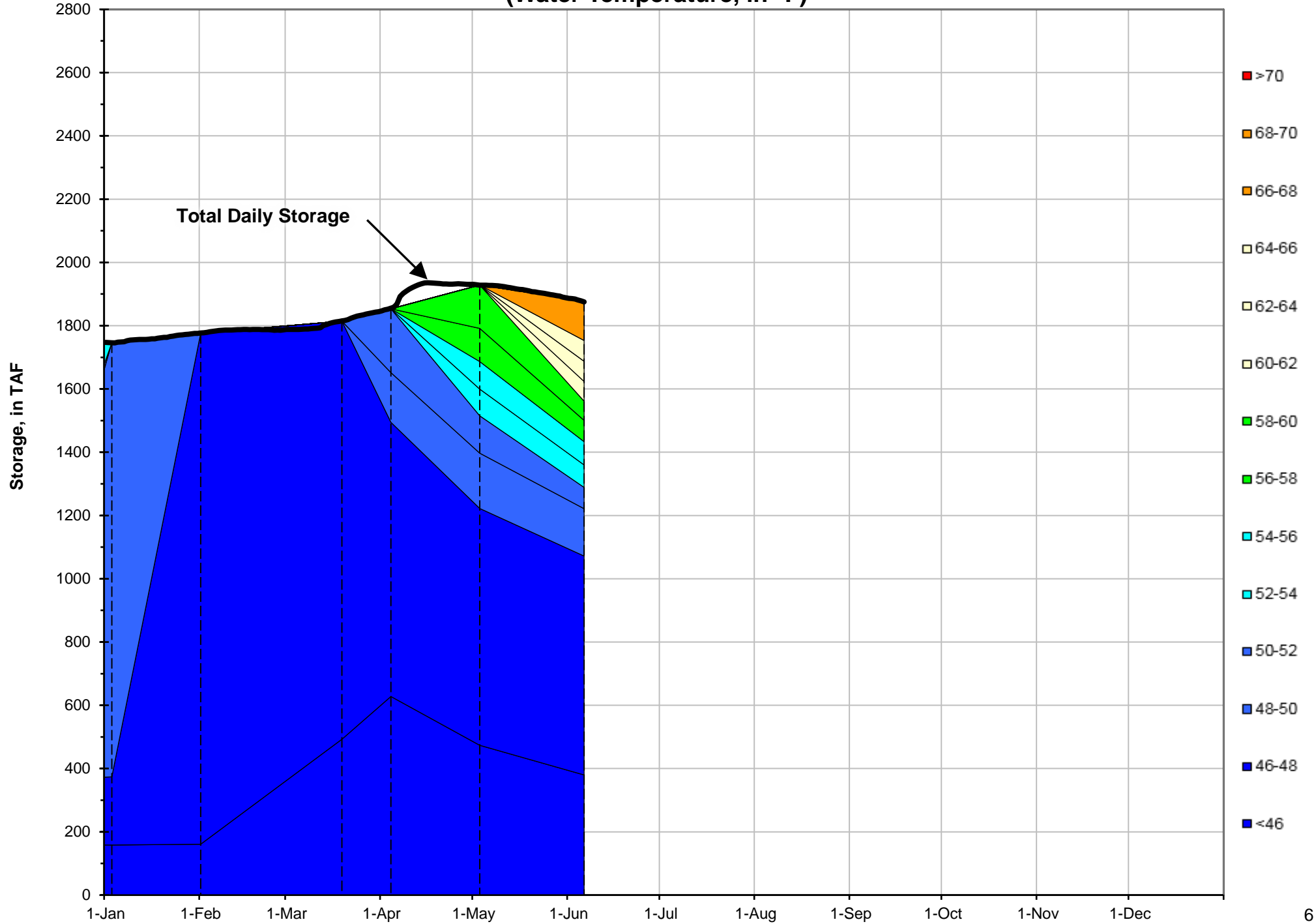
² DAT = Daily Average
Temperature



Shasta Lake Isothermobaths - 2018 (Water Temperature, in °F)



Trinity Lake Isothermobaths - 2018 (Water Temperature, in °F)



Whiskeytown Lake Isothermobaths - 2018 (Water Temperature, in °F)

