

Northern CVP Water Temperature Report

June - 2017

Page	Description
1	- Mean Daily Water Temperature, Release Flow Rates and Air Temperatures with Monthly Averages
2	- Redding 10-Day Forecasted Air Temperatures
3	- Sacramento River Mean Daily Water Temperature, Air Temperature and 10-Day Forecasted Air Temperature Plot - Water Temperature Measuring Station Details - Temperature Control Point Details
4	- Lake Shasta Isothermalbaths Plot
5	- Daily Maximum and 7DADM
x	- TCD Configuration (External Link)



All Data in this Report is Preliminary and Subject to Change

DATE	Mean Daily Water Temperatures (°F)													Mean Daily Release (CFS)			Mean Daily Air Temperatures (°F)				
	TCD ¹	SHD	SPP ¹	KWK	SAC	CCR	BSF ²	JLF	BND	RDB	IGO	LWS	----- ³	Shasta Generation	Spring Creek P.P.	Keswick Total	RDD	BSF	RDB	LWS	
May	51.2	50.2	50.2	51.5	51.9	52.5	54.5	56.1	56.5	57.9	52.8	46.1	-	8478	2284	10616	71.0	68.0	69.2	61.0	
06/01	50.8	49.8	50.3	51.4	51.9	52.5	54.9	56.6	57.2	58.7	54.0	46.6	-	8655	1881	10043	75.0	72.3	71.6	64.2	
06/02	50.7	49.7	50.4	51.4	51.8	52.4	54.9	56.8	57.4	59.2	54.1	46.7	-	8250	1654	13357	76.5	74.0	74.6	65.2	
06/03	51.0	50.0	50.5	51.2	51.6	52.3	54.7	56.5	57.2	58.9	54.3	46.7	-	8864	1650	10569	78.5	73.9	73.9	67.1	
06/04	51.0	49.9	50.6	51.3	51.8	52.4	54.6	56.4	57.1	58.8	52.3	47.2	-	8675	1660	10521	76.5	73.0	72.4	63.6	
06/05	51.1	50.1	50.7	51.4	51.8	52.4	54.5	56.3	56.9	58.6	51.5	47.0	-	9573	1158	10474	80.5	73.2	74.3	64.1	
06/06	51.1	49.9	50.8	51.4	51.9	52.5	54.7	56.4	56.9	58.6	52.0	46.8	-	8769	1568	10517	78.0	74.0	74.9	67.8	
06/07	51.2	50.1	50.9	51.4	51.8	52.3	54.4	56.1	56.7	58.4	52.4	46.9	-	8682	1341	10531	74.0	70.8	70.7	63.6	
06/08	51.4	49.8	51.1	51.2	51.3	51.7	53.1	54.6	55.2	56.5	52.2	46.5	-	7706	2265	9736	64.0	57.8	58.4	55.4	
06/09	51.3	50.1	51.1	51.2	51.6	52.2	53.8	55.1	55.2	56.1	53.6	46.5	-	7754	1648	9581	67.0	61.9	65.2	57.2	
06/10	51.3	49.8	51.2	51.3	51.6	52.1	53.9	55.4	55.6	56.9	53.0	46.5	-	7360	1731	9587	↓ 61.5	59.7	61.8	51.8	
06/11	51.6	50.1	51.2	51.4	51.7	52.2	53.7	55.0	55.3	56.4	53.1	46.0	-	8007	1876	9515	62.0	60.2	60.3	47.3	
06/12	51.0	49.9	51.3	51.4	51.6	52.1	53.8	55.2	55.5	56.7	53.5	45.7	-	7800	1696	9578	↓ 61.5	60.5	60.0	54.3	
06/13	51.2	49.9	51.2	51.6	52.1	52.8	54.8	56.3	56.6	57.7	54.8	46.5	-	6926	2358	9533	71.0	68.2	68.8	58.4	
06/14	51.1	? 49.9	51.3	51.9	52.2	52.8	54.9	56.7	57.1	58.7	55.1	46.9	-	7311	1967	9529	74.5	71.7	73.3	62.5	
06/15	50.7	49.8	51.3	52.3	52.9	53.5	55.6	57.5	57.8	59.4	55.4	47.1	-	7596	2207	9544	77.0	74.7	78.3	65.4	
06/16	50.4	49.5	51.4	51.8	52.5	53.3	55.9	58.1	58.6	60.5	56.3	47.4	-	6783	2289	9536	82.5	79.1	83.3	70.7	
06/17	50.4	49.3	51.3	51.8	52.4	53.2	56.0	58.2	58.7	60.7	56.2	47.9	-	6731	2543	9459	87.5	81.9	86.1	71.5	
06/18	50.1	49.2	51.4	51.4	52.1	53.1	56.2	58.6	59.3	61.4	53.7	47.8	-	8413	1277	9191	↑ 96.5	90.5	92.0	75.3	
06/19	49.9	48.9	51.4	51.3	52.0	52.8	55.4	57.9	58.6	61.0	52.5	47.7	-	7878	1858	9330	↑ 94.5	89.2	88.3	78.1	
06/20	50.0	49.0	51.5	50.9	51.6	52.4	55.3	57.8	58.3	60.4	52.8	47.7	-	8356	1175	9541	↑ 95.0	89.7	89.7	76.9	
06/21	49.9	49.1	51.5	51.0	51.7	52.6	55.5	58.1	58.6	60.9	53.3	47.8	-	8973	1175	9540	↑ 97.5	90.9	92.5	76.8	
06/22	49.8	48.9	51.6	51.0	51.6	52.5	55.4	57.9	? 58.5	60.9	54.0	48.0	-	8529	1572	9503	↑ 97.0	92.4	95.0	75.7	
06/23	49.9	49.0	51.7	50.8	51.4	52.2	54.9	57.3	! -	60.1	54.6	48.0	-	8453	1646	9450	95.0	91.3	90.9	76.1	
06/24	50.1	49.1	51.8	50.9	51.5	52.2	54.7	57.1	? 57.6	59.9	55.8	48.0	-	8255	1661	9536	93.0	87.7	88.0	78.3	
06/25	49.8	49.0	51.9	51.0	51.6	52.4	55.2	57.7	58.1	60.5	56.6	48.0	-	7278	2181	9496	91.0	84.5	83.3	76.5	
06/26	50.5	49.4	51.9	50.9	51.5	52.3	54.8	57.1	57.5	59.9	56.2	48.2	-	8557	1786	9466	80.5	75.7	74.5	73.1	
06/27	50.6	49.5	52.0	51.2	51.7	52.3	54.5	56.5	56.9	59.1	56.3	48.4	-	7987	1957	9467	79.0	74.9	75.2	71.8	
06/28	50.4	49.2	52.0	51.4	51.9	52.7	55.0	57.0	57.3	59.2	56.2	48.2	-	8599	999	9422	80.5	76.1	76.7	69.5	
06/29	50.4	? 49.4	52.0	51.2	51.8	52.5	54.9	57.0	57.4	59.6	56.5	48.4	-	8237	1804	9455	83.5	79.5	79.2	70.9	
06/30	50.5	49.3	52.1	51.1	51.7	52.5	54.8	56.9	57.3	59.5	56.5	48.4	-	8466	1606	9380	85.5	79.0	77.5	73.0	
-																					
Jun	50.6	49.6	51.3	51.3	51.8	52.5	54.8	56.8	57.3	59.1	54.3	47.3	-	8114	1740	9813	80.5	76.3	77.0	67.4	

Total CFS	243423	52189	294387
Total AF	482820	103515	583905

Legend

- ? = 1-9 hours of data missing (Average includes estimations)
- ! = 10 or more hours of data missing (Average not calculated)
- # = Station out of service
- ↑ = Record high air temperature
- ↓ = Record low air temperature
- = Monthly Averages

Notes

- ¹ Temperatures are weighted averages based on individual penstock flow and temperature
- Highlighted cells in the TCD column indicate a TCD change was made on that day
- ² Current control point (see page 3 for more details)
- ³ Column not used this month

D A T E	Redding (RDD) Daily Air Temperatures (°F)																																					
	Actual			Forecasted																																		
	Previous Day			Current Day			1 Day			2 Days			3 Days			4 Days			5 Days			6 Days			7 Days			8 Days			9 Days			10 Days				
	↓	↑	Avg	↓	↑	Avg	↓	↑	Avg	↓	↑	Avg	↓	↑	Avg	↓	↑	Avg	↓	↑	Avg	↓	↑	Avg	↓	↑	Avg	↓	↑	Avg	↓	↑	Avg	↓	↑	Avg		
06/01	60	79	69.5	64	87	75.5	57	92	74.5	58	92	75.0	58	87	72.5	56	92	74.0	59	97	78.0	61	97	79.0	64	94	79.0	63	94	78.5	63	92	77.5	59	89	74.0		
06/02	64	86	75.0	60	93	76.5	59	92	75.5	59	86	72.5	55	93	74.0	59	97	78.0	60	94	77.0	61	89	75.0	56	84	70.0	56	84	70.0	60	87	73.5	61	92	76.5		
06/03	60	93	76.5	66	92	79.0	59	88	73.5	56	94	75.0	58	96	77.0	59	93	76.0	60	84	72.0	57	82	69.5	56	80	68.0	57	82	69.5	58	85	71.5	59	90	74.5		
06/04	64	93	78.5	63	88	75.5	56	94	75.0	58	95	76.5	59	93	76.0	60	79	69.5	57	78	67.5	52	80	66.0	55	81	68.0	59	88	73.5	61	94	77.5	62	93	77.5		
06/05	62	91	76.5	69	94	81.5	59	95	77.0	58	90	74.0	57	71	64.0	55	73	64.0	47	74	60.5	50	79	64.5	59	91	75.0	61	94	77.5	62	93	77.5	63	93	78.0		
06/06	65	96	80.5	62	95	78.5	58	89	73.5	56	71	63.5	55	72	63.5	51	73	62.0	51	82	66.5	53	88	70.5	59	90	74.5	61	91	76.0	62	94	78.0	64	97	80.5		
06/07	61	95	78.0	61	88	74.5	57	71	64.0	54	75	64.5	51	72	61.5	51	73	62.0	50	82	66.0	55	88	71.5	60	89	74.5	61	85	73.0	61	84	72.5	62	87	74.5		
06/08	60	88	74.0	56	72	64.0	53	76	64.5	51	71	61.0	50	72	61.0	51	82	66.5	54	87	70.5	58	90	74.0	62	96	79.0	66	101	83.5	66	98	82.0	66	95	80.5		
06/09	56	72	64.0	57	76	66.5	51	71	61.0	50	66	58.0	51	77	64.0	52	86	69.0	57	89	73.0	57	94	75.5	63	96	79.5	69	99	84.0	69	98	83.5	67	98	82.5		
06/10	57	77	67.0	51	71	51.0	50	70	60.0	50	76	63.0	52	86	69.0	56	89	72.5	57	91	74.0	63	98	80.5	72	102	87.0	71	101	86.0	70	100	85.0	68	99	83.5		
06/11	50	73	61.5	54	68	61.0	50	74	62.0	52	84	68.0	54	89	71.5	58	91	74.5	65	99	82.0	68	101	84.5	71	104	87.5	71	105	88.0	69	102	85.5	70	101	85.5		
06/12	53	71	62.0	50	74	62.0	50	84	67.0	54	90	72.0	59	92	75.5	65	98	81.5	68	100	84.0	69	104	86.5	75	105	90.0	72	104	88.0	70	102	86.0	69	101	85.0		
06/13	49	74	61.5	58	84	71.0	54	89	71.5	58	91	74.5	64	98	81.0	68	102	85.0	69	105	87.0	70	105	87.5	71	103	87.0	70	105	87.5	70	101	85.5	68	100	84.0		
06/14	57	85	71.0	57	90	73.5	57	92	74.5	63	98	80.5	65	101	83.0	71	106	88.5	71	105	88.0	70	105	87.5	75	106	90.5	71	104	87.5	68	100	84.0	66	97	81.5		
06/15	56	93	74.5	62	93	77.5	64	97	80.5	67	101	84.0	72	107	89.5	72	107	89.5	72	107	89.5	72	105	88.5	73	103	88.0	68	100	84.0	66	97	81.5	64	94	79.0		
06/16	60	94	77.0	66	98	82.0	70	102	86.0	76	109	92.5	74	109	91.5	73	109	91.0	72	107	89.5	70	103	86.5	71	102	86.5	65	99	82.0	67	96	81.5	66	96	81.0		
06/17	66	99	82.5	72	102	87.0	75	109	92.0	74	110	92.0	74	110	92.0	72	106	89.0	71	104	87.5	67	101	84.0	66	98	82.0	66	99	82.5	66	98	82.0	65	96	80.5		
06/18	72	103	87.5	83	109	96.0	78	110	94.0	74	109	91.5	73	109	91.0	73	107	90.0	69	104	86.5	65	102	83.5	68	100	84.0	67	99	83.0	65	96	80.5	64	96	80.0		
06/19	83	110	96.5	76	109	92.5	74	110	92.0	75	111	93.0	75	110	92.5	71	106	88.5	69	105	87.0	68	100	84.0	69	97	83.0	66	97	81.5	66	93	79.5	64	95	79.5		
06/20	76	113	94.5	79	111	95.0	73	111	92.0	75	111	93.0	71	107	89.0	70	108	89.0	68	101	84.5	66	97	81.5	68	96	82.0	64	94	79.0	64	93	78.5	64	94	79.0		
06/21	79	111	95.0	86	110	98.0	75	111	93.0	72	108	90.0	71	108	89.5	70	102	86.0	67	97	82.0	63	92	77.5	66	96	81.0	65	95	80.0	66	95	80.5	65	95	80.0		
06/22	85	110	97.5	85	112	98.5	72	110	91.0	71	110	90.5	72	104	88.0	68	99	83.5	64	95	79.5	63	97	80.0	66	99	82.5	66	102	84.0	67	100	83.5	67	98	82.5		
06/23	85	109	97.0	87	109	98.0	74	109	91.5	73	104	88.5	68	99	83.5	65	97	81.0	65	98	81.5	66	97	81.5	66	98	82.0	64	99	81.5	66	94	80.0	65	96	80.5		
06/24	80	110	95.0	75	111	93.0	74	102	88.0	72	97	84.5	65	96	80.5	65	98	81.5	66	98	82.0	67	99	83.0	70	104	87.0	70	101	85.5	70	100	85.0	69	99	84.0		
06/25	73	113	93.0	80	104	92.0	67	97	82.0	63	96	79.5	64	98	81.0	68	102	85.0	68	101	84.5	70	100	85.0	71	101	86.0	67	101	84.0	66	98	82.0	66	98	82.0		
06/26	79	103	91.0	69	96	82.5	62	95	78.5	65	99	82.0	66	101	83.5	68	101	84.5	68	99	83.5	70	102	86.0	69	99	84.0	67	97	82.0	66	96	81.0	65	97	81.0		
06/27	68	93	80.5	62	95	78.5	64	97	80.5	66	102	84.0	68	102	85.0	69	104	86.5	69	101	85.0	67	97	82.0	67	94	80.5	65	95	80.0	64	95	79.5	66	97	81.5		
06/28	62	96	79.0	65	98	81.5	66	102	84.0	68	104	86.0	69	104	86.5	71	104	87.5	69	99	84.0	67	98	82.5	67	98	82.5	66	100	83.0	66	100	83.0	67	98	82.5		
06/29	64	97	80.5	68	100	84.0	70	103	86.5	69	103	86.0	70	104	87.0	69	99	84.0	65	98	81.5	63	98	80.5	67	101	84.0	68	104	86.0	69	103	86.0	69	102	85.5		
06/30	66	101	83.5	69	103	86.0	68	102	85.0	70	103	86.5	69	100	84.5	66	96	81.0	63	96	79.5	65	99	82.0	67	101	84.0	67	103	85.0	67	101	84.0	68	101	84.5		
-																																						

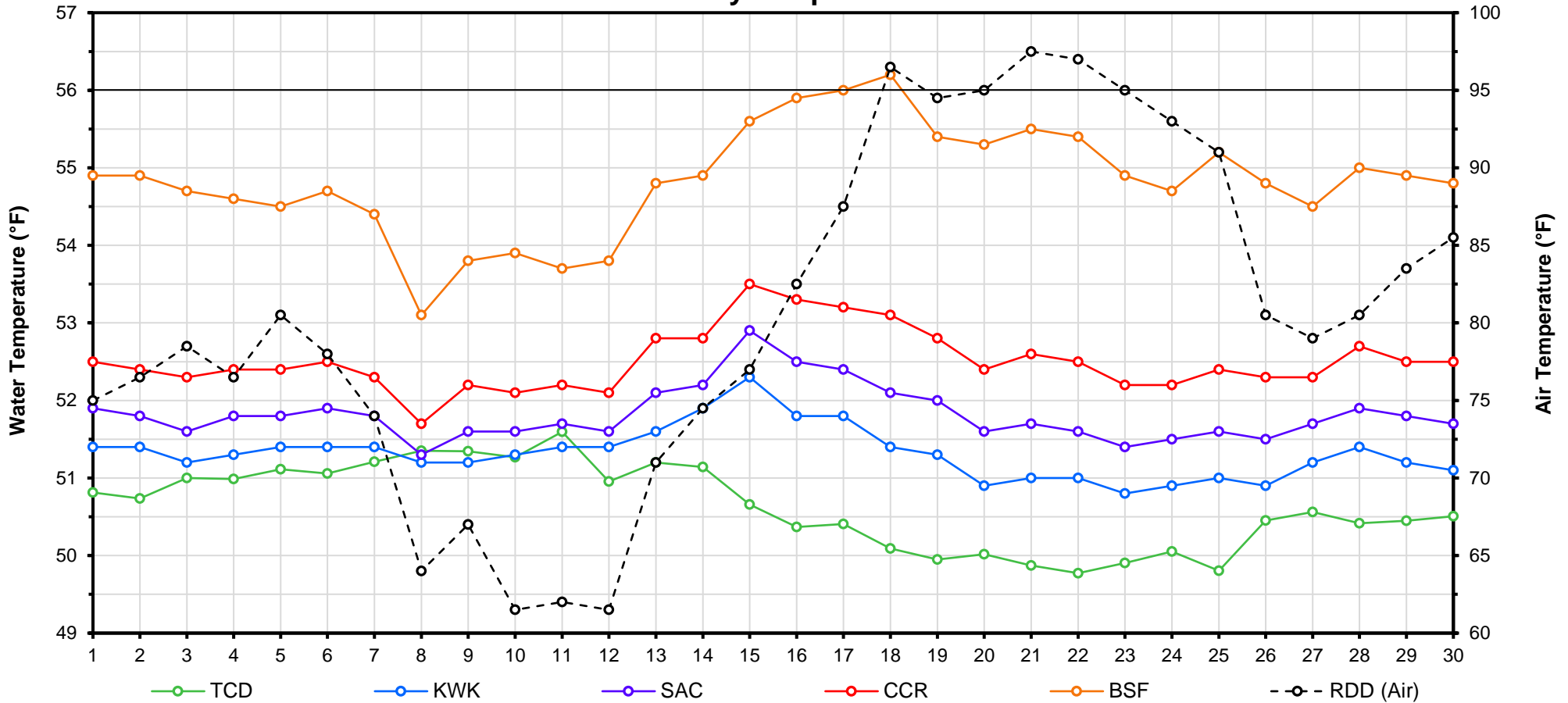
Web Links

- [10-Day Min/Max Forecast](#)
- [Previous Days Min/Max Actuals](#)

Legend

- NR = Forecasted temperatures not recorded
- 100** = Previous day actual temperatures in red and bolded indicate a record temperature for that date

Mean Daily Temperatures



Station Details			
Code	Body of Water	Location ¹	CDEC Link
TCD	N/A	Shasta Power Plant	N/A
SHD	Sacramento River	0.3 miles downstream of Shasta Power Plant	Click Here
SPP	N/A	Spring Creek Power Plant	N/A
KWK	Sacramento River	0.8 miles downstream of Keswick Dam	Click Here
SAC	Sacramento River	4.8 miles downstream of Keswick Dam	Click Here
CCR	Sacramento River	9.7 miles downstream of Keswick Dam	Click Here
BSF	Sacramento River	25 miles downstream of Keswick Dam	Click Here
JLF	Sacramento River	34 miles downstream of Keswick Dam	Click Here
BND	Sacramento River	41 miles downstream of Keswick Dam	Click Here
RDB	Sacramento River	58 miles downstream of Keswick Dam	Click Here
IGO	Clear Creek	7.3 miles downstream of Whiskeytown Dam	Click Here
LWS	Trinity River	1.1 miles downstream of Lewiston Dam	Click Here
DGC ²	Trinity River	19 miles downstream of Lewiston Dam	Click Here
NFH ³	Trinity River	38 miles downstream of Lewiston Dam	Click Here

Temperature Control Point		
Point	Temp. (°F)	Date Range
BSF	56.0	06/01/17 - Current

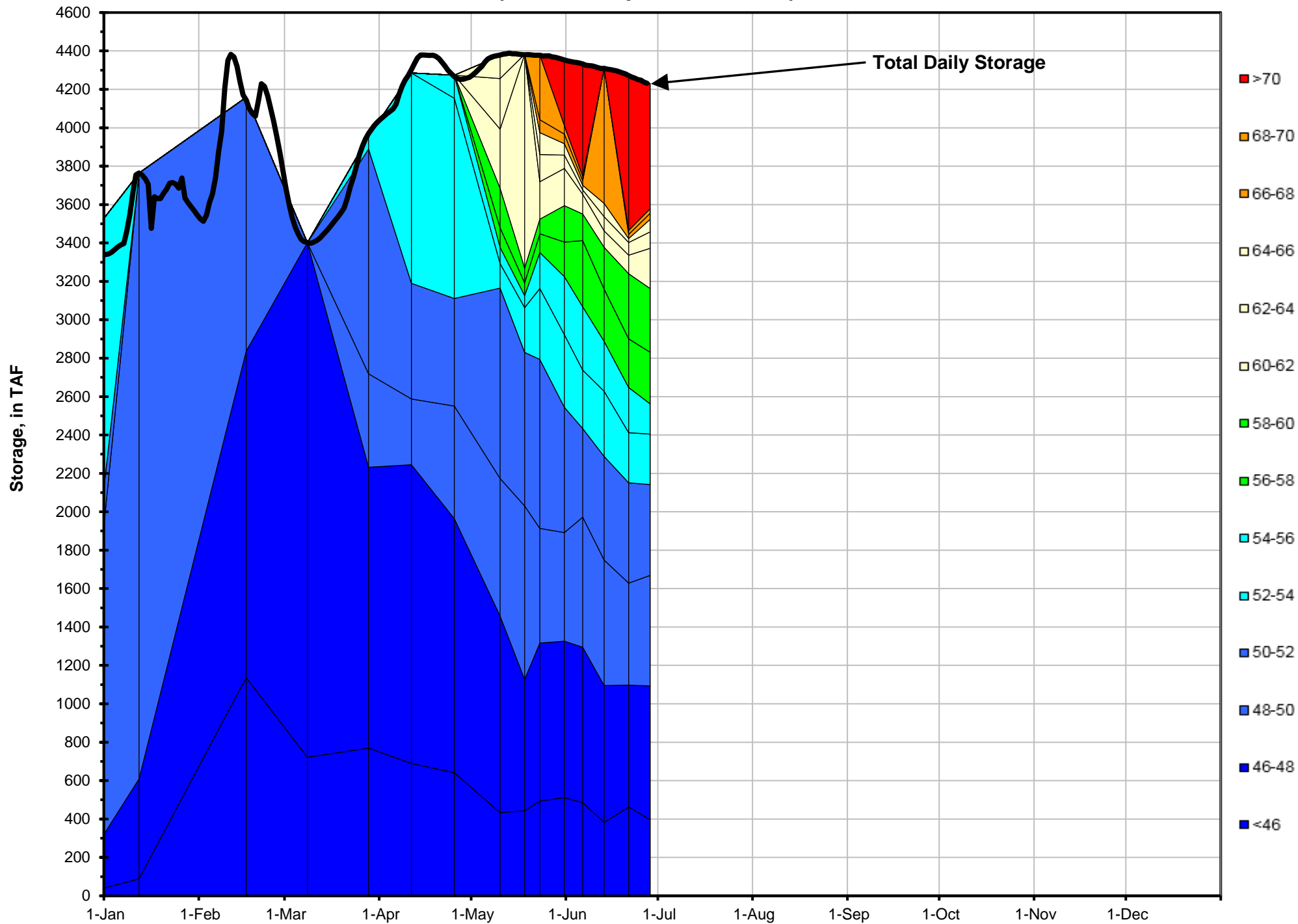
Notes

¹ Distances are approximate

² DGC is only reported in September

³ NFH is only reported in October, November and December

Lake Shasta Isothermalbaths - 2017 (Water Temperature, in °F)



DATE	Daily Max		7DADM ¹		DAT ²
	SAC	CCR	SAC	CCR	BSF
06/01	53.0	54.1	52.6	53.7	54.9
06/02	53.0	54.1	52.7	53.7	54.9
06/03	52.5	53.7	52.7	53.7	54.7
06/04	52.8	53.9	52.7	53.7	54.6
06/05	52.9	53.8	52.7	53.7	54.5
06/06	53.0	54.0	52.8	53.9	54.7
06/07	52.7	53.6	52.8	53.9	54.4
06/08	51.5	52.1	52.6	53.6	53.1
06/09	52.9	54.0	52.6	53.6	53.8
06/10	52.7	53.7	52.6	53.6	53.9
06/11	52.8	53.9	52.6	53.6	53.7
06/12	52.5	53.4	52.6	53.5	53.8
06/13	52.9	54.2	52.6	53.6	54.8
06/14	53.1	54.3	52.6	53.7	54.9
06/15	54.1	55.1	53.0	54.1	55.6
06/16	53.8	55.0	53.1	54.2	55.9
06/17	53.8	55.0	53.3	54.4	56.0
06/18	53.3	54.8	53.4	54.5	56.2
06/19	53.1	54.4	53.4	54.7	55.4
06/20	52.7	53.9	53.4	54.6	55.3
06/21	53.1	54.4	53.4	54.7	55.5
06/22	53.0	54.2	53.3	54.5	55.4
06/23	52.6	53.9	53.1	54.4	54.9
06/24	52.7	53.8	52.9	54.2	54.7
06/25	52.8	54.1	52.9	54.1	55.2
06/26	52.5	53.9	52.8	54.0	54.8
06/27	53.0	54.1	52.8	54.1	54.5
06/28	53.0	54.1	52.8	54.0	55.0
06/29	52.8	54.0	52.8	54.0	54.9
06/30	52.9	54.2	52.8	54.0	54.8
-					

Notes

¹ 7DADM = 7-Day Average
Daily Maximum

² DAT = Daily Average
Temperature

