

# Northern CVP Water Temperature Report

## June - 2016

Page	Description
1	- Mean Daily Water Temperature, Release Flow Rates and Air Temperatures with Monthly Averages
2	- Redding 10-Day Forecasted Air Temperatures
3	- Sacramento River Mean Daily Water Temperature, Air Temperature and 10-Day Forecasted Air Temperature Plot - Water Temperature Measuring Station Details - Temperature Control Point Details
4	- Lake Shasta Isothermalbaths Plot
5	- Daily Maximum and 7DADM
x	- <a href="#">TCD Configuration</a> (External Link)



All Data in this Report is Preliminary and Subject to Change

DATE	Mean Daily Water Temperatures (°F)													Mean Daily Release (CFS)			Mean Daily Air Temperatures (°F)			
	TCD <sup>1</sup>	SHD	SPP <sup>1</sup>	KWK	SAC	CCR	BSF <sup>2</sup>	JLF	BND	RDB	IGO	LWS	----- <sup>3</sup>	Shasta Generation	Spring Creek P.P.	Keswick Total	RDD	BSF	RDB	LWS
May	51.8	50.6	53.1	52.7	53.4	54.1	56.3	58.2	58.9	60.3	53.7	47.0	-	5839	51	6027	70.1	67.1	68.5	59.6
06/01	51.3	50.3	52.3	52.5	53.4	54.3	57.4	59.5	60.7	62.8	55.8	48.0	-	6889	14	7092	81.5	78.1	80.4	70.1
06/02	51.8	50.4	51.6	52.4	53.2	54.1	56.8	58.7	59.8	61.9	55.4	48.2	-	7259	353	7528	81.0	78.8	79.0	67.0
06/03	51.0	50.1	52.0	52.5	53.3	54.1	56.6	58.5	59.4	61.4	55.8	48.2	-	7288	94	7576	↑ 86.0	80.2	81.5	70.3
06/04	50.9	49.8	51.7	52.2	52.9	53.7	56.1	58.1	59.0	60.9	55.1	48.1	-	6875	280	7614	82.0	77.1	78.3	68.5
06/05	50.3	49.5	52.0	51.5	52.3	53.2	55.8	57.7	58.6	60.4	55.9	47.9	-	7503	91	7644	↑ 88.5	85.2	83.0	80.6
06/06	50.2	49.5	52.6	51.4	52.3	53.3	56.1	58.2	59.1	61.1	56.1	48.1	-	7299	14	7644	↑ 89.0	85.5	84.3	78.8
06/07	50.2	49.5	52.6	51.2	52.1	53.1	56.0	58.3	59.3	61.7	55.0	48.4	-	7479	14	7627	84.5	79.9	79.3	75.7
06/08	50.4	49.4	52.5	51.2	51.9	52.7	55.2	57.4	58.4	60.8	54.1	48.6	-	7615	14	7621	77.0	74.3	73.8	69.1
06/09	50.4	49.5	52.5	51.1	51.9	52.7	55.2	56.9	57.6	59.6	54.0	48.7	-	7472	14	7618	75.0	71.9	72.0	65.8
06/10	50.5	49.5	52.5	51.5	52.2	52.9	55.3	57.0	57.8	59.8	54.2	48.6	-	7986	14	7618	76.0	71.5	70.7	63.1
06/11	50.2	49.4	52.5	51.3	52.1	52.9	55.2	56.8	57.5	59.4	54.5	49.2	-	7633	14	7618	77.0	75.6	76.8	62.5
06/12	50.5	49.4	52.6	51.1	51.9	52.8	55.2	56.9	57.6	59.6	55.7	48.7	-	7369	14	7617	82.5	81.1	81.8	65.5
06/13	50.2	49.4	52.6	51.0	51.8	52.6	55.2	57.0	57.8	60.0	56.3	48.2	-	7145	14	7628	75.5	72.3	72.5	64.5
06/14	50.9	49.7	52.6	51.2	51.8	52.5	54.6	56.0	56.7	58.7	55.9	48.7	-	7564	14	7669	68.0	66.7	68.5	58.1
06/15	51.8	50.2	52.6	51.0	51.2	51.7	53.4	54.7	55.5	57.1	54.4	48.7	-	7299	14	7644	60.5	58.3	60.6	54.9
06/16	51.0	49.9	52.6	51.3	51.6	52.1	53.9	54.9	55.4	56.5	54.5	48.4	-	7648	14	7642	63.5	61.7	62.3	54.3
06/17	51.2	50.1	52.5	51.3	51.7	52.2	53.9	55.1	55.8	57.3	53.9	48.5	-	7501	14	7641	74.5	61.3	62.5	55.3
06/18	51.3	50.1	52.3	51.2	51.8	52.4	54.9	55.9	56.1	57.3	55.9	48.1	-	8269	69	8395	66.5	64.5	65.7	59.1
06/19	51.3	50.0	52.1	51.8	52.4	52.9	55.2	56.6	57.2	58.9	56.2	!	-	8341	382	8779	74.5	69.3	71.3	-
06/20	51.3	50.1	52.4	51.9	52.6	53.2	55.5	56.9	57.5	59.3	56.2	?	48.5	8357	101	8775	77.0	72.8	74.4	66.9
06/21	51.0	49.9	53.1	52.1	52.7	53.4	55.8	57.2	57.8	59.7	54.2	49.0	-	8510	14	8777	81.0	77.5	78.8	70.2
06/22	50.3	49.6	52.4	51.9	52.7	53.4	56.0	57.5	58.1	60.0	53.8	49.3	-	7536	841	8790	81.0	77.6	77.9	69.7
06/23	50.4	49.6	52.5	51.6	52.4	53.2	55.7	57.2	57.9	60.0	53.4	49.6	-	7810	476	8793	76.0	74.9	77.4	67.8
06/24	50.4	49.6	52.4	51.6	52.2	52.9	55.2	56.6	57.3	59.5	53.5	49.5	-	8313	412	8787	78.0	75.0	77.3	67.2
06/25	50.4	49.5	52.6	51.7	52.4	53.1	55.4	56.8	57.4	59.4	54.4	49.5	-	8238	443	8789	85.0	79.8	80.6	68.7
06/26	49.7	49.1	52.6	51.7	52.3	53.0	55.4	57.0	57.7	59.6	55.1	49.1	-	7694	678	8788	83.0	80.7	79.9	71.2
06/27	49.8	49.2	52.7	51.4	52.4	53.2	55.8	57.3	58.0	60.0	55.8	49.3	-	7575	842	8692	86.0	82.8	85.5	71.7
06/28	49.7	49.1	52.7	51.0	51.8	52.6	55.2	56.9	57.7	60.2	56.0	49.5	-	7800	643	8692	85.0	82.5	84.2	73.0
06/29	49.7	49.1	52.8	51.1	51.9	52.6	55.2	56.9	57.7	59.9	57.4	49.6	-	7311	845	8689	88.5	84.1	84.1	75.4
06/30	49.7	49.1	52.9	51.1	51.9	52.7	55.3	57.1	57.9	60.2	58.2	49.6	-	7621	841	8690	90.0	85.3	85.5	75.6
-																				
Jun	50.6	49.7	52.5	51.5	52.2	53.0	55.4	57.1	57.8	59.8	55.2	48.8	-	7640	253	8083	79.1	75.5	76.3	67.6

Total CFS	229199	7587	242477
Total AF	454607	15049	480943

**Legend**

- ? = 1-9 hours of data missing (Average includes estimations)
- ! = 10 or more hours of data missing (Average not calculated)
- # = Station out of service
- ↑ = Record high air temperature
- ↓ = Record low air temperature
- ☐ = Monthly Averages

**Notes**

- <sup>1</sup> Temperatures are weighted averages based on individual penstock flow and temperature
- Highlighted cells in the TCD column indicate a TCD change was made on that day
- <sup>2</sup> Current control point (see page 3 for more details)
- <sup>3</sup> Column not used this month

D A T E	Redding (RDD) Daily Air Temperatures (°F)																																				
	Actual			Forecasted																																	
	Previous Day			Current Day			1 Day			2 Days			3 Days			4 Days			5 Days			6 Days			7 Days			8 Days			9 Days			10 Days			
	↓	↑	Avg	↓	↑	Avg	↓	↑	Avg	↓	↑	Avg	↓	↑	Avg	↓	↑	Avg	↓	↑	Avg	↓	↑	Avg	↓	↑	Avg	↓	↑	Avg	↓	↑	Avg	↓	↑	Avg	
06/01	58	<b>103</b>	80.5	64	102	83.0	62	100	81.0	65	103	84.0	69	106	87.5	69	101	85.0	66	96	81.0	65	93	79.0	60	93	76.5	61	95	78.0	62	93	77.5	65	95	80.0	
06/02	64	99	81.5	64	97	80.5	61	102	81.5	66	102	84.0	68	101	84.5	67	100	83.5	67	96	81.5	65	94	79.5	66	97	81.5	64	95	79.5	64	95	79.5	63	94	78.5	
06/03	63	99	81.0	68	102	85.0	66	102	84.0	69	101	85.0	69	103	86.0	69	100	84.5	65	94	79.5	63	95	79.0	59	88	73.5	60	92	76.0	62	93	77.5	63	94	78.5	
06/04	67	<b>105</b>	86.0	68	100	84.0	70	101	85.5	70	103	86.5	69	97	83.0	62	90	76.0	60	87	73.5	58	84	71.0	58	95	76.5	62	96	79.0	63	94	78.5	63	94	78.5	
06/05	66	98	82.0	75	98	86.5	70	101	85.5	69	94	81.5	62	91	76.5	59	88	73.5	58	83	70.5	57	85	71.0	59	93	76.0	60	95	77.5	61	93	77.0	60	90	75.0	
06/06	74	<b>103</b>	88.5	73	103	88.0	68	97	82.5	63	92	77.5	60	88	74.0	59	81	70.0	57	83	70.0	58	90	74.0	60	91	75.5	62	88	75.0	60	89	74.5	59	89	74.0	
06/07	72	<b>106</b>	89.0	74	97	85.5	62	91	76.5	60	88	74.0	60	84	72.0	57	85	71.0	58	91	74.5	60	96	78.0	61	87	74.0	58	86	72.0	58	88	73.0	58	86	72.0	
06/08	73	96	84.5	68	89	78.5	60	88	74.0	59	83	71.0	56	82	69.0	58	92	75.0	60	94	77.0	59	86	72.5	57	81	69.0	55	81	68.0	56	89	72.5	58	87	72.5	
06/09	67	87	77.0	64	87	75.5	59	84	71.5	57	86	71.5	57	95	76.0	59	93	76.0	60	85	72.5	57	81	69.0	55	86	70.5	57	90	73.5	62	94	78.0	61	95	78.0	
06/10	63	87	75.0	67	83	75.0	57	85	71.0	59	91	75.0	60	92	76.0	60	83	71.5	57	80	68.5	55	78	66.5	57	81	69.0	56	92	74.0	59	91	75.0	60	94	77.0	
06/11	67	85	76.0	64	88	76.0	62	93	77.5	60	91	75.5	56	83	69.5	56	78	67.0	55	75	65.0	55	79	67.0	52	87	69.5	57	90	73.5	62	95	78.5	62	97	79.5	
06/12	64	90	77.0	73	95	84.0	61	90	75.5	58	80	69.0	57	74	65.5	55	76	65.5	55	80	67.5	56	86	71.0	58	95	76.5	63	94	78.5	65	95	80.0	63	96	79.5	
06/13	69	96	82.5	62	89	62.0	58	78	68.0	57	74	65.5	54	73	63.5	55	80	67.5	57	88	72.5	59	93	76.0	64	100	82.0	65	94	79.5	64	94	79.0	63	91	77.0	
06/14	62	89	75.5	57	78	67.5	58	70	64.0	53	71	62.0	54	78	66.0	58	87	72.5	60	94	77.0	63	100	81.5	62	100	81.0	65	100	82.5	65	97	81.0	65	95	80.0	
06/15	57	79	68.0	59	71	65.0	53	68	60.5	54	76	65.0	56	84	70.0	58	92	75.0	62	100	81.0	65	102	83.5	64	102	83.0	65	99	82.0	64	94	79.0	63	93	78.0	
06/16	53	68	60.5	53	70	61.5	55	74	64.5	57	83	70.0	58	92	75.0	62	100	81.0	64	102	83.0	65	103	84.0	66	102	84.0	65	99	82.0	66	96	81.0	63	95	79.0	
06/17	53	74	63.5	58	75	66.5	58	81	69.5	58	93	75.5	61	98	79.5	63	99	81.0	65	100	82.5	67	97	82.0	60	89	74.5	60	95	77.5	65	97	81.0	64	96	80.0	
06/18	57	70	63.5	56	79	67.5	57	91	74.0	60	94	77.0	63	97	80.0	64	97	80.5	65	97	81.0	64	94	79.0	58	92	75.0	63	96	79.5	65	98	81.5	65	98	81.5	
06/19	54	79	66.5	62	90	76.0	60	93	76.5	63	96	79.5	64	99	81.5	64	99	81.5	66	100	83.0	64	95	79.5	63	99	81.0	67	100	83.5	67	100	83.5	66	97	81.5	
06/20	59	90	74.5	60	94	77.0	64	98	81.0	65	98	81.5	63	93	78.0	64	97	80.5	64	100	82.0	65	99	82.0	65	100	82.5	67	102	84.5	68	98	83.0	66	97	81.5	
06/21	59	95	77.0	64	99	81.5	63	98	80.5	62	92	77.0	62	93	77.5	64	101	82.5	65	100	82.5	66	102	84.0	66	102	84.0	68	100	84.0	67	98	82.5	63	91	77.0	
06/22	63	99	81.0	66	97	81.5	61	91	76.0	61	91	76.0	62	99	80.5	64	102	83.0	66	103	84.5	67	103	85.0	68	103	85.5	68	100	84.0	65	98	81.5	65	98	81.5	
06/23	65	97	81.0	60	91	75.5	61	92	76.5	63	100	81.5	64	102	83.0	65	101	83.0	66	104	85.0	68	103	85.5	68	98	83.0	65	96	80.5	64	96	80.0	63	96	79.5	
06/24	59	93	76.0	62	93	77.5	63	100	81.5	64	102	83.0	65	102	83.5	66	104	85.0	67	105	86.0	69	100	84.5	66	97	81.5	64	95	79.5	64	96	80.0	65	96	80.5	
06/25	62	94	78.0	69	100	84.5	64	103	83.5	66	104	85.0	67	103	85.0	67	106	86.5	68	104	86.0	66	100	83.0	64	99	81.5	65	98	81.5	66	99	82.5	66	97	81.5	
06/26	69	101	85.0	64	102	83.0	66	103	84.5	68	104	86.0	69	104	86.5	68	104	86.0	65	98	81.5	64	96	80.0	64	99	81.5	65	99	82.0	67	99	83.0	64	98	81.0	
06/27	63	103	83.0	66	105	85.5	66	105	85.5	69	105	87.0	68	103	85.5	66	101	83.5	65	97	81.0	64	97	80.5	66	96	81.0	65	95	80.0	65	96	80.5	64	96	80.0	
06/28	66	106	86.0	65	105	85.0	69	106	87.5	70	105	87.5	70	104	87.0	64	99	81.5	64	96	80.0	63	97	80.0	64	98	81.0	64	97	80.5	64	95	79.5	63	95	79.0	
06/29	65	105	85.0	74	105	89.5	71	105	88.0	69	105	87.0	66	99	82.5	64	98	81.0	63	98	80.5	63	98	80.5	65	98	81.5	65	97	81.0	64	100	82.0	65	98	81.5	
06/30	71	106	88.5	73	106	89.5	70	106	88.0	66	101	83.5	65	100	82.5	64	98	81.0	64	97	80.5	64	95	79.5	62	94	78.0	62	97	79.5	67	101	84.0	68	100	84.0	
-																																					

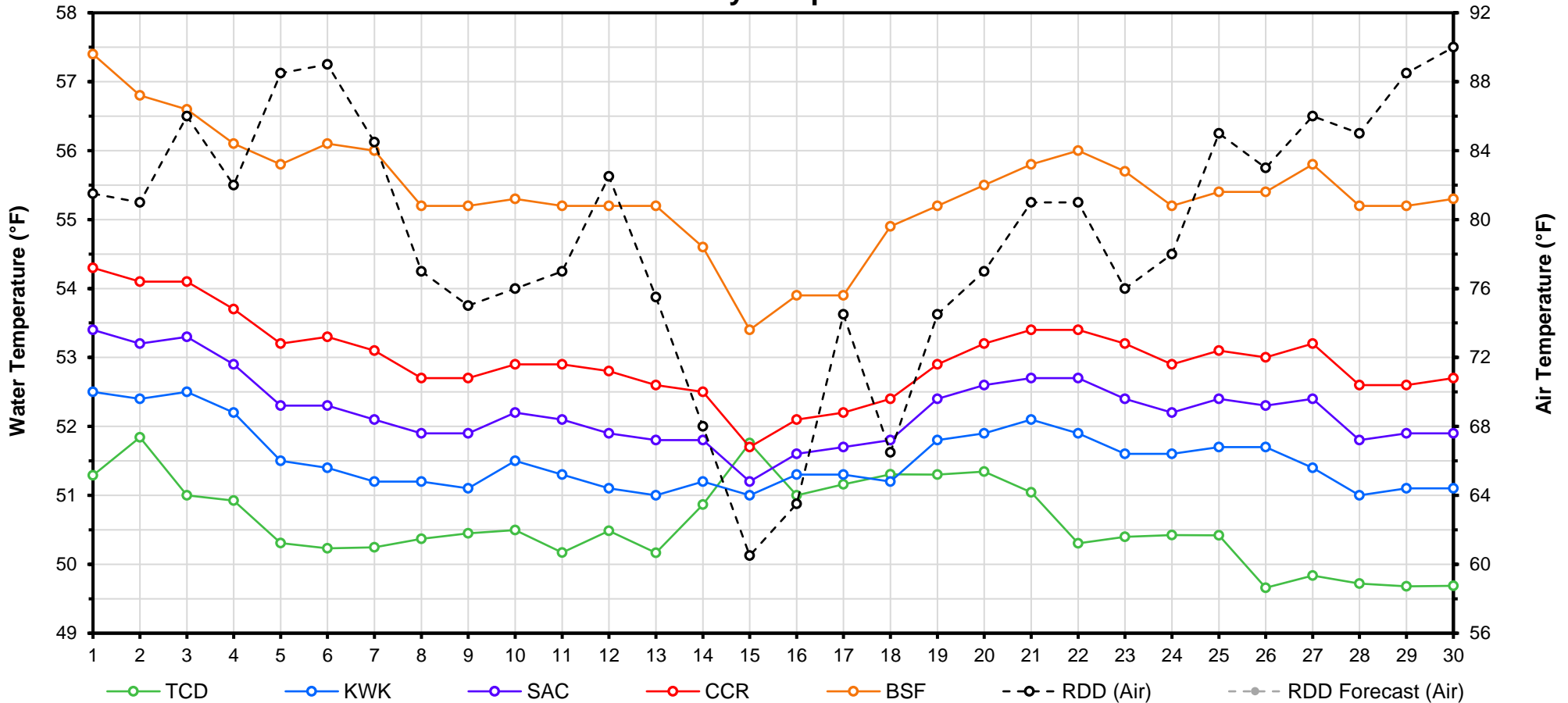
[Web Links](#)

[Legend](#)

[10-Day Min/Max Forecast](#)  
[Previous Days Min/Max Actuals](#)

NR = Forecasted temperatures not recorded  
**100** = Previous day actual temperatures in red and bolded indicate a record temperature for that date

# Mean Daily Temperatures



Station Details			
Code	Body of Water	Location <sup>1</sup>	CDEC Link
TCD	N/A	Shasta Power Plant	N/A
SHD	Sacramento River	0.3 miles downstream of Shasta Power Plant	<a href="#">Click Here</a>
SPP	N/A	Spring Creek Power Plant	N/A
KWK	Sacramento River	0.8 miles downstream of Keswick Dam	<a href="#">Click Here</a>
SAC	Sacramento River	4.8 miles downstream of Keswick Dam	<a href="#">Click Here</a>
CCR	Sacramento River	9.7 miles downstream of Keswick Dam	<a href="#">Click Here</a>
BSF	Sacramento River	25 miles downstream of Keswick Dam	<a href="#">Click Here</a>
JLF	Sacramento River	34 miles downstream of Keswick Dam	<a href="#">Click Here</a>
BND	Sacramento River	41 miles downstream of Keswick Dam	<a href="#">Click Here</a>
RDB	Sacramento River	58 miles downstream of Keswick Dam	<a href="#">Click Here</a>
IGO	Clear Creek	7.3 miles downstream of Whiskeytown Dam	<a href="#">Click Here</a>
LWS	Trinity River	1.1 miles downstream of Lewiston Dam	<a href="#">Click Here</a>
DGC <sup>2</sup>	Trinity River	19 miles downstream of Lewiston Dam	<a href="#">Click Here</a>
NFH <sup>3</sup>	Trinity River	38 miles downstream of Lewiston Dam	<a href="#">Click Here</a>

Temperature Control Point		
Point	Temp. (°F)	Date Range
<b>BSF</b>	<b>56.0</b>	<b>6/17 - 6/30</b>

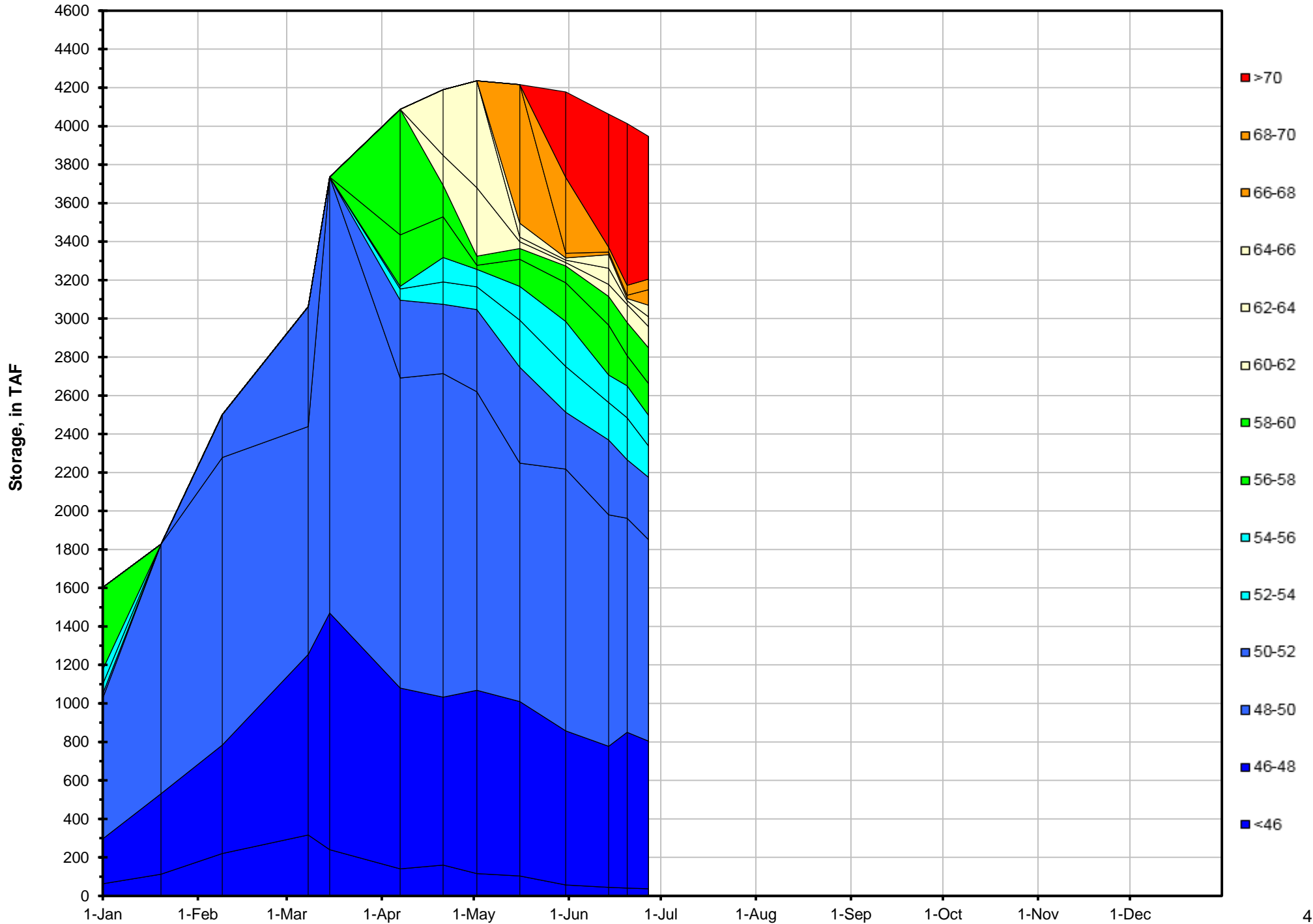
## Notes

<sup>1</sup> Distances are approximate

<sup>2</sup> DGC is only reported in September

<sup>3</sup> NFH is only reported in October, November and December

# Lake Shasta Isothermalbaths - 2016 (Water Temperature, in °F)



DATE	Daily Max		7DADM <sup>1</sup>		DAT <sup>2</sup>
	SAC	CCR	SAC	CCR	BSF
06/01	55.0	56.8	55.2	56.9	57.4
06/02	54.6	56.2	55.1	56.8	56.8
06/03	54.9	56.3	55.1	56.8	56.6
06/04	54.1	55.0	55.0	56.5	56.1
06/05	53.5	54.9	54.7	56.3	55.8
06/06	53.7	55.3	54.5	56.0	56.1
06/07	53.7	55.3	54.2	55.7	56.0
06/08	53.0	54.1	53.9	55.3	55.2
06/09	53.4	54.9	53.8	55.1	55.2
06/10	53.6	55.1	53.6	54.9	55.3
06/11	53.6	55.2	53.5	55.0	55.2
06/12	53.6	55.3	53.5	55.0	55.2
06/13	53.2	54.9	53.4	55.0	55.2
06/14	53.2	54.5	53.4	54.9	54.6
06/15	52.3	52.8	53.3	54.7	53.4
06/16	52.8	53.7	53.2	54.5	53.9
06/17	52.4	52.6	53.0	54.1	53.9
06/18	53.0	54.1	52.9	54.0	54.9
06/19	53.6	54.8	52.9	53.9	55.2
06/20	53.7	54.8	53.0	53.9	55.5
06/21	54.2	55.2	53.1	54.0	55.8
06/22	53.9	55.1	53.4	54.3	56.0
06/23	53.6	55.0	53.5	54.5	55.7
06/24	53.8	55.0	53.7	54.9	55.2
06/25	54.2	55.5	53.9	55.1	55.4
06/26	53.9	55.0	53.9	55.1	55.4
06/27	53.8	55.1	53.9	55.1	55.8
06/28	53.4	54.7	53.8	55.1	55.2
06/29	53.4	54.8	53.7	55.0	55.2
06/30	53.7	55.0	53.7	55.0	55.3
-					

**Notes**

<sup>1</sup> 7DADM = 7-Day Average Daily Maximum

<sup>2</sup> DAT = Daily Average Temperature

