

Northern CVP Water Temperature Report

May - 2026

| Page | Description |
|------|---|
| 2 | - Mean Daily Water Temperature, Release Flow Rates and Air Temperatures with Monthly Averages |
| 3 | - Sacramento River Mean Daily Water Temperature Plot |
| 4 | - Trinity River Mean Daily Water Temperature Plot |
| 5 | - Shasta Lake Isothermobaths & Cold Water Pool Statistics |
| 14 | - Trinity Lake Isothermobaths & Cold Water Pool Statistics |
| 23 | - Whiskeytown Lake Isothermobaths & Cold Water Pool Statistics |
| x | - TCD Configuration (External Link) |



— BUREAU OF —
RECLAMATION

All Data in this Report is Preliminary and Subject to Change

| DATE | Mean Daily Water Temperatures (°F) | | | | | | | | | | | | | Mean Daily Release (CFS) | | | Mean Daily Air Temperatures (°F) | | | |
|-------|------------------------------------|------|------------------|------|------|------------------|--------|------|------|------|------|------|------|--------------------------|-------------------|---------------|----------------------------------|------|------|--|
| | TCD ¹ | SHD | SPP ¹ | KWK | SAC | CCR ² | BSF | BND | RDB | IGO | LWS | DGC | NFH | Shasta Generation | Spring Creek P.P. | Keswick Total | RDD | BSF | RDB | |
| Apr | 54.8 | 53.8 | 52.2 | 54.6 | 55.0 | 55.7 | 56.8 | 57.4 | 58.5 | 52.1 | 49.0 | 50.9 | 52.0 | 5703 | 653 | 6277 | 59.4 | 57.4 | 58.6 | |
| 05/01 | 54.3 | 53.6 | 53.1 | 55.7 | 56.2 | 57.2 | 59.3 | 61.0 | 62.5 | 53.9 | 48.8 | 51.3 | 53.5 | 4579 | 810 | 5982 | 68.0 | 67.2 | 68.3 | |
| 05/02 | 54.6 | 53.2 | 53.3 | 55.2 | 56.0 | 57.1 | 59.5 | 61.2 | 62.8 | 54.4 | 48.7 | 51.7 | 54.0 | 4392 | 1118 | 5974 | 70.0 | 67.3 | 67.6 | |
| 05/03 | 54.7 | 53.3 | 53.3 | 54.9 | 55.4 | 56.1 | 58.1 | 60.1 | 62.0 | 53.5 | 48.6 | 51.1 | 53.4 | 4535 | 1292 | 5951 | 63.5 | 59.8 | 59.5 | |
| 05/04 | 54.3 | 53.5 | 53.5 | 54.7 | 55.0 | 55.6 | 57.4 | 58.7 | 59.8 | 53.0 | 48.8 | 51.7 | 53.6 | 4717 | 1407 | 6028 | 60.0 | 58.1 | 57.4 | |
| 05/05 | 54.5 | 53.2 | 53.6 | 54.2 | 54.7 | 55.3 | 56.9 | 57.9 | 59.3 | 53.2 | 49.1 | 52.7 | 55.1 | 5187 | 1900 | 6973 | 61.0 | 59.4 | 59.5 | |
| 05/06 | 55.0 | 54.1 | 53.6 | 54.0 | 54.7 | 55.7 | 57.4 | 58.5 | 59.7 | 54.6 | 49.4 | 53.2 | 56.1 | 5226 | 2017 | 7039 | 68.5 | 66.3 | 66.0 | |
| 05/07 | 55.6 | 54.1 | 53.6 | 54.7 | 55.1 | 56.1 | 58.0 | 59.5 | 60.9 | 54.9 | 49.9 | 53.6 | 56.2 | 6105 | 856 | 7445 | 70.0 | 67.1 | 66.7 | |
| 05/08 | 56.5 ? | 54.7 | 53.2 | 55.6 | 56.0 | 57.1 | 59.2 | 60.8 | 62.2 | 55.4 | 49.7 | 53.9 | 56.6 | 6858 | 194 | 7254 | 73.5 | 72.0 | 71.5 | |
| 05/09 | 56.6 | 55.2 | 53.5 | 56.4 | 56.7 | 57.7 | 59.8 | 61.5 | 63.1 | 55.4 | 49.8 | 53.6 | 56.5 | 7711 | 891 | 7899 | 77.0 | 73.6 | 74.3 | |
| 05/10 | 55.2 ? | 54.3 | 53.7 | 56.6 | 57.1 | 58.2 | 60.3 | 62.0 | 63.7 | 55.5 | 49.6 | 53.9 | 57.2 | 6188 | 904 | 7694 | 74.0 | 72.1 | 70.8 | |
| 05/11 | 54.1 | 52.8 | 53.7 | 56.4 | 57.1 | 58.3 | 60.7 | 62.6 | 64.3 | 55.9 | 49.9 | 54.3 | 57.5 | 7698 | 1038 | 7939 | 78.5 | 75.2 | 76.7 | |
| 05/12 | 53.8 | 52.5 | 54.0 | 54.8 | 55.8 | 56.7 | 59.5 ? | 61.9 | 64.1 | 55.9 | 50.1 | 54.9 | 58.3 | 6963 | 1259 | 8423 | 77.0 | 73.6 | 75.9 | |
| 05/13 | 53.9 | 52.3 | 54.4 | 54.4 | 55.1 | 55.8 | 58.1 | 60.2 | 62.2 | 55.1 | 50.2 | 54.4 | 57.6 | 5760 | 1192 | 8293 | 68.0 | 70.2 | 70.6 | |
| 05/14 | 53.6 ? | 52.5 | 54.1 | 54.2 | 54.8 | 55.5 | 57.6 | 59.3 | 61.0 | 55.2 | 50.6 | 54.2 | 56.9 | 4406 | 1155 | 8627 | 75.5 | 70.2 | 72.8 | |
| 05/15 | 52.2 | 51.0 | 54.0 | 54.0 | 54.8 | 55.5 | 57.6 | 59.0 | 60.6 | 55.1 | 50.2 | 54.0 | 56.7 | 8377 | 509 | 8595 | 75.5 | 70.5 | 72.7 | |
| 05/16 | 52.1 | 51.0 | 54.2 | 52.6 | 53.5 | 53.8 | 55.7 | 57.8 | 59.7 | 54.1 | 50.0 | 53.3 | 55.8 | 6025 | 830 | 8521 | 68.5 | 68.4 | 69.8 | |
| 05/17 | 52.6 ? | 51.2 | 54.3 | 52.0 | 52.8 | 53.1 | 54.8 | 56.0 | 57.4 | 54.3 | 50.3 | 53.2 | 55.4 | 6328 | 686 | 9090 | 66.5 | 65.6 | 65.9 | |
| 05/18 | 52.1 | 50.9 | 54.4 | 52.3 | 52.9 | 53.3 | 54.9 | 56.1 | 57.3 | 53.7 | 50.5 | 53.4 | 55.5 | 9865 | 1003 | 9900 | 71.0 | 66.0 | 69.4 | |
| 05/19 | 51.4 | 50.2 | 54.3 | 52.2 | 53.0 | 53.4 | 55.3 | 56.6 | 58.0 | 53.1 | 49.9 | 53.9 | 56.7 | 8995 | 711 | 10005 | 71.5 | 68.4 | 71.3 | |
| 05/20 | 50.7 | 49.9 | 54.1 | 51.7 | 52.7 | 53.2 | 55.3 | 56.8 | 58.5 | 53.4 | 49.8 | 54.4 | 57.6 | 8362 | 316 | 10009 | 74.5 | 71.2 | 72.4 | |
| 05/21 | 50.6 | 50.1 | 54.4 | 51.3 | 52.2 | 52.7 | 54.8 | 56.7 | 58.5 | 53.8 | 49.8 | 54.9 | 58.6 | 9630 | 796 | 9986 | 76.0 | 74.4 | 74.1 | |
| 05/22 | 50.6 | 50.0 | 54.3 | 51.6 | 52.4 | 53.0 | 55.1 | 56.9 | 58.8 | 54.3 | 49.8 | 55.0 | 58.9 | 9480 | 644 | 9994 | 79.0 | 75.0 | 75.2 | |
| 05/23 | 50.6 | 50.1 | 54.4 | 51.4 | 52.2 | 52.7 | 55.0 | 57.1 | 58.9 | 54.2 | 50.1 | 55.1 | 58.8 | 8943 | 493 | 10356 | 75.5 | 70.7 | 71.8 | |
| 05/24 | 50.7 | 50.6 | 54.7 | 51.5 | 52.2 | 52.8 | 54.8 | 56.6 | 58.5 | 54.3 | 50.2 | 55.3 | 58.9 | 8260 | 985 | 10251 | 74.5 | 71.5 | 71.6 | |
| 05/25 | 50.8 | 50.1 | 54.7 | 51.6 | 52.3 | 52.8 | 54.8 | 56.6 | 58.4 | 54.2 | 50.2 | 54.7 | 58.3 | 10423 | 778 | 10930 | 71.0 | 68.1 | 67.0 | |
| 05/26 | 51.1 | 50.0 | 55.1 | 51.4 | 52.0 | 52.2 | 54.0 | 55.7 | 57.4 | 53.6 | 50.5 | 53.7 | 57.1 | 10299 | 1170 | 10933 | 62.5 | 60.5 | 62.1 | |
| 05/27 | 51.1 | 50.1 | 54.9 | 51.0 | 51.4 | 51.4 | 52.5 | 53.5 | 55.0 | 53.5 | 50.3 | 52.6 | 55.2 | 9439 | 1220 | 10933 | 57.0 | 55.7 | 57.4 | |
| 05/28 | 51.1 | 50.0 | 54.9 | 51.0 | 51.6 | 51.9 | 53.5 | 54.1 | 54.9 | 55.9 | 49.7 | 54.4 | 56.5 | 10433 | 872 | 11006 | 65.5 | 61.8 | 63.5 | |
| 05/29 | 51.3 | 50.3 | 55.0 | 51.3 | 51.6 | 51.7 | 53.1 | 54.5 | 55.9 | 54.6 | 49.6 | 54.4 | 58.2 | 7514 | 1198 | 10999 | 60.5 | 60.5 | 61.3 | |
| 05/30 | 51.5 | 50.8 | 55.0 | 51.3 | 51.8 | 52.3 | 53.9 | 54.8 | 56.0 | 56.2 | 50.0 | 55.0 | 58.1 | 6728 | 1047 | 10767 | 69.0 | 67.8 | 68.0 | |
| 05/31 | 51.4 | 50.6 | 55.1 | 52.1 | 52.6 | 53.3 | 55.0 | 56.2 | 57.6 | 56.6 | 50.2 | 55.1 | 58.5 | 7562 | 1064 | 10634 | 74.0 | 70.8 | 71.6 | |
| May | 52.9 | 51.8 | 54.1 | 53.3 | 54.0 | 54.6 | 56.6 | 58.1 | 59.7 | 54.5 | 49.8 | 53.7 | 56.6 | 7314 | 976 | 8793 | 70.1 | 67.6 | 68.4 | |
| | | | | | | | | | | | | | | Total CFS | 226988 | 30355 | 274430 | | | |
| | | | | | | | | | | | | | | Total AF | 450221 | 60208 | 544321 | | | |

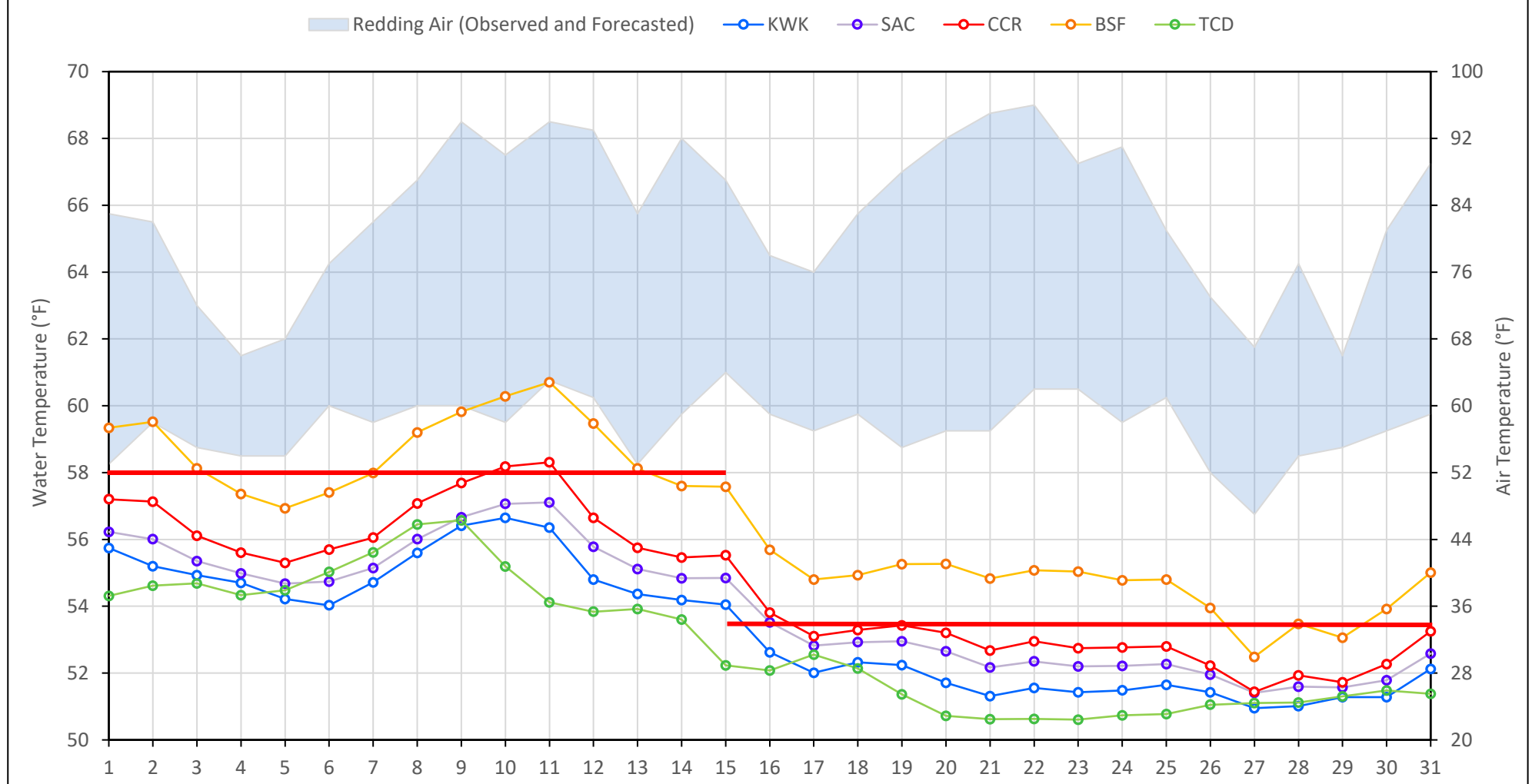
Legend

- ? = 1-9 hours of data missing (Average includes estimations)
- ! = 10 or more hours of data missing (Average not calculated)
- # = Station out of service
- ↑ = Record high air temperature
- ↓ = Record low air temperature
- ☐ = Monthly Averages

Notes

- ¹ Temperatures are weighted averages based on individual penstock flow and temperature
- Highlighted cells in the TCD column indicate a TCD change was made on that day
- ² Current Clear Creek River control point (see page 3 for more details)

Sacramento River Mean Daily Temperatures



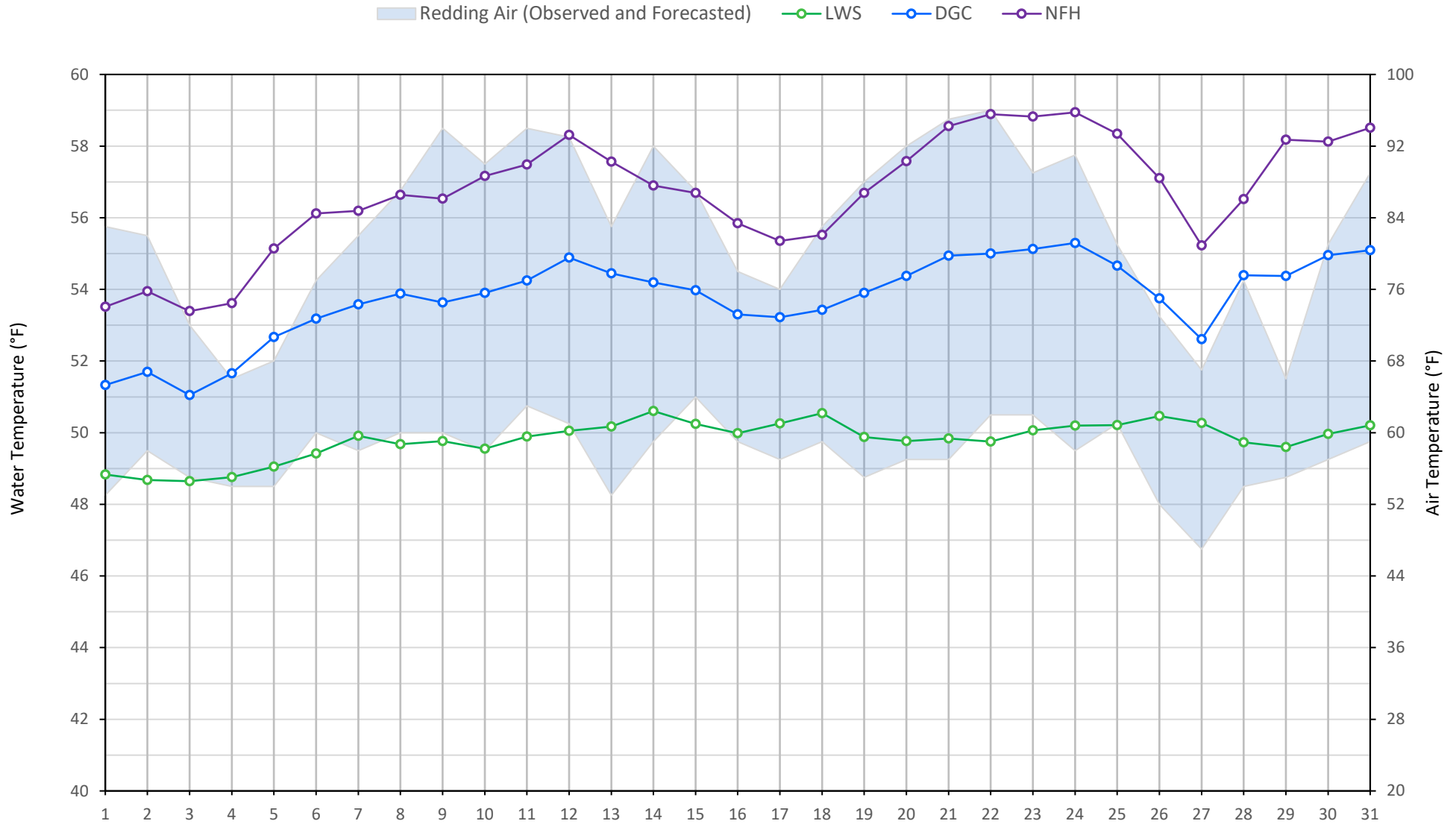
| Station Details | | | |
|-----------------|------------------|--|----------------------------|
| Code | Body of Water | Location ¹ | CDEC Link |
| TCD | N/A | Shasta Power Plant | N/A |
| SHD | Sacramento River | 0.3 miles downstream of Shasta Power Plant | Click Here |
| SPP | N/A | Spring Creek Power Plant | N/A |
| KWK | Sacramento River | 0.8 miles downstream of Keswick Dam | Click Here |
| SAC | Sacramento River | 4.8 miles downstream of Keswick Dam | Click Here |
| CCR | Sacramento River | 9.7 miles downstream of Keswick Dam | Click Here |
| BSF | Sacramento River | 25 miles downstream of Keswick Dam | Click Here |
| JLF | Sacramento River | 34 miles downstream of Keswick Dam | Click Here |
| BND | Sacramento River | 41 miles downstream of Keswick Dam | Click Here |
| RDB | Sacramento River | 58 miles downstream of Keswick Dam | Click Here |
| IGO | Clear Creek | 7.3 miles downstream of Whiskeytown Dam | Click Here |

| Water Right Temperature Control Points | | | | |
|--|-------|------------|------------|----------|
| River | Point | Temp. (°F) | Begin Date | End Date |
| Sacramento | CCR | 58.0 | Mar-01 | May-15 |
| Sacramento | CCR | 53.5 | May-15 | |
| | | | | |
| | | | | |
| | | | | |

Notes

¹ Distances are approximate

Trinity River Mean Daily Temperatures



| Station Details | | | |
|-----------------|---------------|--------------------------------------|----------------------------|
| Code | Body of Water | Location ¹ | CDEC Link |
| LWS | Trinity River | 1.1 miles downstream of Lewiston Dam | Click Here |
| DGC | Trinity River | 19 miles downstream of Lewiston Dam | Click Here |
| NFH | Trinity River | 38 miles downstream of Lewiston Dam | Click Here |

| Water Right Temperature Control Points | | | | |
|--|-------|------------|------------|----------|
| River | Point | Temp. (°F) | Begin Date | End Date |
| Trinity | DGC | 56 | Sep-15 | Oct-01 |
| Trinity | NFH | 56 | Oct-01 | Dec-31 |

Notes

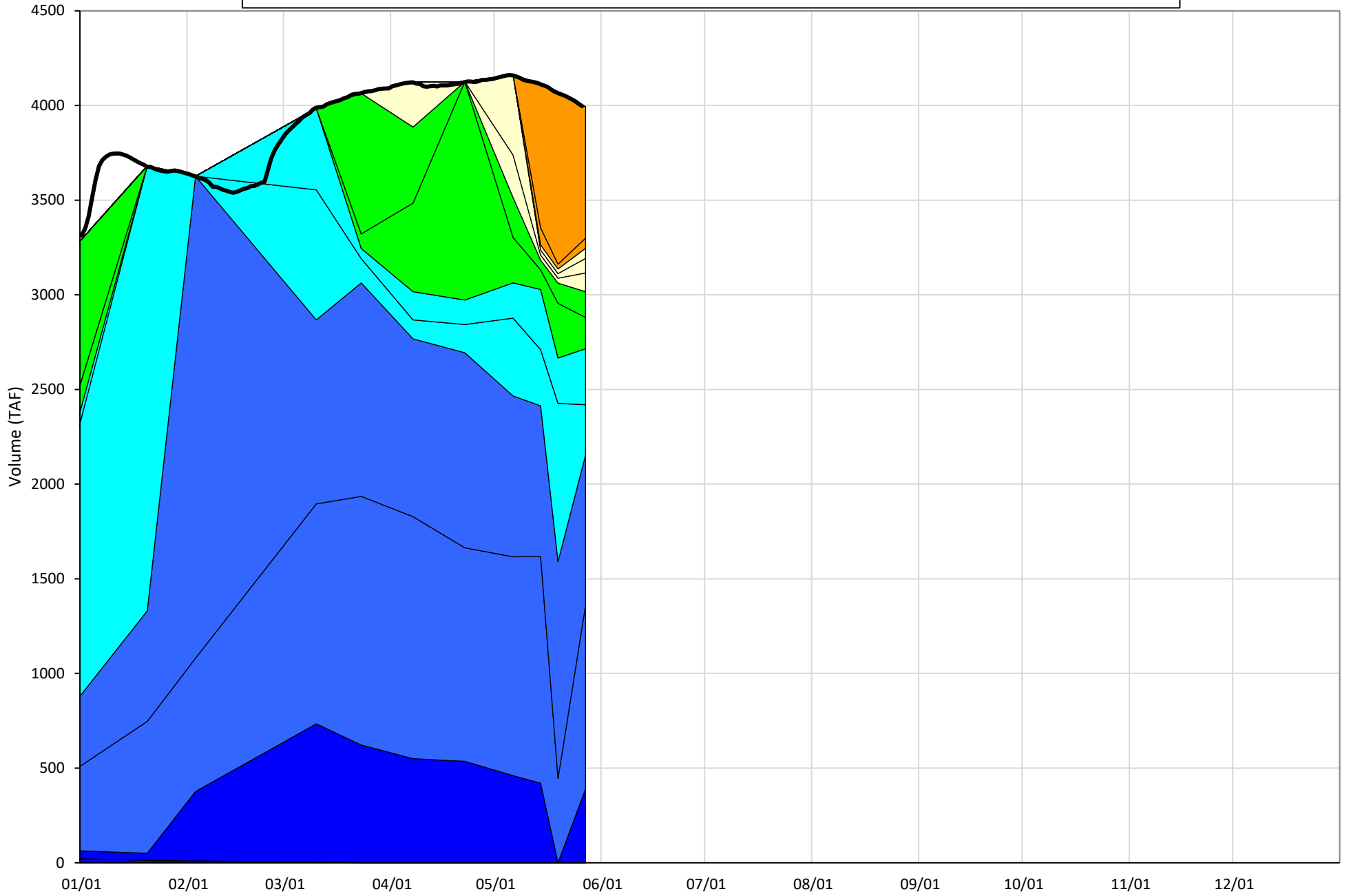
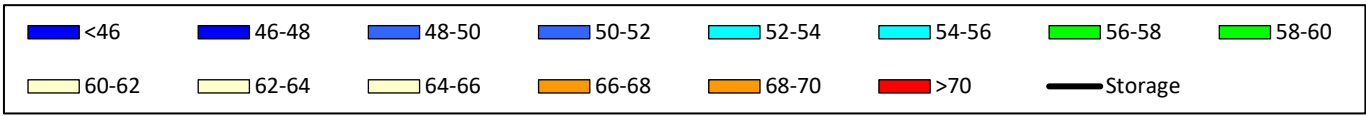
¹ Distances are approximate

Shasta Lake Isothermobaths & Cold Water Pool Statistics

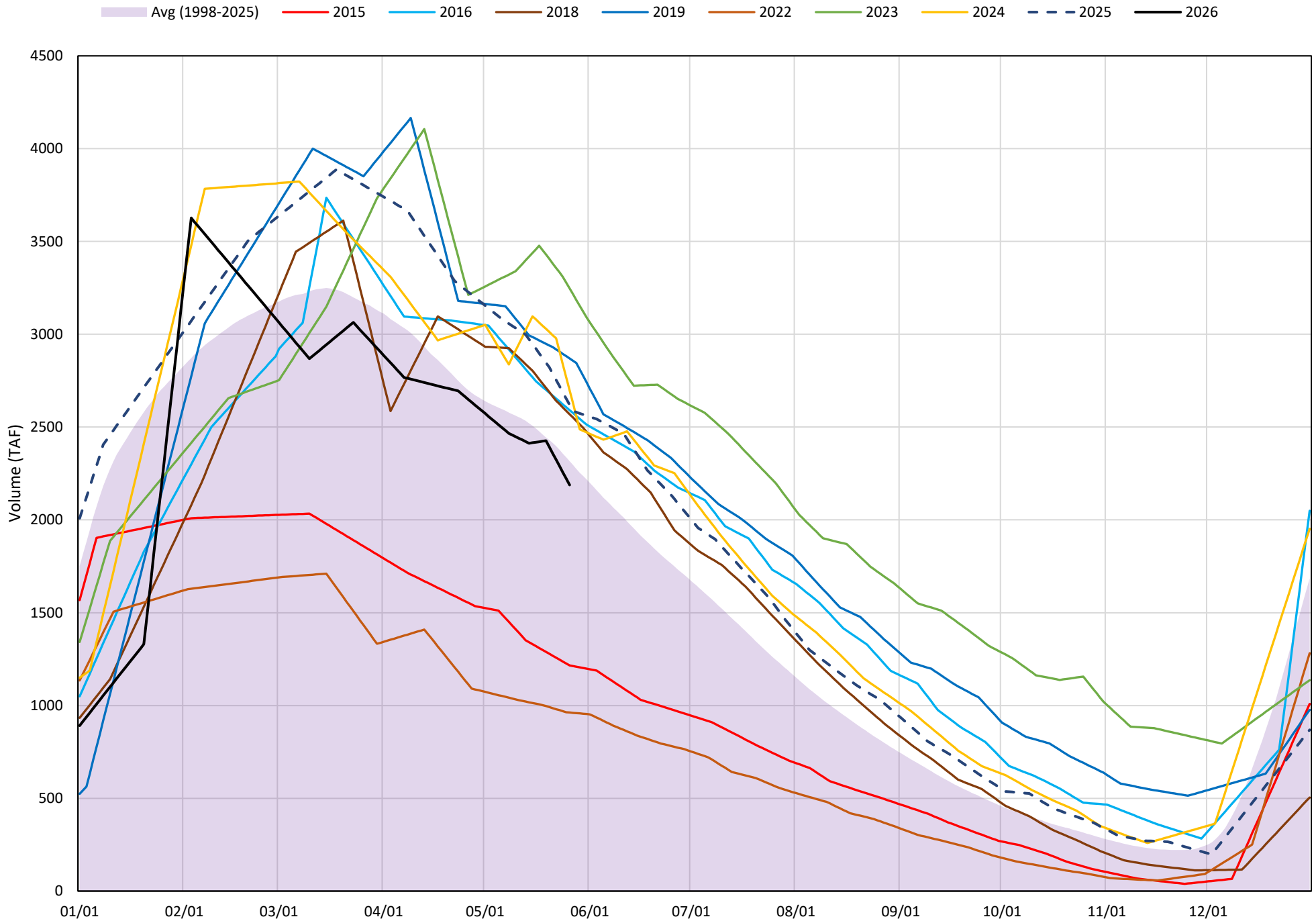
2026

| Page | Description |
|------|--|
| 6 | - Shasta Lake Isothermobaths Plot |
| 7 | - Shasta Lake Cold Water Pool Volume $\leq 52^{\circ}\text{F}$ |
| 8 | - Shasta Lake Cold Water Pool Volume $\leq 50^{\circ}\text{F}$ |
| 9 | - Shasta Lake Cold Water Pool Volume $\leq 48^{\circ}\text{F}$ |
| 10 | - Shasta Lake Cold Water Pool Volume $\leq 52^{\circ}\text{F}$ - Percent Exceedances |
| 11 | - Shasta Lake Cold Water Pool Volume $\leq 50^{\circ}\text{F}$ - Percent Exceedances |
| 12 | - Shasta Lake Cold Water Pool Volume $\leq 48^{\circ}\text{F}$ - Percent Exceedances |
| 13 | - Shasta Lake Cold Water Pool Comparison by Year |

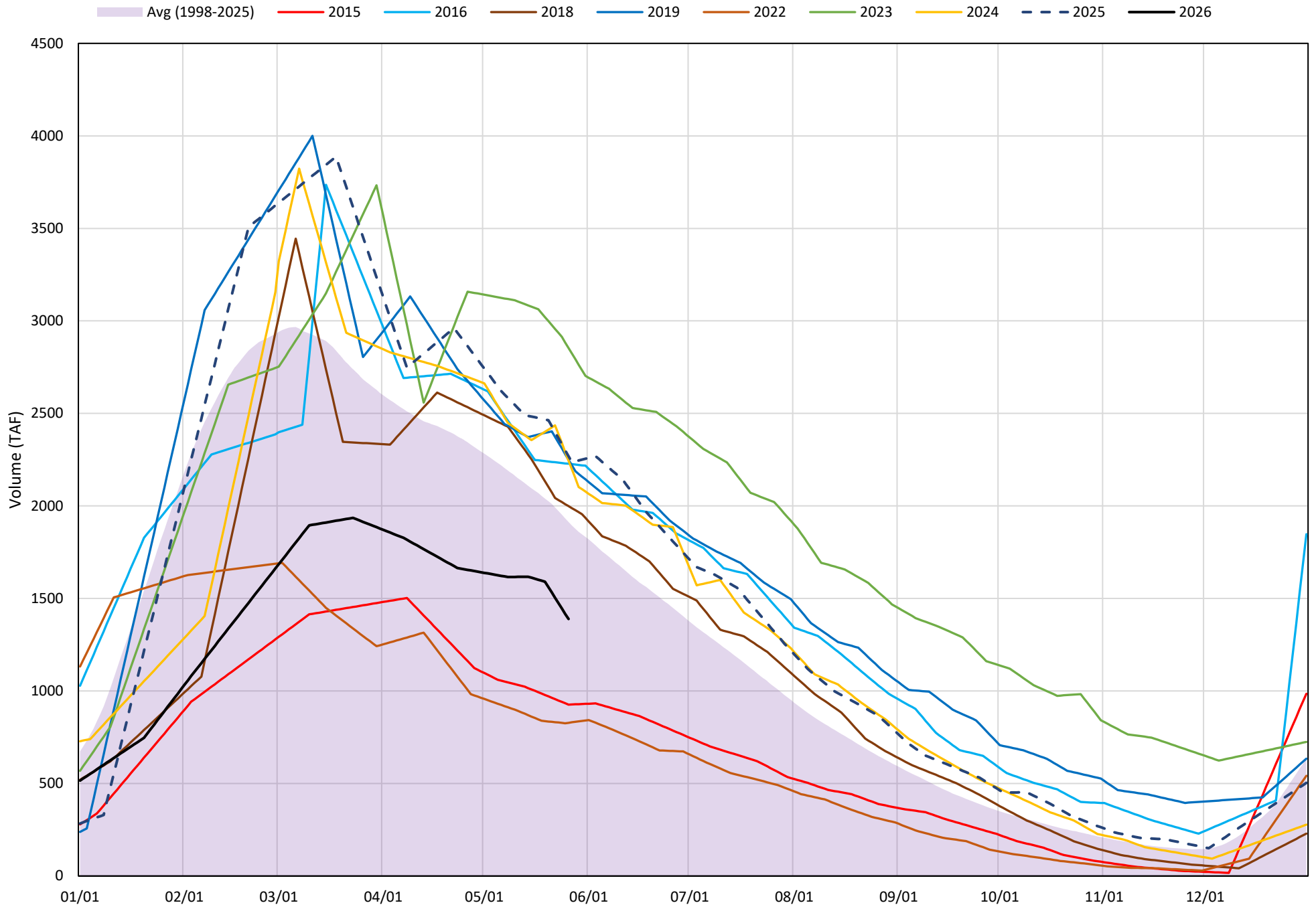
Shasta Lake Isothermobaths Plot - 2026



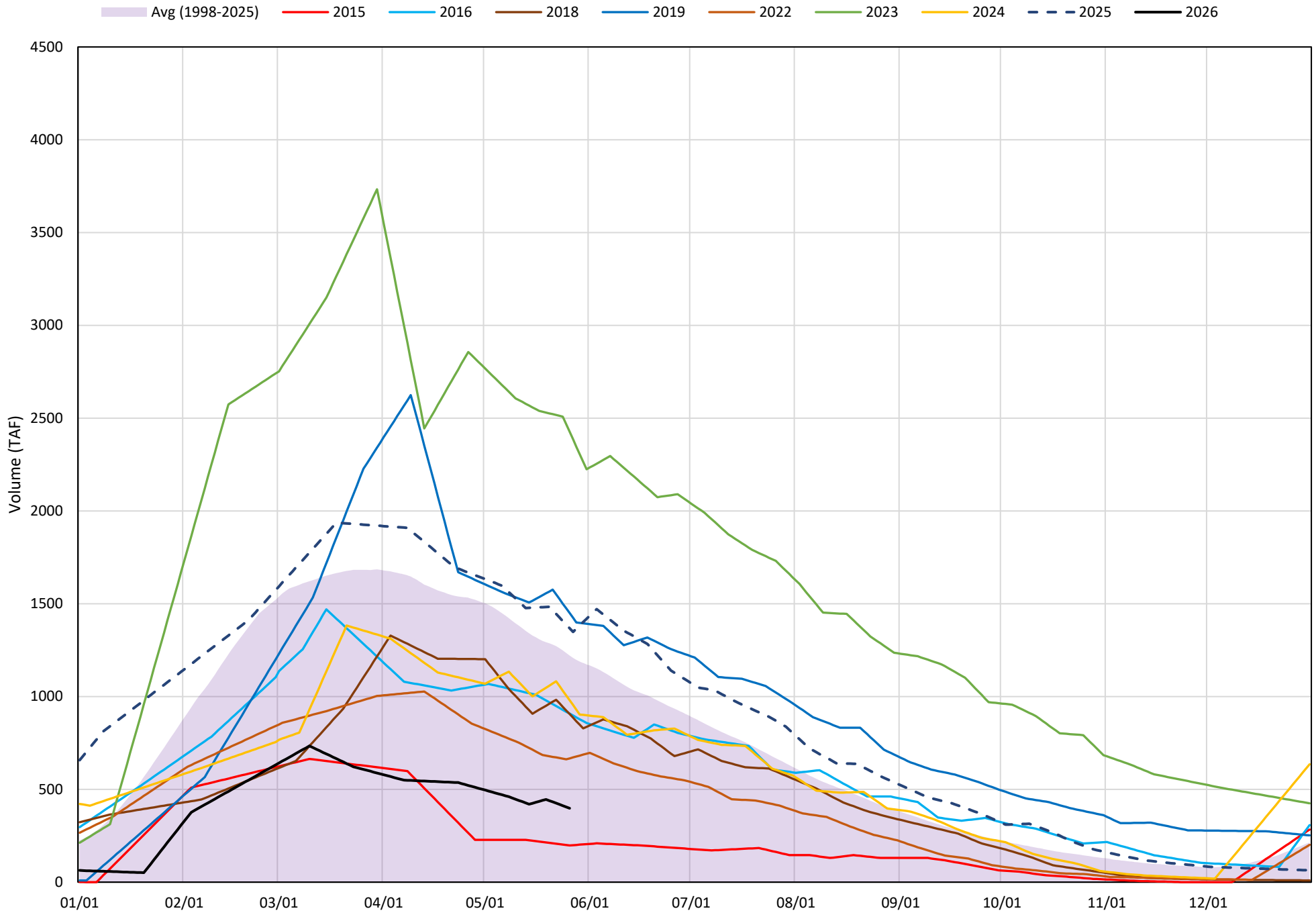
Shasta Lake Cold Water Pool Volume $\leq 52^{\circ}\text{F}$



Shasta Lake Cold Water Pool Volume $\leq 50^{\circ}\text{F}$

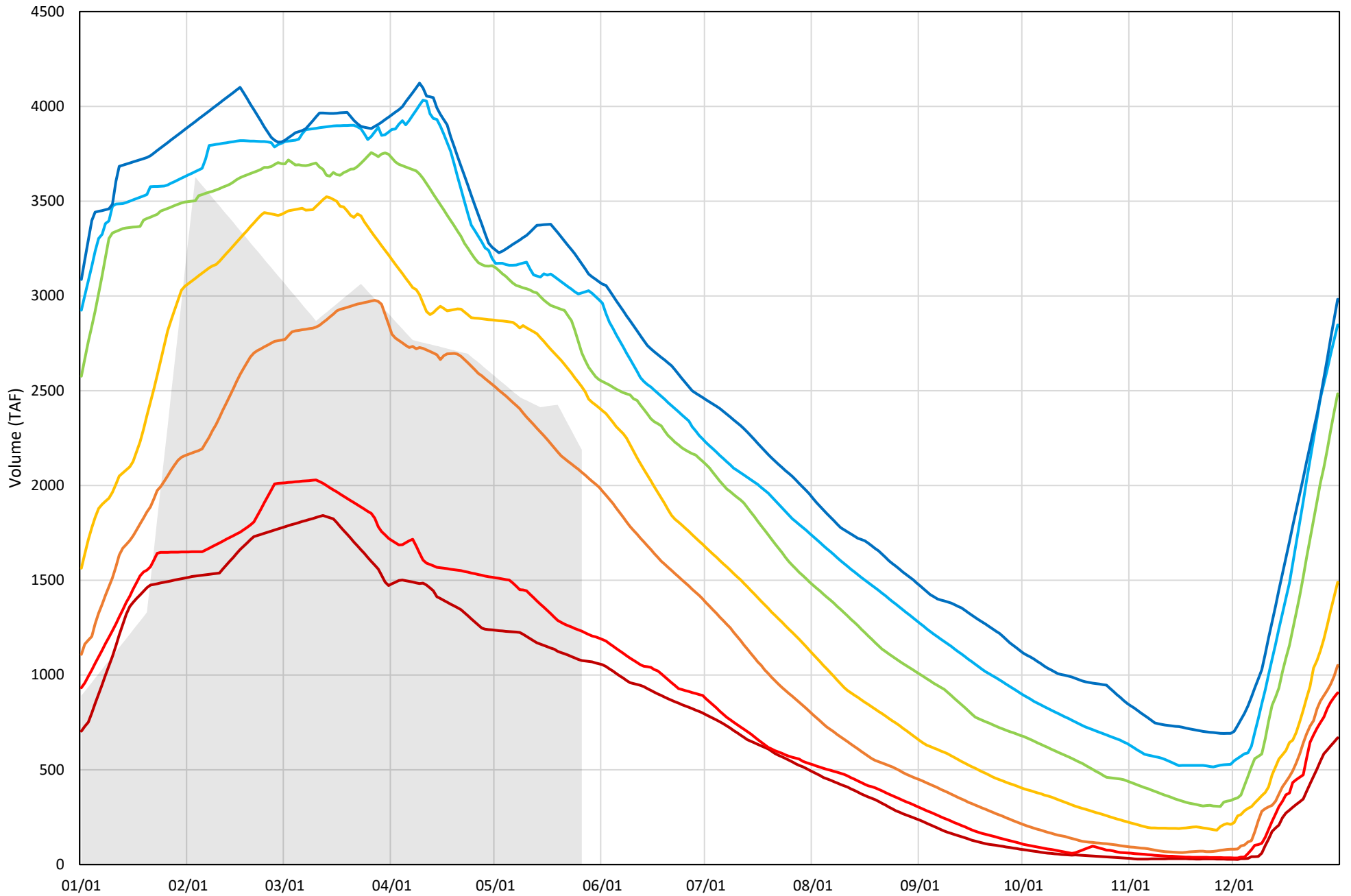


Shasta Lake Cold Water Pool Volume $\leq 48^{\circ}\text{F}$



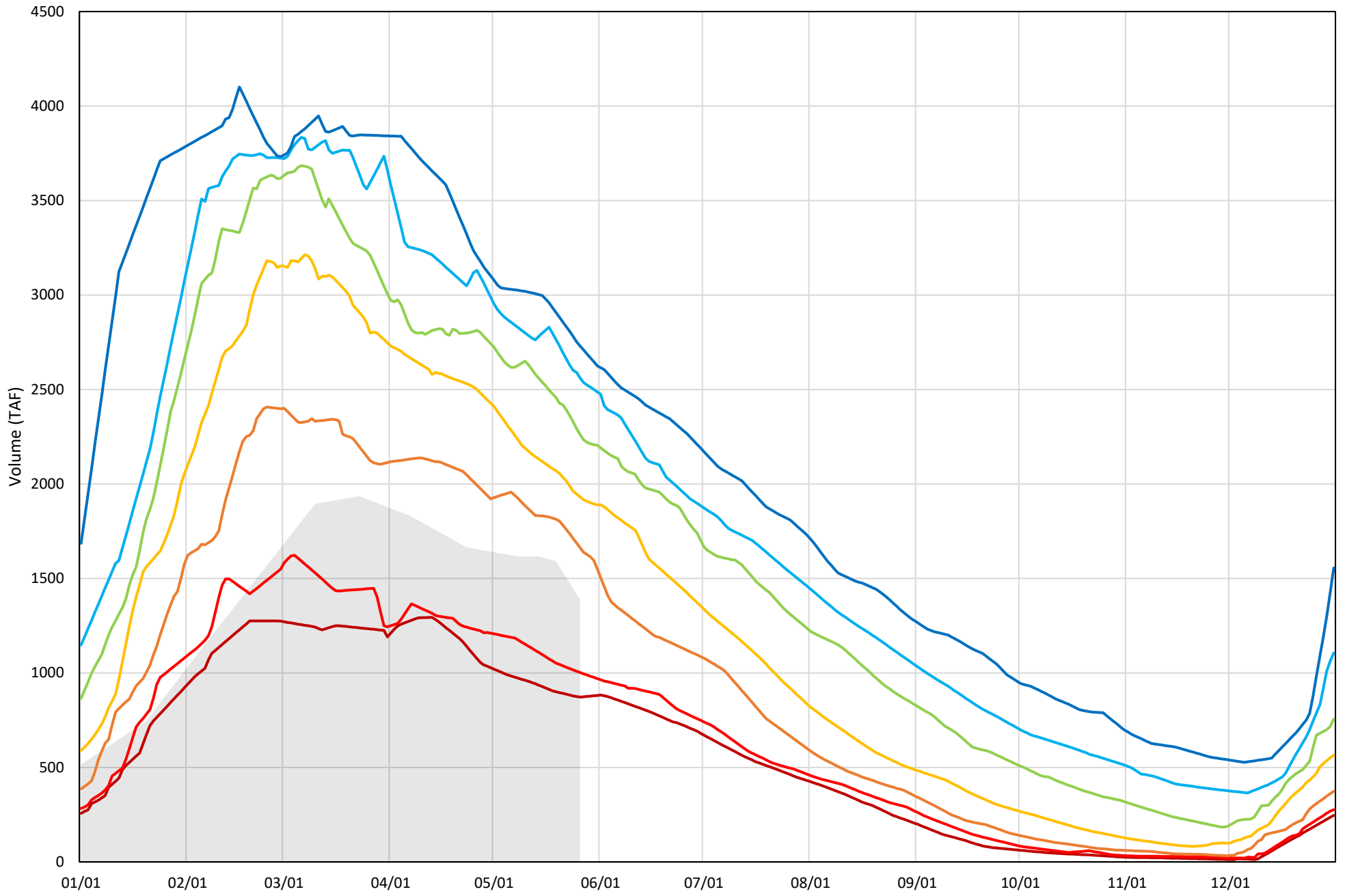
Shasta Lake Cold Water Pool Volume $\leq 52^{\circ}\text{F}$ - Percent Exceedances (1998-2025)

2026 95 90 75 50 25 10 5



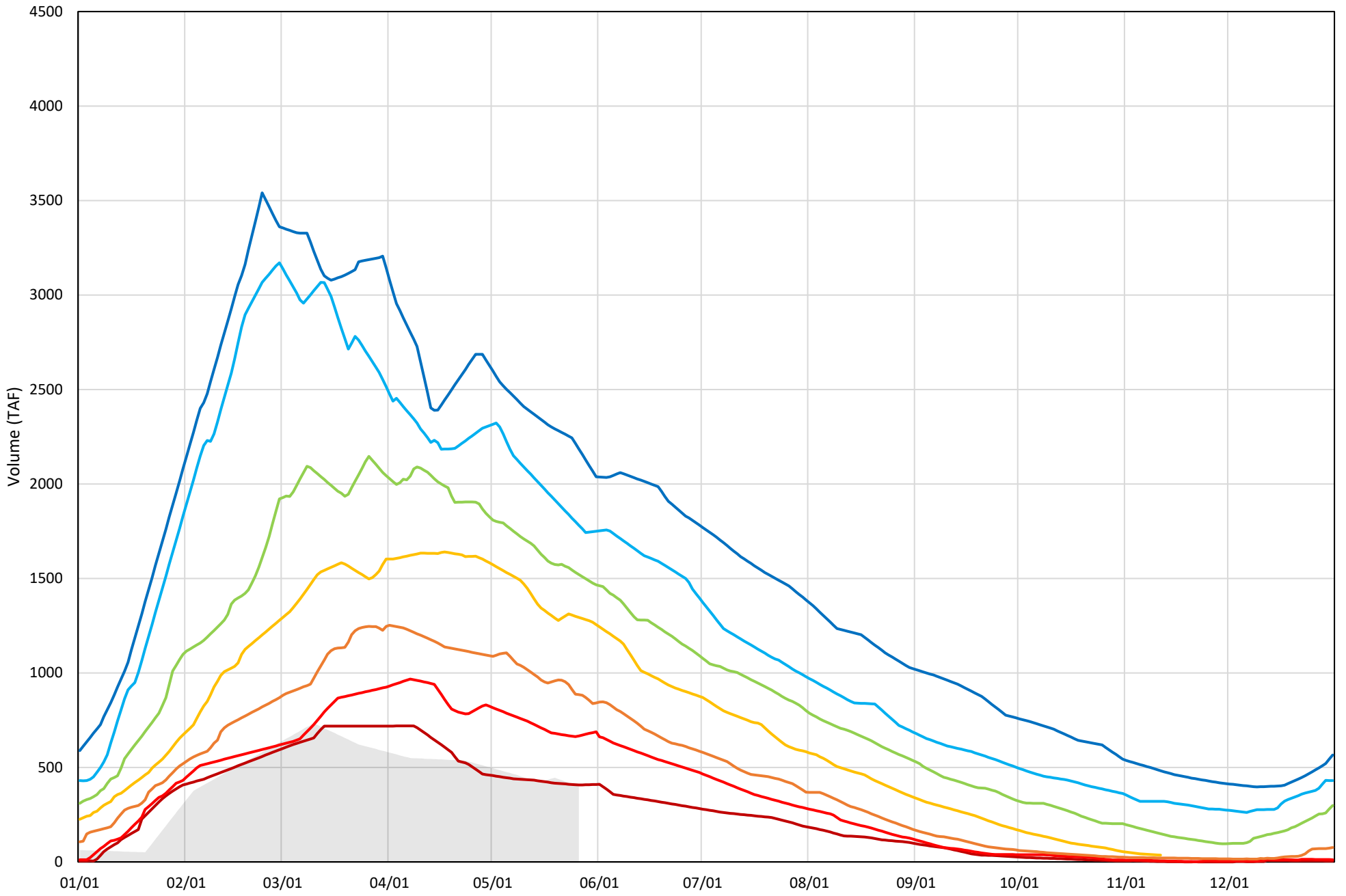
Shasta Lake Cold Water Pool Volume $\leq 50^{\circ}\text{F}$ - Percent Exceedances (1998-2025)

2026 95 90 75 50 25 10 5



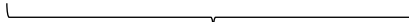
Shasta Lake Cold Water Pool Volume $\leq 48^{\circ}\text{F}$ - Percent Exceedances (1998-2025)

2026 95 90 75 50 25 10 5




Shasta Lake Cold Water Pool Comparison by Year (for Specified Date)

| May-27 2026 | Δ TAF | | | | % Δ | | | |
|----------------|-------|------|------|-----------|------|------|------|-----------|
| | ≤52° | ≤50° | ≤48° | Abs. Avg. | ≤52° | ≤50° | ≤48° | Abs. Avg. |
| 1998 | 885 | 1157 | 1228 | 1090 | 40 | 83 | 309 | 144 |
| 1999 | 359 | 853 | 1371 | 861 | 16 | 61 | 345 | 141 |
| 2000 | 282 | 356 | 578 | 405 | 13 | 26 | 145 | 61 |
| 2001 | -22 | 534 | 1073 | 543 | -1 | 38 | 270 | 103 |
| 2002 | 306 | 761 | 1140 | 736 | 14 | 55 | 287 | 118 |
| 2003 | 391 | 435 | 449 | 425 | 18 | 31 | 113 | 54 |
| 2004 | -73 | 379 | 870 | 440 | -3 | 27 | 219 | 83 |
| 2005 | 110 | 304 | 481 | 298 | 5 | 22 | 121 | 49 |
| 2006 | 397 | 877 | 1058 | 777 | 18 | 63 | 266 | 116 |
| 2007 | -1 | 551 | 1021 | 524 | 0 | 40 | 257 | 99 |
| 2008 | -611 | -16 | 730 | 452 | -28 | -1 | 183 | 71 |
| 2009 | -495 | -9 | 702 | 402 | -23 | -1 | 176 | 67 |
| 2010 | 797 | 1171 | 1164 | 1044 | 36 | 84 | 293 | 138 |
| 2011 | 821 | 1191 | 1492 | 1168 | 38 | 86 | 375 | 166 |
| 2012 | 644 | 1134 | 1190 | 989 | 29 | 82 | 299 | 137 |
| 2013 | -135 | 449 | 970 | 518 | -6 | 32 | 244 | 94 |
| 2014 | -954 | -379 | 265 | 532 | -44 | -27 | 67 | 46 |
| 2015 | -973 | -462 | -200 | 545 | -44 | -33 | -50 | 43 |
| 2016 | 403 | 839 | 510 | 584 | 18 | 60 | 128 | 69 |
| 2017 | 511 | 517 | 922 | 650 | 23 | 37 | 232 | 97 |
| 2018 | 381 | 610 | 508 | 500 | 17 | 44 | 128 | 63 |
| 2019 | 681 | 861 | 1052 | 865 | 31 | 62 | 264 | 119 |
| 2020 | 54 | 264 | 322 | 213 | 2 | 19 | 81 | 34 |
| 2021 | -956 | -322 | 314 | 531 | -44 | -23 | 79 | 49 |
| 2022 | -1226 | -560 | 269 | 685 | -56 | -40 | 68 | 55 |
| 2023 | 1058 | 1465 | 2029 | 1518 | 48 | 106 | 510 | 221 |
| 2024 | 509 | 856 | 582 | 649 | 23 | 62 | 146 | 77 |
| 2025 | 431 | 880 | 970 | 761 | 20 | 63 | 244 | 109 |



Historical - Current



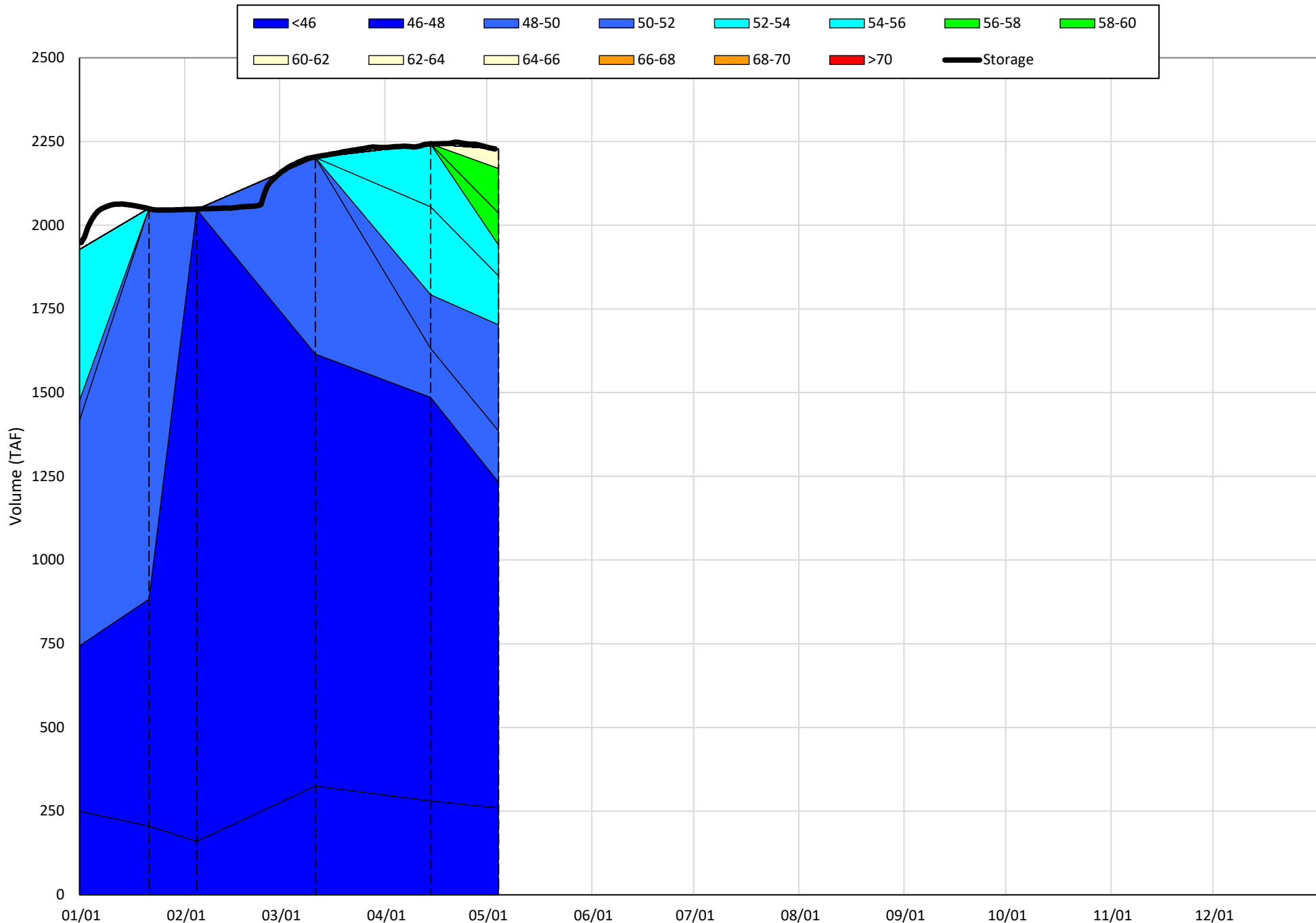
(Historical - Current) / Current

Trinity Lake Isothermobaths & Cold Water Pool Statistics

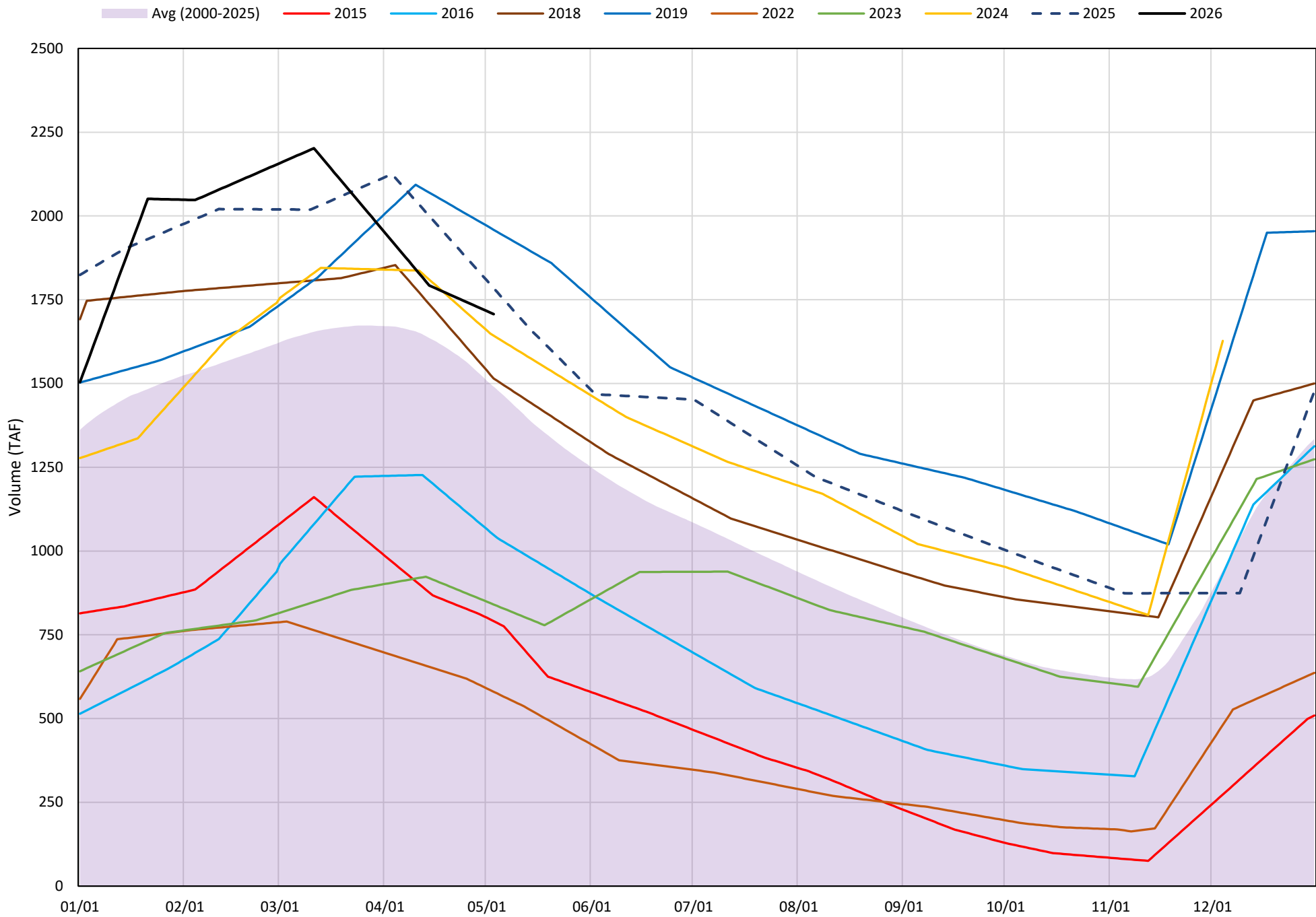
2026

| Page | Description |
|------|---|
| 15 | - Trinity Lake Isothermobaths Plot |
| 16 | - Trinity Lake Cold Water Pool Volume $\leq 52^{\circ}\text{F}$ |
| 17 | - Trinity Lake Cold Water Pool Volume $\leq 50^{\circ}\text{F}$ |
| 18 | - Trinity Lake Cold Water Pool Volume $\leq 48^{\circ}\text{F}$ |
| 19 | - Trinity Lake Cold Water Pool Volume $\leq 52^{\circ}\text{F}$ - Percent Exceedances |
| 20 | - Trinity Lake Cold Water Pool Volume $\leq 50^{\circ}\text{F}$ - Percent Exceedances |
| 21 | - Trinity Lake Cold Water Pool Volume $\leq 48^{\circ}\text{F}$ - Percent Exceedances |
| 22 | - Trinity Lake Cold Water Pool Comparison by Year |

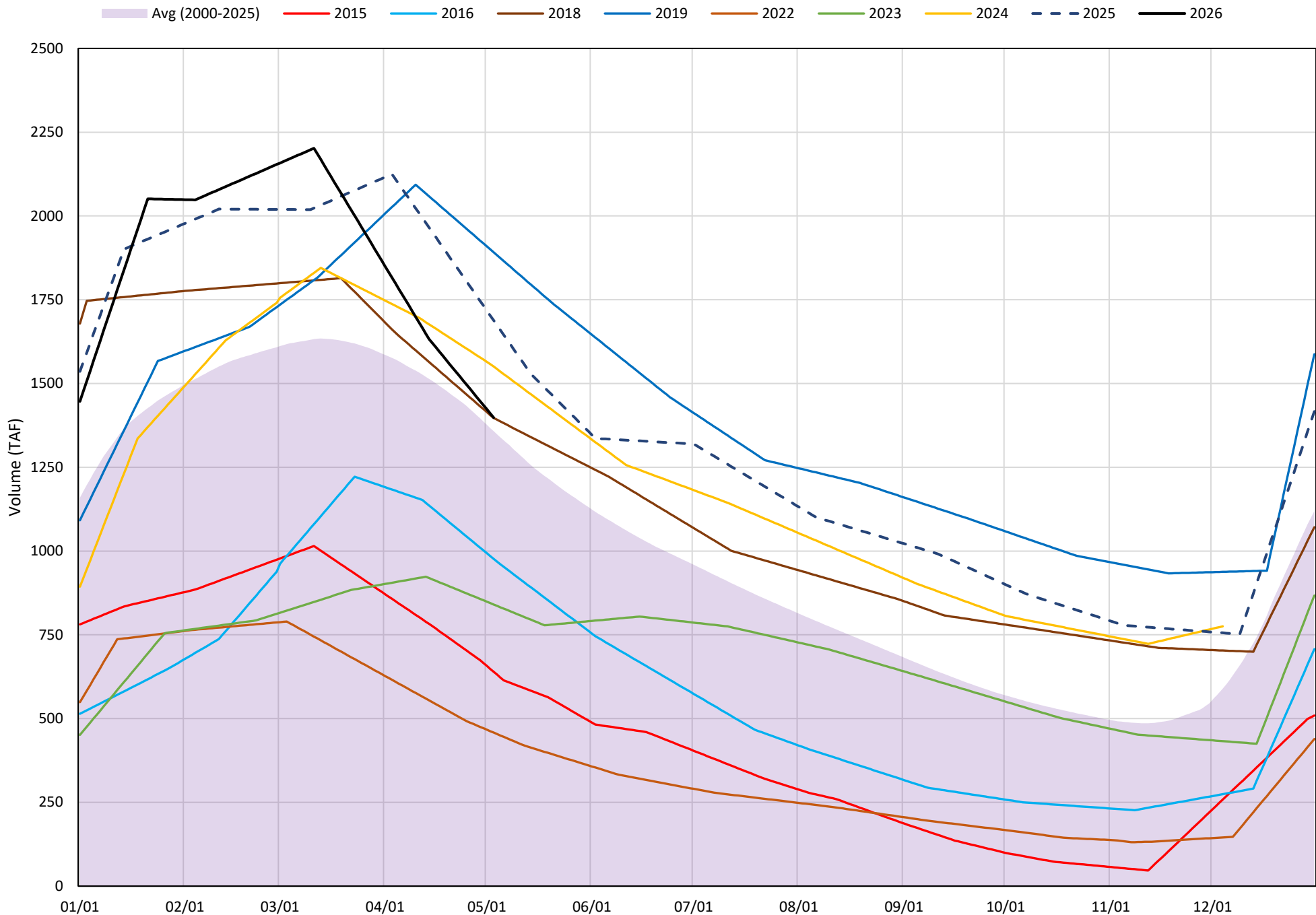
Trinity Lake Isothermobaths Plot - 2026



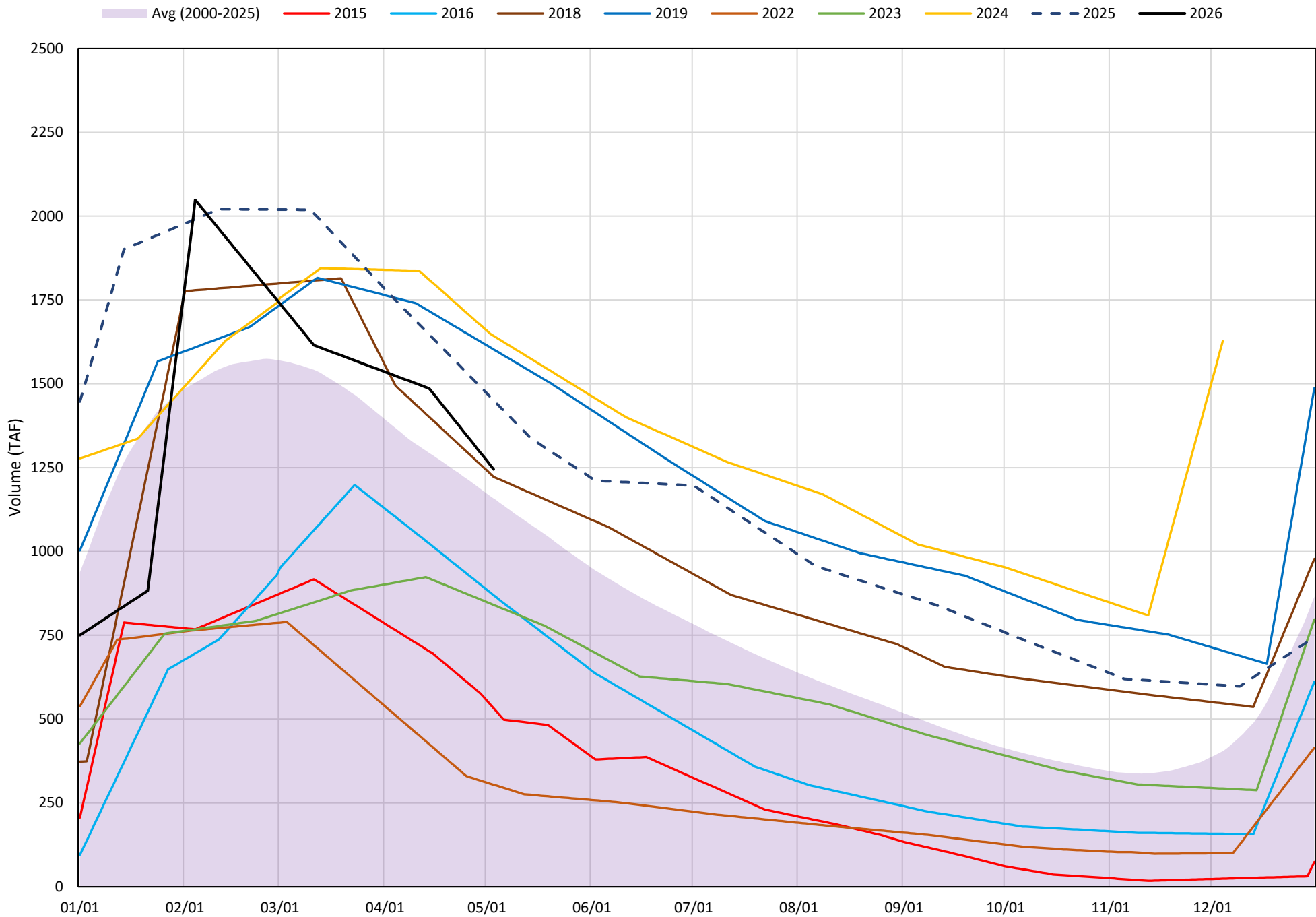
Trinity Lake Cold Water Pool Volume ≤52°F



Trinity Lake Cold Water Pool Volume ≤50°F

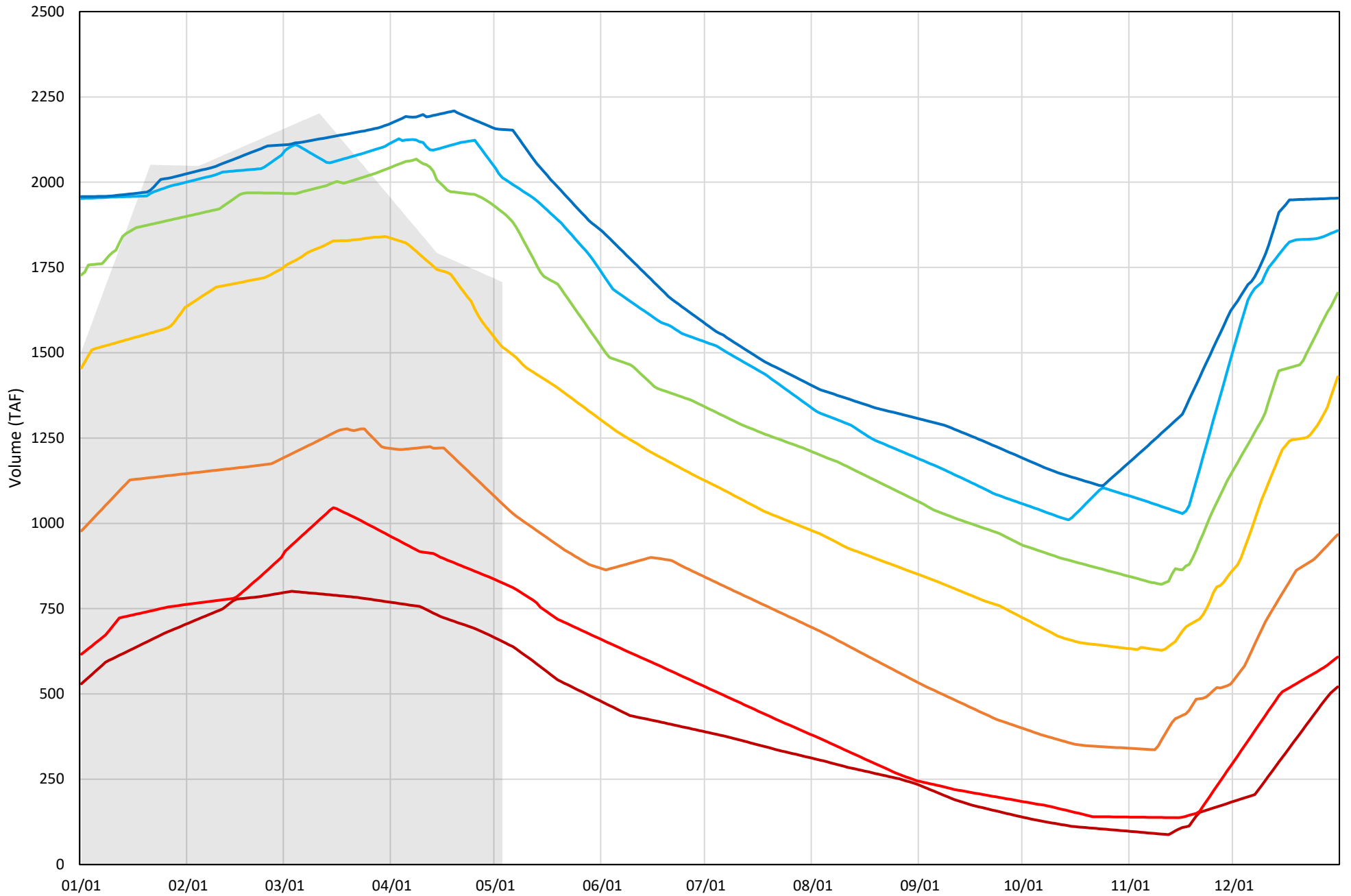


Trinity Lake Cold Water Pool Volume ≤48°F



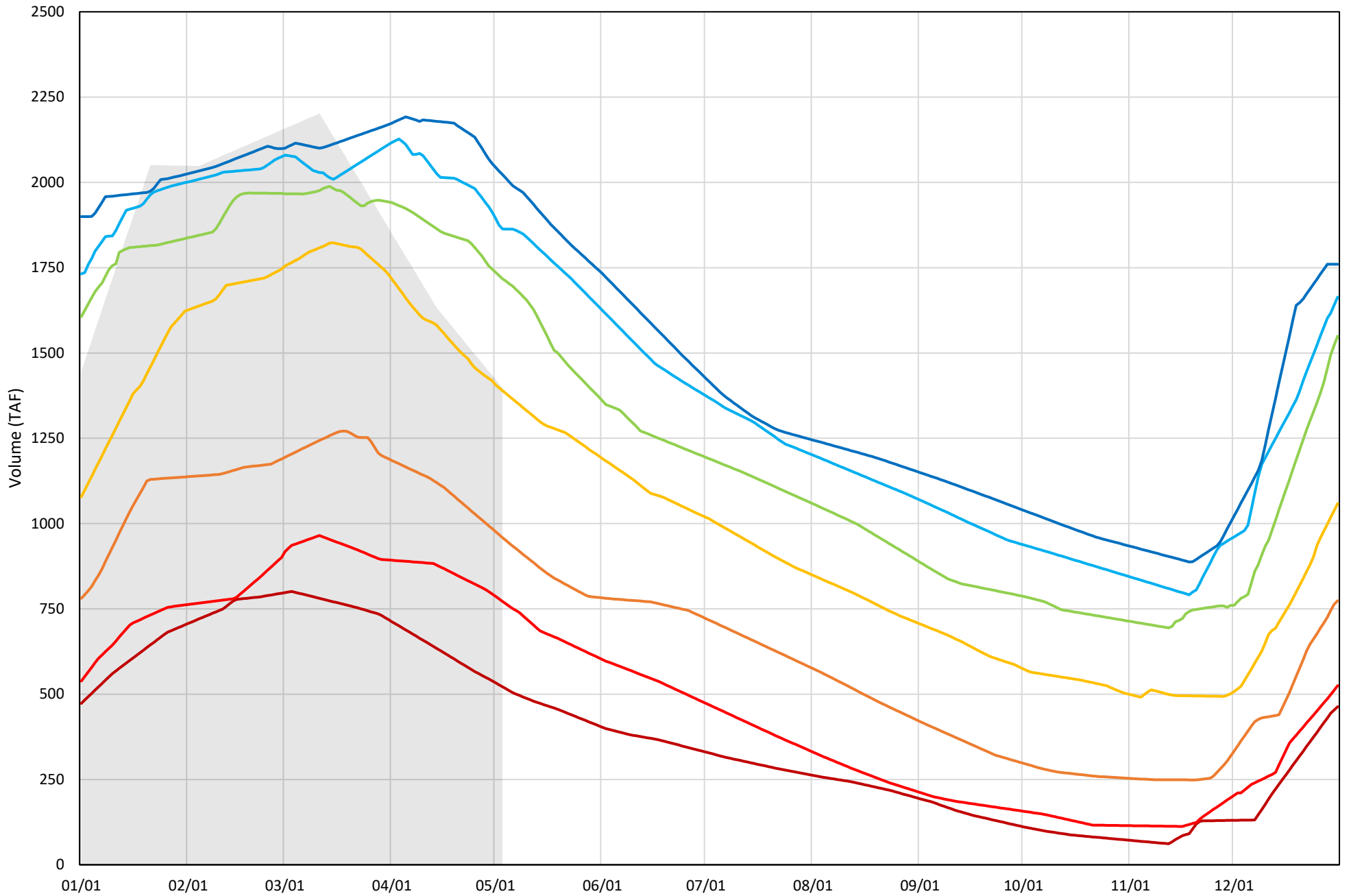
Trinity Lake Cold Water Pool Volume $\leq 52^{\circ}\text{F}$ - Percent Exceedances (2000-2025)

2026 95 90 75 50 25 10 5



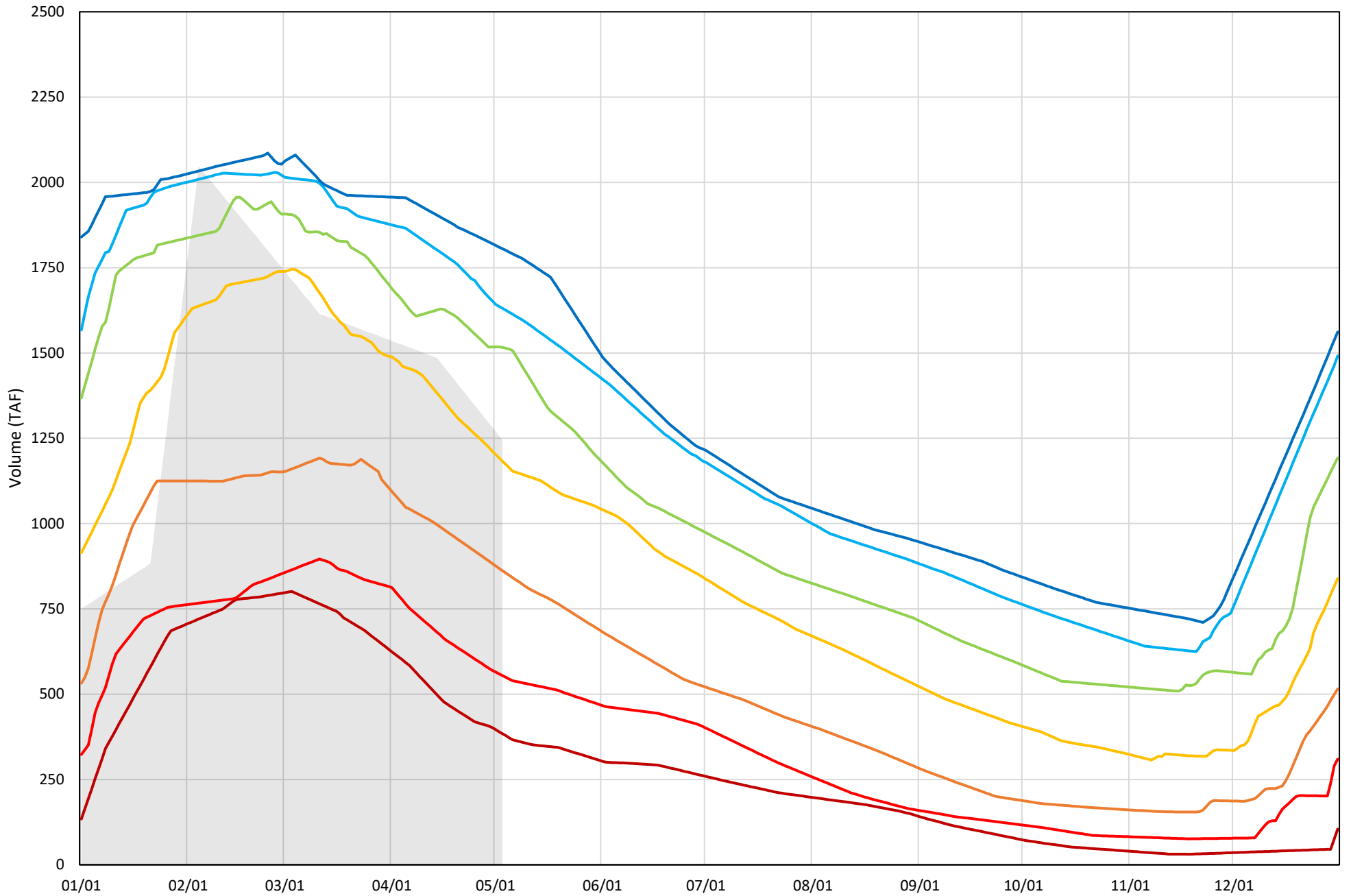
Trinity Lake Cold Water Pool Volume $\leq 50^{\circ}\text{F}$ - Percent Exceedances (2000-2025)

2026 95 90 75 50 25 10 5



Trinity Lake Cold Water Pool Volume $\leq 48^{\circ}\text{F}$ - Percent Exceedances (2000-2025)

2026 95 90 75 50 25 10 5



Trinity Cold Water Pool Comparison by Year (for Specified Date)

| May-04 2026 | Δ TAF | | | | % Δ | | | |
|----------------|-------|------|------|-----------|------|------|------|-----------|
| | ≤52° | ≤50° | ≤48° | Abs. Avg. | ≤52° | ≤50° | ≤48° | Abs. Avg. |
| 2000 | 243 | 443 | 314 | 333 | 14 | 32 | 25 | 24 |
| 2001 | -225 | 3 | -77 | 102 | -13 | 0 | -6 | 7 |
| 2002 | -188 | -5 | 39 | 77 | -11 | 0 | 3 | 5 |
| 2003 | 455 | 318 | 257 | 343 | 27 | 23 | 21 | 23 |
| 2004 | 37 | 167 | 110 | 105 | 2 | 12 | 9 | 8 |
| 2005 | -57 | -125 | -276 | 153 | -3 | -9 | -22 | 11 |
| 2006 | 434 | 696 | 619 | 583 | 25 | 50 | 50 | 42 |
| 2007 | -192 | -99 | -47 | 113 | -11 | -7 | -4 | 7 |
| 2008 | -278 | -62 | -318 | 219 | -16 | -4 | -26 | 15 |
| 2009 | -647 | -491 | -681 | 606 | -38 | -35 | -55 | 43 |
| 2010 | -273 | -87 | -302 | 221 | -16 | -6 | -24 | 15 |
| 2011 | 201 | 325 | 344 | 290 | 12 | 23 | 28 | 21 |
| 2012 | 219 | 453 | 452 | 374 | 13 | 32 | 36 | 27 |
| 2013 | -315 | -99 | -148 | 187 | -18 | -7 | -12 | 12 |
| 2014 | -794 | -548 | -545 | 629 | -46 | -39 | -44 | 43 |
| 2015 | -916 | -758 | -713 | 796 | -54 | -54 | -57 | 55 |
| 2016 | -659 | -422 | -376 | 485 | -39 | -30 | -30 | 33 |
| 2017 | 222 | 384 | 320 | 309 | 13 | 27 | 26 | 22 |
| 2018 | -192 | -1 | -23 | 72 | -11 | 0 | -2 | 4 |
| 2019 | 252 | 493 | 357 | 368 | 15 | 35 | 29 | 26 |
| 2020 | -169 | -12 | -86 | 89 | -10 | -1 | -7 | 6 |
| 2021 | -807 | -569 | -560 | 645 | -47 | -41 | -45 | 44 |
| 2022 | -1127 | -940 | -941 | 1003 | -66 | -67 | -76 | 70 |
| 2023 | -866 | -558 | -404 | 609 | -51 | -40 | -32 | 41 |
| 2024 | -64 | 152 | 214 | 143 | -4 | 11 | 17 | 11 |
| 2025 | 78 | 290 | 206 | 191 | 5 | 21 | 17 | 14 |

}

Historical - Current

}

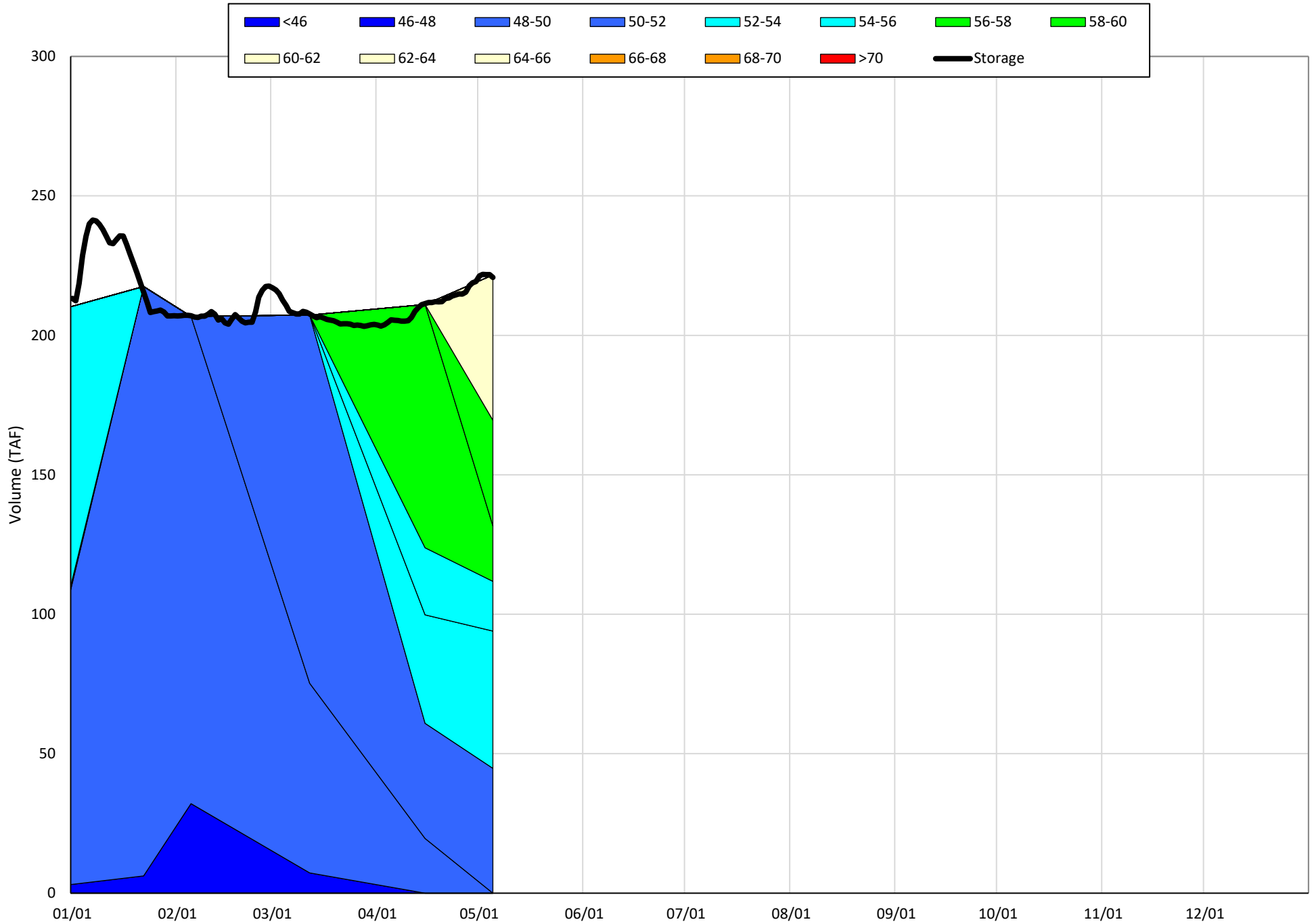
(Historical - Current) / Current

Whiskeytown Lake Isothermobaths & Cold Water Pool Statistics

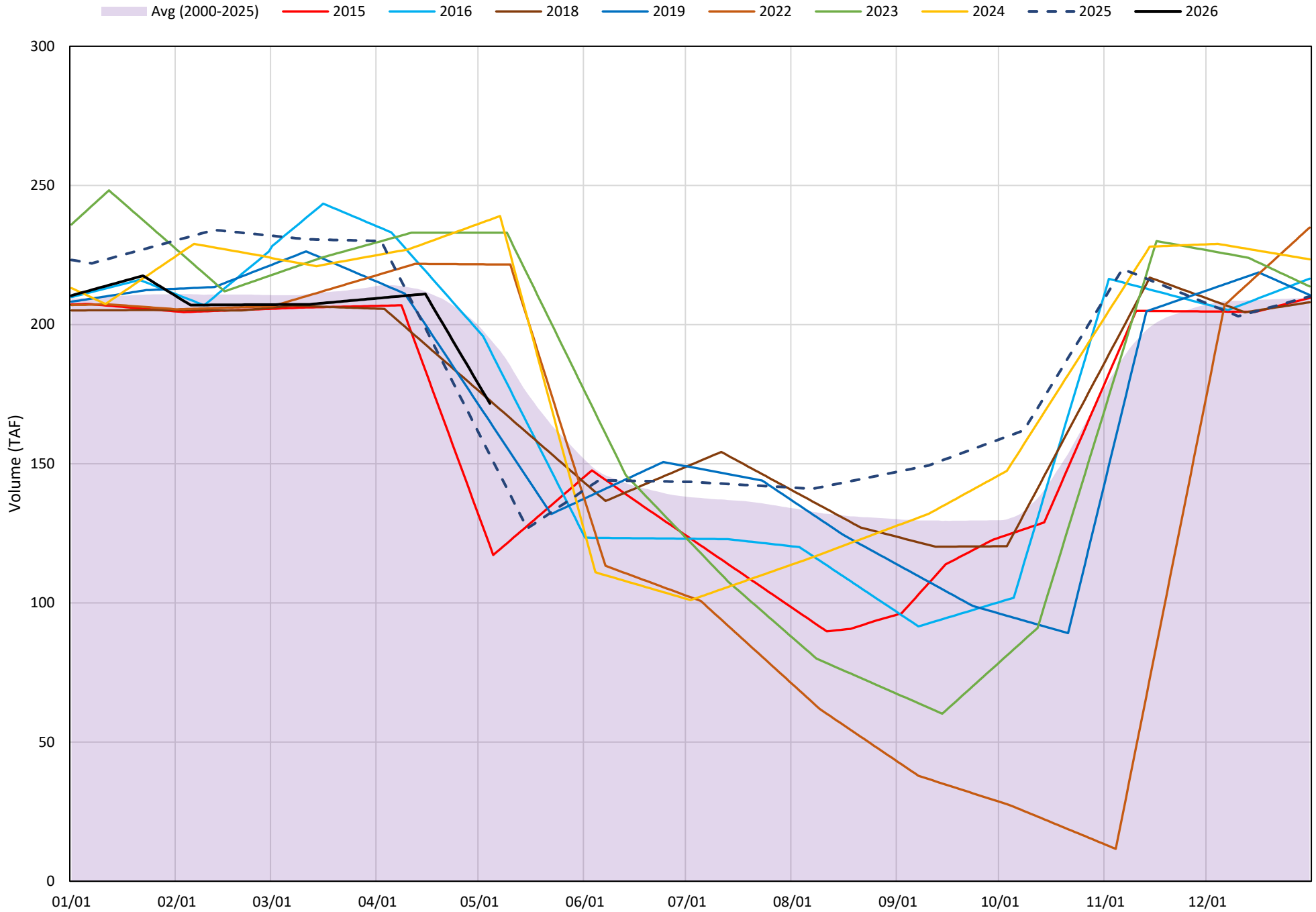
2026

| Page | Description |
|------|---|
| 24 | - Whiskeytown Lake Isothermobaths Plot |
| 25 | - Whiskeytown Lake Cold Water Pool Volume $\leq 60^{\circ}\text{F}$ |
| 26 | - Whiskeytown Lake Cold Water Pool Volume $\leq 58^{\circ}\text{F}$ |
| 27 | - Whiskeytown Lake Cold Water Pool Volume $\leq 56^{\circ}\text{F}$ |
| 28 | - Whiskeytown Lake Cold Water Pool Volume $\leq 60^{\circ}\text{F}$ - Percent Exceedances |
| 29 | - Whiskeytown Lake Cold Water Pool Volume $\leq 58^{\circ}\text{F}$ - Percent Exceedances |
| 30 | - Whiskeytown Lake Cold Water Pool Volume $\leq 56^{\circ}\text{F}$ - Percent Exceedances |
| 31 | - Whiskeytown Lake Cold Water Pool Comparison by Year |

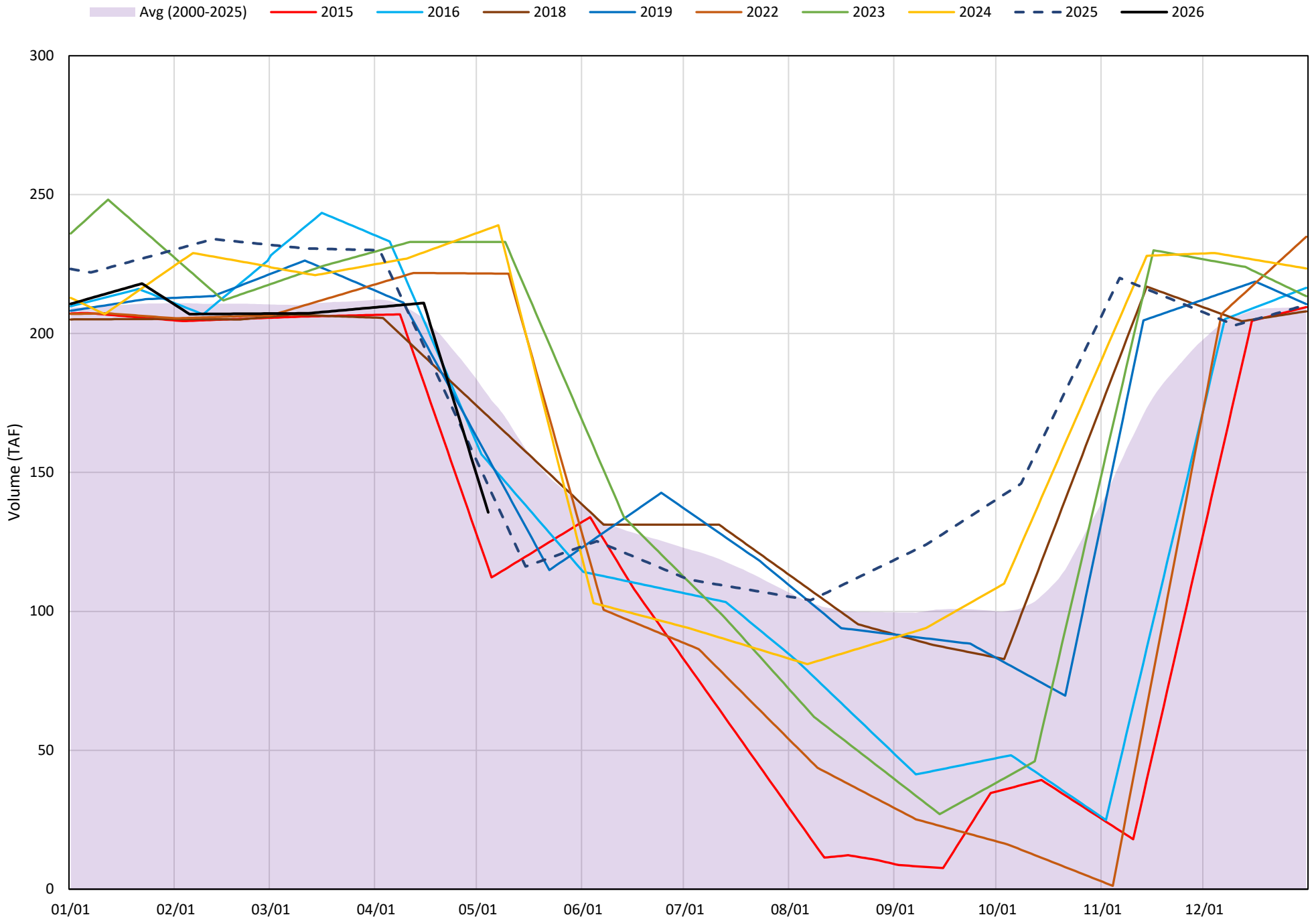
Whiskeytown Lake Isothermobaths Plot - 2026



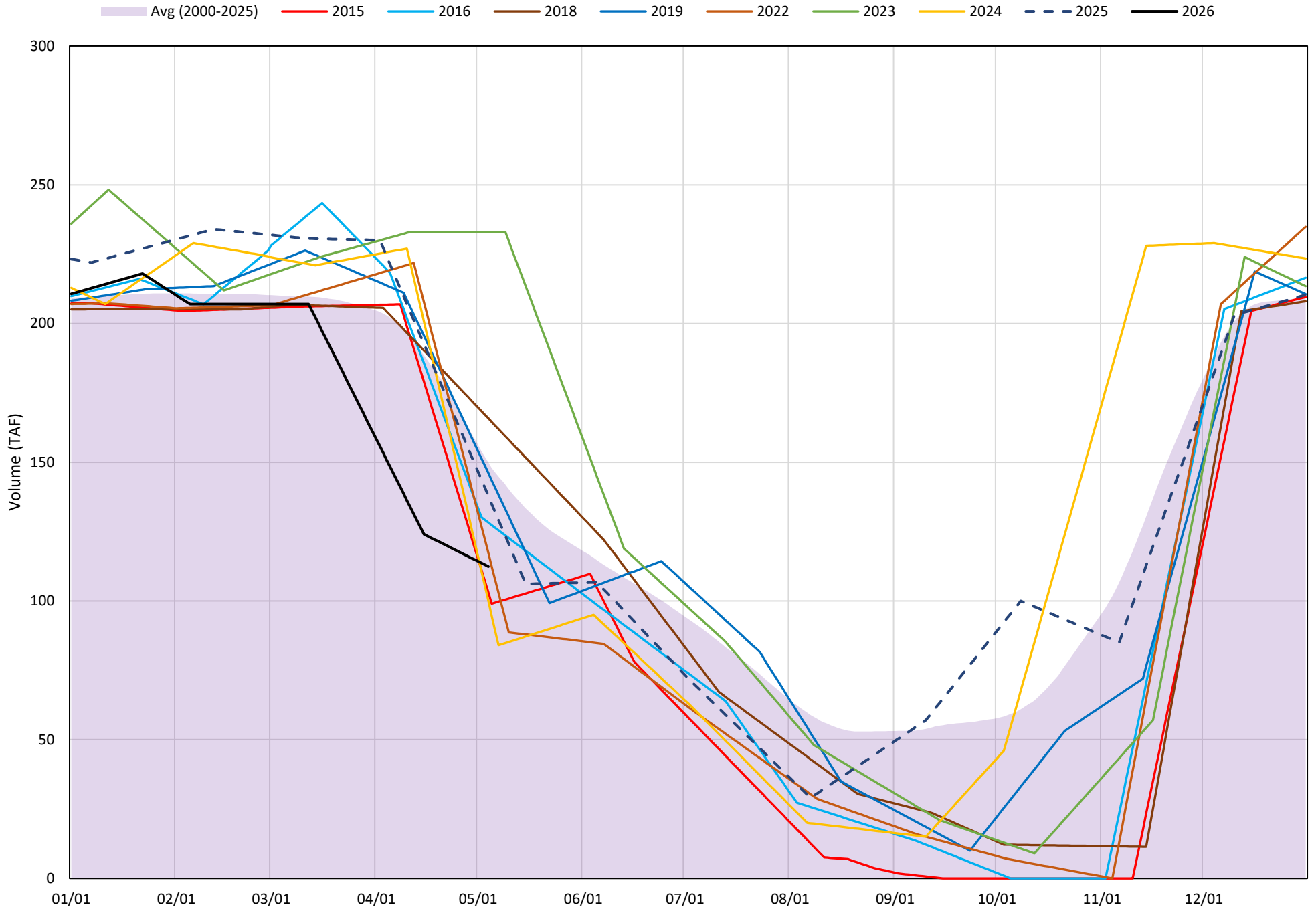
Whiskeytown Lake Cold Water Pool Volume ≤60°F



Whiskeytown Lake Cold Water Pool Volume $\leq 58^{\circ}\text{F}$

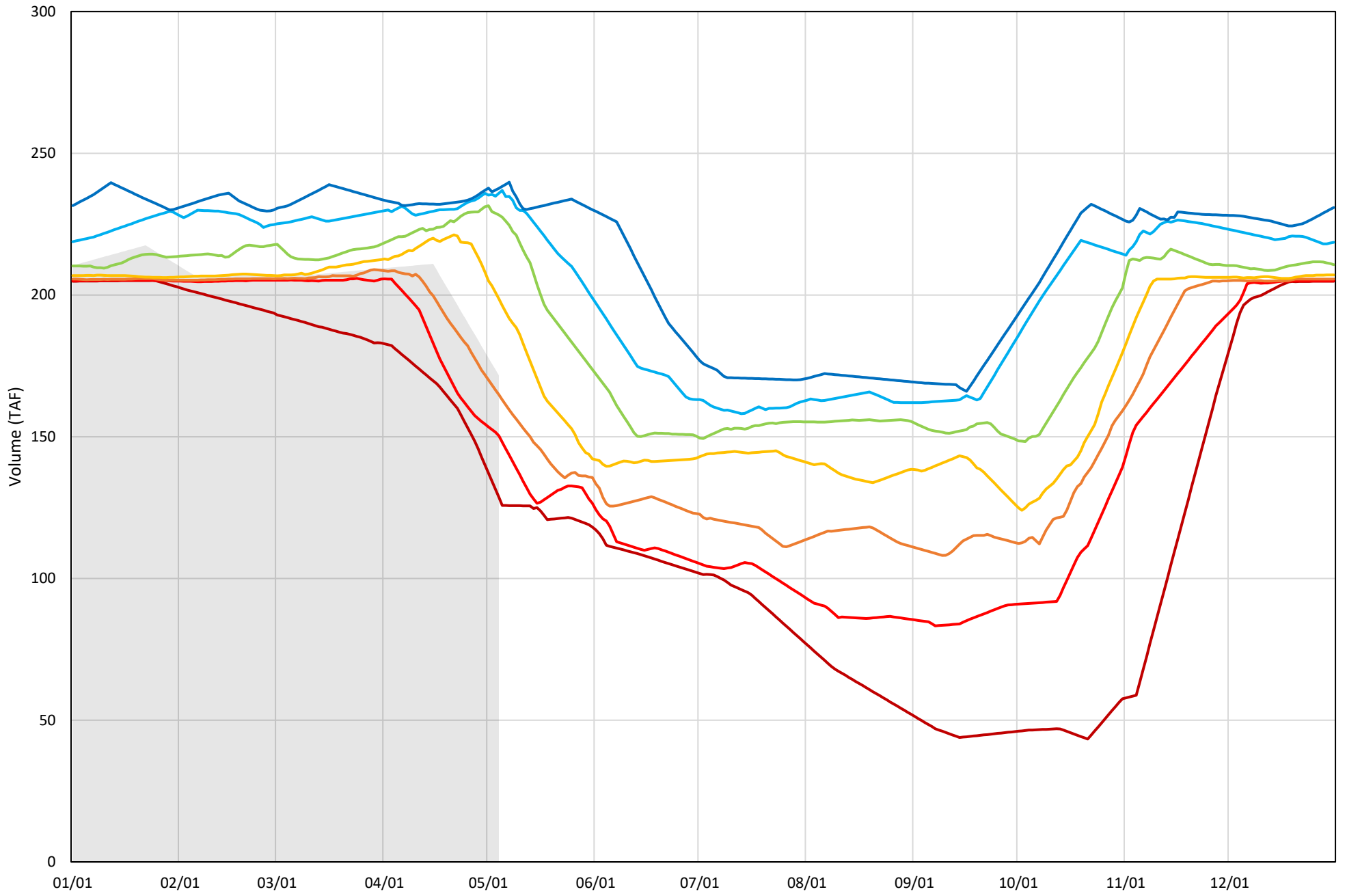


Whiskeytown Lake Cold Water Pool Volume $\leq 56^{\circ}\text{F}$



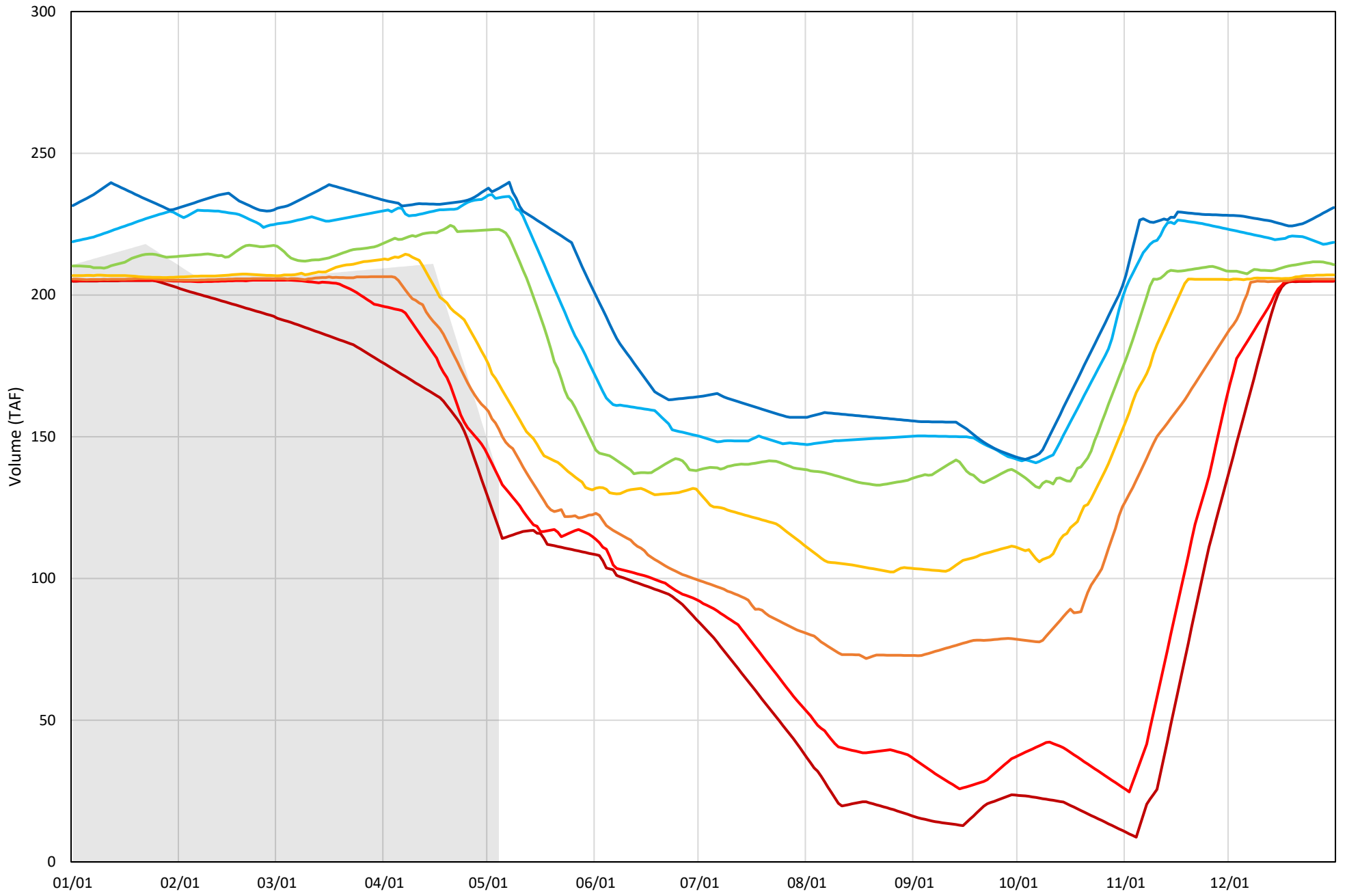
Whiskeytown Lake Cold Water Pool Volume $\leq 60^{\circ}\text{F}$ - Percent Exceedances (2000-2025)

2026 95 90 75 50 25 10 5



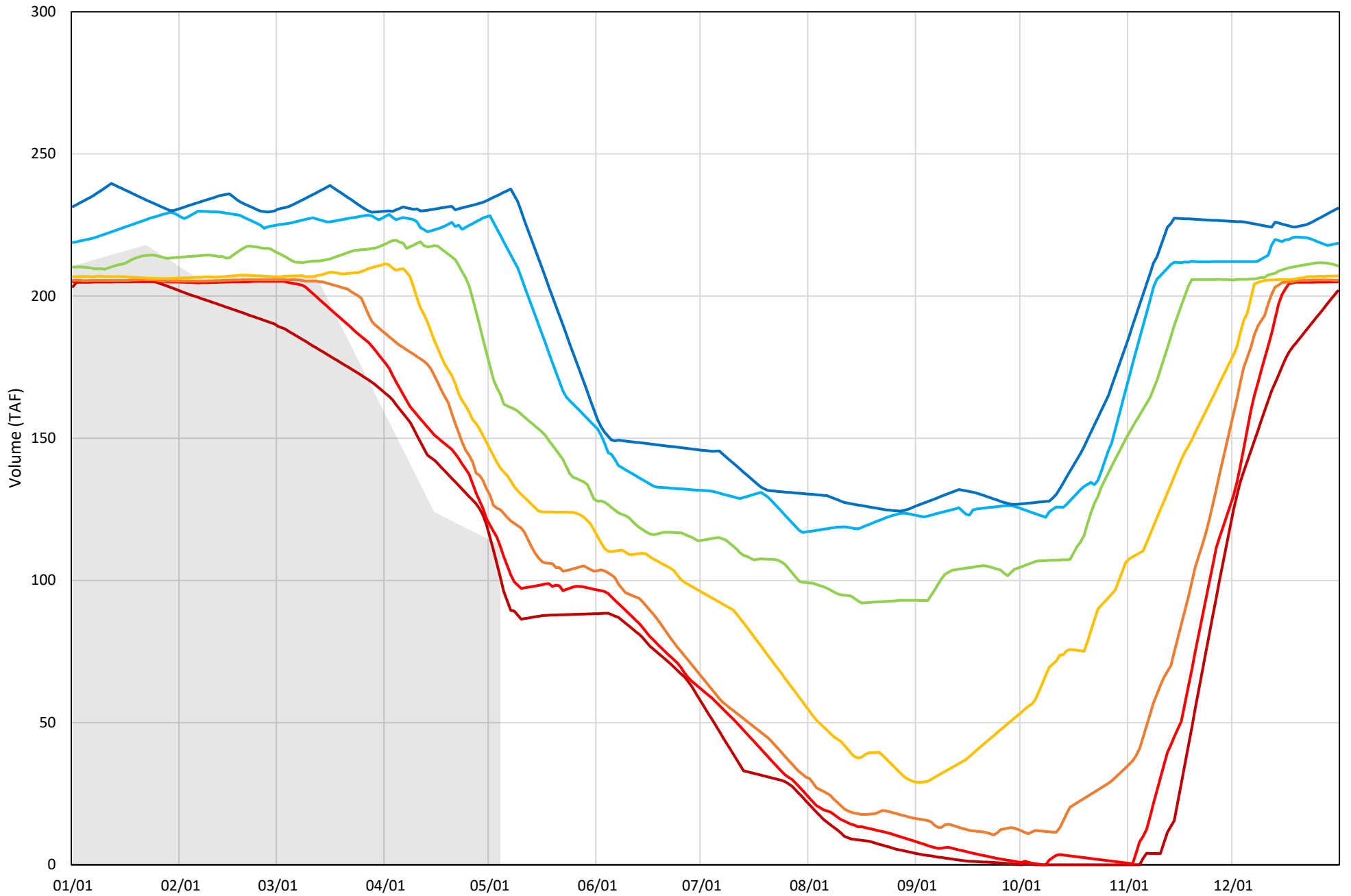
Whiskeytown Lake Cold Water Pool Volume $\leq 58^{\circ}\text{F}$ - Percent Exceedances (2000-2025)

2026 95 90 75 50 25 10 5



Whiskeytown Lake Cold Water Pool Volume $\leq 56^{\circ}\text{F}$ - Percent Exceedances (2000-2025)

2026 95 90 75 50 25 10 5



Whiskeytown Cold Water Pool Comparison by Year (for Specified Date)

| May-05 2026 | Δ TAF | | | | % Δ | | | |
|----------------|-------|-------|-------|-----------|-------|-------|-------|-----------|
| | ≤60° | ≤58° | ≤56° | Abs. Avg. | ≤60° | ≤58° | ≤56° | Abs. Avg. |
| 2000 | 44.8 | 32.3 | 13.2 | 30.1 | 26.1 | 23.8 | 11.7 | 20.6 |
| 2001 | 46.3 | 50.4 | 10.3 | 35.6 | 27.0 | 37.2 | 9.1 | 24.4 |
| 2002 | 34.6 | 21.0 | 22.1 | 25.9 | 20.1 | 15.5 | 19.7 | 18.4 |
| 2003 | 65.8 | 101.8 | 125.1 | 97.6 | 38.4 | 75.1 | 111.3 | 74.9 |
| 2004 | 13.9 | 36.0 | 37.3 | 29.1 | 8.1 | 26.6 | 33.2 | 22.6 |
| 2005 | -2.3 | 29.8 | 50.6 | 27.6 | -1.3 | 22.0 | 45.0 | 22.8 |
| 2006 | 40.8 | 54.4 | 52.9 | 49.4 | 23.8 | 40.1 | 47.1 | 37.0 |
| 2007 | 13.9 | 33.5 | 36.6 | 28.0 | 8.1 | 24.7 | 32.6 | 21.8 |
| 2008 | 57.8 | 93.4 | 104.0 | 85.1 | 33.7 | 68.9 | 92.5 | 65.0 |
| 2009 | -7.8 | 16.4 | 29.2 | 17.8 | -4.6 | 12.1 | 26.0 | 14.2 |
| 2010 | 56.2 | 92.2 | 79.2 | 75.8 | 32.7 | 68.0 | 70.5 | 57.0 |
| 2011 | 56.3 | 92.3 | 79.7 | 76.1 | 32.8 | 68.0 | 70.9 | 57.2 |
| 2012 | -18.0 | 12.9 | 26.0 | 19.0 | -10.5 | 9.5 | 23.1 | 14.4 |
| 2013 | -28.0 | 6.2 | 25.7 | 20.0 | -16.3 | 4.6 | 22.8 | 14.6 |
| 2014 | 63.6 | -14.6 | 3.3 | 27.1 | 37.1 | -10.7 | 2.9 | 16.9 |
| 2015 | -51.1 | -19.9 | -9.4 | 26.8 | -29.8 | -14.7 | -8.4 | 17.6 |
| 2016 | 19.3 | 18.1 | 15.8 | 17.7 | 11.3 | 13.3 | 14.1 | 12.9 |
| 2017 | 57.6 | 38.5 | 14.3 | 36.8 | 33.5 | 28.4 | 12.8 | 24.9 |
| 2018 | 1.1 | 34.5 | 53.4 | 29.7 | 0.6 | 25.4 | 47.5 | 24.5 |
| 2019 | -6.6 | 19.5 | 33.7 | 19.9 | -3.8 | 14.4 | 29.9 | 16.0 |
| 2020 | 2.1 | 30.8 | 28.1 | 20.3 | 1.2 | 22.7 | 25.0 | 16.3 |
| 2021 | -14.6 | 17.1 | 5.6 | 12.5 | -8.5 | 12.6 | 5.0 | 8.7 |
| 2022 | 50.0 | 86.0 | 4.8 | 46.9 | 29.1 | 63.4 | 4.3 | 32.3 |
| 2023 | 61.4 | 97.4 | 120.6 | 93.1 | 35.7 | 71.8 | 107.3 | 71.6 |
| 2024 | 66.0 | 102.0 | -12.5 | 60.2 | 38.5 | 75.2 | -11.1 | 41.6 |
| 2025 | -18.5 | 9.6 | 25.4 | 17.8 | -10.8 | 7.1 | 22.6 | 13.5 |

Historical - Current

(Historical - Current) / Current